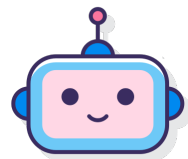


## Stage 1



SLM  
response



Reward  
Model

low  
reward



Failure

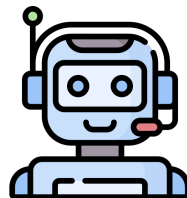
high  
reward



Success

## Stage 2

*"Which skills did the  
model fail to leverage  
in its solution?"*



*"The missing skills are:  
(1) factorization  
(2) prime number theory"*

LLM

AdaptMI+

Difficult  
question

AdaptMI

Easy  
question



Skill Bank

Skill 1

Skill 2

Skill 3

## Adaptive Math Instructions

Difficult questions  
+  
Skill-based few-shot

+

Easy questions  
+  
Fixed few-shot