

Hey AI, can you please answer my question?

HOW DOES A LLM WORK?

EXPLAINED THROUGH ILLUSTRATIONS

1. Slicing



When you ask a question to a LLM, it starts by slicing.

2. Translating



Each piece is then transformed into numbers before LLM can work on it.

3. Focusing



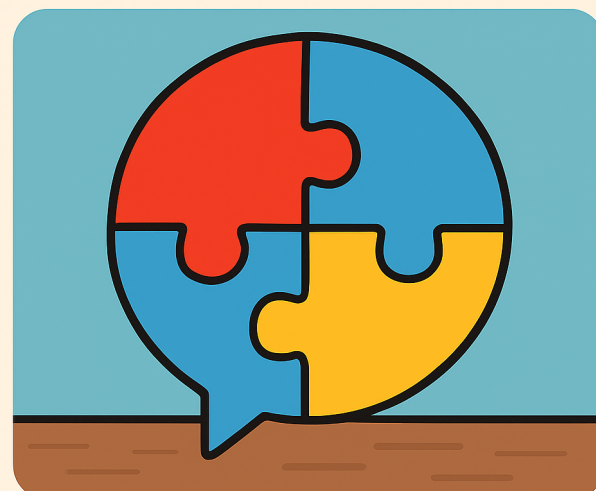
Then the LLM focuses on the most important bits and relates them to patterns in its vast data.

4. Choosing



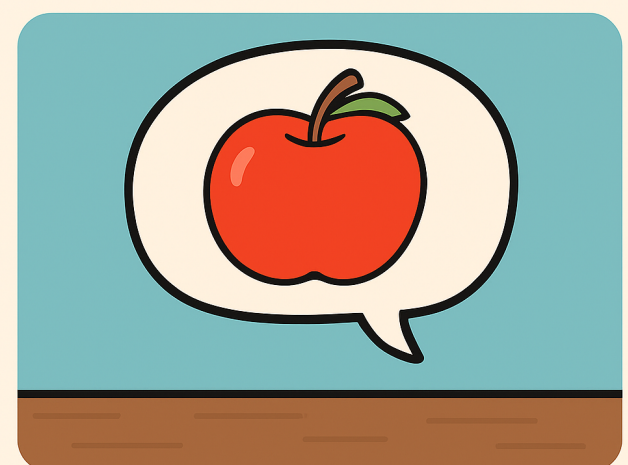
The LLM chooses the most probable words to build its answer.

5. Organizing



It enriches, organizes and recombines the pieces to understand the big picture.

6. Answering



In summary: the LLM slices words, quantifies them, identifies patterns, predicts answer, at lightening speed.