

Supplementary Materials of Efficient Perceiving Local Details via Adaptive Spatial-Frequency Information Integration for Multi-focus Image Fusion

Anonymous Authors

We further selected the different regions from the same samples in our main paper for visual comparison, as shown in Figure 1 and Figure 2.

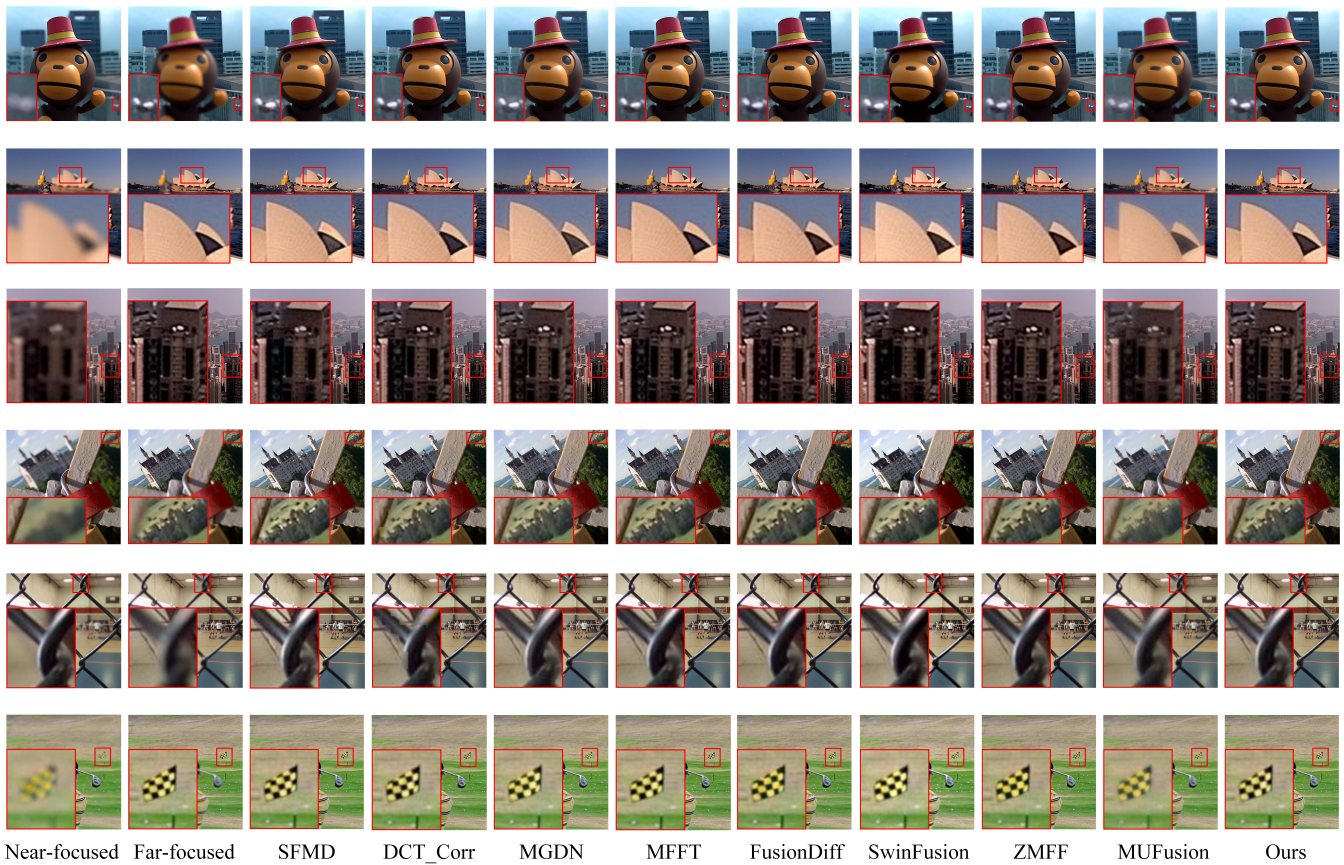


Figure 1: The visual comparisons between other MFIF methods and our method on the Lytro dataset.

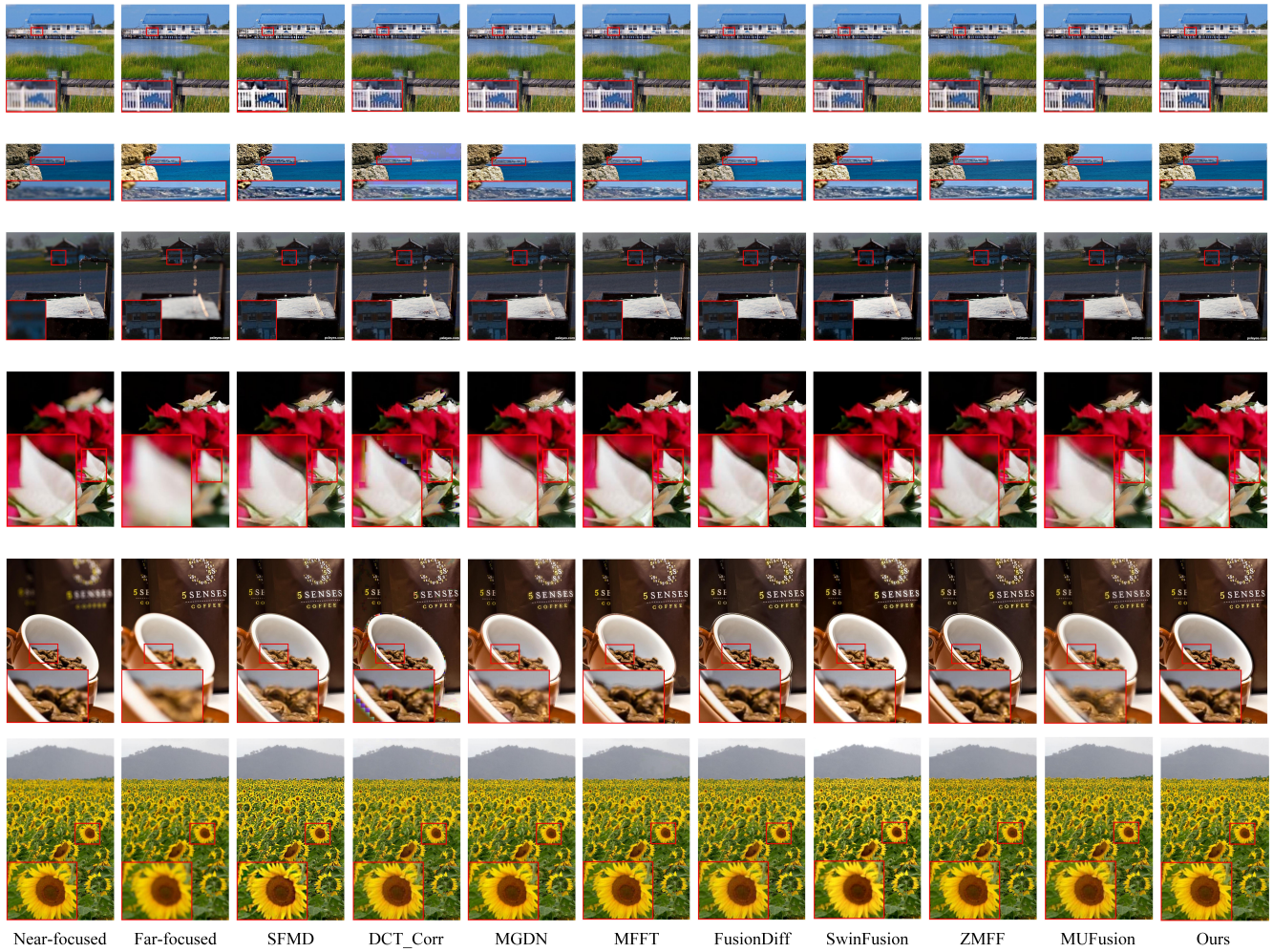


Figure 2: The visual comparisons between other MFIF methods and our method on the MFFW dataset.