



Nils Gessert¹, Marcel Bengs¹, Julia Krüger², Roland Opfer²,
Ann-Christin Ostwaldt², Praveena Manogaran³,
Sven Schippling³, Alexander Schlaefer¹



Institute of Medical Technology and Intelligent Systems Medical Technology | Intelligent Systems

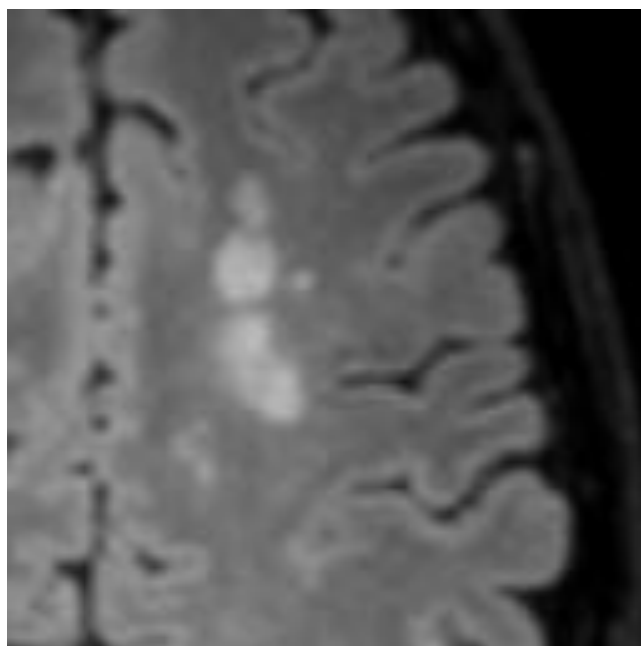
4D Deep Learning for Multiple Sclerosis Lesion Activity Segmentation

¹Institute of Medical Technology and Intelligent Systems, Hamburg University of Technology

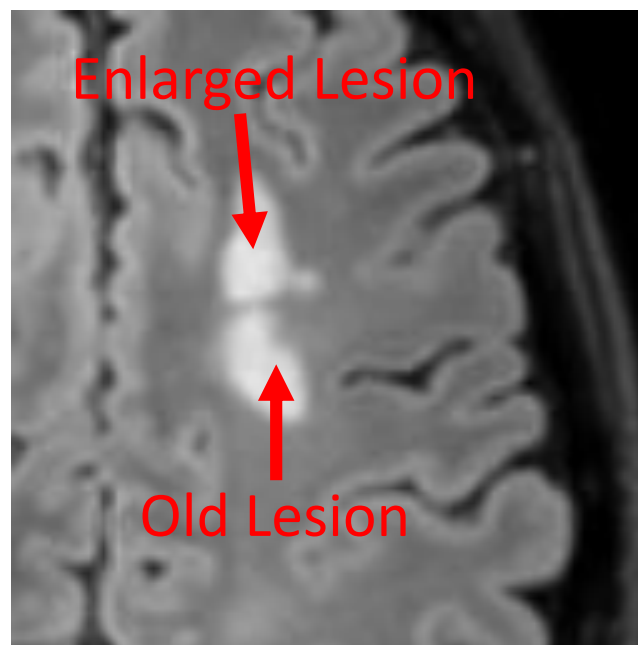
²jung diagnostics GmbH

³Department of Neurology, University Hospital Zurich and University of Zurich

Lesion Activity Segmentation



Baseline MRI Scan

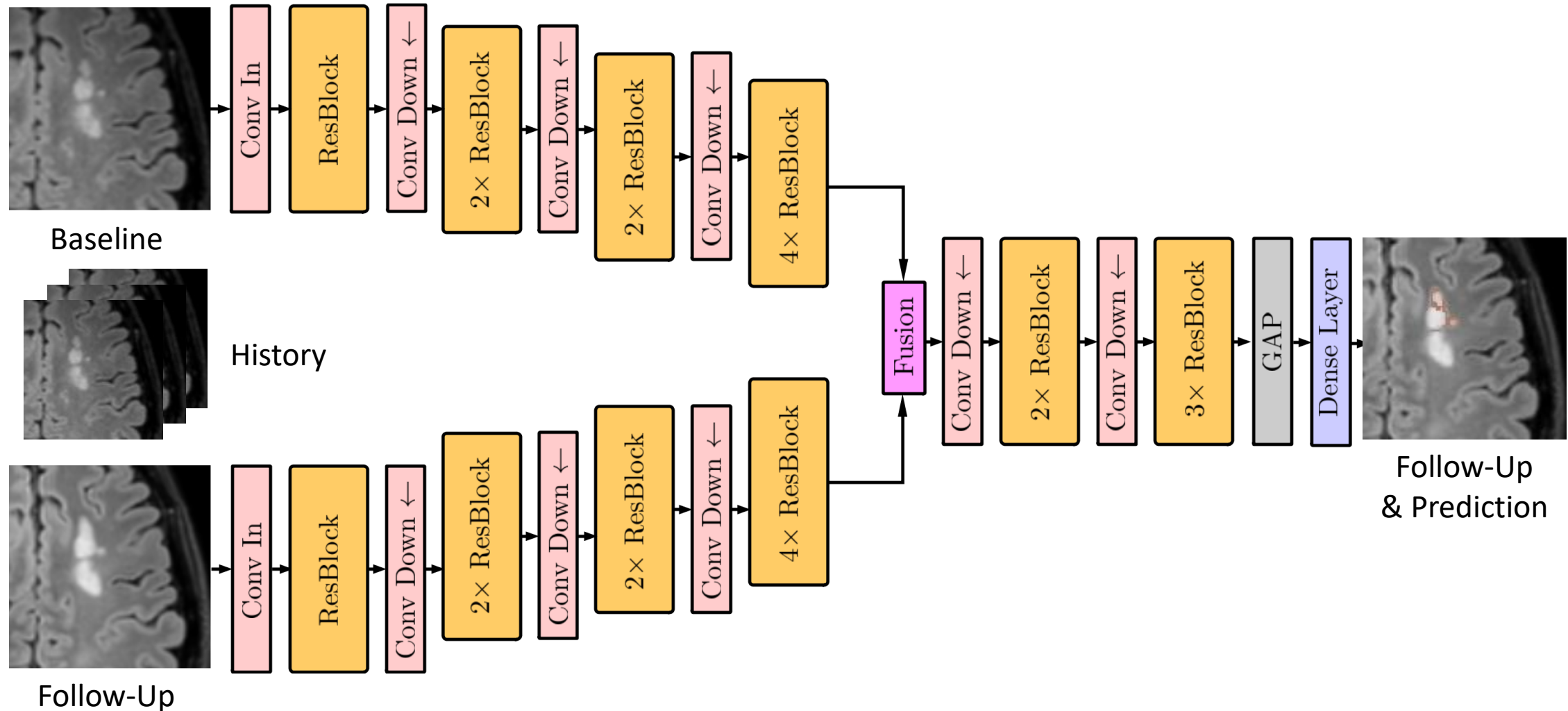


Follow-up MRI Scan

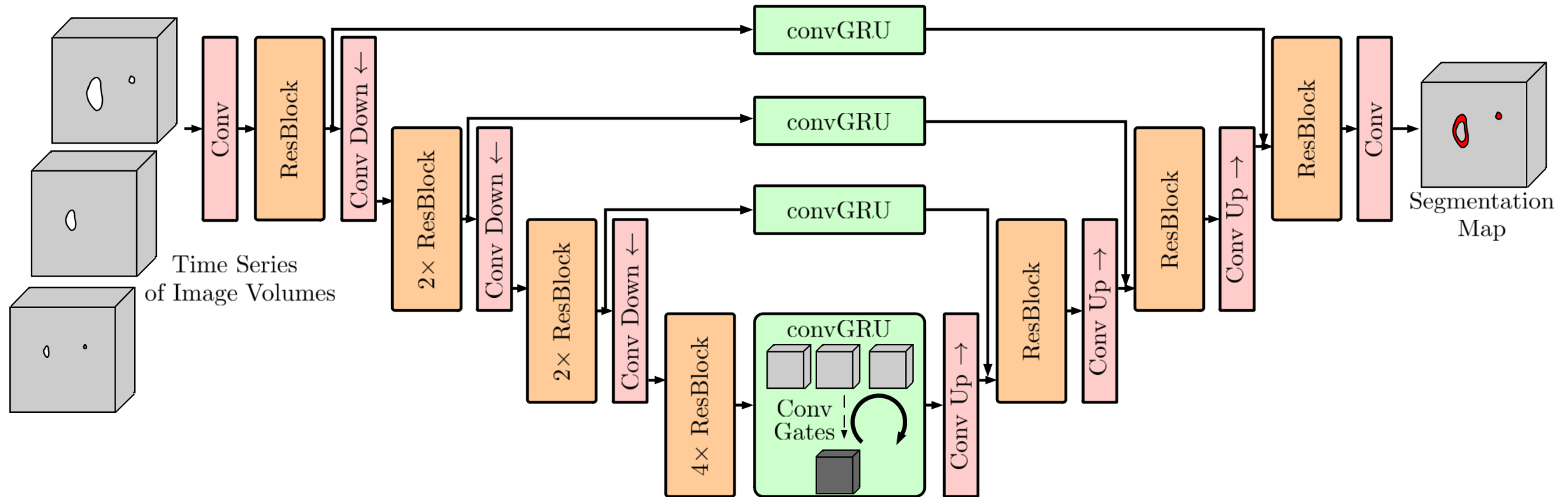


Lesion Activity

Two-Path 3D Encoder-Decoder



Encoder-convGRU-Decoder



Dataset:

- 44 MS cases, three time points each
- FLAIR image volumes, varying size

Results and Discussion

