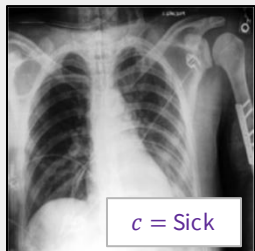
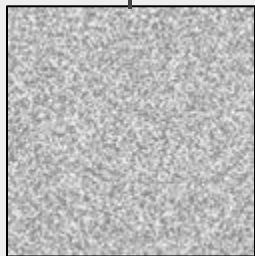


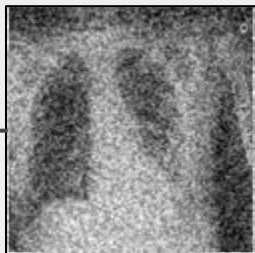
Sample data, x



$\lambda \sim p(\lambda)$



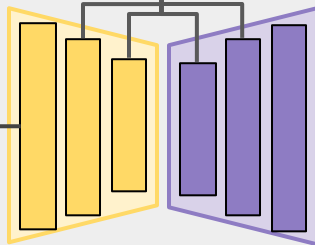
$\epsilon \sim N(0, I)$



$$z_\lambda = \alpha_\lambda x + \sigma_\lambda \epsilon$$

Class Condition, c

Sick | Healthy

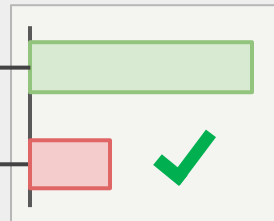


Conditional Diffusion
Model, $\hat{x}_\theta(z_\lambda, c_j)$

Healthy, $c_j = 0$



Reconstruction Error



$$\arg \min_j \|x - \hat{x}_\theta(z_\lambda, c_j)\|_2^2$$

Sick, $c_j = 1$



Repeat N times