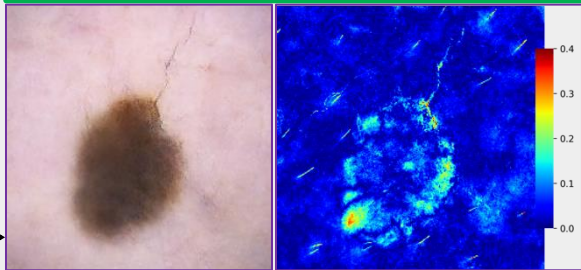
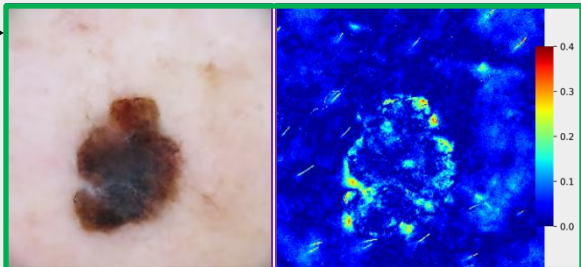


$$\hat{x}_\theta(z_\lambda, c = \text{Sick})$$

$c = \text{Sick}$

$$\hat{x}_\theta(z_\lambda, c = \text{Healthy})$$



$$\hat{x}_\theta(z_\lambda, c = \text{Sick})$$

$c = \text{Sick}$

$$\hat{x}_\theta(z_\lambda, c = \text{Healthy})$$

