

Figure 1. Top: Images generated by Guided Diffusion trained on ImageNet 256x256. Bottom: Refined images by applying our algorithm.



Figure 2. Top: Images generated by Guided Diffusion trained on ImageNet 128x128. Bottom: Refined images by applying our algorithm.

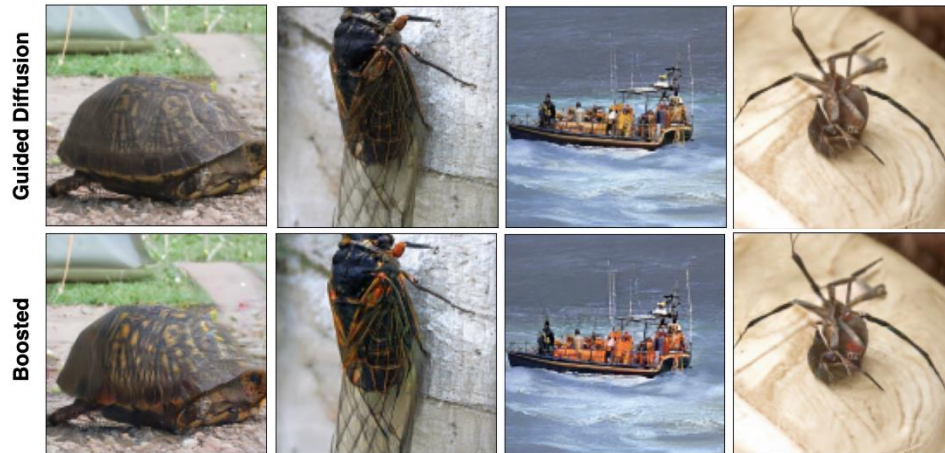


Table 1. FID and IS results of Consistency models and the results after boosting via our joint model using RN50 architecture, and Wide-RN 50-2 architecture.

Boosting Method	Inference Steps	FID (\downarrow)	IS (\uparrow)
Consistency Training	1	13.00	28.83
RN50 Joint Model		9.69	50.80
Wide-RN Joint Model		8.83	55.67
Consistency Training	2	11.12	27.28
RN50 Joint Model		8.51	39.40
Wide-RN Joint Model		7.98	46.33
Consistency Distillation	1	6.20	39.87
RN50 Joint Model		4.95	51.98
Wide-RN Joint Model		4.84	58.73
Consistency Distillation	2	4.69	42.28
RN50 Joint Model		3.84	51.12
Wide-RN Joint Model		3.78	55.13

Table 2. FID and IS results of Consistency models and the results after boosting via our joint model using PGD, and SGLD.

Boosting Method	Inference Steps	FID (\downarrow)	IS (\uparrow)
Consistency Training	1	13.00	28.83
Wide-RN+PGD		8.83	55.67
Wide-RN+SGLD		8.71	59.76
Consistency Training	2	11.12	27.28
Wide-RN+PGD		7.98	46.33
Wide-RN+SGLD		7.64	46.83
Consistency Distillation	1	6.20	39.87
Wide-RN+PGD		4.84	58.73
Wide-RN+SGLD		4.65	59.00
Consistency Distillation	2	4.69	42.28
Wide-RN+PGD		3.78	55.13
Wide-RN+SGLD		3.58	56.46

Table 3. Preliminary FID and IS results of different generative models at different resolutions and the results after boosting via our joint model.

Boosting Method	FID (\downarrow)	IS (\uparrow)	Precision (\uparrow)	Recall (\uparrow)
Adm 64x64	2.61	46.78	0.73	0.63
Wide-RN+SGLD	2.08	58.41	0.75	0.60
BigGAN 64x64	4.06	44.94	0.79	0.48
Wide-RN+SGLD	3.67	62.79	0.81	0.45
Iddpm 64x64	2.92	45.62	0.73	0.62
Wide-RN+SGLD	2.25	62.26	0.76	0.59
Adm-G 128x128	2.97	141.47	0.78	0.59
Wide-RN+SGLD	2.34	271.95	0.80	0.58
BigGAN 128x128	6.02	145.83	0.86	0.34
Wide-RN+SGLD	5.68	236.88	0.86	0.34
Adm-G 256x256	4.58	186.83	0.81	0.52
Wide-RN+SGLD	3.17	301.06	0.83	0.53
BigGAN 256x256	7.03	202.64	0.87	0.27
Wide-RN+SGLD	6.16	275.25	0.88	0.28