

Figure 7: PCA over randomly sampled $x \in [0, 10k]$, $|X| = 1000$ (left) and $x \in [-10k, 10k]$, $|X| = 2000$ (right) for the main OpenAI, Voyage and Gemini models.

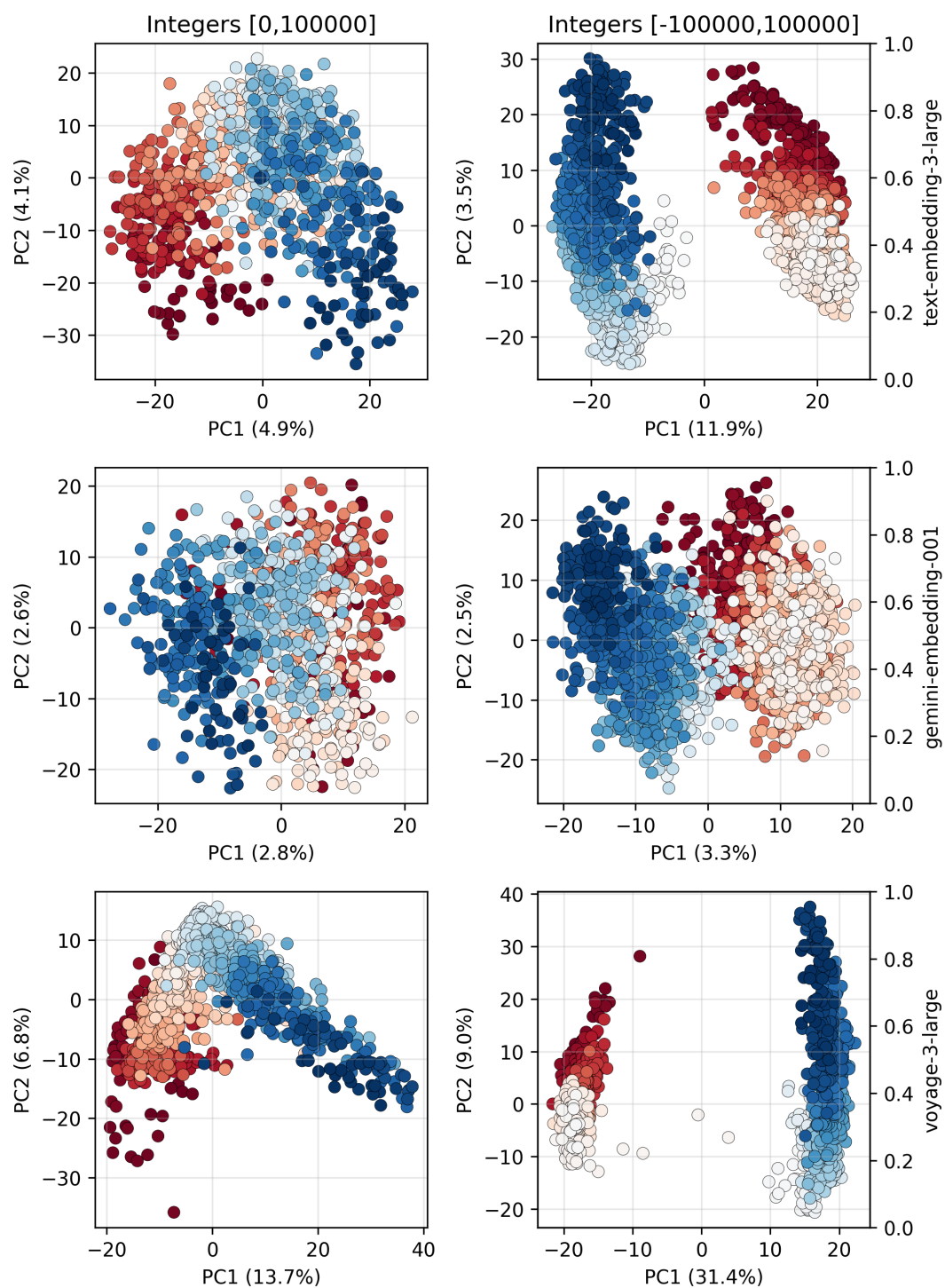


Figure 8: PCA over randomly sampled $x \in [0, 100k]$, $|X| = 1000$ (left) and $x \in [-100k, 100k]$, $|X| = 2000$ (right) for the main OpenAI, Voyage and Gemini models.

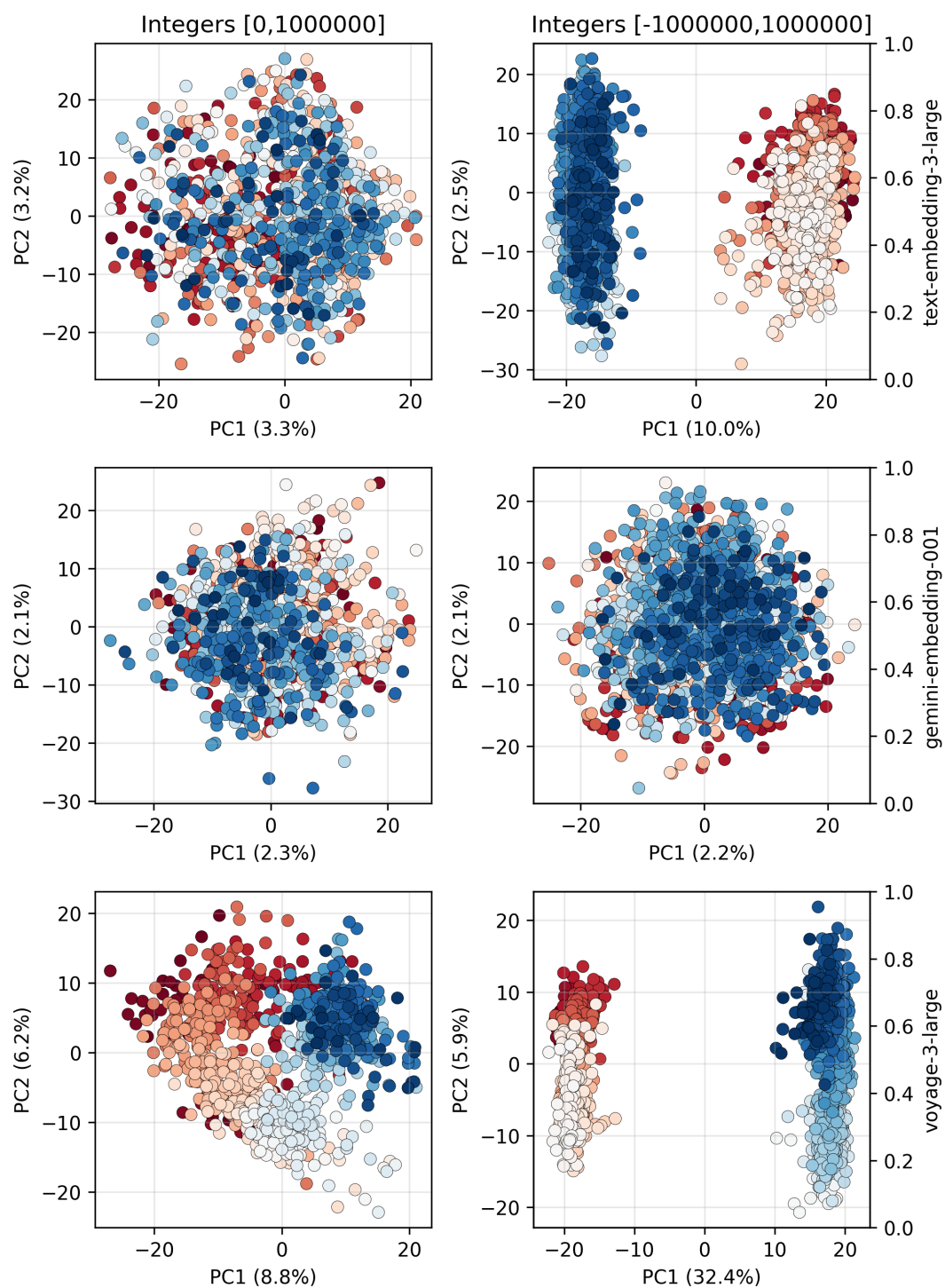


Figure 9: PCA over randomly sampled $x \in [0, 1M]$, $|X| = 1000$ (left) and $x \in [-1M, 1M]$, $|X| = 2000$ (right) for the main OpenAI, Voyage and Gemini models.

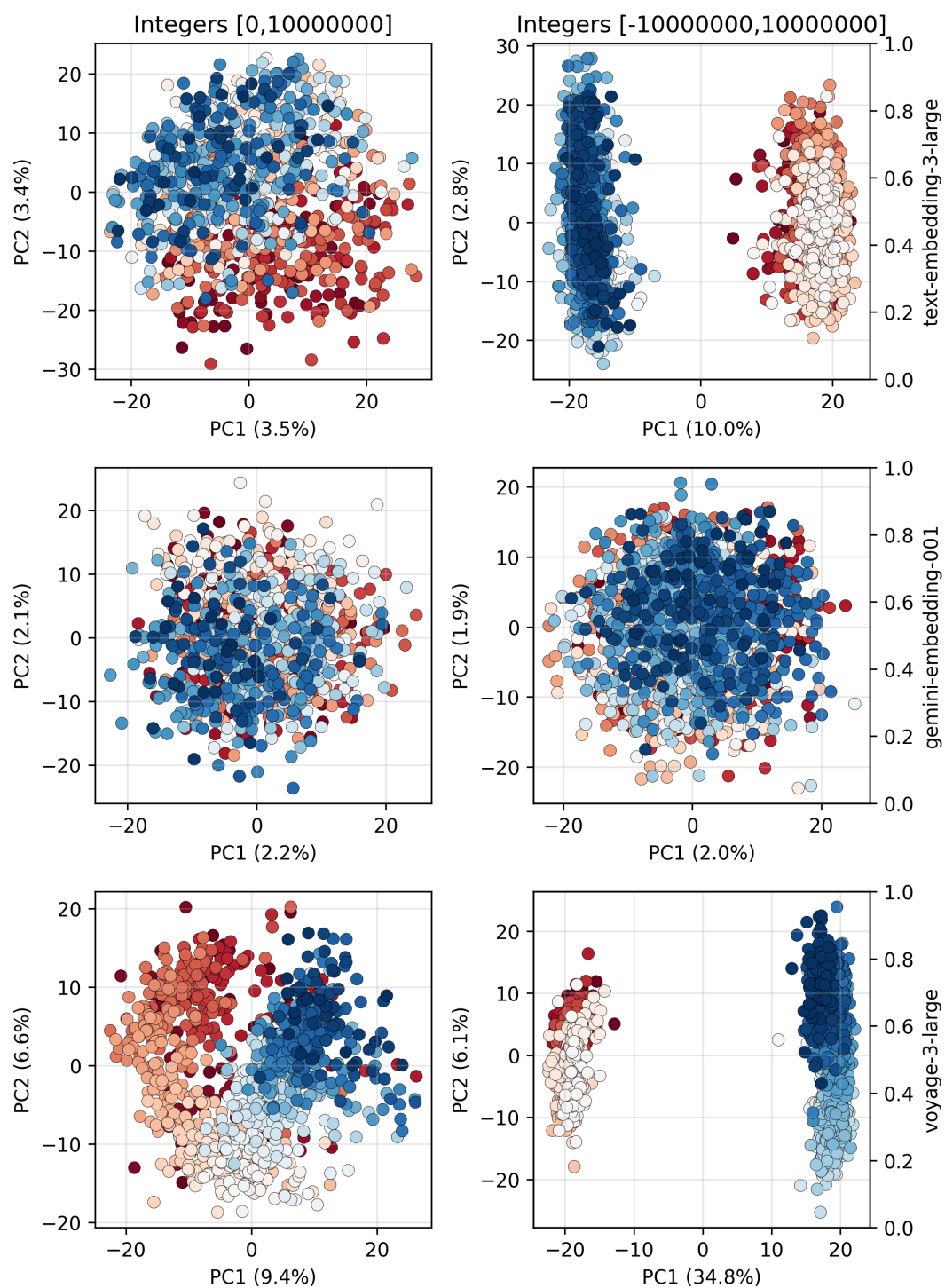


Figure 10: PCA over randomly sampled $x \in [0, 10M]$, $|X| = 1000$ (left) and $x \in [-10M, 10M]$, $|X| = 2000$ (right) for the main OpenAI, Voyage and Gemini models.