

---

## 1 MORE RESULTS



*Scenes*

*Ours (Sample 1)*

*Ours (Sample 2)*

*Ours (Sample 3)*

**Figure R1: More Results for Transition Samples.** In each case, transitions are generated by the same prompt with different random seeds. *Best view with Acrobat Reader. Click the images to play videos.*



*Scenes*

*VQGAN-based*

*Morphing*

*SD-based*

**Figure R2: More Results for Compared Transition Methods.** *Best view with Acrobat Reader. Click the images to play videos.*

VQGAN-based

Morphing

SD-based

Ours (sample 1)

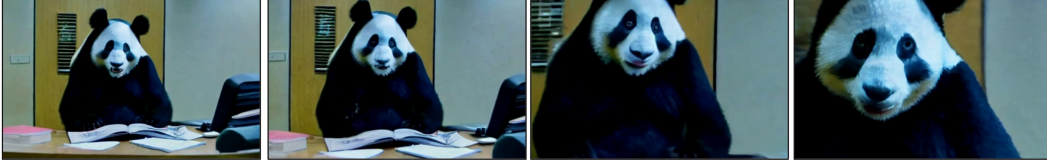
Ours (sample 2)

Ours (sample 3)

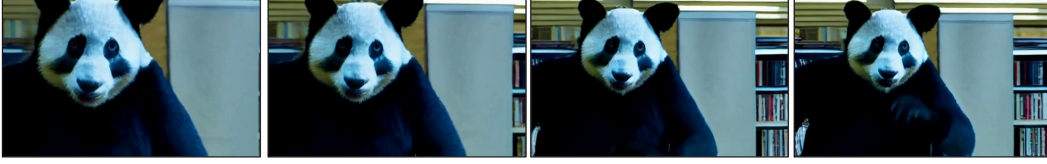
**Figure R3: Comparison of our model with baseline methods.** *Best view with Acrobat Reader. Click the images to play the videos.*



*1<sup>st</sup> prompt: A panda working in the office, camera zoom-in.*



*2<sup>st</sup> prompt: A panda working in the library, camera zoom-out.*



*Prompt: A panda working in the office and in the library.*

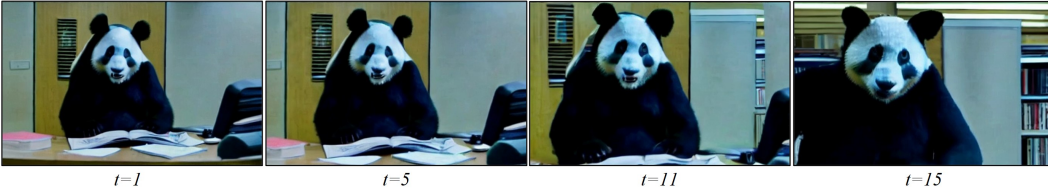


Figure R4: **Ablation study for text-control transition.** The first two rows are results with the prompt of “camera zoom-in” and “camera zoom-out”, and the last rows are results without “camera zoom-in / zoom-out”.

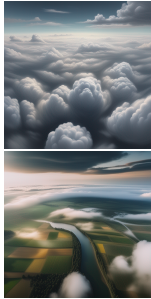


*Scenes*

*Scene transfer from flower to cherry tree, camera zoom-out*

*Scene transfer from flower to cherry tree, camera pans.*

*Interpolation Results  
(VQGAN-based)*



*Scenes*

*Flying through fantasy land- Cloud disappear and a village*

*scapes in the cloud. appear.*

*Interpolation Results  
(VQGAN-based)*

Figure R5: **More Results and comparison for text-control transition.** In each row, our results are shown in the first two columns with different prompts, and the last column shows a baseline result of simple interpolation by VQGAN-based model. *Best view with Acrobat Reader. Click the images to play videos.*