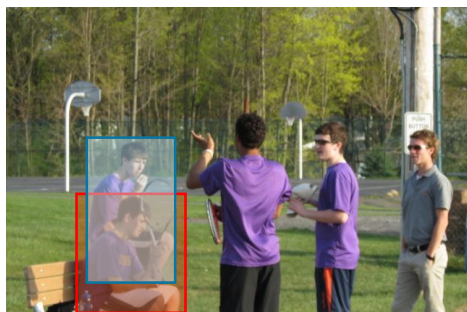
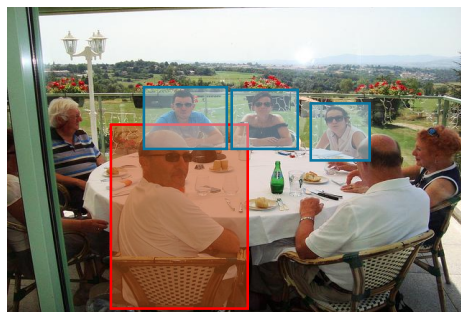


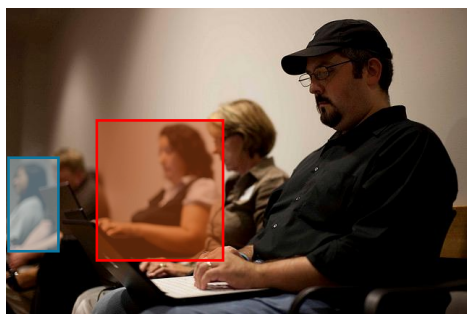
Orange: Referring Expressions : Ground-Truth : Ambiguities



guy sitting



looking this way



woman with black hair



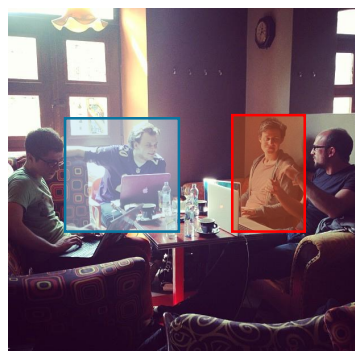
black shirt



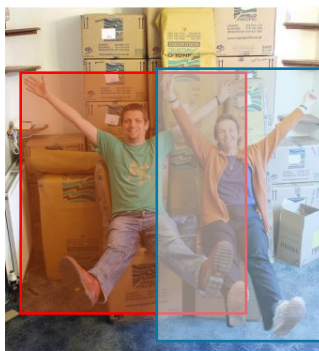
blue tie, not groom



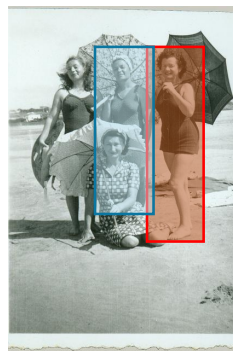
woman



peron next to man innlasses



man



a lady with a black swim
suit holding a umbrella

Figure 1: We present nine examples from the RefCOCO, RefCOCO+ and RefCOCOg benchmarks where the short referring expressions (highlighted in orange within each caption) are ambiguous, leading to references to multiple instances (indicated by blue boxes) beyond the ground truth (indicated by the orange box), resulting in unreliable evaluations.