

462 In appendix, we present details on additional real world evaluation experiments.

463 **Additional Real World Evaluation Results on Challenging Obstacles.** To further examine the ca-  
 464 pability of our policies enabling obstacle avoidance enhancement, we additionally evaluated policy  
 465 performance for the cup serving task on a set of more challenging scenarios with more challenging  
 466 obstacle placement, and obstacles of larger size and more diverse geometric shape; we term this set  
 467 of experiments *Challenging Obstacles*. As shown in Tab A1, we conducted 10 trials on 10 different  
 468 obstacle sets (shown in Fig. A1, on the same three policies No Aug, FreeSpace Aug, Obstacle  
 469 Aug, as tested in real world experiments for *Free Space* and *Obstacle* as reported in manuscript, and  
 470 found that ours Obstacle Aug was able to complete 10/10 trials, while No Aug and FreeSpace  
 471 Aug both fail complete any trials.

Method	Task Success Rate
No Aug	0%
FreeSpace Aug (Ours)	0%
Obstacle Aug (Ours)	100%

Table A1: **Real World Evaluation Results for *Challenging Obstacles*.** Task success rate reported over 10 trials.

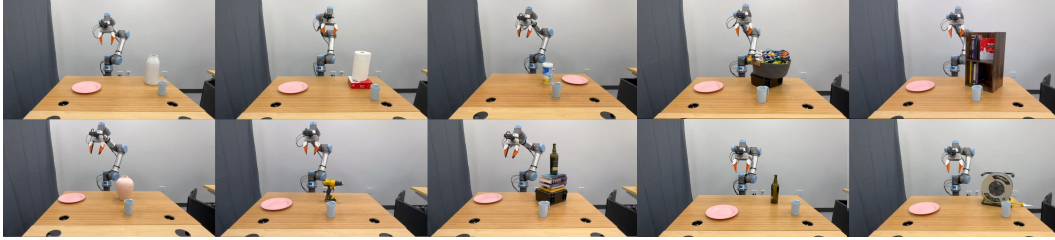


Fig. A1: **Challenging Obstacle Evaluation.** Initial states for all 10 evaluation episodes for *Challenging Obstacle* experiment. Please see the accompanying video for more comparisons.