

Supplementary Materials: Using Expert Gaze for Self-Supervised and Supervised Contrastive Learning of Glaucoma from OCT Data

Anonymous

ABC@XYZ.COM



Figure 1: Comparison of best (over three seeds) results of models trained using varying amounts of data for SSL pretraining.

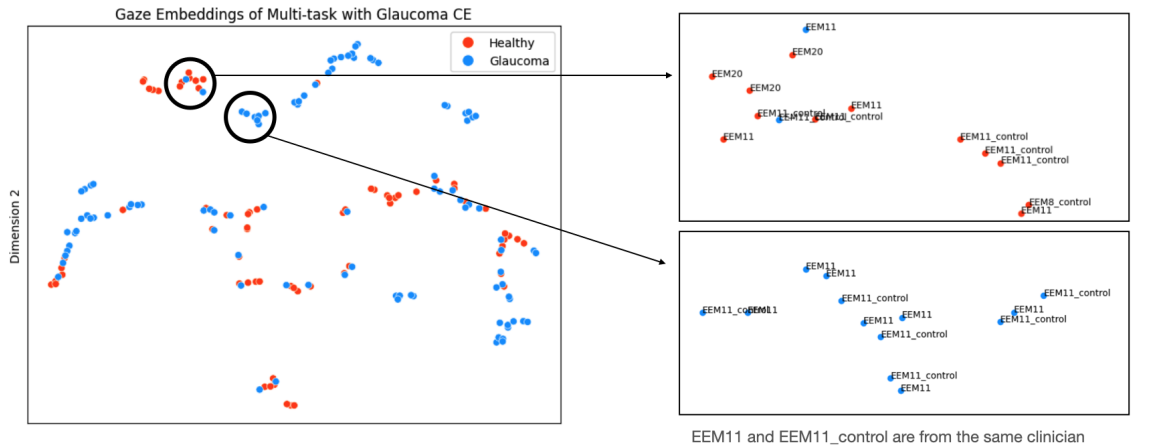


Figure 2: t-SNE plot of Gaze embeddings. The small clusters are grouped by glaucoma vs healthy and which clinician the gaze data came from, which was the criteria for positive pairs in triplet loss.

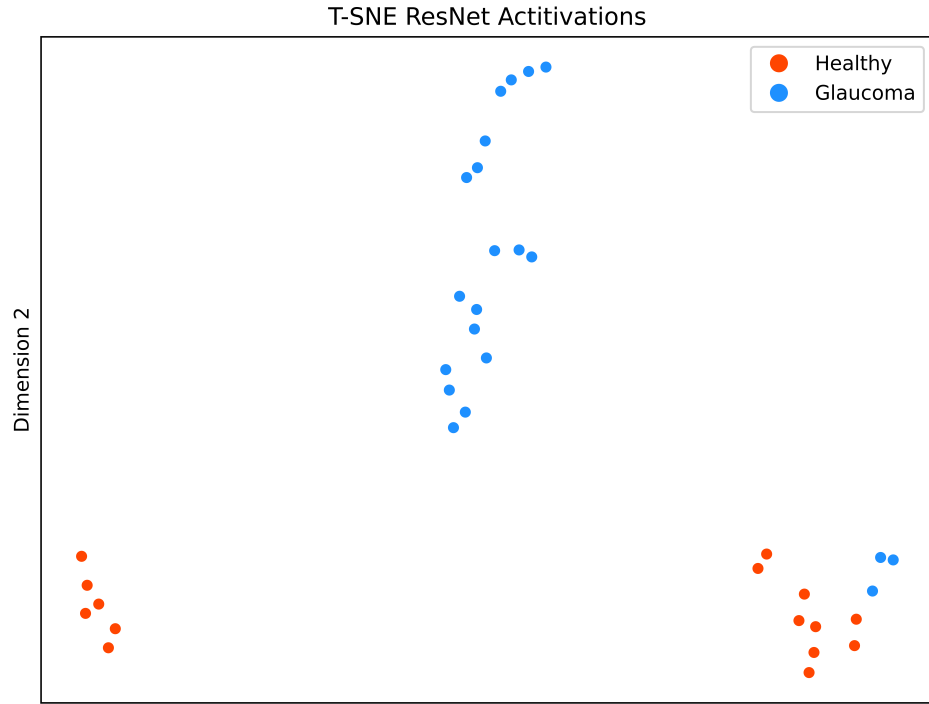


Figure 3: t-SNE plot of ResNet’s activation after training with WSupCon on Testset.

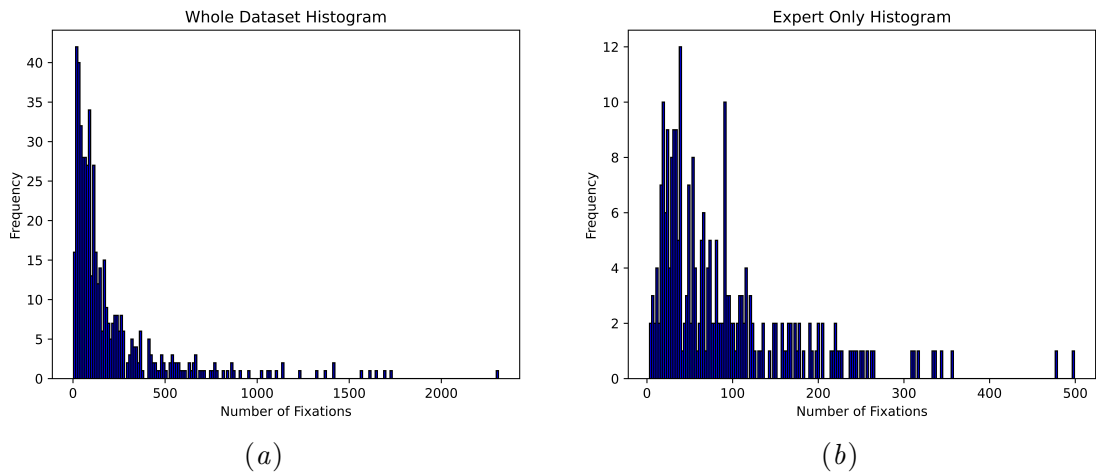


Figure 4: Histogram of fixation counts on OCT reports for all clinicians (left) and for experts only (right). Expert gaze data have fewer outliers with a high number of fixations.

