

## A APPENDIX

We provide additional uncurated samples of our models for three datasets: CelebA-HQ (6, 7), LSUN Church (8, 9), and FFHQ (10, 11). We also provide additional uncurated samples of our models on CelebA-HQ trained with L2 loss (12) and E-LatentLPIPS loss (13).



Figure 6: One-step samples on CelebA-HQ  $256 \times 256$



Figure 7: Two-step samples on CelebA-HQ  $256 \times 256$



Figure 8: One-step samples on LSUN Church  $256 \times 256$

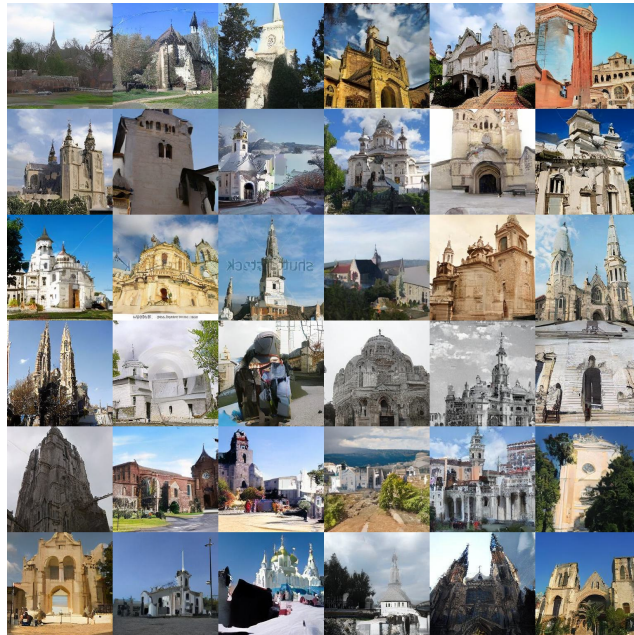


Figure 9: Two-step samples on LSUN Church  $256 \times 256$





Figure 10: One-step samples on FFHQ  $256 \times 256$

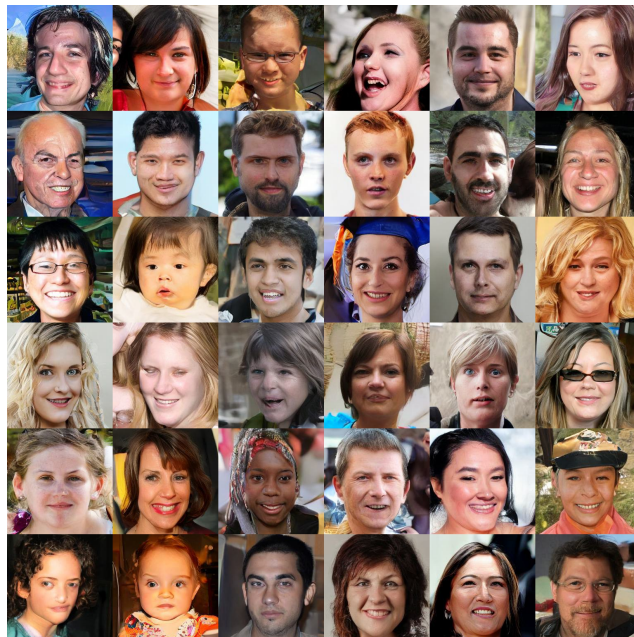


Figure 11: Two-step samples on FFHQ  $256 \times 256$



Figure 12: One-step samples on CelebA-HQ  $256 \times 256$  (L2 loss)



Figure 13: One-step samples on CelebA-HQ  $256 \times 256$  (E-LatentLPIPS loss)