

---

# nvBench 2.0: Resolving Ambiguity in Text-to-Visualization through Stepwise Reasoning

---

Tianqi Luo<sup>1</sup> Chuhan Huang<sup>1</sup> Leixian Shen<sup>2</sup> Boyan Li<sup>1</sup> Shuyu Shen<sup>1</sup>  
Wei Zeng<sup>1,2</sup> Nan Tang<sup>1,2</sup> Yuyu Luo<sup>1,2</sup>

<sup>1</sup> HKUST(GZ), Chuangzhou, China; <sup>2</sup> HKUST, Hong Kong SAR, China

## Abstract

1 Text-to-Visualization (*Text2VIS*) enables users to create visualizations from natural  
2 language queries, making data insights more accessible. However, *Text2VIS*  
3 faces challenges in interpreting ambiguous queries, as users often express their  
4 visualization needs in imprecise language. To address this challenge, we introduce  
5 nvBench 2.0, a new benchmark designed to evaluate *Text2VIS* systems in scenarios  
6 involving ambiguous queries. nvBench 2.0 includes 7,878 natural language queries  
7 and 24,076 corresponding visualizations, derived from 780 tables across 153  
8 domains. It is built using a controlled ambiguity-injection pipeline that generates  
9 ambiguous queries through a reverse-generation workflow. By starting with  
10 unambiguous seed visualizations and selectively injecting ambiguities, the pipeline  
11 yields multiple valid interpretations for each query, with each ambiguous query  
12 traceable to its corresponding visualization through step-wise reasoning paths.  
13 We evaluate various Large Language Models (LLMs) on their ability to perform  
14 ambiguous *Text2VIS* tasks using nvBench 2.0. We also propose Step-Text2Vis,  
15 an LLM-based model trained on nvBench 2.0, which enhances performance in  
16 ambiguous scenarios through step-wise preference optimization. Our results  
17 show that Step-Text2Vis outperforms all baselines, setting a new state-of-the-  
18 art for ambiguous *Text2VIS* tasks. Our source code and data are available at  
19 <https://nvbench2.github.io/>.

## 20 1 Introduction

21 Text-to-Visualization (*Text2VIS*) democratizes data exploration and analysis by enabling users to  
22 generate Visualizations (vis) from text queries [1–4]. While recent advances in Large Language Models  
23 (LLMs) [5–9] have significantly enhanced translation accuracy, they struggle with a fundamental  
24 challenge: *text query ambiguity*—a single query often maps to multiple valid visualizations, each  
25 representing a different interpretation of the user’s intent [10–14].

26 In *Text2VIS*, there are two layers of ambiguity: the **data layer**, which governs how a query selects,  
27 filters, transforms data, and the **visualization layer**, which determines how the data is visually  
28 represented. For example, in Figure 1, the text query “Show the **gross trend** of comedy and  
29 action movies **by year**” appears straightforward but contains multiple ambiguities. At the data  
30 layer, “**gross**” could mean either `World_Gross` or `Local_Gross` column, while “comedy and  
31 action” implicitly requires filtering the column `Genre`. Moreover, “**by year**” implies temporal  
32 binning on `Date` with aggregation on “**gross**”, neither of which is explicitly specified. At the  
33 visualization layer, “**trend**” might suggest a bar or line chart, with the **x-channel** representing  
34 the binned temporal data, the **y-channel** showing the aggregated “**gross**” values, and the implicit  
35 column `Genre` mapped to the **color-channel**, where comedy and action are represented by distinct  
36 colors in the visualization. This example highlights how ambiguities at both the data and visualization  
37 layers interact, complicating the mapping from text queries to visualizations.

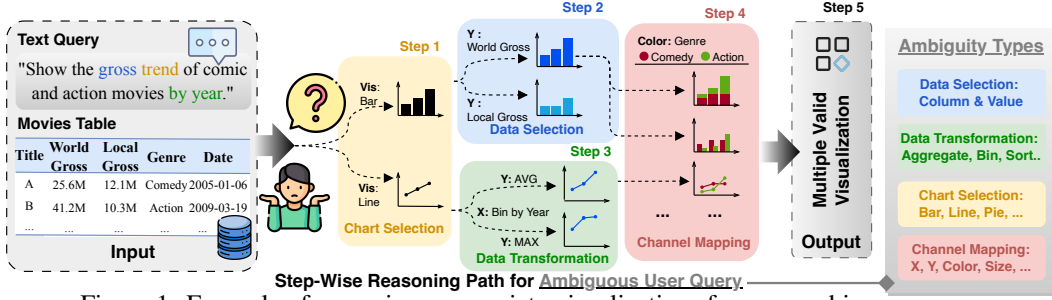


Figure 1: Example of reasoning appropriate visualizations from an ambiguous query.

**Existing Benchmarks and Their Limitations.** Although several benchmarks for the *Text2VIS* task exist [15, 16, 5, 17–20], as shown in Table 1, none explicitly evaluates how the *Text2VIS* systems handle ambiguity. In fact, existing efforts [16, 19, 5] often overlook this issue by adhering to the *single-correct-answer* paradigm, where each text query maps to exactly one valid visualization. For example, nvBench [16] maps a text query to a unique visualization, ignoring more than 60% of real-world ambiguous cases [17]. Similarly, Dial-NVBench [19] supports multi-turn clarification but assumes that the final query is well-specified, which sidesteps the inherent ambiguities in user intents.

This narrow focus leaves a critical gap in the push to advance *Text2VIS* systems. *How can we evaluate and improve their ability to generate valid visualizations from ambiguous text queries?*

**Design Considerations.** To address this challenge, a benchmark is needed that tests *Text2VIS* solutions on handling ambiguous text queries, recognizing multiple valid interpretations, and providing an appropriate set of answers. This benchmark should include diverse ambiguous queries, multiple valid outputs, reasoning paths explaining the ambiguity, and broad domain coverage.

**Our Proposal.** To fill this gap, we propose nvBench 2.0, the first benchmark for generating visualizations from ambiguous text queries (*i.e.*, the ambiguous *Text2VIS* task). This dataset provides a robust foundation for evaluating *Text2VIS* solutions in scenarios where text query ambiguity is a key challenge. nvBench 2.0 includes 7,878 text queries and 24,076 corresponding visualizations, derived from 780 tables across 153 domains. It meets the design considerations through a controllable ambiguity-injected *Text2VIS* data synthesis pipeline. This pipeline uses a reverse-generation workflow, starting with a seed visualization and injecting ambiguity to create multiple valid interpretations. We then generate an ambiguous text query for each set of modified visualizations, incorporating injected ambiguity. The pipeline’s transparency allows tracking of how interpretations lead to distinct visualizations, supported by reasoning paths detailing the ambiguity resolution process. This traceability enables researchers to assess the effectiveness and interpretability of ambiguity resolution, ensuring an accurate and explainable process.

**Contributions.** Our main contributions are summarized as follows:

- **Ambiguity-Injected Data Synthesizer.** We develop a *Text2VIS* data synthesizer that generates ambiguous data by selectively injecting ambiguities into seed visualizations, yielding multiple valid answers for each text query while providing step-wise disambiguation reasoning paths. (Section 2.1)
- **nvBench 2.0 Benchmark.** We present nvBench 2.0, the first benchmark designed for the ambiguous *Text2VIS* task. It contains 7,878 text queries and 24,076 corresponding visualizations, derived from 780 tables across 153 domains. Each *Text2VIS* sample is paired with a disambiguation reasoning path, providing clear explanations of how the ambiguity is resolved and ensuring the interpretability of the ambiguity resolution process. (Section 2.2)
- **Step-Text2Vis for Ambiguous *Text2VIS* Tasks.** We propose Step-Text2Vis, an LLM-based model trained on nvBench 2.0. By leveraging step-wise preference optimization and the provided reasoning paths, Step-Text2Vis model achieves the highest F1@3 (81.50%) and F1@5 (80.88%), outperforming prompting GPT-4o by 22.54% and 21.85%, respectively. (Section 3)
- **Extensive Evaluation.** We conduct comprehensive experiments to validate the effectiveness of nvBench 2.0 for training and evaluating *Text2VIS* systems under ambiguity. Our findings reveal the limitations of existing models when faced with ambiguous queries while demonstrating that the Step-Text2Vis model outperforms baseline approaches and achieves state-of-the-art performance in ambiguous *Text2VIS* tasks. (Section 4)

Table 1: Comparison of *Text2VIS* benchmarks.

Datasets	#-Tables	#-Samples		TEXT $\rightarrow$ VIS Mapping	TEXT Ambiguity	Reasoning Paths	TEXT Generation
		#-VIS	#-TEXT				
Quda [18]	36	-	14035	-	✗	✗	Human-based
NLV [17]	3	30	814	$n \rightarrow 1$	✗	✗	Human-based
Dial-nvBench [19]	780	7247	124449	$n \rightarrow 1$	✗	✗	Rule-based
VL2NL [15]	1981	1981	3962	$1 \rightarrow 1$	✗	✗	LLM-based
VisEval [5]	748	2524	1150	$1 \rightarrow 1$	✗	✗	LLM-based
nvBench [16]	780	7247	25750	$1 \rightarrow 1$	✗	✗	Rule-based
<b>nvBench 2.0</b>	780	24076	7878	$1 \rightarrow n$	✓	✓	LLM-based

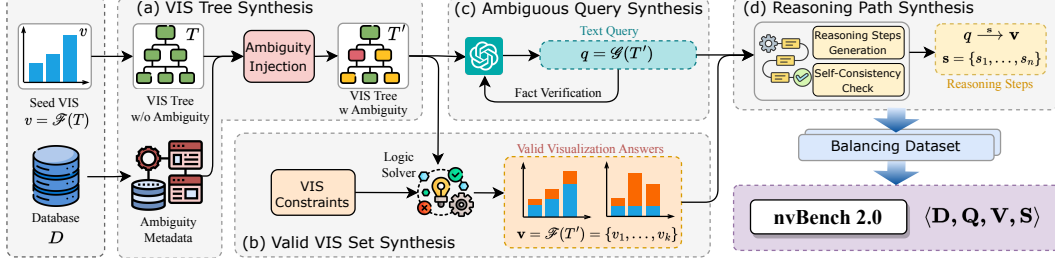


Figure 2: The Pipeline for Synthesizing nvBench 2.0.

## 81 2 nvBench 2.0

82 In this section, we will first elaborate on how to develop nvBench 2.0 with an Ambiguity-Injected  
83 Data Synthesizer (Section 2.1), and then describe the characteristics of nvBench 2.0 (Section 2.2).

### 84 2.1 Ambiguity-Injected *Text2VIS* Data Synthesizer

85 Figure 2 provides a high-level overview of our *Ambiguity-Injected Text2VIS Data Synthesizer*. The  
86 pipeline begins with a data table  $D$  and an unambiguous seed vis  $v$ , from which a vis tree  $T$  (without  
87 ambiguity) is derived. Through a systematic ambiguity injection process, this tree is transformed into  
88  $T'$  (with ambiguity), serving as intermediate products in the workflow. Subsequently, the pipeline  
89 generates an ambiguous text query  $q$  alongside a corresponding set of valid vis  $\mathbf{v} = \{v_1, \dots, v_k\}$ ,  
90 while also producing step-wise reasoning paths  $\mathbf{s} = \{s_1, \dots, s_n\}$  for each valid vis. The final output  
91 of the pipeline is nvBench 2.0, structured in the form  $\langle D, Q, V, S \rangle$ . Next, we will go through our  
92 pipeline step by step.

93 **Data Preparation.** To construct nvBench 2.0, we obtained data tables from nvBench 1.0 [16] and  
94 BIRD [21], ensuring broad coverage of the domain and relevance in the real world. We retained  
95 select seed visualizations from [16] while introducing new ones to address the limited variety of  
96 chart types. Novel chart types, such as boxplots and heatmaps, and additional encoding channels,  
97 like "size" (enabling scatterplots to transition to bubble charts), were incorporated to enhance visual  
98 encoding diversity and expressiveness.

99 **Step 1: Ambiguity-aware VIS Tree Synthesis.** We start the process by building an initial vis tree  $T$   
100 from a seed vis  $v$ . The tree  $T$ , structured as an Abstract Syntax Tree (AST) based on vis grammar,  
101 encodes components such as data mappings, mark types, and encoding channels. Each node in  $T$   
102 represents a component in vis and whether it has ambiguity. We then extract ambiguity metadata from  
103 the database  $D$  using a structured knowledge graph (KG). This involves a KG-driven semantic alias  
104 identification process and an LLM-driven refinement process. Metadata systematically categorizes  
105 semantic ambiguities within the table schema to guide the creation of ambiguity-aware vis trees.

106 Subsequently, we transform  $T$  into an ambiguity-aware tree  $T'$  through a controlled ambiguity injection  
107 process. This involves two operations: (1) *injecting ambiguous nodes* to add semantically ambiguous  
108 components, (2) *injecting implicit nodes* to replace fixed components with a blank placeholder, or to  
109 add unspecified but essential components for the altered vis tree. This injection process ensures that  
110  $T'$  can branch into multiple valid interpretations, capturing the full spectrum of possible outcomes for  
111 an ambiguous text query.

**Step 2: Valid VIS Set Synthesis.** The partially ambiguous vis tree  $T'$  is processed through an Answer Set Programming (ASP) solver [22], which applies grammar constraints to transform the ambiguous tree into a resolved vis set  $\mathbf{v} = \{v_1, \dots, v_k\}$ . The number of resulting vis,  $k = |\mathbf{v}|$ , indicates the ambiguity level—how many distinct interpretations the solver deems valid for given  $T$ .

The completeness of a valid answer set is ensured by the ASP solver’s exhaustive enumeration of all stable models satisfying the encoded vis constraints through its declarative logic programming framework [22]. This guarantees that all possible answers consistent with the input text query and grammar constraints are generated, providing a comprehensive set of solutions for ambiguous queries. Please refer to Appendix B.2 for more details.

**Step 3: Ambiguous Query Synthesis.** We leverage an LLM-based Query Generator to synthesize an ambiguous text query  $q$  for each modified vis tree  $T'$ , incorporating the newly introduced ambiguities into a single query. This approach ensures that every synthesized valid answer in set  $\mathbf{v} = \{v_1, \dots, v_k\}$  faithfully represents the ambiguous intents of the query. Finally, an LLM-based Query Verifier checks consistency, confirming that the final text query accurately reflects all valid answers. Please refer to Section B.3 in the Appendix for more details.

**Step 4: Ambiguity-resolved Reasoning Paths Synthesis.** Finally, we generate *stepwise disambiguation reasoning paths* to guide the resolution of each ambiguity in producing every valid vis. These paths are built using an LLM with an automated self-consistency validation mechanism to ensure accuracy. By systematically extracting and articulating the discrete reasoning steps from the initial text query  $q$  to the set of vis  $\mathbf{v}$ , we provide a transparent and comprehensive explanation of how each query maps to its corresponding vis outcomes. Details are provided in Section B.4.

**Dataset Balancing and Quality Control.** We implement several strategies to ensure the high quality of our nvBench 2.0. (1) *Ambiguity Level Regulation:* We constrain the ambiguity level to  $k \leq 5$ , ensuring that each retained sample illustrates a meaningfully different way of interpreting the partially ambiguous tree. (2) *Visualization Diversity:* From a large pool of randomly generated seed visualizations and ambiguity-injected trees, we compute pairwise distances and select the most diverse subset to enhance the variety of visualizations. (3) *Query Verification:* In the query synthesis process, although GPT-4o effectively captures most ambiguous nodes in  $T'$ , it introduces unintended facts in approximately 5% of generated queries. We implement a fact verification process to identify and refine these unwanted intents. We then conduct manual reviews by two postgraduate students to re-check the identified queries. This pipeline ensures that each ambiguous aspect in vis tree synthesis phase is clearly reflected in the final mapping of *Text2VIS*, allowing researchers and practitioners to evaluate how effectively models handle and explain different interpretations.

## 2.2 nvBench 2.0 Characteristics

This section describes the key characteristics of nvBench 2.0, focusing on the interaction of ambiguity types, levels, patterns, query styles, and visualizations.

**Ambiguity Types and Levels.** An important contribution of nvBench 2.0 is the systematic introduction of controlled ambiguity types and ambiguity levels. Figure 3 (a) categorizes ambiguity by type: Data Transformation (DT) ambiguities are most prevalent (50.55%), followed by Channel Mapping (CM) ambiguities (23.30%), with Data Selection (DS) and Chart Type Selection (CT) ambiguities represented by 16.10% and 10.00%, respectively. As shown in Figure 3 (b), the majority of samples (44.10%) have an ambiguity level of 2, indicating that two valid visualizations exist for each text query. nvBench 2.0 also contains a substantial number of samples with ambiguity levels of 3, 4, and 5, enabling a thorough evaluation of systems under increasingly complex ambiguous scenarios.

**Ambiguity Combination Patterns.** Since multiple ambiguity types can occur in a single data sample, Table 2 shows the most frequent ambiguity combination patterns. The most common pattern is CM+DT (2,190 instances), followed by CM+DS (486), while more complex multi-category ambiguities are less frequent. Channel Mapping and Data transformation ambiguities often co-occur with other ambiguity types. This distribution underscores the challenge of resolving overlapping ambiguity types in vis generation tasks.

**Text Queries.** Figure 3(c) presents the query style distribution. We balance the distribution to follow the observation in work [17], where command-based queries are most frequent, question-based and

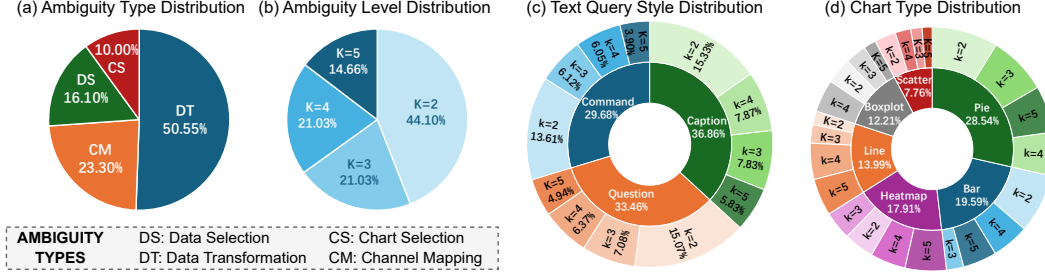


Figure 3: Key Statistics of nvBench 2.0.

Table 2: Statistics of Ambiguity Combination Patterns

Pattern	Count	Pattern	Count
CM+DT	2190	CM+DS	486
CM+DS+DT	364	CM+CS+DT	171
CM+CS	158	CS+DT	34

caption-like queries are also useful but less frequent. Appendix C provides a detailed breakdown of query styles across different chart types, along with word count statistics.

**Visualizations.** Figure 3(d) illustrates the distribution of the chart types. nvBench 2.0 comprises six chart types, with Bar and Pie being the most prevalent, aligning their common use in the real world. Other chart types cater to more specialized analytical purposes, aligning with typical vis practices. Notably, the ambiguity levels are distributed similarly across all chart types, ensuring a well-balanced data distribution to evaluate *Text2VIS* systems under varying degrees of ambiguity.

### 3 Step-Text2Vis for Ambiguous *Text2VIS*

In this section, we present Step-Text2Vis, a new model for the ambiguous *Text2VIS* task. Step-Text2Vis addresses ambiguity by incorporating a step-wise reasoning process, as detailed in Section B.4, and leveraging the rich step-wise data provided by nvBench 2.0. Built on base LLMs, Step-Text2Vis is fine-tuned on nvBench 2.0 using a pipeline that aligns its outputs with the dataset’s reasoning paths via supervised fine-tuning and step-wise preference optimization (Step-DPO) [23].

#### 3.1 Preference Optimization with Step-DPO

Previous *Text2VIS* methods have typically employed either prompting LLMs [24] or fine-tuning LLMs [19], where the LLM is directly tasked with generating the final vis definition based on TEXT and table schema information.

Recently, process supervision paradigms [25] and preference optimization techniques [23] have demonstrated significant advancements across various domain tasks. A pivotal aspect in validating the effectiveness of nvBench 2.0 is determining how to leverage the step-wise disambiguation reasoning paths within the nvBench 2.0 dataset to provide process supervision and enhance model performance. Consequently, we adopt the Step-DPO [23], which utilizes step-wise paired correct and incorrect samples for preference optimization, thereby delivering rich process supervision signals to the model and fostering improved accuracy at each step.

Formally, we define an input prompt  $x$  and an vis answer  $y$ , where  $x$  includes TEXT and table schema, and  $y$  can be represented as  $s_1 \oplus \dots \oplus s_n$ , where  $s_i$  denotes the  $i$ -th reasoning step defined in Section B.4. Given the input  $x$  and a sequence of correct preceding reasoning steps  $s_{1 \sim k-1} = s_1 \oplus \dots \oplus s_{k-1}$ , Step-DPO aims to maximize the probability of the correct next reasoning step  $s_{win}$  and minimize the probability of the incorrect one  $s_{lose}$ . This objective can be formulated as:

$$\mathcal{L}(\theta) = -\mathbb{E}_{(x, s_{1 \sim k-1}, s_{win}, s_{lose}) \sim D_p} \left[ \log \sigma \left( \beta \log \frac{\pi_{\theta}(s_{win}|x, s_{1 \sim k-1})}{\pi_{ref}(s_{win}|x, s_{1 \sim k-1})} - \beta \log \frac{\pi_{\theta}(s_{lose}|x, s_{1 \sim k-1})}{\pi_{ref}(s_{lose}|x, s_{1 \sim k-1})} \right) \right] \quad (1)$$

where  $D_p$  represents a step-wise preference dataset.  $\pi_\theta(\cdot|x, s_{1 \sim k-1})$  denotes the policy model to be optimized, while  $\pi_{ref}(\cdot|x, s_{1 \sim k-1})$  refers to the reference model, which remains unchanged during the training process. The hyperparameter  $\beta$  controls the divergence between the optimized policy and the reference model.

### 3.2 Cold-start with Supervised Fine-tuning

Prior studies, such as those employing Chain-of-Thought (CoT) [26] prompting, have demonstrated the capability of LLMs to engage in step-wise reasoning through the utilization of simple “think step-by-step” instructions. However, under this paradigm, the planning of steps and the format of output are indiscriminate. This poses challenges in the precise extraction of answers corresponding to each individual step, and consequently, impedes the accurate alignment with the step-wise data provided within the nvBench 2.0 dataset for the purpose of validating step-level correctness. To address this limitation, we use nvBench 2.0 training set and employ Supervised Fine-Tuning (SFT) as a cold-start mechanism to facilitate the LLM’s learning of our predefined step-wise output format. The specific training setup and prompt templates are in Appendix D.

### 3.3 Step-wise Preference Data Construction

A crucial aspect of Step-DPO is the acquisition of a step-wise preference dataset. As described in Section 3.1, our nvBench 2.0 dataset contains step-wise ground-truth. Therefore, we adopt an online data collection strategy. Initially, we utilize a model that has undergone Supervised Fine-Tuning (SFT) cold-start to perform inference on the nvBench 2.0 development set, yielding  $D_0 = \{(x, \hat{y})\}$ , where  $\hat{y}$  represents the model’s step-wise output, expressible as  $\hat{s}_1 \oplus \dots \oplus \hat{s}_n$ . Subsequently, we conduct a step-wise evaluation comparing  $\hat{y}$  with the ground-truth  $y$ , verifying the correctness of each step until the identification of the first error, and recording its corresponding step number  $k$ . We designate the erroneous step  $\hat{s}_k$  as the incorrect reasoning step  $s_{lose}$ , and the ground-truth step  $s_k$  as the correct reasoning step  $s_{win}$ . The construction of the preference dataset  $D_p = \{(x, \hat{s}_{1 \sim k-1}, s_{win}, s_{lose})\}$  is then readily achieved through the integration of input  $x$  and previous reasoning steps  $\hat{s}_{1 \sim k-1}$ .

## 4 Experiments

In our experiments, we aim to answer two fundamental questions about ambiguous *Text2VIS* tasks. First, how effectively do different approaches—including state-of-the-art LLMs and our proposed Step-Text2Vis—handle vis generation from text queries with varying levels of ambiguity? Second, what impact does step-wise reasoning have on performance across different chart types and ambiguity scenarios compared to direct generation approaches? To address these questions, we designed a comprehensive evaluation framework comparing different methods with or without stepwise reasoning. We assess performance using standard information retrieval metrics across multiple levels of ambiguity.

### 4.1 Experimental Setup

**Datasets.** We use nvBench 2.0 for our experiments and randomly divide the data set into training, development, and testing sets in a ratio of 80%, 10%, and 10%, containing 6377, 750, and 751 samples, respectively.

**Methods.** We evaluate the performance on ambiguous *Text2VIS* tasks using both prompting-based and fine-tuning-based methods with nvBench 2.0. The primary goal is to assess the model’s ability to generate diverse and semantically accurate visualizations in response to ambiguous text queries. Please refer to Section D in the Appendix for more details.

**Prompting-based Methods.** We evaluate two prompting strategies: Direct Prompting and Step Prompting. In Direct Prompting, the model receives structured *Data Schema Information* and a *text query* as input, subsequently generating 1-5 distinct visualizations to cover possible interpretations of the ambiguous query. This strategy is applied to the **GPT-4o-mini**, **GPT-4o**, and **Qwen2.5-7B** models. For Step Prompting, models are guided to “think step-by-step”, explicitly articulating their reasoning process before generating vis. Models utilizing this approach are denoted by a suffix “-Step” (e.g., **GPT-4o-mini-Step**, **GPT-4o-Step**, **Qwen2.5-7B-Step**).

Table 3: Overall performance comparison between different models on nvBench 2.0.

Model	R@K(%)			P@K(%)			F1@K(%)		
	K=1	K=3	K=5	K=1	K=3	K=5	K=1	K=3	K=5
GPT-4o-mini	34.72	51.92	54.65	91.88	86.86	81.76	49.31	59.73	57.60
GPT-4o	36.56	46.35	46.79	97.07	<b>95.83</b>	<b>95.52</b>	51.96	58.96	59.03
Qwen2.5-7B	34.65	46.20	47.17	92.68	90.68	89.33	49.34	57.09	56.67
GPT-4o-mini-Step	35.13	47.68	47.91	93.48	92.54	92.08	49.96	59.29	59.10
GPT-4o-Step	36.30	48.92	49.21	96.94	95.47	95.08	51.72	60.78	60.66
Qwen2.5-7B-Step	35.20	61.86	64.08	93.61	89.26	86.23	50.05	68.56	67.76
Qwen2.5-7B-SFT	33.23	73.44	76.32	88.42	83.36	80.18	47.26	75.79	75.30
<b>Step-Text2Vis (ours)</b>	<b>37.30</b>	<b>77.09</b>	<b>79.74</b>	<b>99.20</b>	94.27	91.17	<b>53.04</b>	<b>81.50</b>	<b>80.88</b>

*Supervised Fine-tuning Method.* We performed supervised fine-tuning on the Qwen2.5-7B-Instruct model, resulting in a baseline model named **Qwen2.5-7B-SFT**. This model was trained using the standard SFT approach in the training set, enabling the direct generation of multiple vis answers for the interpretation of ambiguities.

*Preference Learning Method.* We developed an advanced model, referred to as **Step-Text2Vis**, designed to handle ambiguity in *Text2VIS* through step-wise reasoning as detailed in Section 3. Following an initial supervised fine-tuning, we constructed a preference dataset from the nvBench 2.0 development set specifically for the preference training of Step-Text2Vis.

**Evaluation Metrics.** Following prior work [27, 28, 16], we adopt the following metrics: **Precision@K (P@K)**: Measures the proportion of valid vis in the top K output, reflecting the precision of the recommendation. **Recall@K (R@K)**: Evaluates the proportion of valid vis identified, indicating coverage of the golden vis space. **F1@K**: Balances precision and recall, ensuring both high accuracy and comprehensive coverage. All metrics are reported for  $K \in 1, 3, 5$  to assess performance across varying recommendation set sizes.

## 4.2 Experimental Results

**Overall Results.** Table 3 presents the comprehensive performance evaluation of different models on nvBench 2.0. Our proposed Step-Text2Vis achieves state-of-the-art performance across most metrics, significantly outperforming both prompting-based and fine-tuning-based baselines. Specifically, Step-Text2Vis obtains the highest F1@3 (81.50%) and F1@5 (80.88%), demonstrating its superior ability to handle ambiguity in *Text2VIS* tasks. Step-wise reasoning consistently improves performance across all models. For both GPT-4o and Qwen2.5-7B, the “-Step” variants show notable improvements in F1 scores compared to their direct prompting counterparts. This validates our hypothesis that decomposing complex vis reasoning into explicit steps helps resolve ambiguity more effectively. Fine-tuning on nvBench 2.0 substantially enhances recall at higher K values. Qwen2.5-7B-SFT achieves 73.44% R@3 and 76.32% R@5, significantly higher than prompt-based methods, indicating better coverage of the valid vis space. However, it sacrifices some precision compared to prompting approaches. Our preference-optimized Step-Text2Vis achieves the best balance between precision and recall. At  $K=1$ , it maintains exceptional precision (99.20%) while improving recall over all baselines, and at  $K=3$  and  $K=5$ , it achieves substantial gains in recall without significant precision degradation.

**Performance Analysis Across Chart Types.** Figure 4 presents a radar chart of F1 scores for different methods across various chart types and ambiguity levels. We have the following observations.

First, Step-Text2Vis consistently outperforms other models across most chart types and ambiguity levels. These results demonstrate that the step-wise reasoning approach significantly enhances performance on ambiguous *Text2VIS* tasks. Second, models with step-wise reasoning (those with “-Step” suffix) generally outperform direct prompting models, confirming the effectiveness of breaking complex vis reasoning into explicit steps.

- **The Impact of Chart Types.** The experimental results reveal that different chart types exhibit varying challenges for models. Boxplot and Scatter charts generally achieve higher F1 scores, indicating they are easier for models to handle. In contrast, Pie charts perform worse at higher ambiguity levels, while Line charts consistently show lower accuracy across all ambiguity levels,



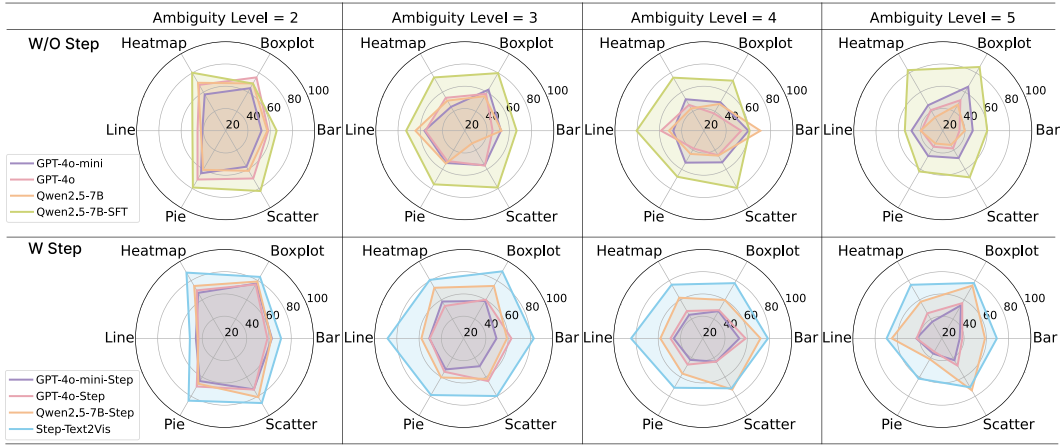


Figure 4: F1 across different models and ambiguity levels.

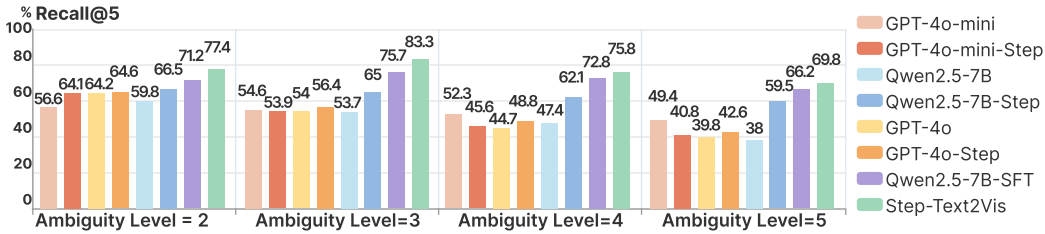


Figure 5: Recall across different models and ambiguity levels.

with F1 scores only around 40% to 51%, even at lower ambiguity levels. These findings suggest that certain chart types pose greater challenges for model interpretation and generation.

- **The Impact of Ambiguity Levels.** The data shows a clear degradation in performance as the ambiguity level increases: At ambiguity level 2, most models maintain relatively high F1 scores (60-80%). By ambiguity level 5, even the best performing models struggle to maintain the same level of performance, with Qwen2.5-7B-Step achieving 41.55% and Step-Text2Vis achieving 61% F1 score for pie charts at this highest ambiguity level. This pattern confirms the inherent challenge of handling highly ambiguous text queries.
- **Step-wise reasoning enhances performance but alters strengths for certain models.** Most prompting-based models exhibit improvements in performance when utilizing step-wise reasoning, while still maintaining their original strengths across chart types and ambiguity levels. However, for Qwen2.5-7B, the introduction of step-wise reasoning leads to notable shifts in its area of expertise. Specifically, Qwen2.5-7B-Step demonstrates significant improvements in Boxplot (74.47%) and Heatmap (72.59%) generation at Ambiguity Level 3—an enhancement that was not prominently observed in the base Qwen2.5-7B model. This suggests that step-wise reasoning not only improves overall performance but also reshapes the model’s proficiency across different tasks.

**Performance Analysis on Ambiguity Resolution Ability.** Figure 5 illustrates the Recall@5 metric, measuring each model’s ability to generate valid vis from text queries with varying ambiguity levels. Our Step-Text2Vis shows superior recall performance across all ambiguity levels. At ambiguity level 3, it achieves 83.3% recall, significantly outperforming other models. Further analysis across ambiguity levels reveals the following insights:

- **Step-wise reasoning significantly enhances performance.** Models implementing step-by-step reasoning methodologies consistently demonstrate superior performance compared to their non-stepwise counterparts. For example, Qwen2.5-7B-Step exhibits markedly improved performance metrics relative to the base Qwen2.5-7B implementation.
- **Inverse correlation between performance and ambiguity.** The experimental results indicate a consistent negative correlation between recall performance and ambiguity level for the majority of models evaluated. This trend confirms the inherently increasing complexity of vis generation as the ambiguity level intensifies.



- **Maximum performance differentiation occurs at intermediate levels of ambiguity.** The performance delta between the evaluated models reaches its maximum when AL equals 3 or 4, suggesting that these intermediate levels provide optimal conditions for discriminating between different model capabilities.
- **Fine-tuning methods yield robust performance under increasing ambiguity.** While performance degradation is observed across all models as ambiguity increases, models employing Supervised Fine-Tuning and Preference Learning methodologies maintain superior performance characteristics at elevated ambiguity levels. Notably, the performance differential between Step-Text2Vis and alternative approaches expands proportionally with increasing ambiguity.

**Key Implications for Ambiguous *Text2VIS* Systems.** Our experimental results reveal several important implications for the design of *Text2VIS* systems that can effectively handle ambiguity. First, the performance improvements achieved through step-wise reasoning highlight the importance of decomposing complex tasks into interpretable steps, similar to how humans reason through ambiguous text queries, rather than relying on direct translation. Second, the observed performance variations across different chart types and ambiguity levels suggest that future *Text2VIS* systems should adaptively select reasoning strategies based on both the queries’ characteristics and the target vis type. Third, the superior performance of Step-Text2Vis, particularly at higher ambiguity levels, demonstrates that preference-optimized models can learn to effectively balance precision and recall, maintaining high accuracy while capturing the full range of valid interpretations. These findings point toward a paradigm shift in Step-Text2Vis development: from single-output systems toward multi-interpretation frameworks that explicitly model and resolve ambiguity through structured reasoning processes.

## 5 Related Work

***Text2VIS* benchmarks.** As the predecessor of nvBench 2.0, nvBench 1.0 [16] is a commonly used *Text2VIS* benchmark that leverages the semantic alignment between queries and Visualization Query Language to construct datasets. Building on this, benchmarks like Dial-NVBench [19] introduce multi-turn dialogues, and VisEval [29] further expand *Text2VIS* evaluation. However, they primarily focus on well-specified queries with a single correct visualization. While datasets like ChartGPT [30], Text2Analysis [31], QUDA [18], and NLV [17] include ambiguous queries, they lack explicit ambiguity type definitions and comprehensive valid chart sets. In contrast, we introduce nvBench 2.0, the first ambiguity-aware *Text2VIS* benchmark designed to address this gap.

**LLMs for Data Synthesis.** LLMs have shown promise in data synthesis across various domains, enhancing data diversity and model generalization [32–42]. This includes the *Text2VIS* domain, where VL2NL [15] utilizes LLMs to generate descriptions from vis. Our approach shares a “reverse engineering” philosophy with ScienceBenchmark [43], and generates queries from ambiguity-aware vis tree to capture ambiguity in *Text2VIS* pairs, leveraging the structured nature of vis to define ambiguity types. Furthermore, we leverage LLMs to generate multi-step reasoning data, following the effectiveness demonstrated in works like Hunter et al. [44] and Step-DPO [23], to improve model reasoning and interpretability in *Text2VIS* tasks.

A more detailed discussion of related work can be found in Section A in the Appendix.

## 6 Conclusion

In this work, we introduced nvBench 2.0, the first benchmark designed for evaluating *Text2VIS* systems in scenarios involving ambiguous user queries. nvBench 2.0 was generated through a controlled ambiguity-injection pipeline, guaranteeing valid and interpretable results while offering step-wise disambiguation reasoning paths. By using nvBench 2.0, we offer a robust framework to assess *Text2VIS* systems’ ability to handle ambiguities that arise in real-world applications.

We also proposed Step-Text2Vis, an LLM-based *Text2VIS* model trained on nvBench 2.0, which significantly improves *Text2VIS* performance in ambiguous scenarios by applying step-wise preference optimization. Our experimental results demonstrate that Step-Text2Vis outperforms all existing baselines, establishing a new state-of-the-art for handling ambiguity in *Text2VIS* tasks.

## References

- [1] Leixian Shen, Enya Shen, Yuyu Luo, Xiaocong Yang, Xuming Hu, Xiongshuai Zhang, Zhiwei Tai, and Jianmin Wang. Towards Natural Language Interfaces for Data Visualization: A Survey. *IEEE Transactions on Visualization and Computer Graphics*, 29(6):3121–3144, 2023.
- [2] Henrik Voigt, Ozge Alacam, Monique Meuschke, Kai Lawonn, and Sina Zarrieß. The Why and The How: A Survey on Natural Language Interaction in Visualization. In *Proceedings of the 2022 Conference of the North American Chapter of the Association for Computational Linguistics: Human Language Technologies*, pages 348–374, Stroudsburg, PA, USA, 2022. ACL.
- [3] Yuyu Luo, Xuedi Qin, Nan Tang, Guoliang Li, and Xinran Wang. Deepeye: Creating good data visualizations by keyword search. In *SIGMOD Conference*, pages 1733–1736. ACM, 2018.
- [4] Yuyu Luo, Xuedi Qin, Chengliang Chai, Nan Tang, Guoliang Li, and Wenbo Li. Steerable self-driving data visualization. *IEEE Trans. Knowl. Data Eng.*, 34(1):475–490, 2022.
- [5] Nan Chen, Yuge Zhang, Jiahang Xu, Kan Ren, and Yuqing Yang. VisEval: A Benchmark for Data Visualization in the Era of Large Language Models. *IEEE Transactions on Visualization and Computer Graphics*, 31(1):1301–1311, 2025.
- [6] Yang Wu, Yao Wan, Hongyu Zhang, Yulei Sui, Wucui Wei, Wei Zhao, Guandong Xu, and Hai Jin. Automated Data Visualization from Natural Language via Large Language Models: An Exploratory Study. In *Proceedings of the ACM on Management of Data*, pages 1–28. ACM, 2024.
- [7] Yifan Wu, Lutao Yan, Leixian Shen, Yunhai Wang, Nan Tang, and Yuyu Luo. ChartInsights: Evaluating Multimodal Large Language Models for Low-Level Chart Question Answering. In *Findings of the Association for Computational Linguistics: EMNLP 2024*, pages 12174–12200, Stroudsburg, PA, USA, 2024. ACL.
- [8] Xinyu Liu, Shuyu Shen, Boyan Li, Peixian Ma, Runzhi Jiang, Yuyu Luo, Yuxin Zhang, Ju Fan, Guoliang Li, and Nan Tang. A survey of NL2SQL with large language models: Where are we, and where are we going? *CoRR*, abs/2408.05109, 2024.
- [9] Jiayi Zhang, Jinyu Xiang, Zhaoyang Yu, Fengwei Teng, Xiong-Hui Chen, Jiaqi Chen, Mingchen Zhuge, Xin Cheng, Sirui Hong, Jinlin Wang, Bingnan Zheng, Bang Liu, Yuyu Luo, and Chenglin Wu. AFlow: Automating agentic workflow generation. In *The Thirteenth International Conference on Learning Representations*, 2025.
- [10] Tong Gao, Mira Dontcheva, Eytan Adar, Zhicheng Liu, and Karrie G. Karahalios. Datatone: Managing ambiguity in natural language interfaces for data visualization. In *Proceedings of the 28th Annual ACM Symposium on User Interface Software & Technology*, UIST ’15, page 489–500, New York, NY, USA, 2015. Association for Computing Machinery.
- [11] Enamul Hoque, Vidya Setlur, Melanie Tory, and Isaac Dykeman. Applying Pragmatics Principles for Interaction with Visual Analytics. *IEEE Transactions on Visualization and Computer Graphics*, 24(1):309–318, 2018.
- [12] Yun Wang, Zhitao Hou, Leixian Shen, Tongshuang Wu, Jiaqi Wang, He Huang, Haidong Zhang, and Dongmei Zhang. Towards Natural Language-Based Visualization Authoring. *IEEE Transactions on Visualization and Computer Graphics*, 29(1):1222 – 1232, 2023.
- [13] Adithya Bhaskar, Tushar Tomar, Ashutosh Sathe, and Sunita Sarawagi. Benchmarking and improving text-to-sql generation under ambiguity. In *EMNLP*, pages 7053–7074. Association for Computational Linguistics, 2023.
- [14] Boyan Li, Yuyu Luo, Chengliang Chai, Guoliang Li, and Nan Tang. The dawn of natural language to SQL: are we fully ready? *Proc. VLDB Endow.*, 17(11):3318–3331, 2024.
- [15] Hyung-Kwon Ko, Hyeon Jeon, Gwanmo Park, Dae Hyun Kim, Nam Wook Kim, Juho Kim, and Jinwook Seo. Natural language dataset generation framework for visualizations powered by large language models. In *Proceedings of the CHI Conference on Human Factors in Computing Systems*, CHI ’24, New York, NY, USA, 2024. Association for Computing Machinery.
- [16] Yuyu Luo, Nan Tang, Guoliang Li, Chengliang Chai, Wenbo Li, and Xuedi Qin. Synthesizing natural language to visualization (nl2vis) benchmarks from nl2sql benchmarks. In *Proceedings of the 2021 International Conference on Management of Data*, SIGMOD ’21, page 1235–1247, New York, NY, USA, 2021. Association for Computing Machinery.

- [17] Arjun Srinivasan, Nikhila Nyapathy, Bongshin Lee, Steven M. Drucker, and John Stasko. Collecting and characterizing natural language utterances for specifying data visualizations. In *Proceedings of the 2021 CHI Conference on Human Factors in Computing Systems*, CHI '21, New York, NY, USA, 2021. Association for Computing Machinery.
- [18] Siwei Fu, Kai Xiong, Xiaodong Ge, Siliang Tang, Wei Chen, and Yingcai Wu. Quda: Natural Language Queries for Visual Data Analytics. *arXiv e-prints*, page arXiv:2005.03257, May 2020.
- [19] Yuanfeng Song, Xuefang Zhao, and Raymond Chi-Wing Wong. Marrying dialogue systems with data visualization: Interactive data visualization generation from natural language conversations, 2023.
- [20] Yuyu Luo, Jiawei Tang, and Guoliang Li. nvbench: A large-scale synthesized dataset for cross-domain natural language to visualization task. *CoRR*, abs/2112.12926, 2021.
- [21] Jinyang Li, Binyuan Hui, Ge Qu, Jiayi Yang, Binhua Li, Bowen Li, Bailin Wang, Bowen Qin, Rongyu Cao, Ruiying Geng, Nan Huo, Xuanhe Zhou, Chenhao Ma, Guoliang Li, Kevin C. C. Chang, Fei Huang, Reynold Cheng, and Yongbin Li. Can llm already serve as a database interface? a big bench for large-scale database grounded text-to-sqls, 2023.
- [22] Martin Gebser, Roland Kaminski, Benjamin Kaufmann, and Torsten Schaub. Multi-shot asp solving with clingo. *Theory and Practice of Logic Programming*, 19(1):27–82, 2019.
- [23] Xin Lai, Zhuotao Tian, Yukang Chen, Senqiao Yang, Xiangru Peng, and Jiaya Jia. Step-DPO: Step-wise Preference Optimization for Long-chain Reasoning of LLMs. *arXiv e-prints*, page arXiv:2406.18629, June 2024.
- [24] Lei Wang, Songheng Zhang, Yun Wang, Ee-Peng Lim, and Yong Wang. LLM4Vis: Explainable Visualization Recommendation using ChatGPT. In *Proceedings of the 2023 Conference on Empirical Methods in Natural Language Processing: Industry Track*, pages 675–692, Stroudsburg, PA, USA, 2023. ACL.
- [25] Hunter Lightman, Vineet Kosaraju, Yuri Burda, Harrison Edwards, Bowen Baker, Teddy Lee, Jan Leike, John Schulman, Ilya Sutskever, and Karl Cobbe. Let’s verify step by step. In *The Twelfth International Conference on Learning Representations, ICLR 2024, Vienna, Austria, May 7-11, 2024*. OpenReview.net, 2024.
- [26] Jason Wei, Xuezhi Wang, Dale Schuurmans, Maarten Bosma, Brian Ichter, Fei Xia, Ed H. Chi, Quoc V. Le, and Denny Zhou. Chain-of-thought prompting elicits reasoning in large language models. In Sanmi Koyejo, S. Mohamed, A. Agarwal, Danielle Belgrave, K. Cho, and A. Oh, editors, *Advances in Neural Information Processing Systems 35: Annual Conference on Neural Information Processing Systems 2022, NeurIPS 2022, New Orleans, LA, USA, November 28 - December 9, 2022*, 2022.
- [27] Yuyu Luo, Yihui Zhou, Nan Tang, Guoliang Li, Chengliang Chai, and Leixian Shen. Learned data-aware image representations of line charts for similarity search. *Proc. ACM Manag. Data*, 1(1):88:1–88:29, 2023.
- [28] Yuyu Luo, Nan Tang, Guoliang Li, Jiawei Tang, Chengliang Chai, and Xuedi Qin. Natural language to visualization by neural machine translation. *IEEE Transactions on Visualization and Computer Graphics*, 28(1):217–226, jan 2022.
- [29] Nan Chen, Yuge Zhang, Jiahang Xu, Kan Ren, and Yuqing Yang. Viseval: A benchmark for data visualization in the era of large language models. *IEEE Transactions on Visualization and Computer Graphics*, 31:1301–1311, 2024.
- [30] Yuan Tian, Weiwei Cui, Dazhen Deng, Xinjing Yi, Yurun Yang, Haidong Zhang, and Yingcai Wu. Chartgpt: Leveraging llms to generate charts from abstract natural language. *IEEE Transactions on Visualization and Computer Graphics*, 31(3):1731–1745, 2025.
- [31] Xinyi He, Mengyu Zhou, Xinrun Xu, Xiaojun Ma, Rui Ding, Lun Du, Yan Gao, Ran Jia, Xu Chen, Shi Han, Zejian Yuan, and Dongmei Zhang. Text2analysis: A benchmark of table question answering with advanced data analysis and unclear queries, 2023.
- [32] Ann Yuan, Daphne Ippolito, Vitaly Nikolaev, Chris Callison-Burch, Andy Coenen, and Sebastian Gehrmann. SynthBio: A Case Study in Human-AI Collaborative Curation of Text Datasets. *arXiv e-prints*, page arXiv:2111.06467, November 2021.
- [33] Thomas Hartvigsen, Saadia Gabriel, Hamid Palangi, Maarten Sap, Dipankar Ray, and Ece Kamar. ToxiGen: A large-scale machine-generated dataset for adversarial and implicit hate speech detection. In Smaranda Muresan, Preslav Nakov, and Aline Villavicencio, editors, *Proceedings of the 60th Annual Meeting of the Association for Computational Linguistics (Volume 1: Long Papers)*, pages 3309–3326, Dublin, Ireland, May 2022. Association for Computational Linguistics.

- [34] Yizhang Zhu, Shiyin Du, Boyan Li, Yuyu Luo, and Nan Tang. Are large language models good statisticians? In *NeurIPS*, 2024.
- [35] Xudong Yang, Yifan Wu, Yizhang Zhu, Nan Tang, and Yuyu Luo. Askchart: Universal chart understanding through textual enhancement. *CoRR*, abs/2412.19146, 2024.
- [36] Shuyu Shen, Sirong Lu, Leixian Shen, Zhonghua Sheng, Nan Tang, and Yuyu Luo. Ask humans or ai? exploring their roles in visualization troubleshooting. *CoRR*, abs/2412.07673, 2024.
- [37] Boyan Li, Jiayi Zhang, Ju Fan, Yanwei Xu, Chong Chen, Nan Tang, and Yuyu Luo. Alpha-sql: Zero-shot text-to-sql using monte carlo tree search, 2025.
- [38] Peixian Ma, Boyan Li, Runzhi Jiang, Ju Fan, Nan Tang, and Yuyu Luo. A plug-and-play natural language rewriter for natural language to sql, 2024.
- [39] Marco Tulio Ribeiro and Scott Lundberg. Adaptive testing and debugging of NLP models. In Smaranda Muresan, Preslav Nakov, and Aline Villavicencio, editors, *Proceedings of the 60th Annual Meeting of the Association for Computational Linguistics (Volume 1: Long Papers)*, pages 3253–3267, Dublin, Ireland, May 2022. Association for Computational Linguistics.
- [40] Ateret Anaby-Tavor, Boaz Carmeli, Esther Goldbraich, Amir Kantor, George Kour, Segev Shlomov, Naama Tepper, and Naama Zwerdling. Not Enough Data? Deep Learning to the Rescue! *arXiv e-prints*, page arXiv:1911.03118, November 2019.
- [41] Kang Min Yoo, Dongju Park, Jaewook Kang, Sang-Woo Lee, and Woomyoung Park. GPT3Mix: Leveraging large-scale language models for text augmentation. In Marie-Francine Moens, Xuanjing Huang, Lucia Specia, and Scott Wen-tau Yih, editors, *Findings of the Association for Computational Linguistics: EMNLP 2021*, pages 2225–2239, Punta Cana, Dominican Republic, November 2021. Association for Computational Linguistics.
- [42] Maximillian Chen, Alexandros Papangelis, Chenyang Tao, Andrew Rosenbaum, Seokhwan Kim, Yang Liu, Zhou Yu, and Dilek Z. Hakkani-Tür. Weakly supervised data augmentation through prompting for dialogue understanding. *ArXiv*, abs/2210.14169, 2022.
- [43] Yi Zhang, Jan Deriu, George Katsogiannis-Meimarakis, Catherine Kosten, Georgia Koutrika, and Kurt Stockinger. Sciencebenchmark: A complex real-world benchmark for evaluating natural language to sql systems. *Proc. VLDB Endow.*, 17(4):685–698, December 2023.
- [44] Hunter Lightman, Vineet Kosaraju, Yura Burda, Harrison Edwards, Bowen Baker, Teddy Lee, Jan Leike, John Schulman, Ilya Sutskever, and Karl Cobbe. Let’s verify step by step. *ArXiv*, abs/2305.20050, 2023.
- [45] Yilin Ye, Jianing Hao, Yihan Hou, Zhan Wang, Shishi Xiao, Yuyu Luo, and Wei Zeng. Generative AI for visualization: State of the art and future directions. *CoRR*, abs/2404.18144, 2024.
- [46] Yuanfeng Song, Xuefang Zhao, Raymond Chi-wing Wong, and Di Jiang. RGVisNet: A Hybrid Retrieval-Generation Neural Framework Towards Automatic Data Visualization Generation. In *Proceedings of the 28th ACM SIGKDD Conference on Knowledge Discovery and Data Mining*, pages 1646–1655, New York, NY, USA, aug 2022. ACM.
- [47] Zhengkai Wu, Vu Le, Ashish Tiwari, Sumit Gulwani, Arjun Radhakrishna, Ivan Radiček, Gustavo Soares, Xinyu Wang, Zhenwen Li, and Tao Xie. NL2Viz: natural language to visualization via constrained syntax-guided synthesis. In *Proceedings of the 30th ACM Joint European Software Engineering Conference and Symposium on the Foundations of Software Engineering*, pages 972–983, New York, NY, USA, nov 2022. ACM.
- [48] Yuan Tian, Weiwei Cui, Dazhen Deng, Xinjing Yi, Yurun Yang, Haidong Zhang, and Yingcai Wu. ChartGPT: Leveraging LLMs to Generate Charts from Abstract Natural Language. *IEEE Transactions on Visualization and Computer Graphics*, 14(8):1–15, 2024.
- [49] Shuaimin Li, Xuanang Chen, Yuanfeng Song, Yunze Song, and Chen Zhang. *Prompt4Vis: Prompting Large Language Models with Example Mining and Schema Filtering for Tabular Data Visualization*, volume 1. Association for Computing Machinery, 2024.
- [50] Irina Saparina and Mirella Lapata. Ambrosia: A benchmark for parsing ambiguous questions into database queries. *ArXiv*, abs/2406.19073, 2024.
- [51] Vidya Setlur, Sarah E. Battersby, Melanie Tory, Rich Gossweiler, and Angel X. Chang. Eviza: A natural language interface for visual analysis. In *Proceedings of the 29th Annual Symposium on User Interface Software and Technology*, UIST ’16, page 365–377, New York, NY, USA, 2016. Association for Computing Machinery.

- [52] Vidya Setlur, Melanie Tory, and Alex Djalali. Inferencing underspecified natural language utterances in visual analysis. In *Proceedings of the 24th International Conference on Intelligent User Interfaces*, IUI '19, page 40–51, New York, NY, USA, 2019. Association for Computing Machinery.
- [53] Robyn Speer, Joshua Chin, and Catherine Havasi. Conceptnet 5.5: an open multilingual graph of general knowledge. In *Proceedings of the Thirty-First AAAI Conference on Artificial Intelligence*, AAAI'17, page 4444–4451. AAAI Press, 2017.
- [54] Dominik Moritz, Chenglong Wang, Greg L Nelson, Halden Lin, Adam M Smith, Bill Howe, and Jeffrey Heer. Formalizing visualization design knowledge as constraints: Actionable and extensible models in draco. *IEEE transactions on visualization and computer graphics*, 25(1):438–448, 2018.
- [55] Junran Yang, Péter Ferenc Gyarmati, Zehua Zeng, and Dominik Moritz. Draco 2: An extensible platform to model visualization design. In *2023 IEEE Visualization and Visual Analytics (VIS)*, pages 166–170. IEEE, 2023.
- [56] Leixian Shen, Enya Shen, Zhiwei Tai, Yihao Xu, Jiaxiang Dong, and Jianmin Wang. Visual Data Analysis with Task-Based Recommendations. *Data Science and Engineering*, 7(4):354–369, 2022.
- [57] Che Jiang, Biqing Qi, Xiangyu Hong, Dayuan Fu, Yang Cheng, Fandong Meng, Mo Yu, Bowen Zhou, and Jie Zhou. On large language models' hallucination with regard to known facts. In Kevin Duh, Helena Gomez, and Steven Bethard, editors, *Proceedings of the 2024 Conference of the North American Chapter of the Association for Computational Linguistics: Human Language Technologies (Volume 1: Long Papers)*, pages 1041–1053, Mexico City, Mexico, June 2024. ACL.
- [58] Yixuan Weng, Minjun Zhu, Fei Xia, Bin Li, Shizhu He, Shengping Liu, Bin Sun, Kang Liu, and Jun Zhao. Large language models are better reasoners with self-verification. In Houda Bouamor, Juan Pino, and Kalika Bali, editors, *Findings of the Association for Computational Linguistics: EMNLP 2023*, pages 2550–2575, Singapore, December 2023. ACL.
- [59] Leixian Shen, Enya Shen, Zhiwei Tai, Yiran Song, and Jianmin Wang. TaskVis: Task-oriented Visualization Recommendation. In *Proceedings of the 23th Eurographics Conference on Visualization, EuroVis'21*, pages 91–95. Eurographics, 2021.
- [60] Arpit Narechania, Arjun Srinivasan, and John Stasko. NL4DV: A Toolkit for Generating Analytic Specifications for Data Visualization from Natural Language Queries. *IEEE Transactions on Visualization and Computer Graphics*, 27(2):369–379, 2021.
- [61] Yupeng Xie, Yuyu Luo, Guoliang Li, and Nan Tang. Haichart: Human and AI paired visualization system. *Proc. VLDB Endow.*, 17(11):3178–3191, 2024.
- [62] Guozheng Li, Runfei Li, Yunshan Feng, Yu Zhang, Yuyu Luo, and Chi Harold Liu. Coinsight: Visual storytelling for hierarchical tables with connected insights. *IEEE Trans. Vis. Comput. Graph.*, 30(6):3049–3061, 2024.
- [63] OpenAI, Josh Achiam, Steven Adler, Sandhini Agarwal, Lama Ahmad, Ilge Akkaya, Florencia Leoni Aleman, Diogo Almeida, Janko Altschmidt, Sam Altman, Shyamal Anadkat, Red Avila, Igor Babuschkin, Suchir Balaji, Valerie Balcom, Paul Baltescu, Haiming Bao, Mohammad Bavarian, Jeff Belgum, Irwan Bello, Jake Berdine, Gabriel Bernadett-Shapiro, Christopher Berner, Lenny Bogdonoff, Oleg Boiko, Madelaine Boyd, Anna-Luisa Brakman, Greg Brockman, Tim Brooks, Miles Brundage, Kevin Button, Trevor Cai, Rosie Campbell, Andrew Cann, Brittany Carey, Chelsea Carlson, Rory Carmichael, Brooke Chan, Che Chang, Fotis Chantzis, Derek Chen, Sully Chen, Ruby Chen, Jason Chen, Mark Chen, Ben Chess, Chester Cho, Casey Chu, Hyung Won Chung, Dave Cummings, Jeremiah Currier, Yunxing Dai, Cory Decareaux, Thomas Degry, Noah Deutsch, Damien Deville, Arka Dhar, David Dohan, Steve Dowling, Sheila Dunning, Adrien Ecoffet, Atty Eleti, Tyna Eloundou, David Farhi, Liam Fedus, Niko Felix, Simón Posada Fishman, Juston Forte, Isabella Fulford, Leo Gao, Elie Georges, Christian Gibson, Vik Goel, Tarun Gogineni, Gabriel Goh, Rapha Gontijo-Lopes, Jonathan Gordon, Morgan Grafstein, Scott Gray, Ryan Greene, Joshua Gross, Shixiang Shane Gu, Yufei Guo, Chris Hallacy, Jesse Han, Jeff Harris, Yuchen He, Mike Heaton, Johannes Heidecke, Chris Hesse, Alan Hickey, Wade Hickey, Peter Hoeschele, Brandon Houghton, Kenny Hsu, Shengli Hu, Xin Hu, Joost Huizinga, Shantanu Jain, Shawn Jain, Joanne Jang, Angela Jiang, Roger Jiang, Haozhun Jin, Denny Jin, Shino Jomoto, Billie Jonn, Heewoo Jun, Tomer Kaftan, Łukasz Kaiser, Ali Kamali, Ingmar Kanitscheider, Nitish Shirish Keskar, Tabarak Khan, Logan Kilpatrick, Jong Wook Kim, Christina Kim, Yongjik Kim, Jan Hendrik Kirchner, Jamie Kiros, Matt Knight, Daniel Kokotajlo, Łukasz Kondraciuk, Andrew Kondrich, Aris Konstantinidis, Kyle Kosic, Gretchen Krueger, Vishal Kuo, Michael Lampe, Ikai Lan, Teddy Lee, Jan Leike, Jade Leung, Daniel Levy, Chak Ming Li, Rachel Lim, Molly Lin, Stephanie Lin, Mateusz Litwin, Theresa Lopez, Ryan Lowe, Patricia Lue, Anna Makanju, Kim Malfacini, Sam Manning, Todor Markov, Yaniv Markovski, Bianca Martin, Katie Mayer, Andrew

575 Mayne, Bob McGrew, Scott Mayer McKinney, Christine McLeavey, Paul McMillan, Jake McNeil, David  
 576 Medina, Aalok Mehta, Jacob Menick, Luke Metz, Andrey Mishchenko, Pamela Mishkin, Vinnie Monaco,  
 577 Evan Morikawa, Daniel Mossing, Tong Mu, Mira Murati, Oleg Murk, David Mély, Ashvin Nair, Reiichiro  
 578 Nakano, Rajeev Nayak, Arvind Neelakantan, Richard Ngo, Hyeonwoo Noh, Long Ouyang, Cullen O’Keefe,  
 579 Jakub Pachocki, Alex Paino, Joe Palermo, Ashley Pantuliano, Giambattista Parascandolo, Joel Parish, Emy  
 580 Parparita, Alex Passos, Mikhail Pavlov, Andrew Peng, Adam Perelman, Filipe de Avila Belbute Peres,  
 581 Michael Petrov, Henrique Ponde de Oliveira Pinto, Michael, Pokorny, Michelle Pokrass, Vitchyr H. Pong,  
 582 Tolly Powell, Alethea Power, Boris Power, Elizabeth Proehl, Raul Puri, Alec Radford, Jack Rae, Aditya  
 583 Ramesh, Cameron Raymond, Francis Real, Kendra Rimbach, Carl Ross, Bob Rotsted, Henri Roussez, Nick  
 584 Ryder, Mario Saltarelli, Ted Sanders, Shibani Santurkar, Girish Sastry, Heather Schmidt, David Schnurr,  
 585 John Schulman, Daniel Selsam, Kyla Sheppard, Toki Sherbakov, Jessica Shieh, Sarah Shoker, Pranav Shyam,  
 586 Szymon Sidor, Eric Sigler, Maddie Simens, Jordan Sitkin, Katarina Slama, Ian Sohl, Benjamin Sokolowsky,  
 587 Yang Song, Natalie Staudacher, Felipe Petroski Such, Natalie Summers, Ilya Sutskever, Jie Tang, Nikolas  
 588 Tezak, Madeleine B. Thompson, Phil Tillet, Amin Tootoonchian, Elizabeth Tseng, Preston Tuggle, Nick  
 589 Turley, Jerry Tworek, Juan Felipe Cerón Uribe, Andrea Vallone, Arun Vijayvergiya, Chelsea Voss, Carroll  
 590 Wainwright, Justin Jay Wang, Alvin Wang, Ben Wang, Jonathan Ward, Jason Wei, CJ Weinmann, Akila  
 591 Welihinda, Peter Welinder, Jiayi Weng, Lilian Weng, Matt Wiethoff, Dave Willner, Clemens Winter, Samuel  
 592 Wolrich, Hannah Wong, Lauren Workman, Sherwin Wu, Jeff Wu, Michael Wu, Kai Xiao, Tao Xu, Sarah  
 593 Yoo, Kevin Yu, Qiming Yuan, Wojciech Zaremba, Rowan Zellers, Chong Zhang, Marvin Zhang, Shengjia  
 594 Zhao, Tianhao Zheng, Juntang Zhuang, William Zhuk, and Barret Zoph. Gpt-4 technical report, 2024.

595 [64] Jinze Bai, Shuai Bai, Yunfei Chu, Zeyu Cui, Kai Dang, Xiaodong Deng, Yang Fan, Wenbin Ge, Yu Han,  
 596 Fei Huang, Binyuan Hui, Luo Ji, Mei Li, Junyang Lin, Runji Lin, Dayiheng Liu, Gao Liu, Chengqiang Lu,  
 597 Keming Lu, Jianxin Ma, Rui Men, Xingzhang Ren, Xuancheng Ren, Chuanqi Tan, Sinan Tan, Jianhong Tu,  
 598 Peng Wang, Shijie Wang, Wei Wang, Shengguang Wu, Benfeng Xu, Jin Xu, An Yang, Hao Yang, Jian  
 599 Yang, Shusheng Yang, Yang Yao, Bowen Yu, Hongyi Yuan, Zheng Yuan, Jianwei Zhang, Xingxuan Zhang,  
 600 Yichang Zhang, Zhenru Zhang, Chang Zhou, Jingren Zhou, Xiaohuan Zhou, and Tianhang Zhu. Qwen  
 601 technical report, 2023.



## NeurIPS Paper Checklist

### 1. Claims

Question: Do the main claims made in the abstract and introduction accurately reflect the paper’s contributions and scope?

Answer: [Yes]

Justification: The abstract and introduction clearly outline the development of the dataset, the model, and their performance in handling ambiguous Text-to-Visualization tasks, aligning with the contributions detailed in Sections 2 to Section 3.

Guidelines:

- The answer NA means that the abstract and introduction do not include the claims made in the paper.
- The abstract and/or introduction should clearly state the claims made, including the contributions made in the paper and important assumptions and limitations. A No or NA answer to this question will not be perceived well by the reviewers.
- The claims made should match theoretical and experimental results, and reflect how much the results can be expected to generalize to other settings.
- It is fine to include aspirational goals as motivation as long as it is clear that these goals are not attained by the paper.

### 2. Limitations

Question: Does the paper discuss the limitations of the work performed by the authors?

Answer: [Yes]

Justification: The paper discusses limitations such as the scope of datasets, computational constraints, and potential biases in the ambiguity-injection pipeline in Section F, addressing the constraints of the work.

Guidelines:

- The answer NA means that the paper has no limitation while the answer No means that the paper has limitations, but those are not discussed in the paper.
- The authors are encouraged to create a separate "Limitations" section in their paper.
- The paper should point out any strong assumptions and how robust the results are to violations of these assumptions (e.g., independence assumptions, noiseless settings, model well-specification, asymptotic approximations only holding locally). The authors should reflect on how these assumptions might be violated in practice and what the implications would be.
- The authors should reflect on the scope of the claims made, e.g., if the approach was only tested on a few datasets or with a few runs. In general, empirical results often depend on implicit assumptions, which should be articulated.
- The authors should reflect on the factors that influence the performance of the approach. For example, a facial recognition algorithm may perform poorly when image resolution is low or images are taken in low lighting. Or a speech-to-text system might not be used reliably to provide closed captions for online lectures because it fails to handle technical jargon.
- The authors should discuss the computational efficiency of the proposed algorithms and how they scale with dataset size.
- If applicable, the authors should discuss possible limitations of their approach to address problems of privacy and fairness.
- While the authors might fear that complete honesty about limitations might be used by reviewers as grounds for rejection, a worse outcome might be that reviewers discover limitations that aren’t acknowledged in the paper. The authors should use their best judgment and recognize that individual actions in favor of transparency play an important role in developing norms that preserve the integrity of the community. Reviewers will be specifically instructed to not penalize honesty concerning limitations.

### 3. Theory assumptions and proofs

Question: For each theoretical result, does the paper provide the full set of assumptions and a complete (and correct) proof?

Answer: [NA]

Justification: The paper does not present theoretical results or proofs, focusing instead on empirical evaluations and dataset synthesis.

Guidelines:

- The answer NA means that the paper does not include theoretical results.
- All the theorems, formulas, and proofs in the paper should be numbered and cross-referenced.

- All assumptions should be clearly stated or referenced in the statement of any theorems.
- The proofs can either appear in the main paper or the supplemental material, but if they appear in the supplemental material, the authors are encouraged to provide a short proof sketch to provide intuition.
- Inversely, any informal proof provided in the core of the paper should be complemented by formal proofs provided in appendix or supplemental material.
- Theorems and Lemmas that the proof relies upon should be properly referenced.

#### 4. Experimental result reproducibility

Question: Does the paper fully disclose all the information needed to reproduce the main experimental results of the paper to the extent that it affects the main claims and/or conclusions of the paper (regardless of whether the code and data are provided or not)?

Answer: [Yes]

Justification: Section 4 details the experimental setup, including dataset splits, models, and evaluation metrics, while Section D in appendix provide further details on the synthesis pipeline and training setup, enabling reproduction of the results.

Guidelines:

- The answer NA means that the paper does not include experiments.
- If the paper includes experiments, a No answer to this question will not be perceived well by the reviewers: Making the paper reproducible is important, regardless of whether the code and data are provided or not.
- If the contribution is a dataset and/or model, the authors should describe the steps taken to make their results reproducible or verifiable.
- Depending on the contribution, reproducibility can be accomplished in various ways. For example, if the contribution is a novel architecture, describing the architecture fully might suffice, or if the contribution is a specific model and empirical evaluation, it may be necessary to either make it possible for others to replicate the model with the same dataset, or provide access to the model. In general, releasing code and data is often one good way to accomplish this, but reproducibility can also be provided via detailed instructions for how to replicate the results, access to a hosted model (e.g., in the case of a large language model), releasing of a model checkpoint, or other means that are appropriate to the research performed.
- While NeurIPS does not require releasing code, the conference does require all submissions to provide some reasonable avenue for reproducibility, which may depend on the nature of the contribution. For example
  - (a) If the contribution is primarily a new algorithm, the paper should make it clear how to reproduce that algorithm.
  - (b) If the contribution is primarily a new model architecture, the paper should describe the architecture clearly and fully.
  - (c) If the contribution is a new model (e.g., a large language model), then there should either be a way to access this model for reproducing the results or a way to reproduce the model (e.g., with an open-source dataset or instructions for how to construct the dataset).
  - (d) We recognize that reproducibility may be tricky in some cases, in which case authors are welcome to describe the particular way they provide for reproducibility. In the case of closed-source models, it may be that access to the model is limited in some way (e.g., to registered users), but it should be possible for other researchers to have some path to reproducing or verifying the results.

#### 5. Open access to data and code

Question: Does the paper provide open access to the data and code, with sufficient instructions to faithfully reproduce the main experimental results, as described in supplemental material?

Answer: [Yes]

Justification: The paper states in the abstract that source code and data are available at <https://nvbench2.github.io/>, providing open access to reproduce the experimental results.

Guidelines:

- The answer NA means that paper does not include experiments requiring code.
- Please see the NeurIPS code and data submission guidelines (<https://nips.cc/public/guides/CodeSubmissionPolicy>) for more details.
- While we encourage the release of code and data, we understand that this might not be possible, so “No” is an acceptable answer. Papers cannot be rejected simply for not including code, unless this is central to the contribution (e.g., for a new open-source benchmark).

- The instructions should contain the exact command and environment needed to run to reproduce the results. See the NeurIPS code and data submission guidelines (<https://nips.cc/public/guides/CodeSubmissionPolicy>) for more details.
- The authors should provide instructions on data access and preparation, including how to access the raw data, preprocessed data, intermediate data, and generated data, etc.
- The authors should provide scripts to reproduce all experimental results for the new proposed method and baselines. If only a subset of experiments are reproducible, they should state which ones are omitted from the script and why.
- At submission time, to preserve anonymity, the authors should release anonymized versions (if applicable).
- Providing as much information as possible in supplemental material (appended to the paper) is recommended, but including URLs to data and code is permitted.

## 6. Experimental setting/details

Question: Does the paper specify all the training and test details (e.g., data splits, hyperparameters, how they were chosen, type of optimizer, etc.) necessary to understand the results?

Answer: [Yes]

Justification: Section 4 describes the dataset splits, models, and evaluation metrics, while Appendix D provides additional details on training setup and prompt templates, sufficient to understand the results.

Guidelines:

- The answer NA means that the paper does not include experiments.
- The experimental setting should be presented in the core of the paper to a level of detail that is necessary to appreciate the results and make sense of them.
- The full details can be provided either with the code, in appendix, or as supplemental material.

## 7. Experiment statistical significance

Question: Does the paper report error bars suitably and correctly defined or other appropriate information about the statistical significance of the experiments?

Answer: [NA]

Justification: The paper reports performance metrics (e.g., Precision and Recall) in Section D, with detailed tables and figures. but does not provide error bars, confidence intervals, or statistical significance tests for the experimental results.

Guidelines:

- The answer NA means that the paper does not include experiments.
- The authors should answer "Yes" if the results are accompanied by error bars, confidence intervals, or statistical significance tests, at least for the experiments that support the main claims of the paper.
- The factors of variability that the error bars are capturing should be clearly stated (for example, train/test split, initialization, random drawing of some parameter, or overall run with given experimental conditions).
- The method for calculating the error bars should be explained (closed form formula, call to a library function, bootstrap, etc.)
- The assumptions made should be given (e.g., Normally distributed errors).
- It should be clear whether the error bar is the standard deviation or the standard error of the mean.
- It is OK to report 1-sigma error bars, but one should state it. The authors should preferably report a 2-sigma error bar than state that they have a 96% CI, if the hypothesis of Normality of errors is not verified.
- For asymmetric distributions, the authors should be careful not to show in tables or figures symmetric error bars that would yield results that are out of range (e.g. negative error rates).
- If error bars are reported in tables or plots, The authors should explain in the text how they were calculated and reference the corresponding figures or tables in the text.

## 8. Experiments compute resources

Question: For each experiment, does the paper provide sufficient information on the computer resources (type of compute workers, memory, time of execution) needed to reproduce the experiments?

Answer: [Yes]

Justification: The paper specifies the compute resources (e.g., CPU/GPU type, memory, execution time) used for the experiments in the appendix D, providing sufficient details for reproducibility.

776 Guidelines:

777 • The answer NA means that the paper does not include experiments.

778 • The paper should indicate the type of compute workers CPU or GPU, internal cluster, or cloud

779 provider, including relevant memory and storage.

780 • The paper should provide the amount of compute required for each of the individual experimental

781 runs as well as estimate the total compute.

782 • The paper should disclose whether the full research project required more compute than the

783 experiments reported in the paper (e.g., preliminary or failed experiments that didn't make it into

784 the paper).

785 **9. Code of ethics**

786 Question: Does the research conducted in the paper conform, in every respect, with the NeurIPS

787 Code of Ethics <https://neurips.cc/public/EthicsGuidelines>?

788 Answer: [Yes]

789 Justification: The research adheres to NeurIPS Code of Ethics.

790 Guidelines:

791 • The answer NA means that the authors have not reviewed the NeurIPS Code of Ethics.

792 • If the authors answer No, they should explain the special circumstances that require a deviation

793 from the Code of Ethics.

794 • The authors should make sure to preserve anonymity (e.g., if there is a special consideration due

795 to laws or regulations in their jurisdiction).

796 **10. Broader impacts**

797 Question: Does the paper discuss both potential positive societal impacts and negative societal

798 impacts of the work performed?

799 Answer: [Yes]

800 Justification: The paper discusses potential positive and negative societal impacts, such as the

801 benefits of improved visualization tools and risks of misuse for disinformation or fairness issues, in

802 Appendix G.

803 Guidelines:

804 • The answer NA means that there is no societal impact of the work performed.

805 • If the authors answer NA or No, they should explain why their work has no societal impact or

806 why the paper does not address societal impact.

807 • Examples of negative societal impacts include potential malicious or unintended uses (e.g.,

808 disinformation, generating fake profiles, surveillance), fairness considerations (e.g., deployment

809 of technologies that could make decisions that unfairly impact specific groups), privacy

810 considerations, and security considerations.

811 • The conference expects that many papers will be foundational research and not tied to particular

812 applications, let alone deployments. However, if there is a direct path to any negative applications,

813 the authors should point it out. For example, it is legitimate to point out that an improvement in

814 the quality of generative models could be used to generate deepfakes for disinformation. On the

815 other hand, it is not needed to point out that a generic algorithm for optimizing neural networks

816 could enable people to train models that generate Deepfakes faster.

817 • The authors should consider possible harms that could arise when the technology is being used

818 as intended and functioning correctly, harms that could arise when the technology is being used

819 as intended but gives incorrect results, and harms following from (intentional or unintentional)

820 misuse of the technology.

821 • If there are negative societal impacts, the authors could also discuss possible mitigation strategies

822 (e.g., gated release of models, providing defenses in addition to attacks, mechanisms for

823 monitoring misuse, mechanisms to monitor how a system learns from feedback over time,

824 improving the efficiency and accessibility of ML).

825 **11. Safeguards**

826 Question: Does the paper describe safeguards that have been put in place for responsible release of

827 data or models that have a high risk for misuse (e.g., pretrained language models, image generators,

828 or scraped datasets)?

829 Answer: [NA]

830 Justification: The paper's dataset and models do not pose high risks for misuse, as they focus on

831 Text-to-Visualization tasks without sensitive data or dual-use potential.

832 Guidelines:

833 • The answer NA means that the paper poses no such risks.

834 • Released models that have a high risk for misuse or dual-use should be released with necessary  
835 safeguards to allow for controlled use of the model, for example by requiring that users adhere to  
836 usage guidelines or restrictions to access the model or implementing safety filters.  
837 • Datasets that have been scraped from the Internet could pose safety risks. The authors should  
838 describe how they avoided releasing unsafe images.  
839 • We recognize that providing effective safeguards is challenging, and many papers do not require  
840 this, but we encourage authors to take this into account and make a best faith effort.

841 **12. Licenses for existing assets**  
842 Question: Are the creators or original owners of assets (e.g., code, data, models), used in the paper,  
843 properly credited and are the license and terms of use explicitly mentioned and properly respected?  
844 Answer: [Yes]  
845 Justification: The paper credits previous datasets (e.g., nvBench and BIRD) and implies adherence  
846 to licensing.  
847 Guidelines:  
848 • The answer NA means that the paper does not use existing assets.  
849 • The authors should cite the original paper that produced the code package or dataset.  
850 • The authors should state which version of the asset is used and, if possible, include a URL.  
851 • The name of the license (e.g., CC-BY 4.0) should be included for each asset.  
852 • For scraped data from a particular source (e.g., website), the copyright and terms of service of  
853 that source should be provided.  
854 • If assets are released, the license, copyright information, and terms of use in the package should  
855 be provided. For popular datasets, `paperswithcode.com/datasets` has curated licenses for  
856 some datasets. Their licensing guide can help determine the license of a dataset.  
857 • For existing datasets that are re-packaged, both the original license and the license of the derived  
858 asset (if it has changed) should be provided.  
859 • If this information is not available online, the authors are encouraged to reach out to the asset’s  
860 creators.

861 **13. New assets**  
862 Question: Are new assets introduced in the paper well documented and is the documentation  
863 provided alongside the assets?  
864 Answer: [Yes]  
865 Justification: The dataset and model are documented in Sections 2 and Sections 3, with additional  
866 details in Appendix C, and the open access URL (<https://nvbench2.github.io/>) likely  
867 includes further documentation.  
868 Guidelines:  
869 • The answer NA means that the paper does not release new assets.  
870 • Researchers should communicate the details of the dataset/code/model as part of their submissions  
871 via structured templates. This includes details about training, license, limitations, etc.  
872 • The paper should discuss whether and how consent was obtained from people whose asset is  
873 used.  
874 • At submission time, remember to anonymize your assets (if applicable). You can either create an  
875 anonymized URL or include an anonymized zip file.

876 **14. Crowdsourcing and research with human subjects**  
877 Question: For crowdsourcing experiments and research with human subjects, does the paper  
878 include the full text of instructions given to participants and screenshots, if applicable, as well as  
879 details about compensation (if any)?  
880 Answer: [NA]  
881 Justification: The paper does not involve crowdsourcing or human subjects, as the experiments  
882 focus on automated data synthesis and model training.  
883 Guidelines:  
884 • The answer NA means that the paper does not involve crowdsourcing nor research with human  
885 subjects.  
886 • Including this information in the supplemental material is fine, but if the main contribution of  
887 the paper involves human subjects, then as much detail as possible should be included in the  
888 main paper.  
889 • According to the NeurIPS Code of Ethics, workers involved in data collection, curation, or other  
890 labor should be paid at least the minimum wage in the country of the data collector.

891 **15. Institutional review board (IRB) approvals or equivalent for research with human subjects**

892 Question: Does the paper describe potential risks incurred by study participants, whether such  
893 risks were disclosed to the subjects, and whether Institutional Review Board (IRB) approvals (or an  
894 equivalent approval/review based on the requirements of your country or institution) were obtained?  
895 Answer: [NA]  
896 Justification: The paper does not involve human subjects, focusing on computational experiments  
897 and dataset synthesis, thus requiring no IRB approval.  
898 Guidelines:  
899 • The answer NA means that the paper does not involve crowdsourcing nor research with human  
900 subjects.  
901 • Depending on the country in which research is conducted, IRB approval (or equivalent) may be  
902 required for any human subjects research. If you obtained IRB approval, you should clearly state  
903 this in the paper.  
904 • We recognize that the procedures for this may vary significantly between institutions and locations,  
905 and we expect authors to adhere to the NeurIPS Code of Ethics and the guidelines for their  
906 institution.  
907 • For initial submissions, do not include any information that would break anonymity (if applicable),  
908 such as the institution conducting the review.

909 **16. Declaration of LLM usage**  
910 Question: Does the paper describe the usage of LLMs if it is an important, original, or non-standard  
911 component of the core methods in this research? Note that if the LLM is used only for writing,  
912 editing, or formatting purposes and does not impact the core methodology, scientific rigorousness,  
913 or originality of the research, declaration is not required.  
914 Answer: [Yes]  
915 Justification: The paper details the use of LLMs in the ambiguity-injection pipeline (Section 2.1)  
916 and experiments (Section 4), which are central to the core methodology.  
917 Guidelines:  
918 • The answer NA means that the core method development in this research does not involve LLMs  
919 as any important, original, or non-standard components.  
920 • Please refer to our LLM policy (<https://neurips.cc/Conferences/2025/LLM>) for what  
921 should or should not be described.



## Technical Appendices and Supplementary Material

- A: Detailed Related Work
- B: More Details of Synthetic Pipeline
- C: More Details of nvBench 2.0
- D: More Details of Experimental Setups
- E: More Details of Error Analysis
- F: Limitations
- G: Ethic Statement

### A Detailed Related Work

#### A.1 *Text2VIS* Benchmarks

*Text2VIS* benchmarks play a crucial role in evaluating the performance of *Text2VIS* systems [45]. As the predecessor of nvBench 2.0, nvBench 1.0 [16] is a commonly used *Text2VIS* benchmark, constructs datasets by leveraging the semantic alignment between SQL and visualization query language, which is a SQL-like specification that defines the visualization structure and details the data transformation processes. It employs template-based structures to systematically translate VQL into NL. This structured approach facilitates end-to-end model training by enhancing the clarity of both inputs and outputs [28, 46, 47, 6, 48, 49]. Building on nvBench 1.0 [16], Dial-NVBench [19] introduces multi-turn dialogues, allowing models to capture user intent through iterative interactions. VisEval [29] further refines nvBench by filtering out ambiguous, irrational, duplicated, and incorrect queries using a three-step selection process (rule-based, LLM-based, and human-based), and offers an automated evaluation framework covering validity, legality, and readability. However, all three benchmarks [16, 19, 29] remain focused on well-specified queries that map directly to a single correct visualization, without explicitly addressing ambiguity in user intent.

To explore ambiguous and under-specified query formulations, ChartGPT [30] extends nvBench by prompting GPT-3 to generate more abstract and natural utterances compared to the original ones. Similarly, while some other *Text2VIS* datasets include ambiguous queries [31, 18, 17], they do not explicitly define ambiguity types and provide a complete set of valid chart results. Beyond the realm of *Text2VIS*, ambiguity has also been explored in *Text2SQL* benchmarks, where studies have considered data selection and computation ambiguity [13, 50], but they do not address ambiguity in the visualization space. While some *Text2VIS* systems have attempted to address ambiguity by detecting it [10, 51] or inferring underspecified queries [52], they lack a benchmark for systematic evaluation.

To fill this gap, we propose nvBench 2.0, the first ambiguity-aware *Text2VIS* benchmark, which provides ambiguous user queries and supports one-to-many mappings with multiple valid visualizations. By doing so, it enables a more comprehensive evaluation of *Text2VIS* systems in real-world scenarios.

#### A.2 LLMs for Data Synthesis

Recently, the use of LLMs for data synthesis or data augmentation has become increasingly prevalent. Many studies leverage LLM-generated data for training models [32–38], as well as for evaluating the performance of other trained models [39]. In the NLP domain, researchers have utilized LLMs to generate synthetic data for tasks like text classification [40–42]. These works showcase that LLM-generated data can enhance data diversity, thereby improving model generalization and robustness. Building on this, VL2NL [15] extends LLMs to *Text2VIS* domain, generating natural language descriptions (*e.g.*, L1 and L2 captions, and user commands) from Vega-Lite specifications. Similarly, the application of LLMs for tabular data or database-related tasks has gained attraction. Common approaches for generating *Text2SQL* or table question answering datasets often involve generating TEXT queries first, followed by SQL generation [13, 50]. ScienceBenchmark [43] takes a reverse approach by starting with seed SQL queries, then generating new SQL queries from the domain schema, and translating them into natural language queries using fine-tuned LLMs. We follow this reverse construction philosophy in developing nvBench 2.0. Specifically, we begin by extracting VQL from seed charts and then use LLMs to reverse engineer the corresponding text descriptions. The advantage of this approach is that VQL clearly defines each step and the ambiguity types involved, allowing us to better capture one-to-many (TEXT, VIS) pairs.

By leveraging LLMs to generate multi-step reasoning data, the performance of models on long-chain and complex reasoning tasks can be further improved. As demonstrated by Hunter et al. [44], process supervision via multi-step reasoning significantly enhances model reliability on tasks such as mathematical problem-solving. Similarly, Step-DPO [23] shows that generating step-wise reasoning data enables models to better capture intermediate steps, resulting in improved accuracy. Following this approach, we also generate multi-step reasoning data for tasks in the *Text2VIS* domain, where each step of the reasoning process is explicitly defined, contributing to more accurate and interpretable model predictions.

## B More Details of Synthetic Pipeline

### B.1 Step 1: Ambiguity-aware VIS Tree Synthesis

Our ambiguity-aware visualization tree synthesis forms the foundation for synthesizing ambiguous *Text2VIS* data. As shown in Figure 6, this process injects ambiguities into a seed visualization.

**Transforming the Seed Visualization into a Tree Abstraction.** Given a data table  $D$  and a seed visualization  $v$  (e.g., (Figure 6-①), we first convert the  $v$ —along with its underlying query—into an Abstract Syntax Tree (AST), which we refer to as the seed visualization tree  $T$  (e.g., Figure 6-②). The grammar of AST is based on the predecessor work, nvBench [16]. This tree explicitly encodes all design decisions made in creating  $v$  and is formally defined as:

$$v \mapsto T = \{\mathbf{A} \mid \mathbf{A} = [a_1, a_2, \dots, a_t]\} \quad (2)$$

Here, each node  $a_i$  represents a construction action for a visualization component as a tuple  $(\tau, op, params)$ , where:

- $\tau \in \{\text{explicit}, \text{ambiguous}, \text{implicit}\}$  denotes the ambiguity type of the action node;
- $op$  specifies the operation (e.g., data selection, chart type selection, channel mapping, data transformation selection, etc.);
- $params$  contains the specific parameters for the operations.

#### Controlled Ambiguity Injection.

We then transform  $T$  into an ambiguity-aware tree  $T'$  through three operations:

- **Injecting ambiguous nodes** : We add nodes that represent components with multiple valid interpretations. For example, replacing “Local Gross” with an ambiguous choice between “Local Gross” and “World Gross”.
- **Adding implicit nodes** : We include nodes for components not explicitly specified but required for visualization completion. For example, adding a node for the “COLOR” encoding channel.
- **Modifying explicit nodes** : We adjust certain explicit nodes to account for potential ambiguities. For example, changing a “Mark” node initially set as “Bar” into an ambiguous choice among various mark types or requiring inference from analytic tasks.

By applying these steps, the resulting ambiguity-aware tree  $T'$  captures the full range of possible interpretations for the seed visualization. For example, as shown in Figure 6-③, this tree contains some new nodes such as:

**A1** : (ambiguous, data\_column, {field:[Local\_Gross, World\_Gross]})

**A2** : (explicit, task, {value:[Trend]})

**A3** : (implicit, data\_value, {value:[Comedy, Action]})

#### Ambiguity Metadata Generation for Ambiguity Injection.

To enable precise ambiguity injection in data tables, we propose a systematic metadata generation process that integrates structured knowledge bases with large language models (LLMs). This process

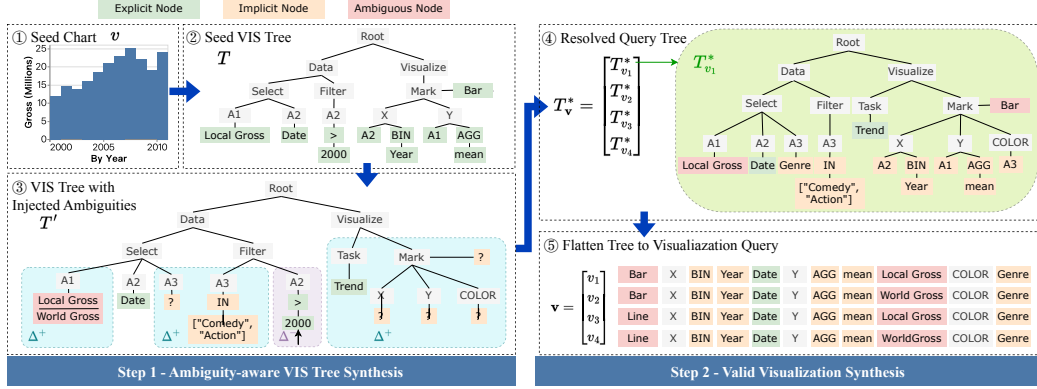


Figure 6: Injecting ambiguities into a seed visualization.

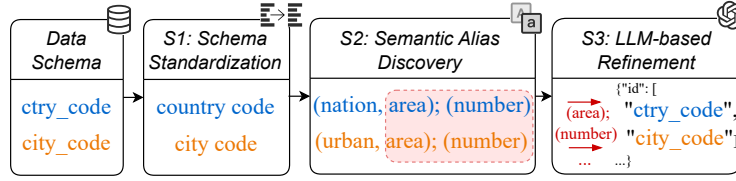


Figure 7: Ambiguity metadata generation workflow.

identifies and categorizes potential semantic ambiguities in table schemas, producing metadata that guides the construction of ambiguity-aware visualization trees. Each node in the visualization tree  $T'$  is labeled as ambiguous, implicit, or explicit based on the metadata, ensuring visualizations reflect multiple valid query interpretations. The process comprises three key stages: schema standardization, semantic alias discovery, and LLM-based refinement.

**Stage 1: Schema Standardization:** The first step involves standardizing the original data schema by refining or expanding column names. Abbreviated or domain-specific terms are transformed into more descriptive, conventional labels. For example, a column labeled `ctry_code` is standardized to `country code`. Such standardization forms a clearer basis for subsequent ambiguity analysis.

**Stage 2: Semantic Alias Discovery:** After standardizing the schema, we leverage ConceptNet [53] to identify potential semantic aliases for each column name. ConceptNet’s multilingual knowledge graph provides synonyms, hypernyms, and other semantically related terms, helping detect conceptual overlaps. We flag pairs of columns with similar meanings or concept overlap as potential sources of ambiguity. For example, `country code` and `city code` may both have meanings related to `number`, introducing possible confusion in user queries.

**Stage 3: LLM-Based Refinement:** We refine the flagged ambiguous column pairs using GPT-4o-mini with a chain-of-thought (CoT) prompting strategy. The model analyzes the original column names, their standardized forms (Stage 1), and the ConceptNet-derived aliases and ambiguity flags (Stage 2). It then generates a final, validated set of ambiguous pairs, which is formatted into a JSON metadata file. For example, as shown in Figure 7, one of the identified ambiguous pairs is `ctry_code` and `city_code` due to their similar word aliases. This process supports ambiguity-aware visualization generation and step-wise reasoning.

By combining these stages, we generate the necessary metadata to guide the construction of ambiguity-aware visualization trees, ensuring that each node is accurately marked as explicit, ambiguous, or implicit, thus enabling the synthesis of visualizations that reflect multiple valid interpretations of the query.

## B.2 Step 2: Valid Visualization Synthesis

Once we have an ambiguity-aware visualization tree  $T'$ , the next stage is to generate a set of valid visualizations  $\mathbf{v} = \{v_1, v_2, \dots, v_k\}$ . Each visualization  $v_i$  represents one possible resolution of the ambiguities present in  $T'$  (see Figure 6-3). In this step, we define a resolution function  $\mathcal{R}$

to systematically clarifies ambiguous and implicit nodes, transforming  $T'$  into a set of resolved trees  $\{T_{v_1}^*, \dots, T_{v_k}^*\}$  (see Figure 6-④). Each resolved tree  $T_{v_i}^*$  is then “flattened” into a concrete visualization query  $v_i$  (see Figure 6-⑤).

**Task Description.** Recap that a partially ambiguous visualization tree  $T'$  may contain:

- *Ambiguous nodes*: Multiple valid interpretations (e.g., which column to use for “gross”).
- *Implicit nodes*: Necessary but unspecified details (e.g., binning a date field by year).
- *Explicit nodes*: Directly specified components (e.g., “bar” mark).

To produce valid visualizations, these ambiguous and implicit nodes must be resolved in a manner consistent with established visualization grammar rules (e.g., requiring temporal fields to be binned). Formally, we define:

$$\mathcal{R}(T') \rightarrow \{T_{v_1}^*, T_{v_2}^*, \dots, T_{v_k}^*\} \quad (3)$$

where each  $T_{v_i}^*$  is a resolved tree that has no remaining ambiguity or unspecified details. The flattening process then converts each  $T_{v_i}^*$  into a finalized visualization specification  $v_i$ . This yields the complete set of valid visualizations:  $\mathbf{v} = \{v_1, v_2, \dots, v_k\}$ .

In the following sections, we describe how an Answer Set Programming (ASP) solver [22] is used to implement the resolution function  $\mathcal{R}$  while ensuring that each resolved visualization adheres to the necessary grammar constraints.

**ASP Solver Objective.** ASP is a declarative constraint programming paradigm well-suited for knowledge representation and reasoning [22, 54, 55]. Encoding the ambiguity resolution process and grammar rules as logical constraints has the following benefits:

- *Completeness*: The solver can enumerate all stable models (i.e., all possible ways to resolve ambiguous or implicit nodes) that satisfy the visualization grammar.
- *Correctness*: Only solutions that meet mandatory constraints (e.g., “temporal fields must be binned”) are considered valid.
- *Diversity*: Each output corresponds to a distinct interpretation of the query, ensuring coverage of all plausible visualizations.

The number of resulting visualizations,  $k = |\mathbf{v}|$ , represents the **ambiguity level**—how many distinct interpretations the solver deems valid for the given  $T'$ . After obtaining these solutions, we can filter or select a subset based on a target ambiguity level  $k$ , ensuring that each retained visualization differs from the others.

**ASP Syntax Overview.** ASP is built on a logical foundation with several key syntactic constructs [22]. The fundamental unit in ASP is a rule of the form: `Head :- Body.`, which states that the head is true if all literals in the body are satisfied. For example, the rule: `light_on :- power_available, switch_flipped.` expresses that the light will be on if both power is available and the switch is flipped.

Some special cases include:

- *Facts*: Rules without a body represent unconditional truths. For example, `power_available.` asserts that power is available.
- *Integrity Constraints*: Rules without a head prohibit certain combinations of conditions. For example, the constraint: `:- not power_available, light_on.` ensures that the light cannot be on when power is not available.

An ASP program consists of a collection of rules, facts, and constraints that collectively define a search space. The ASP solver then computes all stable models (i.e., answer sets) that satisfy these conditions. Each stable model represents a valid system state or, in our context, a valid resolution of the ambiguous visualization tree.

For example, consider a simple lighting system modeled with:

- *Rule*: `light_on :- power_available, switch_flipped.`

1092 • *Fact:* `power_available.`, `switch_flipped.`

1093 Given these statements, the ASP solver determines the unique answer set containing `light_on`, as all  
1094 conditions in the rule body are satisfied. If we instead had `not switch_flipped.`, the solver would  
1095 exclude `light_on` from the answer set.

1096 By exhaustively computing all stable models that meet the specified constraints, the ASP solver  
1097 identifies all valid visualization configurations implied by our ambiguity-aware visualization tree. This  
1098 systematic resolution is key to generating a complete set of valid visualizations from an ambiguous  
1099 query.

1100 **ASP Rules for Resolving Ambiguity-aware Visualization Tree.** We formalize the visualization  
1101 design space using ASP by converting each node in the ambiguity-aware visualization tree  $T'$  into  
1102 ASP rules. As defined in Section B.1, each node in the visualization tree is represented as a tuple  
1103 (*type, operation, parameters*), which is mapped into ASP entities, (e.g., like `entity(E, _, _)`).  
1104 and their associated attributes (e.g., like `attribute(A, _, _)`).

1105 *Rules for Explicit Nodes.* Nodes that directly specify a visualization component are encoded as entities  
1106 with fully defined attributes. For example, a node indicating a specific mark selection, such as a bar  
1107 chart, is encoded in ASP as:

1108 • `entity(mark, parent_id, mark_id).`  
1109 • `attribute((mark, type), mark_id, bar).`

1110 These rules explicitly assert that the mark type is “bar”.

1111 *Rules for Ambiguous Nodes.* Nodes that allow multiple valid interpretations are encoded using ASP  
1112 choice rules. For example, if an encoding node can correspond to either “temp\_max” or “temp\_min”,  
1113 we encode this ambiguity as follows:

1114 • `1 { attribute((encoding, field), e_id, temp_max); attribute((encoding, field),`  
1115 `e_id, temp_min) }. ensures at least one option should be selected.`  
1116 • An accompanying integrity constraint ensures that only one of the two options is selected: `:- at`  
1117 `tribute((encoding, field), e_id, temp_max), attribute((encoding, field), e_id,`  
1118 `temp_min).`

1119 This formulation forces the solver to choose exactly one interpretation for each ambiguous node.

1120 *Rules for Implicit Nodes.* Implicit nodes represent necessary components that are not explicitly  
1121 specified in the query. These nodes are encoded using placeholder attributes to indicate that the value  
1122 is not determined. For example, a mark node with an unspecified chart type is represented as:

1123 • `entity(mark, parent_id, mark_id).`  
1124 • `attribute((mark, type), mark_id, _).`

1125 This indicates the mark exists, but its type is undetermined.

1126 To capture the complete visualization design space, we also encode comprehensive design knowledge  
1127 as ASP rules [56, 54, 55], which fall into three categories:

1128 *Definition Rules for Visualization.* Declarative statements that establish foundational visualization  
1129 elements, such as available chart types or encoding channels. For example, `domain((mark,`  
1130 `type), (point; bar; pie)).` defines that the mark type for a chart can be point, bar, or pie.

1131 *Hard Constraints for Visualization.* Mandatory conditions that any valid visualization must sat-  
1132 isfy. For example, the constraint `violation(no_encodings) :- entity(mark, _, M), not`  
1133 `entity(encoding, M, _).` ensures that every mark has at least one visual encoding channel.

1134 *Choice Rules for Visualization.* Rules that govern the selection among multiple options when construct-  
1135 ing a visualization. For example `0 { attribute((encoding, field), E, N): domain((field,`  
1136 `name), N) } 1 :- entity(encoding, _, E).` ensures that each encoding is associated with at most  
1137 one field.

1138 **Applying ASP Solver to Reason Valid Visualization.** By encoding the ambiguity-aware visualization  
 1139 tree structure and design principles as ASP rules, we create a powerful mechanism to resolve  
 1140 ambiguities. The ASP solver explores all possible resolutions for ambiguous nodes, ensuring that only  
 1141 solutions adhering to the visualization grammar constraints are accepted. This results in a diverse set  
 1142 of valid visualizations, with variations in chart type, encoding mappings, and data transformations,  
 1143 while staying true to the original ambiguous query.

### 1144 B.3 Step 3: Ambiguous Text Query Synthesis

1145 As shown in Figure 2 (c), this step runs in parallel with the valid visualization synthesis described in  
 1146 Section B.2. Building on the ambiguity-aware visualization tree  $T'$ , this step aims to synthesize a  
 1147 corresponding ambiguous natural language query  $q$ .

1148 **Task Description.** Given the input ambiguous visualization tree  $T' = \{\mathbf{A} \mid \mathbf{A} = [a_1, a_2, \dots, a_h]\}$ ,  
 1149 the corresponding natural language query  $q$  is generated using the mapping function  $\mathcal{M}$ :

$$Q = \mathcal{M}(T') = [\mathcal{M}(a_1), \mathcal{M}(a_2), \dots, \mathcal{M}(a_h)] \quad (4)$$

1150 where the tuple of each visualization construction action  $a_i$  in  $T'$  is mapped to a corresponding natural  
 1151 language expression  $\mathcal{M}(a_i)$ .

1152 For a given  $T'$ , its corresponding  $q$  must satisfy the following conditions to ensure correctness:

- 1153 • *Completeness:* Ensure that all actions in the original  $T'$  are covered in the generated  $q$ :

$$\forall a_i \in T', \exists \mathcal{M}(a_i) \in Q \quad (5)$$

- 1154 • *Type Preservation:*  $q$  must preserve the ambiguity types of the original action nodes:

$$\tau(\mathcal{M}(a_i)) = \tau(a_i), \quad \forall a_i \in T' \quad (6)$$

1155 where  $\tau(a_i)$  is the ambiguity type of action node  $a_i$ .

- 1156 • *Boundedness:*  $q$  should not introduce any actions outside of  $T'$ :

$$\forall \text{expression } e \in Q, \exists a_i \in T' : e = \mathcal{M}(a_i) \quad (7)$$

1157 **Solution Overview.** We leverage an LLM-based **Text Query Generator** to integrate the ambigu-  
 1158 ties introduced in  $T'$  into a single and coherent query  $q$ , ensuring that the generated query faithfully  
 1159 reflects all the intended ambiguous components. Finally, an **Text Query Verifier** is employed  
 1160 to validate that  $q$  accurately captures the ambiguity without introducing any extraneous semantics.  
 1161 This two-step process—generation followed by verification—ensures that the final query remains  
 1162 consistent with the design decisions encoded in  $T'$  while meeting the criteria of completeness, type  
 1163 preservation, and boundedness.

1164 **Text Query Diversity in Generation.** NLV Corpus [17] defines several distinct categories of natural  
 1165 language utterances—question, command, query, and other. Since “query” somewhat overlaps with  
 1166 other styles, we focus on three main types: question, command, and caption, each representing a  
 1167 distinct style of user input:

- 1168 • *Question:* Typically begins with a question word (e.g., “What”, “How much”, “How many”, etc.).
- 1169 • *Command:* Usually an imperative sentence (e.g., “Show a bar chart of sales by region”).
- 1170 • *Caption:* Includes non-standard phrases, incomplete sentences, or informal text conveying user  
 1171 intent, often brief (e.g., “SUM (Sales) vs Date” or “budget over time”).

1172 To ensure diversity of the generated queries, we provide specific Text Query styles and corresponding  
 1173 example queries as input to the language model. These examples are randomly sampled from a large  
 1174 corpus to ensure variability.

1175 **Text Query Generator.** To systematically align the structured visualization tree with diverse natural  
 1176 language expressions, we define explicit input-output mappings. The input to the LLM (GPT-4o-mini-  
 1177 turbo) delivers essential context, including data schema, sample data, action sequences, and style  
 1178 requirements. This aims to ensure that the output text query: maintains linguistic grounding for all



Table 4: Chart types, visual channels, and analytic tasks with compatible data types:  $C$ =Categorical,  $Q$ =Quantitative,  $T$ =Temporal,  $\emptyset$ =N/A.

Chart Type	Encoding Channel $x y color size theta$	Analytic Task
Bar	$\{C, Q, T\} Q C \emptyset \emptyset$	Trend, Distribution
Line	$\{C, Q, T\} Q C \emptyset \emptyset$	Trend, Distribution
Pie	$\emptyset \emptyset C \emptyset Q$	Distribution
Scatter	$Q Q C Q \emptyset$	Correlation
Heatmap	$\{C, Q, T\} \{C, Q\} Q \emptyset \emptyset$	Correlation
Boxplot	$\{C\} Q C \emptyset \emptyset$	Distribution

actions (5), preserves ambiguity types during translation (6), and avoids introducing any extraneous semantics (7). The complete prompt format is in Table 7.

**Text Query Verifier.** As indicated by recent studies [57, 58], LLMs outputs still require verification, particularly concerning *boundedness* (7). The verification can be performed by LLMs or human evaluators. In our preliminary experiments, we found that LLM-based verification is sufficient to achieve an accuracy of 99%. Thus, we designed the following prompt for LLM verification as shown in Figure 9

If  $L_1$  fully covers all nodes in  $T$  while  $L_2$  remains empty, the  $q$  is considered valid and added to the dataset. Otherwise,  $q$  is classified as invalid, and it would be regenerated by the **Text Query Generator**. This approach checks for *completeness* (5), *type preservation* (6), and *boundedness* (7). If the verification fails, the system can regenerate the query or suggest corrections.

#### B.4 Step 4: Ambiguity-resolved Reasoning Path

Based on the previous discussion, we have reformulated the *Text2VIS* problem from a direct mapping  $q \rightarrow \mathbf{v} = \{v_1, \dots, v_k\}$  to a structured process  $q \rightarrow T' \rightarrow T_{\mathbf{v}}^* \rightarrow \mathbf{v}$ . To mimic human-like reasoning workflow for ambiguity resolution, we propose decomposing the ambiguity-aware visualization generation process into a sequential reasoning path with five distinct steps, as illustrated in Figure 1:

$$q \xrightarrow{\phi_1} S_1 \xrightarrow{\phi_2} S_2 \xrightarrow{\phi_3} S_3 \xrightarrow{\phi_4} S_4 \xrightarrow{\phi_5} \mathbf{v} \quad (8)$$

where each  $\phi_i$  represents a reasoning function and each  $S_i$  represents the intermediate state after applying the corresponding reasoning function.

**Step-①: Data Selection Reasoning.** The first step parses the natural language query  $q$  into data components from the data table:

$$\phi_1(q) \rightarrow S_1 = \{a_1^c, a_2^c, \dots, a_m^c\} \quad (9)$$

where each  $a_i^c$  represents a data component selection action, including column selection, value selection, and filter condition specification. The outcomes of this step correspond to the SELECT and FILTER nodes in the visualization tree (see Figure 6).

**Step-②: Chart Type Reasoning.** The second step determines appropriate visualization mark types based on the analytic task:

$$\phi_2(S_1, q) \rightarrow S_2 = S_1 \cup \{a_1^v, a_2^v, \dots, a_n^v\} \quad (10)$$

where each  $a_i^v$  represents a visualization design action, including analytic task identification and chart type selection. As shown in Table 4, existing visualization design principles [59–61] can establish a mapping relationship between tasks and chart types [59, 60, 62]. When the text query  $q$  does not

1207 explicitly specify a chart type, the identified task can guide inference, though this may introduce  
 1208 ambiguity as multiple chart types may be suitable for a given task. In addition, certain tasks influence  
 1209 encoding channel selection in the next step.

1210 **Step-③: Channel Mapping Reasoning.** The third step establishes the mappings between data  
 1211 components and encoding channels:

$$\phi_3(S_2) \rightarrow S_3 = S_2 \cup \{a_1^m, a_2^m, \dots, a_p^m\} \quad (11)$$

1212 where each  $a_i^m$  represents a channel mapping action, such as assigning data columns to encoding  
 1213 channels like X, Y, color, or size. This step ensures that data columns are mapped appropriately,  
 1214 aligning with visualization design principles, where some mapping relationships are shown in Table 4.

1215 **Step-④: Data Transformation Reasoning.** The fourth step specifies necessary data transformations  
 1216 based on the channel mappings:

$$\phi_4(S_3) \rightarrow S_4 = S_3 \cup \{a_1^t, a_2^t, \dots, a_r^t\} \quad (12)$$

1217 where each  $a_i^t$  represents a data transformation action, including aggregation, binning, sorting, and  
 1218 filtering operations, these transformations prepare the data to be properly visualized according to the  
 1219 selected chart type and channel mappings.

1220 **Step-⑤: Visualization Synthesis Reasoning.** The final step is to integrate all reasoning steps to  
 1221 generate a set of valid visualizations:

$$\phi_5(S_4) \rightarrow \mathbf{v} = \{v_1, v_2, \dots, v_k\} \quad (13)$$

1222 where each  $v_i$  represents a valid visualization specification. This process can produce multiple valid  
 1223 visualizations that address different aspects of the ambiguity in the original query (see Figure 1).

1224 The four reasoning steps (Step-① to Step-④) outlined in the ambiguity-resolved reasoning path are  
 1225 not strictly bound by a fixed sequence and can be executed in any order, provided all steps are  
 1226 completed before the final visualization synthesis (Step-⑤). This flexibility arises because each step  
 1227 addresses a distinct aspect of the visualization process—data selection, chart type reasoning, channel  
 1228 mapping, and data transformation—and their interdependencies are managed through the shared  
 1229 ambiguity-aware visualization tree  $T'$ . The exact order may vary depending on the text query; for  
 1230 example, if the query lacks any clues about the chart type, chart type reasoning may occur last, after  
 1231 all selected data and possible channel mappings have been considered.

1232 This structured reasoning process systematically addresses ambiguity at each step while adhering  
 1233 to visualization design principles. Each step builds upon prior decisions, progressively refining the  
 1234 visualization specifications to account for multiple valid interpretations of the original text query.

1235 Formally, the complete reasoning path can be expressed as the composition of the step-wise reasoning  
 1236 functions:

$$\mathcal{F}(q, D) = (\phi_5 \circ \phi_4 \circ \phi_3 \circ \phi_2 \circ \phi_1)(q, D) \rightarrow \mathbf{v} \quad (14)$$

1237 This decomposition simplifies the ambiguity-aware *Text2VIS* process, breaking down complex  
 1238 reasoning into steps that better align with LLMs' strengths in natural language understanding and  
 1239 generation. Techniques like chain-of-thought prompting or step-wise direct preference optimization  
 1240 (step-DPO) [23, 44] can further improve LLM performance.

1241 Finally, as shown in Figure 2 (d), the LLM-based step-wise reasoning generator takes the text query  
 1242  $q$ , the generated unambiguous visualization  $v$ , and the ambiguous visualization tree  $T'$  as input. It  
 1243 then performs reverse reasoning for each step (14), generating text-based reasoning descriptions.  
 1244 For example, when resolving chart type ambiguity in Figure 1, the LLM reasons, "Since this query  
 1245 requests a trend analysis over time, either bar charts or line charts would be appropriate, as both  
 1246 effectively represent temporal patterns in the data" for Step-②. The complete prompt format is in  
 1247 Table 9.

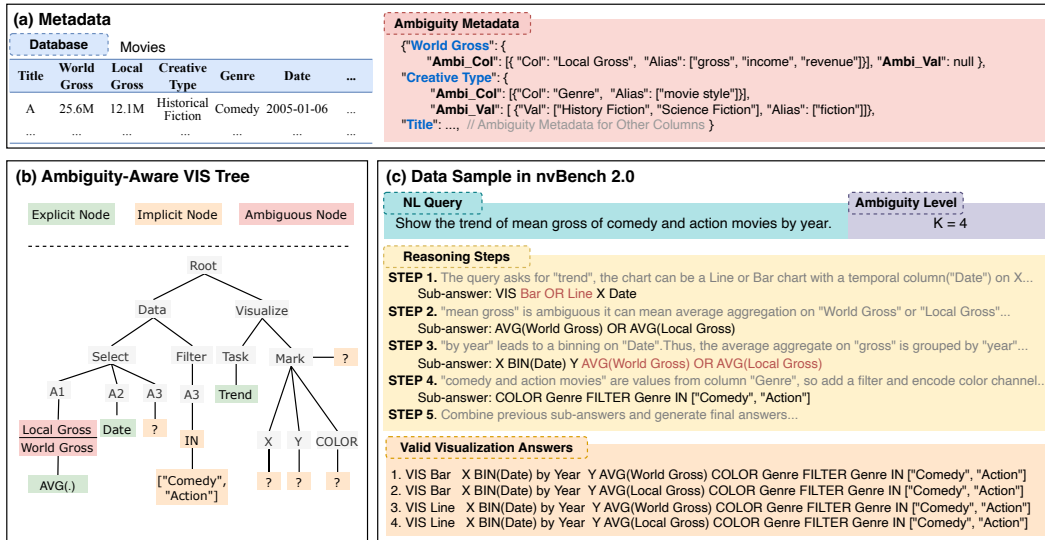


Figure 8: An example in nvBench 2.0.

## C More Details of nvBench 2.0

### C.1 Detailed Example in nvBench 2.0

Figure 8 illustrates an example sample in the nvBench 2.0, showcasing how the data is stored and the information it contains. Figure 8 (a) Presents the data schema for the "Movies" database, incorporating ambiguity metadata that highlights potential ambiguities, such as column aliases (e.g., "World Gross" and "Local Gross" both linked to "gross") and value aliases (e.g., "History Fiction" and "Science Fiction" both linked to "fiction").

Figure 8 (b) Displays the Ambiguity-Aware VIS Tree, depicting the hierarchical structure of ambiguous user intent, with explicit nodes shown in green, implicit nodes in yellow, and ambiguous nodes in red, revealing the underlying ambiguous intents for the data sample in (c).

Figure 8 (c) represents a data sample within nvBench 2.0, beginning with the text query "Show the trend of the mean gross of comedy and action movies by year" and an ambiguity level of  $K = 4$ , demonstrating the number of gold answers available for this query. The sample includes reasoning steps, each with 1-2 sentences of logical reasoning and a sub-answer, culminating in the four gold answers.

### C.2 Detailed Statistics of nvBench 2.0

**Data Tables.** Figure 9 (a.1) shows that most tables in our dataset have 2–5 columns, with fewer than 50 tables having more than 8 columns. As Figure 9 (a.2) illustrates (log scale), row counts range widely, from 10–1000 rows for many tables to outliers exceeding 10,000 rows. This variety ensures that nvBench 2.0 tests system performance across both small and large datasets.

**Ambiguity Types and Levels.** An important contribution of nvBench 2.0 is the systematic introduction of controlled ambiguity levels. Figure 9 (b.1) categorizes ambiguity by type: Data Transformation (DT) ambiguities are most prevalent ( $\sim 3,500$  examples), followed by Channel Mapping (CM) ambiguities ( $\sim 1,500$  examples), with Data Selection (DS) and Chart Type Selection (CT) ambiguities represented by approximately 900 and 400 examples, respectively. As shown in Figure 9 (b.2), the majority of samples (approximately 3,500) have an ambiguity level of 2, indicating that two valid visualizations exist. The dataset also contains a substantial number of samples with ambiguity levels of 3, 4, and 5, enabling a thorough evaluation of systems under increasingly complex ambiguous scenarios. Figure 9 (c.2) and (d.2) further illustrates the relationship between ambiguity levels and two factors: chart types (c.2) and NL styles (d.2), showing comprehensive data coverage.

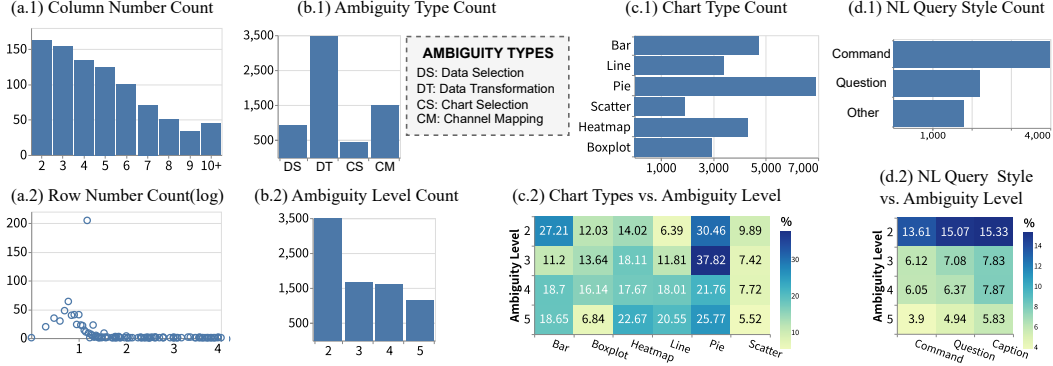


Figure 9: Detailed Statistics of nvBench 2.0.

Table 5: Distribution of natural language styles across chart types and word count statistics

NL Style	Count by Chart Type						Total	Word Count		
	Bar	Line	Pie	Scatter	Boxplot	Heatmap		Avg.	Max	Min
Command	1368	922	1922	608	1319	894	2338	14.20	60	6
Question	1570	1084	2299	679	1403	966	2636	14.04	39	5
Caption	1779	1363	2651	581	1589	1079	2904	14.00	65	5
Total	4717	3369	6872	1868	4311	2939	7878	14.07	65	5

**Visualizations.** Figure 9 (c.1) shows the distribution of chart types in nvBench 2.0. Pie charts are the most common, with around 6,000 examples, followed by bar charts ( $\sim 4,000$ ) and heatmaps ( $\sim 3,500$ ). Additionally, line charts ( $\sim 2,800$ ), boxplots ( $\sim 2,000$ ), and scatter plots ( $\sim 1,500$ ) are also well-represented, ensuring that the benchmark covers all major visualization types. This distribution reflects common visualization practices, where pie and bar charts are widely used for categorical comparisons, while the other types serve specialized analytical needs.

**Text Queries.** Figure 9 (d.1) presents the natural language query distribution. Command-based queries (e.g., “Show me the sales by region”) are most frequent ( $\sim 4,000$ ). Question-based queries (e.g., “What are the sales trends?”) and caption-like statements (e.g., “SUM (Sales) vs Date”) appear in about 2,000 and 1,800 instances, respectively. Table 5 provides a detailed breakdown of NL styles across different chart types, along with word count statistics. Commands, questions, and captions are distributed across various chart types, with pie charts receiving the highest number of queries (6,872). The average word count remains consistent ( $\sim 14$  words), with captions exhibiting the longest maximum length (65 words). This distribution highlights the dataset’s diversity in both linguistic structure and visualization needs, ensuring that nvBench 2.0 can effectively evaluate systems’ capabilities to handle diverse user interactions.

## D More Details of Experimental setups

**Methods.** We evaluate the performance on ambiguous *Text2VIS* tasks using both prompting-based and fine-tuning-based methods with our nvBench 2.0. The primary goal is to assess the model’s ability to generate diverse and semantically accurate visualizations in response to ambiguous TEXT queries.

*Prompting-based Methods.* We evaluate two prompting strategies with GPT-4o-mini, GPT-4o and Qwen2.5-7B-Instruct model:

- **Direct Prompting:** See Table 10 for complete prompt structure. The model receives structured *Data Information* and an *Text Query* as input, generating 1-5 distinct charts to cover possible interpretations of ambiguous queries.

- **Step Prompting:** See Table 11 for complete prompt structure. Models are guided to “think step-by-step”, explicitly articulating their reasoning process before generating visualizations. Models using this approach are denoted with a “-Step” suffix.

#### 1307 Supervised Fine-tuning Method.

- **Qwen2.5-7B-SFT:** We performed supervised fine-tuning on the Qwen2.5-7B-Instruct model using the training set, enabling direct generation of multiple Vega-Lite definitions without step-wise reasoning. Training involved three epochs with a global batch size of 16, a learning rate of  $2e-5$ , the AdamW optimizer, and a cosine learning rate scheduler with a 0.1 warmup ratio.

#### 1312 Preference Learning Method.

- **Step-Text2Vis:** We designed Step-Text2Vis to handle the ambiguity in *Text2VIS* through step-wise reasoning as detailed in Section 3. After the initial supervised fine-tuning of Qwen-2.5-7B-Instruct, we constructed a preference dataset from the nvBench 2.0 development set for Step-DPO training. This process used one epoch with a global batch size of 4, a linearly decaying learning rate from  $2e-6$ , and the AdamW optimizer.

1318 **Evaluation Metrics.** Detailed explanation for evaluation metrics:

- **Precision@K (P@K):** Assesses recommendation accuracy by calculating the proportion of valid visualizations among the top-K outputs. Higher P@K indicates more trustworthy recommendations, with fewer incorrect visualizations shown to users.
- **Recall@K (R@K):** Quantifies how completely the model covers the golden visualization space by measuring the proportion of valid visualizations successfully identified. This captures the model’s ability to represent multiple valid interpretations for ambiguous queries.
- **F1@K:** Provides a balanced measure that combines precision and recall through their harmonic mean. This comprehensive metric rewards systems that achieve both high coverage of the golden answer space and high accuracy in their recommendations.

1328 For all experiments, we report these metrics at  $K \in \{1, 3, 5\}$  to evaluate performance across different  
1329 recommendation set sizes.

## 1330 **E More Details of Error Analysis**

### 1331 **E.1 Qualitative Error Analysis in Reasoning Paths.**

1332 Figure 10 outlines frequent errors in the stepwise reasoning process for ambiguous Text2VIS tasks  
1333 across four key steps:

- At the Data Selection step, errors frequently arise when models overgeneralize column references, selecting irrelevant or overly broad sets of data that do not align with the query’s intent.
- During the Data Transformation step, mistakes often occur due to misinterpretation of aggregation requirements, such as applying incorrect operations like counting rows instead of summing specific values.
- At the Chart Selection step, errors commonly stem from choosing inappropriate chart types that fail to match the analytical task or data characteristics, leading to ineffective visualizations.
- In the Channel Mapping step, issues frequently emerge from incorrect assignments of data to visualization channels, such as mapping a temporal field to a color channel instead of an axis, resulting in misleading representations.

1344 The stepwise reasoning step information provided in these examples is valuable for further ambiguous  
1345 *Text2VIS* system development, as it offers insights into common reasoning pitfalls, enabling the  
1346 design of more robust models that can learn from and correct these errors to improve accuracy and  
1347 interpretability in handling ambiguous queries.

Example 1: Error at Data Selection Step																			
Text Query	<div>Database: Stores</div> <table><tr><th>workshop_id</th><th>store_id</th><th>store_name</th><th>email_address</th><th>...</th></tr><tr><td>1</td><td>A01</td><td>Store A</td><td>a@xx.com</td><td>...</td></tr><tr><td>2</td><td>B01</td><td>Store B</td><td>b@xx.com</td><td>...</td></tr></table>				workshop_id	store_id	store_name	email_address	...	1	A01	Store A	a@xx.com	...	2	B01	Store B	b@xx.com	...
workshop_id	store_id	store_name	email_address	...															
1	A01	Store A	a@xx.com	...															
2	B01	Store B	b@xx.com	...															
"The distribution of ids shown in a pie chart."																			
Bad Reasoning Step	<div>Reasoning:</div> <p>The query mentions "distribution of ids" and a "pie chart." "Ids" likely refers to any ID-like column, so I'll select workshop_group_id, address_id, store_name, and store_email_address.</p> <div>Sub-Answer:</div> <p>SELECT [workshop_group_id, address_id, store_name, store_email_address].</p> <div>Problem:</div> <p>Overgeneralizes "ids" to include non-ID columns, leading to incorrect answers.</p>																		
Good Reasoning Step	<div>Reasoning:</div> <p>The query mentions "distribution of ids" and a "pie chart." "Ids" could refer to workshop_group_id or address_id, not store_name or store_email_address.</p> <div>Sub-Answer:</div> <p>SELECT [workshop_group_id, address_id].</p>																		
Example 2: Error at Data Transformation Step																			
Text Query	<div>Database: Player</div> <table><tr><th>player</th><th>team</th><th>game_played</th><th>season</th><th>...</th></tr><tr><td>Alice</td><td>Team A</td><td>25</td><td>2024</td><td>...</td></tr><tr><td>Bob</td><td>Team B</td><td>30</td><td>2024</td><td>...</td></tr></table>				player	team	game_played	season	...	Alice	Team A	25	2024	...	Bob	Team B	30	2024	...
player	team	game_played	season	...															
Alice	Team A	25	2024	...															
Bob	Team B	30	2024	...															
"Show the distribution of games played by team in a bar chart."																			
Bad Reasoning Step	<div>Reasoning:</div> <p>The query asks for "distribution of games played by team." I'll aggregate by counting rows for each Team to show distribution.</p> <div>Sub-Answer:</div> <p>SELECT COUNT(*) GROUP BY team</p> <div>Problem:</div> <p>Incorrectly applies a count of rows, ignoring that game_played already represents game counts, leading to player counts per team.</p>																		
Good Reasoning Step	<div>Reasoning:</div> <p>The query requests "distribution of games played by team." Game_Played is already a count, so I'll aggregate it (sum or average) for each Team.</p> <div>Sub-Answer:</div> <p>SELECT SUM(game_played) GROUP BY team</p>																		
Example 3: Error at Chart Selection Step																			
Text Query	<div>Database: Product</div> <table><tr><th>category</th><th>sales</th><th>region</th><th>date</th><th>...</th></tr><tr><td>X</td><td>5M</td><td>North</td><td>2024-01-15</td><td>...</td></tr><tr><td>Y</td><td>7.5M</td><td>South</td><td>2024-02-20</td><td>...</td></tr></table>				category	sales	region	date	...	X	5M	North	2024-01-15	...	Y	7.5M	South	2024-02-20	...
category	sales	region	date	...															
X	5M	North	2024-01-15	...															
Y	7.5M	South	2024-02-20	...															
"Distribution of total sales in 2024 by product category."																			
Bad Reasoning Step	<div>Reasoning:</div> <p>The query mentions "distribution" of total sales by product category . Pie and bar charts work, and a boxplot might show distribution.</p> <div>Sub-Answer:</div> <p>VIS [Bar, Pie, Boxplot].</p> <div>Problem:</div> <p>Although boxplot is good for distribution of multiple values within categories, it is unsuitable for single values per department,</p>																		
Good Reasoning Step	<div>Reasoning:</div> <p>The query indicates "distribution" of total sales by product category with one value per category. Pie and bar charts are valid, but not boxplot.</p> <div>Sub-Answer:</div> <p>VIS [Bar, Pie].</p>																		
Example 4: Error at Channel Mapping Step																			
Text Query	<div>Database: Product</div> <table><tr><th>category</th><th>sales</th><th>region</th><th>date</th><th>...</th></tr><tr><td>X</td><td>5M</td><td>North</td><td>2024-01-15</td><td>...</td></tr><tr><td>Y</td><td>7.5M</td><td>South</td><td>2024-02-20</td><td>...</td></tr></table>				category	sales	region	date	...	X	5M	North	2024-01-15	...	Y	7.5M	South	2024-02-20	...
category	sales	region	date	...															
X	5M	North	2024-01-15	...															
Y	7.5M	South	2024-02-20	...															
"Visualize sales and region data over time in a bar chart."																			
Bad Reasoning Step	<div>Reasoning:</div> <p>The query mentions "sales" and "region" over time. I'll map Sales to Y, Region to X, and Date to color.</p> <div>Sub-Answer:</div> <p>X region, Y sales, COLOR Date</p> <div>Problem:</div> <p>Although temporal column "Date" can be mapped to COLOR in a scatterplot, it should be mapped to X in a bar chart.</p>																		
Good Reasoning Step	<div>Reasoning:</div> <p>The query specifies "sales" and "region" over time. Sales to Y, Date to X, and Region to color.</p> <div>Sub-Answer:</div> <p>X date, Y sales, COLOR region</p>																		

Figure 10: Examples of Stepwise Reasoning Errors in the nvBench 2.0 dataset, highlighting common pitfalls in the Text-to-Visualization process.



Table 6: Licenses List for Assets Used

Asset	Usage	License
GPT-4o [63]	Baselines and query verification	Custom License
GPT-4o-mini	Baselines, metadata generation, query synthesis	Custom License
Qwen2.5-7B [64]	Baselines and model fine-tuning	Apache-2.0
nvBench Dataset [16]	Source for data tables and seed visualizations	MIT
BIRD Dataset [21]	Source for additional data tables	CC BY-SA 4.0
ConceptNet [53]	Semantic alias discovery in ambiguity metadata	CC BY-SA 4.0
ASP Solver (Clingo) [22]	Visualization query resolution	MIT

## F Limitations

While nvBench 2.0 introduces significant advancements in ambiguity-aware Text2VIS benchmarking, several limitations remain that present opportunities for future research:

**Limited Coverage of Visualization-Adjacent Tasks:** Although our benchmark focuses on Text2VIS ambiguity resolution, it does not extend to related domains such as Text2SQL. The step-wise reasoning approach could potentially be adapted to handle SQL generation with ambiguous queries, particularly since visualization and database queries share similar data operations. Future work could explore the integration of both Text2VIS and Text2SQL ambiguity resolution within a unified framework.

**Restricted Chart Types and Components:** Though nvBench 2.0 includes six chart types (bar, line, pie, scatter, heatmap, and boxplot), it does not cover the full spectrum of visualization techniques. Advanced chart types like treemaps, network diagrams, geographic maps, and multi-view coordinated visualizations are not included. Additionally, the benchmark lacks support for more sophisticated chart components such as error bars, trend lines, annotations, interactive elements, and customizable legends that are often crucial for comprehensive data storytelling.

**Limited Integration with Statistical Analysis:** The current benchmark treats visualization as the primary goal rather than integrating it with deeper statistical analysis intents. Users often request visualizations to support specific analytical objectives (hypothesis testing, correlation analysis, outlier detection, clustering) that require a tighter coupling between visualization and statistical computation. Future work could expand the benchmark to include cases where visualization serves as a component within broader analytical workflows.

**Absence of Conversational Context:** nvBench 2.0 evaluates standalone queries without considering the conversational context in which they might appear. In real-world scenarios, visualization requests often occur within multi-turn dialogues where context from previous exchanges influences interpretation. The benchmark does not account for these contextual dependencies, limiting its ability to evaluate systems in realistic interactive settings where ambiguity resolution might span multiple conversational turns.

## G Ethic Statement

This paper introduces nvBench 2.0, a novel benchmark for ambiguous Text-to-Visualization tasks, and evaluates the capabilities of LLMs in resolving visualization ambiguity. Our work is not intended to provoke anxiety, but rather to gain a better understanding of how LLMs can be leveraged to interpret ambiguous natural language queries for data visualization. This study aims to foster discussions on how visualization systems can better accommodate the inherent ambiguity in human requests, and how humans can more effectively utilize LLM-powered visualization tools.

In developing nvBench 2.0, we have ensured that the dataset does not contain sensitive or personally identifiable information. The data tables used in our benchmark are derived from public datasets (nvBench [20] and BIRD [21]) and have been carefully reviewed to exclude potentially harmful or private content.

In our experimental evaluations involving human reviewers for query verification, participants received appropriate compensation and ensured adequate rest periods between review sessions. We rigorously

Table 7: Prompt Structure for Ambiguous Text Query Synthesis

Prompt Structure for Ambiguous Text Query Synthesis	
<b>### Task Description:</b>	
You are an intelligent assistant. You will create three text queries (command, question, and caption) based on a given data schema and action list. Each query must incorporate all information from the action list without introducing extra elements.	
<b>### Process (4 steps):</b>	
# Step 1: Interpret Visualization Type. <i>e.g.</i> , ...	
# Step 2: Rephrase Data Columns. <i>e.g.</i> , ...	
# Step 3: Rephrase Data Transformations. <i>e.g.</i> , ...	
# Step 4: Rephrase Filter Conditions. <i>e.g.</i> , ...	
<b>### Final Answer Construction:</b>	
Combine the rephrased elements from steps 1-4 to create three text queries:	
1. Command-style: Direct instruction ( <i>e.g.</i> , "Plot the total sales by month for products priced over \$50")	
2. Question-style: Inquiry format ( <i>e.g.</i> , "What was the average rating for movies released during 2020?")	
3. Caption-style: Declarative format ( <i>e.g.</i> , "Distribution of customer count by region in a pie chart.")	
<b>### Input</b>	
Database: {basename}	
Data Columns: {data_schema}	
Data Value Examples: {data_value_example}	
Ambiguous Column Pairs: {ambiguous_pairs}	
Action List: {action_list}	

1387 protect participants' personal information, ensuring that their information remains confidential and is  
 1388 not disclosed in this document or the GitHub repository.

1389 Our source code and data are under GPL-3 license, and we follow the licenses of assets used in this  
 1390 paper, as listed in Table 6.

Table 8: Prompt Structure for Text Query Verification

Prompt Structure for Text Query Verification
<p><b>### Task Description:</b></p> <p>You are a smart assistant. Your job is to check if a text query for a Text-to-Visualization (Text2VIS) task is valid. The query must match all parts of the provided visualization tree (T) and follow three rules:</p> <ol style="list-style-type: none"> <li>1. <b>Completeness:</b> The query must include all actions and elements from the visualization tree, such as data selections, transformations, chart types, and channel mappings.</li> <li>2. <b>Type Preservation:</b> The query must keep the same ambiguity types (e.g., Data Transformation, Channel Mapping, Data Selection, Chart Type Selection) as defined in the visualization tree.</li> <li>3. <b>Boundedness:</b> The query must not add extra information or elements not in the visualization tree.</li> </ol> <p>You will get the data schema, action list, visualization tree (T), and the text query (q). Verify if the query meets all three rules. If the query is invalid, explain what is missing or extra to help fix it.</p>
<p><b>### Input:</b></p> <p># <b>Database:</b> [baseline]</p> <p># <b>Data Schema:</b> {data_schema}</p> <p># <b>Data Value Examples:</b> {data_value_example}</p> <p># <b>Visualization Tree (T):</b> {vis_tree}</p> <p># <b>Synthesized Text Query (q):</b> [text_query]</p>
<p><b>### Output:</b></p> <p># <b>Validity:</b> [Valid/Invalid]</p> <p># <b>Completeness:</b> [Met/Not Met] - Confirm if the query includes all actions and elements from the visualization tree (T).</p> <p># <b>Type Preservation:</b> [Met/Not Met] - Confirm if the query preserves the ambiguity types as defined in the visualization tree.</p> <p># <b>Boundedness:</b> [Met/Not Met] - Confirm if the query avoids adding extra information not in the visualization tree.</p> <p># <b>Feedback (if Invalid):</b> Explain what makes the query invalid, including missing elements or extra information, to guide fixing or regenerating the query.</p>

Table 9: Prompt Structure for Step-wise Reasoning Synthesis

Prompt Structure for Step-wise Reasoning Synthesis
<b>### Task Description:</b> You are a good data visualization expert. Given an ambiguous/incomplete Text Query with Data Schema, and the step-by-step answer recommending visualization charts corresponding to the ambiguous/incomplete Text Query. Then, you need to fill in the reasoning process for each step.
<b>### Instructions:</b> <b># Step 1: Data Selection.</b> Select data columns and data filters mentioned in the Text Query. If the Text Query is ambiguous and can be mapped to multiple columns, use a list to indicate all columns. <b># Step 2: Data Transformation.</b> Select data transformation (operation : parameter) = (aggregate : [sum, mean, count]; bin : base; sort:[ascending, descending]) mentioned in the Text Query. <b># Step 3: Chart type Selection.</b> Select all valid chart types for visualization based on Text Query and data selected. If chart type indicated in the Text Query, select from chart mark=(bar, line, arc, point, rect, boxplot). Else if no chart type mentioned, but specific analysis task mentioned in the Text Query, inference chart type by (task:chart)=(trend:[bar,line]; distribution:[bar,arc,line,boxplot]... Also consider if the chart type can visualize selected data. <b># Step 4: Selected Column-Channel Mapping.</b> Map selected data columns to encoding channels = (x, y, color, size). You should consider basic channel mapping feasibility. Answer with all valid chart-channel-column mapping solutions. <b># Step 5: Visualization Synthesis.</b> Based on previous steps, synthesis the final visualizations.
<b>### Input:</b> Database: {basename} Data Columns: {data_schema} Data Value Examples:{data_value_example} Text Query: {text_query}
<b>### Output</b> # Step 1: <reasoning>...</reasoning> <answer> ... <answer> # (Step 2-4) # Step 5: <answer> [ VIS 1, VIS 2, ..., VIS k ] <answer>

Table 10: Prompt Structure for Basic Experiments

Prompt Structure for Basic Experiments
<b>### Task Description:</b> You are a good data visualization expert. Given an ambiguous/incomplete Natural Language Query and a Data Table, please recommend 1 to 5 different charts corresponding for the ambiguous/incomplete NL Query. Please strictly follow the output format.
<b>### Example:</b> <b># Input:</b> Database: {basename} Data Columns: {data_schema} Data Value Examples: {data_value_example} Query: {text_query} <b># Output:</b> <answer> [ VIS 1, VIS 2, ..., VIS k ] </answer>

Table 11: Prompt Structure for Stepwise Reasoning Experiments

Prompt Structure for Stepwise Reasoning Experiments
<p><b>### Task Description:</b>            You are a good data visualization expert. Given an ambiguous/incomplete Natural Language Query and a Data Table, please recommend 1 to 5 different charts corresponding for the ambiguous/incomplete NL Query.            Please think step by step and strictly follow the output format.</p>
<p><b>### Example:</b>  <b># Input:</b>            Database: {basename}            Data Columns: {data_schema}            Data Value Examples: {data_value_example}            Query: {text_query}  <b>### Output:</b>            # Step 1: &lt;reasoning&gt;...&lt;/reasoning&gt; &lt;answer&gt; ... &lt;/answer&gt;            # (Step 2-4)            # Step 5: &lt;answer&gt; [ VIS 1, VIS 2, ..., VIS k ] &lt;/answer&gt;</p>