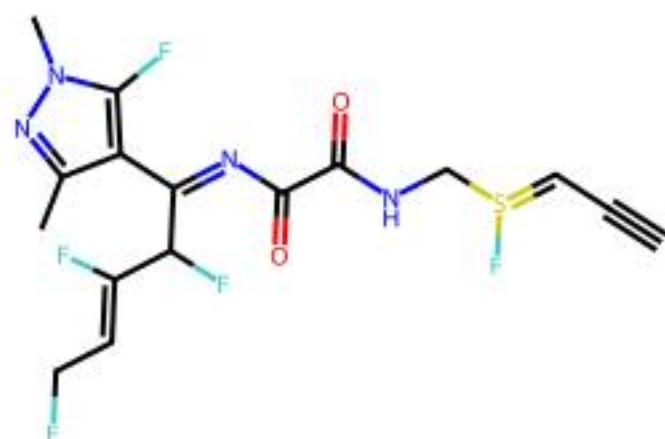
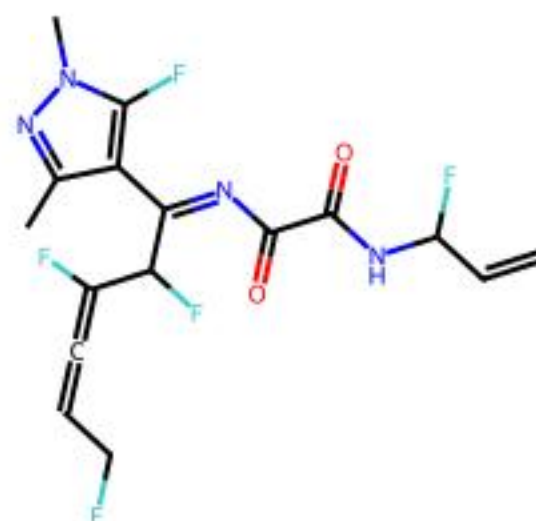


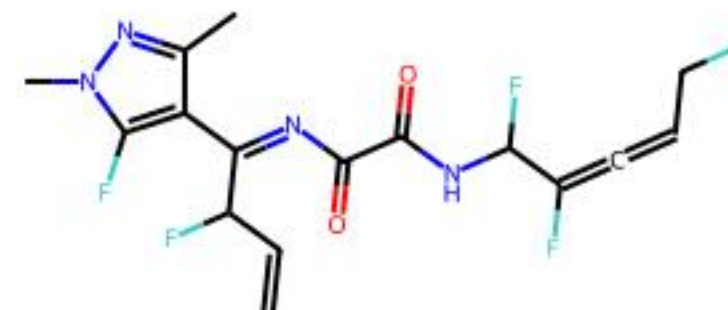
Target
CC1=CN(C2=CN=C(N=C2C1)N3CCN(CC3)C(=O)C4CC4)C



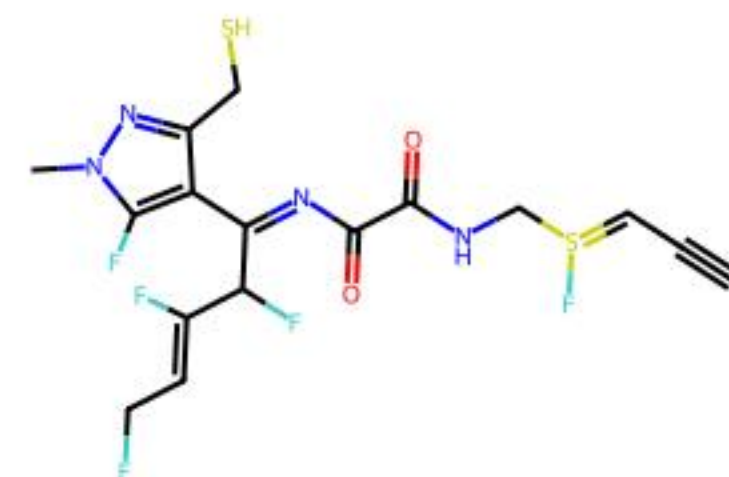
Reward: 0.76
C#CC=S(F)CNC(=O)C(=O)N=C(c1c(C)nn(C)c1F)C(F)C(F)=CCF



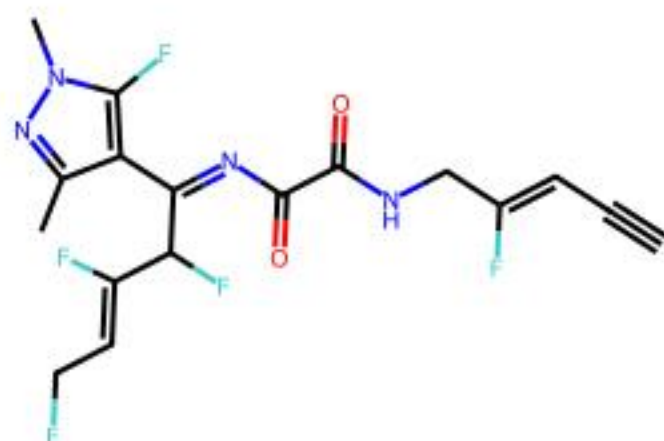
Reward: 0.76
C=CC(F)NC(=O)C(=O)N=C(c1c(C)nn(C)c1F)C(F)C(F)=C=CCF



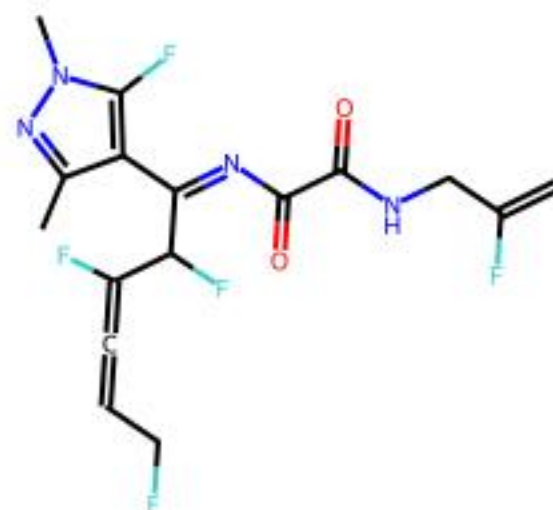
Reward: 0.76
C=CC(F)C(=NC(=O)C(=O)NC(F)C(F)=C=CCF)c1c(C)nn(C)c1F



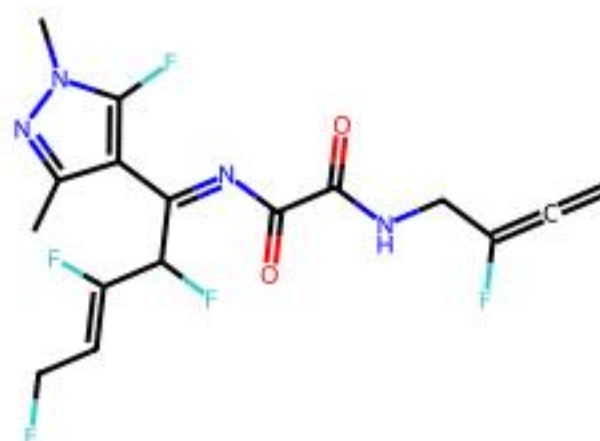
Reward: 0.74
C#CC=S(F)CNC(=O)C(=O)N=C(c1c(CS)nn(C)c1F)C(F)C(F)=CCF



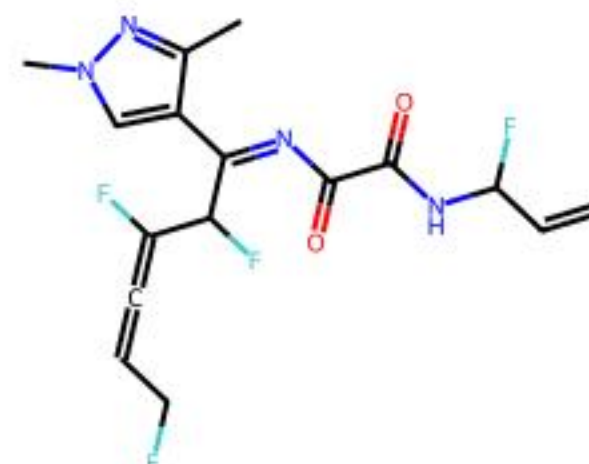
Reward: 0.74
C#CC=C(F)CNC(=O)C(=O)N=C(c1c(C)nn(C)c1F)C(F)C(F)=CCF



Reward: 0.74
C=C(F)CNC(=O)C(=O)N=C(c1c(C)nn(C)c1F)C(F)C(F)=C=CCF



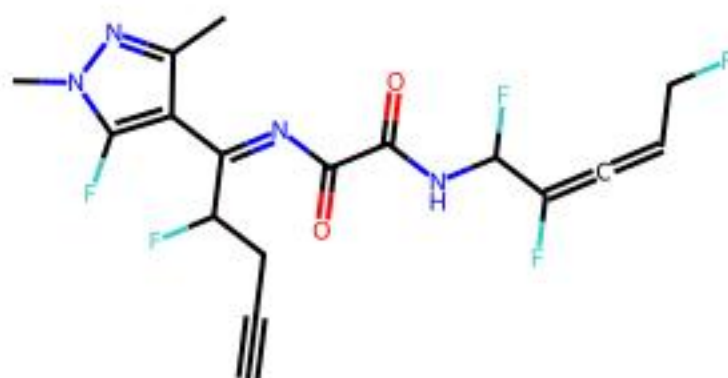
Reward: 0.74
C=C=C(F)CNC(=O)C(=O)N=C(c1c(C)nn(C)c1F)C(F)C(F)=CCF



Reward: 0.74
C=CC(F)NC(=O)C(=O)N=C(c1cn(C)nc1C)C(F)C(F)=C=CCF



Reward: 0.74
C=CC(F)C(=NC(=O)C(=O)NC(F)C(F)=C=CCF)c1cn(C)nc1C



Reward: 0.73
C#CCC(F)C(=NC(=O)C(=O)NC(F)C(F)=C=CCF)c1c(C)nn(C)c1F