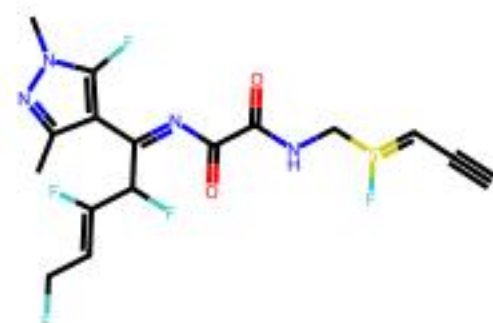


Target

CC1=CN(C2=CN=C(N=C2C1)N3CCN(CC3)C(=O)C4CC4)C



Reward: 0.76

C#CC=S(F)CNC(=O)C(=O)N=C(c1c(C)nn(C)c1F)C(F)C(F)=CCF



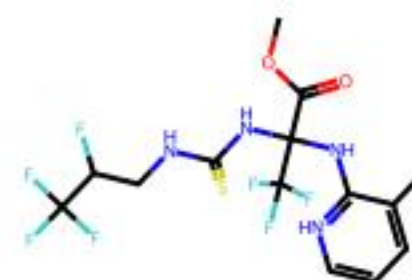
Reward: 0.71

C=C=C(F)C(=NC(=O)C(=O)NC(F)C(F)=C=CCF)c1cn(C)nc1C



Reward: 0.68

CN=C(S)C(=NC(=O)C(=O)C#Cc1c(C)nn(C)c1F)C(F)C(=CCF)CF



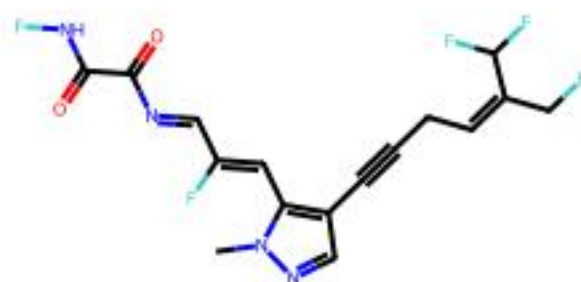
Reward: 0.64

COC(=O)C(NC(=S)NCC(F)C(F)(F)F)(Nc1[nH+]cccc1C)C(F)(F)F



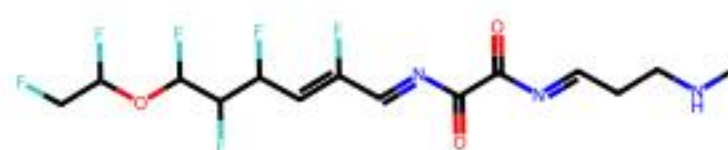
Reward: 0.62

COS(=S)C(Nc1cnn2ccccc12)(N(C=O)CC(O)C(F)(F)F)C(F)(F)F



Reward: 0.59

Cn1ncc(C#CCC=C(CF)C(F)F)c1C=C(F)C=NC(=O)C(=O)NF



Reward: 0.59

CNCCC=NC(=O)C(=O)N=CC(F)=CC(F)C(F)C(F)OC(F)CF



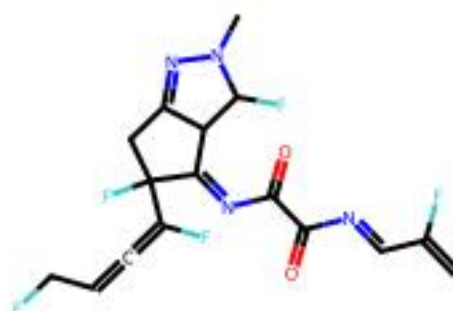
Reward: 0.54

CCOc1[nH+]cccc1[N-]C(=S)NC(Cc1nccc[nH+]1)C(F)(F)F



Reward: 0.53

O=C(Cc1ccccc1Cn1cncn1)Nc1cnn(CC(F)F)c1



Reward: 0.50

C=C(F)C=NC(=O)C(=O)N=C1C2C(=NN(C)C2F)CC1(F)C(F)=C=CCF