

## A ADDITIONAL RESULTS

## A.1 OVERSMOOTHING IN DROPEdge AND DROPMESSAGE

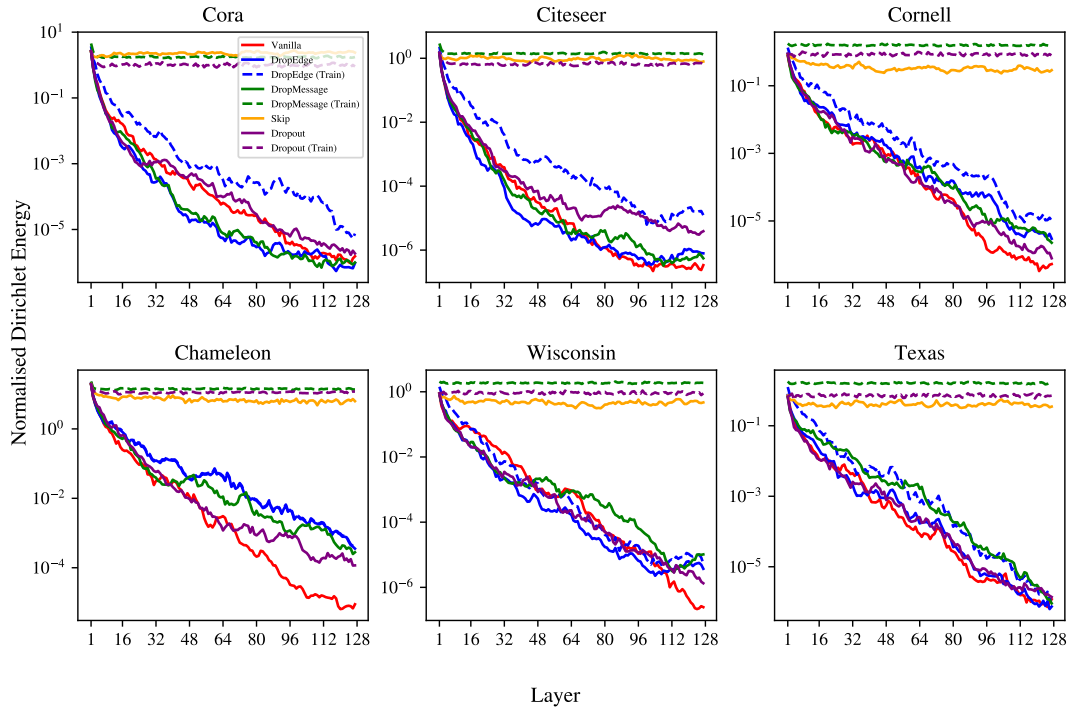


Figure 4: Full oversmoothing comparison using normalized Dirichlet energy.

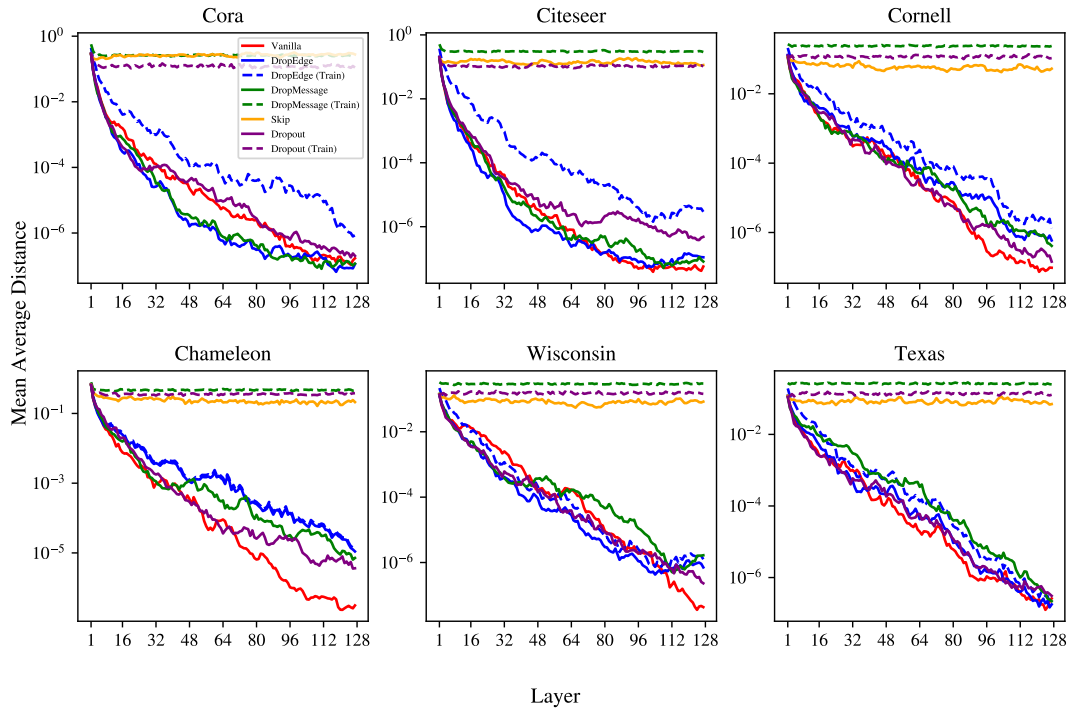


Figure 5: Full oversmoothing comparison using mean average distance.

A.2 LEARN2DROP OVERSMOOTHING

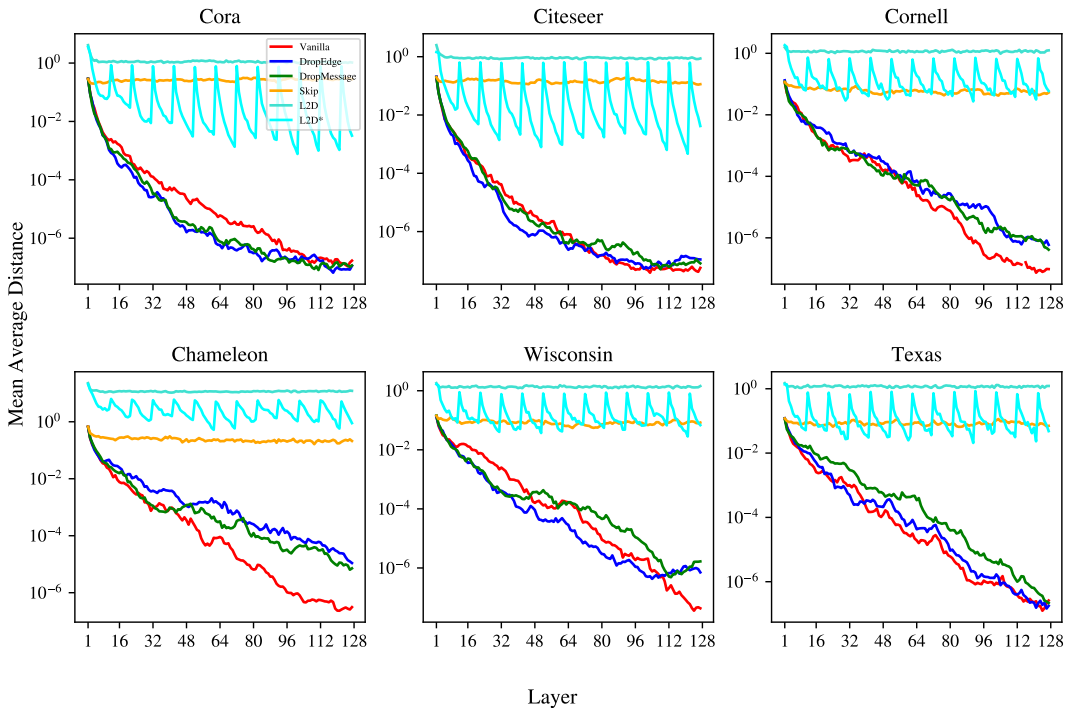


Figure 6: Oversmoothing comparison across six node classification datasets, using MAD.