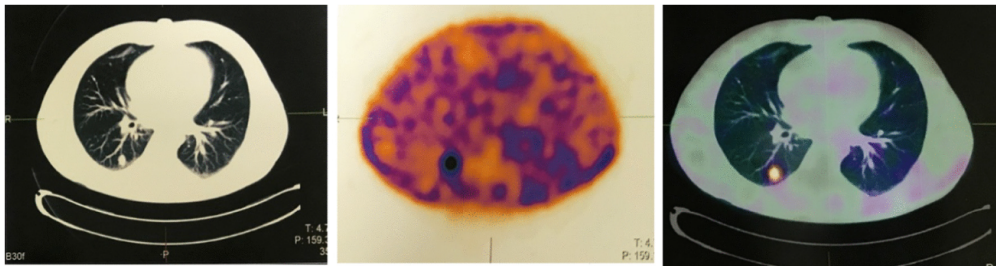


Qualitative examples of medical visual question answering task

Input Prompt

A 25-year-old Iranian man presented with symptoms and signs of Cushing’s syndrome (weight gain, proximal muscle weakness, abdominal purplish striae, hypertension, diabetes mellitus, and fragility fractures in thoracic and lumbar spines due to osteoporosis; Z score-5. The whole-body CT scan was unremarkable. Bilateral adrenalectomy was performed. Four year later, follow-up chest CT scan revealed a 17 × 11 mm mass in the posterior basal segment of the right lung.

What is the abnormality in the posterior aspect of the inferior third of the right lung highly suggestive of? <image-1>



<image-1>

RadFM Prediction

The abnormality is highly suggestive of a **primary lung neoplasm**.

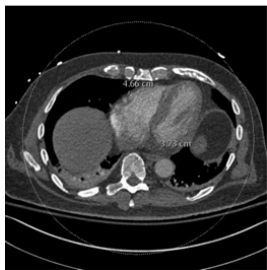
Ground Truth

The abnormality is highly suggestive of **an ectopic ACTH-producing tumor**.

Input Prompt

The postoperative laboratory results were notable for hemoglobin of 7.0 U. CT pulmonary angiography demonstrated a nearly occlusive thrombus in the left pulmonary artery (LPA). Radiology indicated that it most likely represented tumor embolism, with additional bilateral segmental and distal subsegmental emboli.

What was noted about the right ventricle? <image-1>



<image-1>

RadFM Prediction

It was noted that the right ventricle was **dilated**.

Ground Truth

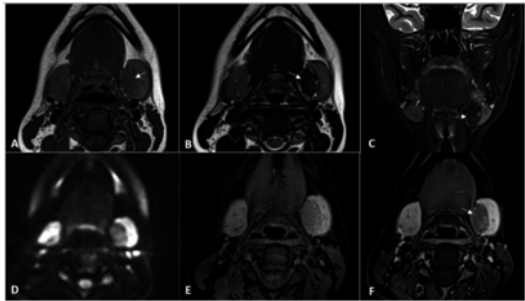
Right ventricular **dilation** was noted.

Input Prompt

A 19-year-old female reported to radiology for evaluation of palpable mass in the submandibular region on the left side. The lesion had few cystic foci within and had increased vascularity on color Doppler. It was separate from, but compressing the adjacent submandibular gland.

Magnetic Resonance Imaging (MRI) of the neck was performed for the characterisation of the lesion.

<image-1>Where was the lesion found on the MRI?’



<image-1>

RadFM Prediction

The lesion was found in the **submandibular region on the left side**.

Ground Truth

The lesion was found in the **left submandibular region**.