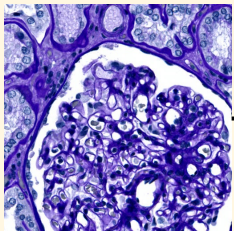
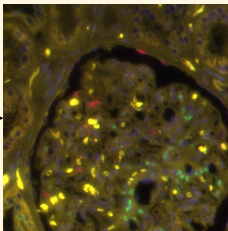


Molecular-empowered Lay Annotation

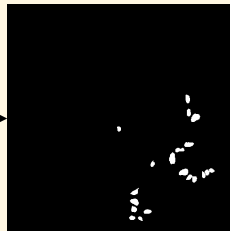
Original Image



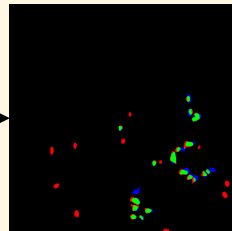
IF Image



Lay Annotation

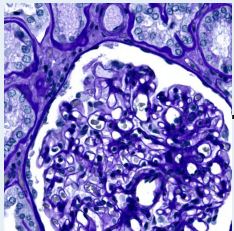


Accuracy

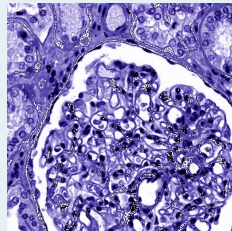
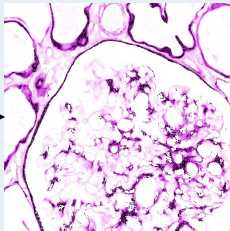


Reasoning-Guided Noise Injection

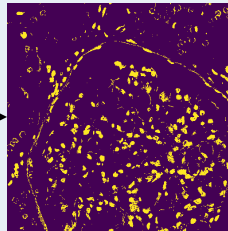
Original Image



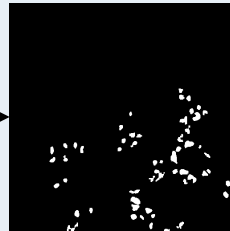
Color deconvolution



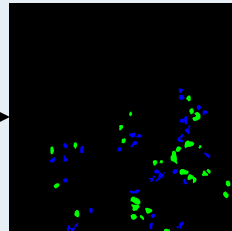
PAS channel intensity



Adding noise

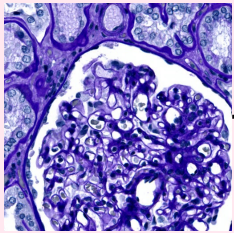


Accuracy

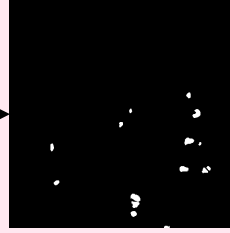


Generating Masks with Missing Contours

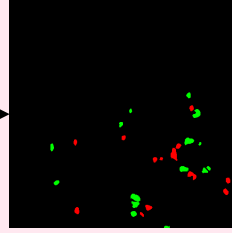
Original Image



Removing cells



Accuracy



TP FP FN