
Supplementary Material of “A Dataset of Relighted 3D Interacting Hands”

Gyeongsik Moon
mks0601@meta.com

Shunsuke Saito
shunsukesaito@meta.com

Weipeng Xu
xuweipeng@meta.com

Rohan Joshi
rohanjoshi@meta.com

Julia Buffalini
jbuffalini@meta.com

Harley Bellan
harleybellan@meta.com

Nicholas Rosen
nicholasrosen@meta.com

Jesse Richardson
jesserichardson@meta.com

Mallorie Mize
malloriemize@meta.com

Philippe de Bree
phillippedebree@meta.com

Tomas Simon
tsimon@meta.com

Bo Peng
bopeng@meta.com

Shubham Garg
ssgarg@meta.com

Kevyn McPhail
kmcphail@meta.com

Takaaki Shiratori
tshiratori@meta.com

Meta Reality Labs Research

In this supplementary material, we provide more experiments, discussions, and other details that could not be included in the main text due to the lack of pages. The contents are summarized below:

1. Pose examples of Re:InterHand
2. Privacy

A Pose examples of Re:InterHand

Fig. **A** and **B** show pose examples of our Re:InterHand dataset.

B Privacy

All data captures are done after obtaining signatures from subjects with Meta’s consent form. Our Re:InterHand dataset does not have personally identifiable information or offensive content.

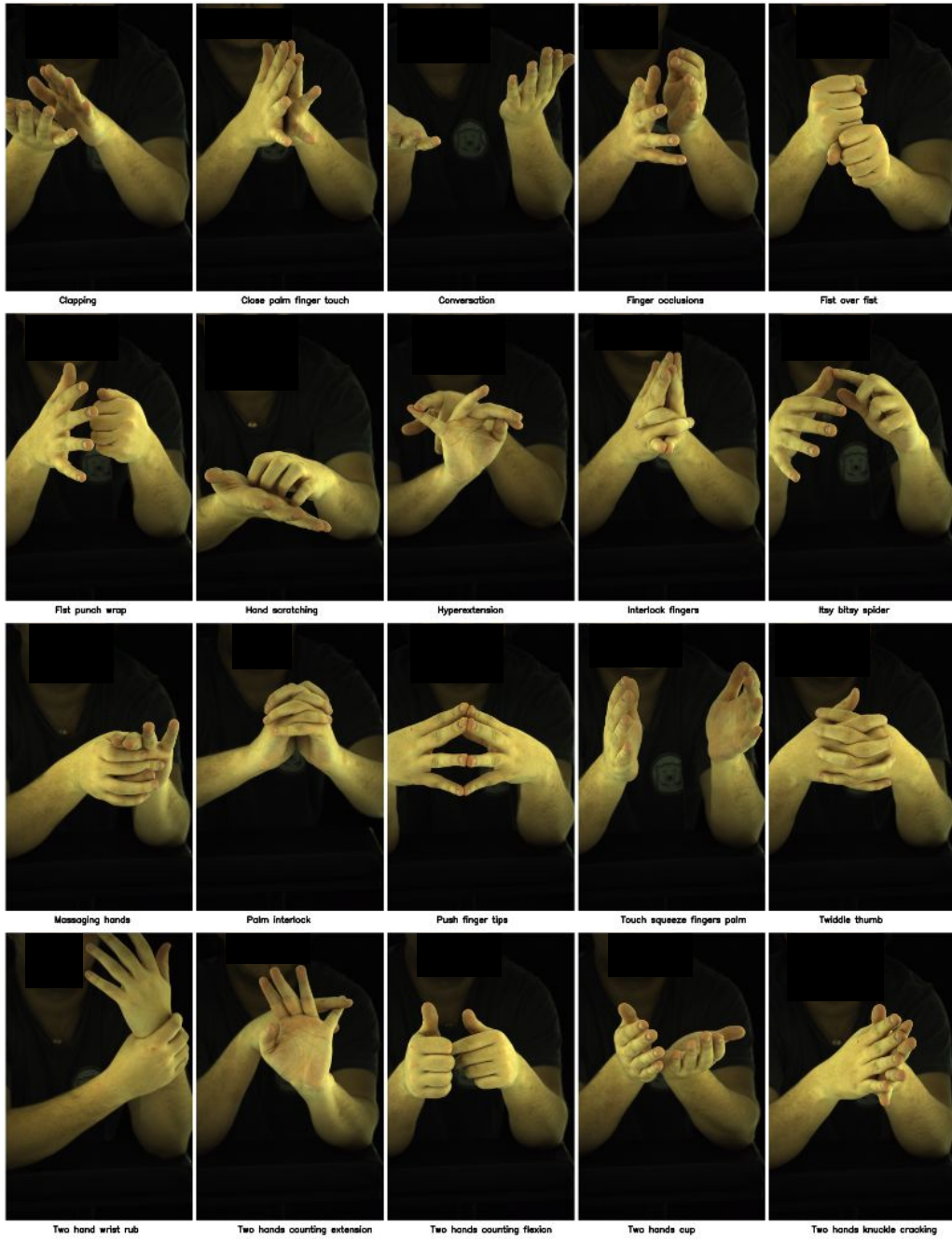


Figure A: Pose examples of our Re:InterHand dataset. Identifiable information is removed.

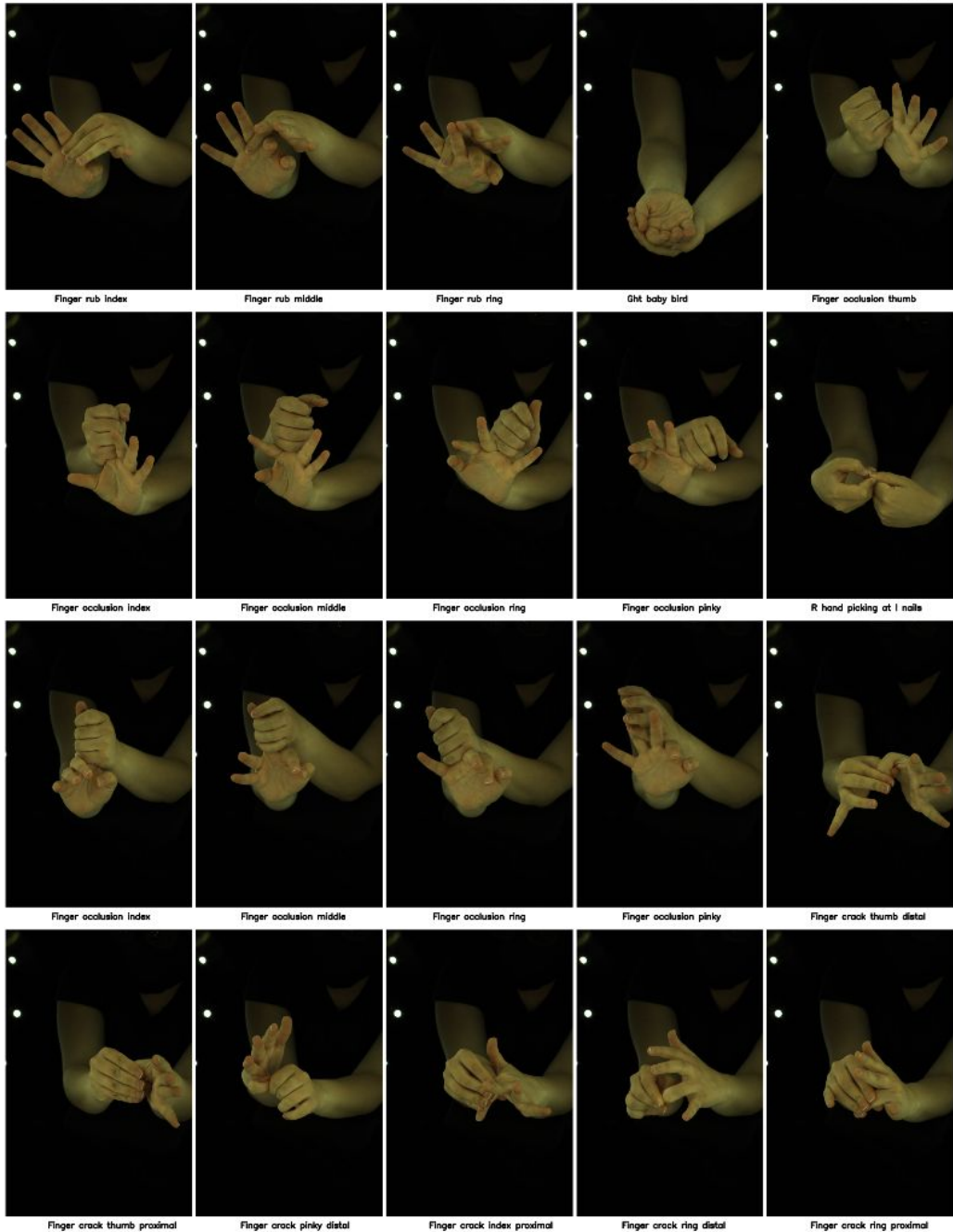


Figure B: Pose examples of our Re:InterHand dataset. Identifiable information is removed.