

Case Study

A. Knowledge (Both Qwen2.5-VL-72B and PC Agent-E failed).

Task

Can you disable the cone icon in the splash screen? I am tired of its skeuomorphic design.

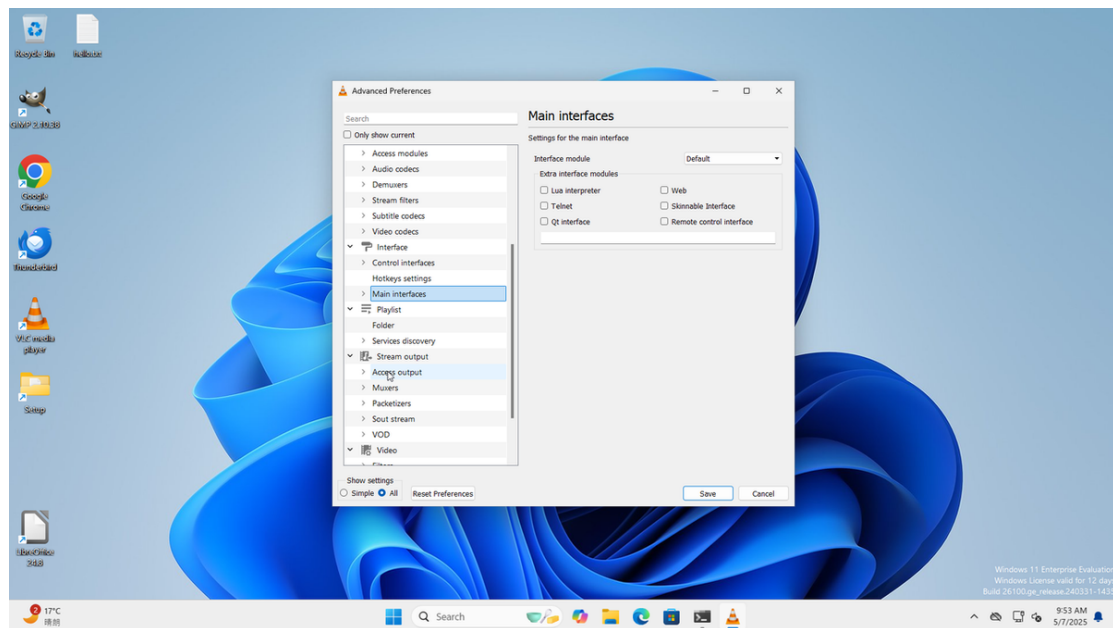
Analysis:

In this example, both models lacked the specific knowledge required to disable the cone icon in the VLC splash screen. PC Agent-E explored multiple menus and interfaces but was unable to locate the correct setting. Qwen similarly attempted several options but repeatedly navigated to irrelevant interfaces and ultimately failed as well.

1.Excerpt of PC Agent-E's trajectory

Step 12

Observation



Plan

Looking at the current screenshot, I can see the Advanced Preferences window of VLC media player with the "Main interfaces" section selected in the left panel. The right side shows options for various interface modules including checkboxes for "Lua interpreter," "Telnet," "Qt interface," "Web," "Skinnable Interface," and "Remote control interface."

The task is to disable the cone icon in the splash screen, which is part of the VLC interface. I need to look for settings specifically related to the splash screen or startup display. Based on what I can see in the current view, there's no direct option labeled for the splash screen.

I should continue exploring the interface settings further. Since we've scrolled down and checked the Qt interface section, I need to look at other interface-related categories that might contain splash screen settings.

Looking at the left panel, I can see several categories and subcategories. Since we're looking for splash screen settings, I should check if there are any options related to appearance or startup in the interface section. I notice there's a "Main interfaces" option already selected, but I should check if there are any other relevant subcategories under "Interface" that might contain splash screen settings.

I'll click on "Control interfaces" to see if there are any splash screen-related settings there.

Action

click (464, 295)

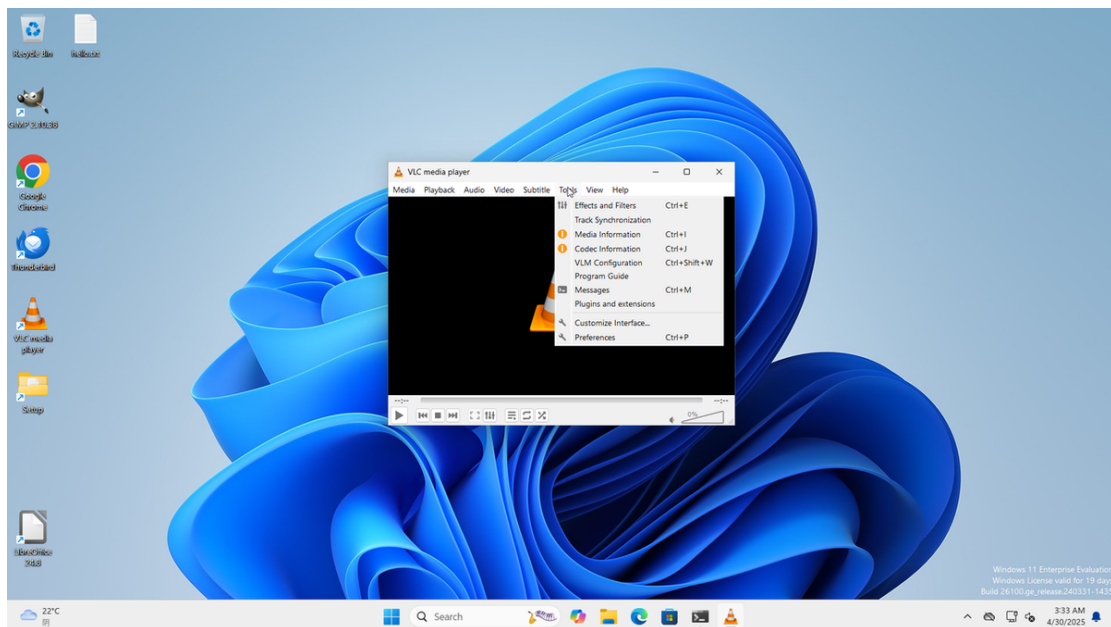
Results:

The model kept exploring different panels and options but failed to find the correct option.

2.Excerpt of Qwen's trajectory

Step 7

Observation



Plan

Plan: Thought process: I need to access the Preferences menu again within the Tools menu. This will allow me to navigate to the necessary settings related to the splash screen where I can disable the cone icon.

Action

click (803, 384)

Results:

The model kept trying and there were multiple repeated attempts, and finally failed to find the correct option.

B. Grounding (Both Qwen2.5-VL-72B and PC Agent-E failed).

Task:

I am peer-reviewing my friend's course outline. I think the last paragraph is redundant so I want to add strike-through on words in the last paragraph. Can you do this for me?

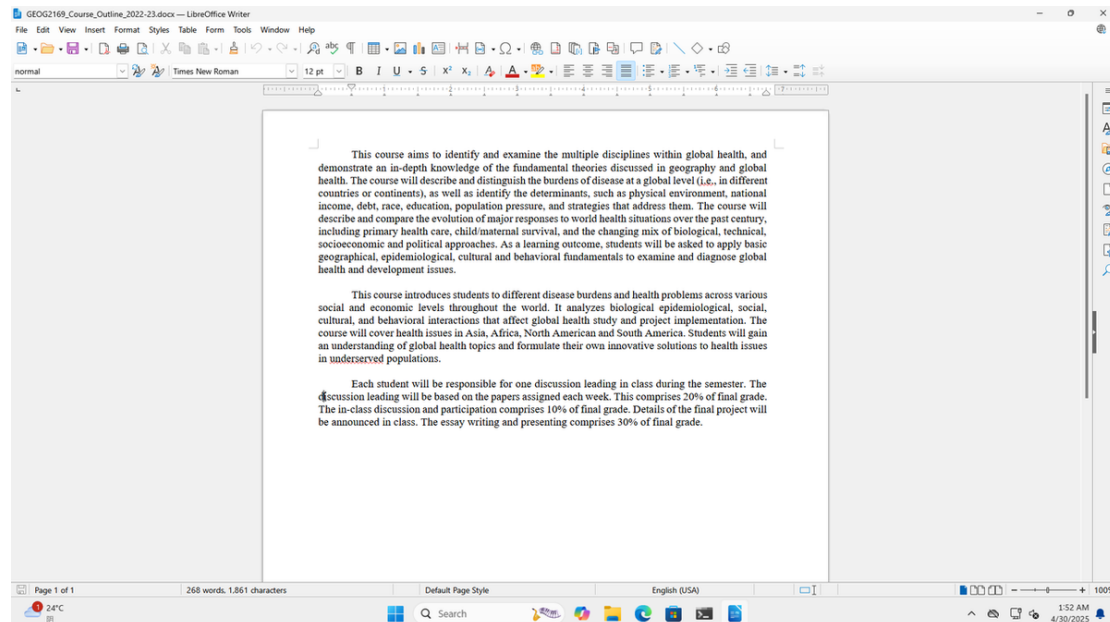
Analysis:

Both PC Agent-E and Qwen wanted to select the last paragraph with drag action, but failed to do so because of inaccurate grounding.

1.Excerpt of PC Agent-E's trajectory

Step 2

Observation



Plan

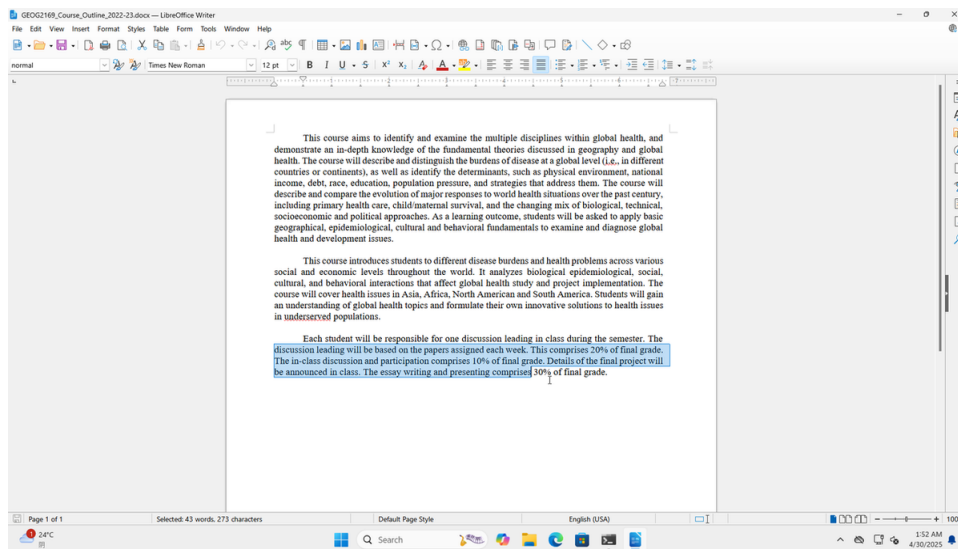
The goal is to add a strike-through to the words in the last paragraph. I have clicked at the beginning of the last paragraph, so the next step is to **drag to the end of the paragraph to select all the text.**

Action

drag from (360, 450) to (720, 490)

Results:

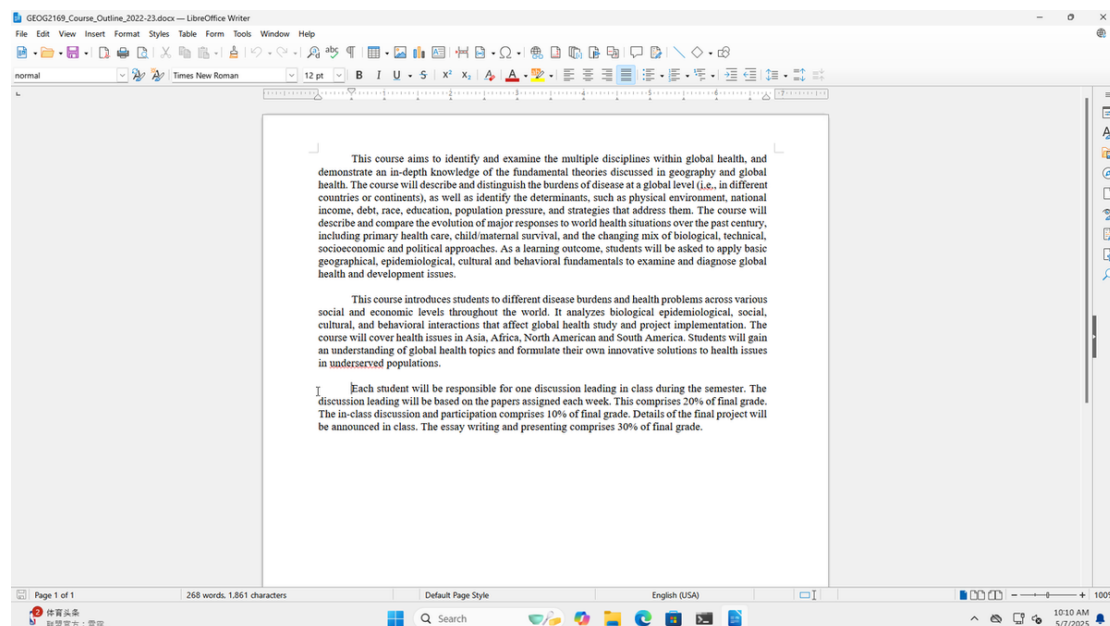
Failed to select all text in the last paragraph.



2.Excerpt of PC Agent-E's trajectory

Step 4

Observation



Plan

I'll analyze the current state and determine the next action to help you apply strike-through formatting to the last paragraph.

1. Current Observation- I can see a LibreOffice Writer document with a course outline

- The cursor appears to be positioned at the beginning of the last paragraph (starting with "Each student will be responsible...")

- I've tried clicking multiple times at the same position, but haven't successfully selected the text yet
 - I need to select the entire paragraph before applying strike-through formatting
2. Previous Action Analysis- My previous clicks have positioned the cursor but haven't selected the text
 - Triple-clicking (which is typically used to select a paragraph) hasn't worked as expected
 - I need to change my approach
 3. Progress Assessment- I've successfully positioned the cursor at the start of the paragraph
 - Now I need to effectively select all text in this paragraph
 4. Next Step Plan- Since triple-clicking hasn't worked, I'll try a different approach: clicking and dragging from the start to the end of the paragraph
 - This will allow me to manually select all the text in the paragraph
 - Then I can apply the strike-through formatting

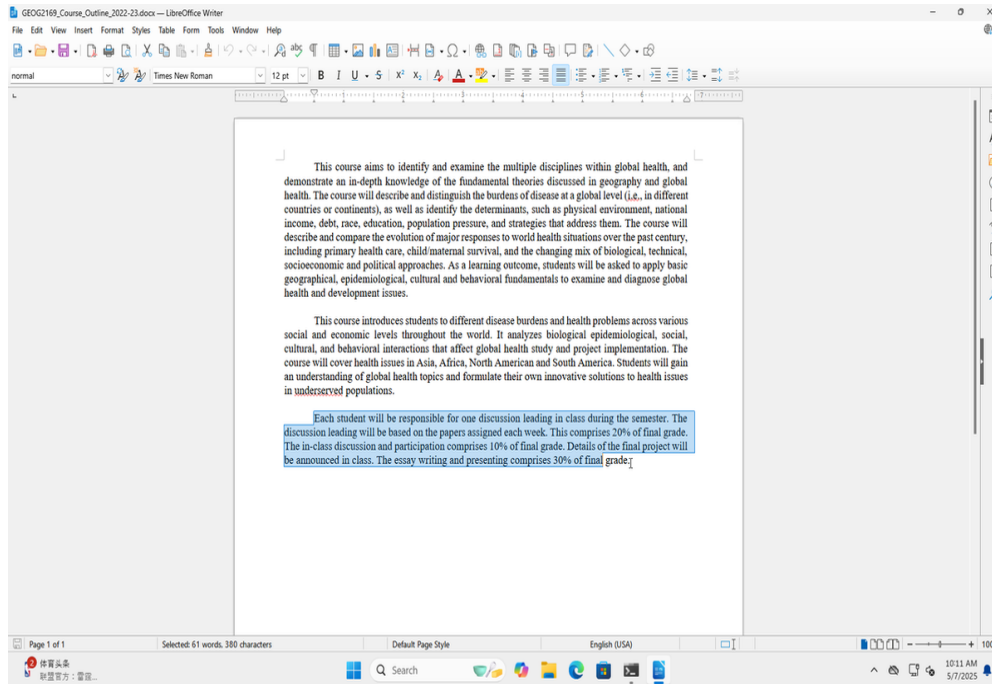
For this step, I'll **click at the start of the paragraph and drag to the end to select all text.**

Action

drag from (353, 439) to (798, 483)

Results:

Failed to select all text in the last paragraph due to inaccurate grounding of the end of last paragraph.



C.Planning/Reasoning (Qwen failed; PC Agent-E succeeded).

Task:

Please help me modify the setting of VS Code to keep my cursor focused on the debug console when debugging in VS Code, instead of automatically focusing back on the Editor.

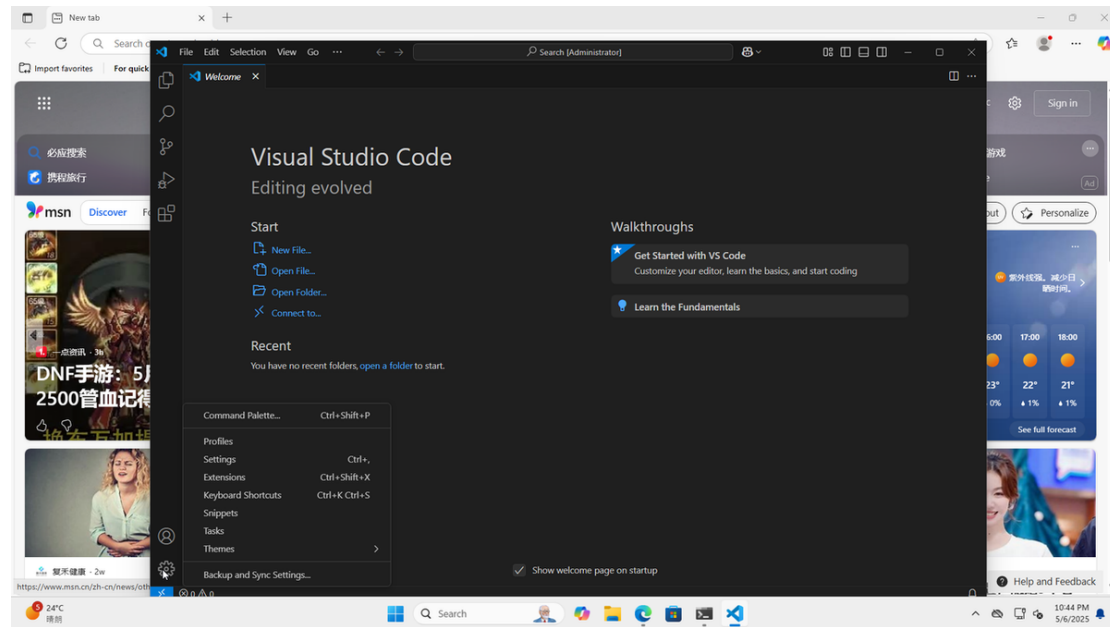
Analysis:

Both PC Agent-E and Qwen wanted to open settings and search for "debug console focus", which is the essential knowledge for achieving this task. However, PC Agent-E carefully observes the screen state and decides to perform the next step of clicking on the search box and then typing the relevant search term, but Qwen didn't carefully observe the screen and decides to type the search term when the setting interface was not open, missing two critical steps of opening the setting interface and focusing on the search bar.

1.Excerpt of PC Agent-E's trajectory

Step 11

Observation



Plan

Looking at the current state, I can see that VS Code has been opened successfully, and a settings menu is displayed in the left panel. I can see various settings options like "Command Palette...", "Profiles", "Settings", "Extensions", etc. To modify the setting that keeps the cursor focused on the debug console during debugging, I need to access the Settings section.

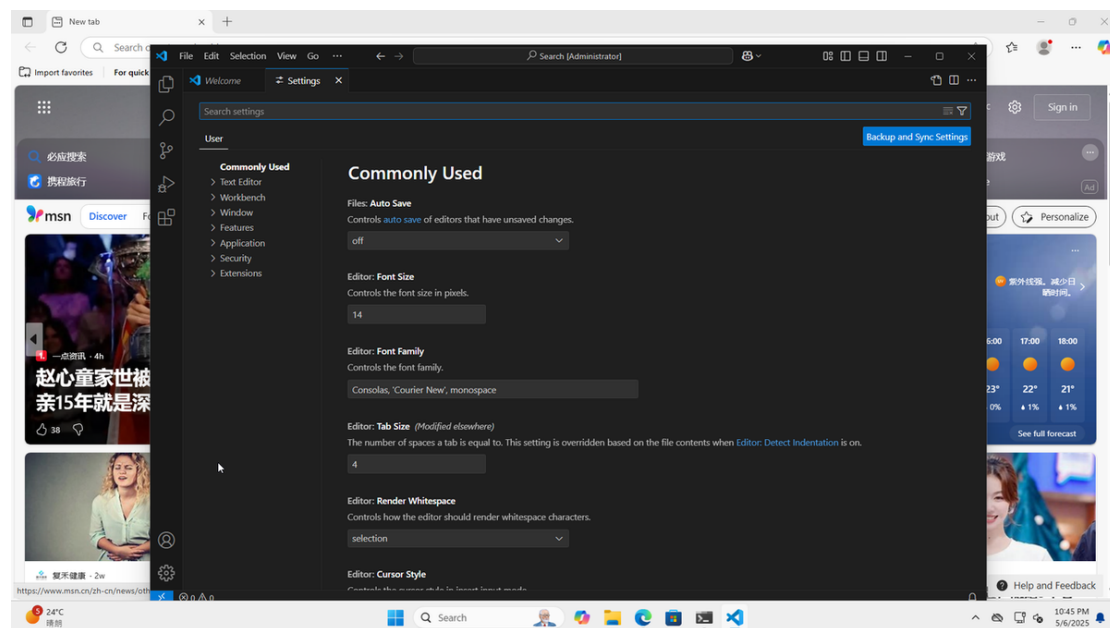
I can see "Settings" listed in the menu with a keyboard shortcut "Ctrl+," next to it. **Clicking on "Settings"** will open the VS Code settings interface where I can search for and modify the debug console focus setting.

Action

click (239, 522)

Step 12

Observation



Plan

Plan: I'll analyze the current screenshot and determine the next action to help modify VS Code settings to keep the cursor focused on the debug console during debugging.

1. Looking at the screenshot, I can see that VS Code's Settings interface is now open. The screenshot shows the "Commonly Used" settings section with options like "Auto Save", "Font Size", "Font Family", etc.
2. My previous action of clicking on "Settings" was successful - VS Code is now displaying its settings interface.
3. To find the setting that keeps the cursor focused on the debug console during debugging, I need to search for relevant settings.
4. I can see a search bar at the top of the settings panel with the placeholder text "Search settings". This is where I should type to find the specific setting we're looking for.
5. The search function will allow me to quickly locate settings related to the debug console focus without having to manually browse through all the settings categories.

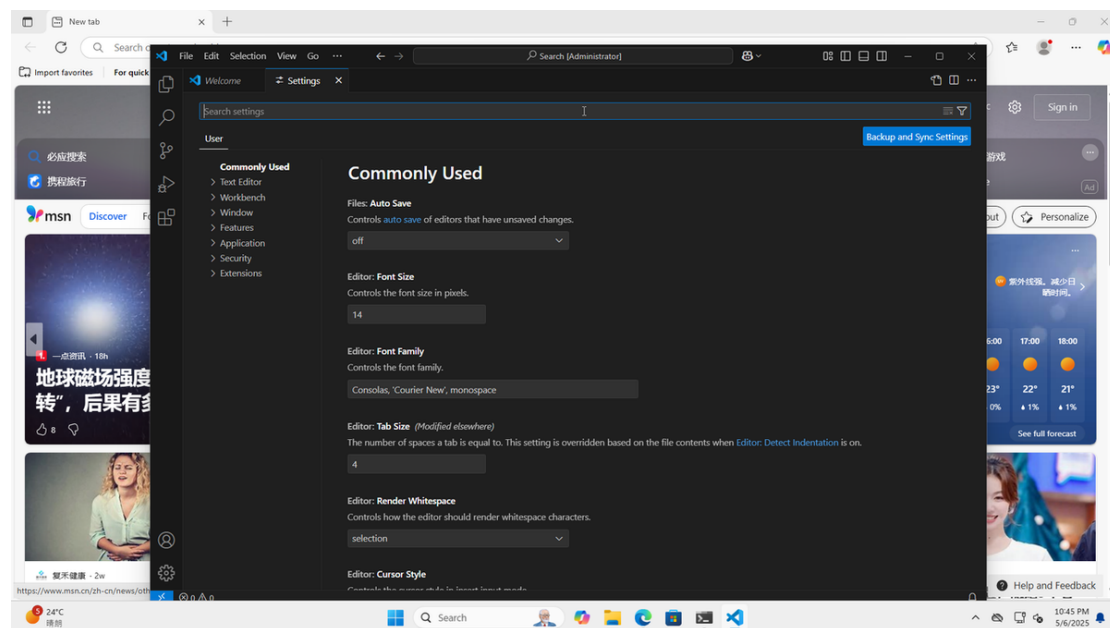
The most efficient next step is to click on the search box and then type the relevant search term to find the setting we need.

Action

click (660, 116)

Step 13

Observation



Plan

Looking at the current screenshot, I can see that I've successfully clicked on the VS Code settings search box. The search box is now active and ready for input. The settings interface is displayed with various categories on the left side and specific settings on the right.

To modify VS Code settings to keep the cursor focused on the debug console during debugging, I need to search for the relevant setting. The most efficient way to find this is to type a relevant search term in the search box.

Since we want to keep the cursor focused on the debug console instead of automatically focusing back on the editor, I should search for terms related to "debug console focus" or "debug editor focus".

The search box is now active, so I can proceed with typing a search term to find the specific setting we need.

Action

type text: debug console focus

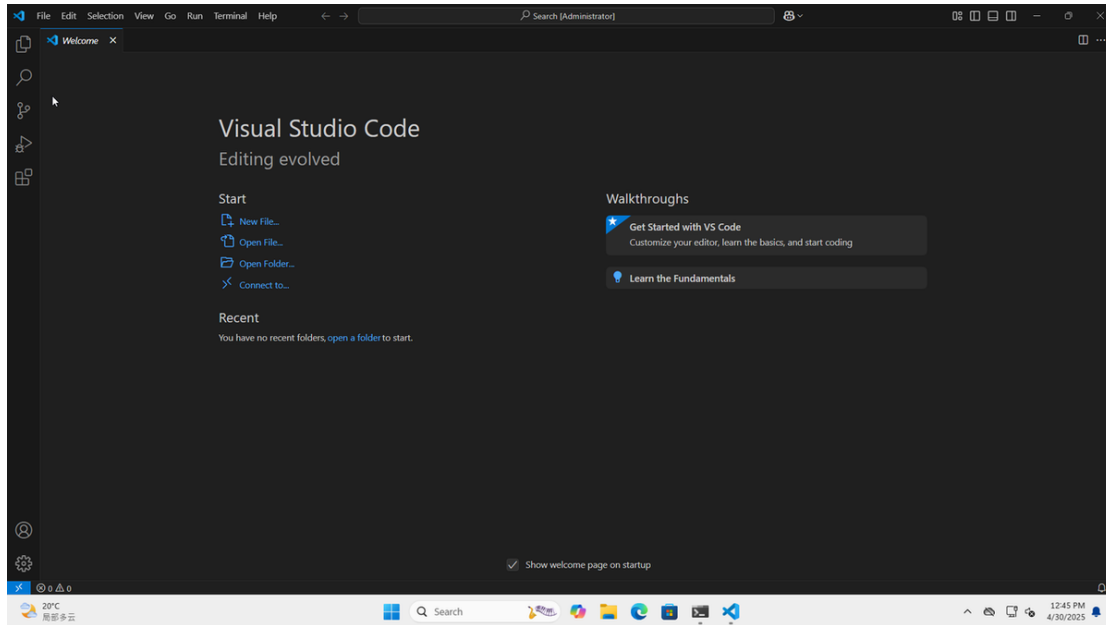
Results:

Successfully type in "debug console focus" in the search box in setting interface

2.Excerpt of Qwen's trajectory

Step 8

Observation



Plan

Plan: My thought process: The settings editor is now open (actually it's not), which is where we need to make changes to keep the cursor focused on the debug console during debugging. The next step is to locate the specific setting related to debug console focus. This can be done by using the search functionality within the settings editor to look for relevant keywords like "cursor" or "debug console focus."

Action

type text: cursor debug console

Results:

Failed to type in "debug console focus" in the search box in setting interface.