

Figure 1: Qualitative results of Falling sequence *cell*. Method: **top row**: linear interpolation, **mid row**: affine interpolation, **bottom row**: groundtruth.

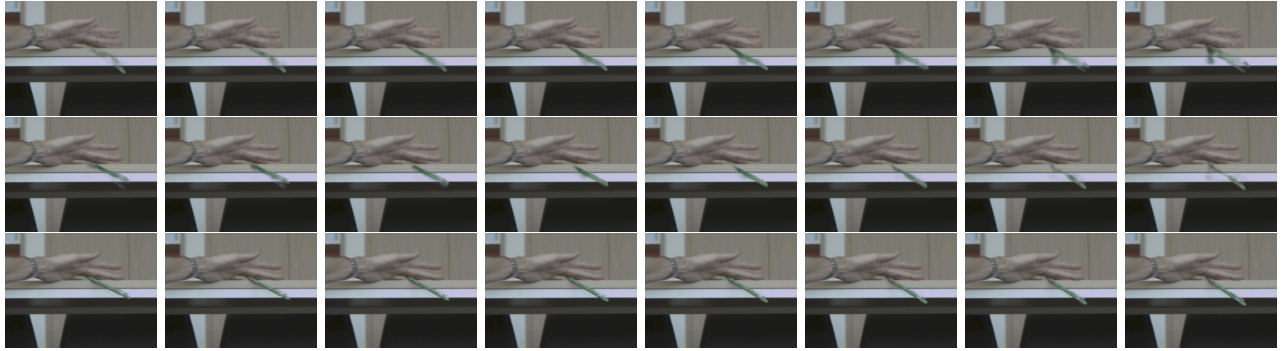


Figure 2: Qualitative results of Falling sequence *pen*. Method: **top row**: linear interpolation, **mid row**: affine interpolation, **bottom row**: groundtruth.