
Author Response for SiamMAE

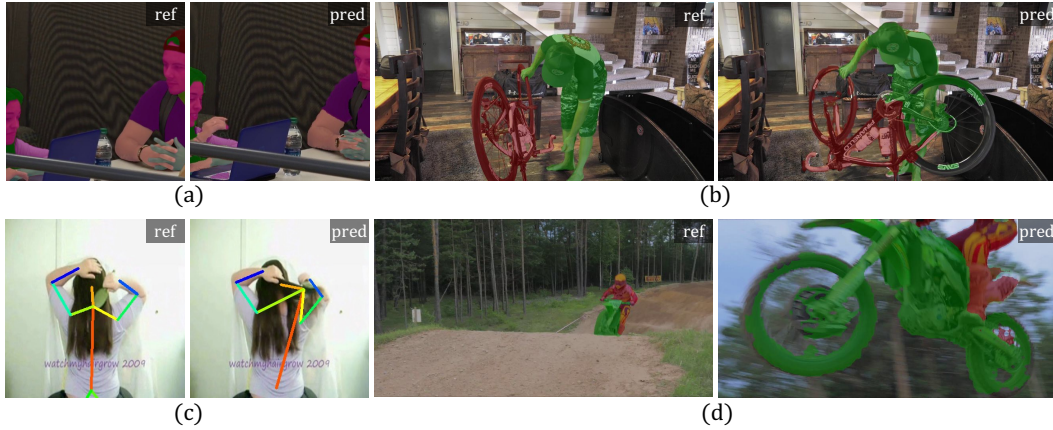


Figure 1: **Failure analysis.** A key disadvantage of using label propagation the lack of global semantic understanding of objects. Assigning labels based solely on low-level features can lead to globally inconsistent labels, as illustrated by the following examples: (a) a segmentation mask that covers both hands; (b) a pose key-point determined using the person’s hair, rather than their posture; (c) challenges in assigning labels to parts of the object that are occluded in the reference frame; and (d) the inability to assign labels to fine object details, such as the spokes of a tire.