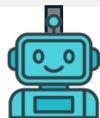
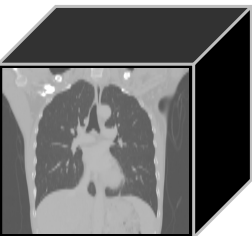


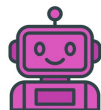
### Example Free-text Findings

When examined in the lung parenchyma window; On the right, nodular images with a size of 6x2.5 mm, superposed on the major fissure, were observed and were initially evaluated in favor of the intrapulmonary lymph node. Focal nodular opacity with vascular enlargement is observed in the right lung middle lobe adjacent to the major fissure, in the left lung lower lobe basal segment and lower lobe superior segment, and in the right lung lower lobe mediobasal segment, and it is suspicious for ultra-early Covid-19 pneumonia. Bilateral peribronchial thickenings were observed. As far as can be observed: The heart is larger than normal. No pleural or pericardial effusion was detected. ...



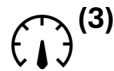
(1)

Report Structuring



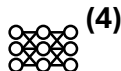
(2)

Classification



(3)

Anatomy  
Dataset Generator



(4)

Anatomy  
Models

#### Example Lung Findings

When examined in the lung parenchyma window; On the right, nodular images with a size of 6x2.5 mm, superposed on the major fissure, were observed and were initially evaluated in favor of the intrapulmonary lymph node. Focal nodular opacity with vascular enlargement is observed in the right lung middle lobe adjacent to the major fissure, in the left lung lower lobe basal segment and lower lobe superior segment, and in the right lung lower lobe mediobasal segment, and it is suspicious for ultra-early Covid-19 pneumonia.



Atelectasis ✗

Lung nodule ✓

Lung opacity ✓

#### Example Trachea & Bronchie Findings

Bilateral peribronchial thickenings were observed.



Peribronchial thickening ✓

Bronchiectasis ✗

#### Example Heart Findings

As far as can be observed: The heart is larger than normal. No pleural or pericardial effusion was detected.



Cardiomegaly ✗

Pericardial effusion ✓

