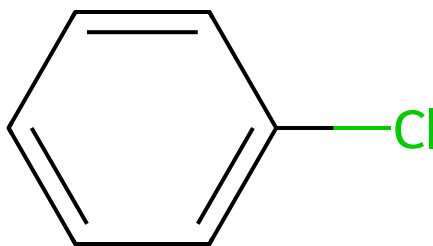
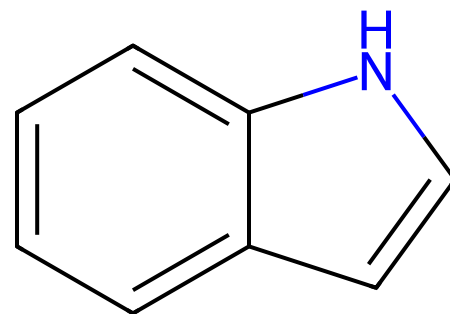


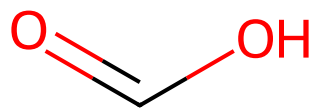
Token ID: 2524
Sequence: c1ccncc1



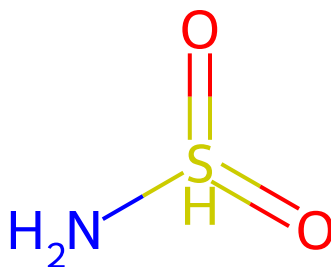
Token ID: 3116
Sequence: Clc1ccccc1



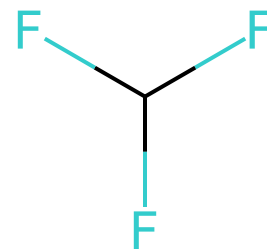
Token ID: 2977
Sequence: c1ccc2[nH]ccc2c1



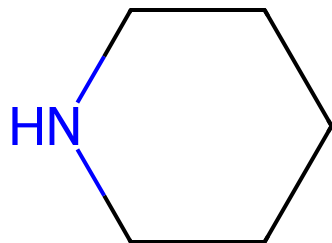
Token ID: 1057
Sequence: O=CO



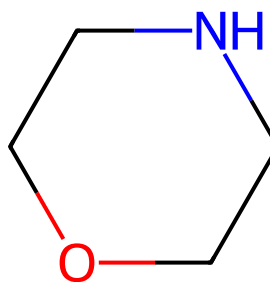
Token ID: 378
Sequence: N[SH](=O)=O



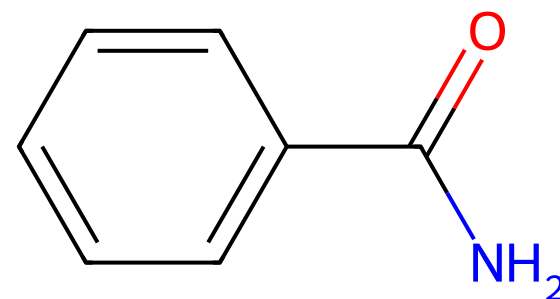
Token ID: 2119
Sequence: FC(F)F



Token ID: 1544
Sequence: C1CCNCC1



Token ID: 662
Sequence: C1COCCN1



Token ID: 2059
Sequence: NC(=O)c1ccccc1