

## 426 A Broader Impact.

427 Low light image enhancement is the classical task that improves the quality of degraded images, exhibiting the  
 428 promising value of research and application. Our proposed global-then-local state space enhances the feature  
 429 extraction ability by integrating implicit Retinex-aware strategy. We believe our method has the potential to  
 430 advance other low-level tasks and may inspire future research in state space models. However, there could  
 431 be negative effects brought by the proposed method. For example, the inevitable deviations of training data  
 432 distribution, the generated results for the real world scenarios may exist the color deviation.

## 433 B More results.



Figure 7: More qualitative comparisons with SOTAs.(Zoom in for best view)

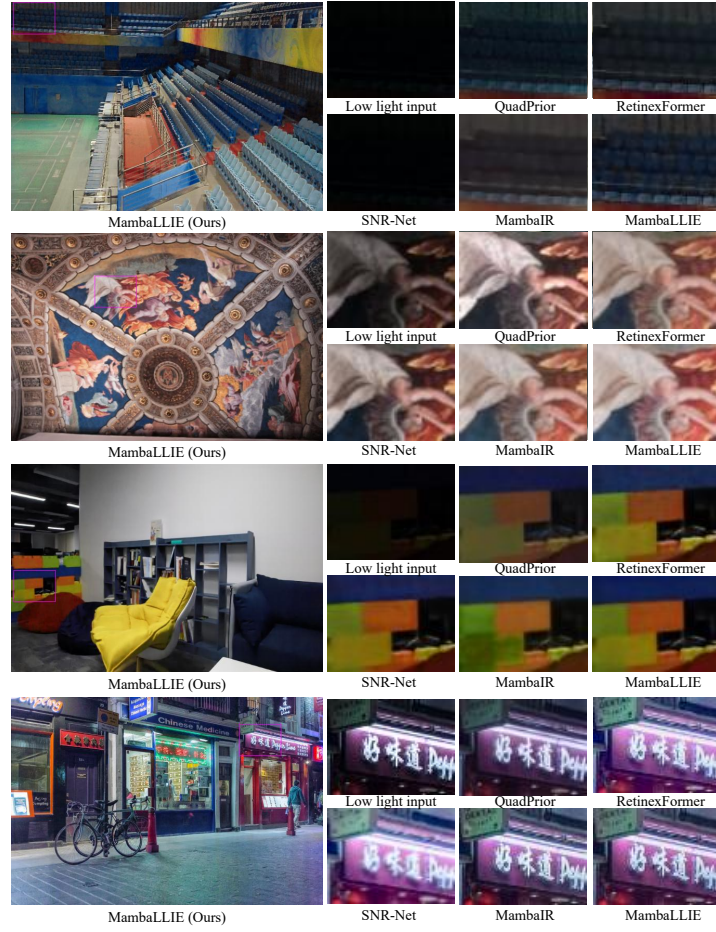


Figure 8: More qualitative comparisons with SOTAs.(Zoom in for best view)

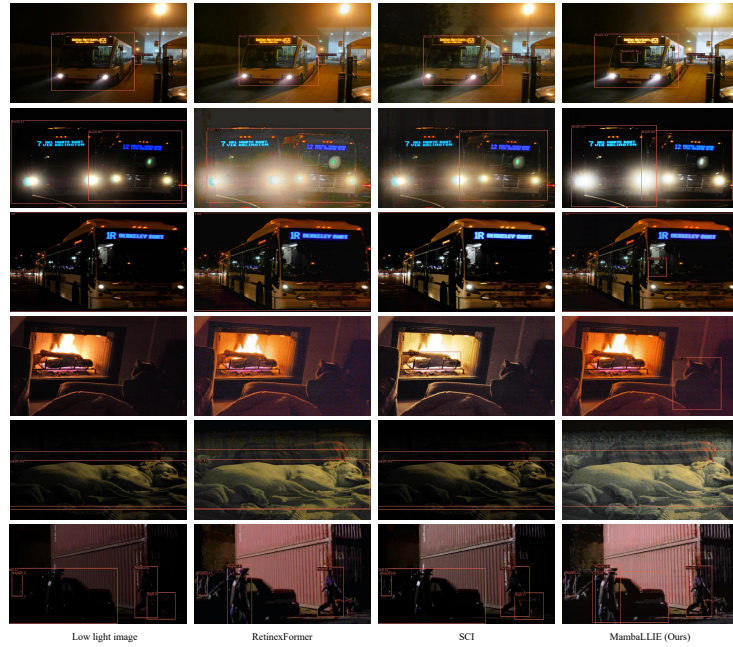


Figure 9: Object detection qualitative comparisons with SOTAs.(Zoom in for best view)