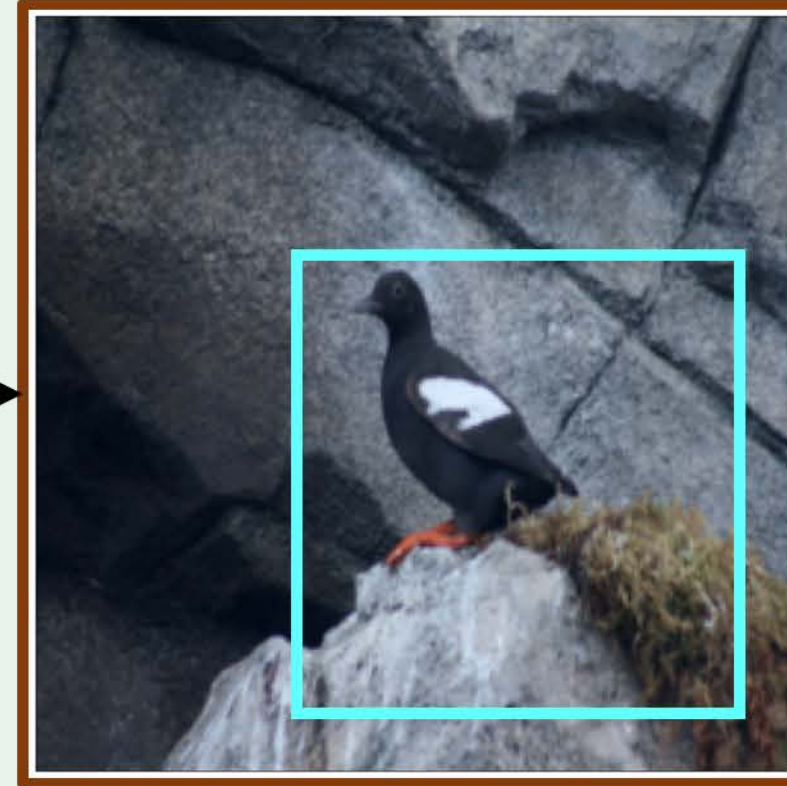


Full-Scale  
Input Image



WSOL Method  
with  
Passive  
Localizer

WSOL Prediction  
"Pseudo" Bounding Box



(a)

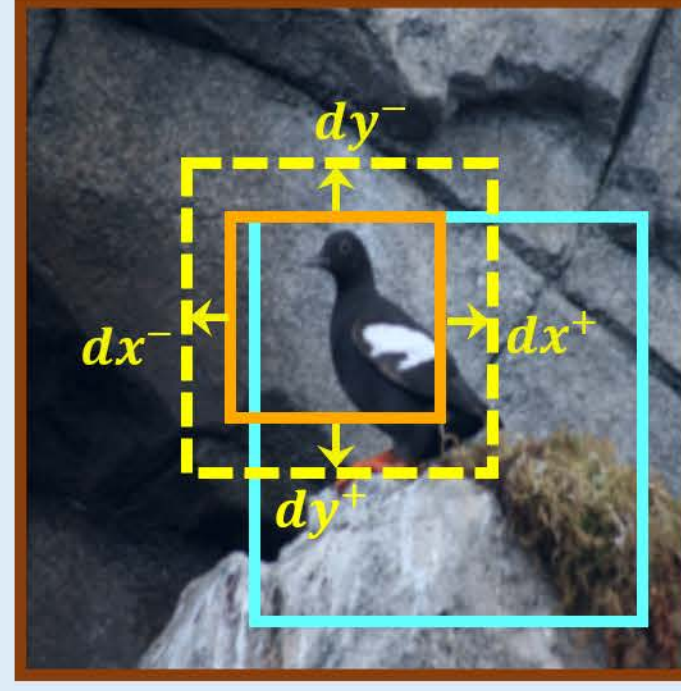
FALcon

All Permitted Actions



VS.

All Possible Actions



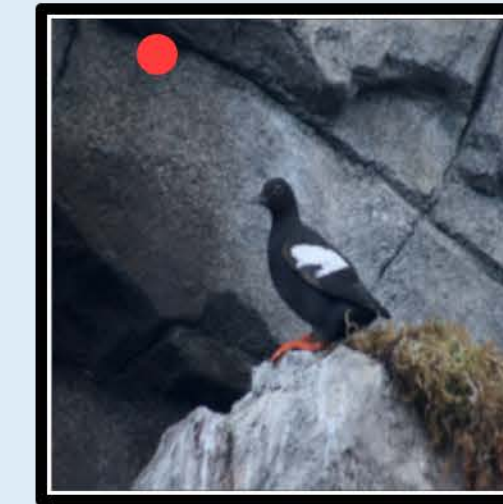
$$targets = \begin{cases} dy^- = 0 \\ dy^+ = 1 \\ dx^- = 0 \\ dx^+ = 1 \\ switch = 0 \end{cases}$$

$$outputs = \begin{cases} dy^- = 0.54 \\ dy^+ = 0.87 \\ dx^+ = 0.32 \\ dx^- = 0.91 \\ switch = 0.28 \end{cases}$$

$$Loss = BCE(outputs, targets)$$

(b)

Saccades



(Switch)

⋮



(Stop)

Foveation

Due to the absence  
of relevant features,  
FALcon emulates  
saccades and  
switches the focus  
point.

(c)