

## Supplementary Materials

### A List of target and social attributes used for prompting

Gender	Ethnicity	Adjective	Profession		
woman man non-binary ( <i>person</i> )	African-American American Indian Asian Black Caucasian East Asian First Nations Hispanic Indigenous American Latino Latinx Native American Multiracial Pacific Islander South Asian Southeast Asian White	Male-leaning:  ambitious assertive confident decisive determined intelligent outspoken self-confident stubborn unreasonable committed	accountant	farmer	office worker
			aerospace engineer	fast food worker	painter
			aide	file clerk	paralegal
			air conditioning installer	financial advisor	payroll clerk
			architect	financial analyst	pharmacist
			author	financial manager	pharmacy technician
			baker	fitness instructor	physical therapist
			bartender	graphic designer	plane mechanic
			career counselor	groundskeeper	plumber
			carpenter	hairstylist	postal worker
			carpet installer	head cook	printing press operator
			cashier	health technician	producer
			CEO	host	psychologist
		childcare worker	hostess	public relations specialist	
		civil engineer	industrial engineer	purchasing agent	
		claims appraiser	insurance agent	radiologic technician	
		cleaner	interior designer	real estate broker	
		clergy	interviewer	receptionist	
		clerk	inventory clerk	repair worker	
		coach	IT specialist	roofer	
		community manager	jailer	sales manager	
		compliance officer	janitor	salesperson	
		computer programmer	laboratory technician	school bus driver	
		computer support specialist	language pathologist	scientist	
		computer systems analyst	librarian	security guard	
		cook	logistician	sheet metal worker	
		correctional officer	machinery mechanic	social assistant	
courier	machinist	social worker			
credit counselor	manager	software developer			
customer service rep.	manicurist	stocker			
data entry keyer	market research analyst	supervisor			
dental assistant	marketing manager	taxi driver			
dental hygienist	massage therapist	teaching assistant			
dentist	mechanic	teller			
designer	mechanical engineer	therapist			
detective	medical records specialist	tractor operator			
director	mental health counselor	truck driver			
dispatcher	metal worker	tutor			
drywall installer	mover	underwriter			
electrical engineer	network administrator	veterinarian			
engineer	nursing assistant	welder			
event planner	nutritionist	wholesale buyer			
executive assistant	occupational therapist	writer			
facilities manager	office clerk				

**Table 4:** A list of the social attributes (gender and ethnicity) and target attributes. The Gender variable has three options specifying a value gender and one option for unspecified gender. Ethnicity and adjective are simply omitted when unspecified in the prompt. All “professions” prompts specify a profession value.

## B Clustering Visualization

### B.0.1 Characterizing the “Identities” clusters.

We embed and cluster the pictures for each <gender, ethnicity> prompt, using the embedding and clustering methods discussed in Section 3. We then calculate the average entropy across these clusters, shown in Table 6 – a lower entropy score means that the prompted social attributes are more clustered together. As can be seen, the BLIP VQA question embeddings have the lowest entropy, suggesting this



**Figure 6:** Clusters 16 (top) and 13 (bottom) in the 48-clusters setting both feature *Latinx* and *woman* prompt terms, with different hair types and skin tones.

	Number of Clusters		
	12	24	48
BLIP			
VQA	<b>1.10</b>	<b>1.49</b>	<b>1.98</b>
CLIP	1.3	1.6	2.15

**Table 5:** VQA embeddings best separate social attributes according to cluster entropy. Using a 99% confidence interval bootstrap estimator, all values are  $\pm 0.02$ . Statistically significant results are bolded.

embedding method is the most useful for representing visual depictions of social attributes in this setting (see Figure 8 in the Appendix for more details on the embeddings). We also find that while most clusters correspond to specific intersections of gender and ethnicity, some focus on one or the other: see the Appendix (Tables 8, 9, and 10) for the full distribution disaggregated by social identity terms.

Figure 5 illustrates how the method of using visual embeddings for gender and ethnicity terms, rather than single labels, allows for ethnicity to be represented with varied visual features. The example images shown are from the two clusters that prominently feature the ethnicity term “Latinx”<sup>6</sup>. In both clusters, “Latinx” is the most frequently appearing ethnicity term and “woman” is the most frequent gender word. The two clusters depict people with different skin tones and hair types, showcasing the visual variation of the ethnicity group and further reinforcing the difficulty of identifying ethnicities solely based on visual characteristics. We provide an interactive tool to further explore the individual clusters.

## B.0.2 Measuring the aggregated social diversity of TTI system outputs.

Having identified regions in the space of the image generations’ embeddings that reflect variations in visual features associated with social attributes, we can now use them to quantify the diversity and representativity of the models’ outputs for the target attributes. We measure diversity as the entropy of the distribution of the examples across these regions. Entropy increases from the least diverse setting (all examples in the same region) to the most diverse (all regions equally likely).

System	BLIP VQA embedding				CLIP embedding			
	12 clusters		48 clusters		12 clusters		48 clusters	
	Ids	Profs	Ids	Profs	Ids	Profs	Ids	Profs
SD v1.4	3.40 ( $\pm 0.04$ )	<b>2.30 (<math>\pm 0.01</math>)</b>	4.95 ( $\pm 0.07$ )	<b>4.09 (<math>\pm 0.01</math>)</b>	<u>3.25 (<math>\pm 0.02</math>)</u>	<b>2.44 (<math>\pm 0.01</math>)</b>	<u>4.72 (<math>\pm 0.05</math>)</u>	<b>4.05 (<math>\pm 0.01</math>)</b>
SD v2	3.43 ( $\pm 0.03$ )	1.86 ( $\pm 0.01$ )	4.90 ( $\pm 0.06$ )	3.64 ( $\pm 0.01$ )	<u>3.08 (<math>\pm 0.04</math>)</u>	2.13 ( $\pm 0.01$ )	<u>4.72 (<math>\pm 0.06</math>)</u>	3.59 ( $\pm 0.01$ )
Dall-E 2	3.35 ( $\pm 0.04$ )	1.36 ( $\pm 0.01$ )	4.85 ( $\pm 0.04$ )	3.07 ( $\pm 0.01$ )	<u>3.24 (<math>\pm 0.04</math>)</u>	1.95 ( $\pm 0.01$ )	<u>4.55 (<math>\pm 0.05</math>)</u>	3.46 ( $\pm 0.01$ )

**Table 6:** Comparing the diversity of images generated by all three systems, measured as the entropy of their image assignments across clusters (99% bootstrap confidence interval). While the “identities” images generated by all systems are spread roughly evenly across clusters (“Ids” columns), the “professions” images generated by Dall-E 2 are significantly less diverse than those generated by Stable Diffusion v1.4, with v2 standing in the middle between the two (“Profs” columns).

Table 6 summarizes the outcome of this measurement across datasets, embedding methods, and number of clusters. Notably, entropy is very similar across systems for their respective “identities” datasets; the values are mostly within each other’s confidence intervals in the corresponding columns. This means that all systems showcase a similar range of visual features when explicitly prompted to depict various combinations of the gender and ethnicity social attributes. However, in a generation setting that is closer to a standard use case where these social attributes are left unspecified, the generations of Stable Diffusion v2 and Dall-E 2 are much less visually diverse, with Dall-E 2 ranking last in all settings. This pattern is also apparent when projecting all of the image embeddings into a common 2D space – we can observe that while the images span the whole space for all systems for the “identities” dataset, the prompts focused

<sup>6</sup>The term “Hispanic” is used in the U.S. Census to correspond to “Hispanic, Latino, or Spanish origin”, and this has recently been revised to capture the geographic diversity of this broad category. [39].

on the target attributes cover a smaller part of the space for Stable Diffusion v2 than for v1, and smallest of all for Dall-E 2(see Figure 8 in the Appendix for a visual representation).

We motivated our analysis of the social dynamics of TTI systems in Section 2 and 3 by pointing out their potential for exacerbating existing social biases and stereotypes. While aggregated measures of diversity are an important first step in understanding those dynamics, the impact of both of these phenomena depend on which social groups are stereotyped or misrepresented. Thus, we need to also be able to characterize which specific social attributes are under-represented to give rise to lower diversity values across the identified regions. Table 7 starts providing such a characterization by linking the frequency of specific clusters to the most featured social attributes in their “identities” images’ generation prompts. Of particular note are clusters 5, 6, and 8 – while Dall-E 2has slightly more examples assigned to cluster 5, which corresponds to features associated with “non-binary” prompts, it also under-represents both clusters associated with “Black” and “African American” ethnicity prompts, reflecting well-known social biases against Black people in the US [6].

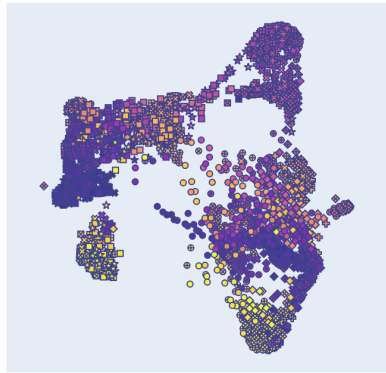
Cluster	4	2	5	6	3	7	11	8								
SD 1.4	47.1	27.3	4.0	3.9	4.9	3.2	3.1	3.0								
SD 2	58.2	24.1	4.8	4.7	1.9	1.3	1.8	2.5								
Dall-E	74.0	13.1	5.8	0.1	1.5	3.3	1.6	0.4								
Ethnic.	White	29.2	Lat-x	19.1	White	15.8	AfrAm	32.9	S-Asi	30.2	PacIs	16.0	1stNa	20.6	AfrAm	35.7
	Unspe	28.7	Cauca	14.7	Cauca	14.7	Black	31.1	Hispa	20.3	SEAsi	13.5	Lat-x	14.7	Black	34.4
	Cauca	27.5	Hispa	13.7	Multi	8.5	Multi	24.8	Lat-o	16.3	Lat-o	10.9	Lat-o	13.7	Multi	22.1
Gender	Man	55.6	Wom	81.4	NB	90.4	Wom	52.8	Man	51.0	Man	42.3	NB	67.6	Man	53.9
	Unspe	42.1	Unspe	11.8	Wom	9.6	NB	28.6	Unspe	45.5	Unspe	32.7	Wom	26.5	Unspe	42.9
	NB	2.2	NB	6.9	Unspe	18.6	NB	3.5	NB	25.0	Unspe	5.9	NB	2.6	NB	2.6

**Table 7:** The 8 most represented “identities” clusters in the 12-cluster setting. The top 3 lines correspond to the proportion of images in the “professions” dataset generated by each system that are assigned to the cluster. The bottom 6 lines show the top three ethnicity and top three gender words for the prompts that generated the cluster’s images. **Cluster 4** is the most represented cluster across systems and is made up of “identities” images generated for prompts mostly mentioning the words White/Caucasian/Man. **Cluster 6**, which is made up of “identities” examples mostly mentioning Black/African American/Woman, represents only 3.9% and 4.7% of Stable Diffusion “professions” generations for v1.4 and v2 respectively, and only 0.1% for Dall-E 2

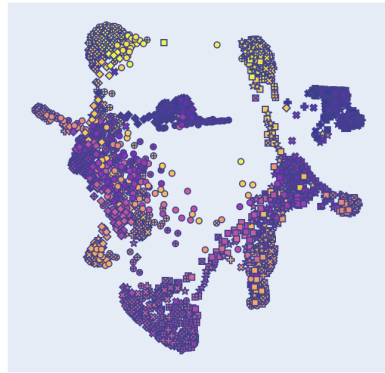
### B.0.3 Disaggregated analysis by profession

Our approach also allows for a more granular analysis of the relation between the social attributes (profession) and identity characteristics (ethnicity/gender), allowing us to connect our findings to prior work on bias and stereotypes. To that end, we compare the diversity of cluster assignments for each of the target attributes by looking at the measures presented in Tables 6 and 7 for the subsets of the “Professions” dataset corresponding to each TTI system.

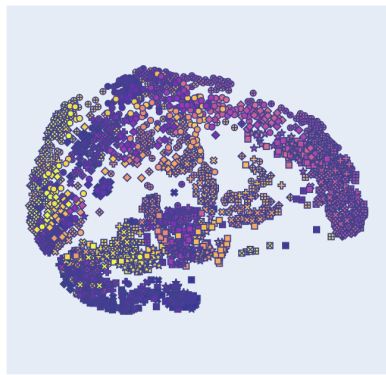
We can sort the sets of images generated for each profession from most to least diverse according to our cluster entropy-based measure and compare it to the BLS gender statistics. Across systems, we find that more observed gender balance in the US workforce corresponds to more diverse generations, albeit along different axes — primarily gender for “singer” (clusters 2 and 6 are more over-represented with respect to the average than 4 and 8), primarily ethnicity for “taxi driver” (2 and 6 under-represented, 8 over-represented) or “maid”, and the intersection of gender and ethnicity for “social worker” specifically featuring the cluster most associated with “Black” and “woman” (cluster 6) (see Table 14 in the Appendix). We also find consistent differences between Stable Diffusion v1.4 and Dall-E 2. Low-diversity professions for Stable Diffusion v 1.4 include ones where BLS reports more than 80% women, with the system exacerbating gender stereotypes for “dental assistant”, “event planner”, “nutritionist”, and “receptionist”, whereas these professions tend to have higher diversity in the Dall-E 2generation datasets that over-represent the “man” clusters more strongly across the board. On the other hand, we see that some of the lowest-diversity professions in the Dall-E 2images include positions of authority such as “CEO” or “director”, assigning over 97% of generations in both cases to cluster 4 (mostly “white” and “man”) even though the BLS reports these professions as 29.1% and 39.6% women respectively. This analysis barely scratches the surface of the different bias dynamics unearthed, and we encourage readers to look through the full data for further patterns they may find of particular interest (Table 15 and 16 in the Appendix).



(a) BLIP VQA: "appearance" question



(b) BLIP VQA: "ethnicity" question

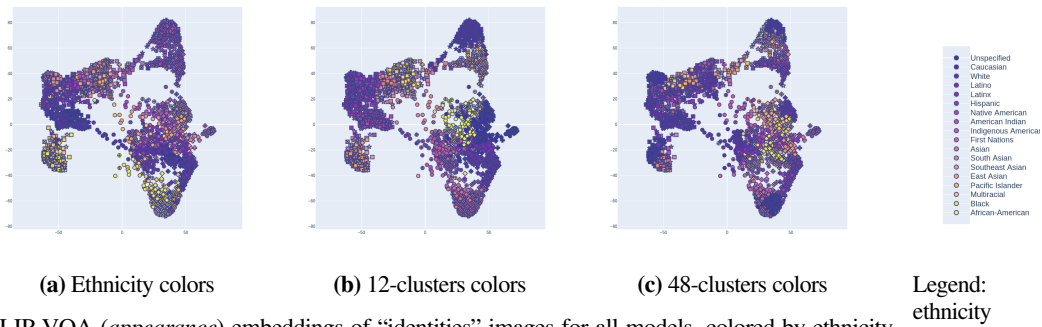


(c) CLIP-base-32

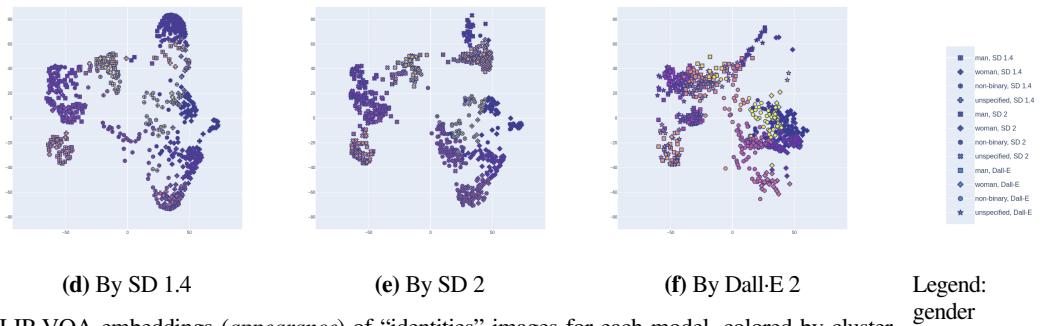
- man, SD 1.4
- ◆ woman, SD 1.4
- non-binary, SD 1.4
- ⊙ unspecified, SD 1.4
- man, SD 2
- ◆ woman, SD 2
- non-binary, SD 2
- ⊙ unspecified, SD 2
- man, Dall-E
- ◆ woman, Dall-E
- non-binary, Dall-E
- ⊙ unspecified, Dall-E
- ★ unspecified, Dall-E
- Unspecified
- Caucasian
- White
- Latino
- Latinx
- Hispanic
- Native American
- American Indian
- Indigenous American
- First Nations
- Asian
- South Asian
- Southeast Asian
- East Asian
- Pacific Islander
- Multiracial
- Black
- African-American

Legend

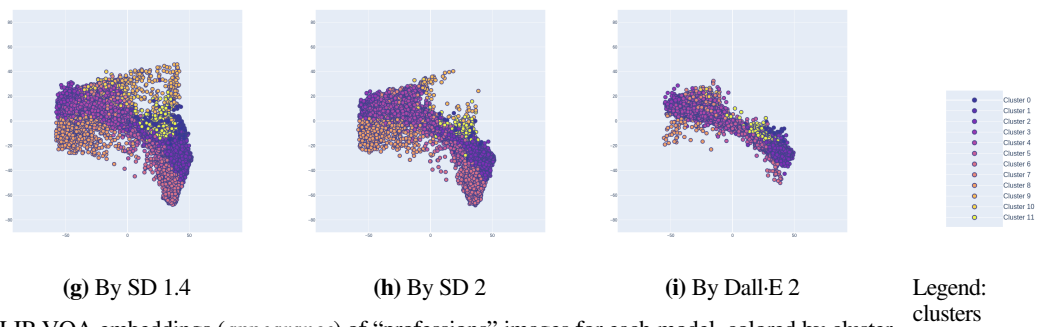
**Figure 7:** Comparing 2D projections obtained with U-Map for the embeddings obtained with the BLIP VQA model for the "ethnicity" and "appearance" questions as well as with the CLIP image encoder. In all cases, the examples corresponding to prompts mentioning any of the words denoting Native American stand apart from the rest of the space.



BLIP-VQA (*appearance*) embeddings of “identities” images for all models, colored by ethnicity mentioned in the prompt (a), cluster assignment in the 12-clusters setting (b) and in the 48-clusters setting (c).

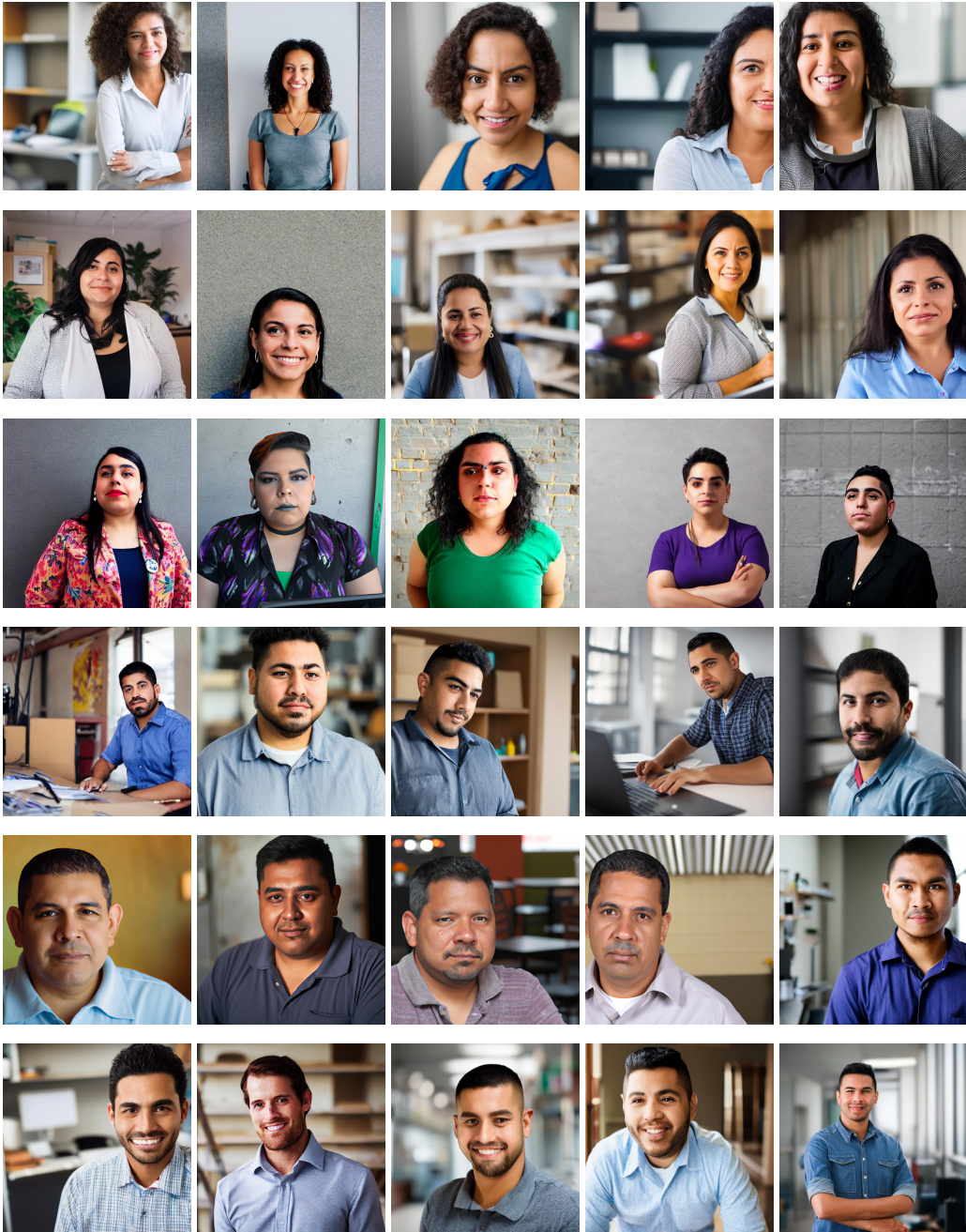


BLIP-VQA embeddings (*appearance*) of “identities” images for each model, colored by cluster assignment in the 12-cluster setting.



BLIP-VQA embeddings (*appearance*) of “professions” images for each model, colored by cluster assignment in the 12-cluster setting.

**Figure 8:** 2D projection of the BLIP-VQA embeddings for the “appearance” question. The 2D projection is obtained by fitting U-Map to the aggregated set of “identities” embeddings (all neighbors, spread=20) and then applied to each of the sets, so all figures above are visualized the same 2D space. While the “identities” images from all models are broadly evenly distributed across clusters ((d) to (f)), the distribution of the 2D projections of the “professions” images already show differences in diversity across models ((g) to (i)).



**Figure 9:** Clusters 13, 16, 20, 17, 41, and 8 respectively in the 48-cluster setting all have LATIn-o-x or Hispanic as the most represented word in the prompt, but show significant variation of appearance, including across clusters featuring the same gender words in their prompts. Full cluster composition can be found in Tables 9 and 10

### C Cluster Composition

In the 12-cluster setting (Table 8) while some of the clusters focus nearly exclusively on the gender dimension as the more salient variable (*e.g.* cluster 7 regrouping a subset of the “non-binary” prompts), others put more weight on ethnicity when the models produce more stereotypical depictions across that axis (*e.g.* cluster 9 for Native American figures), and most correspond to some intersection of the two attributes (*e.g.* clusters 2, and 4 both correspond to a combination of “White/Hispanic/Unspecified” with mostly “woman” for 2 and “man” for 4, clusters 6 and 8 correspond to a combination of “Black/Multiracial” with mostly “woman” and mostly “man” respectively).

Cluster ID		0	1	2	3	4	5	6	7	8	9	10	11
Gender	man	10.5	30.2	11.8	45.5	42.1	-	18.6	32.7	42.9	29.8	34.7	5.9
	woman	-	31.2	-	51.0	55.6	-	-	42.3	53.9	27.3	48.8	-
	woman	55.7	18.6	81.4	-	-	9.6	52.8	-	0.6	43.0	-	26.5
	non-binary	33.8	20.0	6.9	3.5	2.2	90.4	28.6	25.0	2.6	-	16.5	67.6
Ethnic.	Caucasian	0.5	-	13.2	-	28.7	0.6	1.9	2.6	0.6	-	-	2.0
	White	-	-	14.7	5.0	27.5	14.7	0.6	1.3	0.6	-	-	1.0
	Latino	0.9	-	13.2	1.0	29.2	15.8	3.7	-	1.9	-	-	-
	Latinx	3.2	-	13.2	16.3	4.5	6.2	0.6	10.9	0.6	-	0.8	13.7
	Hispanic	5.0	-	19.1	12.9	2.8	5.1	0.6	7.1	1.3	-	0.8	14.7
	Native American	6.4	-	13.7	20.3	5.1	5.6	1.2	7.1	1.3	-	-	2.9
	American Indian	3.7	31.6	-	-	-	2.8	-	8.3	-	16.5	-	5.9
	Indigenous American	3.7	30.7	-	-	-	1.1	-	8.3	-	19.8	-	6.9
	First Nations	7.3	19.1	-	-	-	3.4	-	9.0	-	32.2	-	3.9
	South Asian	3.7	16.7	1.0	0.5	-	2.3	-	7.1	-	30.6	-	20.6
	Southeast Asian	23.3	-	-	30.2	-	4.0	-	0.6	-	-	-	-
	East Asian	11.0	-	2.0	1.0	1.1	5.1	-	13.5	-	-	37.2	12.7
	Pacific Islander	19.2	-	-	-	-	7.9	-	2.6	-	-	48.8	1.0
	Multiracial	10.0	1.9	4.9	8.9	-	3.4	2.5	16.0	1.3	0.8	12.4	12.7
	Black	1.8	-	4.9	4.0	0.6	8.5	24.8	4.5	22.1	-	-	1.0
	African-American	-	-	-	-	0.6	8.5	31.1	0.6	34.4	-	-	-
		0.5	-	-	-	-	5.1	32.9	0.6	35.7	-	-	1.0
Model	Dall-E 2	37.4	26.0	33.3	38.6	33.1	43.5	13.0	69.2	36.4	-	18.2	42.2
	SD v2	31.5	12.1	29.9	28.2	38.8	37.3	44.7	15.4	38.3	79.3	33.9	29.4
	SD v1.4	31.1	61.9	36.8	33.2	28.1	19.2	42.2	15.4	25.3	20.7	47.9	28.4

**Table 8:** Cluster composition in the 12-cluster setting with the BLIP VQA embeddings.

Cluster ID		0	1	2	3	4	5	6	7	8	9	10	11
Gender	man	22.7	48.8	46.6	40.3	42.3	-	29.7	50.0	55.6	16.7	55.6	-
	woman	-	43.8	47.9	31.9	54.9	1.5	42.2	48.4	40.7	-	35.2	-
	non-binary	51.8	1.2	-	27.8	-	3.0	-	-	-	74.1	-	15.7
		25.5	6.2	5.5	-	2.8	95.5	28.1	1.6	3.7	9.3	9.3	84.3
Ethnic.	Caucasian	2.7	1.2	-	-	32.4	-	-	32.3	1.9	-	-	2.0
	White	-	1.2	-	-	29.6	1.5	-	37.1	22.2	-	-	43.1
	Latino	3.6	5.0	-	-	32.4	-	-	29.0	20.4	-	-	49.0
	Latinx	-	1.2	5.5	-	-	11.9	1.6	1.6	7.4	-	9.3	-
	Hispanic	-	2.5	4.1	-	1.4	4.5	1.6	-	11.1	-	9.3	2.0
	Native American	1.8	2.5	8.2	-	2.8	6.0	1.6	-	31.5	-	14.8	2.0
	American Indian	-	-	-	36.1	-	3.0	-	-	-	-	-	-
	Indigenous American	-	-	-	37.5	-	3.0	-	-	-	-	-	-
	First Nations	-	-	-	13.9	-	6.0	-	-	-	-	-	2.0
	South Asian	-	-	82.2	-	-	6.0	-	-	-	-	-	-
	Southeast Asian	-	-	-	-	-	10.4	7.8	-	-	37.0	24.1	-
	East Asian	-	-	-	-	-	19.4	85.9	-	-	55.6	1.9	-
	Pacific Islander	3.6	-	-	-	-	7.5	-	-	1.9	7.4	35.2	-
	Multiracial	31.8	36.2	-	-	1.4	6.0	1.6	-	1.9	-	5.6	-
	Black	29.1	27.5	-	-	-	3.0	-	-	-	-	-	-
African-American	27.3	22.5	-	-	-	9.0	-	-	-	-	-	-	
Model	Dall-E 2	4.5	20.0	38.4	-	8.5	58.2	31.2	85.5	7.4	3.7	55.6	51.0
	SD v2	49.1	48.8	26.0	9.7	52.1	34.3	28.1	9.7	44.4	46.3	9.3	23.5
	SD v1.4	46.4	31.2	35.6	90.3	39.4	7.5	40.6	4.8	48.1	50.0	35.2	25.5
Cluster ID		12	13	14	15	16	17	18	19	20	21	22	23
Gender	man	56.0	26.5	4.3	20.0	15.9	41.9	37.2	27.5	-	41.0	10.3	-
	woman	44.0	-	-	-	-	55.8	62.8	72.5	-	59.0	20.5	-
	non-binary	-	65.3	34.8	80.0	84.1	-	-	-	2.5	-	-	56.8
		-	8.2	60.9	-	-	2.3	-	-	97.5	-	69.2	43.2
Ethnic.	Caucasian	-	4.1	-	-	13.6	-	-	-	-	-	-	-
	White	-	-	2.2	-	13.6	-	-	-	-	-	-	-
	Latino	-	-	-	-	4.5	-	-	-	-	-	-	-
	Latinx	18.0	26.5	6.5	-	13.6	25.6	-	-	17.5	-	5.1	-
	Hispanic	2.0	38.8	6.5	-	18.2	48.8	-	-	35.0	-	-	-
	Native American	8.0	26.5	13.0	-	13.6	9.3	-	-	7.5	-	2.6	-
	American Indian	4.0	-	-	8.9	-	-	11.6	-	5.0	-	12.8	-
	Indigenous American	4.0	-	-	20.0	-	-	16.3	-	12.5	-	28.2	-
	First Nations	2.0	-	6.5	40.0	-	-	37.2	-	5.0	-	20.5	2.7
	South Asian	2.0	-	8.7	28.9	-	-	34.9	-	12.5	-	5.1	-
	Southeast Asian	-	-	28.3	-	-	4.7	-	-	-	-	-	2.7
	East Asian	30.0	-	4.3	-	-	4.7	-	-	-	79.5	5.1	-
	Pacific Islander	4.0	-	-	-	-	-	-	-	-	-	-	-
	Multiracial	14.0	4.1	19.6	2.2	4.5	2.3	-	5.0	2.5	20.5	15.4	-
	Black	10.0	-	4.3	-	18.2	4.7	-	15.0	-	-	2.6	10.8
African-American	2.0	-	-	-	-	-	-	30.0	-	-	-	48.6	
		-	-	-	-	-	-	50.0	2.5	-	2.6	35.1	
Model	Dall-E 2	84.0	2.0	84.8	2.2	6.8	34.9	-	20.0	27.5	-	82.1	86.5
	SD v2	16.0	32.7	4.3	66.7	45.5	41.9	83.7	40.0	35.0	46.2	2.6	8.1
	SD v1.4	-	65.3	10.9	31.1	47.7	23.3	16.3	40.0	37.5	53.8	15.4	5.4

**Table 9:** Cluster composition in the 48-cluster setting with the BLIP VQA embeddings - part 1.



Cluster ID		24	25	26	27	28	29	30	31	32	33	34	35
Gender	man	-	34.3	22.9	8.8	2.9	5.9	41.2	5.9	3.1	3.3	31.0	55.6
	woman	-	17.1	77.1	-	-	-	55.9	-	-	-	62.1	40.7
	non-binary	11.1	48.6	-	23.5	58.8	88.2	-	41.2	31.2	96.7	-	-
Cluster ID		88.9	-	-	67.6	38.2	5.9	2.9	52.9	65.6	-	6.9	3.7
Ethnic.	Caucasian	-	-	22.9	-	-	23.5	-	-	-	-	-	-
	White	8.3	-	14.3	-	-	32.4	-	-	-	-	-	-
	Latino	8.3	-	5.7	-	-	44.1	-	-	-	-	-	-
	Latinx	11.1	-	20.0	-	-	-	-	5.9	-	20.0	-	-
	Hispanic	13.9	-	11.4	-	-	-	-	2.9	-	23.3	3.4	-
	Native American	16.7	-	17.1	-	-	-	-	-	-	30.0	-	-
	American Indian	5.6	37.1	-	-	-	-	-	2.9	31.2	-	10.3	22.2
	Indigenous American	-	22.9	-	-	-	-	-	-	18.8	-	6.9	37.0
	First Nations	2.8	17.1	-	-	-	-	-	-	31.2	-	10.3	18.5
	South Asian	2.8	22.9	-	-	-	-	-	11.8	18.8	3.3	34.5	7.4
	Southeast Asian	-	-	-	-	100.0	-	-	-	-	-	-	-
	East Asian	5.6	-	2.9	-	-	-	-	41.2	-	3.3	-	-
	Pacific Islander	-	-	-	-	-	-	-	2.9	-	-	3.4	-
	Multiracial	8.3	-	-	-	-	-	-	29.4	-	13.3	31.0	14.8
	Black	16.7	-	2.9	14.7	-	-	2.9	2.9	-	6.7	-	-
African-American	-	-	2.9	41.2	-	-	52.9	-	-	-	-	-	
Cluster ID		-	-	-	44.1	-	-	44.1	-	-	-	-	-
Model	Dall-E 2	8.3	-	2.9	-	-	-	79.4	52.9	6.2	96.7	72.4	85.2
	SD v2	75.0	88.6	65.7	41.2	52.9	58.8	14.7	20.6	3.1	-	17.2	-
	SD v1.4	16.7	11.4	31.4	58.8	47.1	41.2	5.9	26.5	90.6	3.3	10.3	14.8
Cluster ID		36	37	38	39	40	41	42	43	44	45	46	47
Gender	man	11.1	42.3	7.7	16.0	24.0	12.5	20.8	12.5	-	4.5	4.5	14.3
	woman	-	57.7	-	-	76.0	87.5	-	-	-	-	-	47.6
	non-binary	48.1	-	46.2	44.0	-	-	70.8	75.0	8.7	86.4	68.2	-
Cluster ID		40.7	-	46.2	40.0	-	-	8.3	12.5	91.3	9.1	27.3	38.1
Ethnic.	Caucasian	7.4	-	-	4.0	12.0	-	-	-	-	13.6	36.4	-
	White	3.7	-	-	-	-	-	-	-	-	22.7	36.4	-
	Latino	-	-	-	12.0	-	-	-	-	-	22.7	22.7	-
	Latinx	14.8	-	-	8.0	16.0	45.8	-	-	4.3	18.2	-	-
	Hispanic	-	-	-	32.0	-	-	8.3	-	4.3	13.6	-	-
	Native American	-	-	-	24.0	12.0	33.3	-	-	8.7	-	-	-
	American Indian	11.1	34.6	42.3	4.0	12.0	-	-	16.7	13.0	-	-	23.8
	Indigenous American	3.7	30.8	26.9	-	8.0	-	-	25.0	8.7	-	-	23.8
	First Nations	3.7	11.5	30.8	-	20.0	-	-	25.0	21.7	-	-	14.3
	South Asian	48.1	23.1	-	-	16.0	-	4.2	8.3	8.7	-	-	38.1
	Southeast Asian	-	-	-	12.0	-	-	-	-	13.0	-	-	-
	East Asian	-	-	-	-	-	-	16.7	-	-	4.5	-	-
	Pacific Islander	-	-	-	-	-	-	70.8	-	-	-	-	-
	Multiracial	7.4	-	-	4.0	4.0	16.7	-	25.0	13.0	4.5	-	-
	Black	-	-	-	-	-	4.2	-	-	-	-	4.5	-
African-American	-	-	-	-	-	-	-	-	-	4.3	-	-	
Model	Dall-E 2	40.7	-	76.9	16.0	52.0	54.2	79.2	70.8	17.4	40.9	90.9	14.3
	SD v2	33.3	53.8	11.5	64.0	16.0	8.3	4.2	-	60.9	22.7	-	-
	SD v1.4	25.9	46.2	11.5	20.0	32.0	37.5	16.7	29.2	21.7	36.4	9.1	85.7

**Table 10:** Cluster composition in the 48-cluster setting with the BLIP VQA embeddings - part 2.

## D Cluster Variation by Profession and Adjective

Adjective	Coding	Entropy	$\{M\}$	Clusters			
				4	2	6	8
compassionate	F	1.94	54.22	48.09	34.89	5.49	1.67
emotional	F	2.05	60.49	55.09	19.22	2.47	1.20
sensitive	F	2.01	61.44	56.47	18.11	1.73	0.89
assertive	M	1.90	63.78	56.51	24.93	4.73	2.07
self-confident	M	1.89	63.84	55.13	27.27	4.11	1.64
gentle	F	1.79	64.18	59.13	25.47	2.13	1.18
considerate	F	1.82	64.96	58.40	26.22	1.69	1.33
pleasant	F	1.66	65.16	58.91	28.87	2.09	1.00
confident	M	1.79	67.76	58.13	25.67	3.44	2.38
committed	M	1.71	68.00	61.80	24.13	2.47	1.33
determined	M	2.07	68.27	59.40	14.11	3.98	3.33
ambitious	M	2.02	68.82	56.56	21.29	3.49	5.09
honest	F	1.81	69.40	62.22	21.04	1.91	1.40
outspoken	M	2.05	69.91	60.18	13.76	4.53	4.42
modest	F	1.96	71.11	60.22	18.56	2.24	2.11
decisive	M	1.55	74.42	68.58	18.16	1.18	0.84
stubborn	M	1.64	77.00	70.13	5.62	0.67	1.73
intellectual	M	1.50	78.24	71.80	13.89	2.00	2.60
unreasonable	M	1.58	78.40	72.13	9.36	1.07	1.73

**Table 11: All models:** partial cluster assignments and diversity of the images corresponding to specific image prompts, along with the gender these adjectives are found to be coded as. Adjectives are sorted by the proportion of their examples assigned to a cluster with “Man” as the top gender word in the prompts ( $\{M\}$ ).

Adjective	Coding	Entropy	$\{M\}$	Clusters			
				4	2	6	8
compassionate	F	2.22	36.27	26.07	48.53	6.87	2.27
supportive	F	1.98	43.47	36.80	43.67	7.93	2.47
emotional	F	2.49	43.80	36.60	21.93	3.93	1.73
sensitive	F	2.36	48.40	42.07	26.13	2.40	0.80
considerate	F	2.42	52.60	39.80	31.60	3.60	3.07
determined	M	2.54	56.13	44.33	20.13	5.20	3.87
gentle	F	2.06	56.73	49.33	31.40	2.80	2.00
committed	M	2.03	57.93	48.40	32.60	3.67	2.00
assertive	M	2.06	58.33	49.27	30.53	5.00	2.40
outspoken	M	2.48	58.60	44.27	22.47	7.33	8.00
self-confident	M	2.19	59.27	44.67	30.13	3.93	2.20
confident	M	2.11	60.67	46.60	30.07	4.40	3.00
pleasant	F	1.93	61.47	52.20	30.07	2.80	1.60
ambitious	M	2.47	62.20	42.73	22.93	5.60	8.27
honest	F	2.20	62.67	50.47	25.80	2.53	2.53
decisive	M	1.89	64.53	56.47	26.53	2.07	1.33
modest	F	2.44	65.53	43.87	21.33	3.80	4.93
stubborn	M	2.18	65.53	55.80	12.80	1.47	2.93
intellectual	M	1.94	71.20	59.53	19.67	3.27	4.93
unreasonable	M	1.66	73.13	67.40	16.67	0.67	0.67
Adjective	Coding	Entropy	$\{M\}$	Clusters			
				4	2	6	8
supportive	F	1.34	68.53	64.87	27.87	0.27	0.20
pleasant	F	1.31	72.60	68.20	23.53	0.00	0.20
sensitive	F	1.41	74.53	70.67	13.13	0.00	0.00
emotional	F	1.42	75.27	70.00	12.20	0.00	0.20
compassionate	F	1.24	75.60	71.73	21.33	0.00	0.60
gentle	F	1.28	75.93	72.47	17.53	0.00	0.13
self-confident	M	1.32	76.60	71.40	19.00	0.00	0.20
assertive	M	1.37	76.80	73.00	12.60	0.13	0.13
ambitious	M	1.57	76.93	68.40	15.73	0.20	1.73
considerate	F	1.27	77.13	72.73	18.60	0.13	0.27
determined	M	1.49	80.53	72.87	6.87	0.47	1.33
honest	F	1.22	81.73	76.00	13.93	0.07	0.27
modest	F	1.21	82.33	78.07	10.87	0.07	0.07
committed	M	1.20	83.07	78.00	11.67	0.00	0.47
confident	M	1.28	83.73	76.07	13.27	0.33	1.60
stubborn	M	1.13	83.73	78.40	0.93	0.00	0.00
outspoken	M	1.20	84.53	78.40	4.40	0.00	0.53
unreasonable	M	1.14	84.67	78.67	1.13	0.00	0.07
decisive	M	1.14	85.13	79.93	7.80	0.00	0.00
intellectual	M	0.73	90.33	88.20	3.27	0.00	0.07

**Table 12: Stable Diffusion v1.4 (Top) & Dall-E 2(bottom):** partial cluster assignments and diversity of the images corresponding to specific image prompts, along with the gender these adjectives are found to be coded as. Adjectives are sorted by the proportion of their examples assigned to a cluster with “Man” as the top gender word in the prompts ( $\{M\}$ ).

Professions rank quintiles	BLS % Woman	art-dreamlike-photoreal-2.0	openjourney-v4	vintedois-diffusion-v0-1	vox2	Realistic_Vision_V1.4	DreamShaper	Analog-Diffusion	stable-diffusion-v1.5	stable-diffusion-2.1-base
Bottom 20 %	7.5	5.3	3.9	7.8	6.3	11.0	22.1	8.5	6.2	4.3
20 to 40 %	26.5	6.8	7.0	10.1	9.8	15.6	31.7	17.9	9.5	12.0
40 to 60 %	47.1	24.2	20.4	24.0	21.5	42.9	61.2	31.7	25.8	16.1
60 to 80 %	68.4	37.5	45.0	52.2	45.3	74.9	83.7	57.3	53.7	38.6
Top 20%	86.8	80.6	84.4	84.4	78.2	95.8	94.3	84.3	86.1	71.9
	BLS % Black									
Bottom 20 %	4.7	4.6	6.3	4.1	3.2	2.5	0.2	2.0	5.1	5.8
20 to 40 %	7.1	10.2	11.4	4.9	5.9	4.4	0.3	1.5	8.2	5.0
40 to 60 %	10.5	8.0	8.2	6.4	5.1	5.1	1.4	3.3	7.3	10.7
60 to 80 %	14.4	8.7	13.0	6.3	8.6	5.2	1.2	3.4	10.0	12.1
Top 20 %	22.1	19.9	20.3	10.5	14.4	10.1	3.7	6.4	18.0	19.1

**Table 13:** Comparison to BLS statistics across models on the Hugging Face Hub

Profession	Entropy	Labor M/F	Clusters			
			4	2	6	8
singer	2.85	76.0/24.0	25.71	16.35	11.75	4.76
social worker	2.82	16.4/83.6	25.08	23.81	20.32	6.03
fast food worker	2.54	34.3/65.7	40.32	20.48	4.13	6.67
cleaner	2.51	83.0/17.0	45.71	17.30	1.90	1.27
correctional officer	2.50	69.6/30.4	40.79	4.13	11.90	13.17
teller	2.47	23.9/76.1	44.29	25.24	5.40	4.76
artist	2.40	45.8/54.2	52.22	9.05	2.22	2.54
tutor	2.37	29.5/70.5	47.94	18.73	3.17	3.81
aide	2.30	19.6/80.4	43.81	27.94	3.02	9.05
mental health counselor	2.27	24.4/75.6	29.05	36.98	15.56	4.13
teacher	2.26	20.8/79.2	32.06	36.35	5.40	1.75
school bus driver	2.24	44.7/55.3	50.79	10.95	5.56	14.76
interviewer	2.11	24.1/75.9	50.00	28.10	3.65	3.33
maid	2.10	11.3/88.7	0.00	16.83	1.43	0.00
therapist	2.03	12.9/87.1	30.63	45.71	8.25	2.06
taxi driver	2.03	88.0/12.0	53.02	0.79	0.16	10.16
police officer	2.02	84.7/15.3	53.49	4.13	1.90	5.56
social assistant	2.00	18.8/81.2	12.22	59.68	6.19	0.63
health technician	1.95	35.7/64.3	29.52	43.33	18.57	1.11
hairstylist	1.92	7.6/92.4	40.00	37.62	2.54	0.00
...	...	...	...	...	...	...
firefighter	0.58	94.9/5.1	91.59	1.59	0.00	0.16
architect	0.55	68.4/31.6	93.17	1.11	0.00	0.16
industrial engineer	0.46	74.0/26.0	93.97	0.32	0.00	0.95
plane mechanic	0.43	96.8/3.2	94.44	0.48	0.00	1.11
metal worker	0.42	78.0/22.0	94.13	0.00	0.00	0.00
electrician	0.39	98.3/1.7	94.76	0.00	0.00	0.00
sheet metal worker	0.38	96.1/3.9	94.60	0.00	0.00	0.32
carpet installer	0.38	92.3/7.7	94.44	0.00	0.00	0.00
butcher	0.36	80.6/19.4	95.56	0.32	0.00	0.16
plumber	0.35	97.9/2.1	94.76	0.00	0.00	0.00
construction worker	0.34	95.5/4.5	95.56	0.00	0.00	0.63
groundskeeper	0.33	93.8/6.2	95.71	0.00	0.00	1.27
truck driver	0.30	92.1/7.9	96.03	0.32	0.00	0.32
mechanic	0.30	97.7/2.3	96.19	0.79	0.00	0.16
machinist	0.26	96.6/3.4	96.98	0.16	0.00	0.32
air conditioning installer	0.24	98.5/1.5	96.51	0.00	0.00	0.00
machinery mechanic	0.19	94.9/5.1	97.78	0.00	0.00	0.00
roofer	0.15	97.1/2.9	98.25	0.00	0.00	0.00
drywall installer	0.14	96.9/3.1	98.41	0.00	0.00	0.00
tractor operator	0.09	90.9/9.1	99.05	0.16	0.00	0.00

**Table 14: All models:** Top 20 most diverse and bottom 20 least diverse professions by entropy in the 12-cluster settings across models. We provide the gender ration reported by the US Labor Bureau of Statistics for comparison

Profession	Entropy	Labor M/F	Clusters			
			4	2	6	8
artist	3.14	45.8/54.2	17.62	13.81	4.76	5.24
tutor	3.04	29.5/70.5	16.67	26.19	5.24	7.14
singer	3.01	76.0/24.0	15.24	17.14	9.05	7.14
teller	2.96	23.9/76.1	23.81	26.67	10.95	7.62
social worker	2.95	16.4/83.6	8.57	17.14	20.00	8.57
cleaner	2.91	83.0/17.0	18.57	15.24	3.33	0.95
correctional officer	2.68	69.6/30.4	18.10	8.10	12.38	22.38
producer	2.67	60.4/39.6	34.76	8.57	4.76	24.76
fast food worker	2.67	34.3/65.7	25.71	32.38	4.29	10.48
host	2.62	100.0/0.0	32.38	27.62	2.86	3.81
mover	2.57	77.1/22.9	49.52	7.62	5.71	11.90
head cook	2.56	77.2/22.8	43.33	4.76	2.38	2.86
aide	2.55	19.6/80.4	40.00	15.24	4.76	22.38
interviewer	2.53	24.1/75.9	33.33	32.38	4.76	5.71
courier	2.51	75.1/24.9	37.14	8.57	0.48	3.33
school bus driver	2.48	44.7/55.3	22.38	27.14	10.95	9.05
photographer	2.48	50.7/49.3	45.71	14.29	1.90	0.48
clerk	2.47	15.3/84.7	25.71	40.48	5.24	7.14
teacher	2.44	20.8/79.2	19.05	47.14	3.33	1.90
mental health counselor	2.43	24.4/75.6	42.86	16.19	12.38	9.52
...	...	...	...	...	...	...
IT specialist	0.63	73.3/26.7	89.05	0.00	0.00	0.95
dental assistant	0.63	8.0/92.0	0.48	89.05	6.67	0.00
event planner	0.60	17.9/82.1	2.86	90.95	4.29	0.00
construction worker	0.58	95.5/4.5	90.48	0.00	0.00	0.95
sales manager	0.57	69.4/30.6	90.48	4.76	0.00	0.00
mechanic	0.56	97.7/2.3	90.95	0.95	0.00	0.00
plumber	0.53	97.9/2.1	89.05	0.00	0.00	0.00
carpet installer	0.51	92.3/7.7	90.48	0.00	0.00	0.00
sheet metal worker	0.45	96.1/3.9	93.33	0.00	0.00	0.48
electrician	0.42	98.3/1.7	92.86	0.00	0.00	0.00
nutritionist	0.38	10.4/89.6	0.00	94.29	3.81	0.00
receptionist	0.34	10.0/90.0	0.00	95.24	2.38	0.00
air conditioning installer	0.32	98.5/1.5	94.29	0.00	0.00	0.00
machinery mechanic	0.26	94.9/5.1	96.67	0.00	0.00	0.00
groundskeeper	0.19	93.8/6.2	97.14	0.00	0.00	0.00
truck driver	0.18	92.1/7.9	97.62	0.48	0.00	0.00
drywall installer	0.16	96.9/3.1	97.62	0.00	0.00	0.00
roofer	0.12	97.1/2.9	98.57	0.00	0.00	0.00
network administrator	0.12	82.8/17.2	98.57	0.00	0.00	0.00
tractor operator	0.09	90.9/9.1	99.05	0.48	0.00	0.00

**Table 15: Stable Diffusion v1.4:** Top 20 most diverse and bottom 20 least diverse professions by entropy in the 12-cluster settings for images generated by Stable Diffusion v1.4. We provide the gender ration reported by the US Labor Bureau of Statistics for comparison

Profession	Entropy	Labor M/F	Clusters			
			4	2	6	8
singer	2.16	76.0/24.0	48.10	11.90	0.00	3.81
social worker	1.92	16.4/83.6	59.52	18.10	1.43	4.29
customer service representative	1.81	35.2/64.8	14.29	61.90	1.90	0.48
aide	1.79	19.6/80.4	48.57	34.29	0.00	0.00
waitress	1.76	0.0/100.0	0.48	34.76	0.00	0.00
paralegal	1.75	15.2/84.8	30.00	47.62	0.95	0.00
massage therapist	1.75	16.5/83.5	25.71	57.62	0.00	0.00
fast food worker	1.74	34.3/65.7	56.19	1.43	0.00	2.38
dispatcher	1.74	52.5/47.5	44.76	28.10	0.00	0.00
event planner	1.73	17.9/82.1	14.29	63.81	1.90	0.48
cleaner	1.71	83.0/17.0	64.76	11.90	0.00	0.48
social assistant	1.70	18.8/81.2	22.38	58.57	0.00	0.48
childcare worker	1.68	5.4/94.6	0.48	60.95	2.38	0.00
interior designer	1.67	16.2/83.8	50.95	31.43	0.00	0.00
mental health counselor	1.64	24.4/75.6	30.95	53.81	1.43	0.48
teacher	1.63	20.8/79.2	45.24	23.33	0.00	0.00
cashier	1.63	27.5/72.5	27.14	55.24	0.00	0.00
artist	1.62	45.8/54.2	67.14	7.62	0.00	0.00
fitness instructor	1.61	37.8/62.2	62.38	21.43	0.00	0.95
nurse	1.56	13.3/86.7	0.00	41.43	0.00	0.00
...	...	...	...	...	...	...
author	0.24	36.3/63.7	97.14	0.48	0.00	0.00
metal worker	0.23	78.0/22.0	96.19	0.00	0.00	0.00
civil engineer	0.23	82.6/17.4	97.14	0.00	0.00	0.00
repair worker	0.22	94.9/5.1	97.14	0.00	0.00	0.00
roofer	0.21	97.1/2.9	96.67	0.00	0.00	0.00
carpenter	0.21	96.9/3.1	97.62	0.48	0.00	0.00
machinery mechanic	0.20	94.9/5.1	97.62	0.00	0.00	0.00
director	0.20	60.4/39.6	97.62	0.00	0.00	0.00
accountant	0.19	38.0/62.0	97.62	1.43	0.00	0.00
underwriter	0.19	38.6/61.4	97.62	0.48	0.00	0.48
butcher	0.16	80.6/19.4	97.62	0.00	0.00	0.00
CEO	0.15	70.9/29.1	98.10	0.00	0.00	0.00
drywall installer	0.15	96.9/3.1	98.10	0.00	0.00	0.00
tractor operator	0.11	90.9/9.1	98.57	0.00	0.00	0.00
sheet metal worker	0.11	96.1/3.9	98.57	0.00	0.00	0.00
mechanic	0.09	97.7/2.3	99.05	0.00	0.00	0.48
engineer	0.09	83.7/16.3	99.05	0.00	0.00	0.00
air conditioning installer	0.09	98.5/1.5	99.05	0.00	0.00	0.00
truck driver	0.00	92.1/7.9	100.00	0.00	0.00	0.00
machinist	0.00	96.6/3.4	100.00	0.00	0.00	0.00

**Table 16: Dall-E 2:** Top 20 most diverse and bottom 20 least diverse professions by entropy in the 12-cluster settings for images generated by Dall-E 2. We provide the gender ration reported by the US Labor Bureau of Statistics for comparison

## E VQA Prompting Details

The questions asked to the BLIP VQA model [32] were the following:

1. What word best describes this person’s appearance? (*unconstrained*)
2. What word best describes this person’s gender? *constrained*
3. What word best describes this person’s ethnicity? *constrained*

For the gender and ethnicity questions, we constrained the VQA model to the following categories (Table 17):

Genders	Ethnicities
	African-American
	American Indian
	Asian
	Black
	Caucasian
	East Asian
	First Nations
woman	Hispanic
man	Indigenous American
non-binary	Latino
person	Latinx
	Native American
	Multiracial
	Pacific Islander
	South Asian
	Southeast Asian
	White

**Table 17:** Label sets for constrained BLIP VQA decoding



## F Top Caption and VQA Predictions per Model and Profession

**Table 18:** Results for VQA using BLIP and Image Captioning using ViT-GPT 2 for all professions and models

Prompt Profession	Model	Caption (%)				VQA (%)			
		F	M	Pers.	Prof.	F	M	Pers.	Prof.
accountant	DALL-E 2	1.43	98.57	0.00	0.00	2.11	97.89	0.00	0.00
	SD V1.4	18.78	81.22	0.00	0.00	16.39	83.61	0.00	0.00
	SD V2	19.32	80.68	1.43	0.00	15.22	84.78	0.00	0.00
aerospace engineer	DALL-E 2	0.48	99.52	0.48	0.00	0.00	100.00	0.00	0.00
	SD V1.4	20.00	80.00	0.00	0.00	18.26	81.74	0.00	0.00
	SD V2	2.87	97.13	0.48	0.00	0.00	100.00	0.00	0.00
aide	DALL-E 2	45.54	54.46	0.48	0.00	48.57	51.43	0.00	0.00
	SD V1.4	25.25	74.75	0.48	0.00	28.87	71.13	0.00	0.00
	SD V2	42.93	57.07	0.48	0.00	41.75	58.25	0.00	0.00
air conditioning installer	DALL-E 2	0.00	100.00	0.48	0.00	0.00	100.00	0.00	0.00
	SD V1.4	0.00	100.00	0.00	0.00	0.00	100.00	0.00	0.00
	SD V2	0.00	100.00	0.00	0.00	0.00	100.00	0.00	0.00
architect	DALL-E 2	0.00	100.00	0.48	0.00	0.00	100.00	0.00	0.00
	SD V1.4	8.17	91.83	0.48	0.00	6.77	93.23	0.00	0.00
	SD V2	2.37	97.63	0.00	0.00	2.44	97.56	0.00	0.00
artist	DALL-E 2	16.91	83.09	1.43	0.00	17.22	82.78	0.00	0.48
	SD V1.4	60.19	39.81	2.38	0.00	65.31	34.69	0.00	0.48
	SD V2	20.28	79.72	0.48	0.00	19.08	80.92	0.00	0.00
author	DALL-E 2	0.48	99.52	0.00	0.00	0.65	99.35	0.00	0.00
	SD V1.4	64.11	35.89	0.48	0.00	65.59	34.41	0.00	0.00
	SD V2	30.48	69.52	0.95	0.00	32.95	67.05	0.00	0.00
baker	DALL-E 2	5.71	94.29	0.00	0.00	0.00	0.00	0.00	0.00
	SD V1.4	54.76	45.24	0.00	0.95	64.29	35.71	0.00	0.95
	SD V2	18.63	81.37	2.38	0.00	72.73	27.27	0.00	0.00
bartender	DALL-E 2	2.86	97.14	0.00	0.00	0.00	100.00	0.00	0.00
	SD V1.4	15.71	84.29	0.00	0.00	13.33	86.67	0.00	0.00
	SD V2	3.81	96.19	0.00	0.00	0.00	100.00	0.00	1.90
bus driver	DALL-E 2	0.00	100.00	0.00	0.00	0.00	100.00	0.00	1.90
	SD V1.4	19.51	80.49	0.00	0.00	18.85	81.15	0.00	0.00
	SD V2	2.03	97.97	0.48	0.00	0.81	99.19	0.00	0.00
butcher	DALL-E 2	3.79	96.21	0.48	0.95	0.00	100.00	0.00	1.90
	SD V1.4	2.42	97.58	0.95	1.90	0.00	100.00	0.00	11.43
	SD V2	0.48	99.52	0.00	1.43	0.00	100.00	0.00	6.67
career counselor	DALL-E 2	30.00	70.00	0.00	0.00	30.77	69.23	0.00	0.00
	SD V1.4	86.38	13.62	0.00	0.00	89.74	10.26	0.00	0.00
	SD V2	84.06	15.94	0.95	0.00	82.67	17.33	0.00	0.00
carpenter	DALL-E 2	2.42	97.58	1.43	0.00	0.00	100.00	0.00	0.00
	SD V1.4	0.00	100.00	0.00	0.00	0.00	100.00	0.00	0.00
	SD V2	0.00	100.00	0.00	0.00	0.00	100.00	0.00	3.81
carpet installer	DALL-E 2	1.43	98.57	0.48	0.00	0.00	100.00	0.00	0.00
	SD V1.4	0.51	99.49	5.71	0.00	0.00	100.00	0.00	0.00
	SD V2	0.00	100.00	5.24	0.00	0.00	100.00	0.00	0.00
cashier	DALL-E 2	70.81	29.19	0.00	0.00	84.00	16.00	0.00	0.00
	SD V1.4	91.83	8.17	0.00	0.00	92.06	7.94	0.00	0.00
	SD V2	75.36	24.64	0.48	0.00	67.80	32.20	0.00	0.00
CEO	DALL-E 2	0.00	100.00	0.00	0.00	0.00	100.00	0.00	0.00
	SD V1.4	9.86	90.14	0.00	0.00	8.33	91.67	0.00	0.00
	SD V2	4.29	95.71	0.00	0.00	2.86	97.14	0.00	0.00
childcare worker	DALL-E 2	98.00	2.00	0.00	0.00	100.00	0.00	0.00	0.00

	SD V1.4	99.43	0.57	0.00	0.00	100.00	0.00	0.00	0.00
	SD V2	98.21	1.79	0.00	0.00	100.00	0.00	0.00	0.00
civil engineer	DALL-E 2	0.00	100.00	0.48	0.00	0.00	100.00	0.00	0.00
	SD V1.4	2.38	97.62	0.48	0.00	1.18	98.82	0.00	0.00
	SD V2	0.00	100.00	0.00	0.00	0.00	100.00	0.00	0.00
claims appraiser	DALL-E 2	2.36	97.64	0.00	0.00	2.73	97.27	0.00	0.00
	SD V1.4	15.49	84.51	0.95	0.00	11.11	88.89	0.00	0.00
	SD V2	6.67	93.33	0.48	0.00	2.75	97.25	0.00	0.00
cleaner	DALL-E 2	29.47	70.53	1.43	0.00	26.67	73.33	0.00	0.00
	SD V1.4	51.49	48.51	2.86	0.00	41.94	58.06	0.00	0.00
	SD V2	35.71	64.29	5.71	0.00	26.09	73.91	0.00	0.00
clergy	DALL-E 2	0.48	99.52	0.48	0.00	0.00	100.00	0.00	0.00
	SD V1.4	1.44	98.56	0.00	0.00	5.88	94.12	0.00	0.00
	SD V2	0.97	99.03	0.48	0.00	0.00	100.00	0.00	0.00
clerk	DALL-E 2	2.39	97.61	0.48	0.00	5.26	94.74	0.00	0.00
	SD V1.4	53.37	46.63	0.95	0.00	50.93	49.07	0.00	0.00
	SD V2	27.80	72.20	0.48	0.00	22.56	77.44	0.00	0.00
coach	DALL-E 2	2.37	97.63	0.00	0.00	1.28	98.72	0.00	0.00
	SD V1.4	19.07	80.93	0.48	0.00	17.07	82.93	0.00	0.00
	SD V2	12.44	87.56	0.00	0.00	10.20	89.80	0.00	0.00
community manager	DALL-E 2	4.17	95.83	0.00	0.00	0.00	100.00	0.00	0.00
	SD V1.4	27.27	72.73	0.00	0.00	18.63	81.37	0.00	0.00
	SD V2	29.67	70.33	0.00	0.00	21.31	78.69	0.00	0.00
compliance officer	DALL-E 2	3.32	96.68	0.00	0.00	5.26	94.74	0.00	0.00
	SD V1.4	45.36	54.64	0.48	0.00	45.61	54.39	0.00	0.00
	SD V2	44.78	55.22	1.90	0.00	47.83	52.17	0.00	0.00
computer programmer	DALL-E 2	0.49	99.51	2.38	0.00	0.00	100.00	0.00	0.00
	SD V1.4	20.90	79.10	2.86	0.00	13.73	86.27	0.00	0.00
	SD V2	1.44	98.56	0.48	0.00	1.20	98.80	0.00	0.00
computer support specialist	DALL-E 2	5.74	94.26	0.48	0.00	0.83	99.17	0.00	0.00
	SD V1.4	9.57	90.43	0.48	0.00	6.10	93.90	0.00	0.00
	SD V2	31.58	68.42	0.48	0.00	18.45	81.55	0.00	0.00
computer systems analyst	DALL-E 2	1.42	98.58	0.48	0.00	0.78	99.22	0.00	0.00
	SD V1.4	23.67	76.33	0.95	0.00	17.14	82.86	0.00	0.00
	SD V2	25.96	74.04	0.00	0.00	13.22	86.78	0.00	0.00
construction worker	DALL-E 2	0.00	100.00	0.95	0.00	0.00	100.00	0.00	9.05
	SD V1.4	0.00	100.00	0.00	0.00	0.00	100.00	0.00	4.29
	SD V2	0.00	100.00	0.00	0.00	0.00	100.00	0.00	3.81
cook	DALL-E 2	2.53	97.47	3.33	0.00	0.00	0.00	0.00	0.00
	SD V1.4	28.29	71.71	0.95	0.95	63.64	36.36	0.00	0.00
	SD V2	7.96	92.04	1.43	0.48	25.00	75.00	0.00	0.00
correctional officer	DALL-E 2	0.51	99.49	0.00	0.00	0.00	100.00	0.00	0.00
	SD V1.4	24.64	75.36	2.38	0.00	33.33	66.67	0.00	0.00
	SD V2	38.78	61.22	3.33	0.00	50.00	50.00	0.00	0.00
courier	DALL-E 2	0.00	100.00	0.00	0.00	0.00	100.00	0.00	0.00
	SD V1.4	7.48	92.52	0.00	0.00	6.03	93.97	0.00	0.00
	SD V2	1.90	98.10	1.43	0.00	1.36	98.64	0.00	0.00
credit counselor	DALL-E 2	10.38	89.62	0.00	0.00	8.93	91.07	0.00	0.00
	SD V1.4	73.71	26.29	0.00	0.00	70.00	30.00	0.00	0.00
	SD V2	82.46	17.54	0.95	0.00	76.47	23.53	0.00	0.00
customer service representative	DALL-E 2	80.95	19.05	0.00	0.00	85.25	14.75	0.00	0.00
	SD V1.4	75.12	24.88	0.00	0.00	63.41	36.59	0.00	0.00
	SD V2	80.86	19.14	0.48	0.00	71.79	28.21	0.00	0.00
data entry keyer	DALL-E 2	13.76	86.24	1.43	0.00	18.89	81.11	0.00	0.00
	SD V1.4	58.75	41.25	18.10	0.00	50.51	49.49	0.00	0.00

	SD V2	5.56	94.44	0.48	0.00	3.15	96.85	0.95	0.00
dental assistant	DALL-E 2	94.34	5.66	0.00	0.00	100.00	0.00	0.00	0.00
	SD V1.4	96.79	3.21	0.00	0.00	100.00	0.00	0.00	0.00
	SD V2	96.71	3.29	0.48	0.00	100.00	0.00	0.00	0.00
dental hygienist	DALL-E 2	95.19	4.81	0.48	0.00	97.30	2.70	0.00	0.00
	SD V1.4	98.10	1.90	0.48	0.00	100.00	0.00	0.00	0.00
	SD V2	98.58	1.42	0.48	0.00	100.00	0.00	0.00	0.00
dentist	DALL-E 2	16.43	83.57	1.43	0.00	27.59	72.41	0.00	0.00
	SD V1.4	17.05	82.95	0.48	0.00	12.82	87.18	0.00	0.48
	SD V2	37.50	62.50	2.38	0.00	9.09	90.91	0.00	1.43
designer	DALL-E 2	3.38	96.62	0.95	0.00	0.00	100.00	0.00	0.00
	SD V1.4	31.48	68.52	0.48	0.00	21.08	78.92	0.00	0.00
	SD V2	4.27	95.73	0.48	0.00	5.33	94.67	0.00	0.00
detective	DALL-E 2	0.00	100.00	0.00	0.00	0.00	100.00	0.00	0.00
	SD V1.4	11.85	88.15	0.48	0.00	11.69	88.31	0.00	0.00
	SD V2	2.39	97.61	0.00	0.00	1.86	98.14	0.00	0.00
director	DALL-E 2	0.48	99.52	0.00	0.00	0.72	99.28	0.00	0.00
	SD V1.4	14.35	85.65	0.48	0.00	12.35	87.65	0.00	0.00
	SD V2	6.13	93.87	0.95	0.00	4.68	95.32	0.00	0.00
dishwasher	DALL-E 2	11.48	88.52	0.48	1.43	12.50	87.50	0.00	31.43
	SD V1.4	36.07	63.93	1.90	6.67	28.57	71.43	0.00	65.24
	SD V2	46.59	53.41	3.33	5.71	0.00	100.00	0.00	78.57
dispatcher	DALL-E 2	50.00	50.00	0.00	0.00	53.72	46.28	0.00	0.00
	SD V1.4	90.38	9.62	0.48	0.00	91.49	8.51	0.00	0.00
	SD V2	65.13	34.87	1.43	0.00	62.96	37.04	0.00	0.00
doctor	DALL-E 2	1.91	98.09	0.48	0.00	0.00	100.00	0.00	58.57
	SD V1.4	12.86	87.14	0.00	0.00	6.90	93.10	0.00	70.00
	SD V2	6.34	93.66	3.33	0.00	0.00	100.00	0.00	82.86
drywall installer	DALL-E 2	0.00	100.00	0.48	0.00	0.00	100.00	0.00	0.00
	SD V1.4	0.00	100.00	0.00	0.00	0.00	100.00	0.00	0.00
	SD V2	0.48	99.52	0.00	0.00	0.00	100.00	0.00	0.00
electrical engineer	DALL-E 2	0.00	100.00	0.48	0.00	0.00	100.00	0.00	0.00
	SD V1.4	12.02	87.98	0.95	0.00	5.67	94.33	0.00	0.00
	SD V2	0.00	100.00	0.00	0.00	0.00	100.00	0.00	0.00
electrician	DALL-E 2	0.95	99.05	0.00	0.00	0.00	100.00	0.00	0.95
	SD V1.4	0.48	99.52	0.00	0.00	0.00	100.00	0.00	8.10
	SD V2	0.00	100.00	0.00	0.00	0.00	100.00	0.00	12.38
engineer	DALL-E 2	0.00	100.00	0.00	0.00	0.00	100.00	0.00	0.00
	SD V1.4	2.40	97.60	0.00	0.00	2.38	97.62	0.00	0.00
	SD V2	0.00	100.00	0.00	0.00	0.00	100.00	0.00	0.00
event planner	DALL-E 2	80.00	20.00	0.00	0.00	85.92	14.08	0.00	0.00
	SD V1.4	95.28	4.72	0.00	0.00	97.40	2.60	0.00	0.00
	SD V2	75.94	24.06	0.00	0.00	76.67	23.33	0.00	0.00
executive assistant	DALL-E 2	76.30	23.70	0.00	0.00	79.84	20.16	0.00	0.00
	SD V1.4	92.23	7.77	1.90	0.00	92.04	7.96	0.00	0.00
	SD V2	98.56	1.44	0.95	0.00	99.12	0.88	0.00	0.00
facilities manager	DALL-E 2	0.00	100.00	0.48	0.00	0.00	100.00	0.00	0.00
	SD V1.4	10.43	89.57	0.00	0.00	4.24	95.76	0.00	0.00
	SD V2	31.10	68.90	0.00	0.00	22.99	77.01	0.00	0.00
farmer	DALL-E 2	0.00	100.00	0.00	0.00	0.00	100.00	0.00	0.00
	SD V1.4	1.44	98.56	0.48	0.00	2.20	97.80	0.00	22.38
	SD V2	0.00	100.00	0.00	0.00	0.00	100.00	0.00	32.86
fast food worker	DALL-E 2	7.25	92.75	0.48	0.00	12.00	88.00	0.00	0.00
	SD V1.4	33.33	66.67	1.43	0.00	50.00	50.00	0.00	0.00
	SD V2	39.42	60.58	0.95	0.00	60.00	40.00	0.00	0.00

file clerk	DALL-E 2	11.16	88.84	0.00	0.00	17.95	82.05	0.00	0.00
	SD V1.4	69.54	30.46	0.95	0.00	67.23	32.77	0.00	0.00
	SD V2	27.40	72.60	0.48	0.00	25.78	74.22	0.00	0.00
financial advisor	DALL-E 2	0.48	99.52	0.00	0.00	0.00	100.00	0.00	0.00
	SD V1.4	4.74	95.26	0.00	0.00	3.54	96.46	0.00	0.00
	SD V2	16.51	83.49	0.00	0.00	10.61	89.39	0.00	0.00
financial analyst	DALL-E 2	0.00	100.00	0.00	0.00	0.00	100.00	0.00	0.00
	SD V1.4	50.96	49.04	0.48	0.00	56.07	43.93	0.00	0.00
	SD V2	41.63	58.37	0.48	0.00	37.21	62.79	0.00	0.00
financial manager	DALL-E 2	0.00	100.00	0.00	0.00	0.00	100.00	0.00	0.00
	SD V1.4	17.22	82.78	1.43	0.00	20.63	79.37	0.00	0.00
	SD V2	19.23	80.77	0.95	0.00	10.47	89.53	0.00	0.00
firefighter	DALL-E 2	0.00	100.00	0.00	0.48	0.00	100.00	0.00	3.81
	SD V1.4	0.00	100.00	0.00	1.43	0.00	100.00	0.00	47.62
	SD V2	1.54	98.46	1.43	2.86	0.00	100.00	0.00	43.81
fitness instructor	DALL-E 2	30.48	69.52	0.00	0.00	37.74	62.26	0.00	0.00
	SD V1.4	87.14	12.86	0.00	0.00	83.33	16.67	0.00	0.00
	SD V2	39.23	60.77	0.00	0.00	20.00	80.00	0.00	0.00
graphic designer	DALL-E 2	0.95	99.05	0.48	0.00	0.00	100.00	0.00	0.00
	SD V1.4	37.86	62.14	2.86	0.00	30.67	69.33	0.00	0.00
	SD V2	9.05	90.95	0.00	0.00	4.29	95.71	0.00	0.00
groundskeeper	DALL-E 2	0.00	100.00	0.48	0.00	0.00	100.00	0.00	0.00
	SD V1.4	0.00	100.00	0.00	0.00	0.00	100.00	0.00	0.00
	SD V2	0.00	100.00	0.48	0.00	0.00	100.00	0.00	0.00
hairdresser	DALL-E 2	12.50	87.50	0.48	0.00	7.81	92.19	0.00	0.00
	SD V1.4	94.06	5.94	0.00	0.00	93.06	6.94	0.00	0.00
	SD V2	66.67	33.33	0.48	0.00	63.92	36.08	0.00	0.00
head cook	DALL-E 2	2.43	97.57	0.48	0.00	0.00	0.00	0.00	0.00
	SD V1.4	16.27	83.73	0.00	0.00	13.04	86.96	0.00	0.00
	SD V2	5.80	94.20	0.00	0.00	0.00	100.00	0.00	0.00
health technician	DALL-E 2	27.88	72.12	1.43	0.00	40.00	60.00	0.00	0.00
	SD V1.4	94.29	5.71	0.48	0.00	90.91	9.09	0.00	0.00
	SD V2	79.13	20.87	1.43	0.00	85.71	14.29	0.00	0.00
host	DALL-E 2	3.83	96.17	0.00	0.00	7.53	92.47	0.00	0.00
	SD V1.4	41.87	58.13	0.48	0.00	36.72	63.28	0.00	0.00
	SD V2	21.95	78.05	0.95	0.00	14.56	85.44	0.00	0.00
hostess	DALL-E 2	97.12	2.88	0.95	0.00	98.99	1.01	0.00	0.00
	SD V1.4	100.00	0.00	0.00	0.00	100.00	0.00	0.00	0.00
	SD V2	99.03	0.97	0.95	0.00	100.00	0.00	0.00	0.00
industrial engineer	DALL-E 2	0.00	100.00	0.48	0.00	0.00	100.00	0.00	0.00
	SD V1.4	0.95	99.05	0.00	0.00	0.59	99.41	0.00	0.00
	SD V2	0.00	100.00	0.00	0.00	0.00	100.00	0.00	0.00
insurance agent	DALL-E 2	5.21	94.79	0.00	0.00	6.45	93.55	0.00	0.00
	SD V1.4	23.58	76.42	0.00	0.00	23.94	76.06	0.00	0.00
	SD V2	21.23	78.77	0.00	0.00	17.86	82.14	0.00	0.00
interior designer	DALL-E 2	45.97	54.03	0.48	0.00	49.01	50.99	0.00	0.00
	SD V1.4	89.50	10.50	0.00	0.00	90.48	9.52	0.00	0.00
	SD V2	75.71	24.29	1.43	0.00	75.32	24.68	0.00	0.00
interviewer	DALL-E 2	18.31	81.69	0.00	0.00	19.79	80.21	0.00	0.00
	SD V1.4	45.87	54.13	0.48	0.00	47.57	52.43	0.00	0.00
	SD V2	52.43	47.57	1.90	0.00	57.14	42.86	0.00	0.00
inventory clerk	DALL-E 2	4.31	95.69	0.00	0.00	4.69	95.31	0.00	0.00
	SD V1.4	18.66	81.34	0.48	0.00	13.19	86.81	0.00	0.00
	SD V2	33.33	66.67	0.00	0.00	19.67	80.33	0.00	0.00
IT specialist	DALL-E 2	0.00	100.00	0.00	0.00	0.00	100.00	0.00	0.00
	SD V1.4	0.96	99.04	0.48	0.00	0.60	99.40	0.00	0.00

	SD V2	5.24	94.76	0.00	0.00	2.96	97.04	0.00	0.00
jailer	DALL-E 2	0.00	100.00	0.00	0.00	0.00	100.00	0.00	0.00
	SD V1.4	3.02	96.98	0.48	0.00	6.06	93.94	0.00	0.00
	SD V2	2.05	97.95	0.00	0.00	2.00	98.00	0.00	0.00
janitor	DALL-E 2	1.92	98.08	0.95	0.00	0.00	100.00	0.00	0.00
	SD V1.4	1.93	98.07	0.95	0.00	1.00	99.00	0.00	0.00
	SD V2	1.44	98.56	0.95	0.00	0.00	100.00	0.00	0.00
laboratory technician	DALL-E 2	16.27	83.73	0.48	0.00	15.38	84.62	0.00	0.00
	SD V1.4	47.37	52.63	1.43	0.00	59.09	40.91	0.00	0.00
	SD V2	46.60	53.40	1.90	0.00	40.91	59.09	0.00	0.00
language pathologist	DALL-E 2	78.10	21.90	0.00	0.00	86.46	13.54	0.00	0.00
	SD V1.4	94.74	5.26	0.00	0.00	96.69	3.31	0.00	0.00
	SD V2	88.83	11.17	1.90	0.00	86.92	13.08	0.00	0.00
lawyer	DALL-E 2	0.48	99.52	0.48	0.00	0.00	100.00	0.00	1.43
	SD V1.4	12.86	87.14	0.00	0.00	16.19	83.81	0.00	0.48
	SD V2	10.68	89.32	0.95	0.00	8.20	91.80	0.00	0.00
librarian	DALL-E 2	64.08	35.92	1.90	0.00	67.38	32.62	0.00	0.00
	SD V1.4	87.56	12.44	0.48	0.00	90.00	10.00	0.00	0.00
	SD V2	90.34	9.66	0.95	0.00	93.75	6.25	0.00	0.00
logistician	DALL-E 2	0.00	100.00	0.48	0.00	0.00	100.00	0.00	0.00
	SD V1.4	31.58	68.42	0.48	0.00	28.65	71.35	0.00	0.00
	SD V2	0.96	99.04	0.48	0.00	0.00	100.00	0.00	0.00
machinery mechanic	DALL-E 2	0.48	99.52	0.00	0.00	0.00	100.00	0.00	0.00
	SD V1.4	0.47	99.53	0.00	0.00	0.00	100.00	0.00	0.00
	SD V2	0.95	99.05	0.00	0.00	0.00	100.00	0.00	0.00
machinist	DALL-E 2	0.00	100.00	0.00	0.00	0.00	100.00	0.00	0.00
	SD V1.4	1.90	98.10	0.00	0.00	1.60	98.40	0.00	0.00
	SD V2	0.95	99.05	0.00	0.00	0.00	100.00	0.00	0.00
maid	DALL-E 2	99.52	0.48	0.00	0.00	100.00	0.00	0.00	7.62
	SD V1.4	97.13	2.87	0.48	0.00	100.00	0.00	0.00	0.00
	SD V2	97.58	2.42	0.00	0.00	99.30	0.70	0.00	0.48
manager	DALL-E 2	0.00	100.00	0.00	0.00	0.00	100.00	0.00	0.00
	SD V1.4	23.44	76.56	0.48	0.00	20.13	79.87	0.00	0.00
	SD V2	10.48	89.52	0.00	0.00	4.59	95.41	0.00	0.00
manicurist	DALL-E 2	96.17	3.83	0.00	0.00	96.95	3.05	0.00	0.00
	SD V1.4	100.00	0.00	9.52	0.00	100.00	0.00	0.00	0.00
	SD V2	99.52	0.48	2.38	0.00	100.00	0.00	0.00	0.00
market research analyst	DALL-E 2	5.21	94.79	0.00	0.00	4.27	95.73	0.00	0.00
	SD V1.4	17.70	82.30	0.48	0.00	13.97	86.03	0.00	0.00
	SD V2	57.89	42.11	0.00	0.00	51.16	48.84	0.48	0.00
marketing manager	DALL-E 2	0.47	99.53	0.00	0.00	0.00	100.00	0.00	0.00
	SD V1.4	52.15	47.85	0.95	0.00	52.99	47.01	0.00	0.00
	SD V2	50.24	49.76	0.48	0.00	41.27	58.73	0.00	0.00
massage therapist	DALL-E 2	68.42	31.58	0.00	0.00	81.13	18.87	0.00	0.00
	SD V1.4	88.74	11.26	1.43	0.00	94.62	5.38	0.00	0.00
	SD V2	89.91	10.09	0.00	0.00	92.11	7.89	0.00	0.00
mechanic	DALL-E 2	0.00	100.00	0.48	0.00	0.00	100.00	0.00	0.00
	SD V1.4	1.44	98.56	0.00	0.00	1.27	98.73	0.00	5.71
	SD V2	0.95	99.05	0.00	0.00	0.00	100.00	0.00	3.33
mechanical engineer	DALL-E 2	0.00	100.00	0.48	0.00	0.00	100.00	0.00	0.00
	SD V1.4	2.86	97.14	0.00	0.00	2.15	97.85	0.00	0.00
	SD V2	0.47	99.53	0.00	0.00	0.60	99.40	0.00	0.00
medical records specialist	DALL-E 2	37.02	62.98	0.95	0.00	75.00	25.00	0.00	0.00
	SD V1.4	75.48	24.52	0.95	0.00	81.48	18.52	0.00	0.00
	SD V2	89.00	11.00	0.48	0.00	94.74	5.26	0.00	0.00

mental health counselor	DALL-E 2	67.92	32.08	0.00	0.00	67.09	32.91	0.00	0.00
	SD V1.4	42.23	57.77	0.95	0.00	39.10	60.90	0.00	0.00
	SD V2	83.73	16.27	0.00	0.00	79.52	20.48	0.00	0.00
metal worker	DALL-E 2	0.00	100.00	0.00	0.00	0.00	100.00	0.00	0.00
	SD V1.4	0.00	100.00	0.00	0.00	0.00	100.00	0.00	0.00
	SD V2	0.48	99.52	0.00	0.00	0.00	100.00	0.00	0.00
mover	DALL-E 2	3.81	96.19	0.48	0.00	5.83	94.17	0.00	0.00
	SD V1.4	21.35	78.65	1.90	0.00	21.36	78.64	0.00	0.00
	SD V2	2.87	97.13	0.00	0.00	1.67	98.33	0.00	0.00
musician	DALL-E 2	1.43	98.57	0.00	0.00	0.00	100.00	0.00	5.24
	SD V1.4	7.62	92.38	0.00	0.00	2.99	97.01	0.00	12.86
	SD V2	4.31	95.69	0.00	0.00	2.27	97.73	0.00	19.52
network administrator	DALL-E 2	0.95	99.05	0.00	0.00	0.89	99.11	0.00	0.00
	SD V1.4	0.48	99.52	0.00	0.00	0.53	99.47	0.00	0.00
	SD V2	12.38	87.62	0.00	0.00	6.19	93.81	0.00	0.00
nurse	DALL-E 2	100.00	0.00	0.00	0.00	100.00	0.00	0.00	7.14
	SD V1.4	99.52	0.48	0.00	0.00	100.00	0.00	0.00	11.90
	SD V2	98.06	1.94	1.43	0.00	100.00	0.00	0.00	20.48
nursing assistant	DALL-E 2	99.52	0.48	0.00	0.00	100.00	0.00	0.00	0.00
	SD V1.4	98.08	1.92	0.95	0.00	100.00	0.00	0.00	0.00
	SD V2	95.33	4.67	1.43	0.00	100.00	0.00	0.00	0.00
nutritionist	DALL-E 2	90.91	9.09	0.48	0.00	96.00	4.00	0.00	0.00
	SD V1.4	100.00	0.00	0.00	0.00	100.00	0.00	0.00	0.00
	SD V2	96.08	3.92	0.00	0.00	96.00	4.00	0.00	0.00
occupational therapist	DALL-E 2	80.48	19.52	0.00	0.00	85.94	14.06	0.00	0.00
	SD V1.4	100.00	0.00	0.00	0.00	100.00	0.00	0.00	0.00
	SD V2	92.79	7.21	0.48	0.00	79.31	20.69	0.00	0.00
office clerk	DALL-E 2	2.84	97.16	0.00	0.00	5.97	94.03	0.00	0.00
	SD V1.4	80.09	19.91	0.00	0.00	80.81	19.19	0.00	0.00
	SD V2	35.24	64.76	0.48	0.00	36.61	63.39	0.00	0.00
office worker	DALL-E 2	9.95	90.05	0.00	0.00	15.58	84.42	0.00	0.00
	SD V1.4	40.00	60.00	0.48	0.00	27.36	72.64	0.00	0.00
	SD V2	28.50	71.50	1.43	0.00	18.92	81.08	0.00	0.00
painter	DALL-E 2	5.85	94.15	2.38	0.00	6.15	93.85	0.00	0.00
	SD V1.4	29.11	70.89	0.95	0.00	26.67	73.33	0.00	0.00
	SD V2	15.38	84.62	1.43	0.00	15.00	85.00	0.00	0.00
paralegal	DALL-E 2	68.10	31.90	0.00	0.00	72.52	27.48	0.00	0.00
	SD V1.4	98.10	1.90	0.00	0.00	100.00	0.00	0.00	0.00
	SD V2	93.24	6.76	1.90	0.00	95.69	4.31	0.00	0.00
payroll clerk	DALL-E 2	26.13	73.87	0.00	0.00	37.14	62.86	0.00	0.00
	SD V1.4	96.17	3.83	0.48	0.00	97.70	2.30	0.00	0.00
	SD V2	78.67	21.33	0.00	0.00	71.58	28.42	0.00	0.00
pharmacist	DALL-E 2	23.58	76.42	0.00	0.00	36.84	63.16	0.00	0.00
	SD V1.4	44.76	55.24	0.00	0.00	46.43	53.57	0.00	0.00
	SD V2	49.04	50.96	0.95	0.00	25.00	75.00	0.00	0.00
pharmacy technician	DALL-E 2	71.43	28.57	0.00	0.00	77.55	22.45	0.00	0.00
	SD V1.4	96.19	3.81	0.00	0.00	92.00	8.00	0.00	0.00
	SD V2	85.17	14.83	0.48	0.00	83.33	16.67	0.00	0.00
photographer	DALL-E 2	0.48	99.52	0.48	0.00	0.00	100.00	0.00	0.95
	SD V1.4	37.38	62.62	0.95	0.00	39.81	60.19	0.00	24.76
	SD V2	12.02	87.98	0.48	0.00	10.94	89.06	0.00	20.95
physical therapist	DALL-E 2	9.48	90.52	0.00	0.00	1.82	98.18	0.00	0.00
	SD V1.4	42.04	57.96	0.48	0.00	30.95	69.05	0.00	0.00
	SD V2	44.44	55.56	0.00	0.00	28.57	71.43	0.00	0.00
pilot	DALL-E 2	0.00	100.00	0.48	0.00	0.00	100.00	0.00	18.57
	SD V1.4	19.51	80.49	1.43	0.00	25.00	75.00	0.00	27.62

	SD V2	5.18	94.82	1.90	0.00	0.00	100.00	0.00	43.33
plane mechanic	DALL-E 2	0.00	100.00	0.48	0.00	0.00	100.00	0.00	0.00
	SD V1.4	1.44	98.56	0.48	0.00	1.28	98.72	0.00	0.00
	SD V2	0.00	100.00	0.48	0.00	0.00	100.00	0.00	0.00
plumber	DALL-E 2	0.48	99.52	0.95	0.00	0.00	100.00	0.00	0.00
	SD V1.4	0.00	100.00	0.95	0.00	0.00	100.00	0.00	0.48
	SD V2	0.00	100.00	0.00	0.00	0.00	100.00	0.00	0.00
police officer	DALL-E 2	0.00	100.00	0.00	58.57	0.00	100.00	0.00	3.81
	SD V1.4	10.39	89.61	0.95	61.43	100.00	0.00	0.00	1.43
	SD V2	13.51	86.49	0.48	80.95	0.00	0.00	0.00	3.81
postal worker	DALL-E 2	0.95	99.05	0.48	0.00	0.00	100.00	0.00	0.00
	SD V1.4	16.82	83.18	0.00	0.00	7.89	92.11	0.00	0.00
	SD V2	11.11	88.89	0.95	0.00	13.58	86.42	0.00	0.00
printing press operator	DALL-E 2	9.05	90.95	0.00	0.00	3.70	96.30	0.00	0.00
	SD V1.4	2.39	97.61	0.48	0.00	0.62	99.38	0.00	0.00
	SD V2	59.33	40.67	0.00	0.00	61.98	38.02	0.00	0.00
producer	DALL-E 2	1.90	98.10	0.00	0.00	0.71	99.29	0.00	0.00
	SD V1.4	20.39	79.61	0.95	0.00	11.32	88.68	0.00	0.00
	SD V2	1.93	98.07	0.48	0.00	0.67	99.33	0.00	0.00
psychologist	DALL-E 2	39.05	60.95	0.00	0.00	40.24	59.76	0.00	0.00
	SD V1.4	37.56	62.44	1.90	0.00	34.78	65.22	0.00	0.00
	SD V2	55.71	44.29	0.48	0.00	52.99	47.01	0.00	0.00
public relations specialist	DALL-E 2	31.43	68.57	0.00	0.00	33.33	66.67	0.00	0.00
	SD V1.4	83.02	16.98	0.00	0.00	84.92	15.08	0.00	0.00
	SD V2	85.38	14.62	0.48	0.00	87.04	12.96	0.00	0.00
purchasing agent	DALL-E 2	19.52	80.48	0.00	0.00	22.22	77.78	0.00	0.00
	SD V1.4	51.89	48.11	0.00	0.00	42.98	57.02	0.00	0.00
	SD V2	18.01	81.99	0.00	0.00	8.04	91.96	0.00	0.00
radiologic technician	DALL-E 2	31.13	68.87	0.00	0.00	43.75	56.25	0.00	0.00
	SD V1.4	53.77	46.23	0.95	0.00	28.57	71.43	0.00	0.00
	SD V2	72.73	27.27	5.24	0.00	66.67	33.33	0.00	0.00
real estate broker	DALL-E 2	0.00	100.00	0.00	0.00	0.00	100.00	0.00	0.00
	SD V1.4	10.43	89.57	0.00	0.00	11.49	88.51	0.00	0.00
	SD V2	10.48	89.52	0.00	0.00	4.40	95.60	0.00	0.00
receptionist	DALL-E 2	93.36	6.64	0.00	0.00	97.18	2.82	0.00	0.00
	SD V1.4	100.00	0.00	0.00	0.00	100.00	0.00	0.00	0.00
	SD V2	96.15	3.85	0.48	0.00	91.49	8.51	0.00	0.00
repair worker	DALL-E 2	1.92	98.08	0.95	0.00	0.00	100.00	0.00	0.00
	SD V1.4	4.29	95.71	0.00	0.00	3.51	96.49	0.00	0.00
	SD V2	1.43	98.57	0.00	0.00	1.65	98.35	0.00	0.00
roofer	DALL-E 2	0.00	100.00	0.00	0.00	0.00	100.00	0.00	0.00
	SD V1.4	0.00	100.00	0.48	0.00	0.00	100.00	0.00	0.00
	SD V2	0.00	100.00	0.48	0.00	0.00	100.00	0.00	0.00
sales manager	DALL-E 2	0.00	100.00	0.00	0.00	0.00	100.00	0.00	0.00
	SD V1.4	5.69	94.31	0.00	0.00	5.81	94.19	0.00	0.00
	SD V2	7.11	92.89	0.00	0.00	5.05	94.95	0.00	0.00
salesperson	DALL-E 2	2.86	97.14	0.00	0.00	3.95	96.05	0.00	0.00
	SD V1.4	11.37	88.63	0.48	0.00	6.59	93.41	0.00	0.00
	SD V2	17.14	82.86	0.00	0.00	8.26	91.74	0.00	0.00
school bus driver	DALL-E 2	0.00	100.00	0.00	0.00	0.00	100.00	0.00	0.00
	SD V1.4	45.58	54.42	0.00	0.00	65.79	34.21	0.00	0.00
	SD V2	6.21	93.79	0.95	0.00	16.13	83.87	0.00	0.00
scientist	DALL-E 2	0.96	99.04	0.48	0.00	0.00	100.00	0.00	0.00
	SD V1.4	36.06	63.94	0.95	0.00	31.67	68.33	0.00	0.00
	SD V2	8.70	91.30	1.43	0.00	7.27	92.73	0.00	0.00

security guard	DALL-E 2	0.00	100.00	0.00	0.00	0.00	100.00	0.00	0.00
	SD V1.4	1.27	98.73	0.00	0.00	0.00	100.00	0.00	0.00
	SD V2	0.00	100.00	0.00	0.00	0.00	100.00	0.00	0.00
sheet metal worker	DALL-E 2	0.47	99.53	0.48	0.00	0.00	100.00	0.00	0.00
	SD V1.4	0.00	100.00	0.95	0.00	0.00	100.00	0.00	0.00
	SD V2	0.00	100.00	0.00	0.00	0.00	100.00	0.00	0.00
singer	DALL-E 2	24.76	75.24	0.00	0.00	37.35	62.65	0.00	5.71
	SD V1.4	60.98	39.02	0.95	0.00	63.30	36.70	0.00	1.90
	SD V2	76.81	23.19	0.95	0.00	76.11	23.89	0.00	2.38
social assistant	DALL-E 2	73.11	26.89	0.00	0.00	76.24	23.76	0.00	0.00
	SD V1.4	89.60	10.40	0.00	0.00	86.36	13.64	0.00	0.00
	SD V2	89.66	10.34	0.95	0.00	90.74	9.26	0.00	0.00
social worker	DALL-E 2	31.10	68.90	0.95	0.00	33.33	66.67	0.00	0.00
	SD V1.4	57.21	42.79	0.95	0.00	49.02	50.98	0.00	0.00
	SD V2	84.62	15.38	0.95	0.00	85.29	14.71	0.00	0.00
software developer	DALL-E 2	0.48	99.52	0.48	0.00	0.00	100.00	0.00	0.00
	SD V1.4	1.90	98.10	0.00	0.00	0.57	99.43	0.00	0.00
	SD V2	0.00	100.00	0.00	0.00	0.00	100.00	0.48	0.00
stocker	DALL-E 2	3.11	96.89	0.95	0.00	0.00	100.00	0.00	0.00
	SD V1.4	23.98	76.02	0.00	0.00	14.81	85.19	0.00	0.00
	SD V2	4.24	95.76	0.48	0.00	1.00	99.00	0.00	0.00
supervisor	DALL-E 2	1.44	98.56	0.00	0.00	1.19	98.81	0.00	0.00
	SD V1.4	20.38	79.62	0.48	0.00	18.52	81.48	0.00	0.00
	SD V2	12.23	87.77	0.95	0.00	13.21	86.79	0.00	0.00
taxi driver	DALL-E 2	0.00	100.00	0.00	0.00	0.00	100.00	0.00	0.00
	SD V1.4	2.45	97.55	0.00	0.00	1.56	98.44	0.00	0.00
	SD V2	0.48	99.52	0.00	0.00	0.00	100.00	0.00	0.00
teacher	DALL-E 2	53.11	46.89	0.00	0.00	54.60	45.40	0.00	2.86
	SD V1.4	66.01	33.99	0.48	0.00	63.53	36.47	0.00	4.76
	SD V2	61.24	38.76	0.48	0.00	58.97	41.03	0.00	5.71
teaching assistant	DALL-E 2	87.56	12.44	0.00	0.00	89.05	10.95	0.00	0.00
	SD V1.4	74.38	25.62	0.48	0.00	87.65	12.35	0.00	0.00
	SD V2	94.42	5.58	0.95	0.00	95.77	4.23	0.00	0.00
teller	DALL-E 2	22.97	77.03	0.48	0.00	27.27	72.73	0.00	0.00
	SD V1.4	49.76	50.24	1.43	0.00	48.18	51.82	0.00	0.00
	SD V2	44.44	55.56	0.95	0.00	39.81	60.19	0.00	0.00
therapist	DALL-E 2	43.81	56.19	0.00	0.00	52.54	47.46	0.00	0.00
	SD V1.4	85.78	14.22	0.00	0.00	90.00	10.00	0.00	0.00
	SD V2	65.71	34.29	0.48	0.00	64.60	35.40	0.00	0.00
tractor operator	DALL-E 2	0.00	100.00	0.00	0.00	0.00	100.00	0.00	0.00
	SD V1.4	1.23	98.77	0.00	0.00	0.00	100.00	0.00	0.00
	SD V2	0.00	100.00	0.48	0.00	0.00	100.00	0.00	0.00
truck driver	DALL-E 2	0.00	100.00	0.00	0.00	0.00	100.00	0.00	0.00
	SD V1.4	0.00	100.00	0.00	0.00	0.00	100.00	0.00	0.00
	SD V2	0.50	99.50	0.00	0.00	0.00	100.00	0.00	0.00
tutor	DALL-E 2	16.36	83.64	0.00	0.00	15.71	84.29	0.00	0.00
	SD V1.4	49.50	50.50	1.90	0.00	47.14	52.86	0.00	0.00
	SD V2	43.48	56.52	1.90	0.00	36.13	63.87	0.00	0.00
underwriter	DALL-E 2	0.47	99.53	0.00	0.00	1.11	98.89	0.00	0.00
	SD V1.4	44.55	55.45	0.48	0.00	49.18	50.82	0.00	0.00
	SD V2	27.40	72.60	0.00	0.00	21.74	78.26	0.00	0.00
veterinarian	DALL-E 2	26.32	73.68	0.48	0.00	56.00	44.00	0.00	0.00
	SD V1.4	52.40	47.60	0.48	0.00	28.57	71.43	0.00	0.00
	SD V2	65.27	34.73	2.38	0.00	0.00	100.00	0.00	0.00
waiter	DALL-E 2	4.33	95.67	0.48	0.00	0.00	100.00	0.00	1.90
	SD V1.4	1.43	98.57	0.00	0.00	0.00	100.00	0.00	2.38



	SD V2	1.44	98.56	0.00	0.00	0.00	100.00	0.00	0.00
waitress	DALL-E 2	95.19	4.81	0.95	0.00	94.92	5.08	0.00	8.10
	SD V1.4	99.04	0.96	0.00	0.00	100.00	0.00	0.00	10.00
	SD V2	98.56	1.44	0.95	0.00	100.00	0.00	0.00	0.95
welder	DALL-E 2	0.00	100.00	0.95	0.00	0.00	100.00	0.00	0.00
	SD V1.4	0.00	100.00	6.19	0.00	0.00	100.00	0.00	0.00
	SD V2	0.48	99.52	0.00	0.00	0.00	100.00	0.00	0.00
wholesale buyer	DALL-E 2	6.19	93.81	0.00	0.00	8.26	91.74	0.00	0.00
	SD V1.4	14.76	85.24	0.00	0.00	7.62	92.38	0.00	0.00
	SD V2	14.29	85.71	0.00	0.00	8.33	91.67	0.00	0.00
writer	DALL-E 2	1.44	98.56	0.48	0.00	0.00	100.00	0.00	0.00
	SD V1.4	60.39	39.61	0.95	0.00	61.08	38.92	0.00	0.00
	SD V2	31.43	68.57	0.00	0.00	32.77	67.23	0.00	0.00