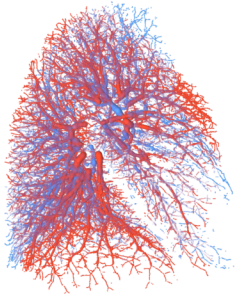
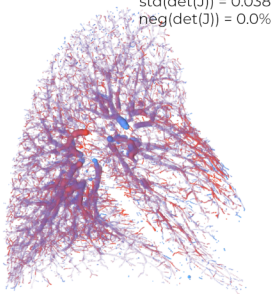


case #4

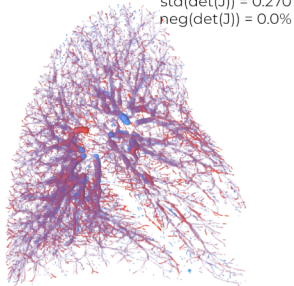
TRE=11.83mm



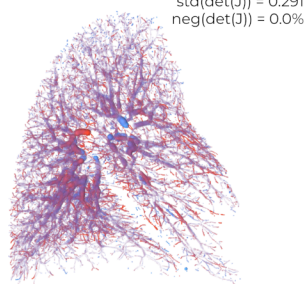
TRE=1.75mm



TRE=1.78mm

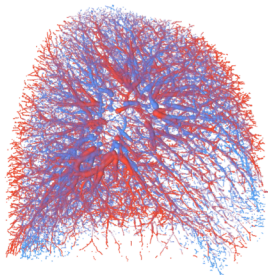


TRE=1.72mm

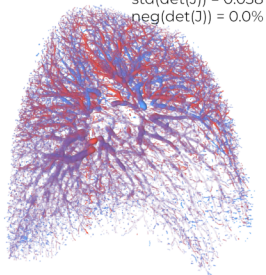


case #10

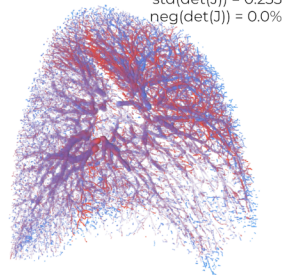
TRE=18.05mm



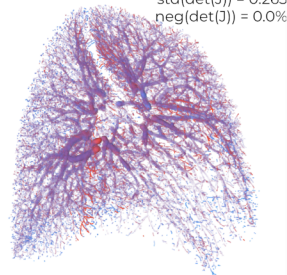
TRE=5.69mm



TRE=4.36mm



TRE=2.19mm



initial (affine registration)

DiVRoC (PPWC + Inst. Opt.)

backward-warp optimise

**ours (fwd-splat) optimise**