

META-DATASET: A DATASET OF DATASETS FOR LEARNING TO LEARN FROM FEW EXAMPLES

Anonymous authors

Paper under double-blind review

ABSTRACT

Few-shot classification refers to learning a classifier for new classes given only a few examples. While a plethora of models have emerged to tackle it, we find the procedure and datasets that are used to assess their progress lacking. To address this limitation, we propose META-DATASET: a new benchmark for training and evaluating models that is large-scale, consists of diverse datasets, and presents more realistic tasks. We experiment with popular baselines and meta-learners on META-DATASET, along with a competitive method that we propose. We analyze performance as a function of various characteristics of test tasks and examine the models’ ability to leverage diverse training sources for improving their generalization. We also propose a new set of baselines for quantifying the benefit of meta-learning in META-DATASET. Our extensive experimentation has uncovered important research challenges and we hope to inspire work in these directions.

1 INTRODUCTION

Few-shot learning refers to learning new concepts from few examples, an ability that humans naturally possess, but machines still lack. Improving on this aspect would lead to more efficient algorithms that can flexibly expand their knowledge without requiring large labeled datasets. We focus on few-shot classification: classifying unseen examples into one of N new ‘test’ classes, given only a few reference examples of each. Recent progress in this direction has been made by considering a meta-problem: though we are not interested in learning about any training class in particular, we can exploit the training classes for the purpose of *learning to learn new classes from few examples*, thus acquiring a learning procedure that can be directly applied to new few-shot learning problems too.

This intuition has inspired numerous models of increasing complexity (see Related Work for some examples). However, we believe that the commonly-used setup for measuring success in this direction is lacking. Specifically, two datasets have emerged as *de facto* benchmarks for few-shot learning: Omniglot (Lake et al., 2015), and *mini*-ImageNet (Vinyals et al., 2016), and we believe that both of them are approaching their limit in terms of allowing one to discriminate between the merits of different approaches. Omniglot is a dataset of 1623 handwritten characters from 50 different alphabets and contains 20 examples per class (character). Most recent methods obtain very high accuracy on Omniglot, rendering the comparisons between them mostly uninformative. *mini*-ImageNet is formed out of 100 ImageNet (Russakovsky et al., 2015) classes (64/16/20 for train/validation/test) and contains 600 examples per class. Albeit harder than Omniglot, it has the same property that most recent methods trained on it present similar accuracy when controlling for model capacity. We advocate that a more challenging and realistic benchmark is required for further progress in this area.

More specifically, current benchmarks: 1) Consider homogeneous learning tasks. In contrast, real-life episodes are heterogeneous: they vary in terms of the number of classes and examples per class, and are unbalanced. 2) Measure only within-dataset generalization. However, we are eventually after models that can generalize to entirely new distributions (e.g. datasets) 3) Ignore the relationships between classes when forming episodes. The coarse-grained classification of dogs and chairs may present different difficulties than the fine-grained classification of dog breeds, and current benchmarks do not establish a distinction between the two.

META-DATASET aims to improve upon previous benchmarks in the above directions: it is significantly larger-scale and is comprised of multiple datasets of diverse data distributions; its task creation is informed by class structure for ImageNet and Omniglot; it introduces realistic class imbalance; and it

varies the number of classes in each task and the size of the training set, thus testing the robustness of models across the spectrum from very-low-shot learning onwards.

The main contributions of this work are: 1) A more realistic, large-scale and diverse environment for training and testing few-shot learners. 2) Experimental evaluation of popular models, and a new set of baselines combining inference algorithms of meta-learners with non-episodic training. 3) Analyses of whether different models benefit from more data, heterogeneous training sources, pre-trained weights, and meta-training. 4) A novel meta-learner that performs strongly on META-DATASET.

2 BACKGROUND

Task Formulation The end-goal of few-shot classification is to produce a model which, given a new learning *episode* with N classes and a few labeled examples (k_c per class, $c \in 1, \dots, N$), is able to generalize to unseen examples for that episode. In other words, the model learns from a training (*support*) set $\mathcal{S} = \{(\mathbf{x}_1, y_1), (\mathbf{x}_2, y_2), \dots, (\mathbf{x}_K, y_K)\}$ (with $K = \sum_c k_c$) and is evaluated on a held-out test (*query*) set $\mathcal{Q} = \{(\mathbf{x}_1^*, y_1^*), (\mathbf{x}_2^*, y_2^*), \dots, (\mathbf{x}_T^*, y_T^*)\}$. Each example (\mathbf{x}, y) is formed of an input vector $\mathbf{x} \in \mathbb{R}^D$ and a class label $y \in \{1, \dots, N\}$. Episodes with balanced training sets (i.e., $k_c = k, \forall c$) are usually described as ‘ N -way, k -shot’ episodes. Evaluation episodes are constructed by sampling their N classes from a larger set \mathcal{C}_{test} of classes and sampling the desired number of examples per class.

A disjoint set \mathcal{C}_{train} of classes is available to train the model; note that this notion of training is distinct from the training that occurs within a few-shot learning episode. Few-shot learning does not prescribe a specific procedure for exploiting \mathcal{C}_{train} , but a common approach matches the conditions in which the model is trained and evaluated (Vinyals et al., 2016). In other words, training often (but not always) proceeds in an episodic fashion. Some authors use *training* and *testing* to refer to what happens *within* any given episode, and *meta-training* and *meta-testing* to refer to using \mathcal{C}_{train} to turn the model into a learner capable of fast adaptation and \mathcal{C}_{test} for evaluating its success to learn using few shots. This nomenclature highlights the *meta-learning* perspective alluded to earlier, but to avoid confusion we will adopt another common nomenclature and refer to the training and test sets of an episode as the *support* and *query* sets and to the process of learning from \mathcal{C}_{train} simply as training. We use the term ‘meta-learner’ to describe a model that is trained episodically, i.e. learns to learn across multiple tasks that are sampled from the training set \mathcal{C}_{train} .

Non-episodic Approaches to Few-shot Classification A natural non-episodic approach simply trains a classifier over all of the training classes \mathcal{C}_{train} at once, which can be parameterized by a neural network with a linear layer on top with one output unit per class. After training, this neural network is used as an embedding function g that maps images into a meaningful representation space. The hope of using this model for few-shot learning is that this representation space is useful even for examples of classes that were not included in training. It would then remain to define an algorithm for performing few-shot classification on top of these representations of the images of a task. We consider two choices for this algorithm, yielding the ‘ k -NN’ and ‘Finetune’ variants of this baseline.

Given a test episode, the ‘ k -NN’ baseline classifies each query example as the class that its ‘closest’ support example belongs to. Closeness is measured by either Euclidean or cosine distance in the learned embedding space; a choice that we treat as a hyperparameter. On the other hand, the ‘Finetune’ baseline uses the support set of the given test episode to train a new ‘output layer’ on top of the embeddings g , and optionally finetune those embedding too (another hyperparameter), for the purpose of classifying between the N new classes of the associated task.

A variant of the ‘Finetune’ baseline has recently become popular: Baseline++ (Chen et al., 2019), originally inspired by Gidaris & Komodakis (2018); Qi et al. (2018). It uses a ‘cosine classifier’ as the final layer (ℓ^2 -normalizing embeddings and weights before taking the dot product), both during the non-episodic training phase, and for evaluation on test episodes. We incorporate this idea in our codebase by adding a hyperparameter that optionally enables using a cosine classifier for the ‘ k -NN’ (evaluation only) and ‘Finetune’ (both phases) baselines.

Meta-Learners for Few-shot Classification In the episodic setting, models are trained end-to-end for the purpose of learning to build classifiers from a few examples. We choose to experiment with Matching Networks (Vinyals et al., 2016), Relation Networks (Sung et al., 2018), Prototypical

Networks (Snell et al., 2017) and Model Agnostic Meta-Learning (MAML, Finn et al., 2017) since they cover a diverse set of approaches to few-shot learning. We also introduce a novel meta-learner which is inspired by the last two models.

In each training episode, episodic models compute for each query example $\mathbf{x}^* \in \mathcal{Q}$, the distribution for its label $p(y^*|\mathbf{x}^*, \mathcal{S})$ conditioned on the support set \mathcal{S} and allow training this differentially-parameterized conditional distribution end-to-end via gradient descent. The different models are distinguished by the manner in which this conditioning on the support set is realized. In all cases, the performance on the query set drives the update of the meta-learner’s weights, which include (and sometimes consist only of) the embedding weights. We briefly describe each method below.

Prototypical Networks Prototypical Networks construct a prototype for each class and then classify each query example as the class whose prototype is ‘nearest’ to it under Euclidean distance. More concretely, the probability that a query example \mathbf{x}^* belongs to class k is defined as:

$$p(y^* = k|\mathbf{x}^*, \mathcal{S}) = \frac{\exp(-\|g(\mathbf{x}^*) - \mathbf{c}_k\|_2^2)}{\sum_{k' \in \{1, \dots, N\}} \exp(-\|g(\mathbf{x}^*) - \mathbf{c}_{k'}\|_2^2)}$$

where \mathbf{c}_k is the ‘prototype’ for class k : the average of the embeddings of class k ’s support examples.

Matching Networks Matching Networks (in their simplest form) label each query example as a (cosine) distance-weighted linear combination of the support labels:

$$p(y^* = k|\mathbf{x}^*, \mathcal{S}) = \sum_{i=1}^{|\mathcal{S}|} \alpha(\mathbf{x}^*, \mathbf{x}_i) \mathbf{1}_{y_i=k},$$

where $\mathbf{1}_A$ is the indicator function and $\alpha(\mathbf{x}^*, \mathbf{x}_i)$ is the cosine similarity between $g(\mathbf{x}^*)$ and $g(\mathbf{x}_i)$, softmax-normalized over all support examples \mathbf{x}_i , where $1 \leq i \leq |\mathcal{S}|$.

Relation Networks Relation Networks are comprised of an embedding function g as usual, and a ‘relation module’ parameterized by some additional neural network layers. They first embed each support and query using g and create a prototype p_c for each class c by averaging its support embeddings. Each prototype p_c is concatenated with each embedded query and fed through the relation module which outputs a number in $[0, 1]$ representing the predicted probability that that query belongs to class c . The query loss is then defined as the mean square error of that prediction compared to the (binary) ground truth. Both g and the relation module are trained to minimize this loss.

MAML MAML uses a linear layer parametrized by \mathbf{W} and \mathbf{b} on top of the embedding function $g(\cdot; \theta)$ and classifies a query example as

$$p(y^*|\mathbf{x}^*, \mathcal{S}) = \text{softmax}(\mathbf{b}' + \mathbf{W}'g(\mathbf{x}^*; \theta')),$$

where the output layer parameters \mathbf{W}' and \mathbf{b}' and the embedding function parameters θ' are obtained by performing a small number of within-episode training steps on the support set \mathcal{S} , starting from initial parameter values $(\mathbf{b}, \mathbf{W}, \theta)$. The model is trained by backpropagating the query set loss through the within-episode gradient descent procedure and into $(\mathbf{b}, \mathbf{W}, \theta)$. This normally requires computing second-order gradients, which can be expensive to obtain (both in terms of time and memory). For this reason, an approximation is often used whereby gradients of the within-episode descent steps are ignored. This variant is referred to as first-order MAML (fo-MAML) and was used in our experiments. We did attempt to use the full-order version, but found it to be impractically expensive (e.g., it caused frequent out-of-memory problems).

Moreover, since in our setting the number of ways varies between episodes, \mathbf{b} , \mathbf{W} are set to zero and are not trained (i.e., \mathbf{b}' , \mathbf{W}' are the result of within-episode gradient descent initialized at 0), leaving only θ to be trained. In other words, MAML focuses on learning the within-episode initialization θ of the embedding network so that it can be rapidly adapted for a new task.

Introducing Proto-MAML We introduce a novel meta-learner that combines the complementary strengths of Prototypical Networks and MAML: the former’s simple inductive bias that is evidently effective for very-few-shot learning, and the latter’s flexible adaptation mechanism.

As explained by Snell et al. (2017), Prototypical Networks can be re-interpreted as a linear classifier applied to a learned representation $g(\mathbf{x})$. The use of a squared Euclidean distance means that output logits are expressed as

$$-||g(\mathbf{x}^*) - \mathbf{c}_k||^2 = -g(\mathbf{x}^*)^T g(\mathbf{x}^*) + 2\mathbf{c}_k^T g(\mathbf{x}^*) - \mathbf{c}_k^T \mathbf{c}_k = 2\mathbf{c}_k^T g(\mathbf{x}^*) - ||\mathbf{c}_k||^2 + constant$$

where *constant* is a class-independent scalar which can be ignored, as it leaves output probabilities unchanged. The k -th unit of the equivalent linear layer therefore has weights $\mathbf{W}_{k,\cdot} = 2\mathbf{c}_k$ and biases $b_k = -||\mathbf{c}_k||^2$, which are both differentiable with respect to θ as they are a function of $g(\cdot; \theta)$.

We refer to (fo-)Proto-MAML as the (fo-)MAML model where the task-specific linear layer of each episode is initialized from the Prototypical Network-equivalent weights and bias defined above and subsequently optimized as usual on the given support set. When computing the update for θ , we allow gradients to flow through the Prototypical Network-equivalent linear layer initialization. We show that this simple modification significantly helps the optimization of this model and outperforms vanilla fo-MAML by a large margin on META-DATASET.

3 META-DATASET: A NEW FEW-SHOT CLASSIFICATION BENCHMARK

META-DATASET aims to offer an environment for measuring progress in realistic few-shot classification tasks. Our approach is twofold: 1) changing the data and 2) changing the formulation of the task (i.e., how episodes are generated). The following sections describe these modifications in detail. Our code is provided with this submission.¹

3.1 META-DATASET’S DATA

META-DATASET’s data is much larger in size than any previous benchmark, and is comprised of *multiple existing datasets*. This invites research into how diverse sources of data can be exploited by a meta-learner, and allows us to evaluate a more challenging generalization problem, to new datasets altogether. Specifically, META-DATASET leverages data from the following 10 datasets: ILSVRC-2012 (ImageNet, Russakovsky et al., 2015), Omniglot (Lake et al., 2015), Aircraft (Maji et al., 2013), CUB-200-2011 (Birds, Wah et al., 2011), Describable Textures (Cimpoi et al., 2014), Quick Draw (Jongejan et al., 2016), Fungi (Schroeder & Cui, 2018), VGG Flower (Nilsback & Zisserman, 2008), Traffic Signs (Houben et al., 2013) and MSCOCO (Lin et al., 2014). These datasets were chosen because they are free and easy to obtain, span a variety of visual concepts (natural and human-made) and vary in how fine-grained the class definition is. More information about each of these datasets is provided in the Appendix.

To ensure that episodes correspond to realistic classification problems, each episode generated in META-DATASET uses classes from a single dataset. Moreover, two of these datasets, Traffic Signs and MSCOCO, are fully reserved for evaluation, meaning that no classes from them participate in the training set. The remaining ones contribute some classes to each of the training, validation and test splits of classes, roughly with 70% / 15% / 15% proportions. Two of these datasets, ImageNet and Omniglot, possess a class hierarchy that we exploit in META-DATASET.

ImageNet ImageNet is comprised of 82,115 ‘synsets’, i.e., concepts of the WordNet ontology, and it provides ‘is-a’ relationships for its synsets, thus defining a DAG over them. META-DATASET uses the 1K synsets that were chosen for the ILSVRC 2012 classification challenge and defines a new class split for it and a novel procedure for sampling classes from it for episode creation, both informed by its class hierarchy.

Specifically, we construct a sub-graph of the overall DAG whose leaves are the 1K classes of ILSVRC-2012. We then ‘cut’ this sub-graph into three pieces, for the training, validation, and test splits, such that there is no overlap between the leaves of any of these pieces. For this, we selected the synsets ‘carnivore’ and ‘device’ as the roots of the validation and test sub-graphs, respectively. The leaves that are reachable from ‘carnivore’ and ‘device’ form the sets of the validation and test classes, respectively. All of the remaining leaves constitute the training classes. This method of splitting ensures that the training classes are semantically different from the test classes. We end up with 712 training, 202 validation and 188 test classes, roughly adhering to the standard 70 / 15 / 15 (%) splits.

¹<https://storage.googleapis.com/meta-dataset-source-code/meta-dataset-iclr2020.tar.gz>

Omniglot This dataset is one of the established benchmarks for few-shot classification as mentioned earlier. However, contrary to the common setup that flattens and ignores its two-level hierarchy of alphabets and characters, we allow it to influence the episode class selection in META-DATASET, yielding finer-grained tasks. We also use the original splits proposed in Lake et al. (2015): (all characters of) the ‘background’ and ‘evaluation’ alphabets are used for training and testing, respectively. However, we reserve the 5 smallest alphabets from the ‘background’ set for validation.

3.2 EPISODE SAMPLING

In this section we outline META-DATASET’s algorithm for sampling episodes, featuring hierarchically-aware procedures for sampling classes of ImageNet and Omniglot, and an algorithm that yields realistically imbalanced episodes of variable shots and ways. Given a particular split of a particular dataset, we sample an episode from it in two steps: Step 1) sample a set of classes \mathcal{C} from it, and Step 2) sample support and query sets of examples from those classes.

Step 1: Sampling the episode’s class set This procedure differs depending on which dataset is chosen. For datasets without a known class organization, we sample the ‘way’ uniformly from the range $[5, \text{MAX-CLASSES}]$, where MAX-CLASSES is either 50 or as many as there are available. Then we sample ‘way’ many classes uniformly at random from the requested class split of the given dataset. ImageNet and Omniglot use class-structure-aware procedures outlined below.

ImageNet class sampling We adopt a hierarchy-aware sampling procedure: First, we sample an internal (non-leaf) node uniformly from the DAG of the given split. The chosen set of classes is then the set of leaves spanned by that node (or a random subset of it, if more than 50). We prevent nodes that are too close to the root to be selected as the internal node, as explained in more detail in the Appendix. This procedure enables the creation of tasks of varying degrees of fine-grainedness: the larger the height of the internal node, the more coarse-grained the resulting episode.

Omniglot class sampling We sample classes from Omniglot by first sampling an alphabet uniformly at random from the chosen split of alphabets (train, validation or test). Then, the ‘way’ of the episode is sampled uniformly at random using the same restrictions as for the rest of the datasets, but taking care not to sample a larger number than the number of characters that belong to the chosen alphabet. Finally, the prescribed number of characters of that alphabet are randomly sampled. This ensures that each episode presents a within-alphabet fine-grained classification.

Step 2: Sampling the episode’s examples Having already selected a set of classes, the choice of the examples from them that will populate an episode can be broken down into three steps. We provide a high-level description here and elaborate in the Appendix with the accompanying formulas.

Step 2a: Compute the query set size. The query set is class-balanced, reflecting the fact that we care equally to perform well on all classes of an episode. The number of query images *per class* is set to a number such that all chosen classes have enough images to contribute that number and still remain with roughly half on their images to possibly add to the support set (in a later step). This number is capped to 10 images per class.

Step 2b: Compute the support set size. We allow each chosen class to contribute to the support set at most 100 of its remaining examples (i.e. excluding the ones added to the query set). We multiply this remaining number by a scalar sampled uniformly from the interval $(0, 1]$ to enable the potential generation of ‘few-shot’ episodes even when multiple images are available, as we are also interested in studying that end of the spectrum. We do enforce, however, that each chosen class has a budget for at least one image in the support set, and we cap the total support set size to 500 examples.

Step 2c: Compute the shot of each class. We now discuss how to distribute the total support set size chosen above across the participating classes. The un-normalized proportion of the support set that will be occupied by a given chosen class is a noisy version of the total number of images of that class in the dataset. This design choice is made in the hopes of obtaining realistic class ratios, under the hypothesis that the dataset class statistics are a reasonable approximation of the real-world statistics of appearances of the corresponding classes. We ensure that each class has at least one image in the support set and distribute the rest according to the above rule.

After these steps, we complete the episode creation process by choosing the prescribed number of examples of each chosen class uniformly at random to populate the support and query sets.

4 RELATED WORK

In this work we evaluate four meta-learners on META-DATASET that we believe capture a good diversity of well-established models. Evaluating other few-shot classifiers on META-DATASET is beyond the scope of this paper, but we discuss some additional related models below.

Similarly to MAML, some train a meta-learner for quick adaptation to new tasks (Ravi & Larochelle, 2017; Munkhdalai & Yu, 2017; Rusu et al., 2019; Yoon et al., 2018). Others relate to Prototypical Networks by learning a representation on which differentiable training can be performed on some form of classifier (Bertinetto et al., 2019; Gidaris & Komodakis, 2018; Oreshkin et al., 2018). Others relate to Matching Networks in that they perform comparisons between pairs of support and query examples, using either a graph neural network (Satorras & Estrach, 2018) or an attention mechanism (Mishra et al., 2018). Finally, some make use of memory-augmented recurrent networks (Santoro et al., 2016), some learn to perform data augmentation (Hariharan & Girshick, 2017; Wang et al., 2018) in a low-shot learning setting, and some learn to predict the parameters of a large-shot classifier from the parameters learned in a few-shot setting (Wang & Hebert, 2016; Wang et al., 2017). Of relevance to Proto-MAML is MAML++ (Antoniou et al., 2019), which consists of a collection of adjustments to MAML, such as multiple meta-trained inner loop learning rates and derivative-order annealing. Proto-MAML instead modifies the output weight initialization scheme and could be combined with those adjustments.

Finally, META-DATASET relates to other recent image classification benchmarks. The CVPR 2017 Visual Domain Decathlon Challenge trains a model on 10 different datasets, many of which are included in our benchmark, and measures its ability to generalize to held-out examples for those same datasets but does not measure generalization to new classes (or datasets). Hariharan & Girshick (2017) propose a benchmark where a model is given abundant data from certain *base* ImageNet classes and is tested on few-shot learning *novel* ImageNet classes in a way that doesn't compromise its knowledge of the base classes. Wang et al. (2018) build upon that benchmark and propose a new evaluation protocol for it. Chen et al. (2019) investigate fine-grained few-shot classification using the CUB dataset (Wah et al., 2011, also featured in our benchmark) and cross-domain transfer between *mini*-ImageNet and CUB. Larger-scale few-shot classification benchmarks were also proposed using CIFAR-100 (Krizhevsky et al., 2009; Bertinetto et al., 2019; Oreshkin et al., 2018), *tiered*-ImageNet (Ren et al., 2018), and ImageNet-21k (Dhillon et al., 2019). Compared to these, META-DATASET contains the largest set of diverse datasets in the context of few-shot learning and is additionally accompanied by an algorithm for creating learning scenarios from that data that we advocate are more realistic than the previous ones.

5 EXPERIMENTS

Training procedure. META-DATASET does not prescribe a procedure for learning from the training data. In these experiments, keeping with the spirit of matching training and testing conditions, we trained the meta-learners via training episodes sampled using the same algorithm as we used for META-DATASET's evaluation episodes, described above. The choice of the dataset from which to sample the next episode was random uniform. The non-episodic baselines are trained to solve the large classification problem that results from 'concatenating' the training classes of all datasets.

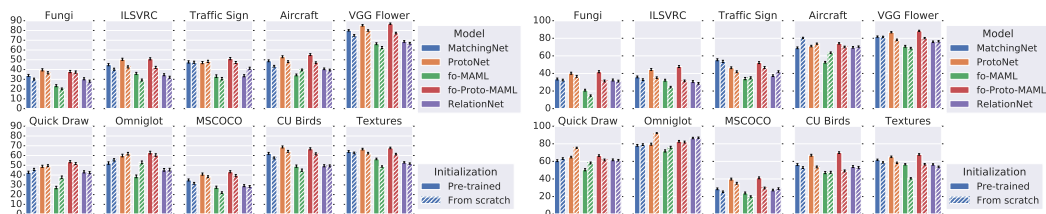
Validation Another design choice was to perform validation on (the validation split of) ImageNet only, ignoring the validation sets of the other datasets. The rationale behind this choice is that the performance on ImageNet has been known to be a good proxy for the performance on different datasets. We used this validation performance to select our hyperparameters, including backbone architectures, image resolutions and model-specific ones. We describe these further in the Appendix.

Pre-training We gave each meta-learner the opportunity to initialize its embedding function from the embedding weights to which the k -NN Baseline model trained on ImageNet converged to. We treated the choice of starting from scratch or starting from this initialization as a hyperparameter.

Table 1: Few-shot classification results on META-DATASET using models **trained on ILSVRC-2012 only (top)** and **trained on all datasets (bottom)**.

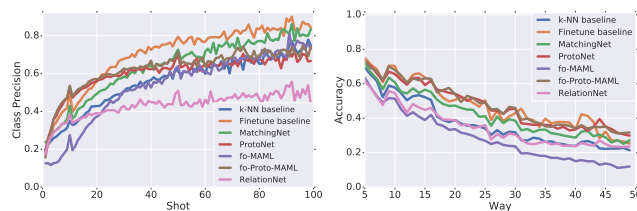
Test Source	k -NN	Finetune	MatchingNet	ProtoNet	fo-MAML	Relation Net	fo-Proto-MAML
ILSVRC	41.03	44.83	45.00	50.50	36.09	34.69	51.01
Omniglot	37.07	59.29	52.27	59.98	38.67	45.35	63.00
Aircraft	46.81	67.89	48.97	53.10	34.50	40.73	55.31
Birds	50.13	57.91	62.21	68.79	49.10	49.51	66.87
Textures	66.36	68.53	64.15	66.56	56.50	52.97	67.75
Quick Draw	32.06	43.21	42.87	48.96	27.24	43.30	53.70
Fungi	36.16	37.95	33.97	39.71	23.50	30.55	37.97
VGG Flower	83.10	85.14	80.13	85.27	66.42	68.76	86.86
Traffic Signs	44.59	67.08	47.80	47.12	33.23	33.67	51.19
MSCOCO	30.38	36.05	34.99	41.00	27.52	29.15	43.41
Avg. rank	5	2.7	4.1	2.2	6.7	5.8	1.5

Test Source	k -NN	Finetune	MatchingNet	ProtoNet	fo-MAML	Relation Net	fo-Proto-MAML
ILSVRC	38.55	43.08	36.08	44.50	32.36	30.89	47.85
Omniglot	74.60	71.11	78.25	79.56	71.91	86.57	82.86
Aircraft	64.98	72.03	69.17	71.14	52.76	69.71	74.24
Birds	66.35	59.82	56.40	67.01	47.24	54.14	69.97
Textures	63.58	69.14	61.80	65.18	56.66	56.56	67.94
Quick Draw	44.88	47.05	60.81	64.88	50.50	61.75	66.57
Fungi	37.12	38.16	33.70	40.26	21.02	32.56	41.99
VGG Flower	83.47	85.28	81.90	86.85	70.93	76.08	88.45
Traffic Signs	40.11	66.74	55.57	46.48	34.18	37.48	52.32
MSCOCO	29.55	35.17	28.79	39.87	24.05	27.41	41.29
Avg. rank	4.6	3.3	4.5	2.5	6.5	5.2	1.4



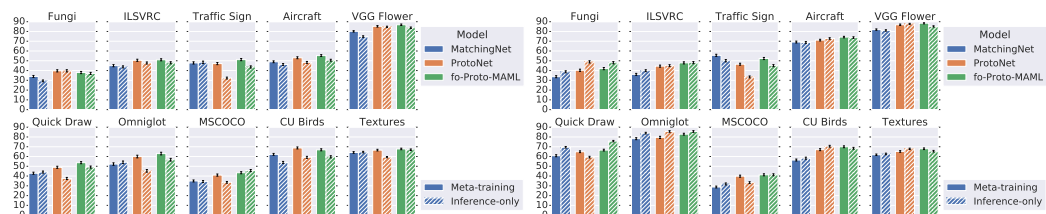
(a) Effect of pre-training (ImageNet)

(b) Effect of pre-training (All datasets)



(c) Shots analysis (ImageNet)

(d) Ways analysis (ImageNet)



(e) Effect of meta-learning (ImageNet)

(f) Effect of meta-learning (All datasets)

Figure 1: Analyses. (ImageNet) or (All datasets) in the caption denotes the training source.

For a fair comparison with the baselines, we allowed the non-episodic models to start from this initialization too. This is especially important for the baselines in the case of training on all datasets since it offers the opportunity to start from ImageNet-pretrained weights.

Main results Table 1 displays the accuracy of each model on the test set of each dataset, after they were training on ImageNet-only or all datasets. Traffic Signs and MSCOCO are not used for training in either case, as they are reserved for evaluation. We propose to use the average (over the datasets) rank of each method as our metric for comparison, where smaller is better. A method receives rank 1 if it has the highest accuracy, rank 2 if it has the second highest, and so on. If two models share the best accuracy, they both get rank 1.5, and so on. We find that fo-Proto-MAML is the top-performer according to this metric, the Finetune Baseline notably presents a worthy opponent, while fo-MAML, to our surprise, performs quite poorly on META-DATASET. We include more detailed versions of these tables displaying confidence intervals and per-dataset ranks in the Appendix.

Ways and shots analysis We further study the accuracy as a function of ‘ways’ (Figure 1d) and the class precision as a function of ‘shots’ (Figure 1c). As expected, we found that the difficulty increases as the way increases, and performance degrades. More examples per class, on the other hand, indeed make it easier to correctly classify that class. Interestingly, though, not all models benefit at the same rate from more data: Prototypical Networks and fo-Proto-MAML outshine other models in very-low-shot settings but saturate faster, whereas the Finetune baseline, Matching Networks, and fo-MAML improve at a higher rate when the shot increases. We draw the same conclusions when performing this analysis on all datasets, and include those plots in the Appendix.

Effect of pre-training In Figures 1a and 1b, we quantify how beneficial it is to initialize the embedding network of meta-learners using the pre-trained weights of the k -NN baseline trained on ImageNet, as opposed to starting their episodic training from scratch. When training on ImageNet only, we find that pre-training is generally useful, though interestingly the resulting solution is less apt for generalizing to significantly different sources such as Omniglot and Quickdraw. On the other hand, using this pre-trained initialization sometimes hurts when training on all datasets. Perhaps this is because it’s challenging to sufficiently modify that ImageNet-converged solution to take into account the other datasets during training.

Effect of meta-training We propose to disentangle the inference algorithm of each meta-learner from the fact that it is meta-learned, to assess the benefit of meta-learning in META-DATASET. To this end, we propose a new set of baselines: ‘Prototypical Networks Inference’, ‘Matching Networks Inference’ and ‘fo-Proto-MAML Inference’ that are trained non-episodically but validate (and test) episodically using the inference algorithm of the respective meta-learner. This is possible for these meta-learners as they don’t have any additional parameters aside from the embedding function that explicitly need to be learned episodically (like the relation module of Relation Networks for example). We compare each Inference-only method to its corresponding meta-learner in Figures 1e and 1f. We find that these baselines are strong: when training on ImageNet only, we can usually observe a small benefit from meta-learning the embedding weights but this benefit often disappears when training on all datasets, in which case meta-learning sometimes actually hurts. We find this result very interesting and we believe it emphasizes the need for research on how to meta-learn across multiple diverse sources, an important challenge that META-DATASET puts forth.

Fine-grainedness analysis We use ILVRC-2012 to investigate the hypothesis that finer-grained tasks are harder than coarse-grained ones. Our findings suggest that while the test sub-graph is not rich enough to exhibit any trend, the performance on the train sub-graph does seem to agree with this hypothesis. We include the experimental setup and results for this analysis in the Appendix.

6 CONCLUSION

We have introduced a new large-scale, diverse, and realistic environment for few-shot classification. We believe that our exploration of various models on META-DATASET has uncovered interesting directions for future work pertaining to meta-learning across heterogeneous data: it remains unclear what is the best strategy for creating training episodes, the most appropriate validation creation and the most appropriate initialization. Current models don’t always improve when trained on multiple sources and meta-learning is not always beneficial across datasets. Current models are also not robust to the amount of data in test episodes, each excelling in a different part of the spectrum. We believe that addressing these shortcomings constitutes an important research goal moving forward.

REFERENCES

- Antreas Antoniou, Harrison Edwards, and Amos Storkey. How to train your MAML. In *Proceedings of the International Conference on Learning Representations*, 2019.
- Luca Bertinetto, Joao F. Henriques, Philip Torr, and Andrea Vedaldi. Meta-learning with differentiable closed-form solvers. In *Proceedings of the International Conference on Learning Representations*, 2019.
- Wei-Yu Chen, Yen-Cheng Liu, Zsolt Kira, Yu-Chiang Frank Wang, and Jia-Bin Huang. A closer look at few-shot classification. In *Proceedings of the International Conference on Learning Representations*, 2019.
- M. Cimpoi, S. Maji, I. Kokkinos, S. Mohamed, and A. Vedaldi. Describing textures in the wild. In *IEEE Conference on Computer Vision and Pattern Recognition*, 2014.
- Guneet S. Dhillon, Pratik Chaudhari, Avinash Ravichandran, and Stefano Soatto. A baseline for few-shot image classification. *arXiv*, abs/1909.02729, 2019.
- Chelsea Finn, Pieter Abbeel, and Sergey Levine. Model-agnostic meta-learning for fast adaptation of deep networks. In *Proceedings of the International Conference of Machine Learning*, 2017.
- Spyros Gidaris and Nikos Komodakis. Dynamic few-shot visual learning without forgetting. In *IEEE Conference on Computer Vision and Pattern Recognition*, 2018.
- Bharath Hariharan and Ross Girshick. Low-shot visual recognition by shrinking and hallucinating features. In *Proceedings of the IEEE International Conference on Computer Vision*, pp. 3018–3027, 2017.
- Sebastian Houben, Johannes Stallkamp, Jan Salmen, Marc Schlipsing, and Christian Igel. Detection of traffic signs in real-world images: The German Traffic Sign Detection Benchmark. In *International Joint Conference on Neural Networks*, 2013.
- Jonas Jongejan, Henry Rowley, Takashi Kawashima, Jongmin Kim, and Nick Fox-Gieg. The Quick, Draw! – A.I. experiment. quickdraw.withgoogle.com, 2016.
- Alex Krizhevsky et al. Learning multiple layers of features from tiny images. Technical report, University of Toronto, 2009.
- Brenden M Lake, Ruslan Salakhutdinov, and Joshua B Tenenbaum. Human-level concept learning through probabilistic program induction. *Science*, 350(6266):1332–1338, 2015.
- Tsung-Yi Lin, Michael Maire, Serge Belongie, James Hays, Pietro Perona, Deva Ramanan, Piotr Dollár, and C Lawrence Zitnick. Microsoft COCO: Common objects in context. In *European Conference on Computer Vision*, pp. 740–755, 2014.
- Subhransu Maji, Esa Rahtu, Juho Kannala, Matthew Blaschko, and Andrea Vedaldi. Fine-grained visual classification of aircraft. *arXiv*, abs/1306.5151, 2013.
- Nikhil Mishra, Mostafa Rohaninejad, Xi Chen, and Pieter Abbeel. A simple neural attentive meta-learner. In *Proceedings of the International Conference on Learning Representations*, 2018.
- Tsendsuren Munkhdalai and Hong Yu. Meta networks. In *Proceedings of the International Conference on Machine Learning*, pp. 2554–2563, 2017.
- M-E. Nilsback and A. Zisserman. Automated flower classification over a large number of classes. In *Proceedings of the Indian Conference on Computer Vision, Graphics and Image Processing*, 2008.
- Boris N. Oreshkin, Pau Rodriguez, and Alexandre Lacoste. TADAM: Task dependent adaptive metric for improved few-shot learning. In *Advances in Neural Information Processing Systems*, pp. 719–729, 2018.
- Hang Qi, Matthew Brown, and David G Lowe. Low-shot learning with imprinted weights. In *Proceedings of the IEEE Conference on Computer Vision and Pattern Recognition*, pp. 5822–5830, 2018.

- Sachin Ravi and Hugo Larochelle. Optimization as a model for few-shot learning. In *Proceedings of the International Conference on Learning Representations*, 2017.
- Mengye Ren, Eleni Triantafillou, Sachin Ravi, Jake Snell, Kevin Swersky, Joshua B Tenenbaum, Hugo Larochelle, and Richard S Zemel. Meta-learning for semi-supervised few-shot classification. In *Proceedings of the International Conference on Learning Representations*, 2018.
- Olga Russakovsky, Jia Deng, Hao Su, Jonathan Krause, Sanjeev Satheesh, Sean Ma, Zhiheng Huang, Andrej Karpathy, Aditya Khosla, Michael Bernstein, Alexander C Berg, and Li Fei-Fei. Imagenet large scale visual recognition challenge. *International Journal of Computer Vision*, 115(3):211–252, 2015.
- Andrei A. Rusu, Dushyant Rao, Jakub Sygnowski, Oriol Vinyals, Razvan Pascanu, Simon Osindero, and Raia Hadsell. Meta-learning with latent embedding optimization. In *Proceedings of the International Conference on Learning Representations*, 2019.
- Tim Salimans and Durk P Kingma. Weight normalization: A simple reparameterization to accelerate training of deep neural networks. In *Advances in Neural Information Processing Systems*, pp. 901–909, 2016.
- Adam Santoro, Sergey Bartunov, Matthew Botvinick, Daan Wierstra, and Timothy Lillicrap. Meta-learning with memory-augmented neural networks. In *Proceedings of the International Conference on Machine Learning*, pp. 1842–1850, 2016.
- Victor Garcia Satorras and Joan Bruna Estrach. Few-shot learning with graph neural networks. In *Proceedings of the International Conference on Learning Representations*, 2018.
- Britig Schroeder and Yin Cui. FGVCx fungi classification challenge 2018. github.com/visipedia/fgvcx_fungi_comp, 2018.
- Jake Snell, Kevin Swersky, and Richard Zemel. Prototypical networks for few-shot learning. In *Advances in Neural Information Processing Systems*, pp. 4077–4087, 2017.
- Flood Sung, Yongxin Yang, Li Zhang, Tao Xiang, Philip HS Torr, and Timothy M Hospedales. Learning to compare: Relation network for few-shot learning. In *Proceedings of the IEEE Conference on Computer Vision and Pattern Recognition*, pp. 1199–1208, 2018.
- Oriol Vinyals, Charles Blundell, Tim Lillicrap, and Daan Wierstra. Matching networks for one shot learning. In *Advances in Neural Information Processing Systems*, pp. 3630–3638, 2016.
- C. Wah, S. Branson, P. Welinder, P. Perona, and S. Belongie. The Caltech-UCSD Birds-200-2011 Dataset. Technical Report CNS-TR-2011-001, California Institute of Technology, 2011.
- Yu-Xiong Wang and Martial Hebert. Learning to learn: Model regression networks for easy small sample learning. In *European Conference on Computer Vision*, pp. 616–634. Springer, 2016.
- Yu-Xiong Wang, Deva Ramanan, and Martial Hebert. Learning to model the tail. In *Advances in Neural Information Processing Systems*, pp. 7029–7039, 2017.
- Yu-Xiong Wang, Ross Girshick, Martial Hebert, and Bharath Hariharan. Low-shot learning from imaginary data. In *Proceedings of the IEEE Conference on Computer Vision and Pattern Recognition*, pp. 7278–7286, 2018.
- Jaesik Yoon, Taesup Kim, Ousmane Dia, Sungwoong Kim, Yoshua Bengio, and Sungjin Ahn. Bayesian model-agnostic meta-learning. In *Advances in Neural Information Processing Systems*, 2018.

APPENDIX

.1 RECOMMENDATION FOR REPORTING RESULTS ON META-DATASET

We recommend that future work on META-DATASET reports two sets of results:

1. The main tables storing the average (over 600 test episodes) accuracy of each method on each dataset, after it had been trained on ImageNet only and on All datasets, where the evaluation metric is the average rank. This corresponds to Table 1 in our case (or the more complete version in Table 2 in the Appendix).
2. The plots that measure robustness in variations of shots and ways. In our case these are Figures 1c and 1d in the main text for ImageNet-only training, and Figures 3b and 3a in the Appendix for the case of training on all datasets.

We propose to use both of these aspects to evaluate performance on META-DATASET: it is not only desirable to perform well on average, but also to perform well under different specifications of test tasks, as it is not realistic in general to assume that we will know in advance what setup (number of ways and shots) will be encountered at test time. Our final source code will include scripts for generating these plots and for automatically computing ranks given a table to help standardize the procedure for reporting results.

.2 DETAILS OF META-DATASET’S SAMPLING ALGORITHM

We now provide a complete description of certain steps that were explained on a higher level in the main paper.

STEP 1: SAMPLING THE EPISODE’S CLASS SET.

ImageNet class sampling. The procedure we use for sampling classes for an ImageNet episode is the following. First, we sample a node uniformly at random from the set of ‘eligible’ nodes of the DAG structure corresponding to the specified split (train, validation or test). An internal node is ‘eligible’ for this selection if it spans at least 5 leaves, but no more than 392 leaves. The number 392 was chosen because it is the smallest number so that, collectively, all eligible internal nodes span all leaves in the DAG. Once an eligible node is selected, some of the leaves that it spans will constitute the classes of the episode. Specifically, if the number of those leaves is no greater than 50, we use all of them. Otherwise, we randomly choose 50 of them.

This procedure enables the creation of tasks of varying degrees of fine-grainedness. For instance, if the sampled internal node has a small height, the leaf classes that it spans will represent semantically-related concepts, thus posing a fine-grained classification task. As the height of the sampled node increases, we ‘zoom out’ to consider a broader scope from which we sample classes and the resulting episodes are more coarse-grained.

STEP 2: SAMPLING THE EPISODE’S EXAMPLES

a) Computing the query set size. The query set is class-balanced, reflecting the fact that we care equally to perform well on all classes of an episode. The number of query images *per class* is computed as:

$$q = \min \left\{ 10, \left(\min_{c \in \mathcal{C}} \lfloor 0.5 * |Im(c)| \rfloor \right) \right\}$$

where \mathcal{C} is the set of selected classes and $Im(c)$ denotes the set of images belonging to class c . The min over classes ensures that each class has at least q images to add to the query set, thus allowing it to be class-balanced. The 0.5 multiplier ensures that enough images of each class will be available to add to the support set, and the minimum with 10 prevents the query set from being too large.

b) Computing the support set size. We compute the total support set size as:

$$|\mathcal{S}| = \min \left\{ 500, \sum_{c \in \mathcal{C}} \lceil \beta \min\{100, |Im(c)| - q\} \rceil \right\}$$

where β is a scalar sampled uniformly from interval $(0, 1]$. Intuitively, each class on average contributes either all its remaining examples (after placing q of them in the query set) if there are less than 100 or 100 otherwise, to avoid having too large support sets. The multiplication with β enables the potential generation of smaller support sets even when multiple images are available, since we are also interested in examining the very-low-shot end of the spectrum. The ‘ceiling’ operation ensures that each selected class will have at least one image in the support set. Finally, we cap the total support set size to 500.

c) Computing the shot of each class. We are now ready to compute the ‘shot’ of each class. Specifically, the proportion of the support set that will be devoted to class c is computed as:

$$R_c = \frac{\exp(\alpha_c)|Im(c)|}{\sum_{c' \in \mathcal{C}} \exp(\alpha_{c'})|Im(c')|}$$

where α_c is sampled uniformly from the interval $[\log(0.5), \log(2))$. Intuitively, the un-normalized proportion of the support set that will be occupied by class c is a noisy version of the total number of images of that class in the dataset $Im(c)$. This design choice is made in the hopes of obtaining realistic class ratios, under the hypothesis that the dataset class statistics are a reasonable approximation of the real-world statistics of appearances of the corresponding classes. The shot of a class c is then set to:

$$k_c = \min \{ \lfloor R_c * (|\mathcal{S}| - |\mathcal{C}|) \rfloor + 1, |Im(c)| - q \}$$

which ensures that at least one example is selected for each class, with additional examples selected proportionally to R_c , if enough are available.

3 DATASETS

META-DATASET is formed of data originating from 10 different image datasets. A complete list of the datasets we use is the following.

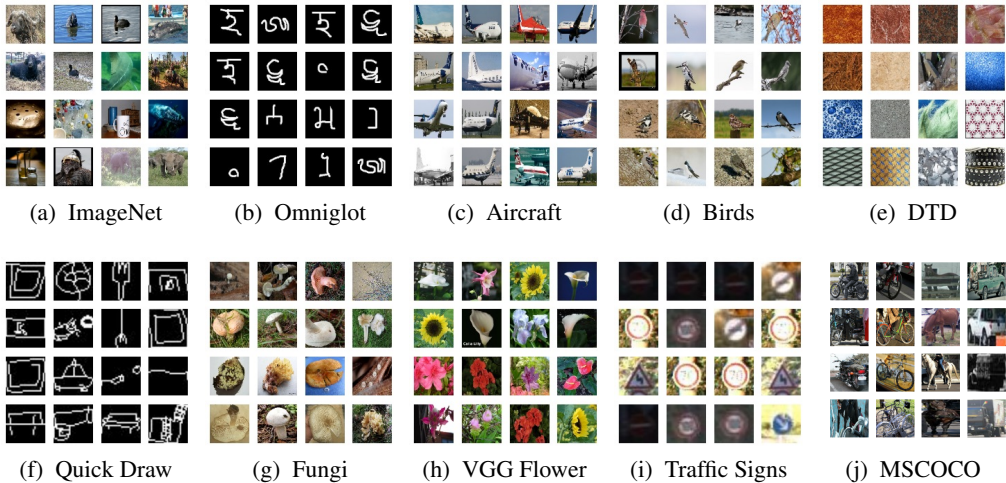


Figure 2: Training examples taken from the various datasets forming META-DATASET.

ILSVRC-2012 (ImageNet, Russakovsky et al., 2015) A dataset of natural images from 1000 categories (Figure 2a). We removed some images that were duplicates of images in another dataset in META-DATASET (43 images that were also part of Birds) or other standard datasets of interest (92 from Caltech-101 and 286 from Caltech-256). The complete list of duplicates is part of the source code release.

Omniglot (Lake et al., 2015) A dataset of images of 1623 handwritten characters from 50 different alphabets, with 20 examples per class (Figure 2b). While recently Vinyals et al. (2016) proposed a

new split for this dataset, we instead make use of the original intended split Lake et al. (2015) which is more challenging since the split is on the level of alphabets (30 training alphabets and 20 evaluation alphabets), not characters from those alphabets, therefore posing a more challenging generalization problem. Out of the 30 training alphabets, we hold out the 5 smallest ones (i.e. with the least number of character classes) to form our validation set, and use the remaining 25 for training.

Aircraft (Maji et al., 2013) A dataset of images of aircrafts spanning 102 model variants, with 100 images per class (Figure 2c).

CUB-200-2011 (Birds, Wah et al., 2011) A dataset for fine-grained classification of 200 different bird species. (Figure 2d).

Describable Textures (DTD, Cimpoi et al., 2014) A texture database, consisting of 5640 images, organized according to a list of 47 terms (categories) inspired from human perception. (Figure 2e).

Quick Draw (Jongejan et al., 2016) A dataset of 50 million black-and-white drawings across 345 categories, contributed by players of the game Quick, Draw! (Figure 2f).

Fungi (Schroeder & Cui, 2018) A large dataset of approximately 100K images of nearly 1,500 wild mushrooms species (Figure 2g).

VGG Flower (Nilsback & Zisserman, 2008) A dataset of natural images of 102 flower categories. The flowers chosen to be ones commonly occurring in the United Kingdom. Each class consists of between 40 and 258 images. (Figure 2h).

Traffic Signs (Houben et al., 2013) A dataset of 50,000 images of German road signs in 43 classes (Figure 2i).

MSCOCO Lin et al. (2014) A dataset of images collected from Flickr with 1.5 million object instances belonging to 80 classes labelled and localized using bounding boxes. We choose the train2017 split and create images crops from original images using each object instance’s groundtruth bounding box. (Figure 2j).

.4 HYPERPARAMETERS

We used three architectures: a commonly-used four-layer convolutional network, an 18-layer residual network and a wide residual network. While some of the baseline models performed best with the latter, we noticed that the meta-learners preferred the resnet-18 backbone and rarely the four-layer-convnet. For Relation Networks only, we also allow the option to use another architecture, aside from the aforementioned three, inspired by the four-layer-convnet used in the Relation Networks paper (Sung et al., 2018). The main difference is that they omit the usual max-pooling operation, yielding activations of larger spatial dimensions. In our case, we found that these increased spatial dimensions did not fit in memory, so as a compromise we added max-pooling only to the first 3 out of the 4 layer of the convnet.

For fo-MAML and fo-Proto-MAML, we tuned the inner-loop learning rate, the number of inner loop steps, and the number of additional such steps to be performed in evaluation (i.e. validation or test) episodes.

For the baselines, we tuned whether the cosine classifier of Baseline++ will be used, as opposed to a standard forward pass through a linear classification layer. Also, since Chen et al. (2019) added weight normalization (Salimans & Kingma, 2016) to their implementation of the cosine classifier layer, we also implemented this and created a hyperparameter choice for whether or not it is enabled. This hyperparameter is independent from the one that decides if the cosine classifier is used. Both are applicable to the k -NN Baseline (for its all-way training classification task) and to the Finetune Baseline (both for its all-way training classification and for its within-episode classification at validation and test times). For the Finetune Baseline, we tuned a binary hyperparameter deciding if gradient descent or ADAM is used for the within-task optimization. We also tuned the decision of

whether all embedding layers are finetuned or, alternatively, the embedding is held fixed and only the linear layer on top of it is optimized. Finally, we tuned the number of finetuning steps that will be carried out.

We also tried two different image resolutions: the commonly-used 84x84 and 126x126. Finally, we tuned the learning rate schedule and weight decay and we used ADAM to train all of our models. All other details, dataset splits and the complete set of best hyperparameters discovered for each model are included in the source code.

.5 COMPLETE MAIN RESULTS AND RANK COMPUTATION

Rank computation We rank models by decreasing order of accuracy and handle ties by assigning tied models the average of their ranks. A tie between two models occurs when a 95% confidence interval statistical test on the difference between their mean accuracies is inconclusive in rejecting the null hypothesis that this difference is 0. We ended up not observing any such ties in the set of accuracies of our experiments, but our recommendation is that this test is ran to determine this. As mentioned earlier, our source code will include this computation.

Complete main tables For completeness, Table 2 presents a more detailed version of Table 1 that also displays confidence intervals and per-dataset ranks computed using the above procedure.

.6 ANALYSIS OF PERFORMANCE ACROSS SHOTS AND WAYS

For completeness, in Figure 3 we show the results of the analysis of the robustness to different ways and shots for the variants of the models that were trained on all datasets. We observe the same trends as discussed in our Experiments section for the variants of the models that were trained on ImageNet.

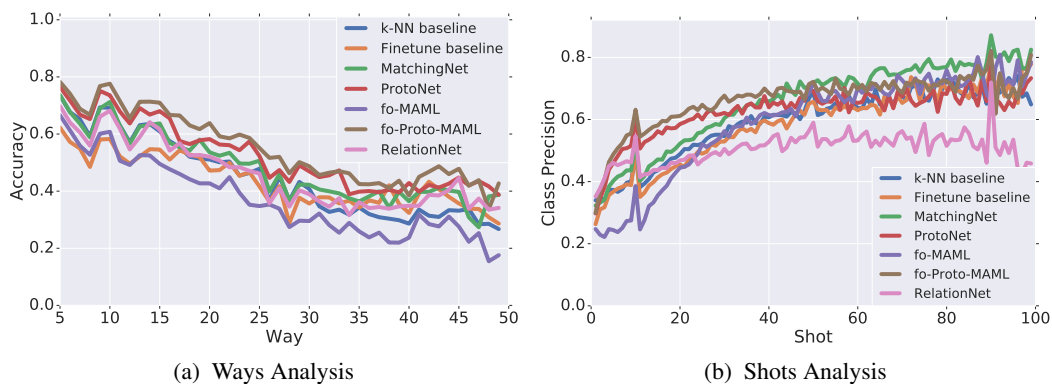


Figure 3: Analysis of performance as a function of the episode’s way, shots for models whose training source is (the training data of) all datasets.

.7 EFFECT OF TRAINING ON ALL DATASETS OVER TRAINING ON ILSVRC-2012 ONLY

For more clearly observing whether training on all datasets leads to improved generalization over training on ImageNet only, Figure 4 shows side-to-side the performance of each model trained on ILSVRC only vs. all datasets.

We also computed the ‘element-wise’ difference between the main tables of results (trained on all datasets - trained on ImageNet only). These differences are shown in Figure 5. A positive entry indicates that the test performance on the corresponding datasets improved when using the variant of the corresponding model that was trained on all training sources.

We notice that we do not always observe a clear generalization advantage in training from a wider collection of image datasets. While some of the datasets that were added to the meta-training phase did see an improvement across all models, in particular for Omniglot and Quick Draw, this was

Table 2: Few-shot classification results on META-DATASET.

(a) Models trained on ILSVRC-2012 only.

Test Source	k -NN	Finetune	Method: Accuracy (%) \pm confidence (%)				
			MatchingNet	ProtoNet	fo-MAML	Relation Net	
ILSVRC	41.03 \pm 1.01 (5)	44.83 \pm 1.10 (4)	45.00 \pm 1.10 (3)	50.50 \pm 1.08 (2)	36.09 \pm 1.01 (6)	34.69 \pm 1.01 (7)	51.01 \pm 1.05 (1)
Omniglot	37.07 \pm 1.15 (7)	59.29 \pm 1.54 (3)	52.27 \pm 1.28 (4)	59.98 \pm 1.35 (2)	38.67 \pm 1.39 (6)	45.35 \pm 1.36 (5)	63.00 \pm 1.35 (1)
Aircraft	46.81 \pm 0.89 (5)	67.89 \pm 1.29 (1)	48.97 \pm 0.93 (4)	53.10 \pm 1.00 (3)	34.50 \pm 0.90 (7)	40.73 \pm 0.83 (6)	55.31 \pm 0.96 (2)
Birds	50.13 \pm 1.00 (5)	57.91 \pm 1.25 (4)	62.21 \pm 0.95 (3)	68.79 \pm 1.01 (1)	49.10 \pm 1.18 (7)	49.51 \pm 1.05 (6)	66.87 \pm 1.04 (2)
Textures	66.36 \pm 0.75 (4)	68.53 \pm 0.84 (1)	64.15 \pm 0.85 (5)	66.56 \pm 0.83 (3)	56.50 \pm 0.80 (6)	52.97 \pm 0.69 (7)	67.75 \pm 0.78 (2)
Quick Draw	32.06 \pm 1.08 (6)	43.21 \pm 1.25 (4)	42.87 \pm 1.09 (5)	48.96 \pm 1.08 (2)	27.24 \pm 1.24 (7)	43.30 \pm 1.08 (3)	53.70 \pm 1.06 (1)
Fungi	36.16 \pm 1.02 (4)	37.95 \pm 1.08 (3)	33.97 \pm 1.00 (5)	39.71 \pm 1.11 (1)	23.50 \pm 1.00 (7)	30.55 \pm 1.04 (6)	37.97 \pm 1.11 (2)
VGG Flower	83.10 \pm 0.68 (4)	85.14 \pm 0.73 (3)	80.13 \pm 0.71 (5)	85.27 \pm 0.77 (2)	66.42 \pm 0.96 (7)	68.76 \pm 0.83 (6)	86.86 \pm 0.75 (1)
Traffic Signs	44.59 \pm 1.19 (5)	67.08 \pm 1.33 (1)	47.80 \pm 1.14 (3)	47.12 \pm 1.10 (4)	33.23 \pm 1.34 (7)	33.67 \pm 1.05 (6)	51.19 \pm 1.11 (2)
MSCOCO	30.38 \pm 0.99 (5)	36.05 \pm 1.08 (3)	34.99 \pm 1.00 (4)	41.00 \pm 1.10 (2)	27.52 \pm 1.11 (7)	29.15 \pm 1.01 (6)	43.41 \pm 1.06 (1)
Avg. rank	5	2.7	4.1	2.2	6.7	5.8	1.5

(b) Models trained on all datasets.

Test Source	k -NN	Finetune	Method: Accuracy (%) \pm confidence (%) (rank)				
			MatchingNet	ProtoNet	fo-MAML	Relation Net	
ILSVRC	38.55 \pm 0.94 (4)	43.08 \pm 1.08 (3)	36.08 \pm 1.00 (5)	44.50 \pm 1.05 (2)	32.36 \pm 1.02 (6)	30.89 \pm 0.93 (7)	47.85 \pm 1.08 (1)
Omniglot	74.60 \pm 1.08 (5)	71.11 \pm 1.37 (7)	78.25 \pm 1.01 (4)	79.56 \pm 1.12 (3)	71.91 \pm 1.20 (6)	86.57 \pm 0.79 (1)	82.86 \pm 0.94 (2)
Aircraft	64.98 \pm 0.82 (6)	72.03 \pm 1.07 (2)	69.17 \pm 0.96 (5)	71.14 \pm 0.86 (3)	52.76 \pm 0.90 (7)	69.71 \pm 0.83 (4)	74.24 \pm 0.77 (1)
Birds	66.35 \pm 0.92 (3)	59.82 \pm 1.15 (4)	56.40 \pm 1.00 (5)	67.01 \pm 1.02 (2)	47.24 \pm 1.14 (7)	54.14 \pm 0.99 (6)	69.97 \pm 0.95 (1)
Textures	63.58 \pm 0.79 (4)	69.14 \pm 0.85 (1)	61.80 \pm 0.74 (5)	65.18 \pm 0.84 (3)	56.66 \pm 0.74 (6)	56.56 \pm 0.73 (7)	67.94 \pm 0.82 (2)
Quick Draw	44.88 \pm 1.05 (7)	47.05 \pm 1.16 (6)	60.81 \pm 1.03 (4)	64.88 \pm 0.89 (2)	50.50 \pm 1.19 (5)	61.75 \pm 0.97 (3)	66.57 \pm 0.90 (1)
Fungi	37.12 \pm 1.06 (4)	38.16 \pm 1.04 (3)	33.70 \pm 1.04 (5)	40.26 \pm 1.13 (2)	21.02 \pm 0.99 (7)	32.56 \pm 1.08 (6)	41.99 \pm 1.12 (1)
VGG Flower	83.47 \pm 0.61 (4)	85.28 \pm 0.69 (3)	81.90 \pm 0.72 (5)	86.85 \pm 0.71 (2)	70.93 \pm 0.99 (7)	76.08 \pm 0.76 (6)	88.45 \pm 0.67 (1)
Traffic Signs	40.11 \pm 1.10 (5)	66.74 \pm 1.23 (1)	55.57 \pm 1.08 (2)	46.48 \pm 1.00 (4)	34.18 \pm 1.26 (7)	37.48 \pm 0.93 (6)	52.32 \pm 1.08 (3)
MSCOCO	29.55 \pm 0.96 (4)	35.17 \pm 1.08 (3)	28.79 \pm 0.96 (5)	39.87 \pm 1.06 (2)	24.05 \pm 1.10 (7)	27.41 \pm 0.89 (6)	41.29 \pm 1.03 (1)
Avg. rank	4.6	3.3	4.5	2.5	6.5	5.2	1.4

Figure 4: Accuracy on the test datasets, when training on ILSVRC only or All datasets (same results as shown in the main tables).

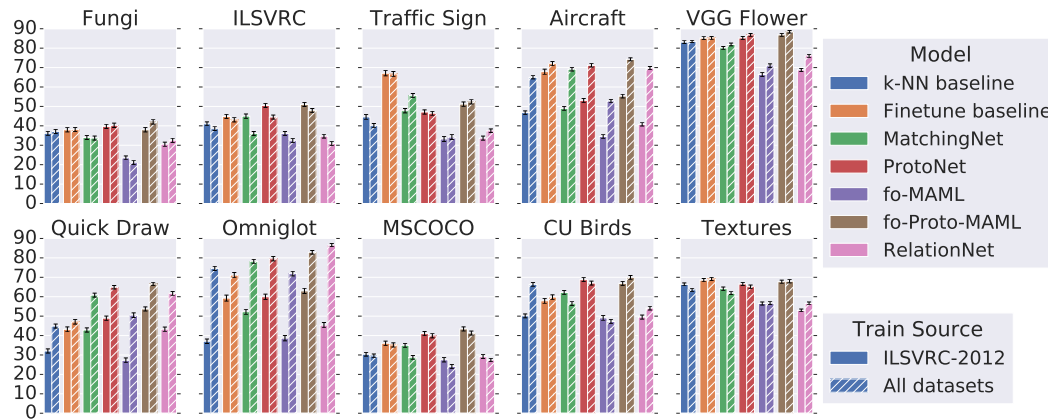


Figure 5: Accuracy improvement on the test datasets, when training on all datasets instead of ILSVRC only.

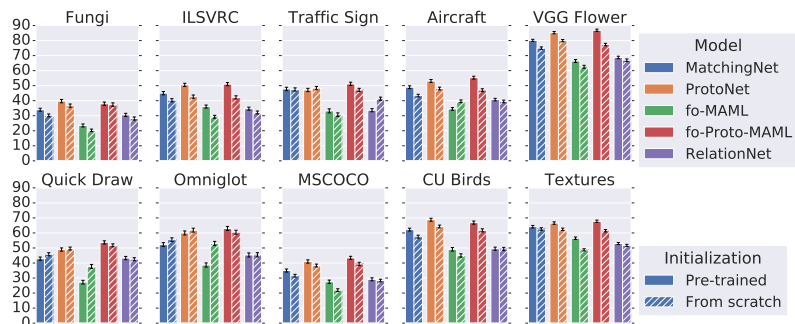


not true across the board. In fact, in certain cases the performance dropped. We believe that more successfully leveraging diverse sources of data is an interesting open research problem.

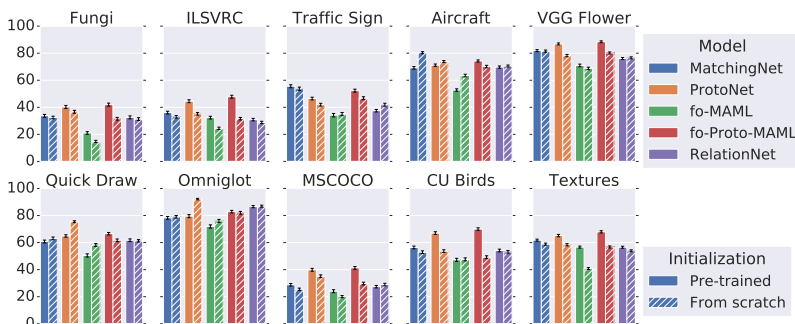
8 EFFECT OF PRE-TRAINING VERSUS TRAINING FROM SCRATCH

For each meta-learner, we selected the best model (based on validation on ImageNet’s validation split) out of the ones that used the pre-trained initialization, and the best out of the ones that trained from scratch. We then ran the evaluation of each on (the test split of) all datasets in order to quantify how beneficial this pre-trained initialization is. We performed this experiment twice: for the models that are trained on ImageNet only and for the models that are trained on (the training splits of) all datasets.

The results of this investigation were reported in the main paper in Figure 1a and Figure 1b, for ImageNet-only training and all dataset training, respectively. We show the same results in Figure 6, printed larger to facilitate viewing of error bars. For easier comparison, we also plot the difference in performance of the models that were pre-trained over the ones that weren’t, in Figures 7a and 7b. These figures make it easier to spot that while using the pre-trained solution usually helps for datasets that are visually not too different from ImageNet, it may hurt for datasets that are significantly different from it, such as Omniglot, Quickdraw (and surprisingly Aircraft). Note that these three datasets are the same three that we found benefit from training on All datasets instead of ImageNet-only. It appears that using the pre-trained solution biases the final solution to specialize on ImageNet-like datasets.



(a) ImageNet.



(b) All datasets.

Figure 6: Comparing pre-training to starting from scratch. Same plots as Figure 1a and Figure 1b, only larger.

9 EFFECT OF META-LEARNING VERSUS INFERENCE-ONLY

Figure 8 shows the same plots as in Figures 1e and 1f but printed larger to facilitate viewing of error bars. Furthermore, as we have done for visualizing the observed gain of pre-training, we also present in Figures 9a and 9b the gain observed from meta-learning as opposed to training the corresponding

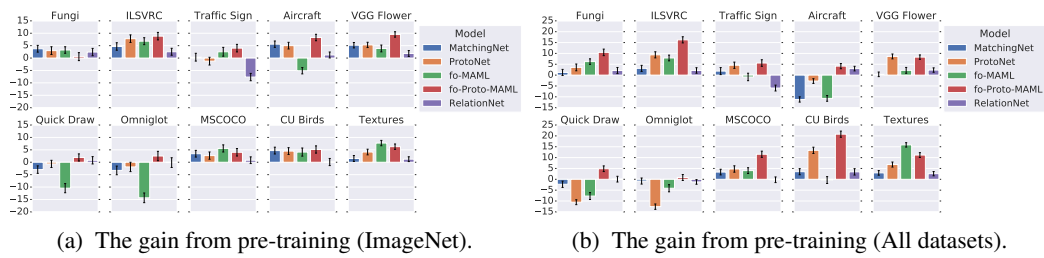


Figure 7: The performance difference of initializing the embedding weights from a pre-trained solution, before episodically training on ImageNet or all datasets, over using a random initialization of those weights. The pre-trained weights that we consider are the ones that the k -NN baseline converged to when it was trained on ImageNet. Positive values indicate that this pre-training was beneficial.

inference-only baseline, as explained in the Experiments section of the main paper. This visualization makes it clear that while meta-training usually helps on ImageNet (or doesn't hurt too much), it sometimes hurts when it is performed on all datasets, emphasizing the need for further research into best practices of meta-learning across heterogeneous sources.

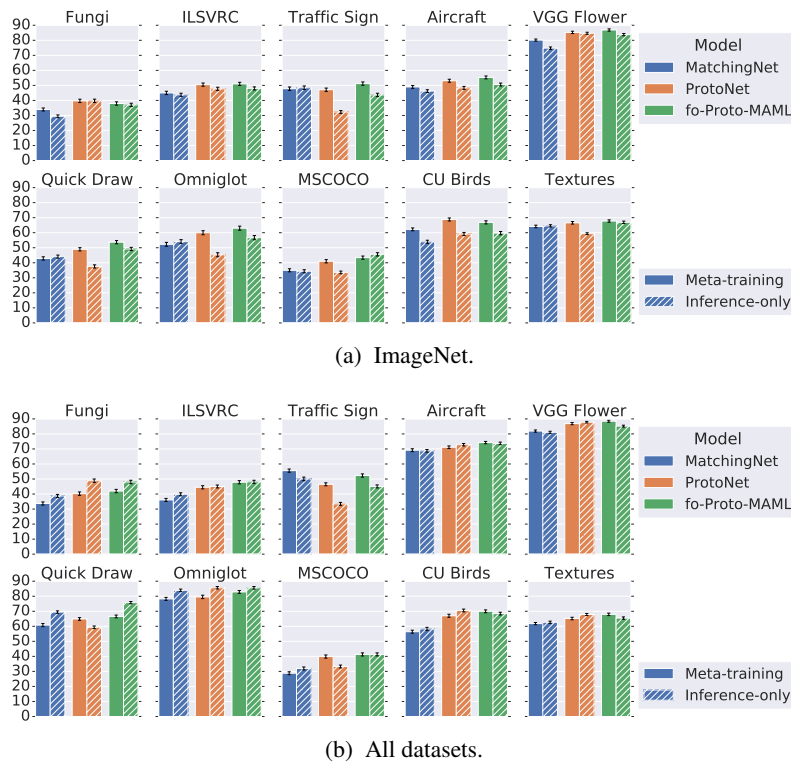


Figure 8: Comparing the meta-trained variant of meta-learners against their inference-only counterpart. Same plots as Figure 1e and Figure 1f, only larger.

10 FINEGRAINEDNESS ANALYSIS

We investigate the hypothesis that finer-grained tasks are more challenging than coarse-grained ones by creating binary ImageNet episodes with the two classes chosen uniformly at random from the DAG's set of leaves. We then define the degree of coarse-grainedness of a task as the height of the lowest common ancestor of the two chosen leaves, where the height is defined as the length of

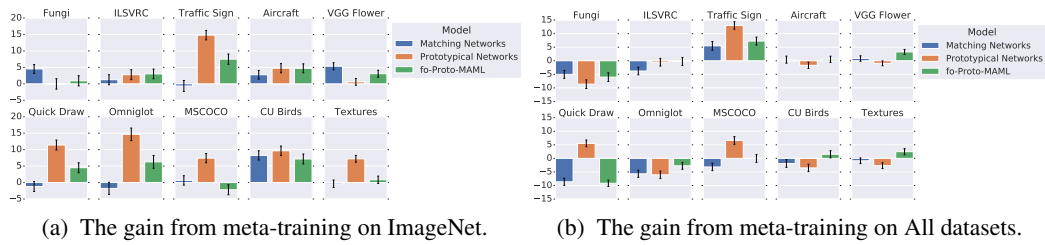


Figure 9: The performance difference of meta-learning over the corresponding inference-only baseline of each meta-learner. Positive values indicate that meta-learning was beneficial.

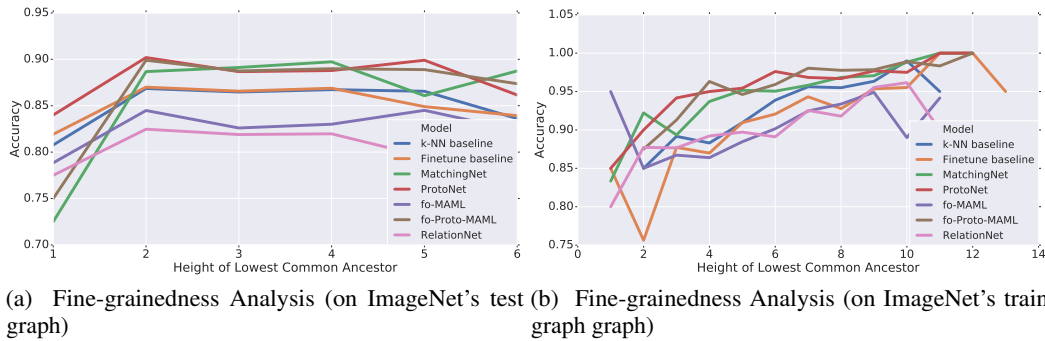


Figure 10: Analysis of performance as a function of the degree of fine-grainedness. Larger heights correspond to coarser-grained tasks.

the longest path from the lowest common ancestor to one of the selected leaves. Larger heights then correspond to coarser-grained tasks. We present these results in Figure 10. We do not detect a significant trend when performing this analysis on the test DAG. The results on the training DAG, though, do seem to indicate that our hypothesis holds to some extent. We conjecture that this may be due to the richer structure of the training DAG, but we encourage further investigation.