

Figure A: **Qualitative Results of Foreground and Alpha.** Visual comparisons with the LBS method on AIM-500. Please zoom in for optimal viewing.

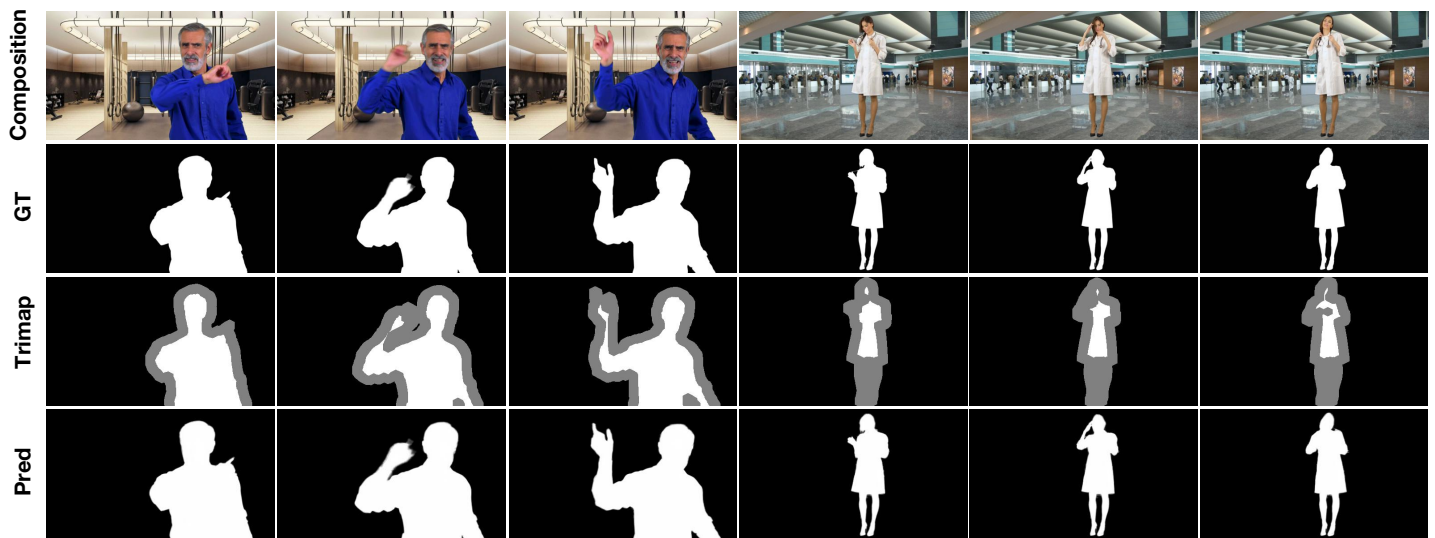


Figure B: **Qualitative Results on Video Matting Dataset.** Visual results on VideoMatte240K. Please zoom in for optimal viewing.

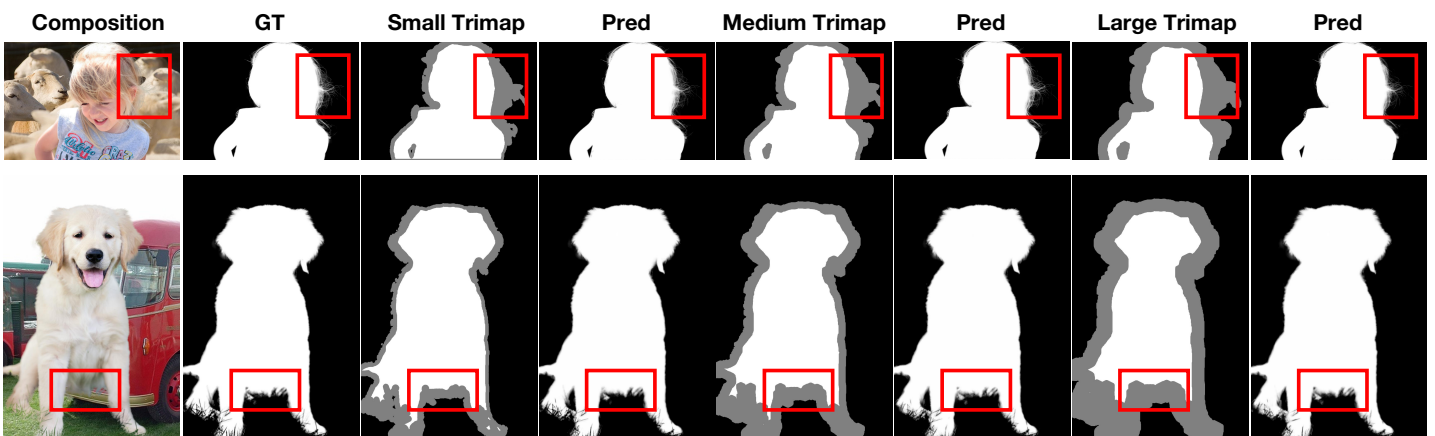


Figure C: **Qualitative Results with Different Trimap Shapes.** Visual alpha results using three different trimap types on the Composition-1k dataset. Please zoom in for optimal viewing.



Figure D: **Illustration of the Necessity of Trimap.** Demonstration with multiple foreground objects, showing how the absence of a trimap leads to confusion.