

Image Comparison Task: Evaluating Relationship Representation

Important Instructions: In this task, you will compare pairs of images and select the ONE that better represents the described relationship.

Important: Pay special attention to the exact relationship described. The direction of the relationship (which object is acting upon which) is crucial for your evaluation.

- **Focus on the relationship direction:** Pay close attention to which object is performing the action on the other. For example, in "mouse chasing cat," the mouse must be the one doing the chasing, not the other way around.
- **Relationship accuracy is key:** An image showing the opposite relationship (e.g., "cat chasing mouse" instead of "mouse chasing cat") is worse than one showing a partial relationship. For example:
 - For "mouse chasing cat": An image where the mouse is positioned behind the cat (suggesting pursuit) is better than an image where the cat is behind the mouse (showing the opposite relationship).
 - For "horse riding astronaut": An image where the horse is positioned near or above the astronaut is better than an image clearly showing an astronaut riding a horse (the opposite relationship).
- **When evaluating, consider these aspects:**
 - **Spatial relation:** Are the objects positioned correctly relative to each other? (e.g., is one object behind/in front of/above/below the other as described?)
 - **Orientation:** Are the objects facing the right direction for the described relationship?
 - **Pose:** Are the objects in positions that clearly show the described action or relationship?
 - **Expression and gaze:** Do the facial expressions and where characters are looking support the described relationship?

Note 1: Please evaluate based on relationship accuracy, not image quality or resolution.

Note 2: Only select equal if two images are highly similar.

Which image better shows: A photo of one mouse chasing one cat? Select the image that more accurately represents the exact relationship described, paying attention to which object is performing the action on the other.



Image A



Image B

Image A is better

Both are equal

Image B is better

Which image better shows: A photo of one mouse chasing one cat? Select the image that more accurately represents the exact relationship described, paying attention to which object is performing the action on the other.



Image A



Image B

[Image A is better](#)[Both are equal](#)[Image B is better](#)

Which image better shows: A photo of one mouse chasing one cat? Select the image that more accurately represents the exact relationship described, paying attention to which object is performing the action on the other.



Image A



Image B

[Image A is better](#)[Both are equal](#)[Image B is better](#)

Which image better shows: A photo of one mouse chasing one cat? Select the image that more accurately represents the exact relationship described, paying attention to which object is performing the action on the other.



Image A



Image B

[Image A is better](#)[Both are equal](#)[Image B is better](#)

Which image better shows: A photo of one mouse chasing one cat? Select the image that more accurately represents the exact relationship described, paying attention to which object is performing the action on the other.



Image A

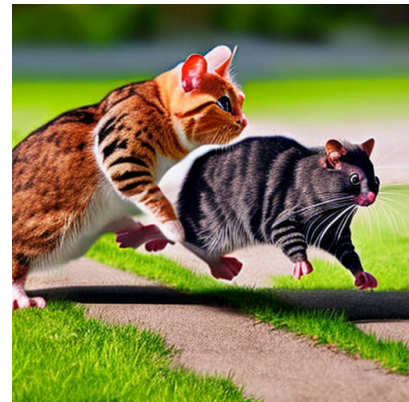


Image B

[Image A is better](#)[Both are equal](#)[Image B is better](#)

Which image better shows: A photo of one mouse chasing one cat? Select the image that more accurately represents the exact relationship described, paying attention to which object is performing the action on the other.



Image A



Image B

Which image better shows: A photo of one mouse chasing one cat? Select the image that more accurately represents the exact relationship described, paying attention to which object is performing the action on the other.



Image A



Image B

Which image better shows: A photo of one mouse chasing one cat? Select the image that more accurately represents the exact relationship described, paying attention to which object is performing the action on the other.



Image A



Image B

Image A is better

Both are equal

Image B is better

Ranking Task

Please rank all images from best (1) to worst (7) based on how well they represent: **A photo of one mouse chasing one cat**

Consider the same criteria as in the comparisons above.



Image 1 Rank:

Select rank



Image 2 Rank:

Select rank



Image 3 Rank:

Select rank



Image 4 Rank:

Select rank



Image 5 Rank:

Select rank



Image 6 Rank:

Select rank



Image 7 Rank:

Select rank

Submit HIT