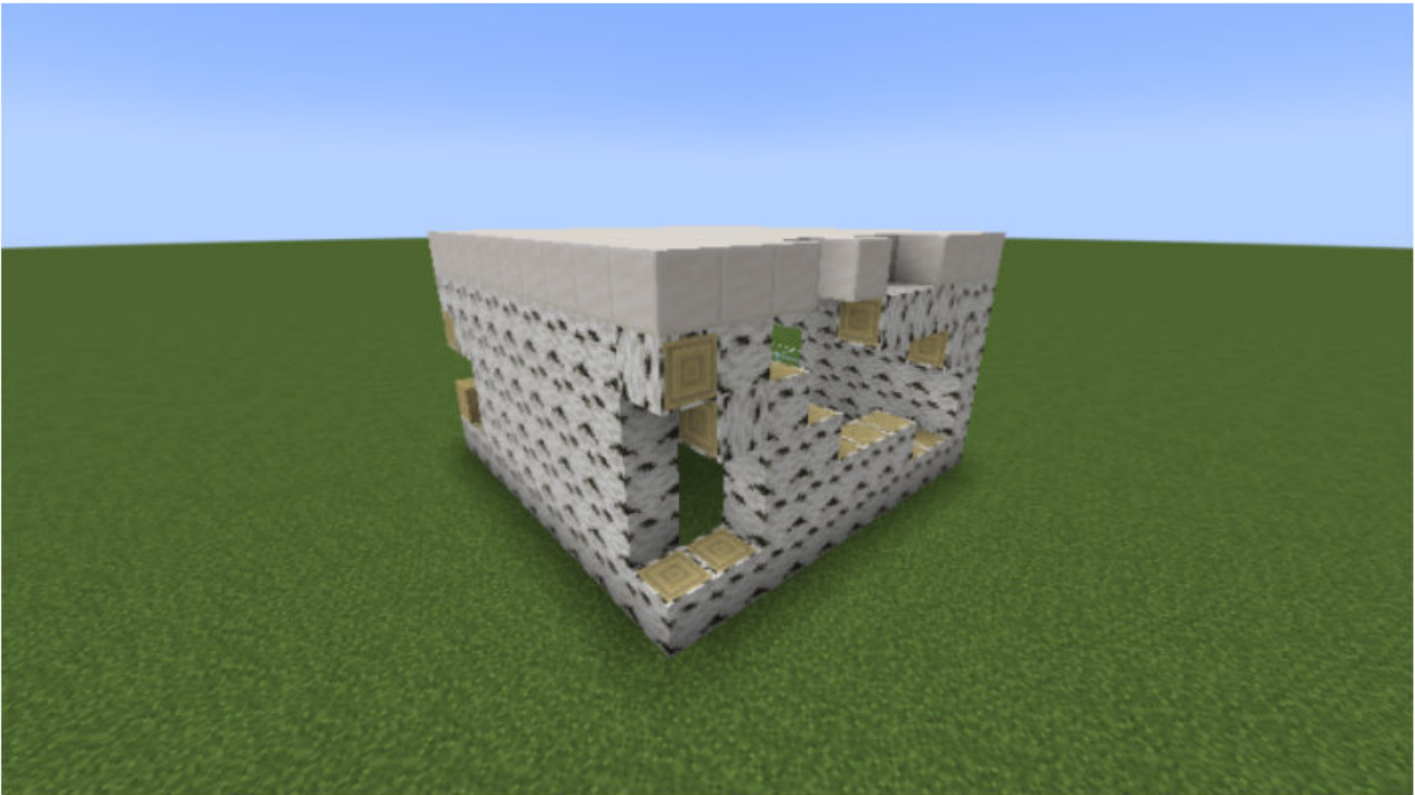


Each question has an instruction and a picture. The instruction describes the shape, style, material and other characteristics of a building, and the corresponding pictures are buildings built according to the instruction. Now, please judge from the following four aspects through your own judgment:

- 1. Correctness: Does the building match the text?
- 2. Complexity: Whether the building is overall simple or complex.
- 3. Aesthetics: Whether the appearance of the building is aesthetically pleasing.
- 4. Functionality: Whether the building meets its intended function, such as the necessary structure of the house (rooms and entrances).

A perfect score of 10 is given for each item.

* 2. A slender Minecraft tower with crystal-clear windows, predominantly crafted from birch logs.



Correctness



Complexity



Quality



Functionality

