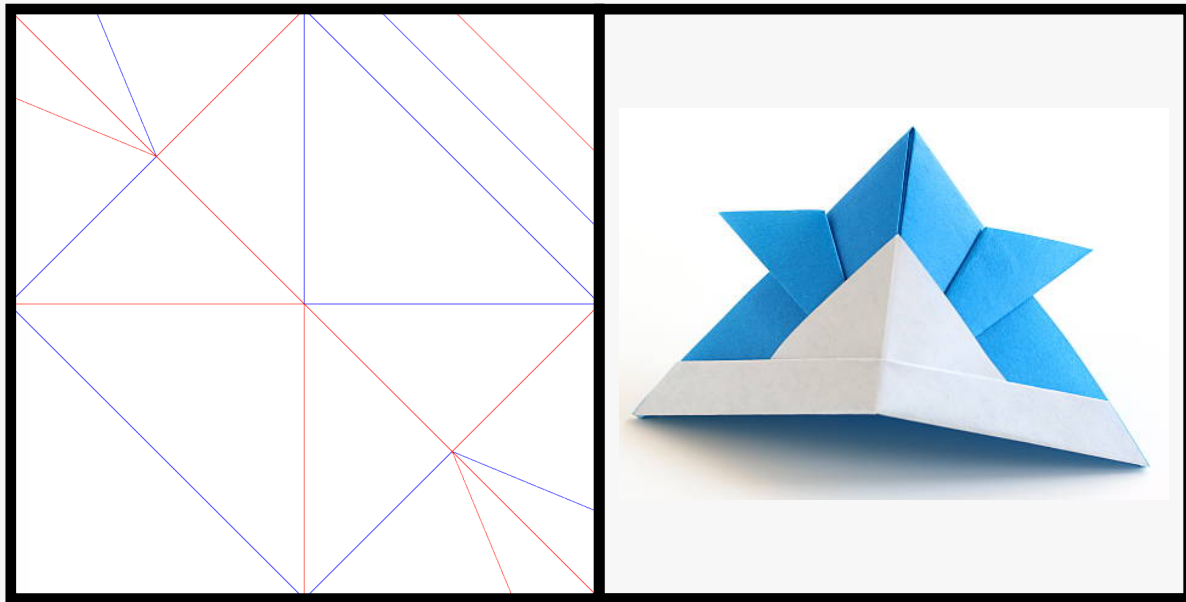


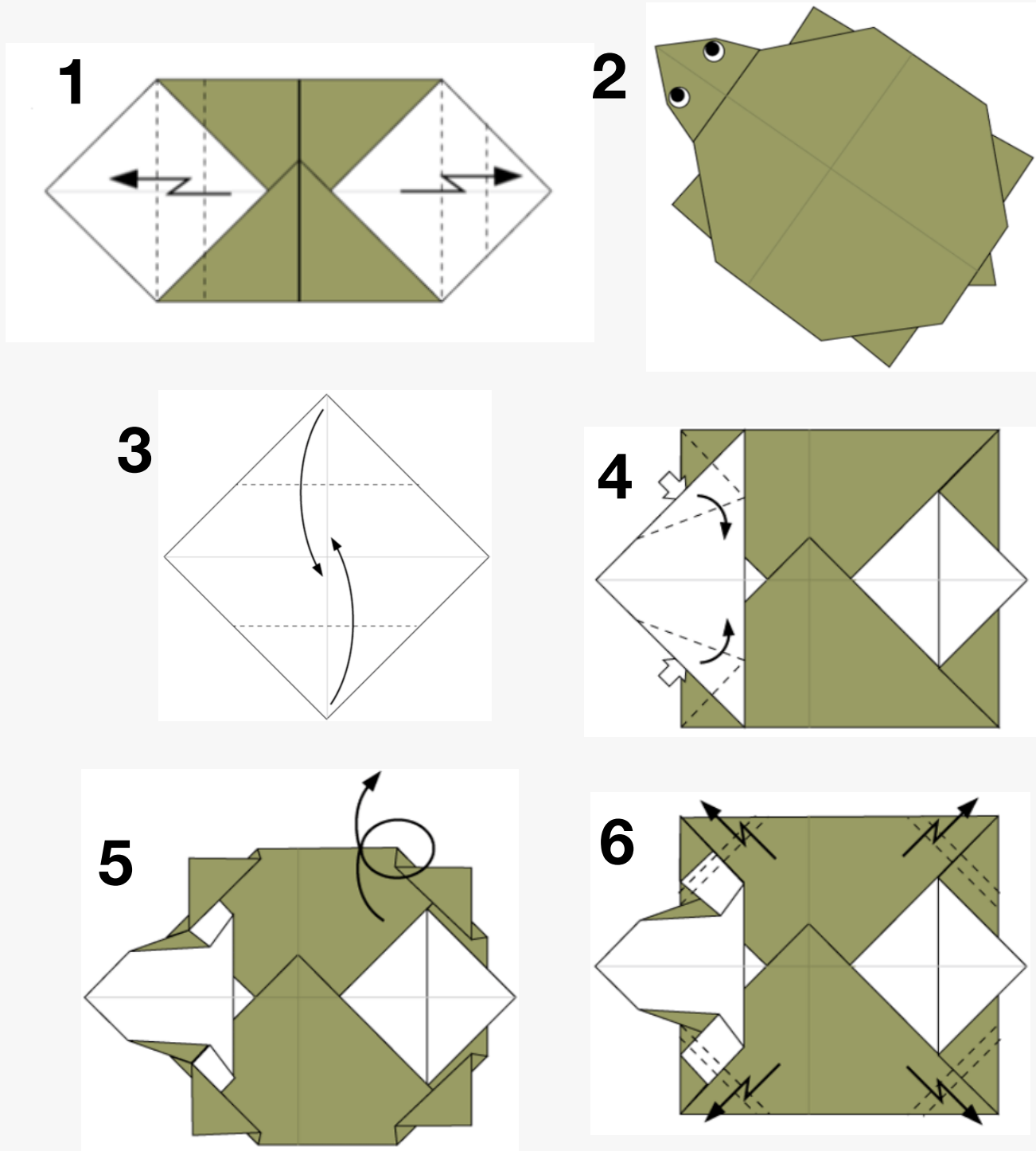
Task1: Pattern Prediction



Q: What pattern will this crease diagram form after being folded?

- A: snail
- C: teacup
- B: samurai hat
- D: pencil

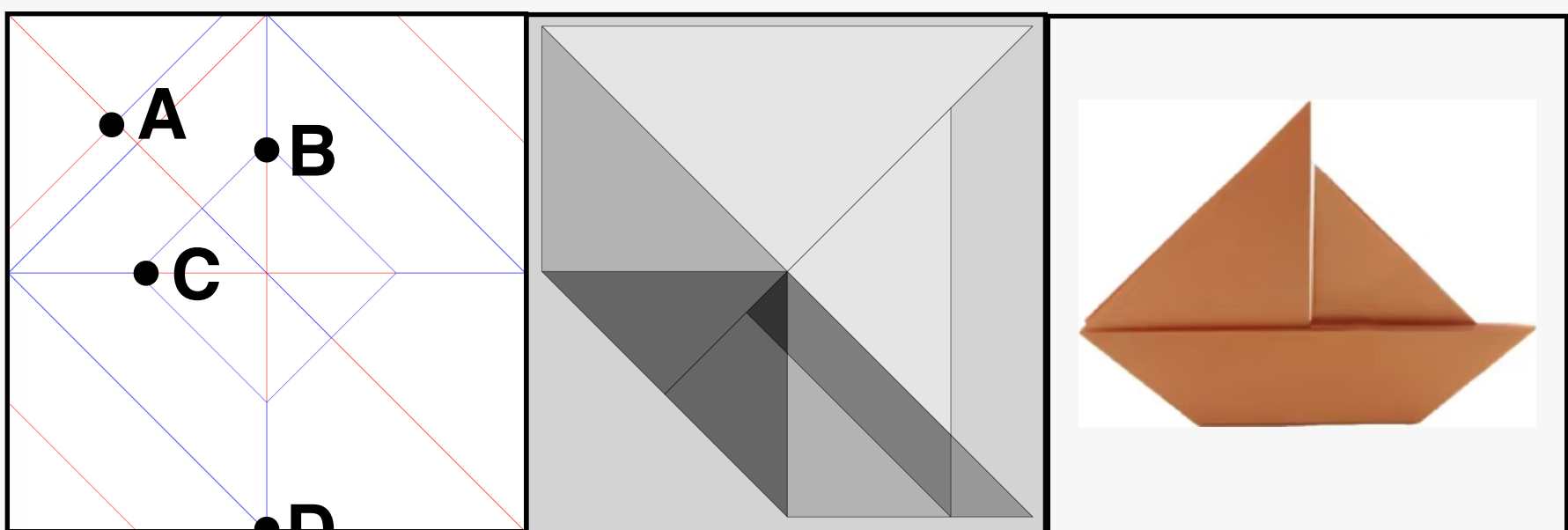
Task2: Multi-step Spatial Reasoning



Q: Which of the following origami sequences is correct?

- A: 3-4-1-6-5-2
- B: 3-1-6-4-5-2
- C: 3-1-4-6-5-2
- D: 3-1-4-5-6-2

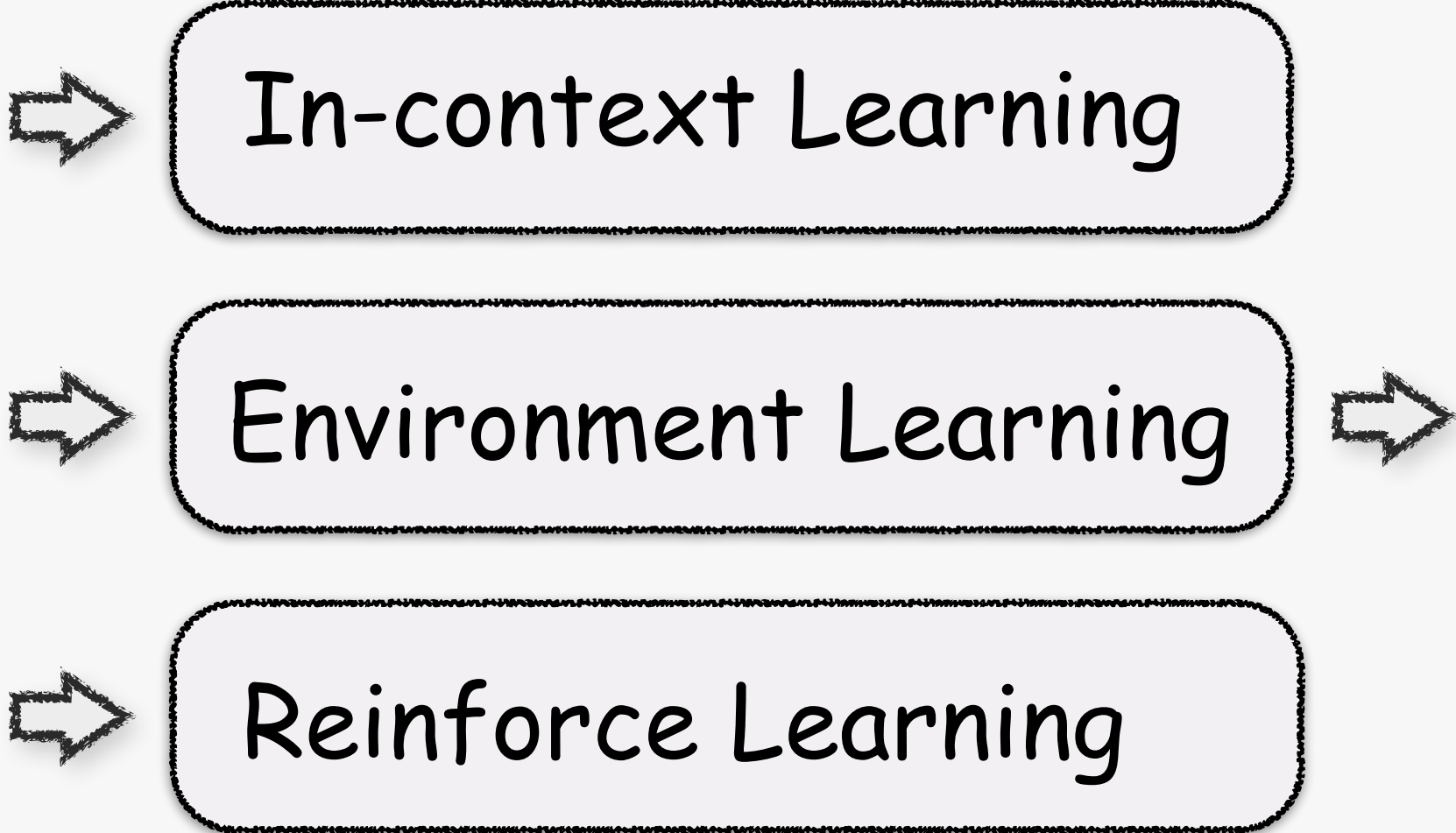
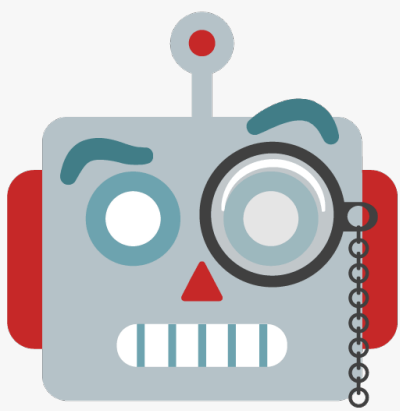
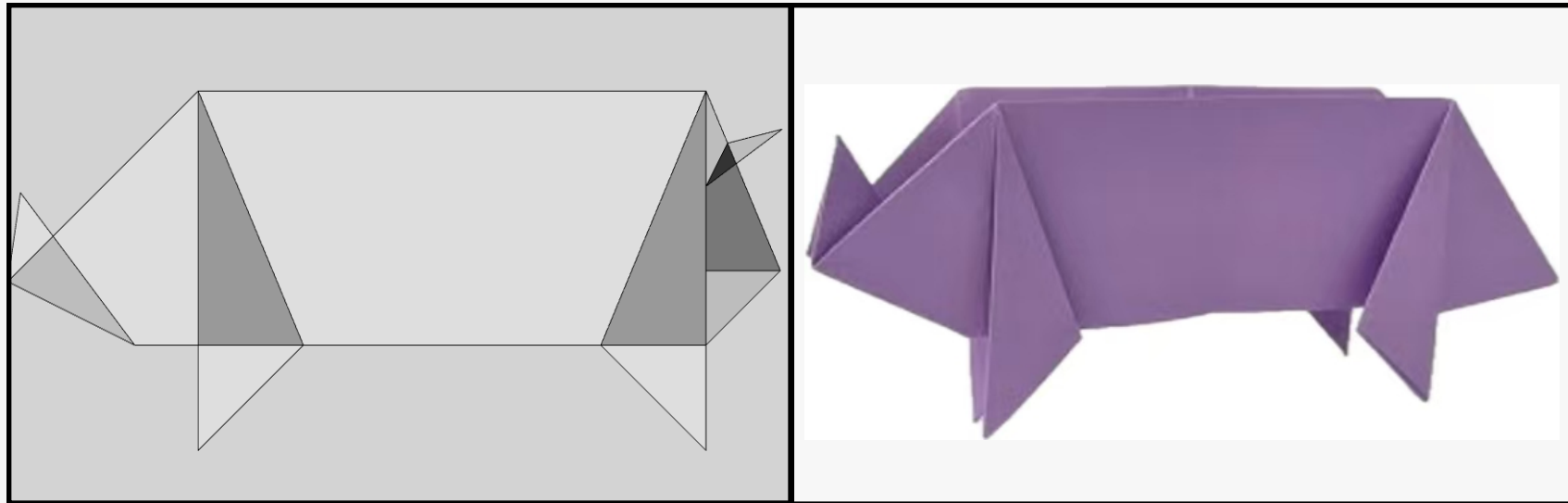
Task3: Spatial Relationship Prediction



Q: After folding, in the sailboat model, which two original points have the largest distance change?

- A: A pt and B pt
- B: B pt and D pt
- C: A pt and C pt
- D: A pt and D pt

Task4: End-to-End CP Code Generation



```
{vertices_coords: [0, 0], [1, 0], [1, 1], [0, 1]
edges_vertices: [0, 1], [1, 2], [2, 3], [3, 0], [0, 2]
edges_assignment: [B, B, B, B, M]
faces_vertices: [0, 1, 2], [0, 2, 3]}
```