

Pretraining a Neural Operator in Lower Dimensions

Anonymous authors

Paper under double-blind review

Abstract

There has recently been increasing attention towards developing foundational neural Partial Differential Equation (PDE) solvers and neural operators through large-scale pretraining. However, unlike vision and language models that make use of abundant and inexpensive (unlabeled) data for pretraining, these neural solvers usually rely on simulated PDE data, which can be costly to obtain, especially for high-dimensional PDEs. In this work, we aim to **Pretrain** neural PDE solvers on **Lower Dimensional** PDEs (PreLowD) where data collection is the least expensive. We evaluated the effectiveness of this pretraining strategy in similar PDEs in higher dimensions. We use the Factorized Fourier Neural Operator (FFNO) due to having the necessary flexibility to be applied to PDE data of arbitrary spatial dimensions and reuse trained parameters in lower dimensions. In addition, our work sheds light on the effect of the fine-tuning configuration to make the most of this pretraining strategy.

1 Introduction

1.1 Pretraining neural networks

Many of the recent breakthroughs in artificial intelligence and deep learning are the fruits of large-scale pretrained models in all kinds of applications, ranging from computer vision Chen et al. (2023), language processing Devlin et al. (2018), prediction of molecular properties Wang et al. (2022); Yu et al. (2021), and so on. Pretraining makes use of abundant data to learn useful and generalizable features and patterns that can be utilized in a downstream task. The effectiveness of using pretraining models is generally more significant when the downstream problem is complicated and/or the training data is scarce and expensive to collect Chakraborty et al. (2022). In such cases, a simple model is prone to underfitting and a complex one to overfitting. Using a pretrained model can spare us the learning of basic and fundamental features from scratch and reduce the mentioned risks in the downstream task.

There are several core strategies for pretraining neural networks in different applications depending on the task and data at hand. For example, a common strategy in many computer vision tasks is to use a pretrained model on the ImageNet dataset with a simple task such as classification He et al. (2019). Due to the large amount of data, this strategy has been beneficial in most computer vision tasks Ridnik et al. (2021). This case of pretraining is done in a supervised learning framework, which requires a large amount of data that was expensive to collect but now is available. However, this is not the situation in many cases and that is where self-supervised learning comes into play.

Self-supervised learning Liu et al. (2021) is similar to supervised learning with the difference that labels are automatically or trivially obtained from the data by itself without human input and are therefore inexpensive and fast to obtain. One of the most common and effective self-supervised pretraining strategies is masked autoencoding and prediction Devlin et al. (2018); He et al. (2022); Wei et al. (2022); Song et al. (2020), in which the model has to predict missing parts or certain features or targets from a masked, noisy, or modified version of the input. This strategy allows the model to extract and learn general patterns and features based on the context in which different parts of the data frequently appear. This framework is the key to the success behind many famous language models like BERT Devlin et al. (2018) and ChatGPT Wu et al. (2023). Image and video applications have also been shown to benefit from such strategies He et al. (2022); Tong et al. (2022).

In addition to masked autoencoding and prediction tasks, other strategies have been introduced and proven effective. In general, any modification that maintains the semantics and central features of the data can be used as labels for a model to learn and thus extract generalizable features Hu et al. (2019). These secondary tasks for self-supervised learning are also known as proxy tasks. Some examples of proxy tasks include sorting a shuffled input (scrambled words or image patches) Kim et al. (2019); Panda et al. (2021), regressing a similarity or relevance score between pairs of data samples generated by augmenting or modifying identical or different raw samples (known as contrastive learning) Hénaff et al. (2021); Rethmeier & Augenstein (2023); Jaiswal et al. (2020), or similarly aligning the representation of encoding the same object from different data modalities (auditory, visual, and textual) Lin et al. (2020); Wang et al. (2023). Due to the great novelty and success of all these strategies, neural PDE solvers and neural operators have also started to adapt the framework of pretrained models.

1.2 Pretraining neural PDE solvers and operators

With the increasing availability of large PDE datasets and the success of pretraining strategies in classical applications, many researchers have been adapting such techniques for neural PDE solvers and neural operators. A simple question that might arise is whether it is effective to use a pretrained model trained on one PDE to learn the same PDE with different coefficients or different PDEs. To that point, Subramanian et al. Subramanian et al. (2024) investigated the transfer of the Fourier neural operator (FNO) to different coefficients, different PDEs, and how the result may vary with model scale and dataset size. They also tried pretraining the model on a mixed dataset consisting of several PDEs, which is the main focus of many following works. Some examples of such works include Multiple Physics Pretraining (MPP) McCabe et al. (2023), Unified PDE Solvers (UPS) Shen et al. (2024), Universal Physics Transformer (UPT) Alkin et al. (2024), PDEFormer Ye et al. (2024), and Denoising Pretrained Operator Transformer (DPOT) Hao et al. (2024). These frameworks focus on designing a network architecture that is versatile enough to learn all PDEs in the training dataset, as well as other necessary techniques such as unifying the representation space and balancing the data feed between PDEs during training Hao et al. (2024). The common characteristic of all these works is that the pretraining task and the downstream task are the same, that is, predicting the next time-step of the system (time-dependent PDE) or output approximation (boundary value problem).

Although not as popular as in classical applications, pretraining via proxy tasks has also been explored for neural PDE solvers, including elaborations on how to transfer and tune the pretrained models. Yang et al. Yang et al. (2023) defined a context-based prompt answering architecture, which they showed to be a few-shot PDE learner. Zhang et al. Zhang et al. (2024) deciphered and integrated invariant features of physical systems in time and space in a contrastive learning framework and used them to fine-tune the first layer of a U-Net or FNO. Tripura et al. Lorsung et al. Lorsung & Farimani (2024) used PDE coefficients to develop a more flexible pretraining approach based on contrastive learning. Tripura & Chakraborty (2023) selectively fine-tuned certain components of their designed architecture and maintained the pretrained weights of the wavelet-based components. Zhou et al. Zhou & Farimani (2024) examined the capability of masked autoencoders as PDE learners, and later investigated a wide range of pretraining strategies for several neural operators and PDEs Zhou et al. (2024). Mialon et al. Mialon et al. (2023) proposed a contrastive learning strategy based on Lie symmetries in PDEs. Chen et al. Chen et al. (2024) applied classical pretraining strategies such as reconstructing blurred or masked inputs for neural PDE solvers. They used *unlabeled data* during pretraining, by which they meant the initial conditions in their datasets. Therefore, the pretraining stage actually relies on cheap data rather than expensive PDE datasets.

Up to this point, virtually all the cited works relied on a large pretraining dataset with a collection cost similar to that of the downstream task. Some focus on what one might rather call a multitask learning framework, while others looked into different ways to use the same kind of data with strategies to design proxy tasks or use and tune pretrained models. In contrast, we propose a novel pretraining approach to increase the accuracy and training efficiency of a neural operator for high-dimensional PDEs, that is, to use a pretrained model in lower dimensions (1D). Since the cost of data collection and model training in 1D can be significantly lower than in 2D, there is a strong incentive to make use of pretraining. However, this strategy may not be applicable to any arbitrary model architecture or PDE. In this work, we experiment with some fundamental PDEs that have a valid 1D and 2D version, and a neural operator that satisfies the

requirement to be utilized in this framework. Since the fundamental blocks of PDEs are 1D derivatives and operators, this work is potentially a step towards building foundational models for solving PDEs as well.

2 Background

2.1 Neural operators

Unlike the typical task of neural networks that is to approximate mappings between Euclidean spaces, neural operators approximate mappings between function spaces. An operator $\mathcal{G} : \mathcal{A} \rightarrow \mathcal{U}$ maps an input function $a \in \mathcal{A}$ to an output function $u \in \mathcal{U}$. In the application of solving PDEs, a can include PDE coefficients and initial and boundary conditions, and u is the solution of the PDE. In this work, we are considering time-dependent PDEs, where the input is the state of a physical system, and the output is the state at a later time. The operator then learns the mapping $u_t \rightarrow u_{t+\Delta t}$.

Although variables are defined and processed as functions, a discretized representation is eventually needed for numerical calculations. A higher resolution and a finer grid typically lead to more accurate results, but with the downside of higher computational cost and memory consumption, both for traditional numerical solvers and neural solvers. Typically, the cost increases exponentially with respect to the number of spatial axes. However, this is not the case for certain neural solvers that factorize the calculations across spatial axes. Some examples of such models are the Factorized Fourier Neural Operator (FFNO) Tran et al. (2021), Axial Vision Transformer (AViT) Ho et al. (2019); Bertasius et al. (2021) used in MPP McCabe et al. (2023), and FactFormer Li et al. (2024b;c). The central parameters and calculations of such models are defined per spatial axis, which makes the parameter count and computational cost the sum (rather than the product) of the single-axis amount, leading to a linear cost with respect to the number of spatial axes instead of an exponential cost. Moreover, it is possible to reuse the parameters of a pretrained 1D model when learning to predict a relevant system in higher dimensions. Our quest in this work is to investigate the potential of a model Pretrained in Lower Dimensions (PreLowDed) to be fine-tuned in higher dimensions. We choose to explore this strategy with the Factorized Fourier Neural Operator (FFNO) Tran et al. (2021) because of its efficiency due to the fast Fourier transform (FFT) and factorization. Following works can look into composition and factorization of other attention-based architectures like Galerkin Transformer Cao (2021) and OFormer Li et al. (2022), as well as using this strategy in a learned encoding space Hemmasian & Barati Farimani (2023); Hemmasian & Farimani (2024); Li et al. (2024a).

2.2 Factorized Fourier Neural Operator

The original Fourier Neural Operator (FNO) Li et al. (2020a) was introduced in a line of work based on an architecture analogous to typical neural networks. By replacing linear layers in a neural network with linear operators, Li et al. Li et al. (2020b) proposed an architecture template shown in figure 1a to construct a neural operator through iterative linear and nonlinear transformations of the input:

$$u = \mathcal{G}(a) = \left(\mathcal{Q} \circ \mathcal{L}^{(L)} \circ \dots \circ \mathcal{L}^{(1)} \circ \mathcal{P} \right) (a), \quad (1)$$

where \circ is function composition, L is the number of layers, \mathcal{P} is the input projector from the physical space to the latent space, $\mathcal{L}^{(l)}$ is the l th non-linear operator layer, and \mathcal{Q} is the output projector from the latent space back to the physical space. A nonlinear operator layer of FNO executes the following transformations on the latent representation:

$$\mathcal{K}^{(l)}(z^{(l-1)}) = \text{IFFT}\left(R^{(l)} \cdot \text{FFT}(z^{(l-1)})\right) \quad (2)$$

$$z^{(l)} = \mathcal{L}^{(l)}(z^{(l-1)}) = \sigma\left(W^{(l)}z^{(l-1)} + b^{(l)} + \mathcal{K}^{(l)}(z^{(l-1)})\right) \quad (3)$$

where $\mathcal{K}^{(l)}$ is a kernel integral operator that executes a convolution integral with a matrix multiplication in the Fourier space, $R_d^{(l)}$ is the Fourier weight matrix, $\sigma : \mathbb{R} \rightarrow \mathbb{R}$ is a point-wise nonlinear activation function, and $W^{(l)}z^{(l-1)} + b^{(l)}$ is an affine point-wise map in physical space. You can see a simple illustration of the FNO layer on the left in figure 1b, and a 2D kernel integral operator block in figure 1c. Assuming the same

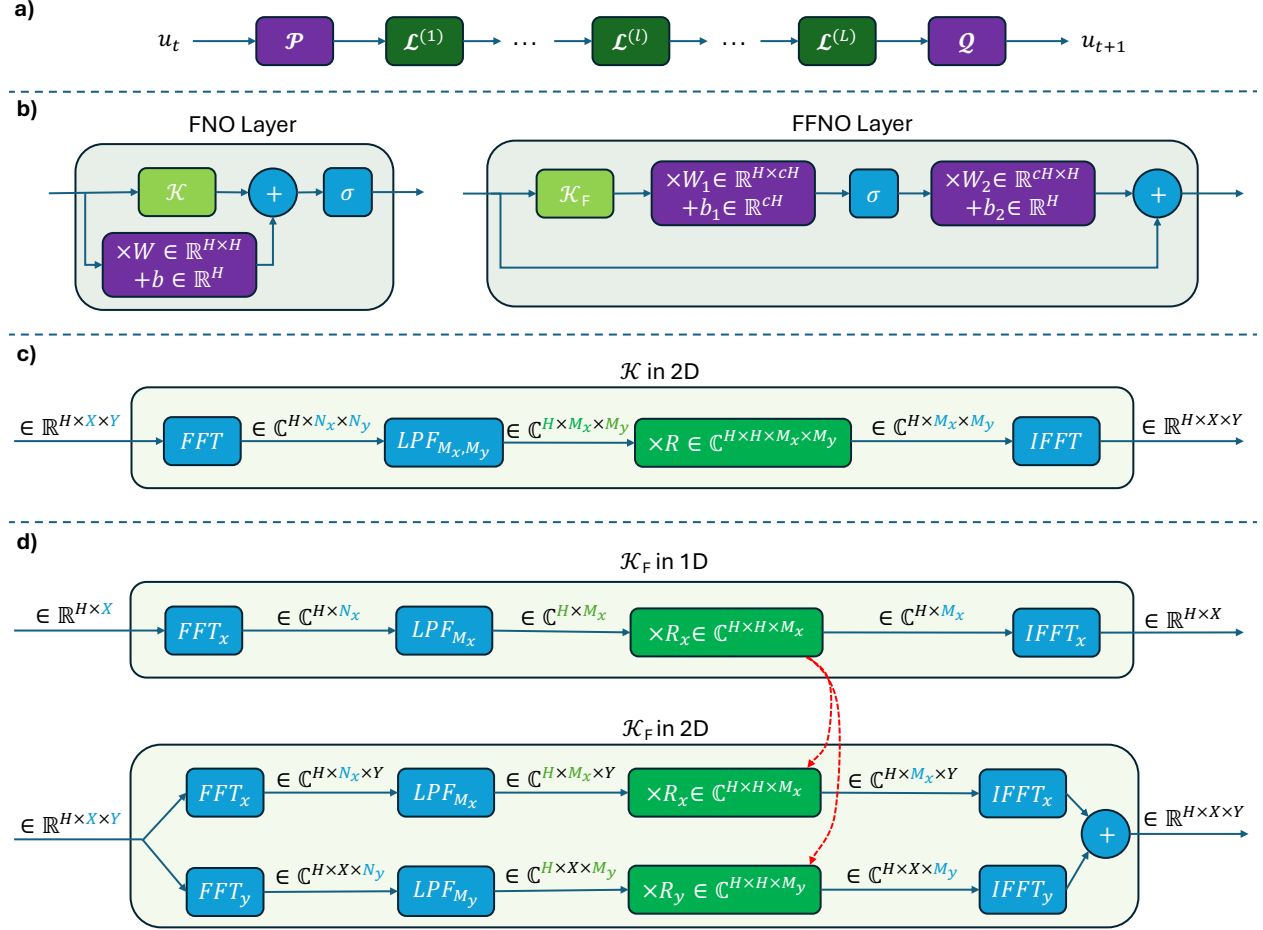


Figure 1: a) General schematic of a neural operator. b) The nonlinear operator layer in FNO and FFNO. c) The kernel integral operator in FNO. *LPF* stands for a low pass filter that keeps the first few Fourier modes in each axis and discards the higher frequency modes. d) 1D and 2D factorized kernel integral operator in FFNO. The red arrows show the possible transfer of pretrained parameters from a 1D model to a 2D model if $M_x = M_y$.

number of Fourier modes in each axis ($M_x = M_y = M$), each layer has a distinct or shared complex weight matrix $R^{(l)}$ containing $H^2 M^D$ complex parameters, where H represents the hidden or latent dimension (also known as width) and D is the number of spatial axes.

Later, Tran et al. Tran et al. (2021) proposed a factorized version of FNO (FFNO) with a factorized kernel integral operator \mathcal{K}_F and a modified layer $\mathcal{L}^{(l)}$:

$$\mathcal{K}_F^{(l)}(z^{(l-1)}) = \sum_d \left[\text{IFFT}_d \left(R_d^{(l)} \cdot \text{FFT}_d(z^{(l-1)}) \right) \right] \quad (4)$$

$$z^{(l)} = \mathcal{L}^{(l)}(z^{(l-1)}) = z^{(l-1)} + W_2^{(l)} \sigma \left(W_1^{(l)} \mathcal{K}_F^{(l)}(z^{(l-1)}) + b_1^{(l)} \right) + b_2^{(l)} \quad (5)$$

Here, \mathcal{K}_F is a factorized kernel integral operator, $R_d^{(l)}$ is the Fourier weight matrix of axis d , and σ, W, b represent the activation, weights, and biases of the feedforward layers respectively. A simple visualization of the FFNO layer and its factorized kernel integral operator are provided in figure 1b and 1d respectively. FFNO fully preserves the residual connection throughout the layers to keep the original input and its information as much as possible, and applies the nonlinearity to the output of the kernel integral instead. It also uses a two-layer feedforward layer instead of the single-layer one in FNO, which is inspired by the transformer architecture Vaswani et al. (2017). The central feature of FFNO is the factorized kernel integral operator whose cost and parameters count in each dimension is $O(H^2 M)$, summing up to $O(H^2 MD)$.

Not only does the factorized architecture save a lot of computational cost and memory usage when storing, training, and testing the model, but it also allows weights to be of the same shape across different axes if the number of modes is the same. This opens up the possibility of transferring weights across different problems with an arbitrary number of axes. In this work, we evaluate the effectiveness of this strategy on the advection and diffusion equations, two simple but fundamental PDEs.

3 Methodology

As explained previously and illustrated in figure 1d, a 1D FFNO and a 2D FFNO can share all their corresponding parameters if the number of preserved Fourier modes is the same in x and y . The projection layers and the feedforward layers are point-wise transformations in the physical space, and all Fourier weights are defined for a single axis. After transferring the pretrained parameters, we explore different configurations to freeze or fine-tune them for the downstream task. In classical applications like computer vision, the typical strategy is to freeze the weights of the initial layers (also known as the stem) and only tune the parameters of the final layer(s). This is justified due to the hierarchical nature of the architecture and the learned features. Moreover, tuning the model is cheaper since the backpropagation is not executed all the way back to the input, and the sheer number of trainable parameters is also decreased by freezing the stem of the model. In addition, the scarcity of training data in the downstream task introduces the risk of overfitting, which can be mitigated by this strategy due to the low number of trainable parameters. Keeping this in mind, we have to decide how to choose the best way to perform the fine-tuning considering the architecture of neural operators and PDE data.

The first difference that we pay attention to is the absence of the hierarchical architecture and feature extraction in models like FNO and FFNO. Unlike convolutional neural networks that have a shrinking architecture towards the output, these neural operators maintain the same resolution and stay in roughly the same latent space throughout their hidden layers. Therefore, the classic fine-tuning strategies of classic applications may not be the best choice here. However, these models consist of several types of components, each of which may learn certain properties and features of the system. For example, the parameters of FFNO belong to either projectors, kernel integral operator layers, or feedforward layers. We can choose to fine-tune only a subset of the model’s components and see how the tuned model performs in the downstream task. This can also pave the path towards interpretability of such models by breaking down the information learned by each component.

In addition to choosing the tunable subset of the model based on component type, we also consider fine-tuning based on the chronological order of the layers. This includes not only the classical approach of fine-tuning

the last layer(s), but also fine-tuning the first layer(s) or a combination of both. If we want to try all the possible configurations, the number of experiments exponentially increases, since we may choose to tune or not tune each component of each layer. Therefore, we narrow our options down to eight configurations as shown in table 1. We will represent the model without pretraining as C0. The projector layers \mathcal{P} , \mathcal{Q} are left to be tuned in all cases.

Table 1: The trainable components of the fine-tuning configurations.

| parameters | C1 | C2 | C3 | C4 | C5 | C6 | C7 | C8 |
|--------------------------------|----|----|----|----|----|----|----|----|
| $R^{(0)}$ | ✓ | ✓ | × | × | ✓ | ✓ | ✓ | × |
| $W^{(0)}, b^{(0)}$ | ✓ | × | ✓ | × | × | ✓ | × | × |
| $R^{(l)} (0 < l < L)$ | ✓ | ✓ | × | × | × | × | × | × |
| $W^{(l)}, b^{(l)} (0 < l < L)$ | ✓ | × | ✓ | × | × | × | × | × |
| $R^{(L)}$ | ✓ | ✓ | × | × | × | × | × | ✓ |
| $W^{(L)}, b^{(L)}$ | ✓ | × | ✓ | ✓ | × | × | ✓ | ✓ |

We will evaluate the performance of the models by comparing the next-step prediction error and the average error over a 5-step autoregressive rollout. We also conduct experiments with different number of training samples in the downstream task. As we shall see, the advantage of pretraining depends on the availability of training data in the downstream task.

4 Experiments

4.1 Datasets and objectives

The general format and domains of the PDEs in this work are shown in equation 6, where N is a linear or nonlinear function, \mathbf{c} is the vector of the PDE coefficients, u is the quantity of interest, and t, \mathbf{x} are the time and space variables, respectively. Each sample of a dataset consists of the evolution of the system in the specified time domain sampled every $\Delta t = 0.05$, resulting in 21 snapshots and 20 input-output pairs on which the model will be trained. The spatial resolutions for the 1D and 2D datasets are set to 1024 and 64^2 , respectively. Different samples of each dataset are governed by the same equation and coefficients, and differ only in the initial condition defined by equation 7 where $\mathbf{A}_i, n_i, \phi_i$ are random variables drawn from uniform distributions, similar to the multi-dimensional datasets in PDEBench Takamoto et al. (2022). We assume periodic boundary conditions in all cases.

$$u_t = N(\mathbf{c}, u, u_x, u_{xx}, u_{xy}, \dots) \quad (6)$$

$$u = u(\mathbf{x}, t) \in \mathbb{R}, \quad t \in [0, 1], \quad \mathbf{x} \in (0, 1)^D, \quad D \in \{1, 2\}$$

$$u_0(\mathbf{x}) = u(\mathbf{x}, t = 0) = \sum_{i=1}^N \mathbf{A}_i \sin(2\pi n_i \mathbf{x} + \phi_i) \quad (7)$$

For each dimensionality and each value of \mathbf{c} , 10000 samples were generated, 2000 of which are held for validation. We use the entire 1D training dataset in the pretraining stage, but use a limited subset of the 2D training data for the downstream task. Since the characteristics of a typical scenario for using pretraining models are the high collection cost and scarcity of data, we set up the experiments to resemble such scenarios.

For the downstream task, we compare a model trained from random initialization and 8 pretrained models with fine-tuning configurations shown in table 1. The objective of both training and validation is the relative L_2 norm (also known as nRMSE Takamoto et al. (2022)) of the prediction error shown in equation 8 where \hat{y}, y are the model output and target value for the quantity of interest, respectively. In our application, y is the state of the system at the next time-step. We train the model on the next-step prediction loss and evaluate the model using the same metric on the validation dataset, as well as the average loss over a 5-step autoregressive rollout similar to what was done in PDEBench Takamoto et al. (2022). Finally, we run each experiment with 3 different random seeds and report the average result to take into account the randomness of the network initialization, as well as the randomly selected subset of the 2D training dataset. Now, we

will look at the specifics of each equation, the result for each dataset, and discuss the effect of the fine-tuning strategy, the number of training samples, and the PDE coefficient based on the observed results. We will continue the discussion here using concise plots. Please refer to A for detailed numerical tables on all the curated results.

$$rL_2(\hat{y}, y) = \frac{\|\hat{y} - y\|_2}{\|y\|_2} \quad (8)$$

Each training stage consists of 5000 iterations of the AdamW optimizer with an initial learning rate of 0.001. The learning rate is multiplied by 0.2 when the loss reaches a plateau and does not improve for more than 100 iterations. Our choice of architecture for FFNO has 4 hidden layers with a latent dimension of 128 and 16 Fourier modes in each axis.

4.2 Diffusion equation

We generated six different diffusion datasets by solving equation 9 in 1D and 2D for each coefficient. An implicit Euler scheme with $\Delta t = 0.001$ was utilized.

$$u_t = \nu \nabla^2 u, \quad \nu \in \{0.001, 0.002, 0.004\} \quad (9)$$

The results for the diffusion datasets are shown in figure 2. The x-axis represents the number of downstream training samples, and the y-axis represents the average loss on the 2000 validation samples. We exclude the instances trained with only 1 or 2 training samples due to their unacceptable amount of error. It appears that the fine-tuning configurations C1, C2, and C8 perform as well or better than the randomly initialized model C0, and the remaining configurations fail to achieve the same error as C0. Focusing on C1 (all parameters trainable) and C0, the first trivial indicator of success is that C1 outperforms C0 and reduces the error up to 80% in the low-data regime. The second interesting observation is the different trend of the error with respect to the number of training parameters. The error of C0 starts from a very high value in the left side with very few samples, and improves significantly with the increase of the training dataset size. However, the performance of C1 even with very few samples on the left is already comparable to the performance on the right end of the plot. An interesting observation is that C1 trained on 8 samples outperforms C0 trained on 1024 samples for $\nu = 0.004$. There we can also see more clearly that the advantage of pretraining is amplified over autoregressive rollout. For exact values, refer to A.

The second trend that we discuss is how the advantage varies for different coefficient values of the PDE. In the diffusion equation, the larger coefficient means a more rapidly changing system. It can be seen in figure 2 that for a larger dataset size, the differences between C1 and C0 are relatively small for $\nu = 0.001$. However, the gap becomes more significant as we increase the diffusion coefficient. For the 5-step rollout for $\nu = 0.004$, C1 still achieves a 40-50% error reduction compared to C0. Statistically speaking, the distribution of the system state remains relatively more familiar over time if the model changes less rapidly. Therefore, more unfamiliar samples and a different state distribution are presented to the model during validation if the system has a rapid rate of change, further increasing the risk of overfitting and poor performance on the unseen validation data. However, the pretrained models have already seen a large amount of data, hence mitigating this risk to some extent.

Focusing on the fine-tuning configurations, C1, C2, and C8 are the models that perform best. The explanation is trivial for C1, since it is totally free to be tuned on the downstream data. However, it is interesting that C8 with only the last layer left trainable outperforms C2 (all Fourier layers trainable) despite having fewer trainable parameters. Each Fourier and feedforward layer have about 524K and 60K parameters, respectively. This means that C8 with less than 600K parameters performs as well as or better than C2 with more than 2 million trainable parameters. This can be indicative of a hierarchical order of the learning mechanism of the model for the diffusion equation. In the extreme low-data regime (less than 10), tuning configurations with less trainable parameters appear to have the most advantage according to the tables in A. This makes sense since having fewer trainable parameters reduces their risk of overfitting. However, they fall behind when more training samples are available.

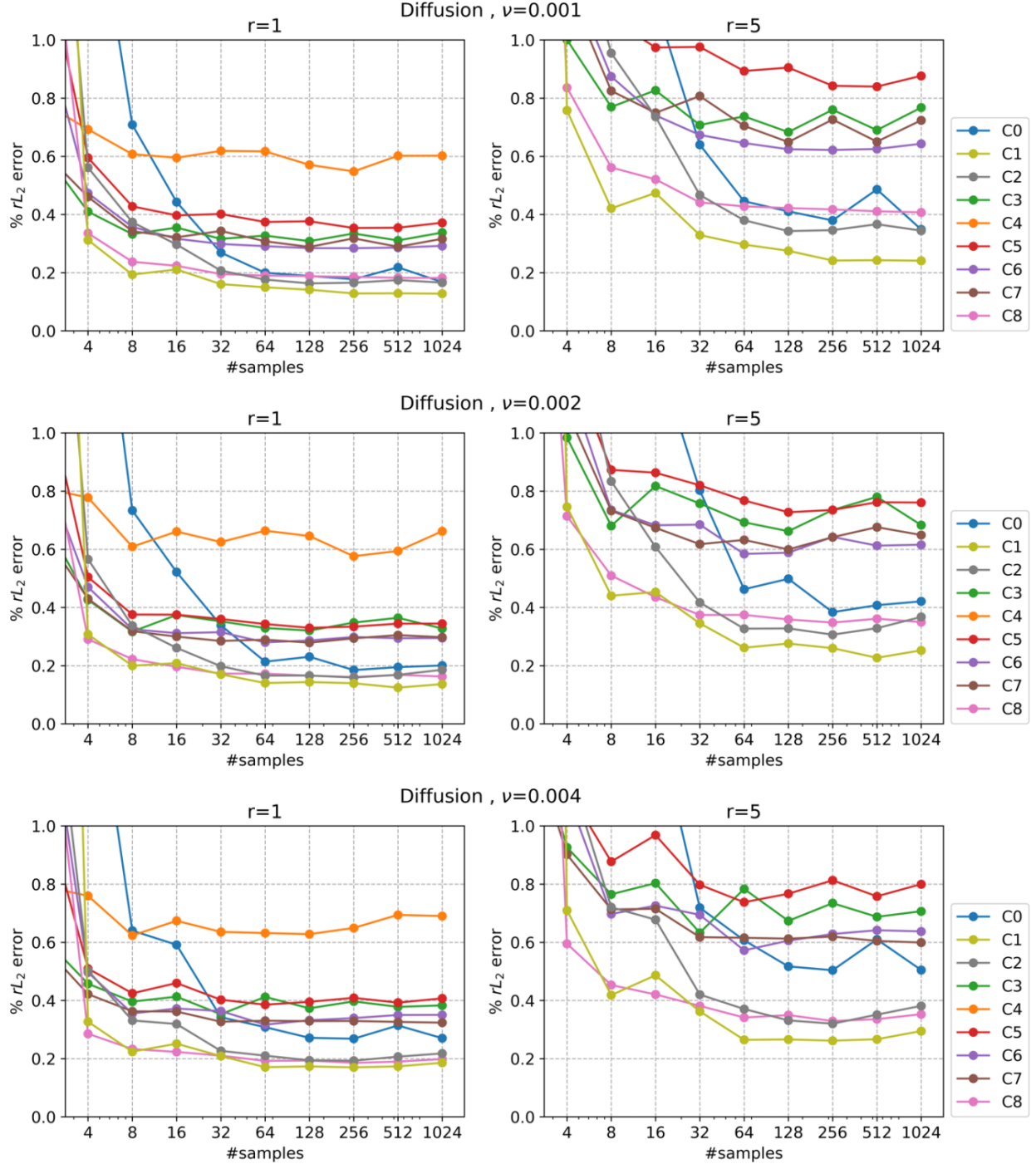


Figure 2: Average rL_2 loss in percentage for the diffusion equation. C0 is the randomly initialized model and the rest are PreLowDed models fine-tuned according to table 1. The left column shows the next-step error (rollout=1) and the right column shows the average error over the next five autoregressive steps (rollout=5).

4.3 Advection equation

Similarly to the diffusion dataset, six advection datasets were provided for our experiments. The 1D datasets are provided by PDEBench Takamoto et al. (2022), and we generated the 2D datasets using the exact solution function of $u(x, y, t) = u_0(x - \beta t, y - \beta t)$.

$$u_t = -\beta \nabla u, \quad \beta \in \{0.1, 0.4, 1.0\} \quad (10)$$

For the advection equations, the strategy does not seem to be as successful as the diffusion equations. Based on the results provided in figure 3, the difference between the best pretrained models and C0 is significant only to the far left of the plot with very few samples. The two fine-tuning configurations that seem to be on par with C0 are C1 and C2, which are the ones with the most number of trainable parameters. Unlike the case for diffusion equations, C8 performs poorly, falling into the second last model for $\beta = 1.0$, which can indicate a fundamental difference in how the model extracts features and learns to solve the advection equation compared to the diffusion equation. With an increase of β , the rate of change increases, and the prediction task becomes more difficult. Unlike the diffusion equations where pretraining showed even more benefit over autoregressive rollout, there does not seem to be any significant difference for the advection equations.

5 Conclusion

This work proposes a novel strategy to reduce the cost of data collection, training, and error of a neural operator in multidimensional PDEs. For a neural operator with a factorized architecture like FFNO, we can pretrain a model in lower dimensions (PreLowD) and transfer the weights to a multidimensional model. We showed that this strategy is successful for the 2D diffusion equation, but not for the advection equation. When successful, the PreLowDed model outperformed the randomly initialized model by up to 70% in low-data regimes and a slow-changing system. When the system has a faster rate of change or the model is used autoregressively, the gain of the PreLowDed model is even more significant, achieving an error reduction of 50% over a 5-step rollout with 1024 training samples.

We explored several fine-tuning strategies to find the best way to freeze or tune the transferred weights from a PreLowDed model. It seems that with sufficient training, more trainable parameters will result in a lower error. However, tuning a smaller subset of the parameters may achieve a lower error when very few training samples are available. For the advection equation, the only important factor seemed to be the sheer number of tunable parameters. However, tuning the final full layer for the diffusion datasets was among the best choices, indicating a possibly hierarchical feature extraction of the model.

In future work, this pretraining strategy may be utilized with other neural operators and PDE solvers that have the necessary properties as well. However, it may not be straightforward to find or define a version of the system of interest in a different dimensionality. Moreover, the selective fine-tuning strategy can be applied to any neural operator and can provide insight into the generalizability and interpretability of such models. For example, tuning different parts of the model while varying a certain coefficient or term for the PDE of the downstream task can help discover the correspondence of the neural operator’s components and different modalities and terms of the PDE. Finally, an important potential venue for research is the study of different possible compositions of low-dimensional models and factorization of high-dimensional models. The ultimate goal of this direction is to improve the prediction accuracy and efficiency in more complex or 3D systems, and this work was just a humble starting step towards that end.

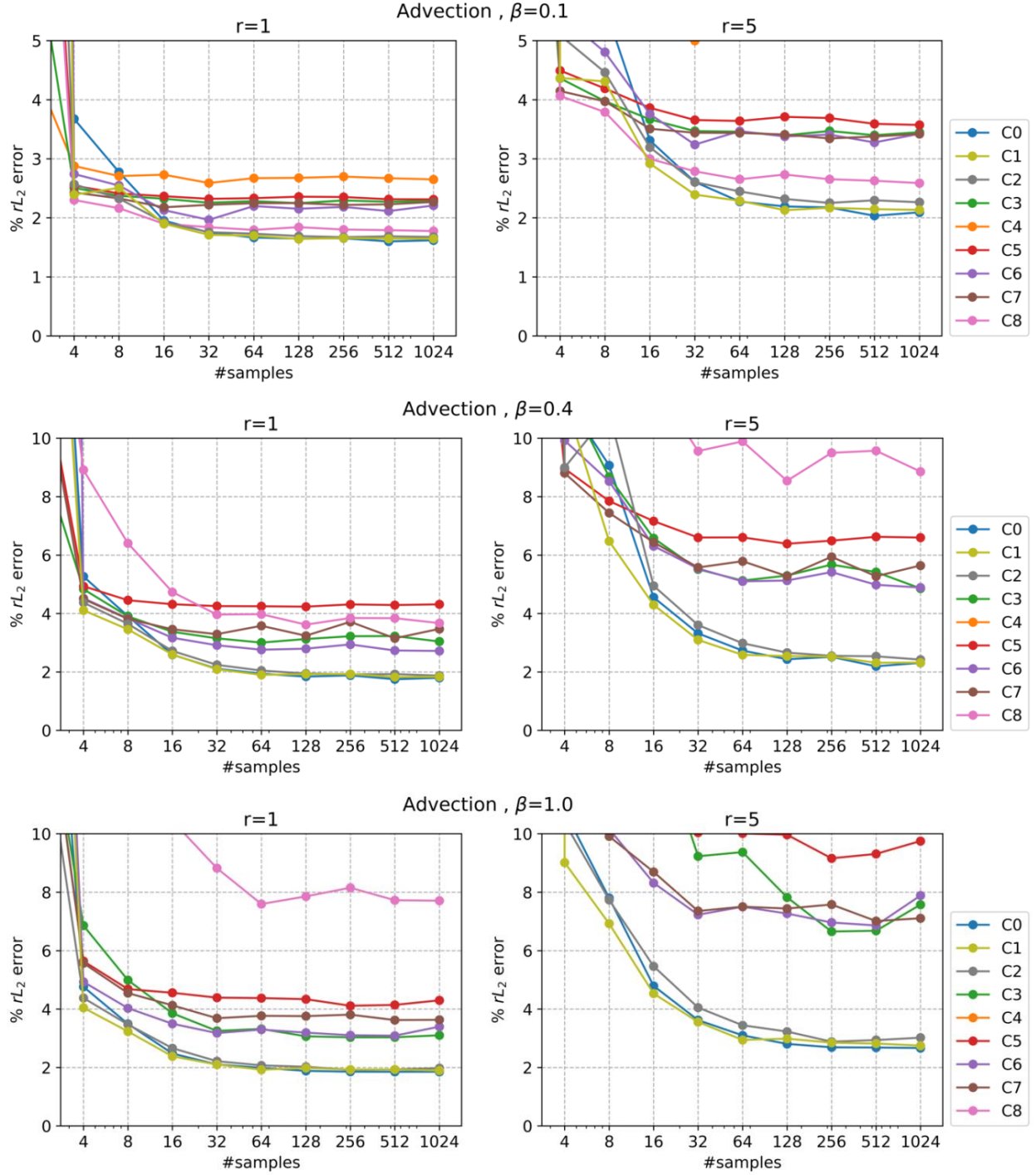


Figure 3: Average rL_2 loss in percentage for the advection equation. C0 is the randomly initialized model and the rest are PreLowDed models fine-tuned according to table 1. The left column shows the next-step error (rollout=1) and the right column shows the average error over the next five autoregressive steps (rollout=5).

References

- Benedikt Alkin, Andreas Fürst, Simon Schmid, Lukas Gruber, Markus Holzleitner, and Johannes Brandstetter. Universal physics transformers. *arXiv preprint arXiv:2402.12365*, 2024.
- Gedas Bertasius, Heng Wang, and Lorenzo Torresani. Is space-time attention all you need for video understanding? In *ICML*, volume 2, pp. 4, 2021.
- Shuhao Cao. Choose a transformer: Fourier or galerkin. *Advances in neural information processing systems*, 34:24924–24940, 2021.
- Shuvam Chakraborty, Burak Uzcent, Kumar Ayush, Kumar Tanmay, Evan Sheehan, and Stefano Ermon. Efficient conditional pre-training for transfer learning. In *Proceedings of the IEEE/CVF Conference on Computer Vision and Pattern Recognition*, pp. 4241–4250, 2022.
- Fei-Long Chen, Du-Zhen Zhang, Ming-Lun Han, Xiu-Yi Chen, Jing Shi, Shuang Xu, and Bo Xu. Vlp: A survey on vision-language pre-training. *Machine Intelligence Research*, 20(1):38–56, 2023.
- Wuyang Chen, Jialin Song, Pu Ren, Shashank Subramanian, Dmitriy Morozov, and Michael W Mahoney. Data-efficient operator learning via unsupervised pretraining and in-context learning. *arXiv preprint arXiv:2402.15734*, 2024.
- Jacob Devlin, Ming-Wei Chang, Kenton Lee, and Kristina Toutanova. Bert: Pre-training of deep bidirectional transformers for language understanding. *arXiv preprint arXiv:1810.04805*, 2018.
- Zhongkai Hao, Chang Su, Songming Liu, Julius Berner, Chengyang Ying, Hang Su, Anima Anandkumar, Jian Song, and Jun Zhu. Dpot: Auto-regressive denoising operator transformer for large-scale pde pre-training. *arXiv preprint arXiv:2403.03542*, 2024.
- Kaiming He, Ross Girshick, and Piotr Dollár. Rethinking imagenet pre-training. In *Proceedings of the IEEE/CVF international conference on computer vision*, pp. 4918–4927, 2019.
- Kaiming He, Xinlei Chen, Saining Xie, Yanghao Li, Piotr Dollár, and Ross Girshick. Masked autoencoders are scalable vision learners. In *Proceedings of the IEEE/CVF conference on computer vision and pattern recognition*, pp. 16000–16009, 2022.
- AmirPouya Hemmasian and Amir Barati Farimani. Reduced-order modeling of fluid flows with transformers. *Physics of Fluids*, 35(5), 2023.
- AmirPouya Hemmasian and Amir Barati Farimani. Multi-scale time-stepping of partial differential equations with transformers. *Computer Methods in Applied Mechanics and Engineering*, 426:116983, 2024.
- Olivier J Hénaff, Skanda Koppula, Jean-Baptiste Alayrac, Aaron Van den Oord, Oriol Vinyals, and Joao Carreira. Efficient visual pretraining with contrastive detection. In *Proceedings of the IEEE/CVF International Conference on Computer Vision*, pp. 10086–10096, 2021.
- Jonathan Ho, Nal Kalchbrenner, Dirk Weissenborn, and Tim Salimans. Axial attention in multidimensional transformers. *arXiv preprint arXiv:1912.12180*, 2019.
- Weihua Hu, Bowen Liu, Joseph Gomes, Marinka Zitnik, Percy Liang, Vijay Pande, and Jure Leskovec. Strategies for pre-training graph neural networks. *arXiv preprint arXiv:1905.12265*, 2019.
- Ashish Jaiswal, Ashwin Ramesh Babu, Mohammad Zaki Zadeh, Debapriya Banerjee, and Fillia Makedon. A survey on contrastive self-supervised learning. *Technologies*, 9(1):2, 2020.
- Dahun Kim, Donghyeon Cho, and In So Kweon. Self-supervised video representation learning with space-time cubic puzzles. In *Proceedings of the AAAI conference on artificial intelligence*, volume 33, pp. 8545–8552, 2019.
- Zijie Li, Kazem Meidani, and Amir Barati Farimani. Transformer for partial differential equations’ operator learning. *arXiv preprint arXiv:2205.13671*, 2022.

- Zijie Li, Saurabh Patil, Francis Ogoke, Dule Shu, Wilson Zhen, Michael Schneier, John R Buchanan Jr, and Amir Barati Farimani. Latent neural pde solver: a reduced-order modelling framework for partial differential equations. *arXiv preprint arXiv:2402.17853*, 2024a.
- Zijie Li, Dule Shu, and Amir Barati Farimani. Scalable transformer for pde surrogate modeling. *Advances in Neural Information Processing Systems*, 36, 2024b.
- Zijie Li, Anthony Zhou, Saurabh Patil, and Amir Barati Farimani. Cafa: Global weather forecasting with factorized attention on sphere. *arXiv preprint arXiv:2405.07395*, 2024c.
- Zongyi Li, Nikola Kovachki, Kamyar Azizzadenesheli, Burigede Liu, Kaushik Bhattacharya, Andrew Stuart, and Anima Anandkumar. Fourier neural operator for parametric partial differential equations. *arXiv preprint arXiv:2010.08895*, 2020a.
- Zongyi Li, Nikola Kovachki, Kamyar Azizzadenesheli, Burigede Liu, Kaushik Bhattacharya, Andrew Stuart, and Anima Anandkumar. Neural operator: Graph kernel network for partial differential equations. *arXiv preprint arXiv:2003.03485*, 2020b.
- Junyang Lin, An Yang, Yichang Zhang, Jie Liu, Jingren Zhou, and Hongxia Yang. Interbert: Vision-and-language interaction for multi-modal pretraining. *arXiv preprint arXiv:2003.13198*, 2020.
- Xiao Liu, Fanjin Zhang, Zhenyu Hou, Li Mian, Zhaoyu Wang, Jing Zhang, and Jie Tang. Self-supervised learning: Generative or contrastive. *IEEE transactions on knowledge and data engineering*, 35(1):857–876, 2021.
- Cooper Lorsung and Amir Barati Farimani. Picl: Physics informed contrastive learning for partial differential equations. *arXiv preprint arXiv:2401.16327*, 2024.
- Michael McCabe, Bruno Régalo-Saint Blancard, Liam Holden Parker, Ruben Ohana, Miles Cranmer, Alberto Bietti, Michael Eickenberg, Siavash Golkar, Geraud Krawezik, Francois Lanusse, et al. Multiple physics pretraining for physical surrogate models. *arXiv preprint arXiv:2310.02994*, 2023.
- Grégoire Mialon, Quentin Garrido, Hannah Lawrence, Danyal Rehman, Yann LeCun, and Bobak Kiani. Self-supervised learning with lie symmetries for partial differential equations. *Advances in Neural Information Processing Systems*, 36:28973–29004, 2023.
- Subhadarshi Panda, Anjali Agrawal, Jeewon Ha, and Benjamin Bloch. Shuffled-token detection for refining pre-trained roberta. In *Proceedings of the 2021 Conference of the North American Chapter of the Association for Computational Linguistics: Student Research Workshop*, pp. 88–93, 2021.
- Nils Rethmeier and Isabelle Augenstein. A primer on contrastive pretraining in language processing: Methods, lessons learned, and perspectives. *ACM Computing Surveys*, 55(10):1–17, 2023.
- Tal Ridnik, Emanuel Ben-Baruch, Asaf Noy, and Lihi Zelnik-Manor. Imagenet-21k pretraining for the masses. *arXiv preprint arXiv:2104.10972*, 2021.
- Junhong Shen, Tanya Marwah, and Ameet Talwalkar. Ups: Towards foundation models for pde solving via cross-modal adaptation. *arXiv preprint arXiv:2403.07187*, 2024.
- Kaitao Song, Xu Tan, Tao Qin, Jianfeng Lu, and Tie-Yan Liu. Mpnet: Masked and permuted pre-training for language understanding. *Advances in neural information processing systems*, 33:16857–16867, 2020.
- Shashank Subramanian, Peter Harrington, Kurt Keutzer, Wahid Bhimji, Dmitriy Morozov, Michael W Mahoney, and Amir Gholami. Towards foundation models for scientific machine learning: Characterizing scaling and transfer behavior. *Advances in Neural Information Processing Systems*, 36, 2024.
- Makoto Takamoto, Timothy Praditia, Raphael Leiteritz, Daniel MacKinlay, Francesco Alesiani, Dirk Pflüger, and Mathias Niepert. Pdebench: An extensive benchmark for scientific machine learning. *Advances in Neural Information Processing Systems*, 35:1596–1611, 2022.

- Zhan Tong, Yibing Song, Jue Wang, and Limin Wang. Videomae: Masked autoencoders are data-efficient learners for self-supervised video pre-training. *Advances in neural information processing systems*, 35: 10078–10093, 2022.
- Alasdair Tran, Alexander Mathews, Lexing Xie, and Cheng Soon Ong. Factorized fourier neural operators. *arXiv preprint arXiv:2111.13802*, 2021.
- Tapas Tripura and Souvik Chakraborty. A foundational neural operator that continuously learns without forgetting. *arXiv preprint arXiv:2310.18885*, 2023.
- Ashish Vaswani, Noam Shazeer, Niki Parmar, Jakob Uszkoreit, Llion Jones, Aidan N Gomez, Łukasz Kaiser, and Illia Polosukhin. Attention is all you need. *Advances in neural information processing systems*, 30, 2017.
- Xiao Wang, Guangyao Chen, Guangwu Qian, Pengcheng Gao, Xiao-Yong Wei, Yaowei Wang, Yonghong Tian, and Wen Gao. Large-scale multi-modal pre-trained models: A comprehensive survey. *Machine Intelligence Research*, 20(4):447–482, 2023.
- Yuyang Wang, Jianren Wang, Zhonglin Cao, and Amir Barati Farimani. Molecular contrastive learning of representations via graph neural networks. *Nature Machine Intelligence*, 4(3):279–287, 2022.
- Chen Wei, Haoqi Fan, Saining Xie, Chao-Yuan Wu, Alan Yuille, and Christoph Feichtenhofer. Masked feature prediction for self-supervised visual pre-training. In *Proceedings of the IEEE/CVF Conference on Computer Vision and Pattern Recognition*, pp. 14668–14678, 2022.
- Tianyu Wu, Shizhu He, Jingping Liu, Siqi Sun, Kang Liu, Qing-Long Han, and Yang Tang. A brief overview of chatgpt: The history, status quo and potential future development. *IEEE/CAA Journal of Automatica Sinica*, 10(5):1122–1136, 2023.
- Liu Yang, Siting Liu, Tingwei Meng, and Stanley J Osher. In-context operator learning with data prompts for differential equation problems. *Proceedings of the National Academy of Sciences*, 120(39):e2310142120, 2023.
- Zhanhong Ye, Xiang Huang, Leheng Chen, Hongsheng Liu, Zidong Wang, and Bin Dong. Pde-former: Towards a foundation model for one-dimensional partial differential equations. *arXiv preprint arXiv:2402.12652*, 2024.
- Linhui Yu, Yansen Su, Yuansheng Liu, and Xiangxiang Zeng. Review of unsupervised pretraining strategies for molecules representation. *Briefings in functional genomics*, 20(5):323–332, 2021.
- Rui Zhang, Qi Meng, and Zhi-Ming Ma. Deciphering and integrating invariants for neural operator learning with various physical mechanisms. *National Science Review*, 11(4):nwad336, 2024.
- Anthony Zhou and Amir Barati Farimani. Masked autoencoders are pde learners. *arXiv preprint arXiv:2403.17728*, 2024.
- Anthony Zhou, Cooper Lorsung, Amir Pouya Hemmasian, and Amir Barati Farimani. Strategies for pre-training neural operators. *arXiv preprint arXiv:2406.08473*, 2024.

A Appendix

All the results are presented in detail in this section. The reported metrics are the next-step prediction error and the average error over the next five autoregressive rollout steps of the model. C0 is the model trained from a random initialization and the rest are pretrained models with different fine-tuning configurations as specified in table 1.

Table 2: **Results for Diffusion $\nu = 0.001$.** Average rL_2 loss in percentage, and the relative change compared to C0 (no pretraining) in parenthesis. Negative changes indicate improvement.

| #samples | rollout | C0 | C1 | C2 | C3 | C4 | C5 | C6 | C7 | C8 |
|----------|---------|-------|---------------|---------------|---------------|---------------|---------------|--------------|---------------|--------------|
| 1 | r=1 | 15.42 | 6.08(-60.6%) | 3.79(-75.4%) | 0.93(-93.9%) | 1.06(-93.1%) | 1.66(-89.2%) | 1.55(-89.9%) | 0.99(-93.6%) | 1.84(-88.1%) |
| | r=5 | 30.55 | 14.41(-52.8%) | 13.33(-56.4%) | 2.55(-91.6%) | 3.06(-90.0%) | 5.05(-83.5%) | 4.73(-84.5%) | 2.81(-90.8%) | 5.08(-83.4%) |
| 2 | r=1 | 9.82 | 3.26(-66.8%) | 2.37(-75.8%) | 0.62(-93.7%) | 0.78(-92.0%) | 1.32(-86.6%) | 1.05(-89.3%) | 0.62(-93.7%) | 1.67(-83.0%) |
| | r=5 | 17.43 | 7.42(-57.4%) | 8.23(-52.8%) | 1.68(-90.4%) | 2.23(-87.2%) | 4.09(-76.5%) | 3.13(-82.0%) | 1.70(-90.2%) | 4.24(-75.7%) |
| 4 | r=1 | 1.67 | 0.31(-81.3%) | 0.56(-66.4%) | 0.41(-75.5%) | 0.69(-58.5%) | 0.59(-64.4%) | 0.47(-71.7%) | 0.46(-72.4%) | 0.34(-79.9%) |
| | r=5 | 4.08 | 0.76(-81.5%) | 1.50(-63.3%) | 1.00(-75.5%) | 1.93(-52.8%) | 1.60(-60.9%) | 1.25(-69.5%) | 1.19(-70.9%) | 0.84(-79.5%) |
| 8 | r=1 | 0.71 | 0.19(-72.7%) | 0.37(-47.3%) | 0.33(-53.1%) | 0.61(-14.3%) | 0.43(-39.6%) | 0.36(-49.6%) | 0.34(-51.7%) | 0.24(-66.5%) |
| | r=5 | 1.91 | 0.42(-77.9%) | 0.95(-49.9%) | 0.77(-59.6%) | 1.67(-12.4%) | 1.07(-43.7%) | 0.87(-54.1%) | 0.82(-56.7%) | 0.56(-70.5%) |
| 16 | r=1 | 0.44 | 0.21(-52.4%) | 0.30(-33.0%) | 0.35(-19.9%) | 0.60(+34.3%) | 0.40(-10.4%) | 0.32(-28.5%) | 0.32(-27.4%) | 0.22(-49.5%) |
| | r=5 | 1.13 | 0.47(-57.9%) | 0.74(-34.7%) | 0.83(-26.6%) | 1.62(+44.0%) | 0.97(-13.6%) | 0.74(-34.2%) | 0.75(-33.5%) | 0.52(-53.8%) |
| 32 | r=1 | 0.27 | 0.16(-40.3%) | 0.21(-23.0%) | 0.32(+17.6%) | 0.62(+130.0%) | 0.40(+49.3%) | 0.30(+11.0%) | 0.34(+27.6%) | 0.20(-27.4%) |
| | r=5 | 0.64 | 0.33(-48.6%) | 0.47(-27.0%) | 0.71(+10.6%) | 1.70(+165.5%) | 0.98(+52.5%) | 0.67(+5.2%) | 0.81(+26.1%) | 0.44(-31.0%) |
| 64 | r=1 | 0.20 | 0.15(-25.0%) | 0.18(-11.8%) | 0.33(+63.9%) | 0.62(+209.1%) | 0.37(+87.4%) | 0.29(+45.8%) | 0.31(+54.2%) | 0.19(-4.8%) |
| | r=5 | 0.45 | 0.30(-33.4%) | 0.38(-14.7%) | 0.74(+65.5%) | 1.70(+280.9%) | 0.89(+100.5%) | 0.65(+44.9%) | 0.70(+58.2%) | 0.43(-3.9%) |
| 128 | r=1 | 0.19 | 0.14(-25.1%) | 0.16(-13.6%) | 0.31(+63.4%) | 0.57(+202.4%) | 0.38(+99.6%) | 0.28(+50.6%) | 0.29(+52.8%) | 0.19(-0.5%) |
| | r=5 | 0.41 | 0.28(-33.0%) | 0.34(-16.5%) | 0.68(+66.4%) | 1.55(+277.7%) | 0.90(+120.4%) | 0.62(+52.0%) | 0.65(+58.0%) | 0.42(+2.8%) |
| 256 | r=1 | 0.18 | 0.13(-27.6%) | 0.17(-6.8%) | 0.33(+88.6%) | 0.55(+208.9%) | 0.35(+99.3%) | 0.28(+60.1%) | 0.32(+79.3%) | 0.19(+4.6%) |
| | r=5 | 0.38 | 0.24(-36.3%) | 0.35(-8.8%) | 0.76(+100.2%) | 1.48(+289.4%) | 0.84(+121.9%) | 0.62(+63.8%) | 0.73(+91.3%) | 0.42(+9.9%) |
| 512 | r=1 | 0.22 | 0.13(-40.9%) | 0.17(-20.0%) | 0.31(+42.4%) | 0.60(+175.8%) | 0.35(+62.4%) | 0.29(+31.1%) | 0.29(+32.4%) | 0.18(-16.4%) |
| | r=5 | 0.49 | 0.24(-50.0%) | 0.37(-24.6%) | 0.69(+42.0%) | 1.65(+238.9%) | 0.84(+72.7%) | 0.63(+28.6%) | 0.65(+33.8%) | 0.41(-15.5%) |
| 1024 | r=1 | 0.17 | 0.13(-23.7%) | 0.17(-1.1%) | 0.34(+101.6%) | 0.60(+259.4%) | 0.37(+121.8%) | 0.29(+74.3%) | 0.32(+88.8%) | 0.18(+8.5%) |
| | r=5 | 0.35 | 0.24(-30.9%) | 0.34(-1.2%) | 0.77(+120.2%) | 1.65(+373.4%) | 0.88(+151.5%) | 0.64(+84.5%) | 0.72(+107.7%) | 0.41(+16.9%) |

Table 3: **Results for Diffusion $\nu = 0.002$.** Average rL_2 loss in percentage, and the relative change compared to C0 (no pretraining) in paranthesis. Negative changes indicate improvement.

| #samples | rollout | C0 | C1 | C2 | C3 | C4 | C5 | C6 | C7 | C8 |
|----------|---------|-------|---------------|---------------|--------------|---------------|--------------|--------------|--------------|--------------|
| 1 | r=1 | 17.29 | 7.45(-56.9%) | 3.21(-81.4%) | 0.97(-94.4%) | 1.08(-93.8%) | 1.84(-89.4%) | 1.61(-90.7%) | 0.87(-95.0%) | 1.37(-92.0%) |
| | r=5 | 32.67 | 16.72(-48.8%) | 10.53(-67.8%) | 2.68(-91.8%) | 3.09(-90.5%) | 5.81(-82.2%) | 4.83(-85.2%) | 2.42(-92.6%) | 3.87(-88.1%) |
| 2 | r=1 | 10.21 | 3.66(-64.1%) | 2.49(-75.7%) | 0.71(-93.1%) | 0.81(-92.1%) | 1.18(-88.4%) | 0.89(-91.3%) | 0.66(-93.6%) | 1.07(-89.5%) |
| | r=5 | 17.69 | 7.64(-56.8%) | 8.78(-50.4%) | 1.91(-89.2%) | 2.26(-87.2%) | 3.61(-79.6%) | 2.47(-86.1%) | 1.79(-89.9%) | 2.87(-83.8%) |
| 4 | r=1 | 1.94 | 0.31(-84.2%) | 0.57(-70.8%) | 0.43(-78.0%) | 0.78(-59.9%) | 0.50(-74.0%) | 0.47(-75.8%) | 0.43(-77.9%) | 0.29(-85.0%) |
| | r=5 | 4.63 | 0.75(-83.9%) | 1.50(-67.6%) | 0.98(-78.8%) | 2.12(-54.3%) | 1.27(-72.5%) | 1.19(-74.3%) | 1.08(-76.8%) | 0.71(-84.6%) |
| 8 | r=1 | 0.73 | 0.20(-72.8%) | 0.34(-54.0%) | 0.32(-56.8%) | 0.61(-17.0%) | 0.38(-48.8%) | 0.32(-55.7%) | 0.32(-56.6%) | 0.22(-69.7%) |
| | r=5 | 1.93 | 0.44(-77.2%) | 0.83(-56.9%) | 0.68(-64.8%) | 1.59(-17.4%) | 0.87(-54.8%) | 0.74(-61.9%) | 0.73(-62.1%) | 0.51(-73.6%) |
| 16 | r=1 | 0.52 | 0.21(-60.0%) | 0.26(-49.9%) | 0.37(-28.3%) | 0.66(+26.7%) | 0.38(-28.1%) | 0.31(-40.3%) | 0.30(-42.5%) | 0.20(-62.4%) |
| | r=5 | 1.29 | 0.45(-64.8%) | 0.61(-52.7%) | 0.82(-36.4%) | 1.75(+35.7%) | 0.86(-32.9%) | 0.68(-46.9%) | 0.67(-47.6%) | 0.44(-66.1%) |
| 32 | r=1 | 0.34 | 0.17(-49.7%) | 0.20(-41.5%) | 0.35(+4.0%) | 0.62(+84.6%) | 0.36(+6.4%) | 0.31(-7.0%) | 0.28(-15.9%) | 0.17(-49.0%) |
| | r=5 | 0.80 | 0.35(-56.9%) | 0.42(-48.0%) | 0.76(-5.6%) | 1.64(+104.9%) | 0.82(+2.2%) | 0.68(-14.7%) | 0.62(-23.0%) | 0.37(-53.4%) |
| 64 | r=1 | 0.21 | 0.14(-34.4%) | 0.17(-22.5%) | 0.33(+54.2%) | 0.66(+210.8%) | 0.34(+60.6%) | 0.28(+31.0%) | 0.29(+35.4%) | 0.17(-19.2%) |
| | r=5 | 0.46 | 0.26(-43.4%) | 0.33(-29.3%) | 0.69(+49.8%) | 1.77(+282.5%) | 0.77(+66.0%) | 0.58(+26.3%) | 0.63(+36.7%) | 0.37(-19.0%) |
| 128 | r=1 | 0.23 | 0.14(-37.7%) | 0.17(-28.0%) | 0.32(+39.0%) | 0.65(+180.0%) | 0.33(+43.1%) | 0.29(+24.3%) | 0.28(+21.0%) | 0.17(-28.2%) |
| | r=5 | 0.50 | 0.28(-44.6%) | 0.33(-34.2%) | 0.66(+32.8%) | 1.69(+239.7%) | 0.73(+45.9%) | 0.59(+18.0%) | 0.60(+20.3%) | 0.36(-28.0%) |
| 256 | r=1 | 0.18 | 0.14(-24.5%) | 0.16(-13.9%) | 0.35(+88.4%) | 0.58(+211.9%) | 0.33(+80.9%) | 0.30(+61.6%) | 0.29(+59.1%) | 0.16(-12.9%) |
| | r=5 | 0.38 | 0.26(-32.2%) | 0.31(-20.1%) | 0.73(+91.5%) | 1.48(+286.7%) | 0.74(+91.6%) | 0.64(+67.4%) | 0.64(+67.2%) | 0.35(-9.3%) |
| 512 | r=1 | 0.19 | 0.12(-36.2%) | 0.17(-13.6%) | 0.36(+86.9%) | 0.59(+204.8%) | 0.34(+76.6%) | 0.29(+51.0%) | 0.30(+56.4%) | 0.17(-13.7%) |
| | r=5 | 0.41 | 0.23(-44.3%) | 0.33(-19.4%) | 0.78(+91.3%) | 1.54(+277.6%) | 0.76(+86.8%) | 0.61(+50.2%) | 0.68(+65.8%) | 0.36(-11.4%) |
| 1024 | r=1 | 0.20 | 0.14(-31.9%) | 0.19(-7.4%) | 0.33(+63.4%) | 0.66(+230.2%) | 0.34(+71.9%) | 0.29(+47.0%) | 0.30(+48.5%) | 0.16(-18.9%) |
| | r=5 | 0.42 | 0.25(-40.0%) | 0.37(-12.7%) | 0.68(+62.4%) | 1.75(+315.7%) | 0.76(+80.7%) | 0.62(+46.3%) | 0.65(+54.2%) | 0.35(-16.9%) |

Table 4: **Results for Diffusion** $\nu = 0.004$. Average rL_2 loss in percentage, and the relative change compared to C0 (no pretraining) in paranthesis. Negative changes indicate improvement.

| #samples | rollout | C0 | C1 | C2 | C3 | C4 | C5 | C6 | C7 | C8 |
|----------|---------|-------|---------------|---------------|--------------|---------------|--------------|--------------|--------------|--------------|
| 1 | r=1 | 19.36 | 8.15(-57.9%) | 3.37(-82.6%) | 1.56(-92.0%) | 1.92(-90.1%) | 1.98(-89.8%) | 2.25(-88.4%) | 1.11(-94.3%) | 1.70(-91.2%) |
| | r=5 | 34.60 | 16.93(-51.1%) | 11.68(-66.2%) | 4.19(-87.9%) | 5.04(-85.4%) | 6.29(-81.8%) | 6.53(-81.1%) | 2.89(-91.6%) | 4.54(-86.9%) |
| 2 | r=1 | 12.01 | 5.97(-50.3%) | 1.82(-84.9%) | 0.62(-94.9%) | 0.79(-93.4%) | 1.07(-91.1%) | 1.55(-87.1%) | 0.59(-95.1%) | 1.64(-86.3%) |
| | r=5 | 19.50 | 11.20(-42.6%) | 5.42(-72.2%) | 1.47(-92.5%) | 1.97(-89.9%) | 3.05(-84.3%) | 4.76(-75.6%) | 1.39(-92.9%) | 4.10(-79.0%) |
| 4 | r=1 | 1.69 | 0.33(-80.7%) | 0.50(-70.2%) | 0.46(-72.9%) | 0.76(-55.0%) | 0.51(-69.8%) | 0.50(-70.6%) | 0.42(-75.0%) | 0.29(-83.1%) |
| | r=5 | 3.92 | 0.71(-81.9%) | 1.21(-69.1%) | 0.93(-76.4%) | 1.81(-53.7%) | 1.13(-71.2%) | 1.11(-71.6%) | 0.90(-77.0%) | 0.60(-84.8%) |
| 8 | r=1 | 0.64 | 0.22(-65.0%) | 0.33(-48.2%) | 0.40(-38.1%) | 0.62(-2.6%) | 0.42(-33.7%) | 0.36(-44.5%) | 0.36(-43.3%) | 0.23(-63.6%) |
| | r=5 | 1.62 | 0.42(-74.1%) | 0.72(-55.4%) | 0.76(-52.6%) | 1.42(-12.1%) | 0.88(-45.7%) | 0.70(-56.8%) | 0.71(-55.9%) | 0.45(-72.0%) |
| 16 | r=1 | 0.59 | 0.25(-57.5%) | 0.32(-46.1%) | 0.41(-30.2%) | 0.67(+13.9%) | 0.46(-22.2%) | 0.37(-37.1%) | 0.36(-38.8%) | 0.22(-62.3%) |
| | r=5 | 1.37 | 0.49(-64.6%) | 0.68(-50.6%) | 0.80(-41.5%) | 1.58(+15.1%) | 0.97(-29.5%) | 0.73(-47.1%) | 0.71(-47.9%) | 0.42(-69.4%) |
| 32 | r=1 | 0.34 | 0.21(-39.0%) | 0.23(-33.8%) | 0.35(+3.0%) | 0.64(+85.7%) | 0.40(+17.5%) | 0.36(+6.2%) | 0.33(-4.5%) | 0.21(-38.6%) |
| | r=5 | 0.72 | 0.36(-49.6%) | 0.42(-41.5%) | 0.63(-12.0%) | 1.47(+104.3%) | 0.80(+11.0%) | 0.69(-3.4%) | 0.62(-14.1%) | 0.38(-46.9%) |
| 64 | r=1 | 0.31 | 0.17(-44.6%) | 0.21(-31.8%) | 0.41(+33.8%) | 0.63(+105.0%) | 0.39(+25.1%) | 0.32(+2.8%) | 0.33(+7.2%) | 0.19(-37.6%) |
| | r=5 | 0.61 | 0.26(-56.4%) | 0.37(-38.9%) | 0.78(+29.1%) | 1.45(+138.5%) | 0.74(+21.5%) | 0.57(-5.7%) | 0.62(+1.4%) | 0.34(-43.8%) |
| 128 | r=1 | 0.27 | 0.17(-36.2%) | 0.19(-28.5%) | 0.37(+37.4%) | 0.63(+131.3%) | 0.40(+45.6%) | 0.33(+22.3%) | 0.33(+21.2%) | 0.19(-28.8%) |
| | r=5 | 0.52 | 0.27(-48.5%) | 0.33(-35.9%) | 0.67(+30.3%) | 1.44(+178.2%) | 0.77(+48.3%) | 0.61(+17.1%) | 0.61(+18.5%) | 0.35(-32.4%) |
| 256 | r=1 | 0.27 | 0.17(-36.7%) | 0.19(-28.1%) | 0.40(+47.9%) | 0.65(+141.9%) | 0.41(+52.4%) | 0.34(+26.4%) | 0.33(+22.8%) | 0.19(-30.9%) |
| | r=5 | 0.50 | 0.26(-48.0%) | 0.32(-36.5%) | 0.73(+45.8%) | 1.50(+197.2%) | 0.81(+61.4%) | 0.63(+24.7%) | 0.62(+23.0%) | 0.33(-34.7%) |
| 512 | r=1 | 0.31 | 0.17(-44.8%) | 0.21(-34.2%) | 0.38(+20.4%) | 0.69(+121.1%) | 0.39(+25.0%) | 0.35(+11.5%) | 0.33(+3.9%) | 0.19(-39.6%) |
| | r=5 | 0.61 | 0.27(-56.3%) | 0.35(-42.4%) | 0.69(+12.7%) | 1.63(+167.3%) | 0.76(+24.3%) | 0.64(+5.2%) | 0.60(-0.8%) | 0.34(-45.0%) |
| 1024 | r=1 | 0.27 | 0.19(-31.2%) | 0.22(-19.4%) | 0.38(+41.7%) | 0.69(+155.4%) | 0.41(+50.6%) | 0.35(+29.7%) | 0.32(+19.7%) | 0.20(-26.6%) |
| | r=5 | 0.50 | 0.29(-41.6%) | 0.38(-24.4%) | 0.71(+40.0%) | 1.63(+222.1%) | 0.80(+58.5%) | 0.64(+26.3%) | 0.60(+18.7%) | 0.35(-30.1%) |

Table 5: **Results for Advection** $\beta = 0.1$. Average rL_2 loss in percentage, and the relative change compared to C0 (no pretraining) in paranthesis. Negative changes indicate improvement.

| #samples | rollout | C0 | C1 | C2 | C3 | C4 | C5 | C6 | C7 | C8 |
|----------|---------|-------|---------------|---------------|----------------|----------------|----------------|--------------|----------------|---------------|
| 1 | r=1 | 57.53 | 55.49(-3.5%) | 32.18(-44.1%) | 12.92(-77.5%) | 7.91(-86.3%) | 14.71(-74.4%) | >100 | 18.86(-67.2%) | 25.87(-55.0%) |
| | r=5 | >100 | >100 | >100 | 24.72(-100.0%) | 17.97(-100.0%) | 37.25(-100.0%) | >100 | 33.92(-100.0%) | >100 |
| 2 | r=1 | 34.24 | 54.90(+60.3%) | 22.57(-34.1%) | 7.38(-78.4%) | 4.72(-86.2%) | 15.02(-56.1%) | >100 | 13.83(-59.6%) | 14.31(-58.2%) |
| | r=5 | >100 | >100 | >100 | 14.21(-100.0%) | 10.16(-100.0%) | 47.16(-100.0%) | >100 | 23.62(-100.0%) | >100 |
| 4 | r=1 | 3.67 | 2.39(-34.9%) | 2.57(-30.1%) | 2.50(-31.8%) | 2.88(-21.7%) | 2.55(-30.7%) | 2.74(-25.4%) | 2.43(-33.9%) | 2.30(-37.4%) |
| | r=5 | 7.84 | 4.37(-44.3%) | 5.09(-35.1%) | 4.36(-44.4%) | 5.92(-24.5%) | 4.49(-42.7%) | 5.45(-30.5%) | 4.15(-47.1%) | 4.06(-48.2%) |
| 8 | r=1 | 2.77 | 2.51(-9.7%) | 2.32(-16.2%) | 2.37(-14.5%) | 2.71(-2.4%) | 2.41(-13.1%) | 2.55(-8.2%) | 2.33(-16.1%) | 2.16(-22.0%) |
| | r=5 | 5.56 | 4.31(-22.6%) | 4.46(-19.8%) | 3.97(-28.6%) | 5.45(-2.1%) | 4.19(-24.7%) | 4.80(-13.7%) | 3.97(-28.6%) | 3.79(-31.9%) |
| 16 | r=1 | 1.95 | 1.90(-2.7%) | 1.93(-1.3%) | 2.32(+19.0%) | 2.73(+39.8%) | 2.37(+21.2%) | 2.13(+9.1%) | 2.18(+11.6%) | 1.90(-2.7%) |
| | r=5 | 3.31 | 2.92(-11.8%) | 3.19(-3.5%) | 3.67(+10.8%) | 5.42(+63.7%) | 3.86(+16.7%) | 3.76(+13.4%) | 3.51(+6.0%) | 3.00(-9.4%) |
| 32 | r=1 | 1.75 | 1.71(-2.3%) | 1.76(+0.3%) | 2.26(+28.7%) | 2.59(+47.8%) | 2.32(+32.5%) | 1.96(+12.2%) | 2.22(+26.7%) | 1.84(+5.1%) |
| | r=5 | 2.61 | 2.39(-8.3%) | 2.60(-0.2%) | 3.47(+33.0%) | 5.00(+91.6%) | 3.66(+40.2%) | 3.24(+24.2%) | 3.44(+31.9%) | 2.79(+6.8%) |
| 64 | r=1 | 1.67 | 1.70(+1.9%) | 1.73(+3.9%) | 2.28(+37.0%) | 2.67(+60.4%) | 2.33(+40.1%) | 2.20(+32.0%) | 2.25(+34.9%) | 1.79(+7.8%) |
| | r=5 | 2.27 | 2.29(+0.6%) | 2.45(+7.6%) | 3.46(+52.0%) | 5.19(+128.3%) | 3.64(+60.0%) | 3.47(+52.5%) | 3.44(+51.1%) | 2.65(+16.6%) |
| 128 | r=1 | 1.65 | 1.64(-0.3%) | 1.69(+2.7%) | 2.25(+36.5%) | 2.68(+62.5%) | 2.36(+43.2%) | 2.15(+30.7%) | 2.25(+36.6%) | 1.84(+11.8%) |
| | r=5 | 2.19 | 2.13(-2.9%) | 2.32(+5.8%) | 3.39(+54.9%) | 5.22(+137.9%) | 3.71(+69.2%) | 3.38(+54.1%) | 3.41(+55.6%) | 2.73(+24.6%) |
| 256 | r=1 | 1.65 | 1.66(+0.3%) | 1.67(+1.1%) | 2.29(+38.7%) | 2.70(+63.2%) | 2.35(+42.2%) | 2.18(+32.1%) | 2.22(+34.1%) | 1.80(+8.9%) |
| | r=5 | 2.17 | 2.17(-0.3%) | 2.25(+3.5%) | 3.47(+59.5%) | 5.26(+141.7%) | 3.69(+69.6%) | 3.41(+56.7%) | 3.34(+53.7%) | 2.65(+22.0%) |
| 512 | r=1 | 1.60 | 1.65(+3.0%) | 1.69(+5.4%) | 2.27(+42.0%) | 2.67(+66.9%) | 2.31(+44.6%) | 2.11(+32.1%) | 2.23(+39.3%) | 1.79(+11.9%) |
| | r=5 | 2.03 | 2.15(+5.5%) | 2.30(+12.9%) | 3.40(+67.1%) | 5.20(+155.6%) | 3.59(+76.5%) | 3.28(+61.0%) | 3.38(+66.0%) | 2.63(+29.1%) |
| 1024 | r=1 | 1.62 | 1.65(+1.7%) | 1.68(+3.5%) | 2.29(+41.4%) | 2.65(+63.8%) | 2.31(+42.9%) | 2.21(+36.4%) | 2.27(+40.1%) | 1.78(+9.7%) |
| | r=5 | 2.09 | 2.13(+2.0%) | 2.26(+8.2%) | 3.45(+64.9%) | 5.14(+145.9%) | 3.57(+70.7%) | 3.42(+63.6%) | 3.42(+63.5%) | 2.59(+23.7%) |

Table 6: **Results for Advection $\beta = 0.4$.** Average rL_2 loss in percentage, and the relative change compared to C0 (no pretraining) in paranthesis. Negative changes indicate improvement.

| #samples | rollout | C0 | C1 | C2 | C3 | C4 | C5 | C6 | C7 | C8 |
|----------|---------|-------|--------------|---------------|---------------|-----------------|----------------|----------------|----------------|----------------|
| 1 | r=1 | 33.36 | 34.54(+3.5%) | 29.75(-10.8%) | 13.20(-60.4%) | 26.86(-19.5%) | 18.37(-44.9%) | 78.35(+134.9%) | 18.59(-44.3%) | 26.81(-19.6%) |
| | r=5 | >100 | >100 | >100 | >100 | >100 | 41.04(-100.0%) | >100 | 46.89(-100.0%) | >100 |
| 2 | r=1 | 29.71 | 27.36(-7.9%) | 27.05(-9.0%) | 9.68(-67.4%) | 20.77(-30.1%) | 13.25(-55.4%) | >100 | 12.99(-56.3%) | 20.74(-30.2%) |
| | r=5 | >100 | >100 | >100 | >100 | >100 | 23.40(-100.0%) | >100 | 48.15(-100.0%) | >100 |
| 4 | r=1 | 5.27 | 4.11(-21.9%) | 4.37(-17.0%) | 4.83(-8.2%) | 14.09(+167.6%) | 4.93(-6.3%) | 4.52(-14.1%) | 4.50(-14.6%) | 8.91(+69.3%) |
| | r=5 | 11.38 | 11.34(-0.3%) | 8.99(-21.0%) | 11.71(+2.9%) | >100 | 8.96(-21.3%) | 9.92(-12.8%) | 8.81(-22.6%) | 24.57(+115.9%) |
| 8 | r=1 | 3.91 | 3.46(-11.6%) | 3.65(-6.8%) | 3.90(-0.2%) | 12.71(+225.1%) | 4.45(+13.9%) | 3.83(-2.1%) | 3.81(-2.5%) | 6.40(+63.7%) |
| | r=5 | 9.07 | 6.48(-28.6%) | 10.88(+19.9%) | 8.68(-4.4%) | 41.73(+360.0%) | 7.85(-13.5%) | 8.52(-6.1%) | 7.44(-18.0%) | 16.78(+84.9%) |
| 16 | r=1 | 2.59 | 2.60(+0.3%) | 2.72(+5.0%) | 3.37(+30.3%) | 11.64(+349.8%) | 4.32(+66.8%) | 3.17(+22.4%) | 3.46(+33.6%) | 4.73(+82.9%) |
| | r=5 | 4.55 | 4.29(-5.6%) | 4.95(+8.7%) | 6.58(+44.5%) | 38.78(+752.0%) | 7.16(+57.3%) | 6.31(+38.6%) | 6.44(+41.4%) | 11.91(+161.6%) |
| 32 | r=1 | 2.11 | 2.09(-0.9%) | 2.24(+6.3%) | 3.15(+49.3%) | 11.14(+427.9%) | 4.25(+101.6%) | 2.91(+38.0%) | 3.29(+56.1%) | 3.96(+87.9%) |
| | r=5 | 3.32 | 3.10(-6.7%) | 3.60(+8.6%) | 5.51(+66.1%) | 37.01(+1015.3%) | 6.60(+98.9%) | 5.54(+66.9%) | 5.57(+68.0%) | 9.56(+188.1%) |
| 64 | r=1 | 1.94 | 1.90(-2.0%) | 2.05(+5.5%) | 3.00(+54.9%) | 11.46(+491.0%) | 4.25(+119.1%) | 2.76(+42.3%) | 3.58(+84.5%) | 3.98(+105.0%) |
| | r=5 | 2.73 | 2.58(-5.3%) | 2.98(+9.2%) | 5.12(+87.8%) | 36.71(+1245.0%) | 6.60(+142.0%) | 5.10(+86.8%) | 5.79(+112.1%) | 9.89(+262.3%) |
| 128 | r=1 | 1.84 | 1.92(+4.5%) | 1.95(+5.7%) | 3.13(+69.9%) | 11.41(+520.0%) | 4.23(+130.1%) | 2.80(+51.9%) | 3.24(+76.0%) | 3.62(+96.6%) |
| | r=5 | 2.43 | 2.54(+4.5%) | 2.66(+9.2%) | 5.30(+117.6%) | 36.00(+1379.2%) | 6.39(+162.4%) | 5.13(+110.7%) | 5.28(+116.8%) | 8.54(+250.9%) |
| 256 | r=1 | 1.88 | 1.93(+2.6%) | 1.91(+1.8%) | 3.22(+71.3%) | 11.49(+511.1%) | 4.31(+129.2%) | 2.94(+56.3%) | 3.72(+97.5%) | 3.84(+104.4%) |
| | r=5 | 2.51 | 2.53(+0.5%) | 2.55(+1.5%) | 5.67(+125.6%) | 36.73(+1361.1%) | 6.49(+158.2%) | 5.42(+115.5%) | 5.94(+136.3%) | 9.50(+277.8%) |
| 512 | r=1 | 1.75 | 1.82(+4.3%) | 1.92(+10.1%) | 3.23(+84.5%) | 11.57(+561.5%) | 4.29(+145.3%) | 2.73(+56.3%) | 3.15(+80.2%) | 3.84(+119.6%) |
| | r=5 | 2.19 | 2.31(+5.5%) | 2.53(+15.5%) | 5.42(+147.0%) | 35.94(+1538.9%) | 6.62(+202.0%) | 4.98(+127.2%) | 5.27(+140.4%) | 9.57(+336.4%) |
| 1024 | r=1 | 1.80 | 1.84(+2.2%) | 1.87(+4.2%) | 3.04(+69.2%) | 11.42(+535.5%) | 4.31(+140.0%) | 2.72(+51.2%) | 3.47(+93.2%) | 3.67(+104.2%) |
| | r=5 | 2.31 | 2.32(+0.4%) | 2.42(+4.8%) | 4.86(+110.2%) | 35.97(+1457.0%) | 6.60(+185.6%) | 4.89(+111.5%) | 5.64(+144.2%) | 8.85(+283.3%) |

Table 7: **Results for Advection $\beta = 1.0$.** Average rL_2 loss in percentage, and the relative change compared to C0 (no pretraining) in paranthesis. Negative changes indicate improvement.

| #samples | rollout | C0 | C1 | C2 | C3 | C4 | C5 | C6 | C7 | C8 |
|----------|---------|-------|---------------|---------------|----------------|-----------------|----------------|---------------|----------------|-----------------|
| 1 | r=1 | 33.41 | 34.49(+3.2%) | 24.32(-27.2%) | 25.86(-22.6%) | 91.66(+174.4%) | 26.89(-19.5%) | 27.02(-19.1%) | 26.96(-19.3%) | 65.14(+95.0%) |
| | r=5 | >100 | >100 | >100 | >100 | >100 | 85.98(-66.5%) | >100 | >100 | >100 |
| 2 | r=1 | 24.63 | 34.99(+42.1%) | 14.79(-40.0%) | 16.15(-34.4%) | 78.68(+219.4%) | 16.83(-31.7%) | 38.39(+55.9%) | 16.86(-31.6%) | 41.10(+66.8%) |
| | r=5 | >100 | >100 | >100 | 88.24(-100.0%) | >100 | 66.09(-100.0%) | >100 | 31.88(-100.0%) | >100 |
| 4 | r=1 | 4.76 | 4.04(-15.1%) | 4.38(-8.1%) | 6.86(+44.0%) | 57.32(+1103.7%) | 5.64(+18.4%) | 4.93(+3.5%) | 5.57(+16.9%) | 22.51(+372.8%) |
| | r=5 | 10.78 | 9.01(-16.4%) | 10.39(-3.6%) | 83.19(+671.8%) | >100 | 14.37(+33.3%) | 13.12(+21.7%) | 12.74(+18.2%) | 71.41(+562.5%) |
| 8 | r=1 | 3.49 | 3.23(-7.4%) | 3.47(-0.6%) | 4.99(+42.8%) | 47.71(+1265.9%) | 4.68(+34.1%) | 4.03(+15.4%) | 4.55(+30.1%) | 14.17(+305.8%) |
| | r=5 | 7.80 | 6.92(-11.3%) | 7.74(-0.8%) | 19.24(+146.6%) | >100 | 11.24(+44.1%) | 10.16(+30.3%) | 9.91(+27.0%) | 46.89(+501.0%) |
| 16 | r=1 | 2.48 | 2.38(-3.9%) | 2.66(+7.4%) | 3.85(+55.6%) | 40.02(+1515.2%) | 4.56(+83.9%) | 3.50(+41.1%) | 4.13(+66.5%) | 10.44(+321.5%) |
| | r=5 | 4.79 | 4.53(-5.5%) | 5.46(+14.0%) | 13.85(+189.1%) | >100 | 10.57(+120.6%) | 8.32(+73.5%) | 8.69(+81.4%) | 31.74(+562.5%) |
| 32 | r=1 | 2.10 | 2.10(-0.1%) | 2.21(+5.3%) | 3.25(+54.6%) | 36.02(+1613.0%) | 4.39(+108.7%) | 3.18(+51.1%) | 3.69(+75.3%) | 8.82(+319.5%) |
| | r=5 | 3.62 | 3.56(-1.7%) | 4.05(+11.9%) | 9.23(+155.0%) | >100 | 10.04(+177.4%) | 7.23(+99.7%) | 7.35(+103.2%) | 30.69(+747.9%) |
| 64 | r=1 | 1.99 | 1.92(-3.2%) | 2.07(+4.2%) | 3.32(+67.0%) | 35.28(+1675.3%) | 4.37(+120.1%) | 3.30(+65.9%) | 3.77(+89.6%) | 7.59(+282.1%) |
| | r=5 | 3.10 | 2.94(-5.1%) | 3.44(+11.1%) | 9.37(+202.4%) | >100 | 10.01(+223.1%) | 7.50(+142.1%) | 7.50(+142.1%) | 25.69(+729.2%) |
| 128 | r=1 | 1.88 | 1.98(+5.2%) | 2.02(+7.5%) | 3.07(+62.8%) | 32.71(+1636.9%) | 4.34(+130.3%) | 3.19(+69.4%) | 3.76(+99.4%) | 7.85(+317.0%) |
| | r=5 | 2.81 | 2.99(+6.4%) | 3.23(+15.1%) | 7.82(+178.7%) | >100 | 9.96(+255.1%) | 7.27(+158.9%) | 7.44(+165.1%) | 27.61(+883.9%) |
| 256 | r=1 | 1.86 | 1.93(+4.0%) | 1.92(+3.4%) | 3.03(+63.4%) | 35.44(+1810.0%) | 4.11(+121.6%) | 3.10(+67.3%) | 3.81(+105.2%) | 8.15(+339.3%) |
| | r=5 | 2.69 | 2.85(+5.9%) | 2.88(+7.2%) | 6.65(+147.3%) | >100 | 9.16(+240.5%) | 6.96(+158.8%) | 7.58(+181.7%) | 32.01(+1090.4%) |
| 512 | r=1 | 1.85 | 1.93(+4.3%) | 1.93(+4.3%) | 3.03(+63.8%) | 35.44(+1814.2%) | 4.14(+123.6%) | 3.09(+66.8%) | 3.62(+95.6%) | 7.72(+317.1%) |
| | r=5 | 2.68 | 2.82(+5.1%) | 2.94(+9.5%) | 6.68(+149.0%) | >100 | 9.31(+247.0%) | 6.86(+155.7%) | 7.01(+161.4%) | 27.68(+932.1%) |
| 1024 | r=1 | 1.85 | 1.90(+2.2%) | 1.98(+6.6%) | 3.10(+67.2%) | 36.42(+1863.8%) | 4.30(+131.7%) | 3.40(+83.1%) | 3.63(+95.8%) | 7.71(+315.6%) |
| | r=5 | 2.67 | 2.75(+3.0%) | 3.02(+13.2%) | 7.57(+184.0%) | >100 | 9.75(+265.6%) | 7.88(+195.6%) | 7.11(+166.5%) | 28.72(+976.8%) |