

RETHINKING EMBEDDING COUPLING IN PRE-TRAINED LANGUAGE MODELS

Hyung Won Chung^{*†}
Google Research
hwchung@google.com

Thibault Févry^{*†}
thibaultfevry@gmail.com

Henry Tsai
Google Research
henrytsai@google.com

Melvin Johnson
Google Research
melvinp@google.com

Sebastian Ruder
DeepMind
ruder@google.com

ABSTRACT

We re-evaluate the standard practice of sharing weights between input and output embeddings in state-of-the-art pre-trained language models. We show that decoupled embeddings provide increased modeling flexibility, allowing us to significantly improve the efficiency of parameter allocation in the input embedding of multilingual models. By reallocating the input embedding parameters in the Transformer layers, we achieve dramatically better performance on standard natural language understanding tasks with the same number of parameters during fine-tuning. We also show that allocating additional capacity to the output embedding provides benefits to the model that persist through the fine-tuning stage even though the output embedding is discarded after pre-training. Our analysis shows that larger output embeddings prevent the model’s last layers from overspecializing to the pre-training task and encourage Transformer representations to be more general and more transferable to other tasks and languages. Harnessing these findings, we are able to train models that achieve strong performance on the XTREME benchmark without increasing the number of parameters at the fine-tuning stage.

1 INTRODUCTION

The performance of models in natural language processing (NLP) has dramatically improved in recent years, mainly driven by advances in transfer learning from large amounts of unlabeled data (Howard & Ruder, 2018; Devlin et al., 2019). The most successful paradigm consists of pre-training a large Transformer (Vaswani et al., 2017) model with a self-supervised loss and fine-tuning it on data of a downstream task (Ruder et al., 2019). Despite its empirical success, inefficiencies have been observed related to the training duration (Liu et al., 2019b), pre-training objective (Clark et al., 2020b), and training data (Conneau et al., 2020a), among others. In this paper, we reconsider a modeling assumption that may have a similarly pervasive practical impact: the coupling of input and output embeddings¹ in state-of-the-art pre-trained language models.

State-of-the-art pre-trained language models (Devlin et al., 2019; Liu et al., 2019b) and their multilingual counterparts (Devlin et al., 2019; Conneau et al., 2020a) have inherited the practice of embedding coupling from their language model predecessors (Press & Wolf, 2017; Inan et al., 2017). However, in contrast to their language model counterparts, embedding coupling in encoder-only pre-trained models such as Devlin et al. (2019) is only useful during pre-training since output embeddings are generally discarded after fine-tuning.² In addition, given the willingness of researchers to exchange additional compute during pre-training for improved downstream performance (Raffel

^{*}equal contribution

[†]Work done as a member of the Google AI Residency Program.

¹Output embedding is sometimes referred to as “output weights”, i.e., the weight matrix in the output projection in a language model.

²We focus on encoder-only models, and do not consider encoder-decoder models like T5 (Raffel et al., 2020) where none of the embedding matrices are discarded after pre-training. Output embeddings may also be

Table 1: Overview of the number of parameters in (coupled) embedding matrices of state-of-the-art multilingual (top) and monolingual (bottom) models with regard to overall parameter budget. $|V|$: vocabulary size. N , N_{emb} : number of parameters in total and in the embedding matrix respectively.

Model	Languages	$ V $	N	N_{emb}	%Emb.
mBERT (Devlin et al., 2019)	104	120k	178M	92M	52%
XLM-R _{Base} (Conneau et al., 2020a)	100	250k	270M	192M	71%
XLM-R _{Large} (Conneau et al., 2020a)	100	250k	550M	256M	47%
BERT _{Base} (Devlin et al., 2019)	1	30k	110M	23M	21%
BERT _{Large} (Devlin et al., 2019)	1	30k	335M	31M	9%

et al., 2020; Brown et al., 2020) and the fact that pre-trained models are often used for inference millions of times (Wolf et al., 2019), pre-training-specific parameter savings are less important overall.

On the other hand, tying input and output embeddings constrains the model to use the same dimensionality for both embeddings. This restriction limits the researcher’s flexibility in parameterizing the model and can lead to allocating too much capacity to the input embeddings, which may be wasteful. This is a problem particularly for multilingual models, which require large vocabularies with high-dimensional embeddings that make up between 47–71% of the entire parameter budget (Table 1), suggesting an inefficient parameter allocation.

In this paper, we systematically study the impact of embedding coupling on state-of-the-art pre-trained language models, focusing on multilingual models. First, we observe that while naively decoupling the input and output embedding *parameters* does not consistently improve downstream evaluation metrics, decoupling their *shapes* comes with a host of benefits. In particular, it allows us to independently modify the input and output embedding dimensions. We show that the input embedding dimension can be safely reduced without affecting downstream performance. Since the output embedding is discarded after pre-training, we can increase its dimension, which improves fine-tuning accuracy and outperforms other capacity expansion strategies. By reinvesting saved parameters to the width and depth of the Transformer layers, we furthermore achieve significantly improved performance over a strong mBERT (Devlin et al., 2019) baseline on multilingual tasks from the XTREME benchmark (Hu et al., 2020). Finally, we combine our techniques in a Rebalanced mBERT (RemBERT) model that outperforms XLM-R (Conneau et al., 2020a), the state-of-the-art cross-lingual model while having been pre-trained on $3.5\times$ fewer tokens and 10 more languages.

We thoroughly investigate reasons for the benefits of embedding decoupling. We observe that an increased output embedding size enables a model to improve on the pre-training task, which correlates with downstream performance. We also find that it leads to Transformers that are more transferable across tasks and languages—particularly for the upper-most layers. Overall, larger output embeddings prevent the model’s last layers from over-specializing to the pre-training task (Zhang et al., 2020; Tamkin et al., 2020), which enables training of more general Transformer models.

2 RELATED WORK

Embedding coupling Sharing input and output embeddings in neural language models was proposed to improve perplexity and motivated based on embedding similarity (Press & Wolf, 2017) as well as by theoretically showing that the output probability space can be constrained to a subspace governed by the embedding matrix for a restricted case (Inan et al., 2017). Embedding coupling is also common in neural machine translation models where it reduces model complexity (Firat et al., 2016) and saves memory (Johnson et al., 2017), in recent state-of-the-art language models (Melis et al., 2020), as well as all pre-trained models we are aware of (Devlin et al., 2019; Liu et al., 2019b).

Transferability of representations Representations of large pre-trained models in computer vision and NLP have been observed to transition from general to task-specific from the first to the useful for domain-adaptive pre-training (Howard & Ruder, 2018; Gururangan et al., 2020), probing (Elazar & Goldberg, 2019), and tasks that can be cast in the pre-training objective (Amrami & Goldberg, 2019).

last layer (Yosinski et al., 2014; Howard & Ruder, 2018; Liu et al., 2019a). In Transformer models, the last few layers have been shown to become specialized to the MLM task and—as a result—less transferable (Zhang et al., 2020; Tamkin et al., 2020).

Multilingual models Recent multilingual models are pre-trained on data covering around 100 languages using a subword vocabulary shared across all languages (Devlin et al., 2019; Pires et al., 2019; Conneau et al., 2020a). In order to achieve reasonable performance for most languages, these models need to allocate sufficient capacity for each language, known as the curse of multilinguality (Conneau et al., 2020a; Pfeiffer et al., 2020). As a result, such multilingual models have large vocabularies with large embedding sizes to ensure that tokens in all languages are adequately represented.

Efficient models Most work on more efficient pre-trained models focuses on pruning or distillation (Hinton et al., 2015). Pruning approaches remove parts of the model, typically attention heads (Michel et al., 2019; Voita et al., 2019) while distillation approaches distill a large pre-trained model into a smaller one (Sun et al., 2020). Distillation can be seen as an alternative form of allocating pre-training capacity via a large teacher model. However, distilling a pre-trained model is expensive (Sanh et al., 2019) and requires overcoming architecture differences and balancing training data and loss terms (Mukherjee & Awadallah, 2020). Our proposed methods are simpler and complementary to distillation as they can improve the pre-training of compact student models (Turc et al., 2019).

3 EXPERIMENTAL METHODOLOGY

Efficiency of models has been measured along different dimensions, from the number of floating point operations (Schwartz et al., 2019) to their runtime (Zhou et al., 2020). We follow previous work (Sun et al., 2020) and compare models in terms of their number of parameters during fine-tuning (see Appendix A.1 for further justification of this setting). For completeness, we generally report the number of pre-training (PT) and fine-tuning (FT) parameters.

Baseline Our baseline has the same architecture as multilingual BERT (mBERT; Devlin et al., 2019). It consists of 12 Transformer layers with a hidden size H of 768. Input and output embeddings are coupled and have the same dimensionality E as the hidden size, i.e. $E_{\text{out}} = E_{\text{in}} = H$. The total number of parameters during pre-training and fine-tuning is 177M (see Appendix A.2 for further details). We train variants of this model that differ in certain hyper-parameters but otherwise are trained under the same conditions to ensure a fair comparison.

Tasks For our experiments, we employ tasks from the XTREME benchmark (Hu et al., 2020) that require fine-tuning, including the XNLI (Conneau et al., 2018), NER (Pan et al., 2017), PAWS-X (Yang et al., 2019), XQuAD (Artetxe et al., 2020), MLQA (Lewis et al., 2020), and TyDiQA-GoldP (Clark et al., 2020a) datasets. We provide details for them in Appendix A.4. We average results across three fine-tuning runs and evaluate on the dev sets unless otherwise stated.

4 EMBEDDING DECOUPLING REVISITED

Naïve decoupling Embeddings make up a large fraction of the parameter budget in state-of-the-art multilingual models (see Table 1). We now study the effect of embedding decoupling on such models. In Table 2, we show the impact of decoupling the input and output embeddings in our baseline model (§3) with coupled embeddings. Naïvely decoupling the output embedding matrix slightly improves the performance as evidenced by a 0.4 increase on average. However, the gain is not uniformly observed in all tasks. Overall, these results suggest that decoupling the embedding matrices naïvely while keeping the dimensionality fixed does not greatly affect the performance of the model. What is more important, however, is that decoupling the input and output embeddings decouples the *shapes*, endowing significant modeling flexibility, which we investigate in the following.

Input vs output embeddings Decoupling input and output embeddings allows us to flexibly change the dimensionality of both matrices and to determine which one is more important for good transfer performance of the model. To this end, we compare the performance of a model with

Table 2: Effect of decoupling the input and output embedding matrices on performance on multiple tasks in XTREME. PT: Pre-training. FT: Fine-tuning. The decoupled model has input and output embeddings with the same size ($E = 768$) as the embedding of the coupled model. The Transformer parts of the models are the same (i.e., 12 layers with $H = 768$).

	# PT params	# FT params	XNLI Acc	NER F1	PAWS-X Acc	XQuAD EM/F1	MLQA EM/F1	TyDi-GoldP EM/F1	Avg
Coupled	177M	177M	70.7	69.2	85.3	46.2/63.2	37.3/53.1	40.7/56.7	62.3
Decoupled	269M	177M	71.3	68.9	85.0	46.9/63.8	37.3/53.1	42.8/58.1	62.7

Table 3: Performance of models with a large input and small output embedding size and vice versa. Both models have 12 Transformer layers with $H = 768$.

	# PT params	# FT params	XNLI Acc	NER F1	PAWS-X Acc	XQuAD EM/F1	MLQA EM/F1	TyDi-GoldP EM/F1	Avg
$E_{in} = 768, E_{out} = 128$	192M	177M	70.0	68.3	84.3	42.0/ 60.8	34.7/50.9	35.2/ 52.2	60.1
$E_{in} = 128, E_{out} = 768$	192M	100M	70.4	67.6	84.9	43.9/60.0	34.6/49.5	37.8/51.0	60.2

$E_{in} = 768, E_{out} = 128$ to that of a model with $E_{in} = 128, E_{out} = 768$ ³ (the remaining hyper-parameters are the same as the baseline in §3). During fine-tuning, the latter model has 43% fewer parameters. We show the results in Table 3. Surprisingly, the model pre-trained with a larger output embedding size is competitive with the comparison method on average despite having 77M fewer parameters during fine-tuning.⁴

Reducing the input embedding dimension saves a significant number of parameters at a noticeably smaller cost to accuracy than reducing the output embedding size. In light of this, the parameter allocation of multilingual models (see Table 1) seems particularly inefficient. For a multilingual model with coupled embeddings, reducing the input embedding dimension to save parameters as proposed by Lan et al. (2020) is very detrimental to performance (see Appendix A.5 for details).

The results in this section indicate that the output embedding plays an important role in the transferability of pre-trained representations. For multilingual models in particular, a small input embedding dimension frees up a significant number of parameters at a small cost to performance. In the next section, we study how to improve the performance of a model by resizing embeddings and layers.

5 EMBEDDING AND LAYER RESIZING FOR MORE EFFICIENT FINE-TUNING

Increasing the output embedding size In §4, we observed that reducing E_{out} hurts performance on the fine-tuning tasks, suggesting E_{out} is important for transferability. Motivated by this result, we study the opposite scenario, i.e., whether increasing E_{out} beyond H improves the performance. We experiment with an output embedding size E_{out} in the range $\{128, 768, 3072\}$ while keeping the input embedding size $E_{in} = 128$ and all other parts of the model the same as described in §3 ($H = 768, 12$ layers, etc).

We show the results in Table 4. In all of the tasks we consider, increasing E_{out} monotonically improves the performance. The improvement is particularly impressive for the more complex question answering datasets. It is important to note that during fine-tuning, all three models have *the exact same sizes* for E_{in} and H . The only difference among them is the output embedding, which is discarded after pre-training. These results show that the effect of additional capacity during pre-training persists through the fine-tuning stage even if the added capacity is discarded after pre-training. We perform an extensive analysis on this behavior in §6. We show results with an English BERT_{Base} model in Appendix A.6, which show the same trend.

³We linearly project the embeddings from E_{in} to H and from H to E_{out} .

⁴We observe the same trend if we control for the number of *trainable parameters* during fine-tuning by freezing the input embedding parameters.

Table 4: Effect of an increased output embedding size E_{out} on tasks in XTREME. All three models have $E_{\text{in}} = 128$ and 12 Transformer layers with $H = 768$.

	# PT params	# FT params	XNLI Acc	NER F1	PAWS-X Acc	XQuAD EM/F1	MLQA EM/F1	TyDi-GoldP EM/F1	Avg
$E_{\text{out}} = 128$	115M	100M	68.1	65.2	83.3	38.6/54.8	30.9/45.2	32.2/44.2	56.6
$E_{\text{out}} = 768$	192M	100M	70.4	67.6	84.9	43.9/60.0	34.6/49.5	37.8/51.0	60.2
$E_{\text{out}} = 3072$	469M	100M	71.1	68.1	85.1	45.3/63.3	37.2/53.1	39.4/54.7	61.8

Table 5: Effect of additional capacity via more Transformer layers during pre-training. Both models have $E_{\text{in}} = 128$. The $E_{\text{out}} = 768$ model has a larger output embedding size E_{out} and 12 Transformer layers. In contrast, the model with 11 additional Transformer layers has $E_{\text{out}} = 128$. Those additional layers are dropped after pre-training, leaving 12 layers for fair comparison during fine-tuning.

	# PT params	# FT params	XNLI Acc	NER F1	PAWS-X Acc	XQuAD EM/F1	MLQA EM/F1	TyDi-GoldP EM/F1	Avg
$E_{\text{out}} = 768$	192M	100M	70.4	67.6	84.9	43.9/60.0	34.6/49.5	37.8/51.0	60.2
11 add. layers	193M	100M	71.2	67.3	85.0	38.8/55.5	31.4/46.6	31.3/45.5	58.0

Adding capacity via layers We investigate alternative ways of adding capacity during pre-training such as increasing the number of layers and discarding them after pre-training. For a fair comparison with the $E_{\text{out}} = 768$ model, we add 11 additional layers (total of 23) and drop the 11 upper layers after pre-training. This setting ensures that both models have the same pre-training and fine-tuning parameters. We show the results in Table 5. The model with additional layers performs poorly on the question answering tasks, likely because the top layers contain useful semantic information (Tenney et al., 2019). In addition to higher performance, increasing E_{out} relies only a more expensive dense matrix multiplication, which is highly optimized on typical accelerators and can be scaled up more easily with model parallelism (Shazeer et al., 2018) because of small additional communication cost. We thus focus on increasing E_{out} to expand pre-training capacity and leave an exploration of alternative strategies to future work.

Reinvesting input embedding parameters Reducing E_{in} from 768 to 128 reduces the number of parameters from 177M to 100M. We redistribute these 77M parameters for the model with $E_{\text{out}} = 768$ to add capacity where it might be more useful by increasing the width or depth of the model. Specifically, we 1) increase the hidden dimension H of the Transformer layers from 768 to 1024⁵ and 2) increase the number of Transformer layers (L) from 12 to 23 at the same H to obtain models with similar number of parameters during fine-tuning.

Table 6 shows the results for these two strategies. Reinvesting the input embedding parameters in both H and L improves performance on all tasks while increasing the number of Transformer layers L results in the best performance, with an average improvement of 3.9 over the baseline model with coupled embeddings and the same number of fine-tuning parameters overall.

A rebalanced mBERT We finally combine and scale up our techniques to design a rebalanced mBERT model that outperforms the current state-of-the-art unsupervised model, XLM-R (Conneau et al., 2020a). As the performance of Transformer-based models strongly depends on their number of parameters (Raffel et al., 2020), we propose a Rebalanced mBERT (RemBERT) model that matches XLM-R’s number of fine-tuning parameters (559M) while using a reduced embedding size, resized layers, and more effective capacity during pre-training. The model has a vocabulary size of 250k, $E_{\text{in}} = 256$, $E_{\text{out}} = 1536$, and 32 layers with 1152 dimensions and 18 attention heads per layer and was trained on data covering 110 languages. We provide further details in Appendix A.7.

We compare RemBERT to XLM-R and the best-performing models on the XTREME leaderboard in Table 7 (see Appendix A.8 for the per-task results).⁶ The models in the first three rows use

⁵We choose 1024 dimensions to optimize efficient use of our accelerators.

⁶We do not consider retrieval tasks as they require intermediate task data (Phang et al., 2020).

Table 6: Effect of reinvesting the input embedding parameters to increase the hidden dimension H and number of Transformer layers L on XTREME tasks. $E_{in} = 128, E_{out} = 768, H = 768$ for all models except for the baseline, which has coupled embeddings and $E_{in} = E_{out} = 768$.

	# PT params	# FT params	XNLI Acc	NER F1	PAWS-X Acc	XQuAD EM/F1	MLQA EM/F1	TyDi-GoldP EM/F1	Avg
Baseline	177M	177M	70.7	69.2	85.3	46.2/63.2	37.3/53.1	40.7/56.7	62.3
$E_{in} = 128, E_{out} = 768$	192M	100M	70.4	67.6	84.9	43.9/60.0	34.6/49.5	37.8/51.0	60.2
Reinvested in H	260M	168M	72.8	69.2	85.6	50.2/67.2	40.7/56.4	44.8/60.0	64.5
Reinvested in L	270M	178M	73.6	71.0	86.7	51.7/68.8	42.4/58.2	48.2/62.9	66.2

Table 7: Comparison of our model to other models on the XTREME leaderboard. Details about VECO are due to communication with the authors.

	# PT params	# FT params	Langs	Add. task data	Trans- lation data	Sentence-pair Classification Acc	Structured Prediction F1	Question Answering EM/F1	Avg
<i>Models fine-tuned on translations or additional task data</i>									
STiLTs (Phang et al., 2020)	559M	559M	100	✓		83.9	69.4	67.2	73.5
FILTER (Fang et al., 2020)	559M	559M	100		✓	87.5	71.9	68.5	76.0
VECO (Luo et al., 2020)	662M	662M	50		✓	87.0	70.4	68.0	75.1
<i>Models fine-tuned only on English task data</i>									
XLM-R (Conneau et al., 2020a)	559M	559M	100			82.8	69.0	62.3	71.4
RemBERT (ours)	995M	575M	110			84.2	73.3	68.6	75.4

additional task or translation data for fine-tuning, which significantly boosts performance (Hu et al., 2020). XLM-R and RemBERT are the only two models that are fine-tuned using only the English training data of the corresponding task. XLM-R was trained with a batch size of 2^{13} sequences each with 2^9 tokens and 1.5M steps (total of 6.3T tokens). In comparison, RemBERT is trained with 2^{11} sequences of 2^9 tokens for 1.76M steps (1.8T tokens). Even though it was trained with $3.5\times$ fewer tokens and has 10 more languages competing for the model capacity, RemBERT outperforms XLM-R on all tasks we considered. This strong result suggests that our proposed methods are also effective at scale. We will release the pre-trained model checkpoint and the source code for RemBERT in order to promote reproducibility and share the pre-training cost with other researchers.

6 ON THE IMPORTANCE OF THE OUTPUT EMBEDDING SIZE

We carefully design a set of experiments to analyze the impact of an increased output embedding size on various parts of the model. We study the nature of the decoupled input and output representations (§6.1) and the transferability of the Transformer layers with regard to task-specific (§6.2) and language-specific knowledge (§6.3).

6.1 NATURE OF INPUT AND OUTPUT EMBEDDING REPRESENTATIONS

We first investigate to what extent the representations of decoupled input and output embeddings differ based on word embedding association tests (Caliskan et al., 2017). Similar to Press & Wolf (2017), for a given pair of words, we evaluate the correlation between human similarity judgements of the strength of the relationship and the dot product of the word embeddings. We evaluate on MEN (Bruni et al., 2014), MTurk771 (Halawi et al., 2012), Rare-Word (Luong et al., 2013), SimLex999 (Hill et al., 2015), and Verb-143 (Baker et al., 2014). As our model uses subwords, we average the token representations for words with multiple subwords.

We show the results in Table 8. In the first two rows, we can observe that the input embedding of the decoupled model performs similarly to the embeddings of the coupled model while the output

Table 8: Results on word embedding association tests for the input (I) and output (O) embeddings of models (left) and the models’ masked language modeling performance (right). The first two rows show the performance of coupled and decoupled embeddings with the same embedding size $E_{in} = E_{out} = 768$. The last three rows show the performance as we increase the output embedding size with $E_{in} = 128$.

	MEN		MTurk771		Rare-Word		Simlex999		Verb-143		MLM acc.	
	I	O	I	O	I	O	I	O	I	O		
Coupled	40.8		37.5		25.0		20.1		56.0		Coupled	61.1
Decoupled	39.2	27.7	37.5	24.3	24.0	12.2	17.6	16.1	59.4	43.9	Decoupled	61.6
$E_{out} = 128$	40.7	36.6	37.7	32.8	23.6	16.4	17.5	17.3	48.9	46.4	$E_{out} = 128$	59.0
$E_{out} = 768$	38.6	27.8	35.2	23.9	22.6	11.5	19.7	15.6	50.6	45.5	$E_{out} = 768$	60.7
$E_{out} = 3072$	40.1	10.8	36.2	8.8	22.6	-1.2	18.9	13.0	43.3	19.5	$E_{out} = 3072$	62.3

embeddings have lower scores.⁷ We note that higher scores are not necessarily desirable as they only measure how well the embedding captures semantic similarity at the lexical level. Focusing on the *difference* in scores, we can observe that the input embedding learns representations that capture semantic similarity in contrast to the decoupled output embedding. At the same time, the decoupled model achieves higher performance in masked language modeling.

The last three rows of Table 8 show that as E_{out} increases, the difference in the input and output embedding increases as well. With additional capacity, the output embedding progressively learns representations that differ more significantly from the input embedding. We also observe that the MLM accuracy increases with E_{out} . Collectively, the results in Table 8 suggest that with increased capacity, the output embeddings learn representations that are worse at capturing traditional semantic similarity (which is purely restricted to the lexical level) while being more specialized to the MLM task (which requires more contextual representations). Decoupling embeddings thus give the model the flexibility to avoid encoding relationships in its output embeddings that may not be useful for its pre-training task. As pre-training performance correlates well with downstream performance (Devlin et al., 2019), forcing output embeddings to encode lexical information can hurt the latter.

6.2 CROSS-TASK TRANSFERABILITY OF TRANSFORMER LAYER REPRESENTATIONS

We investigate to what extent more capacity in the output embeddings during pre-training reduces the MLM-specific burden on the Transformer layers and hence prevents them from over-specializing to the MLM task.

Dropping the last few layers We first study the impact of an increased output embedding size on the transferability of the last few layers. Previous work (Zhang et al., 2020; Tamkin et al., 2020) randomly reinitialized the last few layers to investigate their transferability. However, those parameters are still present during fine-tuning. We propose a more aggressive pruning scheme where we completely remove the last few layers. This setting demonstrates more drastically whether a model’s upper layers are over-specialized to the pre-training task by assessing whether performance can be improved with millions fewer parameters.⁸

We show the performance of models with 8–12 remaining layers (removing up to 4 of the last layers) for different output embedding sizes E_{out} on XNLI in Figure 1. For both $E_{out} = 128$ and $E_{out} = 768$, removing the last layer improves performance. In other words, the model performs better even with 7.1M fewer parameters. With $E_{out} = 128$, the performance remains similar when removing the last few layers, which suggests that the last few layers are not critical for transferability.

As we increase E_{out} , the last layers become more transferable. With $E_{out} = 768$, removing more than one layer results in a sharp reduction in performance. Finally when $E_{out} = 3072$, every layer is

⁷This is opposite from what Press & Wolf (2017) observed in 2-layer LSTMs. They find that performance of the output embedding is similar to the embedding of a coupled model. This difference is plausible as the information encoded in large Transformers changes significantly throughout the model (Tenney et al., 2019).

⁸Each Transformer layer with $H = 768$ has about 7.1M parameters.

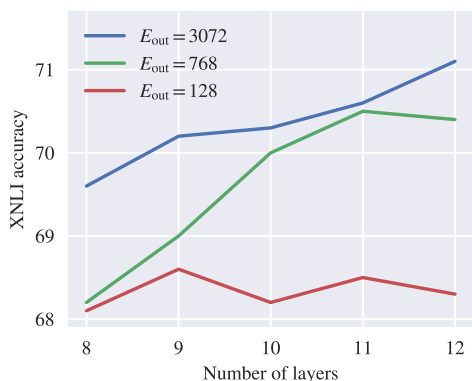


Figure 1: XNLI accuracy with the last layers removed. Larger E_{out} improves transferability.

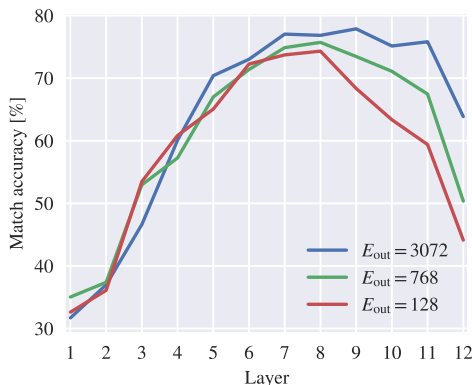


Figure 2: Nearest-neighbor English-to-German translation accuracy of each layer.

Table 9: Probing analysis of Tenney et al. (2019) with `mix` strategy.

	# PT params	# FT params	POS	Const.	Dep.	Entities	SRL	Coref. O	Coref. W	SPR1	SPR2	Rel.	Avg
$E_{\text{out}} = 128$	115M	100M	96.7	87.9	94.3	93.7	91.7	95.0	67.2	83.0	82.7	77.0	86.9
$E_{\text{out}} = 768$	192M	100M	96.7	87.9	94.4	94.0	91.8	95.0	67.0	83.1	82.8	78.6	87.1
$E_{\text{out}} = 3072$	469M	100M	96.8	88.0	94.5	94.2	92.0	95.3	67.6	84.1	82.6	78.9	87.4

useful and removing any layer worsens the performance. This analysis demonstrates that increasing E_{out} improves the transferability of the representations learned by the last few Transformer layers.

Probing analysis We further study whether an increased output embedding size improves the general natural language processing ability of the Transformer. We employ the probing analysis of Tenney et al. (2019) and the `mix` probing strategy where a 2-layer dense network is trained on top of a weighted combination of the 12 Transformer layers. We evaluate performance with regard to core NLP concepts including part-of-speech tagging (POS), constituents (Consts.), dependencies (Dep.), entities, semantic role labeling (SRL), coreference (Coref.), semantic proto-roles (SPR), and relations (Rel.). For a thorough description of the task setup, see Tenney et al. (2019).⁹

We show the results of the probing analysis in Table 9. As we increase E_{out} , the model improves across all tasks, even though the number of parameters is the same. This demonstrates that increasing E_{out} enables the Transformer layers to learn more general representations.¹⁰

6.3 CROSS-LINGUAL TRANSFERABILITY OF TRANSFORMER LAYER REPRESENTATIONS

So far, our analyses were not specialized to multilingual models. Unlike monolingual models, multilingual models have another dimension of transferability: cross-lingual transfer, the ability to transfer knowledge from one language to another.

Previous work (Pires et al., 2019; Artetxe et al., 2020) has found that MLM on multilingual data encourages cross-lingual alignment of representations without explicit cross-lingual supervision. While it has been shown that multilingual models learn useful cross-lingual representations, over-specialization to the pre-training task may result in higher layers being less cross-lingual and focusing on language-specific phenomena necessary for predicting the next word in a given language. To investigate to what extent this is the case and whether increasing E_{out} improves cross-lingual alignment, we evaluate the model’s nearest neighbour translation accuracy (Pires et al., 2019) on English-to-German translation (see Appendix A.9 for a description of the method).

⁹The probing tasks are in English while our encoder is multilingual.

¹⁰In Tenney et al. (2019), going from a BERT-base to a BERT-large model (with $3\times$ more parameters) improves performance on average by 1.1 points, compared to our improvement of 0.5 points without increasing the number of fine-tuning parameters.

We show the nearest neighbor translation accuracy for each layer in Figure 2. As E_{out} increases, we observe that a) the Transformer layers become more language-agnostic as evidenced by higher accuracy and b) the language-agnostic representation is maintained to a higher layer as indicated by a flatter slope from layer 7 to 11. In all cases, the last layer is less language-agnostic than the previous one. The sharp drop in performance after layer 8 at $E_{\text{out}} = 128$ is in line with previous results on cross-lingual retrieval (Pires et al., 2019; Hu et al., 2020) and is partially mitigated by an increased E_{out} . In sum, not only does a larger output embedding size improve cross-task transferability but it also helps with cross-lingual alignment and thereby cross-lingual transfer on downstream tasks.

7 CONCLUSION

We have assessed the impact of embedding coupling in pre-trained language models. We have identified the main benefit of decoupled embeddings to be the flexibility endowed by decoupling their shapes. We showed that input embeddings can be safely reduced and that larger output embeddings and reinvesting saved parameters lead to performance improvements. Our rebalanced multilingual BERT (RemBERT) outperforms XLM-R with the same number of fine-tuning parameters while having been trained on $3.5\times$ fewer tokens. Overall, we found that larger output embeddings lead to more transferable and more general representations, particularly in a Transformer’s upper layers.

ACKNOWLEDGEMENTS

We would like to thank Laura Rimell for valuable feedback on a draft of this paper.

REFERENCES

- Roei Aharoni, Melvin Johnson, and Orhan Firat. Massively Multilingual Neural Machine Translation. In *Proceedings of NAACL 2019*, 2019.
- Asaf Amrami and Yoav Goldberg. Towards better substitution-based word sense induction. *arXiv preprint arXiv:1905.12598*, 2019.
- Mikel Artetxe and Holger Schwenk. Massively Multilingual Sentence Embeddings for Zero-Shot Cross-Lingual Transfer and Beyond. *Transactions of the ACL 2019*, 2019.
- Mikel Artetxe, Sebastian Ruder, and Dani Yogatama. On the Cross-lingual Transferability of Monolingual Representations. In *Proceedings of ACL 2020*, 2020.
- Simon Baker, Roi Reichart, and Anna Korhonen. An unsupervised model for instance level subcategorization acquisition. In *Proceedings of the 2014 Conference on Empirical Methods in Natural Language Processing (EMNLP)*, pp. 278–289, 2014.
- Ondřej Bojar, Yvette Graham, Amir Kamran, and Miloš Stanojević. Results of the wmt16 metrics shared task. In *Proceedings of the First Conference on Machine Translation: Volume 2, Shared Task Papers*, pp. 199–231, 2016.
- Tom B. Brown, Benjamin Mann, Nick Ryder, Melanie Subbiah, Jared Kaplan, Prafulla Dhariwal, Arvind Neelakantan, Pranav Shyam, Girish Sastry, Amanda Askell, Sandhini Agarwal, Ariel Herbert-Voss, Gretchen Krueger, Tom Henighan, Rewon Child, Aditya Ramesh, Daniel M. Ziegler, Jeffrey Wu, Clemens Winter, Christopher Hesse, Mark Chen, Eric Sigler, Mateusz Litwin, Scott Gray, Benjamin Chess, Jack Clark, Christopher Berner, Sam McCandlish, Alec Radford, Ilya Sutskever, and Dario Amodei. Language Models are Few-Shot Learners. *arXiv e-prints*, art. arXiv:2005.14165, May 2020.
- Elia Bruni, Nam-Khanh Tran, and Marco Baroni. Multimodal distributional semantics. *Journal of Artificial Intelligence Research*, 49:1–47, 2014.
- Aylin Caliskan, Joanna J Bryson, and Arvind Narayanan. Semantics derived automatically from language corpora contain human-like biases. *Science*, 356(6334):183–186, 2017.

- Jonathan H. Clark, Eunsol Choi, Michael Collins, Dan Garrette, Tom Kwiatkowski, Vitaly Nikolaev, and Jennimaria Palomaki. TyDi QA: A Benchmark for Information-Seeking Question Answering in Typologically Diverse Languages. In *Transactions of the Association of Computational Linguistics*, 2020a.
- Kevin Clark, Minh-Thang Luong, Quoc V. Le, and Christopher D. Manning. ELECTRA: Pre-training Text Encoders as Discriminators Rather Than Generators. In *Proceedings of ICLR 2020*, 2020b.
- Alexis Conneau, Ruty Rinott, Guillaume Lample, Adina Williams, Samuel Bowman, Holger Schwenk, and Veselin Stoyanov. XNLI: Evaluating cross-lingual sentence representations. In *Proceedings of EMNLP 2018*, pp. 2475–2485, 2018.
- Alexis Conneau, Kartikay Khandelwal, Naman Goyal, Vishrav Chaudhary, Guillaume Wenzek, Francisco Guzmán, Edouard Grave, Myle Ott, Luke Zettlemoyer, and Veselin Stoyanov. Un-supervised cross-lingual representation learning at scale. In *Proceedings of the 58th Annual Meeting of the Association for Computational Linguistics*, pp. 8440–8451, Online, July 2020a. Association for Computational Linguistics. doi: 10.18653/v1/2020.acl-main.747. URL <https://www.aclweb.org/anthology/2020.acl-main.747>.
- Alexis Conneau, Shijie Wu, Haoran Li, Luke Zettlemoyer, and Veselin Stoyanov. Emerging cross-lingual structure in pretrained language models. In *Proceedings of the 58th Annual Meeting of the Association for Computational Linguistics*, pp. 6022–6034, Online, July 2020b. Association for Computational Linguistics. doi: 10.18653/v1/2020.acl-main.536. URL <https://www.aclweb.org/anthology/2020.acl-main.536>.
- Jacob Devlin, Ming-Wei Chang, Kenton Lee, and Kristina Toutanova. BERT: Pre-training of deep bidirectional transformers for language understanding. In *Proceedings of the 2019 Conference of the North American Chapter of the Association for Computational Linguistics: Human Language Technologies, Volume 1 (Long and Short Papers)*, pp. 4171–4186, Minneapolis, Minnesota, June 2019. Association for Computational Linguistics. doi: 10.18653/v1/N19-1423. URL <https://www.aclweb.org/anthology/N19-1423>.
- Yanai Elazar and Yoav Goldberg. oLMpics - On what Language Model Pre-training Captures. *arXiv preprint arXiv:1912.13283*, 2019.
- Yuwei Fang, Shuohang Wang, Zhe Gan, Siqi Sun, and Jingjing Liu. FILTER: An Enhanced Fusion Method for Cross-lingual Language Understanding. *arXiv preprint arXiv:2009.05166*, 2020.
- Orhan Firat, Baskaran Sankaran, Yaser Al-onaizan, Fatos T. Yarman Vural, and Kyunghyun Cho. Zero-Resource Translation with Multi-Lingual Neural Machine Translation. In *Proceedings of EMNLP 2016*, pp. 268–277, 2016.
- Suchin Gururangan, Ana Marasović, Swabha Swayamdipta, Kyle Lo, Iz Beltagy, Doug Downey, and Noah A. Smith. Don’t Stop Pretraining: Adapt Language Models to Domains and Tasks. In *Proceedings of ACL 2020*, 2020.
- Guy Halawi, Gideon Dror, Evgeniy Gabrilovich, and Yehuda Koren. Large-scale learning of word relatedness with constraints. In *Proceedings of the 18th ACM SIGKDD international conference on Knowledge discovery and data mining*, pp. 1406–1414, 2012.
- Felix Hill, Roi Reichart, and Anna Korhonen. Simlex-999: Evaluating semantic models with (genuine) similarity estimation. *Computational Linguistics*, 41(4):665–695, 2015.
- Geoffrey Hinton, Oriol Vinyals, and Jeff Dean. Distilling the Knowledge in a Neural Network. *arXiv preprint arXiv:1503.02531*, 2015.
- Jeremy Howard and Sebastian Ruder. Universal Language Model Fine-tuning for Text Classification. In *Proceedings of ACL 2018*, 2018.
- Junjie Hu, Sebastian Ruder, Aditya Siddhant, Graham Neubig, Orhan Firat, and Melvin Johnson. XTREME: A Massively Multilingual Multi-task Benchmark for Evaluating Cross-lingual Generalization. In *Proceedings of the 37th International Conference on Machine Learning (ICML)*, 2020.

- Hakan Inan, Khashayar Khosravi, and Richard Socher. Tying Word Vectors and Word Classifiers: A Loss Framework for Language Modeling. In *Proceedings of ICLR 2017*, 2017.
- Melvin Johnson, Mike Schuster, Quoc V Le, Maxim Krikun, Yonghui Wu, Zhifeng Chen, Nikhil Thorat, Fernanda Viégas, Martin Wattenberg, Greg Corrado, Macduff Hughes, and Jeffrey Dean. Google’s Multilingual Neural Machine Translation System: Enabling Zero-Shot Translation. *Transactions of the ACL 2017*, 2017.
- Karthikeyan K, Zihan Wang, Stephen Mayhew, and Dan Roth. Cross-lingual ability of multilingual bert: An empirical study. In *International Conference on Learning Representations*, 2020. URL <https://openreview.net/forum?id=HJeT3yrtDr>.
- Jared Kaplan, Sam McCandlish, Tom Henighan, Tom B. Brown, Benjamin Chess, Rewon Child, Scott Gray, Alec Radford, Jeffrey Wu, and Dario Amodei. Scaling Laws for Neural Language Models. *arXiv e-prints*, art. arXiv:2001.08361, January 2020.
- Taku Kudo and John Richardson. SentencePiece: A simple and language independent sub-word tokenizer and detokenizer for neural text processing. In *Proceedings of the 2018 Conference on Empirical Methods in Natural Language Processing: System Demonstrations*, pp. 66–71, Brussels, Belgium, November 2018. Association for Computational Linguistics. doi: 10.18653/v1/D18-2012. URL <https://www.aclweb.org/anthology/D18-2012>.
- Zhenzhong Lan, Mingda Chen, Sebastian Goodman, Kevin Gimpel, Piyush Sharma, and Radu Soricut. ALBERT: A Lite BERT for Self-supervised Learning of Language Representations. In *International Conference on Learning Representations*, 2020. URL <https://openreview.net/forum?id=H1eA7AetvS>.
- Dmitry Lepikhin, Hyoungho Lee, Yuanzhong Xu, Dehao Chen, Orhan Firat, Yanping Huang, Maxim Krikun, Noam Shazeer, and Zhifeng Chen. GShard: Scaling Giant Models with Conditional Computation and Automatic Sharding. *arXiv e-prints*, art. arXiv:2006.16668, June 2020.
- Patrick Lewis, Barlas Oğuz, Ruty Rinott, Sebastian Riedel, and Holger Schwenk. MLQA: Evaluating Cross-lingual Extractive Question Answering. In *Proceedings of ACL 2020*, 2020.
- Nelson F. Liu, Matt Gardner, Yonatan Belinkov, Matthew E. Peters, and Noah A. Smith. Linguistic Knowledge and Transferability of Contextual Representations. In *Proceedings of NAACL 2019*, 2019a.
- Yinhan Liu, Myle Ott, Naman Goyal, Jingfei Du, Mandar Joshi, Danqi Chen, Omer Levy, Mike Lewis, Luke Zettlemoyer, and Veselin Stoyanov. RoBERTa: A Robustly Optimized BERT Pre-training Approach. *arXiv preprint arXiv:1907.11692*, 2019b.
- Fuli Luo, Wei Wang, Jiahao Liu, Yijia Liu, Bin Bi, Songfang Huang, Fei Huang, and Luo Si. VECO: Variable Encoder-decoder Pre-training for Cross-lingual Understanding and Generation. *arXiv e-prints*, art. arXiv:2010.16046, October 2020.
- Minh-Thang Luong, Richard Socher, and Christopher D Manning. Better word representations with recursive neural networks for morphology. In *Proceedings of the Seventeenth Conference on Computational Natural Language Learning*, pp. 104–113, 2013.
- Gábor Melis, Tomáš Kočiský, and Phil Blunsom. Mogrifier LSTM. In *Proceedings of ICLR 2020*, 2020.
- Paul Michel, Omer Levy, and Graham Neubig. Are Sixteen Heads Really Better than One? In *Proceedings of NeurIPS 2019*, 2019.
- Subhabrata Mukherjee and Ahmed Hassan Awadallah. XtremeDistil : Multi-stage Distillation for Massive Multilingual Models. In *Proceedings of ACL 2020*, pp. 2221–2234, 2020.
- Joakim Nivre, Mitchell Abrams, Željko Agić, Lars Ahrenberg, Lene Antonsen, Maria Jesus Aranzabe, Gashaw Arutie, Masayuki Asahara, Luma Ateyah, Mohammed Attia, et al. Universal dependencies 2.2. 2018.

- Xiaoman Pan, Boliang Zhang, Jonathan May, Joel Nothman, Kevin Knight, and Heng Ji. Cross-lingual name tagging and linking for 282 languages. In *Proceedings of ACL 2017*, pp. 1946–1958, 2017.
- Jonas Pfeiffer, Ivan Vuli, Iryna Gurevych, and Sebastian Ruder. MAD-X: An Adapter-based Framework for Multi-task Cross-lingual Transfer. In *Proceedings of EMNLP 2020*, 2020.
- Jason Phang, Phu Mon Htut, Yada Pruksachatkun, Haokun Liu, Clara Vania, Katharina Kann, Iacer Calixto, and Samuel R Bowman. English intermediate-task training improves zero-shot cross-lingual transfer too. *arXiv preprint arXiv:2005.13013*, 2020.
- Telmo Pires, Eva Schlinger, and Dan Garrette. How multilingual is multilingual BERT? In *Proceedings of the 57th Annual Meeting of the Association for Computational Linguistics*, pp. 4996–5001, Florence, Italy, July 2019. Association for Computational Linguistics. doi: 10.18653/v1/P19-1493. URL <https://www.aclweb.org/anthology/P19-1493>.
- Ofir Press and Lior Wolf. Using the output embedding to improve language models. In *Proceedings of the 15th Conference of the European Chapter of the Association for Computational Linguistics: Volume 2, Short Papers*, pp. 157–163, Valencia, Spain, April 2017. Association for Computational Linguistics. URL <https://www.aclweb.org/anthology/E17-2025>.
- Colin Raffel, Noam Shazeer, Adam Roberts, Katherine Lee, Sharan Narang, Michael Matena, Yanqi Zhou, Wei Li, and Peter J. Liu. Exploring the limits of transfer learning with a unified text-to-text transformer. *Journal of Machine Learning Research*, 21(140):1–67, 2020. URL <http://jmlr.org/papers/v21/20-074.html>.
- Pranav Rajpurkar, Jian Zhang, Konstantin Lopyrev, and Percy Liang. SQuAD: 100,000+ Questions for Machine Comprehension of Text. In *Proceedings of EMNLP 2016*, 2016.
- Sebastian Ruder, Matthew E Peters, Swabha Swayamdipta, and Thomas Wolf. Transfer learning in natural language processing. In *Proceedings of the 2019 Conference of the North American Chapter of the Association for Computational Linguistics: Tutorials*, pp. 15–18, 2019.
- Victor Sanh, Lysandre Debut, Julien Chaumond, and Thomas Wolf. DistilBERT, a distilled version of BERT: smaller, faster, cheaper and lighter. *arXiv preprint arXiv:1910.01108*, 2019.
- Roy Schwartz, Jesse Dodge, Noah A. Smith, and Oren Etzioni. Green AI. *arXiv preprint arXiv:1907.10597*, 2019.
- Noam Shazeer, Youlong Cheng, Niki Parmar, Dustin Tran, Ashish Vaswani, Penporn Koanantakool, Peter Hawkins, Hyoungho Lee, Mingsheng Hong, Cliff Young, Ryan Sepassi, and Blake Hechtman. Mesh-tensorflow: Deep learning for supercomputers. In S. Bengio, H. Wallach, H. Larochelle, K. Grauman, N. Cesa-Bianchi, and R. Garnett (eds.), *Advances in Neural Information Processing Systems 31*, pp. 10414–10423. Curran Associates, Inc., 2018. URL <http://papers.nips.cc/paper/8242-mesh-tensorflow-deep-learning-for-supercomputers.pdf>.
- Mohammad Shoeybi, Mostofa Patwary, Raul Puri, Patrick LeGresley, Jared Casper, and Bryan Catanzaro. Megatron-LM: Training Multi-Billion Parameter Language Models Using Model Parallelism. *arXiv e-prints*, art. arXiv:1909.08053, September 2019.
- Zhiqing Sun, Hongkun Yu, Xiaodan Song, Renjie Liu, Yiming Yang, and Denny Zhou. MobileBERT : a Compact Task-Agnostic BERT for Resource-Limited Devices. In *Proceedings of ACL 2020*, pp. 2158–2170, 2020.
- Alex Tamkin, Trisha Singh, Davide Giovanardi, and Noah Goodman. Investigating Transferability in Pretrained Language Models. *arXiv e-prints*, art. arXiv:2004.14975, April 2020.
- Ian Tenney, Dipanjan Das, and Ellie Pavlick. BERT rediscovers the classical NLP pipeline. In *Proceedings of the 57th Annual Meeting of the Association for Computational Linguistics*, pp. 4593–4601, Florence, Italy, July 2019. Association for Computational Linguistics. doi: 10.18653/v1/P19-1452. URL <https://www.aclweb.org/anthology/P19-1452>.

- Iulia Turc, Ming-Wei Chang, Kenton Lee, and Kristina Toutanova. Well-Read Students Learn Better: On the Importance of Pre-training Compact Models. *arXiv preprint arXiv:1908.08962*, 2019.
- Ashish Vaswani, Noam Shazeer, Niki Parmar, Jakob Uszkoreit, Llion Jones, Aidan N Gomez, Łukasz Kaiser, and Illia Polosukhin. Attention is all you need. In I. Guyon, U. V. Luxburg, S. Bengio, H. Wallach, R. Fergus, S. Vishwanathan, and R. Garnett (eds.), *Advances in Neural Information Processing Systems 30*, pp. 5998–6008. Curran Associates, Inc., 2017. URL <http://papers.nips.cc/paper/7181-attention-is-all-you-need.pdf>.
- Elena Voita, David Talbot, Fedor Moiseev, Rico Sennrich, and Ivan Titov. Analyzing Multi-Head Self-Attention: Specialized Heads Do the Heavy Lifting, the Rest Can Be Pruned. In *Proceedings of ACL 2019*, 2019.
- Adina Williams, Nikita Nangia, and Samuel R. Bowman. A Broad-Coverage Challenge Corpus for Sentence Understanding through Inference. In *Proceedings of NAACL-HLT 2018*, 2018.
- Thomas Wolf, Lysandre Debut, Victor Sanh, Julien Chaumond, Clement Delangue, Anthony Moi, Pierric Cistac, Tim Rault, Rémi Louf, Morgan Funtowicz, and Jamie Brew. HuggingFace’s Transformers: State-of-the-art Natural Language Processing. *arXiv preprint arXiv:1910.03771*, 2019.
- Shijie Wu and Mark Dredze. Beto, bentz, becas: The surprising cross-lingual effectiveness of BERT. In *Proceedings of the 2019 Conference on Empirical Methods in Natural Language Processing and the 9th International Joint Conference on Natural Language Processing (EMNLP-IJCNLP)*, pp. 833–844, Hong Kong, China, November 2019. Association for Computational Linguistics. doi: 10.18653/v1/D19-1077. URL <https://www.aclweb.org/anthology/D19-1077>.
- Yinfei Yang, Yuan Zhang, Chris Tar, and Jason Baldridge. PAWS-X: A cross-lingual adversarial dataset for paraphrase identification. In *Proceedings of EMNLP 2019*, pp. 3685–3690, 2019.
- Jason Yosinski, Jeff Clune, Yoshua Bengio, and Hod Lipson. How transferable are features in deep neural networks? In *Advances in neural information processing systems*, pp. 3320–3328, 2014.
- Tianyi Zhang, Felix Wu, Arzoo Katiyar, Kilian Q. Weinberger, and Yoav Artzi. Revisiting Few-sample BERT Fine-tuning. *arXiv e-prints*, art. arXiv:2006.05987, June 2020.
- Xiyou Zhou, Zhiyu Chen, Xiaoyong Jin, and William Yang Wang. HULK: An Energy Efficiency Benchmark Platform for Responsible Natural Language Processing. *arXiv preprint arXiv:2002.05829*, 2020.
- Pierre Zweigenbaum, Serge Sharoff, and Reinhard Rapp. Overview of the third bucc shared task: Spotting parallel sentences in comparable corpora. In *Proceedings of 11th Workshop on Building and Using Comparable Corpora*, pp. 39–42, 2018.

A APPENDIX

A.1 EFFICIENCY COMPARISON BASED ON PARAMETER COUNT DURING FINE-TUNING

We compare the efficiency of models based on their number of parameters. We believe this to be a reasonable proxy for a model’s efficiency as the performance of Transformer-based language models has been shown to improve monotonically with the number of parameters (Kaplan et al., 2020; Raffel et al., 2020; Lepikhin et al., 2020; Brown et al., 2020; Shueybi et al., 2019; Aharoni et al., 2019). As the number of parameters during pre-training and fine-tuning may differ¹¹, we compare models based on their number of parameters during the fine-tuning stage (without the task-specific head). We argue that this is the most practically relevant number as a model is generally pre-trained only once but may be fine-tuned or used for inference millions of times.

¹¹For encoder-only models such as BERT, parameters after the last Transformer layer (e.g. the output embeddings and the pooling layer) are discarded after pre-training.

Table 10: Fine-tuning hyperparameters for all models except RemBERT.

	Learning rate	Batch size	Train epochs
PAWS-X	$[3 \times 10^{-5}, 4 \times 10^{-5}, 5 \times 10^{-5}]$	32	3
XNLI	$[1 \times 10^{-5}, 2 \times 10^{-5}, 3 \times 10^{-5}]$	32	3
SQuAD	$[2 \times 10^{-5}, 3 \times 10^{-5}, 4 \times 10^{-5}]$	32	3
NER	$[1 \times 10^{-5}, 2 \times 10^{-5}, 3 \times 10^{-5}, 4 \times 10^{-5}, 5 \times 10^{-5}]$	32	3

Table 11: Statistics for the datasets in XTREME, including the number of training, development, and test examples as well as the number of languages for each task.

Task	Corpus	Train	Dev	Test	Lang.	Task	Metric	Domain
Classification	XNLI	392,702	2,490	5,010	15	NLI	Acc.	Misc.
	PAWS-X	49,401	2,000	2,000	7	Paraphrase	Acc.	Wiki / Quora
Structured prediction	POS	21,253	3,974	47-20,436	33	POS	F1	Misc.
	NER	20,000	10,000	1,000-10,000	40	NER	F1	Wikipedia
QA	XQuAD	87,599	34,726	1,190	11	Span extraction	F1 / EM	Wikipedia
	MLQA	-	-	4,517-11,590	7	Span extraction	F1 / EM	Wikipedia
	TyDiQA-GoldP	3,696	634	323-2,719	9	Span extraction	F1 / EM	Wikipedia
Retrieval	BUCC	-	-	1,896-14,330	5	Retrieval	F1	Wiki / news
	Tatoeba	-	-	1,000	33	Retrieval	Acc.	misc.

A.2 BASELINE MODEL DETAILS

Our baseline model has the same architecture as multilingual BERT (mBERT; Devlin et al., 2019). It consists of 12 Transformer layers with a hidden size H of 768 and 12 attention heads with 64 dimensions each. Input and output embeddings are coupled and have the same dimensionality E as the hidden size, i.e. $E_{\text{out}} = E_{\text{in}} = H$. The total number of parameters during pre-training and fine-tuning is 177M. We do not use dropout following the recommendation from Lan et al. (2020). We use the SentencePiece tokenizer (Kudo & Richardson, 2018) and a shared vocabulary of 120k subwords. The model is trained on Wikipedia dumps in 104 languages following Devlin et al. (2019) using masked language modeling (MLM). We choose this baseline as its behavior has been thoroughly studied (K et al., 2020; Conneau et al., 2020b; Pires et al., 2019; Wu & Dredze, 2019).

A.3 TRAINING DETAILS

For all pre-training except for the large scale RemBERT, we trained using 64 Google Cloud TPUs. We trained over 26B tokens of Wikipedia data. All fine-tuning experiments were run on 8 Cloud TPUs. For all fine-tuning experiments other than RemBERT, we use batch size of 32. We sweep over the learning rate values specified in Table 10.

We used the SentencePiece tokenizer trained with unigram language modeling

A.4 XTREME TASKS

For our experiments, we employ tasks from the XTREME benchmark (Hu et al., 2020). We show statistics for them in Table 11. XTREME includes the following datasets: The Cross-lingual Natural Language Inference (XNLI; Conneau et al., 2018) corpus, the Cross-lingual Paraphrase Adversaries from Word Scrambling (PAWS-X; Yang et al., 2019) dataset, part-of-speech (POS) tagging data from the Universal Dependencies v2.5 (Nivre et al., 2018) treebanks, the Wikiann (Pan et al., 2017) dataset for named entity recognition (NER), the Cross-lingual Question Answering Dataset (XQuAD; Artetxe et al., 2020), the Multilingual Question Answering (MLQA; Lewis et al., 2020) dataset, the gold passage version of the Typologically Diverse Question Answering (TyDiQA; Clark et al., 2020a) dataset, data from the third shared task of the workshop on Building and Using Parallel Corpora (BUCC; Zweigenbaum et al., 2018), and the Tatoeba dataset (Artetxe & Schwenk, 2019). We refer the reader to Hu et al. (2020) for more details. We average results across three fine-tuning runs and evaluate on the dev sets unless otherwise stated.

Table 12: Effect of reducing the embedding size E for monolingual vs. multilingual models on MNLi and XNLI performance respectively. Monolingual numbers are from Lan et al. (2020) and have vocabulary size of 30k.

English	# PT params	# FT params	MNLi	Multilingual	# PT params	# FT params	XNLI
$E = H = 768$	110M	110M	84.5	$E = H = 768$	177M	177M	70.7
$E = H = 128$	89M	89M	83.7	$E = H = 128$	100M	100M	68.1

Table 13: Effect of an increased output embedding size E_{out} and additional layers during pre-training $L = 15$ on English BERT_{Base} ($E_{\text{in}} = 128$).

	# PT params	# FT params	MNLi Acc	SQuAD EM/F1
BERT _{Base} (ours)	110M	110M	79.8	78.4/86.2
$E_{\text{out}} = 128$	93M	89M	75.9	75.5/84.2
$E_{\text{out}} = 768$	112M	89M	77.5	77.5/85.5
$E_{\text{out}} = 3072$	181M	89M	79.5	78.4/86.2
$L = 15$	114M	89M	80.1	78.7/86.3
$L = 24$	178M	89M	79.0	77.8/85.5

A.5 COMPARISON TO LAN ET AL. (2020)

Crucially, our finding differs from the dimensionality reduction in ALBERT (Lan et al., 2020). While they show that smaller embeddings can be used, their input and output embeddings are coupled and use a much smaller vocabulary (30k vs 120k). In contrast, we find that simultaneously decreasing both the input and output embedding size drastically reduces the performance of multilingual models.

In Table 12, we show the impact of their factorized embedding parameterization on a monolingual and a multilingual model. While the English model suffers a smaller (0.8%) drop in accuracy, the multilingual model’s performance drops by 2.6%. Direct application of a factorized embedding parameterization (Lan et al., 2020) is thus not viable for multilingual models.

A.6 ENGLISH MONOLINGUAL RESULTS

So far, we have focused on multilingual models as the number of saved parameters when reducing the input embedding size is largest for them. We now apply the same techniques to the English 12-layer BERT_{Base} with a 30k vocabulary (Devlin et al., 2019). Specifically, we decouple the embeddings, reduce E_{in} to 128, and increase the output embedding size or the number of layers during pre-training. We show the performance on MNLi (Williams et al., 2018) and SQuAD (Rajpurkar et al., 2016) in Table 13. By adding more capacity during pre-training, performance monotonically increases similar to the multilingual models. Interestingly, pruning a 24-layer model to 12 layers reduces performance, presumably because some upper layers still contain useful information.

A.7 REMBERT DETAILS

We design a Rebalanced mBERT (RemBERT) to leverage capacity more effectively during pre-training. The model has 995M parameters during pre-training and 575M parameters during fine-tuning. We pre-train on large unlabeled text using both Wikipedia and Common Crawl data, covering 110 languages. The details of hyperparameters and architecture are shown in Table 14.

For each language l , we define the empirical distribution as

$$p_l = \frac{n_l}{\sum_{l' \in L} n_{l'}} \quad (1)$$

Table 14: Hyperparameters for RemBERT architecture and pre-training.

Hyperparameter	RemBERT
Number of layers	32
Hidden size	1152
Vocabulary size	250,000
Input embedding dimension	256
Output embedding dimension	1536
Number of attention heads	18
Attention head dimension	64
Dropout	0
Learning rate	0.0002
Batch size	2048
Train steps	1.76M
Adam β_1	0.9
Adam β_2	0.999
Adam ϵ	10^{-6}
Weight decay	0.01
Gradient clipping norm	1
Warmup steps	15000

Table 15: Hyperparameters for RemBERT fine-tuning.

	Learning rate	Batch size	Train epochs
PAWS-X	8×10^{-6}	128	3
XNLI	1×10^{-5}	128	3
SQuAD	9×10^{-6}	128	3
POS	3×10^{-5}	128	3
NER	8×10^{-6}	64	3

where n_l is the number of sentences in l 's pre-training corpus. Following Devlin et al. (2019), we use an exponentially smoothed distribution, i.e., we exponentiaate p_l by $\alpha = 0.5$ and renormalize to obtain the sampling distribution.

Hyperparameters and pre-training details are summarized in Table 14. Hyperparameters used for the leaderboard submission are shown in Table 15.

A.8 XTREME TASK RESULTS

We show the detailed results for RemBERT and the comparison per task on the XTREME leaderboard in Table 16. Compared to Table 7, which shows the average across task categories, this table shows the average across tasks.

A.9 NEAREST-NEIGHBOR TRANSLATION COMPUTATION

For an English-to-German translation, we sample $M = 5000$ pairs of sentences from WMT16 (Bojar et al., 2016). For each sentence in each language, we obtain a representation $v_{\text{LANG}}^{(l)}$ at each layer l by averaging the activations of all tokens (except the [CLS] and [SEP] tokens) at that layer. We then compute a translation vector from English to German by averaging the difference between the vectors of each sentence pair across all pairs: $\bar{v}_{\text{EN} \rightarrow \text{DE}}^{(l)} = \frac{1}{M} \sum_{i=1}^M (v_{\text{DE}_i}^{(l)} - v_{\text{EN}_i}^{(l)})$.

For each English sentence $v_{\text{EN}_i}^{(l)}$, we can now translate it with this vector: $v_{\text{EN}_i}^{(l)} + \bar{v}_{\text{EN} \rightarrow \text{DE}}^{(l)}$. We locate the closest German sentence vector based on ℓ_2 distance and measure how often the nearest neighbour is the correct pair.

Table 16: Comparison of our model to other models on the XTREME leaderboard. Details about VECO are due to communication with the authors. Avg_{task} is averaged over tasks whereas Avg is averaged over task categories just like Table 7.

	# PT params	# FT params	XNLI Acc	POS F1	NER F1	PAWS-X Acc	XQuAD EM/F1	MLQA EM/F1	TyDi-GoldP EM/F1	Avg_{task}	Avg
<i>Models fine-tuned on translations or additional task data</i>											
STILTs (Phang et al., 2020)	559M	559M	80.0	74.9	64.0	87.9	63.3/78.7	53.7/72.4	59.5/76.0	72.7	73.5
FILTER (Fang et al., 2020)	559M	559M	83.9	76.2	67.7	91.4	68.0/82.4	57.7/76.2	50.9/68.3	74.9	76.0
VECO (Luo et al., 2020)	662M	662M	83.0	75.1	65.7	91.1	66.3/79.9	54.9/73.1	58.9/75.0	74.1	75.1
<i>Models fine-tuned only on English task data</i>											
XLM-R (Conneau et al., 2020a)	559M	559M	79.2	73.8	65.4	86.4	60.8/76.6	53.2/71.6	45.0/65.1	70.1	71.4
RemBERT (ours)	995M	575M	80.8	76.5	70.1	87.5	64.0/79.6	55.0/73.1	63.0/77.0	74.4	75.4