

WEIGHT EXPANSION: A NEW PERSPECTIVE ON DROPOUT AND GENERALIZATION

Anonymous authors

Paper under double-blind review

ABSTRACT

While dropout is known to be a successful regularization technique, insights into the mechanisms that lead to this success are still lacking. We introduce the concept of *weight expansion*, an increase in the signed volume of a parallelotope spanned by the column or row vectors of the weight covariance matrix, and show that weight expansion is an effective means of increasing the generalization in a PAC-Bayesian setting. We provide a theoretical argument that dropout leads to weight expansion and extensive empirical support for the correlation between dropout and weight expansion. To support our hypothesis that weight expansion can be regarded as an *indicator* of the enhanced generalization capability endowed by dropout, and not just as a mere by-product, we have studied other methods that achieve weight expansion (resp. contraction), and found that they generally lead to an increased (resp. decreased) generalization ability. This suggests that dropout is an attractive regularizer, because it is a computationally cheap method for obtaining weight expansion. This insight justifies the role of dropout as a regularizer, while paving the way for identifying regularizers that promise improved generalization through weight expansion.

1 INTRODUCTION

Research on why dropout is so effective in improving the generalization ability of neural networks has been intensive. Many intriguing phenomena induced by dropout have also been studied in this research (Gao et al., 2019; Lengerich et al., 2020; Wei et al., 2020). In particular, it has been suggested that dropout optimizes the training process (Baldi & Sadowski, 2013; Wager et al., 2013; Helmbold & Long, 2015; Kingma et al., 2015; Gal & Ghahramani, 2016; Helmbold & Long, 2017; Nalisnick et al., 2019) and that dropout regularizes the inductive bias (Cavazza et al., 2018; Mianjy et al., 2018; Mianjy & Arora, 2019; 2020).

A fundamental understanding of just how dropout achieves its success as a regularization technique will not only allow us to understand when (and why) to apply dropout, but also enable the design of new training methods. In this paper, we suggest a new measure, *weight expansion*, which both furthers our understanding and allows the development of new regularizers.

Broadly speaking, the application of dropout leads to non-trivial changes in the weight covariance matrix. As the weight covariance matrix is massively parameterized and hard to comprehend, we abstract it to the signed volume of a parallelotope spanned by the vectors of the matrix—*weight volume* (normalized generalized variance (Kocherlakota & Kocherlakota, 2004)) for short. Dropout increases this weight volume. Figure 1 illustrates the weight expansion obtained by dropout and visualizes how it improves the generalization ability.

This leads to our **hypotheses** that **(1) weight expansion reduces the generalization error** of neural networks (Section 3.1), and that **(2) dropout leads to weight expansion** (Section 3.2). We hypothesize that weight expansion can be an indicator of the increased generalization ability and dropout is ‘merely’ an efficient way to achieve it.

The weight volume is defined as the **normalized determinant of the weight covariance matrix (determinant of weight correlation matrix)**, which is the second-order statistics of weight vectors when treated as a multivariate random variable. For example, when the weight vector is an isotropic Gaussian, the weight volume is large and the network generalizes well. Likewise, if the weights

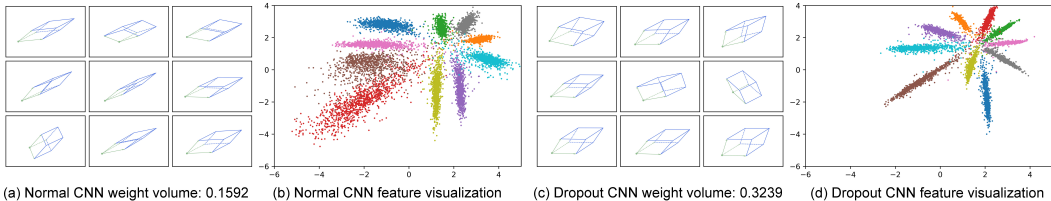


Figure 1: Visualization of weight volume and features of the last layer in a CNN on MNIST, with and without dropout during training. Plots (b) and (d) present feature visualization for normal and dropout CNN, respectively. We can see that the dropout network has clearer separation between points of different classes – a clear sign of a better generalization ability. As we will argue in this paper, this better generalization is related to the “weight expansion” phenomenon, as exhibited in plots (a) and (c). For (a) and (c), the weight volume of the normal CNN and the dropout CNN is 0.1592 and 0.3239, respectively. That is, *the application of dropout during training “expands” the weight volume*. For visualization purpose, we randomly select three dimensions in the weight covariance matrix and display their associated 3-dimensional parallelotope. Both (a) and (c) contains $3 \times 3 = 9$ such parallelotopes. We can see that those parallelotopes have a visibly larger volume in the dropout network. Details of the networks are provided in Appendix A.

are highly correlated, then the weight volume is small and the network does not generalize well. Technically, as a determinant, the weight volume serves as a measure of the orthogonality of the rows/columns of the weight covariance matrix. The more orthogonal the rows/columns are, the larger is the weight volume—which makes the different classes more distinguishable. Figure 1 visualizes that, with increasing weight volume, the decision boundaries of different classes become clearer. Note that, *this is different from the “weight orthogonality”* proposed in Saxe et al. (2013); Mishkin & Matas (2015); Bansal et al. (2018): Weight volume is a statistical property of weight matrices treated as random variables, while orthogonality treats weight matrices as deterministic variables (more discussions are provided in Appendix B).

In addition to our theoretical arguments that weight expansion promotes generalization and dropout leads to weight expansion (Section 3), our empirical results also support our hypotheses. To mitigate estimation errors, we consider two independent weight volume estimation methods in Section 4, *i.e.*, sampling method and Laplace approximation. Section 5.1 demonstrates that the two methods lead to consistent results, which show that using dropout brings about weight expansion (**coherence to hypothesis (2)**) and generalization-improvement (**coherence to hypothesis (1)**) across data sets and networks.

Then, we embed the weight volume (a measurable quantity) to a new complexity measure that is based on our adaptation of the PAC-Bayesian bound (Section 3.1). Our experiments in Section 5.2, conducted on 3×288 network configurations, show that, comparing to existing complexity measures which do not consider weight volume, the new complexity measure is most closely correlated with generalization (**coherence to hypothesis (1)**) and dropout (**coherence to hypothesis (2)**) for these dropout networks with different dropout rates.

Finally, we use disentanglement noises (Section 4.1) to achieve weight expansion and further to improve generalization (or other noises to achieve contraction and further to destroy generalization, Section 5.3). This in particular supports **hypothesis (1)** and indicates that weight expansion is a key indicator for a reduced generalization error, while dropout is a computationally inexpensive means to achieve it. (Disentanglement noises, *e.g.*, are more expensive.)

2 PRELIMINARIES

Notation. Let S be a training set with m samples drawn from the input distribution D , and $s \in S$ a single sample. Loss, expected loss, and empirical loss are defined as $\ell(f_W(s))$, $\mathcal{L}_D(f_W) = \mathbb{E}_{s \sim D}[\ell(f_W(s))]$, and $\mathcal{L}_S(f_W) = \frac{1}{m} \sum_{s \in S} \ell(f_W(s))$, respectively, where $f_W(\cdot)$ is a learning model. Note that, in the above notation, we omit the label y of the sample s , as it is clear from the context. Let W , W_l , and w_{ij} be the model weight matrix, the weight matrix of l -th layer, and the element of the i -th row and the j -th column in W , respectively. Note that we omit bias for convenience. To make a clear distinction, let \mathbf{W} be the multivariate random variable of $\text{vec}(W)$ (vectorization of W), and \mathbf{w}_{ij} be the random variable of w_{ij} . W^0 and W^F denote the weight matrix before and after training, respectively. Further, we use W^* to represent the maximum-a-posteriori

(MAP) estimate of W . Note that W^F can be seen as an approximation of W^* after training. We consider a feedforward neural network $f_W(\cdot)$ that takes a sample $s_0 \in S$ as input and produces an output h_L , after L fully connected layers. At the l -th layer ($l = 1, \dots, L$), the latent representation before and after the activation function is denoted as $h_l = W_l a_{l-1}$ and $a_l = \text{act}_l(h_l)$, respectively, where $\text{act}(\cdot)$ is the activation function.

Node Dropout. We focus on node dropout (Hinton et al., 2012; Srivastava et al., 2014), a popular version of dropout that randomly sets the output of a given activation layer to 0. We adopt a formal definition of node dropout from Wei et al. (2020), which is more general than the usual Bernoulli formalism. For the layer l with the output of the activation function $a_l \in \mathbb{R}^{N_l}$ and a given probability $q_l \in [0, 1)$, we sample a scaling vector $\eta_l^{\text{do}} \in \mathbb{R}^{N_l}$ (do is short for dropout) with independently and identically distributed elements

$$(\eta_l^{\text{do}})_i = \begin{cases} -1 & \text{with probability } q_l, \\ \frac{q_l}{1-q_l} & \text{with probability } 1 - q_l. \end{cases} \quad (1)$$

for $i = 1, \dots, N_l$, where N_l is the number of neurons at the layer l . With a slight abuse of notation, we denote by η_l^{do} a vector of independently distributed random variables, each of which has a zero mean, and also a vector with each element being either -1 or $\frac{q_l}{1-q_l}$ when referring to a specific realization. As such, applying node dropout, we compute the updated output after the activation as $a_l^{\text{do}} = (\mathbf{1} + \eta_l^{\text{do}}) \odot a_l$. That is, with probability q_l , an element of the output with node dropout a_l^{do} is reset to 0, and with probability $1 - q_l$ it is rescaled with a factor $\frac{1}{1-q_l}$. The index of the layer l will be omitted when it is clear from the context. With different realizations of η^{do} , a number of subnetworks with different connectivity will be produced during training.

3 DROPOUT AND WEIGHT EXPANSION

In this section, we first formally define the weight volume, which has been informally introduced in Figure 1. We aim to answer the following two questions: **1. Why does large weight volume promote generalization?** **2. Why does dropout expand the weight volume?**

Definition 3.1 (Weight Volume) Let $\Sigma_l = \mathbb{E}[(\mathbf{W}_l - \mathbb{E}(\mathbf{W}_l))(\mathbf{W}_l - \mathbb{E}(\mathbf{W}_l))^\top]$ be the weight covariance matrix in a neural network. The weight volume (also called as normalized generalized variance or determinant of weight correlation matrix) is defined as

$$\text{vol}(\mathbf{W}_l) \triangleq \frac{\det(\Sigma_l)}{\prod_i [\Sigma_l]_{ii}} \in [0, 1], \quad (2)$$

where the denominator is the product of the diagonal elements in Σ_l .

Intuitively, the weight volume comes from the geometric interpretation of the determinant of the matrix $\det(\Sigma_l)$, with normalization over the diagonal elements of the matrix. Because Σ_l is a covariance matrix and thus positive semi-definite, we have $\text{vol}(\mathbf{W}_l) \in [0, 1]$ since $0 \leq \det(\Sigma_l) \leq \prod_i [\Sigma_l]_{ii}$. We note that $\text{vol}(\mathbf{W}_l) = 0$ implies that the the weight covariance matrix does not have full rank, suggesting that some weights are completely determined by the others, while $\text{vol}(\mathbf{W}_l) = 1$ suggests that the weights \mathbf{W}_l are uncorrelated. The larger $\text{vol}(\mathbf{W}_l)$ is, the more dispersed are the weights.

Before presenting empirical results, we first provide theoretical support for our first hypothesis by adapting the PAC-Bayesian theorem (McAllester, 1999; Dziugaite & Roy, 2017) (Section 3.1): We show that a larger weight volume leads to a tighter bound for the generalization error. In Section 3.2, we argue that dropout can expand weight volume through the theoretical derivation.

3.1 WHY DOES LARGE WEIGHT VOLUME PROMOTE GENERALIZATION?

First, we support **hypothesis (1)** on the relevance of weight expansion through an extension of the PAC-Bayesian theorem, and then verify it empirically in Section 5. The PAC-Bayesian framework, developed in McAllester (1999); Neyshabur et al. (2017); Dziugaite & Roy (2017), connects weights with generalization by establishing an upper bound on the generalization error with respect to the Kullback-Leibler divergence (D_{KL}) between the posterior distribution Q and the prior distribution P of the weights. In the following, we extend this framework to work with $\text{vol}(\mathbf{W}_l)$.

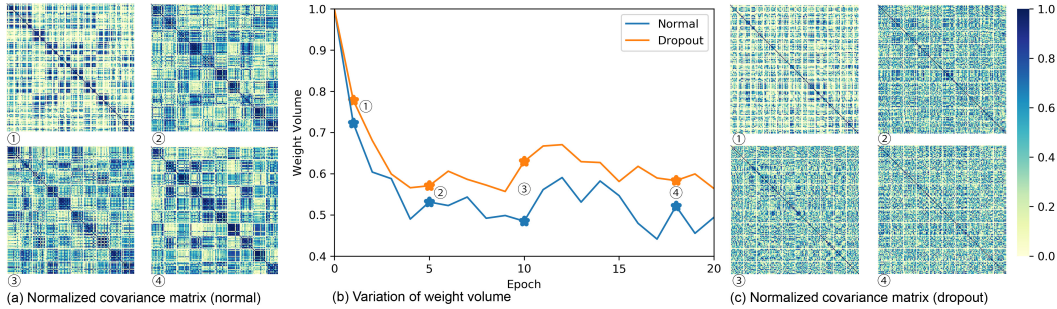


Figure 2: We train two small NNs (64-32-16-10 network with/without dropout) on MNIST. **(b)** shows the changes in weight volume along with epochs. There are four sampling points (①②③④) to track the **absolute** normalized covariance matrix (correlation matrix) of normal gradient updates **(a)** and dropout gradient updates **(c)**. The results for VGG16 on CIFAR-10 are provided in [Appendix C](#).

Let P be a prior and Q be a posterior over the weight space. For any $\delta > 0$, with probability $1 - \delta$ over the draw of the input space, we have ([McAllester, 1999](#); [Dziugaite & Roy, 2017](#))

$$\mathbb{E}_{\mathbf{w} \sim Q}[\mathcal{L}_D(f\mathbf{w})] \leq \mathbb{E}_{\mathbf{w} \sim Q}[\mathcal{L}_S(f\mathbf{w})] + \sqrt{\frac{D_{\text{KL}}(Q||P) + \ln \frac{m}{\delta}}{2(m-1)}}. \quad (3)$$

Given a learning setting, [Dziugaite & Roy \(2017\)](#); [Neyshabur et al. \(2017\)](#); [Jiang et al. \(2020b\)](#) assume $P = \mathcal{N}(\mu_P, \Sigma_P)$ and $Q = \mathcal{N}(\mu_Q, \Sigma_Q)$. Thus, $D_{\text{KL}}(Q||P)$ can be simplified to

$$D_{\text{KL}}(Q||P) = \frac{1}{2} \left(\text{tr}(\Sigma_P^{-1}\Sigma_Q) - k + (\mu_P - \mu_Q)^\top (\Sigma_P)^{-1} (\mu_P - \mu_Q) + \ln \frac{\det(\Sigma_P)}{\det(\Sigma_Q)} \right), \quad (4)$$

where k is the dimension of \mathbf{W} , tr denotes the trace, and \det denotes the determinant. The derivation is given in [Appendix D](#). To simplify the analysis, [Neyshabur et al. \(2017; 2018a\)](#) instantiate the prior P to be a $\text{vec}(W^0)$ (or $\mathbf{0}$) mean and σ^2 variance Gaussian distribution, and assume that the posterior Q to also be a $\text{vec}(W^F)$ mean spherical Gaussian with variance σ^2 in each direction.

We *relax their assumption* by letting Q be a non-spherical Gaussian (the off-diagonal correlations for same layer are not 0, whereas those for different layers are 0), while retaining the assumption on the σ^2 variation in every direction (but allowing arbitrary covariance between them). This retains both $\text{tr}(\Sigma_P^{-1}\Sigma_Q) = k$ and $\prod_i [\Sigma_{l,P}]_{ii} = \prod_i [\Sigma_{l,Q}]_{ii}$ for all l , which provides the following.

$$\begin{aligned} D_{\text{KL}}(Q||P) &= \frac{1}{2} \sum_l \left(\frac{\|W_l^F - W_l^0\|_F^2}{\sigma_l^2} + \ln \frac{\prod_i [\Sigma_{l,P}]_{ii}}{\det(\Sigma_{l,Q})} \right) \\ &= \frac{1}{2} \sum_l \left(\frac{\|W_l^F - W_l^0\|_F^2}{\sigma_l^2} + \ln \frac{1}{\text{vol}(\mathbf{W}_l)} \right). \end{aligned} \quad (5)$$

Details of the derivation are provided in [Appendix D](#). From [Equations \(3\) and \(5\)](#), we notice that the PAC-Bayesian upper bound of the generalization error becomes smaller when $\text{vol}(\mathbf{W}_l)$ increases, which is also demonstrated by wide experiments in [Section 5](#).

3.2 WHY DOES DROPOUT EXPAND THE WEIGHT VOLUME?

In the above PAC-Bayesian framework, we assume the (non-spherical) Gaussian distributed weights and connect weight volume with generalization. In this subsection, to connect weight volume with dropout through correlation (of gradient updates and weights), and further to support **hypothesis (2)**, we consider **the arbitrarily distributed** (with finite variance) gradient updates of l -th layer, Δ_l for a normal network and Δ_l^{do} for the corresponding dropout network (all learning settings are same except for dropout). That is, $\text{vec}(\Delta_l) \sim \mathcal{M}_\Delta(\mu_{\Delta_l}, \Sigma_{\Delta_l})$, and dropout noise η_l^{do} is applied on gradient updates through

$$\text{vec}(\Delta_l^{\text{do}}) = (\mathbf{1} + \mathbf{1} \otimes \eta_l^{\text{do}}) \odot \text{vec}(\Delta_l^{\text{do}'}),$$

where the random vector $(\mathbf{1} + \mathbf{1} \otimes \eta_l^{\text{do}}) \in \mathbb{R}^{N_l-1N_l}$ with \otimes being Kronecker product. As we aim to study the impact of η_l^{do} on the correlation of gradient updates, we assume that $\text{vec}(\Delta_l^{\text{do}'})$ also obeys the distribution $\mathcal{M}_\Delta(\mu_{\Delta_l}, \Sigma_{\Delta_l})$ (for simplifying correlation analysis). Thus, with a slight abuse of notation, denote $(\mathbf{1} + \mathbf{1} \otimes \eta_l^{\text{do}}) \odot \text{vec}(\Delta_l^{\text{do}'})$ as η_l^{do} to be applied on gradient updates of corresponding neurons for notational convenience. Then, we can now obtain [Lemma 3.1](#).

Lemma 3.1 (Dropout reduces correlation of gradient updates.) *Let Δ_{ij} and $\Delta_{i'j'}$ be the gradient updates for \mathbf{w}_{ij} and $\mathbf{w}_{i'j'}$ of some layer in a normal network, where $i \neq i'$. Then the (absolute) correlation between Δ_{ij}^{do} and $\Delta_{i'j'}^{\text{do}}$ in a dropout network can be upper bounded by that in the normally trained network with the same setting, i.e.,*

$$|\rho_{\Delta_{ij}^{\text{do}}, \Delta_{i'j'}^{\text{do}}}| \leq (1-q)|\rho_{\Delta_{ij}, \Delta_{i'j'}}|. \quad (6)$$

Details of the proof are given in [Appendix E](#). The equality holds if, and only if, $q = 0$ or $\rho_{\Delta_{ij}, \Delta_{i'j'}} = 0$. [Lemma 3.1](#) shows that the dropout noise decreases correlation among gradient updates, which is also shown by experiments in [Figure 2](#) and [Appendix C](#). That is, the correlation among gradient updates in a normal network ([Figure 2a](#)) is obviously larger than the correlation in a dropout network ([Figure 2c](#)). Next, [Lemma 3.1](#) leads to the following lemma.

Lemma 3.2 (Dropout reduces correlation of updated weights.) *The (absolute) correlation of updated weights in a dropout network is upper bounded by that in the normal network. That is,*

$$\begin{aligned} |\rho_{\mathbf{w}_{ij} + \Delta_{ij}^{\text{do}}, \mathbf{w}_{i'j'} + \Delta_{i'j'}^{\text{do}}}| &\leq \frac{|\text{Cov}(\mathbf{w}_{ij} + \Delta_{ij}, \mathbf{w}_{i'j'} + \Delta_{i'j'})|}{\sqrt{\left(\text{Var}(\mathbf{w}_{ij} + \Delta_{ij}) + \frac{q\text{Var}(\Delta_{ij})}{1-q}\right)\left(\text{Var}(\mathbf{w}_{i'j'} + \Delta_{i'j'}) + \frac{q\text{Var}(\Delta_{i'j'})}{1-q}\right)}} \\ &\leq |\rho_{\mathbf{w}_{ij} + \Delta_{ij}, \mathbf{w}_{i'j'} + \Delta_{i'j'}}|. \end{aligned} \quad (7)$$

The equality holds if and only if $q = 0$ or $\text{Cov}(\mathbf{w}_{ij} + \Delta_{ij}, \mathbf{w}_{i'j'} + \Delta_{i'j'}) = 0$, and the full proof is given in [Appendix F](#). It is clear that weight volume (equals the determinant of weight correlation matrix) is one of measures of correlation among weights (refer to [Figure 1](#)), and small correlation can lead to large weight volume. We also provide more discussions about the relationship between correlation and weight volume in [Appendix G](#). Consistent with [Lemma 3.2](#), we show in addition, that gradient updates with large correlation ([Figure 2a](#)) can lead to a large correlation of weights—and thus to a small weight volume ([Figure 2b](#)), while gradient updates with small correlation ([Figure 2c](#), dropout) can lead to a small correlation of weights—and thus to a large weight volume.

4 WEIGHT VOLUME APPROXIMATION

To mitigate estimation errors, we use two methods to estimate the weight volume. One is the sampling method, and the other is Laplace approximation ([Botev et al., 2017](#); [Ritter et al., 2018](#)) of neural networks, which models dropout as a noise in the Hessian matrix. Laplace approximation enables us to generalize dropout to other disentanglement noises ([Section 4.1](#)). Note that some of other popular regularizers, e.g., weight decay and batch normalization, **improve generalization not through weight expansion** (more discussions are provided in [Appendix H](#)).

Sampling Method. First, we use a sharpness-like method ([Keskar et al., 2017](#); [Jiang et al., 2020b](#)) to get a set of weight samples drawn from $(W + \mathbf{U})$ such that $|\mathcal{L}(f_{W+\mathbf{U}}) - \mathcal{L}(f_W)| \leq \epsilon$, where $\text{vec}(\mathbf{U}) \sim \mathcal{N}(0, \sigma_{\mathbf{U}}^2 I)$ is a multivariate random variable obeys zero mean Gaussian with $\sigma_{\mathbf{U}} = 0.1$ (more details are given in [Appendix I](#)). The covariance between \mathbf{w}_{ij} and $\mathbf{w}_{i'j'}$ can then be computed by $\text{Cov}(\mathbf{w}_{ij}, \mathbf{w}_{i'j'}) = \mathbb{E}[(\mathbf{w}_{ij} - \mathbb{E}[\mathbf{w}_{ij}])(\mathbf{w}_{i'j'} - \mathbb{E}[\mathbf{w}_{i'j'}])]$. Finally, we can estimate $\text{vol}(\mathbf{W})$ according to [Equation \(2\)](#).

Laplace Approximation. Laplace approximation has been used in posterior estimation in Bayesian inference ([Bishop, 2006](#); [Ritter et al., 2018](#)). It aims to approximate the posterior distribution $p(\mathbf{W}|S)$ by a Gaussian distribution, based on the second-order Taylor approximation of the \ln posterior around its MAP estimate. Specifically, for layer l and given weights with an MAP estimate W_l^* on S , we have

$$\ln p(\mathbf{W}_l|S) \approx \ln p(\text{vec}(W_l^*)|S) - \frac{1}{2}(\mathbf{W}_l - \text{vec}(W_l^*))^\top \Sigma_l^{-1}(\mathbf{W}_l - \text{vec}(W_l^*)), \quad (8)$$

where $\Sigma_l^{-1} = \mathbb{E}_s[H_l]$ is the expectation of the Hessian matrix over input data sample s , such that the Hessian matrix H_l is given by $H_l = \frac{\partial^2 \ell(f_{\mathbf{W}}(s))}{\partial \text{vec}(W_l) \partial \text{vec}(W_l)}$.

It is worth noting that the gradient is zero around the MAP estimate W^* , so the first-order Taylor polynomial is inexistent. Taking a closer look at [Equation \(8\)](#), one can find that its right hand side is exactly the logarithm of the probability density function of a Gaussian distributed multivariate

random variable with mean $\text{vec}(W_l^*)$ and covariance Σ_l , i.e., $\mathbf{W}_l \sim \mathcal{N}(\text{vec}(W_l^*), \Sigma_l)$, where Σ_l can be viewed as the covariance matrix of \mathbf{W}_l .

Laplace approximation suggests that it is possible to estimate Σ_l through the inverse of the Hessian matrix, because $\Sigma_l^{-1} = \mathbb{E}_s[H_l]$. Recently, [Botev et al. \(2017\)](#); [Ritter et al. \(2018\)](#) have leveraged insights from second-order optimization for neural networks to construct a Kronecker factored Laplace approximation. Differently from the classical second-order methods ([Battiti, 1992](#); [Shepherd, 2012](#)), which suffer from high computational costs for deep neural networks, it takes advantage of the fact that Hessian matrices at the l -th layer can be Kronecker factored as explained in [Martens & Grosse \(2015\)](#); [Botev et al. \(2017\)](#). I.e.,

$$H_l = \underbrace{a_{l-1}a_{l-1}^\top}_{\mathcal{A}_{l-1}} \otimes \underbrace{\frac{\partial^2 \ell(f_W(s))}{\partial h_l \partial h_l}}_{\mathcal{H}_l} = \mathcal{A}_{l-1} \otimes \mathcal{H}_l, \quad (9)$$

where $\mathcal{A}_{l-1} \in \mathbb{R}^{N_{l-1} \times N_{l-1}}$ indicates the subspace spanned by the post-activation of the previous layer, and $\mathcal{H}_{l,\text{do}} \in \mathbb{R}^{N_l \times N_l}$ is the Hessian matrix of the loss with respect to the pre-activation of the current layer, with N_{l-1} and N_l being the number of neurons at the $(l-1)$ -th and l -th layer, respectively. Further, through the derivation in [Appendix J](#), we can estimate $\text{vol}(\mathbf{W}_l)$ efficiently by having

$$\det(\Sigma_l) \approx \det((\mathbb{E}_s[\mathcal{A}_{l-1}])^{-1})^{N_l} \cdot \det((\mathbb{E}_s[\mathcal{H}_l])^{-1})^{N_{l-1}} \quad (10)$$

and

$$\prod_i [\Sigma_l]_{ii} \approx \left(\prod_c [(\mathbb{E}_s[\mathcal{A}_{l-1}])^{-1}]_{cc} \right)^{N_l} \cdot \left(\prod_d [(\mathbb{E}_s[\mathcal{H}_l])^{-1}]_{dd} \right)^{N_{l-1}}. \quad (11)$$

Note that, for the case with dropout, dropout noise η^{do} is taken into account to compute $\mathbb{E}_s[\mathcal{A}_{l-1}]$ and $\mathbb{E}_s[\mathcal{H}_l]$ ([Appendix K](#)). That is, $\mathbb{E}_s[\mathcal{A}_{l-1}^{\text{do}}] = \mathbb{E}_{s, \eta_i^{\text{do}}}[a_{l-1}^{\text{do}}(a_{l-1}^{\text{do}})^\top]$ and $\mathbb{E}_s[\mathcal{H}_l^{\text{do}}] = \mathbb{E}_{s, \eta_i^{\text{do}}}\left[\frac{\partial^2 \ell(f_W(s))}{\partial h_l^{\text{do}} \partial h_l^{\text{do}}}\right]$, where a_{l-1}^{do} and h_l^{do} are the activation and pre-activation of the corresponding layer in a dropout network.

4.1 OTHER DISENTANGLEMENT NOISE

Whilst introducing dropout noise can expand weight volume (as shown in the experiments of [Sections 5.1](#) and [5.2](#)), it is interesting to know (1) whether there are other noises that can lead to *weight expansion*, and, if so, whether they also lead to better generalization performance, and (2) whether there are noises that can lead to *weight contraction*, and, if so, whether those noises lead to worse generalization performance.

Algorithm 1 Gradient update with disentanglement noise.

- Input:** minibatch $\{s_i\}_{i=1}^n$, activation noise η_a , node loss noise η_h , noise strengths λ_1, λ_2 .
- ▶ Forward Propagation: apply noise $\lambda_1 \cdot \eta_a$ to activations.
 - ▶ Back Propagation: apply noise $\lambda_2 \cdot \eta_h$ to node loss.
 - ▶ Calculate $g = \frac{1}{n} \sum_{i=1}^n \nabla_W(\ell(f_W(s_i)))$ by considering both noises as indicated above.
 - ▶ Use g for the optimization algorithm.
-

As indicated in [Equation \(9\)](#) and [Appendix J](#), the weight covariance matrix can be approximated by the Kronecker product of $(\mathbb{E}[\mathcal{A}_{l-1}])^{-1}$ and $(\mathbb{E}[\mathcal{H}_l])^{-1}$. Disentanglement noises, as an attempt, can be injected into either term during the gradient update procedure to increase $\det(\mathbb{E}[\mathcal{A}_{l-1}])^{-1}$ and $\det(\mathbb{E}[\mathcal{H}_l])^{-1}$ for the purpose of weight expansion.

The first option is to inject η_a to activations during forward propagation, as follows.

Activation Reverse Noise η_a to increase $\det(\mathbb{E}[\mathcal{A}])^{-1}$. We define η_a as $\eta_a \sim \mathcal{N}(\mu, r(\Sigma_a))$, where $\Sigma_a = (\mathbb{E}[\mathcal{A}])^{-1}$ and $r(\Sigma)$ is to reverse the signs of off-diagonal elements of the matrix Σ .

The second option is to inject η_h into the node loss during backpropagation, as follows.

Node Loss Reverse Noise η_h to increase $\det(\mathbb{E}[\mathcal{H}])^{-1}$. We define η_h as $\eta_h \sim \mathcal{N}(\mu, r(\Sigma_h))$, where $\Sigma_h = (\mathbb{E}[\mathcal{H}])^{-1}$.

[Algorithm 1](#) presents our simple and effective way to obtain disentanglement noise, where λ_1 and λ_2 are hyper-parameters to balance the strengths of η_a and η_h . In the experiments in [Section 5.3](#), we will assign expansion noises and contraction noises according to their impact on the weight volume, where expansion noises are obtained from [Algorithm 1](#) and contraction noises are obtained from stochastic noises on weights.

Table 1: Weight volume on VGG networks (weight decay = 0).

	Method	VGG11	VGG11(dropout)	VGG16	VGG16(dropout)	VGG19	VGG19(dropout)
CIFAR-10	Sampling	0.06±0.02	0.13±0.02	0.05±0.02	0.12±0.02	0.04±0.02	0.12±0.02
	Laplace	0.0568	0.1523	0.0475	0.1397	0.0453	0.1443
	Generalization Gap	0.8030	0.5215	0.8698	0.2996	1.1087	0.1055
CIFAR-100	Sampling	0.07±0.02	0.14±0.02	0.06±0.02	0.14±0.02	0.04±0.02	0.12±0.02
	Laplace	0.0537	0.1578	0.0409	0.1620	0.0506	0.1409
	Generalization Gap	3.1208	2.1635	3.7541	1.2714	4.4787	0.4373

5 EXPERIMENTS

We have conducted a number of experiments to test our **hypotheses** that **(1) weight expansion helps reduce the generalization error** and **(2) dropout increases the weight volume**. More than 900 networks are trained. First, we confirm the role of weight expansion in connecting dropout and generalization by estimating the weight volume with two independent methods (Section 5.1). Second, we extend the PAC-Bayesian theorem with the awareness to weight volume, and show that the new complexity measure can significantly improve the prediction of the generalization error for dropout networks (Section 5.2). Finally, we consider other noises that can lead to either weight expansion or weight contraction, and study their respective impact on the generalization performance (Section 5.3). All empirical results are both significant and persistent across the models and data sets we work with, and support either hypothesis (1) or hypothesis (2) or both. In our experiments, we consider VGG-like models (Simonyan & Zisserman, 2014) and AlexNet-like models (Krizhevsky et al., 2012) for CIFAR-10, CIFAR-100 (Krizhevsky et al., 2009), ImageNet-32 (Deng et al., 2009), and SVHN (Netzer et al., 2011). For sampling method, we default to the settings of $\epsilon = 0.05$ for CIFAR-10/SVHN, and $\epsilon = 0.1$ for CIFAR-100/ImageNet-32.

5.1 MEASURING WEIGHT VOLUME

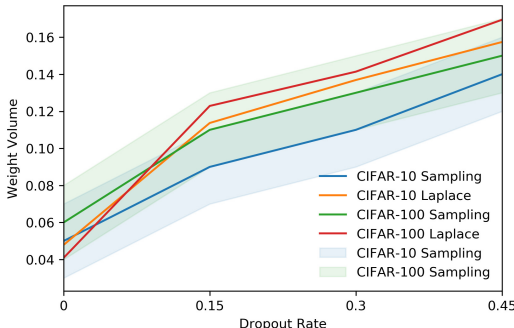


Figure 3: Weight volume w.r.t. dropout rate.

(hypothesis (2)). At the same time, the generalization error is reduced **(hypothesis (1))**. We default to the setting of weight decay with 0 in the experiments of Table 1, Figure 3, and also present similar results with weight decay 0.0005 (and more results on ImageNet-32) in Appendix L.

After confirming the qualitative correlation between weight volume and dropout, we consider the quantitative effect of the dropout rate on the weight volume. As Figure 3 shows, for the 4 VGG16 models with dropout rate 0.0, 0.15, 0.3, 0.45, respectively, we see a clear trend on CIFAR-10/100 that the weight volume increases with the dropout rate **(hypothesis (2))**. The generalization gap is also monotonically reduced (CIFAR-10: 0.86, 0.51, 0.30, 0.16; CIFAR-100: 3.75, 2.14, 1.07, 0.39) **(hypothesis (1))**.

In summary, these experiments provide evidence to the correlation between dropout, weight expansion, and generalization. This raises two follow-up questions: (1) can the weight volume serve as a proxy for the generalization gap? and (2) can techniques other than dropout exhibit a similar behavior? Answers to these questions can shed light on the nature of the correlation between these concepts.

5.2 PERFORMANCE OF THE NEW COMPLEXITY MEASURE

A complexity measure can predict generalization gap without resorting to a test set. Inspired by the experiments in Jiang et al. (2020b), we have trained $288 \times 3 = 864$ dropout networks (with dif-

Table 2: Mutual Information of complexity measures on CIFAR-10.

Complexity Measure	VGG				AlexNet			
	Dropout	$\mathbf{GG}(\omega =2)$	$\mathbf{GG}(\omega =1)$	$\mathbf{GG}(\omega =0)$	Dropout	$\mathbf{GG}(\omega =2)$	$\mathbf{GG}(\omega =1)$	$\mathbf{GG}(\omega =0)$
Frob Distance	0.0233	0.0243	0.0127	0.0039	0.0644	0.0289	0.0159	0.0094
Spectral Norm	0.0231	0.0274	0.0139	0.0001	0.1046	0.0837	0.0832	0.0786
Parameter Norm	0.0535	0.0252	0.0122	0.0008	0.0567	0.0814	0.0793	0.0744
Path Norm	0.0697	0.0129	0.0053	0.0027	0.1530	0.0425	0.0307	0.0177
Sharpness α'	0.1605	0.0127	0.0053	0.0001	0.1583	0.0877	0.0639	0.0418
PAC-Sharpness	0.0797	0.0200	0.0109	0.0023	0.1277	0.0552	0.0324	0.0097
PAC-S(Laplace)	0.5697	0.0837	0.0623	0.0446	0.7325	0.1248	0.1123	0.1052
PAC-S(Sampling)	0.6606	0.0857	0.0623	0.0433	0.5917	0.1014	0.0921	0.0847

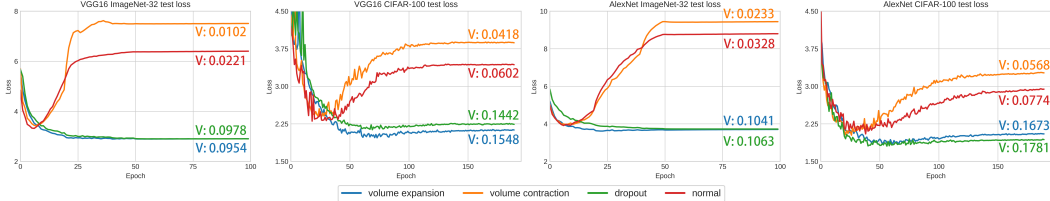


Figure 4: **Disentanglement noise vs. dropout.** We have trained 2 VGG16 networks (**Left**) and 2 AlexNet (**Right**) on ImageNet-32 and CIFAR-100 respectively, with normal training, dropout training, disentanglement noise training (volume expansion) and stochastic noise training (volume contraction). For each data set, we present their test losses in different plots. More experiments on the CIFAR-10, SVHN are given in [Appendix N](#).

ferent rates: 0, 0.15, 0.3) on CIFAR-10 for VGG-like and AlexNet-like structures and CIFAR-100 for VGG-like structures to compare our new complexity measure—which incorporates the weight volume—with a set of existing complexity measures, including PAC-Sharpness, which was shown in [Jiang et al. \(2020b\)](#) to perform better overall than many others. Following [Jiang et al. \(2020b\)](#); [Dziugaite et al. \(2020a\)](#), we use mutual information to measure the correlation between various complexity measures, and dropout and generalization gap (\mathbf{GG} , defined as test loss - training loss). The details of experimental settings (e.g., $\mathbf{GG}(|\omega|=2)$) and mutual information are given in [Appendix M.1](#).

We compare our new complexity measures ([Equation \(5\)](#), with Laplace approximation and sampling method respectively) with some existing ones, including Frobenius (Frob) Distance, Parameter Norm ([Dziugaite & Roy, 2017](#); [Neyshabur et al., 2018b](#); [Nagarajan & Kolter, 2019](#)), Spectral Norm ([Yoshida & Miyato, 2017](#)), Path Norm ([Neyshabur et al., 2015a;b](#)), Sharpness α' , and PAC-Sharpness ([Keskar et al., 2017](#); [Neyshabur et al., 2017](#); [Pitas et al., 2017](#)). Among them, PAC-Sharpness is suggested in [Jiang et al. \(2020b\)](#) as the the most promising one in their experiments.

[Table 2](#) presents the mutual information as described above on CIFAR-10 for VGG-like models and AlexNet-like models. Details of the above complexity measures are given in [Appendix M.2](#). More empirical results on CIFAR-100 are given in [Appendix M.3](#). We can see that, for most cases concerning the generalization error, i.e., $|\omega| = 0, 1, 2$ (fix 0, 1, 2 hyper-parameters respectively, and compute corresponding expected mutual information over sub-spaces, details are shown in [Appendix M.1](#)), our new measures, PAC-S(Laplace) and PAC-S(Sampling), achieve the highest mutual information among all complexity measures. On AlexNet, the mutual information of other complexity measures increase, but our new measures still perform best. Generally, the mutual information values of \mathbf{GG} for our measures are significantly higher than those for others (which supports **hypothesis (1)**), because our complexity measures can predict generalization-improvement from weight expansion, which is mainly caused by dropout in our network configurations. Meanwhile, **hypothesis (2)** is also empirically verified as our complexity measures are most closely correlated with dropout.

5.3 DISENTANGLEMENT NOISE OTHER THAN DROPOUT

The experiments in [Sections 5.1](#) and [5.2](#) provide support to the hypotheses (1)&(2) that dropout, weight expansion, and generalization are correlated, with an indication that weight expansion is the proxy to the connection between dropout and the generalization error. Our final experiment is designed to test this observation by considering the replacement of dropout.

We consider the disentanglement noise as presented in [Algorithm 1](#), and train a set of VGG16 networks and AlexNet on CIFAR-10, CIFAR-100, Imagenet-32 and SVHN, with normal training,

dropout training, disentanglement noise training (volume expansion), and stochastic noise training (volume contraction), respectively. As stochastic noises on weights may lead to either weight volume contraction or leave it unchanged, we collect the contraction cases for our experiments. Figure 4 shows that volume expansion improves generalization performance, similar to dropout. Likewise, volume contraction leads to a worse generalization performance. This relation, which further supports **hypothesis (1)**, is persistent across the examined networks and data sets. This suggests that the weight expansion, instead of dropout, can serve as a key indicator of good generalization performance, while dropout provides one method to implement volume expansion. Disentanglement noises may be a valid replacements for dropout.

6 RELATED WORK

From the perspectives of optimizing the training process, related work includes (Baldi & Sadowski, 2013; Wager et al., 2013; Kingma et al., 2015; Helmbold & Long, 2015; 2017; Gal & Ghahramani, 2016; Nalisnick et al., 2019). For example, Wager et al. (2013) considers dropout training as adaptive regularization; Gal & Ghahramani (2016) interprets dropout with a spike-and-slab distribution by variational approximation; and Kingma et al. (2015) re-parameterizes noise on the weights as uncertainty in the hidden units, and proposes variational dropout, a generalization of Gaussian dropout.

Recent research has started to provide a narrative understanding of dropout’s performance (Zhang et al., 2021), and providing variational dropout (Wang & Manning, 2013; Kingma et al., 2015; Gal & Ghahramani, 2016; Gal et al., 2017; Achille & Soatto, 2018; Fan et al., 2020; Lee et al., 2020; Pham & Le, 2021; Fan et al., 2021). And Cavazza et al. (2018); Mianjy et al. (2018); Mianjy & Arora (2019); Arora et al. (2019); Mianjy & Arora (2020) provide a theoretical analysis to understand dropout from the perspective of regularizing the inductive bias. Different from these, we consider explaining dropout through the rigorously defined concept of weight expansion.

Other than dropout, there are works studying how other factors affect the generalization of neural networks (Neyshabur et al., 2018a; Chatterji et al., 2020; Dziugaite et al., 2020b; Sen et al., 2020; Zitong et al., 2020; Hrayr et al., 2020; Mahdi et al., 2020; Menon et al., 2021; Montero et al., 2021), and the relation between gradient noises and generalization (Keskar et al., 2017; Keskar & Socher, 2017; Jastrzebski et al., 2017; Smith & Le, 2018; Xing et al., 2018; Chaudhari & Soatto, 2018; Jastrzebski et al., 2019; Li et al., 2019; Zhu et al., 2019; Jin et al., 2020; Wen et al., 2020) was studied. There was also a NeurIPS 2020 Competition on Predicting Generalization in Deep Learning (Jiang et al., 2020a; Lassance et al., 2020; Natekar & Sharma, 2020).

Since the invention of the PAC-Bayesian framework (McAllester, 1999), there have been a number of canonical works developed in the past decades, including the parametrization of the PAC-Bayesian bound with Gaussian distribution (Seeger, 2002; Langford & Caruana, 2002; Langford & Shawe-Taylor, 2003), the early works about generalization error bounds for learning problems (Maurer, 2004; Germain et al., 2009; Welling & Teh, 2011; Parrado-Hernández et al., 2012) and the recent works about PAC-Bayes for machine learning models (Dwork et al., 2015a;b; Blundell et al., 2015; Alquier et al., 2016; Thiemann et al., 2017; Dziugaite & Roy, 2018; Rivasplata et al., 2019; Letarte et al., 2019; Rivasplata et al., 2020; Pérez-Ortiz et al., 2021b; Haddouche et al., 2021; Pérez-Ortiz et al., 2021a). Specifically, Langford & Shawe-Taylor (2003); Germain et al. (2009); Parrado-Hernández et al. (2012) demonstrate that one can obtain tight PAC-Bayesian generalization bounds through multiplying the weight vector norm with a constant, this is different with the idea of expanding weight volume, as weight volume is a statistical property of weight matrices treated as random variables, while weight vector norm treats weights as deterministic variables (weight vector norm can be seen as the first term in Equation (5), while weight volume is the second term). It is interesting that Alquier et al. (2016) also optimizes PAC-Bayesian bound through a Gaussian posterior with a full covariance matrix. We use a similar assumption (correlated Gaussian posterior) but the main differences are: we develop it under another PAC-Bayesian branch (Dziugaite & Roy, 2017; Neyshabur et al., 2017; 2018a) and apply it on DNNs with connection to dropout noise.

7 CONCLUSION

The paper introduces ‘weight expansion’, an intriguing phenomenon that appears whenever dropout is applied during training. We have provided both theoretical and empirical arguments, which show that weight expansion can be one of the key indicators of the reduced generalization error, and that dropout is effective because it is (an inexpensive) method to obtain such weight expansion.

8 ETHICS STATEMENT AND REPRODUCIBILITY STATEMENT

Ethics Statement. In this work, we present theoretical and empirical results to justify two hypotheses: **(1) weight expansion helps reduce the generalization error** and **(2) dropout increases the weight volume**. All the empirical results are obtained on publicly available benchmark data sets (*e.g.*, CIFAR-10/100, SVHN, ImageNet-32). Thus, our work does not involve any ethics issues.

Reproducibility Statement. In [Section 3](#), to theoretically support **hypothesis (1)** (through PAC-Bayesian framework) and **hypothesis (2)** (through correlation of gradient updates and weights), we have clearly explained (or cited) the assumptions (*e.g.*, Gaussian distributed weights, arbitrarily distributed gradient updates), and have made the complete proofs (or derivations, for [Section 3.1](#), [Lemma 3.1](#) and [Lemma 3.2](#)) in [Appendices D to F](#), and have discussed the relationship between correlation of weights and weight volume in [Appendix G](#) (with a simple proof and two simulations). As for the empirical results in [Sections 5.1 to 5.3](#), experiments in [Sections 5.1](#) and [5.2](#) verify both **hypothesis (1)** and **hypothesis (2)**, while [Section 5.3](#) further supports **hypothesis (1)**. We have uploaded the corresponding scripts to the supplementary file. All these results are conducted and validated on multiple data sets and multiple network architectures.

REFERENCES

- Alessandro Achille and Stefano Soatto. Information dropout: Learning optimal representations through noisy computation. *TPAMI*, 2018.
- Pierre Alquier, James Ridgway, and Nicolas Chopin. On the properties of variational approximations of gibbs posteriors. *JMLR*, 2016.
- Sanjeev Arora, Nadav Cohen, Wei Hu, and Yuping Luo. Implicit regularization in deep matrix factorization. *NeurIPS*, 2019.
- Pierre Baldi and Peter J Sadowski. Understanding dropout. *NIPS*, 2013.
- Nitin Bansal, Xiaohan Chen, and Zhangyang Wang. Can we gain more from orthogonality regularizations in training deep networks? *NeurIPS*, 2018.
- Roberto Battiti. First-and second-order methods for learning: between steepest descent and newton’s method. *Neural computation*, 1992.
- Christopher M Bishop. *Pattern recognition and machine learning*. 2006.
- Charles Blundell, Julien Cornebise, Koray Kavukcuoglu, and Daan Wierstra. Weight uncertainty in neural network. In *ICML*, 2015.
- Piotr Bojanowski, Edouard Grave, Armand Joulin, and Tomas Mikolov. Enriching word vectors with subword information. *TACL*, 2017.
- Aleksandar Botev, Hippolyt Ritter, and David Barber. Practical gauss-newton optimisation for deep learning. *ICML*, 2017.
- Jacopo Cavazza, Pietro Morerio, Benjamin Haeffele, Connor Lane, Vittorio Murino, and Rene Vidal. Dropout as a low-rank regularizer for matrix factorization. *AISTATS*, 2018.
- Niladri Chatterji, Behnam Neyshabur, and Hanie Sedghi. The intriguing role of module criticality in the generalization of deep networks. *ICLR*, 2020.
- Pratik Chaudhari and Stefano Soatto. Stochastic gradient descent performs variational inference, converges to limit cycles for deep networks. *2018 Information Theory and Applications Workshop (ITA)*, 2018.
- Jia Deng, Wei Dong, Richard Socher, Li-Jia Li, Kai Li, and Li Fei-Fei. Imagenet: A large-scale hierarchical image database. In *CVPR*, 2009.
- Cynthia Dwork, Vitaly Feldman, Moritz Hardt, Toniann Pitassi, Omer Reingold, and Aaron Roth. Generalization in adaptive data analysis and holdout reuse. *NIPS*, 2015a.

- Cynthia Dwork, Vitaly Feldman, Moritz Hardt, Toniann Pitassi, Omer Reingold, and Aaron Leon Roth. Preserving statistical validity in adaptive data analysis. In *STOC*, 2015b.
- Gintare Karolina Dziugaite and Daniel M Roy. Computing nonvacuous generalization bounds for deep (stochastic) neural networks with many more parameters than training data. *UAI*, 2017.
- Gintare Karolina Dziugaite and Daniel M Roy. Data-dependent pac-bayes priors via differential privacy. *NeurIPS*, 2018.
- Gintare Karolina Dziugaite, Alexandre Drouin, Brady Neal, Nitarshan Rajkumar, Ethan Caballero, Linbo Wang, Ioannis Mitliagkas, and Daniel M Roy. In search of robust measures of generalization. *NeurIPS*, 2020a.
- Karolina Gintare Dziugaite, Alexandre Drouin, Brady Neal, Nitarshan Rajkumar, Ethan Caballero, Linbo Wang, Ioannis Mitliagkas, and Daniel Roy. In search of robust measures of generalization. *NeurIPS*, 2020b.
- Angela Fan, Edouard Grave, and Armand Joulin. Reducing transformer depth on demand with structured dropout. *ICLR*, 2020.
- Xinjie Fan, Shujian Zhang, Korawat Tanwisuth, Xiaoning Qian, and Mingyuan Zhou. Contextual dropout: An efficient sample-dependent dropout module. *ICLR*, 2021.
- Farzan Farnia, Jesse M Zhang, and David Tse. Generalizable adversarial training via spectral normalization. *ICLR*, 2018.
- Yarin Gal and Zoubin Ghahramani. Dropout as a bayesian approximation: Representing model uncertainty in deep learning. *ICML*, 2016.
- Yarin Gal, Jiri Hron, and Alex Kendall. Concrete dropout. *NIPS*, 2017.
- Hongchang Gao, Jian Pei, and Heng Huang. Demystifying dropout. *International Conference on Machine Learning*, 2019.
- Pascal Germain, Alexandre Lacasse, François Laviolette, and Mario Marchand. Pac-bayesian learning of linear classifiers. In *ICML*, 2009.
- Maxime Haddouche, Benjamin Guedj, Omar Rivasplata, and John Shawe-Taylor. Pac-bayes unleashed: generalisation bounds with unbounded losses. *Entropy*, 2021.
- David P Helmbold and Philip M Long. On the inductive bias of dropout. *JMLR*, 2015.
- David P Helmbold and Philip M Long. Surprising properties of dropout in deep networks. *JMLR*, 2017.
- Geoffrey E Hinton, Nitish Srivastava, Alex Krizhevsky, Ilya Sutskever, and Ruslan R Salakhutdinov. Improving neural networks by preventing co-adaptation of feature detectors. *arXiv preprint arXiv:1207.0580*, 2012.
- Harutyunyan Hrayr, Reing Kyle, Greg Steeg Ver, and Galstyan Aram. Improving generalization by controlling label-noise information in neural network weights. *ICML*, 2020.
- Stanisaw Jastrzebski, Zachary Kenton, Devansh Arpit, Nicolas Ballas, Asja Fischer, Yoshua Bengio, and Amos Storkey. Three factors influencing minima in sgd. *ICANN*, 2017.
- Stanislaw Jastrzebski, Zachary Kenton, Nicolas Ballas, Asja Fischer, Yoshua Bengio, and Amos Storkey. On the relation between the sharpest directions of dnn loss and the sgd step length. *ICLR*, 2019.
- Yiding Jiang, Pierre Foret, Scott Yak, M. Daniel Roy, Hossein Mobahi, Karolina Gintare Dziugaite, Samy Bengio, Suriya Gunasekar, Isabelle Guyon, and Behnam Neyshabur. Neurips 2020 competition: Predicting generalization in deep learning. 2020a.
- Yiding Jiang, Behnam Neyshabur, Hossein Mobahi, Dilip Krishnan, and Samy Bengio. Fantastic generalization measures and where to find them. *ICLR*, 2020b.

- Gaojie Jin, Xinping Yi, Liang Zhang, Lijun Zhang, Sven Schewe, and Xiaowei Huang. How does weight correlation affect the generalisation ability of deep neural networks. *NeurIPS*, 2020.
- Armand Joulin, Edouard Grave, Piotr Bojanowski, Matthijs Douze, H erve J egou, and Tomas Mikolov. Fasttext.zip: Compressing text classification models. *arXiv preprint arXiv:1612.03651*, 2016.
- Armand Joulin, Edouard Grave, Piotr Bojanowski, and Tomas Mikolov. Bag of tricks for efficient text classification. In *EACL*, 2017.
- Nitish Shirish Keskar and Richard Socher. Improving generalization performance by switching from adam to sgd. *arXiv preprint arXiv:1712.07628*, 2017.
- Nitish Shirish Keskar, Dheevatsa Mudigere, Jorge Nocedal, Mikhail Smelyanskiy, and Ping Tak Peter Tang. On large-batch training for deep learning: Generalization gap and sharp minima. *ICLR*, 2017.
- Yoon Kim. Convolutional neural networks for sentence classification. In *EMNLP*, 2014.
- Durk P Kingma, Tim Salimans, and Max Welling. Variational dropout and the local reparameterization trick. *NIPS*, 2015.
- S Kocherlakota and K Kocherlakota. Generalized variance. *Encyclopedia of Statistical Sciences*, 2004.
- Alex Krizhevsky, Geoffrey Hinton, et al. Learning multiple layers of features from tiny images. 2009.
- Alex Krizhevsky, Ilya Sutskever, and Geoffrey E Hinton. Imagenet classification with deep convolutional neural networks. *NIPS*, 2012.
- John Langford and Rich Caruana. (not) bounding the true error. *NIPS*, 2002.
- John Langford and John Shawe-Taylor. Pac-bayes & margins. *NIPS*, 2003.
- Carlos Lassance, Louis B ethune, Myriam Bontonou, Mounia Hamidouche, and Vincent Gripon. Ranking deep learning generalization using label variation in latent geometry graphs. *arXiv preprint arXiv:2011.12737*, 2020.
- Beom Hae Lee, Taewook Nam, Eunho Yang, and Ju Sung Hwang. Meta dropout: Learning to perturb latent features for generalization. *ICLR*, 2020.
- Benjamin Lengerich, Eric P Xing, and Rich Caruana. On dropout, overfitting, and interaction effects in deep neural networks. *arXiv preprint arXiv:2007.00823*, 2020.
- Ga el Letarte, Pascal Germain, Benjamin Guedj, and Fran ois Laviolette. Dichotomize and generalize: Pac-bayesian binary activated deep neural networks. *NeurIPS*, 2019.
- Yuanzhi Li, Colin Wei, and Tengyu Ma. Towards explaining the regularization effect of initial large learning rate in training neural networks. *NeurIPS*, 2019.
- Pengfei Liu, Xipeng Qiu, and Xuanjing Huang. Recurrent neural network for text classification with multi-task learning. *arXiv preprint arXiv:1605.05101*, 2016.
- Haghifam Mahdi, Negrea Jeffrey, Khisti Ashish, Daniel Roy M., and Gintare Dziugaite Karolina. Sharpened generalization bounds based on conditional mutual information and an application to noisy, iterative algorithms. *NeurIPS*, 2020.
- James Martens and Roger Grosse. Optimizing neural networks with kronecker-factored approximate curvature. *ICML*, 2015.
- Andreas Maurer. A note on the pac bayesian theorem. *arXiv preprint cs/0411099*, 2004.
- David A McAllester. Pac-bayesian model averaging. In *COLT*, 1999.

- Krishna Aditya Menon, Singh Ankit Rawat, and Sanjiv Kumar. Overparameterisation and worst-case generalisation: friend or foe? *ICLR*, 2021.
- Poorya Mianjy and Raman Arora. On dropout and nuclear norm regularization. *ICML*, 2019.
- Poorya Mianjy and Raman Arora. On convergence and generalization of dropout training. *NeurIPS*, 2020.
- Poorya Mianjy, Raman Arora, and Rene Vidal. On the implicit bias of dropout. *ICML*, 2018.
- Dmytro Mishkin and Jiri Matas. All you need is a good init. *arXiv preprint arXiv:1511.06422*, 2015.
- Llera Milton Montero, JH Casimir Ludwig, Ponte Rui Costa, Gaurav Malhotra, and Jeffrey Bowers. The role of disentanglement in generalisation. *ICLR*, 2021.
- Vaishnavh Nagarajan and J Zico Kolter. Generalization in deep networks: The role of distance from initialization. *arXiv preprint arXiv:1901.01672*, 2019.
- Eric T. Nalisnick, José Miguel Hernández-Lobato, and Padhraic Smyth. Dropout as a structured shrinkage prior. *ICML*, 2019.
- Parth Natekar and Manik Sharma. Representation based complexity measures for predicting generalization in deep learning. *arXiv preprint arXiv:2012.02775*, 2020.
- Yuval Netzer, Tao Wang, Adam Coates, Alessandro Bissacco, Bo Wu, and Andrew Y Ng. Reading digits in natural images with unsupervised feature learning. 2011.
- Behnam Neyshabur, Russ R Salakhutdinov, and Nati Srebro. Path-sgd: Path-normalized optimization in deep neural networks. *NIPS*, 2015a.
- Behnam Neyshabur, Ryota Tomioka, and Nathan Srebro. Norm-based capacity control in neural networks. *COLT*, 2015b.
- Behnam Neyshabur, Srinadh Bhojanapalli, David Mcallester, and Nati Srebro. Exploring generalization in deep learning. *NIPS*, 2017.
- Behnam Neyshabur, Srinadh Bhojanapalli, and Nathan Srebro. A pac-bayesian approach to spectrally-normalized margin bounds for neural networks. *ICLR*, 2018a.
- Behnam Neyshabur, Zhiyuan Li, Srinadh Bhojanapalli, Yann LeCun, and Nathan Srebro. Towards understanding the role of over-parametrization in generalization of neural networks. *arXiv preprint arXiv:1805.12076*, 2018b.
- Emilio Parrado-Hernández, Amiran Ambroladze, John Shawe-Taylor, and Shiliang Sun. Pac-bayes bounds with data dependent priors. *JMLR*, 2012.
- María Pérez-Ortiz, Omar Rivasplata, Benjamin Guedj, Matthew Gleeson, Jingyu Zhang, John Shawe-Taylor, Mirosław Bober, and Josef Kittler. Learning pac-bayes priors for probabilistic neural networks. *arXiv preprint arXiv:2109.10304*, 2021a.
- Maria Pérez-Ortiz, Omar Rivasplata, John Shawe-Taylor, and Csaba Szepesvári. Tighter risk certificates for neural networks. *JMLR*, 2021b.
- Hieu Pham and Quoc V Le. Autodropout: Learning dropout patterns to regularize deep networks. *AAAI*, 2021.
- Konstantinos Pitas, Mike Davies, and Pierre Vandergheynst. Pac-bayesian margin bounds for convolutional neural networks. *arXiv preprint arXiv:1801.00171*, 2017.
- Hippolyt Ritter, Aleksandar Botev, and David Barber. A scalable laplace approximation for neural networks. *ICLR*, 2018.
- Omar Rivasplata, Vikram M Tankasali, and Csaba Szepesvari. Pac-bayes with backprop. *arXiv preprint arXiv:1908.07380*, 2019.

- Omar Rivasplata, Ilya Kuzborskij, Csaba Szepesvári, and John Shawe-Taylor. Pac-bayes analysis beyond the usual bounds. In *NeurIPS*, 2020.
- Andrew M Saxe, James L McClelland, and Surya Ganguli. Exact solutions to the nonlinear dynamics of learning in deep linear neural networks. *arXiv preprint arXiv:1312.6120*, 2013.
- Matthias Seeger. Pac-bayesian generalisation error bounds for gaussian process classification. *Journal of machine learning research*, 3(Oct):233–269, 2002.
- Wu Sen, Hongyang Zhang R., Valiant Gregory, and Ré Christopher. On the generalization effects of linear transformations in data augmentation. *ICML*, 2020.
- Adrian J Shepherd. *Second-order methods for neural networks: Fast and reliable training methods for multi-layer perceptrons*. Springer Science & Business Media, 2012.
- Karen Simonyan and Andrew Zisserman. Very deep convolutional networks for large-scale image recognition. *arXiv preprint arXiv:1409.1556*, 2014.
- Samuel L Smith and Quoc V Le. A bayesian perspective on generalization and stochastic gradient descent. *ICLR*, 2018.
- Nitish Srivastava, Geoffrey Hinton, Alex Krizhevsky, Ilya Sutskever, and Ruslan Salakhutdinov. Dropout: a simple way to prevent neural networks from overfitting. *JMLR*, 2014.
- Maosong Sun, Jingyang Li, Zhipeng Guo, Z Yu, Y Zheng, X Si, and Z Liu. Thuctc: an efficient chinese text classifier. *GitHub Repository*, 2016.
- Niklas Thiemann, Christian Igel, Olivier Wintenberger, and Yevgeny Seldin. A strongly quasiconvex pac-bayesian bound. In *ALT*, 2017.
- Stefan Wager, Sida Wang, and Percy S Liang. Dropout training as adaptive regularization. *NIPS*, 2013.
- Sida Wang and Christopher Manning. Fast dropout training. *ICML*, 2013.
- Colin Wei, Sham Kakade, and Tengyu Ma. The implicit and explicit regularization effects of dropout. *ICML*, 2020.
- Max Welling and Yee W Teh. Bayesian learning via stochastic gradient langevin dynamics. In *ICML*, 2011.
- Yeming Wen, Kevin Luk, Maxime Gazeau, Guodong Zhang, Harris Chan, and Jimmy Ba. Interplay between optimization and generalization of stochastic gradient descent with covariance noise. *AISTATS*, 2020.
- Chen Xing, Devansh Arpit, Christos Tsirigotis, and Yoshua Bengio. A walk with sgd. *arXiv preprint arXiv:1802.08770*, 2018.
- Yuichi Yoshida and Takeru Miyato. Spectral norm regularization for improving the generalizability of deep learning. *arXiv preprint arXiv:1705.10941*, 2017.
- Hao Zhang, Sen Li, YinChao Ma, Mingjie Li, Yichen Xie, and Quanshi Zhang. Towards understanding and improving dropout in game theory. *ICLR*, 2021.
- Zhanxing Zhu, Jingfeng Wu, Bing Yu, Lei Wu, and Jinwen Ma. The anisotropic noise in stochastic gradient descent: Its behavior of escaping from sharp minima and regularization effects. *ICML*, 2019.
- Yang Zitong, Yu Yaodong, You Chong, Steinhardt Jacob, and Ma Yi. Rethinking bias-variance trade-off for generalization of neural networks. *ICML*, 2020.

APPENDIX

A	Details of Figure 1	16
B	Weight Volume and Weight Orthogonality	16
C	Supplementary for Figure 2	16
D	Detailed Derivation of PAC-Bayes	17
E	Proof of Lemma 3.1	18
F	Proof of Lemma 3.2	19
G	Weight Volume and Correlation	19
H	Other Regularizers with Weight Volume	20
I	Supplementary for Sampling Method	20
J	Estimate Weight Volume	20
K	Embedding Dropout Noise η^{do} to Covariance Matrix Σ_l^{do}	21
L	Supplementary for Section 5.1	21
M	Details of Experiments in Section 5.2	22
N	Supplementary for Experiment 5.3	24
O	Experiments on Text Classification	24
P	Future Work	24
Q	Rebuttal to Reviewer iaGH	26
R	Rebuttal to Reviewer wW51	29
S	Rebuttal to Reviewer w6em	33
T	Rebuttal to Reviewer nB1c	34

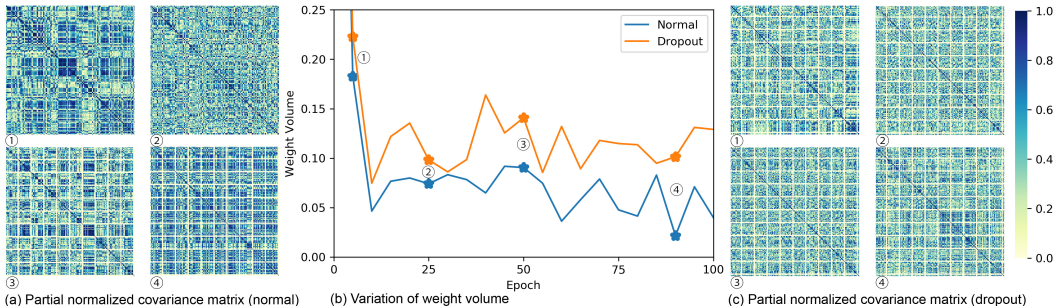


Figure 5: We have trained two VGG16 networks (with/without dropout) on CIFAR-10. (b) shows the changes in weight volume along with epochs. There are four sampling points (①②③④) to track the absolute normalized covariance matrix of normal gradient updates (a) and dropout gradient updates (c).

Table 3: Network Structure for Figure 1.

Normal CNN	Conv-64-(3,3)	Conv-128-(3,3)	MaxPool-(7,7)	Dense-128		Dense-2	Softmax
Dropout CNN	Conv-64-(3,3)	Conv-128-(3,3)	MaxPool-(7,7)	Dense-128	Dropout-0.3	Dense-2	Softmax

A DETAILS OF FIGURE 1

As Table 3 shows, we use the above two networks to train MNIST with ReLU activation function, 0.01 learning rate, 128 minibatch size, stochastic gradient descent (SGD), 150 epochs, with and without dropout. Normal CNN and dropout CNN contain multiple convolutional layers with 64 and 128 channels, following with 128 and 2 hidden units. We visualize the features of Dense-2 layer in Figure 1.

B WEIGHT VOLUME AND WEIGHT ORTHOGONALITY

For clarification, weight volume is not the orthogonality of weight matrices, but the “normalized generalized variance” of weight matrices. It is a statistical property of weight matrices when treated as **random variables**, which is different from the orthogonality technique in Saxe et al. (2013); Mishkin & Matas (2015); Bansal et al. (2018) that treat weight matrices as **deterministic variables**.

Specifically, by treating the elements in weight matrices as random variables (to fit the PAC-Bayes framework), the weight volume is defined as the determinant of the “covariance matrix” of weight matrices (see Definition 3.1). The optimization of the determinant of the covariance will not necessarily lead to orthogonality of weight matrices. It appears that weight volume considers the statistical correlation between any two weights (treated as random variables), whereas weight orthogonality considers the linear space correlation between any two columns in weight matrices.

E.g., multivariate random variable \mathbf{W} is made up of two terms, say $\mathbf{W} = \text{vec}(W) + \mathbf{U}_W$, where $\text{vec}(W)$ is the vectorization of weight matrix and \mathbf{U}_W is the 0 mean multivariate random variable. Weight volume relies on the covariance matrix of \mathbf{U}_W , while weight orthogonality depends on W .

C SUPPLEMENTARY FOR FIGURE 2

Figure 5 also shows that the correlation among gradient updates in the normal network (Figure 5a) is larger than the correlation in dropout network (Figure 5c) and large correlation of gradient updates can lead to small weight volume (large correlation of weights), while small correlation of gradient updates can lead to large weight volume (small correlation of weights).

D DETAILED DERIVATION OF PAC-BAYES

McAllester (1999); Dziugaite & Roy (2017) consider a training set S with $m \in \mathbb{N}$ samples drawn from a distribution D . Given the prior and posterior distributions P and Q on the weights \mathbf{W} respectively, for any $\delta > 0$, with probability $1 - \delta$ over the draw of training set, we have

$$\mathbb{E}_{\mathbf{W} \sim Q}[\mathcal{L}_D(f\mathbf{W})] \leq \mathbb{E}_{\mathbf{W} \sim Q}[\mathcal{L}_S(f\mathbf{W})] + \sqrt{\frac{D_{\text{KL}}(Q||P) + \ln \frac{m}{\delta}}{2(m-1)}}. \quad (12)$$

Equation (4): Let $P = \mathcal{N}(\mu_P, \Sigma_P)$ and $Q = \mathcal{N}(\mu_Q, \Sigma_Q)$, we can get

$$\begin{aligned} D_{\text{KL}}(\mathcal{N}(\mu_Q, \Sigma_Q)||\mathcal{N}(\mu_P, \Sigma_P)) &= \int [\ln(Q(x)) - \ln(P(x))]Q(x)dx \\ &= \int \left[\frac{1}{2} \ln \frac{\det \Sigma_P}{\det \Sigma_Q} - \frac{1}{2} (x - \mu_Q)^\top \Sigma_Q^{-1} (x - \mu_Q) + \frac{1}{2} (x - \mu_P)^\top \Sigma_P^{-1} (x - \mu_P) \right] Q(x) dx \\ &= \frac{1}{2} \ln \frac{\det \Sigma_P}{\det \Sigma_Q} - \frac{1}{2} \text{tr}\{\mathbb{E}[(x - \mu_Q)(x - \mu_Q)^\top] \Sigma_Q^{-1}\} + \frac{1}{2} \text{tr}\{\mathbb{E}[(x - \mu_P)^\top \Sigma_P^{-1} (x - \mu_P)]\} \quad (13) \\ &= \frac{1}{2} \ln \frac{\det \Sigma_P}{\det \Sigma_Q} - \frac{1}{2} \text{tr}(I_k) + \frac{1}{2} (\mu_Q - \mu_P)^\top \Sigma_P^{-1} (\mu_Q - \mu_P) + \frac{1}{2} \text{tr}(\Sigma_P^{-1} \Sigma_Q) \\ &= \frac{1}{2} \left[\text{tr}(\Sigma_P^{-1} \Sigma_Q) + (\mu_Q - \mu_P)^\top \Sigma_P^{-1} (\mu_Q - \mu_P) - k + \ln \frac{\det(\Sigma_P)}{\det(\Sigma_Q)} \right]. \end{aligned}$$

Equation (5): Neyshabur et al. (2017); Jiang et al. (2020b) instantiate the prior P to be a $\text{vec}(W^0)$ mean, σ^2 variance Gaussian distribution and the posterior Q to be a $\text{vec}(W^F)$ mean spherical Gaussian with variance σ^2 in each direction. Relax their assumption, we assume Q is a non-spherical Gaussian (**the off-diagonal correlations for same layer are not 0, those for different layers are 0**), then we can get

$$\begin{aligned} D_{\text{KL}}(Q||P) &= \frac{\|W^F - W^0\|_F^2}{2\sigma^2} + \frac{1}{2} \ln \frac{\det(\Sigma_P)}{\det(\Sigma_Q)} \\ &= \sum_l \frac{\|W_l^F - W_l^0\|_F^2}{2\sigma^2} + \frac{1}{2} \ln \prod_l \frac{\det(\Sigma_{l,P})}{\det(\Sigma_{l,Q})} \\ &= \frac{1}{2} \sum_l \left(\frac{\|W_l^F - W_l^0\|_F^2}{\sigma^2} + \ln \frac{\det(\Sigma_{l,P})}{\det(\Sigma_{l,Q})} \right) \\ &= \frac{1}{2} \sum_l \left(\frac{\|W_l^F - W_l^0\|_F^2}{\sigma_l^2} + \ln \frac{\prod_i [\Sigma_{l,P}]_{ii}}{\det(\Sigma_{l,Q})} \right) \quad (14) \\ &= \frac{1}{2} \sum_l \left(\frac{\|W_l^F - W_l^0\|_F^2}{\sigma_l^2} + \ln \frac{\prod_i [\Sigma_{l,Q}]_{ii}}{\det(\Sigma_{l,Q})} \right) \\ &= \frac{1}{2} \sum_l \left(\frac{\|W_l^F - W_l^0\|_F^2}{\sigma_l^2} + \ln \frac{1}{\text{vol}(\mathbf{W}_l)} \right). \end{aligned}$$

E PROOF OF LEMMA 3.1

Proof E.1 Let $\Delta_{ij}, \Delta_{i'j'}$ be the gradient updates for $\mathbf{w}_{ij}, \mathbf{w}_{i'j'}$ of some layer in a normal network, $i \neq i', \Delta_{ij}^{\text{do}}$ and $\Delta_{i'j'}^{\text{do}}$ be the gradient updates for $\mathbf{w}_{ij}, \mathbf{w}_{i'j'}$ in the same setting dropout network. Let $\text{vec}(\Delta) \sim \mathcal{M}_\Delta(\mu_\Delta, \Sigma_\Delta)$ and $\text{vec}(\Delta^{\text{do}}) = (\mathbf{1} + \mathbf{1} \otimes \eta^{\text{do}}) \odot \text{vec}(\Delta^{\text{do}'})$, $\text{vec}(\Delta^{\text{do}'}) \sim \mathcal{M}_\Delta(\mu_\Delta, \Sigma_\Delta)$. **Note that, as we aim to study the impact of η^{do} on the correlation among gradient updates, we assume $\text{vec}(\Delta)$ and $\text{vec}(\Delta^{\text{do}'})$ obey the same arbitrary distribution \mathcal{M}_Δ . As dropout noise and gradient update are independent, dropout noises for different neurons (kernels) are independent, we have**

$$\begin{aligned}
\text{Cov}(\Delta_{ij}^{\text{do}}, \Delta_{i'j'}^{\text{do}}) &= \mathbb{E}_{\Delta^{\text{do}}} [(\Delta_{ij}^{\text{do}} - \mu_{\Delta_{ij}^{\text{do}}})(\Delta_{i'j'}^{\text{do}} - \mu_{\Delta_{i'j'}^{\text{do}}})] \\
&= (1-q)^2 \mathbb{E}_{\Delta^{\text{do}'}} \left[\left(\frac{\Delta_{ij}^{\text{do}'}}{1-q} - \mu_{\Delta_{ij}} \right) \left(\frac{\Delta_{i'j'}^{\text{do}'}}{1-q} - \mu_{\Delta_{i'j'}} \right) \right] + (1-q)q \\
&\quad \mathbb{E}_{\Delta^{\text{do}'}} \left[\left(\frac{\Delta_{i'j'}^{\text{do}'}}{1-q} - \mu_{\Delta_{i'j'}} \right) (-\mu_{\Delta_{ij}}) \right] + (1-q)q \mathbb{E}_{\Delta^{\text{do}'}} \left[\left(\frac{\Delta_{ij}^{\text{do}'}}{1-q} - \mu_{\Delta_{ij}} \right) (-\mu_{\Delta_{i'j'}}) \right] \\
&\quad + q^2 [(-\mu_{\Delta_{i'j'}})(-\mu_{\Delta_{ij}})] \\
&= \mathbb{E}_{\Delta^{\text{do}'}} [(\Delta_{ij}^{\text{do}'} - \mu_{\Delta_{ij}})(\Delta_{i'j'}^{\text{do}'} - \mu_{\Delta_{i'j'}})] \\
&= \mathbb{E}_\Delta [(\Delta_{ij} - \mu_{\Delta_{ij}})(\Delta_{i'j'} - \mu_{\Delta_{i'j'}})] \\
&= \text{Cov}(\Delta_{ij}, \Delta_{i'j'}),
\end{aligned} \tag{15}$$

and

$$\begin{aligned}
\text{Var}(\Delta_{ij}^{\text{do}}) &= \mathbb{E}_{\Delta^{\text{do}}} [(\Delta_{ij}^{\text{do}} - \mu_{\Delta_{ij}^{\text{do}}})^2] \\
&= (1-q) \mathbb{E}_{\Delta^{\text{do}'}} \left[\left(\frac{\Delta_{ij}^{\text{do}'}}{1-q} - \mu_{\Delta_{ij}} \right)^2 \right] + q(-\mu_{\Delta_{ij}})^2 \\
&= \frac{\mathbb{E}_{\Delta^{\text{do}'}} [(\Delta_{ij}^{\text{do}'} - \mu_{\Delta_{ij}})^2]}{1-q} + \frac{q\mu_{\Delta_{ij}}^2}{1-q} \\
&= \frac{\mathbb{E}_\Delta [(\Delta_{ij} - \mu_{\Delta_{ij}})^2]}{1-q} + \frac{q\mu_{\Delta_{ij}}^2}{1-q} \\
&= \frac{\text{Var}(\Delta_{ij})}{1-q} + \frac{q\mu_{\Delta_{ij}}^2}{1-q}.
\end{aligned} \tag{16}$$

Similarly, $\text{Var}(\Delta_{i'j'}^{\text{do}}) = \frac{\text{Var}(\Delta_{i'j'})}{1-q} + \frac{q\mu_{\Delta_{i'j'}}^2}{1-q}$. Thus, we have

$$\begin{aligned}
|\rho_{\Delta_{ij}^{\text{do}}, \Delta_{i'j'}^{\text{do}}}| &= \frac{|\text{Cov}(\Delta_{ij}^{\text{do}}, \Delta_{i'j'}^{\text{do}})|}{\sqrt{\text{Var}(\Delta_{ij}^{\text{do}})\text{Var}(\Delta_{i'j'}^{\text{do}})}} \\
&= \frac{|\text{Cov}(\Delta_{ij}, \Delta_{i'j'})|}{\sqrt{\left(\frac{\text{Var}(\Delta_{ij})}{1-q} + \frac{q\mu_{\Delta_{ij}}^2}{1-q} \right) \left(\frac{\text{Var}(\Delta_{i'j'})}{1-q} + \frac{q\mu_{\Delta_{i'j'}}^2}{1-q} \right)}} \\
&\leq \frac{(1-q)|\text{Cov}(\Delta_{ij}, \Delta_{i'j'})|}{\sqrt{\text{Var}(\Delta_{ij})\text{Var}(\Delta_{i'j'})}} \\
&= (1-q)|\rho_{\Delta_{ij}, \Delta_{i'j'}}| \\
&\leq |\rho_{\Delta_{ij}, \Delta_{i'j'}}|.
\end{aligned} \tag{17}$$

F PROOF OF LEMMA 3.2

Proof F.1 As dropout noise and weight are independent, and $\mathbf{W} \sim \mathcal{N}_{\mathbf{W}}$, we have

$$\begin{aligned}
\text{Cov}(\mathbf{w}_{ij}, \Delta_{i'j'}^{\text{do}}) &= \mathbb{E}_{\mathbf{w}, \Delta^{\text{do}}} [(\mathbf{w}_{ij} - \mu_{\mathbf{w}_{ij}})(\Delta_{i'j'}^{\text{do}} - \mu_{\Delta_{i'j'}^{\text{do}}})] \\
&= (1-q)\mathbb{E}_{\mathbf{w}, \Delta^{\text{do}}} [(\mathbf{w}_{ij} - \mu_{\mathbf{w}_{ij}})\left(\frac{\Delta_{i'j'}^{\text{do}}}{1-q} - \mu_{\Delta_{i'j'}^{\text{do}}}\right)] + q\mathbb{E}_{\mathbf{w}} [(\mathbf{w}_{ij} - \mu_{\mathbf{w}_{ij}})(-\mu_{\Delta_{i'j'}^{\text{do}}})] \\
&= \mathbb{E}_{\mathbf{w}, \Delta^{\text{do}}} [(\mathbf{w}_{ij} - \mu_{\mathbf{w}_{ij}})(\Delta_{i'j'}^{\text{do}} - \mu_{\Delta_{i'j'}^{\text{do}}})] \\
&= \mathbb{E}_{\mathbf{w}, \Delta} [(\mathbf{w}_{ij} - \mu_{\mathbf{w}_{ij}})(\Delta_{i'j'} - \mu_{\Delta_{i'j'}})] \\
&= \text{Cov}(\mathbf{w}_{ij}, \Delta_{i'j'}),
\end{aligned} \tag{18}$$

$\text{Cov}(\mathbf{w}_{ij}, \Delta_{ij}^{\text{do}})$, $\text{Cov}(\mathbf{w}_{i'j'}, \Delta_{i'j'}^{\text{do}})$ and $\text{Cov}(\mathbf{w}_{i'j'}, \Delta_{ij}^{\text{do}})$ are similar. From Equations (15) and (16), we can get

$$\begin{aligned}
&|\rho_{\mathbf{w}_{ij} + \Delta_{ij}^{\text{do}}, \mathbf{w}_{i'j'} + \Delta_{i'j'}^{\text{do}}}| \\
&= \frac{|\text{Cov}(\mathbf{w}_{ij} + \Delta_{ij}^{\text{do}}, \mathbf{w}_{i'j'} + \Delta_{i'j'}^{\text{do}})|}{\sqrt{\text{Var}(\mathbf{w}_{ij} + \Delta_{ij}^{\text{do}})\text{Var}(\mathbf{w}_{i'j'} + \Delta_{i'j'}^{\text{do}})}} \\
&= \frac{|\text{Cov}(\mathbf{w}_{ij}, \mathbf{w}_{i'j'}) + \text{Cov}(\Delta_{ij}^{\text{do}}, \Delta_{i'j'}^{\text{do}}) + \text{Cov}(\mathbf{w}_{ij}, \Delta_{i'j'}^{\text{do}}) + \text{Cov}(\mathbf{w}_{i'j'}, \Delta_{ij}^{\text{do}})|}{\sqrt{(\text{Var}(\mathbf{w}_{ij}) + \text{Var}(\Delta_{ij}^{\text{do}}) + 2\text{Cov}(\mathbf{w}_{ij}, \Delta_{ij}^{\text{do}}))(\text{Var}(\mathbf{w}_{i'j'}) + \text{Var}(\Delta_{i'j'}^{\text{do}}) + 2\text{Cov}(\mathbf{w}_{i'j'}, \Delta_{i'j'}^{\text{do}}))}} \\
&= \frac{|\text{Cov}(\mathbf{w}_{ij}, \mathbf{w}_{i'j'}) + \text{Cov}(\Delta_{ij}, \Delta_{i'j'}) + \text{Cov}(\mathbf{w}_{ij}, \Delta_{i'j'}) + \text{Cov}(\mathbf{w}_{i'j'}, \Delta_{ij})|}{\sqrt{(\text{Var}(\mathbf{w}_{ij}) + \text{Var}(\Delta_{ij}^{\text{do}}) + 2\text{Cov}(\mathbf{w}_{ij}, \Delta_{ij}))(\text{Var}(\mathbf{w}_{i'j'}) + \text{Var}(\Delta_{i'j'}^{\text{do}}) + 2\text{Cov}(\mathbf{w}_{i'j'}, \Delta_{i'j'}))}} \\
&= \frac{|\text{Cov}(\mathbf{w}_{ij}, \mathbf{w}_{i'j'}) + \text{Cov}(\Delta_{ij}, \Delta_{i'j'}) + \text{Cov}(\mathbf{w}_{ij}, \Delta_{i'j'}) + \text{Cov}(\mathbf{w}_{i'j'}, \Delta_{ij})|}{\sqrt{(\text{Var}(\mathbf{w}_{ij}) + \frac{\text{Var}(\Delta_{ij})}{1-q} + \frac{q\mu_{\Delta_{ij}}^2}{1-q} + 2\text{Cov}(\mathbf{w}_{ij}, \Delta_{ij}))}} \\
&= \frac{|\text{Cov}(\mathbf{w}_{ij} + \Delta_{ij}, \mathbf{w}_{i'j'} + \Delta_{i'j'})|}{\sqrt{(\text{Var}(\mathbf{w}_{i'j'}) + \frac{\text{Var}(\Delta_{i'j'})}{1-q} + \frac{q\mu_{\Delta_{i'j'}}^2}{1-q} + 2\text{Cov}(\mathbf{w}_{i'j'}, \Delta_{i'j'}))}} \\
&\leq \frac{|\text{Cov}(\mathbf{w}_{ij} + \Delta_{ij}, \mathbf{w}_{i'j'} + \Delta_{i'j'})|}{\sqrt{(\text{Var}(\mathbf{w}_{ij} + \Delta_{ij}) + \frac{q\text{Var}(\Delta_{ij})}{1-q})(\text{Var}(\mathbf{w}_{i'j'} + \Delta_{i'j'}) + \frac{q\text{Var}(\Delta_{i'j'})}{1-q})}} \\
&\leq \frac{|\text{Cov}(\mathbf{w}_{ij} + \Delta_{ij}, \mathbf{w}_{i'j'} + \Delta_{i'j'})|}{\sqrt{\text{Var}(\mathbf{w}_{ij} + \Delta_{ij})\text{Var}(\mathbf{w}_{i'j'} + \Delta_{i'j'})}} \\
&= |\rho_{\mathbf{w}_{ij} + \Delta_{ij}, \mathbf{w}_{i'j'} + \Delta_{i'j'}}|.
\end{aligned}$$

G WEIGHT VOLUME AND CORRELATION

Since the definition of weight volume in Definition 3.1, the weight volume equals the determinant of the weight correlation matrix.

It is difficult to theoretically argue an ‘exact’ relationship (e.g., perfect positive or negative) between weight volume and correlation of weights, but they have a rough negative relationship. Take a simple example, let n -dimensional weight correlation matrix C have the same correlation ρ , it is easy to infer that (absolute) correlation is negative related with weight volume, as

$$\det(C) = (1 - \rho)^{n-1}(1 + (n - 1)\rho), \tag{19}$$

where $\frac{d\det(C)}{d\rho} = (n - n^2)\rho(1 - \rho)^{n-2}$ and $n \geq 2$. Also, we demonstrate the relationship between weight volume and average (absolute) correlation with 10000 samples for a 3-dimensional correlation matrix (Figure 6a) and a 4-dimensional correlation matrix (Figure 6b) respectively. Although weight volume is not monotonically increasing as (absolute) correlation decreases, we can find a rough negative relationship.

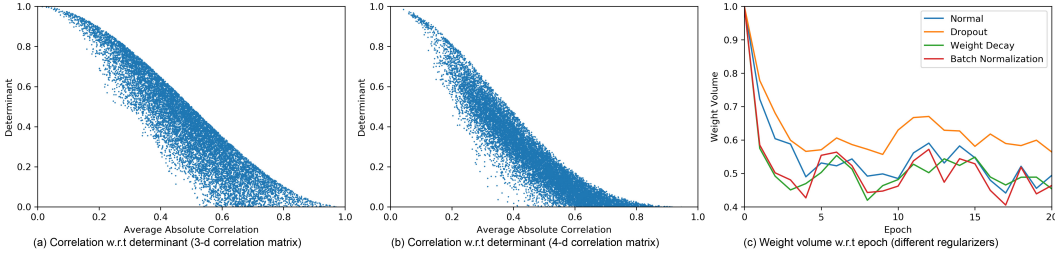


Figure 6: **(a)** We sample 10000 3-dimensional correlation matrices and show their determinant and average absolute correlation. **(b)** We sample 10000 4-dimensional correlation matrices and show their determinant and average absolute correlation. **(c)** We train four small NNs (64-32-16-10 with normal, dropout, weight decay, and batch normalization, respectively) on MNIST. The figure shows the changes in weight volume along with epochs for these four networks.

H OTHER REGULARIZERS WITH WEIGHT VOLUME

As dropout can generate independent noises but other regularizers, like weight decay and batch normalization, cannot. Thus, dropout can introduce randomness into the network, while weight decay and batch normalization cannot (these two regularizers improve generalization not through weight volume, through other keys). We have described in detail why this dropout noise can expand weight volume and why weight volume is correlated with generalization, theoretically (Section 3) and empirically (Section 5, Figures 2 and 5).

Also, in Figure 6c, we can see that dropout expands weight volume compared with normal network, while weight decay and batch normalization have hardly any impact on weight volume.

I SUPPLEMENTARY FOR SAMPLING METHOD

Sampling Method: As mentioned in Section 4, we use sharpness-like method (Keskar et al., 2017) to get a set of weight samples ($W + U$). To get the samples from the posteriori distribution steadily and fastly, we train the convergent network with learning rate 0.0001, noise U and 50 epochs, then collect corresponding 50 samples. As the samples are stabilized at training loss and validation loss but with different weights, we can treat them as the samples from same posteriori distribution. Details are given in the code.

J ESTIMATE WEIGHT VOLUME

The approximation of $\mathbb{E}_s[H_l]$ is two-fold: (1) Only the diagonal blocks of the weight matrix are captured, so that the correlation between blocks is decoupled; (2) Assume \mathcal{A}_{l-1} and \mathcal{H}_l are independent (Botev et al., 2017; Ritter et al., 2018). Then, we have

$$\mathbb{E}_s[H_l] = \mathbb{E}_s[\mathcal{A}_{l-1} \otimes \mathcal{H}_l] \approx \mathbb{E}_s[\mathcal{A}_{l-1}] \otimes \mathbb{E}_s[\mathcal{H}_l]. \quad (20)$$

Finally, Σ_l can be approximated as follows:

$$\Sigma_l = (\mathbb{E}_s[H_l])^{-1} \approx (\mathbb{E}_s[\mathcal{A}_{l-1}])^{-1} \otimes (\mathbb{E}_s[\mathcal{H}_l])^{-1}. \quad (21)$$

Therefore, by separately computing the matrix inverse of $\mathbb{E}_s[\mathcal{A}_{l-1}]$ and $\mathbb{E}_s[\mathcal{H}_l]$, whose sizes are significantly smaller, we can estimate $\Sigma_l \in \mathbb{R}^{N_{l-1}N_l \times N_{l-1}N_l}$ efficiently.

Further, the weight volume can be approximated by using

$$\det(\Sigma_l) \approx \det((\mathbb{E}_s[\mathcal{A}_{l-1}])^{-1})^{N_l} \cdot \det((\mathbb{E}_s[\mathcal{H}_l])^{-1})^{N_{l-1}} \quad (22)$$

and

$$\prod_i [\Sigma_l]_{ii} \approx \left(\prod_c [(\mathbb{E}_s[\mathcal{A}_{l-1}])^{-1}]_{cc} \right)^{N_l} \cdot \left(\prod_d [(\mathbb{E}_s[\mathcal{H}_l])^{-1}]_{dd} \right)^{N_{l-1}}. \quad (23)$$

Table 4: Weight Volume on VGG Networks (ImageNet-32, weight decay = 0).

Method	VGG11	VGG11(dropout)	VGG16	VGG16(dropout)	VGG19	VGG19(dropout)
Sampling	0.015±0.01	0.089±0.01	0.016±0.01	0.097±0.01	0.017±0.01	0.086±0.01
Laplace	0.0198	0.0985	0.0194	0.0942	0.0214	0.0977
Generalization Gap	7.0388	2.0501	6.3922	1.2430	7.5187	0.7910

Table 5: VGG11 Structure

Conv-64	Maxpooling	Conv-128	Maxpooling	Conv-256	Dropout(0.3)	Conv-256	Maxpooling	Conv-512	Dropout(0.3)
Conv-512	Maxpooling	Conv-512	Dropout(0.3)	Conv-512	Maxpooling	Dropout(0.1)	Dense-512	Dropout(0.1)	Dense-(num classes)

Table 6: VGG16 Structure

Conv-64	Dropout(0.3)	Conv-64	Maxpooling	Conv-128	Dropout(0.3)	Conv-128	Maxpooling	Conv-256	Dropout(0.3)
Conv-256	Dropout(0.3)	Conv-256	Maxpooling	Conv-512	Dropout(0.3)	Conv-512	Dropout(0.3)	Conv-512	Maxpooling
Conv-512	Dropout(0.3)	Conv-512	Dropout(0.3)	Conv-512	Maxpooling	Dropout(0.1)	Dense-512	Dropout(0.1)	Dense-(num classes)

Table 7: VGG19 Structure

Conv-64	Dropout(0.3)	Conv-64	Maxpooling	Conv-128	Dropout(0.3)	Conv-128	Maxpooling	Conv-256	Dropout(0.3)
Conv-256	Dropout(0.3)	Conv-256	Dropout(0.3)	Conv-256	Maxpooling	Conv-512	Dropout(0.3)	Conv-512	Dropout(0.3)
Conv-512	Dropout(0.3)	Conv-512	Maxpooling	Conv-512	Dropout(0.3)	Conv-512	Dropout(0.3)	Conv-512	Dropout(0.3)
Conv-512	Maxpooling	Dropout(0.1)	Dense-512	Dropout(0.1)	Dense-(num classes)				

Table 8: Weight Volume on VGG Networks (ImageNet-32, weight decay = 0).

Method	VGG11	VGG11(dropout)	VGG16	VGG16(dropout)
Sampling	0.015±0.01	0.089±0.01	0.016±0.01	0.097±0.01
Laplace	0.0198	0.0985	0.0194	0.0942
Train Loss	0.0093	1.1571	0.0085	1.6577
Test Loss	7.0481	3.2072	6.4007	2.9007
Loss Gap	7.0388	2.0501	6.3922	1.2430
Top-1 Train Acc	0.9953	0.7088	0.9953	0.5949
Top-1 Test Acc	0.2738	0.3694	0.3116	0.3908
Top-1 Acc Gap	0.7215	0.3394	0.6837	0.2041
Top-5 Train Acc	0.9999	0.8023	0.9999	0.8248
Top-5 Test Acc	0.5014	0.6170	0.5502	0.6444
Top-5 Acc Gap	0.4985	0.1853	0.4497	0.1804

Table 9: Weight Volume on VGG Networks (ImageNet-32, weight decay = 0.0005).

Method	VGG11	VGG11(dropout)	VGG16	VGG16(dropout)
Sampling	0.021±0.01	0.097±0.01	0.019±0.01	0.091±0.01
Laplace	0.0268	0.0877	0.0284	0.0891
Train Loss	0.7344	2.3641	0.6708	2.6208
Test Loss	4.8745	3.2244	4.6388	3.0396
Loss Gap	4.1410	0.8603	3.9680	0.4188
Top-1 Train Acc	0.9926	0.5312	0.9932	0.4849
Top-1 Test Acc	0.3265	0.4033	0.3732	0.4266
Top-1 Acc Gap	0.6661	0.1279	0.6200	0.0583
Top-5 Train Acc	0.9999	0.7839	0.9999	0.7419
Top-5 Test Acc	0.5691	0.6531	0.6145	0.6777
Top-5 Acc Gap	0.4308	0.1308	0.3854	0.0642

Table 10: Weight volume on VGG networks (weight decay = 0).

Method	VGG11	VGG11(dropout)	VGG16	VGG16(dropout)
Sampling	0.06±0.02	0.13±0.02	0.05±0.02	0.12±0.02
Laplace	0.0568	0.1523	0.0475	0.1397
Train Loss	0.0083	0.0806	0.0203	0.3002
Test Loss	0.8113	0.6021	0.8901	0.5998
Loss Gap	0.8030	0.5215	0.8698	0.2996
Train Acc	0.9973	0.9698	0.9933	0.8813
Test Acc	0.8563	0.8645	0.8435	0.8401
Acc Gap	0.1410	0.1053	0.1498	0.0412
Sampling	0.07±0.02	0.14±0.02	0.06±0.02	0.14±0.02
Laplace	0.0537	0.1578	0.0409	0.1620
Train Loss	0.0187	0.2608	0.0706	1.0324
Test Loss	3.1395	2.4244	3.8247	2.3038
Loss Gap	3.1208	2.1635	3.7541	1.2714
Train Acc	0.9943	0.9274	0.9912	0.6398
Test Acc	0.5764	0.5911	0.4867	0.5188
Acc Gap	0.4179	0.3363	0.5045	0.1210

K EMBEDDING DROPOUT NOISE η^{do} TO COVARIANCE MATRIX Σ_l^{do}

For Laplace approximation (Section 4), the standard dropout, as a noise term in $a_l^{\text{do}} = (\mathbf{1} + \eta_l^{\text{do}}) \odot a_l$, can be framed into the posterior estimation via Hessian matrices in Equation (9).

L SUPPLEMENTARY FOR SECTION 5.1

As Table 4 shows, on the ImageNet-32, dropout still leads to persistent, and significant, increase on the weight volume, across all three models. At the same time, the generalization error is reduced.

Table 11: Weight volume on VGG networks (weight decay = 0.0005).

	Method	VGG11	VGG11(dropout)	VGG16	VGG16(dropout)
CIFAR-10	Sampling	0.05±0.02	0.13±0.02	0.05±0.02	0.13±0.02
	Laplace	0.0512	0.1427	0.0433	0.1346
	Train Loss	0.2166	0.2984	0.1739	0.2438
	Test Loss	0.6368	0.5997	0.5346	0.4788
	Loss Gap	0.4202	0.3013	0.3607	0.2350
	Train Acc	0.9940	0.9801	0.9958	0.9878
	Test Acc	0.9048	0.9118	0.9234	0.9340
	Acc Gap	0.0892	0.0683	0.0724	0.0538
	Sampling	0.05±0.02	0.15±0.02	0.06±0.02	0.15±0.02
	Laplace	0.0496	0.1469	0.0413	0.1659
CIFAR-100	Train Loss	0.4389	0.7612	0.5403	0.8890
	Test Loss	2.4366	2.3672	2.3149	2.1516
	Loss Gap	1.9977	1.6060	1.7746	1.2626
	Train Acc	0.9976	0.9654	0.9889	0.9133
	Test Acc	0.6511	0.6765	0.6980	0.6970
	Acc Gap	0.3465	0.2889	0.2909	0.2163

In addition, we show the VGG network structures in Tables 5 to 7, and also demonstrate the details (including training loss, training accuracy, test loss, test accuracy) of the VGG experiments on ImageNet-32 (Tables 8 and 9) and CIFAR-10/100 (Tables 10 and 11). All models for CIFAR-10/100 are trained for 140 epochs using SGD with momentum 0.9, batch size 128, weight decay 0 or 5×10^{-4} , and an initial learning rate of 0.1 that is divided by 2 after every 20 epochs. All models for ImageNet-32 are trained for 100 epochs using SGD with momentum 0.9, batch size 1024, weight decay 0 or 5×10^{-4} , and an initial learning rate of 0.1 that is divided by 2 for each 20 epochs, and learning rate of 0.0005 after 50th epoch.

All results in Tables 8 to 11 also suggest that dropout can expand the weight volume and narrow generalization gap.

M DETAILS OF EXPERIMENTS IN SECTION 5.2

M.1 EXPERIMENTAL SETTINGS FOR SECTION 5.2

We consider both VGG-like models, with dropout rate= $\{0.0, 0.15, 0.30\}$, parameterized over $\Omega_{\text{VGG}} = \{\text{batch size} = \{64, 256\}, \text{initial learning rate} = \{0.1, 0.03\},^1 \text{depth} = \{11, 16, 19\}, \text{activation function} = \{\text{ReLU}, \text{tanh}\}, \text{weight decay} = \{0.0, 0.0005\}, \text{width} = \{1.0, 0.5\}^2\}$, and AlexNet-like models, parameterized over Ω_{Alex} , which has the same parameters except that depth= $\{7, 9, 10\}$. Therefore, either VGG or AlexNet has $2 * 2 * 3 * 2 * 2 * 2 * 3 = 288$ configurations. Let Ψ be the set of configurations.

Formally, we use a normalized mutual information to quantify the relation between random variables V_{co} and V_{pa} with $\text{pa} \in \Omega \cup \{\text{GE}\}$, where ‘co’ denotes complexity measure and ‘GE’ generalization error. For example, V_{depth} is the random variable for network depth.

Given a set of models, we have their associated hyper-parameter or generalization gap $\{\text{pa}(f_{\Theta, \psi}) | \psi \in \Psi\}$, and their respective values of the complexity measure $\{\text{co}(f_{\Theta, \psi}) | \psi \in \Psi\}$. Let $V_{\text{co}}(\psi_i, \psi_j) \triangleq \text{sign}(\text{co}(f_{\Theta, \psi_i}) - \text{co}(f_{\Theta, \psi_j}))$, $V_{\text{pa}}(\psi_i, \psi_j) \triangleq \text{sign}(\text{pa}(f_{\Theta, \psi_i}) - \text{pa}(f_{\Theta, \psi_j}))$. We can compute their joint probability $p(V_{\text{co}}, V_{\text{pa}})$ and marginal probabilities $p(V_{\text{co}})$ and $p(V_{\text{pa}})$. The mutual information between V_{co} and V_{pa} can be computed as

$$I(V_{\text{co}}, V_{\text{pa}}) = \sum_{V_{\text{co}}} \sum_{V_{\text{pa}}} p(V_{\text{co}}, V_{\text{pa}}) \log \frac{p(V_{\text{co}}, V_{\text{pa}})}{p(V_{\text{co}})p(V_{\text{pa}})}, \quad \hat{I}(V_{\text{co}}, V_{\text{pa}}) = \frac{I(V_{\text{co}}, V_{\text{pa}})}{H(V_{\text{pa}})}, \quad (24)$$

where $I(V_{\text{co}}, V_{\text{pa}})$ can be further normalized as $\hat{I}(V_{\text{co}}, V_{\text{pa}})$ to enable a fair comparison between complexity measures, $H(\cdot)$ is the marginal entropy. For the generalization gap, we consider not only $\hat{I}(V_{\text{co}}, V_{\text{GE}})$, but also the mutual information with some of the hyper-parameters fixed, i.e., $\mathbb{E}_{\omega \subset \Omega}(\hat{I}(V_{\text{co}}, V_{\text{GE}} | \omega))$, for the cases of $|\omega| = 0, 1, 2$. Note that, when $|\omega| = 0$, it is the same as $\hat{I}(V_{\text{co}}, V_{\text{GE}})$. Intuitively, $\mathbb{E}_{\omega \subset \Omega}(\hat{I}(V_{\text{co}}, V_{\text{GE}} | \omega))$ with $|\omega| = 2$ is the expected value of $\hat{I}(V_{\text{co}}, V_{\text{GE}})$

¹The learning rate decays 50% per 20 epochs.

²For VGG-like models, width = 1 means the model has 64, 128, 256, 512, 512 channels in its structure, while width = 0.5 means that the model has 32, 64, 128, 256, 256 channels in its structure.

Table 12: Mutual Information of Complexity Measures on CIFAR-100.

Complexity Measure	Dropout	VGG		
		$\mathbb{G}\mathbb{G}(\omega =2)$	$\mathbb{G}\mathbb{G}(\omega =1)$	$\mathbb{G}\mathbb{G}(\omega =0)$
Frob Distance	0.0128	0.0172	0.0068	0.0001
Spectral Norm	0.0109	0.0237	0.0141	0.0074
Parameter Norm	0.0122	0.0168	0.0086	0.0042
Path Norm	0.0370	0.0155	0.0025	0.0009
Sharpness α'	0.0333	0.0342	0.0164	0.0030
PAC-Sharpness	0.0390	0.0346	0.0166	0.0019
PAC-S(Laplace)	0.6225	0.1439	0.1256	0.1083
PAC-S(Sampling)	0.5364	0.1001	0.0852	0.0787

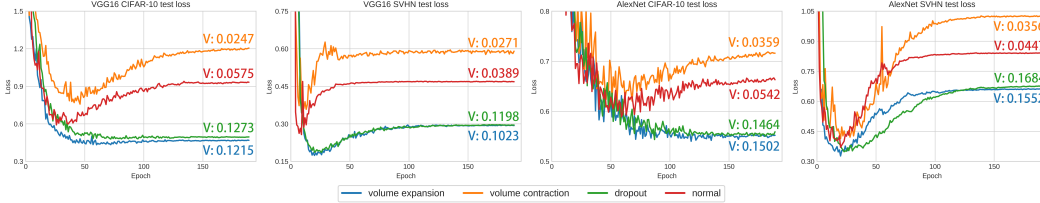


Figure 7: **Disentanglement noise v.s. dropout.** We train 2 VGG16 networks (**Left**) and 2 AlexNet (**Right**) on CIFAR-10 and SVHN respectively, with normal training, dropout training, disentanglement noise training (volume expansion) and stochastic noise training (volume contraction). For each dataset, we present their test losses in different plots.

when 2 hyper-parameters in Ω are fixed. Note that, as we aim to study the relationship between dropout and generalization, we only compute $\mathbb{E}_{\omega \subset \Omega}(\hat{I}(V_{\text{co}}, V_{\text{GE}}|\omega))$ with $|\omega| = 0, 1, 2$ and $\hat{I}(V_{\text{co}}, V_{\text{dropout}})$ for all complexity measures.

M.2 COMPLEXITY MEASURES

In the following, we show the details of complexity measures.

Frobenius (Frob) Distance and Parameter Norm (Dziugaite & Roy, 2017; Nagarajan & Kolter, 2019; Neyshabur et al., 2018b):

$$\text{co}_{\text{Frob}}(f_W) = \sum_l \|W_l^F - W_l^0\|_F^2. \quad (25)$$

$$\text{co}_{\text{Para}}(f_W) = \sum_l \|W_l^F\|_F^2. \quad (26)$$

Spectral Norm (Yoshida & Miyato, 2017):

$$\text{co}_{\text{Spec}}(f_W) = \sum_l \|W_l^F - W_l^0\|_2^2. \quad (27)$$

Path Norm: Path-norm was introduced in (Neyshabur et al., 2015b) as a scale invariant complexity measure for generalization and is shown to be a useful geometry for optimization (Neyshabur et al., 2015a). To calculate path-norm, we square the parameters of the network, do a forward pass on an all-ones input and then take square root of sum of the network outputs. We define the following measures based on the path-norm:

$$\text{co}_{\text{Path}}(f_W) = \sum_l f_{W^2}(1), \quad (28)$$

where $W^2 = W \circ W$ is the element-wise square operation on the parameters.

Sharpness-based PAC-Bayes:

$$\text{co}_{\text{PAC-S}}(f_W) = \sum_l \frac{\|W_l^F - W_l^0\|_F^2}{2\sigma_l^2}, \quad (29)$$

where σ is estimated by sharpness method. That is, let $\text{vec}(U') \sim \mathcal{N}(\mu_{U'}, \sigma'^2 I)$ be a sample from a zero mean Gaussian, where σ is chosen to be the largest number such that $\max_{\sigma' \leq \sigma} |\mathcal{L}(f_{W+U'}) - \mathcal{L}(f_W)| \leq \epsilon$ (Keskar et al., 2017; Pitas et al., 2017; Neyshabur et al., 2017; Jiang et al., 2020b).

PAC-Bayes with Weight Volume:

$$\text{cOPAC-S(Laplace/Sampling)}(f_W) = \sum_l \left[\frac{\|W_l^F - W_l^0\|_F^2}{2\sigma_l^2} + \ln \frac{1}{\text{vol}(W_l)} \right], \quad (30)$$

where $\text{vol}(W_l)$ is estimated by Laplace approximation (**PAC-S(Laplace)**) and sampling method (**PAC-S(Sampling)**).

M.3 SUPPLEMENTARY FOR SECTION 5.2

As Table 12 shows, for all cases concerning the generalization error on CIFAR-100 (VGG), i.e., $|\omega|=0,1,2$, PAC-S(Laplace) or PAC-S(Sampling) is still a clear winner and is also closely correlated with dropout.

N SUPPLEMENTARY FOR EXPERIMENT 5.3

As Figure 7 shows, on the CIFAR-10 and SVHN, weight volume expansion improves generalization performance, similar to dropout. This is in contrast to volume contraction, which leads to worse generalization performance.

O EXPERIMENTS ON TEXT CLASSIFICATION

Table 13: Text classification for THUCNews .

Method	FastText	FastText(dropout)	TextRNN	TextRNN(dropout)	TextCNN	TextCNN(dropout)
Sampling	0.04±0.02	0.08±0.02	0.03±0.02	0.06±0.02	0.05±0.02	0.09±0.02
Laplace	0.0366	0.0831	0.0126	0.0458	0.0453	0.0850
Train Loss	0.01	0.08	0.04	0.07	0.02	0.04
Test Loss	0.66	0.25	0.46	0.29	0.61	0.42
Loss Gap	0.65	0.17	0.42	0.22	0.59	0.38
Train Acc	0.9958	0.9844	0.9841	0.9751	0.9944	0.9899
Test Acc	0.9011	0.9217	0.9037	0.9102	0.9022	0.9129
Acc Gap	0.0947	0.0627	0.0804	0.0649	0.0922	0.0770

To make our empirical results more robust, we also implement FastText (Bojanowski et al., 2017; Joulin et al., 2016; 2017), TextRNN (Liu et al., 2016) and TextCNN (Kim, 2014) to classify THUC-News data set (Sun et al., 2016) (180000 training data, 10000 validation data, 10000 test data) with and without dropout. The results of these text classification tasks in Table 13 also indicate that dropout noise can narrow generalization gap and expand the weight volume.

P FUTURE WORK

In this paper, we introduce ‘weight expansion’, an intriguing phenomenon that appears whenever dropout is applied during training. We have provided both theoretical and empirical arguments, which show that weight expansion is one of the key indicators of the reduced generalization error, and that dropout is effective to obtain weight expansion.

For the next steps, we believe the following few directions are worthy of exploration and research.

- First, at the moment, we consider weights as a vector, without taking into consideration the structural information that the weights can be closely coupled according to the structures of the layers. It is interesting to know whether or not weight volume may capture some structural information of network (*e.g.*, convolutional layer).
- Second, it will be useful to develop more PAC-Bayesian optimization methods (Dziugaite & Roy, 2017; Letarte et al., 2019; Pérez-Ortiz et al., 2021b) to help expand weight volume.

While the methods in the paper have been shown effective and efficient, they are by no means optimal. It is not hard to see that such optimization problem is highly intractable, so an optimal solution may not be practical. Nevertheless, we believe there are rooms for improvement, and any progress in this direction will be significant for not only the problem in this paper but also other problems that may involve PAC-Bayesian optimization.

- Third, activation functions have been argued to have significant impact on not only the trained models but also the training process, related to the first point, it is interesting to understand how weight volume is related to activation functions (*e.g.*, ReLU, tanh).
- Last but not least, it can be a significant topic to study whether the weight volume – when combined with the PAC-Bayesian adversarial generalization bound (Farnia et al., 2018) – can provide any guidance to the hot topic of adversarial generalization.