

SEMDEDUP: DATA-EFFICIENT LEARNING AT WEB-SCALE THROUGH SEMANTIC DEDUPLICATION

Amro Abbas¹ Kushal Tirumala^{1*} Dániel Simig^{1*} Surya Ganguli² Ari S. Morcos^{1*}
¹Meta AI (FAIR) ²Department of Applied Physics, Stanford University

ABSTRACT

Progress in machine learning has been driven in large part by massive increases in data. However, large web-scale datasets such as LAION are largely uncurated beyond searches for exact duplicates, potentially leaving much redundancy. Here, we introduce SemDeDup, a method which leverages embeddings from pre-trained models to identify and remove “semantic duplicates”: data pairs which are semantically similar, but not exactly identical. Removing semantic duplicates preserves performance and speeds up learning. Analyzing a subset of LAION, we show that SemDeDup can remove 50% of the data with minimal performance loss, effectively halving training time. Moreover, performance increases out of distribution. Also, analyzing language models trained on C4, a partially curated dataset, we show that SemDeDup improves over prior approaches while providing efficiency gains. SemDeDup provides an example of how simple ways of leveraging quality embeddings can be used to make models learn faster with less data.

1 INTRODUCTION

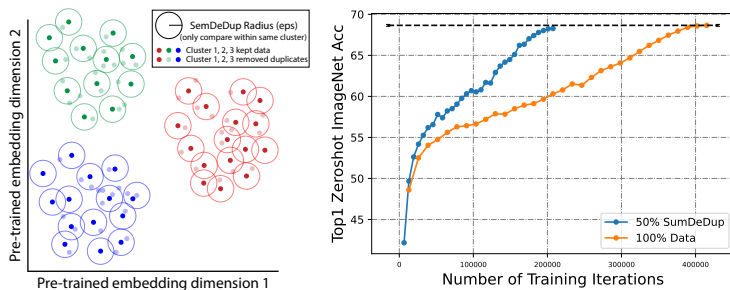


Figure 1: **Data efficiency from semantic deduplication (SemDeDup) (left)**: A schematic of the SemDeDup algorithm which efficiently removes semantic duplicates from web-scale data. **(right)**: When SemDeDup removes 50% of the LAION-440M dataset, training on this semantically *nonredundant* subset achieves almost the *same* performance as training on the *entire* 440M dataset. Also, training speed is *twice* as fast and completes in *half* the time.

A primary driver of recent success in machine learning has been the rise of self-supervised learning (SSL) scaled to ever larger models and unlabelled datasets (Hestness et al., 2017; Kaplan et al., 2020; Henighan et al., 2020; Rosenfeld et al., 2020; Gordon et al., 2021; Hernandez et al., 2021; Zhai et al., 2021; Hoffmann et al., 2022). In particular, modern large datasets are often derived at global web-scale and are generally unfiltered, with the exception of NSFW filters. One such public dataset is LAION (Schuhmann et al., 2022b), a multi-modal dataset of 5 billion image/text pairs. Multi-modal models such as CLIP (Radford et al., 2021b) are trained for many epochs on these large datasets achieving impressive performance, but at the cost of extremely long training durations.

The critical role of large datasets has led to increasing interest in scaling laws which enable us to predict how model performance changes given more data and/or parameters, leading to the

*Equal Contribution. Correspondence to: Amro Abbas amroabbas@meta.com, Ari Morcos arimorcos@meta.com

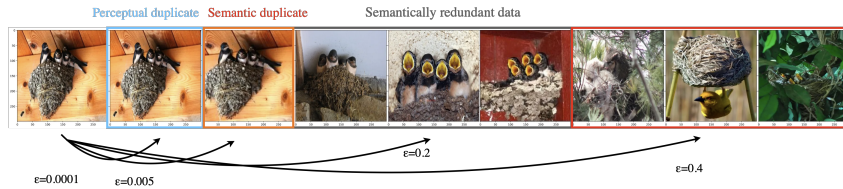


Figure 2: **Mapping cosine similarity to perceptual and semantic similarity.** We visualize pairs of images with cosine similarity $1 - \epsilon$ in the CLIP image encoder embedding space. The left most image is a random seed image from LAION, while the remaining images are sorted by their dissimilarity ϵ to the seed image. Roughly, as ϵ increases from left to right, we move from perceptual to semantic duplicates, while at large values of ϵ we see semantically redundant pairs. Note the red labelled “semantic duplicate” is a view of the original left-most seed image from a slightly different perspective. We visualize more examples in Figure A13.

observation that test error generally scales as a power law with respect to data quantity (Kaplan et al., 2020). Power law scaling, however, is unsustainable as diminishing marginal returns are quickly hit such that ever increasing amounts of data are required to achieve ever diminishing improvements in performance. Notably, many of these models appear never to converge, as test performance continues to increase even after 10s of passes through these massive datasets (Ilharco et al., 2021; Aghajanyan et al., 2023). This result suggests that our best models are underfitting, likely as a result of spending an increasing fraction of learning time focusing on redundant data.

Improving data efficiency is therefore quite impactful, either by enabling models to achieve the same performance much faster or to achieve better performance given the same computational budget. This has inspired recent work which suggests that by pruning data according to an intelligent criterion, power law scaling with respect to data can be beat and, given an optimal data ranking metric, exponential scaling might in principle be achieved (Sorscher et al., 2022). Recent explorations of this direction have shown promising results, with some works able to reduce data size by almost 5-fold with minimal performance loss (Radenovic et al., 2023).

Optimal approaches to select data might focus on one of several different classes of examples to be removed, roughly ordered by the complexity of their discovery:

1. **Perceptual duplicates:** We loosely define such data pairs to be perceptually identical to a typical human observer. These may be exact duplicates or inputs with slight, human imperceptible distortions.
2. **Semantic duplicates:** These are examples which contain largely identical information content, but remain perceptually distinct. For example, a pair of image views which are derived from the same image, but feature different margins, aspect ratios, or color distributions could be considered semantic duplicates. Such pairs would rarely, if ever, be detected by exact duplicate filters as they are far apart in pixel/token space.
3. **Semantically redundant data:** in contrast to semantic duplicates, semantically redundant data are not derived from the same underlying objects and would be clearly distinguishable to a human. However, the information contained in such examples may still contain substantial overlap. For example, consider the case of two different images of two different golden retrievers in two different parks. These images are neither perceptually nor semantically identical as the content of the images differ. Each additional semantically redundant data point will provide less and less new information, eventually converging to near-zero information gained from additional such data.
4. **Misleading data:** these are data which rather than providing zero information (as in the previous categories) provide negative or *harmful* signal, such that removing these data actually improves performance rather than having a neutral effect. While such data are easy to conceive of in supervised learning (i.e. mislabeled examples), it is much less clear what such examples may be in the context of self-supervised learning.

In this work, we focus on the category of semantic duplicates: data which are semantically highly similar but which would be difficult to discover using simple deduplication approaches. These data

points are challenging to identify because distance measures in input space are unlikely to uncover semantic duplicates. To overcome this limitation, we leverage pre-trained foundation models to compare data similarity in the learned embedding space rather than in input space. Comparing every data point to every other data point, however, is intractable, especially for web-scale datasets containing billions of examples. To make this computation possible, we use the clustering approach described in Sorscher et al. (2022) to segment the embedding space, allowing us to only search for duplicate pairs within a cluster. Using this approach, we make the following contributions:

- We propose SemDeDup (Fig. 1, left), a simple, yet effective and computationally tractable way to identify semantic duplicates. Using this approach, we show that large web-scale datasets such as LAION contain large numbers of semantic duplicates, with 50% of examples containing at least one semantic duplicate.
- Large fractions of semantic duplicates can be removed with little-to-no performance impact, greatly increasing training efficiency. We reduced the size of our LAION training set by 50% with minimal performance loss, achieving nearly the same performance 2x faster (Fig. 1, right), and moreover *improved* performance out-of-distribution.
- We apply SemDeDup to C4, beating prior SoTA deduplication, providing efficiency gains 10-15% for language model training, and sometimes even improving performance.

2 SEMDEDUP

Defining and identifying semantic duplicates While identifying perceptual duplicates can be easily done in input space, identifying semantic duplicates is more difficult as they may be distant in either pixel or token space. To identify these pairs, we leverage the embedding space of a large pre-trained foundation model to provide a more semantically meaningful distance metric. To detect and remove semantically similar images, we use the following semantic de-duplication (SemDeDup) algorithm (Fig. 1, left). First, we embed each data point using a foundation model (CLIP (Ilharco et al., 2021; Radford et al., 2021a) for images and OPT (Zhang et al., 2022) for language). We then cluster the embeddings into k clusters via k-means. Below, we choose $k = 50,000$ clusters in CLIP image encoder embeddings and $k = 11,000$ clusters in OPT-language model embeddings. Within each cluster, we compute all pairwise cosine similarities and set a threshold cosine similarity above which data pairs are considered semantic duplicates. Finally, from each group of semantic duplicates within a cluster, we keep the image with the lowest cosine similarity to the cluster centroid and remove the rest. We note that to determine duplicates, this method considers only the images and ignores the captions. A pseudo code for SemDeDup is shown in Algorithm A12 in the appendix. We provide more details about the method in addition to experiments on choosing the value of k in Appendix E.

3 SEMDEDUP ON LAION

We first show that the LAION dataset contains extreme amounts of semantic redundancy (Section 3.1) and provide examples of the semantic duplicates discovered by SemDeDup. Most critically, we demonstrate that removing the semantic duplicates discovered by SemDeDup has minimal to no impact on converged performance and increases learning speed (Section 3.2). In Appendix D we show that SemDeDup improves performance of language models over prior methods. We present an analysis of the method parameters in Appendix G as well.

3.1 EXTREME SEMANTIC REDUNDANCY AT WEB-SCALE

How many semantically redundant pairs are there in LAION? Remarkably, we find that even tiny thresholds ϵ lead SemDeDup to remove large fractions of data in LAION-440M (Fig. A1a), showing that LAION-440M contains large quantities of semantic duplicates. Surprisingly, 30% of images in LAION-440M have a semantic duplicate at the highly stringent distance threshold of $\epsilon = 0.00095$, while 50% have a duplicate at the tight threshold of $\epsilon = 0.124$ (Fig. A1b). Moreover, a histogram of pairwise cosine similarity in LAION-440M (Fig. A1c) reveals a high density of pairs at high cosine similarity, including a large contribution at 1, reflecting highly similar semantic duplicates. These results demonstrate that LAION-440M contains large amounts of semantic redundancy.

What do semantic duplicates look like? In Fig. 2, we show examples of semantic duplicates found at different thresholds ϵ . At extremely low values of ϵ we find perceptual duplicates, and at slightly higher values of ϵ , we find semantic duplicates, which are the same image but with distortions which evade exact de-duplication approaches such as different margins, crops, aspect ratios, and color filters, or slightly different peripheral details. Fig. A14, and A15 show examples of clusters that are semantically deduplicated at increasing levels of ϵ , clearly indicating more semantic diversity in deduplicated clusters as ϵ increases.

3.2 TRAINING ON SEMANTICALLY DEDUPLICATED DATA IMPROVES EFFICIENCY

If SemDeDup is effective at finding semantic duplicates, we should be able to remove these duplicates with minimal performance impact. To test this, we train CLIP models on subsets of LAION-440M deduplicated at different thresholds ϵ . As ϵ rises, we retain a smaller fraction of data. In Fig. 3 (a), we plot the top-1 zero-shot accuracy of our CLIP models on ImageNet-1k. Encouragingly, we found that SemDeDup can remove up to 37% of LAION-440M with no performance drop, and 50% with minimal performance drop ($< 0.5\%$). In contrast, randomly removing data results in much larger drops. In Fig. 3 (b), we show the average zero-shot performance across 25 tasks, finding that on average, performance increased on de-duplicated data. See Table A2 for detailed performance on all 24 tasks at 6 deduplication thresholds as well as 1 baseline and 4 random controls. See also Fig. A4 for performance on 24 individual tasks.

We also evaluated out-of-distribution robustness on 6 datasets commonly used for this task: ImageNet-A, ImageNet-O (Hendrycks et al., 2021b), Imagenet-R (Hendrycks et al., 2021a), Imagenet-sketch (Wang et al., 2019), ImageNetV2 (Recht et al., 2019), and ObjectNet (Barbu et al., 2019). We again found that SemDeDup *increased* performance when *removing* 37% of the data, and matched performance when 50% was removed as shown in Fig. 3 (c). See Table A3 for detailed performance on 6 OOD tasks at 6 deduplication thresholds as well as 1 baseline and 4 random controls. See also Fig. A5 for performance on the 6 individual tasks. We emphasize that SemDeDup achieves these results on LAION-440M, an already highly curated dataset derived from LAION-2B which was found to have similar performance despite the almost five-fold reduction in data (Radenovic et al., 2023). However, to ensure that this curated subset did not bias our results, we also evaluated on LAION-233M, an uncurated subset of LAION-2B, finding qualitatively similar results (Fig. A6).

Because SemDeDup reduces the number of training points, it enables substantially faster training. In Fig. 3 (d), we plot the top-1 zero-shot accuracy on ImageNet-1k as a function of the number of iterations for different deduplication thresholds ϵ . Notably, models trained on deduplicated data reach convergence in substantially fewer iterations

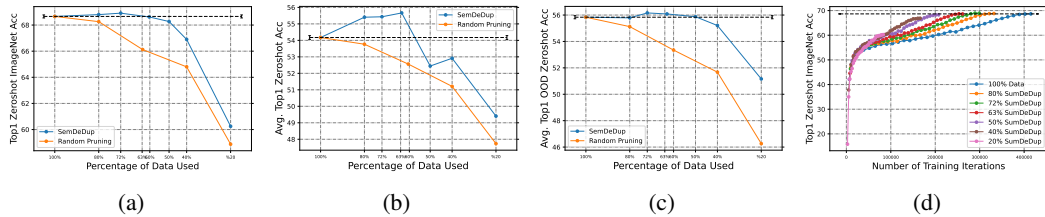


Figure 3: SemDeDup allows better average zero-shot accuracy across 30 tasks with less data and faster pre-training. (a): Down to using only 50% of LAION-440M for pre-training CLIP, we are able match the zero-shot ImageNet accuracy of the baseline model trained on 100% of the data (black dashed line) with a small drop of 0.38% only, while we outperform the baseline model with only 63% of data. (b): Average zero-shot performance for CLIP measured on 24 datasets *improves* down to 63% of the pre-training data, yielding *better* performance with almost $1.6\times$ *faster* pre-training. (c): Zeroshot validation accuracy averaged over 6 ImageNet-1k OOD datasets. (d): We track zeroshot ImageNet-1K performance as a function of LAION-440M pre-training iterations at different deduplication thresholds. With SemDeDup, models converge in far less iterations. The black dashed line corresponds to the average performance over 4 different training seeds for a baseline model trained on 100% of the data. The error bars indicate the standard deviation (std) of performance.

Discussion: we introduced SemDeDup, a simple yet tractable and effective method which leverages pre-trained embeddings to remove semantic duplicates which are highly semantically similar but not identical. Removing semantic duplicates improves learning speed and out-of-distribution performance while providing efficiency gains of up to 50% on the largely uncurated LAION and 15% on the partially curated C4. SemDeDup demonstrates the importance of data quality and the potential of data curation to dramatically improve training efficiency.

REFERENCES

- Armen Aghajanyan, Lili Yu, Alexis Conneau, Wei-Ning Hsu, Karen Hambardzumyan, Susan Zhang, Stephen Roller, Naman Goyal, Omer Levy, and Luke Zettlemoyer. Scaling laws for generative mixed-modal language models, 2023. URL <https://arxiv.org/abs/2301.03728>.
- Andrei Barbu, David Mayo, Julian Alverio, William Luo, Christopher Wang, Dan Gutfreund, Josh Tenenbaum, and Boris Katz. Objectnet: A large-scale bias-controlled dataset for pushing the limits of object recognition models. In H. Wallach, H. Larochelle, A. Beygelzimer, F. d'Alché-Buc, E. Fox, and R. Garnett (eds.), *Advances in Neural Information Processing Systems*, volume 32. Curran Associates, Inc., 2019. URL <https://proceedings.neurips.cc/paper/2019/file/97af07a14cacba681feacf3012730892-Paper.pdf>.
- Alexey Dosovitskiy, Lucas Beyer, Alexander Kolesnikov, Dirk Weissenborn, Xiaohua Zhai, Thomas Unterthiner, Mostafa Dehghani, Matthias Minderer, Georg Heigold, Sylvain Gelly, et al. An image is worth 16x16 words: Transformers for image recognition at scale. *arXiv preprint arXiv:2010.11929*, 2020.
- Mitchell A Gordon, Kevin Duh, and Jared Kaplan. Data and parameter scaling laws for neural machine translation. In *Proceedings of the 2021 Conference on Empirical Methods in Natural Language Processing*, pp. 5915–5922, Online and Punta Cana, Dominican Republic, November 2021. Association for Computational Linguistics.
- Dan Hendrycks, Steven Basart, Norman Mu, Saurav Kadavath, Frank Wang, Evan Dorundo, Rahul Desai, Tyler Zhu, Samyak Parajuli, Mike Guo, Dawn Song, Jacob Steinhardt, and Justin Gilmer. The many faces of robustness: A critical analysis of out-of-distribution generalization. *ICCV*, 2021a.
- Dan Hendrycks, Kevin Zhao, Steven Basart, Jacob Steinhardt, and Dawn Song. Natural adversarial examples. *CVPR*, 2021b.
- Tom Henighan, Jared Kaplan, Mor Katz, Mark Chen, Christopher Hesse, Jacob Jackson, Heewoo Jun, Tom B Brown, Prafulla Dhariwal, Scott Gray, et al. Scaling laws for autoregressive generative modeling. *arXiv preprint arXiv:2010.14701*, 2020.
- Danny Hernandez, Jared Kaplan, Tom Henighan, and Sam McCandlish. Scaling laws for transfer. *arXiv preprint arXiv:2102.01293*, 2021.
- Joel Hestness, Sharan Narang, Newsha Ardalani, Gregory Diamos, Heewoo Jun, Hassan Kianinejad, Md Patwary, Mostofa Ali, Yang Yang, and Yanqi Zhou. Deep learning scaling is predictable, empirically. *arXiv preprint arXiv:1712.00409*, 2017.
- Jordan Hoffmann, Sebastian Borgeaud, Arthur Mensch, Elena Buchatskaya, Trevor Cai, Eliza Rutherford, Diego de Las Casas, Lisa Anne Hendricks, Johannes Welbl, Aidan Clark, Tom Hennigan, Eric Noland, Katie Millican, George van den Driessche, Bogdan Damoc, Aurelia Guy, Simon Osindero, Karen Simonyan, Erich Elsen, Jack W. Rae, Oriol Vinyals, and Laurent Sifre. Training compute-optimal large language models, 2022. URL <https://arxiv.org/abs/2203.15556>.
- Gabriel Ilharco, Mitchell Wortsman, Ross Wightman, Cade Gordon, Nicholas Carlini, Rohan Taori, Achal Dave, Vaishaal Shankar, Hongseok Namkoong, John Miller, Hannaneh Hajishirzi, Ali Farhadi, and Ludwig Schmidt. Openclip, July 2021. URL <https://doi.org/10.5281/zenodo.5143773>. If you use this software, please cite it as below.
- Srinivasan Iyer, Xi Victoria Lin, Ramakanth Pasunuru, Todor Mihaylov, Daniel Simig, Ping Yu, Kurt Shuster, Tianlu Wang, Qing Liu, Punit Singh Koura, Xian Li, Brian O’Horo, Gabriel Pereyra, Jeff Wang, Christopher Dewan, Asli Celikyilmaz, Luke Zettlemoyer, and Ves Stoyanov. Opt-impl: Scaling language model instruction meta learning through the lens of generalization, 2022. URL <https://arxiv.org/abs/2212.12017>.
- Jared Kaplan, Sam McCandlish, Tom Henighan, Tom B Brown, Benjamin Chess, Rewon Child, Scott Gray, Alec Radford, Jeffrey Wu, and Dario Amodei. Scaling laws for neural language models. *arXiv preprint arXiv:2001.08361*, 2020.

- Katherine Lee, Daphne Ippolito, Andrew Nystrom, Chiyuan Zhang, Douglas Eck, Chris Callison-Burch, and Nicholas Carlini. Deduplicating training data makes language models better, 2021a. URL <https://arxiv.org/abs/2107.06499>.
- Katherine Lee, Daphne Ippolito, Andrew Nystrom, Chiyuan Zhang, Douglas Eck, Chris Callison-Burch, and Nicholas Carlini. Deduplicating training data makes language models better. *arXiv preprint arXiv:2107.06499*, 2021b.
- Ilya Loshchilov and Frank Hutter. Decoupled weight decay regularization. *arXiv preprint arXiv:1711.05101*, 2017.
- Filip Radenovic, Abhimanyu Dubey, Abhishek Kadian, Todor Mihaylov, Simon Vandenhende, Yash Patel, Yi Wen, Vignesh Ramanathan, and Dhruv Mahajan. Filtering, distillation, and hard negatives for vision-language pre-training. *arXiv preprint arXiv:2301.02280*, 2023.
- Alec Radford, Jong Wook Kim, Chris Hallacy, Aditya Ramesh, Gabriel Goh, Sandhini Agarwal, Girish Sastry, Amanda Askell, Pamela Mishkin, Jack Clark, et al. Learning transferable visual models from natural language supervision. In *International conference on machine learning*, pp. 8748–8763. PMLR, 2021a.
- Alec Radford, Jong Wook Kim, Chris Hallacy, Aditya Ramesh, Gabriel Goh, Sandhini Agarwal, Girish Sastry, Amanda Askell, Pamela Mishkin, Jack Clark, et al. Learning transferable visual models from natural language supervision. In *International Conference on Machine Learning*, pp. 8748–8763. PMLR, 2021b.
- Colin Raffel, Noam Shazeer, Adam Roberts, Katherine Lee, Sharan Narang, Michael Matena, Yanqi Zhou, Wei Li, and Peter J. Liu. Exploring the limits of transfer learning with a unified text-to-text transformer, 2019. URL <https://arxiv.org/abs/1910.10683>.
- Benjamin Recht, Rebecca Roelofs, Ludwig Schmidt, and Vaishaal Shankar. Do ImageNet classifiers generalize to ImageNet? In Kamalika Chaudhuri and Ruslan Salakhutdinov (eds.), *Proceedings of the 36th International Conference on Machine Learning*, volume 97 of *Proceedings of Machine Learning Research*, pp. 5389–5400. PMLR, 09–15 Jun 2019. URL <https://proceedings.mlr.press/v97/recht19a.html>.
- Jonathan S. Rosenfeld, Amir Rosenfeld, Yonatan Belinkov, and Nir Shavit. A constructive prediction of the generalization error across scales. *International Conference on Learning Representations*, 2020. URL <https://openreview.net/forum?id=ryenvpEKDr>.
- Christoph Schuhmann, Richard Vencu, Romain Beaumont, Robert Kaczmarczyk, Clayton Mullis, Aarush Katta, Theo Coombes, Jenia Jitsev, and Aran Komatsuzaki. Laion-400m: Open dataset of clip-filtered 400 million image-text pairs. *arXiv preprint arXiv:2111.02114*, 2021.
- Christoph Schuhmann, Romain Beaumont, Richard Vencu, Cade Gordon, Ross Wightman, Mehdi Cherti, Theo Coombes, Aarush Katta, Clayton Mullis, Mitchell Wortsman, et al. Laion-5b: An open large-scale dataset for training next generation image-text models. *arXiv preprint arXiv:2210.08402*, 2022a.
- Christoph Schuhmann, Romain Beaumont, Richard Vencu, Cade Gordon, Ross Wightman, Mehdi Cherti, Theo Coombes, Aarush Katta, Clayton Mullis, Mitchell Wortsman, et al. Laion-5b: An open large-scale dataset for training next generation image-text models. *arXiv preprint arXiv:2210.08402*, 2022b.
- Ben Sorscher, Robert Geirhos, Shashank Shekhar, Surya Ganguli, and Ari S Morcos. Beyond neural scaling laws: beating power law scaling via data pruning. In *Neural Information Processing Systems (NeurIPS)*, June 2022.
- Ashish Vaswani, Noam Shazeer, Niki Parmar, Jakob Uszkoreit, Llion Jones, Aidan N Gomez, Łukasz Kaiser, and Illia Polosukhin. Attention is all you need. *Advances in neural information processing systems*, 30, 2017.
- Haohan Wang, Songwei Ge, Zachary Lipton, and Eric P Xing. Learning robust global representations by penalizing local predictive power. In *Advances in Neural Information Processing Systems*, pp. 10506–10518, 2019.

Xiaohua Zhai, Alexander Kolesnikov, Neil Houlsby, and Lucas Beyer. Scaling vision transformers. *arXiv preprint arXiv:2106.04560*, 2021.

Susan Zhang, Stephen Roller, Naman Goyal, Mikel Artetxe, Moya Chen, Shuohui Chen, Christopher Dewan, Mona Diab, Xian Li, Xi Victoria Lin, Todor Mihaylov, Myle Ott, Sam Shleifer, Kurt Shuster, Daniel Simig, Punit Singh Koura, Anjali Sridhar, Tianlu Wang, and Luke Zettlemoyer. Opt: Open pre-trained transformer language models, 2022. URL <https://arxiv.org/abs/2205.01068>.

A DATASETS AND TRAINING FOR CLIP

The LAION dataset. To train large-scale multi-modal models, we used the LAION dataset (Schuhmann et al., 2022a), an open multi-modal dataset containing up to 5 billion image-text pairs scraped from the web. LAION data were filtered using a pre-trained CLIP model to only retain image-text pairs with an embedding similarity greater than 0.28. Image-text pairs containing very short captions or small images were also removed. A simple de-duplication method based on the image url was also performed.

The majority of our experiments were performed on the LAION-440M filtered subset of LAION-2B introduced by (Radenovic et al., 2023). This dataset was filtered using a Complexity, Action, and Text (CAT) filtering according to three criteria: (1) high enough caption **complexity**; (2) the caption must contain an **action**; (3) any **text** present in the image cannot substantially overlap with the caption.

To ensure this CAT filtered LAION-440M subset did not impact our results, we also performed experiments on unfiltered data derived from LAION. Much of the original LAION-400M subset (Schuhmann et al., 2021) is no longer available due to broken urls, so we used a reduced version of the LAION-400M subset containing the 233 million data points we were able to collect, which we call LAION-233M.

CLIP training. For CLIP training on LAION, we use the OpenCLIP implementation (Ilharco et al., 2021). We use CLIP-ViT-Base-16 in all our experiments. The model has Vision Transformer Base (ViT-B-16) (Dosovitskiy et al., 2020) as an image encoder and Text Transformer (Vaswani et al., 2017) as a text encoder. We train all models with a global batch size of 33k image-caption pairs and fix the number of training epochs to 32 regardless of the dataset size. This results in training for a fewer number of iterations when training on deduplicated data, thereby achieving efficiency gains. We train with AdamW (Loshchilov & Hutter, 2017) and cosine learning rate schedule with warmup. The same peak learning rate of 5×10^{-4} is used for all models. Table A1 shows training parameters we use for CLIP.

CLIP Evaluation For CLIP evaluation, we conduct zeroshot evaluation on 30 distinct datasets, of which six are designated for assessing out-of-distribution (OOD) robustness. Tables A2 and A3 in the Appendix list all the datasets we use for evaluation.

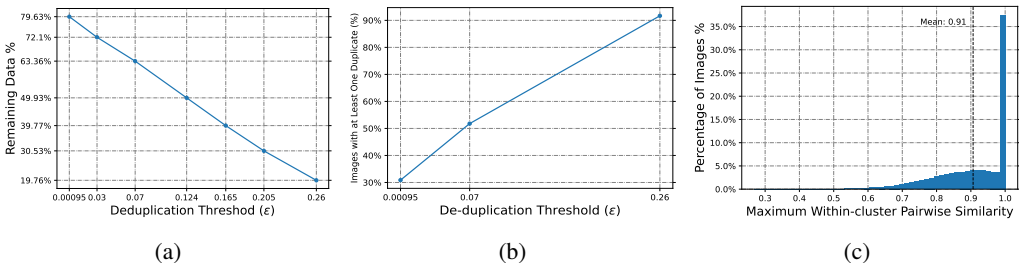


Figure A1: **Extreme semantic redundancy in LAION-440M.** (a) Fraction of data remaining as a function of deduplication threshold ϵ for LAION-440M. (b) Percentage of images in LAION-440M with at least one semantic duplicate as a function of ϵ . (c) Histogram of the number of within-cluster image pairs in LAION-440M at a given cosine similarity.

B CLIP ZEROSHOT EVALUATION RESULT

In this section, we show the result of zeroshot evaluation for CLIP. We note that the models trained on dataset deduplicated using SemDeDup outperform the baseline model in many tasks. In Table A2 we list the top1 zeroshot accuracy on 24 tasks and in Table A3 we show the top1 zeroshot accuracy on 6 datasets for out-of-distribution robustness evaluation. Our complete evaluation set has 30 different datasets in total. When using only 63% of LAION-440M, SemDeDup outperforms the baseline

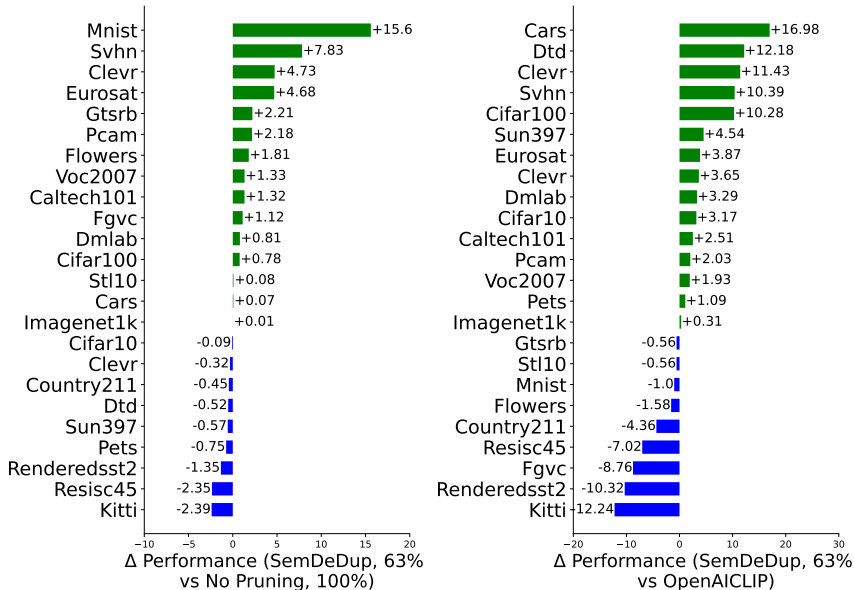


Figure A2: **SemDeDup improves zeroshot and OOD performance in many tasks with less pre-training.** A comparison of zeroshot evaluation performance between our CLIP model trained on 63% of LAION-440M after de-duplication to a baseline CLIP model trained on 100% of the data (**left**), and OpenAI CLIP (Radford et al., 2021a) (**right**) on 30 tasks. The green bars show when SemDeDup outperforms the baseline model.

Table A1: Training parameters for CLIP

Parameter	Value
Model	CLIP ViT-B-16
Warmup	2000
Epochs	32
Batch size	33,792
Learning rate	5.0e-4, cosine scheduler
Optimizer	AdamW, wd=0.2, betas=(0.9, 0.98), eps=1.0e-6

model in 19 out of the 30 tasks. Fig. (A4) and Fig. (A5) show the performance of different models as a function of training dataset size.

C LAION-233M DE-DUPLICATION

To support our results on LAION-440M, we also de-duplicate a much smaller dataset of 233 million images. We call this dataset LAION-233M. Usually, CLIP needs to be trained on more than 400 million image-caption pairs as introduced in (Radford et al., 2021a), so de-duplicating LAION-233M is more challenging in this respect. We train a baseline model on the 233 million image-caption pairs and two models on 55% of the data, one on a random subset and the other on deduplicated subset using SemDeDup. We trained all the models using the same hyperparameters we used for training on LAION-440M. We show ImageNet top1 zeroshot accuracy for these models in Fig. A6. The baseline model achieved 64.62% accuracy, while the SemDeDup model achieved 63.61% outperforming the model trained on the random subset (61.3% accuracy).

Table A2: **Zeroshot evaluation** top1 accuracy on different datasets. Training CLIP on 72% of the data after deduplication gives a higher performance than training on 100% of the data in 19/24 datasets. In the first row, model names are represented by the pruning method (Dedup, Baseline, and Rand for SemDeDup, no pruning, and random pruning respectively), and the fraction of data used for training. For the Baseline100 model we report the average performance across 4 training seeds.

Data / Model	Dedup20	Dedup40	Dedup50	Dedup63	Dedup72	Dedup80	Baseline100	Rand80	Rand60	Rand40	Rand20
Cars	63.33	78.14	80.26	81.43	82.05	82.61	81.37	80.96	79.26	77.74	71.57
Country211	14.16	17.74	18.26	18.44	18.70	18.20	18.88	18.39	16.75	15.97	12.88
Fgvc Aircraft	4.44	11.49	12.42	15.42	15.27	15.09	14.30	14.31	13.11	9.27	8.85
GTSRB	38.22	37.20	36.22	43.06	41.00	35.74	40.85	43.33	41.88	25.72	32.28
Imagenet1k	60.24	66.90	68.27	68.66	68.93	68.80	68.65	68.29	66.12	64.82	58.86
MNIST	44.29	31.87	22.93	48.55	42.75	48.86	32.95	43.82	35.73	36.32	19.22
Renderedsst2	51.46	53.65	52.72	50.80	52.99	57.17	52.14	52.72	51.29	52.22	45.47
STL10	96.06	96.85	97.50	97.71	97.69	97.21	97.63	97.49	97.38	97.08	94.31
SUN397	64.81	67.98	68.26	68.89	69.25	69.76	69.46	69.08	67.96	65.51	60.76
VOC2007	77.94	79.51	79.74	80.37	79.75	78.61	79.04	77.97	79.43	77.96	74.42
Caltech101	83.05	84.40	84.98	85.06	84.35	84.75	83.74	83.69	83.93	83.38	80.62
CIFAR100	72.09	75.71	75.17	77.19	77.16	77.08	76.41	76.02	74.08	72.37	67.79
CIFAR10	92.80	93.78	94.01	94.00	94.49	94.13	94.09	94.25	93.95	92.68	89.14
Clevr Dist	15.75	23.05	15.75	19.48	21.95	21.82	19.80	18.45	15.59	18.60	16.21
Clevr Count	25.37	26.36	30.85	31.87	34.73	20.31	27.14	15.37	26.43	14.85	21.67
DMLAB	13.16	17.62	17.99	19.20	18.52	20.23	18.39	18.50	21.05	17.12	19.36
DTD	49.73	53.51	54.31	56.76	58.94	57.66	57.27	57.02	53.35	50.96	41.76
Eurosat	44.07	51.28	51.70	59.46	57.02	59.72	54.78	59.81	48.63	51.26	50.00
Flowers	45.21	62.21	67.67	69.78	70.48	66.29	67.97	68.39	65.43	62.42	58.16
Kitti Dist	20.39	13.36	14.35	14.77	19.97	26.72	17.16	11.11	20.68	17.02	11.25
PCAM	49.69	48.83	47.62	52.66	50.09	52.14	50.48	50.11	41.28	55.02	56.59
Pets	77.87	87.30	89.72	90.02	90.16	90.57	90.77	90.49	89.86	88.72	82.50
Resisc45	46.76	57.56	51.69	51.49	50.14	53.57	53.84	54.06	51.65	49.29	46.72
SVHN	34.80	33.64	26.24	40.87	33.96	32.68	33.04	26.77	26.67	32.70	25.26
Average	49.4	52.91	52.44	55.66	55.43	55.41	54.17 ±0.65	53.77	52.56	51.21	47.73

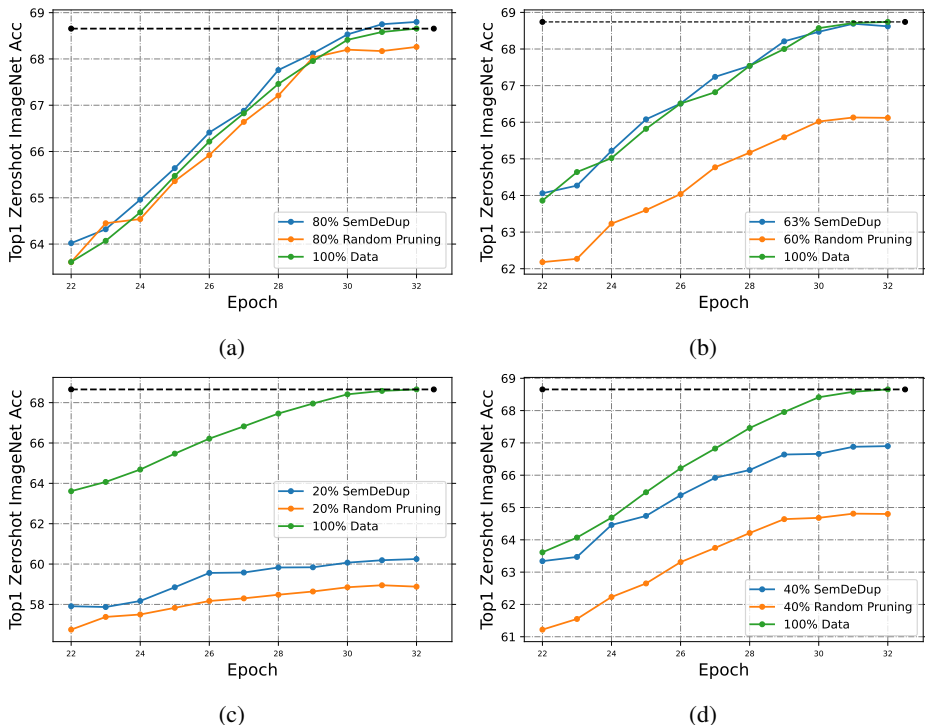


Figure A3: SemDeDup is always better than training on random subset from LAION-440M. The plots show zeroshot top1 accuracy on ImageNet for CLIP models trained on different fractions of data.

D SEMDEDUP ON NATURAL LANGUAGE

D.1 METHODS

We train language models on deduplicated versions of the C4 dataset (Raffel et al., 2019). Since pre-training large language models on the entire C4 corpus is beyond our compute budget, we train on subsets of this data whose sizes are compute optimal given model size as per (Hoffmann et al., 2022). We use the OPT model and training configurations (Zhang et al., 2022) to train 125M and 1.3B parameter models (see Table 1 in (Zhang et al., 2022) for full specifications). We use the original number of warmup updates but adjust the learning rate schedule such that all training runs anneal learning rate to 0 by the end of the training — this allows for fair comparisons of model performances across different dataset sizes. For 1.3B model size experiments, we increase the number of warmup updates to 5550 and reduce the peak learning rate to 6×10^{-5} to stabilize training.

We evaluate our trained language models on two independent validation sets: the validation text corpora used by OPT (Zhang et al., 2022) (referred to as "opt_valid") and a random sample of the instruction finetuning corpus used to train the OPT-IML family of models (Iyer et al., 2022), composed of verbalized prompts corresponding to a wide range of NLP tasks and their solutions (referred to as "prompts_with_answers").

To perform SemDeDup, we pass documents through the open-sourced pre-trained 125M OPT model (Zhang et al., 2022) and save the last layer embedding for the last token in the document. We then apply the same method described in Section E.1 with $\mathcal{K} = 11000$ to cluster these embeddings. We compare to random pruning and the NearDup method described in (Lee et al., 2021b). Note that the deduplication threshold values associated with different fractions of data remaining change compared to LAION-440M, as seen in Fig. A21.

Table A3: **Out-of-distribution Robustness** for CLIP models we trained on a different number of examples. The two models trained on 63% and 72% of LAION440M with our de-duplication method have higher average accuracy over 6 datasets. In the first column, model names are represented by the pruning method (Dedup, Baseline, and Rand for SemDeDup, no pruning, and random pruning respectively), and the fraction of data used for training. For the Baseline100 model we report the average performance across 4 training seeds.

Model/ Dataset	ImageNet- A	ImageNet- O	ImageNet- R	ImageNet- Sketch	ImageNet- V2	Object- Net	Average
Dedup20	31.35	52.25	72.69	46.98	52.71	51.0	51.16
Dedup40	38.73	49.3	77.08	51.93	59.21	54.98	55.21
Dedup50	39.68	48.55	77.74	53.54	60.37	55.36	55.87
Dedup63	39.07	48.45	78.24	53.86	60.56	56.33	56.08
Dedup72	39.53	47.6	78.61	53.7	61.23	56.28	56.16
Dedup80	39.12	47.95	78.53	53.82	60.59	54.72	55.79
Base- line100	38.56	47.59	78.65	53.81	60.96	55.44	55.84 ±0.12
Rand80	37.87	47.7	78.04	52.81	60.02	54.3	55.12
Rand60	34.6	47.5	75.61	51.18	57.97	53.22	53.35
Rand40	31.88	49.1	73.65	49.02	56.83	49.57	51.67
Rand20	23.43	49.4	66.74	43.76	50.67	43.57	46.26

D.2 RESULTS ON LANGUAGE MODELING

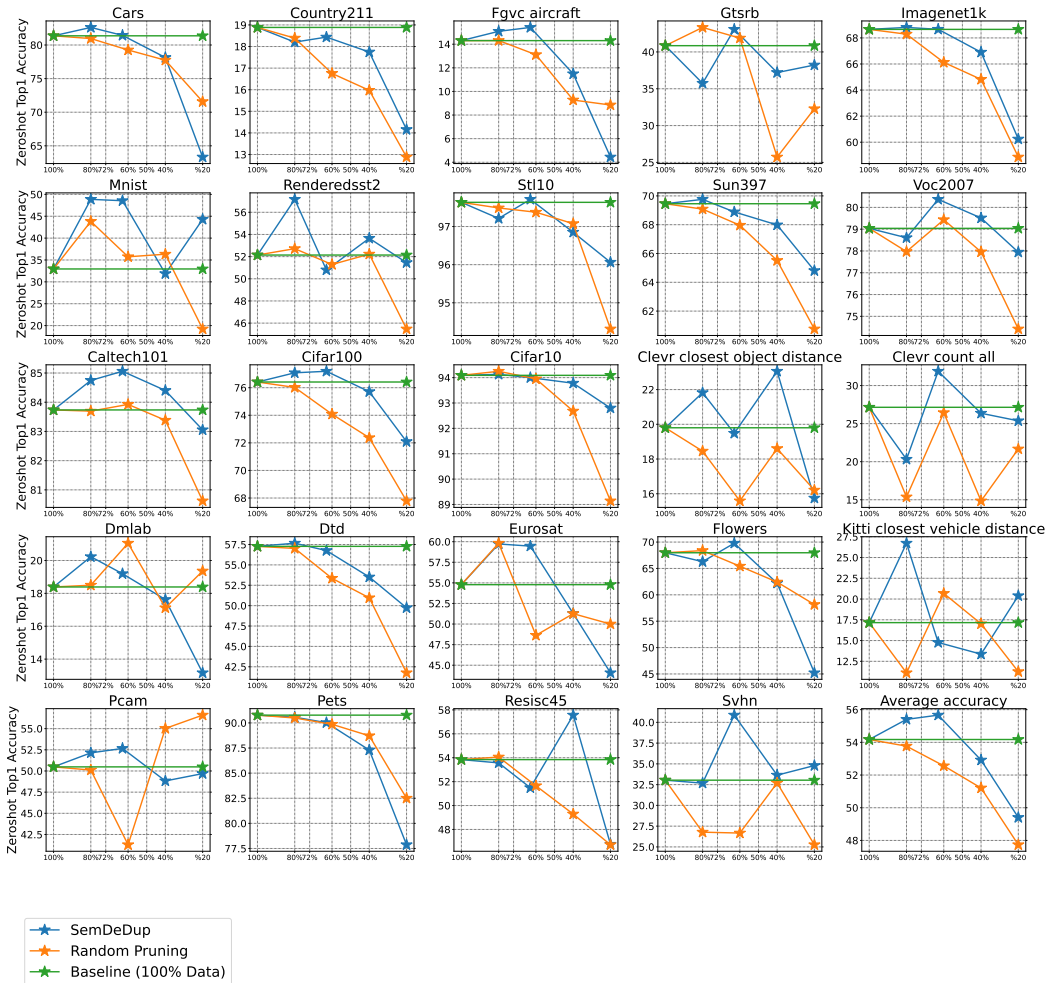
In Fig. A7, we show the performance of SemDeDup versus random pruning. We observe that SemDeDup significantly outperforms random pruning as measured by perplexity on prompts.with.answers and average opt_valid performance. For a breakdown of performance on individual validation sets in opt_valid, see Fig. A24 where we observe that SemDeDup beats random pruning on every single validation set in opt_valid.

Training on less data for one epoch naturally causes performance to decrease. Thus, we also explore whether continuing to train on the same smaller pruned datasets for more epochs will match the performance of a baseline model trained on a larger dataset. In Fig. A8, we train on datasets pruned with SemDeDup, but perform the same number of total training steps as the baseline model on the larger dataset (which was trained for 1 epoch). This causes the model to do multiple epochs over the pruned dataset. We observe that by training for multiple epochs over significantly pruned datasets we can reach the performance of a single-epoch run on the full dataset using 10-15% less compute. This is similar to the finding in Section 3.2. Notably, this efficiency gain is larger at higher pruning percentages, indicating that more aggressive pruning can yield more efficiency gains. This trend generally holds across the individual validation sets in opt_valid (see Fig. A25).

On the C4 validation set, we observe that SemDeDup still outperforms random pruning in Fig. A22. In Table A16 we compare SemDeDup to the NearDup baseline from (Lee et al., 2021a). We observe that NearDup and SemDeDup have comparable performance as is expected, because with 4% pruning there is very little change to the underlying dataset.

D.3 WHAT IS BEING PRUNED IN LANGUAGE DATA?

In Fig. A26 and Fig. A27 we choose specific clusters and show a random sample of documents retained in the cluster after performing SemDeDup for different values of ϵ . In Fig. A26, we observe that at low values of ϵ , we find semantic duplicates in the form of templated text, where typically few words (e.g. a geographic location or a name) is changed. This successfully evades exact-string deduplication methods but contains highly redundant information as seen in Fig. A26. In Fig. A27,



Zero-shot Top1 Accuracy

Figure A4: Zero-shot performance of CLIP on 24 datasets. The last plot shows the average performance over all datasets.

we show an example of a cluster with semantically redundant duplicates — most examples in this cluster are advertisements about Nike shoes. These examples are not necessarily templated text or have exact string matches, but are highly redundant nonetheless. We see in Fig. A27 that at more aggressive pruning (i.e. higher ϵ) these semantically redundant duplicates get pruned. We note that exact string duplicates (i.e. “perceptual duplicates for text”) are rare since duplicate occurrences of any three-sentence spans were removed in C4 already.

E ANALYSIS OF HYPERPARAMETER CHOICES

E.1 NUMBER OF K-MEANS CLUSTERS FOR SEMDEDUP

Clustering to reduce computation The time complexity of naive de-duplication is $\mathcal{O}(n^2)$ where n is the number of data points, making this approach impractical for large web-scale data. For example, the LAION-440M dataset would require $\approx 1.9 \times 10^{17}$ similarity computations. The k-means clustering step in SemDeDup reduces this complexity substantially from $\mathcal{O}(n^2)$ to $\mathcal{O}(n^2/k)$

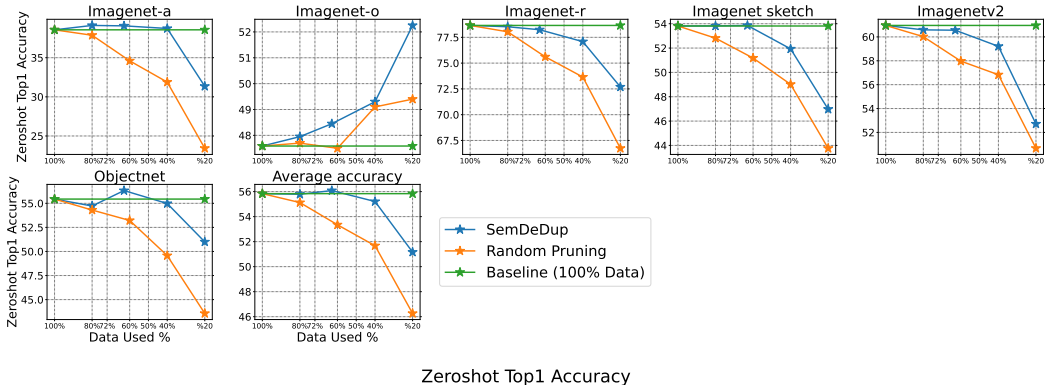


Figure A5: Out-of-distribution zeroshot performance on 6 datasets. SemDeDup outperforms random pruning on all datasets for all fractions of dataset kept. The last plot shows the average performance over all datasets.

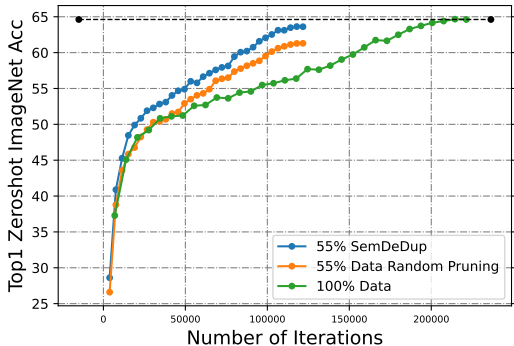


Figure A6: Performance when deduplicating 233 million images from LAION-2B. We deduplicate LAION233M to 55% of its size and train CLIP model on it. SemDeDup performs better than random pruning (63.61% vs 61.3%). Training on the whole 233 million examples gives 64.62%. Note that the deduplicated dataset size here is 128 million only.

assuming approximately uniform cluster size¹. This means we only require $\approx 4.6 \times 10^{12}$ intra-cluster comparisons instead of $\approx 1.9 \times 10^{17}$ across all pairs, a 5-order of magnitude improvement. Here we study the impact of changing the number of clusters k in the k-means clustering step in SemDeDup described in section 2. In all our experiments in the main paper, we set $k = 50,000$ for the LAION dataset and $k = 11,000$ for the C4 dataset. To study the impact of k on the performance, we deduplicate LAION-440M using different values for k and train different CLIP models on the deduplicated data. We compare three values for k (70,000, 50,000, and 10,000) when deduplicating LAION-440M to 40% of its size. As we see in Table A4 the exact choice of k has a very small impact on performance as measured by the zeroshot accuracy on ImageNet with a small improvement in the top1 accuracy as k increases.

The key intuition is that the choice of k implements a tradeoff in the probability of recovering all semantic duplicates of any data point, and the computational complexity of doing so. For example, assuming k-means finds equal cluster sizes, each data point will lie in a cluster of size N/k , and we are only searching for ϵ -nearest neighbors (with cosine similarity $\geq 1 - \epsilon$) within each cluster. As k decreases, cluster size N/k increases, and the error probability of substantially many ϵ nearest neighbors of a data point lying outside its own cluster decreases, while the computational complexity of searching for all nearest neighbors within the cluster increases. As long as k is small enough

¹Note that our choice of k depends on n , it is not a constant in the context of this complexity analysis.

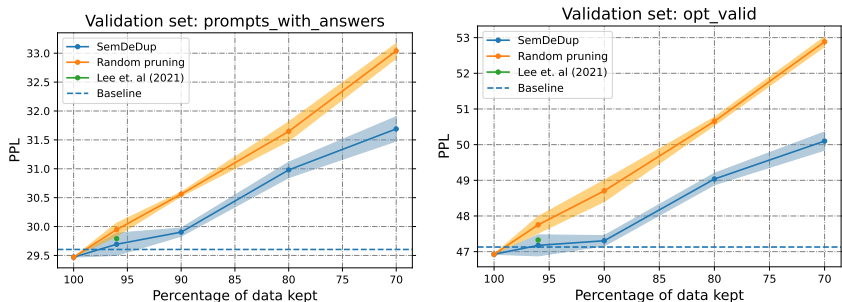


Figure A7: **SemDeDup applied to C4.** The x-axis corresponds to different percents of data kept, and the y-axis represents the perplexity on validation sets described in Section D.1 (lower is better). Each point is a separate 125M model trained on one-pass of its respective pruned dataset (mean and standard deviation across 3 random training seeds). The green point represents a 125M model trained on a version of C4 deduplicated via the NearDup method (Lee et al., 2021a). Note that NearDup (the single green point) keeps 96.1% of the data. SemDeDup can match this baseline performance while keeping only 80% of the data (see Table A17 for numerical comparison).

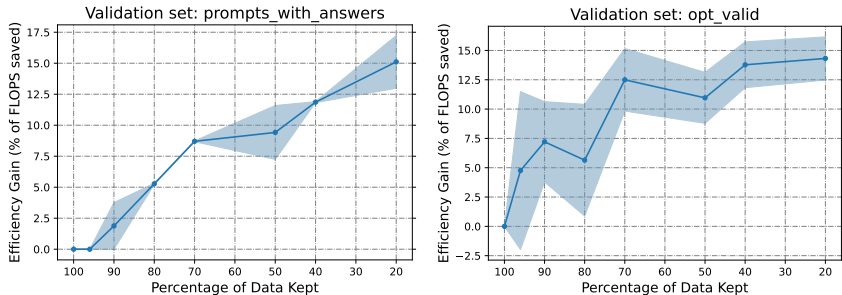


Figure A8: **SemDeDup allows compute efficiency gains by training on much smaller datasets for slightly longer.** We prune datasets via SemDeDup and continue training past one epoch until we reach baseline model perplexity. The x-axis is the percentage of data kept, and the y-axis is the percentage of FLOPs saved. For example, training on the 80% pruned dataset reaches baseline model perplexity on prompts_with_answer in 95.0% of the baseline training, saving 5.0% compute. Mean and standard deviation provided across 3 random training seeds.

relative to the total dataset size N , so that N/k is large enough to contain most nearest neighbors of each data point, the performance of SemDeDup should be robust to the choice of k .

E.2 PRE-TRAINED MODELS FOR EXTRACTING EMBEDDINGS

Utilizing pre-trained foundation Models: Our method makes use of pre-trained foundation models to embed data examples. Considering that there are many of these ready-to-use pre-trained models available to the public, we can use embeddings from these models to guide curation of other datasets. Pre-trained models like Vision Transformers (Dosovitskiy et al., 2020) for vision tasks, OPT (Zhang

Table A4: Performance of CLIP when keeping 40% of LAION-440M as a function of the number of k-means clusters k used for SemDeDup. SemDeDup is robust to the choice of k and the impact on the zeroshot accuracy on ImageNet is small with slight performance improvement as we increase k .

Metric / Num. of Clusters	70K Clusters	50K Clusters	10K Clusters
Top1 zeroshot IN Acc.	67.11	66.90	66.56
Top5 zeroshot IN Acc.	90.96	90.74	91.04

Table A5: The impact of the foundation model used for extracting embeddings. Using a foundation model pre-trained on a different (and private) dataset has no impact on the performance. The table shows the performance when training OpenCLIP on 40% of LAION-440M dataset. In each column in the table, the dataset is deduplicated by SemDeDup using embeddings from a different model.

Metric / Model Used for Extracting Embeddings	CLIP Pre-trained on LAION440M	OpenAI CLIP (Radford et al., 2021a) Pre-trained on Private 400M dataset
Top1 zeroshot IN Acc. After Training on DeDup. Data	66.90	66.96
Top5 zeroshot IN Acc. After Training on DeDup. Data	90.74	90.80

Table A6: Different strategies to choose the example to keep from each group of duplicates.

Metric / Examples to Keep	Examples with low similarity to centroids	Random examples	Examples with high similarity to centroids
Top1 zeroshot IN Acc.	66.90	66.90	66.73
Top5 zeroshot IN Acc.	90.74	90.95	90.82

et al., 2022) for natural language and CLIP (Radford et al., 2021a) for vision-language data have been used widely. Here we show that one can effectively use an on-the-shelf model pre-trained on one dataset to prune another dataset resulting in a considerable training cost saving.

As we describe in section 2, SemDeDup clusters the example embeddings extracted from a pre-trained foundation model and uses them for deduplication. To study the effect of the pre-training dataset of the foundation model on SemDeDup we deduplicate LAION-440M using an OpenAI CLIP model (Radford et al., 2021a) pre-trained on a different dataset than LAION. We use the OpenAI CLIP ViT-Base-16 model pre-trained on a private dataset of 400 million image-caption pairs. We use the embeddings from this model to deduplicate LAION-440M dataset to 40% of its size. As we see in Table A5, using Open AI CLIP model for extracting embeddings has a negligible impact on the performance.

E.3 DIFFERENT STRATEGIES FOR CHOOSING WHICH SEMANTIC DUPLICATES TO KEEP

In section 2 and Algorithm A12, we describe the steps for deduplication with SemDeDup. From each group of duplicates (the circles in Figure 1), we keep the example with the lowest cosine similarity to the cluster centroid in the embedding space. This is the default setting for all experiments we run unless otherwise mentioned. In Table A6 we study the strategy we follow to choose the example to keep from each group of duplicates. We train three CLIP models on 40% of LAION-440M deduplicated by SemDeDup for 32 epochs. We try three options for choosing the examples we keep 1) keeping examples with *low* similarity to centroids, 2) keeping *random* examples, and 3) keeping examples with *high* similarity to cluster centroids. We observe that the difference between the three methods in zero-shot accuracy on ImageNet is negligible.

E.4 TRAINING ON DEDUPLICATED DATA FOR MORE ITERATIONS IMPROVES PERFORMANCE

Training on deduplicated data comes with the advantage that we train for fewer iterations when training for the same number of epochs. For example, training on 50% of LAION-440M for the same number of epochs as the baseline model (100% of the data) means that we train for only 50% of the number of training iterations. We find that we can achieve a good trade-off between performance and training speed when training on deduplicated data. We show that training on deduplicated LAION-440M for more iterations improves the accuracy while still being below the number of iterations we train the baseline model for. In Table A7, we show results for different CLIP models, trained on 50% of LAION-440M, for a different number of training iterations. We see that by continuing training the model until we reach 75% of the iterations relative to the baseline model, we outperform the

Table A7: By training on only 50% of LAION440M, deduplicated using SemDeDup, we perform better than training on whole LAION440M (baseline100) with 62.5% or 75% of the number of training iterations used for training the baseline model. The table shows zeroshot Top1 accuracy.

Model / Metric	IN Acc	Avg. Acc (24 datasets)	Avg. OOD (6 datasets)
100% data, 100% iters (Baseline100)	68.65 \pm 0.10	54.17 \pm 0.65	55.84 \pm 0.12
50% data, 50% iters	68.27	52.44	55.87
50% data, 62.5% iters	68.33	55.07	56.38
50% data, 75% iters	69.21	55.07	56.36

baseline model on not only ImageNet, but also on average accuracy over 24 datasets, and on the 6 out-of-distribution datasets.

E.5 CHOOSING THE DEDUPLICATION THRESHOLD ϵ

We tune the deduplication threshold ϵ for each dataset manually to get the desired deduplicated dataset size. To do that, we first run the clustering step of SemDeDup. Then we sample 10% of the clusters and tune ϵ on them. We found that using only 10% of clusters gives a good approximation of the final dataset size. We notice that the relationship between ϵ and the deduplicated dataset size is semi-linear for both LAION and C4 datasets (see Fig. A1, A10, and A21). When tuning ϵ we start with two values and run SemDeDup on 10% of the clusters (the time needed for this step is a few minutes. See the DeDup. Time column in Table A10). Then we linearly interpolate the two values of ϵ knowing their correspondence deduplicated dataset size and the target dataset size to get a better value for ϵ . In Fig. A10 we plot the duplicated dataset size as a function of ϵ for different values of the number of clusters k used. We show that k has a small impact on the value ϵ only when the duplicated dataset size is less than 50%.

F COMPUTE COST OF RUNNING SEMDEDUP

We report in Table A8 the cost of running SemDeDup on LAION440M in GPU hours. We see in the table that the overhead of deduplicating LAION440M doesn't exceed 1% of the training cost in GPU hours. This results in substantial savings in the overall cost after deduplication. For example, training on 50% of the data saves 50% of the training cost while requiring only 1% of the training cost for deduplication. We also show in Table A10 the time needed for deduplicating LAION440M dataset using SemDeDup. Our implementation for SemDeDup parallelizes the operations across devices to speed up the deduplication. Table Table A10 also shows how the deduplication time changes as we change the number of clusters.

However, we should note that the computational cost of SemDeDup can be amortized across the efficiency gains it can generate in training many downstream models by many other groups. For example, its typical use case would be to take a large web-scaled dataset, and semantically deduplicate it *once*, resulting in a much smaller *foundation dataset* (Sorscher et al., 2022) that can be widely disseminated to the community. Then many different groups can train many different foundation models on this deduplicated foundation dataset, and all these groups will reap the training efficiency gains conferred by a less redundant smaller dataset. Thus the computational cost of finding the dataset can be amortized across the efficiency gains achieved on many downstream training runs, in direct analogy to how the computational cost of training a foundation model can be amortized across the computational efficiency gains with which it achieves high zero-shot or fine-tuning performance on many downstream applications.

Table A8: SemDeDup requires much fewer GPU hours than training a CLIP ViT-B-16 model on LAION440M for one epoch. When using 50K clusters, it requires only 0.29 of the GPU hours needed for one epoch of training on 100% of the data. This is equivalent to 0.0091 of the complete training cost in GPU hours.

Num. SemDeDup Clusters / Cost	GPU Hours For Training CLIP on 100% of LAION440M for 32 Epochs	GPU Hours For Training on 50% of DeDup. Data	SemDeDup Overhead in GPU Hours	SemDeDup Overhead / 1 Epoch Training GPU Hours	SemDeDup Overhead / 32 Epochs Training GPU Hours
10K Clusters	11541	5770.5	163.5	0.43	0.0132
25K Clusters	11541	5770.5	101.2	0.26	0.0082
50K Clusters	11541	5770.5	110.3	0.29	0.0091
70K Clusters	11541	5770.5	103.6	0.27	0.0084

G ADDITIONAL ANALYSIS

G.1 NUMBER OF K-MEANS CLUSTERS FOR SEMDEDUP

To further assess the impact of changing the value of k we measure the intersection between datasets deduplicated by SemDeDup using different values for k . Let $D_A = \{a_1, a_2, \dots, a_N\}$ and $D_B = \{b_1, b_2, \dots, b_N\}$ be two datasets of the same size N . We define the percentage of intersection I between D_A and D_B in equation 1 as the percentage of data points that appear in both datasets relative to the dataset size N . Note that $I(D_A, D_A) = 100\%$.

We find that deduplicating LAION-440M dataset to 72% of its size using any value of k values (10000, 25000, 50000, 70000) results in almost the same dataset with only 3% of the examples replaced when changing k . This is induced by the 97% percentage of intersection I value between any pair of datasets deduplicated using two different values for k . We show in Fig. A9 the percentage of intersection ratio between different datasets when changing the number of clusters k at different deduplication thresholds ϵ .

We also show in figure A10 that by using the same deduplication threshold value ϵ we get almost the same deduplicated dataset size for different values for k .

$$I(D_A, D_B) = 100 * \frac{|D_A \cap D_B|}{N} \tag{1}$$

G.2 ESTIMATING THE FRACTION OF DUPLICATES DETECTED BY SEMDEDUP

SemDeDup searches for duplicates within clusters. This results in reducing the floating point operations (FLOPs) required for deduplication by 5 order of magnitude for LAION-440M dataset as described in section E.1. Indeed, by searching for duplicates within clusters, we ignore duplicates across different clusters if they exist. Here we try to estimate the efficiency of SemDeDup in detecting all the duplicates in the dataset.

Let D_ϵ represent the total number of duplicates in the dataset at a specific value of deduplication threshold ϵ , and D_ϵ^s represent the total number of duplicates detected by SemDeDup. We define the deduplication efficiency η_ϵ (eq. 2) as the fraction of duplicates detected by SemDeDup from the total number of duplicates in the datasets at a specific value of ϵ . For example, a deduplication efficiency of 100% corresponds to detecting all the duplicates in a dataset. As computing the exact value of D_ϵ is computationally expensive, we approximate its value by the number of duplicates between the cluster items and its 20 nearest neighbor clusters and denote this approximated value by D'_ϵ . We sampled part (2000 clusters) of the LAION-440M dataset randomly and compute the value of the deduplication efficiency η in eq. 2 for different values of ϵ and k-means clusters k . As we see in

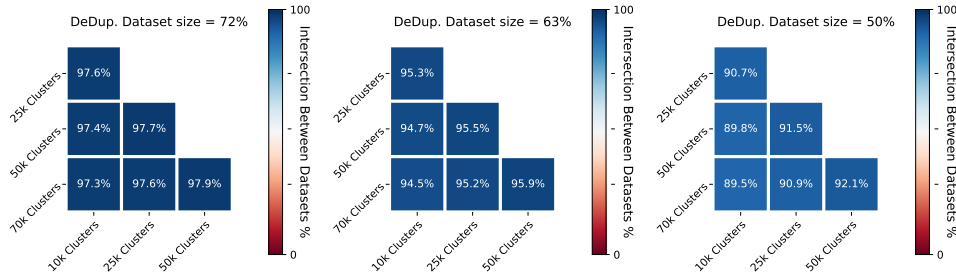


Figure A9: Intersection between different deduplicated LAION datasets using different values for the number of k-means clusters k . Each cell corresponds to the percentage of intersection between two datasets deduplicated using different k values. At the 72% dataset size, more than 97% of data examples are shared between all the datasets regardless of the value of k . This shows the robustness of SemDeDup to the number of clusters parameter k .

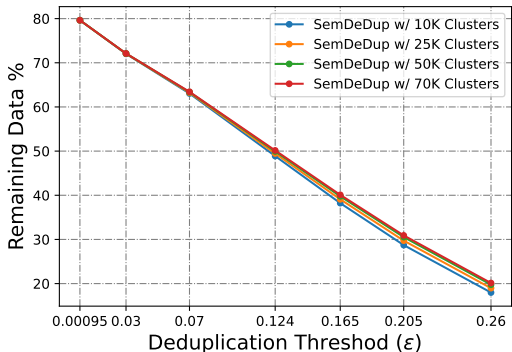


Figure A10: Deduplicated dataset size as a function of the deduplication threshold for different values of k-means clusters k . Note that the range in the resulting deduplicated dataset size is 0.003% when ϵ is 0.00095 and 2% when ϵ is 0.26.

Table A9, for $k=50,000$, SemDeDup can effectively detect more than 94% of the duplicates when keeping 63% of LAION-440M dataset and 89% of the duplicates when keeping 40%.

$$\eta = 100 * \frac{D_\epsilon^s}{D_\epsilon'} \tag{2}$$

Table A9: Percentage of duplicates detected (η) by SemDeDup at different deduplication thresholds (ϵ). We notice that η increases as we reduce the number of clusters k in the clustering step of SemDeDup.

Percentage of Data Kept	63%			50%			40%		
Num. of Clusters	70K	50K	10K	70K	50K	10K	70K	50K	10K
η	94.4	94.6	95.3	90.1	90.6	91.3	88.3	89.0	90.8

Table A10: Time for running SemDeDup on LAION440M. Note that we report the total time for deduplication to different dataset size ratios.

Operation / Time	Clustering Time	DeDup. Time	Total Time
SemDeDup w/10K Clusters	2h:36 @8 GPUs	2h:20 @64 GPUs	4h:56
SemDeDup w/25K Clusters	3h:52 @8 GPUs	1h:19 @64 GPUs	5h:11
SemDeDup w/50K Clusters	5h:59 @8 GPUs	1h:22 @64 GPUs	7h:21
SemDeDup w/70K Clusters	9h:02 @8 GPUs	1h:10 @64 GPUs	10h:12
Training CLIP on 100% of LAION440M for 32 Epochs	—	—	69h:52 @176 GPUs

Table A11: Performance after training on deduplicated data for the same number of iterations as training on 100% of the data.

Metric / Model	Dedup40	Dedup50	Dedup60	Dedup70	Baseline (100%)
Top1 IN Zeroshot Acc.	68.35	68.92	69.04	69.14	68.65 ±0.10
Top5 IN Zeroshot Acc.	91.64	91.82	91.86	91.73	91.46 ±0.04

Table A12

PyTorch-style Pseudo Code For SemDeDup

```

1 #Input: cluster_embeddings, num_clusters, epsilon
2
3 for i in range(num_clusters):
4     # Load cluster embeddings.
5     cluster_i_embeddings = cluster_embeddings[i]
6
7     # Sort the cluster embeddings by the distance to the cluster centroid.
8     cluster_i_embeddings = sort_by_distance_to_cluster_centroid(
9         cluster_i_embeddings, descending = True)
10
11     # We use descending=True/False for keeping examples with low/high
12     # similarity to cluster centroids. We ignore this step for keeping random
13     # examples from each group of similar examples. See Appendix E for more
14     # details about this step.
15
16     # Compute the pairwise cosine similarity between embeddings
17     pairwise_sim_matrix = cluster_i_embeddings @ cluster_i_embeddings.T
18
19     triu_sim_matrix = torch.triu(pairwise_sim_matrix, diagonal = 1)
20
21     M = torch.max(triu_sim_matrix, dim=0) [0]
22
23     # Check if the maximum similarity <= the threshold.
24     points_to_keep_from_cluster_i = M <= 1-epsilon

```

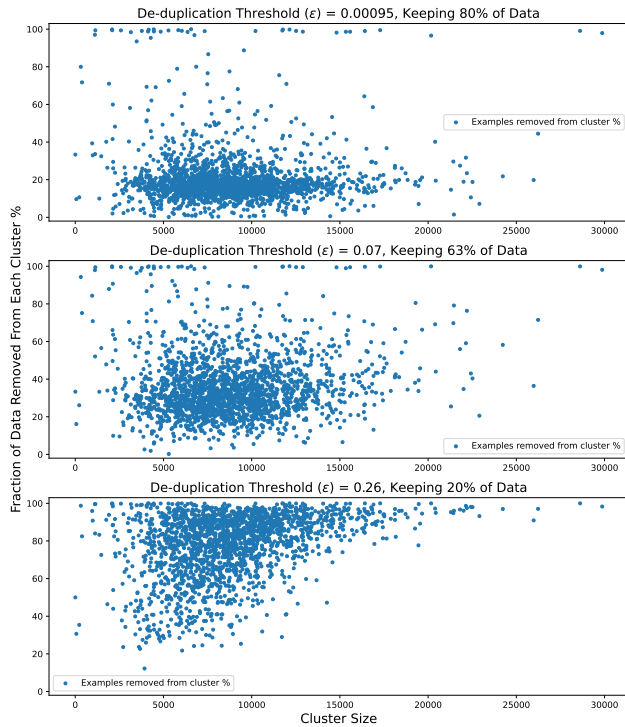


Figure A11: How many images can we remove from each cluster? Moving from top to down we increase ϵ value. The x-axis corresponds to the cluster size. The y-axis corresponds to the fraction of data removed from each cluster by SemDeDup. As we increase ϵ , more examples are removed from each cluster. We notice that most of the examples from the large clusters (the points to the right) are removed when ϵ becomes large. The points in this figure are for 2000 clusters sampled randomly from a total of 50,000 clusters.

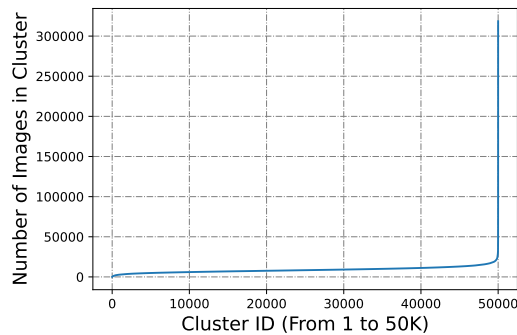


Figure A12: The number of images in each cluster for 50,000 clusters of LAION-440M images after running k-means clustering in the embedding space. The average cluster size is 8748, but we also see a few clusters with more than 300,000 examples.

H VISUALIZING EXAMPLES BEFORE AND AFTER DE-DUPLICATION

To visually show which images are removed by SemDeDup from LAION-440M dataset, we visualize some images from a random cluster before and after deduplication. To do that, we choose a cluster randomly and sort its examples by the cosine similarity to the centroid. By doing that, we can show similar images next to each other in a sequence. Then we visualize a sequence of images

before de-duplication. After that, we run SemDeDup, remove duplicates, and sort the remaining examples again. Finally, we visualize the sequence of images from the same indices we visualize before de-duplication. We visualize some examples of clusters before and after deduplication in Fig. (A14 and A15). The figures show that after applying SemDeDup with different values for the de-duplication threshold ϵ , we keep the unique images.



Figure A13: For each of the source images (**left column**), we can retrieve a set of similar images from LAION-440M. For each of the source images, we show a set of images with the highest cosine similarity to it. Images are sorted from left to right by their cosine similarity ($1 - \epsilon$) to the source image. By changing ϵ value, we can identify **perceptual duplicates**, **semantic duplicates**, and **semantically redundant** examples for the source images. As we see in the **first row**, by increasing ϵ we can remove many examples that are semantically similar to the source image.

I PERPLEXITY VALUES FOR SEMDEDUP ON LANGUAGE MODELING

J QUALITATIVE EXAMPLES OF SEMDEDUP ON C4



Figure A14: Examples from the same cluster from LAION-440M dataset before and after de-duplication. Images are sorted by cosine similarity to the cluster centroid. As we increase the deduplication threshold we start to see more unique images.

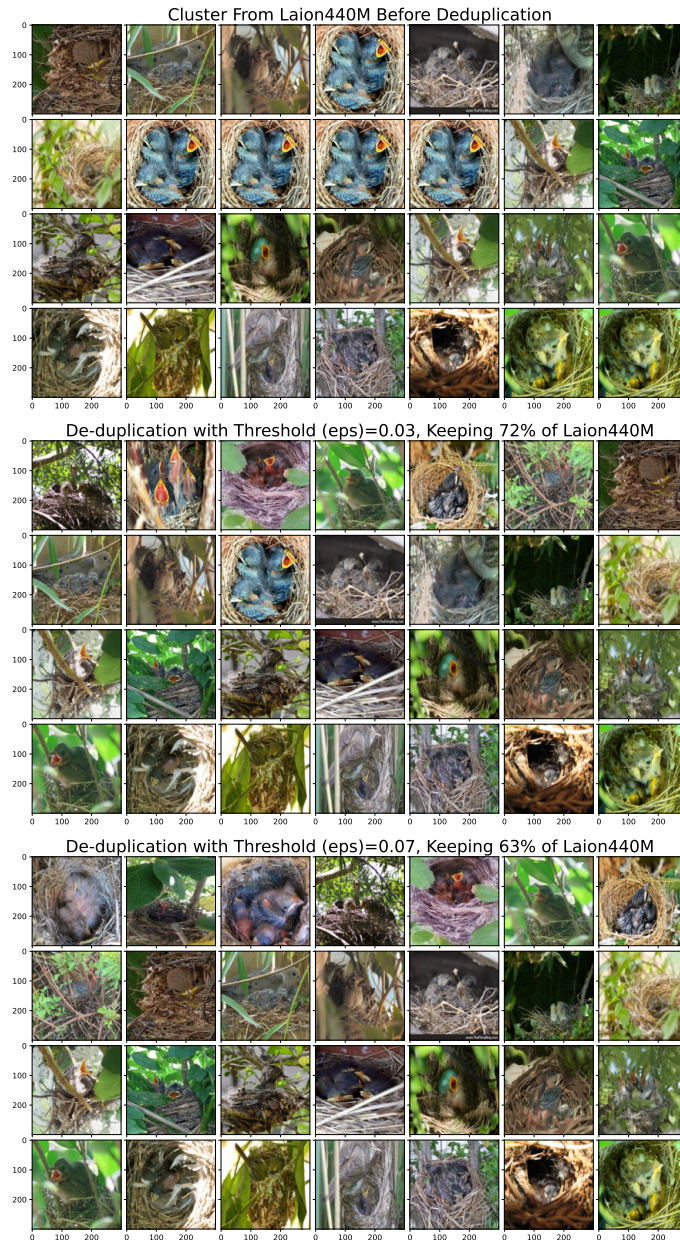


Figure A15: Examples from the same cluster from LAION440M dataset before and after de-duplication. Images are sorted by cosine similarity to the cluster centroid. As we increase the deduplication threshold we start to see more unique images.

method	Baseline (no pruning)	NearDup from (Lee et al., 2021a)	Random	SemDedup
validation set				
C4	38.95 +/- 0.07	39.46 +/- 0.14	39.51 +/- 0.07	39.35 +/- 0.16
opt_valid	47.13 +/- 0.21	47.33 +/- 0.20	47.75 +/- 0.23	47.18 +/- 0.29
prompts_with_answers	29.60 +/- 0.15	29.79 +/- 0.11	29.95 +/- 0.11	29.69 +/- 0.19

Figure A16: Comparison of perplexity values for 125M OPT model after pruning via different methods at 96% pruning. Note that (Lee et al., 2021a) pruned 3.9 % of examples, while above Random and SemDeDup prune 4% of examples. Mean and standard deviation provided across 3 training seeds. Note that the Baseline column does not prune data (which is why the perplexities are lower) and bolded numbers compare between Random, SemDedup, and NearDup.

method	Baseline (no pruning)	Random	SemDedup
validation set			
C4	38.95 +/- 0.07	42.16 +/- 0.03	41.98 +/- 0.09
opt_valid	47.13 +/- 0.21	50.66 +/- 0.11	49.04 +/- 0.16
prompts_with_answers	29.60 +/- 0.15	31.65 +/- 0.16	30.98 +/- 0.13

Figure A17: Comparison of perplexity values for 125M OPT model after pruning via different methods at 80% pruning. Mean and standard deviation provided across 3 training seeds. Note that the Baseline column does not prune data (which is why the perplexities are lower) and bolded numbers compare between Random and SemDedup.

method	Baseline	Random	SemDedup
validation set			
C4	38.95 +/- 0.07	87.09 +/- 0.21	67.32 +/- 0.16
opt_valid	47.13 +/- 0.21	95.05 +/- 0.31	70.17 +/- 0.16
prompts_with_answers	29.60 +/- 0.15	60.63 +/- 1.12	43.16 +/- 0.19

Figure A18: Comparison of perplexity values for 125M OPT model after pruning via different methods at 20% pruning. Mean and standard deviation provided across 3 training seeds. Note that the Baseline column does not prune data (which is why the perplexities are lower) and bolded numbers compare between Random and SemDedup.

method	Baseline (no pruning)	NearDup from (Lee et al., 2021a)	Random	SemDedup
validation set				
C4	46.16 +/- 0.00	46.85 +/- 0.00	46.15 +/- 0.00	46.56 +/- 0.00
opt_valid	55.69 +/- 0.00	55.27 +/- 0.00	55.20 +/- 0.00	54.88 +/- 0.00
prompts_with_answers	34.04 +/- 0.00	33.93 +/- 0.00	33.91 +/- 0.00	33.83 +/- 0.00

Figure A19: Comparison of perplexity values for 1.3b OPT model after pruning via different methods at 96% pruning. Note that (Lee et al., 2021a) pruned 3.9 % of examples, while above Random and SemDeDup prune 4% of examples. Due to compute restrictions we do not provide random seed standard deviations.

method validation set	Baseline (no pruning)	Random	SemDedup
C4	46.16 +/- 0.00	303.71 +/- 0.00	108.95 +/- 0.00
opt_valid	55.69 +/- 0.00	347.35 +/- 0.00	109.68 +/- 0.00
prompts_with_answers	34.04 +/- 0.00	269.96 +/- 0.00	72.64 +/- 0.00

Figure A20: Comparison of perplexity values for 1.3b OPT model after pruning via different methods at 20% pruning. Note that the Baseline column does not prune data (which is why the perplexities are lower) and bolded numbers compare between Random and SemDedup. Due to compute restrictions we do not provide random seed standard deviations.

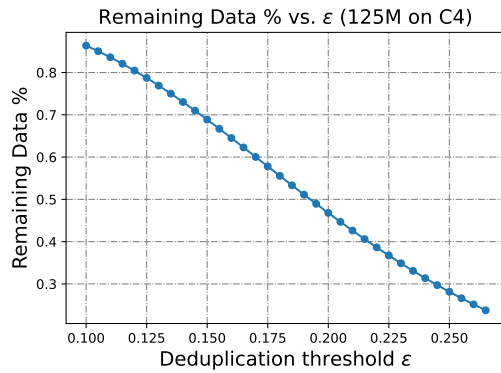


Figure A21: **Percent Data Remaining versus ϵ for C4**. The x-axis corresponds to different values of ϵ from Section 2, and the y-axis represents the corresponding fraction of data in our subset of C4.

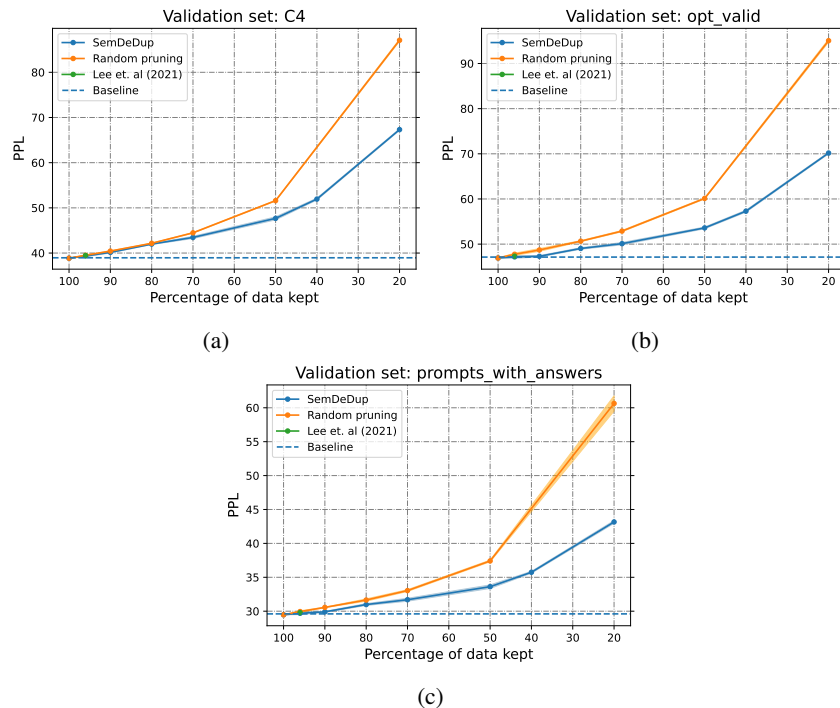


Figure A22: SemDeDup performance at different fractions of data for the 125M OPT model. We show results for the C4 validation set (top left), opt_valid (top right), and prompts_with_answers (bottoms). These are the same graphs as Figure A7, but for a wider range of percentage of data kept. We note that SemDeDup consistently outperforms random pruning at lower percentages of data kept.

K K-MEANS CLUSTERING DETAILS

We use the *faiss* library for clustering. *faiss* is a library for efficient clustering on millions of vectors with GPU support. We use Spherical k-means as we found it better for clustering on ImageNet. Spherical k-means normalizes the cluster centroids after every iteration to have a unit length. This requires the data to also be normalized before clustering. In all our experiments, we run 100 clustering iterations for LAION440M and 20 iterations for C4. We found that centroids do not move after this number of iterations.

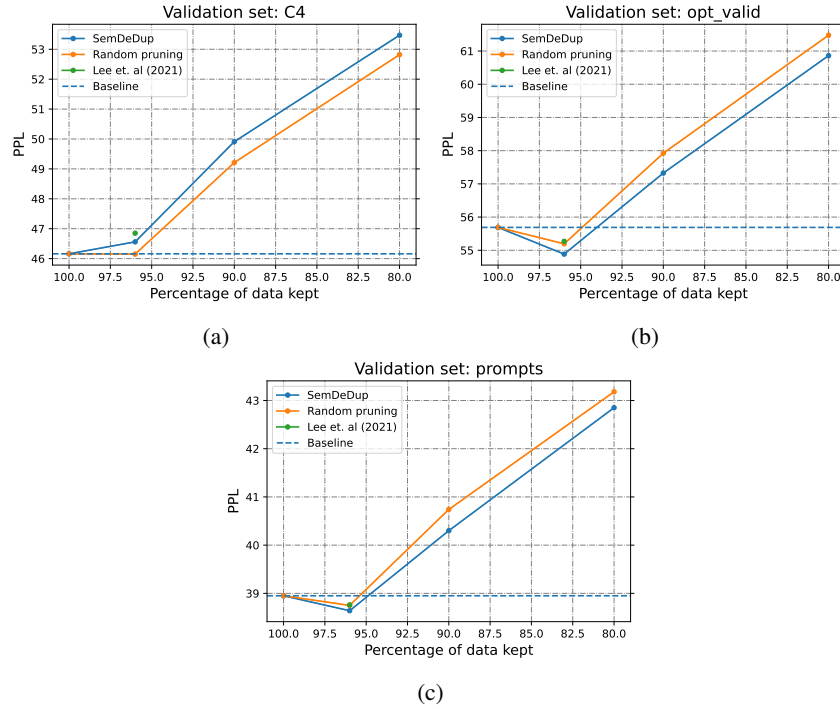


Figure A23: SemDeDup performance at different fractions of data for the 1.3B OPT model. We show results for the C4 validation set (top left), opt_valid (top right), and prompts_with_answers (bottoms). These are similar to tables A19 and A20 but for a range of percentage of data kept (96 %, 90%, 80%). We note that SemDeDup consistently outperforms random pruning at lower percentages of data kept.

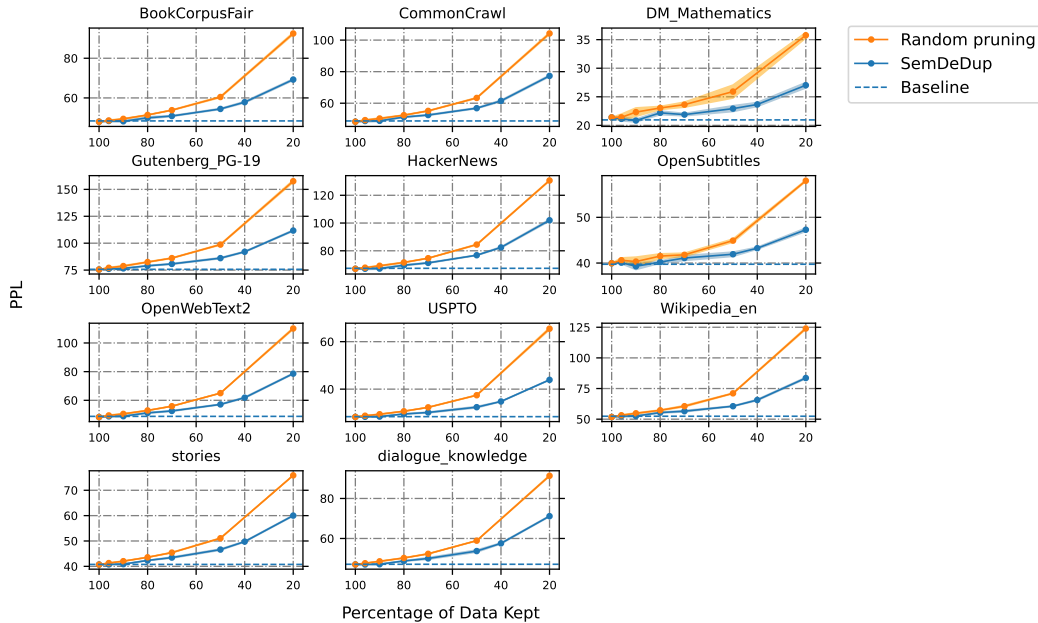


Figure A24: Percentage of Data Kept vs. Perplexity on individual validation sets within opt_valid. Runs are averages across 3 training seeds, and shaded regions represent 1 standard deviation from the mean. The title of each plot represents the name of the individual validation set within opt_valid. Note that on all tasks, SemDeDup significantly outperforms random pruning, especially at low percentages of data kept.

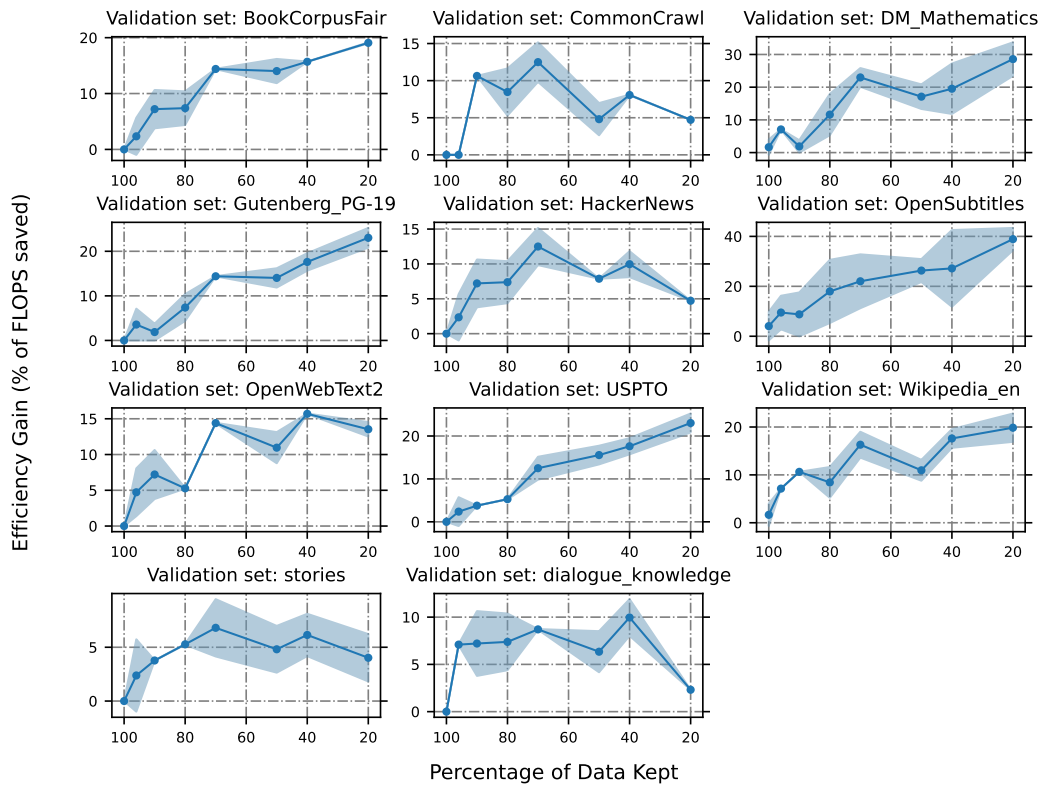


Figure A25: Percentage of Data Kept vs. Efficiency Gain on individual validation sets within opt_valid. Runs are averaged across training seeds where the model achieves baseline perplexity at some point in training, and shaded regions represent 1 standard deviation from the mean. The title of each plot represents the name of the individual validation set within opt_valid.

Keeping 90% data

text

It appears that you already have an account on this site associated with . To connect your existing account...

Keeping 100% data (i.e. no pruning)

text

It appears that you already have an account on this site associated with. To connect your existing account...

You are visiting the placeholder page for Wells Williams. This page is here because someone used our placeholder...

You are visiting the placeholder page for Mathew Barrett. This page is here because someone used our placeholder...

You are visiting the placeholder page for Marcus Slatar. This page is here because someone used our placeholder...

You are visiting the placeholder page for Bernice Andrews. This page is here because someone used our placeholder...

You are visiting the placeholder page for Emiko Chille. This page is here because someone used our placeholder...

You are visiting the placeholder page for Landon Buckland. This page is here because Someone used our placeholder...

....

You are visiting the placeholder page for Kylie Dickens. This page is here because someone used our placeholder utility ...

Figure A26: Example of semantic de-duplication with SemDeDup (cluster 4500)

Keeping 20% data

text

cheap jordan shoes from china free shipping,order maroon foams , jordan blue retro 12 , jordans sz 10 , all white 14s...
Booming business thanks to Cristiano Ronaldo! Nike Presents Cristiano Ronaldo – CR7 Winter Collection. Cristiano Ronaldo ...

Keeping 90% data

text

Purchase from us, you can get max discount and free shipping.Free shipping and returns on Nike Jordans at Nordstrom.com....
Product range. Adidas collections are divided into three groups: Sport Performance, Originals, and Sport Style. Originals that ...
cool jordans for boys , foamposite paranorman , new black and white foams , lebron 1's ,cheap jordans online for sale ...
This Comfortable Nike Huarache Free Basketball And Running has 1600 x 900 pixel resolution with jpeg format. ...
Top Rating: "Best high performance product." Performance efficiency. That is the motto of our textile engineers by...
cheap jordan shoes online free shipping order cheap jordans for sale free shipping. Air Jordan 1's new theme color matching ...
...
Trendy Men's Nike Kyrie 1 Best Seller 'All Star' Multicolor at high discount. Buy Nike Trainers - The Kyrie 1 All Star comes ...

Figure A27: Example of semantically redundant de-duplication with SemDeDup (cluster 4900)