

# Fair Feature Importance Scores for Interpreting Decision Trees

**Camille Olivia Little\***

*Department of Electrical and Computer Engineering  
Rice University*

*col1@rice.edu*

**Debolina Halder Lina\***

*Department of Computer Science  
Rice University*

*dl73@rice.edu*

**Genevera Allen**

*Department of Statistics  
Columbia University*

*genevera.allen@columbia.edu*

**Reviewed on OpenReview:** <https://openreview.net/forum?id=72mDxlzRZ1&noteId=Zu6WJGo8AJ>

## Abstract

Across various sectors such as healthcare, criminal justice, national security, finance, and technology, large-scale machine learning (ML) systems are being deployed to make critical data-driven decisions. Many have asked if we can and should trust these ML systems to be making these decisions. Two critical components are prerequisites for trust in ML systems: interpretability, or the ability to understand why the ML system makes the decisions it does, and fairness, which ensures that ML systems do not exhibit bias against certain individuals or groups. While both interpretability and fairness have garnered substantial attention in the ML literature, methods directly interpreting models in terms of fairness remain limited. This paper considers a popular interpretation for a widely used class of ML models: feature importance scores for decision trees and tree-based models. We introduce a novel *Fair Tree Feature Importance Score* to assess each feature’s impact on fairness or bias in decision trees. Analogous to the mean decrease in impurity for trees, our score quantifies the mean increase (or decrease) in group bias, and extends to interpret tree-based ensembles or surrogates of complex ML systems. Through simulations and real examples on benchmark fairness datasets, we show the validity of our Fair Tree Feature Importance Score, offering meaningful interpretations for both tree-based ensembles and tree-based surrogates of other ML systems.

## 1 Introduction

The adoption of machine learning models in high-stakes decision-making has witnessed a remarkable surge in recent years. Employing these models to assist in human decision processes offers significant advantages, such as managing vast datasets and uncovering subtle trends and patterns. However, it has become increasingly evident that the utilization of these models can lead to biased outcomes. Even when users can discern bias within the model’s results, they frequently encounter substantial hurdles when attempting to rectify this bias, primarily due to their inability to comprehend the inner workings of the model and the factors contributing to its bias. When machine learning models impact high-stakes decisions, trust is paramount (Toreini et al., 2020; Rasheed et al., 2022; Broderick et al., 2023). Users, stakeholders, and the general public need to have

---

\*Equal contribution.

confidence in the fairness and interpretability of these models. Without comprehensible explanations and the ability to audit model decisions, trust can degrade rapidly.

An incident with the Apple Credit Card in 2019 is a prime example of this. The wife of a long-time married couple applied for an increased credit limit for her card (Vigdor, 2019). Despite having a better credit score and other positive factors in her favor, her application for an increased line of credit was denied. The husband, who had filed taxes together with his wife for years, wondered why he deserved a credit limit 20 times that of his wife. When the couple inquired as to why the credit limit was so different, no one was able to explain the decision to the couple, which created consternation amongst these and other clients on social media who also demanded explanations (Knight, 2019). This led to an investigation by the New York State Department of Financial Services. While the investigation showed that the card did not discriminate based on gender (Campbell, 2021), the inability to provide an interpretation or explanation about the fairness of the algorithm used to determine credit limits created significant mistrust. Moving forward, we must have ways of interpreting ML systems based not only on the accuracy of predictions but also on the fairness of the predictions. As a particular example, we have many ways to interpret how features affect a model’s predictions through feature importance scores (Du et al., 2019; Murdoch et al., 2019). Yet, we have no current way of understanding how a feature affects the fairness of the model’s predictions. The goal of this paper is to fill in this critical gap by developing a simple and interpretable fair feature importance score.

Countless works have proposed methods to improve fairness in existing models (Zemel et al., 2013; Calmon et al., 2017; Agarwal et al., 2018; Zhang et al., 2018; Lohia et al., 2019; Caton & Haas, 2020), but few have focused on how to interpret models with regards to fairness. We adopt a simple approach and consider interpreting features in the context of fairness in decision trees. Why trees? For one, decision trees are the base ensemble for one of the most widely used algorithms, random forests (RFs). Renowned for their robust predictive capabilities, RFs provide an easily computable intrinsic feature importance score known as mean decrease in impurity (MDI) (Breiman, 1973; Caruana et al., 2008). Beyond RFs, tree-based ensembles such as AdaBoost and XGBoost are widely used machine learning models, especially for tabular data (Fernández-Delgado et al., 2014). Moreover, trees have also more recently been proposed as interpretable surrogates for deep learning systems (Guidotti et al., 2018; Schaaf et al., 2019).

In this work, we develop a straightforward and intuitive metric for calculating fair feature importance scores in decision trees. Our Fair Tree Feature Importance Score (*FairTreeFIS*) reveals which features lead to improvements in the fairness of a decision tree’s predictions and which degrade fairness or contribute to the tree’s bias. Additionally, we show how *FairTreeFIS* can be used to explain the fairness of predictions in tree-based ensembles and through tree-based surrogates of other complex ML systems.

## 1.1 Related Works

To promote trust, transparency, and accountability, there has been a surge in recent research in interpretable ML; see reviews of this literature by Ishwaran (2007); Kazemitabar et al. (2017); Lipton (2018) for more details. Interpretable ML (or explainable AI) seeks to provide human understandable insights into the data, the model or a model’s output and decisions (Allen et al., 2023; Murdoch et al., 2019). One of the most popular interpretations is feature importance, which measures how each feature contributes to a model’s predictions. There are a wide variety of model-specific feature importance measures like the popular mean decrease in impurity (MDI) for decision trees (Louppe et al., 2013) or layer-wise relevance propagation (LRP) for deep learning (Samek et al., 2021), among many others. Several proposed model agnostic measures of feature importance include Shapley values, feature permutations, and feature occlusions (Mase et al., 2021; Chen et al., 2018; Lundberg et al., 2018). This work is inspired by the MDI metric for decision trees which is widely used and also has been the subject of much recent research (Strobl et al., 2007; Li et al., 2019; Zhou & Hooker, 2021; Scornet, 2023).

Another notable category of interpretability-enhancing techniques involves surrogate models. A surrogate model is a simplified and more interpretable representation of a complex, often black-box model (Samek & Müller, 2019). Surrogate models are designed to approximate the behavior of the original model while being easier to understand, faster to compute, or more suitable for specific tasks such as optimization, sensitivity analysis, or interpretability; examples include linear models, decision trees or Gaussian processes.

One of the most well-known surrogates for interpretability is LIME (Local Interpretable Model-Agnostic Explanations) (Ribeiro et al., 2016); this approach builds a simple and interpretable (usually linear) model to interpret a local sub-region of the input space. Global surrogates, on the other hand, build a second surrogate model to approximate the global behavior and all the predictions of the original model. Decision trees have been proposed as potential global surrogates as they are fast, simple and interpretable, and as a fully grown decision tree can exactly reproduce the predictions of the original model on the training data (Blanco-Justicia & Domingo-Ferrer, 2019). On a related note, decision trees have played a crucial role in an associated field known as knowledge distillation, where simplified surrogates of complex models are crafted to mimic the complex model’s predictions (Hinton et al., 2015; Gou et al., 2021). Although knowledge distillation focuses on prediction, it is worth noting that if predictions from surrogate decision trees prove to be accurate, they can also be harnessed for interpretation (Yang et al., 2018; Sagi & Rokach, 2021; Wan et al., 2020).

Separate from interpretability, fairness is another critical component to promote trust in ML systems. There has been a surge of recent literature on fairness (Chouldechova & Roth, 2018; Friedler et al., 2019). And while many methods have been developed to mitigate bias in ML systems (Zhang et al., 2018; Grari et al., 2019; Agarwal et al., 2018), very few of these papers have additionally focused on interpretability. Yet, many have called for improving interpretability in the context of fairness (Jain et al., 2020; Agarwal, 2021; Dai et al., 2021; Wang et al., 2023). Notably, there are a few recent examples that seek to address this. Begley et al. (2020) introduces a new value function that measures fairness for use within Shapley values; although this is an interesting and relevant approach, no code is publicly available and computing these Shapley values requires significant computational time. Another relevant example is LimeOut (Bhargava et al., 2020) which uses LIME explanations to determine which features to drop to make a classifier fairer. This is a local and not global method, however, and the focus is on selecting features, not directly interpreting them via a feature importance score. In this paper, we are motivated to address these issues by proposing a very simple, intuitive, fast, and easy-to-compute fair feature importance score.

## 1.2 Contributions

We make three major contributions that allow us to interpret a tree or tree-based model in terms of the fairness of its features. First, we propose and develop the first fair feature importance score (*FairTreeFIS*) for interpreting decision trees. Second, we outline how to use *FairTreeFIS* to interpret tree-based ensembles and tree-based global surrogates of complex ML systems. Finally, we empirically validate *FairTreeFIS* for interpreting trees, tree-based ensembles, and tree-based surrogates of deep learning models on both synthetic and benchmark datasets.

## 2 *FairTreeFIS*: Fair Feature Importance Score for Trees

### 2.1 Review: Feature Importance Score (TreeFIS) for Trees

One of the many benefits of decision trees is that they have a straightforward mechanism for interpretation. Perhaps the most popular feature importance score for trees is based on the Mean Decrease in Impurity (MDI), measured by a decrease in variance in regression or in the Gini Index or other metrics for classification Breiman (1973); we refer to the MDI as *TreeFIS* in this paper. Let us first introduce some notation to formally define and review *TreeFIS*; this definition will help us in defining our novel fairness version of *TreeFIS* in the next section. Suppose we have a response  $y$  and the decision tree is built from data  $\mathbf{X}$  based on  $n$  samples. Additionally, let  $t = 0$  be the root node of the tree and  $T$  be the total number of nodes in the tree; let  $n_t$  be the number of samples falling in node  $t$ . Next, let  $c_l(t)$  be the left child of  $t$  and  $c_r(t)$  be the right child of node  $t$ . Let  $S_t = \{i \in t\}$  be the set of samples belonging to node  $t$ ; let  $y_{S_t}$  be the response associated with those samples in node  $t$ , we denote as  $y_t$  for ease of notation. Let  $\hat{y}_t$  denote the predictions for samples in node  $t$ . As an example, for binary classification with  $y \in \{0, 1\}$  or for regression with  $\mathbf{y} \in \mathbb{R}$  recall that  $\hat{y}_t = \frac{1}{|S_t|} \sum_{i \in S_t} y_i$ ; that is,  $\hat{y}_t$  is the proportion of successes in node  $t$  in the classification setting and the mean of node  $t$  in the regression setting. Additionally, let  $w_t$  represent the weighted number of samples  $\frac{n_t}{n}$  at node  $t$  and  $\mathbb{1}_{\{(t,j)\}}$  denote the indicator that feature  $j$  was split upon in node  $t$ . Let  $\mathcal{L}(y, \hat{y})$  be the loss

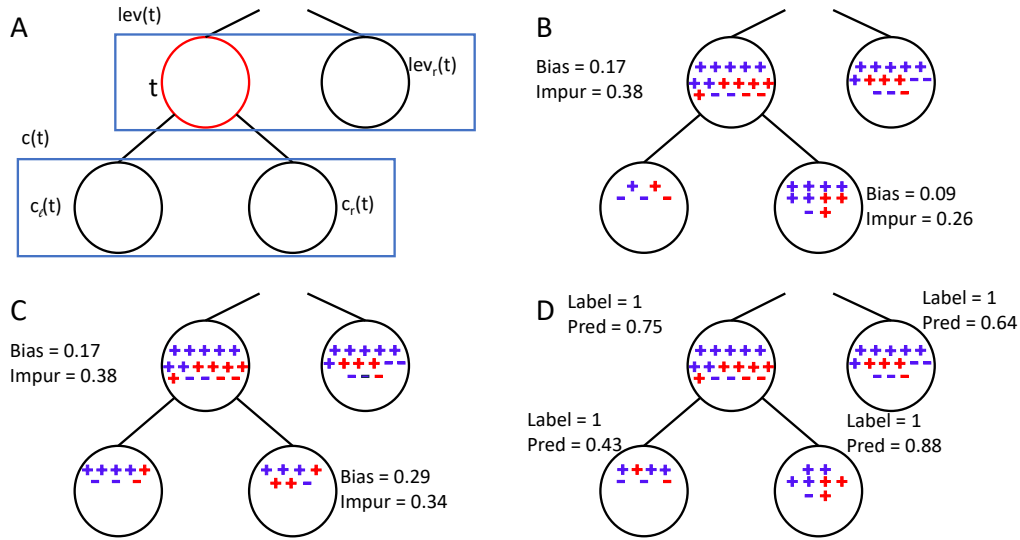


Figure 1: Schematic trees to illustrate *TreeFIS* and *FairTreeFIS*. Panel A illustrates the level of node  $t$  and the child level of  $t$  that are used to calculate *FairTreeFIS*. Panels B-D illustrate classification trees with pluses and minuses denoting positive and negative labels respectively and red and blue denoting the majority and minority groups respectively. Panels B and C show the *Bias* and weighted impurity (Gini Index) at node or level  $t$  and that of the children of node  $t$ . In Panel B, notice the *Bias* decreases between the parent and child level, resulting in a positive *FairTreeFIS* for that split. Differently, in Panel C, the *Bias* increases, resulting in a negative *FairTreeFIS* for that split. Panel D illustrates why we must use soft predictions versus hard labels when computing *FairTreeFIS*.

function employed to build the decision tree (e.g. MSE loss for regression or the Gini Index or Cross Entropy for classification). Now, we can formally define *TreeFIS*:

**Definition 1.** For a decision tree, the *TreeFIS* (MDI) for feature  $j$  is defined as:

$$FIS_j = \sum_{t=0}^{T-1} \mathbb{1}_{\{(t,j)\}} (w_t \mathcal{L}(y_t, \hat{y}_t) - (w_{c_l(t)} \mathcal{L}(y_{c_l(t)}, \hat{y}_{c_l(t)}) + w_{c_r(t)} \mathcal{L}(y_{c_r(t)}, \hat{y}_{c_r(t)}))) \quad (1)$$

If feature  $j$  is used to split node  $t$ , then the *TreeFIS* calculates the change in the loss function before and after the split, or more precisely, the change in the loss between the predictions at node  $t$  and the predictions of node  $t$ 's children. Hence, *TreeFIS* uses the accuracy of the predictions to determine feature importance.

## 2.2 FairTreeFIS

Inspired by *TreeFIS*, we seek to define a tree-based feature importance score for group fairness that is based upon the bias of the predictions instead of the accuracy of the predictions. To do this, we first need to define group bias measures. Let  $z_i \in \{0, 1\}$  for  $i = 1, \dots, n$  be an indicator of the protected attribute (e.g. gender, race or etc.) for each observation. We propose to work with two popular metrics to measure the group bias, Demographic Parity (DP) and Equality of Opportunity (EQOP), although we note that our framework is conducive to other group metrics as well. In brief, DP measures whether the predictions are different conditional on the protected attribute whereas EQOP is typically only defined for classification tasks and measures whether the predictions are different conditioned on a positive outcome and the protected attribute (Hardt et al., 2016; Beutel et al., 2017).

One might consider simply replacing the loss function in equation 1 with these bias metrics, but constructing our fair metric is not that simple. Consider that for *TreeFIS*, we can calculate the loss between  $y_t$  and  $\hat{y}_t$  for a particular node  $t$ , hence we can calculate the difference in loss after a split. We cannot use this same

process, however, for bias as the predictions in each node of the decision tree are the same by construction. Thus, for a given node  $t$ , there are never any differences between the predictions based on protected group status. Hence, the bias calculated at node  $t$  must always be zero. To remedy this and keep the same spirit as *TreeFIS*, we propose to consider the difference in bias between the split that produced node  $t$  and the split at node  $t$  that produces node  $t$ 's children. Thus, we propose to calculate the bias that results from each split of the tree. To formalize this, notice that the result of each split in a tree is a right and left node. We call this set the level of the tree for node  $t$  and denote this as  $lev(t)$ ; this level includes the right and left node denoted as  $lev_l(t)$  and  $lev_r(t)$  respectively. We also let  $c(t)$  denote all the children of  $t$ , or in other words, the child level of node  $t$ . Now, we can define our bias metrics for the split that produced node  $t$ , or in other words, the level of node  $t$ . The *Bias* of  $lev(t)$  in terms of DP and EQOP are defined as follows:

$$Bias^{DP}(lev(t)) = |E(\hat{y}_i|z_i = 1, i \in lev(t)) - E(\hat{y}_i|z_i = 0, i \in lev(t))|, \quad (2)$$

$$Bias^{EQOP}(lev(t)) = |E(\hat{y}_i = 1|y_i = 1, z_i = 1, i \in lev(t)) - E(\hat{y}_i = 1|y_i = 1, z_i = 0, i \in lev(t))|. \quad (3)$$

These group bias metrics range between zero and one, with higher values indicating larger amounts of bias in the predictions. Armed with these definitions, we now seek to replace the loss function  $\mathcal{L}$  in *TreeFIS* with this *Bias* metric to obtain our *FairTreeFIS*. To do so, we calculate the difference in bias between the level of node  $t$  and node  $t$ 's children:

**Definition 2.** *The FairTreeFIS for feature  $j$  is defined as:*

$$FairTreeFIS_j = \sum_{t=0}^{T-1} \mathbb{1}_{\{(t,j)\}} w_t (Bias(lev(t)) - Bias(c(t))) \quad (4)$$

Note that at the root node,  $t = 0$ , the level of the tree consists of only the root; then,  $Bias(lev(0)) = 0$  for this constant model at the root in our definition. Finally, as the scale of *TreeFIS* is not always interpretable, it is common to normalize *TreeFIS* so that it sums to one across all features. We analogously do so for *FairTreeFIS* by rescaling so that the sum of the absolute values across all features is one; in this manner, *FairTreeFIS* and *TreeFIS* are on the same scale and can be directly interpreted.

Our *FairTreeFIS* formulation is an analogous extension of *TreeFIS* as it calculates the *Bias* of the parent minus the *Bias* of the children summed over all splits that split upon feature  $j$ . But unlike *TreeFIS* which is always positive, *FairTreeFIS* can be both positive and negative. As decision trees are constructed with each split minimizing the loss, the difference in loss between parent and children is always positive. The splits do not consider *Bias*, however, so the *Bias* of the parent level could be higher or lower than that of the child level. Thus, *FairTreeFIS* will be positive when the split at node  $t$  improved the bias and negative when the split at node  $t$  made the bias worse. *FairTreeFIS* is then positive for features that improve the fairness (or decrease the bias) and negative for features that are less fair (or increased the bias). This is a particularly advantageous aspect of *FairTreeFIS* that improves the interpretability of each feature with respect to fairness.

Figure 1 illustrates our *FairTreeFIS* definition for a binary classification example. Panel A highlights our notation and calculation of *Bias* for levels of the tree. In Panel B, the bias improves from the parent level to the child level and hence *FairTreeFIS* is positive, indicating the split improved the fairness of the predictions. The opposite happens in Panel C where the bias is worse in the child level and hence *FairTreeFIS* is negative indicating worsening fairness as a result of the split.

In regression settings, *FairTreeFIS* can be easily applied with the demographic parity metric equation 2, which is most commonly used for regression tasks. The bias can be calculated directly as the empirical mean of the predictions in each sensitive group. For classification settings, however, more care needs to be taken in computing the *Bias* and our *FairTreeFIS* metric, as discussed in the next section.

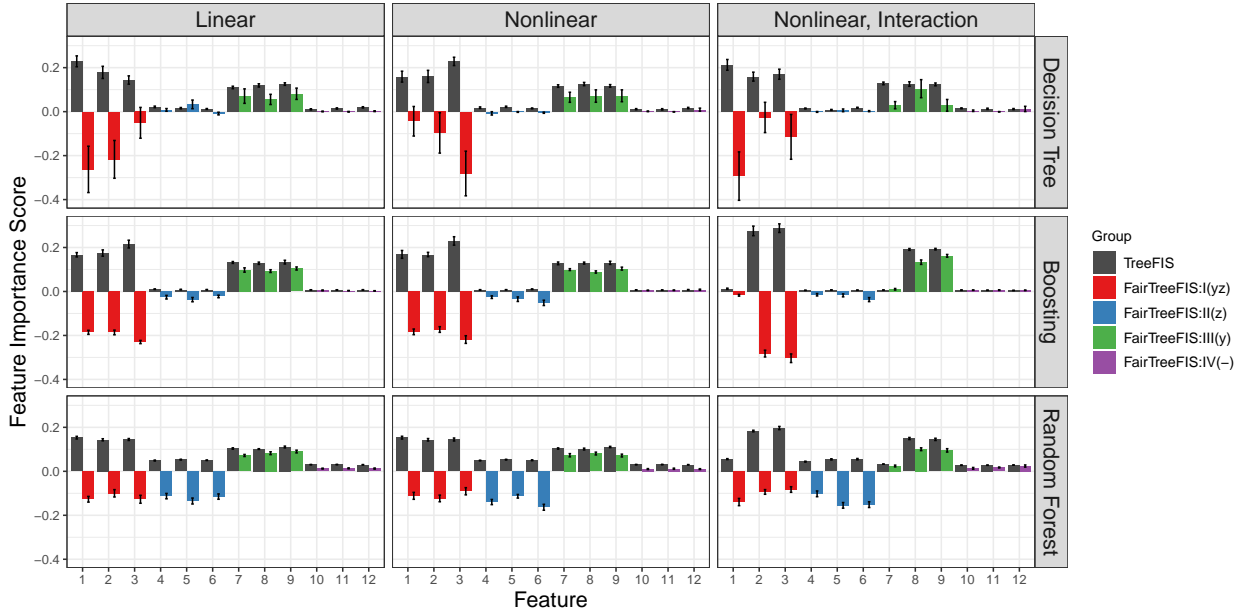


Figure 2: Classification results for *TreeFIS* (MDI using the Gini Index) and *FairTreeFIS* (DP) on the three major simulation types and for a decision tree, gradient boosting, and random forest classifier. We consider four feature groups: features in  $G_1$  (red) and  $G_2$  (blue) are correlated with the protected attribute, features in  $G_1$  and  $G_3$  (green) are signal, and features in  $G_4$  (purple) are noise. The magnitudes and directions of the *FairTreeFIS* scores for each group align with what we would expect from the simulation construction, thus validating our metric.

### 2.3 FairTreeFIS: Classification Setting

Typically for classification tasks, people use hard label predictions to compute the DP and EQOP *Bias* metrics. However, for decision trees, this presents a problem as both the left and right node of level  $t$  could predict the same hard label; the parent and child levels could also predict the same hard label. In these settings, using hard labels with equation 2 and equation 3 would result in zero or a misleading *Bias* measure even when the split might be unfair. This phenomenon is illustrated in Figure 1 Panel D. To remedy this issue, we are left with two options: employ measures of *Bias* that take soft predictions or employ probabilistic decision trees that return stochastic hard label predictions based on the soft label probabilities. So that our *Bias* metrics are interpretable and comparable with others that typically employ hard label predictions, we choose the latter option. Let  $lev_\ell(t)$  and  $lev_r(t)$  denote the left and right nodes of the level of node  $t$  and let  $\pi_{lev_\ell(t)}$  and  $\pi_{lev_r(t)}$  denote the proportion of positive samples in these nodes, respectively. Then for probabilistic trees,  $\hat{y}_i$  for  $i \in lev_\ell(t)$  is a Bernoulli random variable with probability of success  $\pi_{lev_\ell(t)}$ , and that of the right node is defined analogously. Given this, we can directly apply equation 2 and equation 3 to compute the expectation necessary for our *Bias* metrics:

**Proposition 1.** Consider binary classification with probabilistic trees, then our Bias measures are given by the following:

$$\begin{aligned} Bias^{DP}(lev(t)) = & \left| \pi_{lev_\ell(t)} \left( \frac{\sum_i \mathbb{1}_{\{z_i=1, i \in lev_\ell(t)\}}}{\sum_i \mathbb{1}_{\{z_i=1, i \in lev(t)\}}} - \frac{\sum_i \mathbb{1}_{\{z_i=0, i \in lev_\ell(t)\}}}{\sum_i \mathbb{1}_{\{z_i=0, i \in lev(t)\}}} \right) \right. \\ & \left. + \pi_{lev_r(t)} \left( \frac{\sum_i \mathbb{1}_{\{z_i=1, i \in lev_r(t)\}}}{\sum_i \mathbb{1}_{\{z_i=1, i \in lev(t)\}}} - \frac{\sum_i \mathbb{1}_{\{z_i=0, i \in lev_r(t)\}}}{\sum_i \mathbb{1}_{\{z_i=0, i \in lev(t)\}}} \right) \right|, \end{aligned} \quad (5)$$

$$\begin{aligned} Bias^{EQOP}(lev(t)) = & \left| \pi_{lev_\ell(t)} \left( \frac{\sum_i \mathbb{1}_{\{z_i=1, y_i=1, i \in lev_\ell(t)\}}}{\sum_i \mathbb{1}_{\{z_i=1, y_i=1, i \in lev(t)\}}} - \frac{\sum_i \mathbb{1}_{\{z_i=0, y_i=1, i \in lev_\ell(t)\}}}{\sum_i \mathbb{1}_{\{z_i=0, y_i=1, i \in lev(t)\}}} \right) \right. \\ & \left. + \pi_{lev_r(t)} \left( \frac{\sum_i \mathbb{1}_{\{z_i=1, y_i=1, i \in lev_r(t)\}}}{\sum_i \mathbb{1}_{\{z_i=1, y_i=1, i \in lev(t)\}}} - \frac{\sum_i \mathbb{1}_{\{z_i=0, y_i=1, i \in lev_r(t)\}}}{\sum_i \mathbb{1}_{\{z_i=0, y_i=1, i \in lev(t)\}}} \right) \right|. \end{aligned} \quad (6)$$

Thus, even when employing probabilistic trees, our *Bias* measures and hence *FairTreeFIS* is easy to compute. The proof / calculation for Proposition 1 is in the Supplemental materials. Note also that these results for the *Bias* and also *FairTreeFIS* can easily be extended to multi-class classification settings, which we present in the Supplemental materials.

## 2.4 FairTreeFIS for Tree-Based Ensembles and Decision Tree Global Surrogates

Decision trees are widely used due to their ability to break down complex problems into simpler solutions, thus making them more interpretable (Loh, 2011). Further, they are commonly employed in various popular ensemble-based classifiers such as random forest, gradient boosting, XGBoost, and others. For these tree-based ensembles, *TreeFIS* is averaged (or averaged with weights) over all the trees in the ensemble (Breiman, 1996). We propose to extend *FairTreeFIS* in the exact same manner to interpret all tree-based ensembles.

Decision trees have also gained attention for their role in knowledge distillation to transfer knowledge from large, complex models to smaller models that are easier to deploy (Hinton et al., 2015; Buciluă et al., 2006). Here, decision trees are not fit to the original labels or outcomes, but instead to the complex model’s predicted labels or outcomes. Recently, others have proposed to use decision trees in a similar manner for global interpretation surrogates (Blanco-Justicia & Domingo-Ferrer, 2019; Yang et al., 2018; Sagi & Rokach, 2021; Wan et al., 2020). Decision trees are often an ideal surrogate in this scenario as a fully grown tree can exactly reproduce the predictions of the complex, black-box model. Hence, if the predictions match precisely, we can be more confident in the feature interpretations that the decision tree surrogate produces. Here, we propose to employ *FairTreeFIS* to interpret features in a decision tree surrogate in the exact same manner as that of *TreeFIS*. In this way, *FairTreeFIS* provides a simple, intuitive, and computationally efficient way to interpret any large, complex, and black-box ML system.

## 3 Empirical Studies

### 3.1 Simulation Setup and Results

We design simulation studies to validate our proposed *FairTreeFIS* metric; these simulations are an important test since there are not other comparable fair feature interpretation methods to which we can compare our approach. We work with four groups of features: features in  $G_1$  and  $G_2$  are correlated with the protected attribute  $z$  and are hence biased, features in  $G_1$  and  $G_3$  are signal features associated with the outcome  $y$ , and features in  $G_4$  are purely noise. We simulate the protected attribute,  $z_i$ , as  $\mathbf{z} \stackrel{i.i.d}{\sim} \text{Bernoulli}(\pi)$  and take  $\pi = 0.2$ . Then, the data is generated as  $\mathbf{x}_{i,j} \stackrel{i.i.d}{\sim} N(\alpha_j * z_i, \Sigma)$  with  $\alpha_j = 2$  if  $j \in G_1$  or  $G_2$  and  $\alpha_j = 0$  if  $j \in G_3$  or  $G_4$  in the classification scenarios and  $\alpha_j = 0.4$  for  $j \in G_1$  or  $G_2$  and  $\alpha_j = 0$  for  $j \in G_3$  or  $G_4$  in the regression simulations. Hence, all features in  $G_1$  and  $G_2$  are strongly associated with  $z$  and hence should be identified as biased features with a negative *FairTreeFIS*. Then, we consider three major simulation

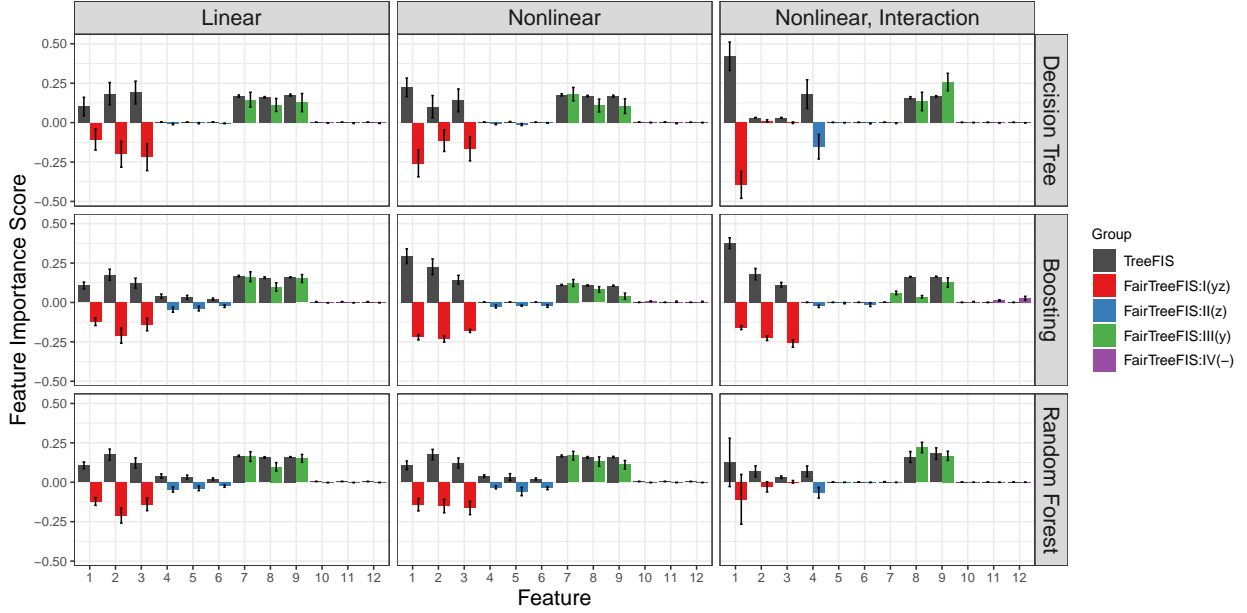


Figure 3: Regression results for *TreeFIS* (MDI using the Gini Index) and *FairTreeFIS* (DP) on the three major simulation types and for a decision tree regressor, gradient boosting regressor, and random forest regressor. We consider four feature groups: features in  $G_1$  (red) and  $G_2$  (blue) are correlated with the protected attribute, features in  $G_3$  (green) are signal, and features in  $G_4$  (purple) are noise. The magnitudes and directions of the *FairTreeFIS* scores for each group align with what we would expect from the simulation construction, thus validating our metric.

scenarios for both classification and regression settings: a linear model where  $f(x_i) = \beta_0 + \sum_{j=1}^p \beta_j x_{ij}$ , a non-linear additive scenario where  $f(x_i) = \beta_0 + \sum_{j=1}^p \beta_j \sin(x_{ij})$ , and finally a non-linear scenario with pairwise interactions where  $f(x_i) = \beta_0 + \sum_{j=1}^p \beta_j x_{ij} + \sum_{l=1, k=1}^p \gamma_{lk} \sin(x_{il} x_{ik})$  and with  $\gamma_{lk} = 1$  for the first two features in each group and zero otherwise. We also let  $\beta_j = 1$  for  $j \in G_1$  or  $G_3$  and  $\beta_j = 0$  for  $j \in G_2$  or  $G_4$  in the classification scenario and  $\beta_j = 3$  for  $j \in G_1$  or  $G_3$  and  $\beta_j = 0$  for  $j \in G_2$  or  $G_4$  in the regression simulations. For regression scenarios, we let  $y_i = f(x_i) + \epsilon$  where  $\epsilon \stackrel{i.i.d.}{\sim} N(0, 1)$ , and for classification scenarios, we employ a logistic model with  $y_i \stackrel{i.i.d.}{\sim} \text{Bernoulli}(\sigma(f(x_i)))$ , where  $\sigma$  is the sigmoid function. We present our binary classification and regression results for the DP metric with  $N = 1000$ ,  $p = 12$  features, and  $\Sigma = \mathbf{I}$  in Figure 2. Additional simulation results for both classification and regression tasks with  $N = 500$  or  $1000$ , larger  $p$ , correlated features with  $\Sigma \neq \mathbf{I}$ , and for the EQOP metric are presented in the Supplemental Materials.

Figure 2 presents the *TreeFIS* and *FairTreeFIS* metric for each of the twelve features colored according to their group status, and averaged over ten replicates. We present all three classification simulation scenarios for decision tree, gradient boosting, and random forest classifiers. First, notice that the sign of *FairTreeFIS* is correct in all scenarios; that is, features in  $G_1$  (red) and  $G_2$  (blue) are biased and *FairTreeFIS* accurately reflects this bias with a negative score while the features in  $G_3$  (green) and  $G_4$  (purple) exhibit no bias and *FairTreeFIS* is positive. *FairTreeFIS* also accurately captures the magnitude of each feature’s contributions as the magnitude of *FairTreeFIS* and *TreeFIS* are comparable in all scenarios. Note here that *FairTreeFIS* values are low for non-signal features in trees and gradient boosting, as non-signal features are likely not split upon and hence do not contribute to bias or fairness. Because random forests use random splits, however, non-signal features are split upon more often and we see that *FairTreeFIS* accurately determines that features in  $G_2$  are biased. Additionally, in Figure 3, we present all three regression scenarios for decision tree regressor, gradient boosting regressor, and random forest regressor. We see similar behavior to the classification results. Overall, these results (and the many additional simulations in the Supplement)



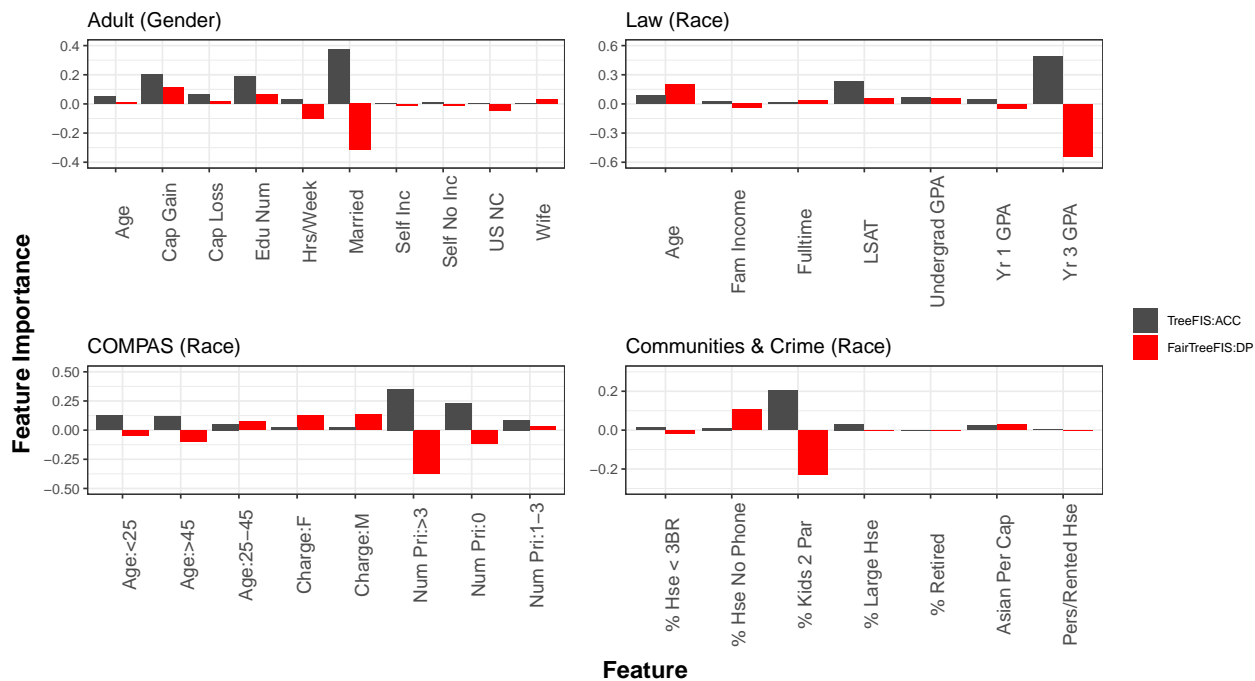


Figure 4: Random Forest interpretation using *FairTreeFIS* for the Adult, Law, COMPAS, and Communities and Crime datasets. The importance scores’ magnitudes and directions align with other studies done on these datasets.

strongly validate the use of *FairTreeFIS* for interpreting features in trees and tree-based ensembles for the bias or fairness that the feature induces in the predictions.

### 3.2 Case Studies

To align our work with the existing fairness literature, we evaluate our metric on five popular benchmark datasets. We examine: (i) the Adult Income dataset (Dua & Graff, 2017) containing 14 features and approximately 48,000 individuals with class labels stating whether their income is greater than \$50,000 and Gender as the protected attribute; (ii) the COMPAS dataset (Larson et al., 2022), which contains 13 attributes of roughly 7,000 convicted criminals with class labels that state whether the individual will recidivate within two years of their most recent crime and we use Race as the protected attribute; (iii) the Law School dataset (Whiteman, 1998), which has 8 features and 22,121 law school applicants with class labels stating whether an individual will pass the Bar exam when finished with law school and Race as the protected attribute; (iv) the Communities and Crimes (C & C) dataset (Dua & Graff, 2017), which contains 96 features of 2,000 cities with a regression task of predicting the number of violent crimes per capita and Race encoded as the protected attribute; and (v) the German Credit dataset, which classifies people with good or bad credit risks based on 20 features and 1,000 observations and we use Gender as the protected attribute.

We begin by evaluating the quality of *FairTreeFIS* interpretations on four benchmark datasets in Figure 4; additional interpretations of all benchmarks are provided in the Supplemental Material. Figure 4 shows scores for a random forest classifier on the Adult dataset with Gender as the protected attribute, the Law dataset with race as the protected attribute, the C & C dataset with Race as the protected attribute, and the COMPAS dataset with Race as the protected attribute. In the Adult dataset, the “Married” feature contributes most to both accuracy and bias. This indicates that while the “Married” feature is highly predictive, its use in the model could lead to more unfair predictions. This aligns with studies done showing that in men higher wages were associated with a higher proportion of being married, whereas in women higher wages were associated with a lower proportion of being married and the fact that many women are

not employed outside the home (Mincy et al., 2009). Figure 4 shows that “Yr 3 GPA” contributes most to both the accuracy and the bias of the model in the Law dataset. In the C & C dataset, the percentage of kids who grew up with two parents in the household, denoted as “% Kids 2 Par”, has the highest magnitude for both *TreeFIS* and *FairTreeFIS*, although *FairTreeFIS* shows that this feature contributes to the bias seen in the predictions. Studies have shown that black young adults are disproportionately impacted by family structure (Wilcox, 2021). Specifically, black young adults are less likely to go to college and more likely to be imprisoned if they grow up in a single-parent household. In contrast, white young adults are significantly less affected by family structure. Thus, our *FairTreeFIS* interpretations are consistent with these studies. Looking at the results for the COMPAS dataset, the number of priors greater than 3, denoted as “Num Pri > 3” has the highest magnitude for both *TreeFIS* and *FairTreeFIS*, and again *FairTreeFIS* reveals that this feature strongly influences the biased outcomes. These interpretations are consistent with other studies on the COMPAS data set (Rudin et al., 2020), again validating our results.

Next, we further validate our *FairTreeFIS* interpretations of Random Forest models by removing features that contribute most to the bias of the model based on their *FairTreeFIS* values. Figure 5 shows fairness and accuracy metrics over 10 runs on the Adult, Law, COMPAS, and Communities and Crime datasets. The gray bar represents all features included in the model, the red bar represents when the feature with the most negative *FairTreeFIS* value was removed from the model, and the blue bar represents when the two features with the most negative *FairTreeFIS* values were removed. We expect that models containing all features would yield the most biased results and the bias to decrease as features that contribute to the bias most are removed. We see that this is indeed the trend for all of the datasets. Furthermore, we see in the C & C dataset that the accuracy also slightly increases as features that contribute to bias are removed. In the Adult dataset, we notice little movement between fairness and accuracy no matter which features are included. We suspect that this is due in part to the fact that the Adult and C & C datasets have a large number of features and many of them are highly correlated. As a result, it is unsurprising to see only small changes when removing 1 or 2 features at a time.

We move on to validating the use of *FairTreeFIS* for interpreting tree-based global surrogates. To do this, in Figure 6, we compare *TreeFIS* and *FairTreeFIS* results on a gradient boosting classifier (where these scores were calculated by averaging over all tree ensemble members) to *TreeFIS* and *FairTreeFIS* results for a tree-based surrogate of the same gradient boosting classifier (where a fully grown decision tree was fit to the model’s predictions). Generally, we see that the *TreeFIS* and *FairTreeFIS* scores between the top row (boosting) and bottom row (surrogate) are similar in magnitude and direction. Specifically looking at the Adult dataset, we see that “Married” is an important feature according to *TreeFIS* but *FairTreeFIS* indicates that the model is using “Married” in a way that contributes to bias; these results are reflected in both the boosting model and the tree surrogate. While the scores for some of the less important features may vary slightly between the original model and the surrogate, notice that the most important features are always consistent between the two approaches. This indicates that our *FairTreeFIS* scores are effective when used to interpret tree-based global surrogates. Additional case studies on tree-based surrogates including validating *TreeFIS* compared to model-specific deep learning feature importance scores are provided in the Supplemental Material.

Lastly, in Figure 7, we examine *TreeFIS* and *FairTreeFIS* scores for a tree-based surrogate of a deep learning model (multi-layer perception with two hidden layers each with  $p$  units and ReLU activation) as well as a tree-based surrogate for a bias mitigation method, the Adversarial Debiasing approach (Zhang et al., 2018) for the Adult dataset with Gender as the protected attribute. The Adversarial Debiasing method (Zhang et al., 2018) applies adversarial learning to improve fairness by learning how to prevent an adversary from predicting the protected attribute. Looking at the Adult dataset scores of the tree-based surrogate of the deep learning model, we see that the “Cap. Gain”, “Edu Num”, and “Married” features are most important in terms of accuracy and US Native Country (“US NC”), “Married”, and “Age” are most influential in terms of bias. Specifically, “US NC” and “Married” hurt the overall fairness of the model. In the debiasing method, the magnitude of both *FairTreeFIS* and *TreeFIS* for the feature “Married” decreases substantially, showing that using this feature likely would result in more biased predictions. Additionally, the “Cap. Gain” feature becomes more important in terms of accuracy in the debiasing model, as this feature contributes less to bias. The accuracy and fairness go from 0.84 and 0.83 in the deep learning model to 0.80 and 0.92

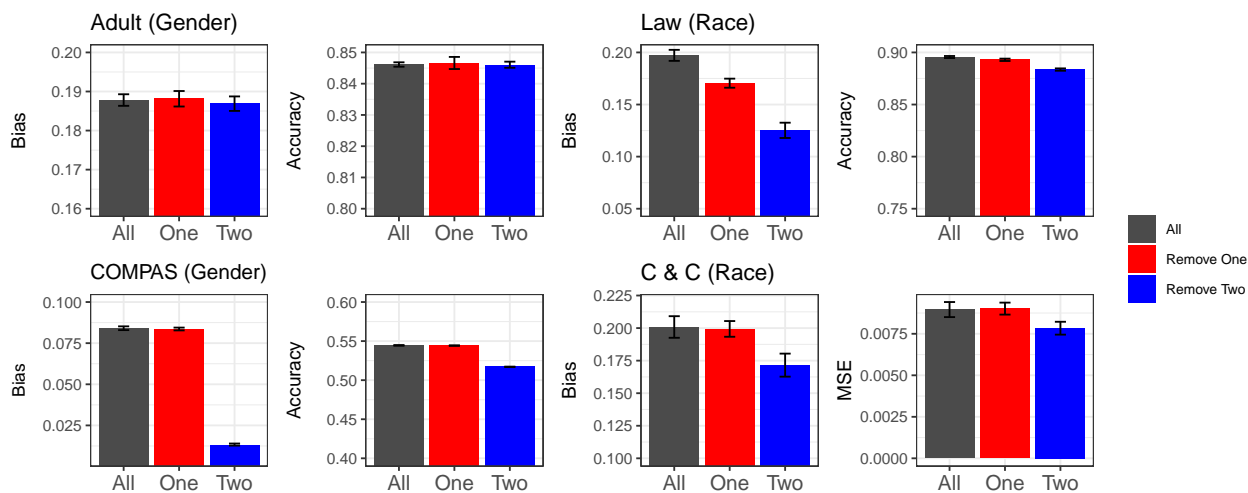


Figure 5: Random Forest model interpretations using *FairTreeFIS* when features contributing to most to bias are removed (See Figure 4). Each panel shows accuracy and fairness (DP) metrics in three scenarios for the Adult, Law, COMPAS, and C & C datasets. The gray bar represents a random forest model trained with all the features, the red bar represents a random forest model trained without the feature with the most negative *FairTreeFIS* value, and the blue bar represents a model trained without the two most negative *FairTreeFIS* values. Note that removing the features with the most negative *FairTreeFIS* values decreases bias, therefore validating our *FairTreeFIS* metric.

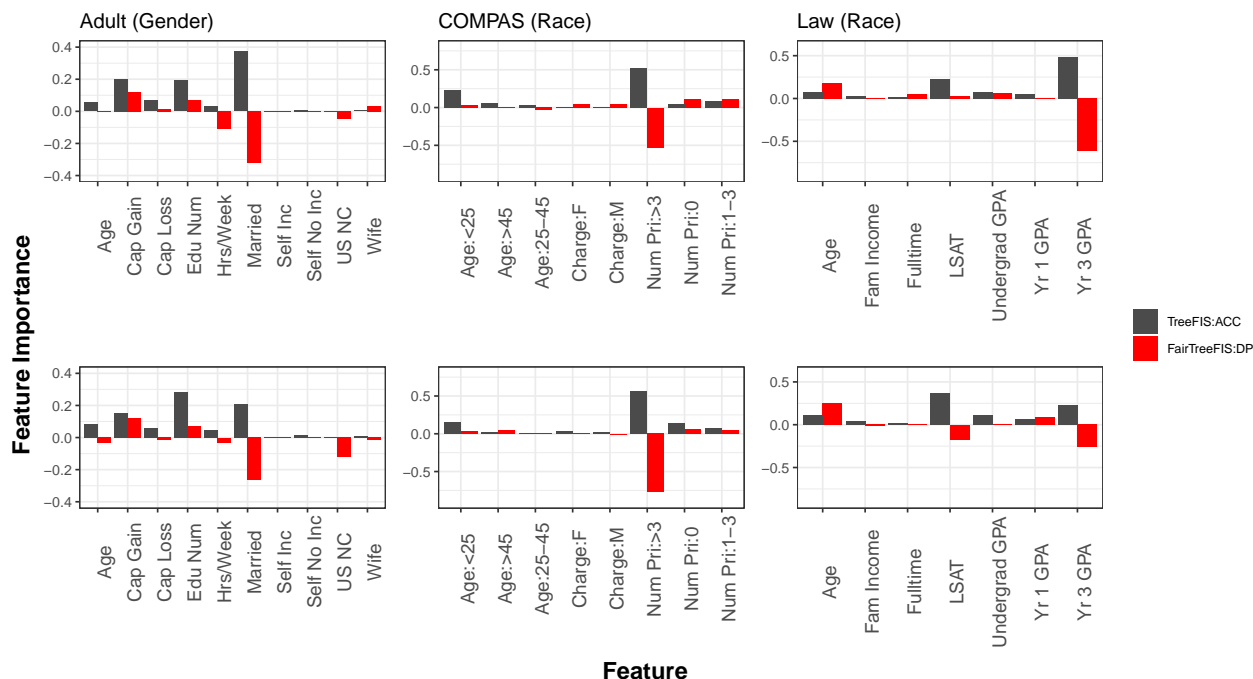


Figure 6: Global surrogate validation. The top row shows *TreeFIS* and *FairTreeFIS* results on a gradient boosting classifier for the Adult, COMPAS and Law datasets. The bottom row shows *TreeFIS* and *FairTreeFIS* results for a tree-based surrogate of a boosting classifier. The scores between the top and bottom rows are similar in magnitude and direction, indicating that our scores are effective when used to interpret tree-based global surrogates.

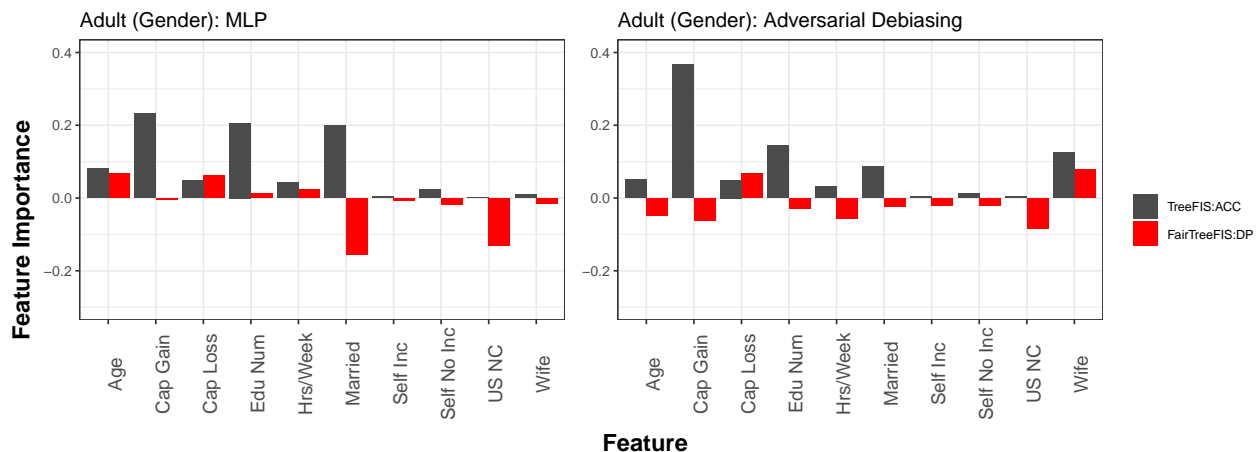


Figure 7: Interpretation of features for models with bias mitigation. The *FairTreeFIS* values show the difference in importance scores between a tree-based surrogate of a deep learning (two hidden layer MLP) model and a tree-based surrogate of a bias mitigation approach, deep learning adversarial debiasing method. Note that the “Married” feature has the most negative *FairTreeFIS* in the tree-based surrogate model, but is significantly less negative in the debiased model.

in the Adversarial Debiasing model, indicating that the approach is successful at mitigating bias. Seeing as the features that strongly negatively contribute to fairness have less of an impact when the model becomes more fair indicates that our fair feature importance scores accurately capture when features are helping or hurting the overall fairness of the model. Note also that strongly predictive features often hurt fairness, and as fairness increases, accuracy decreases. This trend is a sign of the well-known and studied tradeoff between fairness and accuracy (Zliobaite, 2015; Little et al., 2022). Further results on all five benchmark datasets are included in the Supplemental material.

## 4 Discussion

In this work, we proposed a fair tree feature importance score, *FairTreeFIS*, for interpreting trees, tree-based ensembles, and tree-based surrogates of complex ML systems. We extend the traditional accuracy-based *TreeFIS* (MDI), which calculates the change in loss between parent and child nodes, to consider fairness, where we calculate the difference in group bias between the parent and child levels. We empirically demonstrated that *FairTreeFIS* accurately captures the importance of features concerning fairness in various simulation and benchmark studies. Crucially, we showed that we can employ this method to interpret complex deep-learning models when trees are used as surrogates.

Our *FairTreeFIS* metric is inspired by *TreeFIS* (MDI) and recently, there have been many papers studying theoretical properties of MDI and some of its limitations Strobl et al. (2007); Li et al. (2019); Zhou & Hooker (2021). For example, MDI is known to favor features with high entropy and less correlation Strobl et al. (2007); it is also known to be consistent using out-of-sample data for additive models Scornet (2023); Li et al. (2019); Zhou & Hooker (2021), but its properties for other model classes are unknown. Given this recent research on MDI, one may ask whether our *FairTreeFIS* metric inherits these properties and limitations. Note that our *FairTreeFIS* metric performed well in simulations, including when there are correlated features (see Appendix), suggesting that perhaps these limitations do not apply. Further, note that many of the limitations of MDI arise from the fact that it utilizes the same loss function to compute feature importance as was used to greedily build the tree. In contrast, *FairTreeFIS* is based upon the differences in proportions across groups after each split and is hence less subject to such loss function specific biases. Nonetheless, just as MDI has been studied extensively and theoretically, the properties of our *FairTreeFIS* metric are important to investigate in future work.

Additionally, there are several other possible directions to investigate in future work. *FairTreeFIS* is flexible and can be easily extended to work with other group fairness metrics, including those that consider several groups in the protected attribute or even multiple protected attributes. Further, just as people have studied feature interactions using trees Basu et al. (2018), *FairTreeFIS* can possibly be extended to interpret bias that might arise from feature interactions. Finally, one could also investigate extending other popular feature importance scores to help interpret features in the context of fairness.

Our *FairTreeFIS* metric offers valuable insights for transparency and auditing. While our score does not indicate if features are fair or unfair, it does help users understand how the model is using features in a manner that may help or hurt fairness. Combined with traditional *TreeFIS*, it enables users to understand the relative importance of features for both accuracy and fairness. Imagine if, in 2019, Apple and Goldman Sachs had employed *FairTreeFIS* to explain the biases exhibited by their models toward women. This could have significantly reduced public distrust and facilitated mitigation efforts. Furthermore, the increasing emphasis on fairness in AI models, exemplified by the October 2023 executive order on Safe, Secure, and Trustworthy AI, underscores the critical need for tools like *FairTreeFIS*. By enabling fair model interpretation, *FairTreeFIS* facilitates transparency and builds trust among users and consumers.

## Acknowledgments

COL acknowledges support from the NSF Graduate Research Fellowship Program under grant number 1842494. GIA, COL and DL acknowledge support from the JP Morgan Faculty Research Awards and NSF DMS-2210837.

## References

- Alekh Agarwal, Alina Beygelzimer, Miroslav Dudik, John Langford, and Hanna Wallach. A reductions approach to fair classification. In *ICML 2018: Proceedings of the 35<sup>th</sup> International Conference on Machine Learning*, volume 80, pp. 60–69, 2018. URL <https://proceedings.mlr.press/v80/agarwal18a.html>.
- Sushant Agarwal. Trade-offs between fairness and interpretability in machine learning. In *IJCAI 2021 Workshop on AI for Social Good*, 2021.
- Genevera I Allen, Luqin Gan, and Lili Zheng. Interpretable machine learning for discovery: Statistical challenges & opportunities. *arXiv preprint arXiv:2308.01475*, 2023.
- Sumanta Basu, Karl Kumbier, James B Brown, and Bin Yu. Iterative random forests to discover predictive and stable high-order interactions. *Proceedings of the National Academy of Sciences*, 115(8):1943–1948, 2018.
- Tom Begley, Tobias Schwedes, Christopher Frye, and Ilya Feige. Explainability for fair machine learning. *arXiv preprint arXiv:2010.07389*, 2020.
- Alex Beutel, Jilin Chen, Zhe Zhao, and Ed H. Chi. Data decisions and theoretical implications when adversarially learning fair representations. *ArXiv Pre-Print 1707.00075*, 2017. doi: 10.48550/arXiv.1707.00075.
- Vaishnavi Bhargava, Miguel Couceiro, and Amedeo Napoli. Limeout: an ensemble approach to improve process fairness. In *Joint European conference on machine learning and knowledge discovery in databases*, pp. 475–491. Springer, 2020.
- Alberto Blanco-Justicia and Josep Domingo-Ferrer. Machine learning explainability through comprehensible decision trees. In *Machine Learning and Knowledge Extraction: Third IFIP TC 5, TC 12, WG 8.4, WG 8.9, WG 12.9 International Cross-Domain Conference, CD-MAKE 2019, Canterbury, UK, August 26–29, 2019, Proceedings 3*, pp. 15–26. Springer, 2019.
- Leo Breiman. *Classification and regression trees*. Routledge, 1973.
- Leo Breiman. Bagging predictors. *Machine Learning*, 24(2):123–140, 1996. doi: 10.1023/A:1018054314350.

- Tamara Broderick, Andrew Gelman, Rachael Meager, Anna L Smith, and Tian Zheng. Toward a taxonomy of trust for probabilistic machine learning. *Science Advances*, 9(7):eabn3999, 2023.
- Cristian Bucilua, Rich Caruana, and Alexandru Niculescu-Mizil. Model compression. In *Proceedings of the 12th ACM SIGKDD international conference on Knowledge discovery and data mining*, pp. 535–541, 2006.
- Flavio P Calmon, Dennis Wei, Bhanukiran Vinzamuri, Karthikeyan Natesan Ramamurthy, and Kush R Varshney. Optimized pre-processing for discrimination prevention. In *NeurIPS 2017: Advances in Neural Information Processing Systems*, volume 30, pp. 3995–4004, 2017. doi: <https://proceedings.neurips.cc/paper/2017/hash/9a49a25d845a483fae4be7e341368e36-Abstract.html>.
- Ian Carlos Campbell. The apple card doesn’t actually discriminate against women, investigators say. *The Verge*, 2021. URL <https://www.theverge.com/2021/3/23/22347127/goldman-sachs-apple-card-no-gender-discrimination>.
- Rich Caruana, Nikos Karampatziakis, and Ainur Yessenalina. An empirical evaluation of supervised learning in high dimensions. In *Proceedings of the 25th international conference on Machine learning*, pp. 96–103, 2008.
- Simon Caton and Christian Haas. Fairness in machine learning: A survey. *ArXiv Pre-Print 2010.04053*, 2020. doi: 10.48550/arXiv.2010.04053.
- Jianbo Chen, Le Song, Martin J Wainwright, and Michael I Jordan. L-shapley and c-shapley: Efficient model interpretation for structured data. *arXiv preprint arXiv:1808.02610*, 2018.
- Alexandra Chouldechova and Aaron Roth. The frontiers of fairness in machine learning. *ArXiv Pre-Print 1810.08810*, 2018. doi: 10.48550/arXiv.1810.08810.
- Jessica Dai, Sohini Upadhyay, Stephen H Bach, and Himabindu Lakkaraju. What will it take to generate fairness-preserving explanations? *arXiv preprint arXiv:2106.13346*, 2021.
- Mengnan Du, Ninghao Liu, and Xia Hu. Techniques for interpretable machine learning. *Communications of the ACM*, 63(1):68–77, 2019.
- Dheeru Dua and Casey Graff. UCI machine learning repository, 2017. URL <http://archive.ics.uci.edu/ml>.
- Manuel Fernández-Delgado, Eva Cernadas, Senén Barro, and Dinani Amorim. Do we need hundreds of classifiers to solve real world classification problems? *The journal of machine learning research*, 15(1): 3133–3181, 2014.
- Sorelle A. Friedler, Carlos Scheidegger, Suresh Venkatasubramanian, Sonam Choudhary, Evan P. Hamilton, and Derek Roth. A comparative study of fairness-enhancing interventions in machine learning. In *FAccT 2019: Proceedings of the 2019 Conference on Fairness, Accountability, and Transparency*, pp. 329–338, 2019. doi: 10.1145/3287560.3287589.
- Jianping Gou, Baosheng Yu, Stephen J Maybank, and Dacheng Tao. Knowledge distillation: A survey. *International Journal of Computer Vision*, 129:1789–1819, 2021.
- Vincent Grari, Boris Ruf, Sylvain Lamprier, and Marcin Detyniecki. Fair adversarial gradient tree boosting. In *ICDM 2019: Proceedings of the 2019 IEEE International Conference on Data Mining*, pp. 1060–1065, 2019. doi: 10.1109/ICDM.2019.00124.
- Riccardo Guidotti, Anna Monreale, Salvatore Ruggieri, Franco Turini, Fosca Giannotti, and Dino Pedreschi. A survey of methods for explaining black box models. *ACM Computing Surveys*, 51(5), aug 2018. ISSN 0360-0300. doi: 10.1145/3236009. URL <https://doi.org/10.1145/3236009>.
- Moritz Hardt, Eric Price, and Nathan Srebro. Equality of opportunity in supervised learning. In *NeurIPS 2016: Advances in Neural Information Processing Systems 29*, volume 29, 2016. URL <https://papers.nips.cc/paper/2016/hash/9d2682367c3935defcb1f9e247a97c0d-Abstract.html>.

- Geoffrey Hinton, Oriol Vinyals, and Jeff Dean. Distilling the knowledge in a neural network. *arXiv preprint arXiv:1503.02531*, 2015.
- Hemant Ishwaran. Variable importance in binary regression trees and forests. 2007.
- Aditya Jain, Manish Ravula, and Joydeep Ghosh. Biased models have biased explanations. *arXiv preprint arXiv:2012.10986*, 2020.
- Jalil Kazemitabar, Arash Amini, Adam Bloniarz, and Ameet S Talwalkar. Variable importance using decision trees. In I. Guyon, U. Von Luxburg, S. Bengio, H. Wallach, R. Fergus, S. Vishwanathan, and R. Garnett (eds.), *Advances in Neural Information Processing Systems*, volume 30. Curran Associates, Inc., 2017. URL [https://proceedings.neurips.cc/paper\\_files/paper/2017/file/5737c6ec2e0716f3d8a7a5c4e0de0d9a-Paper.pdf](https://proceedings.neurips.cc/paper_files/paper/2017/file/5737c6ec2e0716f3d8a7a5c4e0de0d9a-Paper.pdf).
- Will Knight. The apple card didn't see gender—and that's the problem. *WIRED*, 2019. URL <https://www.wired.com/story/the-apple-card-didnt-see-genderand-thats-the-problem/>.
- Jeff Larson, Marjorie Roswell, and Vaggelis Atlidakis. Compas recidivism risk score data and analysis, 2022. URL <https://github.com/propublica/compas-analysis/>.
- Xiao Li, Yu Wang, Sumanta Basu, Karl Kumbier, and Bin Yu. A debiased mdi feature importance measure for random forests. *Advances in Neural Information Processing Systems*, 32, 2019.
- Zachary C Lipton. The mythos of model interpretability: In machine learning, the concept of interpretability is both important and slippery. *Queue*, 16(3):31–57, 2018.
- Camille Olivia Little, Michael Weylandt, and Genevera I. Allen. To the fairness frontier and beyond: Identifying, quantifying, and optimizing the fairness-accuracy Pareto frontier. *arXiv preprint arXiv:2206.00074*, 2022.
- Wei-Yin Loh. Classification and regression trees. *Wiley interdisciplinary reviews: data mining and knowledge discovery*, pp. 14–23, 2011.
- Pranay K. Lohia, Karthikeyan Natesan Ramamurthy, Manish Bhide, Diptikalyan Saha, Kush R. Varshney, and Ruchir Puri. Bias mitigation post-processing for individual and group fairness. In *ICASSP 2019: Proceedings of the 2019 IEEE International Conference on Acoustics, Speech and Signal Processing*, pp. 2847–2851, 2019. doi: 10.1109/ICASSP.2019.8682620.
- Gilles Louppe, Louis Wehenkel, Antonio Sutera, and Pierre Geurts. Understanding variable importances in forests of randomized trees. *Advances in neural information processing systems*, 26, 2013.
- Scott M. Lundberg, Gabriel G. Erion, and Su-In Lee. Consistent individualized feature attribution for tree ensembles. *ArXiv Pre-Print 1802.03888*, 2018. doi: 10.48550/arXiv.1802.03888.
- Masayoshi Mase, Art B Owen, and Benjamin B Seiler. Cohort shapley value for algorithmic fairness. *arXiv preprint arXiv:2105.07168*, 2021.
- Ronald Mincy, Jennifer Hill, and Marilyn Sinkewicz. Marriage: Cause or mere indicator of future earnings growth? *Journal of Policy Analysis and Management*, 28(3):417–439, 2009.
- W James Murdoch, Chandan Singh, Karl Kumbier, Reza Abbasi-Asl, and Bin Yu. Definitions, methods, and applications in interpretable machine learning. *Proceedings of the National Academy of Sciences*, 116(44):22071–22080, 2019.
- Khansa Rasheed, Adnan Qayyum, Mohammed Ghaly, Ala Al-Fuqaha, Adeel Razi, and Junaid Qadir. Explainable, trustworthy, and ethical machine learning for healthcare: A survey. *Computers in Biology and Medicine*, pp. 106043, 2022.

- Marco Tulio Ribeiro, Sameer Singh, and Carlos Guestrin. "why should i trust you?": Explaining the predictions of any classifier. In *Proceedings of the 22nd ACM SIGKDD International Conference on Knowledge Discovery and Data Mining*, pp. 1135–1144. Association for Computing Machinery, 2016. ISBN 9781450342322. doi: 10.1145/2939672.2939778. URL <https://doi.org/10.1145/2939672.2939778>.
- Cynthia Rudin, Caroline Wang, and Beau Coker. The age of secrecy and unfairness in recidivism prediction. *Harvard Data Science Review*, 2(1):1, 2020.
- Omer Sagi and Lior Rokach. Approximating xgboost with an interpretable decision tree. *Information Sciences*, 572:522–542, 2021.
- Wojciech Samek and Klaus-Robert Müller. Towards explainable artificial intelligence. *Explainable AI: interpreting, explaining and visualizing deep learning*, pp. 5–22, 2019.
- Wojciech Samek, Grégoire Montavon, Sebastian Lapuschkin, Christopher J Anders, and Klaus-Robert Müller. Explaining deep neural networks and beyond: A review of methods and applications. *Proceedings of the IEEE*, 109(3):247–278, 2021.
- Nina Schaaf, Marco Huber, and Johannes Maucher. Enhancing decision tree based interpretation of deep neural networks through l1-orthogonal regularization. In *2019 18th IEEE International Conference On Machine Learning And Applications (ICMLA)*, pp. 42–49. IEEE, 2019.
- Erwan Scornet. Trees, forests, and impurity-based variable importance in regression. In *Annales de l'Institut Henri Poincaré (B) Probabilités et statistiques*, volume 59, pp. 21–52. Institut Henri Poincaré, 2023.
- Carolin Strobl, Anne-Laure Boulesteix, Achim Zeileis, and Torsten Hothorn. Bias in random forest variable importance measures: Illustrations, sources and a solution. *BMC bioinformatics*, 8:1–21, 2007.
- Ehsan Toreini, Mhairi Aitken, Kovila Coopamootoo, Karen Elliott, Carlos Gonzalez Zelaya, and Aad Van Moorsel. The relationship between trust in ai and trustworthy machine learning technologies. In *Proceedings of the 2020 conference on fairness, accountability, and transparency*, pp. 272–283, 2020.
- Neil Vigdor. Apple card investigated after gender discrimination complaints. *New York Times*, 2019. URL <https://www.nytimes.com/2019/11/10/business/Apple-credit-card-investigation.html>.
- Alvin Wan, Lisa Dunlap, Daniel Ho, Jihan Yin, Scott Lee, Henry Jin, Suzanne Petryk, Sarah Adel Bargal, and Joseph E Gonzalez. Nbd: neural-backed decision trees. *arXiv preprint arXiv:2004.00221*, 2020.
- Caroline Wang, Bin Han, Bhrij Patel, and Cynthia Rudin. In pursuit of interpretable, fair and accurate machine learning for criminal recidivism prediction. *Journal of Quantitative Criminology*, 39(2):519–581, 2023.
- Linda Whiteman. The scale and effects of admissions preferences in higher education (SEAPHE), 1998. URL <http://www.seaphe.org/databases.php>.
- W. Bradford Wilcox. Less poverty, less prison, more college: What two parents mean for black and white children, 2021. URL <https://ifstudies.org/blog/less-poverty-less-prison-more-college-what-two-parents-mean-for-black-and-white-children>.
- Yongxin Yang, Irene Garcia Morillo, and Timothy M Hospedales. Deep neural decision trees. *arXiv preprint arXiv:1806.06988*, 2018.
- Rich Zemel, Yu Wu, Kevin Swersky, Toni Pitassi, and Cynthia Dwork. Learning fair representations. In *International conference on machine learning*, pp. 325–333, 2013. URL <https://proceedings.mlr.press/v28/zemel13.html>.
- Brian Hu Zhang, Blake Lemoine, and Margaret Mitchell. Mitigating unwanted biases with adversarial learning. In *AIES 2018: Proceedings of the 2018 AAAI/ACM Conference on AI, Ethics, and Society*, pp. 335–340, 2018. doi: 10.1145/3278721.3278779.



Zhengze Zhou and Giles Hooker. Unbiased measurement of feature importance in tree-based methods. *ACM Transactions on Knowledge Discovery from Data (TKDD)*, 15(2):1–21, 2021.

Indre Zliobaite. On the relation between accuracy and fairness in binary classification. *ArXiv Pre-Print 1505.05723*, 2015. doi: 10.48550/arXiv.1505.05723. Presented at the 2<sup>nd</sup> Workshop on Fairness, Accountability, and Transparency in Machine Learning.