

Nirvana: A Specialized Generalist Model With Task-Aware Memory Mechanism

Anonymous ACL submission

Abstract

Large Language Models (LLMs) excel at general language tasks but struggle in specialized domains. Specialized Generalist Models (SGMs) address this by preserving broad capabilities while adapting to target domains. However, existing architectures provide limited support for task-guided specialized memory mechanisms. In this work, we introduce Nirvana, an SGM featuring specialized memory, linear-time complexity, and test-time task information extraction. Central to Nirvana are: (1) Task-Aware Memory Trigger (*Trigger*), which treats each input as a self-supervised fine-tuning task and adjusts task-related parameters on the fly; and (2) Specialized Memory Updater (*Updater*), which dynamically consolidates task-relevant context. Nirvana matches or surpasses LLM baselines on general benchmarks and achieves the lowest perplexity across specialized domains including biomedicine, finance, and law. On the challenging task of Magnetic Resonance Imaging (MRI), we attach lightweight codecs to the frozen Nirvana backbone and fine-tune them on paired k-space signals and images. Nirvana achieves higher-fidelity reconstructions than conventional LLM-based models, with Trigger providing effective domain-specific adaptation. Ablation studies confirm that removing Trigger leads to substantial degradation across all tasks, underscoring its essential role in task-aware specialization.

1 Introduction

Large Language Models (LLMs) have significantly advanced general language processing, but still have limitations in specialized tasks (Jimenez and Yang, 2023; Guha et al., 2023; Srivastava, 2022; Liang and Bommasani, 2022). For instance, while an LLM can describe the rules of the game of Go, it struggles to match the deep, domain-specific strategic reasoning of expert Go programs like AlphaGo. To solve this problem, Specialized Generalist Models (SGMs) (Zhang et al., 2024) are proposed to

retain broad, generalist capabilities while achieving expert-level performance in at least one (and ideally multiple) specialized domains. SGMs play a pivotal role in real deployments, e.g., medicine and other safety-critical workflows, which demand both general reasoning ability and domain-expert inference accuracy, together with verifiable use of external knowledge and tools (Wang and Sun, 2025; Lewis et al., 2020; Schick et al., 2023; Yao et al., 2023).

Specifically, the specialized memory mechanism of SGMs requires that models can identify the task information on the fly and then adapt their internal pathways and memory use, explicit retrieval and non-parametric memory (Fedus et al., 2021; Lepikhin et al., 2020; Jiang et al., 2024; Lewis et al., 2020; Borgeaud et al., 2022; Khandelwal et al., 2019; Wu et al., 2022), as well as the ability to dynamically choose the methodology to memorize. Diverse memory mechanisms have been explored to capture, store, and adapt contextual information, which is summarized in Table 1. However, existing LLM architectures still exhibit limitations in supporting flexible and specialized memory mechanisms, and it remains an open question **how memory mechanism can be adaptively adjusted in a task-specific manner during test time.**

To answer this question, we propose a novel SGM called Nirvana, which realizes specialized and non-linear memory mechanism with dynamic decay and second-order information. We propose a Task-Aware Memory Trigger (*Trigger*), which enables dynamic self-supervised fine-tuning to adapt to domain shifts. By turning each incoming sample into a learning task, Trigger continuously refines the model’s fast parameters on the fly, boosting robustness under varying data conditions. We also design a Specialized Memory Updater (*Updater*) that dynamically memorizes the context under the guidance of Trigger. In experiments, Nirvana matches or surpasses strong LLM baselines on standard

Model	Dynamic Decay	Non-Linearity	Local Optimum	Specialized Memory	Memory Update Operation
Attention	✗	✓	✓	✗	$M_t = M_{t-1} \cup \{(k_t, v_t)\}$
SWA	✗	✓	✓	✗	$M_t = (M_{t-1} \setminus \{(k_c, v_c)\}) \cup \{(k_t, v_t)\}$
Naive Linear Attention	✗	✗	✗	✗	$M_t = M_{t-1} + v_t k_t^\top$
DeltaNet	✗	✗	✗	✗	$M_t = (I - \beta_t k_t k_t^\top) M_{t-1} + \beta_t v_t k_t^\top$
Longhorn	✗	✗	✗	✗	$M_t = (I - \delta_t k_t k_t^\top) M_{t-1} + \delta_t v_t k_t^\top$
RetNet/Lightning	✗	✗	✗	✗	$M_t = \alpha M_{t-1} + v_t k_t^\top$
GLA	✓	✗	✗	✗	$M_t = \text{Diag}(\alpha_t) M_{t-1} + v_t k_t^\top$
HGRN2	✓	✗	✗	✗	$M_t = \text{Diag}(a_t) M_{t-1} + v_t (1 - a_t)^\top$
Mamba2	✓	✗	✗	✗	$M_t = \alpha_t M_{t-1} + \beta_t v_t k_t^\top$
PolySketchFormer	✗	✓	✗	✗	$M_t = M_{t-1} + v_t (k_t^\top)^p$
TTT	✗	✓	✗	✗	$M_t = M_{t-1} - \eta_t \nabla \ell(M_{t-1}(k_t), v_t)$
RWKV-7	✓	✗	✗	✗	$M_t = (\text{Diag}(\alpha_t) - \beta_t k_t k_t^\top) M_{t-1} + \beta_t v_t k_t^\top$
Gated DeltaNet	✓	✗	✗	✗	$M_t = \alpha_t (I - \beta_t k_t k_t^\top) M_{t-1} + \beta_t v_t k_t^\top$
Titans/Miras	✓	✓	✗	✗	$M_t = \alpha_t M_{t-1} + S_t$ $S_t = \eta_t S_{t-1} - \eta_t \nabla \ell(M_{t-1}(k_t), v_t)$
Nirvana	✓	✓	✓	✓	$M_t = \gamma_t \{\alpha_t (I - \beta_t k_t k_t^\top) M_{t-1}^{\text{LA}} + \beta_t v_t k_t^\top\}$ $\cup \eta_t \{(M_{t-1}^{\text{SWA}} \setminus \{(k_c, v_c)\}) \cup (k_t, v_t)\}$

Table 1: A summary of some modern LLM architectures. We compare them based on 4 characteristics: Dynamic Decay: adaptively forget memory about the past; Non-Linearity: beyond linear algebra operations such as matrix multiplications; Local Optimum: extract the second-order information about tokens; Specialized Memory: adaptively memorize the context according to the task information.

general-language benchmarks, while achieving the lowest perplexity across specialized domains including biomedicine, finance, and law. On the challenging task of Magnetic Resonance Imaging (MRI), we attach lightweight codecs to the frozen Nirvana backbone and fine-tune them on paired k-space signals and images, achieving higher-fidelity reconstructions than conventional LLM-based models. In this setting, Trigger enables Nirvana to calibrate itself to the distribution of k-space signals and MRI images, yielding diagnostic-quality reconstructions and accurate clinical reports. This unified approach of Trigger and Updater obviates the need for extensive domain-specific model backbone retraining, saving valuable time and data resources. By seamlessly fusing broad linguistic intelligence with rapid, on-the-fly specialization, Nirvana ushers in a new class of general-to-special SGMs.

2 Related Work

Hybrid Attention–Recurrent Architectures

Recent work explores hybrid designs combining attention with recurrent architectures for long-context modeling. Samba (Ren et al., 2024) alternates Mamba with sliding-window attention to enable efficient sequence processing, though its fixed structure may limit adaptability. Jamba (Lieber et al., 2024; Team et al., 2024) introduces a Transformer–Mamba hybrid with MoE-style

routing to achieve high throughput on long contexts, but relies on static gating and layer placement. Gated DeltaNet (Yang et al., 2025) integrates gated recurrent updates into hybrid architectures (H1/H2), improving extrapolation and reasoning, but introduces additional inference overhead.

TTT and Meta-Learning

Test-time training (TTT) (Sun et al., 2024) enables instance-wise adaptation via self-supervised updates during inference, improving robustness to distribution shift but incurring additional computation. Meta-learning methods (Vanschoren, 2019; Vettoruzzo et al., 2024) aim to acquire fast adaptation mechanisms but often struggle to generalize to streaming or per-sample settings. Online meta-learning (Finn et al., 2019) extends to continual learning scenarios, though it is not designed for efficient test-time self-supervision. Building on these directions, Nirvana introduces a Trigger module that frames each test instance as an implicit self-supervised task, enabling lightweight adaptation under distribution shift with reduced overhead.

3 Method

To support specialized memory, we introduce a two-branch architecture operating at complementary levels. The *Trigger* branch captures abstract task signals, while the *Updater* branch adaptively encodes task-specific context. The two interact

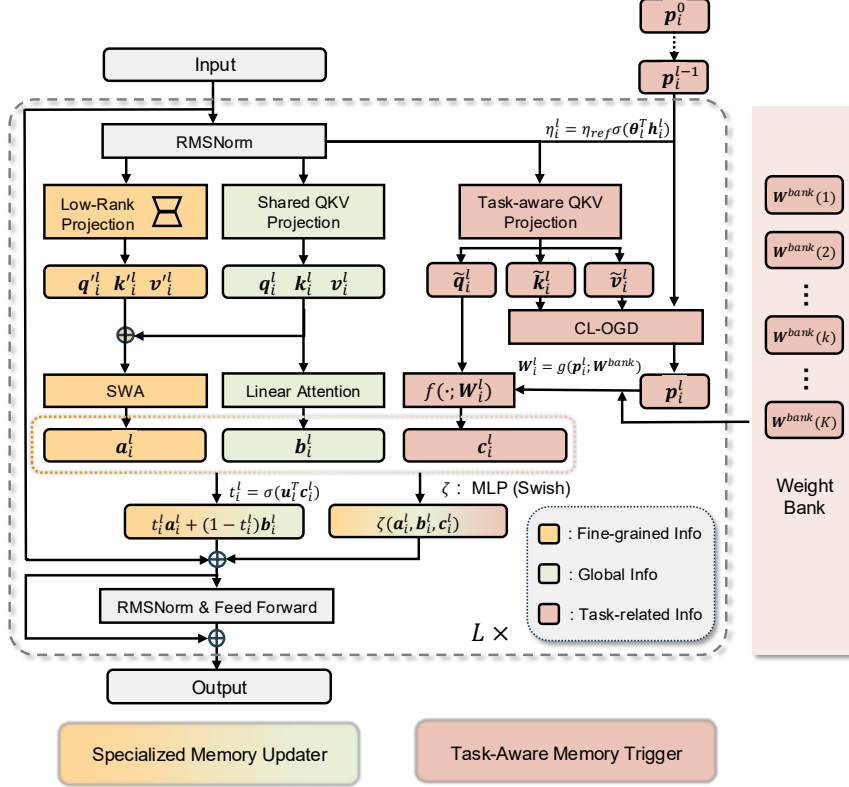


Figure 1: Visualization of Nirvana’s architecture. Updater employs conditional interpolation between SWA and linear attention, which can use any architecture from the 3-rd to the last but not least line in Table 1. Trigger extracts fast parameters p_i^l to update $f(\cdot; W_i^l)$ and generates task-related information c_i^l as the condition of Updater.

across layers, with Trigger conditioning Updater to interpolate between SWA and linear attention. Figure 1 presents the overall architecture of Nirvana.

3.1 Specialized Memory Updater

SWA excels at modeling fine-grained information and local dependencies within a bounded context (Vaswani et al., 2017), while linear attention enables accurate global information modeling of long sequences (Yang et al., 2025). Therefore, Updater is proposed to combine the advantages of both modules. We employ SWA instead of the full attention, such that the computational complexity of the model only grows *linearly* with the length of the input sequence. With the aim of sharing the majority of parameters across the network, we use shared QKV projection matrices for SWA and linear attention. In order to learn the discrepancy of query, key, and value between the two modules with small computation overhead and few learnable parameters, we use a dimension reduction representation with low rank linear projection independently added before SWA. Denote q_i^l , k_i^l , and v_i^l as the outputs of low rank linear projection, where

the superscript l and the subscript i denote the l -th layer and the i -th token throughout this paper. We add q_i^l , k_i^l , and v_i^l to the original counterparts to yield the query, key, and value of SWA.

3.2 Task-Aware Memory Trigger

The process of memory-related parametric learning can be viewed as compressing a massive training set into the weights of a model. This process of compression into the weights involves capturing the essence of the data that the model has been trained on. In conventional frameworks, the model’s weights are shared across different tokens. However, Nirvana introduces a novel methodology that tailors the fast weights specifically for different layers and different tokens through Trigger.

In order to facilitate the continuous flow of task-related information across various layers, we propose Trigger, which updates the fast weights by extracting the task in the context. Besides, we design a novel mechanism that allows the tokens not to share the same fast weights, such that the model can avoid information leakage during the training process. Specifically, the tokens have individual

fast hyper-parameters \mathbf{p}_i^l that are implicitly determined by the task information. In order to map \mathbf{p}_i^l to the fast weights of a neural network, we extract the tokens' individual fast weights from a fast weight bank \mathbf{W}^{bank} , which is shared across different layers and different tokens. Generally, the fast weights are denoted by \mathbf{W}_i^l , which are generated from \mathbf{p}_i^l and \mathbf{W}^{bank} via a predefined function as:

$$\mathbf{W}_i^l = g(\mathbf{p}_i^l; \mathbf{W}^{\text{bank}}). \quad (1)$$

Note that the generation of fast weights is conditional on both the layer and the token, allowing for a more granular control of the learning process across the network. Besides, the dimension of \mathbf{p}_i^l should be much lower than \mathbf{W}_i^l , which ensures efficient parameter transfer across layers.

To extract the abstract task-related information, we employ linear layers to compute the query, key, and value of Trigger, denoted by $\tilde{\mathbf{q}}_i^l$, $\tilde{\mathbf{k}}_i^l$, and $\tilde{\mathbf{v}}_i^l$, respectively. For computational efficiency, $\tilde{\mathbf{q}}_i^l$, $\tilde{\mathbf{k}}_i^l$, and $\tilde{\mathbf{v}}_i^l$ have a relatively low dimension compared to the dimension of hidden states. The task extraction process can be formulated as:

$$\mathbf{c}_i^l = f(\tilde{\mathbf{q}}_i^l; \mathbf{W}_i^l), \quad (2)$$

where $f(\tilde{\mathbf{q}}_i^l; \mathbf{W}_i^l)$ is a meta function modeled by a neural network that takes $\tilde{\mathbf{q}}_i^l$ as input and uses \mathbf{W}_i^l as the network's test-time-changeable parameters. In order to update the fast parameters \mathbf{p}_i^l , we propose the Cross-Layer Online Gradient Descent (CL-OGD) algorithm. CL-OGD guides Nirvana to update $f(\cdot; \mathbf{W}_i^l)$ at the test time by minimizing the following loss function:

$$\mathcal{L}_i^l = \|f(\tilde{\mathbf{k}}_i^l; \mathbf{W}_i^l) - \tilde{\mathbf{v}}_i^l\|_2^2. \quad (3)$$

Since the parameters of $f(\cdot; \mathbf{W}_i^l)$ are decided by \mathbf{p}_i^l according to Equation 1, updating $f(\cdot; \mathbf{W}_i^l)$ in CL-OGD is equivalent to updating the fast parameters \mathbf{p}_i^l at the test time, which can be formulated as:

$$\Delta \mathbf{p}_i^l = \frac{\partial \mathcal{L}_i^l}{\partial \mathbf{W}_i^l} \frac{\partial \mathbf{W}_i^l}{\partial \mathbf{p}_i^l} = \frac{\partial \mathcal{L}_i^l}{\partial \mathbf{W}_i^l} \frac{\partial g(\mathbf{p}_i^l; \mathbf{W}^{\text{bank}})}{\partial \mathbf{p}_i^l}, \quad (4)$$

$$\mathbf{p}_i^l = \mathbf{p}_i^{l-1} - \eta_i^l \Delta \mathbf{p}_i^l, \quad (5)$$

where η_i^l is the adaptive online learning rate, defined as $\eta_i^l = \eta_{\text{ref}} \sigma(\boldsymbol{\theta}_l^\top \mathbf{h}_i^l)$ with $\boldsymbol{\theta}_l$ denoting a learnable projection vector and \mathbf{h}_i^l denoting the hidden state before QKV projection. The function

$\sigma(\cdot)$ denotes the Sigmoid function, and η_{ref} is a reference learning rate. In Nirvana, task-relevant information in the hidden states is extracted only after several prelude layers. Accordingly, in the first post-prelude layer, \mathbf{p}_i^0 is initialized as an all-1 vector for each token.

Since the hidden states vary in magnitude in different layers, we use Layer Normalization (LN) in $f(\mathbf{x}; \mathbf{W})$ for better stability. To realize the relatively low computational complexity, $f(\mathbf{x}; \mathbf{W})$ contains a linear layer, an LN operation, and a residual connection, i.e., $f(\mathbf{x}; \mathbf{W}) = \mathbf{x} + \text{LN}(f_{\text{linear}}(\mathbf{x}; \mathbf{W})) = \mathbf{x} + \text{LN}(\mathbf{W}_{\text{linear}}\mathbf{x} + \mathbf{b}_{\text{linear}})$. For the simplicity of calculation and for the ease of back propagation, we design a weight sharing mechanism that allows for the reuse of the same weight across different layers and tokens. The weight sharing mechanism is implemented through a learnable weight bank \mathbf{W}^{bank} that stores the shared weight parameters across different layers and tokens. The function $g(\mathbf{p}_i^l; \mathbf{W}^{\text{bank}})$ is formulated as:

$$g(\mathbf{p}_i^l; \mathbf{W}^{\text{bank}}) = \sum_{k=1}^K \mathbf{p}_i^l(k) \mathbf{W}^{\text{bank}}(k), \quad (6)$$

where $\mathbf{p}_i^l(k)$ denotes the k -th element of \mathbf{p}_i^l and $\mathbf{W}^{\text{bank}}(k)$ denotes the k -th block of \mathbf{W}^{bank} , respectively. Compared to the hidden states \mathbf{h}_i^l , \mathbf{p}_i^l has a much smaller dimension (e.g., $K = 64$), enabling efficient parameter transfer across layers. Besides, \mathbf{p}_i^l is updated according to Equation 4 with the gradient computed as:

$$\frac{\partial g(\mathbf{p}_i^l; \mathbf{W}^{\text{bank}})}{\partial \mathbf{p}_i^l} = [\text{vec}\{\mathbf{W}^{\text{bank}}(1)\}, \dots, \text{vec}\{\mathbf{W}^{\text{bank}}(K)\}]. \quad (7)$$

Since task information is inherently high-level and difficult to extract within the early layers of Nirvana, we designate the first N_{pre} layers as prelude layers, which operate without the Trigger and are not involved in task-information extraction. These prelude layers use only linear attention, while SWA is introduced in the subsequent post-prelude layers. Because standard linear attention architectures (e.g., Gated DeltaNet, Mamba2) are already capable of capturing position-dependent structure in the input sequence (Yang et al., 2025), there is no need to apply Rotary Positional Embedding (RoPE) (Su et al., 2024) before SWA. Incorporating RoPE at

Model	Wiki. ppl ↓	LMB. ppl ↓	LMB. acc ↑	PIQA acc ↑	Hella. acc_n ↑	Wino. acc ↑	ARC-e acc ↑	ARC-c acc_n ↑	SIQA acc ↑	BoolQ acc ↑	Avg. ↑
Transformer++	18.53	18.32	42.60	70.02	50.23	53.51	68.83	35.10	40.66	57.09	52.25
RetNet	19.08	17.27	40.52	70.07	49.16	54.14	67.34	33.78	40.78	60.39	52.02
HGRN2	19.10	17.69	39.54	70.45	49.53	52.80	69.40	35.32	40.63	56.66	51.79
Mamba	17.92	15.06	43.98	71.32	52.91	52.95	69.52	35.40	37.76	61.13	53.12
Mamba2	16.56	12.56	45.66	71.87	55.67	55.24	72.47	37.88	40.20	60.13	54.89
DeltaNet	17.71	16.88	42.46	70.72	50.93	53.35	68.47	35.66	40.22	55.29	52.14
Gated DeltaNet	16.42	12.17	46.65	72.25	55.76	57.45	71.21	38.39	40.63	60.24	55.32
Samba	16.13	13.29	44.94	70.94	53.42	55.56	68.81	36.17	39.96	62.11	54.00
Gated DeltaNet-H1	16.07	12.12	47.73	72.57	56.53	58.40	71.75	40.10	41.40	63.21	56.40
Gated DeltaNet-H2	15.91	12.55	48.76	72.19	56.88	57.77	71.33	39.07	41.91	61.55	56.18
Nirvana-noTrigger	16.60	12.25	49.40	73.12	57.43	59.27	68.80	37.84	41.50	54.68	55.26
Nirvana (Ours)	16.05	11.56	50.37	73.67	58.25	59.48	69.92	39.51	41.62	59.27	56.51

Table 2: Language modeling and zero-shot common sense reasoning performance of 1.3B models.

this stage would introduce unnecessary computation and could weaken the model’s ability to extrapolate to context lengths beyond those seen during training. Additional experiments and comparisons regarding RoPE are provided in Appendix C.

The outputs of the SWA and the linear attention module are integrated by a conditional interpolation mechanism. Let the output of the SWA module be denoted by \mathbf{a}_i^l and the output of the linear attention module be denoted by \mathbf{b}_i^l . The conditional interpolation mechanism is defined as

$$v_i^l = t_i^l \mathbf{a}_i^l + (1 - t_i^l) \mathbf{b}_i^l + \zeta(\mathbf{a}_i^l, \mathbf{b}_i^l, \mathbf{c}_i^l), \quad (8)$$

where $t_i^l \in (0, 1)$ is a task-dependent scalar that controls the interpolation between the outputs of the two modules. Specifically, t_i^l is computed as $t_i^l = \sigma(\mathbf{u}_i^\top \mathbf{c}_i^l)$, where \mathbf{u}_i is a learnable projection column vector. Besides, $\zeta(\mathbf{a}_i^l, \mathbf{b}_i^l, \mathbf{c}_i^l)$ adds a non-linear supplement to the conditional interpolation. Specifically, $\zeta(\mathbf{a}_i^l, \mathbf{b}_i^l, \mathbf{c}_i^l)$ is a two-layer MLP with Swish activation function, and maps the concatenation of $\mathbf{a}_i^l, \mathbf{b}_i^l, \mathbf{c}_i^l$ to a vector at the same length of \mathbf{a}_i^l . In order to make the number of the parameters in $\zeta(\mathbf{a}_i^l, \mathbf{b}_i^l, \mathbf{c}_i^l)$ relatively small, the length of the hidden layer in $\zeta(\mathbf{a}_i^l, \mathbf{b}_i^l, \mathbf{c}_i^l)$ is 1/8 of the length of \mathbf{a}_i^l . The output of the conditional interpolation module, v_i^l , is then passed into the subsequent RMSNorm and Feed-Forward Network (FFN).

4 Experiments

In experiments, we employ Gated DeltaNet (Yang et al., 2025) in the linear attention part of Nirvana, due to the outstanding performance of Gated DeltaNet in language modeling tasks. We train Nirvana from scratch with a training context window of length 4096 and a global batch size of 0.5M

tokens. We use a model size of 1.3B parameters and train the model on 100B tokens sampled from the FineWeb dataset (Penedo et al., 2024). The window length of SWA in Updater is set as 2048. We employ the AdamW optimizer (Loshchilov and Hutter, 2017) and a hybrid learning rate schedule of linear warm-up (the first 1B tokens) followed by the cosine decay, reaching a peak learning rate of 4×10^{-4} . We utilize the LLaMA-2 tokenizer with a vocabulary size of 32,000. Training is conducted on 64 NVIDIA A800 GPUs. In evaluation, perplexity (ppl), accuracy (acc), and normalized accuracy (acc_n) are measured with held-out test data on 8 NVIDIA A800 GPUs. We also conduct the ablation study, where Nirvana-noTrigger refers to the Nirvana model without Trigger extracting the task-related information.

4.1 General Language Modeling

4.1.1 Performance Comparison

In Table 2, we report the models’ language modeling performance using ppl on 2 datasets: Wikitext (Wiki.) and LAMBADA (LMB.), and we also evaluate the models’ zero-shot common sense reasoning performance using acc and acc_n on 8 datasets: LAMBADA (LMB.), PIQA, HellaSwag (Hella.), WinoGrande (Wino.), ARC-easy (ARC-e), ARC-challenge (ARC-c), SIQA, and BoolQ. On Wiki. dataset, Nirvana achieves a ppl of 16.05, which is slightly higher than the SOTA model (15.91, Gated DeltaNet-H2). Notably, on LMB. dataset, Nirvana achieves a ppl of 11.56, which is better than the SOTA model (12.12, Gated DeltaNet-H1). On common sense reasoning tasks, Nirvana outperforms all the other models and achieves the highest accuracy on LMB., PIQA, Hella., and Wino. datasets. The

Model	S-NIAH-PK			S-NIAH-N			S-NIAH-W			Avg.
	2K	4K	8K	2K	4K	8K	1K	2K	4K	
Transformer++	100.0	100.0	62.6	100.0	100.0	59.4	100.0	100.0	98.6	91.2
Mamba2	98.6	61.4	31.0	98.4	55.8	14.2	62.2	42.2	4.2	52.0
DeltaNet	96.8	98.8	98.6	47.2	15.4	12.8	85.2	46.2	20.0	57.9
Gated DeltaNet	89.8	91.4	90.0	99.2	91.8	26.4	86.4	82.6	24.4	75.8
TTT	98.4	98.8	98.0	60.2	36.6	10.2	85.8	78.8	28.0	66.1
Samba	98.8	98.0	97.4	98.8	98.6	96.2	97.4	96.8	90.0	96.9
Gated DeltaNet-H2	99.2	97.8	97.4	98.0	97.8	96.2	98.0	97.4	96.8	97.6
Nirvana-noTrigger	99.6	99.6	99.0	99.8	99.8	98.8	99.0	97.4	94.8	98.6
Nirvana (Ours)	100.0	100.0	100.0	100.0	100.0	99.6	98.8	97.8	95.4	99.1

Table 3: S-NIAH performance of 1.3B models. S-NIAH-PK, S-NIAH-N, and S-NIAH-W are 3 tasks for single pass-key retrieval in a haystack, single number in a haystack, and single word in a haystack, respectively. All models are trained with 4K context length.

performances of Nirvana on ARC-e, ARC-c, SIQA, and BoolQ are slightly worse than the SOTA models, but are still comparable. Moreover, Nirvana achieves the highest average accuracy on common sense reasoning tasks. In ablation study, the performance of Nirvana is better than Nirvana-noTrigger in terms of the average accuracy.

We evaluate Nirvana on Single Needle-In-A-Haystack (S-NIAH) benchmark with different context lengths according to RULER (Hsieh et al., 2024). In Table 3, Nirvana outperforms all the other models in S-NIAH-PK and S-NIAH-N, and achieves the highest average accuracy. Particularly, in S-NIAH-PK (2K, 4K, and 8K context length) and in S-NIAH-N (2K and 4K context length), Nirvana achieves 100% accuracy, remarkably higher than most of the existing models. When trained with 4K context length and tested with 8K context length, Transformer++ does not perform well due to its relatively poor extrapolation ability. However, Nirvana maintains its superior performance with 8K context length, which illustrates its solid extrapolation capability. Notably, Nirvana-noTrigger performs worse than Nirvana, but is still better than other models on the average accuracy.

4.1.2 Inference Efficiency

To quantify the computational complexity, we report the inference speed of all 1.3B models at a prompt length of 4096 tokens in Table 4. Among all non-ablated models, Nirvana achieves the highest inference speed at 516 tokens/s, outperforming Samba (497 tokens/s), Gated DeltaNet (461 tokens/s), and Mamba2 (413 tokens/s), while substantially exceeding the classical Transformer++ baseline (191 tokens/s). Nirvana-noTrigger achieves

Model	Inference Speed (tokens/s)
Transformer++	191
Mamba2	413
Gated DeltaNet	461
Samba	497
Nirvana-noTrigger	568
Nirvana	516

Table 4: Inference speed of 1.3B models at prompt sequence length 4096, with batchsize = 4.

the highest inference speed at 568 tokens/s, but its slight advantage over full Nirvana comes with a substantial performance drop consistently observed across the earlier and later ablation experiments, clearly demonstrating the essential role of Trigger. Since Trigger operates on a compact 64-dimensional space, it adds only a negligible linear-time cost. Moreover, Updater’s SWA and linear attention modules maintain linear complexity, yielding faster inference than both Mamba2 and full-attention baselines. When combined with the accuracy gains in other experiments, these findings indicate that Nirvana improves model performance while simultaneously offering the best inference efficiency among the evaluated baselines.

4.2 Specialized Ability Evaluation

4.2.1 Performance in Specialized Domains: Biomedicine, Finance, and Law

In order to assess performance in specialized domains, we evaluate various 1.3B models, including the ablated Nirvana-noTrigger, on three specialized corpora: (1) biomedical text from MIMIC-III

Model	Biomedicine	Finance	Law	Avg.
Transformer++	9.28	10.70	8.82	9.60
Mamba2	9.13	9.97	9.07	9.39
Gated DeltaNet	9.02	9.72	8.89	9.21
Samba	9.27	9.50	8.74	9.17
Nirvana-noTrigger	9.19	9.87	8.84	9.30
Nirvana	8.25	7.88	7.22	7.78

Table 5: Perplexity of 1.3B models on three specialized domains. Lower is better.

clinical notes (Johnson et al., 2016), (2) financial news from April 2024 to October 2024 utilized in FinGPT (Liu et al., 2023), and (3) legal documents from the Asylex refugee-status corpus (Barale et al., 2023). All models are fine-tuned for 3 epochs on each domain. As shown in Table 5, Nirvana achieves the lowest perplexity in every domain and the best overall average of 7.78, substantially outperforming Transformer++, Mamba2, Gated DeltaNet, and Samba, whose averages range from 9.17 to 9.60. Importantly, the ablated Nirvana-noTrigger performs similarly to strong baselines but remains noticeably weaker than full Nirvana across all three domains, with an average perplexity gap of over 1.5 points. This consistent discrepancy highlights the essential role of Trigger in enabling Nirvana to adapt effectively to specialized-domain distributions, demonstrating that Trigger materially enhances domain-specific modeling beyond what the backbone alone can achieve.

4.2.2 MRI Reconstruction and Report Generation

MRI reconstruction is a clinically important yet technically challenging task that seeks to improve image quality while reducing scan time, making it a rigorous benchmark for evaluating Nirvana’s specialized capabilities. In this setting, Nirvana receives raw multi-coil k-space measurements along with an instruction prompt, and outputs both reconstructed image tokens and analysis tokens. To map k-space data into Nirvana’s embedding space, we employ a multi-coil Variational Network (VarNet) (Giannakopoulos et al., 2024) followed by a lightweight ViT (Yuan et al., 2021), collectively serving as the k-space encoder. The encoder extracts k-space features and generates k-space tokens, which are concatenated with the instruction prompt and processed by Nirvana to generate image tokens and analysis tokens. A U-Net-based image decoder then converts the image tokens into

the final reconstructed MRI images. To mitigate instability caused by the limited amount of k-space data, we apply layer normalization before both the k-space encoder and the image decoder.

During post-training for MRI reconstruction, the language backbone of the 1.3B Nirvana model remains frozen, while training is applied solely to the k-space encoder and image decoder. The post-training process comprises two sequential stages. In the first stage, we only train the k-space encoder guided by the cross-entropy loss of only the generated MRI analysis tokens. After the k-space encoder is trained until convergence, we freeze the k-space encoder as well as the Nirvana backbone, such that the training in the second stage does not influence Nirvana’s performance on MRI analysis. We then only train the image decoder with the MRI image reconstruction loss. Following (Giannakopoulos et al., 2024; Jatyani et al., 2025), the model minimizes the Structural Similarity Index Measure (SSIM) (Sriram et al., 2020) loss between the reconstructed image \hat{x} and the ground truth image x^* in the second stage:

$$\mathcal{L}_2(\hat{x}, x^*) = -\text{SSIM}(\hat{x}, x^*). \quad (9)$$

To evaluate the performance of Nirvana for MRI reconstruction, we use the FastMRI dataset (Zbontar et al., 2018). FastMRI dataset provides paired k-space signals and MRI images that can be directly used in the second post-training stage. In the first post-training stage, we create a list of possible instruction prompts, such as “According to the k-space signals, are there any pathological features?” The ground truth analysis of the MRI images corresponding to the instruction prompt is generated by the Lingshu Model (Xu et al., 2025).

MRI reconstruction is greatly limited by a slow data acquisition process, which sometimes requires patients to remain still for an hour (Chen et al., 2022; Singh et al., 2023). Thus, it is essential to accelerate the MRI scan by undersampling in the scanning process. Following (Zbontar et al., 2018; Giannakopoulos et al., 2024; Jatyani et al., 2025), we undersample the k-space signals in the frequency domain to accelerate MRI acquisition while reducing the amount of data to be processed. Detailed configurations are shown in Appendix E.

We compare the MRI reconstruction performance of 1.3B Nirvana with other 1.3B LLMs across different undersampling rates in Figure 2. All models are pretrained on FineWeb and post-trained with the frozen backbone using the same

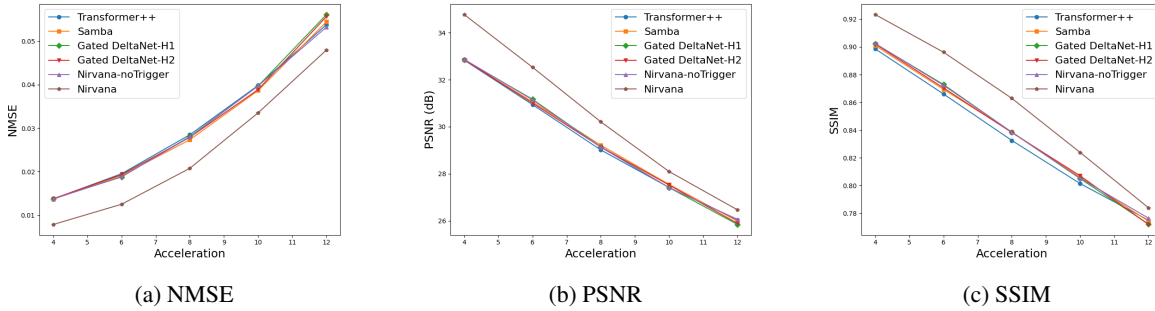


Figure 2: MRI reconstruction performance comparison between Nirvana and conventional LLMs with 160M trainable parameters in the k-space encoder and the image decoder. The acceleration rate is equivalent to the undersampling rate.

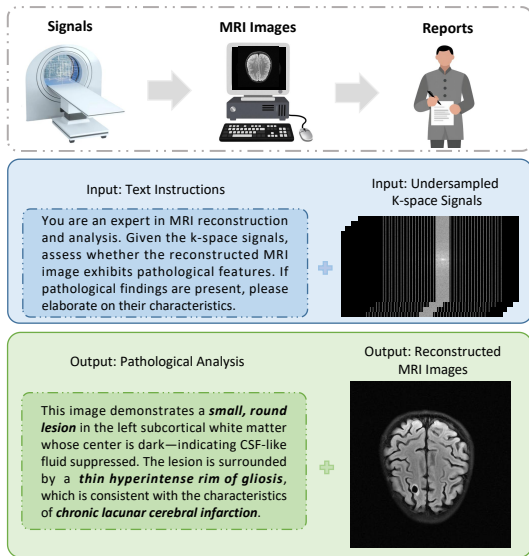


Figure 3: The overall process of MRI reconstruction and report generation by Nirvana.

procedure described at the beginning of Section 4.2.2. Nirvana consistently achieves higher reconstruction fidelity across all settings. In the ablation study, Nirvana-noTrigger shows substantially degraded performance, highlighting the critical role of Trigger in enabling effective adaptation for MRI reconstruction.

We show an example of the overall MRI reconstruction and report generation by Nirvana in Figure 3. Nirvana takes the undersampled k-space signals and the instruction prompt as input, and outputs the reconstructed MRI image as well as the corresponding analysis. In contrast with traditional MRI report generation models (such as Lingshu (Xu et al., 2025), HealthGPT (Lin et al., 2025), and MedGemma (Sellergren et al., 2025)) which directly take the reconstructed MRI image as input, Nirvana takes the k-space signals undersampled

from the raw signals received by the coils as input to generate the overall MRI report, including the reconstructed image. In Figure 3, the report generated by Nirvana accurately captures the important pathological features of the image, including the lesion’s shape, size, position, and surrounding matter. Moreover, the report provides further diagnosis that the reconstructed MRI image is consistent with the characteristics of chronic lacunar cerebral infarction. More experiment results and analysis of MRI are shown in Appendix E.

5 Conclusion

In this work, we present Nirvana, an SGM with the task-aware memory mechanism. By enabling dynamic interpolation between SWA and linear attention, Updater allows the model to flexibly balance local and global information flow while maintaining computational efficiency. Complementing this, Trigger introduces per-sample self-supervision, allowing Nirvana to adapt to distributional shifts without requiring backbone retraining. Experiments show that Nirvana matches or exceeds strong LLM baselines on general benchmarks, and furthermore achieves the lowest perplexity across specialized domains including biomedicine, finance, and law. In the challenging MRI task, Nirvana yields higher-fidelity reconstructed MRI images than conventional LLM-based models, and it also generates reliable preliminary clinical reports. Importantly, ablation studies reveal that removing Trigger leads to notable performance degradation across all evaluation tasks, demonstrating its essential role in task-aware specialization. These findings indicate that Nirvana can transition smoothly from general language understanding to diverse specialized and high-precision domains.

6 Limitations

We summarize the limitations of Nirvana as follows. First, our current implementation of Nirvana has been mainly evaluated under moderate-scale settings, i.e., 1.3B parameters, and scaling Nirvana to substantially larger model sizes may require further engineering optimizations. However, we believe the core design is orthogonal to system-level optimizations and can benefit from future advances in efficient training and inference. Second, we have not exhaustively explored all architectural variants or hyperparameter configurations. Although we have followed standard design practices, more systematic tuning may further improve performance and stability in different settings. Despite these limitations, we believe our work provides a solid foundation and opens several promising directions for future research. Future work will explore larger model size settings and broader hyperparameter configurations to further assess the capability of Nirvana.

7 Ethical Considerations

Our research has been conducted with a clear commitment to avoiding harm and upholding honesty and transparency in both methodology and reporting. We have made deliberate efforts to identify and mitigate potential biases in data and algorithms to promote fairness. In addition, we have respected individual privacy and ensured full compliance with all relevant regulations and ethical standards governing data use.

References

Simran Arora, Aman Timalsina, Aaryan Singhal, Benjamin Spector, Sabri Eyuboglu, Xinyi Zhao, Ashish Rao, Atri Rudra, and Christopher Ré. 2024. Just read twice: closing the recall gap for recurrent language models. *arXiv preprint arXiv:2407.05483*.

Yushi Bai, Xin Lv, Jiajie Zhang, Hongchang Lyu, Jiankai Tang, Zhidian Huang, Zhengxiao Du, Xiao Liu, Aohan Zeng, and Lei Hou. 2023. Longbench: A bilingual, multitask benchmark for long context understanding. *arXiv preprint arXiv:2308.14508*.

Claire Barale, Michael Rovatsos, and Nehal Bhuta. 2023. Automated refugee case analysis: An nlp pipeline for supporting legal practitioners. *arXiv preprint arXiv:2305.15533*.

Sebastian Borgeaud, Arthur Mensch, and Jordan Hoffmann. 2022. Improving language models by retrieving from trillions of tokens. In *Proceedings of the*

39th International Conference on Machine Learning (ICML). PMLR. 597–598.

Yutong Chen, Carola-Bibiane Schönlieb, Pietro Liò, Tim Leiner, Pier Luigi Dragotti, Ge Wang, Daniel Rueckert, David Firmin, and Guang Yang. 2022. Ai-based reconstruction for fast MRI—a systematic review and meta-analysis. *Proceedings of the IEEE*, 110(2):224–245. 600–604.

William Fedus, Barret Zoph, and Noam Shazeer. 2021. Switch transformers: Scaling to trillion parameter models with simple and efficient sparsity. *arXiv preprint arXiv:2101.03961*. 605–608.

Chelsea Finn, Aravind Rajeswaran, Sham Kakade, and Sergey Levine. 2019. Online meta-learning. In *International conference on machine learning*, pages 1920–1930. PMLR. 610–612.

Ilias I Giannakopoulos, Matthew J Muckley, Jesi Kim, Matthew Breen, Patricia M Johnson, Yvonne W Lui, and Riccardo Lattanzi. 2024. Accelerated MRI reconstructions via variational network and feature domain learning. *Scientific Reports*, 14(1):10991. 613–617.

Neel Guha, Julian Nyarko, Daniel E. Ho, Christopher Ré, Adam Chilton, Aditya Narayana, Alex Chohlas-Wood, Austin Peters, Brandon Waldon, Daniel N. Rockmore, Diego Zambrano, Dmitry Talisman, Enam Hoque, Faiz Surani, Frank Fagan, Galit Sarfaty, Gregory M. Dickinson, Haggai Porat, Jason Hegland, and 21 others. 2023. *Legalbench: A collaboratively built benchmark for measuring legal reasoning in large language models*. *Preprint*, arXiv:2308.11462. 618–627.

Cheng-Ping Hsieh, Simeng Sun, Samuel Krizan, Shantanu Acharya, Dima Rekesh, Fei Jia, Yang Zhang, and Boris Ginsburg. 2024. Ruler: What’s the real context size of your long-context language models? *arXiv preprint arXiv:2404.06654*. 628–632.

Armeet Singh Jatyani, Jiayun Wang, Aditi Chandrashekar, Zihui Wu, Miguel Liu-Schiaffini, Bahareh Tolooshams, and Anima Anandkumar. 2025. A unified model for compressed sensing MRI across under-sampling patterns. In *Proceedings of the Computer Vision and Pattern Recognition Conference*, pages 26004–26013. 633–639.

Albert Q. Jiang, Alexandre Sablayrolles, and Antoine Roux. 2024. Mixtral of experts. *arXiv preprint arXiv:2401.04088*. 640–642.

Carlos E. Jimenez and John Yang. 2023. Swe-bench: Can language models resolve real-world github issues? *arXiv preprint arXiv:2310.06770*. 643–645.

Alistair E. W. Johnson, Tom J. Pollard, Lu Shen, Liwei H. Lehman, Mengling Feng, Mohammad Ghassemi, Benjamin Moody, Peter Szolovits, Leo Anthony Celi, and Roger G. Mark. 2016. MIMIC-III, a freely accessible critical care database. *Scientific Data*, 3(1):1–9. 646–651.

652	Urvashi Khandelwal, Angela Fan, Dan Jurafsky, and Luke Zettlemoyer. 2019. Generalization through memorization: Nearest neighbor language models. <i>arXiv preprint arXiv:1911.00172</i> .	706
653		707
654		708
655		709
656	Dmitry Lepikhin, HyoukJoong Lee, and Yuanzhong Xu. 2020. Gshard: Scaling giant models with conditional computation and automatic sharding. <i>arXiv preprint arXiv:2006.16668</i> .	710
657		711
660	Patrick Lewis, Ethan Perez, and Aleksandra Piktus. 2020. Retrieval-augmented generation for knowledge-intensive nlp. <i>arXiv preprint arXiv:2005.11401</i> .	712
661		713
662		714
663		715
664	Percy Liang and Rishi Bommasani. 2022. Holistic evaluation of language models. <i>arXiv preprint arXiv:2211.09110</i> .	716
665		717
666		718
667	Opher Lieber, Barak Lenz, Hofit Bata, Gal Cohen, Jhonathan Osin, Itay Dalmedigos, Erez Safahi, Shaked Meir, Yonatan Belinkov, and Shai Shalev-Shwartz. 2024. Jamba: A hybrid transformer-mamba language model. <i>arXiv preprint arXiv:2403.19887</i> .	719
668		720
669		721
670		722
671		723
672	Tianwei Lin, Wenqiao Zhang, Sijing Li, Yuqian Yuan, Binhe Yu, Haoyuan Li, Wangui He, Hao Jiang, Mengze Li, and Xiaohui Song. 2025. Healthgpt: A medical large vision-language model for unifying comprehension and generation via heterogeneous knowledge adaptation. <i>arXiv preprint arXiv:2502.09838</i> .	724
673		725
674		726
675		727
676		728
677		729
678		730
679	Xiao-Yang Liu, Guoxuan Wang, Hongyang Yang, and Daochen Zha. 2023. Data-centric fingpt: Democratizing internet-scale data for financial large language models. In <i>NeurIPS Workshop on Instruction Tuning and Instruction Following</i> . 2023a.	731
680		732
681		733
682		734
683		735
684	Ilya Loshchilov and Frank Hutter. 2017. Fixing weight decay regularization in adam. <i>arXiv preprint arXiv:1711.05101</i> , 5(5):5.	736
685		737
686		738
687	Guilherme Penedo, Hynek Kydlíček, Anton Lozhkov, Margaret Mitchell, Colin Raffel, Leandro Von Werra, and Thomas Wolf. 2024. The fineweb datasets: Decanting the web for the finest text data at scale. <i>Advances in Neural Information Processing Systems</i> , 37:30811–30849.	739
688		740
689		741
690		742
691		743
692		744
693	Liliang Ren, Yang Liu, Yadong Lu, Yelong Shen, Chen Liang, and Weizhu Chen. 2024. Samba: Simple hybrid state space models for efficient unlimited context language modeling. <i>arXiv preprint arXiv:2406.07522</i> .	745
694		746
695		747
696		748
697		749
698	Timo Schick, Jane Dwivedi-Yu, and Roberto Dessi. 2023. Toolformer: Language models can teach themselves to use tools. <i>arXiv preprint arXiv:2302.04761</i> .	750
699		751
700		752
701	Andrew Sellergren, Sahar Kazemzadeh, Tiam Jaroensri, Atilla Kiraly, Madeleine Traverse, Timo Kohlberger, Shawn Xu, Fayaz Jamil, Cían Hughes, and Charles Lau. 2025. Medgemma technical report. <i>arXiv preprint arXiv:2507.05201</i> .	753
702		754
703		755
704		756
705		757
		758
	Dilbag Singh, Anmol Monga, Hector L de Moura, Xiaoxia Zhang, Marcelo VW Zibetti, and Ravinder R Regatte. 2023. Emerging trends in fast MRI using deep-learning reconstruction on undersampled k-space data: a systematic review. <i>Bioengineering</i> , 10(9):1012.	
	Anuroop Sriram, Jure Zbontar, Tullie Murrell, Aaron Defazio, C Lawrence Zitnick, Nafissa Yakubova, Florian Knoll, and Patricia Johnson. 2020. End-to-end variational networks for accelerated MRI reconstruction. In <i>International conference on medical image computing and computer-assisted intervention</i> , pages 64–73. Springer.	
	Aarohi Srivastava. 2022. Beyond the imitation game: Quantifying and extrapolating the capabilities of language models. <i>arXiv preprint arXiv:2206.04615</i> .	
	Jianlin Su, Murtadha Ahmed, Yu Lu, Shengfeng Pan, Wen Bo, and Yunfeng Liu. 2024. Roformer: Enhanced transformer with rotary position embedding. <i>Neurocomputing</i> , 568:127063.	
	Yu Sun, Xinhao Li, Karan Dalal, Jiarui Xu, Arjun Vikram, Genghan Zhang, Yann Dubois, Xinlei Chen, Xiaolong Wang, Sanmi Koyejo, Hashimoto Tatsunori, and Guestrin Carlos. 2024. Learning to (learn at test time): RNNs with expressive hidden states. <i>arXiv preprint arXiv:2407.04620</i> .	
	Jamba Team, Barak Lenz, Alan Arazi, Amir Bergman, Avshalom Manevich, Barak Peleg, Ben Aviram, Chen Almagor, Clara Fridman, and Dan Padnos. 2024. Jamba-1.5: Hybrid transformer-mamba models at scale. <i>arXiv preprint arXiv:2408.12570</i> .	
	Joaquin Vanschoren. 2019. Meta-learning. In <i>Automated machine learning: methods, systems, challenges</i> , pages 35–61. Springer International Publishing Cham.	
	Ashish Vaswani, Noam Shazeer, Niki Parmar, Jakob Uszkoreit, Llion Jones, Aidan N Gomez, Łukasz Kaiser, and Illia Polosukhin. 2017. Attention is all you need. In <i>Advances in neural information processing systems</i> , pages 5998–6008.	
	Anna Vettoruzzo, Mohamed-Rafik Bouguelia, Joaquin Vanschoren, Thorsteinn Rögnvaldsson, and KC Santosh. 2024. Advances and challenges in meta-learning: A technical review. <i>IEEE transactions on pattern analysis and machine intelligence</i> , 46(7):4763–4779.	
	Z. Wang and J. Sun. 2025. A perspective for adapting generalist ai to specialized medical ai applications and their challenges. <i>npj Digital Medicine</i> .	
	Yuhuai Wu, Markus N. Rabe, DeLesley Hutchins, and Christian Szegedy. 2022. Memorizing transformers. In <i>International Conference on Learning Representations (ICLR)</i> .	

759	Weiwen Xu, Hou Pong Chan, Long Li, Mahani Aljunied, Ruifeng Yuan, Jianyu Wang, Chenghao Xiao, Guizhen Chen, Chaoqun Liu, and Zhaodonghui Li. 2025. Lingshu: A generalist foundation model for unified multimodal medical understanding and reasoning. <i>arXiv preprint arXiv:2506.07044</i> .	
760		
761		
762		
763		
764		
765	Songlin Yang, Jan Kautz, and Ali Hatamizadeh. 2025. Gated delta networks: Improving mamba2 with delta rule. <i>arXiv preprint arXiv:2412.06464</i> .	
766		
767		
768	Shunyu Yao, Jeffrey Zhao, and Dian Yu. 2023. React: Synergizing reasoning and acting in language models. In <i>International Conference on Learning Representations (ICLR)</i> .	
769		
770		
771		
772	Li Yuan, Yunpeng Chen, Tao Wang, Weihao Yu, Yujun Shi, Zi-Hang Jiang, Francis EH Tay, Jiashi Feng, and Shuicheng Yan. 2021. Tokens-to-token ViT: Training vision transformers from scratch on imagenet. In <i>Proceedings of the IEEE/CVF international conference on computer vision</i> , pages 558–567.	
773		
774		
775		
776		
777		
778	Jure Zbontar, Florian Knoll, Anuroop Sriram, Tullie Murrell, Zhengnan Huang, Matthew J Muckley, Aaron Defazio, Ruben Stern, Patricia Johnson, and Mary Bruno. 2018. FastMRI: An open dataset and benchmarks for accelerated MRI. <i>arXiv preprint arXiv:1811.08839</i> .	
779		
780		
781		
782		
783		
784	Kaiyan Zhang, Biqing Qi, and Bowen Zhou. 2024. Towards building specialized generalist ai with system 1 and system 2 fusion. <i>arXiv preprint arXiv:2407.08642</i> .	
785		
786		
787		
	Appendices	788
	A Reproducibility Statement	789
	In this paper, we present a novel SGM called Nirvana. To guarantee that our work can be easily reproduced and built upon by the research community, we have taken the following key steps. First, the source code implementing our method is available as part of the supplementary materials. The code includes all scripts necessary for training and evaluating Nirvana, while pretrained models will be released after the reviewing process. Experimental settings and hyperparameters are available in our experiments and appendices. We use publicly available datasets for training and evaluation, and details are reported in the experiments. Finally, we also provide information about the hardware environment used in our experiments.	790 791 792 793 794 795 796 797 798 799
	We provide open-source code to reproduce our experiments at the following anonymous repository: https://anonymous.4open.science/r/Nirvana-SGM .	800 801 802 803 804 805
	B Statement for Use of LLMs	806 807 808 809
	LLMs were only used to assist with language polishing in certain sections of this paper.	810 811
	C Experiments Related to RoPE	812
	We investigate whether adding RoPE (Su et al., 2024) in SWA enhances the model’s capability or not, where Nirvana-RoPE refers to the Nirvana model with RoPE added to the query and key in SWA modules. We first conduct experiments on NIAH in Table 6. Note that if RoPE is added to the SWA module, Nirvana-RoPE will be drastically worse than Nirvana without RoPE in 8K context length, with an accuracy of only 0.2% on S-NIAH-PK and an accuracy of only 4.4% on S-NIAH-N. This illustrates the importance of removing RoPE in SWA modules, which can lead to degraded performance when the context length at the test time is larger than that at the training time.	813 814 815 816 817 818 819 820 821 822 823 824 825 826
	We conduct experiments on language modeling and zero-shot common sense reasoning in Table 7. The results illustrate that adding RoPE does not make Nirvana’s performance better on average accuracy. The reason is that the linear attention architectures (e.g., Gated DeltaNet and Mamba2) are well qualified to capture the position-dependent information of the input sequence (Yang et al., 2025). Thus, there is no need to use RoPE in SWA, which	827 828 829 830 831 832 833 834 835

Model	S-NIAH-PK			S-NIAH-N			S-NIAH-W			Avg.
	2K	4K	8K	2K	4K	8K	1K	2K	4K	
Nirvana-RoPE	100.0	100.0	0.2	100.0	100.0	4.4	100.0	97.0	92.8	77.2
Nirvana (Ours)	100.0	100.0	100.0	100.0	100.0	99.6	98.8	97.8	95.4	99.1

Table 6: S-NIAH performance of 1.3B Nirvana with or without RoPE. S-NIAH-PK, S-NIAH-N, and S-NIAH-W are 3 tasks for the pass-key retrieval in a haystack, number in a haystack, and word in a haystack, respectively. Both models are trained with 4K context length.

Model	Wiki. ppl ↓	LMB. ppl ↓	LMB. acc ↑	PIQA acc ↑	Hella. acc_n ↑	Wino. acc ↑	ARC-e acc ↑	ARC-c acc_n ↑	SIQA acc ↑	BoolQ acc ↑	Avg. ↑
Nirvana-RoPE	18.01	12.13	49.97	73.71	58.17	58.43	68.90	38.86	41.15	59.33	56.07
Nirvana (Ours)	17.57	11.56	50.37	73.67	58.25	59.48	68.92	38.51	41.62	59.27	56.26

Table 7: Language Modeling and Zero-Shot Common Sense Reasoning Performance of 1.3B Nirvana with or without RoPE.

would otherwise require additional computation and undermine the model’s ability to extrapolate with context lengths longer than the training data.

D Supplementary Language Modeling Ability

We evaluate model performance on LongBench (Bai et al., 2023), a comprehensive suite of long-context tasks spanning retrieval, reasoning, multi-document understanding, and in-context learning. As shown in Table 8, Nirvana achieves consistent improvements across most categories—including NQA, HQA, 2WM, Mus, GvR, MNs, and TQA. These results highlight Nirvana’s strengthened abilities in long-range retrieval, efficient in-context learning, and robust state tracking, demonstrating its effectiveness not only in general domains but also in specialized long-context understanding.

As shown in Figure 4, we evaluate the models’ capacity of extrapolating to sequences from 4K to 20K tokens across three long-context benchmarks, i.e., NarrativeQA, QMSum, and GovReport (Bai et al., 2023). Nirvana achieves the lowest overall perplexity across different tasks among all models. Besides, Nirvana without Trigger is also evaluated in Figure 4, and its performance is not as good as that of Nirvana. While we observe performance fluctuations when the context length becomes longer, Nirvana exhibits relatively more stable performance, which indicates that Nirvana is robust and has superiority in length-extrapolation tasks. We will explore Nirvana’s capabilities on even longer sequences in the future.

In Table 9, we present the models’ accuracy

on real-world recall-intensive tasks (Arora et al., 2024). Due to the limitations of linear attention, recurrent models show a significant performance gap compared to Transformers++, while Nirvana outperforms Transformers++ and achieves comparable performance with SOTA hybrid models in retrieval-intensive tasks. Without Trigger, Nirvana’s performance will be notably degraded because of the lack of crucial task-aware memory management mechanism.

E Specialized Ability of MRI Reconstruction

In MRI reconstruction, we undersample the k-space signals to accelerate the MRI coil scanning process in the frequency domain, and at the same time also reduce the amount of data to be processed (Zbontar et al., 2018; Giannakopoulos et al., 2024; Jatyani et al., 2025). The detailed k-space undersampling configurations are shown in Table 10.

We compare the performance of Nirvana for MRI reconstruction with other baselines under different undersampling rates in Figure 5. The MRI reconstruction performances of all models degrade when the undersampling rate becomes larger, because less information is provided in the higher-rate undersampled k-space signals. Nirvana surpasses the other models under all undersampling rates, and the Nirvana’s performance degradation trend is the least significant as the undersampling rate becomes larger. This illustrates the potential advantage of Nirvana, which can use highly undersampled k-space signals to reconstruct the image while maintaining the same or even better image quality

Models	Single-Doc QA			Multi-Doc QA			Summarization			Few-shot			Code		Avg
	NQA	QQA	MFQ	HQA	2WM	Mus	GvR	QMS	MNs	TRC	TQA	SSM	LCC	RBP	
Recurrent models															
RetNet	12.1	10.7	19.1	10.7	18.0	5.8	4.8	15.8	7.9	19.0	18.0	12.8	14.1	17.9	13.2
HGRN2	10.7	12.1	19.1	11.3	15.7	6.0	5.2	15.1	9.2	16.0	15.8	10.3	18.6	20.8	13.5
Mamba	13.0	10.1	20.4	10.1	16.7	6.0	7.2	15.9	8.4	23.1	21.9	11.2	17.9	19.0	14.6
DeltaNet	12.9	10.8	21.5	10.9	13.2	5.1	6.5	13.5	7.2	15.5	23.3	11.6	17.6	20.3	13.6
Mamba2	11.1	11.3	18.6	11.8	15.1	6.7	6.7	14.5	7.4	13.0	23.6	8.4	17.9	20.6	13.5
Gated DeltaNet	14.1	14.0	23.3	13.7	14.4	5.8	7.5	16.4	7.9	30.0	22.4	23.0	18.7	22.1	16.6
Attention or hybrid models															
Transformer++	11.8	9.3	10.0	10.9	4.2	6.1	7.4	15.8	6.6	16.9	13.5	3.9	17.2	18.7	11.0
Samba	12.5	12.9	25.4	11.2	19.7	6.8	9.1	15.7	11.0	20.0	22.7	22.8	18.1	21.1	15.9
Gated DeltaNet-H1	14.5	12.3	26.6	12.6	23.6	6.1	9.1	16.1	12.8	33.5	23.9	26.8	15.5	19.2	17.8
Gated DeltaNet-H2	12.7	13.0	27.1	12.7	20.6	7.5	10.4	16.2	13.0	40.5	22.7	27.9	19.9	22.1	18.4
Nirvana-noTrigger	14.8	11.8	25.6	14.0	23.9	7.7	9.2	15.1	13.5	33.0	21.2	22.9	16.5	20.9	17.9
Nirvana (Ours)	16.6	12.8	26.0	14.6	24.8	9.7	10.4	15.9	15.4	36.4	25.2	22.6	17.5	21.5	19.2

Table 8: Accuracy on 14 tasks from LongBench (Bai et al., 2023), including Narrative QA, QasperQA, MultiField QA, HotpotQA, 2WikiMulti QA, Musique, GovReport, QMSum, MultiNews, TRec, Trivia QA, SamSum, LCC, and RepoBench-P by order.

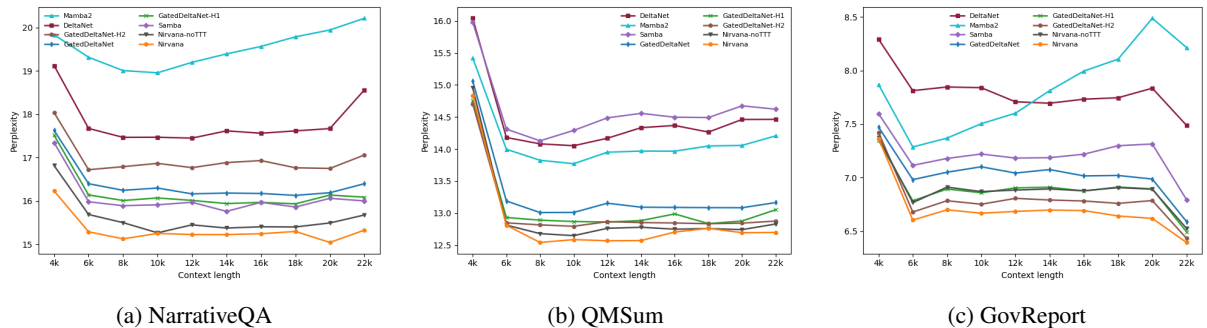


Figure 4: Length extrapolation from 4K to 20K tokens on three long benchmarks.

902 compared to E2E-VarNet and UDNO. Therefore, 926
903 Nirvana has the potential ability to accelerate the 927
904 scanning process of MRI. 928

905 In Table 11, we evaluate the performance of Nir- 929
906 vana for MRI reconstruction using SSIM, PSNR, 930
907 and NMSE, and also compare its performance 931
908 with other baselines, including E2E-VarNet (Gi- 932
909 annakopoulos et al., 2024) and UDNO (Jatyani 933
910 et al., 2025). The undersampling rate is set as 6 934
911 in the test time. As shown in Table 11, Nirvana 935
912 achieves the highest SSIM and PSNR, as well as the 936
913 lowest NMSE on the test set. Besides, Nirvana’s 937
914 performance has the smallest variance and thus the 938
915 highest stability. Specifically, Nirvana achieves an 939
916 average improvement of 0.0405 in SSIM, 2.76 dB 940
917 in PSNR, and 8.974×10^{-3} in NMSE compared 941
918 to the SOTA model UDNO (Jatyani et al., 2025), 942
919 respectively. 943

920 We further visualize Nirvana’s MRI reconstruction 944
921 performance at an undersampling rate of 8 in Figure 6. 945
922 The ground truth, the images reconstructed by E2E-VarNet, 946
923 UDNO, and Nirvana are shown in the 4 columns, respectively. 947
924 As shown in Figure 6, the performance of Nirvana is better

926 than UDNO and E2E-VarNet in terms of the image 927
928 fidelity and resolution. The reconstructed image of 929
929 E2E-VarNet is blurry, and some part of the brain 930
930 is completely obscured by black patches. The re- 931
931 constructed image of UDNO is roughly close to 932
932 the ground truth image, but the resolution is low 933
933 and the details of the image are unclear. However, 934
934 Nirvana delivers the clearest and most accurate 935
935 high-resolution reconstruction, showing the closest 936
936 resemblance to the ground truth and attaining the 937
937 highest SSIM of 0.8812. 938

937 F A Toy Example of Nirvana in 938 938 Combinatorial Tasks

939 To illustrate the effectiveness of Nirvana model, 940
940 we consider a toy example of combinatorial tasks, 941
941 where the model is required to conduct common 942
942 sense reasoning while retrieving the question from 943
943 a haystack. As shown in Figure 7, the haystack 944
944 contains a set of repeated useless information, such 945
945 as "the sky is blue" and "the grass is green". The 946
946 key information, i.e., the question, is "Where is 947
947 the capital of Switzerland?" The model should be

Models	SWDE	SQD	FDA	TQA	NQ	Drop	Avg
Recurrent models							
RetNet	14.0	28.5	7.0	54.4	16.2	17.3	22.9
HGRN2	8.3	25.3	4.8	51.2	14.2	16.9	20.1
Mamba	9.8	25.8	3.7	54.3	14.9	17.4	21.0
Mamba2	19.1	33.6	25.3	61.0	20.8	19.2	29.8
DeltaNet	17.9	30.9	18.4	53.9	17.3	18.6	26.2
Gated DeltaNet	25.4	34.8	23.7	60.0	20.0	19.8	30.6
Attention or hybrid models							
Transformer++	29.5	38.0	52.2	58.3	22.5	21.6	37.0
Samba	33.0	39.2	50.5	57.7	23.5	20.2	37.3
Gated DeltaNet-H1	35.6	39.7	52.0	60.1	24.6	22.2	39.0
Gated DeltaNet-H2	38.2	40.4	50.7	63.3	24.8	23.3	40.1
Nirvana-noTrigger	35.1	39.8	50.5	60.0	22.3	21.7	38.2
Nirvana (Ours)	37.8	41.0	51.1	62.8	24.8	22.9	40.1

Table 9: Accuracy on recall-world retrieval tasks with the input sequences truncated to 2K tokens, where SQD is short for SQUADE, and TQA is short for Trivial QA (Arora et al., 2024).

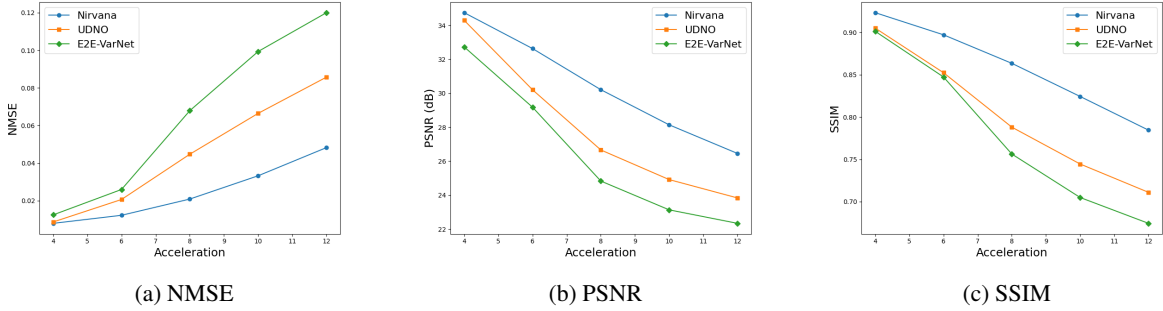


Figure 5: MRI reconstruction performance comparison for models with 160M trainable parameters. The acceleration rate is also the undersampling rate.

Undersampling Rate	Acceleration Rate	Center Fraction Rate
12×	12	0.027
10×	10	0.032
8×	8	0.04
6×	6	0.06
4×	4	0.08

Table 10: The k-space undersampling configurations (acceleration and center fraction parameters) used for MRI reconstruction.

Model	SSIM \uparrow	PSNR (dB) \uparrow	NMSE ($\times 10^{-2}$) \downarrow
E2E-VarNet	0.8540 \pm 0.0418	29.68 \pm 2.99	2.512 \pm 0.742
UDNO	0.8598 \pm 0.0414	30.21 \pm 2.97	2.074 \pm 0.730
Nirvana (Ours)	0.9003 \pm 0.0407	32.97 \pm 2.93	1.176 \pm 0.625

Table 11: MRI reconstruction performance comparison of models with 160M trainable parameters. For Nirvana, the trainable components are the k-space encoder and the MRI decoder. The undersampling rate is set as 6 in this table during the test time.

948 able to retrieve the useful information at the begin-
949 ning of the haystack and then answer the question.
950 The Nirvana model accurately distinguishes the
951 useful question from the useless information and
952 then answers the question correctly. However, both
953 Transformer++ and Gated DeltaNet fail to find the
954 question and are misled to repeat the useless mes-
955 sages instead. This demonstrates the superior perfor-
956 mance of the Nirvana model over Transformer++
957 and Gated DeltaNet in combinatorial tasks of com-

mon sense reasoning and key information retrieval
in long sequences.

958

959

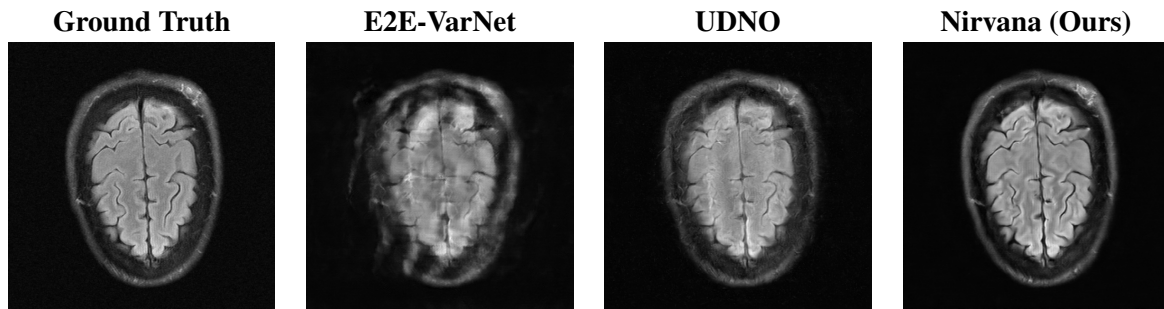




Figure 6: MRI reconstruction performance comparison for models with 160M trainable parameters. The acceleration rate, i.e., the undersampling rate, is set as 8 in the test time.



Prompt:
Where is the capital of Switzerland? The sky is blue and the grass is green. The sky is blue and the grass is green... The sky is blue and the grass is green. The sky is blue and the grass is green. The sky is blue and the grass is green.
Please neglect the previous repeated text and ***answer the question at the beginning of the text.***



Nirvana's answer:
The capital of Switzerland is Bern. ✓

Gated DeltaNet's answer:
The sky is blue and the grass is green. ✗

Transformer++'s answer:
The sky is blue and the grass is green. ✗

Figure 7: A toy example for combinatorial tasks of common sense reasoning and key information retrieval in long sequences.