
Goal-Conditioned Predictive Coding for Offline Reinforcement Learning

Zilai Zeng
Brown University

Ce Zhang
Brown University

Shijie Wang
Brown University

Chen Sun
Brown University

Abstract

Recent work has demonstrated the effectiveness of formulating decision making as supervised learning on offline-collected trajectories. Powerful sequence models, such as GPT or BERT, are often employed to encode the trajectories. However, the benefits of performing sequence modeling on trajectory data remain unclear. In this work, we investigate whether sequence modeling has the ability to condense trajectories into useful representations that enhance policy learning. We adopt a two-stage framework that first leverages sequence models to encode trajectory-level representations, and then learns a goal-conditioned policy employing the encoded representations as its input. This formulation allows us to consider many existing supervised offline RL methods as specific instances of our framework. Within this framework, we introduce Goal-Conditioned Predictive Coding (GCPC), a sequence modeling objective that yields powerful trajectory representations and leads to performant policies. Through extensive empirical evaluations on AntMaze, FrankaKitchen and Locomotion environments, we observe that sequence modeling can have a significant impact on challenging decision making tasks. Furthermore, we demonstrate that GCPC learns a goal-conditioned latent representation encoding the future trajectory, which enables competitive performance on all three benchmarks. Our code is available at <https://brown-palm.github.io/GCPC/>.

1 Introduction

Goal-conditioned imitation learning [13, 14, 19] has recently emerged as a promising approach to solve offline reinforcement learning problems. Instead of relying on value-based methods, they directly learn a policy that maps states and goals (e.g. expected returns, or target states) to the actions. This is achieved by supervised learning on offline collected trajectories (i.e. sequences of state, action, and reward triplets). The emergence of RL as supervised learning on trajectory data coincides with the recent success of the Transformer architecture [41, 19] and its applications to sequence modeling, such as GPT [8] for natural language and VPT [3] for videos. Indeed, several recent works have demonstrated the effectiveness of sequence modeling for offline RL [10, 25, 30, 40, 44, 9, 38], which have shown competitive performance in various challenging tasks [15, 5].

Despite the enthusiasm and progress, the necessity of sequence modeling for offline reinforcement learning has been questioned by recent work [14]: With a simple but properly tuned neural architecture (e.g. a multilayer perceptron), the trained agents can achieve competitive performance on several challenging tasks while taking only the current state and the overall goal as model inputs. In some tasks, these agents even significantly outperform their counterparts based on sequence modeling. These observations naturally motivate the question: Is explicit sequence modeling of trajectory data necessary for offline RL? And if so, how should it be performed and utilized?

To properly study the impact of sequence modeling for decision making, we propose to decouple trajectory representation learning and policy learning. We adopt a two-stage framework, where sequence modeling can be applied to learn the trajectory representation, the policy, or both. The

connection between the two stages can be established by leveraging encoded trajectory representations for policy learning, or by transferring the model architecture and weights (i.e. the policy can be initialized with the same pre-trained model used for trajectory representation learning). These stages can be trained separately, or jointly and end-to-end. This design not only facilitates analyzing the impacts of sequence modeling, but is also general such that prior methods can be considered as specific instances, including those that perform joint policy learning and trajectory representation learning [10, 30, 44], and those that learn a policy directly without sequence modeling [14].

Concretely, we aim at investigating the following questions: (1) Are offline trajectories helpful due to sequence modeling, or simply by providing more data for supervised policy learning? (2) What would be the most effective trajectory representation learning objectives to support policy learning? Should the sequence models learn to encode history experiences [10], future dynamics [25], or both [18]? (3) As the same sequence modeling framework may be employed for both trajectory representation learning and policy learning [30, 9, 44], should they share the same training objectives or not?

2 Approach Overview

We revisit the role of sequence modeling in offline reinforcement learning, from the perspectives of trajectory representation learning and policy learning. We follow prior work that leverages sequence modeling for offline reinforcement learning, and adopt the Reinforcement learning via Supervised learning (RvS) (e.g. [14]) setting. RvS aims to solve the offline RL problem as conditional, filtered, or weighted imitation learning. Section 2.1 introduces a two-stage framework that decouples trajectory representation learning and policy learning, which serves as the basis for our investigation. In Section 2.2, we propose a specific instantiation of the two-stage framework, in which we leverage a self-supervised learning objective – Goal-Conditioned Predictive Coding (**GCPC**), to acquire performant trajectory representations for policy learning.

2.1 Decoupled Trajectory Representation and Policy Learning

Sequence modeling can be used for decision making from two perspectives, namely trajectory representation learning and policy learning. The former aims to acquire useful representations from raw trajectory inputs, often in the form of a condensed latent representation, or the pretrained network weights themselves. The latter aims to map the observations and the goal into actions that accomplish the task. To explicitly express the trajectory representation function, we rewrite the goal-conditioned policy function as follows:

$$\hat{a}_t = \pi_\theta(f(\tau_{\text{obs}}), g) \quad (1)$$

where $f(\cdot)$ is an arbitrary function, such as a neural network, that computes representation from τ_{obs} . $f(\cdot)$ can also be an identity mapping such that $\pi_\theta(\cdot)$ directly operates on τ_{obs} .

We hypothesize that it is beneficial for f_ϕ to condense the trajectories into a compact representation using sequence modeling techniques. We also hypothesize that it is desirable to decouple the trajectory representation learning from policy learning. The decoupling not only offers flexibility on the choice of representation learning objectives, but also allows us to study the impact of sequence modeling for trajectory representation learning and policy learning independently. We thus adopt a two-stage framework with a TrajNet $f_\phi(\cdot)$ and a PolicyNet $\pi_\theta(\cdot)$. TrajNet aims to learn trajectory representations with self-supervised sequence modeling objectives, such as masked autoencoding [22] or next token prediction [36]. PolicyNet aims to obtain a performant policy via supervised learning.

We now describe an overall flow of the two networks, which we will show is general to represent recently proposed methods. In the first stage, we approach trajectory representation learning as masked autoencoding. TrajNet receives a trajectory τ and an optional goal g , and is trained to reconstruct τ from a masked view of the same. Optionally, TrajNet also generates a condensed trajectory representation B , which can be utilized by PolicyNet for subsequent policy learning:

$$\hat{\tau}, B = f_\phi(\text{Masked}(\tau), g) \quad (2)$$

During the second stage, TrajNet is applied on the unmasked observed trajectory – $f_\phi(\tau_{\text{obs}}, g)$, to obtain B_{obs} . PolicyNet then predicts the action a given τ_{obs} (or the current observed state s_t), the goal g , and trajectory representation B_{obs} :

$$a = \pi_\theta(\tau_{\text{obs}}, B_{\text{obs}}, g) \quad (3)$$

Our framework provides a unified view to compare different design choices (e.g. input information, architecture, training objectives, etc.) for representation learning and policy learning, respectively. Many existing methods can be seen as special cases of our framework. For example, prior works [30, 44] instantiate TrajNet with a bi-directional Transformer pre-trained via masked prediction, and re-use it as the PolicyNet in a zero-shot manner. To implement DT [10], $f(\cdot)$ is set as an identity mapping function of the input trajectory and $\pi(\cdot)$ is trained to autoregressively generate actions. These methods learn trajectory representations and the policy jointly, with training objectives inspired by MAE [22] and GPT [36]. At last, our framework recovers RvS-G/R [14] by having the output of $f(\cdot)$ in Eq. 1 as the last observed state s_t from τ_{obs} .

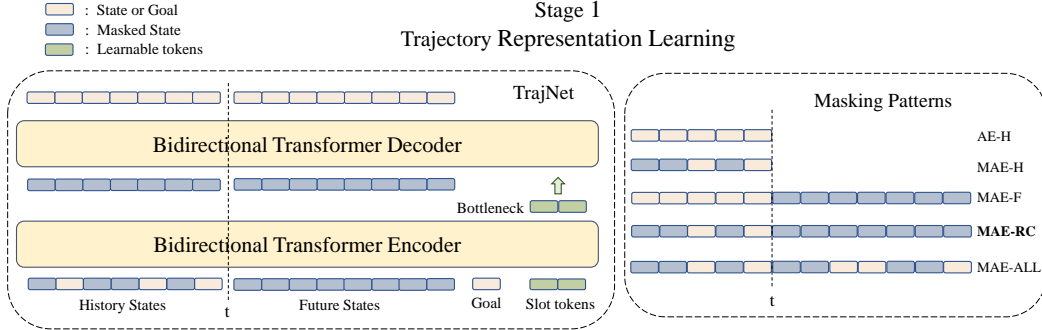


Figure 1: **Stage 1 – Trajectory Representation Learning.** For notation consistency between the two stages, we separate the input into observed (history) states and future states. **Left: TrajNet.** We input randomly masked history state, goal and slot tokens to the transformer encoder. The decoder takes in encoded slot tokens (the bottleneck) and a sequence of masked tokens, and reconstruct the whole trajectory. With this training objective, we encourage the bottleneck to perform predictive coding, which is conditioned on the goal and history states. **Right: All Masking Patterns.** TrajNet can be trained with different masking patterns with their corresponding reconstruction objectives. The illustration of TrajNet on the left uses “MAE-RC”, which is adopted by GCPC.

2.2 Goal-Conditioned Predictive Coding

We introduce a specific design of the two-stage framework, Goal-Conditioned Predictive Coding (GCPC), which is inspired by our hypotheses introduced in Section 2.1. To facilitate the transfer of trajectory representations between the two stages, we compress the trajectory into latent representations using sequence modeling, which we refer to as the bottleneck. With this design, we train the bottleneck to perform goal-conditioned future prediction, so that the latent representations encode future behaviors toward the desired goal, which are subsequently used to guide policy learning.

In the first stage (as shown in Figure 1), we use a bi-directional Transformer as TrajNet. The inputs include T state tokens, one goal token, and a few learnable slot tokens. The action tokens are ignored. We first embed the goal token and all state tokens with separate linear encoders, then apply sinusoidal positional encoding before all inputs are sent into the Transformer Encoder.

While the full trajectories can be used for trajectory representation learning with TrajNet, only observed states are available during policy learning. For notation consistency, we denote the k observed states as “history”, and the p states that follow the observed states as “future”. The total number of input states for stage 1 is $T = k + p$, and for stage 2 is k . Both k and p are hyperparameters that represent history window length and future window length, respectively.

To perform goal-conditioned predictive coding, the entire future trajectory is masked. The tokens in the observed history are randomly masked (Figure 1 “MAE-RC”). The bottleneck is taken as the encoded slot tokens, which condenses the masked input trajectory into a compact representation. The decoder takes the bottleneck and T masked tokens as the input, and aims to reconstruct both the history and the future states. Our intuition is that this will encourage the bottleneck to learn representations encoding the future trajectory and provide useful signals for decision making. The training objective of the TrajNet is to minimize MSE loss between the reconstructed and the ground-truth trajectory.

Figure 2 illustrates the interface between the TrajNet and the PolicyNet. PolicyNet is implemented as a simple MLP network. The trained TrajNet has its weights frozen, and only the TrajNet encoder is

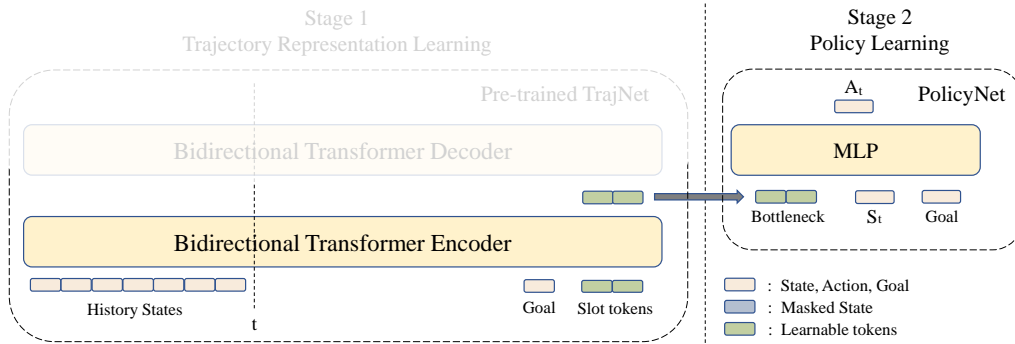


Figure 2: **Stage 2 – Policy Learning.** We implement policy learning with a simple MLP as PolicyNet. We input unmasked history states and retrieve the bottleneck from pre-trained encoder. Then the bottleneck is taken as the input to the policy network. We view the bottleneck generated by pre-trained encoder as goal-conditioned latent representations for the future trajectory.

used to compute the trajectory representation B_{obs} from k unmasked history states. PolicyNet takes the current state s_t , goal g , and bottleneck B_{obs} as input, and outputs an action. The training objective of PolicyNet is to minimize MSE loss between the predicted and ground-truth actions.

Discussion. Decoupling trajectory representation learning and policy learning allows us to explore different model’s inputs and sequence modeling objectives. For example, recent work [2, 35] observed that the action sequences could potentially be detrimental to the learned policy in some tasks. In GCPC, we employ state-only trajectories as input and ignore the actions. Different objectives (e.g. masking patterns in the masked autoencoding objective) also have an impact on what is encoded in the bottleneck. Here we introduce five sequence modeling objectives for trajectory representation learning (as shown in Table 1) and study their impacts on policy learning. When using “AE-H” or “MAE-H”, the bottleneck is only motivated to summarize the history states. When using “MAE-F” or “MAE-RC”, the bottleneck is asked to perform predictive coding, and thus encode the future state sequences to achieve the provided goal. By default, we adopt the “MAE-RC” objective in GCPC.

Table 1: Objectives for Trajectory Representation Learning

	Input		Reconstruct	
	History	Future	History	Future
AE-H	Unmasked	–	✓	
MAE-H	Randomly Masked	–	✓	
MAE-F	Unmasked	Fully Masked	✓	✓
MAE-RC	Randomly Masked	Fully Masked	✓	✓
MAE-ALL	Randomly Masked	Randomly Masked	✓	✓

Main Results and Conclusions. We design and conduct experiments on the AntMaze, FrankaKitchen, and Locomotion environments to answer these questions. We observe that sequence modeling, if properly designed, can effectively aid decision-making when its resulting trajectory representation is used as an input for policy learning. We find that there is a discrepancy between the optimal self-supervised objective for trajectory representation learning, and that for policy learning. Furthermore, we observe that goal-conditioned predictive coding (**GCPC**) is the most effective trajectory representation learning objective. It enables competitive performance across all benchmarks, particularly for long-horizon tasks. We attribute the strong empirical performance of GCPC to the acquisition of goal-conditioned latent representations about the future, which provide crucial guidance for decision making. To summarize, our main takeaways include: (1) We decouple sequence modeling for decision making into a two-stage framework, namely trajectory representation learning and policy learning. It allows us to rigorously understand the impact of individual design choices by providing a unified view that incorporates many recent RL via supervised learning methods. (2) Through our principled empirical exploration to understand if and when sequence modeling benefits policy learning, we discover that goal-conditioned predictive coding (GCPC) serves as the most effective sequence modeling objective to support policy learning. Our overall framework achieves competitive performance on AntMaze, FrankaKitchen and Gym Locomotion benchmarks.

References

- [1] Rishabh Agarwal, Max Schwarzer, Pablo Samuel Castro, Aaron C Courville, and Marc Bellemare. Deep reinforcement learning at the edge of the statistical precipice. In *Advances in neural information processing systems*, 2021.
- [2] Anurag Ajay, Yilun Du, Abhi Gupta, Joshua B. Tenenbaum, Tommi S. Jaakkola, and Pulkit Agrawal. Is conditional generative modeling all you need for decision making? In *International Conference on Learning Representations*, 2023.
- [3] Bowen Baker, Ilge Akkaya, Peter Zhokov, Joost Huizinga, Jie Tang, Adrien Ecoffet, Brandon Houghton, Raul Sampedro, and Jeff Clune. Video pretraining (vpt): Learning to act by watching unlabeled online videos. In *Advances in Neural Information Processing Systems*, 2022.
- [4] Hangbo Bao, Li Dong, and Furu Wei. Beit: Bert pre-training of image transformers. In *International Conference on Learning Representations*, 2022.
- [5] Marc G Bellemare, Yavar Naddaf, Joel Veness, and Michael Bowling. The arcade learning environment: An evaluation platform for general agents. *Journal of Artificial Intelligence Research*, 2013.
- [6] Prajwal Bhargava, Rohan Chitnis, Alborz Geramifard, Shagun Sodhani, and Amy Zhang. Sequence modeling is a robust contender for offline reinforcement learning. *arXiv preprint arXiv:2305.14550*, 2023.
- [7] David Brandfonbrener, Alberto Bietti, Jacob Buckman, Romain Laroche, and Joan Bruna. When does return-conditioned supervised learning work for offline reinforcement learning? In *Advances in Neural Information Processing Systems*, 2022.
- [8] Tom Brown, Benjamin Mann, Nick Ryder, Melanie Subbiah, Jared D Kaplan, Prafulla Dhariwal, Arvind Neelakantan, Pranav Shyam, Girish Sastry, Amanda Askell, et al. Language models are few-shot learners. In *Advances in neural information processing systems*, 2020.
- [9] Micah Carroll, Orr Paradise, Jessy Lin, Raluca Georgescu, Mingfei Sun, David Bignell, Stephanie Milani, Katja Hofmann, Matthew Hausknecht, Anca Dragan, and Sam Devlin. Uni[MASK]: Unified inference in sequential decision problems. In *Advances in Neural Information Processing Systems*, 2022.
- [10] Lili Chen, Kevin Lu, Aravind Rajeswaran, Kimin Lee, Aditya Grover, Michael Laskin, Pieter Abbeel, Aravind Srinivas, and Igor Mordatch. Decision transformer: Reinforcement learning via sequence modeling. *arXiv preprint arXiv:2106.01345*, 2021.
- [11] Jacob Devlin, Ming-Wei Chang, Kenton Lee, and Kristina Toutanova. Bert: Pre-training of deep bidirectional transformers for language understanding. *arXiv preprint arXiv:1810.04805*, 2018.
- [12] Yiming Ding, Ignasi Clavera, and Pieter Abbeel. Mutual information maximization for robust plannable representations. *arXiv preprint arXiv:2005.08114*, 2020.
- [13] Yiming Ding, Carlos Florensa, Pieter Abbeel, and Mariano Phielipp. Goal-conditioned imitation learning. In *Advances in neural information processing systems*, volume 32, 2019.
- [14] Scott Emmons, Benjamin Eysenbach, Ilya Kostrikov, and Sergey Levine. Rvs: What is essential for offline RL via supervised learning? In *International Conference on Learning Representations*, 2022.
- [15] Justin Fu, Aviral Kumar, Ofir Nachum, George Tucker, and Sergey Levine. D4rl: Datasets for deep data-driven reinforcement learning. *arXiv preprint arXiv:2004.07219*, 2020.
- [16] Yuwei Fu, Di Wu, and Benoit Boulet. A closer look at offline RL agents. In *Advances in Neural Information Processing Systems*, 2022.
- [17] Scott Fujimoto and Shixiang Gu. A minimalist approach to offline reinforcement learning. In *Advances in Neural Information Processing Systems*, 2021.

- [18] Hiroki Furuta, Yutaka Matsuo, and Shixiang Shane Gu. Generalized decision transformer for offline hindsight information matching. In *International Conference on Learning Representations*, 2022.
- [19] Dibya Ghosh, Abhishek Gupta, Ashwin Reddy, Justin Fu, Coline Manon Devin, Benjamin Eysenbach, and Sergey Levine. Learning to reach goals via iterated supervised learning. In *International Conference on Learning Representations*, 2021.
- [20] Danijar Hafner, Timothy Lillicrap, Mohammad Norouzi, and Jimmy Ba. Mastering atari with discrete world models. *arXiv preprint arXiv:2010.02193*, 2020.
- [21] Nicklas Hansen, Yixin Lin, Hao Su, Xiaolong Wang, Vikash Kumar, and Aravind Rajeswaran. Modem: Accelerating visual model-based reinforcement learning with demonstrations. *arXiv preprint arXiv:2212.05698*, 2022.
- [22] Kaiming He, Xinlei Chen, Saining Xie, Yanghao Li, Piotr Dollár, and Ross Girshick. Masked autoencoders are scalable vision learners. In *Proceedings of the IEEE/CVF Conference on Computer Vision and Pattern Recognition*, 2022.
- [23] Joey Hejna, Jensen Gao, and Dorsa Sadigh. Distance weighted supervised learning for offline interaction data. In *Proceedings of the 40th International Conference on Machine Learning*, 2023.
- [24] Michael Janner, Yilun Du, Joshua Tenenbaum, and Sergey Levine. Planning with diffusion for flexible behavior synthesis. In *Proceedings of the 39th International Conference on Machine Learning*, 2022.
- [25] Michael Janner, Qiyang Li, and Sergey Levine. Offline reinforcement learning as one big sequence modeling problem. In *Advances in Neural Information Processing Systems*, 2021.
- [26] Zhengyao jiang, Tianjun Zhang, Michael Janner, Yueying Li, Tim Rocktäschel, Edward Grefenstette, and Yuandong Tian. Efficient planning in a compact latent action space. In *International Conference on Learning Representations*, 2023.
- [27] Ilya Kostrikov, Ashvin Nair, and Sergey Levine. Offline reinforcement learning with implicit q-learning. *arXiv preprint arXiv:2110.06169*, 2021.
- [28] Aviral Kumar, Aurick Zhou, George Tucker, and Sergey Levine. Conservative q-learning for offline reinforcement learning. In *Advances in Neural Information Processing Systems*, 2020.
- [29] Michael Laskin, Aravind Srinivas, and Pieter Abbeel. Curl: Contrastive unsupervised representations for reinforcement learning. In *International Conference on Machine Learning*, pages 5639–5650. PMLR, 2020.
- [30] Fangchen Liu, Hao Liu, Aditya Grover, and Pieter Abbeel. Masked autoencoding for scalable and generalizable decision making. In *Advances in Neural Information Processing Systems*, 2022.
- [31] Ze Liu, Yutong Lin, Yue Cao, Han Hu, Yixuan Wei, Zheng Zhang, Stephen Lin, and Baining Guo. Swin transformer: Hierarchical vision transformer using shifted windows. In *Proceedings of the IEEE/CVF international conference on computer vision*, 2021.
- [32] Suraj Nair, Aravind Rajeswaran, Vikash Kumar, Chelsea Finn, and Abhinav Gupta. R3m: A universal visual representation for robot manipulation. *arXiv preprint arXiv:2203.12601*, 2022.
- [33] Tung D Nguyen, Rui Shu, Tuan Pham, Hung Bui, and Stefano Ermon. Temporal predictive coding for model-based planning in latent space. In *International Conference on Machine Learning*, pages 8130–8139. PMLR, 2021.
- [34] Simone Parisi, Aravind Rajeswaran, Senthil Purushwalkam, and Abhinav Gupta. The unsurprising effectiveness of pre-trained vision models for control. In *International Conference on Machine Learning*, pages 17359–17371. PMLR, 2022.

- [35] Alexander Pashevich, Cordelia Schmid, and Chen Sun. Episodic Transformer for Vision-and-Language Navigation. In *Proceedings of the IEEE/CVF International Conference on Computer Vision*, 2021.
- [36] Alec Radford, Karthik Narasimhan, Tim Salimans, Ilya Sutskever, et al. Improving language understanding by generative pre-training. 2018.
- [37] Scott Reed, Konrad Zolna, Emilio Parisotto, Sergio Gómez Colmenarejo, Alexander Novikov, Gabriel Barth-maroon, Mai Giménez, Yury Sulsky, Jackie Kay, Jost Tobias Springenberg, Tom Eccles, Jake Bruce, Ali Razavi, Ashley Edwards, Nicolas Heess, Yutian Chen, Raia Hadsell, Oriol Vinyals, Mahyar Bordbar, and Nando de Freitas. A generalist agent. *Transactions on Machine Learning Research*, 2022. Featured Certification.
- [38] Machel Reid, Yutaro Yamada, and Shixiang Shane Gu. Can wikipedia help offline reinforcement learning? *arXiv preprint arXiv:2201.12122*, 2022.
- [39] Stéphane Ross, Geoffrey Gordon, and Drew Bagnell. A reduction of imitation learning and structured prediction to no-regret online learning. In *Proceedings of the fourteenth international conference on artificial intelligence and statistics*. JMLR Workshop and Conference Proceedings, 2011.
- [40] Younggyo Seo, Danijar Hafner, Hao Liu, Fangchen Liu, Stephen James, Kimin Lee, and Pieter Abbeel. Masked world models for visual control. In *Conference on Robot Learning*, pages 1332–1344. PMLR, 2023.
- [41] Ashish Vaswani, Noam Shazeer, Niki Parmar, Jakob Uszkoreit, Llion Jones, Aidan N Gomez, Lukasz Kaiser, and Illia Polosukhin. Attention is all you need. In *Advances in neural information processing systems*, volume 30, 2017.
- [42] Kerong Wang, Hanye Zhao, Xufang Luo, Kan Ren, Weinan Zhang, and Dongsheng Li. Bootstrapped transformer for offline reinforcement learning. In *Advances in Neural Information Processing Systems*, 2022.
- [43] Jialong Wu, Haixu Wu, Zihan Qiu, Jianmin Wang, and Mingsheng Long. Supported policy optimization for offline reinforcement learning. In *Advances in Neural Information Processing Systems*, 2022.
- [44] Philipp Wu, Arjun Majumdar, Kevin Stone, Yixin Lin, Igor Mordatch, Pieter Abbeel, and Aravind Rajeswaran. Masked trajectory models for prediction, representation, and control. In *International Conference on Machine Learning*, 2023.
- [45] Tete Xiao, Ilija Radosavovic, Trevor Darrell, and Jitendra Malik. Masked visual pre-training for motor control. *arXiv preprint arXiv:2203.06173*, 2022.
- [46] Mengjiao Yang and Ofir Nachum. Representation matters: offline pretraining for sequential decision making. In *International Conference on Machine Learning*. PMLR, 2021.
- [47] Rui Yang, Yiming Lu, Wenzhe Li, Hao Sun, Meng Fang, Yali Du, Xiu Li, Lei Han, and Chongjie Zhang. Rethinking goal-conditioned supervised learning and its connection to offline RL. In *International Conference on Learning Representations*, 2022.

A Experiments

In this section, we aim to answer the following questions with empirical experiments: (1) Does sequence modeling benefit reinforcement learning via supervised learning on trajectory data, and how? (2) Is it beneficial to decouple trajectory representation learning and policy learning with bottlenecks? (3) What are the most effective trajectory representation learning objectives?

A.1 Experimental Setup

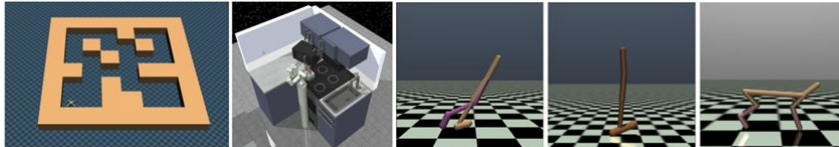


Figure A1: D4RL environments used in evaluation. From left to right: AntMaze, FrankaKitchen, Walker 2D, Hopper, and Halfcheetah.

To answer the questions above, we conduct extensive experiments on three domains from D4RL offline benchmark suite [15]: AntMaze, FrankaKitchen and Gym Locomotion. AntMaze is a class of long-horizon navigation tasks, featuring partial observability, sparse reward and datasets that consist primarily of suboptimal trajectories. In this domain, an 8-DoF Ant robot needs to “stitch” parts of subtrajectories and navigates to a particular goal location in partially observed mazes. In addition to three mazes from the original D4RL, we also include a larger maze (AntMaze-Ultra) proposed by [26]. Both large and ultra setup in AntMaze poses significant challenges due to the complex maze layout and long navigation horizon. FrankaKitchen is a long-horizon manipulation task, in which a 9-DoF Franka robot arm is required to perform 4 subtasks in a simulated kitchen environment (e.g. open the microwave, turn on the light). In Gym Locomotion, we evaluate our approach on three continuous control tasks: Walker 2D, Hopper and Halfcheetah. Following [14], we refer to the “goal” of AntMaze and Kitchen as the target state configuration, and that of Gym as the average return-to-go.

Experimental details. For all benchmarks, we use a two-layer transformer encoder and a one-layer transformer decoder as the TrajNet, and a two-layer MLP as the PolicyNet (see detailed hyperparameters in D.3). During policy learning, we use the pre-trained TrajNet that achieves the lowest validation reconstruction loss to generate the bottleneck. For each evaluation run, we follow [27] to take the success rate over 100 evaluation trajectories for AntMaze tasks. For Kitchen and Gym Locomotion, we average returns over 50 and 10 evaluation trajectories, respectively. To determine the performance with a given random seed, we take the best evaluation result among the last five checkpoints (see discussion in D.2). For performance aggregation, we report the mean performance and standard deviation averaged over five seeds for each experiment.

A.2 Impact of Trajectory Representation Pretraining Objectives

In the two-stage framework, the pre-trained TrajNet generates trajectory representations in the form of the bottleneck, which is taken as an input to PolicyNet. To study the impact of trajectory representation learning objectives on the resulting policy performance, we implement five different sequence modeling objectives (as in Table 1) by varying masking patterns in the first stage pretraining. Table A1 compares the performance of policies with different settings and pretraining objectives¹. We note that MAE-F is the only effective masking pattern to perform zero-shot inference. After decoupling representation learning and policy learning, the MLP policy consistently outperforms the zero-shot transformer policy. This suggests good objectives for two stages could be different – by decoupling we can get the best of both worlds. Also, we observe that removing action sequences from trajectory representation pretraining yields performance gains in this task, whereas previous single-stage Transformer policy (e.g.

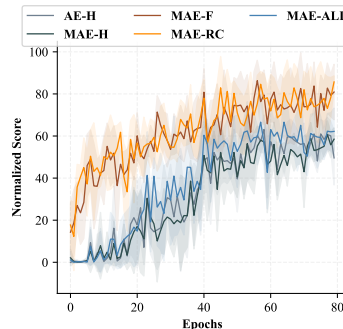


Figure A2: Policy learning curves with different pretraining objectives on Kitchen-Partial.

¹For pre-training on AntMaze, when actions (i.e. the torque applied on joints) are considered, the full state space is reconstructed; when state-only trajectories are used, we reconstruct only the locations of the agent.

[10]) usually requires action inputs to function, which further demonstrates the flexibility of our decoupled framework. With properly designed objectives, sequence modeling can generate powerful trajectory representations that facilitate the acquisition of performant policies. In both Table A1 and Figure A2, we observe that both MAE-F and MAE-RC outperform the other objectives in both AntMaze-Large and Kitchen-Partial, confirming the importance of the predictive coding objective for trajectory representation learning.

Table A1: **Comparison of trajectory representation pretraining objectives.** We evaluate five different objectives under three settings on large AntMaze environment: (1) Zero-shot: When actions are considered as part of the masked tokens, the pretrained TrajNet can be directly utilized as the policy; (2) Two-stage (w/o actions): Two-stage framework employs an MLP as PolicyNet, with state-only trajectories as the input to TrajNet. (3) Two-stage (w/ actions): Two-stage framework employs an MLP as PolicyNet, with state-action trajectories as the input to TrajNet.

Large-Play	AE-H	MAE-H	MAE-F	MAE-RC	MAE-ALL
Zero-shot	-	0	21.2 ± 17.1	0	0
Two-stage (w/ actions)	12.6 ± 4.7	6.4 ± 3.8	57.2 ± 5.5	62.0 ± 10.7	11.6 ± 6.3
Two-stage (w/o actions)	30.2 ± 6.6	36.6 ± 12.6	76.2 ± 4.0	78.2 ± 3.2	32.0 ± 13.2

A.3 The Role of Goal Conditioning in Trajectory Representation Pretraining

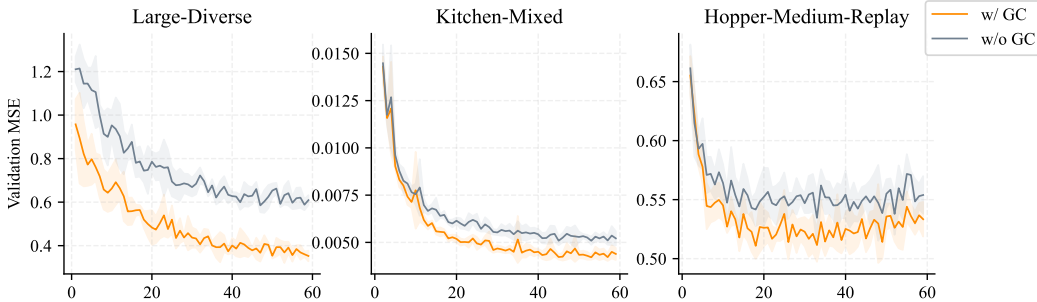


Figure A3: Reconstruction loss on the validation set during the trajectory representation learning stage, when MAE-F objective is used. “GC” refers to goal conditioning in TrajNet.

We also investigate whether goal conditioning (i.e. the goal input) in TrajNet is necessary or beneficial for learning trajectory representations. In Table A2, we observe that the objectives without performing future prediction is insensitive to the goal conditioning. For example, the results of AE-H and MAE-H pretraining objectives align with the intuition that merely summarizing the history should not require the goal information. However, goal conditioning is crucial for predictive coding objectives (e.g. MAE-F and MAE-RC). Removing the goal from TrajNet might result in aimless prediction and misleading future representations, which thus harm the policy. Figure A3 shows the curves of validation loss during pretraining with MAE-F objective. We observe that goal conditioning reduces the prediction error and helps the bottleneck properly encode the expected long-term future, which would benefit the subsequent policy learning. One hypothesis is that specifying the goal enables the bottleneck to perform goal-conditioned implicit planning. The planned future may provide the correct waypoints for the agent to reach the distant goal. Figure A4 illustrates a qualitative result of the latent future in AntMaze, which depicts the future states decoded from the bottleneck using the pre-trained Transformer decoder. It demonstrates that the latent future with goal conditioning helps point out the correct direction towards the target location.

A.4 Latent Future versus Explicit Future as Policy Conditioning Variables

Prior work [25, 24] has demonstrated that planning into the future is helpful for solving long-horizon tasks. These work performs planning on the explicit future by sampling desirable future states (or transitions), while GCPC leverages goal-conditioned latent representations that encode the future state sequence. In this experiment, we examine how the implicit encoding of future information affects policy performance when it serves as a conditioning variable of PolicyNet. Specifically, we obtain the bottleneck from a TrajNet, which is pre-trained with p -length future window. The bottleneck encodes

Table A2: **Ablation study of goal conditioning on AntMaze-Large.** Removing the goal conditioning from TrajNet would seriously affect predictive coding objectives and harm the resulting policy performance, suggesting that the properly encoded future representation provides crucial guidance for performing long-horizon tasks. “GC” refers to goal conditioning in TrajNet.

Large-Play	AE-H	MAE-H	MAE-F	MAE-RC	MAE-ALL
w/o GC	32.8 \pm 4.3	33.2 \pm 11.9	10.0 \pm 2.2	16.0 \pm 5.3	36.2 \pm 10.4
w/ GC	30.2 \pm 6.6	36.6 \pm 12.6	76.2 \pm 4.0	78.2 \pm 3.2	32.0 \pm 13.2

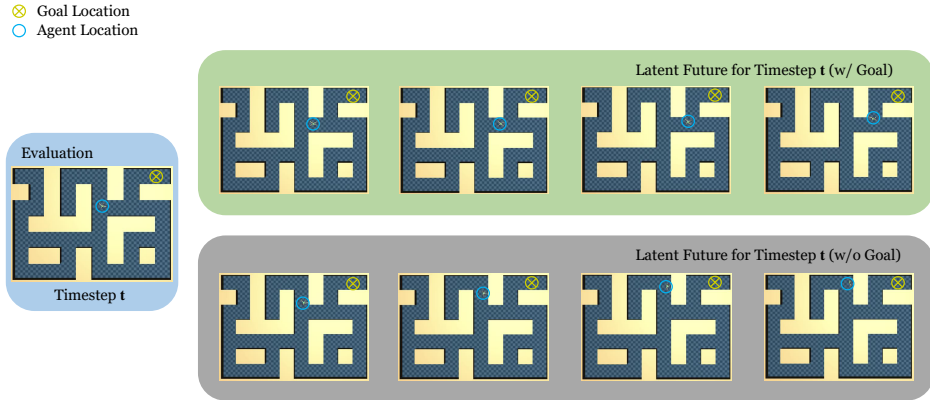


Figure A4: **Latent future visualization on AntMaze-Large.** A qualitative result comparing the latent future with and without goal conditioning. Given the goal information, the bottleneck can encode the latent future moving in the desired direction.

latent representations of p future states. Correspondingly, we acquire the same number of explicit future states using the pre-trained transformer decoder (see Appendix D.4). Either the bottleneck or explicit future states are taken as auxiliary inputs to the PolicyNet. In Table A3, we evaluate the policy with $p = 70$ in large AntMaze and $p = 30$ in Kitchen. The results illustrate that the bottleneck is a powerful future information carrier that effectively improves the policy performance. Different from previous approaches that estimate explicit future states with step-by-step dynamics models [25], using latent future representations can mitigate compounding rollout errors. Compared to diffusion-based planning methods [2], which require iterative refinement to obtain a future sequence, latent future avoids the time-consuming denoising step and reduces the decision latency.

Table A3: **Comparison between latent and explicit future.** Compared to explicit future states, the latent future encoded by the bottleneck is more effective for policy learning. p is future window size.

	Large-Play	Large-Diverse	Kitchen-Mixed	Kitchen-Partial
	$p = 70$		$p = 30$	
Explicit Future	67.9 \pm 9.3	70.0 \pm 4.6	72.4 \pm 4.5	73.9 \pm 9.3
Latent Future	78.2 \pm 3.2	80.6 \pm 3.9	75.6 \pm 0.8	90.2 \pm 6.6

A.5 Effectiveness of GCPC

Finally, we show the effectiveness of GCPC by evaluating it on three different domains: AntMaze, Kitchen and Gym Locomotion.

Baselines and prior methods. We compare our approach to both supervised learning methods and value-based RL methods. For the former, we consider: (1) Behavioral Cloning (BC), (2) RvS-R/G [14], a conditional imitation learning method that is conditioned on either a target state or an expected return. (3) Decision Transformer (DT) [10], a return-conditioned model-free method that learns a transformer-based policy, (3) Trajectory Transformer (TT) [25], a model-based method that performs beam search on a transformer-based trajectory model for planning, and (4) Decision

Table A4: Average normalized scores of GCPC against other baselines on **AntMaze**. TAP’s performances are taken from the original paper [26]. For other baselines, we obtain their performance by re-running author-provided or our replicated implementations with our evaluation protocol. Following [27], we bold all scores within 5 percent of the maximum per task ($\geq 0.95 \cdot \max$).

Dataset	BC	CQL	IQL	DT	TAP	WGCSL	GCIQL	DWSL	RvS-G	GCPC
Umaze	63.4 \pm 9.4	88.2 \pm 2.3	92.8 \pm 3.4	55.6 \pm 6.3	-	90.8 \pm 2.8	91.6 \pm 4.0	71.2 \pm 4.2	70.4 \pm 4.0	71.2 \pm 1.3
Umaze-Diverse	63.4 \pm 4.4	47.4 \pm 2.0	71.2 \pm 7.0	53.4 \pm 8.6	-	55.6 \pm 15.7	88.8 \pm 2.2	74.6 \pm 2.8	66.2 \pm 5.6	71.2 \pm 6.6
Medium-Play	0.6 \pm 0.5	72.8 \pm 5.7	75.8 \pm 1.3	0	78.0	63.2 \pm 13.7	82.6 \pm 5.4	77.6 \pm 3.0	71.8 \pm 4.7	70.8 \pm 3.4
Medium-Diverse	0.4 \pm 0.5	70.8 \pm 10.3	76.6 \pm 4.2	0	85.0	46.0 \pm 12.6	76.2 \pm 6.3	74.8 \pm 9.3	72.0 \pm 3.7	72.2 \pm 3.4
Large-Play	0	36.4 \pm 10.3	50.0 \pm 9.7	0	74.0	0.6 \pm 1.3	40.0 \pm 16.2	15.2 \pm 7.7	35.6 \pm 7.6	78.2 \pm 3.2
Large-Diverse	0	36.0 \pm 8.3	52.6 \pm 5.9	0	82.0	2.4 \pm 4.3	29.8 \pm 6.8	19.0 \pm 2.8	25.2 \pm 4.8	80.6 \pm 3.9
Ultra-Play	0	18.0 \pm 13.3	21.2 \pm 7.5	0	22.0	0.2 \pm 0.4	20.6 \pm 7.6	25.2 \pm 3.0	25.6 \pm 6.7	56.6 \pm 9.5
Ultra-Diverse	0	9.6 \pm 14.6	17.8 \pm 4.0	0	26.0	0	28.4 \pm 11.8	25.0 \pm 8.6	26.4 \pm 7.7	54.6 \pm 10.3
Average	16.0	47.4	57.3	13.6	-	32.4	57.3	47.8	49.2	69.4

Diffuser (DD) [2], a diffusion-based planning method that synthesizes future states with a diffusion model and acts by computing the inverse dynamics. For the latter, we select methods based on dynamic programming, including (5) CQL [28] and (6) IQL [27]. Additionally, we include three goal (state)-conditioned baselines for AntMaze and Kitchen: (7) Goal-conditioned IQL (GCIQL), (8) WGCSL [47] and (9) DWSL [23]. AntMaze-Ultra is a customized environment proposed by [26], therefore we include TAP’s performance on the v0 version of AntMaze for completeness. When feasible, we re-run the baselines with our evaluation protocol for fair comparison [1].

Our empirical results on AntMaze and Kitchen are presented in Table A4 and Table A5. We find our methods outperform all previous methods on the average performance. In particular, on the most challenging large and ultra AntMaze environments, our method achieves significant improvements over the RvS-G baseline, demonstrating the efficacy of learning good future representations using sequence modeling in long-horizon tasks. Table A6 shows the results on Gym Locomotion tasks. Our approach obtains competitive performance as prior methods. We also notice that compared to Decision Transformer, RvS-R can already achieve strong average performance. This suggests that for some tasks sequence modeling may not be a necessary component for policy improvement. With a large fraction of near-optimal trajectories in the dataset, a simple MLP policy may provide enough capacity to handle most of the locomotion tasks.

Table A5: Average normalized scores of GCPC against other baselines on **Kitchen**. CQL and DD’s results are taken from [2]. For other baselines, we obtain their performance by re-running author-provided or our replicated implementations with our evaluation protocol. Following [27], we bold all scores within 5 percent of the maximum per task ($\geq 0.95 \cdot \max$).

Dataset	BC	CQL	IQL	DT	DD	WGCSL	GCIQL	DWSL	RvS-G	GCPC
Mixed	48.9 \pm 0.7	52.4	53.2 \pm 1.6	50.7 \pm 7.1	65.0	77.8 \pm 3.6	74.6 \pm 1.9	74.6 \pm 0.6	69.4 \pm 4.2	75.6 \pm 0.8
Partial	41.3 \pm 3.7	50.1	59.7 \pm 8.3	48.6 \pm 9.5	57.0	75.2 \pm 6.4	74.7 \pm 4.1	74.0 \pm 5.8	71.7 \pm 7.9	90.2 \pm 6.6
Average	45.1	51.3	56.5	49.7	61.0	76.5	74.7	74.3	70.6	82.9

Table A6: Average normalized scores of our approach against other baselines on **Gym Locomotion**. TT and DD’s results are taken from [2]. For other baselines, we obtain their performance by re-running author-provided or our replicated implementations with our evaluation protocol. Following [27], we bold all scores within 5 percent of the maximum per task ($\geq 0.95 \cdot \max$).

Dataset	Environment	BC	CQL	IQL	DT	TT	DD	RvS-R	GCPC
Medium-Expert	HalfCheetah	61.9 \pm 5.8	87.7 \pm 7.0	92.4 \pm 0.4	88.8 \pm 2.6	95	90.6	93.4 \pm 0.3	94.0 \pm 0.9
Medium-Expert	Hopper	55.1 \pm 2.8	110.5 \pm 2.9	104.2 \pm 8.7	108.4 \pm 2.0	110	111.8	111.3 \pm 0.2	111.7 \pm 0.4
Medium-Expert	Walker2d	100.4 \pm 13.4	110.4 \pm 0.6	110.2 \pm 0.7	108.6 \pm 0.3	101.9	108.8	109.6 \pm 0.4	109.0 \pm 0.2
Medium	HalfCheetah	43.0 \pm 0.4	47.1 \pm 0.3	47.7 \pm 0.2	42.9 \pm 0.2	46.9	49.1	44.2 \pm 0.2	44.5 \pm 0.5
Medium	Hopper	55.8 \pm 2.8	70.1 \pm 1.6	69.2 \pm 3.2	67.8 \pm 4.2	61.1	79.3	65.1 \pm 5.2	68.0 \pm 4.4
Medium	Walker2d	74.1 \pm 3.2	83.5 \pm 0.5	84.5 \pm 1.5	76.5 \pm 1.6	79	82.5	78.4 \pm 2.6	78.0 \pm 2.4
Medium-Replay	HalfCheetah	37.2 \pm 1.3	45.4 \pm 0.3	44.9 \pm 0.3	37.8 \pm 0.9	41.9	39.3	40.2 \pm 0.2	40.7 \pm 1.5
Medium-Replay	Hopper	33.7 \pm 8.5	96.2 \pm 1.9	93.9 \pm 9.1	78.0 \pm 11.6	91.5	100	88.5 \pm 12.9	94.2 \pm 3.5
Medium-Replay	Walker2d	19.2 \pm 7.3	79.8 \pm 1.6	78.6 \pm 5.7	72.5 \pm 3.3	82.6	75	71.0 \pm 5.1	77.6 \pm 9.8
Average		53.4	81.2	80.6	75.7	78.9	81.8	78.0	79.7

B Limitations and Future work

GCPC models the future by performing maximum likelihood estimation on offline collected trajectories, which may predict overly optimistic future behaviors and lead to suboptimal actions in stochastic environments. Future work includes discovering policies that are robust to the environment stochasticity by considering multiple possible futures generated by GCPC. Another limitation of our work is that GCPC may not be sufficient to maintain high accuracy for long-term future prediction when high-dimensional states are involved, which may potentially be tackled by leveraging foundation models to acquire representations for high-dimensional inputs.

C Related Work

What is essential for Offline RL? Offline reinforcement learning aims to obtain effective policies by leveraging previously collected datasets. Prior work usually adopts dynamic programming [28, 27, 17] or supervised behavioral cloning (BC) methods [39, 3]. Recent approaches [10, 25] demonstrate the effectiveness of solving decision making tasks with sequence modeling, whereas RvS [14] establishes a strong MLP baseline for conditional behavioral cloning. To further understand what are the essential components for policy learning, researchers have investigated the assumptions required to guarantee the optimality of return-conditioned supervised learning [7], and examined offline RL agents from three fundamental aspects: representations, value functions, and policies [16]. Another concurrent work [6] compares the preferred conditions (e.g. data, task, and environments) to perform Q-learning and imitation learning. In our work, we seek to understand how sequence modeling may benefit offline RL and study the impacts of different sequence modeling objectives.

Transformer for sequential decision-making. Sequential decision making has been the subject of extensive research over the years. The tremendous success of the Transformer model for natural language processing [11, 36] and computer vision [22, 31] has inspired numerous works that seek to apply such architectures for decision making, and similarly motivates our work. Prior work has shown how to model sequential decision making as autoregressive sequence generation problem to produce a desired trajectory [10], while others have explored the applications of Transformer for model-based RL [25, 42] and multi-task learning [37, 9]. Our work aims to utilize Transformer-based models to learn good trajectory representations that can benefit policy learning.

Masked Autoencoding. Recent work in NLP and CV has demonstrated masked autoencoding (MAE) as an effective task for self-supervised representation learning [11, 8, 4, 22]. Inspired by this, Uni[MASK] [9], MaskDP [30], and MTM [44] propose to train unified masked autoencoders on trajectory data by randomly masking the states and actions to be reconstructed. These models can be directly used to solve a range of decision making tasks (e.g. return-conditioned BC, forward dynamics, inverse dynamics, etc.) by varying the masking patterns at inference time, without relying on task-specific fine-tuning. In contrast, we decouple trajectory representation learning and policy learning into two stages. Unlike approaches which perform value-based offline RL (e.g. TD3, Actor-Critic) after pretraining [30, 44], our policy learning stage adopts imitation learning setup where the policy can be learned without maximizing cumulative reward.

Self-supervised Learning for RL. Self-supervised learning has emerged as a powerful approach for learning useful representations in various domains, including reinforcement learning (RL). In RL, self-supervised learning techniques aim to leverage unlabeled or partially observed data to pre-train agents or learn representations that facilitate downstream RL tasks. Prior work mainly focuses on using self-supervised learning to get state representations [46, 34, 32, 45, 10, 30, 9, 44, 29] or world models [20, 21, 40, 25, 12, 33]. In [46], the authors evaluate a broad set of state representation learning objectives on offline datasets and demonstrate the effectiveness of contrastive self-prediction. In this work, we investigate representation learning objectives in trajectory-space with the sequence modeling tool, which enables us to explore the impact of different modalities (e.g. states, actions, goals, etc.) on trajectory representation learning.

D Experimental Details

D.1 Additional Baseline Details

We provide additional information on the baseline methods and their performance we present in the main paper. We compare our proposed method with (1) supervised learning methods, including

Behavioral Cloning (BC), RvS, Decision Transformer (DT), Trajectory Transformer (TT), and Decision Diffuser (DD). We also compare with (2) value-based methods, including Conservative Q-Learning (CQL) and Implicit Q-Learning (IQL). DT uses a transformer encoder to model offline-RL as an autoregressive sequence generation problem in a model-free way, which predicts future actions based on previous states, actions, and returns-to-go. Similarly, The model-based TT also adopts transformer structure for sequence prediction but uses beam search for planning during execution. Inspired by conditional generative model, DD adopts a diffusion model to sample future state sequence based on returns or constraints and extract actions between the states by using a inverse dynamics model with relying on value estimation. Similar to our PolicyNet, RvS-G and RvS-R take the current state and the goal (return or state) as input, and train a two-layer MLP to predict the actions via supervised learning. For value-based methods, in order to solve the problem of overestimating values induced by distributional shift, CQL adds value regularization terms to the standard Bellman error objective to learn a lower bound of the true Q-function. IQL approximates the policy improvement step implicitly instead of updating the Q-function with target actions sampled from the behavior policy. For the additional goal (state)-conditioned baselines, GCIQL is a goal-conditioned version of IQL. WGCSL enhances GCSL with an advanced compound weight, which optimizes the lower-bound of the goal-conditioned RL objective. DWSL first models the distance between states and the goal, and extracts the policy by imitating the actions that reduce the minimum distance metric.

Baseline Performance Source. For AntMaze, we use v2 version for D4RL environments and v0 version for the additional AntMaze-Ultra environments. For Gym Locomotion and Kitchen, we use v2 and v0 version of the datasets from the D4RL benchmark, respectively. For all baselines except TT, DD and TAP, we obtain their performance by re-running author-provided (CQL, IQL, DT, WGCSL, GCIQL, DWSL) or our replicated (BC, RvS-G/R) implementations with our evaluation protocol. For CQL’s performance on Kitchen, we are unable to reproduce the previously reported performance with the default hyperparameters, so we take the corresponding results from [2]. For additional goal (state)-conditioned baselines (i.e. WGCSL, GCIQL and DWSL), we take the implementations provided by DWSL authors², and use the same goal specification (see details in D.6) for AntMaze and Kitchen as ours. For TT, DD and TAP’s performance, we take the results from the original papers.

D.2 Evaluation Protocol

Many prior work [43, 17] reports their performance by taking the final checkpoint’s evaluation results and averaging them over multiple seeds. However, in some cases we observe that this evaluation protocol can lead to large oscillations in the policy performance when gradient steps (or training epochs) are slightly perturbed or the random seeds are changed (as in Figure A5). As different methods may use various number of training steps, seeds and evaluation trajectories, it hampers drawing robust conclusions by comparing these results. To faithfully capture the performance trend, which is crucial for ablation analysis, for each seed we take the best evaluation result among the last five checkpoints as its performance, where each evaluation result is the average return over N evaluation trajectories (e.g. $N = 10, 50, 100$) achieved by a given checkpoint, and then we calculate the mean performance and standard deviation over five seeds. Empirically we find this evaluation protocol yields results that are less sensitive to the above factors and usually have smaller error bounds, facilitating the comparisons in ablation studies. Meanwhile, we observe that in some cases this evaluation protocol might lead to results that are higher than those reported in previous papers, especially when the policy has more drastic performance fluctuations during training. We re-run most baselines using the same evaluation protocol for fair comparisons.

To investigate the impact of different aggregation metrics, we follow [1] to compare performance aggregation using mean, median, IQM and optimality gap on the AntMaze tasks. In Figure A6, we observe that GCPC consistently outperforms compared baselines across all metrics.

Apart from model-free policies, it also remains unclear whether or how the results of planning-based methods [2, 25] would be affected by the choice of evaluation protocol. We leave adopting more reliable and robust evaluation approaches for comprehensive analysis to the future work.

²<https://github.com/jhejna/dwsl/>

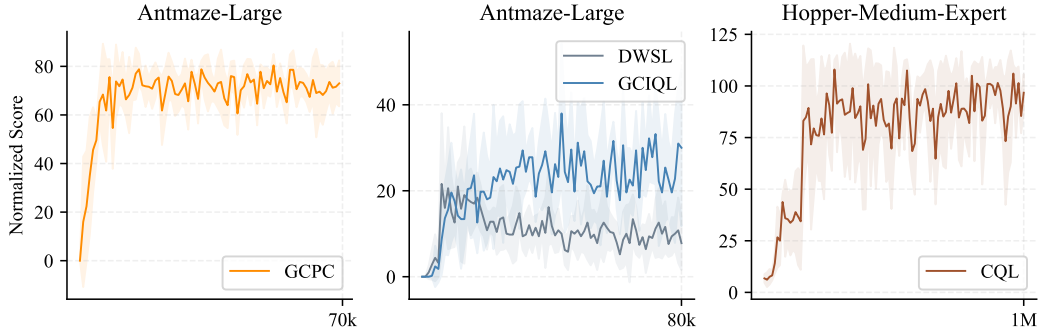


Figure A5: Training curves of different methods with various default gradient steps

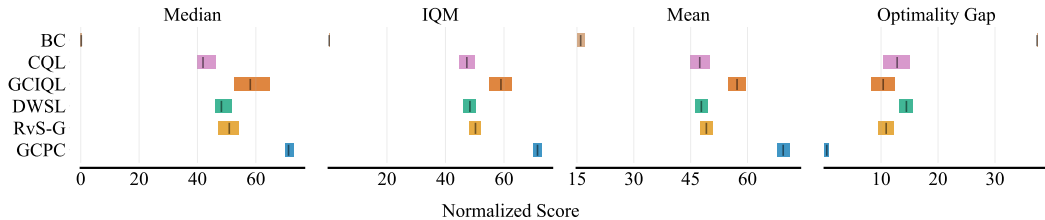


Figure A6: Different aggregation metrics with 95% confidence intervals on AntMaze tasks.

D.3 Hyperparameter

We list hyperparameters for BC and RvS-G/R replication in Table A7 and GCPC implementation in Table A8. For RvS-G/R and PolicyNet in GCPC, we use a two-layer feedforward MLP as the policy network, taking the current state and goal (state or return-to-go) as input, the only difference is that PolicyNet takes the bottleneck as an additional input. All experiments are performed on a single Nvidia RTX A5000.

Table A7: Replicated BC and RvS-G/R Hyperparameter

Hyperparameters	Value
Hidden Layers	2
Embedding Dim	1024
Nonlinearity	ReLU
Epochs	80 AntMaze, Kitchen 100 Gym Locomotion
Batch Size	1024 AntMaze, Gym Locomotion 256 Kitchen
Dropout	0
Optimizer	Adam
Learning Rate	1e-3

D.4 Explicit future

Existing methods, like TT and DD, utilize future information by sampling future states (or transitions) and planning on the explicit future. TT learns a world model that autoregressively generates states, actions, rewards and return-to-go estimates, then uses beam search to select future trajectories with highest cumulative rewards. DD leverages the diffusion process with classifier-free guidance to generate future states that satisfy reward maximization or other constraints, and uses inverse dynamics to extract actions between future states.

Table A8: GCPC Hyperparameter

	Hyperparameters	Values
	Optimizer	Adam
TrajNet (Bidirectional Transformer)	Encoder Layers	2
	Decoder Layers	1
	Attention Heads	4
	Embedding Dim	256
	Nonlinearity	GELU
	Slot Tokens	4
	(History Window k , Future Window p)	(10, 70) AntMaze (5, 30) Kitchen (5, 20) Locomotion
	Epochs	60 AntMaze, Locomotion 20 Kitchen
	Batch Size	1024
	Dropout	0.1
	Learning Rate	1e-4
PolicyNet (Multi-Layer Perceptron)	Hidden Layers	2
	Embedding Dim	1024
	Nonlinearity	ReLU
	Epochs	80 AntMaze, Kitchen 100 Gym Locomotion
	Batch Size	1024 AntMaze, Gym Locomotion 256 Kitchen
	Dropout	0
	Learning Rate	1e-3 AntMaze, Gym Locomotion 1e-4 Kitchen

In GCPC, we compress the goal-conditioned future into latent representations and use them to support policy learning. In Section 4.4, we study the effect of explicitly leveraging the decoded future states. We adapt our framework as follows: During the policy learning and evaluation, we first freeze transformer encoder and decoder trained in the first stage. Instead of directly passing the encoded bottlenecks to the PolicyNet, we leverage the pre-trained transformer decoder to decode the bottleneck into goal-conditioned futures. The new PolicyNet is modified to take the observed states, the goal, and the concatenation of the decoded future states. The bottleneck is discarded and not used by the modified PolicyNet.

D.5 Future window length

We further investigate the effect of future window length on policy performance, which decides how far the bottleneck can look into the future during the first stage pretraining. In Table A9, we show that predicting further future would generally bring bigger improvements in AntMaze-Large, emphasizing that planning into long-term future can largely benefit policy performance. We also observe that the improvements brought by enlarging future window are specific to both datasets and the range of future window length. The improvements become marginal once the future window expands beyond a certain size.

Table A9: **Future window length.** In AntMaze-Large, the farther into the future can the bottleneck see during trajectory representation pre-training, the more helpful they are for policy learning.

Future window length p	20	40	70
Large-Diverse	62.4 \pm 5.6	78.2 \pm 4.8	80.6 \pm 3.9
Large-Play	49.6 \pm 6.7	76.6 \pm 5.0	78.2 \pm 3.2
Average	56.0	77.4	79.4

D.6 Goal Sampling and Specification

To perform goal-conditioned imitation learning, we follow [14] to sample an outcome from the future trajectory $\tau_{t:H}$ as the goal. When the goal is in the form of a target state (e.g. in AntMaze and Kitchen tasks), we randomly sample a reachable future state from $\{s_i\}_{i=t+1}^H$ and keeps the task-related subspace as g . Specifically, for AntMaze we take the ant’s (x, y) location as the goal, which are the first two dimensions of the state space; for Kitchen’s goal, we keep the dimensions that indicate the position of the target object in all 7 subtasks and zero out other dimensions (e.g. dimensions that indicate the robot proprioceptive state) in the 30-dimensional state space³. When the goal is represented as the expected return-to-go (e.g. in Gym Locomotion tasks), we use the average return achieved over some number of timesteps into the future as g (i.e. $g = \frac{1}{H-t+1} \sum_{i=t}^H r_i$, where we follow [14] to set H to the constant maximum episode length).

E Pseudocode of GCPC

Algorithm 1 Goal-conditioned Predictive Coding (GCPC) for RvS

- 1: **Input:** Dataset of trajectories $\mathcal{D} = \{\tau\}$, History window length k , Future window length p , Masking ratio r , Bi-directional transformer encoder h_{enc} , Bi-directional transformer decoder h_{dec} , Learnable slot tokens Q , Policy network π
 - 2: **while** First Stage **do**
 - 3: Sample a trajectory and a timestep: $\tau = \{(s_i, a_i)\}_{i=1}^H \sim \mathcal{D}, t \sim [k, H]$
 - 4: Sample a goal g , obtain observed states and full states: $s_h = s_{t-k+1:t}, s_w = s_{t-k+1:t+p}$
 - 5: Randomly mask observed states with masking ratio r : $s_h^m = \text{Masked}(s_h, r)$
 - 6: Encode masked observed states, goal and learnable slot tokens: $B = h_{\text{enc}}(Q, s_h^m, g)$
 - 7: Reconstruct observed and future states with the bottleneck B : $\hat{s}_w = h_{\text{dec}}(B)$
 - 8: Compute loss: $\mathcal{L} = \text{MSE}(\hat{s}_w, s_w)$
 - 9: Update parameters in h_{enc} and h_{dec}
 - 10: **end while**
 - 11: Freeze parameters in h_{enc}
 - 12: **while** Second Stage **do**
 - 13: Sample a trajectory and a timestep: $\tau = \{(s_i, a_i)\}_{i=1}^H \sim \mathcal{D}, t \sim [k, H]$
 - 14: Sample a goal g , obtain observed states: $s_h = s_{t-k+1:t}$
 - 15: Encode observed states, goal and learnable slot tokens: $B_{\text{obs}} = h_{\text{enc}}(Q, s_h, g)$
 - 16: Train the policy network π with the bottleneck B_{obs} : $\hat{a}_t = \pi(B_{\text{obs}}, s_t, g)$
 - 17: Compute loss: $\mathcal{L} = \text{MSE}(\hat{a}_t, a_t)$
 - 18: Update parameters in π
 - 19: **end while**
 - 20: **return** Policy network π
-

F Pre-training mask ratio

In the first stage of GCPC, we randomly mask history states with a masking ratio r . We compare using fixed masking ratios (20%, 40%, 80%) and dynamic masking ratio “D” uniformly sampled from 0%, 20%, 40%, 60% and 80%. Figure A7 shows the influence of different masking ratios on AntMaze and FrankaKitchen. We found that low masking ratios (e.g. 20%) would usually perform worse except on the Kitchen-Mixed dataset, and a high masking ratio (80%) turns out to be more effective, which is similar to the observation in MAE [22]. However, the optimal masking ratio is not consistent across environments. In order to achieve the best overall performance, we adopt dynamic masking ratio “D” in our implementation.

³In the Kitchen experiments, we found it important to zero-out redundant dimensions, such as robot proprioceptive dimensions, when specifying the task goal for goal (state)-conditioned methods. We use this specification for all goal (state)-conditioned methods.

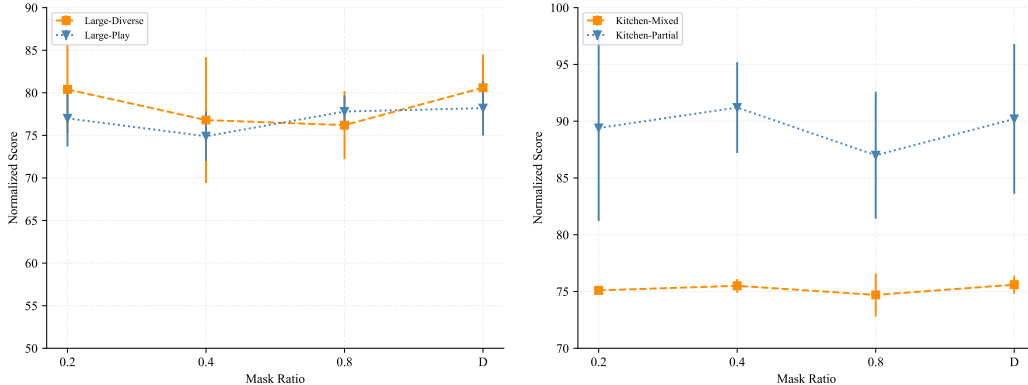


Figure A7: Mask ratio ablation on AntMaze and FrankaKitchen. “D” refers to dynamic mask ratio randomly drawn from 0%, 20%, 40%, 60% and 80%

G Additional Experiments on FrankaKitchen

In Table A10, we present how different pretraining objectives affect policy performance on the FrankaKitchen benchmark. MAE-F and MAE-RC are the only valid objectives in zero-shot setting. In two-stage setting, we observe that action inputs would generally cause larger variance and harm the performance of two predictive coding objectives. Similar to our observations on AntMaze, predictive coding objectives can consistently generate powerful trajectory representations, which yield performance gains on Kitchen tasks.

Table A10: **Objective Ablation on Kitchen-Partial.** We report mean and standard error over 5 seeds.

Kitchen-Partial	AE-H	MAE-H	MAE-F	MAE-RC	MAE-ALL
Zero-shot	–	0	4.4 ± 9.8	4.4 ± 6.5	0
Two-stage (w/ actions)	76.9 ± 23.9	73.6 ± 16.6	86.4 ± 12.5	80.4 ± 18.0	66.8 ± 14.5
Two-stage (w/o actions)	66.4 ± 5.9	72.7 ± 7.0	92.5 ± 4.9	90.2 ± 6.6	68.0 ± 4.9

H Visualizing the Latent Future

In this section, we visualize the latent future by decoding the bottlenecks back into the state space using the pre-trained decoder. We visualize the currently observed state and the decoded future states inside the maze environment. Figure A8 includes two examples extracted from successful evaluation rollouts. The blue part on the left shows the actual position of the agent at a certain timestep s_t during the evaluation and the green part on the right is the latent future predicted based on history states $s_{\leq t}$ and the goal g . We find in the latent future, the agent gradually move towards the goal, which demonstrates that bottlenecks can encode meaningful future trajectories that provide the correct waypoints as subgoals and bring the agent from the current location to the final goal.

Figure A9 illustrates how latent future vary depending on different goal conditions for the same current state. By specifying different goals, the latent future would change correspondingly and point out the right direction for the agent. These visualizations suggest that the bottlenecks have the ability to provide the correct intermediate waypoints based on history states and the goal, which is crucial for long-horizon goal-reaching tasks. In the second example of Figure A9, multiple paths connect the agent and the goal, but bottlenecks encode the shortest one for the agent, which also demonstrates the bottleneck’s ability to stitch sub-optimal trajectories and compose the optimal path.

In Section 4.3, we found that removing the goal from TrajNet input would seriously harm the performance on large AntMaze. In Figure A10, we visualize the latent future without goal conditioning. In both examples, bottlenecks encode latent futures that either move in the opposite direction to the goal or enter a dead end and cause tasks to fail. It again demonstrates that the quality of the encoded

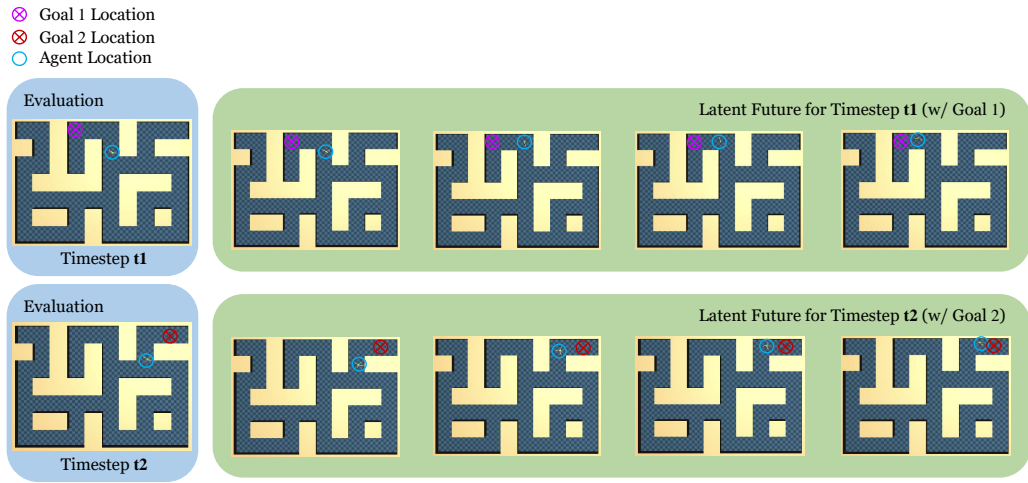


Figure A8: Two latent future examples from successful rollouts. Latent future shows the right path to the goal.

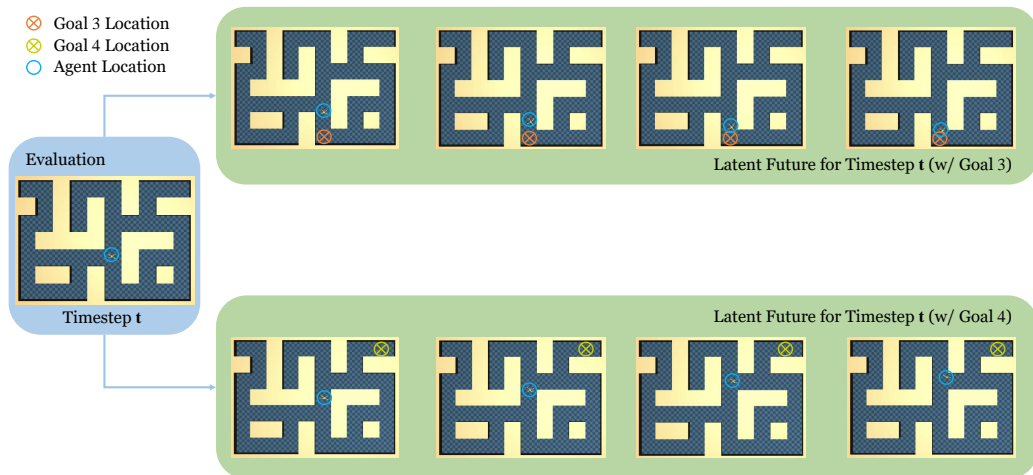


Figure A9: Latent future conditioned on different goals in large AntMaze.

future would significantly affect how policy performs, and providing goal information can prevent misleading future.

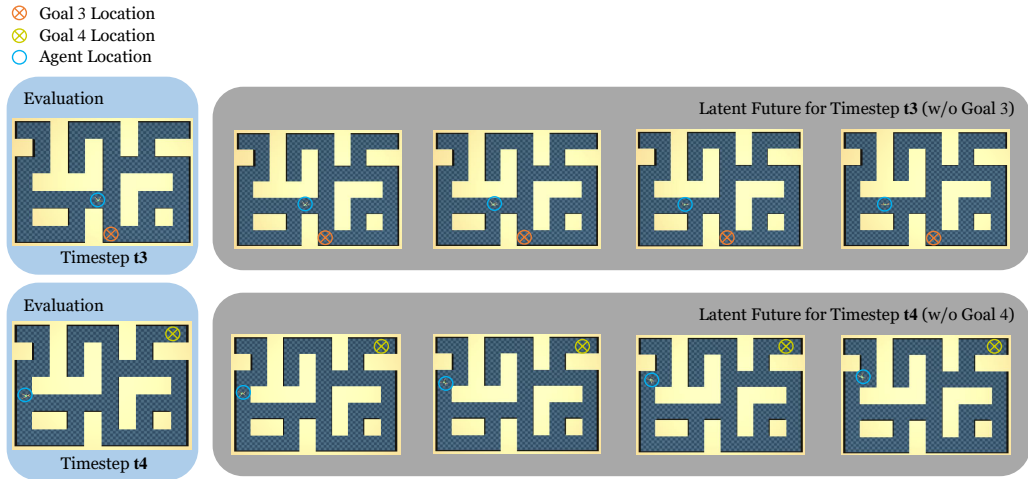


Figure A10: Failure cases after removing goal from TrajNet input. Latent future without goal conditioning would mislead the agent.

I Slot tokens ablation

Table A11 shows how changing the number of slot tokens would affect policy performance on large AntMaze. We observed that using different numbers of slot tokens would not have big impacts on the performance. In our implementation, we uniformly use 4 slot tokens for both trajectory representation learning and policy learning.

Table A11: **The number of slot tokens.** We report mean and standard error over 3 seeds.

# Slot Tokens	1	2	4
Large-Diverse	80.6 \pm 3.5	77.2 \pm 4.9	80.6 \pm 3.9
Large-Play	81.2 \pm 4.4	78.8 \pm 4.7	78.2 \pm 3.2

Acknowledgments and Disclosure of Funding

We appreciate all anonymous reviewers for their constructive feedback. We would like to thank Calvin Luo and Haotian Fu for their discussions and insights, and Tian Yun for the help on this project. This work is in part supported by Adobe, Honda Research Institute, Meta AI, Samsung Advanced Institute of Technology, and a Richard B. Salomon Faculty Research Award for C.S.