

---

# Improving and Generalizing Flow-Based Generative Models with Minibatch Optimal Transport

---

Alexander Tong<sup>1,2</sup> Nikolay Malkin<sup>1,2</sup> Guillaume Huguet<sup>1,2</sup> Yanlei Zhang<sup>1,2</sup> Jarrid Rector-Brooks<sup>1,2</sup>  
Kilian Fatras<sup>1,3</sup> Guy Wolf<sup>1,2</sup> Yoshua Bengio<sup>1,2,4</sup>

## Abstract

Continuous normalizing flows (CNFs) are an attractive generative modeling technique, but they have been held back by limitations in their simulation-based maximum likelihood training. We introduce the generalized *conditional flow matching* (CFM) technique, a family of simulation-free training objectives for CNFs. CFM features a stable regression objective like that used to train the stochastic flow in diffusion models but enjoys the efficient inference of deterministic flow models. In contrast to both diffusion models and prior CNF training algorithms, CFM does not require the source distribution to be Gaussian or require evaluation of its density. A variant of our objective is *optimal transport CFM* (OT-CFM), which creates simpler flows that are more stable to train and lead to faster inference, as evaluated in our experiments. Furthermore, OT-CFM is the first method to compute dynamic OT in a simulation-free way. Training CNFs with CFM improves results on a variety of conditional and unconditional generation tasks, such as inferring single cell dynamics, unsupervised image translation, and Schrödinger bridge inference. Code is available at <https://github.com/atong01/conditional-flow-matching>.

## 1. Introduction

Generative modeling considers the problem of approximating and sampling from a probability distribution. Normalizing flows, which have emerged as a competitive generative modeling method, construct an invertible and efficiently differentiable mapping between a fixed (e.g., standard normal)

<sup>\*</sup>Equal contribution <sup>1</sup>Mila – Québec AI Institute <sup>2</sup>Université de Montréal <sup>3</sup>McGill University <sup>4</sup>CIFAR Fellow. Correspondence to: Alexander Tong <alexander.tong@mila.quebec>.

Accepted to ICML workshop on Frontiers in Learning, Control, and Dynamical Systems. Copyright 2023 by the author(s).

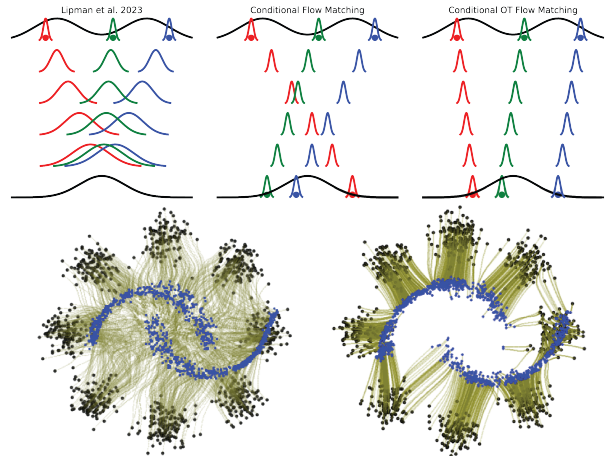


Figure 1: **Above:** Conditional flows from (a) Lipman et al. (2023) which is restricted to generating from the normal distribution, (b) the proposed Conditional Flow Matching (CFM) and (c) its variant Optimal Transport Conditional Flow Matching (OT-CFM). **Below:** Learned flows (green) from moons (blue) to 8-Gaussians (black) using CFM (left) and OT-CFM (right), not possible using FM.

distribution and the data distribution (Rezende & Mohamed, 2015). While original normalizing flow work specified this mapping as a static composition of invertible modules, continuous normalizing flows (CNFs) express the mapping by a neural ordinary differential equation (ODE) (Chen et al., 2018). Unfortunately, CNFs have been held back by difficulties in training and scaling to large datasets (Chen et al., 2018; Grathwohl et al., 2019; Onken et al., 2021).

Meanwhile, diffusion models, which are the current state of the art on many generative modeling tasks (Dhariwal & Nichol, 2021; Austin et al., 2021; Corso et al., 2022; Watson et al., 2022b), approximate a *stochastic* differential equation (SDE) that transforms a simple density to the data distribution. Diffusion models owe their success in part to their simple regression training objective, which does not require simulating the SDE during training. Recently, Lipman et al. (2023) showed that CNFs could also be trained using a regression of the ODE’s drift similar to training of diffusion models, an objective called *flow matching* (FM). FM was

shown to produce high-quality samples and stabilize CNF training. However, FM models make the assumption of a Gaussian source distribution. The **first main contribution** of the present paper is to relax this assumption and enable learning of ODE bridges between two arbitrary distributions. The general class of objectives we propose, termed *conditional flow matching* (CFM), widely broadens the scope of applications of FM.

A major drawback of both CNF (ODE) and diffusion (SDE) models compared to other generative models (e.g., variational autoencoders (Kingma & Welling, 2014), (discrete-time) normalizing flows, and generative adversarial networks (Goodfellow et al., 2014)), is that integration of the ODE or SDE requires many passes through the network to generate a high-quality sample, resulting in a long inference time. This drawback has motivated work on enforcing an optimal transport (OT) property in neural ODEs (Tong et al., 2020; Finlay et al., 2020; Onken et al., 2021; Liu, 2022; Liu et al., 2023), yielding flows that can be integrated accurately in fewer neural network evaluations. Such regularizations have not yet been studied for models trained with FM-like objectives. Our **second main contribution** is a variant of CFM called *optimal transport conditional flow matching* (OT-CFM) that *approximates dynamic OT via CNFs*. We show that OT-CFM not only improves the efficiency of training and inference, but also leads to more accurate OT flows than existing neural OT models based on ODEs (Tong et al., 2020; Finlay et al., 2020), SDEs (De Bortoli et al., 2021; Vargas et al., 2021), or input-convex neural networks (Makkuva et al., 2020). Furthermore, an entropic variant of OT-CFM can be used to efficiently train a CNF to match the probability flow of a Schrödinger bridge. **Our work is the first to enable simulation-free training of dynamic OT maps and Schrödinger bridge probability flows for arbitrary source and target distributions.**

In summary, our contributions are:

- (1) We introduce a novel class of objectives called (generalized) *conditional flow matching* (§3.1). CFM is able to learn conditional generative models from any samplable source distribution by conditioning on paired source and target samples, generalizing existing methods (Lipman et al., 2023; Albergo & Vanden-Eijnden, 2023; Liu, 2022; Pooladian et al., 2023).
- (2) We consider a special case of CFM that draws source and target samples according to an optimal transport plan, allowing us to solve the dynamic OT and Schrödinger bridge problems in a simulation-free way, using only static OT maps between marginal distributions (§3.2).
- (3) We evaluate CFM and OT-CFM in experiments on single-cell dynamics, image generation, unsupervised image translation, and energy-based models. We show that the OT-CFM objective leads to more efficient train-

ing and decreases inference time while finding better approximate solutions to the dynamic OT and Schrödinger bridge problems (§5).

## 2. Background: Optimal transport and neural ODEs

Throughout the paper, we consider the setting of a pair of data distributions over  $\mathbb{R}^d$  with (possibly unknown) densities  $q(x_0)$  and  $q(x_1)$  (also denoted  $q_0, q_1$ ). Generative modeling considers the task of fitting a mapping  $f$  from  $\mathbb{R}^d$  to  $\mathbb{R}^d$  that transforms  $q_0$  to  $q_1$ , that is, if  $x_0$  is distributed with density  $q_0$  then  $f(x_0)$  is distributed with density  $q_1$ . This includes both the typical case when  $q_0$  is an easily sampled density, such as a Gaussian, and the case when  $q_0$  and  $q_1$  are empirical data distributions available as finite sets of samples.

### 2.1. ODEs and probability flows

A smooth<sup>1</sup> time-varying vector field  $u : [0, 1] \times \mathbb{R}^d \rightarrow \mathbb{R}^d$  defines an ordinary differential equation:

$$dx = u_t(x) dt, \quad (1)$$

where we use the notation  $u_t(x)$  interchangeably with  $u(t, x)$ . Denote by  $\phi_t(x)$  the solution of the ODE (1) with initial conditions  $\phi_0(x) = x$ ; that is,  $\phi_t(x)$  is the point  $x$  transported along the vector field  $u$  from time 0 up to time  $t$ .

Given a density  $p_0$  over  $\mathbb{R}^d$ , the integration map  $\phi_t$  induces a pushforward  $p_t = [\phi_t]_{\#}(p_0)$ , which is the density of points  $x \sim p_0$  transported along  $u$  from time 0 to time  $t$ . The time-varying density  $p_t$ , viewed as a function  $p : [0, 1] \times \mathbb{R}^d \rightarrow \mathbb{R}$ , is characterized by the well-known *continuity equation*:

$$\frac{\partial p}{\partial t} = -\nabla \cdot (p_t u_t) \quad (2)$$

and the initial conditions  $p_0$ . Under these conditions,  $u$  is said to be a *probability flow ODE* for  $p$ , and  $p$  is the (*marginal*) *probability path* generated by  $u$ .

**Approximating ODEs with neural networks.** Suppose the probability path  $p_t(x)$  and the vector field  $u_t(x)$  generating it are known and  $p_t(x)$  can be tractably sampled. If  $v_\theta(\cdot, \cdot) : [0, 1] \times \mathbb{R}^d \rightarrow \mathbb{R}^d$  is a time-dependent vector field parametrized as a neural network with weights  $\theta$ ,  $v_\theta$  can be regressed to  $u$  via the **flow matching (FM)** objective:

$$\mathcal{L}_{\text{FM}}(\theta) = \mathbb{E}_{t \sim \mathcal{U}(0,1), x \sim p_t(x)} \|v_\theta(t, x) - u_t(x)\|^2. \quad (3)$$

Lipman et al. (2023) used a version of this objective with a stochastic regression target to fit ODEs that map a Gaussian

<sup>1</sup>To be precise, to ensure the uniqueness of integral curves (and thus of the corresponding flow), we assume the vector field  $u$  is at least (locally) Lipschitz in  $x$  and Bochner integrable in  $t$ .

density  $q_0$  to a target  $q_1$ . **The starting point for this work is that this objective becomes intractable for general source and target distributions;** in §3, we develop generalizations that allow more flexible and efficient generative modeling.

**The case of Gaussian marginals.** Consider the special case of an ODE whose marginal densities are Gaussian:  $p_t(x) = \mathcal{N}(x \mid \mu_t, \sigma_t^2)$ . While the ODE that generates these marginal densities is not unique, one of the simplest is the one that satisfies

$$\phi_t(x) = \mu_t + \sigma_t x, \quad (4)$$

which is unique by the following theorem.

**Theorem 2.1** (Theorem 3 of Lipman et al. (2023)). *The unique vector field whose integration map satisfies (4) has the form*

$$u_t(x) = \frac{\sigma_t'}{\sigma_t}(x - \mu_t) + \mu_t', \quad (5)$$

where  $\sigma_t'$  and  $\mu_t'$  denote the time derivative of  $\sigma_t$  and  $\mu_t$ , respectively, and the vector field  $u$  with initial conditions  $\mathcal{N}(\mu_0, \sigma_0^2)$  generates the Gaussian probability path  $p_t(x) = \mathcal{N}(x \mid \mu_t, \sigma_t^2)$ .

## 2.2. Static and dynamic optimal transport

The (static) optimal transport problem seeks a mapping from one measure to another that minimizes a displacement cost. A case of greatest interest is the 2-Wasserstein distance between distributions  $q_0$  and  $q_1$  on  $\mathbb{R}^d$  with respect to the Euclidean distance cost  $c(x, y) = \|x - y\|$ , defined by

$$W(q_0, q_1)_2^2 = \inf_{\pi \in \Pi} \int_{\mathcal{X}^2} c(x, y)^2 d\pi(x, y), \quad (6)$$

where  $\Pi$  denotes the set of all joint probability measures on  $\mathbb{R}^d \times \mathbb{R}^d$  whose marginals are  $q_0$  and  $q_1$ .

The dynamic form of the 2-Wasserstein distance is defined by an optimization problem over vector fields  $u_t$  that transform one measure to the other:

$$W(q_0, q_1)_2^2 = \inf_{p_t, u_t} \int_{\mathbb{R}^d} \int_0^1 p_t(x) \|u_t(x)\|^2 dt dx, \quad (7)$$

with  $p_t \geq 0$  and subject to the boundary conditions  $p_0 = q_0$ ,  $p_1 = q_1$  and the continuity equation (2).

Tong et al. (2020); Finlay et al. (2020) showed that CNFs with  $L^2$  regularization approximate dynamic optimal transport. For general marginals, however, these models required integrating over and backpropagating through tens to hundreds of function evaluations, resulting in both numerical and efficiency issues. We aim to avoid these issues by directly regressing to the vector field in a simulation-free way.

Optimal transport is also related to the Schrödinger bridge (SB) problem (Léonard, 2014b). We show in Section 3.2.4 that a variant of the algorithm we propose recovers the probability flow of the solution to a SB problem with a Brownian noise reference process.

## 3. Conditional flow matching: ODEs from static couplings

### 3.1. Vector fields generating mixtures of probability paths

Suppose that the marginal probability path  $p_t(x)$  is a mixture of probability paths  $p_t(x|z)$  that vary with some latent conditioning variable  $z$ , that is,

$$p_t(x) = \int p_t(x|z)q(z) dz, \quad (8)$$

where  $q(z)$  is some distribution over the latent variable. If the probability path  $p_t(x|z)$  is generated by the vector field  $u_t(x|z)$  from initial conditions  $p_0(x|z)$  (see §2.1), then the vector field

$$u_t(x) := \mathbb{E}_{q(z)} \frac{u_t(x|z)p_t(x|z)}{p_t(x)} \quad (9)$$

generates the probability path  $p_t(x)$ , under some mild conditions:

**Theorem 3.1.** *The marginal vector field (9) generates the probability path (8) from initial conditions  $p_0(x)$ .*

All proofs appear in Appendix A. This surprising result extends Lipman et al. (2023, Theorem 1) to general conditioning variables and delineates some minor conditions on  $q(z)$ .

**A regression objective for mixtures.** We are interested in the case where conditional probability paths  $p_t(x|z)$  and vector fields  $u_t(x|z)$  are known and have a simple form, and we wish to recover the vector field  $u_t(x)$ , defined by (9), that generates the probability path  $p_t(x)$ . Exact computation via (9) is generally intractable, as the denominator  $p_t(x)$  is defined by an integral (8) that may be difficult to evaluate. Instead, we develop an unbiased stochastic objective for regression of a learned vector field to  $u_t(x)$ , which generalizes the unconditional flow matching objective (3).

Let  $v_\theta(\cdot, \cdot) : [0, 1] \times \mathbb{R}^d \rightarrow \mathbb{R}^d$  be a time-dependent vector field parametrized as a neural network with weights  $\theta$ . Define the **conditional flow matching (CFM)** objective:

$$\mathcal{L}_{\text{CFM}}(\theta) = \mathbb{E}_{t, q(z), p_t(x|z)} \|v_\theta(t, x) - u_t(x|z)\|^2. \quad (10)$$

The CFM objective describes how to regress against the marginal vector field  $u_t(x)$  given by (9) with access only to samples from the conditional probability path  $p_t(x|z)$  and conditional vector fields  $u_t(x|z)$ . This is formalized in the following theorem.

**Theorem 3.2.** *If  $p_t(x) > 0$  for all  $x \in \mathbb{R}^d$  and  $t \in [0, 1]$ , then, up to a constant independent of  $\theta$ ,  $\mathcal{L}_{\text{CFM}}$  and  $\mathcal{L}_{\text{FM}}$  are equal, and hence*

$$\nabla_\theta \mathcal{L}_{\text{FM}}(\theta) = \nabla_\theta \mathcal{L}_{\text{CFM}}(\theta). \quad (11)$$

**Algorithm 1** Conditional Flow Matching

---

**Input:** Efficiently samplable  $q(z)$ ,  $p_t(x|z)$ , and computable  $u_t(x|z)$  and initial network  $v_\theta$ .

**while** Training **do**

$z \sim q(z); \quad t \sim \mathcal{U}(0, 1); \quad x \sim p_t(x|z)$   
 $\mathcal{L}_{\text{CFM}}(\theta) \leftarrow \|v_\theta(t, x) - u_t(x|z)\|^2$   
 $\theta \leftarrow \text{Update}(\theta, \nabla_\theta \mathcal{L}_{\text{CFM}}(\theta))$

**return**  $v_\theta$

---

The CFM objective is useful when the marginal vector field  $u_t(x)$  is intractable but the conditional vector field  $u_t(x|z)$  is simple. As long as we can efficiently sample from  $q(z)$  and  $p_t(x|z)$  and calculate  $u_t(x|z)$ , we can use this stochastic objective to regress  $v_\theta$  to the marginal vector field  $u_t(x)$ .

We discuss the variance arising from the stochastic regression target, and ways to reduce it, in §C.1 and Propositions B.2 and B.3.

### 3.2. Sources of conditional probability paths

In this section, we introduce several forms of CFM depending on the choices of  $q(z)$ ,  $p_t(\cdot|z)$ , and  $u_t(\cdot|z)$ . All of the CFM variants and related objectives from prior work are summarized in Table 1.

- §3.2.1: We interpret the algorithm of Lipman et al. (2023) (FM from a Gaussian) as a special case of CFM.
- §3.2.2: We relax the Gaussian source requirement by letting the condition  $z$  be a pair  $(x_0, x_1)$  of an initial and a terminal point. In the basic form of CFM (I-CFM), we take the distribution  $q(z)$  to equal  $q(x_0)q(x_1)$ , allowing generative modeling with an arbitrary source distribution.
- §3.2.3: We consider joint distributions  $q(z) = q(x_0, x_1)$  that are given by minibatch optimal transport maps, causing the learned flow to be an (approximate) OT flow.
- §3.2.4: we consider  $q(z)$  given by an entropy-regularized OT map and show that the CFM objective with this  $q(z)$  solves the Schrödinger bridge problem.

#### 3.2.1. FM FROM THE GAUSSIAN

Lipman et al. (2023) considered the problem of unconditional generative modeling given a training dataset. Identifying the condition  $z$  with a single datapoint  $z := x_1$ , and choosing a smoothing constant  $\sigma > 0$ , one sets

$$p_t(x|z) = \mathcal{N}(x | tx_1, (t\sigma - t + 1)^2), \quad (12)$$

$$u_t(x|z) = \frac{x_1 - (1 - \sigma)x}{1 - (1 - \sigma)t}, \quad (13)$$

which is a probability path from the standard normal distribution ( $p_0(x|z) = \mathcal{N}(x; 0, 1)$ ) to a Gaussian distribution centered at  $x_1$  with standard deviation  $\sigma$  ( $p_1(x|z) = \mathcal{N}(x; x_1, \sigma^2)$ ). If one sets  $q(z) = q(x_1)$  to be the uniform distribution over the training dataset, the objective intro-

duced by Lipman et al. (2023) is equivalent to the CFM objective (10) for this conditional probability path.

We emphasize that although the *conditional* probability path  $p_t(x|z)$  is an optimal transport path from  $p_0(x|z)$  to  $p_1(x|z)$ , the *marginal* path  $p_t(x)$  is **not** in general an OT path from the standard normal  $p_0(x)$  to the data distribution  $p_1(x)$ .

#### 3.2.2. BASIC FORM OF CFM: INDEPENDENT COUPLING

In the basic form of CFM (I-CFM), we identify  $z$  with a pair of random variables, a source point  $x_0$  and a target point  $x_1$ , and set  $q(z) = q(x_0)q(x_1)$ . We let the conditionals be Gaussian flows between  $x_0$  and  $x_1$  with standard deviation  $\sigma$ , defined by

$$p_t(x|z) = \mathcal{N}(x | tx_1 + (1 - t)x_0, \sigma^2), \quad (14)$$

$$u_t(x|z) = x_1 - x_0. \quad (15)$$

We note that the formulation of  $u_t(x|z)$  follows from an application of Theorem 2.1 to the conditional probability path with  $\mu_t = tx_1 + (1 - t)x_0$  and  $\sigma_t = \sigma$ . Furthermore, we note that  $p_t(x|z)$  is efficiently samplable and  $u_t$  is efficiently computable, thus gradient descent on  $\mathcal{L}_{\text{CFM}}$  is also efficient. For this choice of  $z$ ,  $p_t(\cdot|z)$ , and  $u_t(\cdot|z)$ , we know the marginal boundary probabilities approach  $q_0$  and  $q_1$  respectively as  $\sigma \rightarrow 0$ . This is made explicit in the following Proposition:

**Proposition 3.3.** *The marginal  $p_t$  corresponding to  $q(z) = q(x_0)q(x_1)$  and the  $p_t(x|z)$ ,  $u_t(x|z)$  in eqs. 14 and 15 has boundary conditions  $p_1 = q_1 * \mathcal{N}(x | 0, \sigma^2)$  and  $p_0 = q_0 * \mathcal{N}(x | 0, \sigma^2)$ , where  $*$  denotes the convolution operator.*

In particular, as  $\sigma \rightarrow 0$ , the marginal vector field  $u_t(x)$  approaches one that transports the distribution  $q(x_0)$  to  $q(x_1)$  and can thus be seen as a generative model of  $x_1$ . Note that there is no requirement for  $q(x_0)$  to be Gaussian. Conditioning on  $x_0$  allows us to generalize flow matching to arbitrary source distributions with intractable densities.

As in the case of FM from a Gaussian, while each conditional flow is the dynamic optimal transport flow from  $\mathcal{N}(x_0, \sigma^2)$  to  $\mathcal{N}(x_1, \sigma^2)$ , the marginal vector field  $u_t(x)$  is not necessarily an OT flow. We note that I-CFM is closely related to the algorithms proposed by Albergo & VandenEijnden (2023); Liu (2022).

**Connection to FM from the Gaussian.** There exists a set of conditional probability paths conditioned on  $x_1$  and  $x_0 \sim \mathcal{N}(0, 1)$  that have an equivalent probability flow to the marginal  $p_t$  of flow matching from the Gaussian (§3.2.1), which is only conditioned on  $x_1$ . These paths are defined by

$$p_t(x|z) = \mathcal{N}(x | tx_1 + (1 - t)x_0, (\sigma t)^2 + 2\sigma t(1 - t)). \quad (16)$$

Prop. B.1 states an equivalence between I-CFM with these paths and the objective from §3.2.1.



Table 1: Probability path definitions for existing methods which fit in the generalized conditional flow matching framework (top) and our newly defined paths (bottom). We define two new probability path objectives that can handle general source distributions and optimal transport flows.

Probability Path	$q(z)$	$\mu_t(z)$	$\sigma_t$	Cond. OT	Marginal OT	General source
Var. Exploding (Song & Ermon, 2019)	$q(x_1)$	$x_1$	$\frac{\sigma_{1-t}}{\sigma}$	×	×	×
Var. Preserving (Ho et al., 2020)	$q(x_1)$	$\alpha_{1-t}x_1$	$\sqrt{1 - \alpha_{1-t}^2}$	×	×	×
Flow Matching (Lipman et al., 2023)	$q(x_1)$	$tx_1$	$t\sigma - t + 1$	✓	×	×
Independent CFM ( $\approx$ Albergo & Vanden-Eijnden (2023); Liu (2022))	$q(x_0)q(x_1)$	$tx_1 + (1-t)x_0$	$\sigma$	✓	×	✓
Optimal Transport CFM	$\pi(x_0, x_1)$	$tx_1 + (1-t)x_0$	$\sigma$	✓	✓	✓
Schrödinger Bridge CFM	$\pi_{2\sigma^2}(x_0, x_1)$	$tx_1 + (1-t)x_0$	$\sigma\sqrt{t(1-t)}$	✓	✓	✓

### 3.2.3. OPTIMAL TRANSPORT CFM

In this section, we present our second main contribution. The formulation in the previous section can readily be generalized to distributions  $q(z) = q(x_0, x_1)$  in which  $x_0$  and  $x_1$  are not independent, as long as  $q(z)$  has marginals  $q(x_0)$  and  $q(x_1)$ . Therefore, we propose to set  $q(z)$  to be the 2-Wasserstein optimal transport map  $\pi$  achieving the infimum in (6), namely,

$$q(z) := \pi(x_0, x_1). \quad (17)$$

In this case,  $z$  is still a tuple of points, but instead of  $x_0, x_1$  being sampled independently from their marginal distributions, they are sampled jointly according to the optimal transport map  $\pi$ . We call this method *optimal transport CFM* (OT-CFM). If one uses the  $p_t(x|z)$  defined by eq. 14 and  $u_t(x|z)$  in eq. 15, OT-CFM is equivalent to *dynamic* optimal transport in the following sense.

**Proposition 3.4.** *The results of Prop. 3.3 also hold for  $q(z)$  in eq. 17. Furthermore, assume  $q_0$  admits a density with respect to the Lebesgue measure. Then as  $\sigma^2 \rightarrow 0$  the marginal path  $p_t$  and field  $u_t$  minimize eq. 7, i.e.,  $u_t$  solves the dynamic optimal transport problem between  $q_0$  and  $q_1$ .*

To the best of our knowledge, OT-CFM is the first method to solve the dynamic OT problem in a simulation-free manner, using only the static OT map between  $q(x_0)$  and  $q(x_1)$  and regression to the conditional flow at intermediate time steps.

**Minibatch OT approximation.** For large datasets, the transport plan  $\pi$  can be difficult to compute and store due to OT’s cubic time and quadratic memory complexity in the number of samples (Cuturi, 2013; Tong et al., 2020). If this cost is prohibitive, we can use a minibatch approximation of OT similar to Fatras et al. (2021b). Although minibatch OT incurs an error relative to the exact OT solution, it has been successfully used in many applications like domain adaptation or generative modeling (Damodaran et al., 2018; Genevay et al., 2018). Specifically, for each batch of data ( $\{x_0^{(i)}\}_{i=1}^B, \{x_1^{(i)}\}_{i=1}^B$ ) seen during training, we sample pairs of points from the joint distribution  $\pi_{\text{batch}}$  given by the OT plan between the source and target points in the batch. (The OT batch size need not match the optimization batch size, but we keep them equal for simplicity.) Thus, we solve

a minibatch approximation of dynamic optimal transport. However, when the OT batch size equals the support size of  $(q_0, q_1)$ , we recover exact OT and therefore, by Prop. 3.4, learn the exact dynamic optimal transport. We show empirically that the batch size can be much smaller than the full dataset size and still give good performance, which aligns with prior studies (Fatras et al., 2020; 2021a).

### 3.2.4. SCHRÖDINGER BRIDGE CFM

Recently, there has been significant effort in learning diffusion models with general source distributions, formulated as a Schrödinger bridge problem (De Bortoli et al., 2021; Vargas et al., 2021). Here we show that SB-CFM, an entropic variant of OT-CFM, can be used to train an ODE to match the probability flow of a Schrödinger bridge with a Brownian motion reference process.

Let  $p_{\text{ref}}$  be the standard Wiener process scaled by  $\sigma$  with initial-time marginal  $p_{\text{ref}}(x_0) = q(x_0)$ . The Schrödinger bridge problem (Schrödinger, 1932) seeks the process  $\pi$  that is closest to  $p_{\text{ref}}$  while having initial and terminal marginal distributions specified by the data distribution  $q(x_0)$  and  $q(x_1)$ :

$$\pi^* := \arg \min_{\pi(x_0)=q(x_0), \pi(x_1)=q(x_1)} \text{KL}(\pi \| p_{\text{ref}}). \quad (18)$$

We define the joint distribution

$$q(z) := \pi_{2\sigma^2}(x_0, x_1) \quad (19)$$

where  $\pi_{2\sigma^2}$  is the solution of the entropy-regularized optimal transport problem (Cuturi, 2013) with cost  $\|x_0 - x_1\|$  and entropy regularization  $\lambda = 2\sigma^2$  (see eq. 32 for the background on entropic OT). We set the conditional path distribution to be a Brownian bridge with diffusion scale  $\sigma$  between  $x_0$  and  $x_1$ , with probability flow and generating vector field

$$p_t(x|z) = \mathcal{N}(x | tx_1 + (1-t)x_0, t(1-t)\sigma^2) \quad (20)$$

$$u_t(x|z) = \frac{1-2t}{2t(1-t)}(x - (tx_1 + (1-t)x_0)) + (x_1 - x_0), \quad (21)$$

where  $u_t$  is given by eq. 5. The marginal coupling  $\pi_{2\sigma^2}$  and  $u_t(x|z)$  define  $u_t(x)$ , which is approximated by the

regression objective in Algorithm 4. The solution of the SB is known to be the map which is the solution of the entropically-regularized OT problem, motivating the next proposition.

**Proposition 3.5.** *The marginal vector field  $u_t(x)$  defined by eq. 19 and eq. 21 generates the same marginal probability path as the solution  $\pi^*$  to the SB problem in eq. 18.*

While we define SB-CFM with an entropic regularization coefficient of  $\varepsilon = 2\sigma^2$ , the flow still matches the marginals for any choice of  $\varepsilon$ . Interestingly, we recover OT-CFM when  $\varepsilon \rightarrow 0$  and I-CFM when  $\varepsilon \rightarrow \infty$ .

## 4. Related work

**Simulation-free continuous-time modeling.** Simulation-free training is common in stochastic flow models where backpropagating through the simulation is numerically challenging and has high variance (Li et al., 2020). While these diffusion models have recently achieved exceptional generative performance on many tasks (Sohl-Dickstein et al., 2015; Song & Ermon, 2019; 2020; Ho et al., 2020; Song et al., 2021b; Dhariwal & Nichol, 2021; Watson et al., 2022b), their simulation requires an inherently costly SDE simulation with many follow-up works to improve inference efficiency (Lu et al., 2022; Salimans & Ho, 2022; Watson et al., 2022a; Song et al., 2021a; Bao et al., 2022). These methods generally consider a simple Gaussian diffusion process, and do not consider generalizing the source distribution. Other works consider general source distributions but this makes optimization and inference more challenging, needing multiple iterations or other tricks to perform well (Wang et al., 2021; De Bortoli et al., 2021; Vargas et al., 2021).

Prior work considering simulation-free training of CNFs considers algorithms that are equivalent to CFM with Gaussian source distribution (Rozen et al., 2021; Ben-Hamu et al., 2022; Lipman et al., 2023) or independent samples from  $q_0, q_1$  (Albergo & Vanden-Eijnden, 2023; Albergo et al., 2023; Neklyudov et al., 2022). Recent work also studies Schrödinger bridges from unpaired samples (Shi et al., 2022) and regularization of flows using dynamic OT (Liu et al., 2023). Contemporaneously with our work, Pooladian et al. (2023) proposes objectives closely related to our OT-CFM and SB-CFM, albeit with a focus on generative modeling in high dimensions, rather than on high-fidelity solutions to the dynamic OT and Schrödinger bridge problems.

**Dynamic optimal transport.** There are a variety of methods that consider dynamic OT between continuous distributions with neural networks; however, these require constrained architectures (Leygonie et al., 2019; Makkuva et al., 2020; Bunne et al., 2022) or use a regularized CNF, which is challenging to optimize (Tong et al., 2020; Finlay et al., 2020; Onken et al., 2021; Hugué et al., 2022a). With our work it is possible to achieve optimal transport flows without

either of these constraints.

## 5. Experiments

In this section we empirically evaluate the I-CFM, OT-CFM, and SB-CFM objectives, as well as algorithms from prior work, with respect to both optimal transport and generative modeling criteria. All experiment details can be found in §E.

### 5.1. Low-dimensional data: Optimal transport and faster convergence

**OT-CFM solves dynamic OT.** We evaluate how well various models perform dynamic optimal transport and generative modeling in low dimensions.<sup>2</sup> Table 2 summarizes our results showing that OT-CFM flows generalize better to the test set and are very close to the dynamic OT paths as measured by normalized path energy. We find transforming moons $\leftrightarrow$ 8gaussians to be particularly challenging to learn for I-CFM as compared to OT-CFM; the learned paths are depicted in Figure 1 (bottom). Although OT-CFM uses a minibatch OT map, we find that OT-CFM requires surprisingly small batches to approximate the OT map well, suggesting some generalization advantages of the network optimization (Figure S2).

**OT-CFM yields faster training.** By conditioning on minibatch optimal transport flows, OT-CFM is substantially easier to train, which we posit is due to the variance reduction of the conditional flow. In Figure 2 (left), we evaluate the performance over time of OT-CFM against CFM and FM objectives. For the same number of steps OT-CFM has better performance on the validation set. In Table S1, we compare the training times for various Neural OT methods whose performance can be seen in Table 2. Simulation-free optimization is significantly faster to train with equal or superior performance.

**OT-CFM yields faster inference.** We next evaluate the quality of samples during inference time. In Figure 2 (right), we compare the quality of samples for different number of function evaluations (NFEs) across different flow matching objectives. In this experiment we sample from the source distribution test set and simulate the ODE over time for different solvers. We find that OT-CFM consistently requires fewer evaluations to achieve the same quality and achieves better quality with the same NFEs. This is consistent with previous work, which found OT paths lead to faster, higher quality inference in regularized CNFs (Finlay et al., 2020; Onken et al., 2021) and flow matching vs. stan-

<sup>2</sup>To measure how well a model solves the OT problem we use normalized path energy (NPE), defined via the 2-Wasserstein distance as  $\text{NPE}(v_\theta) = |\text{PE}(v_\theta) - W_2^2(q_0, q_1)| / W_2^2(q_0, q_1)$ , where the path energy (PE) is  $\text{PE}(v_\theta) = \mathbb{E}_{x(0) \sim q(x_0)} \int_0^1 \|v_\theta(t, x(t))\|^2 dt$ .

Table 2: Comparison of neural optimal transport methods over four datasets and with  $(\mu \pm \sigma)$  over five seeds in terms of fit (2-Wasserstein), optimal transport performance (normalized path energy), and Runtime. ‘—’ indicates a method that requires a Gaussian source. Best in **bold**. CFM and RF models are trained on a single CPU core, other baselines are trained with a GPU and two CPUs.

	2-Wasserstein Error ( $\downarrow$ )				Normalized Path Energy ( $\downarrow$ )				Train time (s) $\times 10^3$	
	8gaussians	moons-8gaussians	moons	scurve	8gaussians	moons-8gaussians	moons	scurve	Avg.	
OT-CFM	1.262 $\pm$ 0.348	<b>1.923 <math>\pm</math> 0.391</b>	<b>0.239 <math>\pm</math> 0.048</b>	<b>0.264 <math>\pm</math> 0.093</b>	<b>0.018 <math>\pm</math> 0.014</b>	<b>0.053 <math>\pm</math> 0.035</b>	0.087 $\pm$ 0.061	<b>0.027 <math>\pm</math> 0.026</b>	1.129 $\pm$ 0.335	
I-CFM	1.284 $\pm$ 0.384	1.977 $\pm$ 0.266	0.338 $\pm$ 0.109	0.333 $\pm$ 0.060	0.222 $\pm$ 0.032	2.738 $\pm$ 0.181	0.841 $\pm$ 0.148	0.867 $\pm$ 0.117	<b>0.630 <math>\pm</math> 0.365</b>	
2-RF (Liu, 2022)	1.436 $\pm$ 0.344	2.211 $\pm$ 0.423	0.278 $\pm$ 0.026	0.395 $\pm$ 0.111	0.069 $\pm$ 0.027	0.149 $\pm$ 0.101	<b>0.076 <math>\pm</math> 0.067</b>	0.112 $\pm$ 0.085	0.862 $\pm$ 0.166	
3-RF (Liu, 2022)	1.337 $\pm$ 0.367	2.700 $\pm$ 0.587	0.305 $\pm$ 0.026	0.395 $\pm$ 0.082	0.055 $\pm$ 0.043	0.123 $\pm$ 0.112	0.084 $\pm$ 0.051	0.129 $\pm$ 0.075	0.954 $\pm$ 0.116	
FM (Lipman et al., 2023)	1.062 $\pm$ 0.196	—	0.246 $\pm$ 0.077	0.377 $\pm$ 0.099	0.174 $\pm$ 0.030	—	0.778 $\pm$ 0.144	0.772 $\pm$ 0.081	0.708 $\pm$ 0.370	
Reg. CNF (Finlay et al., 2020)	1.144 $\pm$ 0.075	—	0.376 $\pm$ 0.040	0.581 $\pm$ 0.195	0.274 $\pm$ 0.060	—	0.620 $\pm$ 0.088	0.586 $\pm$ 0.503	8.021 $\pm$ 3.288	
CNF (Chen et al., 2018)	<b>1.055 <math>\pm</math> 0.059</b>	—	0.387 $\pm$ 0.065	0.645 $\pm$ 0.343	0.151 $\pm$ 0.064	—	2.937 $\pm$ 1.973	10.548 $\pm$ 8.100	18.810 $\pm$ 12.677	
ICNN (Makkuva et al., 2020)	1.771 $\pm$ 0.398	2.193 $\pm$ 0.136	0.532 $\pm$ 0.046	0.753 $\pm$ 0.068	0.747 $\pm$ 0.029	0.832 $\pm$ 0.004	0.267 $\pm$ 0.010	0.344 $\pm$ 0.045	2.912 $\pm$ 0.626	

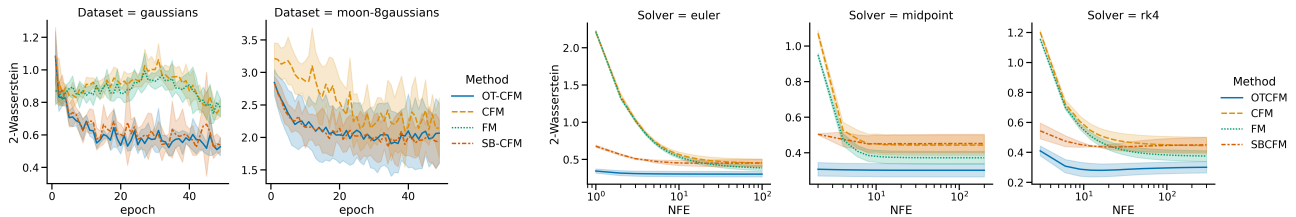


Figure 2: **Left:** OT-CFM trains faster, in terms of validation set error, than CFM and FM models. **Right:** With different ODE integrators, OT-CFM reduces the error for a fixed number of function evaluations during inference.

Table 3: Schrödinger bridge flow comparison, showing average error over flow time to ground truth averaged over 5 models for SB-CFM and 5 dynamics from DSB.

	SB-CFM	DSB (De Bortoli et al., 2021)
8gaussians	<b>0.454 <math>\pm</math> 0.164</b>	1.440 $\pm$ 0.720
moon-8gaussians	<b>1.377 <math>\pm</math> 0.229</b>	2.407 $\pm$ 1.025
moons	<b>0.283 <math>\pm</math> 0.048</b>	0.333 $\pm$ 0.129
scurve	<b>0.297 <math>\pm</math> 0.064</b>	0.383 $\pm$ 0.134

standard variance-preserving and variance-exploding probability paths (Lipman et al., 2023).

**SB-CFM reproduces Schrödinger bridge flows.** There are a number of methods which theoretically converge to a Schrödinger bridge between two datasets. In Table 3 we compare SB-CFM and the diffusion Schrödinger bridge (DSB) method introduced in De Bortoli et al. (2021) on the quality of the learnt Schrödinger bridges based on the average 2-Wasserstein distance to ground truth Schrödinger bridge samples over 18 time steps. Furthermore, SB-CFM is also significantly faster than DSB (Table S1).

**Application to single-cell interpolation.** As a specific application, we consider the task of single-cell trajectory interpolation. In this task we use leave-one-out validation over the timepoints. From times data at times  $[0, t - 1], [t + 1, T]$  we try to interpolate its distribution at time  $t$  following the setup of Schiebinger et al. (2019); Tong et al. (2020); Hugu et al. (2022a). Low error means we model individual cells

Table 4: Single-cell comparison over three datasets averaged over leaving out intermediate timepoints measuring EMD to left out distribution following Tong et al. (2020). \*Indicates values taken from aforementioned work.

Dataset	Cite	EB	Multi
T. Net (Tong et al., 2020)*	—	0.848 $\pm$ —	—
Reg. CNF (Finlay et al., 2020)*	—	0.825 $\pm$ —	—
DSB (De Bortoli et al., 2021)	0.953 $\pm$ 0.140	0.862 $\pm$ 0.023	1.079 $\pm$ 0.117
I-CFM	0.965 $\pm$ 0.111	0.872 $\pm$ 0.087	1.085 $\pm$ 0.099
SB-CFM	1.067 $\pm$ 0.107	1.221 $\pm$ 0.380	1.129 $\pm$ 0.363
OT-CFM	<b>0.882 <math>\pm</math> 0.058</b>	<b>0.790 <math>\pm</math> 0.068</b>	<b>0.937 <math>\pm</math> 0.054</b>

well, which is useful in a number of downstream tasks such as gene regulatory network inference (Aliee et al., 2021; Yeo et al., 2021). Following Hugu et al. (2022b), we repurpose the CITE-seq and Multiome datasets from a recent NeurIPS competition for this task (Burkhardt et al., 2022). We also include the Embryoid-body data from Moon et al. (2019); Tong et al. (2020). Table 4 shows the average earth mover’s distance (1-Wasserstein) on left-out timepoints for three datasets. On all three datasets OT-CFM outperforms other methods and baselines on average.

## 5.2. High-dimensional data: Lower-cost training and inference

We perform an experiment on unconditional CIFAR-10 generation from the Gaussian, replicating as closely as possible<sup>3</sup>

<sup>3</sup>There is insufficient information to reproduce the setup precisely. Specifically, Lipman et al. (2023) do not specify the  $\sigma_{\min}$

Table 5: **Left:** FID scores on CIFAR-10 after a small number of training epochs. OT-CFM trains faster with a lower FID score after the same number of training steps (100 steps of Euler integration used for FID evaluation). **Right:** FID scores after 1000 epochs training. For a small number of function evaluations, OT-CFM has significantly lower FID scores.

Alg.	Train Epochs		Function Evaluations				
	5	40	1	5	10	50	100
FM	134.702	57.461	362.421	63.832	29.636	11.661	<b>11.011</b>
I-CFM	127.693	48.202	360.787	63.562	27.884	<b>10.685</b>	11.859
OT-CFM	<b>111.394</b>	<b>47.936</b>	<b>238.981</b>	<b>38.567</b>	<b>20.855</b>	11.732	11.139

the setup of FM (Lipman et al., 2023), which uses the time-dependent U-Net architecture from (Nichol & Dhariwal, 2021) (see §E). We find that:

- For a short computation budget, OT-CFM outperforms FM and (non-OT) CFM (Table 5, left).
- After a long training time, all methods achieve similar performance at a high number of function evaluations, but OT-CFM performs significantly better with a small number of function evaluations (i.e., allows more efficient inference), indicating straighter, easily integrable flows (Table 5, right).
- FM and CFM are equivalently computationally efficient per iteration and OT-CFM comes with a low (<1%) computational overhead during training.

### 5.3. OT-CFM for unsupervised translation

We show how CFM can be used to learn a mapping between two unpaired datasets in high-dimensional space using the CelebA dataset (Liu et al., 2015; Sun et al., 2014), which consists of  $\sim 200k$  images of faces together with 40 binary attribute annotations. For each attribute, we wish to learn an invertible mapping between images with and without the attribute (e.g., ‘not smiling’  $\leftrightarrow$  ‘smiling’).

To reduce dimensionality, we first train a VAE on the images and encode them as 128-dimensional latent vectors. For each attribute, we learn a flow to map between the embeddings of images without the attribute and those of images with the attribute. After the CNF is learned, we push forward a held-out set of negative vectors by the CNF and compare them to the held-out positive vectors and vice versa. As a metric of divergence, we use maximum mean discrepancy (MMD) with a broad Gaussian kernel ( $\exp(-\|x - y\|^2 / (2 \cdot 128))$ ). The results aggregated over all attributes are shown in Table 6, showing that OT-CFM

used (we chose  $10^{-8}$ ) and number of samples for FID evaluation (we took 10k). Furthermore, there is a discrepancy in the learning rate schedule and the number of training epochs as described in Lipman et al. (2023). **We reran FM with controlled hyperparameter settings for a fair comparison.**

Table 6: MMD between target and transformed source samples of CelebA latent vectors. Mean and standard deviation over 40 attributes and both translation directions ( $- \leftrightarrow +$ ) for each attribute. ‘Identity’ refers to performing no translation and treating source samples as approximate samples from the target.

$\times 10^{-3}$	$\sigma = 0.1$	$\sigma = 0.3$	$\sigma = 1$
Identity	$9.17 \pm 5.68$	$9.17 \pm 5.68$	$9.17 \pm 5.68$
I-CFM	$4.85 \pm 5.09$	$3.44 \pm 2.03$	$1.59 \pm 0.83$
OT-CFM	$2.81 \pm 2.62$	$1.91 \pm 1.30$	$1.04 \pm 0.60$

discovers a better mapping than other methods. Although MMD is lower for larger  $\sigma$ , we found that the alignment is less natural when  $\sigma$  is large, and performance begins to degrade when  $\sigma > 1$ . Figure S10 shows several visualizations of the learned trajectories.

Finally, while here we work in a latent space, future work should consider learning flows directly in image space, where GAN-based approaches (Zhu et al., 2017) continue to dominate.

### 5.4. Additional experiments and extensions

We present numerous other extensions, applications, and evaluations of CFM in §D, notably:

**OT-CFM reduces variance in the regression target.** To accompany the theoretical results in §C.1, in §D.1 we empirically study the variance of the stochastic regression objective in (OT)-CFM. The results suggest an explanation for the faster convergence of models trained with OT-CFM.

**Energy-based CFM.** In §C.2 and §D.2 we show how CFM can be used to fit samplers for unnormalized density functions, where exact samples from  $q(x_0)$  or  $q(x_1)$  are not available.

**Extension to stochastic dynamics.** Tong et al. (2023) extend CFM to allow learning *stochastic* dynamics from unpaired source and target data.

## 6. Conclusion

We have introduced a novel class of simulation-free objectives for learning continuous-time flows with a general source distribution. Our approach to training continuous normalizing flows and conditional flow models does not require integration over time during training. We have shown that lifting the static optimal transport problem to the dynamic setting leads to simulation-free solutions to the dynamic OT and SB problems, while also allowing more efficient training and inference of flow models by lowering variance of the objective and straightening flows.



One limitation of CFM is that it requires closed-form conditional flows, which hinders its application to situations where we want to regularize the marginal vector field  $u_t(x)$  based on prior information (Tong et al., 2020). In addition, the minibatch approximation to OT can incur error in high dimensions; subsequent work can consider the use of neural-network approximations to OT maps (Korotin et al., 2023b;a) in conjunction with CFM. We expect future work to overcome these limitations and hope that ideas from conditional flow matching will improve high-dimensional generative models.

## Acknowledgments

We would like to thank Stefano Massaroli for productive conversations as well as thank Xinyu Yuan, Marco Jiraler-spong, Tara Akhound-Sadegh and Joey Bose for their helpful comments and feedback on the manuscript. The authors acknowledge funding from CIFAR, Genentech, Samsung, and IBM. In addition, K.F. acknowledges funding from NSERC (RGPIN-2019-06512) and G.W. acknowledges funding from NSERC Discovery grant 03267 and NIH grant R01GM135929.

## References

- Albergo, M. S. and Vanden-Eijnden, E. Building normalizing flows with stochastic interpolants. *International Conference on Learning Representations (ICLR)*, 2023.
- Albergo, M. S., Boffi, N. M., and Vanden-Eijnden, E. Stochastic interpolants: A unifying framework for flows and diffusions. *arXiv preprint 2303.08797*, 2023.
- Alicée, H., Theis, F. J., and Kilbertus, N. Beyond predictions in neural ODEs: Identification and interventions. *arXiv preprint 2106.12430*, 2021.
- Austin, J., Johnson, D. D., Ho, J., Tarlow, D., and van den Berg, R. Structured denoising diffusion models in discrete state-spaces. *Neural Information Processing Systems (NeurIPS)*, 2021.
- Bao, F., Li, C., Zhu, J., and Zhang, B. Analytic-dpm: An analytic estimate of the optimal reverse variance in diffusion probabilistic models. *International Conference on Learning Representations (ICLR)*, 2022.
- Ben-Hamu, H., Cohen, S., Bose, J., Amos, B., Grover, A., Nickel, M., Chen, R. T. Q., and Lipman, Y. Matching normalizing flows and probability paths on manifolds. *International Conference on Machine Learning (ICML)*, 2022.
- Brenier, Y. Polar factorization and monotone rearrangement of vector-valued functions. *Communications on Pure and Applied Mathematics*, 44(4):375–417, 1991. doi: 10.1002/cpa.3160440402.
- Bunne, C., Meng-Papaxanthos, L., Krause, A., and Cuturi, M. Proximal optimal transport modeling of population dynamics. *Artificial Intelligence and Statistics (AISTATS)*, 2022.
- Burkhardt, D., Bloom, J., Cannoodt, R., Luecken, M. D., Krishnaswamy, S., Lance, C., Pisco, A. O., and Theis, F. J. Multimodal single-cell integration across time, individuals, and batches. In *NeurIPS Competitions*, 2022.
- Chen, R. T. Q., Rubanova, Y., Bettencourt, J., and Duvenaud, D. Neural ordinary differential equations. *Neural Information Processing Systems (NeurIPS)*, 2018.
- Corso, G., Stärk, H., Jing, B., Barzilay, R., and Jaakkola, T. Diffdock: Diffusion steps, twists, and turns for molecular docking. *arXiv preprint 2210.01776*, 2022.
- Cuturi, M. Sinkhorn distances: Lightspeed computation of optimal transport. *Neural Information Processing Systems (NIPS)*, 2013.
- Damodaran, B. B., Kellenberger, B., Flamary, R., Tuia, D., and Courty, N. DeepJDOT: Deep joint distribution optimal transport for unsupervised domain adaptation. *European Conference on Computer Vision (ECCV)*, 2018.
- De Bortoli, V., Thornton, J., Heng, J., and Doucet, A. Diffusion Schrödinger bridge with applications to score-based generative modeling. *Neural Information Processing Systems (NeurIPS)*, 2021.
- Dhariwal, P. and Nichol, A. Diffusion models beat GANs on image synthesis. *Neural Information Processing Systems (NeurIPS)*, 2021.
- Fatras, K., Zine, Y., Flamary, R., Gribonval, R., and Courty, N. Learning with minibatch Wasserstein: Asymptotic and gradient properties. *Artificial Intelligence and Statistics (AISTATS)*, 2020.
- Fatras, K., Séjourné, T., Courty, N., and Flamary, R. Unbalanced minibatch optimal transport; applications to domain adaptation. *International Conference on Machine Learning (ICML)*, 2021a.
- Fatras, K., Zine, Y., Majewski, S., Flamary, R., Gribonval, R., and Courty, N. Minibatch optimal transport distances; analysis and applications. *arXiv preprint 2101.01792*, 2021b.
- Finlay, C., Jacobsen, J.-H., Nurbekyan, L., and Oberman, A. M. How to train your neural ode: The world of jacobian and kinetic regularization. *International Conference on Machine Learning (ICML)*, 2020.
- Flamary, R., Courty, N., Gramfort, A., Alaya, M. Z., Boisbunon, A., Chambon, S., Chapel, L., Corenflos, A., Fatras,

- K., Fournier, N., Gautheron, L., Gayraud, N. T. H., Janati, H., Rakotomamonjy, A., Redko, I., Rolet, A., Schutz, A., Seguy, V., Sutherland, D. J., Tavenard, R., Tong, A., and Vayer, T. POT: Python Optimal Transport. *Journal of Machine Learning Research (JMLR)*, 22, 2021.
- Genevay, A., Peyre, G., and Cuturi, M. Learning generative models with Sinkhorn divergences. *Artificial Intelligence and Statistics (AISTATS)*, 2018.
- Goodfellow, I. J., Pouget-Abadie, J., Mirza, M., Xu, B., Warde-Farley, D., Ozair, S., Courville, A., and Bengio, Y. Generative adversarial nets. *Neural Information Processing Systems (NIPS)*, 2014.
- Grathwohl, W., Chen, R. T. Q., Bettencourt, J., Sutskever, I., and Duvenaud, D. Ffjord: Free-form continuous dynamics for scalable reversible generative models. *International Conference on Learning Representations (ICLR)*, 2019.
- Ho, J., Jain, A., and Abbeel, P. Denoising diffusion probabilistic models. *Neural Information Processing Systems (NeurIPS)*, 2020.
- Hoffman, M. D. and Gelman, A. The No-U-turn sampler: adaptively setting path lengths in Hamiltonian Monte Carlo. *Journal of Machine Learning Research (JMLR)*, 15:1593–1623, 2011.
- Huguet, G., Magruder, D. S., Tong, A., Fasina, O., Kuchroo, M., Wolf, G., and Krishnaswamy, S. Manifold interpolating optimal-transport flows for trajectory inference. *Neural Information Processing Systems (NeurIPS)*, 2022a.
- Huguet, G., Tong, A., Zapatero, M. R., Wolf, G., and Krishnaswamy, S. Geodesic Sinkhorn: Optimal transport for high-dimensional datasets. *arXiv preprint 2211.00805*, 2022b.
- Kingma, D. P. and Welling, M. Auto-encoding variational bayes. *International Conference on Learning Representations (ICLR)*, 2014.
- Klambauer, G., Unterthiner, T., Mayr, A., and Hochreiter, S. Self-normalizing neural networks. *Neural Information Processing Systems (NIPS)*, 2017.
- Korotin, A., Li, L., Genevay, A., Solomon, J. M., Filippov, A., and Burnaev, E. Do neural optimal transport solvers work? a continuous wasserstein-2 benchmark. *Neural Information Processing Systems (NeurIPS)*, 2021.
- Korotin, A., Selikhanovych, D., and Burnaev, E. Kernel neural optimal transport. *International Conference on Learning Representations (ICLR)*, 2023a.
- Korotin, A., Selikhanovych, D., and Burnaev, E. Neural optimal transport. *International Conference on Learning Representations (ICLR)*, 2023b.
- Lehmann, E. L. and Casella, G. *Theory of point estimation*. Springer Science & Business Media, 2006.
- Léonard, C. Some properties of path measures. In Donati-Martin, C., Lejay, A., and Rouault, A. (eds.), *Séminaire de Probabilités XLVI*, pp. 207–230. Springer, 2014a.
- Léonard, C. A survey of the Schrödinger problem and some of its connections with optimal transport. *Discrete and Continuous Dynamical Systems*, 34(4):1533–1574, 2014b.
- Leygonie, J., She, J., Almahairi, A., Rajeswar, S., and Courville, A. Adversarial computation of optimal transport maps. *arXiv preprint 1906.09691*, 2019.
- Li, X., Wong, T.-K. L., Chen, R. T. Q., and Duvenaud, D. Scalable gradients for stochastic differential equations. *Artificial Intelligence and Statistics (AISTATS)*, 2020.
- Lipman, Y., Chen, R. T. Q., Ben-Hamu, H., Nickel, M., and Le, M. Flow matching for generative modeling. *International Conference on Learning Representations (ICLR)*, 2023.
- Liu, Q. Rectified flow: A marginal preserving approach to optimal transport. *arXiv preprint 2209.14577*, 2022.
- Liu, X., Gong, C., and Liu, Q. Flow straight and fast: Learning to generate and transfer data with rectified flow. *International Conference on Learning Representations (ICLR)*, 2023.
- Liu, Z., Luo, P., Wang, X., and Tang, X. Deep learning face attributes in the wild. *International Conference on Computer Vision (ICCV)*, 2015.
- Loshchilov, I. and Hutter, F. Decoupled weight decay regularization. *International Conference on Learning Representations (ICLR)*, 2019.
- Lu, C., Zhou, Y., Bao, F., Chen, J., Li, C., and Zhu, J. Dpm-solver: A fast ode solver for diffusion probabilistic model sampling in around 10 steps. *Neural Information Processing Systems (NeurIPS)*, 2022.
- Makkuva, A. V., Taghvaei, A., Oh, S., and Lee, J. D. Optimal transport mapping via input convex neural networks. *International Conference on Machine Learning (ICML)*, 2020.
- Mallasto, A., Gerolin, A., and Ha Quang, M. Entropy-regularized 2-Wasserstein distance between Gaussian measures. *Information Geometry*, 5, 07 2022.

- Moon, K. R., van Dijk, D., Wang, Z., Gigante, S., Burkhardt, D. B., Chen, W. S., Yim, K., van den Elzen, A., Hirn, M. J., Coifman, R. R., Ivanova, N. B., Wolf, G., and Krishnaswamy, S. Visualizing structure and transitions in high-dimensional biological data. *Nature Biotechnology*, 37(12):1482–1492, 2019.
- Neklyudov, K., Severo, D., and Makhzani, A. Action matching: A variational method for learning stochastic dynamics from samples. *arXiv preprint 2210.06662*, 2022.
- Nichol, A. and Dhariwal, P. Improved denoising diffusion probabilistic models. *International Conference on Machine Learning (ICML)*, 2021.
- Onken, D., Fung, S. W., Li, X., and Ruthotto, L. OT-Flow: Fast and accurate continuous normalizing flows via optimal transport. *Association for the Advancement of Artificial Intelligence (AAAI)*, 2021.
- Paszke, A., Gross, S., Massa, F., Lerer, A., Bradbury, J., Chanan, G., Killeen, T., Lin, Z., Gimelshein, N., Antiga, L., Desmaison, A., Kopf, A., Yang, E., DeVito, Z., Raison, M., Tejani, A., Chilamkurthy, S., Steiner, B., Fang, L., Bai, J., and Chintala, S. PyTorch: An imperative style, high-performance deep learning library. *Neural Information Processing Systems (NeurIPS)*, 2019.
- Pooladian, A.-A., Ben-Hamu, H., Domingo-Enrich, C., Amos, B., Lipman, Y., and Chen, R. T. Multisample flow matching: Straightening flows with minibatch couplings. *International Conference on Learning Representations (ICLR)*, 2023.
- Rezende, D. J. and Mohamed, S. Variational inference with normalizing flows. *International Conference on Machine Learning (ICML)*, 2015.
- Rozen, N., Grover, A., Nickel, M., and Lipman, Y. Moser flow: Divergence-based generative modeling on manifolds. *Neural Information Processing Systems (NeurIPS)*, 2021.
- Salimans, T. and Ho, J. Progressive distillation for fast sampling of diffusion models. *International Conference on Learning Representations (ICLR)*, 2022.
- Schiebinger, G., Shu, J., Tabaka, M., Cleary, B., Subramanian, V., Solomon, A., Gould, J., Liu, S., Lin, S., Berube, P., Lee, L., Chen, J., Brumbaugh, J., Rigollet, P., Hochedlinger, K., Jaenisch, R., Regev, A., and Lander, E. S. Optimal-transport analysis of single-cell gene expression identifies developmental trajectories in reprogramming. *Cell*, 176(4):928–943.e22, 2019.
- Schrödinger, E. Sur la théorie relativiste de l’électron et l’interprétation de la mécanique quantique. *Annales de l’Institut Henri Poincaré*, 2(4):269–310, 1932.
- Shi, Y., De Bortoli, V., Deligiannidis, G., and Doucet, A. Conditional simulation using diffusion Schrödinger bridges. *Uncertainty in Artificial Intelligence (UAI)*, 2022.
- Sohl-Dickstein, J., Weiss, E. A., Maheswaranathan, N., and Ganguli, S. Deep unsupervised learning using nonequilibrium thermodynamics. *International Conference on Machine Learning (ICML)*, 2015.
- Song, J., Meng, C., and Ermon, S. Denoising diffusion implicit models. *International Conference on Learning Representations (ICLR)*, 2021a.
- Song, Y. and Ermon, S. Generative modeling by estimating gradients of the data distribution. *Neural Information Processing Systems (NeurIPS)*, 2019.
- Song, Y. and Ermon, S. Improved techniques for training score-based generative models. *Neural Information Processing Systems (NeurIPS)*, 2020.
- Song, Y., Sohl-Dickstein, J., Kingma, D. P., Kumar, A., Ermon, S., and Poole, B. Score-based generative modeling through stochastic differential equations. *International Conference on Learning Representations (ICLR)*, 2021b.
- Sun, Y., Wang, X., and Tang, X. Deep learning face representation by joint identification-verification. *Neural Information Processing Systems (NIPS)*, 2014.
- Tong, A., Huang, J., Wolf, G., van Dijk, D., and Krishnaswamy, S. TrajectoryNet: A dynamic optimal transport network for modeling cellular dynamics. *International Conference on Machine Learning (ICML)*, 2020.
- Tong, A., Malkin, N., Fatras, K., Atanackovic, L., Zhang, Y., Huguët, G., Wolf, G., and Bengio, Y. Simulation-free schrödinger bridges via score and flow matching. 2023.
- Vargas, F., Thodoroff, P., Lawrence, N. D., and Lamacraft, A. Solving Schrödinger bridges via maximum likelihood. *Entropy*, 23(9), 2021.
- Wang, G., Jiao, Y., Xu, Q., Wang, Y., and Yang, C. Deep generative learning via Schrödinger bridge. *International Conference on Machine Learning (ICML)*, 2021.
- Watson, D., Chan, W., Ho, J., and Norouzi, M. Learning fast samplers for diffusion models by differentiating through sample quality. *International Conference on Learning Representations (ICLR)*, 2022a.
- Watson, J. L., Juergens, D., Bennett, N. R., Trippe, B. L., Yim, J., Eisenach, H. E., Ahern, W., Borst, A. J., Ragoth, R. J., Milles, L. F., Wicky, B. I. M., Hanikel, N., Pellock, S. J., Courbet, A., Sheffler, W., Wang, J., Venkatesh, P., Sappington, I., Torres, S. V., Lauko, A., De Bortoli, V.,

Mathieu, E., Barzilay, R., Jaakkola, T. S., DiMaio, F., Baek, M., and Baker, D. Broadly applicable and accurate protein design by integrating structure prediction networks and diffusion generative models. *bioRxiv preprint 2022.12.09.519842*, 2022b.

Yeo, G. H. T., Saksena, S. D., and Gifford, D. K. Generative modeling of single-cell time series with PRESCIENT enables prediction of cell trajectories with interventions. *Nature Communications*, 12(1):3222, 2021.

Zhang, Q. and Chen, Y. Path integral sampler: a stochastic control approach for sampling. *International Conference on Learning Representations (ICLR)*, 2022.

Zhu, J.-Y., Park, T., Isola, P., and Efros, A. A. Unpaired image-to-image translation using cycle-consistent adversarial networks. *International Conference on Computer Vision (ICCV)*, 2017.



## Appendix

### A. Proofs of theorems

**Theorem 3.1.** *The marginal vector field (9) generates the probability path (8) from initial conditions  $p_0(x)$ .*

*Proof of Theorem 3.1.* To verify this, we first check that  $p_t$  and  $u_t$  satisfy the continuity equation.

We start with the derivative w.r.t. time of eq. 8

$$\frac{d}{dt}p_t(x) = \frac{d}{dt} \int p_t(x|z)q(z)dz$$

by Leibniz Rule,

$$= \int \frac{d}{dt} (p_t(x|z)q(z)) dz$$

since  $u_t(\cdot|z)$  generates  $p_t(\cdot|z)$ ,

$$= - \int \operatorname{div} (u_t(x|z)p_t(x|z)q(z)) dz$$

exchanging the derivative and integral,

$$= -\operatorname{div} \left( \int u_t(x|z)p_t(x|z)q(z)dz \right)$$

Using eq. 9,

$$= -\operatorname{div} (u_t(x)p_t(x))$$

satisfying the continuity equation  $\frac{d}{dt}p_t(x) + \operatorname{div} (u_t(x)p_t(x)) = 0$ . □

**Theorem 3.2.** *If  $p_t(x) > 0$  for all  $x \in \mathbb{R}^d$  and  $t \in [0, 1]$ , then, up to a constant independent of  $\theta$ ,  $\mathcal{L}_{\text{CFM}}$  and  $\mathcal{L}_{\text{FM}}$  are equal, and hence*

$$\nabla_{\theta} \mathcal{L}_{\text{FM}}(\theta) = \nabla_{\theta} \mathcal{L}_{\text{CFM}}(\theta). \quad (11)$$

*Proof of Theorem 3.2.* For this proof we need eq. 8, eq. 9 and the existence and exchange of many integrals. As in [Lipman et al. \(2023\)](#) we assume that  $q, p_t(x|z)$  are decreasing to zero at sufficient speed as  $\|x\| \rightarrow \infty$  and that  $u_t, v_t, \nabla_{\theta} v_t$  are bounded.

$$\begin{aligned} \nabla_{\theta} \mathbb{E}_{p_t(x)} \|v_{\theta}(t, x) - u_t(x)\|^2 &= \nabla_{\theta} \mathbb{E}_{p_t(x)} (\|v_{\theta}(t, x)\|^2 - 2 \langle v_{\theta}(t, x), u_t(x) \rangle + \|u_t(x)\|^2) \\ &= \nabla_{\theta} \mathbb{E}_{p_t(x)} (\|v_{\theta}(t, x)\|^2 - 2 \langle v_{\theta}(t, x), u_t(x) \rangle) \\ \nabla_{\theta} \mathbb{E}_{q(z), p_t(x|z)} \|v_{\theta}(t, x) - u_t(x|z)\|^2 &= \\ \nabla_{\theta} \mathbb{E}_{q(z), p_t(x|z)} (\|v_{\theta}(t, x)\|^2 - 2 \langle v_{\theta}(t, x), u_t(x|z) \rangle + \|u_t(x|z)\|^2) &= \\ = \mathbb{E}_{q(z), p_t(x|z)} \nabla_{\theta} (\|v_{\theta}(t, x)\|^2 - 2 \langle v_{\theta}(t, x), u_t(x|z) \rangle) & \end{aligned}$$

By bilinearity of the 2-norm and since  $u_t$  is independent of  $\theta$ . Next,

$$\begin{aligned} \mathbb{E}_{p_t(x)} \|v_{\theta}(t, x)\|^2 &= \int \|v_{\theta}(t, x)\|^2 p_t(x) dx \\ &= \iint \|v_{\theta}(t, x)\|^2 p_t(x|z) q(z) dz dx \\ &= \mathbb{E}_{q(z), p_t(x|z)} \|v_{\theta}(t, x)\|^2 \end{aligned}$$

Finally,

$$\begin{aligned}
 \mathbb{E}_{p_t(x)} \langle v_\theta(t, x), u_t(x) \rangle &= \int \left\langle v_\theta(t, x), \frac{\int u_t(x|z) p_t(x|z) q(z) dz}{p_t(x)} \right\rangle p_t(x) dx \\
 &= \int \left\langle v_\theta(t, x), \int u_t(x|z) p_t(x|z) q(z) dz \right\rangle dx \\
 &= \iint \langle v_\theta(t, x), u_t(x|z) \rangle p_t(x|z) q(z) dz dx \\
 &= \mathbb{E}_{q(z), p_t(x|z)} \langle v_\theta(t, x), u_t(x|z) \rangle
 \end{aligned}$$

Where we first substitute eq. 9 then change the order of integration for the final equality. Since at all times  $t$  the gradients of  $\mathcal{L}_{\text{FM}}$  and  $\mathcal{L}_{\text{CFM}}$  are equal,  $\nabla_\theta \mathcal{L}_{\text{FM}}(\theta) = \nabla_\theta \mathcal{L}_{\text{CFM}}(\theta)$   $\square$

**Proposition 3.3.** *The marginal  $p_t$  corresponding to  $q(z) = q(x_0)q(x_1)$  and the  $p_t(x|z), u_t(x|z)$  in eqs. 14 and 15 has boundary conditions  $p_1 = q_1 * \mathcal{N}(x | 0, \sigma^2)$  and  $p_0 = q_0 * \mathcal{N}(x | 0, \sigma^2)$ , where  $*$  denotes the convolution operator.*

*Proof of Proposition 3.3.* We start with eq. 8 to show the result of the lemma. We note that  $q(z) = q((x_0, x_1)) = q(x_0)q(x_1)$

$$\begin{aligned}
 p_t(x) &= \int p_t(x|z) q(z) dz \\
 &= \int \mathcal{N}(x | tx_1 + (1-t)x_0, \sigma^2) q((x_0, x_1)) d(x_0, x_1) \\
 &= \iint \mathcal{N}(x | tx_1 + (1-t)x_0, \sigma^2) q(x_0) q(x_1) dx_0 dx_1
 \end{aligned}$$

evaluated at  $i = 0, 1$  respectively. Therefore, at  $t = 0$ ,

$$\begin{aligned}
 p_0(x) &= \iint \mathcal{N}(x | x_0, \sigma^2) q(x_0) q(x_1) dx_0 dx_1 \\
 &= \int \mathcal{N}(x | x_0, \sigma^2) q(x_0) dx_0 \\
 &= q(x_0) * \mathcal{N}(x | 0, \sigma^2).
 \end{aligned}$$

This is also true for  $t = 1$ .  $\square$

**Proposition 3.4.** *The results of Prop. 3.3 also hold for  $q(z)$  in eq. 17. Furthermore, assume  $q_0$  admits a density with respect to the Lebesgue measure. Then as  $\sigma^2 \rightarrow 0$  the marginal path  $p_t$  and field  $u_t$  minimize eq. 7, i.e.,  $u_t$  solves the dynamic optimal transport problem between  $q_0$  and  $q_1$ .*

*Proof of Proposition 3.4.* Given  $\pi$  a 2-Wasserstein optimal transport map with marginals  $q_0$  and  $q_1$ , we have  $\int \pi(x_0, x_1) dx_1 = q_0$  at  $t = 0$  and  $\int \pi(x_0, x_1) dx_0 = q_1$  at  $t = 1$ . Then,

$$\begin{aligned}
 p_t(x) &= \int \mathcal{N}(x | tx_1 + (1-t)x_0, \sigma^2) \pi(x_0, x_1) d(x_0, x_1) \\
 &= \iint \mathcal{N}(x | tx_1 + (1-t)x_0, \sigma^2) \pi(x_0, x_1) dx_0 dx_1
 \end{aligned}$$

Therefore, at  $t = 0$ ,

$$\begin{aligned}
 p_0(x) &= \iint \mathcal{N}(x | x_0, \sigma^2) \pi(x_0, x_1) dx_0 dx_1 \\
 &= \int \mathcal{N}(x | x_0, \sigma^2) \left( \int \pi(x_0, x_1) dx_1 \right) dx_0 \\
 &= \int \mathcal{N}(x | x_0, \sigma^2) q(x_0) dx_0 \\
 &= q(x_0) * \mathcal{N}(x | 0, \sigma^2).
 \end{aligned}$$

This is also true for  $t = 1$ .

Since we assumed  $q_0$  admits a density with respect to the Lebesgue measure, then the conditions for Brenier's theorem (Brenier, 1991) are satisfied. By Brenier's theorem we know that the optimal joint  $\pi$  is unique and is supported on the graph  $(x, T(x))$  of a Monge map  $T : \mathbb{R}^d \rightarrow \mathbb{R}^d$ , and  $p_t(x)$  is equal to McCann's interpolation

$$p_t = ((1-t)\text{Id} + tT)_{\#} p_0 \quad (22)$$

In addition, we know that  $T(x)$  can be parameterized as the gradient of a convex function, i.e.  $T(x) = \nabla\psi(x)$ . It can be shown that the conditional probability paths do not cross, i.e.  $p_t(x|x_0, T(x_0)) = p_t(x)$  for all  $(t, x)$ .<sup>4</sup> We also know that along the conditional paths between  $x_0$  and  $T(x_0)$ , the optimal vector field is  $T(x) - x$  by eq. 22.

It remains to be shown that our learned  $v_\theta(t, x)$  converges to  $T(x_0) - x_0$  along the conditional probability paths  $p_t(x|x_0, T(x_0))$  as  $\sigma \rightarrow 0$ .

We recall from eq. 9 that

$$u_t(x) = \mathbb{E}_{q(x_0, T(x_0))} \frac{u_t(x|x_0, T(x_0)) p_t(x|x_0, T(x_0))}{p_t(x)} \quad (23)$$

Since the conditional probability paths do not cross for  $q(z)$  in eq. 17,  $u_t(x)$  approaches  $u_t(x|x_0, T(x_0))$  as  $\sigma \rightarrow 0$  along the conditional probability paths  $p_t(x|x_0, T(x_0))$ , i.e.,  $u_t$  solves the dynamic optimal transport problem between  $q_0$  and  $q_1$ .  $\square$

**Proposition 3.5.** *The marginal vector field  $u_t(x)$  defined by eq. 19 and eq. 21 generates the same marginal probability path as the solution  $\pi^*$  to the SB problem in eq. 18.*

*Proof of Proposition 3.5.* Using Theorem 2.4 of Léonard (2014a), De Bortoli et al. (2021) showed that the initial and terminal marginals of  $\pi^*$  are the solution to the static OT problem

$$\pi^*(x_0, x_1) = \arg \min \text{KL}(\pi^*(x_0, x_1) \| p_{\text{ref}}(x_0, x_1)),$$

while the conditional path distributions  $\pi^*(-|x_0, x_1)$  minimize  $\mathbb{E}_{x_0, x_1 \sim \pi^*(x_0, x_1)} \text{KL}(\pi^*(-|x_0, x_1) \| p_{\text{ref}}(-|x_0, x_1))$ .

The optimization problem for  $\pi^*(x_0, x_1)$  is equivalent to the entropy-regularized optimal transport problem with optimum  $\pi_{2\sigma^2}$ , as observed by De Bortoli et al. (2021). (The key observation is that  $\log p_{\text{ref}}(x_0, x_1) = \frac{c(x_0, x_1)^\alpha}{2\sigma^2} + \text{const.}$ , where  $c(x, y) = \|x - y\|$  and  $\alpha = 2$ .) The divergences between conditional path distributions are optimized by Brownian bridges with diffusion scale  $\sigma$  pinned at  $x_0$  and  $x_1$ , which are well-known to have marginal probability path  $p_t$  in eq. 20, and, by eq. 5, are generated by the vector fields  $u_t$  in eq. 21.  $\square$

## B. Additional theoretical results

**Proposition B.1.** *For any  $\sigma \in \mathbb{R}_+$  conditional flow matching with conditional probability paths given by (16) has an equivalent marginal probability flow  $p_t(x)$  to Lipman et al. (2023) flow matching.*

*Proof.* To prove the proposition, we use the fact that the Gaussian family can be generated by location-scale transformations (see e.g. Lehmann & Casella, 2006), i.e. we can express any Gaussian  $Z_0 \sim \mathcal{N}(\mu_0, \sigma_0^2)$  as  $Z_0 = \mu_0 + \sigma_0 Z$  where  $Z \sim \mathcal{N}(0, 1)$ . Recall that the density  $p_t(x)$  has the form  $p_t(x) = \int p_t(x|z) q(z) dz$ , to show the equivalence between the flow from FM and source conditional flow matching, we have to show that  $p_t(x|x_1)$  is the same for both methods, that is we show that CFM with variance  $(\sigma t)^2 + 2\sigma t(1-t)$  is equivalent to FM with variance  $(t\sigma - t + 1)^2$  (Def. 12). Since  $p_t(x|x_0, x_1)$  is  $\mathcal{N}(tx_1 + (1-t)x_0, \sigma t(\sigma t - 2t + 2))$  we can write the random variable  $X|X_0, X_1$  as

$$X|X_0, X_1 = tx_1 + (1-t)x_0 + (\sigma t(\sigma t - 2t + 2))^{1/2} Z,$$

where  $Z \sim \mathcal{N}(0, 1)$ . Without conditioning on  $X_0$ , we have

$$X|X_1 = tx_1 + (1-t)X_0 + (\sigma t(\sigma t - 2t + 2))^{1/2} Z.$$

<sup>4</sup>Proof: If the paths from distinct  $x_0$  and  $x'_0$  cross, then  $(1-t)x_0 + t\nabla\psi(x_0) = (1-t)x'_0 + t\nabla\psi(x'_0)$  for some  $t \in (0, 1)$ . Taking dot product with  $x_0 - x'_0$ ,  $(t-1)\|x_0 - x'_0\|^2 = t\langle \nabla\psi(x_0) - \nabla\psi(x'_0), x_0 - x'_0 \rangle$ . However, we have  $(t-1)\|x_0 - x'_0\|^2 < 0$  and  $t\langle \nabla\psi(x_0) - \nabla\psi(x'_0), x_0 - x'_0 \rangle \geq 0$  by convexity of  $\psi$ , contradiction.

By assumption  $X_0 \sim \mathcal{N}(0, 1)$ , thus  $X|X_1$  is Gaussian, since a linear transformation of Gaussian distributions is also Gaussian. To define its distribution, we only have to define its expectation and variance. By linearity of expectation, we find  $\mathbb{E}(X|X_1) = tx_1$ , and by independence of  $X_0$  and  $Z$  we have

$$\begin{aligned}\text{Var}(X|X_1) &= (1-t)^2\text{Var}(X_0) + (\sigma t(\sigma t - 2t + 2))\text{Var}(Z) \\ &= (1-t)^2 + (\sigma t(\sigma t - 2t + 2)) = (t\sigma - t + 1)^2,\end{aligned}$$

hence the flow from source conditional flow matching is the same as FM.  $\square$

**Proposition B.2.** *If  $\pi$  is a Monge map, the objective variance of OT-CFM goes to zero as  $\sigma \rightarrow 0$ , i.e.,*

$$\mathbb{E}_{q(z)} \|u_t(x|z) - u_t(x)\|^2 \rightarrow 0 \text{ as } \sigma \rightarrow 0$$

for  $u_t(x|z)$  in eq. 15.

*Proof.* This follows from a basic fact about the transport plan  $\pi$ . Specifically, that as  $\sigma \rightarrow 0$ ,  $D_{\text{KL}}(p_t(x|z^i) \| p_t(x|z^j)) \rightarrow \infty$  for an  $t, x$  for two distinct  $z^i, z^j$ . This means that  $p_t(x|z) = p_t(x)$  for any  $t, x, z$  therefore

$$\begin{aligned}u_t(x) &= \mathbb{E}_{q(z)} u_t(x|z) p_t(x|z) / p_t(x) \\ &= u_t(x|z)\end{aligned}$$

$\square$

**Proposition B.3.** *The conditional vector field  $u_t(x|\bar{z})$  defined by 25 converges to marginal vector field  $u_t(x)$  defined by 9 as  $m$  goes to population size, i.e.,*

$$\|u_t(x|\bar{z}) - u_t(x)\|^2 \rightarrow 0$$

as  $m \rightarrow |\mathcal{X}|$ .

*Proof.* As  $|z| \rightarrow |\mathcal{X}|$ , by definition,

$$\begin{aligned}u_t(x|\bar{z}) &= \frac{\sum_i^m u_t(x|z^i) p_t(x|z^i) q(z^i)}{\sum_i^m p_t(x|z^i) q(z^i)} \\ &= \frac{\sum_{z \in \mathcal{X}} u_t(x|z) p_t(x|z) q(z)}{\sum_{z \in \mathcal{X}} p_t(x|z) q(z)} \\ &= \mathbb{E}_{q(z)} \frac{u_t(x|z) p_t(x|z)}{p_t(x)} \\ &= u_t(x)\end{aligned}$$

$\square$

## C. Algorithm extensions

In Algorithm 1 we presented the general algorithm for conditional flow matching given  $q(z), p_t(x|z), u_t(x|z)$ . In Table 1 we presented a number of settings of these leading to interesting probability paths. In practice, we may wish to compute  $q(z)$  on the fly. Therefore in Algorithms 2, 3, and 4, we give algorithms for the simplified conditional flow matching, and minibatch versions of OT conditional flow matching and Schrödinger bridge conditional flow matching. In general these consist of first sampling a batch of data from both the source and the target empirical distributions, then resampling pairs of data either randomly (CFM) or according to some OT plan, (OT-CFM and SB-CFM).

### C.1. Variance reduction by averaging across batches

An interesting consequence of introducing optimal transport to conditional flow matching is that it greatly reduces variance of the regression target. Informally, as  $\sigma \rightarrow 0$ ,  $\mathbb{E}_{x,t,z} \|u_t(x|z) - u_t(x)\|^2 \rightarrow 0$  for OT-CFM and SB-CFM, which is not true of previous probability paths in Table 1 (See Proposition B.2 for a precise statement). As flow models get larger, more powerful, and more costly, reducing objective variance, and thereby faster training may lead to significant cost savings (Watson et al., 2022b). To this end we also explore reducing the variance of the objective by averaging over a batch. This is not feasible in



score matching where the flow conditioned on multiple datapoints is complex. Our CFM framework naturally extends from a pair of datapoints to a batch of pairs. Instead of conditioning on a single pair of datapoints we can condition on a batch of pairs. As the batch increases in size, we trade higher cost in computing the target for lower variance in the target as the batch size increases, the variance in the target goes to zero (see [Proposition B.3](#) for a precise statement).

As formalized in [Proposition B.3](#), we can reduce variance in the target by averaging over multiple datapoints. Specifically, in this case we let  $\bar{z} := \{z^i := (x_0^i, x_1^i)\}_{i=1}^m$ , where  $z^i$  are i.i.d. from  $q(z)$  and

$$p_t(x|\bar{z}) = \frac{\sum_i^m p_t(x|z^i)q(z^i)}{\sum_i^m q(z^i)} \quad (24)$$

$$u_t(x|\bar{z}) = \frac{\sum_i^m u_t(x|z^i)p_t(x|z^i)q(z^i)}{p_t(x|\bar{z})} \quad (25)$$

It takes roughly  $m$  times as long to compute the conditional target  $u_t(x|\bar{z})$  but reduces the variance. As the evaluation and backpropagation through  $v_\theta$  gets more difficult this tradeoff can be beneficial.

## C.2. Modeling energy functions

If we have access to an energy function two (unnormalized) energy functions  $\mathcal{R}_{\{0,1\}} : \mathbb{R}^d \rightarrow \mathbb{R}^+$  at the endpoints instead of i.i.d. samples  $\mathbf{X}_t \sim q_t(x_t)$ , then the objective must be slightly modified. We formulate the Energy Conditional Flow Matching Objective as

$$\mathcal{L}_{\text{ECFM}} = \mathbb{E}_{t, \hat{q}_0(x_0), \hat{q}_1(x_1), p_t(x|x_0, x_1)} \left[ \frac{R_0(x_0)R_1(x_1)}{\hat{q}_0(x_0)\hat{q}_1(x_1)} \|v_\theta(t, x) - u_t(x|x_0, x_1)\|_2^2 \right] \quad (26)$$

We can use this object to train a flow which matches the energies without access to samples. This is formalized in the following theorem.

**Proposition C.1.** *Assuming that  $\hat{q}_{\{0,1\}}(x), p_t(x) > 0$  for all  $x \in \mathcal{X}$  and  $t \in [0, 1]$  then the gradients of  $\mathcal{L}_{\text{FM}}$  and  $\mathcal{L}_{\text{ECFM}}$  with respect to  $\theta$  are equal up to some multiplicative constant  $c$ .*

$$\nabla_\theta \mathcal{L}_{\text{FM}}(\theta) = c \nabla_\theta \mathcal{L}_{\text{ECFM}}(\theta) \quad (27)$$

*Proof.* Let  $z_0 = \int_{\mathcal{X}} R_0(x)dx$ , and  $z_1 = \int_{\mathcal{X}} R_1(x)dx$  then  $q(x_0) = \mathcal{R}_0(x_0)/z_0$ , similarly  $q(x_1) = \mathcal{R}_1(x_1)/z_1$ , then

$$\mathcal{L}_{\text{ECFM}}(\theta) = \mathbb{E}_{t, \hat{q}_0(x_0), \hat{q}_1(x_1), p_t(x|x_0, x_1)} \left[ \frac{\mathcal{R}_0(x_0)\mathcal{R}_1(x_1)}{\hat{q}_0(x_0)\hat{q}_1(x_1)} \|v_\theta(t, x) - u_t(x|x_0, x_1)\|_2^2 \right] \quad (28)$$

$$= z_0 z_1 \mathbb{E}_{t, \hat{q}_0(x_0), \hat{q}_1(x_1), p_t(x|x_0, x_1)} \left[ \frac{q_0(x_0)q_1(x_1)}{\hat{q}_0(x_0)\hat{q}_1(x_1)} \|v_\theta(t, x) - u_t(x|x_0, x_1)\|_2^2 \right] \quad (29)$$

$$= z_0 z_1 \int_{t, x_0, x_1, x} \left[ q_0(x_0)q_1(x_1) \|v_\theta(t, x) - u_t(x|x_0, x_1)\|_2^2 \right] p_t(x|x_0, x_1) dx_0 dx_1 dx \quad (30)$$

$$= z_0 z_1 \mathcal{L}_{\text{CFM}}(\theta) \quad (31)$$

where we use substitution for the first step and change the order of integration in the last step. With an application of [Theorem 3.2](#) the gradients are equivalent up to a factor of  $z_0 z_1$  which does not depend on  $x$ .  $\square$

Of course  $\mathcal{L}_{\text{ECFM}}$  leaves the question of sampling open for high-dimensional spaces. Sampling uniformly does not scale well to high dimensions, so for practical reasons we may want a different sampling strategy.

We use this objective in [Figure S9](#) with a uniform proposal distribution as a toy example of this type of training.

## D. Additional results

We start this section by the definition of the entropy regularized OT problem:

$$W(q_0, q_1)_{2, \lambda}^2 = \inf_{\pi_\lambda \in \Pi} \int_{\mathcal{X}^2} c(x, y)^2 \pi_\lambda(dx, dy) - \lambda H(\pi), \quad (32)$$

where  $\lambda \in \mathbb{R}^+$  and  $H(\pi) = \int \ln \pi(x, y) d\pi(dx, dy)$ .

---

**Algorithm 2** Simplified Conditional Flow Matching

---

**Input:** Empirical or samplable distributions  $q_0, q_1$ , bandwidth  $\sigma$ , batchsize  $b$ , initial network  $v_\theta$ .

**while** Training **do**

/\* Sample batches of size  $b$  i.i.d. from the datasets \*/

$\mathbf{x}_0 \sim q_0(\mathbf{x}_0); \quad \mathbf{x}_1 \sim q_1(\mathbf{x}_1)$

$t \sim \mathcal{U}(0, 1)$

$\mu_t \leftarrow t\mathbf{x}_1 + (1-t)\mathbf{x}_0$

$x \sim \mathcal{N}(\mu_t, \sigma^2 I)$

$\mathcal{L}_{\text{CFM}}(\theta) \leftarrow \|v_\theta(t, x) - (\mathbf{x}_1 - \mathbf{x}_0)\|^2$

$\theta \leftarrow \text{Update}(\theta, \nabla_\theta \mathcal{L}_{\text{CFM}}(\theta))$

**return**  $v_\theta$

---



---

**Algorithm 3** Minibatch OT Conditional Flow Matching

---

**Input:** Empirical or samplable distributions  $q_0, q_1$ , bandwidth  $\sigma$ , batch size  $b$ , initial network  $v_\theta$ .

**while** Training **do**

/\* Sample batches of size  $b$  i.i.d. from the datasets \*/

$\mathbf{x}_0 \sim q_0(\mathbf{x}_0); \quad \mathbf{x}_1 \sim q_1(\mathbf{x}_1)$

$\pi \leftarrow \text{OT}(\mathbf{x}_1, \mathbf{x}_0)$

$(\mathbf{x}_0, \mathbf{x}_1) \sim \pi$

$t \sim \mathcal{U}(0, 1)$

$\mu_t \leftarrow t\mathbf{x}_1 + (1-t)\mathbf{x}_0$

$\mathbf{x} \sim \mathcal{N}(\mu_t, \sigma^2 I)$

$\mathcal{L}_{\text{CFM}}(\theta) \leftarrow \|v_\theta(t, \mathbf{x}) - (\mathbf{x}_1 - \mathbf{x}_0)\|^2$

$\theta \leftarrow \text{Update}(\theta, \nabla_\theta \mathcal{L}_{\text{CFM}}(\theta))$

**return**  $v_\theta$

---

**Regularized CNF tuning** Continuous normalizing flows with a path length penalty optimize a relaxed form of a dynamic optimal transport problem (Tong et al., 2020; Finlay et al., 2020; Onken et al., 2021). Where dynamic optimal transport solves for the optimal vector field in terms of average path length where the marginals at time  $t = 0$  and  $t = 1$  are constrained to equal two input marginals  $q_0$  and  $q_1$ . Instead of this pair of hard constraints, regularized CNFs instead set  $q_0 := \mathcal{N}(x | 0, 1)$  and optimize a loss of the form

$$L(x(t)) = -\log p(x(t)) + \lambda_e \int_0^1 \|v_\theta(t, x(t))\|^2 dt \quad (33)$$

where  $\frac{dx}{dt} = v_\theta(t, x(t))$  and  $\log p(x(T))$  is defined as

$$\log p(x(T)) = p(x(0)) + \int_0^T \frac{\partial \log p(x(t))}{\partial t} dt = p(x(0)) + \int_0^T -\text{tr} \left( \frac{dv_\theta}{dx(t)} \right) dt \quad (34)$$

where the second equality follows from the instantaneous change of variables theorem (Chen et al., 2018, Theorem 1). In practice it is difficult to pick a  $\lambda_e$  which both produces flows with short paths and allows the model to fit the data well. We analyze the effect of this parameter over three datasets in Figure S1. In this figure we analyze the Normalized 2-Wasserstein to the target distribution (which approaches 1 with good fit), and the Normalized Path Energy (NPE). We find a tradeoff between short paths (Low NPE) and good fit (Low 2-Wasserstein). We choose  $\lambda_e = 0.1$  as a good tradeoff across datasets, which has paths that are not too much longer than optimal but also fits the data well.

**Ablation results on batch size.** Since we use Minibatch-OT for OT-CFM, when the minibatch size is equal to one, then OT-CFM is equivalent to CFM. This effect can be seen in Figure S2, where over four datasets, OT-CFM starts with equal path length and approximately equal 2-Wasserstein. Then the normalized path energy decreases surprisingly quickly plateauing after batchsize reaches  $\sim 64$ . While the minibatch size needed to approximate the true dynamic optimal transport paths will vary with dataset (for example in the moon-8gaussian case we need a larger batch size) it is still somewhat surprising that such small batches are needed as this is less than 0.5% of the entire 10k point dataset per batch.

**Algorithm 4** Minibatch Schrödinger Bridge Conditional Flow Matching

---

**Input:** Empirical or samplable distributions  $q_0, q_1$ , bandwidth  $\sigma$ , batch size  $b$ , initial network  $v_\theta$ .

**while** Training **do**

*/\* Sample batches of size  $b$  i.i.d. from the datasets \*/*

$\mathbf{x}_0 \sim q_0(\mathbf{x}_0); \quad \mathbf{x}_1 \sim q_1(\mathbf{x}_1)$

$\pi_{2\sigma^2} \leftarrow \text{Sinkhorn}(\mathbf{x}_1, \mathbf{x}_0, 2\sigma^2)$

$(\mathbf{x}_0, \mathbf{x}_1) \sim \pi_{2\sigma^2}$

$\mathbf{t} \sim \mathcal{U}(0, 1)$

$\mu_t \leftarrow \mathbf{t}\mathbf{x}_1 + (1 - \mathbf{t})\mathbf{x}_0$

$\mathbf{x} \sim \mathcal{N}(\mu_t, \sigma^2\mathbf{t}(1 - \mathbf{t})I)$

$\mathbf{u}_t(\mathbf{x}|\mathbf{z}) \leftarrow \frac{1-2\mathbf{t}}{2\mathbf{t}(1-\mathbf{t})}(\mathbf{x} - (\mathbf{t}\mathbf{x}_1 + (1 - \mathbf{t})\mathbf{x}_0)) + (\mathbf{x}_1 - \mathbf{x}_0)$   $\triangleright$  From eq. 21

$\mathcal{L}_{\text{CFM}}(\theta) \leftarrow \|v_\theta(\mathbf{t}, \mathbf{x}) - \mathbf{u}_t(\mathbf{x}|\mathbf{z})\|^2$

$\theta \leftarrow \text{Update}(\theta, \nabla_\theta \mathcal{L}_{\text{CFM}}(\theta))$

**return**  $v_\theta$

---

Table S1: Mean training time till convergence in  $10^3$  seconds over 5 seeds, with the exception of DSB, trained over 1 seed. CFM variants and DSB are trained on a single CPU with 5GB of memory where other baselines are given two CPUs and one GPU. CFM, with significantly fewer resources, still trains the fastest.

	8gaussians	moons-8gaussians	moons	scurve	mean
OT-CFM	$1.284 \pm 0.028$	$1.587 \pm 0.204$	$1.464 \pm 0.158$	$1.499 \pm 0.157$	$1.484 \pm 0.192$
CFM	$0.993 \pm 0.021$	$1.102 \pm 0.171$	<b><math>1.059 \pm 0.158</math></b>	<b><math>1.008 \pm 0.106</math></b>	$1.046 \pm 0.132$
FM	$0.839 \pm 0.096$	—	$1.076 \pm 0.126$	$1.127 \pm 0.123$	$1.014 \pm 0.170$
SB-CFM	<b><math>0.713 \pm 0.386</math></b>	<b><math>0.794 \pm 0.293</math></b>	$1.143 \pm 0.389$	$1.230 \pm 0.424$	<b><math>0.935 \pm 0.397</math></b>
Reg. CNF	$2.684 \pm 0.052$	—	$9.154 \pm 1.535$	$9.022 \pm 3.207$	$8.021 \pm 3.288$
CNF	$1.512 \pm 0.234$	—	$17.124 \pm 4.398$	$27.416 \pm 13.299$	$18.810 \pm 12.677$
ICNN	$3.712 \pm 0.091$	$3.046 \pm 0.496$	$2.558 \pm 0.390$	$2.200 \pm 0.034$	$2.912 \pm 0.626$
DSB	$5.418 \pm$ —	$5.682 \pm$ —	$5.428 \pm$ —	$5.560 \pm$ —	$5.522 \pm$ —

**The effect of  $\sigma$  on fit and path length.** Next we consider  $\sigma$ , the bandwidth parameter of the Gaussian conditional probability path. In Figure S3 we study the effect of  $\sigma$  on the fit (top) and the path energy (bottom). With  $\sigma > 1$  methods start to underfit with high 2-Wasserstein error and either very long or very short paths. As for specific models, SB-CFM becomes unstable with  $\sigma$  too small due to the lack of convergence for the static Sinkhorn optimization with small regularization. FM and CFM follow similar trends where they fit fairly well with  $\sigma \leq 1$  but have paths that are significantly longer than optimal by 2-3x. OT-CFM maintains near optimal path energies and near optimal fit until  $\sigma > 1$ .

**Schrödinger bridge fit over simulation time.** In Figure S7 we compare the fit of Diffusion Schrödinger Bridge model with SB-CFM conditioned on time. The Diffusion Schrödinger Bridge seems to outperform SB-CFM early in the trajectory, however fails to fit the bridge after many integration steps.

### D.1. Objective variance.

We consider the variance of the objective  $u_t(x|z)$  with respect to  $z$ . While for any  $x$  we have  $\mathbb{E}_q(z)u_t(x|z) = u_t(x)$ , we find a lower second moment speeds up training. Specifically, we seek to understand the effect of the second moment which we call the *objective variance* defined as

$$OV = \mathbb{E}_{\mathbf{t} \sim \mathcal{U}(0,1), \mathbf{x} \sim p_t(\mathbf{x}), \mathbf{z} \sim q(\mathbf{z})} \|u_t(\mathbf{x}|\mathbf{z}) - u_t(\mathbf{x})\|^2 \quad (35)$$

on training speed for different objectives in Table 1. We estimate the variance on a small data with a known  $u_t(x)$ . We examine this estimated objective variance and its effect on training convergence in Figure S8, showing that either OT-CFM or variance reduced CFM with averaging over the batch results in lower variance of the objective. This in turn leads to faster training times as shown on the right. Averaging over a batch of data leads to faster training particularly for methods with high objective variance (CFM) and less so for those with low (OT-CFM), which already trains quickly.

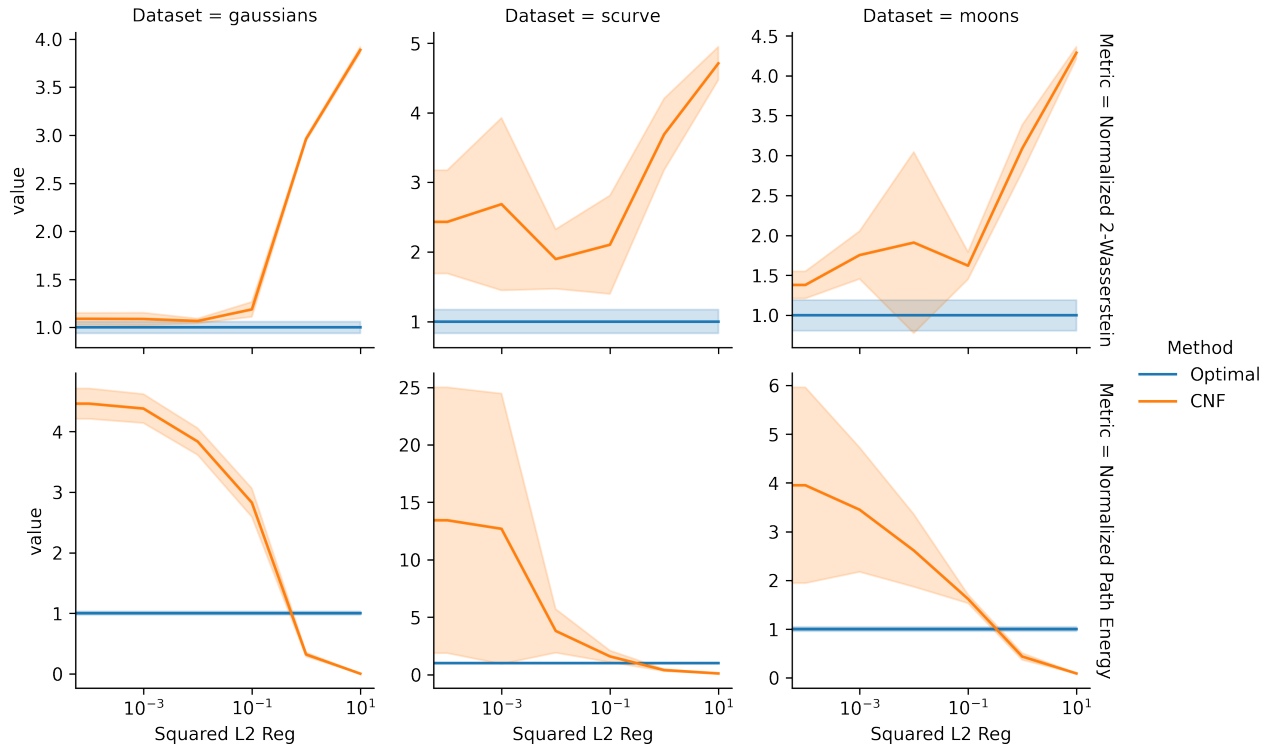


Figure S1: Evaluation of regularization strength of  $\lambda_e$  over 6 seeds in the range  $[0, 10^{-5}, 10^2]$ .  $\lambda_e = 0.1$  performs the best in terms of minimizing path length and test error. We call this model "Regularized CNF".

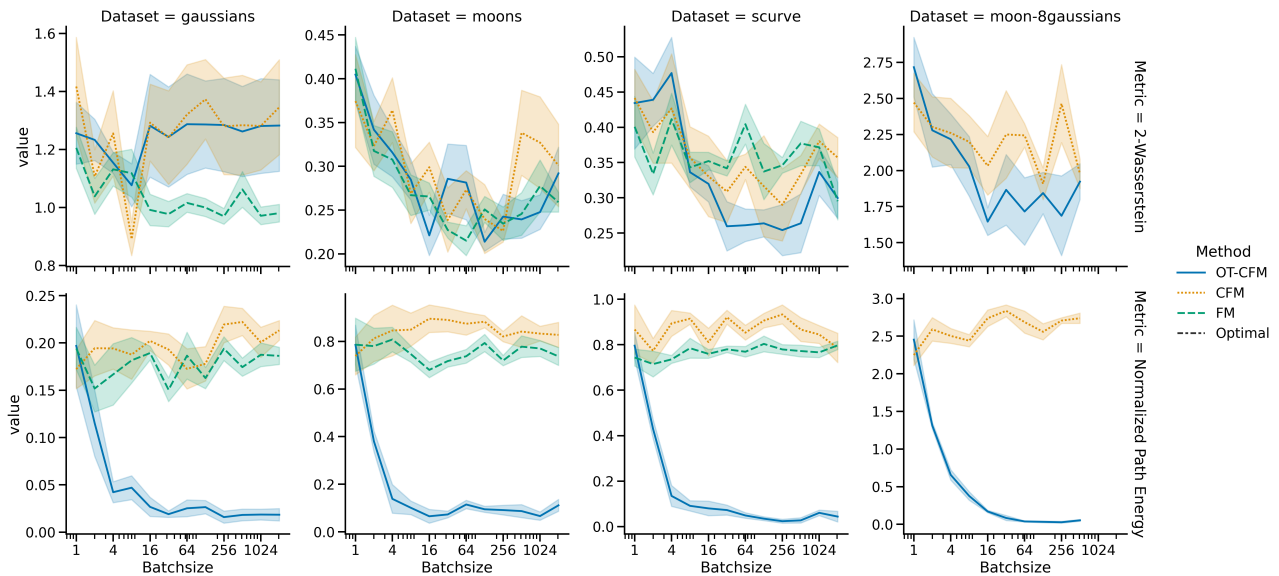


Figure S2:  $\mu \pm \sigma$  of mean path length prediction error over 5 seeds. Lower is better. Introducing OT to CFM batches straightens paths lowering cost towards the optimal  $W^2$  as compared to a standard random conditional flow matching network over all batch sizes.



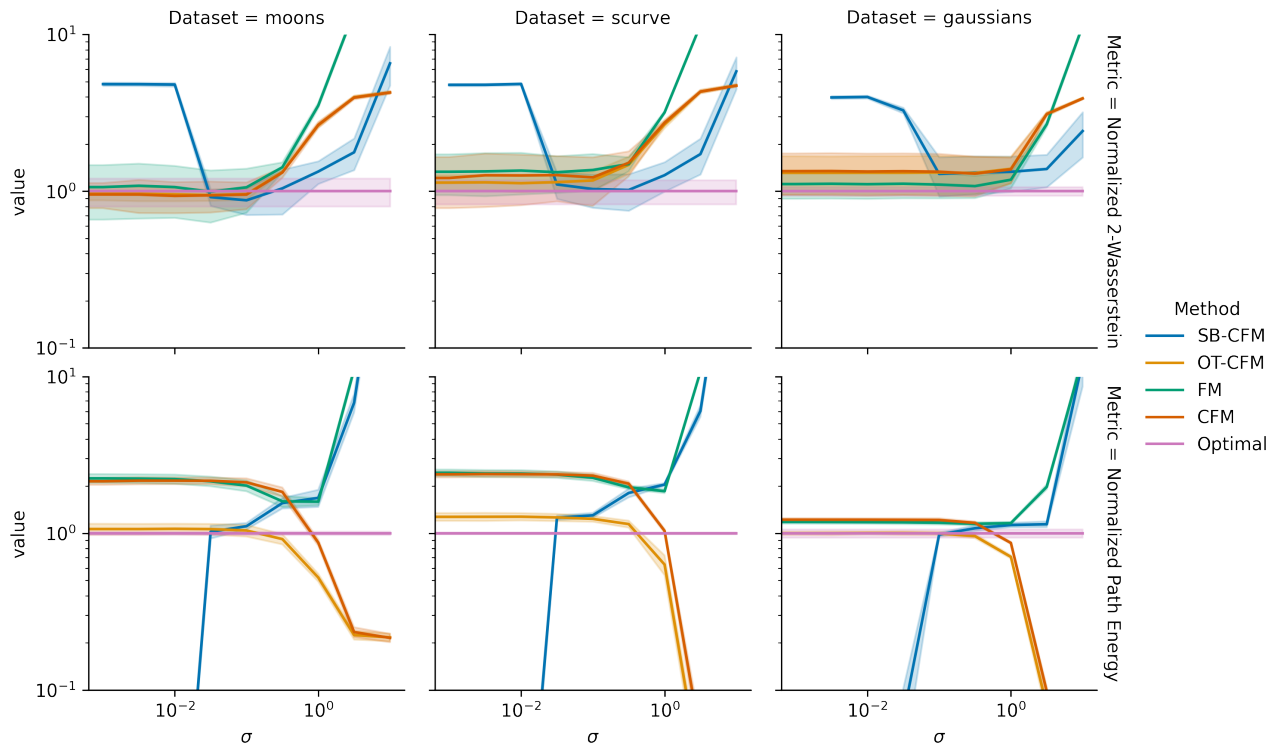


Figure S3: Evaluation of the effect of  $\sigma$  for conditional flow matching models. When  $\sigma < 1$  OT-CFM

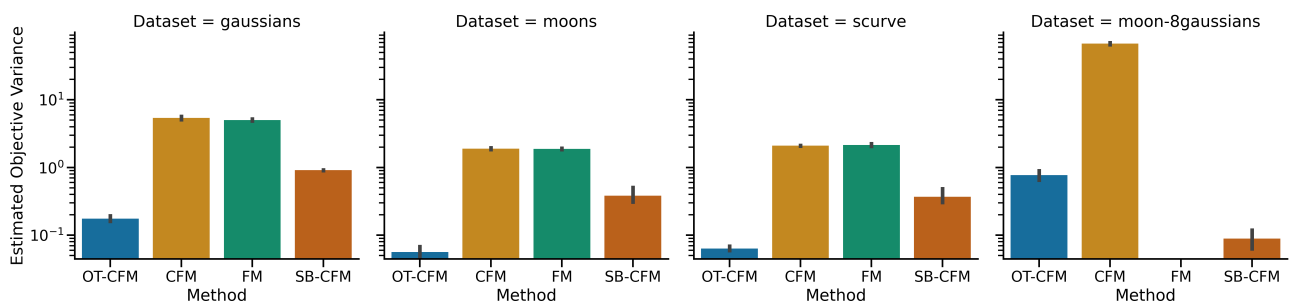


Figure S4: Estimated Objective Variance Eq. 35 for different methods with batch size 512,  $\sigma = 0.1$  across datasets. OT-CFM and SB-CFM have significantly lower objective variance than CFM and FM which have roughly equivalent objective variance.

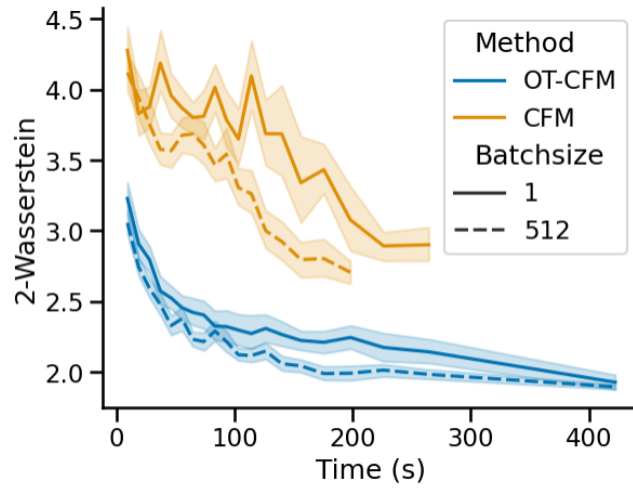


Figure S5: Validation 2-Wasserstein distance against training time with variance reduction by aggregation either with no aggregation (Batchsize 1) or aggregation over a minibatch (Batchsize 512). Variance reduction leads to faster training, especially for CFM where the objective variance is naturally larger than OT-CFM which sees a small performance gain.

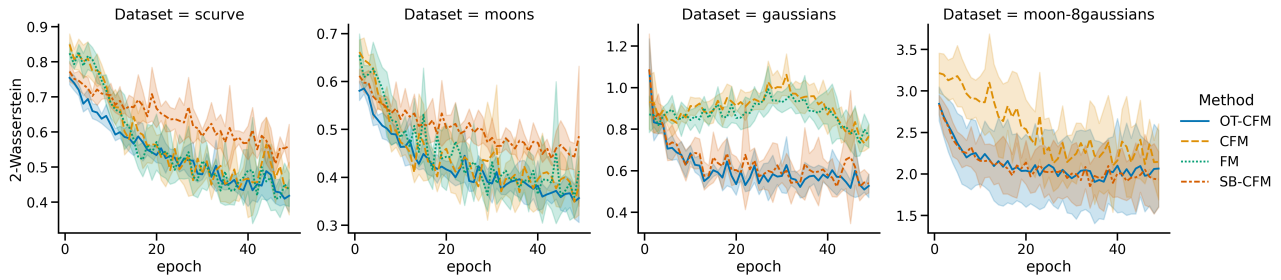


Figure S6: Extended results from Figure 2 (left) over two more datasets. OT-CFM is still consistently the fastest converging method.

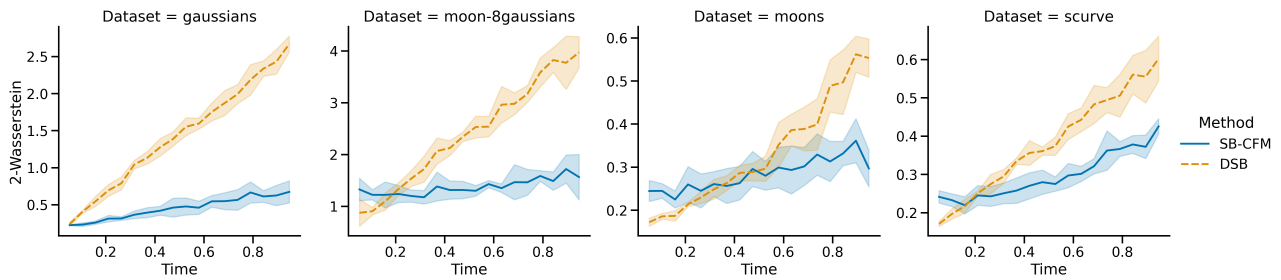


Figure S7: 2-Wasserstein Error between trajectories and ground truth Schrödinger Bridge samples over simulation time.

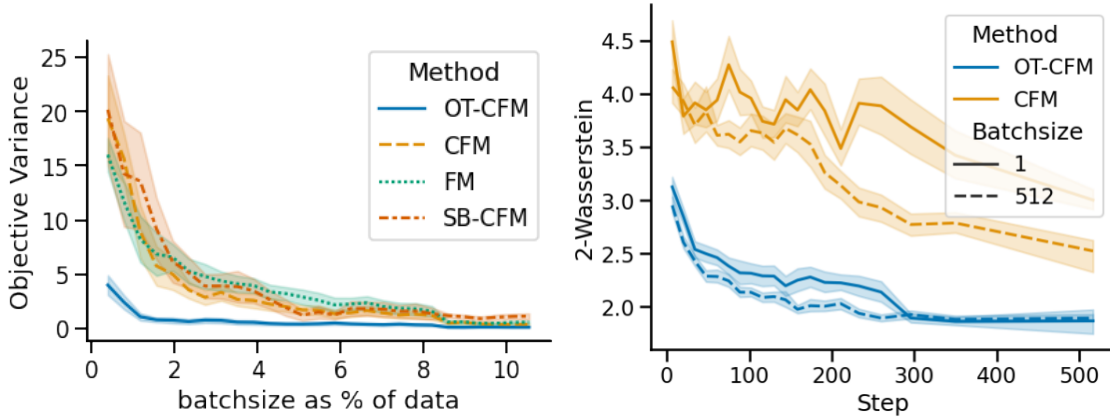


Figure S8: (left) Variance of the objective for varying batch size. OT-CFM has a lower variance across batch sizes. (right) Validation 2-Wasserstein performance with batch averaging as in Appendix C.1. Reducing variance improves training efficiency.

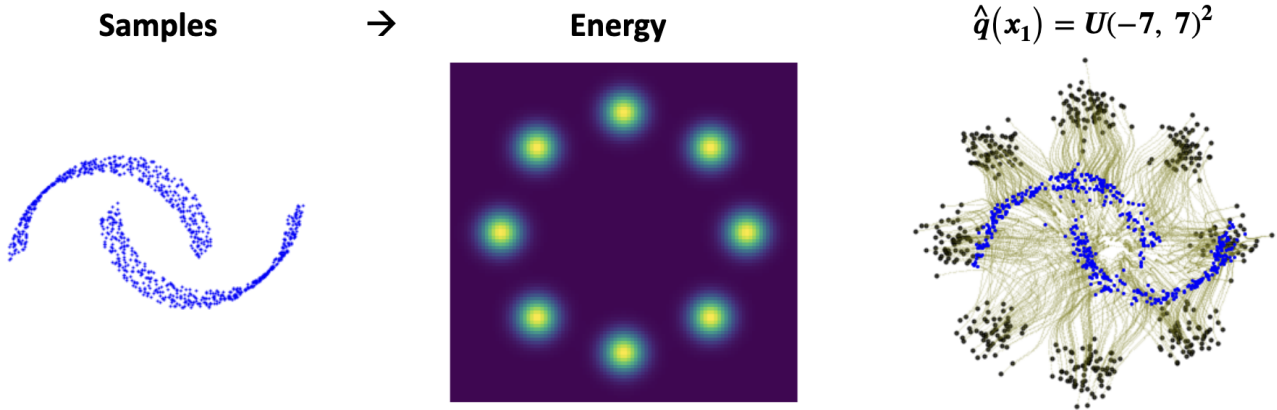


Figure S9: Flows (green) from (a) moons to (b) 8-Gaussians unnormalized density function learned using CFM with RWIS.

Variance in the conditional objective target  $u_t(x|z)$  varies across models. In Figure S4 we study the objective variance across CFM objective functions. Here we estimate the objective variance in eq. 35 as

$$\mathbb{E}_{x,t,z} \|u_t(x|z) - v_\theta(t,x)\|^2 \quad (36)$$

after training has converged. After training has converged  $v_\theta$  should be very close to  $u_t(x)$  so we use it as an empirical estimator of  $u_t(x)$  to compute the variance. We find that across all datasets OT-CFM and SB-CFM have at least an order of magnitude lower variance than CFM and FM objectives. This correlates with faster training as measured by lower validation error in fewer steps for lower variance models as seen in Figure 2 (left).

We examine the objective variance OV by conditioning  $u_t(x|z)$  on a batch of pairs of data points,  $\bar{z} := \{z^i := (x_0^i, x_1^i)\}_{i=1}^m$ , we can reduce the variance of the OV objective to 0 for all models as batchsize goes to population size. For the batchsize  $m$  range from 1 to the number of the population, we uniformly sample  $m$  pairs of points  $z^i$  and compute the probability  $p_t(x|\bar{z})$  and the objective  $u_t(x|\bar{z})$  from equation 24 and 25.

We also find that averaging over batches makes the network achieve a lower validation error in fewer steps and in less walltime (Figure S5).

## D.2. Energy-based CFM

We show how CFM and OT-CFM can be adapted to the case where we do not have access to samples from the target distribution, but only an unnormalized density (equivalently, energy function) of the target,  $R(x_1)$  (Figure S9). We consider the 10-dimensional funnel dataset from Hoffman & Gelman (2011). We aim to learn a flow from the 10-dimensional

Table S2: Energy-based CFM results on the 10-dimensional funnel dataset: log-partition function estimation bias (mean and standard deviation over 10 runs) and time to generate 6000 samples from the trained ODE. With adaptive integration, OT-CFM requires fewer function evaluations. With a fixed-interval solver, OT-CFM has lower discretization error, leading to a better estimate. PIS baseline is from [Zhang & Chen \(2022\)](#).

	RWIS		MCMC	
	$\log \hat{Z}$	$\int$ time	$\log \hat{Z}$	$\int$ time
<b>adaptive Dormand-Prince (tolerance 0.01) integration</b>				
CFM	$-0.068 \pm 0.041$	$26.6 \pm 8.4\text{s}$	$0.029 \pm 0.037$	$34.6 \pm 6.0\text{s}$
OT-CFM	$-0.076 \pm 0.098$	<b><math>13.3 \pm 1.7\text{s}</math></b>	$0.009 \pm 0.045$	<b><math>12.8 \pm 1.2\text{s}</math></b>
FM	$-0.033 \pm 0.057$	$26.5 \pm 7.7\text{s}$	$0.027 \pm 0.031$	$30.9 \pm 5.8\text{s}$
<b>Euler (<math>N = 10</math>) integration</b>				
CFM	$0.281 \pm 0.202$	$4.0 \pm 0.8\text{s}$	$0.336 \pm 0.030$	$3.7 \pm 0.7\text{s}$
OT-CFM	<b><math>-0.039 \pm 0.030</math></b>	$4.2 \pm 0.6\text{s}$	<b><math>0.146 \pm 0.107</math></b>	$4.1 \pm 0.8\text{s}$
FM	$0.176 \pm 0.044$	$4.1 \pm 0.7\text{s}$	$0.334 \pm 0.066$	$3.9 \pm 0.6\text{s}$
<b>Euler-Maruyama (<math>N = 100</math>) integration</b>				
PIS (SDE)	$-0.018 \pm 0.020$			

standard Gaussian to the energy function of the funnel. We consider two algorithms, each of which has certain advantages:

- (1) Reweighted importance sampling (RWIS): We construct a *weighted* batch of target points  $x_1$  by sampling  $x_1 \sim \mathcal{N}(\mathbf{0}, \mathbf{I})$  and assigning it a weight of  $R(x_1)/\mathcal{N}(x_1; \mathbf{0}, \mathbf{I})$  normalized to sum to 1 over the batch. The FM and CFM objectives handle weighted samples in a trivial way (by simply using the weights as  $q(x_1)$  in [Table 1](#)), while OT-CFM treats the weights as target marginals in constructing the OT plan between  $x_0$  and  $x_1$ . We expect RWIS to perform well when batches are large and the proposal and target distributions are sufficiently similar; otherwise, numerical explosion of the importance weights can hinder learning.
- (2) MCMC: We use samples from a long-run Metropolis-adjusted Langevin MCMC chain on the target density as approximate target samples. We expect this method to perform well when the MCMC mixes well; otherwise, modes of the target density may be missed.

As an evaluation metric, we use the estimation bias of the log-partition function using a reweighted variational bound, following prior work that studied the problem using SDE modeling ([Zhang & Chen, 2022](#)). The computation of this metric for CNFs is given in the Appendix (§E.6).

The results are shown in [Table S2](#). When an adaptive ODE integrator is used, all algorithms achieve similar results (no pair of mean log-partition function estimates is statistically distinguishable with  $p < 0.1$  under a Welch’s  $t$ -test) but OT-CFM is about twice as efficient as CFM and FM. However, with a fixed computation budget for ODE integration, OT-CFM performs significantly better.

## E. Experiment and implementation details

### E.1. Physical experimental setup

All experiments were performed on a shared heterogenous high-performance-computing cluster. This cluster is primarily composed of GPU nodes with RTX8000, A100, and V100 Nvidia GPUs. Since the network and nodes are shared, other users may cause high variance in the training times of models. However, we believe that the striking difference between the convergence times in [Table S1](#) and combined with the CFM training setup with a single CPU and the baseline models trained with two CPUs and a GPU, paints a clear picture as to how efficient CFM training is. Qualitatively, we feel that most CFMs converge quite a bit more rapidly than these metrics would suggest, often converging to a near optimal validation performance in minutes.

## E.2. 2D, single-cell, and Schrödinger bridge experimental setup

For all experiments we use the same architecture implemented in PyTorch (Paszke et al., 2019). We concatenate the flattened input  $x \in \mathbb{R}^d$  and the time  $t$  as the  $d + 1$  inputs to a network with three hidden layers of width 64 interspersed with SELU activations (Klambauer et al., 2017) followed by a linear output layer of width  $d$ . This forms our  $v_\theta$  for all experiments. For all 2D and single-cell experiments we train for 1000 epochs and implement early stopping on the validation loss which checks the loss on a validation set every 10 epochs and stops training if there is no improvement for 30 epochs. We also set a time limit of 100 minutes for each CFM model. This is hit almost exclusively for SB-CFM models with small  $\sigma$  which are unstable to train due to instabilities and non-convergence of the Sinkhorn (Cuturi, 2013) transport plan optimization. We use the AdamW (Loshchilov & Hutter, 2019) optimizer with weight decay  $10^{-5}$  with batchsize 512 by default in 2D experiments and 128 in the single cell datasets. For OT-CFM and SB-CFM we use exact linear programming EMD and Sinkhorn algorithms from the python optimal transport package (Flamary et al., 2021) For evaluation of trajectories unless otherwise noted we use the Runge-Kutta45 (rk4) ODE solver with 101 timesteps from 0 to 1.

## E.3. Variance reduction by averaging

We tackle the exploration of the effects of reducing variance of the target  $u_t(x|z)$  from two directions. The first is for small example where we can compute the ground truth  $u_t(x)$  quickly, and the second is in the setting of trained models where we can estimate  $u_t(x)$  with  $v_\theta(t, x)$  after  $v_\theta$  has converged.

We first consider the convergence of each flow matching objective (OT-CFM, CFM, FM, SB-CFM) to zero as a function of the batch size relative to the dataset size. This is done by first sampling  $t, x, z$  then computing the true objective variance across many samples. This appears in Figure S8.

We next consider the effect of averaging over a batch to reduce the variance of the objective in Figure S8 (right). Here Batchsize refers to the size of the batch we are averaging over. We aggregate this into a single target so that the model sees a single  $d$  dimensional target vector for one sampled  $x, t$ . This means that we can compare different aggregation sizes fairly.

## E.4. Schrödinger bridge evaluation setup

To evaluate how well Schrödinger Bridge models actually model a Schrödinger Bridge, we constrain ourselves to a small example with 1000 points. We note that the closed-form Schrödinger marginals are known for discrete densities, for Gaussians (Mallasto et al., 2022), and can be constructed for two approximate datasets (Korotin et al., 2021), which present other ways of evaluating Schrödinger bridge performance. For any time  $t$  we can sample from the ground truth Schrödinger bridge density  $p_t(x)$  as

$$\begin{aligned} (x_0, x_1) &\sim \pi_{2\sigma^2} \\ X_t &\sim \mathcal{N}(x \mid tx_1 + (1-t)x_0, \sigma t(1-t)) \end{aligned}$$

We sample trajectories of length 20 from  $t = 0$  to  $t = 1$  by integrating over time from  $t = 0$  to  $t = 1$ . At each of the 18 intermediate timepoints we compute the 2-Wasserstein distance between a sample of size 1000 from the trajectories at that time and the ground truth  $X_t$  as above at that time. We reported the average across the 18 intermediate timepoints in Table 3 and plot the 2-Wasserstein distance over time in Figure S7.

**SB-CFM Model** We train SB-CFM with  $\sigma = 1$  and batchsize=512 for each of the datasets. We save 1000 trajectories from a test set integrated with the tsit5 solver with atol=rtol=1e-4.

**Diffusion Schrödinger bridge model implementation details** We use the implementation from (De Bortoli et al., 2021). Only the networks were changed for a fair comparison with CFM. The forward and backward networks are composed of an MLP with three hidden layers of size 64, with SELU activations in between layers. We used a time and a positional encoders composed of two layers of size 16 and 32 with LeakyReLU activations has inputs to the score network. The architectures are the same for the 2D examples and the single-cell examples (except for the input dimension). During training, we set the variance ( $\gamma$  in the author’s code) to 0.001 and did 20 steps to discretize the Langevin dynamic. We trained for 10k iterations with 10k particles and batch size of 512, for 20 iterative proportional fitting steps, and a learning rate set to 0.0001. For the interpolation task we used the tenth timepoint from the Langevin dynamic with the backward network trained to go from the distribution at time  $t - 1$  to  $t + 1$ . All trajectories are evaluated from the backward dynamic. We use  $\sigma = 1$  and batchsize=512.

### E.5. Single-cell experimental setup

We strove to be consistent with the experimental setup of Tong et al. (2020). For the Embryoid body (EB) data, we use the same processed artifact which contains the first 100 principal components of the data. For our tests we truncate to the first five dimensions, then whiten (subtract mean and divide by standard deviation) each dimension. For the Embryoid body (EB) dataset which consists of 5 timepoints collected over 30 days we train separate models leaving out times 1, 2, 3 in turn. We train a CFM over the full time scale (0-4). During testing we push forward all points  $X_{t-1}$  to time  $t$  as a distribution to test against.

For the Cite and Multi datasets these are sourced from the Multimodal Single-cell Integration challenge at NeurIPS 2022, a NeurIPS challenge hosted on Kaggle where the task was multi-modal prediction (Burkhardt et al., 2022). In this competition they used this data to investigate the predictability of RNA from chromatin accessibility and protein expression from RNA. Here, we repurpose this data for the task of time series interpolation. Both of these datasets consist of four timepoints from CD34+ hematopoietic stem and progenitor cells (HSPCs) collected on days 2, 3, 4, and 7. For more information and the raw data see the competition site.<sup>5</sup> We preprocess this data slightly to remove patient specific effects by focusing on a single donor (donor 13176), then we again compute the first five principal components and again whiten each dimension to further normalize the data.

### E.6. Energy-based CFM

The 10-dimensional funnel dataset is defined by  $\mathbf{x}_0 \sim \mathcal{N}(0, \mathbf{I})$ ,  $\mathbf{x}_1, \dots, \mathbf{x}_9 \sim \mathcal{N}(\mathbf{0}, \exp(\mathbf{x}_0)\mathbf{I})$ . We attempted to mimic the SDE model architecture from Zhang & Chen (2022) for the flow model  $v_\theta(t, x)$ . The time step  $t$  is encoded with 128-dimensional Fourier features, then both  $x$  and  $t$  are independently processed with two-layer MLPs. The two representations are concatenated and processed through another three-layer MLP to make the prediction. All MLPs use GELU activation and have 128 units per hidden layer. We trained all models with  $\sigma = 0.05$  and learning rate  $10^{-2}$ , the highest at which they were stable, for 1500 batches of size 300, to be consistent with the settings from Zhang & Chen (2022).

The importance-weighted estimate of the log-partition function is defined

$$\log \hat{Z} = \log \frac{1}{K} \sum_{i=1}^K \frac{R(x_1^{(i)})}{\mathcal{N}(x_0^{(i)}; 0, \mathbf{I})} \left| \frac{\partial x_1}{\partial x_0} \right|_{x_0=x_0^{(i)}},$$

where  $x_0^{(i)}$  are independent samples from the source distribution and  $x_1^{(i)}$  is  $x_0^{(i)}$  pushed forward by the flow (note that the Jacobian can be computed by differentiating the ODE integrator). We used  $K = 6000$  samples.

For MCMC, to be consistent with Zhang & Chen (2022), we generated 15000 samples, each of which was seen 30 times in training. We used 1000 steps of Metropolis-adjusted Langevin sampling with  $\epsilon$  linearly decaying from 0.1 to 0.

The flow network used to generate Fig. S9 followed similar settings to those used in §5.1.

### E.7. Unsupervised translation

We trained a vanilla convolutional VAE, with about 7 million parameters in the encoder, on CelebA faces scaled to  $128 \times 128$  resolution.

For the flow network  $v_\theta(t, x)$ , we used a MLP with four hidden layers of 512 units and leaky ReLU activations taking the 129-dimensional concatenation of  $x$  and  $t$  as input. All models CFM and OT-CFM were trained for 5000 batches of size 256 and the Adam optimizer with learning rate  $10^{-3}$ . Integration was performed using the Dormand-Prince integrator with tolerance  $10^{-3}$ . For each attribute, 1000 positive and negative images each were used as a held-out test set.

Figure S10 shows some examples of the learned trajectories.

### E.8. Unconditional CIFAR-10 experiments

For the CIFAR-10 experiments we followed the setup as described in Lipman et al. (2023). All methods were trained with the same setup, only differing in the choice of probability path. Since code has not been released for this work, there are a few parameters which may differ. We summarize the setup here, where the exact parameter choices can be seen in the source code.

We used the Adam optimizer with  $\beta_1 = 0.9$ ,  $\beta_2 = 0.999$ ,  $\epsilon = 10^{-8}$ , and no weight decay. We used the UNet architecture

<sup>5</sup><https://www.kaggle.com/competitions/open-problems-multimodal/data>



from Dhariwal & Nichol (2021) with channels = 256, depth = 2, channels multiple = [1, 2, 2, 2], heads = 4, heads channels = 64, attention resolution = 16, dropout = 0.0, batch size per gpu = 128, gpus = 2, epochs = 2000, maximum learning rate =  $5 \times 10^{-4}$ , minimum learning rate = 0, with a learning schedule that increases linearly from the minimum to the maximum learning rate over the first 200 epochs, and decays linearly from back to the minimum after that. We use  $\sigma = 10^{-4}$  for all models. For sampling, we use 100-step Euler integration using the torchdyn package.

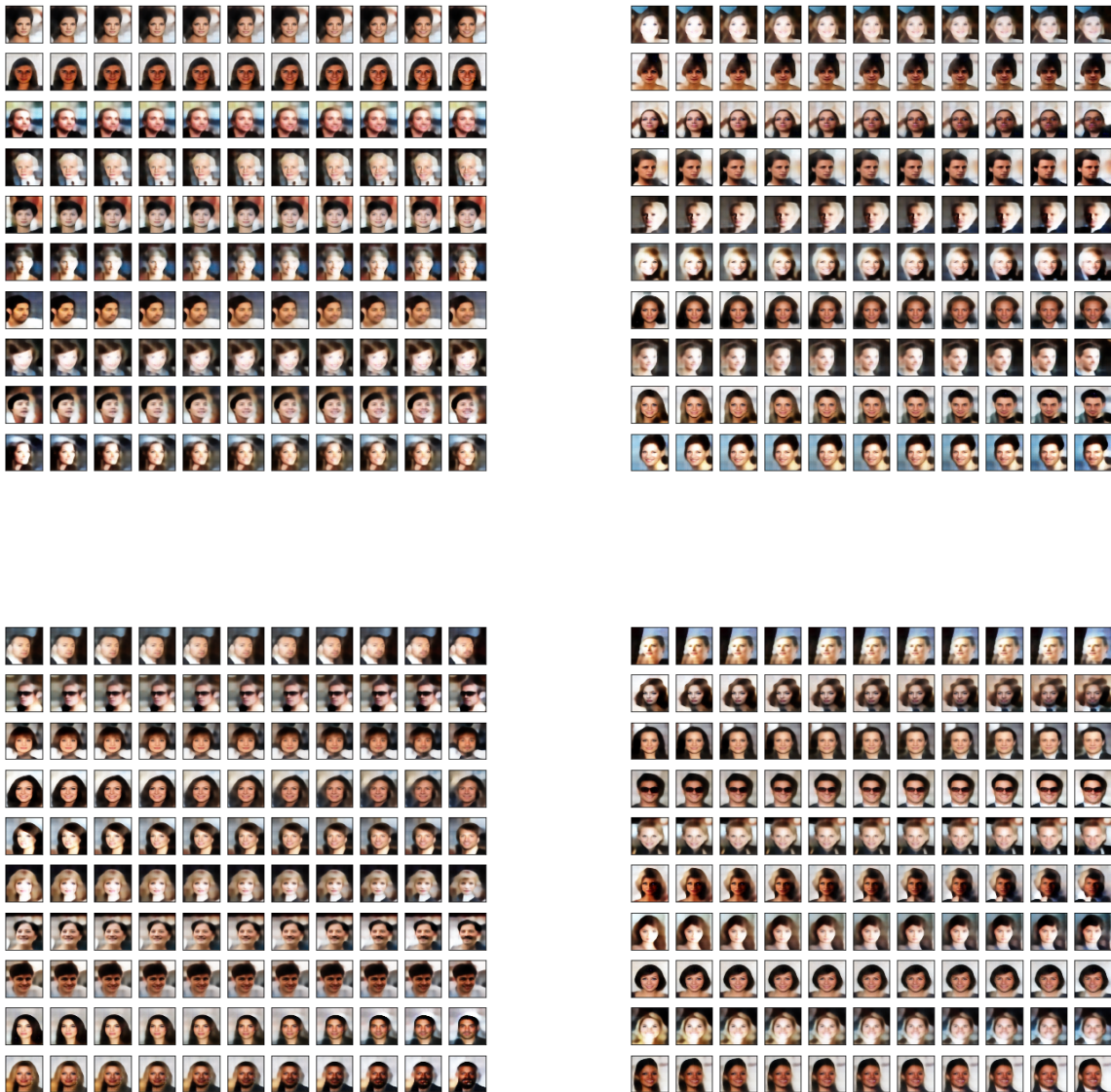


Figure S10: Image-to-image translation in the latent space of CelebA images: An OT-CNF is trained to translate between latent encodings of images that are negative and positive for a given attribute. The first column is a reconstructed encoding  $x_0$  of a real negative image. The next ten columns are decodings of images along the flow trajectory with initial condition  $x_0$ , with  $x_1$  shown in the right column. **Top row:** not smiling  $\rightarrow$  smiling, not male  $\rightarrow$  male, showing the preservation of image structure and other attributes. **Bottom row:** no mustache  $\rightarrow$  mustache, not wearing necktie  $\rightarrow$  wearing necktie, showing partial failure modes. Both features are well-predicted by the latent vector, but infrequent in the dataset and highly correlated with other attributes, such as ‘male’, leading to unpredictable behaviour for out-of-distribution samples and modification of attributes different from the target.