

ON A BENEFIT OF MASKED LANGUAGE MODEL PRE-TRAINING: ROBUSTNESS TO SIMPLICITY BIAS

Anonymous authors

Paper under double-blind review

ABSTRACT

Despite the success of pretrained masked language models (MLM), why MLM pretraining is useful is still a question not fully answered. In this work we theoretically and empirically show that MLM pretraining makes models robust to lexicon-level spurious features, partly answering the question. Our explanation is that MLM pretraining may alleviate problems brought by simplicity bias (Shah et al., 2020), which refers to the phenomenon that a deep model tends to rely excessively on simple features. In NLP tasks, those simple features could be token-level features whose spurious association with the label can be learned easily. We show that MLM pretraining makes learning from the context easier. Thus, pretrained models are less likely to rely excessively on a single token. We also explore the theoretical explanations of MLM’s efficacy in causal settings. Compared with Wei et al. (2021), we achieve similar results with milder assumptions. Finally, we close the gap between our theories and real-world practices by conducting experiments on real-world tasks.

1 INTRODUCTION

The question “*why is masked language model (MLM) pre-training (Devlin et al., 2019; Liu et al., 2019) useful?*” has not been totally answered. In this work, as an initial step toward the answer, we show and explain that MLM pretraining makes the model robust to lexicon-level features that are spuriously associated with the target label. It gives the model a better generalization capability under distribution shift.

Previous studies have empirically shown the robustness of MLM pretrained models. Hao et al. (2019) show that MLM pretraining leads to wider optima and better generalization capability. Hendrycks et al. (2020) and Tu et al. (2020) show that pretrained models are more robust to out-of-distribution data and spurious features. However, it remains unanswered why pretrained models are more robust.

We conjecture that models trained from scratch suffer from the pitfall of simplicity bias Shah et al. (2020) (Figure 1). Shah et al. (2020) and Kalimeris et al. (2019) showed that deep networks tend to converge to a simple decision boundary that involves only a few features. The networks may not utilize all the features and thus may not maximize the margin, which results in worse robustness. A consequence of this could be that a model may excessively rely on a feature that has spurious association with the label and ignore the other features that are more robust. In the studies of Shah et al. (2020) and Kalimeris et al. (2019), they investigated networks with continuous input. Lovering et al. (2021) discovered similar results on synthetic NLP tasks, where the inputs are discrete. We will further explore this discrete setting in this work.

We start the exploration with the following assumptions: Let the sentence, label pair be X, Y .

Assumption 1. We assume that from X , we can extract two features X_1 and X_2 .

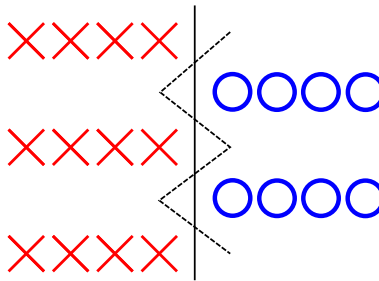


Figure 1: The pitfall of simplicity bias Shah et al. (2020): The solid line is a simple (linear) decision boundary that utilizes only one dimension, while the dashed line is a more complex decision boundary that utilizes two dimensions and maximizes the margin.

Assumption 2. X_1 is a spurious feature that has strong association with Y . Specifically, it means that, solely relying on X_1 , one can predict with high accuracy over the data distribution, but cannot be 100% correctly.

Assumption 3. X_2 is a robust feature based on which Y can be predicted with 100% accuracy. Namely, there exists a deterministic mapping $f_{X_2 \rightarrow Y}$ that maps X_2 to Y .

The assumptions above are realistic in some NLP tasks. In NLP tasks, the input X is a sequence of tokens. Some tasks satisfy Assumption 1: X can be decomposed into X_1 and X_2 , where X_1 is the presence of certain tokens, and X_2 is the context of the token. Thus, X_2 has a much higher dimensionality than X_1 . As shown by the analysis of Gardner et al. (2021), there are indeed datasets where Assumption 2 is true. However, if Assumption 3 is true, we would desire the model to rely on X_2 , which contains the semantics of the input X .

With these assumptions, in Section 2 we empirically demonstrate that spurious features in discrete inputs can cause problems as in the continuous cases Shah et al. (2020); Kalimeris et al. (2019). We show that, possibly due to the simplicity bias, a deep model is likely to excessively rely on X_1 and to rely on X_2 less. In Section 3.1 and Section 3.2 we provide a theoretical explanation of how MLM pretraining makes a model robust to spurious features. Let Π_1 be the conditional probability $P(X_1|X_2)$. We show (1) the relation between the mutual information $I(\Pi_1; Y) \geq I(X_1; Y)$ and that (2) the convergence rate of learning from Π_1 is of the same order as learning from X_1 . That is, when the MLM model can perfectly model the probability $P(X_1|X_2)$ and thus generate perfect Π_1 , learning from Π_1 is as easy as learning from X_1 . As a result, the model will be more likely to rely on Π_1 . Since Π_1 is estimated based on X_2 , higher reliance on Π_1 also implies higher reliance on the robust feature X_2 . This avoids the pitfall of simplicity bias that the model relies excessively on X_1 . To relax Assumption 3, we make one step further by considering causal settings in Section 3.3.

The above results partly explain why MLM pretraining is useful for NLP. Denote a sequence of tokens as $X = \langle X_1, X_2, \dots, X_L \rangle$. During the MLM pretraining process, each token is masked randomly at a certain probability, and the training objective is to predict the masked tokens with the maximum likelihood loss. As a result, the model is capable of estimating the conditional probability $P(X_i|X \setminus X_i)$ for all $i = 1, 2, \dots, L$. Even though which of the tokens is spurious is unknown, as long as the spurious token has a non-zero probability to be masked during pretraining, MLM can estimate its distribution conditioned on the context and thus can reduce the reliance on it.

Finally, we close the gap between our theories and reality. One major gap is that, in reality, we do not use the conditional probability for downstream tasks. Instead, we feed the input X without masking any token and fine-tune the model along with a shallow layer over its output. Regardless of that, we hypothesize that the robustness brought by MLM pretraining still exists. To prove that, in Section 4 we use the toy example and verify the effect of MLM pretraining when using the common practice for fine-tuning. In Section 5, we validate our theories with two real-world NLP tasks.

In sum, our study leads to new research directions. Firstly, we provide a new explanation of MLM pretraining’s efficacy. Unlike the previous purely theoretical studies Saunshi et al. (2021); Wei et al. (2021), our assumptions are milder and more realistic. Secondly, we study NLP robustness from the perspective of self-supervised model, which has been widely used since Word2vec Mikolov et al. (2013) and thus is indispensable to the generalization to unseen data. We reveal the mechanism that leads to its robustness, which may enable us to further reinforce it in the future.

2 A TOY EXAMPLE

To show that spurious association can cause difficulty of convergence, we construct a toy example with random variables X_1, X_2, Y and experimental variables (d_2, ν) . In our setting, the random variables X_1, X_2, Y satisfy the assumptions mentioned above, and the experimental variables ν, d_2 control the the strength the spurious association and the difficulty of learning from the robust features. Finally, we measure the difficulty of the task for different (d_2, ν) by counting the number of updates required for a model to converge.

Specially, we design the relationship between the random variables in the following way. Let the dimension of the random variables X_1 and X_2 be 2 and d_2 respectively. Their value $x_1 \in \mathcal{X}_1 = \{e_1, e_2\}$ and $x_2 \in \mathcal{X}_2 = \{e_1, \dots, e_{d_2}\}$, where e_i is the one-hot vector whose i th element is 1. We

d_2	ν	1 layer	2 layers		3 layers	
		w/o	w/o pre	w/ pre	w/o pre	w/ pre
50	0.04	3680 (189.5)	691 (55.8)	614 (169.1)	302 (47.2)	249 (53.7)
	0.10	2664 (121.2)	530 (30.6)	441 (134.9)	242 (27.6)	180 (37.5)
	0.25	1420 (96.0)	352 (23.8)	300 (62.0)	179 (13.8)	148 (28.7)
	0.50	306 (79.8)	141 (40.7)	118 (33.4)	106 (23.1)	89 (24.0)
100	0.04	5466 (170.1)	945 (57.2)	689 (225.3)	431 (51.1)	275 (72.1)
	0.10	3789 (99.2)	677 (32.2)	478 (142.9)	317 (30.3)	208 (44.3)
	0.25	1952 (64.9)	428 (13.1)	330 (85.0)	214 (16.2)	169 (32.5)
	0.50	330 (78.0)	156 (34.0)	133 (41.2)	128 (28.2)	112 (36.1)
500	0.04	11127 (265.9)	1953 (112.5)	857 (442.6)	792 (69.8)	431 (88.4)
	0.10	7912 (169.2)	1279 (67.5)	657 (234.9)	550 (46.7)	402 (97.0)
	0.25	4321 (152.3)	772 (35.5)	501 (133.5)	399 (42.3)	391 (66.0)
	0.50	576 (150.0)	392 (70.2)	407 (81.1)	367 (69.1)	386 (80.0)

Table 1: The number of iterations a model w/ or w/o pretraining requires to converge. The number is the average of 25 runs with different random seeds, and the number in parentheses is the standard deviation.

make X_1 depends only on X_2 , so it is not a causal feature of Y . We control the strength of the association between X_1 and Y with $\nu < 0.5$, making $X_1 = Y$ with probability $1 - \nu$. Given a ν , we design the relation between X_1 and X_2 in a way that maximize the number of dimensions in X_2 containing no information about X_1 . Denote with \tilde{X}_2 the middle $2\nu d_2$ dimensions of X_2 , i.e. the $\lfloor d_2/2 - \nu d_2 \rfloor$ th to the $\lfloor d_2/2 + \nu d_2 \rfloor$ th elements in X_2 , the random process is as follows

$$\begin{aligned}
 X_2 &= e_i, i \sim \text{Uniform}(1, d_2) \\
 Y &= \begin{cases} -1 & \text{if } X_2 = e_i \text{ for some } i < d_2/2 \\ +1 & \text{otherwise} \end{cases} \\
 X_1 &= \begin{cases} e_i, i \sim \text{Uniform}(1, 2) & \text{If } \tilde{x}_2 \neq 0 \\ f(X_2) & \text{Otherwise} \end{cases},
 \end{aligned} \tag{1}$$

where $f(X_2) = e_1$ if $X_2 = e_i$ for some $i < d_2/2$, and $f(X_2) = e_2$ otherwise¹. In this way, predicting Y solely based on the spurious feature X_1 can achieve accuracy $1 - \nu$.

We then inspect the effect of using different (ν, d_2) , the strength of spurious association between X_1 and Y and the difficulty of learning from X_2 . Since it is a linearly separable problem, we choose linear networks as our model. We draw training samples $([X_1; X_2], Y)$ pairs from the random process defined in 1. We use Adam optimization with learning rate 0.001 and the cross-entropy loss. In addition to single-layer linear networks, we also try over-parameterized 2-layer and 3-layer linear networks. The hidden size is [10, 32]. Since the task is linear separable and our model is also linear, we can check whether the learned weight can lead to 100% accuracy in the defined distribution. We check it every 25 iterations. We say a model has converged if it is 100% accurate for 5 consecutive checks. We report the number of the iterations required before it converges for different ν and d_2 .

Even though it is a linear-separable convex optimization problem, our results in Table 1 show that the strength of the spurious association can impact the number of iterations required to converge. We observe that when $\nu < 0.5$, the models tend to be trapped by the spurious feature, sticking at accuracy $1 - \nu$ for iterations. When the spurious relation between X_1 and Y is stronger, i.e. ν is smaller, the number of iterations required to converge is larger. In addition, the number of iterations is also larger when the d_2 is larger. An intuitive explanation is that the learning signal from X_2 is more sparse when d_2 is larger.

¹Uniform(a, b) is the uniform distribution over $\{n\}_{n=a}^b$.

3 A THEORETICAL EXPLANATION OF THE EFFICACY OF MLM PRETRAINING

3.1 $P(X_1|X_2)$ IS MORE INFORMATIVE THAN X_2

The toy example above motivates us to consider the information contained in $P(X_1|X_2)$. In the toy example, when predicting $P(Y = 0|X)$, if we simply output $P(X_1 = e_1|X_2)$, then the accuracy of our prediction of Y will be as high as predicting Y solely based on X_1 . It motivates us to inspect the reliability of the estimated $P(X_1|X_2)$ as a feature for the prediction of Y compared to X_1 . Let Π_1 be a $|\mathcal{X}_1|$ -dimensional random variable whose value is $P(X_1|X_2)$ ². We can prove that when $P(X_1|X_2)$ is estimated perfectly, Π_1 is at least as informative as X_1 .

Lemma 1. *When X_1, X_2 are discrete, if Π_1 perfect, namely the value of Π_1 is exactly $P(\cdot|X_2)$, then the mutual information $I(X_1; \Pi_1) = I(X_1; X_2)$. (Proof: Appendix A.1)*

Compared to previous works Hjelm et al. (2019); Belghazi et al. (2018); Oord et al. (2018); Kong et al. (2020) that show some self-supervised training objectives are lower bounds of the mutual information $I(X_1; X_2)$, we directly show that the output of the MLM, Π , maximizes the mutual information, since $I(X_1; f(X_2)) \leq I(X_1; X_2)$ for any f . Moreover, instead of explaining the efficacy of pretraining with the infomax principle Linsker (1988); Bell & Sejnowski (1995), our theories below provide a different perspective.

Theorem 1. *If Π is perfect,*

$$I(\Pi; Y) \geq I(X_1; Y) \quad (2)$$

Proof. Since Π is perfect, by Lemma 1, we have

$$I(X_1; X_2) = I(X_1; \Pi). \quad (3)$$

By data processing inequality, Equation 3 implies $I(X_1; X_2|\Pi) = 0$. By Assumption 3, a deterministic mapping $f_{X_2 \rightarrow Y}$ from X_2 to Y exists. Applying data processing inequality again, we have

$$I(X_1, X_2|\Pi) \geq I(X_1, f_{X_2 \rightarrow Y}(X_2)|\Pi) = I(X_1, Y|\Pi) \geq 0, \quad (4)$$

which implies $I(Y, X_1|\Pi) = 0$. Accordingly,

$$H(Y|\Pi) = H(Y|X_1, \Pi) \leq H(Y|X_1) \quad (5)$$

□

Theorem 1 shows that Π is a more informative feature than X_1 . However, a model does not necessarily rely more on a more informative feature if it is not easy. We will discuss more in the next section.

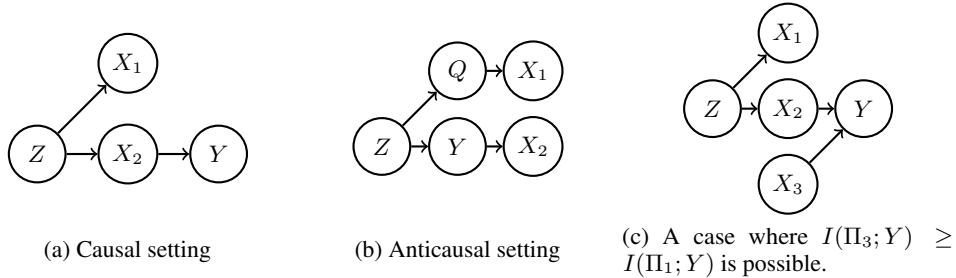
3.2 LEARNING FROM Π IS EASY

It is important that learning from Π is easy. Because of simplicity bias, a neural network model is likely to rely on the easy-to-learn features Shah et al. (2020); Kalimeris et al. (2019). We conjecture that a model excessively relies on the spurious feature X_1 when learning from X_1 is easier than learning from the robust feature X_2 . If learning from Π is easy, then the model will rely on Π more and thus will rely on X_1 less. However, features with higher mutual information to Y are not necessarily easy to learn. For instance, although X_2 is more informative, models tend to rely on X_1 instead of X_2 at the beginning of the training process. To show that MLM can mitigate the issue brought by simplicity bias, we need to show learning from Π is easy.

Therefore, we have the following theorem that implies learning from Π is at least as easy as learning from X_1 :

Theorem 2. *Let $\tilde{h}_{X_1}^{(D_n)} : \mathcal{X}_1 \rightarrow \mathcal{Y}$ be the classifier trained with MLE loss using n data pairs $(x_1^{(1)}, y^{(1)}), (x_1^{(2)}, y^{(2)}), \dots, (x_1^{(n)}, y^{(n)})$, and the converged classifier be $\tilde{h}_{X_1}^*$. There exists a learning*

²We will omit the subscript of Π_1 when there is no ambiguity.

Figure 2: The causal settings of the (X, Y) pairs.

	Ours	Wei et al. (2021)
structural assumption	X, Y follow Figure 2b.	X, Y follow an HMM.
linear independence assum.	$\{P(X_1 y) y \in \mathcal{Y}\}$	$\{P(X_0 H_0 = h) h \in \mathcal{H}\}$
implication	$I(P(X_1 X_2); Y) = I(X_2; Y)$	$I(P(H_0 X); Y) = I(X; Y)$

Table 2: Comparison between Theorem 4 in this work and Theorem 3.3 in Wei et al. (2021).

algorithm, which generates $\tilde{h}_{\Pi}^{(D_n)} : \Pi \rightarrow \mathcal{Y}$ using $(\Pi_1, y^{(1)})$, $(\pi^{(2)}, y^{(2)})$, \dots , $(\pi^{(n)}, y^{(n)})$, such that the following three properties are satisfied: (1)

$$\mathbb{E} \left[D_{KL} \left[\tilde{h}_{\Pi}^{(D_n)} \parallel \tilde{h}_{\Pi}^* \right] \right] = O \left(\frac{1}{n} \right), \quad (6)$$

which is asymptotically at the same rate as $\mathbb{E} \left[D_{KL} \left[\tilde{h}_{X_1}^{(D_n)} \parallel \tilde{h}_{X_1}^* \right] \right]$. (2) Over the distribution of (X, Y) , the expected loss of the converged classifier \tilde{h}_{Π}^* is not greater than the expected loss of $\tilde{h}_{X_1}^*$. (3) \tilde{h}_{Π}^* is a linear model, whose input is Π . (Proof: Appendix A.2)

The remaining question is whether deep learning models used in common practices can perform at least as well as the algorithm in Theorem 2. Indeed, without any knowledge of deep learning models, it is impossible to theoretically prove that a model will necessarily rely on Π instead of X_1 . Therefore, in Section 4 and Section 5 we will empirically validate that our theorems are applicable in the real world scenarios.

3.3 EXTENDING WITH CAUSAL MODELS

We make a step further by relaxing Assumption 3. By treating X_1 as a confounder we can see how MLM pre-training is helpful in the causal and anticausal settings as in Kaushik et al. (2021).

Theorem 3. *Even if Assumption 3 is not true, Theorem 1 still holds if X_1, X_2, Y follow the causal setting in Figure 2a.*

Proof. By the structure of X_1, X_2, Y , inequality 4 holds even if the deterministic mapping $f_{X_2 \rightarrow Y}$ does not exist. \square

Theorem 4. *Assume that the set of vectors $\{P(X_1|Y = y)|y \in \mathcal{Y}\}$ is linear independent, and if X_1, X_2, Y follow the anticausal setting in Figure 2b, then $I(\Pi; Y) \geq I(X_2; Y)$.*

Proof. The assumption is a special case of the one in Lee et al. (2020), so similar techniques can be used: According to the structure of X_1, X_2, Y , we have

$$P(X_1|X_2) = \sum_y P(X_1|y)P(y|X_2). \quad (7)$$

Therefore, if $\{P(X_1|Y = y)|y \in \mathcal{Y}\}$ is linearly independent, $P(y|X_2)$ can be recovered from $\Pi = P(X_1|X_2)$. \square

Note that this theorem is very similar to Theorem 3.3 in Wei et al. (2021). However, the assumptions required in ours are weaker and more realistic, and the implication is very similar (Table 2): **(1) Structure assumption:** Wei et al. (2021) assumed that X is generated from a HMM process with hidden variables H_0, H_1, \dots , which is stronger assumption than our assumption that X_1, X_2 follow the anticausal setting. **(2) Independence assumption:** Wei et al. (2021) assumed that the vectors in $\{P(X_0|H_0 = h)|h \in \mathcal{H}\}$ need to be linearly independent. In comparison, we require only the independence in $\{P(X_1|Y = y)|y \in \mathcal{Y}\}$. Our assumption is more realistic because the number of hidden states $|\mathcal{H}|$ must be very large if X is generated from the HMM model, and $|\mathcal{Y}|$ tends to be much smaller than $|\mathcal{H}|$. For example, in binary classification cases, our assumption holds as long as $P(X_1)$ is not independent of $P(Y)$. **(3) Implication:** If we further assume that $I(X_2; Y) = I(X; Y)$, then we reach a similar conclusion that $P(Y|X)$ can be recovered from $\Pi = P(X_1|X_2)$ by applying a linear function.

3.4 LIMITATIONS OF OUR THEOREMS

Our theories do not ensure that Π_1 is the most informative feature to learn from. Consider tokens in a sentence $X = \langle X_1, X_2, \dots, X_L \rangle$ and let Π_i be the conditional probability $P(X_i|X \setminus X_i)$. A token with spurious association with the label can locate arbitrary position in the sentence, and its location is unknown during pretraining. That is, the pretrained model is able to generate Π_i for all i . Without loss of generality, assume X_1 is the spurious token. *It is possible that there exists some i such that $I(\Pi_1; Y) < I(\Pi_i; Y)$, and that Π_i is predicted relying on X_1 .* Concretely, here is an example for the causal setting with three features: X_3 is independent of X_1 and X_2 given Y (Figure 2c). Using the results in Theorem 4, there is a linear mapping that can recover $P(Y|X_1, X_2)$ from Π_3 . Therefore, it is possible that $I(\Pi_3; Y) > I(\Pi_1; Y)$ if $I(X_1, X_2; Y) > I(\Pi_1; Y)$ depending on the distribution of the data. We leave the study of $I(\Pi_i; Y)$ for future work.

Another limitation is that, in practice, NLP practitioners do not use the conditional probability predicted by the pretrained model. Instead, people stack a simple layer over the pretrained model, and fine-tune the whole model on downstream tasks. Regardless of this, we conjecture that the representation encoded by an MLM pretrained model still contains the information of $\{\Pi_i\}_{i=1}^n$ and thus is robust to spurious lexicon-level feature.

4 TOY EXAMPLE WITH A PRETRAINED MODEL

As the first step to close the gap between our theories and the real world, we repeat the toy experiments with pretraining. Before fitting the model with Y , we first pretrain the first layer to predict X_1 based on masked X . What we want to show is that, after pretraining, the representation encoded by the layer will have the equivalent role of Π even when the input is not masked.

Specifically, the experimental design is as follows: We use the two-layer and three-layer MLP architectures same as in Section 2. When pretraining, we mask X_1 in X by using $X' = [0, 0; X_2]$ as inputs. Let the output from the first linear layer as $Z = WX'$. The loss function is the cross-entropy between X_1 and the softmax over $[z_1, z_2]$. After pretraining, we fine-tune the pretrained model with $([X_1; X_2], Y)$ pairs, and report the average number of iterations required to converge for 25 different random seeds.

We want to eliminate the possibility that the faster convergence of the pretrained model is because of larger initial weights over X_1 . Therefore, after pretraining, we manually create a path from X_1 to Z . We do so by initializing the weights of the third and fourth row of W with $[k, -k, 0, \dots, 0]$ and $[-k, k, \dots, 0, 0]$ respectively, where k is the average of the absolute value of the weights in the pretrained part, i.e. the weights of the first two rows in W . In this way, the information from X_1 has the same scale as the pretrained representation $[Z_1, Z_2]$, and thus it can compete with $[Z_1, Z_2]$ fairly.

Table 1 shows that pretraining can always reduce the number of iterations required to converge when $\nu < 0.50$. The effect is more significant when d_2 is larger. It could be because of the higher sparsity of the learning signal from X_2 when d_2 is larger.

We further inspect how the importance over the inputs changes in the process of training. The importance can be inferred from the product of the linear layers. We observe that if the model is not pretrained, the **weights over X_1** grow faster than the **weights over X_2** at the beginning (the

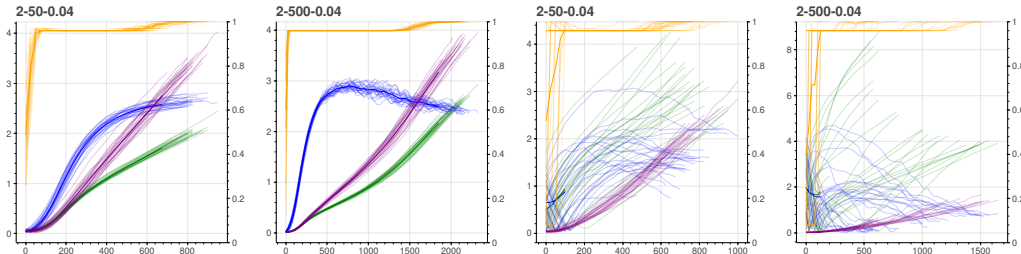


Figure 3: The average weights over the features during training a two-layer model. From left to right, $(d_2, \nu) = (50, 0.04), (500, 0.04), (50, 0.04), (500, 0.04)$. The two figures left/right side are the curves of model without and with pretraining respectively. Blue, green, purple curves represent the average weights over features in X_1 , X_2 , and \dot{X}_2 (the middle part of X_2) respectively. The orange curve represents the accuracy.

first row Figure 3). The model cannot converge to 100% accuracy until weights on \dot{X}_2 , the middle $[\nu \times d_2]$ dimensions of X_2 , become greater than the weights on X_1 . In addition, after the model converges, weights over X_1 is still greater than weights over X_2 . On the other hand, if the model is pretrained, weights over X_1 stop growing after a few steps (the second row in Figure 3). The above observations are aligned with our conjecture that the pretrained representation mitigates the robustness issue brought simplicity bias.

5 EXPERIMENTS

We experiment on real world NLP tasks to verify the relation between the capability of modeling the distribution of spurious features Π_1 and robustness. We facilitate datasets with known spurious features. We first pretrain models on the training dataset with different masking policies. One of them does not mask the spurious tokens, leading to the reduced capability of modeling Π_1 . Afterward, we fine-tune the models using the target label and evaluate their robustness on a testing set where the spurious association does not exist. Our results show that the models are less robust if spurious tokens are not masked during pretraining. This validates our theories that the capability of modeling the distribution of spurious features is important for the models’ robustness.

5.1 DOWSTREAM TASKS

Hate Speech Detection Previous study has shown that hate speech detection datasets tend to have lexical bias Dixon et al. (2018). That is, models rely excessively on the presence or the absence of certain words when predicting the label. Here we follow the formulation of lexical bias in hate speech detection proposed by Zhou et al. (2021). We focus on the effect of non-offensive minority identity (NOI) mentions, such as “woman”, “gay”, “black”. Those mentions are often highly associated with hateful instances. However, it is more desirable that a model does not rely on those mentions. Therefore, we can see the presence of NOI as a spurious feature.

Name Entity Recognition (NER) Lin et al. (2020) has shown that name entity recognition (NER) models perform worse when the name entities are not seen in the training data. In this case, we can see the content of the name entities as a spurious feature. Models may learn to memorize the name entities when fitting the training data, while we may desire the model to recognize name entities according to the context.

5.1.1 DATASETS

Hate Speech Detection We use a portion of the dataset proposed by Founta et al. (2018). In their original dataset, only a small number of hateful instances contain NOI. Our preliminary experiments show that the model without pretraining does not suffer much from the bias of NOI when training with the full data. Therefore, we create a dataset, whose positive (hateful) instances are all the positive samples in the original dataset that contain NOI. As for negative instances, we sample them randomly

Mask Policy	NER		Hate Speech Detection			
	Origin	Unseen	All (12893)		NOI (602)	
	F1 \uparrow	F1 \uparrow	Accuracy \uparrow	F1 \uparrow	Accuracy \uparrow	FPR \downarrow
scratch	61.5 0.5	38.7 0.6	83.9 1.6	80.3 1.4	74.8 1.5	46.3 7.2
vanilla	74.2 0.4	56.5 1.3	83.1 0.8	78.5 0.8	75.8 0.5	25.1 1.8
unmask random	72.7 0.6	56.5 0.8	83.3 1.1	78.9 1.1	75.8 0.9	25.7 2.3
unmask spurious	72.9 0.5	53.2 0.8	84.1 0.7	79.8 0.6	73.7 1.0	32.5 2.1
remove spurious	69.8 0.5	56.7 0.8	82.4 1.0	77.8 1.0	77.3 0.6	21.7 2.0

Table 3: The performance on downstream tasks. For the hate speech detection task, we also report false positive detection (FPR) on the NOI subset, which is a set of instances containing non-offensive minority identity mentions, e.g. “women”, “black”. The results are the average of 5 runs, and the smaller number is the standard deviation.

from the original training set. We control the number of negative instances so the ratio of positive and negative instances is the same as the original dataset. We create both the training and the validation splits in this way, and use the original full testing set for evaluation. We also evaluate the models on a NOI subset where all the instances contain NOI. Note that the testing set is from the real world, so the NOIs in the testing set do not spuriously associate with label as strong as in the training set.

NER We use the standard NER dataset Conll-2003 Tjong Kim Sang & De Meulder (2003). To create a testing set with name entities unseen in the training set, we replace the name entities in the original validation and testing splits with the entities from WNUT-17 Derczynski et al. (2017). Specifically, we replace the LOC, ORG, PER entities with the corresponding type of entities in WNUT-17, while the MISC entities remain untouched.

5.2 MASKING POLICIES

For each sentence with n_s spurious tokens, we experiment with different masking policies: **(1) scratch**: We do not pretrain the model before fine-tuning. **(2) vanilla**: During pretraining, we mask each token with 15% probability, which is same as the original implementation in Devlin et al. (2019). **(3) unmask random**: This is similar to vanilla MLM, but we uniformly randomly select n_s tokens from the whole sentence and unmask them if they have been masked. **(4) unmask spurious**: This is similar to vanilla MLM, but we unmask all the spurious tokens. **(5) remove spurious**: We replace spurious tokens with a special “[unk]” token, and we unmask them. Note that this setting can be seen as an oracle setting, since in most applications the spurious features are unknown.

We will inspect the effect of masking spurious tokens by comparing setting (3), (4), (5). Note that these three setting have the same expected number of masked tokens. Therefore, it rules out the possibility that their downstream performance differs because of the number of masked tokens.

5.3 IMPLEMENTATION DETAILS

For both of the tasks and all the MLM settings, including the *scratch setting*, we tokenize the input with the bert-base-uncased tokenizer. We use the bert-base-uncased architecture and also the pretrained embedding layer, which is frozen through the pretraining process. We use the existing token embedding to deal with the unseen tokens in the testing set, and this setting is commonly used before contextualized word embeddings were invented. We repeat each experiment 5 times. We include more details in Appendix A.4.

5.4 RESULT AND DISCUSSION

Results in Table 3 validate our theorems. For both of the tasks, *unmask random* performs better than *unmask spurious* under distribution shift. Specifically, *unmask random* has higher F1 on the unseen set of the NER task, and *unmask random* has a lower false positive rate (FPR) on the NOI set. Also, *unmask random* performs similarly to *vanilla*. This implies that modeling the condition distribution of spurious tokens in the original random masking pretraining can reduce models’ reliance on them.

Note that *unmask random* and *unmask spurious* have similar in-distribution performance, so the performance difference is not due to better in-distribution generalization suggested by Miller et al. (2021).

We also compare *unmask random* with the oracle setting *remove spurious*. We notice that even though *remove spurious* performs as well as *random*, *remove spurious* hurts the performance in the seen set. It indicates that modeling the conditional distribution of spurious tokens has effects beyond simply removing them from the model. On the other hand, *remove spurious* performs better in the hate speech detection task. A possible explanation is that NOI mentions contain little useful information for the task.

6 RELATED WORK

Recently, there are efforts attempting to explain the effectiveness of massive language modeling pretraining. Theoretically, Saunshi et al. (2021) explore why auto-regressive language models help solve downstream tasks. However, their explanation is based on the assumption that the downstream tasks are *natural tasks*, i.e. tasks that can be reformulated as sentence completion tasks. Their explanation also requires the pretrained language model to perform well for any sentence completion tasks, which is not likely to be true in the real world. Wei et al. (2021) analyze the effect of fine-tuning a pretrained MLM model. Nonetheless, they have stronger assumptions as described in Section A.4. Aghajanyan et al. (2020) show that pretrained models have lower intrinsic dimension, providing a generalization bound based on Arora et al. (2018). However, why pretrained models have lower intrinsic dimension is unknown. Merrill et al. (2021) show that the parameter norm growth during training makes transformer a saturated model, which can be described in terms of formal languages. Empirically, Zhang & Hashimoto (2021) show that the effectiveness of MLM pretraining cannot be explained by formulating the downstream tasks as sentence completion problems. Sinha et al. (2021) find evidence supporting the hypothesis that masked language models benefit from modeling high-order word co-occurrence instead of word order. There are also some theories explaining the efficacy of non-MLM pretraining Lee et al. (2020); Saunshi et al. (2019); Zhang & Stratos (2021).

Many of the previous studies on robust NLP focus on supervised learning Wang et al. (2021); Utama et al. (2020b;a); Karimi Mahabadi et al. (2020); Chang et al. (2020); He et al. (2019); Sagawa* et al. (2020); Kennedy et al. (2020); Chiang et al. (2020). However, without self-supervised learning, a model can impossibly extrapolate to out-of-distribution data when the domain shifts. Our work also complements previous studies that focus on the bias or robustness of a model generated by the pretraining process Kumar et al. (2020); Hawkins et al. (2020); Vargas & Cotterell (2020); Liu et al. (2020); Gonen & Goldberg (2019); Kurita et al. (2019); Zhao et al. (2019). In this work we investigate the pretraining process itself.

7 IMPLICATION AND CONCLUSION

Our results provide possible explanations for some common practices found effective empirically. First, it could explain why continuing pretraining on target dataset is useful Gururangan et al. (2020). It may be because continuing pretrained models model the distribution of spurious features in the target dataset better. Thus the model can better avoid the simplicity pitfall. Second, it provides reasons for more complex masking policies, such as masking continuous random spans Clark et al. (2020); Joshi et al. (2020). It may improve the robustness to spurious features that contain more than one token. Third, if MLM can alleviate the simplicity bias and help the model to achieve a greater margin, it may also imply that the model has wider optima, explaining the finding in Hao et al. (2019). On the other hand, a pretrained model’s capability of utilizing more features may also suggest that pretraining makes the decision boundary simpler.

In sum, we show a benefit of MLM pretraining, which partly explains its efficacy. We first empirically demonstrate the presence of simplicity bias when the input is discrete. We then theoretically and empirically explain how MLM pretraining can alleviate the problem brought by it. Finally, we close the gap between our theories and real-world practices with experiments on real-world NLP tasks. Our theories reveal a desirable mechanism of MLM pretraining, suggesting that reinforcing this mechanism could be a promising future research direction.

REFERENCES

- Armen Aghajanyan, Luke Zettlemoyer, and Sonal Gupta. Intrinsic dimensionality explains the effectiveness of language model fine-tuning. *arXiv preprint arXiv:2012.13255*, 2020.
- Sanjeev Arora, Rong Ge, Behnam Neyshabur, and Yi Zhang. Stronger generalization bounds for deep nets via a compression approach. In *International Conference on Machine Learning*, pp. 254–263. PMLR, 2018.
- Mohamed Ishmael Belghazi, Aristide Baratin, Sai Rajeshwar, Sherjil Ozair, Yoshua Bengio, Aaron Courville, and Devon Hjelm. Mutual information neural estimation. In Jennifer Dy and Andreas Krause (eds.), *Proceedings of the 35th International Conference on Machine Learning*, volume 80 of *Proceedings of Machine Learning Research*, pp. 531–540. PMLR, 10–15 Jul 2018. URL <https://proceedings.mlr.press/v80/belghazi18a.html>.
- Anthony J Bell and Terrence J Sejnowski. An information-maximization approach to blind separation and blind deconvolution. *Neural computation*, 7(6):1129–1159, 1995.
- Shiyu Chang, Yang Zhang, Mo Yu, and Tommi Jaakkola. Invariant rationalization. In *International Conference on Machine Learning*, pp. 1448–1458. PMLR, 2020.
- Ting-Rui Chiang, Hao-Tong Ye, and Yun-Nung Chen. An empirical study of content understanding in conversational question answering. In *Proceedings of the AAAI Conference on Artificial Intelligence*, volume 34, pp. 7578–7585, 2020.
- Kevin Clark, Minh-Thang Luong, Quoc V. Le, and Christopher D. Manning. Electra: Pre-training text encoders as discriminators rather than generators. *ArXiv*, abs/2003.10555, 2020.
- Leon Derczynski, Eric Nichols, Marieke van Erp, and Nut Limsopatham. Results of the WNUT2017 shared task on novel and emerging entity recognition. In *Proceedings of the 3rd Workshop on Noisy User-generated Text*, pp. 140–147, Copenhagen, Denmark, September 2017. Association for Computational Linguistics. doi: 10.18653/v1/W17-4418. URL <https://aclanthology.org/W17-4418>.
- Jacob Devlin, Ming-Wei Chang, Kenton Lee, and Kristina Toutanova. BERT: Pre-training of deep bidirectional transformers for language understanding. In *Proceedings of the 2019 Conference of the North American Chapter of the Association for Computational Linguistics: Human Language Technologies, Volume 1 (Long and Short Papers)*, pp. 4171–4186, Minneapolis, Minnesota, June 2019. Association for Computational Linguistics. doi: 10.18653/v1/N19-1423. URL <https://aclanthology.org/N19-1423>.
- Lucas Dixon, John Li, Jeffrey Sorensen, Nithum Thain, and Lucy Vasserman. Measuring and mitigating unintended bias in text classification. In *Proceedings of the 2018 AAAI/ACM Conference on AI, Ethics, and Society*, pp. 67–73, 2018.
- Antigoni Maria Founta, Constantinos Djouvas, Despoina Chatzakou, Ilias Leontiadis, Jeremy Blackburn, Gianluca Stringhini, Athena Vakali, Michael Sirivianos, and Nicolas Kourtellis. Large scale crowdsourcing and characterization of twitter abusive behavior. In *Twelfth International AAAI Conference on Web and Social Media*, 2018.
- Matt Gardner, William Merrill, Jesse Dodge, Matthew Peters, Alexis Ross, Sameer Singh, and Noah A. Smith. Competency problems: On finding and removing artifacts in language data. In *Proceedings of the 2021 Conference on Empirical Methods in Natural Language Processing*, pp. 1801–1813, Online and Punta Cana, Dominican Republic, November 2021. Association for Computational Linguistics. URL <https://aclanthology.org/2021.emnlp-main.135>.
- Alison L. Gibbs and Francis Edward Su. On choosing and bounding probability metrics. *International Statistical Review*, 70(3):419–435, 2002. doi: <https://doi.org/10.1111/j.1751-5823.2002.tb00178.x>. URL <https://onlinelibrary.wiley.com/doi/abs/10.1111/j.1751-5823.2002.tb00178.x>.

- Hila Gonen and Yoav Goldberg. Lipstick on a pig: Debiasing methods cover up systematic gender biases in word embeddings but do not remove them. In *Proceedings of the 2019 Conference of the North American Chapter of the Association for Computational Linguistics: Human Language Technologies, Volume 1 (Long and Short Papers)*, pp. 609–614, Minneapolis, Minnesota, June 2019. Association for Computational Linguistics. doi: 10.18653/v1/N19-1061. URL <https://aclanthology.org/N19-1061>.
- Suchin Gururangan, Ana Marasović, Swabha Swayamdipta, Kyle Lo, Iz Beltagy, Doug Downey, and Noah A. Smith. Don’t stop pretraining: Adapt language models to domains and tasks. In *Proceedings of the 58th Annual Meeting of the Association for Computational Linguistics*, pp. 8342–8360, Online, July 2020. Association for Computational Linguistics. doi: 10.18653/v1/2020.acl-main.740. URL <https://aclanthology.org/2020.acl-main.740>.
- Yaru Hao, Li Dong, Furu Wei, and Ke Xu. Visualizing and understanding the effectiveness of BERT. In *Proceedings of the 2019 Conference on Empirical Methods in Natural Language Processing and the 9th International Joint Conference on Natural Language Processing (EMNLP-IJCNLP)*, pp. 4143–4152, Hong Kong, China, November 2019. Association for Computational Linguistics. doi: 10.18653/v1/D19-1424. URL <https://aclanthology.org/D19-1424>.
- Robert Hawkins, Takateru Yamakoshi, Thomas Griffiths, and Adele Goldberg. Investigating representations of verb bias in neural language models. In *Proceedings of the 2020 Conference on Empirical Methods in Natural Language Processing (EMNLP)*, pp. 4653–4663, Online, November 2020. Association for Computational Linguistics. doi: 10.18653/v1/2020.emnlp-main.376. URL <https://aclanthology.org/2020.emnlp-main.376>.
- He He, Sheng Zha, and Haohan Wang. Unlearn dataset bias in natural language inference by fitting the residual. In *Proceedings of the 2nd Workshop on Deep Learning Approaches for Low-Resource NLP (DeepLo 2019)*, pp. 132–142, Hong Kong, China, November 2019. Association for Computational Linguistics. doi: 10.18653/v1/D19-6115. URL <https://aclanthology.org/D19-6115>.
- Dan Hendrycks, Xiaoyuan Liu, Eric Wallace, Adam Dziedzic, Rishabh Krishnan, and Dawn Song. Pretrained transformers improve out-of-distribution robustness. In *Proceedings of the 58th Annual Meeting of the Association for Computational Linguistics*, pp. 2744–2751, Online, July 2020. Association for Computational Linguistics. doi: 10.18653/v1/2020.acl-main.244. URL <https://aclanthology.org/2020.acl-main.244>.
- R Devon Hjelm, Alex Fedorov, Samuel Lavoie-Marchildon, Karan Grewal, Phil Bachman, Adam Trischler, and Yoshua Bengio. Learning deep representations by mutual information estimation and maximization. In *International Conference on Learning Representations*, 2019. URL <https://openreview.net/forum?id=Bklr3j0cKX>.
- Mandar Joshi, Danqi Chen, Yinhan Liu, Daniel Weld, Luke Zettlemoyer, and Omer Levy. Spanbert: Improving pre-training by representing and predicting spans. *Transactions of the Association for Computational Linguistics*, 8(0):64–77, 2020. ISSN 2307-387X. URL <https://transacl.org/ojs/index.php/tacl/article/view/1853>.
- Dimitris Kalimeris, Gal Kaplun, Preetum Nakkiran, Benjamin Edelman, Tristan Yang, Boaz Barak, and Haofeng Zhang. Sgd on neural networks learns functions of increasing complexity. *Advances in Neural Information Processing Systems*, 32:3496–3506, 2019.
- Rabeeh Karimi Mahabadi, Yonatan Belinkov, and James Henderson. End-to-end bias mitigation by modelling biases in corpora. In *Proceedings of the 58th Annual Meeting of the Association for Computational Linguistics*, pp. 8706–8716, Online, July 2020. Association for Computational Linguistics. doi: 10.18653/v1/2020.acl-main.769. URL <https://aclanthology.org/2020.acl-main.769>.
- Divyansh Kaushik, Amrith Setlur, Eduard H Hovy, and Zachary Chase Lipton. Explaining the efficacy of counterfactually augmented data. In *International Conference on Learning Representations*, 2021. URL <https://openreview.net/forum?id=HHiiQKWsOcV>.
- Brendan Kennedy, Xisen Jin, Aida Mostafazadeh Davani, Morteza Dehghani, and Xiang Ren. Contextualizing hate speech classifiers with post-hoc explanation. In *Proceedings of the 58th*

- Annual Meeting of the Association for Computational Linguistics*, pp. 5435–5442, Online, July 2020. Association for Computational Linguistics. doi: 10.18653/v1/2020.acl-main.483. URL <https://aclanthology.org/2020.acl-main.483>.
- Lingpeng Kong, Cyprien de Masson d’Autume, Lei Yu, Wang Ling, Zihang Dai, and Dani Yogatama. A mutual information maximization perspective of language representation learning. In *International Conference on Learning Representations*, 2020. URL <https://openreview.net/forum?id=Syx79eBKwr>.
- Vaibhav Kumar, Tenzin Singhay Bhotia, Vaibhav Kumar, and Tanmoy Chakraborty. Nurse is closer to woman than surgeon? mitigating gender-biased proximities in word embeddings. *Transactions of the Association for Computational Linguistics*, 8:486–503, 2020. doi: 10.1162/tacl.a.00327. URL <https://aclanthology.org/2020.tacl-1.32>.
- Keita Kurita, Nidhi Vyas, Ayush Pareek, Alan W Black, and Yulia Tsvetkov. Measuring bias in contextualized word representations. In *Proceedings of the First Workshop on Gender Bias in Natural Language Processing*, pp. 166–172, Florence, Italy, August 2019. Association for Computational Linguistics. doi: 10.18653/v1/W19-3823. URL <https://aclanthology.org/W19-3823>.
- Jason D Lee, Qi Lei, Nikunj Saunshi, and Jiacheng Zhuo. Predicting what you already know helps: Provable self-supervised learning. *arXiv preprint arXiv:2008.01064*, 2020.
- Hongyu Lin, Yaojie Lu, Jialong Tang, Xianpei Han, Le Sun, Zhicheng Wei, and Nicholas Jing Yuan. A rigorous study on named entity recognition: Can fine-tuning pretrained model lead to the promised land? In *Proceedings of the 2020 Conference on Empirical Methods in Natural Language Processing (EMNLP)*, pp. 7291–7300, Online, November 2020. Association for Computational Linguistics. doi: 10.18653/v1/2020.emnlp-main.592. URL <https://aclanthology.org/2020.emnlp-main.592>.
- R. Linsker. Self-organization in a perceptual network. *Computer*, 21(3):105–117, 1988. doi: 10.1109/2.36.
- Haochen Liu, Wentao Wang, Yiqi Wang, Hui Liu, Zitao Liu, and Jiliang Tang. Mitigating gender bias for neural dialogue generation with adversarial learning. In *Proceedings of the 2020 Conference on Empirical Methods in Natural Language Processing (EMNLP)*, pp. 893–903, Online, November 2020. Association for Computational Linguistics. doi: 10.18653/v1/2020.emnlp-main.64. URL <https://aclanthology.org/2020.emnlp-main.64>.
- Yinhan Liu, Myle Ott, Naman Goyal, Jingfei Du, Mandar Joshi, Danqi Chen, Omer Levy, Mike Lewis, Luke Zettlemoyer, and Veselin Stoyanov. Roberta: A robustly optimized bert pretraining approach. *arXiv preprint arXiv:1907.11692*, 2019.
- Charles Lovering, Rohan Jha, Tal Linzen, and Ellie Pavlick. Predicting inductive biases of pre-trained models. In *International Conference on Learning Representations*, 2021. URL <https://openreview.net/forum?id=mNtmhaDKAr>.
- William Merrill, Vivek Ramanujan, Yoav Goldberg, Roy Schwartz, and Noah A. Smith. Effects of parameter norm growth during transformer training: Inductive bias from gradient descent. In *Proceedings of the 2021 Conference on Empirical Methods in Natural Language Processing*, pp. 1766–1781, Online and Punta Cana, Dominican Republic, November 2021. Association for Computational Linguistics. URL <https://aclanthology.org/2021.emnlp-main.133>.
- Tomas Mikolov, Kai Chen, Gregory S. Corrado, and Jeffrey Dean. Efficient estimation of word representations in vector space. In *ICLR*, 2013.
- John P Miller, Rohan Taori, Aditi Raghunathan, Shiori Sagawa, Pang Wei Koh, Vaishal Shankar, Percy Liang, Yair Carmon, and Ludwig Schmidt. Accuracy on the line: on the strong correlation between out-of-distribution and in-distribution generalization. In *International Conference on Machine Learning*, pp. 7721–7735. PMLR, 2021.

- Aaron van den Oord, Yazhe Li, and Oriol Vinyals. Representation learning with contrastive predictive coding. *arXiv preprint arXiv:1807.03748*, 2018.
- Liam Paninski. Estimation of entropy and mutual information. *Neural Comput.*, 15(6):1191–1253, June 2003. ISSN 0899-7667. doi: 10.1162/089976603321780272. URL <https://doi.org/10.1162/089976603321780272>.
- Shiori Sagawa*, Pang Wei Koh*, Tatsunori B. Hashimoto, and Percy Liang. Distributionally robust neural networks. In *International Conference on Learning Representations*, 2020. URL <https://openreview.net/forum?id=ryxGuJrFvS>.
- Nikunj Saunshi, Orestis Plevrakis, Sanjeev Arora, Mikhail Khodak, and Hrishikesh Khandeparkar. A theoretical analysis of contrastive unsupervised representation learning. In Kamalika Chaudhuri and Ruslan Salakhutdinov (eds.), *Proceedings of the 36th International Conference on Machine Learning*, volume 97 of *Proceedings of Machine Learning Research*, pp. 5628–5637. PMLR, 09–15 Jun 2019. URL <https://proceedings.mlr.press/v97/saunshi19a.html>.
- Nikunj Saunshi, Sadhika Malladi, and Sanjeev Arora. A mathematical exploration of why language models help solve downstream tasks. In *International Conference on Learning Representations*, 2021. URL <https://openreview.net/forum?id=vVjIW3sEclS>.
- Harshay Shah, Kaustav Tamuly, Aditi Raghunathan, Prateek Jain, and Praneeth Netrapalli. The pitfalls of simplicity bias in neural networks. In *NeurIPS*, 2020.
- Koustuv Sinha, Robin Jia, Dieuwke Hupkes, Joelle Pineau, Adina Williams, and Douwe Kiela. Masked language modeling and the distributional hypothesis: Order word matters pre-training for little. *arXiv preprint arXiv:2104.06644*, 2021.
- Erik F. Tjong Kim Sang and Fien De Meulder. Introduction to the CoNLL-2003 shared task: Language-independent named entity recognition. In *Proceedings of the Seventh Conference on Natural Language Learning at HLT-NAACL 2003*, pp. 142–147, 2003. URL <https://aclanthology.org/W03-0419>.
- Lifu Tu, Garima Lalwani, Spandana Gella, and He He. An empirical study on robustness to spurious correlations using pre-trained language models. *Transactions of the Association for Computational Linguistics*, 8:621–633, 2020. doi: 10.1162/tacl.a.00335. URL <https://aclanthology.org/2020.tacl-1.40>.
- Prasetya Ajie Utama, Nafise Sadat Moosavi, and Iryna Gurevych. Mind the trade-off: Debiasing NLU models without degrading the in-distribution performance. In *Proceedings of the 58th Annual Meeting of the Association for Computational Linguistics*, pp. 8717–8729, Online, July 2020a. Association for Computational Linguistics. doi: 10.18653/v1/2020.acl-main.770. URL <https://aclanthology.org/2020.acl-main.770>.
- Prasetya Ajie Utama, Nafise Sadat Moosavi, and Iryna Gurevych. Towards debiasing NLU models from unknown biases. In *Proceedings of the 2020 Conference on Empirical Methods in Natural Language Processing (EMNLP)*, pp. 7597–7610, Online, November 2020b. Association for Computational Linguistics. doi: 10.18653/v1/2020.emnlp-main.613. URL <https://aclanthology.org/2020.emnlp-main.613>.
- Francisco Vargas and Ryan Cotterell. Exploring the linear subspace hypothesis in gender bias mitigation. In *Proceedings of the 2020 Conference on Empirical Methods in Natural Language Processing (EMNLP)*, pp. 2902–2913, Online, November 2020. Association for Computational Linguistics. doi: 10.18653/v1/2020.emnlp-main.232. URL <https://aclanthology.org/2020.emnlp-main.232>.
- Liwen Wang, Yuanmeng Yan, Keqing He, Yanan Wu, and Weiran Xu. Dynamically disentangling social bias from task-oriented representations with adversarial attack. In *Proceedings of the 2021 Conference of the North American Chapter of the Association for Computational Linguistics: Human Language Technologies*, pp. 3740–3750, Online, June 2021. Association for Computational Linguistics. doi: 10.18653/v1/2021.naacl-main.293. URL <https://aclanthology.org/2021.naacl-main.293>.

- Colin Wei, Sang Michael Xie, and Tengyu Ma. Why do pretrained language models help in downstream tasks? an analysis of head and prompt tuning. *arXiv preprint arXiv:2106.09226*, 2021.
- Tianyi Zhang and Tatsunori B. Hashimoto. On the inductive bias of masked language modeling: From statistical to syntactic dependencies. In *Proceedings of the 2021 Conference of the North American Chapter of the Association for Computational Linguistics: Human Language Technologies*, pp. 5131–5146, Online, June 2021. Association for Computational Linguistics. doi: 10.18653/v1/2021.naacl-main.404. URL <https://aclanthology.org/2021.naacl-main.404>.
- Wenzheng Zhang and Karl Stratos. Understanding hard negatives in noise contrastive estimation. In *Proceedings of the 2021 Conference of the North American Chapter of the Association for Computational Linguistics: Human Language Technologies*, pp. 1090–1101, Online, June 2021. Association for Computational Linguistics. doi: 10.18653/v1/2021.naacl-main.86. URL <https://aclanthology.org/2021.naacl-main.86>.
- Jieyu Zhao, Tianlu Wang, Mark Yatskar, Ryan Cotterell, Vicente Ordonez, and Kai-Wei Chang. Gender bias in contextualized word embeddings. In *Proceedings of the 2019 Conference of the North American Chapter of the Association for Computational Linguistics: Human Language Technologies, Volume 1 (Long and Short Papers)*, pp. 629–634, Minneapolis, Minnesota, June 2019. Association for Computational Linguistics. doi: 10.18653/v1/N19-1064. URL <https://aclanthology.org/N19-1064>.
- Xuhui Zhou, Maarten Sap, Swabha Swayamdipta, Yejin Choi, and Noah Smith. Challenges in automated debiasing for toxic language detection. In *Proceedings of the 16th Conference of the European Chapter of the Association for Computational Linguistics: Main Volume*, pp. 3143–3155, Online, April 2021. Association for Computational Linguistics. URL <https://aclanthology.org/2021.eacl-main.274>.