
CORL: Research-oriented Deep Offline Reinforcement Learning Library

Denis Tarasov Tinkoff den.tarasov@tinkoff.ai	Alexander Nikulin Tinkoff a.p.nikulin@tinkoff.ai	Dmitry Akimov Tinkoff d.akimov@tinkoff.ai
Vladislav Kurenkov Tinkoff v.kurenkov@tinkoff.ai	Sergey Kolesnikov Tinkoff s.s.kolesnikov@tinkoff.ai	

Abstract

CORL¹ is an open-source library that provides thoroughly benchmarked single-file implementations of both deep offline and offline-to-online reinforcement learning algorithms. It emphasizes a simple developing experience with a straightforward codebase and a modern analysis tracking tool. In CORL, we isolate methods implementation into separate single files, making performance-relevant details easier to recognize. Additionally, an experiment tracking feature is available to help log metrics, hyperparameters, dependencies, and more to the cloud. Finally, we have ensured the reliability of the implementations by benchmarking commonly employed D4RL datasets providing a transparent source of results that can be reused for robust evaluation tools such as performance profiles, probability of improvement, or expected online performance.

1 Introduction

Deep Offline Reinforcement Learning (Levine et al., 2020) has been showing significant advancements in numerous domains such as robotics (Smith et al., 2022; Kumar et al., 2021), autonomous driving (Diehl et al., 2021) and recommender systems (Chen et al., 2022). Due to such rapid development, many open-source offline RL solutions² emerged to help RL practitioners understand and improve well-known offline RL techniques in different fields. On the one hand, they introduce offline RL algorithms standard interfaces and user-friendly APIs, simplifying offline RL methods incorporation into *existing* projects. On the other hand, introduced abstractions may hinder the learning curve for newcomers and the ease of adoption for researchers interested in developing *new* algorithms. One needs to understand the modularity design (several files on average), which (1) can be comprised of thousands of lines of code or (2) can hardly fit for a novel method³.

In this technical report, we take a different perspective on an offline RL library and also incorporate emerging interest in the offline-to-online setup. We propose CORL (Clean Offline Reinforcement Learning) – minimalistic and isolated single-file implementations of deep offline and offline-to-online RL algorithms, supported by open-sourced D4RL (Fu et al., 2020) benchmark results. The uncomplicated design allows practitioners to read and understand the implementations of the algorithms straightforwardly. Moreover, CORL supports optional integration with experiments tracking tools such as Weights&Biases (Biewald, 2020), providing practitioners with a convenient way to analyze

¹CORL Repository: <https://github.com/corl-team/CORL>

²<https://github.com/hanjuku-kaso/awesome-offline-rl#oss>

³<https://github.com/takuseno/d3rlpy/issues/141>

the results and behavior of all algorithms, not merely relying on a final performance commonly reported in papers.

We hope that the CORL library will help offline RL newcomers study implemented algorithms and aid the researchers in quickly modifying existing methods without fighting through different levels of abstraction. Finally, the obtained results may serve as a reference point for D4RL benchmarks avoiding the need to re-implement and tune existing algorithms' hyperparameters.

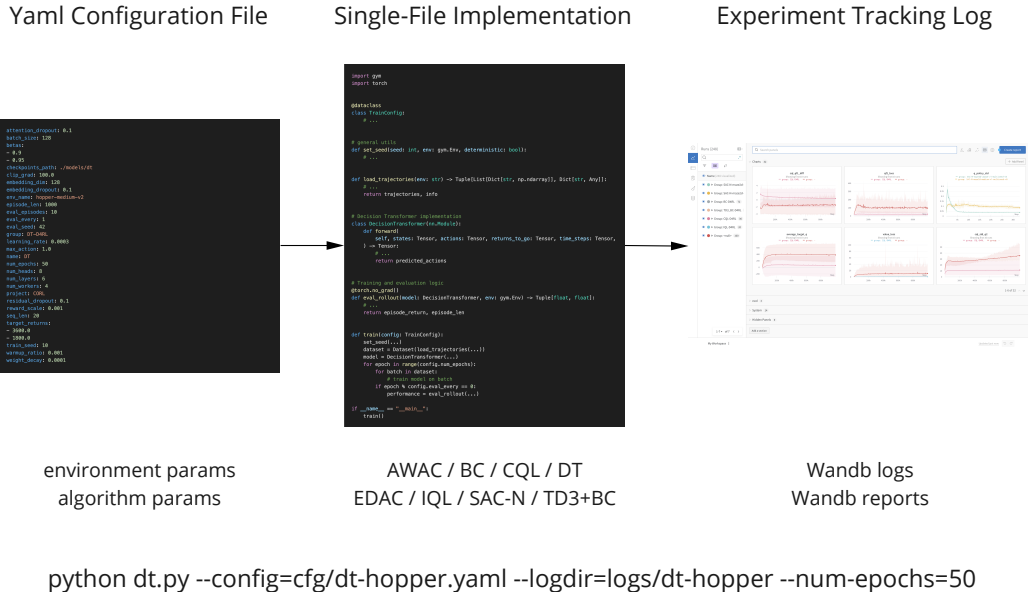


Figure 1: The illustration of the CORL library design. Single-file implementation takes a yaml configuration file with both environment and algorithm parameters to run the experiment, which logs all required statistics to Weights&Biases (Biewald, 2020).

2 Related Work

Since the Atari breakthrough (Mnih et al., 2015), numerous open-source RL frameworks and libraries have been developed over the last years: (Dhariwal et al., 2017; Hill et al., 2018; Castro et al., 2018; Gauci et al., 2018; Keng & Graesser, 2017; garage contributors, 2019; Duan et al., 2016; Kolesnikov & Hrinchuk, 2019; Fujita et al., 2021; Liang et al., 2018; Fujita et al., 2021; Liu et al., 2021; Huang et al., 2021; Weng et al., 2021; Stooke & Abbeel, 2019), focusing on different perspectives of the RL. For example, stable-baselines (Hill et al., 2018) provides many deep RL implementations that carefully reproduce results to back up RL practitioners with reliable baselines during methods comparison. On the other hand, Ray (Liang et al., 2018) focuses on implementations scalability and production-friendly usage. Finally, more nuanced solutions exist, such as Dopamine (Castro et al., 2018), which emphasizes different DQN variants, or ReAgent (Gauci et al., 2018), which applies RL to the RecSys domain.

At the same time, the offline RL branch and especially offline-to-online, which we are interested in this paper, are not yet covered as much: the only library that precisely focuses on offline RL setting is d3rlpy (Takuma Seno, 2021). While CORL also focuses on offline RL methods (Nair et al., 2020; Kumar et al., 2020; Kostrikov et al., 2021; Fujimoto & Gu, 2021; An et al., 2021; Chen et al., 2021), similar to d3rlpy, it takes a different perspective on library design and provides *non-modular* independent algorithms implementations. More precisely, CORL does not introduce additional abstractions to make offline RL more general but instead gives an "easy-to-hack" starter kit for research needs. Finally, CORL also provides recent offline-to-online solutions (Nair et al., 2020; Kumar et al., 2020; Kostrikov et al., 2021; Wu et al., 2022; Nakamoto et al., 2023; Tarasov et al., 2023) that are gaining interest among researchers and practitioners.

Although CORL does not represent the first non-modular RL library, which is more likely the CleanRL (Huang et al., 2021) case, it has two significant differences from its predecessor. First, CORL is focused on *offline* and *offline-to-online* RL, while CleanRL implements *online* RL algorithms. Second, CORL intends to minimize the complexity of the requirements and external dependencies. To be more concrete, CORL does not have additional requirements with abstractions such as *stable-baselines* (Hill et al., 2018) or *envpool* (Weng et al., 2022) but instead implements everything from scratch in the codebase.

3 CORL Design

Single-File Implementations

Implementational subtleties significantly impact agent performance in deep RL (Henderson et al., 2018; Engstrom et al., 2020; Fujimoto & Gu, 2021). Unfortunately, user-friendly abstractions and general interfaces, the core idea behind modular libraries, encapsulate and often hide these important nuances from the practitioners. For such a reason, CORL unwraps these details by adopting single-file implementations. To be more concrete, we put environment details, algorithms hyperparameters, and evaluation parameters into a single file⁴. For example, we provide

- *any_percent_bc.py* (404 LOC⁵) as a baseline algorithm for offline RL methods comparison,
- *td3_bc.py* (511 LOC) as a competitive minimalistic offline RL algorithm (Fujimoto & Gu, 2021),
- *dt.py* (540 LOC) as an example of the recently proposed trajectory optimization approach (Chen et al., 2021)

Figure 1 depicts an overall library design. To avoid over-complicated offline implementations, we treat offline and offline-to-online versions of the same algorithms separately. While such design produces code duplications among realization, it has several essential benefits from the both educational and research perspective:

- **Smooth learning curve.** Having the entire code in one place makes understanding all its aspects more straightforward. In other words, one may find it easier to dive into 540 LOC of single-file Decision Transformer (Chen et al., 2021) implementation rather than 10+ files of the original implementation⁶.
- **Simple prototyping.** As we are not interested in the code’s general applicability, we could make it implementation-specific. Such a design also removes the need for inheritance from general primitives or their refactoring, reducing abstraction overhead to zero. At the same time, this idea gives us complete freedom during code modification.
- **Faster debugging.** Without additional abstractions, implementation simplifies to a single for-loop with a global Python name scope. Furthermore, such flat architecture makes accessing and inspecting any created variable easier during training, which is crucial in the presence of modifications and debugging.

Configuration files

Although it is a typical pattern to use a command line interface (CLI) for single-file experiments in the research community, CORL slightly improves it with predefined configuration files. Utilizing YAML parsing through CLI, for each experiment, we gather all environment and algorithm hyperparameters into such files so that one can use them as an initial setup. We found that such setup (1) simplifies experiments, eliminating the need to keep all algorithm-environment-specific parameters in mind, and (2) keeps it convenient with the familiar CLI approach.

⁴We follow the PEP8 style guide with a maximum line length of 89, which increases LOC a bit.

⁵Lines Of Code

⁶Original Decision Transformer implementation: <https://github.com/kzl/decision-transformer>

Experiment Tracking

Offline RL evaluation is another challenging aspect of the current offline RL state (Kurenkov & Kolesnikov, 2022). To face this uncertainty, CORL supports integration with Weights&Biases (Biewald, 2020), a modern experiment tracking tool. With each experiment, CORL automatically saves (1) source code, (2) dependencies (requirements.txt), (3) hardware setup, (4) OS environment variables, (5) hyperparameters, (6) training, and system metrics, (7) logs (stdout, stderr). See Appendix B for an example.

Although, Weights&Biases is a proprietary solution, other alternatives, such as Tensorboard (Abadi et al., 2015) or Aim (Arakelyan et al., 2020), could be used within a few lines of code change. It is also important to note that with Weights&Biases tracking, one could easily use CORL with sweeps or public reports.

We found full metrics tracking during the training process necessary for two reasons. First, it removes the possible bias of the final or best performance commonly reported in papers. For example, one could evaluate offline RL performance as max archived score, while another uses the average scores over N (last) evaluations (Takuma Seno, 2021). Second, it provides an opportunity for advanced performance analysis such as EOP (Kurenkov & Kolesnikov, 2022) or RLiability (Agarwal et al., 2021). In short, when provided with all metrics logs, one can utilize all performance statistics, not merely relying on commonly used alternatives.

4 Benchmarking D4RL

4.1 Offline

In our library, we implemented the following offline algorithms: $N\%$ ⁷ Behavioral Cloning (BC), TD3 + BC (Fujimoto & Gu, 2021), CQL (Kumar et al., 2020), IQL (Kostrikov et al., 2021), AWAC (Nair et al., 2020), ReBRAC (Tarasov et al., 2023), SAC-N, EDAC (An et al., 2021), and Decision Transformer (DT) (Chen et al., 2021). We evaluated every algorithm on the D4RL benchmark (Fu et al., 2020), focusing on Gym-MuJoCo, Maze2D, AntMaze, and Adroit tasks. Each algorithm was run for one million gradient steps⁸ and evaluated using ten episodes for Gym-MuJoCo and Adroit tasks. For Maze2d, we use 100 evaluation episodes. In our experiments, we tried to rely on the hyperparameters proposed in the original works (see Appendix D for details) as much as possible.

The final performance is reported in Table 1 and the maximal performance in Table 2. The scores are normalized to the range between 0 and 100 (Fu et al., 2020). Following the recent work by Takuma Seno (2021), we report the last and best-obtained scores to illustrate each algorithm’s potential performance and overfitting properties. Figure 2 shows the performance profiles and probability of improvement of ReBRAC over other algorithms (Agarwal et al., 2021). See Appendix A for complete training performance graphs.

Based on these results, we make several valuable observations. First, ReBRAC, IQL and AWAC are the most competitive baselines in offline setup on average. Note that AWAC is often omitted in recent works.

Observation 1: ReBRAC, IQL and AWAC are the strongest offline baselines on average.

Second, EDAC outperforms all other algorithms on Gym-MuJoCo by a significant margin, and to our prior knowledge, there are still no algorithms that perform much better on these tasks. SAC-N shows the best performance on Maze2d tasks. However, simultaneously, SAC-N and EDAC cannot solve AntMaze tasks and perform poorly in the Adroit domain.

Observation 2: SAC-N and EDAC are the strongest baselines for Gym-MuJoCo and Maze2d, but they perform poorly on both AntMaze and Adroit domains.

Third, during our experiments, we observed that the hyperparameters proposed for CQL in Kumar et al. (2020) do not perform as well as claimed on most tasks. CQL is extremely sensitive to the

⁷ N is a percentage of best trajectories with the highest return used for training. We omit the percentage when it is equal to 100.

⁸Except SAC-N, EDAC, and DT due to their original hyperparameters. See Appendix D for details.

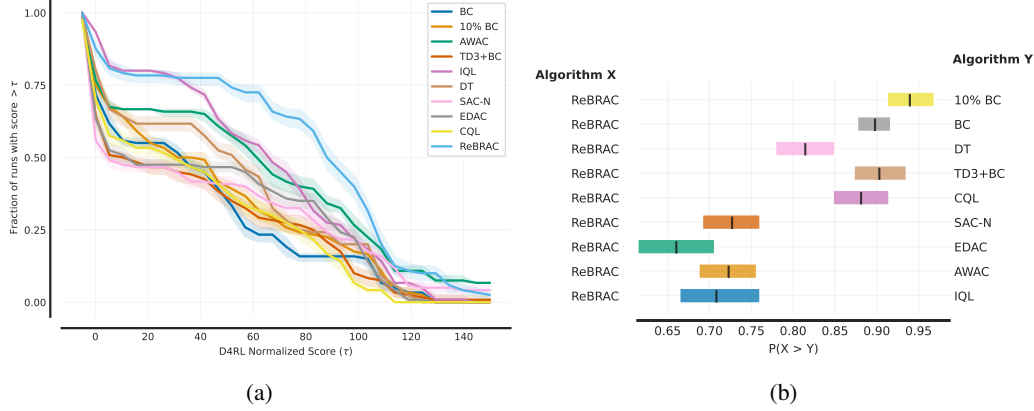


Figure 2: (a) Performance profiles after offline training (b) Probability of improvement of ReBRAC to other algorithms after offline training. The curves (Agarwal et al., 2021) are for D4RL benchmark spanning Gym-MuJoCo, Maze2d, AntMaze, and Adroit datasets.

Table 1: Normalized performance of the last trained policy on D4RL averaged over 4 random seeds.

Task Name	BC	BC-10%	TD3+BC	AWAC	CQL	IQL	ReBRAC	SAC-N	EDAC	DT
halfcheetah-medium-v2	42.40 ± 0.19	42.46 ± 0.70	48.10 ± 0.18	50.02 ± 0.27	47.04 ± 0.22	48.31 ± 0.22	64.04 ± 0.68	68.20 ± 1.28	67.70 ± 1.04	42.20 ± 0.26
halfcheetah-medium-replay-v2	35.66 ± 2.33	23.59 ± 6.95	44.84 ± 0.59	45.13 ± 0.88	45.04 ± 0.27	44.46 ± 0.22	51.18 ± 0.31	60.70 ± 1.01	62.06 ± 1.10	38.91 ± 0.50
halfcheetah-medium-expert-v2	55.95 ± 7.35	90.10 ± 2.45	90.78 ± 6.04	95.00 ± 0.61	95.63 ± 0.42	94.74 ± 0.52	103.80 ± 2.95	98.96 ± 9.31	104.76 ± 0.64	91.55 ± 0.95
hopper-medium-v2	53.51 ± 1.76	55.48 ± 7.30	60.37 ± 3.49	63.02 ± 4.56	59.08 ± 3.77	67.53 ± 3.78	102.29 ± 0.17	40.82 ± 9.91	101.70 ± 0.28	65.10 ± 1.61
hopper-medium-replay-v2	29.81 ± 2.07	70.42 ± 8.66	64.42 ± 21.52	98.88 ± 2.07	95.11 ± 5.27	97.43 ± 6.39	94.98 ± 6.53	100.33 ± 0.78	99.66 ± 0.81	81.77 ± 6.87
hopper-medium-expert-v2	52.30 ± 4.01	111.16 ± 1.03	101.17 ± 9.07	101.90 ± 6.22	99.26 ± 10.91	107.42 ± 7.80	109.45 ± 2.34	101.31 ± 11.63	105.19 ± 10.08	110.44 ± 0.33
walker2d-medium-v2	63.23 ± 16.24	67.34 ± 5.17	82.71 ± 4.78	68.52 ± 27.19	80.75 ± 3.28	80.91 ± 3.17	85.82 ± 0.77	87.47 ± 0.66	93.36 ± 1.38	67.63 ± 2.54
walker2d-medium-replay-v2	21.80 ± 10.15	54.35 ± 6.34	85.62 ± 4.01	80.62 ± 3.58	73.09 ± 13.22	82.15 ± 3.03	84.25 ± 2.25	78.99 ± 0.50	87.10 ± 2.78	59.86 ± 2.73
walker2d-medium-expert-v2	98.96 ± 15.98	108.70 ± 0.25	110.03 ± 0.36	111.44 ± 1.62	109.56 ± 0.39	111.72 ± 0.86	111.86 ± 0.43	114.93 ± 0.41	114.75 ± 0.74	107.11 ± 0.96
Gym-MuJoCo avg	50.40	69.29	76.45	79.39	78.28	81.63	89.74	83.52	92.92	73.84
maze2d-umaze-v1	0.36 ± 8.69	12.18 ± 4.29	29.41 ± 12.31	65.65 ± 5.34	-8.90 ± 6.11	42.11 ± 0.58	106.87 ± 22.16	130.59 ± 16.52	95.26 ± 6.39	18.08 ± 25.42
maze2d-medium-v1	0.79 ± 3.25	14.25 ± 2.33	59.45 ± 36.25	84.63 ± 35.54	86.11 ± 9.68	34.85 ± 2.72	105.11 ± 31.67	88.61 ± 18.72	57.04 ± 3.45	31.71 ± 26.33
maze2d-large-v1	2.26 ± 4.39	11.32 ± 5.10	97.10 ± 25.41	215.50 ± 3.11	23.75 ± 36.70	61.72 ± 3.50	78.33 ± 61.77	204.76 ± 1.19	95.60 ± 22.92	35.66 ± 28.20
Maze2d avg	1.13	12.58	61.99	121.92	33.65	46.23	96.77	141.32	82.64	28.48
antmaze-umaze-v2	55.25 ± 4.15	65.75 ± 5.26	70.75 ± 39.18	56.75 ± 9.09	92.75 ± 1.92	77.00 ± 5.52	97.75 ± 1.48	0.00 ± 0.00	0.00 ± 0.00	57.00 ± 9.82
antmaze-umaze-diverse-v2	47.25 ± 4.09	44.00 ± 1.00	44.75 ± 11.61	54.75 ± 8.01	37.25 ± 3.70	54.25 ± 5.54	83.50 ± 7.02	0.00 ± 0.00	0.00 ± 0.00	51.75 ± 0.43
antmaze-medium-play-v2	0.00 ± 0.00	2.00 ± 0.71	0.25 ± 0.43	0.00 ± 0.00	65.75 ± 11.61	65.75 ± 11.71	89.50 ± 3.35	0.00 ± 0.00	0.00 ± 0.00	0.00 ± 0.00
antmaze-medium-diverse-v2	0.75 ± 0.83	5.75 ± 9.39	0.25 ± 0.43	0.00 ± 0.00	67.25 ± 3.56	73.75 ± 5.45	83.50 ± 8.20	0.00 ± 0.00	0.00 ± 0.00	0.00 ± 0.00
antmaze-large-play-v2	0.00 ± 0.00	0.00 ± 0.00	0.00 ± 0.00	0.00 ± 0.00	20.75 ± 7.26	42.00 ± 4.53	52.25 ± 29.01	0.00 ± 0.00	0.00 ± 0.00	0.00 ± 0.00
antmaze-large-diverse-v2	0.00 ± 0.00	0.75 ± 0.83	0.00 ± 0.00	0.00 ± 0.00	20.50 ± 13.24	30.25 ± 3.63	64.00 ± 5.43	0.00 ± 0.00	0.00 ± 0.00	0.00 ± 0.00
AntMaze avg	17.21	19.71	19.33	18.58	50.71	57.17	78.42	0.00	0.00	18.12
pen-human-v1	71.03 ± 6.26	26.99 ± 9.60	-3.88 ± 0.21	76.65 ± 11.71	13.71 ± 16.98	78.49 ± 8.21	103.16 ± 8.49	6.86 ± 5.93	5.07 ± 6.16	67.68 ± 5.48
pen-cloned-v1	51.92 ± 15.15	46.67 ± 14.25	5.13 ± 5.28	85.72 ± 16.92	1.04 ± 6.62	83.42 ± 8.19	102.79 ± 7.84	31.35 ± 2.14	12.02 ± 1.75	64.43 ± 1.43
pen-expert-v1	109.65 ± 7.28	114.96 ± 2.96	122.53 ± 21.27	159.91 ± 1.87	-1.41 ± 2.34	128.05 ± 9.21	152.16 ± 6.33	87.11 ± 48.95	-1.55 ± 0.81	116.38 ± 1.27
door-human-v1	2.34 ± 4.00	-0.13 ± 0.07	-0.33 ± 0.01	2.39 ± 2.26	5.53 ± 1.31	3.26 ± 1.83	-0.10 ± 0.01	-0.38 ± 0.00	-0.12 ± 0.13	4.44 ± 0.87
door-cloned-v1	-0.09 ± 0.03	0.29 ± 0.59	-0.34 ± 0.01	-0.01 ± 0.01	-0.33 ± 0.01	3.07 ± 1.75	0.06 ± 0.05	-0.33 ± 0.00	2.66 ± 2.31	7.64 ± 3.26
door-expert-v1	105.35 ± 0.09	104.04 ± 1.46	-0.33 ± 0.01	104.57 ± 0.31	-0.32 ± 0.02	106.65 ± 0.25	106.37 ± 0.29	-0.33 ± 0.00	106.29 ± 1.73	104.87 ± 0.39
hammer-human-v1	3.03 ± 3.39	-0.19 ± 0.02	1.02 ± 0.24	1.01 ± 0.51	0.14 ± 0.11	1.79 ± 0.80	0.24 ± 0.24	0.24 ± 0.00	0.24 ± 0.18	1.28 ± 0.15
hammer-cloned-v1	0.55 ± 0.16	0.12 ± 0.08	0.25 ± 0.01	1.27 ± 2.11	0.30 ± 0.01	1.50 ± 0.69	5.00 ± 3.75	0.14 ± 0.09	0.19 ± 0.07	1.82 ± 0.55
hammer-expert-v1	126.78 ± 0.64	121.75 ± 7.67	3.11 ± 0.03	127.08 ± 0.13	0.26 ± 0.01	128.68 ± 0.33	133.62 ± 0.27	25.13 ± 43.25	28.52 ± 49.00	117.45 ± 6.65
relocate-human-v1	0.04 ± 0.03	-0.14 ± 0.08	-0.29 ± 0.01	0.45 ± 0.53	0.06 ± 0.03	0.12 ± 0.04	0.16 ± 0.30	-0.31 ± 0.01	-0.17 ± 0.17	0.05 ± 0.01
relocate-cloned-v1	-0.06 ± 0.01	-0.00 ± 0.02	-0.30 ± 0.01	-0.01 ± 0.03	-0.29 ± 0.01	0.04 ± 0.01	1.66 ± 2.59	-0.01 ± 0.10	0.17 ± 0.35	0.16 ± 0.09
relocate-expert-v1	107.58 ± 1.20	97.90 ± 5.21	-1.73 ± 0.96	109.52 ± 0.47	-0.30 ± 0.02	106.11 ± 4.02	107.52 ± 2.28	-0.36 ± 0.00	71.94 ± 18.37	104.28 ± 0.42
Adroit avg	48.18	42.69	10.40	55.71	1.53	53.43	59.39	12.43	18.78	49.21
Total avg	37.95	43.06	37.16	62.01	37.61	61.92	76.04	44.16	43.65	48.31

choice of hyperparameters, and we had to tune them a lot to make it work on each domain (see Table 7). For example, AntMaze requires five hidden layers for the critic networks, while other tasks' performance suffers with this number of layers. The issue of sensitivity⁹ was already mentioned in prior works as well (An et al., 2021; Ghasempour et al., 2022).

Observation 3: CQL is extremely sensitive to the choice of hyperparameters and implementation details.

Fourth, we also observe that the hyperparameters do not always work the same way when transferring between Deep Learning frameworks¹⁰. Our implementations of IQL and CQL use PyTorch, but the parameters from reference JAX implementations sometimes strongly underperform (e.g., IQL on Hopper tasks and CQL on Adroit).

⁹See also <https://github.com/aviralkumar2907/CQL/issues/9>, <https://github.com/tinkoff-ai/CORL/issues/14> and <https://github.com/young-geng/CQL/issues/5>

¹⁰<https://github.com/tinkoff-ai/CORL/issues/33>

Table 2: Normalized performance of the best trained policy on D4RL averaged over 4 random seeds.

Task Name	BC	BC-10%	TD3+BC	AWAC	CQL	IQL	ReBRAC	SAC-N	EDAC	DT
halfcheetah-medium-v2	43.60 ± 0.14	43.90 ± 0.13	48.93 ± 0.11	50.81 ± 0.15	47.62 ± 0.03	48.84 ± 0.07	65.62 ± 0.46	72.21 ± 0.31	69.72 ± 0.92	42.73 ± 0.10
halfcheetah-medium-replay-v2	40.52 ± 0.19	42.27 ± 0.46	45.84 ± 0.26	46.47 ± 0.26	46.43 ± 0.19	45.35 ± 0.08	52.22 ± 0.31	67.29 ± 0.34	66.55 ± 1.05	40.31 ± 0.28
halfcheetah-medium-expert-v2	79.69 ± 3.10	94.11 ± 0.22	96.59 ± 0.87	96.83 ± 0.23	97.04 ± 0.17	95.38 ± 0.17	108.89 ± 1.20	111.73 ± 0.47	110.62 ± 1.04	93.40 ± 0.21
hopper-medium-v2	69.04 ± 2.90	73.84 ± 0.37	70.44 ± 1.18	95.42 ± 3.67	70.80 ± 1.98	80.46 ± 3.09	103.19 ± 0.16	101.79 ± 0.20	103.26 ± 0.14	69.42 ± 3.64
hopper-medium-replay-v2	68.88 ± 10.33	90.57 ± 2.07	98.12 ± 1.16	101.47 ± 0.23	101.63 ± 0.55	102.69 ± 0.96	102.57 ± 0.45	103.83 ± 0.53	103.28 ± 0.49	88.74 ± 3.02
hopper-medium-expert-v2	90.63 ± 10.98	113.13 ± 0.16	113.22 ± 0.43	113.26 ± 0.49	112.84 ± 0.66	113.18 ± 0.38	113.16 ± 0.43	111.24 ± 0.15	111.80 ± 0.11	111.18 ± 0.21
walker2d-medium-v2	80.64 ± 0.91	82.05 ± 0.93	86.91 ± 0.28	85.86 ± 3.76	84.77 ± 0.20	87.58 ± 0.48	87.79 ± 0.19	90.17 ± 0.54	95.78 ± 1.07	74.70 ± 0.56
walker2d-medium-replay-v2	48.41 ± 7.61	76.09 ± 0.40	91.17 ± 0.72	86.70 ± 0.94	89.39 ± 0.88	89.94 ± 0.93	91.11 ± 0.63	85.18 ± 1.63	89.69 ± 1.39	68.22 ± 1.20
walker2d-medium-expert-v2	109.95 ± 0.62	109.90 ± 0.09	112.21 ± 0.06	113.40 ± 2.22	111.63 ± 0.38	113.06 ± 0.53	112.49 ± 0.18	116.93 ± 0.42	116.52 ± 0.75	108.71 ± 0.34
Gym-MuJoCo avg	70.15	80.65	84.83	87.80	84.68	86.28	93.00	95.60	96.36	77.49
maz2d-umaze-v1	16.09 ± 0.87	22.49 ± 1.52	99.33 ± 16.16	136.96 ± 10.89	92.05 ± 13.66	50.92 ± 4.23	162.28 ± 1.79	153.12 ± 6.49	149.88 ± 1.97	63.83 ± 17.35
maz2d-medium-v1	19.16 ± 1.24	27.64 ± 1.87	150.93 ± 3.89	152.73 ± 20.78	128.66 ± 5.44	122.69 ± 30.00	150.12 ± 4.48	93.80 ± 14.66	154.41 ± 1.58	68.14 ± 12.25
maz2d-large-v1	20.75 ± 6.66	41.83 ± 3.64	197.64 ± 5.26	227.31 ± 1.47	157.51 ± 7.32	162.25 ± 44.18	197.55 ± 5.82	207.51 ± 0.96	182.52 ± 2.68	50.25 ± 19.34
Maze2d avg	18.67	30.65	149.30	172.33	126.07	111.95	169.98	151.48	162.27	60.74
antmaze-umaze-v2	68.50 ± 2.29	77.50 ± 1.50	98.50 ± 0.87	70.75 ± 8.84	94.75 ± 0.83	84.00 ± 4.06	100.00 ± 0.00	0.00 ± 0.00	42.50 ± 28.61	64.50 ± 2.06
antmaze-umaze-diverse-v2	64.75 ± 4.32	63.50 ± 2.18	71.25 ± 5.76	81.50 ± 4.27	53.75 ± 2.05	79.50 ± 3.35	96.75 ± 2.28	0.00 ± 0.00	0.00 ± 0.00	60.50 ± 2.29
antmaze-medium-play-v2	4.50 ± 1.12	6.25 ± 2.38	3.75 ± 1.30	25.00 ± 10.70	80.50 ± 3.35	78.50 ± 3.84	93.50 ± 2.60	0.00 ± 0.00	0.00 ± 0.00	0.75 ± 0.43
antmaze-medium-diverse-v2	4.75 ± 1.09	16.50 ± 5.59	5.50 ± 1.50	10.75 ± 5.31	71.00 ± 4.53	83.50 ± 1.80	91.75 ± 2.05	0.00 ± 0.00	0.00 ± 0.00	0.50 ± 0.50
antmaze-large-play-v2	0.50 ± 0.50	13.50 ± 9.76	1.25 ± 0.43	0.50 ± 0.50	34.75 ± 5.85	53.50 ± 2.50	68.75 ± 13.90	0.00 ± 0.00	0.00 ± 0.00	0.00 ± 0.00
antmaze-large-diverse-v2	0.75 ± 0.43	6.25 ± 1.79	0.25 ± 0.43	0.00 ± 0.00	36.25 ± 3.34	53.00 ± 3.00	69.50 ± 7.26	0.00 ± 0.00	0.00 ± 0.00	0.00 ± 0.00
AntMaze avg	23.96	30.58	30.08	31.42	61.83	72.00	86.71	0.00	7.08	21.04
pen-human-v1	99.69 ± 7.45	59.89 ± 8.03	9.95 ± 8.19	119.03 ± 6.55	58.91 ± 1.81	106.15 ± 10.28	127.28 ± 3.22	56.48 ± 7.17	35.84 ± 10.57	77.83 ± 2.30
pen-cloned-v1	99.14 ± 12.27	83.62 ± 11.75	52.66 ± 6.33	125.78 ± 3.28	14.74 ± 2.51	114.05 ± 4.78	128.64 ± 7.15	52.69 ± 5.30	26.90 ± 7.85	71.17 ± 2.70
pen-expert-v1	128.77 ± 5.88	134.36 ± 3.16	142.83 ± 7.72	162.53 ± 0.30	14.86 ± 4.07	140.01 ± 6.36	157.62 ± 0.26	116.43 ± 40.26	36.04 ± 4.60	119.49 ± 2.31
door-human-v1	9.41 ± 4.55	7.00 ± 6.77	-0.11 ± 0.06	17.70 ± 2.55	13.28 ± 2.77	13.52 ± 1.22	0.27 ± 0.43	-0.10 ± 0.06	2.51 ± 2.26	7.36 ± 1.24
door-cloned-v1	3.40 ± 0.95	10.37 ± 4.09	-0.20 ± 0.11	10.53 ± 2.82	-0.08 ± 0.13	9.02 ± 1.47	7.73 ± 6.80	-0.21 ± 0.10	20.36 ± 1.11	11.18 ± 0.96
door-expert-v1	105.84 ± 0.23	105.92 ± 0.24	4.49 ± 7.39	106.60 ± 0.27	59.47 ± 25.04	107.29 ± 0.37	106.78 ± 0.04	0.05 ± 0.02	109.22 ± 0.24	105.49 ± 0.09
hammer-human-v1	12.61 ± 4.87	6.23 ± 4.79	2.38 ± 0.14	16.95 ± 3.61	0.30 ± 0.05	6.86 ± 2.38	1.18 ± 0.15	0.25 ± 0.00	3.49 ± 2.17	1.68 ± 0.11
hammer-cloned-v1	8.90 ± 4.04	8.72 ± 3.28	0.96 ± 0.30	10.74 ± 5.54	0.32 ± 0.03	11.63 ± 1.70	48.16 ± 6.20	12.67 ± 15.02	0.27 ± 0.01	2.74 ± 0.22
hammer-expert-v1	127.89 ± 0.57	128.15 ± 0.66	33.31 ± 47.65	129.08 ± 0.26	0.93 ± 1.12	129.76 ± 0.37	134.74 ± 0.30	91.74 ± 47.77	69.44 ± 47.00	127.39 ± 0.10
relocate-human-v1	0.59 ± 0.27	0.16 ± 0.14	-0.29 ± 0.01	1.77 ± 0.84	1.03 ± 0.20	1.22 ± 0.28	3.70 ± 2.34	-0.18 ± 0.14	0.05 ± 0.02	0.08 ± 0.02
relocate-cloned-v1	0.45 ± 0.31	0.74 ± 0.45	-0.02 ± 0.04	0.39 ± 0.13	-0.07 ± 0.02	1.78 ± 0.70	9.25 ± 2.56	0.10 ± 0.04	4.11 ± 1.39	0.34 ± 0.09
relocate-expert-v1	110.31 ± 0.36	109.77 ± 0.60	0.23 ± 0.27	111.21 ± 0.32	0.03 ± 0.10	110.12 ± 0.82	111.14 ± 0.23	-0.07 ± 0.08	98.32 ± 3.75	106.49 ± 0.30
Adroit avg	58.92	54.58	20.51	67.69	13.65	62.62	69.71	27.49	33.88	52.60
Total avg	51.27	55.21	54.60	76.93	55.84	76.53	90.12	54.82	60.10	54.57

Observation 4: Hyperparameters are not always transferable between Deep Learning frameworks.

4.2 Offline-to-Online

We also implement the following algorithms in offline-to-online setup: CQL (Kumar et al., 2020), IQL (Kostrikov et al., 2021), AWAC (Nair et al., 2020), SPOT (Wu et al., 2022) Cal-QL (Nakamoto et al., 2023), ReBRAC (Tarasov et al., 2023). Inspired by Nakamoto et al. (2023), we evaluate algorithms on AntMaze and Adroit Cloned datasets¹¹. Each algorithm is trained offline over 1 million steps and tuned using online transitions over another 1 million steps. The AntMaze tasks are evaluated using 100 episodes, while the Adroit tasks are tested with ten episodes.

Table 3: Normalized performance of algorithms after offline pretraining and online finetuning on D4RL averaged over 4 random seeds.

Task Name	AWAC	CQL	IQL	SPOT	Cal-QL	ReBRAC
antmaze-umaze-v2	52.75 ± 8.67 → 98.75 ± 1.09	94.00 ± 1.58 → 99.50 ± 0.87	77.00 ± 0.71 → 96.50 ± 1.12	91.00 ± 2.55 → 99.50 ± 0.50	76.75 ± 7.53 → 99.75 ± 0.43	98.00 ± 1.82 → 74.75 ± 49.17
antmaze-umaze-diverse-v2	56.00 ± 2.74 → 0.00 ± 0.00	9.50 ± 9.91 → 99.00 ± 1.22	59.50 ± 9.55 → 63.75 ± 25.02	36.25 ± 2.17 → 95.00 ± 3.67	32.00 ± 27.79 → 98.50 ± 1.12	73.75 ± 15.32 → 98.00 ± 3.36
antmaze-medium-play-v2	0.00 ± 0.00 → 0.00 ± 0.00	59.00 ± 11.18 → 97.75 ± 1.30	71.75 ± 2.95 → 89.75 ± 1.09	67.25 ± 10.47 → 97.25 ± 1.30	71.75 ± 3.27 → 98.75 ± 1.64	87.5 ± 4.35 → 98.0 ± 1.82
antmaze-medium-diverse-v2	0.00 ± 0.00 → 0.00 ± 0.00	63.50 ± 6.84 → 97.25 ± 1.92	64.25 ± 1.92 → 92.25 ± 2.86	73.75 ± 7.29 → 94.50 ± 1.66	62.00 ± 4.30 → 98.25 ± 1.48	85.25 ± 2.5 → 98.75 ± 0.5
antmaze-large-play-v2	0.00 ± 0.00 → 0.00 ± 0.00	28.75 ± 7.76 → 88.25 ± 2.28	38.50 ± 8.73 → 64.50 ± 17.04	31.50 ± 12.58 → 87.00 ± 3.24	31.75 ± 8.87 → 97.25 ± 1.79	68.5 ± 7.1 → 31.5 ± 38.75
antmaze-large-diverse-v2	0.00 ± 0.00 → 0.00 ± 0.00	35.50 ± 3.64 → 91.75 ± 3.96	26.75 ± 3.77 → 64.25 ± 4.15	17.50 ± 7.26 → 81.00 ± 14.14	44.00 ± 8.69 → 91.50 ± 3.91	67.0 ± 12.24 → 72.25 ± 48.18
AntMaze avg	18.12 → 16.46 (-1.66)	48.38 → 95.58 (+47.20)	56.29 → 78.50 (+22.21)	52.88 → 92.38 (+39.50)	53.04 → 97.33 (+24.29)	79.99 → 78.87 (-1.11)
pen-cloned-v1	88.66 ± 15.10 → 86.82 ± 11.12	-2.76 ± 0.08 → -1.28 ± 2.16	84.19 ± 3.96 → 102.02 ± 20.75	6.19 ± 5.21 → 43.63 ± 20.09	-2.66 ± 0.04 → -2.68 ± 0.12	74.04 ± 13.82 → 138.15 ± 3.71
door-cloned-v1	0.93 ± 1.66 → 0.01 ± 0.00	-0.33 ± 0.01 → -0.33 ± 0.01	1.19 ± 0.93 → 20.34 ± 9.32	-0.21 ± 0.14 → 0.02 ± 0.31	-0.33 ± 0.01 → -0.33 ± 0.01	0.06 ± 0.04 → 102.38 ± 9.54
hammer-cloned-v1	1.80 ± 3.01 → 0.24 ± 0.04	0.56 ± 0.55 → 2.85 ± 4.81	1.35 ± 0.32 → 57.27 ± 28.49	3.97 ± 6.39 → 3.73 ± 4.99	0.25 ± 0.04 → 0.17 ± 0.17	6.53 ± 3.86 → 124.65 ± 8.51
relocate-cloned-v1	-0.04 ± 0.04 → -0.04 ± 0.01	-0.33 ± 0.01 → -0.33 ± 0.01	0.04 ± 0.04 → 0.32 ± 0.38	-0.24 ± 0.01 → -0.15 ± 0.05	-0.31 ± 0.05 → -0.31 ± 0.04	0.69 ± 0.71 → 6.96 ± 5.3
Adroit Avg	22.84 → 21.76 (-1.08)	-0.72 → 0.22 (+0.94)	21.69 → 44.99 (+23.3)	2.43 → 11.81 (+9.38)	-0.76 → -0.79 (-0.03)	20.33 → 93.03 (+72.7)
Total avg	20.01 → 18.58 (-1.43)	28.74 → 57.44 (+28.7)	42.45 → 65.10 (+22.65)	32.70 → 60.15 (+27.45)	31.52 → 58.08 (+26.56)	56.12 → 84.53 (+28.41)

The scores, normalized after the offline stage and online tuning, are reported in Table 3. We also provide finetuning cumulative regret proposed by Nakamoto et al. (2023) in Table 4. Cumulative regret is calculated as $(1 - \text{average success rate})^{12}$. It is bounded between 0 and 1, indicating the range of possible values. Lower values of cumulative regret indicate better algorithm efficiency. The performance profiles and probability of improvement of ReBRAC over other algorithms after online finetuning are presented in Figure 3.

¹¹Note, Nakamoto et al. (2023) used modified Cloned datasets while we employ original data from D4RL because these datasets are more common to for benchmarking.

¹²As specified by the authors: <https://github.com/nakamotoo/Cal-QL/issues/1>

Table 4: Cumulative regret of online finetuning calculated as $1 - \text{average success rate}$ averaged over 4 random seeds.

Task Name	AWAC	CQL	IQL	SPOT	Cal-QL	ReBRAC
antmaze-umaze-v2	0.04 ± 0.01	0.02 ± 0.00	0.07 ± 0.00	0.02 ± 0.00	0.01 ± 0.00	0.10 ± 0.20
antmaze-umaze-diverse-v2	0.88 ± 0.01	0.09 ± 0.01	0.43 ± 0.11	0.22 ± 0.07	0.05 ± 0.01	0.04 ± 0.02
antmaze-medium-play-v2	1.00 ± 0.00	0.08 ± 0.01	0.09 ± 0.01	0.06 ± 0.00	0.04 ± 0.01	0.02 ± 0.00
antmaze-medium-diverse-v2	1.00 ± 0.00	0.08 ± 0.00	0.10 ± 0.01	0.05 ± 0.01	0.04 ± 0.01	0.03 ± 0.00
antmaze-large-play-v2	1.00 ± 0.00	0.21 ± 0.02	0.34 ± 0.05	0.29 ± 0.07	0.13 ± 0.02	0.14 ± 0.05
antmaze-large-diverse-v2	1.00 ± 0.00	0.21 ± 0.03	0.41 ± 0.03	0.23 ± 0.08	0.13 ± 0.02	0.29 ± 0.45
AntMaze avg	0.82	0.11	0.24	0.15	0.07	0.10
pen-cloned-v1	0.46 ± 0.02	0.97 ± 0.00	0.37 ± 0.01	0.58 ± 0.02	0.98 ± 0.01	0.08 ± 0.01
door-cloned-v1	1.00 ± 0.00	1.00 ± 0.00	0.83 ± 0.03	0.99 ± 0.01	1.00 ± 0.00	0.18 ± 0.06
hammer-cloned-v1	1.00 ± 0.00	1.00 ± 0.00	0.65 ± 0.10	0.98 ± 0.01	1.00 ± 0.00	0.12 ± 0.03
relocate-cloned-v1	1.00 ± 0.00	1.00 ± 0.00	1.00 ± 0.00	1.00 ± 0.00	1.00 ± 0.00	0.9 ± 0.06
Adroit avg	0.86	0.99	0.71	0.89	0.99	0.32
Total avg	0.84	0.47	0.43	0.44	0.44	0.19

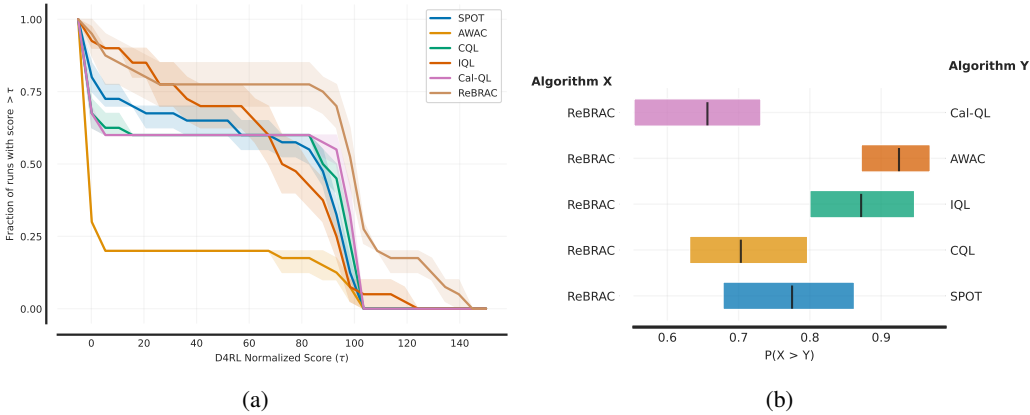


Figure 3: (a) Performance profiles after online tuning (b) Probability of improvement of ReBRAC to other algorithms after online tuning. The curves (Agarwal et al., 2021) are for D4RL benchmark spanning AntMaze and Adroit cloned datasets.

AWAC, initially proposed for finetuning purposes, appeared to be the worst of the considered algorithms, where the score is improved only on the most straightforward antmaze-umaze-v2 dataset. At the same time, on other datasets, performances either stay the same or even drop.

Observation 5: AWAC does not benefit from online tuning on the considered tasks.

Cal-QL was proposed as a modification of CQL, which is expected to work better in offline-to-online setting. However, in our experiments, after finetuning CQL obtained scores which are not very different from Cal-QL. At the same time, we could not make both algorithms solve Adroit tasks¹³.

Observation 6: There is no big difference between CQL and Cal-QL. On AntMaze, these algorithms perform the best but work poorly on Adroit.

IQL starts with good offline scores on AntMaze, but it is less efficient in finetuning than other algorithms except for AWAC. At the same time, IQL and ReBRAC are the only algorithms that notably improve its scores after tuning on Adroit tasks, making them the most competitive offline-to-online baselines considering the average score.

¹³The issues are Observations 3 and 4. Additional hyperparameters search is needed.

Observation 7: Considering offline and offline-to-online results, IQL and ReBRAC appear to be the strongest baselines on average.

5 Conclusion

This paper introduced CORL, a single-file implementation library for offline and offline-to-online reinforcement learning algorithms with configuration files and advanced metrics tracking support. In total, we provided implementations of ten offline and six offline-to-online algorithms. All implemented approaches were benchmarked on D4RL datasets, closely matching (sometimes overperforming) the reference results, if available. Focusing on implementation clarity and reproducibility, we hope that CORL will help RL practitioners in their research and applications.

This study’s benchmarking results and observations are intended to serve as references for future offline reinforcement learning research and its practical applications. By sharing comprehensive logs, researchers can readily access and utilize our results without having to re-run any of our experiments, ensuring that the results are replicable.

References

- Martín Abadi, Ashish Agarwal, Paul Barham, Eugene Brevdo, Zhifeng Chen, Craig Citro, Greg S. Corrado, Andy Davis, Jeffrey Dean, Matthieu Devin, Sanjay Ghemawat, Ian Goodfellow, Andrew Harp, Geoffrey Irving, Michael Isard, Yangqing Jia, Rafal Jozefowicz, Lukasz Kaiser, Manjunath Kudlur, Josh Levenberg, Dandelion Mané, Rajat Monga, Sherry Moore, Derek Murray, Chris Olah, Mike Schuster, Jonathon Shlens, Benoit Steiner, Ilya Sutskever, Kunal Talwar, Paul Tucker, Vincent Vanhoucke, Vijay Vasudevan, Fernanda Viégas, Oriol Vinyals, Pete Warden, Martin Wattenberg, Martin Wicke, Yuan Yu, and Xiaoqiang Zheng. TensorFlow: Large-scale machine learning on heterogeneous systems, 2015. URL <https://www.tensorflow.org/>. Software available from tensorflow.org.
- Rishabh Agarwal, Max Schwarzer, Pablo Samuel Castro, Aaron Courville, and Marc G Bellemare. Deep reinforcement learning at the edge of the statistical precipice. *Advances in Neural Information Processing Systems*, 2021.
- Gaon An, Seungyong Moon, Jang-Hyun Kim, and Hyun Oh Song. Uncertainty-based offline reinforcement learning with diversified q-ensemble. *Advances in neural information processing systems*, 34:7436–7447, 2021.
- Gor Arakelyan, Gevorg Sghomonyan, and The Aim team. Aim, 6 2020. URL <https://github.com/aimhubio/aim>.
- Lukas Biewald. Experiment tracking with weights and biases, 2020. URL <https://www.wandb.com/>. Software available from wandb.com.
- Pablo Samuel Castro, Subhodeep Moitra, Carles Gelada, Saurabh Kumar, and Marc G Bellemare. Dopamine: A research framework for deep reinforcement learning. *arXiv preprint arXiv:1812.06110*, 2018.
- Lili Chen, Kevin Lu, Aravind Rajeswaran, Kimin Lee, Aditya Grover, Misha Laskin, Pieter Abbeel, Aravind Srinivas, and Igor Mordatch. Decision transformer: Reinforcement learning via sequence modeling. *Advances in neural information processing systems*, 34:15084–15097, 2021.
- Minmin Chen, Can Xu, Vince Gatto, Devanshu Jain, Aviral Kumar, and Ed H. Chi. Off-policy actor-critic for recommender systems. *Proceedings of the 16th ACM Conference on Recommender Systems*, 2022.
- Prafulla Dhariwal, Christopher Hesse, Oleg Klimov, Alex Nichol, Matthias Plappert, Alec Radford, John Schulman, Szymon Sidor, Yuhuai Wu, and Peter Zhokhov. Openai baselines. <https://github.com/openai/baselines>, 2017.
- Christopher P. Diehl, Timo Sievernich, Martin Krüger, Frank Hoffmann, and Torsten Bertram. Umbrella: Uncertainty-aware model-based offline reinforcement learning leveraging planning. *ArXiv*, abs/2111.11097, 2021.

- Yan Duan, Xi Chen, Rein Houthoofd, John Schulman, and Pieter Abbeel. Benchmarking deep reinforcement learning for continuous control. In *Proceedings of the 33rd International Conference on International Conference on Machine Learning - Volume 48*, ICML'16, pp. 1329–1338. JMLR.org, 2016.
- Logan Engstrom, Andrew Ilyas, Shibani Santurkar, Dimitris Tsipras, Firdaus Janoos, L. Rudolph, and Aleksander Madry. Implementation matters in deep rl: A case study on ppo and trpo. In *ICLR*, 2020.
- Justin Fu, Aviral Kumar, Ofir Nachum, George Tucker, and Sergey Levine. D4rl: Datasets for deep data-driven reinforcement learning. *arXiv preprint arXiv:2004.07219*, 2020.
- Scott Fujimoto and Shixiang Shane Gu. A minimalist approach to offline reinforcement learning. *Advances in neural information processing systems*, 34:20132–20145, 2021.
- Yasuhiro Fujita, Prabhat Nagarajan, Toshiki Kataoka, and Takahiro Ishikawa. Chainerrl: A deep reinforcement learning library. *Journal of Machine Learning Research*, 22(77):1–14, 2021. URL <http://jmlr.org/papers/v22/20-376.html>.
- The garage contributors. Garage: A toolkit for reproducible reinforcement learning research. <https://github.com/rlworkgroup/garage>, 2019.
- Jason Gauci, Edoardo Conti, Yitao Liang, Kittipat Virochsiri, Zhengxing Chen, Yuchen He, Zachary Kaden, Vivek Narayanan, and Xiaohui Ye. Horizon: Facebook’s open source applied reinforcement learning platform. *arXiv preprint arXiv:1811.00260*, 2018.
- Kamyar Ghasemipour, Shixiang Shane Gu, and Ofir Nachum. Why so pessimistic? estimating uncertainties for offline rl through ensembles, and why their independence matters. *Advances in Neural Information Processing Systems*, 35:18267–18281, 2022.
- Peter Henderson, Riashat Islam, Philip Bachman, Joelle Pineau, Doina Precup, and David Meger. Deep reinforcement learning that matters. In *Proceedings of the Thirty-Second AAAI Conference on Artificial Intelligence and Thirtieth Innovative Applications of Artificial Intelligence Conference and Eighth AAAI Symposium on Educational Advances in Artificial Intelligence*, AAAI'18/IAAI'18/EAAI'18. AAAI Press, 2018. ISBN 978-1-57735-800-8.
- Ashley Hill, Antonin Raffin, Maximilian Ernestus, Adam Gleave, Anssi Kanervisto, Rene Traore, Prafulla Dhariwal, Christopher Hesse, Oleg Klimov, Alex Nichol, Matthias Plappert, Alec Radford, John Schulman, Szymon Sidor, and Yuhuai Wu. Stable baselines. <https://github.com/hill-a/stable-baselines>, 2018.
- Shengyi Huang, Rousslan Fernand Julien Dossa, Chang Ye, and Jeff Braga. Cleanrl: High-quality single-file implementations of deep reinforcement learning algorithms. *arXiv preprint arXiv:2111.08819*, 2021.
- Wah Loon Keng and Laura Graesser. Slm lab. <https://github.com/kengz/SLM-Lab>, 2017.
- Diederik P Kingma and Jimmy Ba. Adam: A method for stochastic optimization. *arXiv preprint arXiv:1412.6980*, 2014.
- Sergey Kolesnikov and Oleksii Hrinchuk. Catalyst.rl: A distributed framework for reproducible rl research, 2019. URL <https://arxiv.org/abs/1903.00027>.
- Ilya Kostrikov, Ashvin Nair, and Sergey Levine. Offline reinforcement learning with implicit q-learning. *arXiv preprint arXiv:2110.06169*, 2021.
- Aviral Kumar, Aurick Zhou, George Tucker, and Sergey Levine. Conservative q-learning for offline reinforcement learning. *Advances in Neural Information Processing Systems*, 33:1179–1191, 2020.
- Aviral Kumar, Anikait Singh, Stephen Tian, Chelsea Finn, and Sergey Levine. A workflow for offline model-free robotic reinforcement learning. In *5th Annual Conference on Robot Learning*, 2021. URL <https://openreview.net/forum?id=fy4ZBwxYbIo>.

- Vladislav Kurenkov and Sergey Kolesnikov. Showing your offline reinforcement learning work: Online evaluation budget matters. In Kamalika Chaudhuri, Stefanie Jegelka, Le Song, Csaba Szepesvari, Gang Niu, and Sivan Sabato (eds.), *Proceedings of the 39th International Conference on Machine Learning*, volume 162 of *Proceedings of Machine Learning Research*, pp. 11729–11752. PMLR, 17–23 Jul 2022. URL <https://proceedings.mlr.press/v162/kurenkov22a.html>.
- Sergey Levine, Aviral Kumar, George Tucker, and Justin Fu. Offline reinforcement learning: Tutorial, review, and perspectives on open problems. *arXiv preprint arXiv:2005.01643*, 2020.
- Eric Liang, Richard Liaw, Robert Nishihara, Philipp Moritz, Roy Fox, Ken Goldberg, Joseph E. Gonzalez, Michael I. Jordan, and Ion Stoica. RLlib: Abstractions for distributed reinforcement learning. In *International Conference on Machine Learning (ICML)*, 2018.
- Xiao-Yang Liu, Zechu Li, Zhaoran Wang, and Jiahao Zheng. ElegantRL: Massively parallel framework for cloud-native deep reinforcement learning. <https://github.com/AI4Finance-Foundation/ElegantRL>, 2021.
- Ilya Loshchilov and Frank Hutter. Decoupled weight decay regularization. *arXiv preprint arXiv:1711.05101*, 2017.
- Volodymyr Mnih, Koray Kavukcuoglu, David Silver, Andrei A. Rusu, Joel Veness, Marc G. Belle-mare, Alex Graves, Martin Riedmiller, Andreas K. Fidjeland, Georg Ostrovski, Stig Petersen, Charles Beattie, Amir Sadik, Ioannis Antonoglou, Helen King, Dharshan Kumaran, Daan Wierstra, Shane Legg, and Demis Hassabis. Human-level control through deep reinforcement learning. *Nature*, 518(7540):529–533, February 2015. ISSN 1476-4687. doi: 10.1038/nature14236.
- Ashvin Nair, Murtaza Dalal, Abhishek Gupta, and Sergey Levine. Accelerating online reinforcement learning with offline datasets. *arXiv preprint arXiv:2006.09359*, 2020.
- Mitsuhiko Nakamoto, Yuexiang Zhai, Anikait Singh, Max Sobol Mark, Yi Ma, Chelsea Finn, Aviral Kumar, and Sergey Levine. Cal-ql: Calibrated offline rl pre-training for efficient online fine-tuning. *arXiv preprint arXiv:2303.05479*, 2023.
- Laura Smith, Ilya Kostrikov, and Sergey Levine. A Walk in the Park: Learning to Walk in 20 Minutes With Model-Free Reinforcement Learning, August 2022.
- Adam Stooke and Pieter Abbeel. rlpyt: A research code base for deep reinforcement learning in pytorch, 2019. URL <https://arxiv.org/abs/1909.01500>.
- Michita Imai Takuma Seno. d3rlpy: An offline deep reinforcement library. In *NeurIPS 2021 Offline Reinforcement Learning Workshop*, December 2021.
- Denis Tarasov, Vladislav Kurenkov, Alexander Nikulin, and Sergey Kolesnikov. Revisiting the minimalist approach to offline reinforcement learning. *arXiv preprint arXiv:2305.09836*, 2023.
- Jiayi Weng, Huayu Chen, Dong Yan, Kaichao You, Alexis Duburcq, Minghao Zhang, Yi Su, Hang Su, and Jun Zhu. Tianshou: A highly modularized deep reinforcement learning library. *arXiv preprint arXiv:2107.14171*, 2021.
- Jiayi Weng, Min Lin, Shengyi Huang, Bo Liu, Denys Makoviichuk, Viktor Makoviychuk, Zichen Liu, Yufan Song, Ting Luo, Yukun Jiang, Zhongwen Xu, and Shuicheng Yan. EnvPool: A highly parallel reinforcement learning environment execution engine. In S. Koyejo, S. Mohamed, A. Agarwal, D. Belgrave, K. Cho, and A. Oh (eds.), *Advances in Neural Information Processing Systems*, volume 35, pp. 22409–22421. Curran Associates, Inc., 2022. URL https://proceedings.neurips.cc/paper_files/paper/2022/file/8caaf08e49ddb6694fae067442ee21-Paper-Datasets_and_Benchmarks.pdf.
- Jialong Wu, Haixu Wu, Zihan Qiu, Jianmin Wang, and Mingsheng Long. Supported policy optimization for offline reinforcement learning. *arXiv preprint arXiv:2202.06239*, 2022.

Checklist

1. For all authors...
 - (a) Do the main claims made in the abstract and introduction accurately reflect the paper’s contributions and scope? [Yes]
 - (b) Did you describe the limitations of your work? [Yes] See section 3
 - (c) Did you discuss any potential negative societal impacts of your work? [N/A]
 - (d) Have you read the ethics review guidelines and ensured that your paper conforms to them? [Yes]
2. If you are including theoretical results...
 - (a) Did you state the full set of assumptions of all theoretical results? [N/A]
 - (b) Did you include complete proofs of all theoretical results? [N/A]
3. If you ran experiments (e.g. for benchmarks)...
 - (a) Did you include the code, data, and instructions needed to reproduce the main experimental results (either in the supplemental material or as a URL)? [Yes] We release our codebase, configs, and in-depth reports at <https://github.com/tinkoff-ai/CORL>
 - (b) Did you specify all the training details (e.g., data splits, hyperparameters, how they were chosen)? [Yes] See Appendix D
 - (c) Did you report error bars (e.g., with respect to the random seed after running experiments multiple times)? [Yes]
 - (d) Did you include the total amount of compute and the type of resources used (e.g., type of GPUs, internal cluster, or cloud provider)? [Yes] See Appendix D
4. If you are using existing assets (e.g., code, data, models) or curating/releasing new assets...
 - (a) If your work uses existing assets, did you cite the creators? [Yes]
 - (b) Did you mention the license of the assets? [Yes] See Appendix C
 - (c) Did you include any new assets either in the supplemental material or as a URL? [N/A]
 - (d) Did you discuss whether and how consent was obtained from people whose data you’re using/curating? [N/A]
 - (e) Did you discuss whether the data you are using/curating contains personally identifiable information or offensive content? [N/A]
5. If you used crowdsourcing or conducted research with human subjects...
 - (a) Did you include the full text of instructions given to participants and screenshots, if applicable? [N/A]
 - (b) Did you describe any potential participant risks, with links to Institutional Review Board (IRB) approvals, if applicable? [N/A]
 - (c) Did you include the estimated hourly wage paid to participants and the total amount spent on participant compensation? [N/A]

A Additional Benchmark Information

A.1 Offline

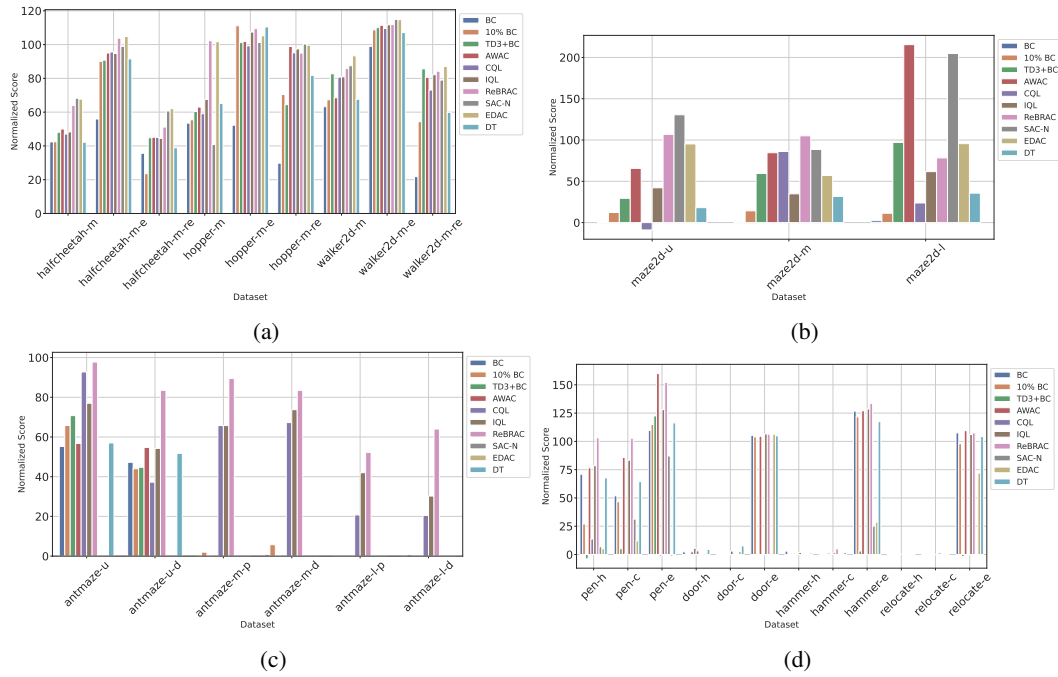


Figure 4: Graphical representation of the normalized performance of the last trained policy on D4RL averaged over 4 random seeds. (a) Gym-MuJoCo datasets. (b) Maze2d datasets (c) AntMaze datasets (d) Adroit datasets

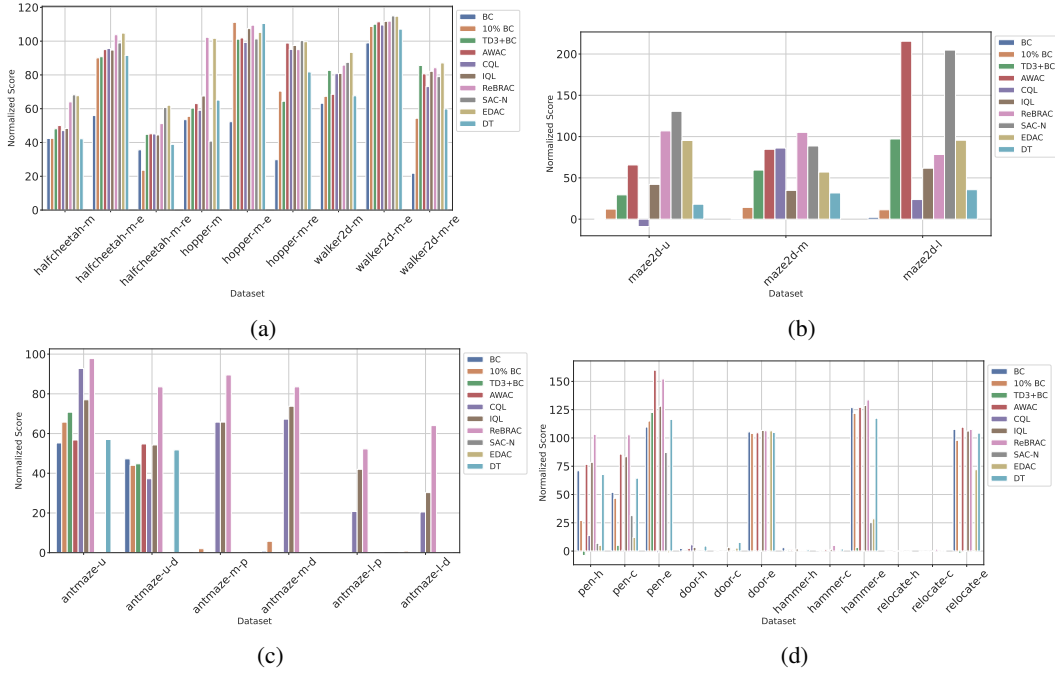


Figure 5: Graphical representation of the normalized performance of the best trained policy on D4RL averaged over 4 random seeds. (a) Gym-MuJoCo datasets. (b) Maze2d datasets (c) AntMaze datasets (d) Adroit datasets

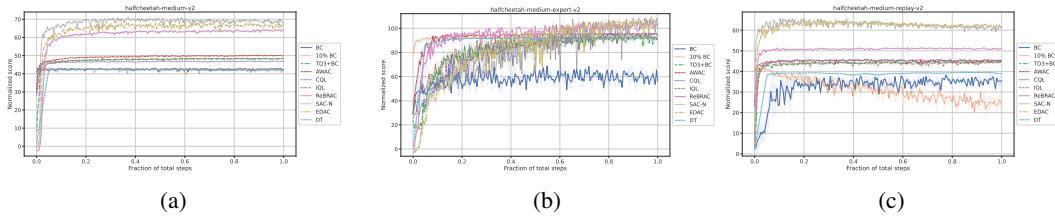


Figure 6: Training curves for HalfCheetah task. (a) Medium dataset, (b) Medium-expert dataset, (c) Medium-replay dataset

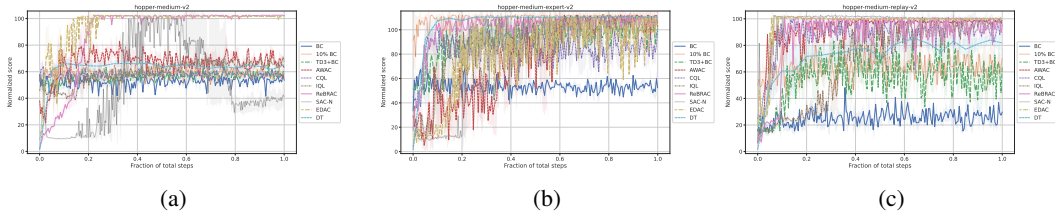


Figure 7: Training curves for Hopper task. (a) Medium dataset, (b) Medium-expert dataset, (c) Medium-replay dataset

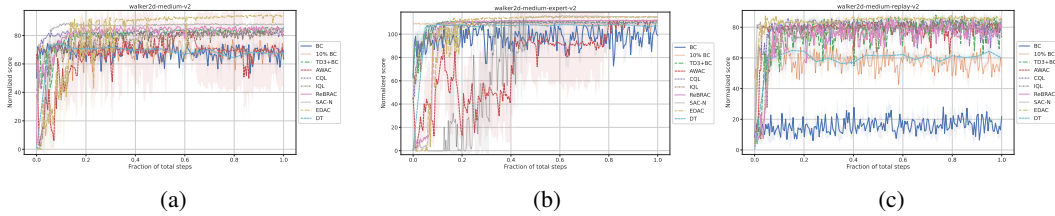


Figure 8: Training curves for Walker2d task. (a) Medium dataset, (b) Medium-expert dataset, (c) Medium-replay dataset

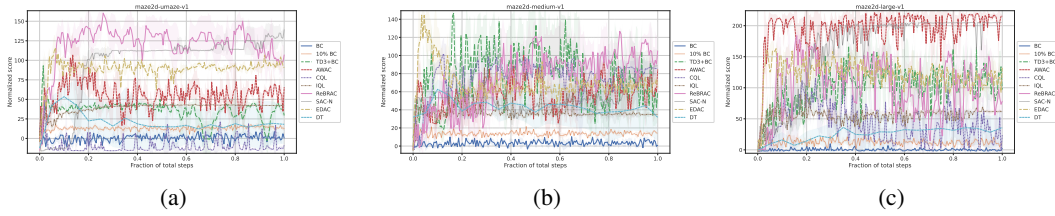


Figure 9: Training curves for Maze2d task.
 (a) Medium dataset, (b) Medium-expert dataset, (c) Medium-replay dataset

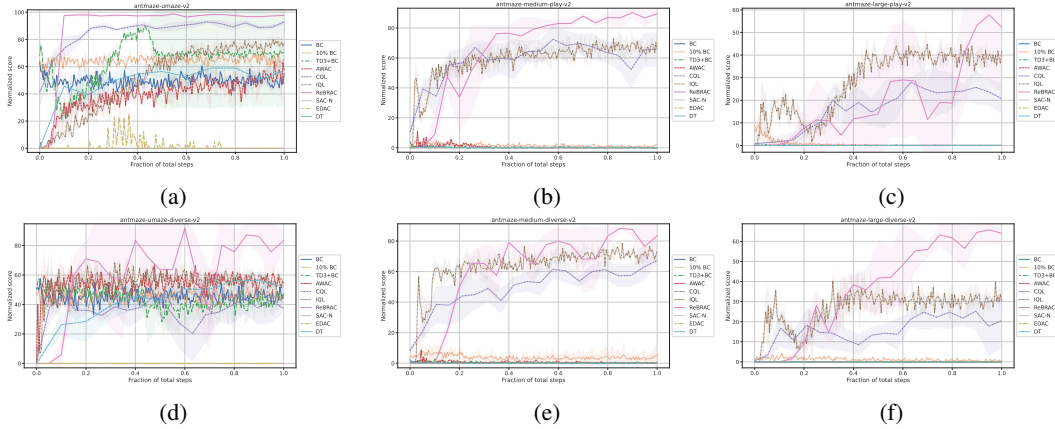


Figure 10: Training curves for AntMaze task.
 (a) Umaze dataset, (b) Medium-play dataset, (c) Large-play dataset, (d) Umaze-diverse dataset, (e) Medium-diverse dataset, (f) Large-diverse dataset

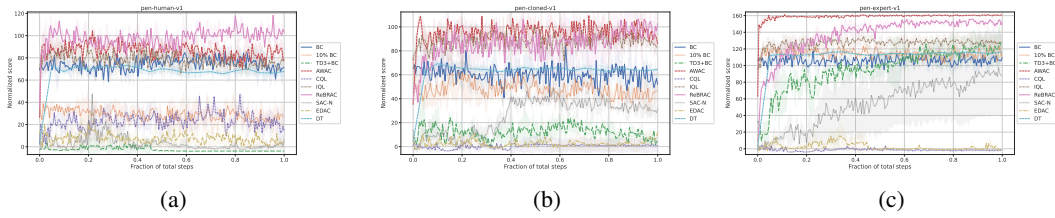


Figure 11: Training curves for Pen task.
 (a) Human dataset, (b) Colned dataset, (c) Expert dataset

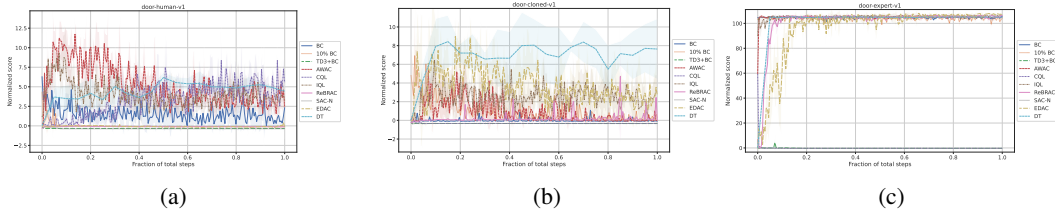


Figure 12: Training curves for Door task.
 (a) Human dataset, (b) Colned dataset, (c) Expert dataset

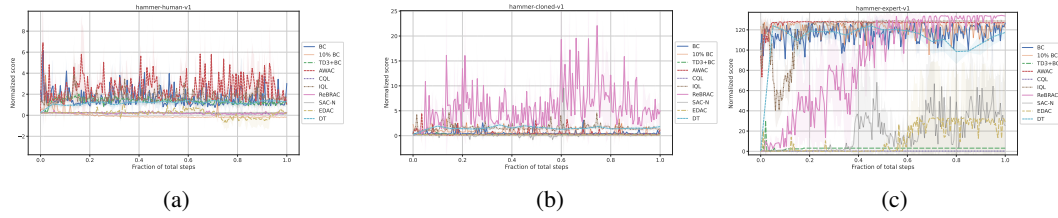


Figure 13: Training curves for Hammer task.
 (a) Human dataset, (b) Colned dataset, (c) Expert dataset

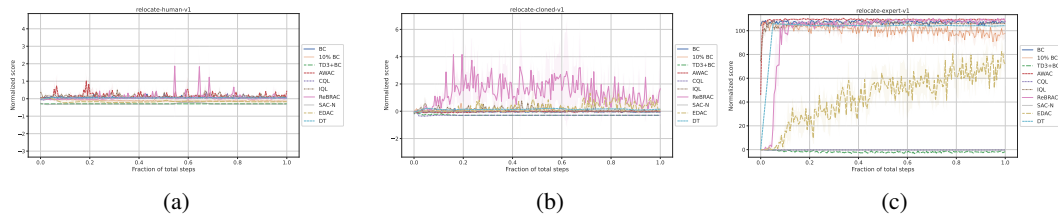


Figure 14: Training curves for Relocate task.
 (a) Human dataset, (b) Colned dataset, (c) Expert dataset

A.2 Offline-to-online

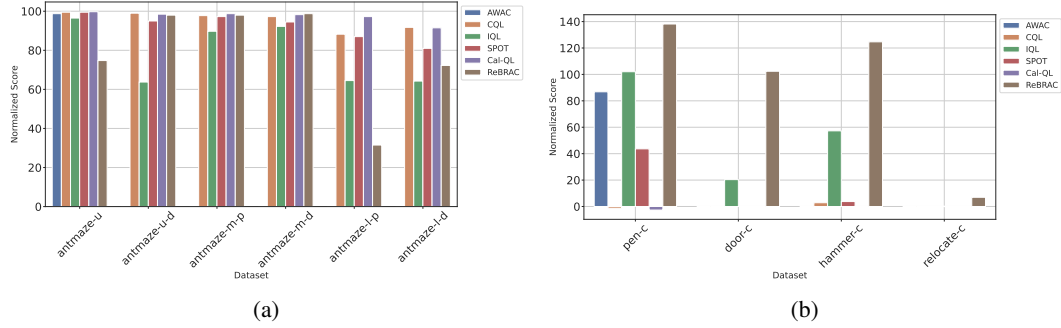


Figure 15: Graphical representation of the normalized performance of the last trained policy on D4RL after online tuning averaged over 4 random seeds.

(a) AntMaze datasets (b) Adroit datasets

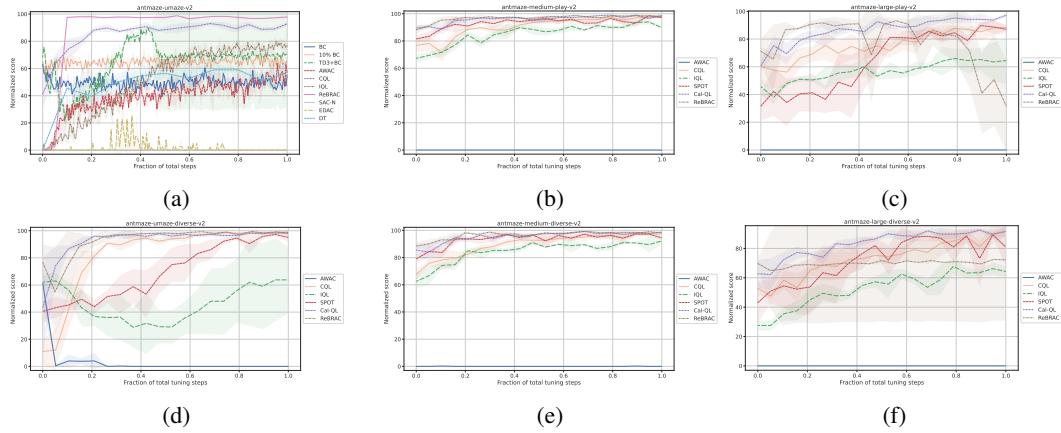


Figure 16: Training curves for AntMaze task during online tuning.

(a) Umaze dataset, (b) Medium-play dataset, (c) Large-play dataset, (d) Umaze-diverse dataset, (e) Medium-diverse dataset, (f) Large-diverse dataset

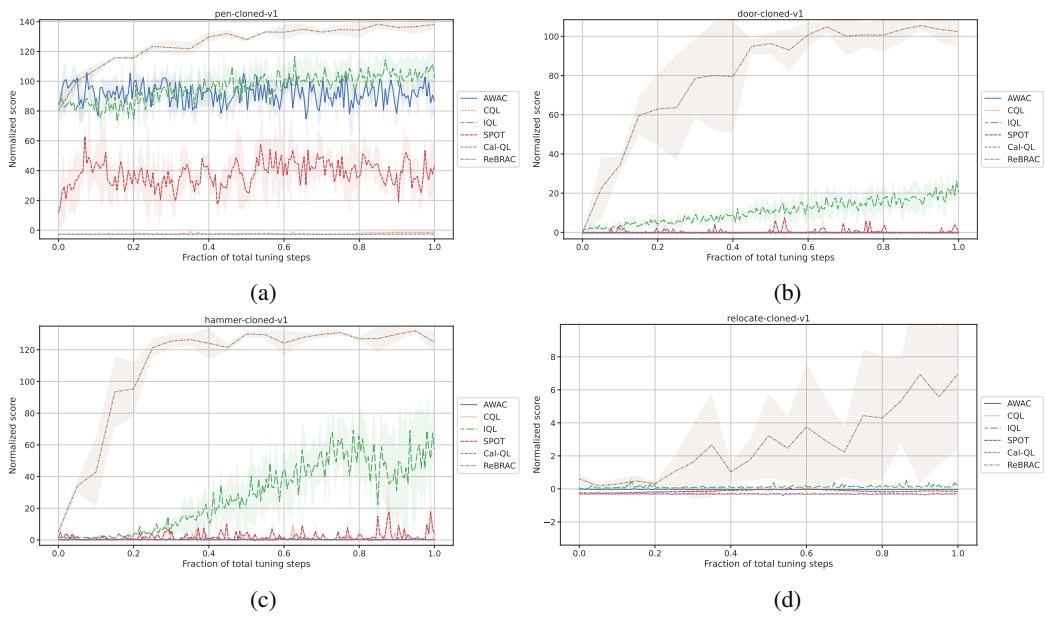


Figure 17: Training curves for Adroit Cloned task during online tuning.
 (a) Pen, (b) Door, (c) Hammer, (d) Relocate

B Weights&Biases Tracking

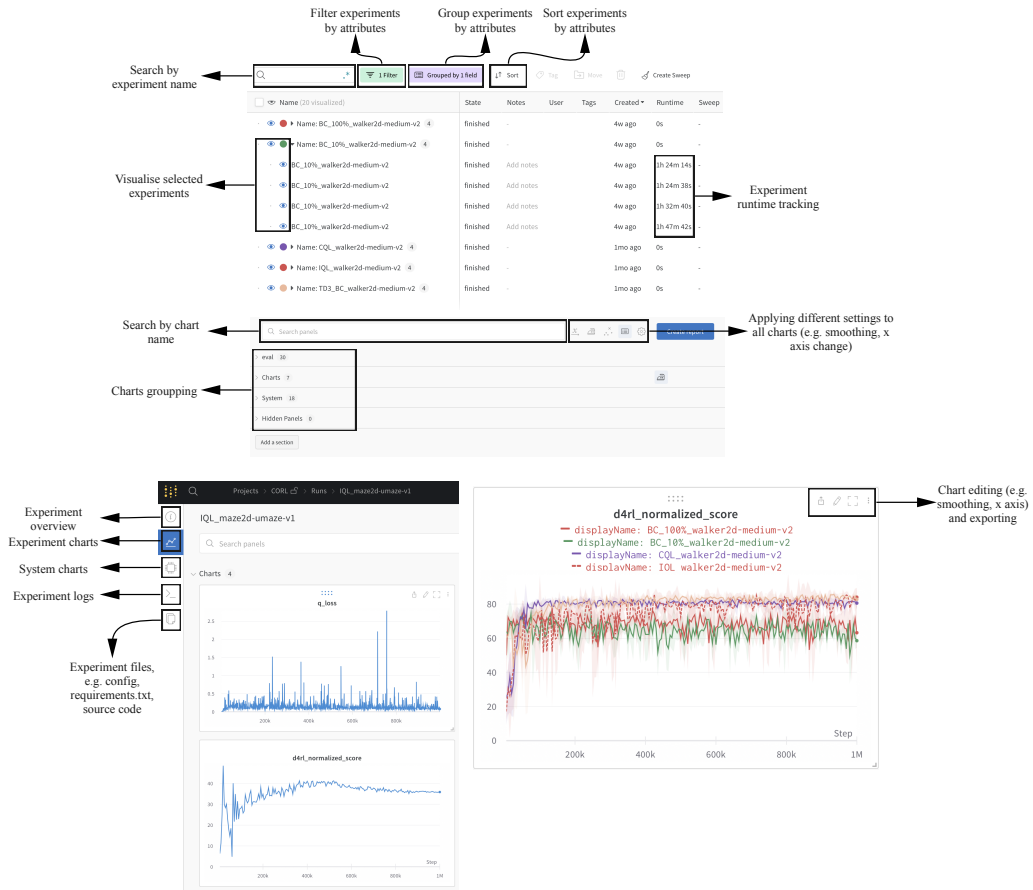


Figure 18: Screenshots of Weights&Biases experiment tracking interface.

C License

Our codebase is released under Apache License 2.0. The D4RL datasets (Fu et al., 2020) are released under Apache License 2.0.

D Experimental Details

We modify reward on AntMaze task by subtracting 1 from reward as it is done in previous works except CQL and Cal-QL, where (0, 1) are mapped into (-5, 5).

We used original implementation of TD3 + BC¹⁴, SAC- N /EDAC¹⁵, SPOT¹⁶, ReBRAC¹⁷ and custom implementations of IQL¹⁸ and CQL/Cal-QL¹⁹ as the basis for ours.

For most of the algorithms and datasets, we use default hyperparameters if available. Configuration files for every algorithm and environment are presented in our GitHub repository. Hyperparameters are also provided in subsection D.2.

All the experiments ran using V100 and A100 GPUs, which took approximately 5000 hours of compute in total.

D.1 Number of update steps and evaluation rate

Following original work, SAC- N and EDAC are trained for 3 million steps (except AntMaze, which is trained for 1 million steps) in order to obtain state-of-the-art performance and tested every 10000 steps. Decision Transformer (DT) training is splitted into datasets pass epochs. We train DT for 50 epochs on each dataset and evaluate every 5 epochs. All other algorithms are trained for 1 million steps and evaluated every 5000 steps (50000 for AntMaze). We evaluate every policy for 10 episodes on Gym-MuJoCo and Adroit tasks and for 100 for Maze2d and AntMaze tasks.

D.2 Hyperparameters

Table 5: BC and BC- N % hyperparameters. † used for the best trajectories choice.

	Hyperparameter	Value
BC hyperparameters	Optimizer	Adam (Kingma & Ba, 2014)
	Learning Rate	3e-4
	Mini-batch size	256
Architecture	Policy hidden dim	256
	Policy hidden layers	2
	Policy activation function	ReLU
BC- N % hyperparameters	Ratio of best trajectories used	0.1
	Discount factor†	1.0
	Max trajectory length†	1000

¹⁴https://github.com/sfujim/TD3_BC

¹⁵<https://github.com/snu-mlab/EDAC>

¹⁶<https://github.com/thuml/SPOT>

¹⁷<https://github.com/tinkoff-ai/ReBRAC>

¹⁸<https://github.com/gwthomas/IQL-PyTorch>

¹⁹<https://github.com/young-geng/CQL>

Table 6: TD3+BC hyperparameters.

	Hyperparameter	Value
TD3 hyperparameters	Optimizer	Adam (Kingma & Ba, 2014)
	Critic learning rate	3e-4
	Actor learning rate	3e-4
	Mini-batch size	256
	Discount factor	0.99
	Target update rate	5e-3
	Policy noise	0.2
	Policy noise clipping	(-0.5, 0.5)
	Policy update frequency	2
Architecture	Critic hidden dim	256
	Critic hidden layers	2
	Critic activation function	ReLU
	Actor hidden dim	256
	Actor hidden layers	2
	Actor activation function	ReLU
TD3+BC hyperparameters	α	2.5

Table 7: CQL and Cal-QL hyperparameters. Note: used hyperparameters are suboptimal on Adroit for the implementation we provide.

	Hyperparameter	Value
SAC hyperparameters	Optimizer	Adam (Kingma & Ba, 2014)
	Critic learning rate	3e-4
	Actor learning rate	1e-4
	Mini-batch size	256
	Discount factor	0.99
	Target update rate	5e-3
	Target entropy	-1 · Action Dim
	Entropy in Q target	False
Architecture	Critic hidden dim	256
	Critic hidden layers	5, AntMaze 3, otherwise
	Critic activation function	ReLU
	Actor hidden dim	256
	Actor hidden layers	3
	Actor activation function	ReLU
CQL hyperparameters	Lagrange	True, Maze2d and AntMaze False, otherwise
	Offline α	1.0, Adroit 5.0, AntMaze 10.0, otherwise
	Lagrange gap	5, Maze2d 0.8, AntMaze
	Pre-training steps	0
	Num sampled actions (during eval)	10
	Num sampled actions (logsumexp)	10
Cal-QL hyperparameters	Mixing ratio	0.5
	Online α	1.0, Adroit 5.0, AntMaze

Table 8: IQL hyperparameters.

	Hyperparameter	Value
IQL hyperparameters	Optimizer	Adam (Kingma & Ba, 2014)
	Critic learning rate	3e-4
	Actor learning rate	3e-4
	Value learning rate	3e-4
	Mini-batch size	256
	Discount factor	0.99
	Target update rate	5e-3
	Learning rate decay	Cosine
	Deterministic policy	True, Hopper Medium and Medium-replay False, otherwise
	β	6.0, Hopper Medium-expert 10.0, AntMaze 3.0, otherwise
τ	0.9, AntMaze 0.5, Hopper Medium-expert 0.7, otherwise	
Architecture	Critic hidden dim	256
	Critic hidden layers	2
	Critic activation function	ReLU
	Actor hidden dim	256
	Actor hidden layers	2
	Actor activation function	ReLU
	Value hidden dim	256
	Value hidden layers	2
Value activation function	ReLU	

Table 9: AWAC hyperparameters.

	Hyperparameter	Value
AWAC hyperparameters	Optimizer	Adam (Kingma & Ba, 2014)
	Critic learning rate	3e-4
	Actor learning rate	3e-4
	Mini-batch size	256
	Discount factor	0.99
	Target update rate	5e-3
	λ	0.1, Maze2d, AntMaze 0.3333, otherwise
Architecture	Critic hidden dim	256
	Critic hidden layers	2
	Critic activation function	ReLU
	Actor hidden dim	256
	Actor hidden layers	2
Actor activation function	ReLU	

Table 10: SAC- N and EDAC hyperparameters.

	Hyperparameter	Value
SAC hyperparameters	Optimizer	Adam (Kingma & Ba, 2014)
	Critic learning rate	3e-4
	Actor learning rate	3e-4
	α learning rate	3e-4
	Mini-batch size	256
	Discount factor	0.99
	Target update rate	5e-3
	Target entropy	-1 · Action Dim
Architecture	Critic hidden dim	256
	Critic hidden layers	3
	Critic activation function	ReLU
	Actor hidden dim	256
	Actor hidden layers	3
	Actor activation function	ReLU
SAC- N hyperparameters	Number of critics	10, HalfCheetah
		20, Walker2d
		25, AntMaze
		200, Hopper Medium-expert, Medium-replay
		500, Hopper Medium
EDAC hyperparameters	Number of critics	10, HalfCheetah
		10, Walker2d, AntMaze
		50, Hopper
		5.0, HalfCheetah Medium-expert, Walker2d Medium-expert
		1.0, otherwise
	μ	

Table 11: DT hyperparameters.

	Hyperparameter	Value	
DT hyperparameters	Optimizer	AdamW (Loshchilov & Hutter, 2017)	
	Batch size	256, AntMaze 4096, otherwise	
	Return-to-go conditioning	(12000, 6000), HalfCheetah (3600, 1800), Hopper (5000, 2500), Walker2d (160, 80), Maze2d umaze (280, 140), Maze2d medium and large (1, 0.5), AntMaze (3100, 1550), Pen (2900, 1450), Door (12800, 6400), Hammer (4300, 2150), Relocate	
	Reward scale	1.0, AntMaze 0.001, otherwise	
	Dropout	0.1	
	Learning rate	0.0008	
	Adam betas	(0.9, 0.999)	
	Clip grad norm	0.25	
	Weight decay	0.0003	
	Total gradient steps	100000	
	Linear warmup steps	10000	
	Architecture	Number of layers	3
		Number of attention heads	1
		Embedding dimension	128
Activation function		GELU	

Table 12: SPOT hyperparameters.

	Hyperparameter	Value
VAE hyperparameters	Optimizer	Adam (Kingma & Ba, 2014)
	Learning rate	1e-3
	Mini-batch size	256
	Number of iterations	10^5
	KL term weight	0.5
	Encoder hidden dim	750
VAE architecture	Encoder layers	3
	Latent dim	$2 \times \text{action dim}$
	Decoder hidden dim	750
	Decoder layers	3
TD3 hyperparameters	Optimizer	Adam (Kingma & Ba, 2014)
	Critic learning rate	3e-4
	Actor learning rate	1e-4
	Mini-batch size	256
	Discount factor	0.99
	Target update rate	5e-3
	Policy noise	0.2
	Policy noise clipping	(-0.5, 0.5)
	Policy update frequency	2
	Architecture	Critic hidden dim
Critic hidden layers		2
Critic activation function		ReLU
Actor hidden dim		256
Actor hidden layers		2
Actor activation function		ReLU
SPOT hyperparameters	λ	0.05, 0.1, 0.2, 0.5, 1.0, 2.0, AntMaze 1.0, Adroit