

---

# ManiSkill-HAB: A Benchmark for Low-Level Manipulation in Home Rearrangement Tasks

---

Anonymous Author(s)

Affiliation

Address

email

## Abstract

High-quality benchmarks are the foundation for embodied AI research, enabling significant advancements in long-horizon navigation, manipulation and rearrangement tasks. However, as frontier tasks in robotics get more advanced, they require faster simulation speed, more intricate test environments, and larger demonstration datasets. To this end, we present MS-HAB, a holistic benchmark for low-level manipulation and in-home object rearrangement. First, we provide a GPU-accelerated implementation of the Home Assistant Benchmark (HAB). We support realistic low-level control and achieve over 3x the speed of prior magical grasp implementations at a fraction of the GPU memory usage. Second, we train extensive reinforcement learning (RL) and imitation learning (IL) baselines for future work to compare against. Finally, we develop a rule-based trajectory filtering system to sample specific demonstrations from our RL policies which match predefined criteria for robot behavior and safety. Combining demonstration filtering with our fast environments enables efficient, controlled data generation at scale.

## 1 Introduction

An important goal of embodied AI is to create robots that can solve manipulation tasks in home-scale environments. Recently, faster and more realistic simulation, home-scale rearrangement benchmarks, and large robot datasets have provided important platforms to accelerate research towards this goal. However, there remains a need for all of these features in one unified benchmark.

We present **MS-HAB**<sup>1</sup>, a holistic, home-scale manipulation benchmark with four key features: (1) fast simulation with realistic physics and manipulation, including low-level control, for efficient training, evaluation, and dataset generation, (2) home-scale manipulation tasks through the Home Assistant Benchmark (HAB) (Szot et al., 2021), (3) extensive baselines for future work to compare against, and (4) scalable, controlled data generation using automated, rule-based trajectory filtering.

**Fast Manipulation Simulation with Realistic Physics and Rendering:** Using ManiSkill3 (Tao et al., 2024), we implement a GPU-accelerated version of the HAB (Szot et al., 2021), an apartment-scale rearrangement benchmark containing three long-horizon tasks using the Fetch mobile manipulator (ZebraTechnologies, 2024). While the original HAB uses magical grasp (teleport closest object within 15cm to the gripper), we require realistic grasping.

The MS-HAB environments support low-level control for realistic grasping, manipulation, and interaction, while the original Habitat 2.0 implementation does not support such kind of low-level control. Furthermore, by scaling parallel environments, MS-HAB environments achieve over 4300 samples per second (SPS) while the robot actively collides with multiple dynamic objects and the environment renders 2 128x128 RGB-D images — 3x faster than Habitat 2.0 at a fraction of the GPU memory usage. This significant speedup allows us to scale training, evaluation, and data generation.

---

<sup>1</sup>Supplementary website available [here](#). Full website, include code and dataset, available once de-anonymized.

**Reinforcement Learning (RL) Baselines:** Online RL provides a promising framework to learn from online interaction without needing preexisting demonstration data. As in Gu et al. (2023a), we train individual mobile manipulation skills and chain them to solve long-horizon tasks. We hand-engineer dense rewards for the Fetch embodiment, designed for low-level control with mobile manipulation. Furthermore, we train manipulation policies overfit to one specific object’s geometry, outperforming all-object policies when grasping many objects or in conditions with tight tolerances depending on object geometry. Leveraging our fast environments, we run extensive RL baselines, training 150 policies across 3 seeds (50 policies/seed) with 1.83 billion environment samples.

**Automated Event Labeling and Trajectory Categorization:** We use privileged information from the simulator to distill trajectories into chronologically ordered lists of events (e.g. Pick events include ‘Contact (object)’, ‘Grasped’, ‘Dropped’, ‘Success’, and ‘Excessive (robot) Collisions’). Using these events lists, we define mutually exclusive, collectively exhaustive success and failure modes. For example, Pick success mode “reach success  $\wedge$  cumulative robot collisions  $< 5000$  N  $\wedge$  object not dropped” requires events list (Contact, Grasp, Success) and forbids events ‘Dropped’ and ‘Excessive Collisions’. We filter our dataset by selecting demonstrations labeled with success modes that guarantee particular behaviors (e.g. pick without dropping) and safety constraints (e.g. cumulative robot collisions  $< 5000$  N). Furthermore, we provide trajectory categorization statistics for all baselines in Appendix A.6 so future work can gear its methodology to solve frequent failure modes discovered by our policies.

**Dataset Generation and Imitation Learning (IL) Baselines:** When generating our dataset, we use trajectory categorization to filter demonstrations without needing manual labor, and we provide Imitation Learning (IL) baselines using our dataset. Our results show that selecting demonstrations with particular behavior biases IL policies towards that behavior. Paired with our fast simulator, users can generate massive datasets and control demonstration type in fast wall-clock time.

**Summary of Contributions:** The contributions of MS-HAB are summarized as follows: 1) GPU-accelerated HAB implementation which supports realistic low-level control and achieves over 4300 SPS while interacting and rendering, 2) extensive RL and IL baselines, 3) automated event labeling and trajectory categorization, providing success and failure mode statistics for all baseline policies, and 4) efficient, controlled vision-based robot dataset generation at scale.

## 2 Related Work

**Simulators and Scene-Level Embodied AI Platforms:** Earlier scene-level simulators focus on navigation and simple interaction with realistic visuals (Savva et al., 2019). Other simulators add kinematic object state transitions (Kolve et al., 2017; Li et al., 2021), significant scene randomization (Deitke et al., 2022; Nasiriany et al., 2024), soft-body physics and audio (Gan et al., 2022), flexible and deformable materials, object composition rules, and so on (Li et al., 2022). However such complicated features often slow down simulation speed.

Habitat 2.0 forgoes additional features, supporting rigid-body dynamics, articulations, and magical grasping, to achieve best-in-class single-process scene-level simulation speed (Szot et al., 2021). However, it is constrained by the limited parallelization of CPU simulation.

Other simulators focus on low-level, contact-rich control in simpler settings (James et al., 2020; Zhu et al., 2020; Xiang et al., 2020). ManiSkill3 in particular achieves state-of-the-art GPU simulation speed (Tao et al., 2024), however its suite of tasks are simpler than the Home Assistant Benchmark (HAB) (Szot et al., 2021), which we implement for MS-HAB.

**Scalable Demonstration Datasets:** Real-world robot datasets are promising for direct deployment to the real world (Brohan et al., 2023). However, these initiatives are limited in scaling and use cases due to small-scale toy setups (Ebert et al., 2022), vision-only data (Dasari et al., 2019), or requiring massive coordinated (et al., 2024; Khazatsky et al., 2024) or distributed (Mandlekar et al., 2018) human effort over many months or even years. Furthermore, real robot datasets cannot efficiently generate new data, and do not support online sampling.

Generative interactive world models allow some interactivity on similarly realistic data by generating new frames based on provided actions (Yang et al., 2024). However, these models suffer from artifacts and long-term memory issues which rule out home-scale rearrangement, and low frame rates make training high-frequency low-level control policies intractable. Furthermore, neither real-robot datasets

nor generative world models currently support querying privileged data from a simulator, which is necessary for MS-HAB’s automated event labeling and trajectory categorization.

Meanwhile, classical physical simulation supports data generation from a variety of sources (expert teleoperated, suboptimal human, etc), and machine-generated data is largely scalable; however, datasets like Fu et al. (2020); Mandlekar et al. (2021); Gu et al. (2023b) only support smaller-scale continuous control tasks.

RoboCasa combines different aspects of above approaches (Nasiriany et al., 2024): a physical simulator, diverse AI-generated textures and models, 1250 human-teleoperated demonstrations, and MimicGen to scale data (Mandlekar et al., 2023). However, RoboCasa achieves only 31.9 SPS *without rendering*, does not support filtering trajectories by behavior, and its demonstrations alternate between manipulation and navigation. Meanwhile, we achieve 125x faster simulation *while rendering* 2 128x128 RGB-D images *and interacting* with multiple dynamic objects. We also support automated filtering under customizable constraints, and our demonstrations use whole-body control.

**Skill Chaining:** Chen et al. (2023) and Lee et al. (2021) use finetuning methods to bias the initial and terminal state distributions to increase handoff success while skill chaining. However, these methods are applied to tasks with unchanging order (e.g. furniture assembly, block orient/grasp/insert). Meanwhile, Gu et al. (2023a) formulate composable and reusable skills with mobility to create greater overlap in initial and terminal state distributions, achieving better results than stationary manipulation. However, Gu et al. (2023a) uses magical grasp with online RL, while we provide RL and IL baselines, and we include additional considerations for low-level grasping, such as new rewards and subtask success conditions, sampling grasp poses from Pick policies, and overfitting object manipulation policies to specific object geometries.

## 3 Preliminaries

### 3.1 Tasks, Subtasks, and Policies

The Home Assistant Benchmark (HAB) (Szot et al., 2021) includes three long-horizon tasks which involve rearranging objects from the YCB dataset (Çalli et al., 2015):

- **TidyHouse:** Move 5 target objects to different open receptacles (e.g. table, counter, etc).
- **PrepareGroceries:** Move 2 objects from the opened fridge to goal positions on the counter, then 1 object from the counter to the fridge.
- **SetTable:** Move 1 bowl from the closed drawer to the dining table and 1 apple from the closed fridge to the same dining table.

To solve these tasks, Szot et al. (2021) define parameterized skills: Pick, Place, Open Fridge/Drawer, Close Fridge/Drawer, and Navigate. For each skill, we define corresponding subtasks. Successful low-level grasping is heavily dependent on an object’s pose. So, depending on the subtask, the simulator provides ground-truth pose  $x_{pose} = [x_{rot}|x_{pos}]$  for target object  $x$ , ground-truth handle position  $a_{pos}$  for target articulation  $a$ , or 3D goal position  $g_{pos}$ , updated each timestep during manipulation. Each subtask also fails if the robot cumulative force reaches beyond a set threshold. For more details, see Appendix A.1. We provide brief descriptions of the subtasks below:

- **Pick** $[a, \text{optional}](x_{pose})$ : pick object  $x$  (from articulation  $a$ , if provided).
- **Place** $[a, \text{optional}](x_{pose}, g_{pos})$ : place object  $x$  in goal  $g$  (in articulation  $a$ , if provided)
- **Open** $[a](a_{pos})$ : open articulation  $a$  with handle at  $a_{pos}$
- **Close** $[a](a_{pos})$ : close articulation  $a$  with handle at  $a_{pos}$
- **Nav** $(*_{pos})$ : navigate to  $*$

From a reinforcement learning perspective, we formulate each long-horizon task as a standard Markov Decision Process (MDP) which can be described as a tuple  $\mathcal{M} = (\mathcal{S}, \mathcal{A}, \mathcal{R}, \mathcal{T}, \rho, \gamma)$  with continuous state space  $\mathcal{S}$ , action space  $\mathcal{A}$ , scalar reward function  $\mathcal{R} : \mathcal{S} \times \mathcal{A} \rightarrow \mathbb{R}$ , environment dynamics function  $\mathcal{T} : \mathcal{S} \times \mathcal{A} \rightarrow \mathcal{S}$ , initial state distribution  $\rho$ , and discount factor  $\gamma \in [0, 1]$ . Then, as in Gu et al. (2023a), define a subtask  $\omega$  as a smaller MDP  $(\mathcal{S}, \mathcal{A}_\omega, \mathcal{R}_\omega, \mathcal{T}, \rho_\omega, \gamma)$  derived from  $\mathcal{M}$ . For each task  $\mathcal{M}$  with subtask  $\omega$ , we train low-level control policy  $\pi_\omega : \mathcal{S} \rightarrow \mathcal{A}_\omega$  with RL or IL.

In this work, we study a partially observable variant of each task, where the policy must use 2 128x128 depth images to infer collisions and obstructions. We train different policies for each task/subtask combination (i.e., TidyHouse Pick, PrepareGroceries Pick, etc). Additionally, we train Pick and Place RL policies to overfit to specific objects, i.e., one policy for each task/subtask/object combination. Since this work focuses on low-level control, for the Pick, Place, Open, and Close subtasks the mobile base is fully simulated, while we use a teleport for the cross-apartment Navigation subtask. Additional details are provided in Sec. 5.1.

### 3.2 Skill Chaining

Similar to Szot et al. (2021), we split each task into a sequence of subtasks using a perfect task planner. The sequences are defined below:

- **TidyHouse:** For  $(x_i, g_i) \in \{(x_0, g_0), \dots, (x_4, g_4)\}$ , complete:  
 $\text{Nav}(x_{i, \text{pos}}) \rightarrow \text{Pick}(x_{i, \text{pose}}) \rightarrow \text{Nav}(g_{i, \text{pos}}) \rightarrow \text{Place}(x_{i, \text{pose}}, g_{i, \text{pos}})$
- **PrepareGroceries:** For  $(x_i, g_i) \in \{(x_0, g_0), (x_1, g_1), (x_2, g_2)\}$ , complete:  
 $\text{Nav}(x_{i, \text{pos}}) \rightarrow \text{Pick}_{\text{Fr}[i \leq 1]}(x_{i, \text{pose}}) \rightarrow \text{Nav}(g_{i, \text{pos}}) \rightarrow \text{Place}_{\text{Fr}[i=2]}(x_{i, \text{pose}}, g_{i, \text{pos}})$
- **SetTable:** For  $(x_i, g_i, a_i) \in \{(x_0, g_0, \text{Dr}), (x_0, g_0, \text{Fr})\}$ , complete:  
 $\text{Nav}(a_{i, \text{pos}}) \rightarrow \text{Open}_{a_i}(a_{i, \text{pos}}) \rightarrow \text{Nav}(x_{i, \text{pos}}) \rightarrow \text{Pick}(x_{i, \text{pose}}) \rightarrow \text{Nav}(g_{i, \text{pos}}) \rightarrow \text{Place}(x_{i, \text{pose}}, g_{i, \text{pos}}) \rightarrow \text{Nav}(a_{i, \text{pos}}) \rightarrow \text{Close}_{a_i}(a_{i, \text{pos}})$

### 3.3 Train and Validation Splits

The ReplicaCAD dataset (Szot et al., 2021) serves as the source for our apartment scenes. It comprises 105 scenes divided into 5 macro-variations, each containing 21 micro-variations. Macro-variations alter the layout of large furniture items such as refrigerators and kitchen counters, while micro-variations modify the placement of smaller furnishings like chairs and TV stands. The dataset is split into three parts: 3 macro-variations for training, 1 for validation, and 1 for testing. However, as the test split is not publicly accessible, our study utilizes only the train and validation splits.

Furthermore, for each long-horizon task, HAB provides 10,000 training episode configurations and 1,000 validation configurations. These configurations specify initial poses for YCB objects and define target objects, articulations, and goals. Importantly, these configurations exclusively utilize ReplicaCAD scenes from their respective splits.

## 4 Environment Design and Benchmarks

By scaling parallel environments with GPU simulation, MS-HAB achieves 4300 SPS on a benchmark involving representative interaction with dynamic objects — 3x Habitat 2.0’s implementation. Our environments support realistic low-level control for successful grasping, manipulation, and interaction, while the Habitat 2.0 environments do not support such kind of low-level control. This section outlines environment design choices which leverage GPU acceleration and benchmarks MS-HAB against Habitat’s implementation.

### 4.1 Environment Design

**Evaluation and Training Environments:** First, we provide the base evaluation environment, `SequentialTask`, which supports executing different subtasks simultaneously on GPU. We perform physics simulation and rendering for all environments in parallel, then slice data by subtask to compute success and fail conditions. It does not support dense reward or spawn selection/rejection.

Second, we provide training environments for each subtask, `{SubtaskName}SubtaskTrain`, which extend the main evaluation environment. Each training environment provides dense rewards hand-engineered for the Fetch embodiment, supports spawning with randomization and rejection, and incorporates any additional features needed for training specific subtask skills.

**Observation Space:** We include target object pose, goal position, and TCP pose relative to the base, an indicator of whether the target object is grasped, 128x128 head and arm RGB-D images, and robot proprioception. For our experiments, we use only depth images. As is standard for the ManiSkill

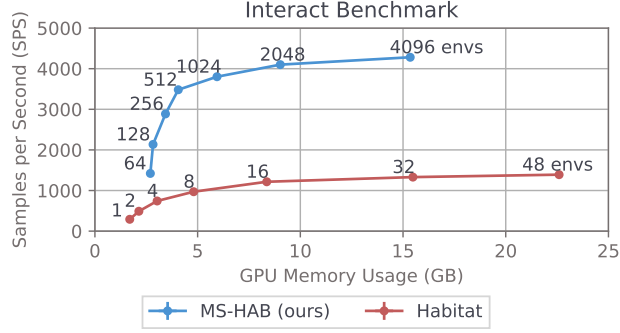


Figure 1: Interact benchmark comparing MS-HAB (ours) with Habitat. Each data point is annotated with the number of parallel environments used. SPS and GPU memory usage for each data point are averaged over 10 seeds; error bars representing 95% CIs are plotted, but are too small to see. Thanks to GPU acceleration, MS-HAB scales parallel environments to achieve over 3x the performance of Habitat while using a fraction of the GPU memory.

185 suite of tasks, the simulator computes ground-truth poses. We keep a consistent observation space  
 186 across all subtasks via masking to support different subtasks running in parallel.

187 **Action Space:** We fully actuate the Fetch embodiment’s arm, torso, and head pan/tilt joints. We  
 188 support joint-based controllers and end-effector-based controllers. For our experiments, we use a  
 189 PD joint delta position controller for the arm, torso, and head joints. The agent provides linear and  
 190 angular velocity to control the base. The action space is normalized to  $[-1, 1]$ .

191 **Additional Details:** Our environments load the ReplicaCAD dataset provided by Habitat 2.0.  
 192 However, since Habitat 2.0 uses magical grasp, the original ReplicaCAD dataset’s collision meshes  
 193 do not include handles for the kitchen drawers and fridge. So, we alter these collision meshes to  
 194 include handles based on the provided visual meshes. We additionally provide navigable position  
 195 meshes for the Fetch embodiment with Trimesh, as ManiSkill3 does not currently support navmeshes.

## 196 4.2 Benchmarking

197 We adapt Habitat 2.0’s Interact benchmark, which originally had the Fetch robot execute a precom-  
 198 puted trajectory to collide with two dynamic objects (Szot et al., 2021). While we retain the same  
 199 precomputed trajectory, assets, and scene configuration, we modify the robot’s initial pose and disable  
 200 magical grasp, allowing it to interact with five objects instead. Our setup includes two mounted  
 201 128x128 RGB-D cameras, with a simulation frequency of 100Hz and a control frequency of 20Hz  
 202 (the standard for low-level control in ManiSkill3). We collect observation data from vectorized  
 203 environments at each `step()` call. Our benchmarking is conducted on a machine equipped with a  
 204 16-core/32-thread Intel i9-12900KS processor and an Nvidia RTX 4090 GPU with 24 GB VRAM.

205 It is important to note that running the *exact* same episode in different simulators is exceedingly  
 206 difficult since different simulation backends will result in interactions and collisions behaving slightly  
 207 differently. Still, the full rollout is similar in both simulators, and the measured performance increase  
 208 of MS-HAB in an interactive setting is significant.

209 **Habitat’s Additional Optimizations:** While the Habitat simulator already has best-in-class single  
 210 process simulation speed, it provides optional additional optimizations: concurrent rendering and  
 211 auto sleep. However, their experiments suggest that concurrent rendering can negatively impact train  
 212 performance (Szot et al., 2021), so we enable auto-sleep and disable concurrent rendering.

213 **Benchmark Analysis:** Per Fig. 1, while Habitat achieves stronger performance per parallel envi-  
 214 ronment, its peak performance is limited to  $1397.65 \pm 11.02$  SPS at 22.60 GB VRAM due CPU  
 215 simulation’s parallelization limitations and a less efficient renderer. Meanwhile, by scaling up to  
 216 4096 environments, MS-HAB is able to achieve  $4299.18 \pm 26.36$  SPS at 15.35 GB VRAM usage —  
 217 3.08x faster with 32% less VRAM. Furthermore, our environments support realistic low-level control  
 218 for successful grasping, manipulation, and interaction, while the Habitat 2.0 environments do not  
 219 support such kind of low-level control.



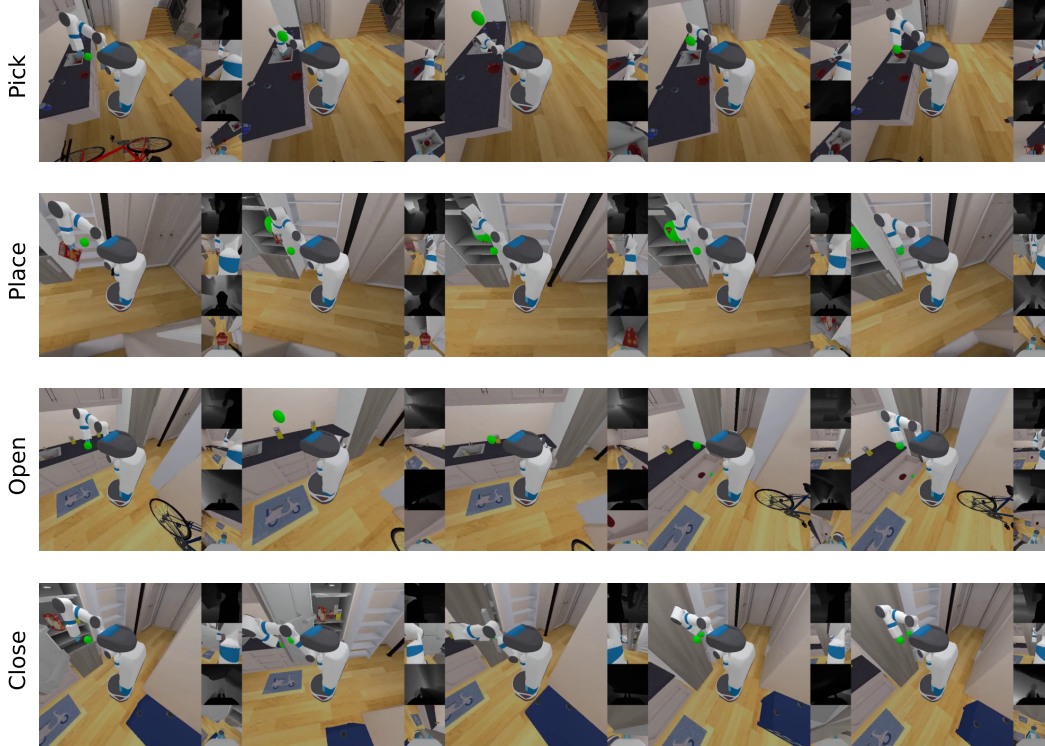


Figure 2: Renders of low-level, whole-body control policies solving Pick, Place, Open, and Close subtasks. We render 1 512x512 image and 4 128x128 sensor images. Note the base’s moving position relative to surroundings. Goal spheres are invisible to sensors. Full videos in supplementary.

## 220 5 Methodology

### 221 5.1 Training Reinforcement Learning Policies

222 We choose Reinforcement Learning (RL) to learn our subtask policies as RL does not require prior  
 223 demonstration data, and it can take advantage of our highly parallelized environments to solve tasks in  
 224 fast wall-clock time. We use a similar subtask formulation as M3, which trains mobile manipulation  
 225 skills to solve each subtask from a region of spawn points.

226 **Pick:** Without magical grasp, our Pick policies must learn grasp poses which are valid, stable, and  
 227 reachable within the kinematic constraints of the mobile Fetch robot. Furthermore, the policy must  
 228 learn action sequences which can reach these grasp poses and retrieve the target object within the  
 229 specified horizon while keeping the robot under the cumulative collision force limit.

230 As a result, learning successful grasping for multiple objects with different geometries — in addition  
 231 to whole body control with collision constraints — is difficult. So, we opt to train individual Pick  
 232 policies for each object, thereby overfitting to the geometry of that object. Our experiments show  
 233 these per-object Pick policies achieve improved subtask success rates compared to all-object policies  
 234 when handling many objects with varied geometries. In other words, we train a unique per-object  
 235 Pick policy for every task/subtask/object combination.

236 **Place:** We train per-object Place policies as well. Our experiments show that, in settings where object  
 237 geometry is more important (e.g. placing in a fridge with tighter tolerances), per-object Place policies  
 238 reach higher success rates than all-object policies.

239 Additionally, without magical grasp, there is not a ground-truth means of spawning the robot while  
 240 grasping an object. So, we train our Pick policies before Place, then we sample grasp poses from our  
 241 Pick policies to initialize the robot in the Place subtask.

**Open and Close:** Following (Gu et al., 2023a), we train different Open and Close policies for the kitchen drawer and the fridge. Furthermore, we find that opening the kitchen drawer is particularly difficult due to its small handle. So, we perturb the initial state distribution of our Open kitchen drawer subtask during training to accelerate learning: 10% of the time, we initialize the kitchen drawer opened 20% of the way. During evaluation, we do not alter the initial states.

**Algorithms and Hyperparameters:** We stack 3 consecutive frames for image observations to handle partial observability.

We train Pick and Place using SAC (Haarnoja et al., 2018; Xing, 2022) with a 1m replay buffer size. Visual observations are encoded by D4PG’s 4-layer CNN (Barth-Maron et al., 2018) and concatenated with state observations. Actor and critic networks are 3-layer MLPs and the critic has LayerNorm to avoid value divergence (Ball et al., 2023). We train Pick with 50M timesteps and Place with 25M timesteps.

We train Open and Close using PPO (Schulman et al., 2017; Huang et al., 2022). Visual observations are encoded by a NatureCNN (Mnih et al., 2015) and concatenated with state observations. The actor and critic networks are 2-layer MLPs. We train Open Fridge with 15M timesteps, Open Drawer with 50M timesteps, Close Fridge with 25M timesteps, and Close Drawer with 15M timesteps.

We train 3 seeds for each task/subtask/object combination, evaluating on 189 episodes every 100,000 train samples. We select the checkpoint with highest evaluation success once rate as our final policy.

**Metrics:** We run 1000 episodes for every evaluation run (task/subtask evaluation, ablations, etc).

We evaluate subtask policies (Pick, Place, Open, Close) by success once rate (%), which is the percentage of trajectories that achieve success at least once in an episode with 200 timesteps. We evaluate long-horizon task success (TidyHouse, PrepareGroceries, SetTable) by Progressive Completion Rate (%). Here, the success of each subtask requires the success of every previous subtask. Hence, the completion rate of the final subtask is the completion rate of the entire long-horizon task.

While the mobile base is fully simulated for Pick, Place, Open, and Close, since we are primarily interested in low-level control, we replace cross-apartment Navigation with a simple teleport. The robot is teleported to the target location with the same arm, base pose, and spawn location randomizations as in subtask training, described in Appendix A.1. In long-horizon tasks, we move to the next subtask as soon as the current subtask achieves success.

## 5.2 Automated Trajectory Categorization and Dataset Generation

Thanks to fast simulation environments, we can quickly generate 10s to 100s of thousands of demonstrations. However, our experiments show that our Imitation Learning (IL) policies are sensitive to demonstration behavior. To filter out “suboptimal” demonstrations, we use privileged information from our simulator to group demonstrations into mutually exclusive, collectively exhaustive success and failure modes without significant manual labor. Furthermore, we use this trajectory labeling system to identify types and causes of failure in our baseline policies in Sec. 6.2 and Appendix A.6.

**Example of Pick Subtask:** We provide a high-level overview of trajectory labeling on the Pick subtask. For detailed definitions of events and labels, see Appendix A.6. First, we define “events” which occur at any timestep  $t$ : 1) Contact: nonzero robot/target pairwise force, 2) Grasp: object not grasped at step  $t - 1$  and grasped at step  $t$ , 3) Dropped: object grasped at step  $t - 1$  and not grasped at step  $t$ , and 4) Excessive Collisions: robot cumulative force exceeds 5000 N. For Pick trajectory  $\tau_{pick} = (s_0, a_0, \dots, s_n, a_n)$ , we create chronologically ordered event list  $E_{pick} = (e_1, \dots, e_k)$ .

Next, we define success and failure modes. For example, one success mode is “straightforward success” with  $E_{pick} = (\text{Contact}, \text{Grasp}, \text{Success})$ , requiring success without dropping the object or colliding too much. One failure mode is “dropped failure,” defined as  $(\text{Excessive Collisions} \notin E_{pick}) \wedge (\text{Dropped} \in E_{pick}) \wedge (i < j \text{ for maximal } i, j \text{ such that } e_i = \text{Grasped}, e_j = \text{Dropped})$ . “Dropped failure” trajectories fail because the robot irrecoverably drops the target object.

In generating our Pick subtask dataset, we apply filters to include only “straightforward success” trajectories. These trajectories are characterized by the absence of dropping and minimal collisions. As the dataset generation code is publicly available, users have the flexibility to create their own datasets with custom constraints tailored to their specific requirements.

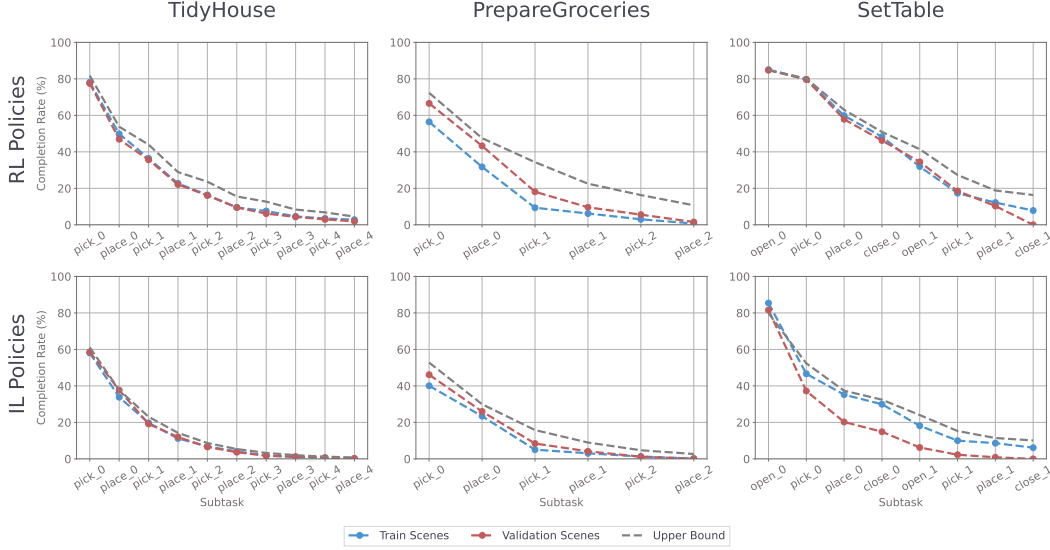


Figure 3: Long-horizon task progressive completion rates (%) on train and validation splits averaged over 1000 episodes. Furthermore, we provide an ‘upper bound’ on performance based on the success rates of each subtask policy. Best viewed zoomed.

294 **Imitation Learning Baselines:** We train IL baselines on our dataset using Behavior Cloning (BC)  
 295 (Bain & Sammut, 1995; Ross et al., 2011; Daftary et al., 2016) (implementation based on Huang  
 296 et al. (2022)). Visual observations are encoded by the 5-layer CNN from Bojarski et al. (2016), then  
 297 concatenated with state observations. The actor network is a 3-layer MLP.

298 **Dataset Size:** With fast environments and automated trajectory filtering, users can generate as many  
 299 10s or 100s of thousands of demonstrations as needed in a controlled manner. For our baselines, we  
 300 generate 1000 demonstrations per task/subtask/object combination using our per-object RL policies  
 301 on the train split. The filters used are listed in Appendix A.6.1, with definitions in Appendix A.6.2.

## 302 6 Results

### 303 6.1 Baselines

304 Fig. 3 shows the RL and IL policies’ progressive completion rate. We provide an optimistic upper  
 305 bound on progressive completion rate by (incorrectly) assuming that the completion of each subtask  
 306 is independent of every other subtask, thus directly multiplying subtask success once rates. Table 1  
 307 shows success once rate for individual subtasks. We find 4 major avenues for improvement.

308 First, our optimistic upper bound shows low expected success rate on the long-horizon tasks. Even  
 309 with per-object RL policies, our low-level mobile manipulation subtasks are difficult to train on dense  
 310 reward, and improving subtask success rate is the most direct way to improve overall task completion  
 311 rate. Second, TidyHouse and SetTable RL baselines have some gap between upper bound and real  
 312 completion rate, indicating potential handoff issues or disturbance to prior target objects in success  
 313 states. Meanwhile, the PrepareGroceries RL baseline has a large drop in completion rate during the  
 314 second Pick<sub>Fr</sub> subtask, indicating that the first Pick<sub>Fr</sub> causes too much disturbance to objects in the  
 315 fridge. So, improving policy performance in cluttered spaces is important. Third, our IL policies  
 316 perform notably worse in Pick and Place, indicating a need for methods and architectures which can  
 317 handle multimodalities in the data. Finally, while most RL policies generalize well to the validation  
 318 split, the Close Fridge policy completely fails on validation scenes because the fridge door opens into  
 319 a wall, preventing the arm from reaching the handle. This is not an issue with magical grasping (Gu  
 320 et al., 2023a), indicating that low-level control may need more scene diversity.



Table 1: Subtask success once rates for RL and IL baselines. The RL-Per vs All column shows the difference in per-object RL policy performance and its all-object counterpart. We do not train all-object policies for Open or Close subtasks.

TASK	SUBTASK	SPLIT	RL-PER	RL-ALL	IL	RL-PER vs ALL
TidyHouse	Pick	Train	81.75	71.63	61.11	+10.12
		Val	77.48	68.15	59.03	+9.33
	Place	Train	65.77	63.69	61.81	+2.08
		Val	65.97	66.07	63.79	-0.10
Prepare Groceries	Pick	Train	66.57	51.88	44.64	+14.69
		Val	72.32	62.10	52.78	+10.22
	Place	Train	60.22	53.37	50.00	+6.85
		Val	65.67	58.63	56.75	+7.04
SetTable	Pick	Train	80.85	75.69	60.71	+5.16
		Val	88.49	79.86	72.62	+4.63
	Place	Train	73.31	72.82	71.23	+0.49
		Val	67.06	68.25	62.20	-1.19
	Open <sub>Fr</sub>	Train	83.43	-	74.01	-
		Val	88.10	-	53.67	-
	Open <sub>Dr</sub>	Train	84.92	-	79.86	-
		Val	84.52	-	78.57	-
	Close <sub>Fr</sub>	Train	86.81	-	86.90	-
		Val	0.00	-	0.00	-
	Close <sub>Dr</sub>	Train	88.79	-	88.39	-
		Val	89.29	-	87.60	-

## 6.2 Ablations

### 6.2.1 RL Policies: All-Object vs Per-Object Policies

The goal of training per-object RL policies for Pick and Place is to improve subtask success rate since policies with higher success rates allow us to generate successful demonstrations under more initialization conditions. To verify this, we run two ablations.

**Does training per-object Pick and Place policies improve subtask success rate compared to all-object policies?** Per Table 1, per-object policies perform notably better in TidyHouse and Prepare Groceries Pick, which involve 9 objects, with more modest improvement in SetTable Pick, which has only 2 objects. Per-object policies perform significantly better in PrepareGroceries Place, which involves placing with tight tolerances on a cluttered fridge shelf, while performance differences are negligible in TidyHouse and SetTable Place, which only involve open receptacles. So, per-object Pick and Place policies learn improved manipulation when grasping a greater variety of objects, or when manipulating objects in areas with tighter constraints.

**Are per-object policies necessary to learn grasping for certain objects in the Pick subtask?** In Table 2, we run our automated trajectory labeling system on Pick YCB object #003, the Cracker Box (Çalli et al., 2015). The Fetch robot’s parallel gripper can only grasp the Cracker Box along its shortest dimension, so the set of valid grasp poses are highly dependent on the object’s pose relative to the robot. The all-object policy is 1.88-2.42x more likely to fail to excessive collisions and 1.87-12.37x more likely to fail to grasp the object, indicating that overfitting to a specific geometry is important for our RL policies to learn grasping on difficult geometries. For more detailed trajectory labeling definitions and statistics, please see Appendix A.6.

### 6.2.2 IL Policies: Labeling and Filtering Dataset Trajectories

**IL Policies: Can we control the behavior of our IL policies by filtering for specific demonstrations?** Our PrepareGroceries Place RL policies have two similarly frequent success modes: place in goal (release the object within 15cm of  $g_{pos}$ ) and drop to goal (release beyond 15cm). Although

Table 2: Trajectory labeling on Pick Cracker Box with all and per-object RL policies. We group the trajectories into four categories: success once (**S-Once**), excessive collision failure (**F-Col**), cannot grasp failure (**F-Grasp**), and other failure modes (**F-Other**). We provide the percentage of trajectories which fall into each category, and each row sums to 100% (barring any rounding errors).

TASK	SPLIT	TYPE	S-ONCE	F-COL	F-GRASP	F-OTHER
TidyHouse	Train	RL-All	29.46	34.52	28.17	7.85
		RL-Per	71.63	17.26	2.48	8.63
	Val	RL-All	33.73	33.13	24.50	8.64
		RL-Per	73.41	16.67	1.98	7.94
Prepare Groceries	Train	RL-All	11.51	60.62	16.17	11.70
		RL-Per	51.98	25.10	8.63	14.29
	Val	RL-All	14.19	57.24	26.88	1.69
		RL-Per	56.15	30.46	9.72	3.67

MS-HAB does not simulate state transitions like breaking, placing objects without dropping is a desirable, safe robot behavior to avoid excessive damage.

We generate 3 datasets with 500 demonstrations per object: 1) place in goal only, 2) drop in goal only, and 3) 50/50 split (“place”, “drop”, and “split”). We fit IL policies to each dataset and run trajectory labeling to determine policy behavior, shown in Table 3. The place and drop policies show bias towards executing place and drop trajectories respectively, but still perform the opposite behavior somewhat frequently. The split policy is somewhat biased towards dropping, likely because the 1-dim gripper action to drop is easier to learn under MSE loss than a 7-dim arm action to place.

Table 3: Success once rate (**S-Once**, %) and ratio of “place in goal” to “drop to goal” trajectories (**Place : Drop**). Note that some success trajectories are not labeled place in goal or drop to goal, as there are other possible success modes described in Appendix A.6.

FILTERS	SPLIT	S-ONCE	PLACE : DROP
Place in goal	Train	45.73	3.17 : 1
	Val	54.46	2.55 : 1
Drop to goal	Train	49.21	1 : 2.22
	Val	51.19	1 : 2.86
50/50 Split	Train	50.30	1 : 1.71
	Val	55.56	1 : 1.41

Thus, data filtering can generally influence IL policy behavior, but additional methods are needed to fully control behavior (e.g. online finetuning, reward relabeling, more advanced IL methods, etc).

## 7 Conclusion and Limitations

We present MS-HAB, a holistic home-scale rearrangement benchmark including a GPU-accelerated implementation of the HAB which supports realistic low-level control, extensive RL and IL baselines, systematic evaluation using our trajectory labeling system, and demonstration filtering for efficient, controlled data generation at scale. However, there is significant room for improvement on our baselines, and we do not claim transfer to real robots; both of these we leave to future work. Whole-body low-level control under constraints in cluttered environments, long-horizon skill chaining, and scene-level rearrangement are challenging for current robot learning methods; we hope our benchmark and dataset aid the community in advancing these research areas.

## References

- Michael Bain and Claude Sammut. A framework for behavioural cloning. In Koichi Furukawa, Donald Michie, and Stephen H. Muggleton (eds.), *Machine Intelligence 15, Intelligent Agents [St. Catherine's College, Oxford, UK, July 1995]*, pp. 103–129. Oxford University Press, 1995.
- Philip J. Ball, Laura M. Smith, Ilya Kostrikov, and Sergey Levine. Efficient online reinforcement learning with offline data. In Andreas Krause, Emma Brunskill, Kyunghyun Cho, Barbara Engelhardt, Sivan Sabato, and Jonathan Scarlett (eds.), *International Conference on Machine Learning, ICML 2023, 23-29 July 2023, Honolulu, Hawaii, USA*, volume 202 of *Proceedings of Machine Learning Research*, pp. 1577–1594. PMLR, 2023.
- Gabriel Barth-Maron, Matthew W. Hoffman, David Budden, Will Dabney, Dan Horgan, Dhruva TB, Alistair Muldal, Nicolas Heess, and Timothy P. Lillicrap. Distributed distributional deterministic policy gradients. In *6th International Conference on Learning Representations, ICLR 2018, Vancouver, BC, Canada, April 30 - May 3, 2018, Conference Track Proceedings*. OpenReview.net, 2018.
- Mariusz Bojarski, Davide Del Testa, Daniel Dworakowski, Bernhard Firner, Beat Flepp, Prasoon Goyal, Lawrence D. Jackel, Mathew Monfort, Urs Muller, Jiakai Zhang, Xin Zhang, Jake Zhao, and Karol Zieba. End to end learning for self-driving cars. *CoRR*, abs/1604.07316, 2016.
- Anthony Brohan, Noah Brown, Justice Carbajal, Yevgen Chebotar, Joseph Dabis, Chelsea Finn, Keerthana Gopalakrishnan, Karol Hausman, Alexander Herzog, Jasmine Hsu, Julian Ibarz, Brian Ichter, Alex Irpan, Tomas Jackson, Sally Jesmonth, Nikhil J. Joshi, Ryan Julian, Dmitry Kalashnikov, Yuheng Kuang, Isabel Leal, Kuang-Huei Lee, Sergey Levine, Yao Lu, Utsav Malla, Deeksha Manjunath, Igor Mordatch, Ofir Nachum, Carolina Parada, Jodilyn Peralta, Emily Perez, Karl Pertsch, Jornell Quiambao, Kanishka Rao, Michael S. Ryoo, Grecia Salazar, Pannag R. Sanketi, Kevin Sayed, Jaspiar Singh, Sumedh Sontakke, Austin Stone, Clayton Tan, Huong T. Tran, Vincent Vanhoucke, Steve Vega, Quan Vuong, Fei Xia, Ted Xiao, Peng Xu, Sichun Xu, Tianhe Yu, and Brianna Zitkovich. RT-1: robotics transformer for real-world control at scale. In Kostas E. Bekris, Kris Hauser, Sylvia L. Herbert, and Jingjin Yu (eds.), *Robotics: Science and Systems XIX, Daegu, Republic of Korea, July 10-14, 2023*, 2023. doi: 10.15607/RSS.2023.XIX.025.
- Berk Çalli, Aaron Walsman, Arjun Singh, Siddhartha S. Srinivasa, Pieter Abbeel, and Aaron M. Dollar. Benchmarking in manipulation research: The YCB object and model set and benchmarking protocols. *CoRR*, abs/1502.03143, 2015.
- Yuanpei Chen, Chen Wang, Li Fei-Fei, and C. Karen Liu. Sequential dexterity: Chaining dexterous policies for long-horizon manipulation. *CoRR*, abs/2309.00987, 2023. doi: 10.48550/ARXIV.2309.00987.
- Cheng Chi, Siyuan Feng, Yilun Du, Zhenjia Xu, Eric Cousineau, Benjamin Burchfiel, and Shuran Song. Diffusion policy: Visuomotor policy learning via action diffusion. In *Proceedings of Robotics: Science and Systems (RSS)*, 2023.
- Cheng Chi, Zhenjia Xu, Siyuan Feng, Eric Cousineau, Yilun Du, Benjamin Burchfiel, Russ Tedrake, and Shuran Song. Diffusion policy: Visuomotor policy learning via action diffusion. *The International Journal of Robotics Research*, 2024.
- Shreyansh Daftry, J. Andrew Bagnell, and Martial Hebert. Learning transferable policies for monocular reactive MAV control. In Dana Kulic, Yoshihiko Nakamura, Oussama Khatib, and Gentiane Venture (eds.), *International Symposium on Experimental Robotics, ISER 2016, Tokyo, Japan, October 3-6, 2016*, volume 1 of *Springer Proceedings in Advanced Robotics*, pp. 3–11. Springer, 2016. doi: 10.1007/978-3-319-50115-4\_1.
- Sudeep Dasari, Frederik Ebert, Stephen Tian, Suraj Nair, Bernadette Bucher, Karl Schmeckpeper, Siddharth Singh, Sergey Levine, and Chelsea Finn. Robonet: Large-scale multi-robot learning. In Leslie Pack Kaelbling, Danica Kragic, and Komei Sugiura (eds.), *3rd Annual Conference on Robot Learning, CoRL 2019, Osaka, Japan, October 30 - November 1, 2019, Proceedings*, volume 100 of *Proceedings of Machine Learning Research*, pp. 885–897. PMLR, 2019.

415 Sudeep Dasari, Oier Mees, Sebastian Zhao, Mohan Kumar Srirama, and Sergey Levine. The  
416 ingredients for robotic diffusion transformers. *CoRR*, abs/2410.10088, 2024. doi: 10.48550/  
417 ARXIV.2410.10088.

418 Matt Deitke, Eli VanderBilt, Alvaro Herrasti, Luca Weihs, Kiana Ehsani, Jordi Salvador, Winson  
419 Han, Eric Kolve, Aniruddha Kembhavi, and Roozbeh Mottaghi. Proctor: Large-scale embodied  
420 AI using procedural generation. In Sanmi Koyejo, S. Mohamed, A. Agarwal, Danielle Belgrave,  
421 K. Cho, and A. Oh (eds.), *Advances in Neural Information Processing Systems 35: Annual  
422 Conference on Neural Information Processing Systems 2022, NeurIPS 2022, New Orleans, LA,  
423 USA, November 28 - December 9, 2022*, 2022.

424 Frederik Ebert, Yanlai Yang, Karl Schmeckpeper, Bernadette Bucher, Georgios Georgakis, Kostas  
425 Daniilidis, Chelsea Finn, and Sergey Levine. Bridge data: Boosting generalization of robotic  
426 skills with cross-domain datasets. In Kris Hauser, Dylan A. Shell, and Shoudong Huang (eds.),  
427 *Robotics: Science and Systems XVIII, New York City, NY, USA, June 27 - July 1, 2022*, 2022. doi:  
428 10.15607/RSS.2022.XVIII.063.

429 Abby O’Neill et al. Open x-embodiment: Robotic learning datasets and RT-X models : Open  
430 x-embodiment collaboration. In *IEEE International Conference on Robotics and Automation,  
431 ICRA 2024, Yokohama, Japan, May 13-17, 2024*, pp. 6892–6903. IEEE, 2024. doi: 10.1109/  
432 ICRA57147.2024.10611477.

433 Justin Fu, Aviral Kumar, Ofir Nachum, George Tucker, and Sergey Levine. D4RL: datasets for deep  
434 data-driven reinforcement learning. *CoRR*, abs/2004.07219, 2020.

435 Chuang Gan, Siyuan Zhou, Jeremy Schwartz, Seth Alter, Abhishek Bhandwalder, Dan Gutfreund,  
436 Daniel L. K. Yamins, James J. DiCarlo, Josh H. McDermott, Antonio Torralba, and Joshua B.  
437 Tenenbaum. The threedworld transport challenge: A visually guided task-and-motion planning  
438 benchmark towards physically realistic embodied AI. In *2022 International Conference on Robotics  
439 and Automation, ICRA 2022, Philadelphia, PA, USA, May 23-27, 2022*, pp. 8847–8854. IEEE,  
440 2022. doi: 10.1109/ICRA46639.2022.9812329.

441 Jiayuan Gu, Devendra Singh Chaplot, Hao Su, and Jitendra Malik. Multi-skill mobile manipulation  
442 for object rearrangement. In *The Eleventh International Conference on Learning Representations,  
443 ICLR 2023, Kigali, Rwanda, May 1-5, 2023*. OpenReview.net, 2023a.

444 Jiayuan Gu, Fanbo Xiang, Xuanlin Li, Zhan Ling, Xiqiang Liu, Tongzhou Mu, Yihe Tang, Stone  
445 Tao, Xinyue Wei, Yunchao Yao, Xiaodi Yuan, Pengwei Xie, Zhiao Huang, Rui Chen, and Hao  
446 Su. Maniskill2: A unified benchmark for generalizable manipulation skills. In *The Eleventh  
447 International Conference on Learning Representations, ICLR 2023, Kigali, Rwanda, May 1-5,  
448 2023*. OpenReview.net, 2023b.

449 Tuomas Haarnoja, Aurick Zhou, Pieter Abbeel, and Sergey Levine. Soft actor-critic: Off-policy  
450 maximum entropy deep reinforcement learning with a stochastic actor. In Jennifer G. Dy and  
451 Andreas Krause (eds.), *Proceedings of the 35th International Conference on Machine Learning,  
452 ICML 2018, Stockholmsmässan, Stockholm, Sweden, July 10-15, 2018*, volume 80 of *Proceedings  
453 of Machine Learning Research*, pp. 1856–1865. PMLR, 2018.

454 Shengyi Huang, Rousslan Fernand Julien Dossa, Chang Ye, Jeff Braga, Dipam Chakraborty, Ki-  
455 nal Mehta, and João G.M. Araújo. Cleanrl: High-quality single-file implementations of deep  
456 reinforcement learning algorithms. *Journal of Machine Learning Research*, 23(274):1–18, 2022.

457 Stephen James, Zicong Ma, David Rovick Arrojo, and Andrew J. Davison. Rlbench: The robot  
458 learning benchmark & learning environment. *IEEE Robotics Autom. Lett.*, 5(2):3019–3026, 2020.  
459 doi: 10.1109/LRA.2020.2974707.

460 Alexander Khazatsky, Karl Pertsch, Suraj Nair, Ashwin Balakrishna, Sudeep Dasari, Siddharth  
461 Karamcheti, Soroush Nasiriany, Mohan Kumar Srirama, Lawrence Yunliang Chen, Kirsty Ellis,  
462 Peter David Fagan, Joey Hejna, Masha Itkina, Marion Lepert, Yecheng Jason Ma, Patrick Tree  
463 Miller, Jimmy Wu, Suneel Belkhale, Shivin Dass, Huy Ha, Arhan Jain, Abraham Lee, Youngwoon  
464 Lee, Marius Memmel, Sungjae Park, Ilija Radosavovic, Kaiyuan Wang, Albert Zhan, Kevin  
465 Black, Cheng Chi, Kyle Beltran Hatch, Shan Lin, Jingpei Lu, Jean Mercat, Abdul Rehman,

- 466 Pannag R. Sanketi, Archit Sharma, Cody Simpson, Quan Vuong, Homer Rich Walke, Blake  
467 Wulfe, Ted Xiao, Jonathan Heewon Yang, Arefeh Yavary, Tony Z. Zhao, Christopher Agia,  
468 Rohan Baijal, Mateo Guaman Castro, Daphne Chen, Qiuyu Chen, Trinity Chung, Jaimyn Drake,  
469 Ethan Paul Foster, and et al. DROID: A large-scale in-the-wild robot manipulation dataset. *CoRR*,  
470 abs/2403.12945, 2024. doi: 10.48550/ARXIV.2403.12945.
- 471 Eric Kolve, Roozbeh Mottaghi, Daniel Gordon, Yuke Zhu, Abhinav Gupta, and Ali Farhadi. AI2-  
472 THOR: an interactive 3d environment for visual AI. *CoRR*, abs/1712.05474, 2017.
- 473 Youngwoon Lee, Joseph J. Lim, Anima Anandkumar, and Yuke Zhu. Adversarial skill chaining for  
474 long-horizon robot manipulation via terminal state regularization. In Aleksandra Faust, David Hsu,  
475 and Gerhard Neumann (eds.), *Conference on Robot Learning, 8-11 November 2021, London, UK*,  
476 volume 164 of *Proceedings of Machine Learning Research*, pp. 406–416. PMLR, 2021.
- 477 Chengshu Li, Fei Xia, Roberto Martín-Martín, Michael Lingelbach, Sanjana Srivastava, Bokui Shen,  
478 Kent Elliott Vainio, Cem Gokmen, Gokul Dharan, Tanish Jain, Andrey Kurenkov, C. Karen Liu,  
479 Hyowon Gweon, Jiajun Wu, Li Fei-Fei, and Silvio Savarese. igibson 2.0: Object-centric simulation  
480 for robot learning of everyday household tasks. In Aleksandra Faust, David Hsu, and Gerhard  
481 Neumann (eds.), *Conference on Robot Learning, 8-11 November 2021, London, UK*, volume 164  
482 of *Proceedings of Machine Learning Research*, pp. 455–465. PMLR, 2021.
- 483 Chengshu Li, Ruohan Zhang, Josiah Wong, Cem Gokmen, Sanjana Srivastava, Roberto Martín-  
484 Martín, Chen Wang, Gabrael Levine, Michael Lingelbach, Jiankai Sun, Mona Anvari, Minjune  
485 Hwang, Manasi Sharma, Arman Aydin, Dhruva Bansal, Samuel Hunter, Kyu-Young Kim, Alan  
486 Lou, Caleb R. Matthews, Ivan Villa-Renteria, Jerry Huayang Tang, Claire Tang, Fei Xia, Silvio  
487 Savarese, Hyowon Gweon, C. Karen Liu, Jiajun Wu, and Li Fei-Fei. BEHAVIOR-1K: A benchmark  
488 for embodied AI with 1, 000 everyday activities and realistic simulation. In Karen Liu, Dana Kulic,  
489 and Jeffrey Ichnowski (eds.), *Conference on Robot Learning, CoRL 2022, 14-18 December 2022,*  
490 *Auckland, New Zealand*, volume 205 of *Proceedings of Machine Learning Research*, pp. 80–93.  
491 PMLR, 2022.
- 492 Ajay Mandlekar, Yuke Zhu, Animesh Garg, Jonathan Booher, Max Spero, Albert Tung, Julian Gao,  
493 John Emmons, Anchit Gupta, Emre Orbay, Silvio Savarese, and Li Fei-Fei. ROBOTURK: A  
494 crowdsourcing platform for robotic skill learning through imitation. In *2nd Annual Conference on*  
495 *Robot Learning, CoRL 2018, Zürich, Switzerland, 29-31 October 2018, Proceedings*, volume 87  
496 of *Proceedings of Machine Learning Research*, pp. 879–893. PMLR, 2018.
- 497 Ajay Mandlekar, Danfei Xu, Josiah Wong, Soroush Nasiriany, Chen Wang, Rohun Kulkarni, Li Fei-  
498 Fei, Silvio Savarese, Yuke Zhu, and Roberto Martín-Martín. What matters in learning from offline  
499 human demonstrations for robot manipulation. In Aleksandra Faust, David Hsu, and Gerhard  
500 Neumann (eds.), *Conference on Robot Learning, 8-11 November 2021, London, UK*, volume 164  
501 of *Proceedings of Machine Learning Research*, pp. 1678–1690. PMLR, 2021.
- 502 Ajay Mandlekar, Soroush Nasiriany, Bowen Wen, Ireteayo Akinola, Yashraj S. Narang, Linxi Fan,  
503 Yuke Zhu, and Dieter Fox. Mimicgen: A data generation system for scalable robot learning using  
504 human demonstrations. In Jie Tan, Marc Toussaint, and Kourosh Darvish (eds.), *Conference on*  
505 *Robot Learning, CoRL 2023, 6-9 November 2023, Atlanta, GA, USA*, volume 229 of *Proceedings*  
506 *of Machine Learning Research*, pp. 1820–1864. PMLR, 2023.
- 507 Detlef Mewes and Fritz Mauser. Safeguarding crushing points by limitation of forces. *International*  
508 *journal of occupational safety and ergonomics : JOSE*, 9:177–91, 02 2003. doi: 10.1080/10803548.  
509 2003.11076562.
- 510 Volodymyr Mnih, Koray Kavukcuoglu, David Silver, Andrei A. Rusu, Joel Veness, Marc G. Belle-  
511 mare, Alex Graves, Martin A. Riedmiller, Andreas Fidjeland, Georg Ostrovski, Stig Petersen,  
512 Charles Beattie, Amir Sadik, Ioannis Antonoglou, Helen King, Dharshan Kumaran, Daan Wierstra,  
513 Shane Legg, and Demis Hassabis. Human-level control through deep reinforcement learning. *Nat.*,  
514 518(7540):529–533, 2015. doi: 10.1038/NATURE14236.
- 515 Soroush Nasiriany, Abhiram Maddukuri, Lance Zhang, Adeet Parikh, Aaron Lo, Abhishek Joshi,  
516 Ajay Mandlekar, and Yuke Zhu. Robocasa: Large-scale simulation of everyday tasks for generalist  
517 robots. *CoRR*, abs/2406.02523, 2024. doi: 10.48550/ARXIV.2406.02523.



- Allen Z. Ren, Justin Lidard, Lars Ankile, Anthony Simeonov, Pulkit Agrawal, Anirudha Majumdar, Benjamin Burchfiel, Hongkai Dai, and Max Simchowitz. Diffusion policy policy optimization. *CoRR*, abs/2409.00588, 2024. doi: 10.48550/ARXIV.2409.00588.
- Stéphane Ross, Geoffrey J. Gordon, and Drew Bagnell. A reduction of imitation learning and structured prediction to no-regret online learning. In Geoffrey J. Gordon, David B. Dunson, and Miroslav Dudík (eds.), *Proceedings of the Fourteenth International Conference on Artificial Intelligence and Statistics, AISTATS 2011, Fort Lauderdale, USA, April 11-13, 2011*, volume 15 of *JMLR Proceedings*, pp. 627–635. JMLR.org, 2011.
- Manolis Savva, Jitendra Malik, Devi Parikh, Dhruv Batra, Abhishek Kadian, Oleksandr Maksymets, Yili Zhao, Erik Wijmans, Bhavana Jain, Julian Straub, Jia Liu, and Vladlen Koltun. Habitat: A platform for embodied AI research. In *2019 IEEE/CVF International Conference on Computer Vision, ICCV 2019, Seoul, Korea (South), October 27 - November 2, 2019*, pp. 9338–9346. IEEE, 2019. doi: 10.1109/ICCV.2019.00943.
- John Schulman, Filip Wolski, Prafulla Dhariwal, Alec Radford, and Oleg Klimov. Proximal policy optimization algorithms. *CoRR*, abs/1707.06347, 2017.
- Andrew Szot, Alexander Clegg, Eric Undersander, Erik Wijmans, Yili Zhao, John M. Turner, Noah Maestre, Mustafa Mukadam, Devendra Singh Chaplot, Oleksandr Maksymets, Aaron Gokaslan, Vladimir Vondrus, Sameer Dharur, Franziska Meier, Wojciech Galuba, Angel X. Chang, Zsolt Kira, Vladlen Koltun, Jitendra Malik, Manolis Savva, and Dhruv Batra. Habitat 2.0: Training home assistants to rearrange their habitat. In Marc’Aurelio Ranzato, Alina Beygelzimer, Yann N. Dauphin, Percy Liang, and Jennifer Wortman Vaughan (eds.), *Advances in Neural Information Processing Systems 34: Annual Conference on Neural Information Processing Systems 2021, NeurIPS 2021, December 6-14, 2021, virtual*, pp. 251–266, 2021.
- Stone Tao, Fanbo Xiang, Arth Shukla, Yuzhe Qin, Xander Hinrichsen, Xiaodi Yuan, Chen Bao, Xinsong Lin, Yulin Liu, Tse kai Chan, Yuan Gao, Xuanlin Li, Tongzhou Mu, Nan Xiao, Arnab Gurha, Zhiao Huang, Roberto Calandra, Rui Chen, Shan Luo, and Hao Su. Maniskill3: Gpu parallelized robotics simulation and rendering for generalizable embodied ai. *arXiv preprint arXiv:2410.00425*, 2024.
- Fanbo Xiang, Yuzhe Qin, Kaichun Mo, Yikuan Xia, Hao Zhu, Fangchen Liu, Minghua Liu, Hanxiao Jiang, Yifu Yuan, He Wang, Li Yi, Angel X. Chang, Leonidas J. Guibas, and Hao Su. SAPIEN: A simulated part-based interactive environment. In *2020 IEEE/CVF Conference on Computer Vision and Pattern Recognition, CVPR 2020, Seattle, WA, USA, June 13-19, 2020*, pp. 11094–11104. Computer Vision Foundation / IEEE, 2020. doi: 10.1109/CVPR42600.2020.01111.
- Jinwei Xing. Pytorch implementations of reinforcement learning algorithms for visual continuous control. <https://github.com/KarlXing/RL-Visual-Continuous-Control>, 2022.
- Sherry Yang, Yilun Du, Seyed Kamyar Seyed Ghasemipour, Jonathan Tompson, Leslie Pack Kaelbling, Dale Schuurmans, and Pieter Abbeel. Learning interactive real-world simulators. In *The Twelfth International Conference on Learning Representations, ICLR 2024, Vienna, Austria, May 7-11, 2024*. OpenReview.net, 2024.
- ZebraTechnologies. Autonomous mobile robots, 2024.
- Yuke Zhu, Josiah Wong, Ajay Mandlekar, and Roberto Martín-Martín. robosuite: A modular simulation framework and benchmark for robot learning. *CoRR*, abs/2009.12293, 2020.

## 560 A Appendix

### 561 A.1 Subtask Definitions and Initialization

#### 562 A.1.1 General Initialization

563 We refer to the robot end-effector as  $ee$ , and its rest position as  $r_{pos}$ . The end-effector resting position  
564 is (0.5 m, 0 m, 1.25 m) relative to the base<sup>2</sup>. Let  $q_{arm}$  be the arm joint positions,  $r_{arm}$  be the arm

<sup>2</sup>The z-axis is ‘up’ in ManiSkill3.

resting joint positions, and  $\dot{q}_{arm}$  be the arm joint velocities. Similarly, for the torso define  $q_{tor}$ ,  $r_{tor}$ , and  $\dot{q}_{tor}$ . Let  $v_{base}$  be the base linear velocity in  $\text{m s}^{-1}$ , and  $v_{base,x}$ ,  $v_{base,y}$  its x and y components respectively. Let  $\omega_{base}$  be the base angular velocity in  $\text{rad s}^{-1}$ .

We initialize the robot to  $r_{pos}, r_{arm}, r_{tor}$  with  $\dot{q}_{arm} = (0 \dots 0)$ ,  $\dot{q}_{tor} = 0$ ,  $v_{base} = 0$ ,  $\omega_{base} = 0$ . Then,  $q_{arm}$  is perturbed by clipped Gaussian noise  $\text{clip}(\mathcal{N}(0, 0.1), -0.2, 0.2)$ , the base position is perturbed by  $\text{clip}(\mathcal{N}(0, 0.1), -0.2, 0.2)$ , and the base rotation is perturbed by  $\text{clip}(\mathcal{N}(0, 0.25), -0.5, 0.5)$ .

## A.2 Subtask Definitions

Let  $d_b^a = \|a_{pos} - b_{pos}\|_2^2$ , units in m. For example,  $d_{ee}^r$  is the distance in m between the end-effector and its rest position. Next, let  $j_k = \max_{1 \leq i \leq |q_k|} |q_{k,i} - r_{k,i}|$ . For example,  $j_{arm}$  is the maximum absolute difference in the arm joint positions and corresponding resting positions. Let  $C_{[0:t]}$  be the cumulative robot collisions in N until step  $t$ . Finally, we define two commonly-used success conditions for the Fetch robot:

$$\mathbf{1}_{\text{grasped}(x)} = \mathbf{1} \{x \text{ is grasped (computed by simulator)}\}$$

$$\mathbf{1}_{\text{is\_static}} = \mathbf{1} \left\{ \left( \max_{1 \leq i \leq |q_{arm}|} \dot{q}_{arm,i} \leq 0.2 \right) \wedge v_{base,x} \leq 0.05 \wedge v_{base,y} \leq 0.05 \wedge \omega_{base} \leq 0.05 \right\}$$

**Pick** $[a, \text{optional}](x_{pose})$ : Pick object  $x$  (from articulation  $a$ , if provided).

- Initialization: Spawn robot facing  $x$ , within 2 m of  $x$ , with noise, and without collisions.
- Success:

$$\mathbf{1}_{\text{grasped}(x)} \wedge d_{ee}^r \leq 0.05 \wedge j_{arm} \leq 0.6 \wedge \mathbf{1}_{\text{is\_static}} \wedge C_{[0:t]} \leq 5000$$

- Failure:  $C_{[0:t]} > 5000$  N

**Place** $[a, \text{optional}](x_{pose}, g_{pos})$ : Place object  $x$  at goal  $g$  (in articulation  $a$ , if provided).

- Initialization: Spawn with grasp pose sampled from  $\text{Pick}(x_{pose})$  policy, robot facing  $g$ , within 2 m of  $g$ , with noise, and without collisions.
- Success:

$$\neg \mathbf{1}_{\text{grasped}(x)} \wedge d_x^g \leq 0.15 \wedge d_{ee}^r \leq 0.05 \wedge j_{arm} \leq 0.2 \wedge j_{tor} \leq 0.01 \wedge \mathbf{1}_{\text{is\_static}} \wedge C_{[0:t]} \leq 7500$$

- Failure:  $C_{[0:t]} > 7500$  N

**Open** $[a](a_{pos})$ : Open articulation  $a$  with handle at  $a_{pos}$ .

- Initialization: Spawn facing  $a$ . If  $a$  is a fridge, spawn within  $[0.933, -0.6] \times [1.833, 0.6]$  region in front of  $a$ , otherwise within  $[0.3, -0.6] \times [1.5, 0.6]$ . With noise, without collisions.
- Success: Let  $a_q, a_{qmax}, a_{qmin}$  be the current, max, and min joint positions for the target articulation (drawer or fridge). Then, let  $a_{ofrac} = \{0.75 \text{ if } a \text{ is a fridge else } 0.9\}$ . We define

$$\mathbf{1}_{\text{open}(a)} = \mathbf{1} \{a_q \geq a_{ofrac} \cdot (a_{qmax} - a_{qmin}) + a_{qmin}\}$$

Hence, we have success condition

$$\mathbf{1}_{\text{open}(a)} \wedge d_{ee}^r \leq 0.05 \wedge j_{arm} \leq 0.2 \wedge j_{tor} \leq 0.01 \wedge \mathbf{1}_{\text{is\_static}} \wedge C_{[0:t]} \leq 10000$$

- Failure<sup>3</sup>:  $C_{[0:t]} > 10\,000$  N

**Close** $[a](a_{pos})$ : Close articulation  $a$  with handle at  $a_{pos}$ .

- Initialization: Spawn facing  $a$ . If  $a$  is a fridge, spawn within  $[0.933, -0.6] \times [1.833, 0.6]$  region in front of  $a$ , otherwise within  $[0.3, -0.6] \times [1.5, 0.6]$ . With noise, without collisions.

<sup>3</sup>Originally, the HAB does not specify collision limits for Open or Close, but we add them to enforce safety.

- Success: Let  $a_q, a_{qmax}, a_{qmin}$  be the current, max, and min joint positions for the target articulation (drawer or fridge). We define

$$\mathbf{1}_{\text{close}(a)} = \mathbf{1} \{a_q \leq 0.01 \cdot (a_{qmax} - a_{qmin}) + a_{qmin}\}$$

Hence, we have success condition

$$\mathbf{1}_{\text{close}(a)} \wedge d_{ee}^r \leq 0.05 \wedge j_{arm} \leq 0.2 \wedge j_{tor} \leq 0.01 \wedge \mathbf{1}_{\text{is\_static}} \wedge C_{[0:t]} \leq 10000$$

- Failure<sup>3</sup>:  $C_{[0:t]} > 10\,000$

### 593 A.3 RL Subtask Evaluation Curves

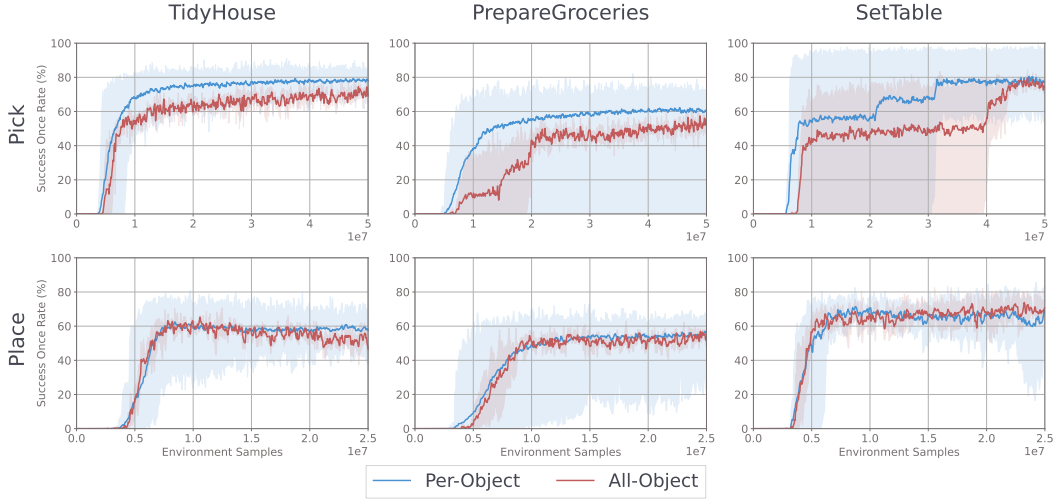


Figure 4: Per-object vs all-object RL success once rate (%) evaluation curves for Pick and Place policies across tasks. We run 3 seeds for each per-object policy and 3 seeds for the all-object policy. TidyHouse and PrepareGroceries involve 9 objects, while SetTable involves 2 objects. Since we group runs for different per-object policies into one curve, we use minimum and maximum for the shaded region. Best viewed zoomed.

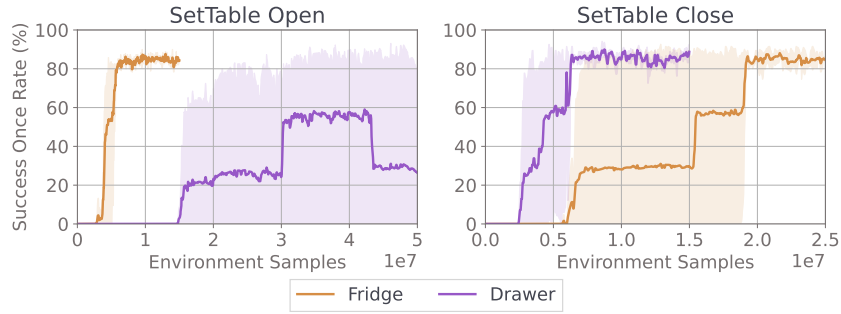


Figure 5: Open and Close training success once rate (%) curves for Drawer and Fridge. Since success once rate jumps very quickly once the policy learns to solve the task, we use minimum and maximum for the shaded region.

594 During training, we evaluate our policies every 10000 steps on 189 episodes. The per vs all-object  
 595 training curves in Fig. 4 demonstrate a similar trend as seen in Sec. 6.2.1: per-object policies show  
 596 the most significant improvements when grasping many objects with different geometries (TidyHouse  
 597 Pick and PrepareGroceries Pick) or when manipulating objects in tight constraints where object  
 598 geometry is important (PrepareGroceries Place).

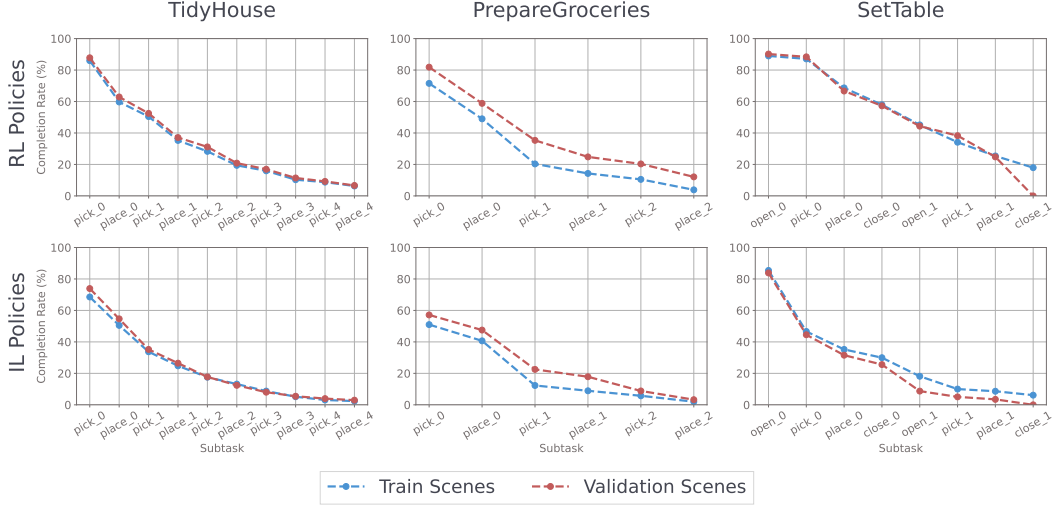


Figure 6: Progressive completion rate (%) on simplified long-horizon tasks with RL and IL policies. We remove all collision requirements, and allow placing on the full target receptacle surface. Best viewed zoomed.

Per Tables 10-13, the performance limitations for Open and Close seen in Fig. 5 are caused primarily by the 10 000 N cumulative robot force limit we set, which is not used in the original implementation of the HAB (Szot et al., 2021).

See Appendix A.4.4 for more analysis on performance under lower collision thresholds.

## A.4 Additional Experiments

### A.4.1 Dataset Size

To highlight the importance of generating scalable datasets, we train IL policies for TidyHouse/PrepareGroceries/SetTable Pick/Place subtasks at 1, 10, 100, 500, and 1000 demonstrations per object. In Table 4, we run 1000 evaluation episodes per policy, and group results by demonstrations per object. We then report average success once rate and 95% CIs for each demonstrations per object value.

We find that 1000 demonstrations per object leads to the most performant policies. Furthermore there are large jumps in success rate as demonstrations per object increases from 10 to 100 to 500.

Table 4: Success once rate (**SoR**) with 95% CIs depending on demos per object (**Demos**).

DEMOS	SoR
1	0.00 $\pm$ 0.00
10	0.02 $\pm$ 0.03
100	0.27 $\pm$ 0.19
500	0.53 $\pm$ 0.13
1000	0.62 $\pm$ 0.09

### A.4.2 Performance with Task Simplifications

In Sec. 6.1, we find that improving subtask success rate is the most effective way to increase long-horizon task success rate. In Fig. 6, we simplify the long-horizon tasks by (1) removing all collision requirements, and (2) marking Place subtasks successful if the object remains anywhere on the target receptacle surface. We find that progressive completion rate increases for both our RL and IL policies, but we achieve no higher than 20% overall task success on any task or split. Hence, the largest challenge in training subtask policies is low-level whole-body control. Meanwhile, collision requirements and subtask success conditions pose some difficulty, but not as much.

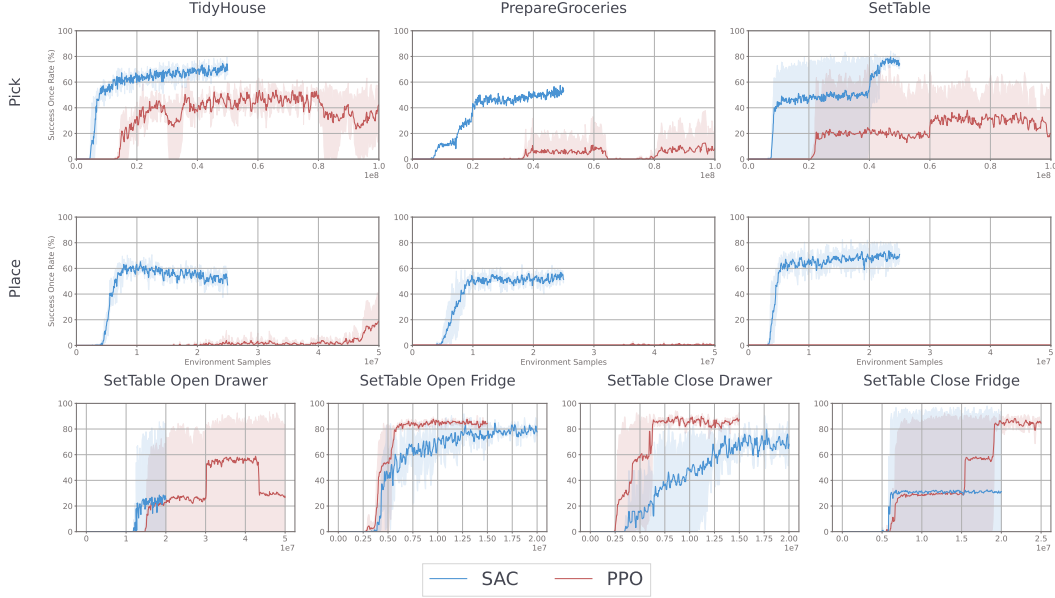


Figure 7: SAC vs PPO subtask success once rate (%) curves on the train split. Lines are averaged across 3 seeds; since success rate can jump rapidly, shaded regions represent min/max values. For Pick and Place, we compare all-object SAC and PPO policies, and for Open and Close, we compare per-object policies. Note that for PrepareGroceries and SetTable Place, lines are drawn but near-zero. Best viewed zoomed.

#### 627 A.4.3 SAC vs PPO for RL Training

628 To justify our choices of RL algorithm for each policy, we compare SAC and PPO performance  
629 across tasks and subtasks. For Pick and Place, we compare all-object SAC and PPO subtask success  
630 once rate (%) on the train split. As described in Sec. 5.1, we train SAC with 25 million samples.  
631 Since PPO trains faster wall-time, we provide it 50 millions samples for a fair comparison.

632 Furthermore, for Open and Close, we compare per-object success once rate (%). We provide PPO  
633 with the same total samples as listed in Sec. 5.1, and we train SAC with 20 million samples per run.

634 For Pick and Place, despite training on double the total samples, PPO policies achieve notably lower  
635 performance compared to the SAC policies. We hypothesize this is because our large replay buffer  
636 can store a greater diversity of examples across objects, spawn locations, and obstructions, allowing  
637 SAC policies to better learn manipulation in diverse settings (Haarnoja et al., 2018). Hence, we use  
638 SAC for RL Pick and Place baselines.

639 Meanwhile, in Open Fridge and Close Drawer PPO policies perform better than SAC policies, in  
640 Close Fridge PPO policies perform marginally worse than SAC polices, and in Open Drawer PPO  
641 policies perform better only with many more samples. Since performance between PPO and SAC  
642 is generally comparable in Open and Close, we choose PPO for our baselines since it has faster  
643 wall-time training. For consistency, we use the same RL algorithm across all Open and Close variants.

#### 644 A.4.4 Performance Under Low Collision Thresholds

645 To evaluate the safety of our policies in a real-world setting, we compare performance for RL-Per,  
646 RL-All, and IL policies on Pick and Place subtasks under low cumulative collision thresholds. Per  
647 industry safety standards, we use 1400 N for as the measure for safe execution (Mewes & Mauser,  
648 2003).

649 As seen in Fig. 8, we observe a 5-20% drop in performance depending on subtask when using a  
650 cumulative collision threshold of 1400 N. Additionally, the per-object RL policies notably outperform  
651 all-object RL policies under lower collision thresholds.



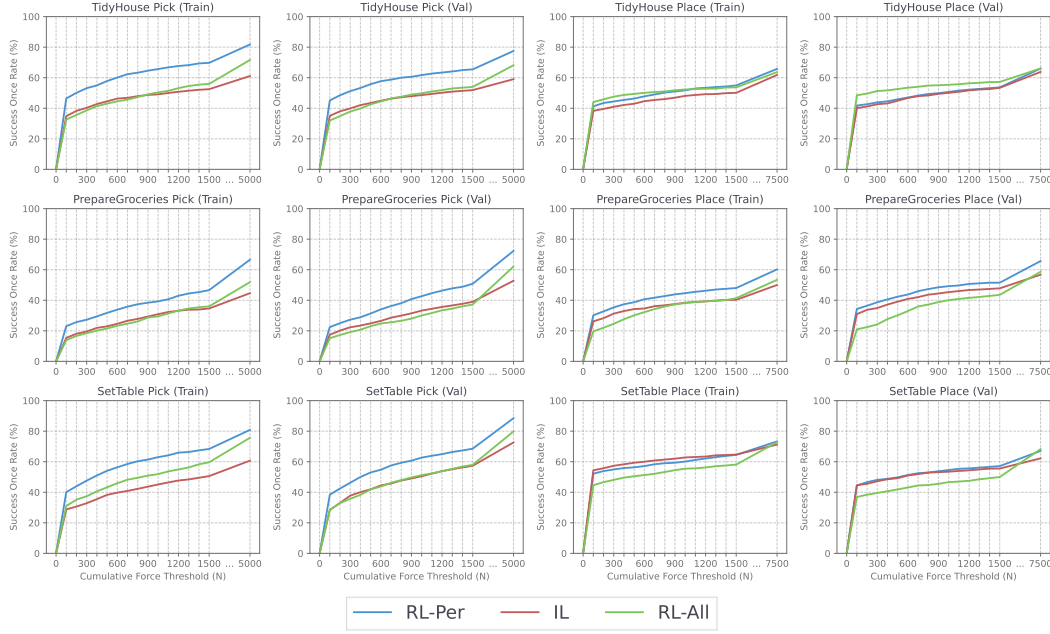


Figure 8: Success once rates (%) for RL-Per, RL-All, and IL policies in Pick and Place subtasks under varying cumulative collision thresholds. Best viewed zoomed.

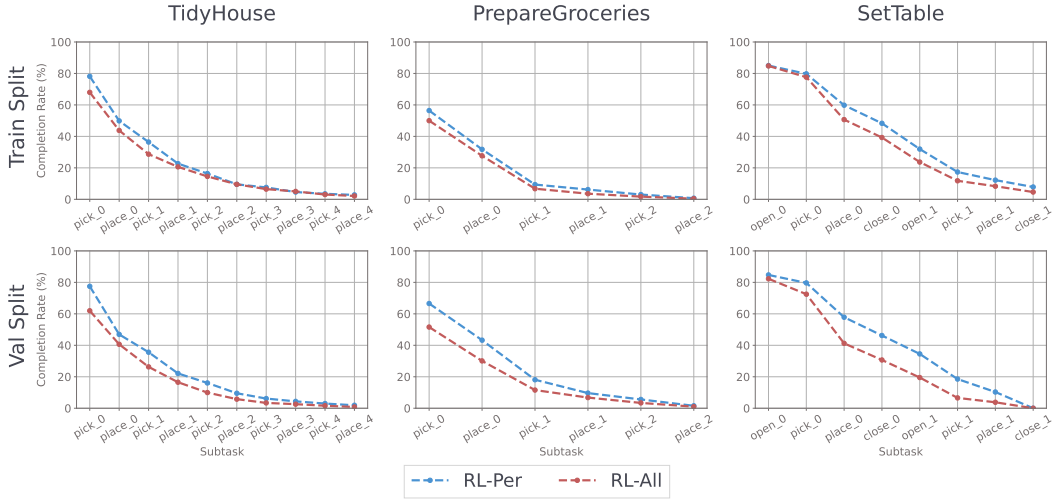


Figure 9: Success once rates (%) for RL-Per and RL-All policies on long-horizon tasks in train and validation split. Best viewed zoomed.

#### 652 A.4.5 Per vs All-Object Policy Long-Horizon Performance

653 In addition to superior subtask success rates, as seen in Fig. 9, per-object RL policies outperform  
654 their all-object counterparts on full long horizon tasks in both train and validation splits.

#### 655 A.4.6 Diffusion Policy Baselines

656 To explore more complicated methods, we train diffusion policy (DP) baselines. We use a setup  
657 similar to the original DP paper, with a UNet backbone and a DDPM scheduler (Chi et al., 2023,  
658 2024). For our visual encoders, we use a simpler 4-layer CNN rather than a ResNet. For consistency,  
659 we use the same architecture and hyperparameters for all subtasks.

Table 5: Subtask success once rates for BC and DP baselines.

TASK	SUBTASK	SPLIT	BC	DP
TidyHouse	Pick	Train Val	<b>61.11</b> <b>59.03</b>	28.37 27.18
	Place	Train Val	<b>61.81</b> <b>63.79</b>	58.63 59.92
Prepare Groceries	Pick	Train Val	<b>44.64</b> <b>52.78</b>	19.35 19.74
	Place	Train Val	<b>50.00</b> <b>56.75</b>	39.09 50.40
SetTable	Pick	Train Val	<b>60.71</b> <b>72.62</b>	23.71 24.40
	Place	Train Val	<b>71.23</b> <b>62.20</b>	64.19 55.36
	Open <sub>Fr</sub>	Train Val	<b>74.01</b> 53.67	62.10 <b>63.79</b>
	Open <sub>Dr</sub>	Train Val	<b>79.86</b> <b>78.57</b>	16.17 15.18
	Close <sub>Fr</sub>	Train Val	<b>86.90</b> 0.00	64.09 <b>0.10</b>
	Close <sub>Dr</sub>	Train Val	88.39 <b>87.60</b>	<b>89.29</b> 85.81

As seen in Table 5, our DP baselines surprisingly perform generally worse than our BC baselines. Performance is closer in Place subtasks, but worse in Pick, potentially due to the increased potential for collisions when picking objects. Interestingly, DP is the only baseline which achieves non-zero success on Open Fridge on the validation split, despite the fridge being against a wall (unseen in the train split).

Our results suggest that, while smaller backbones or limited tuning can solve simpler tasks like Push-T or those in the ManiSkill3 standard task suite, the ManiSkill-HAB tasks might require larger/different backbones (e.g. diffusion transformer), tuning hyperparameters per subtask, or including newer methods like online finetuning (e.g. DPPO) (Dasari et al., 2024; Ren et al., 2024).

## A.5 Ray Tracing and Visual Fidelity



Figure 10: Left: ManiSkill-HAB with ray tracing on. Right: Behavior-1k with ray tracing on. Both images are live-rendered. The right image is taken from the Behavior-1k Google Colab demo notebook (Li et al., 2022).

For visual realism, we provide live-rendered ray-tracing with tuned lighting, which can be selected with only one line in the code. We compare rendering performance and quality with Behavior-1k, a platform known for its visual realism (Li et al., 2022).

To compare performance, we run an altered version of Behavior-1k’s rendering benchmark. We use a single Nvidia RTX 4090, render 1 128x128 RGB-D image, and simulate dynamics with a simulation frequency of 120Hz and control frequency of 30Hz. Each evaluation run consists of 300 steps of random actions clipped to  $[-0.3, 0.3]$ . We report mean and 95% CIs over 10 evaluation runs.

While live-rendering with ray tracing, ManiSkill-HAB achieves  $69.90 \pm 0.25$  samples per second (SPS) while using  $6.26 \pm 0.00$  GB of GPU memory, while Behavior-1k is limited to  $19.92 \pm 0.04$  SPS while using  $7.62 \pm 0.04$  GB of GPU memory.

Hence, ManiSkill-HAB is 3.51x faster than Behavior-1k while using 17.85% less GPU memory, while also retaining similar ray-tracing render quality as seen in Fig. 10.

## A.6 Trajectory Categorization and Dataset Filtering

In this section, we provide definitions for our event labeling and trajectory categorization system. We additionally provide statistics on policy success and failure modes using our trajectory categorization system. Some example videos for Pick and Place failure modes are provided in the supplementary and project website.

### A.6.1 Dataset Filtering and Generation

We generate 1000 demonstrations per object/articulation for each subtask using per-object RL policies on the train split. We use our trajectory labeling system to filter demonstrations (full definitions in Appendix A.6.2). For Pick, we require “straightforward success” demonstrations, where the agent successfully picks the object without dropping it while remaining within the cumulative collision threshold. For Place, we require “placed in goal success” demonstrations, where the agent releases the object within 15cm of the goal, the object stays in the goal without rolling or falling out, and the agent remains within the cumulative collision threshold. For Open and Close, we require “open success” and “closed success” demonstrations, where the agent opens/closes the articulation without excessive collisions, and the articulation remains within the open/close state.

### A.6.2 Definitions

For each success and failure mode definition, we provide a plain text description in addition to the boolean definitions. We heavily rely on notation used in Appendix A.1, in addition to those defined below.

Using the criteria defined below, for each trajectory  $\tau_{\text{subtask}} = (s_0, a_0, \dots, s_n, a_n)$ , we create a chronologically ordered event list  $E_{\text{subtask}} = (e_1, \dots, e_k)$ . Using  $E_{\text{subtask}}$ , we categorize  $\tau_{\text{subtask}}$  into a success/failure mode.

Let  $i_{\text{subtask,event}} = \{\text{index of } e_{\text{event}} \text{ in } E_{\text{subtask}} \text{ if } e_{\text{event}} \in E_{\text{subtask}} \text{ else } -1\}$ . Also, let  $F_{a,b,t}$  be the pairwise force between  $a$  and  $b$  in  $\mathcal{N}$  at timestep  $t$ .

**Pick** $[a, \text{optional}](x_{\text{pose}})$ : Pick object  $x$  (from articulation  $a$ , if provided).

• Events: We define time-conditioned events at timestep  $t$ :

$$\begin{aligned} e_{\text{contact}} &= |F_{ee,x,t-1}| = 0 \wedge |F_{ee,x,t}| \geq 0 \\ e_{\text{grasped}} &= \neg \mathbf{1}_{\text{grasped}(x),t-1} \wedge \mathbf{1}_{\text{grasped}(x),t} \\ e_{\text{dropped}} &= \mathbf{1}_{\text{grasped}(x),t-1} \wedge \neg \mathbf{1}_{\text{grasped}(x),t} \\ e_{\text{success}} &= \neg \mathbf{1}_{\text{success},t-1} \wedge \mathbf{1}_{\text{success},t} \\ e_{\text{excessive\_collisions}} &= C_{[0:t-1]} \leq 5000 \wedge C_{[0:t]} > 5000 \end{aligned}$$

For  $t \in \{1, \dots, n\}$  (in increasing order), we evaluate each  $e_{\text{event}}$  in the order shown above. If  $e_{\text{event}} = 1$ , we add it to  $E_{\text{pick}}$ .

• Success Modes: if  $e_{\text{success}} \in E_{\text{pick}}$ , then categorize using the following success modes:

i Straightforward success: Agent successfully grasps  $x$  and returns to rest without dropping or excessive collisions.  
 $E_{\text{pick}} = (e_{\text{contact}}, e_{\text{grasped}}, e_{\text{success}})$

- 714 ii Winding success: Agent (eventually) successfully grasps  $x$  (but drops  $x$  along the way)  
 715 and returns to rest without excessive collisions.  
 716  $E_{\text{pick}} = (e_{\text{contact}}, e_{\text{grasped}}, \dots, e_{\text{success}}) \wedge |E_{\text{pick}}| > 3 \wedge e_{\text{excessive\_collisions}} \notin E_{\text{pick}}$   
 717 iii Success then drop: Agent successfully picks  $x$  and returns to rest without excessive  
 718 collisions, but irrecoverably drops  $x$  after.  
 719  $e_{\text{dropped}} \in E_{\text{pick}} \wedge i_{\text{subtask,dropped}} > i_{\text{subtask,grasped}} \wedge e_{\text{excessive\_collisions}} \notin E_{\text{pick}}$   
 720 iv Success then excessive collisions: Agent picks  $x$  and returns to rest, but exceeds  
 721 collision threshold afterwards.  
 722  $e_{\text{excessive\_collisions}} \in E_{\text{pick}}$   
 723 • Failure Modes: if  $e_{\text{success}} \notin E_{\text{pick}}$ , then categorize using the following failure modes:  
 724 v Excessive collision failure: Agent exceeds collision threshold.  
 725  $e_{\text{excessive\_collisions}} \in E_{\text{pick}}$   
 726 vi Mobility failure: Agent cannot reach  $x$ .  
 727  $E_{\text{pick}} = ()$   
 728 vii Can't grasp failure: Agent reaches  $x$ , but cannot grasp it.  
 729  $E_{\text{pick}} = (e_{\text{contact}})$   
 730 viii Drop failure: Agent grasps  $x$ , but drops it before returning to rest.  
 731  $e_{\text{dropped}} \in E_{\text{pick}} \wedge i_{\text{subtask,dropped}} > i_{\text{subtask,grasped}} \wedge e_{\text{excessive\_collisions}} \notin E_{\text{pick}}$   
 732 ix Too slow failure: Agent (eventually) grasps  $x$ , but the episode truncates before it can  
 733 reach success.  
 734  $e_{\text{grasped}} \in E_{\text{pick}} \wedge i_{\text{subtask,grasped}} > i_{\text{subtask,dropped}} \wedge e_{\text{excessive\_collisions}} \notin E_{\text{pick}}$

735 **Place** $[a, \text{optional}](x_{\text{pose}}, g_{\text{pos}})$ : Place object  $x$  at goal  $g$  (in articulation  $a$ , if provided).

- 736 • Events: We define time-conditioned events at timestep  $t$ :

$$\begin{aligned}
 e_{\text{grasped}} &= \neg \mathbf{1}_{\text{grasped}(x), t-1} \wedge \mathbf{1}_{\text{grasped}(x), t} \\
 e_{\text{obj\_at\_goal}} &= d_{x, t-1}^g > 0.15 \wedge d_{x, t}^g \leq 0.15 \\
 e_{\text{released\_at\_goal}} &= d_x^g \leq 0.15 \wedge \mathbf{1}_{\text{grasped}(x), t-1} \wedge \neg \mathbf{1}_{\text{grasped}(x), t} \\
 e_{\text{released\_outside\_goal}} &= d_x^g > 0.15 \wedge \mathbf{1}_{\text{grasped}(x), t-1} \wedge \neg \mathbf{1}_{\text{grasped}(x), t} \\
 e_{\text{obj\_left\_goal}} &= d_{x, t-1}^g \leq 0.15 \wedge d_{x, t}^g > 0.15 \\
 e_{\text{success}} &= \neg \mathbf{1}_{\text{success}, t-1} \wedge \mathbf{1}_{\text{success}, t} \\
 e_{\text{excessive\_collisions}} &= C_{[0:t-1]} \leq 7500 \wedge C_{[0:t]} > 7500
 \end{aligned}$$

737 For  $t \in \{1, \dots, n\}$  (in increasing order), we evaluate each  $e_{\text{event}}$  in the order shown above.  
 738 If  $e_{\text{event}} = 1$ , we add it to  $E_{\text{place}}$ .

- 739 • Success Modes: if  $e_{\text{success}} \in E_{\text{place}}$ , then categorize using the following success modes:  
 740 i Place in goal success: Agent releases and successfully places  $x$  to within 15cm of  $g_{\text{pos}}$ ,  
 741 then returns to rest.  
 742  $|E_{\text{place}}| \leq 4 \wedge (e_{\text{released\_at\_goal}} \in E_{\text{place}} \vee d_{x, 0}^g \leq 0.15) \wedge i_{\text{place, obj\_left\_goal}} \leq$   
 743  $i_{\text{place, obj\_at\_goal}} \wedge e_{\text{excessive\_collisions}} \notin E_{\text{place}}$   
 744 ii Dropped to goal success: Agent releases  $x$  beyond 15cm of  $g_{\text{pos}}$ ,  $x$  drops into the  
 745 region within 15cm of  $g_{\text{pos}}$ , and the agent returns to rest.  
 746  $|E_{\text{place}}| \leq 4 \wedge (e_{\text{released\_outside\_goal}} \in E_{\text{place}} \vee d_{x, 0}^g > 0.15) \wedge i_{\text{place, obj\_left\_goal}} \leq$   
 747  $i_{\text{place, obj\_at\_goal}} \wedge e_{\text{excessive\_collisions}} \notin E_{\text{place}}$   
 748 iii Dubious success:  $x$  is manipulated to within 15cm of  $g_{\text{pos}}$ , and the robot returns to rest,  
 749 but  $x$  leaves  $g$  before truncation.  
 750  $i_{\text{place, obj\_at\_goal}} < i_{\text{place, obj\_left\_goal}} \wedge e_{\text{excessive\_collisions}} \notin E_{\text{place}}$   
 751 iv Winding success:  $x$  leaves the goal at least once, but the agent (eventually) successfully  
 752 places/drops  $x$  to within 15cm of  $g_{\text{pos}}$ , where it remains as the agent returns to rest.  
 753  $|E_{\text{place}}| > 4 \wedge i_{\text{place, obj\_at\_goal}} > i_{\text{place, obj\_left\_goal}} \wedge e_{\text{excessive\_collisions}} \notin E_{\text{place}}$   
 754 v Success then excessive collisions: The agent successfully places/drops  $x$  to within  
 755 15cm of  $g_{\text{pos}}$  and returns to rest, but exceeds collision threshold after.  
 756  $e_{\text{excessive\_collisions}} \in E_{\text{place}}$

- 757 • Failure Modes: if  $e_{\text{success}} \notin E_{\text{place}}$ , then categorize using the following failure modes:
- 758 vi Excessive collision failure: Agent exceeds collision threshold.
- 759  $e_{\text{excessive\_collisions}} \in E_{\text{place}}$
- 760 vii Didn't grasp failure: Agent fails to grasp  $x$  at initialization.
- 761  $E_{\text{place}} = () \wedge e_{\text{excessive\_collisions}} \notin E_{\text{place}}$
- 762 viii Didn't reach goal failure: Agent grasps  $x$ , but cannot manipulate  $x$  to within 15cm of
- 763  $g_{\text{pos}}$ .
- 764  $|E_{\text{place}}| > 0 \wedge e_{\text{obj\_at\_goal}} \notin E_{\text{place}} \wedge e_{\text{excessive\_collisions}} \notin E_{\text{place}}$
- 765 ix Place in goal failure: Agent places  $x$  to within 15cm of  $g_{\text{pos}}$ , but  $x$  leaves this region
- 766 (i.e., rolls or falls out) before the agent returns to rest.
- 767 First, we define
- 768  $\mathbf{1}_{\text{placed\_is\_latest\_sequence}} = (|E_{\text{place}}| \leq 2 \wedge d_{x,0}^g \leq 0.15) \vee (i_{\text{place, released\_at\_goal}} >$
- 769  $i_{\text{place, released\_outside\_goal}} \wedge i_{\text{place, released\_at\_goal}} > i_{\text{place, grasped}})$
- 770 Hence, we have failure mode definition
- 771  $e_{\text{obj\_at\_goal}} \in E_{\text{place}} \wedge \mathbf{1}_{\text{placed\_is\_latest\_sequence}} \wedge i_{\text{place, obj\_left\_goal}} >$
- 772  $i_{\text{place, obj\_at\_goal}} \wedge e_{\text{excessive\_collisions}} \notin E_{\text{place}}$
- 773 x Dropped to goal failure: Agent drops  $x$  beyond 15cm away from  $g_{\text{pos}}$ , and  $x$  drops into
- 774 the region within 15cm of  $g_{\text{pos}}$ , but leaves this region (i.e., rolls or falls out) before the
- 775 agent returns to rest. First, we define
- 776  $\mathbf{1}_{\text{dropped\_is\_latest\_sequence}} = (|E_{\text{place}}| \leq 2 \wedge d_{x,0}^g > 0.15) \vee$
- 777  $(i_{\text{place, released\_outside\_goal}} > i_{\text{place, released\_at\_goal}} \wedge i_{\text{place, released\_outside\_goal}} >$
- 778  $i_{\text{place, grasped}})$
- 779 Hence, we have failure mode definition
- 780  $e_{\text{obj\_at\_goal}} \in E_{\text{place}} \wedge \mathbf{1}_{\text{dropped\_is\_latest\_sequence}} \wedge i_{\text{place, obj\_left\_goal}} >$
- 781  $i_{\text{place, obj\_at\_goal}} \wedge e_{\text{excessive\_collisions}} \notin E_{\text{place}}$
- 782 xi Won't let go failure: The agent is able to manipulate  $x$  to within 15cm of  $g_{\text{pos}}$ , but does
- 783 not release  $x$ .
- 784  $e_{\text{obj\_at\_goal}} \in E_{\text{place}} \wedge i_{\text{place, grasped}} > i_{\text{place, released\_at\_goal}} \wedge i_{\text{place, grasped}} >$
- 785  $i_{\text{place, released\_outside\_goal}} \wedge e_{\text{excessive\_collisions}} \notin E_{\text{place}}$
- 786 xii Too slow failure: The agent is able to manipulate  $x$  to within 15cm of the goal, releases
- 787  $x$ , but is unable to return to rest before truncation.
- 788 The condition is no other failure mode is applicable. This also implies
- 789  $i_{\text{place, obj\_at\_goal}} > i_{\text{place, obj\_left\_goal}} \wedge e_{\text{excessive\_collisions}} \notin E_{\text{place}}$

790 **Open** $[a](a_{\text{pos}})$ : Open articulation  $a$  with handle at  $a_{\text{pos}}$ .

- Events: First, define indicator

$$\mathbf{1}_{\text{slightly\_opened}(a),t} = \mathbf{1} \{a_{q,t} \geq 0.1 \cdot (a_{q\text{max}} - a_{q\text{min}}) + a_{q\text{min}}\}$$

791 Now, we define time-conditioned events at timestep  $t$ :

$$\begin{aligned} e_{\text{contact}} &= |F_{ee,a,t-1}| = 0 \wedge |F_{ee,a,t}| \geq 0 \\ e_{\text{opened}} &= \neg \mathbf{1}_{\text{open}(a),t-1} \wedge \mathbf{1}_{\text{open}(a),t} \\ e_{\text{slightly\_opened}} &= \neg \mathbf{1}_{\text{slightly\_opened}(a),t-1} \wedge \mathbf{1}_{\text{slightly\_opened}(a),t} \\ e_{\text{closed}} &= \mathbf{1}_{\text{open}(a),t-1} \wedge \neg \mathbf{1}_{\text{open}(a),t} \\ e_{\text{success}} &= \neg \mathbf{1}_{\text{success},t-1} \wedge \mathbf{1}_{\text{success},t} \\ e_{\text{excessive\_collisions}} &= C_{[0:t-1]} \leq 10000 \wedge C_{[0:t]} > 10000 \end{aligned}$$

792 For  $t \in \{1, \dots, n\}$  (in increasing order), we evaluate each  $e_{\text{event}}$  in the order shown above.

793 If  $e_{\text{event}} = 1$ , we add it to  $E_{\text{open}}$ .

- 794 • Success Modes: if  $e_{\text{success}} \in E_{\text{open}}$ , then categorize using the following success modes:
- 795 i Open success: Agent successfully opens  $a$  and returns to rest without excessive colli-
- 796 sions.
- 797  $e_{\text{excessive\_collisions}} \notin E_{\text{open}} \wedge i_{\text{open, opened}} > i_{\text{open, closed}}$



- 798 ii Dubious success: Agent successfully opens  $a$  and returns to rest without excessive  
799 collisions, but accidentally closes  $a$  after  
800  $e_{\text{excessive\_collisions}} \notin E_{\text{open}} \wedge i_{\text{open,opened}} < i_{\text{open,closed}}$   
801 iii Success then excessive collisions: Agent successfully opens  $a$  and returns to rest, but  
802 exceeds collision threshold after.  
803  $e_{\text{excessive\_collisions}} \notin E_{\text{open}}$   
804 • Failure Modes: if  $e_{\text{success}} \notin E_{\text{open}}$ , then categorize using the following failure modes:  
805 iv Excessive collision failure: Agent exceeds collision threshold.  
806  $e_{\text{excessive\_collisions}} \in E_{\text{open}}$   
807 v Can't reach articulation failure: Agent cannot reach  $a$ .  
808  $e_{\text{contact}} \notin E_{\text{open}} \wedge e_{\text{excessive\_collisions}} \notin E_{\text{open}}$   
809 vi Closed after open failure: Agent opens  $a$ , but closes it before returning to rest.  
810  $e_{\text{closed}} \in E_{\text{open}} \wedge i_{\text{open,closed}} > i_{\text{open,opened}} \wedge i_{\text{open,closed}} > i_{\text{open,slightly\_opened}} \wedge$   
811  $e_{\text{excessive\_collisions}} \notin E_{\text{open}}$   
812 vii Slightly opened failure: Agent at least slightly opens  $a$ , but cannot fully open it.  
813 Previous failure modes are not applicable, and  $i_{\text{open,slightly\_opened}} > i_{\text{open,opened}} \wedge$   
814  $i_{\text{open,slightly\_opened}} > i_{\text{open,closed}} \wedge e_{\text{excessive\_collisions}} \notin E_{\text{open}}$   
815 viii Too slow failure: Agent is able to open  $a$ , but cannot return to rest in time.  
816 Previous failure modes are not applicable, and  $e_{\text{opened}} \in E_{\text{open}}$   
817 ix Can't open failure: Agent reaches  $a$ , but cannot open it.  
818 The condition is no other failure mode is applicable. This also implies  $e_{\text{contact}} \in$   
819  $E_{\text{open}} \wedge e_{\text{opened}} \notin E_{\text{open}}$

820 **Close** $[a](a_{\text{pos}})$ : Close articulation  $a$  with handle at  $a_{\text{pos}}$ .

- Events: First, define indicator

$$\mathbf{1}_{\text{slightly\_closed}(a),t} = \mathbf{1} \{a_{q,t} < a_{q,0} - 0.05 \cdot (a_{q\text{max}} - q_{q\text{min}})\}$$

821 Now, we define time-conditioned events at timestep  $t$ :

$$\begin{aligned} e_{\text{contact}} &= |F_{ee,a,t-1}| = 0 \wedge |F_{ee,a,t}| \geq 0 \\ e_{\text{closed}} &= \neg \mathbf{1}_{\text{closed}(a),t-1} \wedge \mathbf{1}_{\text{closed}(a),t} \\ e_{\text{slightly\_closed}} &= \neg \mathbf{1}_{\text{slightly\_closed}(a),t-1} \wedge \mathbf{1}_{\text{slightly\_closed}(a),t} \\ e_{\text{open}} &= \mathbf{1}_{\text{closed}(a),t-1} \wedge \neg \mathbf{1}_{\text{closed}(a),t} \\ e_{\text{success}} &= \neg \mathbf{1}_{\text{success},t-1} \wedge \mathbf{1}_{\text{success},t} \\ e_{\text{excessive\_collisions}} &= C_{[0:t-1]} \leq 10000 \wedge C_{[0:t]} > 10000 \end{aligned}$$

822 For  $t \in \{1, \dots, n\}$  (in increasing order), we evaluate each  $e_{\text{event}}$  in the order shown above.  
823 If  $e_{\text{event}} = 1$ , we add it to  $E_{\text{close}}$ .

- 824 • Success Modes: if  $e_{\text{success}} \in E_{\text{close}}$ , then categorize using the following success modes:  
825 i Close success: Agent successfully closes  $a$  and returns to rest without excessive  
826 collisions.  
827  $e_{\text{excessive\_collisions}} \notin E_{\text{close}} \wedge i_{\text{close,closed}} > i_{\text{close,opened}}$   
828 ii Dubious success: Agent successfully closes  $a$  and returns to rest without excessive  
829 collisions, but accidentally opens  $a$  after.  
830  $e_{\text{excessive\_collisions}} \notin E_{\text{close}} \wedge i_{\text{close,closed}} < i_{\text{close,opened}}$   
831 iii Success then excessive collisions: Agent successfully closes  $a$  and returns to rest, but  
832 exceeds collision threshold after.  
833  $e_{\text{excessive\_collisions}} \notin E_{\text{close}}$   
834 • Failure Modes: if  $e_{\text{success}} \notin E_{\text{close}}$ , then categorize using the following failure modes:  
835 iv Excessive collision failure: Agent exceeds collision threshold.  
836  $e_{\text{excessive\_collisions}} \in E_{\text{close}}$   
837 v Can't reach articulation failure: Agent cannot reach  $a$ .  
838  $e_{\text{contact}} \notin E_{\text{close}} \wedge e_{\text{excessive\_collisions}} \notin E_{\text{close}}$

- 839 vi Opened after closed failure: Agent closes  $a$ , but opens it before returning to rest.  
840  $e_{\text{closed}} \in E_{\text{close}} \wedge i_{\text{close,opened}} > i_{\text{close,closed}} \wedge i_{\text{close,opened}} > i_{\text{close,slightly\_closed}} \wedge$   
841  $e_{\text{excessive\_collisions}} \notin E_{\text{close}}$
- 842 vii Slightly closed failure: Agent at least slightly closes  $a$ , but cannot fully close it.  
843 Previous failure modes are not applicable, and  $i_{\text{close,slightly\_closed}} > i_{\text{close,closed}} \wedge$   
844  $i_{\text{close,slightly\_closed}} > i_{\text{close,opened}} \wedge e_{\text{excessive\_collisions}} \notin E_{\text{close}}$
- 845 viii Too slow failure: Agent is able to close  $a$ , but cannot return to rest in time.  
846 Previous failure modes are not applicable, and  $e_{\text{closed}} \in E_{\text{close}}$
- 847 ix Can't close failure: Agent reaches  $a$ , but cannot close it.  
848 The condition is no other failure mode is applicable. This also implies  $e_{\text{contact}} \in$   
849  $E_{\text{close}} \wedge e_{\text{closed}} \notin E_{\text{close}}$

### 850 A.6.3 Trajectory Categorization Statistics

851 In Tables 6-13, we categorize trajectories with our automated event labeling method. We run 1000  
852 episodes for every task/subtask/target combination using all relevant policies (RL-Per, RL-All, IL)  
853 for each object/articulation. We provide success once rate (**SoR**), success at end rate (**SaeR**), failure  
854 rate (**FR**), and proportions for each success and failure mode as percentages (labeled with roman  
855 numerals corresponding to those use in Appendix A.6.2).

Table 6: Train split Pick policy trajectory labeling on 1000 episodes per target object. All numbers are percentages. Best viewed zoomed.

TASK	OBJ	TYPE	SoR	SaeR	(i)	(ii)	(iii)	(iv)	FR	(v)	(vi)	(vii)	(viii)	(ix)
TH	002	RL-Per	82.34	72.52	70.63	1.88	0.00	9.82	17.66	13.79	3.37	0.40	0.10	0.00
		RL-All	78.97	60.81	58.43	2.38	0.00	18.15	21.03	13.69	5.65	0.89	0.50	0.30
		IL	72.62	70.63	67.76	2.88	0.20	1.79	27.38	21.03	0.69	1.79	1.29	2.58
	003	RL-Per	71.63	62.80	60.91	1.88	0.10	8.73	28.37	17.26	7.64	2.48	0.89	0.10
		RL-All	29.46	23.41	23.02	0.40	0.00	6.05	70.54	34.52	6.25	28.17	1.19	0.40
		IL	17.96	17.16	16.87	0.30	0.00	0.79	82.04	49.01	0.20	31.25	0.89	0.69
	004	RL-Per	78.47	68.15	65.48	2.68	0.00	10.32	21.53	13.29	6.25	1.19	0.60	0.20
		RL-All	74.60	57.64	55.16	2.48	0.00	16.96	25.40	16.27	6.25	1.88	0.40	0.60
		IL	60.81	57.44	54.27	3.17	0.00	3.37	39.19	27.18	0.50	6.05	1.59	3.87
	005	RL-Per	81.05	78.27	75.10	3.17	0.00	2.78	18.95	15.67	2.58	0.40	0.10	0.20
		RL-All	76.69	62.30	59.13	3.17	0.20	14.19	23.31	17.06	5.16	0.30	0.40	0.40
		IL	74.01	70.73	66.37	4.37	0.10	3.17	25.99	21.13	0.40	0.79	0.89	2.78
	007	RL-Per	83.23	80.36	78.57	1.79	0.20	2.68	16.77	10.52	5.95	0.20	0.10	0.00
		RL-All	77.98	70.44	69.44	0.99	0.00	7.54	22.02	15.97	5.56	0.10	0.10	0.30
		IL	76.59	75.20	72.42	2.78	0.10	1.29	23.41	18.95	1.59	1.69	0.20	0.99
	008	RL-Per	75.99	72.22	63.19	9.03	0.50	3.27	24.01	17.36	3.08	2.18	0.79	0.60
		RL-All	73.91	62.80	55.95	6.85	0.60	10.52	26.09	18.25	5.36	1.69	0.69	0.10
		IL	65.18	62.50	54.07	8.43	0.50	2.18	34.82	26.39	0.40	3.77	2.18	2.08
	009	RL-Per	81.25	76.69	71.63	5.06	0.40	4.17	18.75	12.40	5.46	0.50	0.30	0.10
		RL-All	71.43	60.42	50.10	10.32	0.40	10.62	28.57	20.54	4.86	2.28	0.60	0.30
		IL	67.16	64.29	55.85	8.43	0.79	2.08	32.84	25.00	0.79	3.08	2.38	1.59
	010	RL-Per	81.65	52.78	48.61	4.17	0.10	28.77	18.35	12.40	4.86	0.79	0.20	0.10
		RL-All	75.50	61.90	55.16	6.75	0.00	13.59	24.50	18.95	4.27	0.99	0.20	0.10
		IL	58.33	54.17	48.02	6.15	0.50	3.67	41.67	26.98	0.79	8.43	1.19	4.27
	024	RL-Per	82.74	78.47	68.35	10.12	0.20	4.07	17.26	12.90	3.67	0.30	0.20	0.20
		RL-All	73.91	65.08	56.15	8.93	0.00	8.83	26.09	19.05	6.15	0.69	0.10	0.10
		IL	62.20	58.63	50.40	8.23	0.69	2.88	37.80	25.20	0.20	7.74	2.18	2.48
	all	RL-Per	81.75	73.41	67.26	6.15	0.20	8.13	18.25	12.40	4.17	1.19	0.30	0.20
		RL-All	71.63	59.13	54.17	4.96	0.30	12.20	28.37	19.74	4.96	3.17	0.30	0.20
		IL	61.11	59.42	54.56	4.86	0.20	1.49	38.89	26.39	0.69	7.64	0.89	3.27
PG	002	RL-Per	69.05	55.16	50.89	4.27	0.40	13.49	30.95	14.58	16.17	0.10	0.00	0.10
		RL-All	62.70	49.40	38.10	11.31	1.49	11.81	37.30	24.60	11.31	0.89	0.50	0.00
		IL	63.10	59.82	55.16	4.66	0.20	3.08	36.90	31.55	2.38	1.09	0.99	0.89
	003	RL-Per	51.98	43.15	40.67	2.48	2.08	6.75	48.02	25.10	12.30	8.63	1.79	0.20
		RL-All	11.51	8.13	7.64	0.50	0.60	2.78	88.49	60.62	11.21	16.17	0.20	0.30
		IL	16.27	14.38	13.79	0.60	1.29	0.60	83.73	67.06	2.28	12.10	1.98	0.30
	004	RL-Per	64.48	52.88	50.20	2.68	0.20	11.41	35.52	19.44	13.99	0.69	0.10	1.29
		RL-All	59.82	46.03	37.10	8.93	1.39	12.40	40.18	26.98	11.41	0.99	0.40	0.40
		IL	51.09	47.32	44.84	2.48	0.50	3.27	48.91	39.98	2.38	2.88	1.98	1.69
	005	RL-Per	61.21	48.51	44.74	3.77	0.30	12.40	38.79	25.79	11.51	0.10	0.20	1.19
		RL-All	63.29	51.29	39.58	11.71	0.69	11.31	36.71	25.89	10.42	0.10	0.30	0.00
		IL	61.01	56.25	54.07	2.18	0.20	4.56	38.99	34.33	2.28	0.50	0.89	0.99
	007	RL-Per	66.57	52.58	47.02	5.56	0.10	13.89	33.43	18.55	13.29	1.19	0.30	0.10
		RL-All	64.38	45.63	34.42	11.21	0.89	17.86	35.62	23.71	10.81	0.99	0.10	0.00
		IL	61.61	59.82	57.04	2.78	0.00	1.79	38.39	32.14	3.08	1.59	0.89	0.69
	008	RL-Per	62.90	45.73	37.00	8.73	0.89	16.27	37.10	21.33	14.38	0.79	0.50	0.10
		RL-All	45.93	34.03	21.63	12.40	2.58	9.33	54.07	36.81	12.40	3.17	1.49	0.20
		IL	40.38	35.71	32.24	3.47	1.19	3.47	59.62	49.80	2.78	3.97	2.58	0.50
	009	RL-Per	63.59	46.73	41.67	5.06	1.09	15.77	36.41	18.75	16.47	0.30	0.50	0.40
		RL-All	49.01	38.49	26.19	12.30	1.69	8.83	50.99	32.14	13.00	3.67	1.69	0.50
		IL	43.25	39.78	36.01	3.77	1.19	2.28	56.75	45.73	3.77	4.56	2.18	0.50
	010	RL-Per	65.18	51.49	44.64	6.85	0.30	13.39	34.82	20.93	13.29	0.20	0.30	0.10
		RL-All	54.76	42.06	27.58	14.48	1.49	11.21	45.24	30.26	12.10	2.18	0.30	0.40
		IL	50.99	48.61	41.77	6.85	0.10	2.28	49.01	41.27	2.68	2.38	1.69	0.99
	024	RL-Per	74.60	56.45	39.58	16.87	0.30	17.86	25.40	15.87	8.73	0.30	0.20	0.30
		RL-All	51.09	35.02	22.92	12.10	0.79	15.28	48.91	37.00	10.12	1.09	0.60	0.10
		IL	20.73	18.25	14.68	3.57	0.60	1.88	79.27	66.37	1.88	7.54	1.49	1.98
	all	RL-Per	66.57	52.78	46.63	6.15	0.40	13.39	33.43	19.54	11.81	1.09	0.60	0.40
		RL-All	51.88	37.70	28.17	9.52	1.79	12.40	48.12	33.93	10.12	2.48	1.29	0.30
		IL	44.64	42.36	39.38	2.98	0.40	1.88	55.36	47.22	1.49	4.27	1.49	0.89
ST	013	RL-Per	65.87	54.07	47.82	6.25	0.30	11.51	34.13	11.11	21.73	0.00	0.40	0.89
		RL-All	59.03	35.71	33.04	2.68	0.10	23.21	40.97	16.57	24.01	0.10	0.00	0.30
		IL	53.67	39.48	35.62	3.87	0.89	13.29	46.33	43.45	1.39	0.69	0.50	0.30
	024	RL-Per	94.35	85.81	75.30	10.52	0.20	8.33	5.65	4.86	0.50	0.10	0.20	0.00
		RL-All	93.95	79.37	64.68	14.68	0.20	14.38	6.05	5.06	0.30	0.00	0.50	0.20
		IL	65.58	58.63	51.88	6.75	0.20	6.75	34.42	24.21	1.29	5.26	2.68	0.99
	all	RL-Per	80.85	69.64	60.62	9.03	0.20	11.01	19.15	8.04	10.12	0.00	0.30	0.69
		RL-All	75.69	56.55	47.52	9.03	0.10	19.05	24.31	11.01	12.40	0.30	0.50	0.10
		IL	60.71	50.40	44.74	5.65	1.09	9.23	39.29	31.25	1.88	3.87	1.29	0.99

Table 7: Val split Pick policy trajectory labeling on 1000 episodes per target object. All numbers are percentages. Best viewed zoomed.

TASK	OBJ	TYPE	SoR	SaeR	(i)	(ii)	(iii)	(iv)	FR	(v)	(vi)	(vii)	(viii)	(ix)
TH	002	RL-Per	80.06	70.63	68.95	1.69	0.30	9.13	19.94	15.77	3.67	0.30	0.00	0.20
		RL-All	78.57	61.71	59.82	1.88	0.00	16.87	21.43	15.18	5.36	0.69	0.10	0.10
		IL	73.61	72.22	69.64	2.58	0.20	1.19	26.39	21.03	0.20	1.69	1.09	2.38
	003	RL-Per	73.41	64.38	61.61	2.78	0.10	8.93	26.59	16.67	6.94	1.98	0.99	0.00
		RL-All	33.73	26.29	25.79	0.50	0.10	7.34	66.27	33.13	7.34	24.50	1.09	0.20
		IL	16.67	16.17	15.58	0.60	0.10	0.40	83.33	47.52	0.10	33.93	0.69	1.09
	004	RL-Per	77.28	69.44	66.96	2.48	0.00	7.84	22.72	13.39	6.85	1.29	0.79	0.40
		RL-All	75.20	57.44	54.07	3.37	0.00	17.76	24.80	15.97	6.35	1.88	0.20	0.40
		IL	59.62	57.34	54.76	2.58	0.20	2.08	40.38	27.78	0.40	7.24	1.19	3.77
	005	RL-Per	81.15	78.08	75.79	2.28	0.10	2.98	18.85	15.87	2.78	0.20	0.00	0.00
		RL-All	75.50	61.90	58.43	3.47	0.10	13.49	24.50	18.55	5.06	0.20	0.40	0.30
		IL	71.03	69.44	65.77	3.67	0.20	1.39	28.97	21.92	0.99	2.28	0.79	2.98
	007	RL-Per	82.74	77.98	76.69	1.29	0.00	4.76	17.26	11.61	5.46	0.20	0.00	0.00
		RL-All	77.78	69.44	68.75	0.69	0.00	8.33	22.22	15.18	6.55	0.40	0.00	0.10
		IL	72.72	71.23	67.66	3.57	0.10	1.39	27.28	22.22	1.29	1.79	0.10	1.88
	008	RL-Per	75.40	70.34	60.62	9.72	0.69	4.37	24.60	18.45	2.58	2.48	0.79	0.30
		RL-All	72.02	63.19	55.95	7.24	0.40	8.43	27.98	19.54	5.26	2.38	0.79	0.00
		IL	61.61	60.32	54.76	5.56	0.50	0.79	38.39	29.37	0.89	3.87	2.58	1.69
	009	RL-Per	78.57	74.70	69.15	5.56	0.30	3.57	21.43	14.98	5.26	0.89	0.20	0.10
		RL-All	71.63	60.62	52.78	7.84	0.30	10.71	28.37	20.34	6.35	0.60	0.99	0.10
		IL	64.48	62.20	54.96	7.24	1.09	1.19	35.52	28.57	1.09	2.78	1.88	1.19
	010	RL-Per	82.24	53.37	50.00	3.37	0.00	28.87	17.76	13.19	4.07	0.50	0.00	0.00
		RL-All	74.90	63.99	56.94	7.04	0.10	10.81	25.10	19.25	4.46	0.79	0.30	0.30
		IL	55.75	52.68	46.83	5.85	0.10	2.98	44.25	27.88	0.30	9.42	1.69	4.96
	024	RL-Per	79.56	74.31	63.79	10.52	0.50	4.76	20.44	15.58	4.46	0.20	0.20	0.00
		RL-All	69.74	62.90	53.37	9.52	0.00	6.85	30.26	22.32	7.14	0.50	0.20	0.10
		IL	58.04	54.76	44.94	9.82	0.40	2.88	41.96	29.96	0.30	7.04	1.39	3.27
	all	RL-Per	77.48	69.44	65.77	3.67	0.30	7.74	22.52	16.57	4.86	0.89	0.00	0.20
		RL-All	68.15	57.34	53.97	3.37	0.00	10.81	31.85	21.73	5.36	4.27	0.10	0.40
		IL	59.03	57.04	53.87	3.17	0.20	1.79	40.97	28.47	0.30	8.43	1.39	2.38
PG	002	RL-Per	84.62	67.56	63.69	3.87	0.89	16.17	15.38	12.10	2.88	0.10	0.10	0.20
		RL-All	76.98	54.27	41.47	12.80	2.68	20.04	23.02	20.34	0.99	1.29	0.30	0.10
		IL	74.11	68.45	64.58	3.87	1.19	4.46	25.89	20.93	0.50	1.29	2.18	0.99
	003	RL-Per	56.15	42.56	39.68	2.88	2.38	11.21	43.85	30.46	2.08	9.72	1.39	0.20
		RL-All	14.19	11.41	10.02	1.39	0.60	2.18	85.81	57.24	0.69	26.88	0.99	0.00
		IL	18.25	16.77	16.37	0.40	0.69	0.79	81.75	61.90	0.20	16.67	2.58	0.40
	004	RL-Per	69.74	60.52	57.24	3.27	0.30	8.93	30.26	25.00	2.08	1.29	0.40	1.49
		RL-All	71.23	47.82	38.99	8.83	4.17	19.25	28.77	23.61	1.29	2.78	0.89	0.20
		IL	58.43	53.57	51.19	2.38	0.40	4.46	41.57	34.33	0.30	4.17	1.49	1.29
	005	RL-Per	76.69	64.88	60.12	4.76	0.20	11.61	23.31	21.43	0.69	0.60	0.30	0.30
		RL-All	75.60	53.97	40.87	13.10	1.19	20.44	24.40	21.03	1.09	1.79	0.30	0.20
		IL	75.00	68.35	65.67	2.68	0.30	6.35	25.00	20.54	0.79	1.19	1.29	1.19
	007	RL-Per	76.98	56.25	50.69	5.56	0.30	20.44	23.02	19.35	2.58	0.60	0.40	0.10
		RL-All	76.98	56.15	41.96	14.19	0.40	20.44	23.02	19.64	1.59	1.79	0.00	0.00
		IL	72.02	69.84	65.48	4.37	0.10	2.08	27.98	21.83	1.69	2.78	0.79	0.89
	008	RL-Per	73.21	48.91	37.60	11.31	0.69	23.61	26.79	22.52	1.59	1.98	0.30	0.40
		RL-All	58.93	42.86	24.70	18.15	3.67	12.40	41.07	29.07	2.38	6.65	2.98	0.00
		IL	44.35	37.40	32.04	5.36	1.88	5.06	55.65	44.15	1.59	5.65	3.47	0.79
	009	RL-Per	70.73	38.00	32.24	5.75	1.88	30.85	29.27	26.19	1.69	0.99	0.20	0.20
		RL-All	62.90	46.92	29.37	17.56	2.88	13.10	37.10	26.09	2.38	5.36	2.98	0.30
		IL	44.54	38.79	33.73	5.06	1.79	3.97	55.46	42.56	1.19	7.64	3.67	0.40
	010	RL-Per	74.50	55.26	48.61	6.65	0.60	18.65	25.50	23.91	0.50	0.79	0.30	0.00
		RL-All	70.04	49.40	34.42	14.98	2.88	17.76	29.96	23.41	2.38	3.57	0.60	0.00
		IL	59.23	57.04	52.18	4.86	0.50	1.69	40.77	33.93	0.69	2.98	2.18	0.99
	024	RL-Per	78.17	55.65	39.09	16.57	0.10	22.42	21.83	15.08	5.75	0.50	0.10	0.40
		RL-All	61.21	37.00	25.79	11.21	1.19	23.02	38.79	35.81	0.69	1.49	0.79	0.00
		IL	22.82	20.14	16.27	3.87	0.30	2.38	77.18	65.28	0.79	7.64	0.89	2.58
	all	RL-Per	72.32	53.47	45.93	7.54	0.50	18.35	27.68	23.02	1.39	2.38	0.79	0.10
		RL-All	62.10	43.75	31.25	12.50	1.79	16.57	37.90	28.47	0.89	7.54	0.89	0.10
		IL	52.78	47.52	43.75	3.77	0.50	4.76	47.22	36.90	0.69	6.55	1.79	1.29
ST	013	RL-Per	80.36	58.43	48.02	10.42	0.20	21.73	19.64	17.96	0.30	0.00	0.20	1.19
		RL-All	66.67	26.29	19.74	6.55	0.10	40.28	33.33	31.94	0.89	0.30	0.20	0.00
		IL	78.08	55.56	51.09	4.46	1.49	21.03	21.92	18.06	1.49	0.30	0.69	1.39
	024	RL-Per	93.65	83.33	71.83	11.51	0.20	10.12	6.35	5.85	0.10	0.20	0.20	0.00
		RL-All	89.98	77.38	62.00	15.38	0.40	12.20	10.02	9.33	0.30	0.20	0.20	0.00
		IL	62.20	54.86	48.61	6.25	0.20	7.14	37.80	26.59	2.28	5.95	1.39	1.59
	all	RL-Per	88.49	70.04	61.61	8.43	0.00	18.45	11.51	10.42	0.00	0.00	0.40	0.69
		RL-All	79.86	52.58	40.58	12.00	0.20	27.08	20.14	19.44	0.30	0.10	0.20	0.10
		IL	72.62	58.63	52.98	5.65	0.20	13.79	27.38	21.03	1.88	2.68	1.09	0.69

Table 8: Train split Place policy trajectory labeling on 1000 episodes per target object. All numbers are percentages. Best viewed zoomed.

TASK	OBJ	TYPE	SoR	SaeR	(i)	(ii)	(iii)	(iv)	(v)	FR	(vi)	(vii)	(viii)	(ix)	(x)	(xi)	(xii)
TH	002	RL-Per	69.44	65.38	44.35	19.05	1.39	1.98	2.68	30.56	20.14	0.00	2.88	2.28	3.67	1.59	0.00
		RL-All	67.76	58.04	26.69	29.37	0.79	1.98	8.93	32.24	19.15	0.00	1.19	4.27	6.85	0.79	0.00
		IL	70.44	61.11	51.59	7.84	0.69	1.69	8.63	29.56	18.25	0.00	3.47	4.66	2.38	0.40	0.40
	003	RL-Per	54.07	40.48	27.38	1.79	2.38	11.31	11.21	45.93	31.94	0.00	0.50	4.17	0.99	7.64	0.69
		RL-All	52.58	42.86	22.92	18.25	0.99	1.69	8.73	47.42	31.05	0.00	0.79	8.43	5.95	0.89	0.30
		IL	47.32	35.71	20.54	4.86	4.37	10.32	7.24	52.68	32.74	0.20	4.66	5.06	5.06	4.27	0.69
	004	RL-Per	54.76	46.23	6.25	34.92	0.50	5.06	8.04	45.24	24.60	0.00	5.16	1.29	6.85	6.85	0.50
		RL-All	55.06	47.22	21.13	24.40	0.50	1.69	7.34	44.94	24.21	0.00	1.59	5.16	7.94	5.95	0.10
		IL	51.59	45.44	15.97	27.08	0.89	2.38	5.26	48.41	22.32	0.10	5.16	4.66	6.65	9.03	0.50
	005	RL-Per	65.97	56.05	43.06	8.13	0.30	4.86	9.62	34.03	24.01	0.10	1.49	4.37	1.39	2.48	0.20
		RL-All	65.77	59.23	21.53	35.42	0.69	2.28	5.85	34.23	22.62	0.10	2.18	2.48	6.55	0.20	0.10
		IL	62.90	55.95	41.27	12.00	0.69	2.68	6.25	37.10	21.92	0.60	7.04	3.97	3.08	0.40	0.10
	007	RL-Per	73.61	66.37	29.96	33.93	0.10	2.48	7.14	26.39	17.96	0.00	0.69	1.39	6.05	0.00	0.30
		RL-All	70.54	63.19	23.12	39.09	0.20	0.99	7.14	29.46	18.95	0.00	2.38	3.47	4.17	0.30	0.20
		IL	70.93	63.10	33.93	27.48	0.30	1.69	7.54	29.07	17.76	0.40	4.86	1.59	3.77	0.10	0.60
	008	RL-Per	75.40	69.74	30.36	35.71	0.10	3.67	5.56	24.60	19.05	0.00	0.79	0.69	1.79	2.08	0.20
		RL-All	68.06	61.51	20.93	38.79	0.00	1.79	6.55	31.94	23.51	0.00	3.27	2.08	1.88	1.19	0.00
		IL	68.65	60.12	38.49	19.84	0.20	1.79	8.33	31.35	21.43	0.50	2.98	1.49	1.88	2.98	0.10
	009	RL-Per	68.35	53.67	13.69	38.79	0.10	1.19	14.58	31.65	24.11	0.40	2.08	1.49	2.98	0.40	0.20
		RL-All	65.67	59.62	19.54	38.49	0.00	1.59	6.05	34.33	25.99	0.00	3.27	1.09	3.47	0.50	0.00
		IL	59.62	51.09	35.81	13.29	0.00	1.98	8.53	40.38	27.48	0.69	4.56	2.98	1.19	2.68	0.79
	010	RL-Per	71.43	57.84	24.90	30.16	0.10	2.78	13.49	28.57	22.62	0.00	2.08	0.89	1.29	1.69	0.00
		RL-All	73.31	64.98	24.01	39.48	0.10	1.49	8.23	26.69	17.46	0.00	1.98	2.28	4.07	0.89	0.00
		IL	69.35	60.71	39.38	18.85	0.00	2.48	8.63	30.65	21.03	0.00	2.98	3.27	1.39	1.09	0.89
	024	RL-Per	70.73	60.62	45.24	7.64	0.00	7.74	10.12	29.27	21.53	0.00	0.40	5.36	0.79	0.79	0.40
		RL-All	64.38	58.23	26.79	23.81	0.10	7.64	6.05	35.62	27.38	0.00	1.88	2.48	3.67	0.00	0.20
		IL	64.78	57.54	43.06	9.62	0.10	4.86	7.14	35.22	20.83	0.10	5.36	6.45	2.18	0.00	0.30
	all	RL-Per	65.77	55.65	26.79	25.30	0.30	3.57	9.82	34.23	22.82	0.00	1.79	2.68	3.17	3.57	0.20
		RL-All	63.69	56.65	23.12	31.75	0.50	1.79	6.55	36.31	24.50	0.10	2.38	2.58	4.76	1.79	0.20
		IL	61.81	54.56	35.32	15.97	0.30	3.27	6.94	38.19	23.02	0.40	5.06	3.27	3.17	2.68	0.60
PG	002	RL-Per	62.50	52.48	14.88	33.93	1.29	3.67	8.73	37.50	26.69	0.10	6.05	0.60	1.79	1.98	0.30
		RL-All	56.35	32.64	21.23	9.13	2.18	2.28	21.53	43.65	27.88	0.69	8.23	2.78	2.58	1.09	0.40
		IL	56.65	50.40	19.84	29.17	2.78	1.39	3.47	43.35	23.41	0.40	11.21	3.77	4.17	0.00	0.40
	003	RL-Per	52.28	49.21	22.92	24.31	0.99	1.98	2.08	47.72	30.85	0.10	5.56	4.17	2.08	4.86	0.10
		RL-All	47.82	28.57	20.93	4.76	3.57	2.88	15.67	52.18	34.52	0.10	6.94	8.13	1.49	0.50	0.50
		IL	41.57	33.53	17.76	15.28	2.78	0.50	5.26	58.43	27.38	0.10	13.79	8.83	4.56	0.60	3.17
	004	RL-Per	55.95	46.92	22.52	20.54	0.10	3.87	8.93	44.05	32.34	0.00	3.57	2.68	2.68	2.58	0.20
		RL-All	52.08	32.84	23.12	6.94	0.20	2.78	19.05	47.92	29.96	0.00	6.15	5.36	2.08	3.87	0.50
		IL	49.11	44.35	30.16	12.70	0.40	1.49	4.37	50.89	30.06	0.30	8.83	6.75	3.47	1.09	0.40
	005	RL-Per	62.60	50.89	39.58	7.44	0.50	3.87	11.21	37.40	25.20	0.10	4.46	5.16	2.38	0.10	0.00
		RL-All	56.15	37.20	26.39	8.53	0.20	2.28	18.75	43.85	29.96	0.30	7.04	1.19	3.47	1.29	0.60
		IL	56.94	51.98	41.17	8.53	0.89	2.28	4.07	43.06	27.08	0.30	6.45	4.76	3.37	0.00	1.09
	007	RL-Per	63.79	55.95	28.17	22.52	0.20	5.26	7.64	36.21	27.08	0.00	5.65	1.49	1.88	0.00	0.10
		RL-All	56.35	35.91	23.12	11.61	0.00	1.19	20.44	43.65	28.57	0.30	8.33	1.29	1.49	3.57	0.10
		IL	55.95	51.49	29.17	21.23	0.60	1.09	3.87	44.05	28.17	0.30	8.13	3.27	3.17	0.10	0.89
	008	RL-Per	62.30	52.08	16.96	32.14	0.20	2.98	10.02	37.70	23.12	0.10	7.24	2.48	3.47	1.09	0.20
		RL-All	55.46	38.19	23.02	13.49	0.00	1.69	17.26	44.54	30.95	1.09	7.94	1.19	1.39	1.59	0.40
		IL	54.27	50.69	27.18	19.64	0.10	3.87	3.47	45.73	23.21	0.99	9.23	4.07	4.46	1.79	1.98
	009	RL-Per	63.39	54.56	24.31	28.77	0.10	1.49	8.73	36.61	25.89	0.10	6.35	1.88	2.38	0.00	0.00
		RL-All	52.88	33.13	18.75	12.20	0.00	2.18	19.74	47.12	35.42	0.50	5.95	2.38	0.99	1.59	0.30
		IL	56.65	53.77	35.62	15.77	0.10	2.38	2.78	43.35	24.90	0.79	8.83	4.07	1.98	0.89	1.88
	010	RL-Per	63.10	41.77	18.15	19.35	0.30	4.27	21.03	36.90	31.75	0.10	3.57	0.60	0.60	0.20	0.10
		RL-All	57.74	38.39	22.22	13.29	0.10	2.88	19.25	42.26	27.98	0.60	6.94	1.98	2.58	1.98	0.20
		IL	55.56	44.94	27.78	15.08	0.10	2.08	10.52	44.44	30.85	0.40	6.55	3.17	0.99	0.10	2.38
	024	RL-Per	62.30	46.43	13.89	22.82	0.00	9.72	15.87	37.70	27.78	0.00	2.88	0.89	6.05	0.00	0.10
		RL-All	51.98	29.56	12.00	9.72	0.00	7.84	22.42	48.02	38.79	0.00	4.37	1.88	2.58	0.20	0.20
		IL	50.30	46.73	21.33	19.15	0.30	6.25	3.27	49.70	31.55	0.10	12.20	2.28	3.37	0.00	0.20
	all	RL-Per	60.22	48.61	22.32	22.72	0.30	3.57	11.31	39.78	27.38	0.20	5.75	2.48	2.68	0.99	0.30
		RL-All	53.37	33.13	18.85	10.12	0.89	4.17	19.35	46.63	33.13	0.60	7.34	2.18	1.69	1.59	0.10
		IL	50.00	45.63	25.99	17.26	1.09	2.38	3.27	50.00	28.67	0.50	11.01	4.96	3.37	0.40	1.09
ST	013	RL-Per	68.95	61.71	18.45	39.38	1.59	3.87	5.65	31.05	22.02	0.00	0.60	1.69	1.98	4.76	0.00
		RL-All	74.80	67.36	39.29	24.11	0.99	3.97	6.45	25.20	18.95	0.30	0.60	2.28	2.38	0.40	0.30
		IL	65.58	62.50	11.31	46.33	1.29	4.86	1.79	34.42	21.03	0.89	5.95	1.49	4.66	0.00	0.40
	024	RL-Per	78.67	76.39	33.33	29.46	0.50	13.59	1.79	21.33	16.07	0.00	0.40	1.88	2.28	0.40	0.30
		RL-All	71.33	62.90	30.65	12.00	0.20	20.24	8.23	28.67	21.23	0.00	1.98	3.27	1.88	0.20	0.10
		IL	73.51	72.72	23.41	39.68	0.60	9.62	0.20	26.49	10.52	0.00	6.75	4.17	4.96	0.00	0.10
	all	RL-Per	73.31	68.35	25.20	34.23	0.69	8.93	4.27	26.69	17.56	0.20	0.79	2.58	2.88	2.38	0.30
		RL-All	72.82	65.08	35.02	17.36	0.89	12.70	6.85	27.18	20.14	0.20	1.29	2.18	2.88	0.20	0.30
		IL	71.23	69.15	19.05	43.55	0.89	6.55	1.19	28.77	14.19	0.50	6.05	3.17	4.56	0.00	0.30

Table 9: Val split Place policy trajectory labeling on 1000 episodes per target object. All numbers are percentages. Best viewed zoomed.

TASK	OBJ	TYPE	SoR	SacR	(i)	(ii)	(iii)	(iv)	(v)	FR	(vi)	(vii)	(viii)	(ix)	(x)	(xi)	(xii)
TH	002	RL-Per	62.70	58.23	37.40	18.65	1.79	2.18	2.68	37.30	25.10	0.10	3.27	3.17	3.17	2.28	0.20
		RL-All	66.37	58.04	26.88	29.17	0.60	1.98	7.74	33.63	22.02	0.00	1.39	3.27	4.96	1.79	0.20
		IL	69.44	60.71	50.00	9.03	1.59	1.69	7.14	30.56	20.73	0.10	3.17	3.87	1.49	0.79	0.40
	003	RL-Per	56.65	40.87	27.98	1.98	3.27	10.91	12.50	43.35	28.17	0.00	0.40	4.37	1.39	8.43	0.60
		RL-All	53.57	44.15	26.09	15.28	1.39	2.78	8.04	46.43	30.95	0.00	1.09	10.42	3.67	0.30	0.00
		IL	46.23	36.21	19.84	4.86	4.86	11.51	5.16	53.77	34.82	0.00	2.98	5.85	4.76	3.97	1.39
	004	RL-Per	52.88	44.54	6.05	32.14	0.79	6.35	7.54	47.12	24.90	0.00	4.56	2.28	9.13	5.56	0.69
		RL-All	52.88	45.73	21.92	22.22	0.50	1.59	6.65	47.12	26.79	0.00	1.88	5.46	7.24	5.36	0.40
		IL	53.77	48.12	18.25	26.79	0.40	3.08	5.26	46.23	23.41	0.10	5.85	3.37	6.05	7.04	0.40
	005	RL-Per	65.97	58.83	48.02	6.15	0.40	4.66	6.75	34.03	22.62	0.00	1.69	5.26	0.89	2.88	0.69
		RL-All	67.06	59.23	25.89	31.45	0.50	1.88	7.34	32.94	21.23	0.00	1.39	3.27	6.65	0.40	0.00
		IL	65.08	59.82	47.92	9.92	0.60	1.98	4.66	34.92	21.43	0.40	4.66	3.77	3.87	0.20	0.60
	007	RL-Per	72.22	64.98	30.36	32.24	0.00	2.38	7.24	27.78	19.44	0.00	0.89	1.88	5.16	0.00	0.40
		RL-All	69.74	64.19	25.00	38.10	0.20	1.09	5.36	30.26	20.93	0.10	1.69	2.28	4.66	0.50	0.10
		IL	71.63	64.98	35.12	27.58	0.30	2.28	6.35	28.37	19.35	0.00	2.78	2.78	3.17	0.00	0.30
	008	RL-Per	75.30	69.44	28.37	39.48	0.00	1.59	5.85	24.70	18.65	0.00	0.99	0.69	1.79	2.28	0.30
		RL-All	71.13	62.80	22.52	38.89	0.00	1.39	8.33	28.87	21.63	0.00	1.69	1.09	2.98	1.39	0.10
		IL	73.41	65.87	44.54	19.74	0.00	1.59	7.54	26.59	18.75	0.20	1.88	0.79	0.99	3.57	0.40
	009	RL-Per	68.55	54.27	17.96	34.33	0.00	1.98	14.29	31.45	24.70	0.20	1.49	0.99	3.37	0.60	0.10
		RL-All	63.49	57.24	20.54	34.82	0.00	1.88	6.25	36.51	28.27	0.00	3.57	1.29	2.68	0.69	0.00
		IL	58.23	50.20	35.12	12.00	0.10	3.08	7.94	41.77	29.07	0.50	5.06	1.29	2.18	2.78	0.89
	010	RL-Per	68.75	54.56	23.41	27.18	0.10	3.97	14.09	31.25	25.20	0.00	1.98	0.89	1.49	1.59	0.10
		RL-All	68.15	59.33	21.13	37.20	0.10	0.99	8.73	31.85	20.73	0.00	2.68	2.28	5.36	0.69	0.10
		IL	66.37	61.41	40.28	18.15	0.00	2.98	4.96	33.63	24.70	0.00	3.57	2.28	1.09	1.29	0.69
	024	RL-Per	74.50	63.69	49.50	6.65	0.00	7.54	10.81	25.50	20.83	0.00	0.50	2.78	0.79	0.50	0.10
		RL-All	67.66	58.73	27.88	22.32	0.00	8.53	8.93	32.34	24.40	0.10	1.19	2.08	4.37	0.10	0.10
		IL	68.45	59.82	46.73	9.33	0.00	3.77	8.63	31.55	18.45	0.00	4.96	5.85	1.98	0.00	0.30
	all	RL-Per	65.97	56.45	32.04	20.24	0.20	4.17	9.33	34.03	24.31	0.00	1.09	2.08	3.67	2.68	0.20
		RL-All	66.07	58.23	24.90	31.25	0.20	2.08	7.64	33.93	21.23	0.00	1.88	3.37	5.36	1.88	0.20
		IL	63.79	56.94	37.30	15.38	0.89	4.27	5.95	36.21	21.83	0.20	3.97	3.37	3.77	2.68	0.40
PG	002	RL-Per	69.15	56.15	17.36	33.83	1.39	4.96	11.61	30.85	22.52	0.00	2.58	0.79	2.38	2.38	0.20
		RL-All	58.83	29.96	21.92	6.45	1.98	1.59	26.88	41.17	29.27	1.39	3.67	3.08	2.48	1.19	0.10
		IL	58.93	50.79	22.42	27.08	2.98	1.29	5.16	41.07	17.16	0.99	13.69	3.77	4.76	0.00	0.69
	003	RL-Per	58.33	53.37	24.50	25.50	1.69	3.37	3.27	41.67	27.18	0.00	3.08	4.46	3.47	2.98	0.50
		RL-All	50.20	27.58	21.03	3.87	1.79	2.68	20.83	49.80	36.81	0.00	3.97	7.64	0.79	0.50	0.10
		IL	44.15	39.58	20.73	17.56	2.48	1.29	2.08	55.85	20.63	0.00	17.36	8.13	5.75	0.30	3.67
	004	RL-Per	60.71	48.71	27.98	17.16	0.30	3.57	11.71	39.29	28.08	0.00	0.89	3.57	3.17	3.17	0.40
		RL-All	59.52	30.56	20.73	5.85	0.00	3.97	28.97	40.48	27.98	0.00	2.28	4.37	1.09	4.46	0.30
		IL	53.77	49.21	33.23	14.98	0.99	0.99	3.57	46.23	23.12	0.10	6.65	8.73	4.66	2.08	0.89
	005	RL-Per	67.36	47.72	38.99	5.36	1.39	3.37	18.25	32.64	23.02	0.10	1.69	5.85	1.49	0.40	0.10
		RL-All	62.10	37.00	26.09	8.83	0.30	2.08	24.80	37.90	28.67	0.30	2.38	2.48	2.98	0.99	0.10
		IL	62.20	55.56	44.25	8.23	1.59	3.08	5.06	37.80	19.64	0.30	11.11	3.77	1.88	0.00	1.09
	007	RL-Per	75.79	59.92	27.88	26.29	0.10	5.75	15.77	24.21	19.25	0.00	0.99	1.69	1.88	0.00	0.40
		RL-All	62.70	35.02	22.72	10.32	0.10	1.98	27.58	37.30	28.97	0.40	2.78	0.79	1.88	2.28	0.20
		IL	65.77	59.62	29.76	27.88	0.69	1.98	5.46	34.23	16.07	0.20	9.62	3.17	2.98	0.00	2.18
	008	RL-Per	71.53	58.33	17.46	36.90	0.00	3.97	13.19	28.47	18.45	0.10	2.28	2.28	4.17	0.89	0.30
		RL-All	54.46	31.35	16.47	13.10	0.00	1.79	23.12	45.54	34.42	0.79	5.06	1.79	1.19	2.18	0.10
		IL	59.42	55.56	28.87	23.51	0.30	3.17	3.57	40.58	17.46	0.69	9.82	3.37	4.37	2.78	2.08
	009	RL-Per	66.87	57.44	25.89	28.77	0.00	2.78	9.42	33.13	22.62	0.50	5.56	1.88	2.38	0.10	0.10
		RL-All	54.86	33.04	20.24	11.31	0.00	1.49	21.83	45.14	32.24	0.79	6.25	1.98	1.49	1.88	0.50
		IL	59.13	55.85	34.42	18.06	0.20	3.37	3.08	40.87	15.28	1.09	15.67	3.87	1.79	1.88	1.29
	010	RL-Per	68.06	39.38	17.86	19.64	0.10	1.88	28.57	31.94	27.98	0.00	1.39	0.79	1.39	0.40	0.00
		RL-All	64.48	37.10	21.92	12.80	0.00	2.38	27.38	35.52	27.38	0.79	2.78	1.29	1.69	1.49	0.10
		IL	62.30	49.31	29.76	17.66	0.50	1.88	12.50	37.70	21.63	0.50	8.13	3.37	1.69	0.10	2.28
	024	RL-Per	67.06	49.31	12.20	23.31	0.00	13.79	17.76	32.94	23.21	0.00	1.19	1.39	6.94	0.00	0.20
		RL-All	56.75	28.37	12.50	9.72	0.00	6.15	28.37	43.25	37.00	0.00	1.69	1.69	2.58	0.30	0.00
		IL	54.07	48.02	24.90	17.96	0.10	5.16	5.95	45.93	23.71	0.00	14.09	3.77	3.97	0.00	0.40
	all	RL-Per	65.67	52.38	24.31	22.72	0.79	5.36	12.50	34.33	25.10	0.00	2.28	2.58	3.37	0.99	0.00
		RL-All	58.63	33.04	18.95	11.31	0.89	2.78	24.70	41.37	31.65	0.40	3.57	2.48	1.59	1.69	0.00
		IL	56.75	52.08	30.16	19.15	0.60	2.78	4.07	43.25	21.33	0.40	12.00	3.97	2.98	0.69	1.88
ST	013	RL-Per	64.38	59.03	19.35	36.11	0.79	3.57	4.56	35.62	25.00	0.00	0.30	1.59	2.28	6.45	0.00
		RL-All	67.96	60.91	40.08	16.27	1.09	4.56	5.95	32.04	25.60	0.10	1.19	2.78	1.69	0.60	0.10
		IL	61.71	59.62	10.22	45.24	0.89	4.17	1.19	38.29	25.50	0.30	6.65	1.29	4.37	0.00	0.20
	024	RL-Per	69.44	66.47	30.95	24.21	0.30	11.31	2.68	30.56	25.10	0.00	0.40	1.88	2.68	0.20	0.30
		RL-All	67.26	60.12	29.96	10.81	0.10	19.35	7.04	32.74	25.10	0.00	2.28	3.08	1.98	0.00	0.30
		IL	65.67	64.68	21.03	37.10	0.40	6.55	0.60	34.33	18.65	0.10	8.83	2.68	3.97	0.00	0.10
	all	RL-Per	67.06	63.19	25.89	30.06	0.00	7.24	3.87	32.94	24.80	0.00	0.69	2.18	1.98	3.17	0.10
		RL-All	68.25	61.31	33.73	16.07	0.40	11.51	6.55	31.75	24.90	0.00	1.19	3.08	2.58	0.00	0.00
		IL	62.20	59.92	16.57	38.10	1.49	5.26	0.79	37.80	22.32	0.40	7.84	3.08	3.57	0.10	0.50



Table 10: Train split Open policy trajectory labeling on 1000 episodes per target articulation. All numbers are percentages. Best viewed zoomed.

TASK	OBJ	TYPE	SoR	SaeR	(i)	(ii)	(iii)	FR	(iv)	(v)	(vi)	(vii)	(viii)	(ix)
ST	drawer	RL-Per IL	84.92	84.92	84.92	0.00	0.00	15.08	11.41	1.69	0.00	1.49	0.20	0.30
			79.86	79.86	79.86	0.00	0.00	20.14	13.59	0.89	1.09	3.67	0.10	0.79
	fridge	RL-Per IL	83.43	82.24	82.24	0.00	1.19	16.57	14.58	0.20	0.00	1.49	0.20	0.10
			74.01	68.85	68.85	0.00	5.16	25.99	22.12	0.99	0.10	1.69	0.40	0.69

Table 11: Val split Open policy trajectory labeling on 1000 episodes per target articulation. All numbers are percentages. Best viewed zoomed.

TASK	OBJ	TYPE	SoR	SaeR	(i)	(ii)	(iii)	FR	(iv)	(v)	(vi)	(vii)	(viii)	(ix)
ST	drawer	RL-Per IL	84.52	84.52	84.52	0.00	0.00	15.48	11.41	1.88	0.00	1.88	0.00	0.30
			78.57	78.37	78.37	0.00	0.20	21.43	13.69	1.29	0.20	4.17	1.19	0.89
	fridge	RL-Per IL	88.10	37.30	37.30	0.00	50.79	11.90	6.94	0.00	0.00	4.07	0.89	0.00
			53.67	1.49	1.49	0.00	52.18	46.33	43.85	0.00	0.00	1.29	0.89	0.30

Table 12: Train split Close policy trajectory labeling on 1000 episodes per target articulation. All numbers are percentages. Best viewed zoomed.

TASK	OBJ	TYPE	SoR	SaeR	(i)	(ii)	(iii)	FR	(iv)	(v)	(vi)	(vii)	(viii)	(ix)
ST	drawer	RL-Per IL	88.79	88.79	88.79	0.00	0.00	11.21	3.17	2.68	0.30	0.89	4.17	0.00
			88.39	88.39	88.39	0.00	0.00	11.61	3.27	3.08	0.00	0.79	4.46	0.00
	fridge	RL-Per IL	86.81	25.00	25.00	0.00	61.81	13.19	13.19	0.00	0.00	0.00	0.00	0.00
			86.90	29.96	29.96	0.00	56.94	13.10	12.90	0.00	0.00	0.20	0.00	0.00

Table 13: Val split Close policy trajectory labeling on 1000 episodes per target articulation. All numbers are percentages. Best viewed zoomed.

TASK	OBJ	TYPE	SoR	SaeR	(i)	(ii)	(iii)	FR	(iv)	(v)	(vi)	(vii)	(viii)	(ix)
ST	drawer	RL-Per IL	89.29	89.29	89.29	0.00	0.00	10.71	4.56	2.18	0.20	0.20	3.37	0.20
			87.60	87.60	87.60	0.00	0.00	12.40	4.66	2.18	0.00	0.30	5.16	0.10
	fridge	RL-Per IL	0.00	0.00	0.00	0.00	0.00	100.00	81.15	18.85	0.00	0.00	0.00	0.00
			0.00	0.00	0.00	0.00	0.00	100.00	95.93	4.07	0.00	0.00	0.00	0.00