

Variational Causal Dynamics: Discovering Modular World Models from Interventions

Anson Lei
Applied AI Lab
University of Oxford

anson@robots.ox.ac.uk

Bernhard Schölkopf
MPI for Intelligent Systems
Tübingen

bs@tue.mpg.de

Ingmar Posner
Applied AI Lab
University of Oxford

ingmar@robots.ox.ac.uk

Reviewed on OpenReview: <https://openreview.net/forum?id=V9tQKYNK1>

Abstract

Latent world models allow agents to reason about complex environments with high-dimensional observations. However, adapting to new environments and effectively leveraging previous knowledge remain significant challenges. We present *variational causal dynamics* (VCD), a structured world model that exploits the invariance of causal mechanisms across environments to achieve fast and modular adaptation. By causally factorising a transition model, VCD is able to identify reusable components across different environments. This is achieved by combining causal discovery and variational inference to learn a latent representation and transition model jointly in an unsupervised manner. Specifically, we optimise the evidence lower bound jointly over a representation model and a transition model structured as a causal graphical model. In evaluations on simulated environments with state and image observations, we show that VCD is able to successfully identify causal variables, and to discover consistent causal structures across different environments. Moreover, given a small number of observations in a previously unseen, intervened environment, VCD is able to identify the sparse changes in the dynamics and to adapt efficiently. In doing so, VCD significantly extends the capabilities of the current state-of-the-art in latent world models while also comparing favourably in terms of prediction accuracy.

1 Introduction

The ability to adapt flexibly and efficiently to novel environments is one of the most distinctive and compelling features of the human mind. It has been suggested that humans do so by learning internal models which not only contain abstract representations of the world, but also encode generalisable, structural relationships within the environment (Behrens et al., 2018). This latter aspect, it is conjectured, is what allows humans to adapt efficiently and selectively. Recent efforts have been made to mimic this kind of representation in machine learning. *World models* (e.g. Ha & Schmidhuber, 2018) aim to capture the dynamics of an environment by distilling past experience into a parametric predictive model. Advances in latent variable models have enabled the learning of world models in a compact latent space (Ha & Schmidhuber, 2018; Watter et al., 2015; Hafner et al., 2018; Buesing et al., 2018; Zhang et al., 2019) from high-dimensional observations such as images. Whilst these models have enabled agents to act in complex environments via planning (e.g. Hafner et al., 2018; Sekar et al., 2020) or learning parametric policies (e.g. Hafner et al., 2019; Ha & Schmidhuber, 2018), structurally adapting to changes in the environment remains

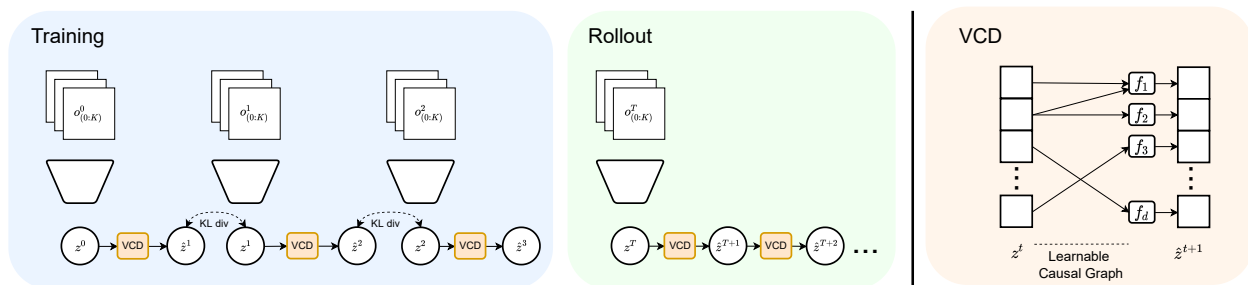


Figure 1: Left: The general architecture of VCD. The dynamics model is trained using observation sequences from multiple environments by minimising the KL divergence between the predicted state distribution and the encoded posterior state distribution. Rollouts in the latent space can be performed by recursively applying the learnt transition model. Right: The structure of the causal transition model. Each dimension of the latent space is treated as a causal variable. Predictions are made using only the causal parents of each variable, according to a *learnt* causal graph.

a significant challenge. The consequence of this limitation is particularly pronounced when deploying learning agents to environments, where distribution shifts occur. As such, we argue that it is beneficial to build structural world models that afford modular and efficient adaptation, and that *causal* modeling offers a tantalising prospect to discover such structure from observations.

Causality plays a central role in understanding distribution changes, which can be modelled as causal interventions (Schölkopf et al., 2021). The Sparse Mechanism Shift hypothesis (Schölkopf et al., 2021; Bengio et al., 2019) (SMS) states that naturally occurring shifts in the data distribution can be attributed to sparse and local changes in the generative process. This implies that many causal mechanisms remain *invariant* across domains (Schölkopf et al., 2012; Peters et al., 2016; Zhang et al., 2015). In this light, learning a *causal* model of the environment enables agents to reason about distribution shifts and to exploit the invariance of learnt mechanisms across different environments. Hence, we posit that world models with a causal structure can facilitate modular transfer of knowledge. To date, however, methods for causal discovery (Spirtes et al., 2000; Pearl, 2009; Peters et al., 2017; Brouillard et al., 2020; Ke et al., 2020) require access to abstract causal variables to learn causal models from data. These are not typically available in the context of world model learning, where we wish to operate directly on high-dimensional observations.

In order to benefit from the structure of causal models and the ability to represent high-dimensional observations, we propose *Variational Causal Dynamics* (VCD), which combines causal discovery with variational inference. Specifically, we train a latent state-space model with a structural transition model using variational inference and sparsity regularisation from causal discovery. By jointly learning a latent representation of the observations and a transition model, VCD learns a causally factorised world model that can modularly adapt to different environments.¹ The key intuition behind our approach is that, since sparse structures can only be discovered on semantically meaningful variables, training the representation and the causal discovery module in an end-to-end manner acts as an inductive bias that encourages well disentangled representations. By leveraging the learnt causal structure, VCD is able to identify the sparse mechanism changes in the environment and re-learn *only* the intervened mechanisms. This enables fast and modular adaptation to changes in dynamics. The code for the experiments are available at <https://github.com/applied-ai-lab/VCD>.

2 Related Work

Predictive models of the environment can be used to derive exploration- (Sekar et al., 2020) or reward-driven (Ha & Schmidhuber, 2018; Hafner et al., 2019; 2018) behaviours. In this paper, we focus on the learning of latent dynamics models. World models (Ha & Schmidhuber, 2018) train a representation encoder and a RNN-based transition model in a two-stage process. Other approaches (Hafner et al., 2018; Zhang et al.,

¹The assumption under which the model is valid is discussed in section 4.

2019; Watter et al., 2015) learn a generative model by jointly training the representation and the transition via variational inference. PlaNet (Hafner et al., 2018) parameterises the transition model with RNNs. E2C (Watter et al., 2015; Banijamali et al., 2018) and SOLAR (Zhang et al., 2019) use locally-linear transition models, arguing that including constraints in the dynamics model yields structured latent spaces that are suitable for control problems. In a similar vein, the use of latent prediction models have also been explored in the context of video prediction (Villegas et al., 2019; Denton & Fergus, 2018; Assouel et al., 2022). Our proposed approach shares the general principle that latent representations can be shaped by structured transition mechanisms (Ahuja et al., 2021). However, to the best of our knowledge, VCD is the first approach that implements a causal transition model given high-dimensional inputs in this context.

Causal discovery methods enable the learning of causal structure from data. Approaches can be categorised as constraint-based (e.g. (Spirtes et al., 2000)) and score-based (e.g. (Hauser & Bühlmann, 2012)). The reader is referred to (Peters et al., 2017) for a detailed review of causal discovery methods. Motivated by the fact that these methods require access to abstract causal variables, recent efforts have been made to reconcile machine learning, which has the ability to operate on low-level data, and causality (Schölkopf et al., 2021). Recent advances in this area include theoretical works on independent component analysis exploring the conditions under which disentanglement is possible (Yao et al., 2022; Hyvarinen et al., 2019; Lachapelle et al., 2021). Our current work situates within this broader context of causal representation learning, and aims to identify causally meaningful representations via the discovery of causal transition dynamics. (Lachapelle et al., 2021; Lachapelle & Lacoste-Julien, 2022) discusses the theoretical identifiability of a latent state-space model similar to ours. Whilst we do not make identifiability claims, our work builds on the inductive biases developed in these works. Building on this theoretical foundation, VCD focuses on the adaptation capabilities of causal models and empirically shows their applicability to image observations.

There has been significant interest in leveraging causal reasoning in world model learning (Li et al., 2020a;b). These approaches typically rely on predefined representations such as keypoints (Li et al., 2020b) or object slots (Li et al., 2020a), and attribute changes in the dynamics to unobserved confounders, which can be estimated from observations. Our approach differs in that we couple the learning of the representation and the model, which enables dynamics-aware discovery of causal representations. Similar approaches of jointly learning representation and model structure have also been explored in different contexts such as reinforcement learning. AdaRL (Huang et al., 2022) considers few-shot adaptation under sparse mechanism shift (SMS) by attributing changes in the environments to low-dimensional environment-specific parameters. In contrast, by explicitly drawing from causal discovery, VCD models the dynamics of the scene as independent causal mechanisms. This, in turn, allows our approach to directly identify localised mechanism shifts between environments in an interpretable manner. Another branch of work considers temporally intervened sequences (Lippe et al., 2022b; 2023; Brehmer et al., 2022). While these share our general approach of learning sparse graphs in the latent space, they consider interventions as direct changes to the causal variables in each time step, whereas VCD formulates interventions as shifts in the dynamics across environments, which enables the capability of domain adaptation. In the model-free RL literature, Raileanu et al. (2020); Sang et al. (2022) investigate a similar setting where agents are trained in diverse environments and adapt to new environments with limited data.

Another branch of causality-inspired work leverages the invariance of causal mechanisms by learning invariant predictors across environments (Tian & Pearl, 2001; Schölkopf et al., 2012; Peters et al., 2016; Zhang et al., 2017; Arjovsky et al., 2019). This invariance has been studied in the context of state abstractions in MDPs (Zhang et al., 2020), and invariant policies can be learnt via imitation learning from different environments (Bica et al., 2021). In contrast, our approach models the full generative process of the data across different environments rather than learning discriminative predictors.

3 Background

This section describes the prerequisite definitions and formulations for our proposed method. We highlight the strengths and weaknesses of latent state-space models, causal models and causal discovery methods, and motivate our approach that builds upon these to learn causal world models.

Latent state-space models In a complex environment with high-dimensional observations, such as images, learning a compact latent state space that captures the dynamics of the environment has been shown to be more computationally efficient than learning predictions directly in the observation space (Hafner et al., 2018; Buesing et al., 2018). Given a dataset of sequences $\{(o^{0:T}, a_i^{0:T})\}_{i=0}^N$ ², with observations o^t and actions a^t at discrete timesteps t , a generative model of the observations can be defined using latent states $z^{0:T}$ as

$$p(o^{0:T}, a^{0:T}) = \int \prod_{t=0}^T p_\theta(o^t|z^t)p(a^t|z^t)p_\theta(z^t|z^{t-1}, a^{t-1})dz^{0:T}, \quad (1)$$

where $p_\theta(o^t|z^t)$ and $p_\theta(z^t|z^{t-1}, a^{t-1})$ are the observation model and the transition model respectively. For simplicity, we do not learn the policy term $p(a^t|z^t)$ and omit it throughout this paper as it is constant with respect to the parameter θ . The variational evidence lower bound can be written as

$$\text{ELBO}(\theta, \phi) = \sum_{t=0}^T \mathbb{E}_{q_\phi(z^t|o^t)} [\log(p_\theta(o^t|z^t))] - \mathbb{E}_{q_\phi(z^{t-1}|o^{t-1})} [\text{KL}[q_\phi(z^t|o^t)||p_\theta(z^t|z^{t-1}, a^{t-1})]], \quad (2)$$

where $q_\phi(z^t|o^t)$ is a learnable approximate posterior of the observations.³ See Appendix A for the derivation. RSSM (Hafner et al., 2018) employs a flexible transition model parameterised as a fully connected recurrent neural network, where the transition probability is split into a stochastic part and a deterministic recurrent part,

$$z^t \sim p_\theta(z^t|h^t), \quad h^t = f_\theta(h^{t-1}, z^{t-1}, a^{t-1}), \quad (3)$$

where $f(\cdot)$ is instantiated as a GRU (Cho et al., 2014) and h^t is the associated hidden state. Intuitively, this provides a path through which information can be passed on over multiple timesteps.

Despite their success, these models cannot reason about changes in the environment. Specifically, they are unable to structurally utilise prior knowledge learnt from different environments under distribution shift. To this end, we argue that imposing a *causal* structure on the transition model equips the learning agent with the ability to adapt to changes in a modular and efficient manner.

Causal graphical models A causal graphical model (CGM) (Peters et al., 2017) is defined as a set of random variables $\{X_1, \dots, X_d\}$, their joint distribution P_X , and a directed acyclic graph (DAG), $\mathcal{G} = (X, E)$, where each edge $(i, j) \in E$ implies that X_i is a direct cause of X_j . The joint distribution admits a causal factorisation such that

$$p(x_1, \dots, x_d) = \prod_{i=0}^d p(x_i|PA_i), \quad (4)$$

where PA_i is the set of parents to the variable X_i in the graph. Each of the conditional distributions can be considered as an independent *causal mechanism*.

In contrast to standard graphical models, CGMs support the notion of *interventions*, i.e., local changes in the causal distribution. Formally, an intervention on the variable X_i is modelled as replacing the conditional distribution $p(x_i|PA_i)$ while leaving the other mechanisms unchanged. Given the set of intervention targets $I \subset X$, the interventional distribution can be written as

$$p'(x_1, \dots, x_d) = \prod_{i \notin I} p(x_i|PA_i) \prod_{i \in I} p'(x_i|PA_i), \quad (5)$$

where $p'(\cdot|\cdot)$ is the new conditional distribution corresponding to the intervention. The SMS hypothesis (Schölkopf et al., 2021) posits that naturally occurring distribution shifts tend to correspond to sparse changes

²In the current work, we focus on environments without rewards. However, the proposed method can be readily extended to include reward prediction.

³The approximate posterior, which only depends on the current observation, is a simplification of the full posterior which is conditioned on all observations. This is consistent with prior works and is found to be sufficient for the dynamical systems in the experiment. However, the algorithm presented in this work can be readily adapted to use the full posterior instead.

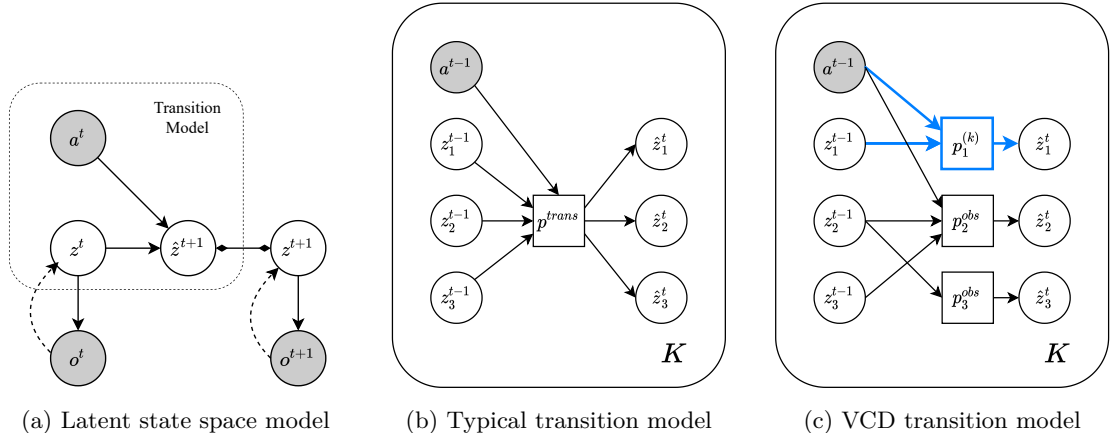


Figure 2: (a) The structure of latent state space models in one timestep. Solid lines denote the generative process of the environment, dashed lines denote approximate posteriors, shaded nodes denote observed variables, and the bi-directional arrow denotes the KL divergence in the ELBO term. In this work, we propose a novel architecture for the transition model. (b) The structure of latent transition models where the probability distribution is modelled as a fully connected neural network. (c) The causal transition model in VCD. Each individual variable has a separate conditional distribution p_i . Each mechanism is conditioned on a subset of the previous state and action. The blue lines highlight the intervened mechanism which is specific to the environment k , as opposed to the mechanisms corresponding to the black lines, which are shared across environments.

in a causal model when factorized as (4), i.e., changes of a few mechanisms only. Causal mechanisms thus tend to be *invariant* across environments (Schölkopf et al., 2012; Peters et al., 2016; Zhang et al., 2017). In this light, we argue that a *causal* world model can structurally leverage the invariance within distribution shifts as an inductive prior. In order to learn a causal model in the context of world models, we draw inspiration from recent advances in causal discovery which aim to learn causal structures from data.

Differentiable causal discovery We focus on methods that formulate causal discovery as a continuous optimisation problem (Brouillard et al., 2020; Ke et al., 2020; Bengio et al., 2019; Lippe et al., 2022a) as these can be naturally incorporated into the variational inference framework. Furthermore, since the causal variables are *learned* in our model, the causal discovery module is required to learn causal graphs from unknown intervention targets. In this work, we follow the formulation in Differentiable Causal Discovery with Interventional data (Brouillard et al., 2020) (DCDI), which optimises a continuously parameterised probabilistic belief over graph structures and intervention targets. See Appendix B for further detail.

In the context of learning world models from high-dimensional observations, the drawback of this approach, and of causal discovery methods in general, is that it requires access to semantically meaningful causal variables, much like classical AI required symbols in terms of which algorithms could be formulated. In the next section, we present a method to perform causal discovery and learn causally meaningful representations jointly.

4 Variational Causal Dynamics

Similar to causal discovery with interventional data, variational causal dynamics (VCD) learns from action-observation sequences from an undisturbed environment, $(o_{(0)}^{0:T}, a_{(0)}^{0:T})$, and K intervened environments, $\{(o_{(k)}^{0:T}, a_{(k)}^{0:T})\}_{k=1}^K$. Throughout this paper, we assume that 1) changes between the environments are due to ‘soft’ interventions where the structure of the causal graphs remains the same but individual parameters of the mechanisms change, 2) there are no instantaneous causal dependencies in each timestep, and 3) the observation function does not change across environments.

The general approach of VCD follows the latent state-space model framework (Fig.2a), where a latent representation of the observations is jointly learnt with a transition model by maximising the ELBO. In contrast to existing approaches that parameterise the transition probability $p(z^t|z^{t-1}, a^{t-1})$ as a feedforward neural network (Fig.2b), VCD learns a *structured* transition model by utilising inductive biases from causal discovery. Importantly, our approach is grounded in the hypothesis that causal structures can only be discovered on meaningfully disentangled representations of the system. We therefore argue that training a representation and a transition model jointly to optimise a causal discovery objective can lead to a latent representation that affords sparse transition models and is therefore semantically meaningful. We discuss this approach in relation to existing theoretical works on identifiability in Section 4.5. Taking the view that changes in the dynamics can be attributed to sparse causal interventions, we posit that a causally factorised transition model facilitates modular adaptation to new environments by explicitly leveraging the invariance of causal mechanisms. We propose an algorithm for adaptation in Section 4.4.

4.1 Causal transition model

In order to perform causal discovery on the transition dynamics, the transition model in VCD is designed to mimic the structure of a CGM (Eq. 5). In the following paragraphs, we motivate and describe the three main architectural features of VCD that enable causal discovery: *independent mechanisms*, *sparse causal dependencies* and *sparse interventions*. Access to the causal graph \mathcal{G} and the intervention targets for each environment \mathcal{I}_k is assumed throughout this subsection. We describe the method of learning these jointly with the model in Section 4.3.

Independent mechanisms In contrast to a fully-connected transition model, the transition probability is factorised into individual conditional distribution as

$$p(z^t|z^{t-1}, a^{t-1}) = \prod_i^d p_i(z_i^t|z^{t-1}, a^{t-1}), \quad (6)$$

where d is the dimension of the latent space, to be set as a hyperparameter. z_i denotes the i th dimension of the latent state, and each conditional distribution p_i is a one-dimensional normal distribution with mean and variance given by *separate* neural networks. This factorisation and separation of parameters is motivated by the Independent Causal Mechanism principle, which states that the causal generative process of a system’s variables is composed of autonomous modules that do not inform or influence each other (Schölkopf et al., 2021). This explicit modularity of the model structure enables the notion of interventions, where individual conditional distributions are locally changed without affecting the other mechanisms.

Sparse causal dependencies Following the structure of a CGM, we condition each variable only on its causal parents according to the learnable causal graph \mathcal{G} , rather than the full state. Given a graph \mathcal{G} , we define the binary adjacency mask $M^{\mathcal{G}}$ where the entry $M_{ij}^{\mathcal{G}}$ is 1 if and only if $[z^{t-1}, a^{t-1}]_i$ is a causal parent of z_j^t . This is consistent with the intuition that, in physical systems, states interact with each other in a sparse manner (Goyal et al., 2021a), and actions tend to have a direct effect on only a subset of the states. Under this parameterisation, the causal transition probability can be written as

$$p(z^t|z^{t-1}, a^{t-1}) = \prod_i^d p_i(z_i^t|M_i^{\mathcal{G}} \odot [z^{t-1}, a^{t-1}]), \quad (7)$$

where \odot denotes the element-wise product, $[\cdot, \cdot]$ denotes the concatenation of vectors, and $M_i^{\mathcal{G}}$ is the binary mask that selects only the causal parents of z_i under the graph \mathcal{G} .

Sparse interventions Following the SMS hypothesis (Schölkopf et al., 2021), we assume that changes in distributions across the K intervened environments are due to sparse interventions in the ground truth causal generative process. In order to incorporate sparse interventions in VCD, given the set of learnt intervention targets \mathcal{I}_k for each environment, we define the binary intervention mask $R^{\mathcal{I}}$ where the entry $R_{ki}^{\mathcal{I}}$ is 1 if and only if the variable z_i is in the set of intervention targets in environment k . For each variable z_i , $R_{ki}^{\mathcal{I}}$ acts

as a switch between reusing a shared observational model and an environment-specific interventional model. The full interventional causal model of the transition probability in the environment k can be written as

$$p^k(z^t|z^{t-1}, a^{t-1}) = \prod_i^d p_i^{(0)}(z_i^t|M_i^{\mathcal{G}} \odot [z^{t-1}, a^{t-1}])^{1-R_{ki}^{\mathcal{I}}} p_i^{(k)}(z_i^t|M_i^{\mathcal{G}} \odot [z^{t-1}, a^{t-1}])^{R_{ki}^{\mathcal{I}}}, \quad (8)$$

where $p^{(0)}$ is the observational mechanism that is shared across all environments and $p^{(k)}$ is the intervened distribution specific to environment k . Intuitively, this model ensures that all environments reuse the same conditional distributions p^{obs} unless it is deemed that a particular mechanism has been intervened on (i.e. $R_{ki}^{\mathcal{I}} = 1$). This modular adaptation between environments facilitates structural transfer of knowledge between different environments. Note that the structure is that of a causal graphical model. The overall architecture of the VCD transition model is summarised in Fig. 2c.

4.2 Recurrent module

Similar to RSSM (Hafner et al., 2018), we augment the model with a deterministic recurrent path to enable long-term predictions. To ensure that each conditional distribution only has access to the causal parents, in the same way that each conditional distribution is modelled by a separate network, each conditional distribution keeps a separate recurrent unit and a corresponding hidden activation:

$$z_i^t \sim p_i(z_i^t|h_i^t), \quad h_i^t = f_i(h_i^{t-1}, M_i^{\mathcal{G}} \odot [z_i^{t-1}, a_i^{t-1}]), \quad (9)$$

where f_i is a recurrent module specific to the variable z_i , instantiated as a GRU (Cho et al., 2014).

4.3 Training

The task of model training is to determine the model parameters θ , the approximate posterior parameters ϕ , as well as the causal graph \mathcal{G} and the intervention targets \mathcal{I} . These can be jointly trained in a way similar to DCDI. We parameterise the belief over the causal adjacency matrix $M^{\mathcal{G}}$ as a random binary matrix. Each entry $M_{ij}^{\mathcal{G}}$ follows a Bernoulli distribution with success probability $\sigma(\alpha_{ij})$, where α_{ij} is a scalar parameter and $\sigma(\cdot)$ is the sigmoid function. Similarly, a random binary matrix $R^{\mathcal{I}}$ is parameterised using the scalar variable β_{ki} for each entry. Unlike DCDI, due to the existence of latent variables, we cannot directly maximise the data likelihood. Instead, we maximise the expected ELBO across all environments over causal graphs and intervention masks,

$$L(\theta, \phi, \alpha, \beta) = \sum_{k \in [0, 1, \dots, K]} \mathbb{E}_{\mathcal{G}, \mathcal{I}} [\text{ELBO}(o_{(k)}^{0:T}, a_{(k)}^{0:T}; \theta, \phi, \mathcal{G}, \mathcal{I}) - \lambda_G |\mathcal{G}| - \lambda_I |\mathcal{I}|], \quad (10)$$

where

$$\begin{aligned} \text{ELBO}(o_{(k)}^{0:T}, a_{(k)}^{0:T}; \theta, \phi, \mathcal{G}, \mathcal{I}) &= \sum_{t=0}^T \mathbb{E}_{q_{\phi}(z^t|o^t)} [p_{\theta}(o^t|z^t)] \\ &\quad - \mathbb{E}_{q_{\phi}(z^{t-1}|o^{t-1})} [\text{KL}[q_{\phi}(z^t|o^t) || p_{\theta}^{(k)}(z^t|z^{t-1}, a^{t-1})]]. \end{aligned} \quad (11)$$

$p_{\theta}^{(k)}(z^t|z^{t-1}, a^{t-1})$ is further factorised as in Equation (8). The gradients through the outer expectation and the expectation term in ELBO are estimated using the straight-through Gumbel-max trick (Jang et al., 2017) and the reparameterisation trick (Kingma & Welling, 2014) respectively. For further implementation details, derivation of the lower bound, and model architectures, see Appendices A and B.

4.4 Adaptation

Due to the modular nature of the transition model, VCD can naturally adapt to new, unseen environments by jointly inferring the intervention targets and the new model parameters for the intervened mechanisms. Specifically, the transition model in a new environment can be written as

$$p^{new}(z^t|z^{t-1}, a^{t-1}) = \prod_i p_i^{(0)}(z_i^t|M_i^{\mathcal{G}} \odot [z^{t-1}, a^{t-1}])^{1-R_i^t} p_i^t(z_i^t|M_i^{\mathcal{G}} \odot [z^{t-1}, a^{t-1}])^{R_i^t}, \quad (12)$$

where R' is the intervention mask for the new environment and p'_i is the environment-specific distribution. The parameters of $p_i^{(0)}$ are carried over from the training environments, meaning that the model reuses trained mechanisms unless the variable is intervened on in the new environment. Under the SMS hypothesis, only a small subset of the mechanisms need to be adapted in a new environment. As such, by leveraging past experience, VCD can adapt more quickly to environment change.

One way to implement modular transfer is to train VCD on trajectories in the new environment while reusing the trained parameters for the causal graph and the mechanisms in the undisturbed environment. This can be done by identifying the set of intervention targets in the new environment I' and learning the model parameters for the corresponding conditional distributions θ' . These can be jointly trained in an analogous way to Eq. 10,

$$L^{adapt}(\theta', \beta') = \mathbb{E}_{\mathcal{G}, \mathcal{I}'} [\text{ELBO}(o_{0:T}^{new}, a_{0:T}^{new}; \theta', \phi, \mathcal{G}, \mathcal{I}') - \lambda_I |\mathcal{I}'|], \quad (13)$$

where β' are the Bernoulli parameters for the distribution over intervention targets. Under this framework, VCD has the capability to identify the sparse mechanism changes in a new environment and learn the transition mechanisms only for the intervened variables. In Section 5, we show that VCD can identify sparse interventions from a small amount of data and is able to refit the world model with improved data efficiency.

4.5 Identifiability of Causal Graph and Causal Representations

VCD's ability to adapt in a modular fashion hinges on the discovery of the correct, or at least approximately correct, causal structure as well as on a causally meaningful representation space. The conditions under which such structures can be learnt from data are studied under the term *identifiability*. While we make no formal claims about identifiability of causal graph and representation in the paper, our approach is grounded in recent theoretical results which makes use of the sparsity of causal relationships (Brouillard et al., 2020; Lachapelle et al., 2021). In this subsection, we foreground the relationship between these results and our approach.

(Brouillard et al., 2020) shows how the correct casual graph can be identified in a setting similar to ours. Given observed causal variables X in k different environments with intervention targets \mathcal{I}^* and ground-truth casual graph \mathcal{G}^* , the following score function is proposed,

$$\mathcal{S}(\mathcal{G}, \mathcal{I}) := \sup_{\phi} \sum_{k=1}^K \mathbb{E}_X p^{(k)} \log f^{(k)}(X; \mathcal{G}, \mathcal{I}, \phi) - \lambda_{\mathcal{G}} |\mathcal{G}| - \lambda_{\mathcal{I}} |\mathcal{I}|, \quad (14)$$

where $f^{(k)}$ is the likelihood of the data under the model in environment k , parameterised by ϕ , and other definitions are the same as eq.10. The main theoretical results in (Brouillard et al., 2020) shows that with small enough $\lambda_{\mathcal{G}}$ and $\lambda_{\mathcal{I}}$, maximising this score function will result in the correct intervention targets and a causal graph that is \mathcal{I}^* -markov equivalent to the ground-truth graph. In other words, with a suitable choice of hyperparameters, maximising the score function will lead to the correct causal graph and intervention targets. The main idea of this theorem is that if the model learns the underlying distribution perfectly, any learnt graph that is not equivalent to the ground-truth graph is necessarily less sparse and hence have a lower score. VCD uses the same score function as the training objective with the log likelihood replaced with the evidence log lower bound since we do not have access to the causal variables.

To this end, (Lachapelle et al., 2021) considers the identifiability of causal variables from high dimensional observations, i.e. whether an encoder can learn latent representations that correspond to causally meaningful variables. Given a dataset of observation-action sequences, $\{o^t, a^t\}_{t=0}^T$ generated by the transition model:

$$o^t = \mathbf{f}(z^t), \quad z^t = \prod_i p(z_i^t | z^{<t}, a^{<t}), \quad (15)$$

$$p(z_i^t | z^{<t}, a^{<t}) = h_i(z_i^t) \exp\{\mathbf{T}_i(z_i^t)^T \boldsymbol{\lambda}_i (G_i^z \odot z^{<t}, G_i^a \odot a^{<t}) - \psi_i(z^{<t}, a^{<t})\}, \quad (16)$$

where \mathbf{f} is an invertible function that maps the latent causal variables to high dimensional observations. The theory holds conditional distributions within the exponential family, where \mathbf{T} is the sufficient statistics, $\boldsymbol{\lambda}$ is a transition function that outputs the natural parameters of the distribution, h and ψ are the base measure and the normalising constant respectively. G^z and G^a are the binary masks corresponding to the causal graph of the observed system, analogous to the learnt causal masks for VCD. In this framework, the learnable parameters are $\theta := (\mathbf{f}, \boldsymbol{\lambda}, G)$. The main theorem states that, if the distribution induced by the learnt model $\hat{\theta}$ matches the ground-truth model θ , then under certain technical conditions concerning the structure of the problem, $\|\hat{G}\|_0 \leq \|G\|_0$ implies that θ and $\hat{\theta}$ are equivalent up to permutations. In other words, if the learnt model perfectly captures the data distribution with a causal graph that is at least as sparse as the ground-truth causal graph, then the learnt causal variables must be completely disentangled. The intuition behind this theorem can be demonstrated with a simple example. Consider a system with a transition model that only depends on one causal variable. With an entangled representation, i.e. information about the causal variable is spread across several latent dimensions, the model must take into account all of these latent dimensions in order to make predictions. As such, the model will require multiple edges in the learnt causal graph. In contrast, only one edge is needed if the representation is disentangled.

In sum, these results show that sparsity plays a central role in the identification of both the causal graph and a causal representation. With this in mind, the architecture of VCD is designed to afford a sparse transition model that mimics the structure of a CGM. Whilst, in practice, the condition of perfectly matched distributions might not hold, this general principle of sparsity regularisation forms the basis of our approach. In section 5, we empirically show that VCD is able to learn a disentangled latent representation and identify most of the causal relationships.

5 Experiments

In this section, we demonstrate that VCD is able to learn from multiple environments with different dynamics by learning a causal world model that explicitly captures the changes between the environments as interventions. We evaluate, qualitatively and quantitatively, the learnt representations and causal structures and show that VCD is able to capture the dynamics of the scene using sparse dependencies between states, as well as identify sparse changes between the environments. Moreover, we illustrate that, in an unseen environment, VCD can leverage past experience to perform modular adaptation, resulting in significantly improved data efficiency over the baselines.

Dataset We evaluate VCD on a simulated dataset of a 2-D multi-body system which contains four particles that affect each other via a spring or an electrostatic-like force. The configuration of the environment is shown in Fig.3. The action $a \in \mathbb{R}^2$ is an external force that applies to particle 4. The environment is designed such that there is an unambiguous ground-truth causal graph between the causal variables and well-defined changes in the dynamics. We consider changes such as strengthening or removing one of the springs, increasing or decreasing the mass of a particle, or constraining the position of a particle along the x or the y axis. Each of these changes can be considered as an intervention on one or more causal variables. See Appendix C for further details of the environment and the full list of interventions. We evaluate VCD in two experiments: **Mixed-state**, where the observation is given by applying an affine transformation to the ground-truth positions of the particles, and **Image**, where the observation is given by rendering the environment as a RGB image.

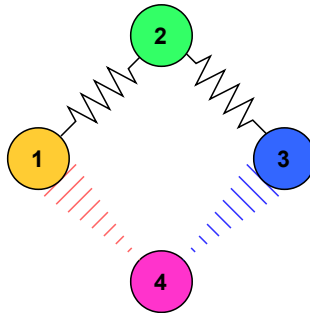


Figure 3: The configuration of the multi-body environment. The red and the blue lines represent an attractive and repulsive force respectively.

Baselines We compare the performance of VCD against RSSM (Hafner et al., 2018), a state-of-the-art latent world model that served as inspiration for VCD. As RSSM does not support learning from multiple environments, we consider two adaptations of RSSM with different levels of knowledge transfer between

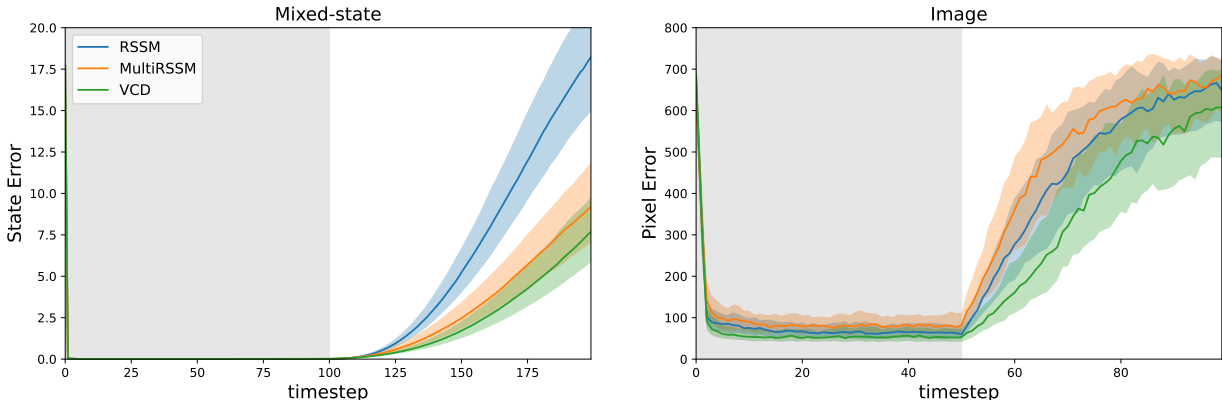


Figure 4: The rollout error measured on validation trajectories. The models receive observations on each timestep for the first half of each trajectory (shaded), after which the model is rolled out based on latent predictions. The reported error in the mixed-state environment (left) and the image environment (right) are squared error in the ground-truth state space and squared error in pixel values respectively. VCD outperforms the baselines in both modes of observation. Evaluations on the image experiments using non-pixel-based errors are available in Appendix F.

Table 1: The modified MCC scores for RSSM and VCD. Higher score means better disentanglement.

Experiment	RSSM	VCD
Mixed-state	0.728	0.975
Image	0.715	0.908

environments: (1) **RSSM**, where one transition model is trained over all environments, i.e., maximum parameter sharing across environments; and (2) **MultiRSSM**, where individual transition models are trained on each environment, with shared encoders and decoders. This corresponds to the case where no knowledge about dynamics is transferred, i.e., each model is a local expert. Compared to these two extremes of knowledge sharing, VCD captures environment-specific behaviours whilst reusing invariant mechanisms.

Prediction performance VCD and the baselines are trained on a dataset composed of 2000 trajectories from each of the undisturbed environment and five intervened environments. The models are evaluated on trajectories from a validation set drawn from the training environments. Fig. 4 shows the rollout error for each of the models with state and image observations. Unlike VCD and MultiRSSM, RSSM can only capture the average dynamics of the environments due to parameter sharing. As such, it is not able to capture environment-specific behaviours. This is reflected in the prediction accuracy of the model. In the mixed-state experiment, VCD is able to identify changes between the environments and performs as well as MultiRSSM in terms of prediction error. A similar trend is shown in the image space, where VCD outperforms the baselines. See Appendix D for image rollout examples that demonstrate the difference in behaviour between RSSM and VCD.

Causal discovery and Disentanglement One of the key hypotheses of this work is that jointly learning a representation and a transition model using causal discovery leads to causally meaningful representations. Here we examine the quality of the learnt latent space and the causal structure of the transition model. Fig. 5 shows the image reconstructions of points drawn from a straight line along dimension 6 of the latent space. Since both models are initialised with the same encoder, this provides a qualitative intuition as to how the causal discovery inductive bias shapes the latent space. Whilst this dimension of the latent space in RSSM is able to encode only the blue particle, VCD is able to learn an *axis-aligned* coordinate (x coordinate) of the blue particle with respect to the environment. Note that the motion of bouncing off the boundaries is only separable in the x, y frame, implying that the dynamics in axis-aligned coordinates is sparser. In table 1, we

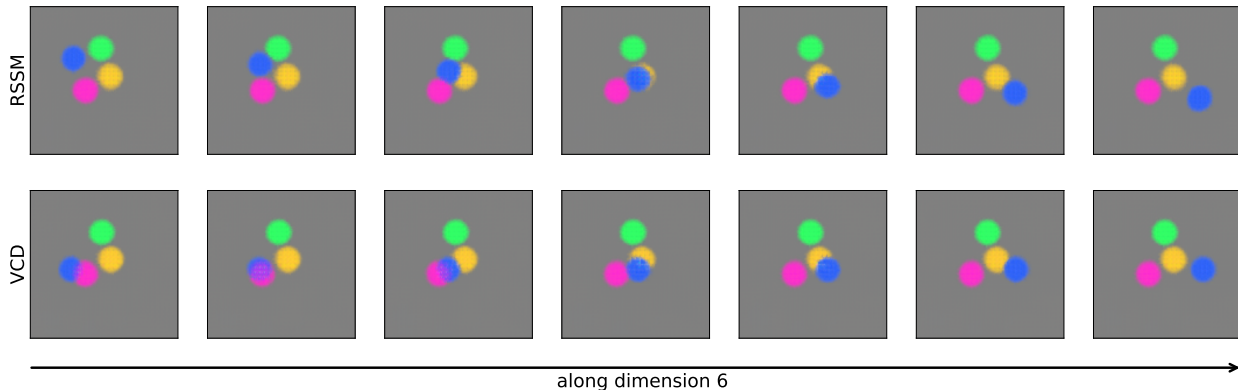


Figure 5: Reconstructed images from points sampled along dimension 6 of the latent space. Compared to the latent space learnt in RSSM, VCD is able to learn an axis-aligned representation where the blue particle moves horizontally. See Appendix D for more examples.

Table 2: Sparsity of learnt causal graphs and intervention targets. We compare the learnt graph with the ground truth causal graph by mapping each ground-truth state dimension to a latent dimension by picking the dimension with the highest correlation score.

Observation		# of edges	Correct Edges	Missed Edges	False Positives
Mixed state	causal graph	42/288	19	7	8
	intervention targets	18/80	10	0	5
Image	causal graph	73/288	22	4	13
	intervention targets	31/80	10	0	17

provide the mean absolute correlation coefficient score⁴ for the representations for both RSSM and VCD, which measures the quality of representation disentanglement by comparing the learnt latent space with the ground-truth states. We see that in both cases, training with the sparsity regularisation in VCD achieves a higher MCC score, which confirms that VCD learns a more disentangled representation. More qualitative exploration of the learnt latent space is provided in Appendix D.

By considering the correlation between each dimension of the learnt representation and the ground-truth states, it is possible to compare the learnt causal graph with the ground-truth (table 2). As desired, the learnt causal graphs in both the mixed-state and the image environment are found to be sparse and encode most of the causal edges of the graph. Taken together with the prediction accuracy of the model, this means that VCD is able to retain causal edges that are important for predicting the dynamics of the environment while pruning out spurious edges. A more in-depth analysis of the learnt causal graph is provided in Appendix D showing that the edges in the learnt causal graph do correspond to meaningful causal relationships.

Adaptation We provide empirical evidence that VCD can adapt to a new environment with less data compared to RSSM and MultiRSSM by reusing learnt mechanisms in a modular fashion. We collect datasets of different sizes in a previously unseen intervened environment where particle 1 is constrained horizontally. RSSM and MultiRSSM adapt to the new environment by optimizing the ELBO (Eq. 2), with the difference that MultiRSSM instantiates a new transition model randomly and RSSM initialises the transition model using pre-trained parameters. Following Eq. 13, VCD performs adaptation by jointly estimating the intervention targets and the parameters of the intervened mechanisms. The models are evaluated on a validation set of trajectories in the new environment. Fig. 6 shows the rollout error of the models trained on datasets

⁴Due to the fact that the ground-truth state dimension (8) is less than the latent state dimension (16), we modify the MCC score by calculating the mean of the top 8 scores out of the 16, effectively ignoring the latent variables that do not capture the state information.

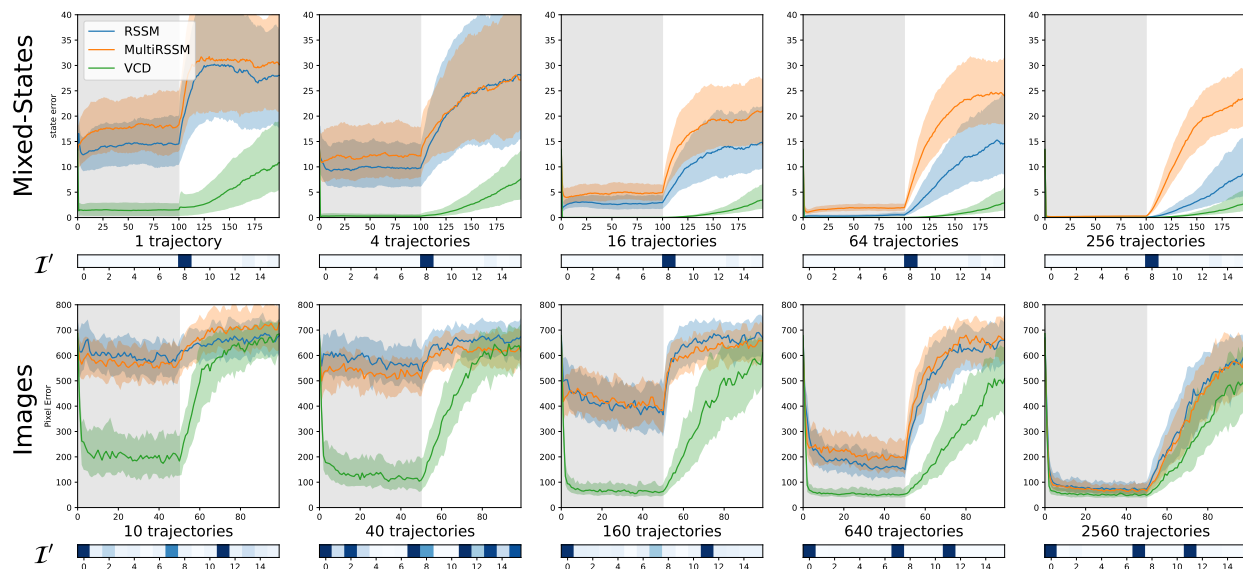


Figure 6: Rollout errors in the mixed-state and image experiments where the models are trained on datasets of varying sizes. The models receive observations for the first half of the trajectory (shaded), and perform latent space prediction for the rest. VCD significantly outperforms the other models with little data. The bar below each plot shows the learnt intervention targets in the new environment. VCD is able to reuse most of the previously learnt mechanisms, as indicated by the sparsity in the learnt intervention targets. In the mixed-state, we verify that the learnt intervention target (dimension 8) corresponds to the ground-truth target (y_1), see Appendix D. Evaluations using non-pixel-based errors are available in Appendix F.

of varying size. Across all models, performance improves as the dataset grows. However, in contrast to RSSM and MultiRSSM, which overfits the dataset when the number of trajectories is small, VCD is able to predict significantly more accurately. This is because VCD estimates the intervention targets and reuses trained modules that remain invariant. Remarkably, in the mixed-state experiment, VCD is able to converge to a single latent dimension that encodes the y position of particle 1 with just one training trajectory. See Appendix E for more experiments with different interventions.

6 Conclusion and discussion

In this paper, we propose VCD, a predictive world model with a causal structure that is able to consume high-dimensional observations. This is achieved by jointly training a representation and a causally structured transition model using a modified causal discovery objective. In doing so, VCD is able to identify causally meaningful representations of the observations and discover sparse relationships in the dynamics of the system. By leveraging the invariance of causal mechanisms, VCD is able to adapt to new environments efficiently by identifying relevant mechanism changes and updating in a modular way, resulting in significantly improved data efficiency.

Limitations and future directions Our experiments highlight VCD’s ability to discover causal variables and mechanisms from image observations. Future work should investigate the efficacy of the proposed method in more challenging environments such as (Baradel et al., 2019; Ahmed et al., 2021). One possible drawback of the proposed framework is that the causal graph is assumed to be static across all timesteps and all environments. In more complex environments, it could be more difficult for the model to discover temporally sparse interactions such as collisions, and adapt to scenes with different numbers of objects. As such, exciting directions for future research also include exploring the synergy between causal world models and object-centric generative models (Wu et al., 2021; Engelcke et al., 2021; von Kügelgen et al., 2020), temporally-local

causal influence detection (Seitzer et al., 2021; Pitis et al., 2020) and relational reasoning (Goyal et al., 2021b; Kipf et al., 2019).

Broader Impact Statement

While the present work significantly advances the current state-of-the-art in world-modelling and causal representation learning, we expect its immediate impact outside of the machine learning community to be low as current methods can not yet deal effectively with real-world scenarios.

Acknowledgments

This research was supported by an EPSRC Programme Grant (EP/V000748/1). The authors would like to acknowledge the use of the University of Oxford Advanced Research Computing (ARC) facility in carrying out this work. <http://dx.doi.org/10.5281/zenodo.22558>. The authors thank Ceri Ngai, Jack Collins, Oiwi Parker Jones, Frederik Nolte and Jun Yamada for useful comments.

References

- Ossama Ahmed, Frederik Träuble, Anirudh Goyal, Alexander Neitz, Manuel Wüthrich, Yoshua Bengio, Bernhard Schölkopf, and Stefan Bauer. Causalworld: A robotic manipulation benchmark for causal structure and transfer learning. In *International Conference on Learning Representations*, 2021.
- K. Ahuja, J. Hartford, and Y. Bengio. Properties from mechanisms: An equivariance perspective on identifiable representation learning. *arXiv preprint arXiv:2110.15796*, 2021.
- M. Arjovsky, L. Bottou, I. Gulrajani, and D. Lopez-Paz. Invariant risk minimization. *arXiv preprint arXiv:1907.02893*, 2019.
- Rim Assouel, Lluís Castrejon, Aaron Courville, Nicolas Ballas, and Yoshua Bengio. Vim: Variational independent modules for video prediction. In *Conference on Causal Learning and Reasoning*, pp. 70–89. PMLR, 2022.
- E. Banijamali, R. Shu, H. Bui, A. Ghodsi, et al. Robust locally-linear controllable embedding. In *International Conference on Artificial Intelligence and Statistics*, pp. 1751–1759. PMLR, 2018.
- Fabien Baradel, Natalia Neverova, Julien Mille, Greg Mori, and Christian Wolf. Cophy: Counterfactual learning of physical dynamics. *arXiv preprint arXiv:1909.12000*, 2019.
- T. Behrens, T. Muller, J. Whittington, S. Mark, A. Baram, K. Stachenfeld, and Z. Kurth-Nelson. What is a cognitive map? organizing knowledge for flexible behavior. *Neuron*, 100(2):490–509, 2018. ISSN 0896-6273. doi: <https://doi.org/10.1016/j.neuron.2018.10.002>. URL <https://www.sciencedirect.com/science/article/pii/S0896627318308560>.
- Y. Bengio, T. Deleu, N. Rahaman, R. Ke, S. Lachapelle, O. Bilaniuk, A. Goyal, and C. Pal. A meta-transfer objective for learning to disentangle causal mechanisms, 2019. URL [arXiv:1901.10912](https://arxiv.org/abs/1901.10912).
- I. Bica, D. Jarrett, and M. van der Schaar. Invariant causal imitation learning for generalizable policies. *Advances in Neural Information Processing Systems*, 34, 2021.
- Johann Brehmer, Pim De Haan, Phillip Lippe, and Taco Cohen. Weakly supervised causal representation learning. In *ICLR2022 Workshop on the Elements of Reasoning: Objects, Structure and Causality*, 2022. URL <https://openreview.net/forum?id=rUXOUBuUcg5>.
- P. Brouillard, S. Lachapelle, A. Lacoste, S. Lacoste-Julien, and A. Drouin. Differentiable causal discovery from interventional data. In H. Larochelle, M. Ranzato, R. Hadsell, M.F. Balcan, and H. Lin (eds.), *Advances in Neural Information Processing Systems*, volume 33, pp. 21865–21877. Curran Associates, Inc., 2020. URL <https://proceedings.neurips.cc/paper/2020/file/f8b7aa3a0d349d9562b424160ad18612-Paper.pdf>.

- L. Buesing, T. Weber, S. Racanière, S. M. Ali Eslami, D. Rezende, D. Reichert, F. Viola, F. Besse, K. Gregor, D. Hassabis, and D. Wierstra. Learning and querying fast generative models for reinforcement learning. *ArXiv*, abs/1802.03006, 2018.
- K. Cho, B. van Merriënboer, C. Gulcehre, F. Bougares, H. Schwenk, and Y. Bengio. Learning phrase representations using rnn encoder-decoder for statistical machine translation. In *Conference on Empirical Methods in Natural Language Processing (EMNLP 2014)*, 2014.
- Emily Denton and Rob Fergus. Stochastic video generation with a learned prior. In *International conference on machine learning*, pp. 1174–1183. PMLR, 2018.
- M. Engelcke, O. Parker Jones, and I. Posner. Genesis-v2: Inferring unordered object representations without iterative refinement. In M. Ranzato, A. Beygelzimer, Y. Dauphin, P.S. Liang, and J. Wortman Vaughan (eds.), *Advances in Neural Information Processing Systems*, volume 34, pp. 8085–8094. Curran Associates, Inc., 2021. URL <https://proceedings.neurips.cc/paper/2021/file/43ec517d68b6edd3015b3edc9a11367b-Paper.pdf>.
- A. Goyal, A. Lamb, J. Hoffmann, S. Sodhani, S. Levine, Y. Bengio, and B. Schölkopf. Recurrent independent mechanisms. In *9th International Conference on Learning Representations (ICLR)*, May 2021a. URL <https://openreview.net/pdf?id=mLcmdlEUxy->.
- Anirudh Goyal, Aniket Didolkar, Nan Rosemary Ke, Charles Blundell, Philippe Beaudoin, Nicolas Heess, Michael C Mozer, and Yoshua Bengio. Neural production systems. *Advances in Neural Information Processing Systems*, 34:25673–25687, 2021b.
- D. Ha and J. Schmidhuber. Recurrent world models facilitate policy evolution. In *Advances in Neural Information Processing Systems 31*, pp. 2451–2463. Curran Associates, Inc., 2018. URL <https://papers.nips.cc/paper/7512-recurrent-world-models-facilitate-policy-evolution>. <https://worldmodels.github.io>.
- D. Hafner, T. Lillicrap, J. Ba, and M. Norouzi. Dream to control: Learning behaviors by latent imagination. *arXiv preprint arXiv:1912.01603*, 2019.
- Danijar Hafner, Timothy Lillicrap, Ian Fischer, Ruben Villegas, David Ha, Honglak Lee, and James Davidson. Learning latent dynamics for planning from pixels. *arXiv preprint arXiv:1811.04551*, 2018.
- A. Hauser and P. Bühlmann. Characterization and greedy learning of interventional Markov equivalence classes of directed acyclic graphs. *Journal of Machine Learning Research*, 13:2409–2464, 2012.
- Biwei Huang, Fan Feng, Chaochao Lu, Sara Magliacane, and Kun Zhang. AdaRL: What, where, and how to adapt in transfer reinforcement learning. In *International Conference on Learning Representations*, 2022. URL <https://openreview.net/forum?id=8H5bpVwvt5>.
- Aapo Hyvarinen, Hiroaki Sasaki, and Richard Turner. Nonlinear ica using auxiliary variables and generalized contrastive learning. In *The 22nd International Conference on Artificial Intelligence and Statistics*, pp. 859–868. PMLR, 2019.
- E. Jang, S. Gu, and B. Poole. Categorical reparameterization with gumbel-softmax. In *5th International Conference on Learning Representations, ICLR 2017, Toulon, France, April 24-26, 2017, Conference Track Proceedings*, 2017. URL <https://openreview.net/forum?id=rkE3y85ee>.
- R. Ke, O. Bilaniuk, A. Goyal, S. Bauer, H. Larochelle, B. Schölkopf, M. C. Mozer, C. Pal, and Y. Bengio. Learning neural causal models from unknown interventions, 2020. *arXiv:1910.01075v2*.
- D. Kingma and M. Welling. Auto-encoding variational bayes. In *2nd International Conference on Learning Representations, ICLR*, 2014. URL <http://arxiv.org/abs/1312.6114>.
- Diederik P Kingma and Jimmy Ba. Adam: A method for stochastic optimization. *arXiv preprint arXiv:1412.6980*, 2014.

- Thomas Kipf, Elise van der Pol, and Max Welling. Contrastive learning of structured world models. *arXiv preprint arXiv:1911.12247*, 2019.
- S. Lachapelle, P. López, Y. Sharma, K. Everett, R. Le Priol, A. Lacoste, and S. Lacoste-Julien. Disentanglement via mechanism sparsity regularization: A new principle for nonlinear ica, 2021. URL <https://arxiv.org/abs/2107.10098>.
- Sebastien Lachapelle and Simon Lacoste-Julien. Partial disentanglement via mechanism sparsity. In *UAI 2022 Workshop on Causal Representation Learning*, 2022. URL https://openreview.net/forum?id=Sa_53fqtUWF.
- Minne Li, Mengyue Yang, Furui Liu, Xu Chen, Zhitang Chen, and Jun Wang. Causal world models by unsupervised deconfounding of physical dynamics. *arXiv preprint arXiv:2012.14228*, 2020a.
- Yunzhu Li, Antonio Torralba, Anima Anandkumar, Dieter Fox, and Animesh Garg. Causal discovery in physical systems from videos. *Advances in Neural Information Processing Systems*, 33:9180–9192, 2020b.
- Phillip Lippe, Taco Cohen, and Efstratios Gavves. Efficient neural causal discovery without acyclicity constraints. In *International Conference on Learning Representations*, 2022a. URL <https://openreview.net/forum?id=eYciPrLuUhG>.
- Phillip Lippe, Sara Magliacane, Sindy Löwe, Yuki M Asano, Taco Cohen, and Stratis Gavves. Citris: Causal identifiability from temporal intervened sequences. In *International Conference on Machine Learning*, pp. 13557–13603. PMLR, 2022b.
- Phillip Lippe, Sara Magliacane, Sindy Löwe, Yuki M Asano, Taco Cohen, and Efstratios Gavves. Causal representation learning for instantaneous and temporal effects in interactive systems. In *The Eleventh International Conference on Learning Representations*, 2023. URL <https://openreview.net/forum?id=itZ6ggvMnzS>.
- J. Pearl. *Causality: Models, Reasoning, and Inference*. Cambridge University Press, New York, NY, 2nd edition, 2009.
- J. Peters, P. Bühlmann, and N. Meinshausen. Causal inference using invariant prediction: identification and confidence intervals. *Journal of the Royal Statistical Society, Series B: Statistical Methodology (with discussion)*, 78(5):947–1012, 2016.
- J. Peters, D. Janzing, and B. Schölkopf. *Elements of Causal Inference - Foundations and Learning Algorithms*. MIT Press, Cambridge, MA, USA, 2017.
- Silviu Pitis, Elliot Creager, and Animesh Garg. Counterfactual data augmentation using locally factored dynamics. *Advances in Neural Information Processing Systems*, 33:3976–3990, 2020.
- Roberta Raileanu, Max Goldstein, Arthur Szlam, and Facebook Rob Fergus. Fast adaptation to new environments via policy-dynamics value functions. In *Proceedings of Machine Learning and Systems 2020*, pp. 7078–7089. 2020.
- Tong Sang, Hongyao Tang, Yi Ma, Jianye Hao, Yan Zheng, Zhaopeng Meng, Boyan Li, and Zhen Wang. Pandr: Fast adaptation to new environments from offline experiences via decoupling policy and environment representations, 2022.
- B. Schölkopf, D. Janzing, J. Peters, E. Sgouritsa, K. Zhang, and J. Mooij. On causal and anticausal learning. In J. Langford and J. Pineau (eds.), *Proceedings of the 29th International Conference on Machine Learning (ICML)*, pp. 1255–1262, New York, NY, USA, 2012. Omnipress. URL <http://icml.cc/2012/papers/625.pdf>.
- B. Schölkopf, F. Locatello, S. Bauer, N. R. Ke, N. Kalchbrenner, A. Goyal, and Y. Bengio. Toward causal representation learning. *Proceedings of the IEEE - Advances in Machine Learning and Deep Neural Networks*, 109(5):612–634, 2021. doi: 10.1109/JPROC.2021.3058954. URL <https://ieeexplore.ieee.org/stamp/stamp.jsp?arnumber=9363924>.

- Maximilian Seitzer, Bernhard Schölkopf, and Georg Martius. Causal influence detection for improving efficiency in reinforcement learning. *Advances in Neural Information Processing Systems*, 34:22905–22918, 2021.
- R. Sekar, O. Rybkin, K. Daniilidis, P. Abbeel, D. Hafner, and D. Pathak. Planning to explore via self-supervised world models. In *ICML*, 2020.
- P. Spirtes, C. Glymour, and R. Scheines. *Causation, Prediction, and Search*. MIT Press, Cambridge, MA, 2nd edition, 2000.
- J. Tian and J. Pearl. Causal discovery from changes. In *Proceedings of the 17th Annual Conference on Uncertainty in Artificial Intelligence (UAI)*, pp. 512–522, 2001.
- Ruben Villegas, Arkanath Pathak, Harini Kannan, Dumitru Erhan, Quoc V Le, and Honglak Lee. High fidelity video prediction with large stochastic recurrent neural networks. *Advances in Neural Information Processing Systems*, 32, 2019.
- J. von Kügelgen, I. Ustyuhanin, P. Gehler, M. Bethge, and B. Schölkopf. Towards causal generative scene models via competition of experts. *arXiv preprint arXiv:2004.12906*, 2020.
- M. Watter, J. Springenberg, J. Boedecker, and M. Riedmiller. Embed to control: A locally linear latent dynamics model for control from raw images. In C. Cortes, N. Lawrence, D. Lee, M. Sugiyama, and R. Garnett (eds.), *Advances in Neural Information Processing Systems*, volume 28. Curran Associates, Inc., 2015. URL <https://proceedings.neurips.cc/paper/2015/file/a1afc58c6ca9540d057299ec3016d726-Paper.pdf>.
- Y. Wu, O. Parker Jones, M. Engelcke, and I. Posner. Apex: Unsupervised, object-centric scene segmentation and tracking for robot manipulation. In *IEEE/RSJ International Conference on Intelligent Robots and Systems (IROS)*, 2021.
- Weiran Yao, Yuewen Sun, Alex Ho, Changyin Sun, and Kun Zhang. Learning temporally causal latent processes from general temporal data. In *International Conference on Learning Representations*, 2022. URL <https://openreview.net/forum?id=RD1LMjLJXdq>.
- A. Zhang, C. Lyle, S. Sodhani, A. Filos, M. Kwiatkowska, J. Pineau, Y. Gal, and D. Precup. Invariant causal prediction for block mdps. In *International Conference on Machine Learning*, pp. 11214–11224. PMLR, 2020.
- K. Zhang, M. Gong, and B. Schölkopf. Multi-source domain adaptation: A causal view. In *Proceedings of the 29th AAAI Conference on Artificial Intelligence*, pp. 3150–3157, 2015.
- K. Zhang, B. Huang, J. Zhang, C. Glymour, and B. Schölkopf. Causal discovery from nonstationary/heterogeneous data: Skeleton estimation and orientation determination. In *Proceedings of the Twenty-Sixth International Joint Conference on Artificial Intelligence (IJCAI 2017)*, pp. 1347–1353, 2017.
- M. Zhang, S. Vikram, L. Smith, P. Abbeel, M. Johnson, and S. Levine. Solar: Deep structured representations for model-based reinforcement learning. In *International Conference on Machine Learning*, pp. 7444–7453. PMLR, 2019.

A Derivations

Using the approximate posterior $q(z^{0:T}|o^{0:T}, a^{0:T}) = \prod_t q(z^t|o^t)$, the variational log lower bound for the latent state-space model (Eq. 2) can be derived from importance weighting and Jensen’s inequality:

$$\log p(o^{0:T}, a^{0:T}) = \log \int \prod_{t=0}^T p(o^t|z^t)p(a^t|z^t)p(z^t|z^{t-1}, a^{t-1})dz^{0:T} \quad (17)$$

$$= \log \int \prod_0^T p(o^t|z^t)p(a^t|z^t) \frac{p(z^t|z^{t-1}, a^{t-1})}{q(z^t|o^t)} q(z^t|o^t) dz^{0:T} \quad (18)$$

$$\geq \mathbb{E}_{\prod q(z^t|o^t)} \left[\log \left(\prod_0^T p(o^t|z^t)p(a^t|z^t) \frac{p(z^t|z^{t-1}, a^{t-1})}{q(z^t|o^t)} \right) \right] \quad (19)$$

$$= \sum_0^T \mathbb{E}_{q(z^t|o^t)} [\log p(o^t|z^t) + \log p(a^t|z^t)] \\ + \mathbb{E}_{q(z^{t-1}|o^{t-1})} [\mathbb{E}_{q(z^t|o^t)} [\log p(z^t|z^{t-1}, a^{t-1}) - \log q(z^t|o^t)]] \quad (20)$$

$$= \sum_0^T \mathbb{E}_{q(z^t|o^t)} [\log p(o^t|z^t) + \log p(a^t|z^t)] \\ - \mathbb{E}_{q(z^{t-1}|o^{t-1})} [\mathbb{KL} [q(z^t|o^t)||p(z^t|z^{t-1}, a^{t-1})]]]. \quad (21)$$

Since the policy $p(a^t|z^t)$ is constant with respect to the model parameters, we omit this term and write the ELBO objective as

$$\text{ELBO}(\theta, \phi) = \sum_{t=0}^T \mathbb{E}_{q_\phi(z^t|o^t)} [\log p_\theta(o^t|z^t)] - \mathbb{E}_{q_\phi(z^{t-1}|o^{t-1})} [\mathbb{KL}[q_\phi(z^t|o^t)||p_\theta(z^t|z^{t-1}, a^{t-1})]], \quad (22)$$

where θ is the model parameter and ϕ is the parameter for the approximate posterior. θ and ϕ are omitted henceforth to simplify notation. In VCD, the KL divergence term can be further decomposed by exploiting the structure of the transition model (Eq. 8), and the assumption that variables within each timestep are independent:

$$\mathbb{KL} [q(z^t|o^t)||p^{(k)}(z^t|z^{t-1}, a^{t-1})] \quad (23)$$

$$= - \int \log \left(\frac{p^{(k)}(z^t|z^{t-1}, a^{t-1})}{q(z^t|o^t)} \right) q(z^t|o^t) dz^t \quad (24)$$

$$= - \sum_{i=0}^d \int \log \left(\frac{p_i^{(0)}(z_i^t|M_i^G \odot [z^{t-1}, a^{t-1}])^{1-R_{ki}^Z} p_i^{(k)}(z_i^t|M_i^G \odot [z^{t-1}, a^{t-1}])^{R_{ki}^Z}}{q(z_i^t|o^t)} \right) q(z_i^t|o^t) dz_i^t \quad (25)$$

$$= - \sum_0^d \left((1 - R_{ki}^Z) \int \log \left(\frac{p_i^{(0)}(z_i^t|M_i^G \odot [z^{t-1}, a^{t-1}])}{q(z_i^t|o^t)} \right) q(z_i^t|o^t) dz_i^t \right. \\ \left. + R_{ki}^Z \int \log \left(\frac{p_i^{(k)}(z_i^t|M_i^G \odot [z^{t-1}, a^{t-1}])}{q(z_i^t|o^t)} \right) q(z_i^t|o^t) dz_i^t \right) \quad (26)$$

$$= - \sum_0^d \left((1 - R_{ki}^Z) \mathbb{KL} [q(z_i^t|o^t)||p_i^{(0)}(z_i^t|M_i^G \odot [z^{t-1}, a^{t-1}])] \right. \\ \left. + R_{ki}^Z \mathbb{KL} [q(z_i^t|o^t)||p_i^{(k)}(z_i^t|M_i^G \odot [z^{t-1}, a^{t-1}])] \right). \quad (27)$$

The KL terms can be computed analytically since the conditional distributions in the last expression are univariate Gaussian distributions. In training time, the gradients through the expectation terms in the ELBO is estimated by drawing a sample from the posterior distribution using the reparameterisation trick (Kingma & Welling, 2014).

B Implementation Detail

B.1 DCDI and Graph Learning

This section covers the formulation of DCDI (Brouillard et al., 2020) and the graph learning method. These are subsequently used in the learning of VCD.

Given samples from an observed data distribution $P_X^{(0)}$ and K intervened distributions $P_X^{(k)}$, DCDI optimises a probabilistic belief over causal graphs \mathcal{G} and intervention targets \mathcal{I} . Specifically, these are encoded as random binary matrices, $M_{\mathcal{G}}$ and $R_{\mathcal{I}}$, where $M_{ij}^{\mathcal{G}} = 1$ implies that the edge (i, j) is in the causal graph, and $R_{ki}^{\mathcal{I}} = 1$ implies that the variable x_i is in the intervention targets in environment k . Each entry in $M^{\mathcal{G}}$ follows an independent Bernoulli distribution, parameterised by matrix α where $P(M_{ij}^{\mathcal{G}} = 1) = \sigma(\alpha_{ij})$. $R_{ki}^{\mathcal{I}}$ is similarly parameterised by β . Under this parameterisation, causal discovery can be formulated as maximising the expected data log likelihood with sparsity regularisation,

$$L(\theta, \alpha, \beta) = \mathbb{E}_{\alpha, \beta} \left[\sum_{k=0}^K \log[p_{\theta}^{(k)}(x_1^k, \dots, x_d^k; \mathcal{G}, \mathcal{I})] - \lambda_G |\mathcal{G}| - \lambda_I |\mathcal{I}| \right], \quad (28)$$

where $p^{(k)}$ is the data likelihood under causal graph \mathcal{G} and intervention targets \mathcal{I} in the k th environment, as factorised in eq.(5). The conditional distributions are parameterised as feedforward neural networks with parameter θ ; $\lambda_{G, I}$ are hyperparameters to control sparsity. In the original DCDI framework, this is also subject to an acyclicity constraint. However, this is not necessary in the context of our work as we assume there are no instantaneous causal effects (i.e., within a timestep).

The training objective for VCD can be viewed as a modified version of the DCDI objective, where the likelihood term is replaced with the ELBO (Eq. 22),

$$L^{VCD}(\theta, \phi, \alpha, \beta) = \mathbb{E}_{\alpha, \beta} \left[\sum_{k=0}^K \sum_{t=0}^T \text{ELBO}(\theta, \phi; \mathcal{G}, \mathcal{I}) - \lambda_G |\mathcal{G}| - \lambda_I |\mathcal{I}| \right], \quad (29)$$

Note that the expected number of edges in \mathcal{G} and \mathcal{I} given α and β is simply the sum of the probability of each entry being one. Therefore, the training objective can be computed as:

$$L^{VCD}(\theta, \phi, \alpha, \beta) = \mathbb{E}_{\alpha, \beta} \left[\sum_{k=0}^K \sum_{t=0}^T \text{ELBO}(\theta, \phi; \mathcal{G}, \mathcal{I}) \right] - \lambda_G \sum_{ij} \sigma(\alpha_{ij}) - \lambda_I \sum_{ki} \sigma(\beta_{ki}). \quad (30)$$

The gradients through the outer expectation can be estimated using the Gumbel-Softmax trick (Jang et al., 2017). To implement this, the ELBO term is evaluated with a sample of the causal graph using the following expression for each entry,

$$M_{ij}^{\mathcal{G}} = \mathbb{I}(\sigma(\alpha_{ij} + L_{ij}) > 0.5) + \sigma(\alpha_{ij} + L_{ij}) - \text{stop_gradient}(\sigma(\alpha_{ij} + L_{ij})), \quad (31)$$

where $\mathbb{I}(\cdot)$ is the indicator function, L_{ij} is a sample from the logistic distribution, and *stop_gradient* is a function that does not change the value of the argument but sets the gradient to zero. Samples for the intervention targets are similarly acquired. Note that the sample is used throughout each trajectory, i.e. the same sample graph and intervention targets are used for all of T timesteps.

B.2 Model Architecture

Mixed-state In the mixed-state experiment, all conditional distributions (including encoders, decoders and transition models) are parameterised by feedforward MLPs with two hidden layers of 64 hidden units each. The recurrent modules are implemented as GRUs (Cho et al., 2014) with 64 hidden units. Distributions in the latent space are 16-dimensional diagonal Gaussian distributions with predicted mean and log variance.

Table 3: List of interventions

ID	Intervention	Intervention targets
1	Remove spring between 1 and 2	x_1, y_1, x_2, y_2
2	Remove spring between 2 and 3	x_2, y_2, x_3, y_3
3	Increase mass 1	x_1, y_1, x_4, y_4
4	Increase mass 2	x_2, y_2
5	Increase mass 3	x_3, y_3, x_4, y_4
6	Decrease mass 1	x_1, y_1, x_4, y_4
7	Decrease mass 2	x_2, y_2
8	Decrease mass 3	x_3, y_3, x_4, y_4
9	Increase spring constant between 1 and 2	x_1, y_1, x_2, y_2
10	Increase spring constant between 2 and 3	x_2, y_2, x_3, y_3
11	Constrain movement of 1 to vertical only	x_1
12	Constrain movement of 1 to horizontal only	y_1
13	Constrain movement of 2 to vertical only	x_2
14	Constrain movement of 2 to horizontal only	y_2
15	Constrain movement of 3 to vertical only	x_3
16	Constrain movement of 3 to horizontal only	y_3
17	Constrain movement of 4 to vertical only	x_4
18	Constrain movement of 4 to horizontal only	y_4

Image In the image experiment, the encoders and decoders are parameterised as convolutional and deconvolutional networks from (Ha & Schmidhuber, 2018). In the RSSM models, the transition models are parameterised as feedforward MLPs with two hidden layers of 300 hidden units. The recurrent module is a GRU with 300 hidden units. In VCD, to compensate for the fact each dimension in the latent space has a separate model, the number of hidden units in the GRU and MLP are reduced to 32 to avoid over-parameterisation. We found that initialising the encoders and decoders by pretraining them as a variational autoencoder helped with training stability for both RSSM and VCD.

In both experiments, the training objective is maximised using the ADAM optimiser (Kingma & Ba, 2014) with learning rate 10^{-3} for mixed-state, and 10^{-4} for images. In both environments, we clip the log variance to -3 , with a batch size of two trajectories from each of six environments with $T = 50$. In VCD, the hyperparameters λ_G, λ_T are both set to 0.01. All models are trained on a single Nvidia Tesla V100 GPU.

C Experiment Detail

Interventions The ground truth states of the multi-body dynamics environment is the x and y coordinates of each particle. The full list of possible interventions on the environment is provided in Table 3. Note that the forces between particle 1, 3 and 4 are proportional to their masses. Hence intervening on the mass of particle 1 and 3 also affect the dynamics of particle 4. In the experiments, all models are trained in the undisturbed environment and intervened environments 1, 5, 11, 14, 17.

In the mixed-state experiment, the observation function is a mixing matrix where each entry is drawn from a unit Gaussian distribution. In the image experiment, the observation is given by rendering the system to a $128 \times 128 \times 3$ image. In both experiments, the models are trained on a training set of 2000 trajectories from each of the six environments and evaluated on a validation set of 400 unseen trajectories.

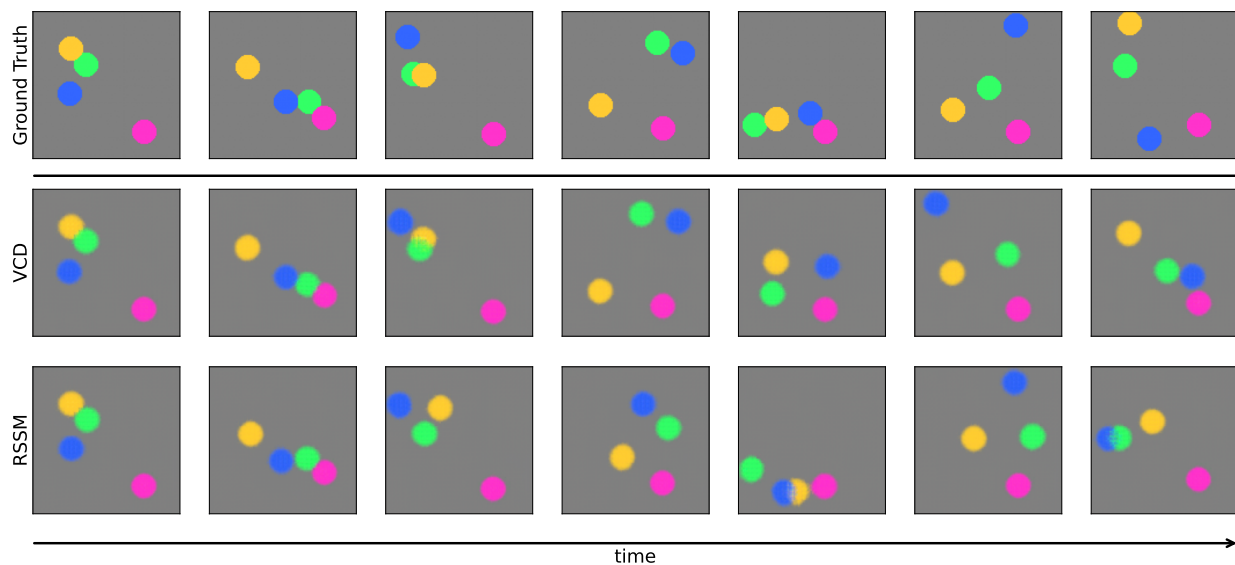


Figure 7: Sample rollouts (without observations) from an intervened environment. VCD successfully captures the constraint on the yellow particle (vertical movement only) over a long time horizon. The frames are sampled 5 timesteps apart from each other.

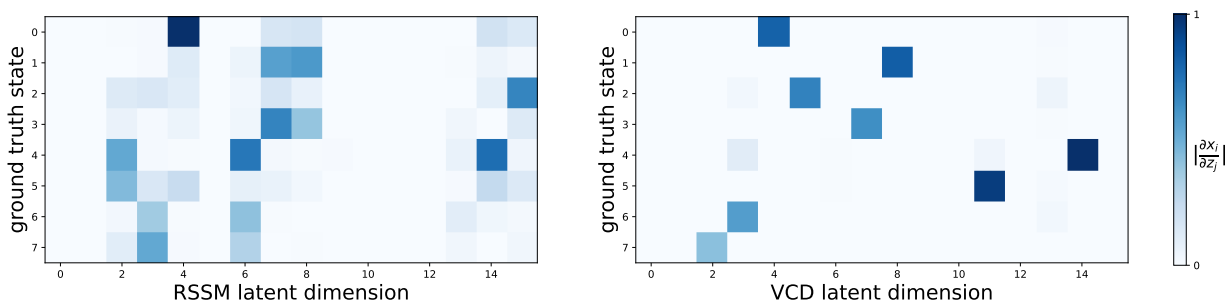


Figure 8: The average magnitude of the derivative of the ground-truth states x_i w.r.t. the learnt latent states z_j . VCD is able to learn a latent representation where each dimension captures information about one state only, i.e. only one state variable changes when we perturb the latent representation along one dimension. On the other hand, the RSSM latent space encodes state information in a more entangled manner, i.e. multiple ground-truth states are affected when the latent representation is perturbed in one dimension.

D Qualitative Exploration for Learnt Causal Structure

D.1 Rollout prediction

Section 5 shows the rollout accuracy of the baselines and VCD. Here we demonstrate qualitatively that VCD is able to capture environment-specific behaviours that RSSM cannot learn due to maximal parameter sharing. Figure 7 shows sample rollouts in the image space from RSSM and VCD in intervened environment 11, i.e. the yellow particle is constrained horizontally and only moves vertically. The yellow particle in the VCD rollout stays along a vertical line whereas RSSM fails to capture this environment-specific constraint.

D.2 Representation quality

Mixed-state Since the observation mixing function is linear and invertable in the mixed-state environment, we can directly access the level of disentanglement of the latent space with respect to the ground-truth state

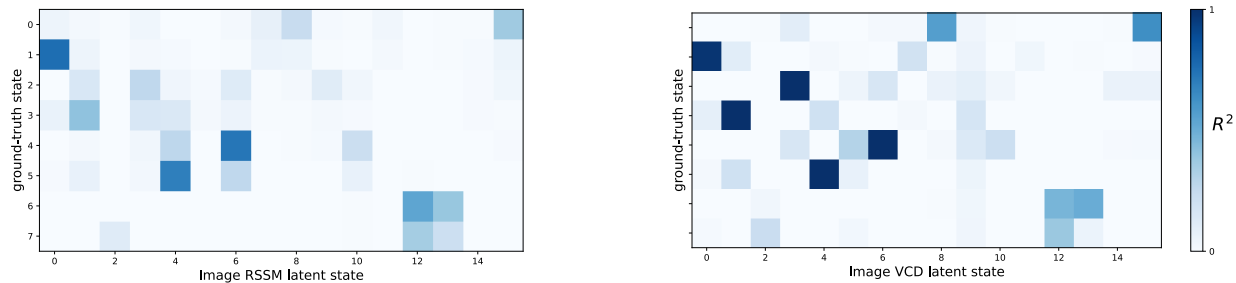


Figure 9: The R^2 of a linear regression between the ground-truth states and the learnt latent variables. This shows a similar pattern as the mixed-state experiments where the VCD representation in general only capture information about one ground-truth state.

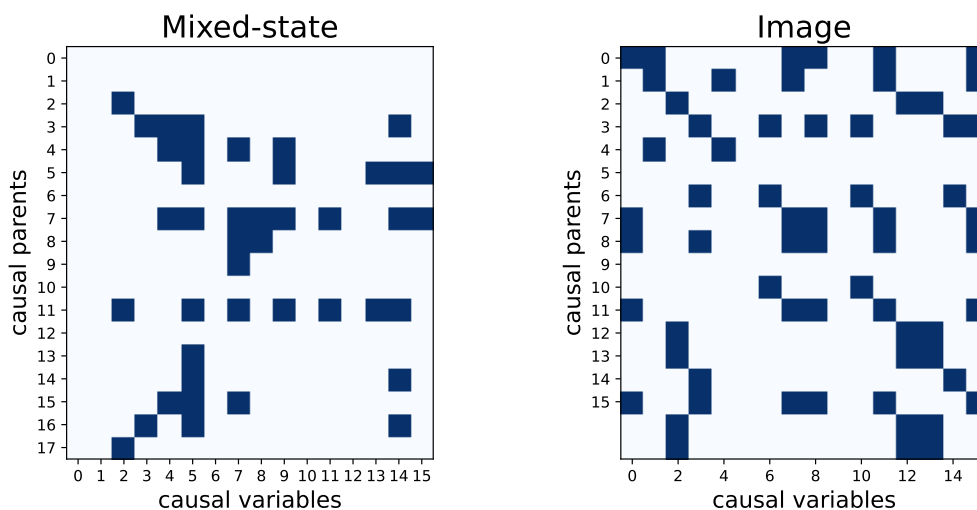


Figure 10: The learnt causal graphs for the mixed-state and image experiments, obtained by binarising the learnt edge probabilities such that a blue square at (i, j) implies $\sigma(\alpha_{ij}) > 0.5$, i.e. i is a causal parent of j .

of the environment, i.e. the x and y coordinate of the particles. Fig. 8 shows the average magnitude of the entries of the Jacobian matrix between the ground-truth state and the learnt latent state. Each entry measures the changes in each ground-truth state variable when the latent representation is perturbed along each dimension. By using the discovery of causal transition models as an inductive bias, VCD is able to learn a disentangled representation where each ground-truth state is captured by only one latent dimension. In contrast, RSSM learns a representation that is not sparse.

Image The quality of the learnt representation is discussed in Section 5. Here we show reconstruction samples along all dimensions of the latent space in the RSSM and VCD representation. Note that since both encoders are initialised from the same pretrained VAE, the difference in the latent space arise because of the causal discovery objective in VCD. Fig. 13 shows the changes in the reconstruction when the RSSM representation is perturbed in each dimension of the latent space. Fig. 12 shows the same for VCD. As discussed in the main text, VCD learns a *axis-aligned* representation that affords a sparse causal graph. For example, dimension 1 and 3 captures the y and x coordinates of the green particle respectively. In contrast, RSSM learns a representation that is not axis-aligned. Fig. 9 plots the R^2 linear regression scores between the learnt latent variables and the ground-truth variables, showing that the VCD representation can in general disentangle individual states, as indicated by the more salient squares.

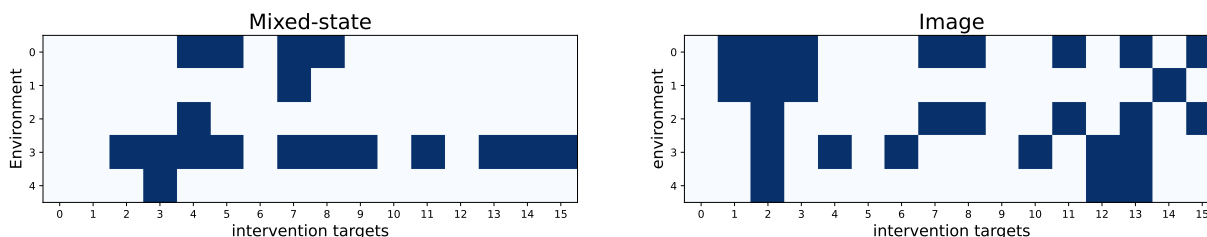


Figure 11: The learnt intervention targets for the mixed-state and image experiments, obtained by binarising the learnt probabilities such that a blue square at (k, i) implies $\sigma(\beta_{ki}) > 0.5$, i.e. i is an intervention target in environment k .

D.3 Learnt causal graphs and intervention targets

In this subsection, we explore the quality of the learnt causal graph and intervention targets. Fig. 10 shows the learnt causal graphs for the mixed-state and image experiments. Fig. 11 shows the learnt intervention targets for each environment. The sparsity of the learnt graph and targets is summarised in Table 2. VCD has identified 42 and 73 causal edges in the mixed-state and image experiments respectively, out of 288 possible edges. Viewed in conjunction with the prediction performance results, this shows that VCD is able to learn a world model that is sparsely connected and affords modular parameter sharing *without* compromising on prediction accuracy.

Mixed-state In the mixed-state experiments, each ground-truth state can be mapped to a latent dimension using the average magnitude Jacobian matrix (Fig. 8). We use this mapping to compare the learnt causal graph with the ground truth causal structure of the environment and report the number of correctly identified edges. Table 2 summarises the quality of the learnt graph. VCD is able to identify a majority of the correct causal dependencies and *all* of the intervention targets. Upon further inspection of the learnt causal graph, we find that all of the seven missed edges correspond to the $1/||\delta\mathbf{x}||^2$ terms that scale the electrostatic-like forces. We hypothesise that the model cannot capture these dependencies as they are not as significant as the other forces.

Image In the image space, a similar comparison is made using the R^2 scores. Each ground-truth state is mapped to a latent dimension by choosing the dimension with the highest R^2 score. This leaves unused latent states, which are ignored in the analysis provided in Table 2. We also qualitatively explore the learnt causal relationships. Focusing on dimension 3, for example, which encodes the x coordinate of the green particle, the ground-truth causal parents of this variable is the x coordinates of the yellow and the blue particles. In the learnt causal graph, on column three, the learnt causal parents are dimensions 3, 6, 8, 14 and 15. The visualisation of the latent space (Fig. 12) suggests that dimensions 6 and 8 captures the x coordinates of the yellow and blue particles respectively, meaning that VCD has learnt the correct causal parents.

A similar analysis can be carried out on the intervention targets. Focusing on intervened environment 0, for example, the learnt intervention targets are dimension 1, 2, 3, 7, 8, 11, 13, 15. The ground-truth intervention ID is 1, i.e. the intervention targets are x, y coordinates of the yellow and green particles (see. table 3). By inspecting the VCD latent space (Fig. 12), dimensions 1 and 3 encodes the position of the green particle and dimensions 7, 8 and 11 encodes the position of the yellow particle. This shows that VCD is able to identify the changes in the environments.

In summary, while VCD identifies some false positive edges, it is able to capture the causal parents and the intervention targets in each environment.

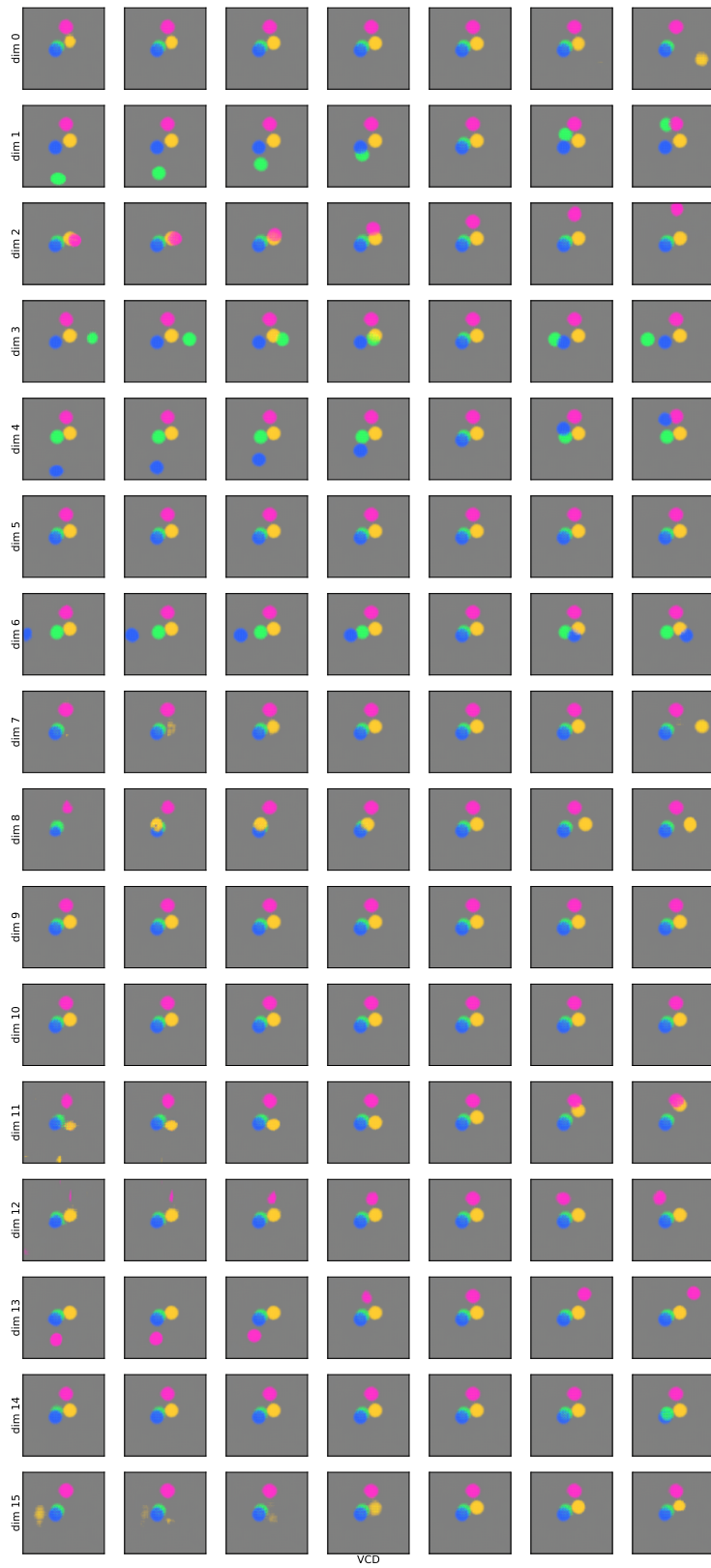


Figure 12: Visualisation of the learnt latent space in VCD.

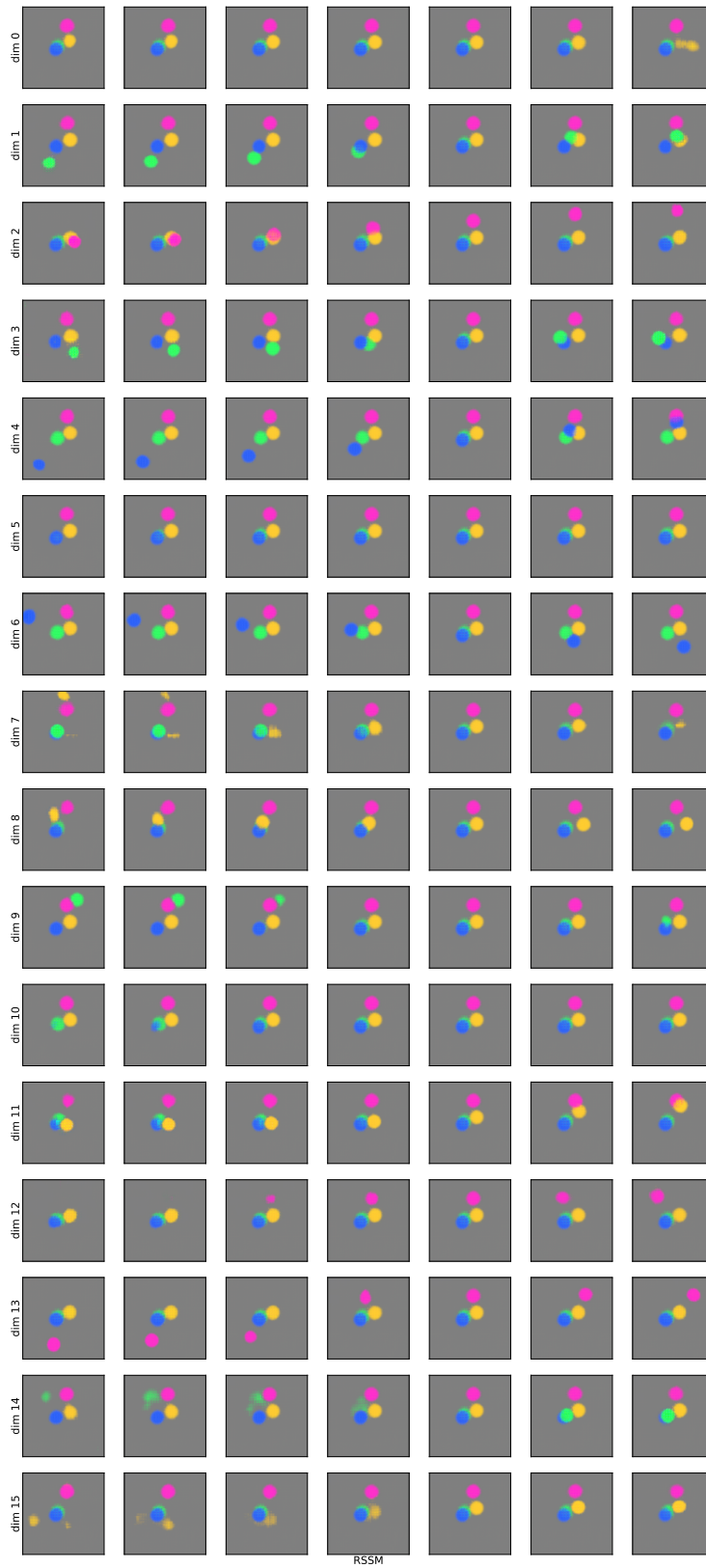


Figure 13: Visualisation of the learnt latent space in RSSM.

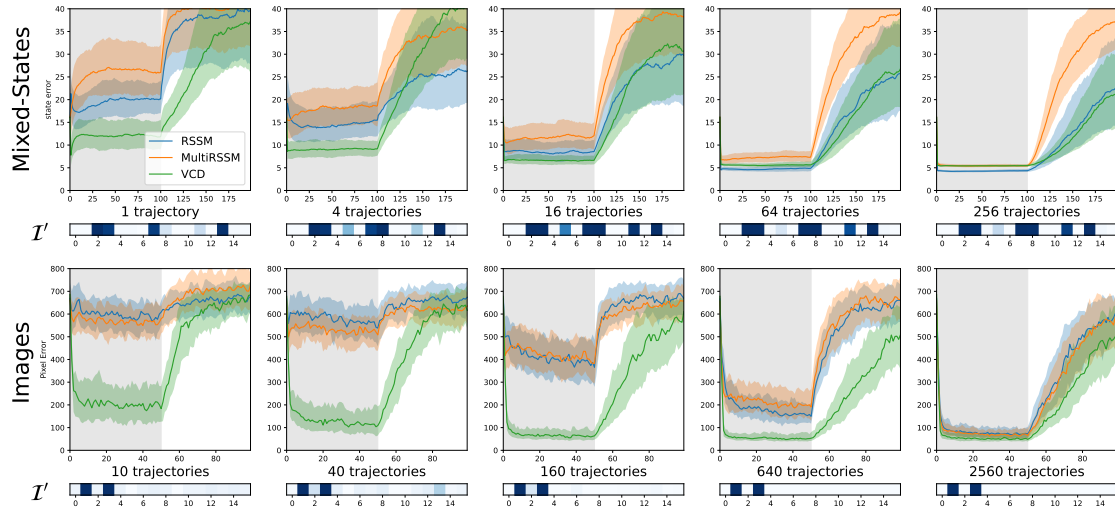


Figure 14: Adaptation results for intervention 4.

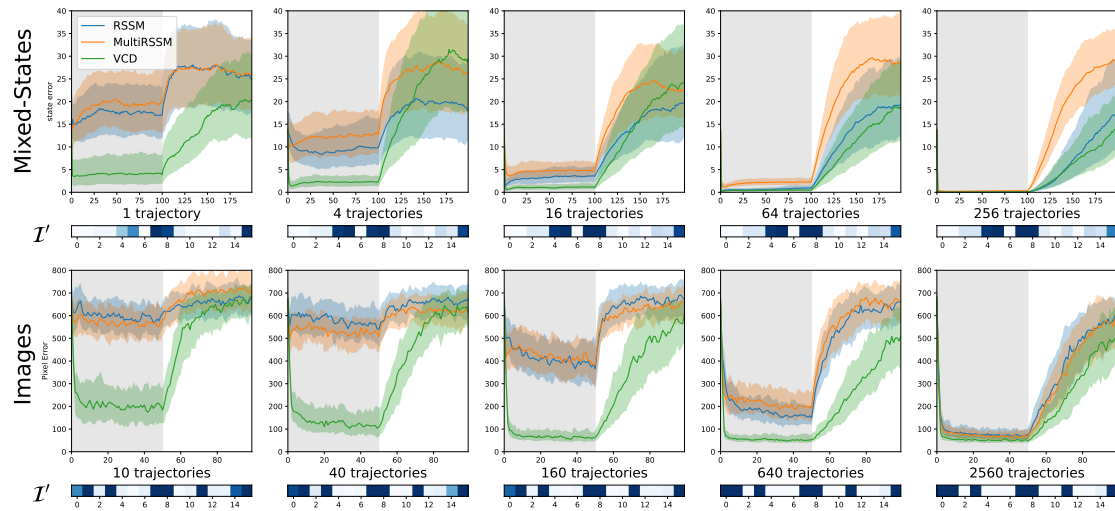


Figure 15: Adaptation results for intervention 9.

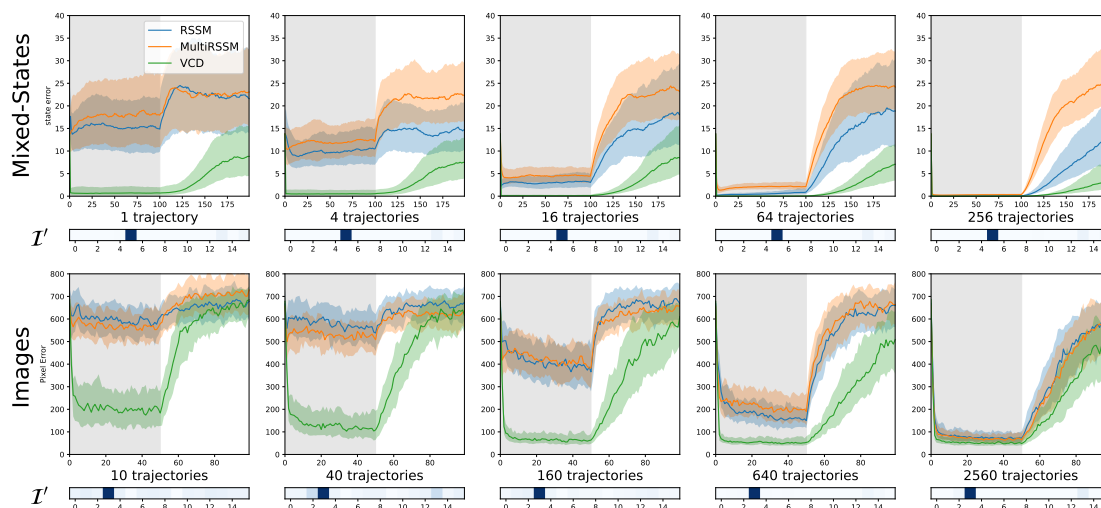


Figure 16: Adaptation results for intervention 13.

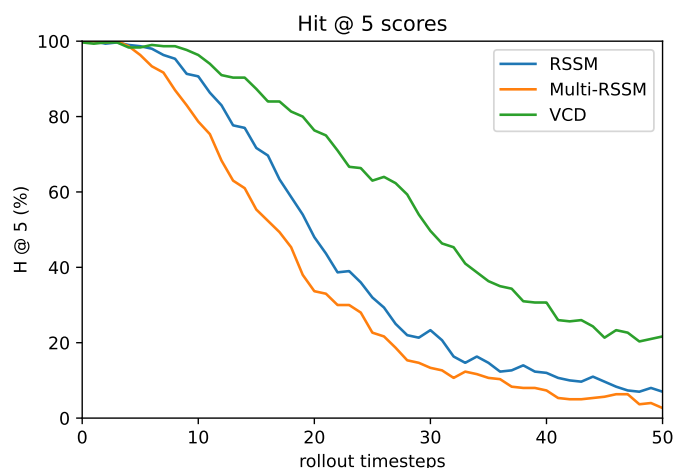


Figure 17: The H@5 score (higher is better) over rollout timesteps, i.e. unshaded regions in the main plots. This shows a consistent result as the main text, where VCD outperforms the baselines.

E Further Experiments

This section provides extra adaptation experiment results similar to Fig. 6 in the main text, where the models adapt to intervention number 12 (see table 3). We present experiment results for adaptation to different types of interventions (intervention numbers 4, 9, 13). Fig 14, 15 and 16 show the adaptation plots. The results exhibit a consistent pattern where VCD significantly outperforms the baselines in the low data regime by identifying sparse mechanism changes.

F Non-pixel-based error

In the image experiments, while pixel error is indicative of model performance in the short term, it provides limited clarity in long term predictions as two non-overlapping balls leads to the same pixel error regardless of their distance. In this section, we present an alternative latent space distance-based evaluation metric, Hit at 5 (H@5). This metric is defined by the proportion of episodes where the predicted latent representation

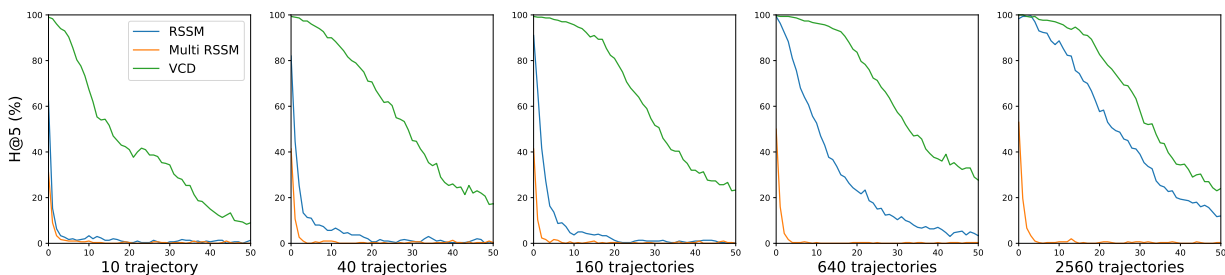
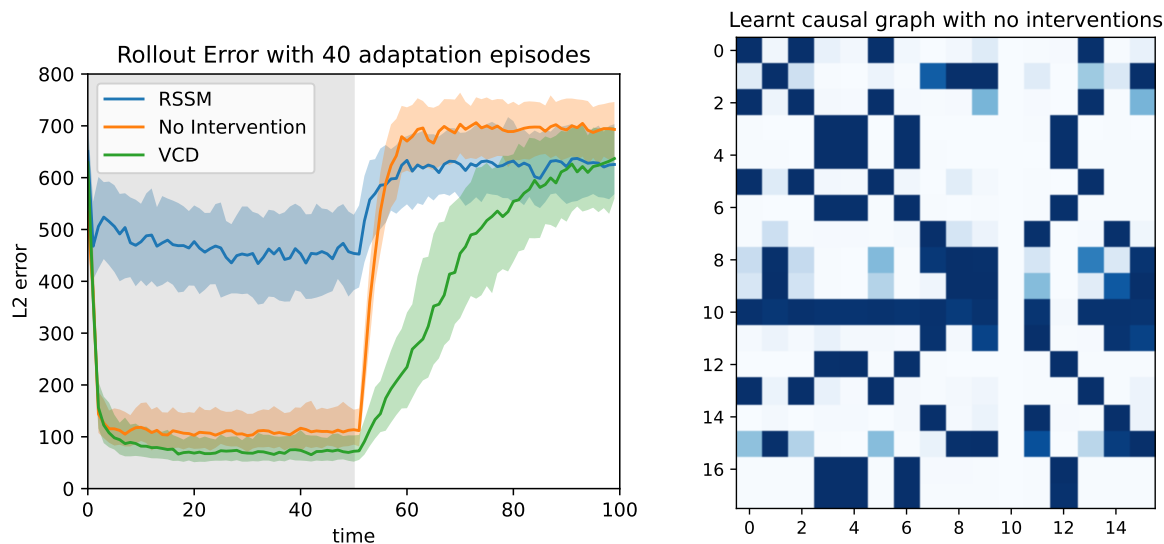


Figure 18: The adaptation plots with the H@5 scores.



(a) Rollout curves compared to the RSSM baseline and VCD with full interventional training.

(b) Learnt causal graph.

Figure 19: Training VCD without interventions results in a model that shows some causal structure. Compared to the VCD with full interventional training, the adaptation performance of the model is slightly degraded, but still significantly better than the RSSM baseline.

is in the top-5 nearest neighbour set of the encoded ground-truth image. A H@5 score of 1 means all predicted latent states lie within a close distance to the ground-truth representation. Fig 17 and 18 shows the prediction errors and the adaptation plots respectively. These are consistent with the results shown in the main text, where VCD outperforms the baselines in prediction accuracy as well as adaptation speed.

G Importance of Interventional Training

One of our hypothesis is that explicitly training the model to exhibit minimal changed across multiple interventional environments aids causal discovery and hence improves adaptation efficiency. Fig. 19 presents results where VCD is trained without interventions. It can be seen that the model is still able to learn causal structures, albeit less sparse compared to the full model. The adaptation performance is slightly worse than the full model but still much better than the baseline. This corroborates our claim that interventional training can improve structure learning and adaptation efficiency.