

Joint Entity and Relation Extraction with Span Pruning and Hypergraph Neural Networks

Zhaohui Yan^{1,2}, Songlin Yang^{3*}, Wei Liu^{1,2}, Kewei Tu^{1,2†}

¹School of Information Science and Technology, ShanghaiTech University

²Shanghai Engineering Research Center of Intelligent Vision and Imaging

³MIT CSAIL

{yanzh, liuwei4, tukw}@shanghaitech.edu.cn

yangsl66@mit.edu

Abstract

Entity and Relation Extraction (ERE) is an important task in information extraction. Recent marker-based pipeline models achieve state-of-the-art performance, but still suffer from the error propagation issue. Also, most of current ERE models do not take into account higher-order interactions between multiple entities and relations, while higher-order modeling could be beneficial. In this work, we propose HyperGraph neural network for ERE (HGERE), which is built upon the PL-marker (a state-of-the-art marker-based pipeline model). To alleviate error propagation, we use a high-recall pruner mechanism to transfer the burden of entity identification and labeling from the NER module to the joint module of our model. For higher-order modeling, we build a hypergraph, where nodes are entities (provided by the span pruner) and relations thereof, and hyperedges encode interactions between two different relations or between a relation and its associated subject and object entities. We then run a hypergraph neural network for higher-order inference by applying message passing over the built hypergraph. Experiments on three widely used benchmarks (ACE2004, ACE2005 and SciERC) for ERE task show significant improvements over the previous state-of-the-art PL-marker.¹

1 Introduction

Entity and Relation Extraction (ERE) is a fundamental task in information extraction (IE), comprising two sub-tasks: Named Entity Recognition (NER) and Relation Extraction (RE). There is a long debate on joint vs. pipeline methods for ERE. Pipeline decoding extracts entities first and predicts relations solely on pairs of extracted entities, while joint decoding predicts entities and relations simultaneously.

Recently, the seminal work of (Zhong and Chen, 2021) shows that pipeline decoding with a frustratingly simple marker-based encoding strategy — i.e., inserting solid markers (Baldini Soares et al., 2019; Xiao et al., 2020) around predicted subject and object spans in the input text — achieves state-of-the-art RE performance. Modified sentences (with markers) are fed into powerful pre-trained large language models (LLM) to obtain more subject- and object-aware representations for RE classification, which is the key to the performance improvement. However, current marker-based pipeline models (e.g., the recent state-of-the-art ERE model PL-marker (Ye et al., 2022)) *only* send predicted entities from the NER module to the RE module, therefore missing entities would never have the chance to be re-predicted, suffering from the *error propagation issue*. On the other hand, for joint decoding approaches (e.g. Table Filling methods (Miwa and Sasaki, 2014; Zhang et al., 2017; Wang and Lu, 2020))—though they do not suffer from the error propagation issue—it is hard to incorporate markers for leveraging LLMs, since entities are not predicted prior to relations. Our desire is to obtain the best of two worlds, being able to use marker-based encoding mechanism for enhancing RE performance and meanwhile alleviating the error propagation problem. We adopt PL-marker as the backbone of our proposed model and a span pruning strategy to mitigate error propagation. That is, instead of sending only predicted entity spans to the RE module, we *over-predict* candidate spans so that the recall of gold entity spans is nearly perfect (but there also could be many non-entity spans), transferring the burden of entity classification and labeling from the NER module to the RE module of PL-marker. The number of over-predicted spans is upper-bounded, balancing the computational complexity of marker-based encoding and the recall of gold entity span. Empirically, we find this simple strategy by itself clearly improves PL-marker.

*This work was done when Songlin was at ShanghaiTech.

† Corresponding Author

¹Source code is available at <https://github.com/yanzh/HGERE>

We further incorporate a *higher-order* interaction module into our model. Most previous ERE models either implicitly model the interactions between instances by shared parameters (Wang and Lu, 2020; Yan et al., 2021; Wang et al., 2021) or use a traditional graph neural network that models pairwise connections between a relation and an entity (Sun et al., 2019). It is difficult for these approaches to explicitly model higher-order relationships among multi-instances, e.g. the dependency among a relation and its corresponding subject and object entities. Many recent works in structured prediction tasks show that explicit higher-order modeling is still beneficial even with powerful large pretrained encoders (Zhang et al., 2020a; Li et al., 2020; Yang and Tu, 2022; Zhou et al., 2022, *inter alia*), motivating us to use an additional higher-order module to enhance performance.

A common higher-order modeling approach is by means of probabilistic modeling (i.e., conditional random field (CRF)) with end-to-end Mean-Field Variational Inference (MFVI), which can be seamlessly integrated into neural networks as a recurrent neural network layer (Zheng et al., 2015a), and has been widely used in various structured prediction tasks, such as dependency parsing (Wang et al., 2019), semantic role labeling (Li et al., 2020; Zhou et al., 2022), and information extraction (Jia et al., 2022). However, the limitations of CRF modeling with MFVI are i): CRF’s potential functions are parameterized in log-linear forms with strong independence assumptions, suffering from low model capacities (Qu et al., 2022), ii) MFVI uses fully-factorized Bernoulli distributions to approximate the otherwise multimodal true posterior distributions, oversimplifying the inference problem and thus is sub-optimal. Therefore we need more *expressive* tools to improve the quality of higher-order inference. Fortunately, there are many recent works in the machine learning community showing that graph neural networks (GNN) can be used as an inference tool and outperform approximate statistical inference algorithms (e.g., MFVI) (Yoon et al., 2018; Zhang et al., 2020b; Kuck et al., 2020; Satorras and Welling, 2021) (see (Hua, 2022) for a survey). Inspired by these works, we employ a hypergraph neural network (HyperGNN) instead of MFVI for high-order inference and propose our model HGERE (HyperGraph Neural Network for ERE). Concretely, we build a hypergraph where nodes are candidate subjects and objects (obtained

from the span pruner) and relations thereof, and hyperedges encode the interactions between either two relations with shared entities or a relation and its associated subject and object entity spans. In contrast, existing GNN models for IE (Sun et al., 2019; Nguyen et al., 2021) only model the pairwise interactions between a relation and one of its corresponding entity. We empirically show the advantages of our higher-order interaction module (i.e., hypergraph neural network) over MFVI and traditional GNN models.

Our contribution is three-fold: i) We adopt a simple and effective span pruning method to mitigate the error propagation issue, enforcing the power of marker-based encoding. ii) We propose a novel hypergraph neural network enhanced higher-order model, outperforming higher-order CRF-based models with MFVI. iii) We show great improvements over the prior state-of-the-art PL-marker on three commonly used benchmarks for ERE: ACE2004, ACE2005 and SciERC.

2 Background

2.1 Problem formulation

Given a sentence X with n tokens: x_1, x_2, \dots, x_n , an entity span is a sequence of tokens labeled with an entity type and a relation is an entity span pair labeled with a relation type. We denote the set of all entity spans of the sentence with a span length limit L by $S(X) = \{s_1, s_2, \dots, s_m\}$ and define $ST(i)$ and $ED(i)$ as the start and end token indices of the span s_i .

The joint ERE task is to simultaneously solve the NER and RE tasks. Let \mathcal{C}_e be the set of entity types and \mathcal{C}_r be the set of relation types. For each span $s_i \in S(X)$, the NER task is to predict an entity type $y_e(s_i) \in \mathcal{C}_e$ or $y_e(s_i) = \text{null}$ if the span s_i is not an entity. The RE task is to predict a relation type $y_r(r_{ij}) \in \mathcal{C}_r$ or $y_r(r_{ij}) = \text{null}$ for each span $r_{ij} = (s_i, s_j), s_i, s_j \in S(X)$.

2.2 Packed levitated marker (PL-marker)

Zhong and Chen (2021) insert two pairs of solid markers (i.e., $[S]$ and $[\backslash S]$) to highlight both the subject and object entity spans in a given sentence, and this simple approach achieves state-of-the-art RE performance. We posit that this is because LLM is more aware of the subject and object spans (with markers) and thus can produce better span representations to improve RE. But this strategy needs to iterate over all possible entity span pairs and is

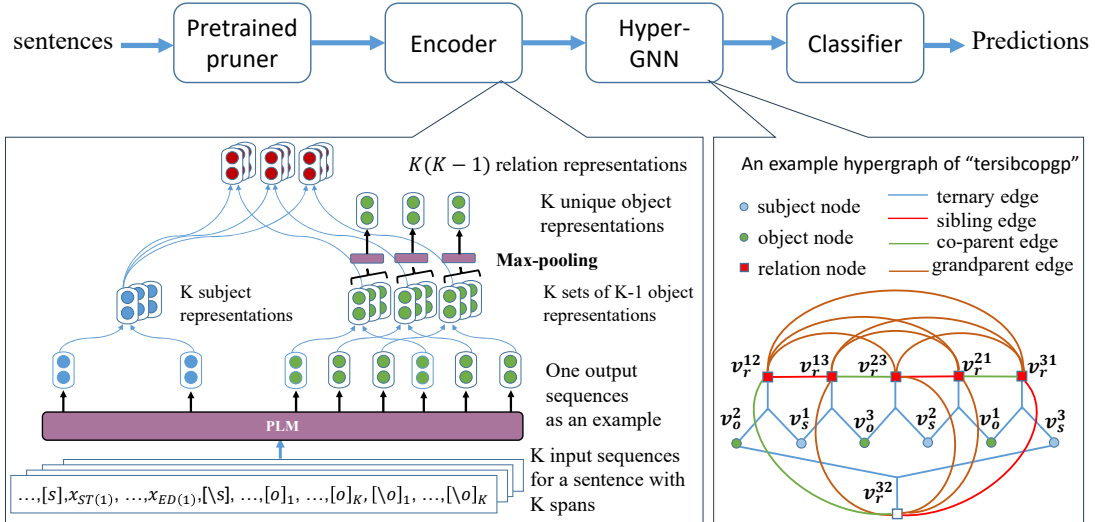


Figure 1: Illustration of our framework

thus slow. To tackle the efficiency problem, [Zhong and Chen \(2021\)](#) propose an approximated variant wherein each possible entity span is associated with a pair of levitated markers (i.e., $[O]$ and $[\backslash O]$) whose representations are initialized with the positional embedding of the span’s start and end tokens, and all such levitated markers are concatenated to the end of the sentence. As such, levitated-marker-based encoding needs only one pass, significantly improving efficiency at the cost of slight performance drop. [Zhong and Chen \(2021\)](#) also propose a masked attention mechanism such that the original input text tokens are not able to attend to markers, while markers can attend to paired markers (but not unpaired markers) and all input text tokens. As a consequence, the relative positions of levitated markers in the concatenated sentence do not matter at all, eliminating potential implausible inductive bias on the concatenation order.

However, marker-base encoding is only used in RE, not in NER. To leverage marker-based encoding in the NER module for modeling span interrelations, PL-marker ([Ye et al., 2022](#)) associates each possible span with two levitated markers and concatenates all of them to the end of the input sentence. However, this strategy could make the input sentence extremely long since there are quadratic number of spans. To solve this issue, PL-marker clusters the markers based on the starting position of their corresponding spans, and divides them into N groups. Then the input sentence is duplicated N times and each group of levitated markers is concatenated to the end of one sentence copy. [Ye et al. \(2022\)](#) refers to this strategy as *neighborhood-*

oriented packing scheme. Furthermore, to balance the efficiency and the model expressiveness, [Ye et al. \(2022\)](#) combine solid markers and levitated markers, proposing *Subject-oriented Packing for Span Pair* in the RE module. That is, if there are m entities, they copy the sentence for m times, and for each copy, they use solid markers to mark a different entity as the subject and concatenate the levitated markers of all other entities (as objects) at the end of the sentence.

3 Method

Overview. Our method is built upon the state-of-the-art PL-marker. We employ a high-recall span pruner to obtain candidate entity spans, similar to the NER module in PL-marker. However, instead of aiming to accurately predict all possible entity spans, our pruner focuses on removing unlikely candidates to achieve a much higher recall. Then we feed the candidate span set to the RE module to obtain entity and relation representations, which are used to initialize the node representations of our hypergraph neural network for higher-order inference with a message passing scheme. Finally, we perform NER and RE based on the refined entity and relation representations. Fig. 1 depicts the neural architecture of our model.

3.1 Span Pruner

We adopt the neighborhood-oriented packing scheme from PL-marker for span encoding, except that we simply predict entity existence (i.e., binary classification) instead of predicting entity labels during the training phrase. See Appendix A.4 for

details.

To produce a candidate span set, we rank all the spans by their scores and take top K as our prediction $S_p(X)$. We assume that the number of entity spans of a sentence is linear to its length n , so K is set to $\lambda \cdot n$ where λ is a coefficient. For a very long sentence, the number of entity spans is often sublinear to n , while for a very short sentence, we wish to keep enough candidate spans, so we additionally set an upper and lower bound: $K = \max(l_{\min}, \min(\lambda \cdot n, l_{\max}))$.

In practice, with our span pruner, more than 99% gold entity spans are included in the candidate set for all three datasets. If we predict entities as in PL-marker instead of pruning, only around 95% and 80% gold entities are kept in the predicted entities for ACE2005 and SciERC respectively, leading to severe error propagation (see §5.1 for an ablation study).

The span pruner is trained independently from the joint ERE model introduced in the next section. This is because the joint ERE training loss will be defined based on candidate entity spans produced by the span pruner. When sharing parameters, the pruner would provide a different candidate span set during training, leading to moving targets and thereby destabilizing the whole training process.

3.2 Joint ERE Model: First-order Backbone

The backbone module is based on the RE module of PL-marker. Concretely, given an input sentence $X = \{x_1, x_2, \dots, x_n\}$ and a subject span $s_i = (x_{\text{ST}(i)}, x_{\text{ED}(i)}) \in S_p(X)$ provided by the span pruner, every entity span $s_j \in S_p(X)$, $1 \leq j \leq K$, $j \neq i$ could be a candidate object span of s_i . The module inserts a pair of solid markers $[S]$ and $[\backslash S]$ before and after the subject span and assign every object span s_j a pair of levitated markers $[O]_j$ and $[\backslash O]_j$. As shown below, the levitated markers are packed together and inserted at the end of the input sequence to a PLM:

$$x_1, \dots, [S], x_{\text{ST}(i)}, \dots, x_{\text{ED}(i)}, [\backslash S], \dots, x_n, \\ [O]_1, \dots, [O]_K, [\backslash O]_1, \dots, [\backslash O]_K$$

Then we obtain the contextualized hidden representation \mathbf{h}_x of the modified input sequence and the final subject representation is:

$$\mathbf{h}_s(s_i) = \text{FFN}_s([\mathbf{h}_x([S]); \mathbf{h}_x([\backslash S])])$$

FFN represents a single linear layer in this work. The object representation of s_j for the current subject s_i and the representation of relation $r_{ij} =$

(s_i, s_j) are:

$$\mathbf{h}_o^i(s_j) = \text{FFN}_o([\mathbf{h}_x([O]_j); \mathbf{h}_x([\backslash O]_j)])$$

$$\mathbf{h}_r(r_{ij}) = \text{FFN}_r([\mathbf{h}_s(s_i); \mathbf{h}_o^i(s_j)])$$

Repeating K times, we get all K subject representations and $K(K-1)$ relation representations. As the object representation of s_j is not identical for different subject span s_i , there are K object representation sets \mathbf{h}_o^i , $1 \leq i \leq K$. We apply a max-pooling layer to obtain a unique object representation for each object span $s_j \in S_p(X)$:

$$\mathbf{h}_o(s_j) = \text{Maxpooling}_{1 \leq i \leq K, i \neq j}(\mathbf{h}_o^i(s_j))$$

3.3 Joint ERE Model: Higher-order Inference with Hypergraph Neural Networks

Hypergraph Building So far, the representations of the entities and relations from the backbone module do not explicitly consider beneficial interactions among related instances. To model higher-order interactions among a relation and its associated subject and object entities as well as between any two relations sharing an entity, we build a hypergraph $\mathcal{G} = (\mathcal{V}, \mathcal{E})$ to connect the related instances. The nodes set \mathcal{V} is composed of candidate subjects, objects (provided by the span pruner) and all possible pairwise relations thereof, and we denote them as $\mathcal{V}_s = \{v_s^i | i \in [1, K]\}$, $\mathcal{V}_o = \{v_o^j | j \in [1, K]\}$ and $\mathcal{V}_r = \{v_r^{ij} | i, j \in [1, K], i \neq j\}$.

Hyperedges \mathcal{E} capture the interactions we are concerned with, and they can be divided into two categories: the subject-object-relation (sub-obj-rel) hyperedges \mathcal{E}_{sor} and the relation-relation (rel-rel) hyperedges \mathcal{E}_{rr} . Each hyperedge $e_{sor}^{ij} \in \mathcal{E}_{sor}$ connects a subject node v_s^i , an object node v_o^j and the corresponding relation node v_r^{ij} , and we refer to these hyperedges as *ternary edges* (*ter* for short). Each rel-rel edge $e_{rr}^{ijk} \in \mathcal{E}_{rr}$ connects two relation nodes with a shared subject or object entity. We assume in a relation, the subject is the parent node and the object is the child node, and then we can refine rel-rel edges into three subtypes, *sibling* (*sib*, connecting v_r^{ij} and v_r^{ik}), *co-parent* (*cop*, connecting v_r^{ij} and v_r^{kj}) and *grand-parent* (*gp*, connecting v_r^{ij} and v_r^{jk}), following the common definitions in the dependency parsing literature.

If we incorporate all aforementioned hyperedges into the hypergraph, we obtain the *tersibcopgp* variant which is illustrated in Fig. 1. By removing some types of hyperedges we can get different variants, but without loss of generality we describe

the message passing scheme in the following using *tersibcopgp*.

As such, we can define a CRF on the hypergraph and leverage probabilistic inference algorithms such as MFVI for higher-order inference. However, as discussed in §1, we can use a more expressive method to improve inference quality and introduce a HyperGraph Neural Network (HGNN) as described next.

Initial node representation For a relation node v_r^{ij} with its associated subject node v_s^i and object node v_o^j , we use $\mathbf{g}^l(v_r^{ij})$, $\mathbf{g}^l(v_s^i)$, $\mathbf{g}^l(v_o^j)$ to denote their respective representation outputs from the l -th HGNN layer. Initial node representations (before being fed to a HGNN) are $\mathbf{g}^0(v_s^i) = \mathbf{h}_s(s_i)$, $\mathbf{g}^0(v_o^j) = \mathbf{h}_o(s_j)$ and $\mathbf{g}^0(v_r^{ij}) = \mathbf{h}_r(r_{ij})$, respectively (from the backbone module).

Message representation A hyperedge connecting to nodes serve as the bridge for message passing between nodes connected by it. Let $\mathcal{N}_e(v)$ be the set of hyperedges connecting to a node v .

For a *ter* hyperedge $e_{ter}^{ij} \in \mathcal{E}_{sor}$ connecting a subject node v_s^i , a object node v_o^j and a relation node v_r^{ij} , the message representation it carries is:

$$\begin{aligned} \mathbf{hr}_{ij}^l &= \text{FFN}_r^{ter}(\mathbf{g}^{l-1}(v_r^{ij})) \\ \mathbf{hs}_i^l &= \text{FFN}_s^{ter}(\mathbf{g}^{l-1}(v_s^i)) \\ \mathbf{ho}_j^l &= \text{FFN}_o^{ter}(\mathbf{g}^{l-1}(v_o^j)) \\ \mathbf{m}^l(e_{ter}^{ij}) &= \text{FFN}_e^{ter}(\mathbf{hr}_{ij}^l \circ \mathbf{hs}_i^l \circ \mathbf{ho}_j^l) \end{aligned}$$

where \circ is the Hadamard product.

A rel-rel edge $e_z^{ijk} \in \mathcal{E}_{rr}$, $z \in \{sib, cop, gp\}$ connects two relations sharing an entity. For simplicity, we denote them relation a and b . If we fix a as $a \triangleq v_r^{ij}$, then as previously described, relation b is v_r^{ik} for *sib* edge, v_r^{kj} for *cop* edge, and v_r^{jk} for *gp* edge. The message e_z^{ijk} carries is given by,

$$\begin{aligned} \mathbf{h}_z^l(a) &= \text{FFN}_a^z(\mathbf{g}^{l-1}(a)) \\ \mathbf{h}_z^l(b) &= \text{FFN}_b^z(\mathbf{g}^{l-1}(b)) \\ \mathbf{m}^l(e_z^{ijk}) &= \text{FFN}_e^z(\mathbf{h}_z^l(a) \circ \mathbf{h}_z^l(b)) \end{aligned}$$

Node representation update We aggregate messages for each node $v \in \mathcal{V}$ from adjacent edges $\mathcal{N}_e(v)$ with an attention mechanism by taking a learned weighted sum, and add the aggregated message to the prior node representation,

$$\begin{aligned} \beta^l(e, v) &= \mathbf{w}^\top \sigma(\mathbf{W}[\mathbf{g}^{l-1}(v); \mathbf{m}^l(e)]) \\ \alpha^l(e, v) &= \frac{\exp \beta^l(e, v)}{\sum_{e' \in \mathcal{N}_e(v)} \exp \beta^l(e', v)} \\ \mathbf{g}^l(v) &= \mathbf{g}^{l-1}(v) + \sum_{e \in \mathcal{N}_e(v)} \alpha^l(e, v) \mathbf{m}^l(e) \end{aligned}$$

where $\sigma(\cdot)$ is a non-linear activator and \mathbf{w} , \mathbf{W} are two trainable parameters. An entity node would receive messages only from *ter* edges while a relation node would receive messages from both *ter* edges and rel-rel edges.

Training We obtain refined $\mathbf{g}^l(v)$ from the final layer of HGNN. Given an entity span $s_i \in S_p(X)$, we concatenate the corresponding subject representation $\mathbf{g}^l(v_s^i)$ and object representation $\mathbf{g}^l(v_o^i)$ to obtain the entity representation, and compute the probability distribution over the types $\{\mathcal{C}_e\} \cup \{\text{null}\}$:

$$P_e(\hat{y}_e | s_i) = \text{Softmax}(\text{FFN}_e^{cls}([\mathbf{g}^l(v_s^i); \mathbf{g}^l(v_o^i)]))$$

Given a relation $r_{ij} = (s_i, s_j)$, $s_i, s_j \in S_p(X)$, we compute the probability distribution over the types $\{\mathcal{C}_r\} \cup \{\text{null}\}$:

$$P_r(\hat{y}_r | r_{ij}) = \text{Softmax}(\text{FFN}_r^{cls}(\mathbf{g}^l(v_r^{ij})))$$

We use the cross-entropy loss for both entity and relation prediction:

$$\begin{aligned} L_e &= - \sum_{s_i \in S_p(X)} \log(P_e(y_e^*(s_i) | s_i)) \\ L_r &= - \sum_{s_i, s_j \in S_p(X)} \log(P_r((y_r^*(r_{ij}) | r_{ij})) \end{aligned}$$

where y_e^* and y_r^* are gold entity and relation types respectively. The total loss is $L = L_e + L_r$.

4 Experiment

Datasets We experiment on SciERC (Luan et al., 2018), ACE2004 (Doddington et al., 2004) and ACE2005 (Walker et al., 2006). We follow Ye et al. (2022) to split ACE2004 into 5 folds and split ACE2005 and SciERC into train/dev/test sets. See Appendix A.1 for detailed dataset statistics.

Evaluation metrics We report micro labeled F1 measures for NER and RE. For RE, the difference between Rel and Rel+ is that the former requires correct prediction of subject and object entity spans and the relation type between them, while the latter additionally requires correct prediction of subject and object entity types.

²Ye et al. (2022) count a symmetric relation twice for evaluation which is inconsistent with previous work.

Models	Encoder	ACE2005			ACE2004			SciERC		
		Ent	Rel	Rel+	Ent	Rel	Rel+	Ent	Rel	Rel+
(Wadden et al., 2019)*		88.6	63.4	-	-	-	-	67.5	48.4	-
(Wang et al., 2021)*		88.8	-	64.3	87.7	-	60.0	68.4	-	36.9
(Zhong and Chen, 2021)*		90.1	67.7	64.8	89.2	63.9	60.1	68.9	50.1	36.8
(Yan et al., 2021)		-	-	-	-	-	-	66.8	-	38.4
(Shen et al., 2021)*	BERT _B / SciBERT	87.6	66.5	62.8	-	-	-	70.2	52.4	-
(Nguyen et al., 2021)		88.9	68.9	-	-	-	-	-	-	-
(Ye et al., 2022)* _{re}		89.1	68.3	65.1	88.5	66.3	62.2	68.8	51.1	38.3
Backbone*		90.0	69.8	66.7	89.5	66.6	62.1	71.3	52.3	40.2
GCN*		90.2	69.6	66.5	90.0	67.6	63.5	74.1	54.8	42.9
MFVI*		90.2	69.7	67.1	89.7	67.4	63.4	73.3	54.7	42.5
HGERE* (our model)		90.2	70.7	67.5	89.9	68.2	64.2	74.9	55.7	43.6
(Liu et al., 2022)	T5 _{3B}	91.3	72.7	70.5	-	-	-	-	-	-
(Wang and Lu, 2020)		89.5	67.6	64.3	88.6	63.3	59.6	-	-	-
(Wang et al., 2021)*		90.2	-	66.0	89.5	-	63.0	-	-	-
(Zhong and Chen, 2021)*		90.9	69.4	67.0	90.3	66.1	62.2	-	-	-
(Yan et al., 2021)		89.0	-	66.8	89.3	-	62.5	-	-	-
(Ye et al., 2022)* _{re}	ALBERT	91.3	72.5	70.5	90.5	69.3	66.1	-	-	-
Backbone*		91.5	72.9	70.2	91.6	70.2	66.6	-	-	-
GCN*		91.7	73.1	69.9	92.0	71.5	67.9	-	-	-
MFVI*		91.6	72.7	70.1	89.9	68.5	65.1	-	-	-
HGERE* (our model)		91.9	73.5	70.8	91.9	71.9	68.3	-	-	-

Table 1: F1 scores and standard deviations on ACE2004, ACE2005 and SciERC. The models marked with * leverage cross-sentence information. A model with subscript *re* means we re-evaluate the model with the evaluation method commonly used in other work². Backbone, MFVI and GCN are our baseline models.

Baseline Our baseline models include: i) **Backbone**. It is described in Sect. 3.2 and does not contain the higher-order interaction module. ii) **GCN**. It has a similar architecture to Sun et al. (2019); Nguyen et al. (2021) and does not contain higher-order hyperedges. See Appendix A.6 for a detailed description. iii) **MFVI**. It defines a CRF on the same hypergraph as our model and uses MFVI instead of hypergraph neural networks for higher-order inference. See Appendix A.5 for a detailed description.

Implementation details For a fair comparison with previous work, we use *bert-base-uncased* (Devlin et al., 2019) and *albert-xxlarge-v1* (Lan et al., 2020) as the base encoders for ACE2004 and ACE2005, *scibert-scivocab-uncased* (Beltagy et al., 2019) as the base encoder for SciERC. GCN and MFVI are also built upon Backbone. The implementation details of experiments are in Appendix A.3.

Main results For HGERE, we report the best results among the following variants of hypergraphs with different types of hyperedges: *ter*, *cop*, *sib*, *gp*, *tersib*, *tercop*, *tergp*, *tersibcop*, *tersibgp*, *tercopgp*, and *tersibcopgp*. The best variants of HGERE are *tersibcop* on SciERC and ACE2005 (BERT_B); *tersib* on ACE2005 (ALBERT); *tercop*

on ACE2004. For MFVI we use the same variants as used in HGERE.

Table 1 shows the main results. Surprisingly, Backbone outperforms prior approaches in almost all metrics by a large margin (except on ACE2004 with BERT_B and ACE2005 with ALBERT), which we attribute to the reduction of error propagation with a span pruning mechanism. Our proposed model HGERE outperforms almost all baselines in all metrics (except the entity metric on ACE2004), validating that using hyperedges to encode higher-order interactions is effective (compared with GCN) and that using hypergraph neural networks for higher-order modeling and inference is better than CRF-based probabilistic modeling with MFVI. Finally, we remark that HGERE obtains state-of-the-art performances on all the three datasets.

5 Analysis

5.1 Effectiveness of the span pruner

To study the effectiveness of the span pruner, we replace it with an entity identifier which is the original NER module from PL-marker and is trained only on entity existence. The performance of the span pruner and the entity identifier (denoted by Eid) on entity existence is shown in Table 2. We can observe that if we replace the span pruner with the entity identifier, the recall of gold *unlabeled*

		SciERC			ACE2005 (BERT _B)		
		P	R	F1	P	R	F1
Eid	train	98.8	98.2	98.5	100.0	99.9	99.9
	dev	81.0	81.6	81.3	94.7	94.6	94.7
	test	80.4	78.7	79.5	95.6	95.8	95.7
Pruner	train	38.0	99.2	54.9	37.2	99.9	54.2
	dev	38.1	99.1	55.0	36.4	99.7	53.3
	test	38.7	99.2	55.7	37.0	99.8	54.0

Table 2: Evaluation results on entity existence of the span pruner vs. an entity identifier.

SciERC		Ent	Rel	Rel+
Eid	Backbone	69.4	50.3	39.0
	HGERE	69.4	51.5	39.5
pruner	Backbone	71.3	52.3	40.2
	HGERE	74.9	55.7	43.6
ACE2005 (BERT _B)		Ent	Rel	Rel+
Eid	Backbone	89.5	68.3	65.3
	HGERE	89.5	68.5	66.0
pruner	Backbone	90.0	69.8	66.7
	HGERE	90.2	70.7	67.5

Table 3: F1 scores of Backbone and HGERE with and without a pre-trained span pruner on the SciERC and ACE2005 (BERT_B) test set.

entity spans drops from 99.2 to 78.7 on the SciERC test set, and drops from 99.8 to 95.8 on the ACE2005 test set. We further investigate how the choice of the span pruner vs. the entity identifier influences NER and RE performances. The results are shown in Table 3. We can see that without a span pruner, both NER and RE performances drop significantly, validating the usefulness of using a span pruner. Moreover, it has a consequent influence on the higher-order inference module (i.e., HGNN). Without a span pruner, the improvement from using a HGNN over Backbone is marginal compared to that with a span pruner. We posit that without a pruner many gold entity spans could not exist in the hypergraph of HGNNs, making true entities and relations less connected in the hypergraph and thus diminishing the usefulness of HGNNs.

5.2 Effect of the choices of hyperedges

We compare different variants of HGNN with different combinations of hyperedges. Note that if *ter* is not used, entity nodes do not have any hyperedges connecting to them, so their representations would not be refined. We can see that in the *sib*

HGERE	SciERC		
	Ent	Rel	Rel+
Backbone	71.3	52.3	40.2
<i>ter</i>	74.2	55.1	42.6
<i>sib</i>	71.7	54.3	41.7
<i>cop</i>	71.7	52.9	40.8
<i>gp</i>	71.3	51.9	40.1
<i>tersib</i>	74.7	55.9	43.3
<i>tercop</i>	74.7	55.7	43.6
<i>tergp</i>	74.5	54.9	42.4
<i>tersibcop</i>	74.9	55.7	43.6
<i>tersibgp</i>	74.2	54.1	41.8
<i>tercopgp</i>	74.7	54.0	42.3
<i>tersibcopgp</i>	74.3	54.6	41.7

Table 4: F1 scores of HGERE with different graph topologies on the SciERC test set.

and *cop* variants, the NER performance improves slightly, which we attribute to the shared encoder of NER and RE tasks³. On the other hand, in the *ter* variant, entity node representations are iteratively refined, resulting in significantly better NER performance than Backbone (74.2 vs. 71.3). Combining *ter* edges with other rel-rel edges (e.g., *sib*) is generally better than using *ter* alone in terms of NER performance, suggesting that joint (and higher-order) modeling of NER and RE indeed has a positive influence on NER, while prior pipeline approaches (e.g., PL-marker) cannot enjoy the benefit of such joint modeling.

For RE, *sib* and *cop* have positive effects on the performance (despite *gp* having a negative effect somehow), showing the advantage of modeling interactions between two different relations. Further combining them with *ter* improves RE performances in all cases, indicating that NER also has a positive effect on RE and confirming again the advantage of joint modeling of NER and RE.

5.3 Inference speed of higher-order module

To analyze the computing cost of our higher-order module, we present the inference speed of HGERE with three baseline models Backbone, GCN and MFVI on the test sets of SciERC and ACE2005. Inference speed is measured by the number of candidate entities processed per second. The results are shown in Table 5. We can observe that

³Though Zhong and Chen (2021) argue that using shared encoders would suffer from the *feature confusion problem*, later works show that shared encoders can still outperform separated encoders (Yan et al., 2021, 2022).

when utilizing a relatively smaller PLM, HGERE, GCN and MFVI were slightly slower than the first-order model Backbone. However, the difference in speed between HGERE and the other models was relatively small. When using ALBERT, which is much slower than BERT_B, all four models demonstrated comparable inference speeds.

	SciERC		ACE2005
	SciBERT	BERT _B	ALBERT
Backbone	19.4	38.0	6.1
GCN	15.7	33.8	6.3
MFVI	16.5	36.9	6.1
HGERE	15.7	30.7	6.0

Table 5: Comparison of inference speed (#entities/sec) between HGERE and three baseline models on test sets of SciERC and ACE2005.

5.4 Error correction analysis

We provide quantitative error correction analysis between our higher-order approach HGERE and the first-order baseline Backbone on the SciERC dataset in Fig. 2. We can see that most error corrections of entities and relations made by HGERE come from two categories. The first category is where Backbone incorrectly predicts a true entity or relation as null, and the second category is where Backbone incorrectly assigns a label to a null sample.

6 Related Work

Entity and relation extraction The entity and relation extraction task has been studied for a long time. The mainstream methods could be divided into pipeline and joint approaches. Pipeline methods tackle the two subtasks, named entity recognition and relation extraction, consecutively (Zelenko et al., 2003; Chan and Roth, 2011; Zhong and Chen, 2021; Ye et al., 2022). By utilizing a new marker-based embedding method, Ye et al. (2022) becomes the new state-of-the-art ERE model. However, pipeline models have the inherent error propagation problem and they could not fully leverage interactions across the two subtasks. Joint approaches, on the other hand, can alleviate the problem by simultaneously tackling the two subtasks, as empirically revealed by Yan et al. (2022). Various joint approaches have been proposed to tackle ERE. Miwa and Bansal (2016); Katiyar and Cardie (2017) use a stacked model for joint learning through shared

True labels	Predicted labels						
	method	otherscientificterm	task	generic	material	metric	null
method	3	0	-2	-1	0	4	-4
otherscientificterm	-2	16	-3	0	1	-2	-10
task	0	5	-1	0	0	1	-5
generic	-1	3	-1	10	0	1	-12
material	0	-2	0	0	10	0	-8
metric	-2	3	1	0	0	-3	1
null	-3	-42	-15	-29	-14	-6	0

(a) Error correction matrix of HGERE vs. Backbone of entities

True labels	Predicted labels							
	part-of	used-for	feature-of	evaluate-for	hyponym-of	conjunction	compare	null
part-of	7	2	-2	0	-1	0	0	-6
used-for	-1	20	0	2	0	0	0	-21
feature-of	-2	1	1	1	0	0	0	-1
evaluate-for	0	1	0	7	0	0	0	-8
hyponym-of	0	-1	0	0	11	0	0	-10
conjunction	0	0	0	0	0	0	-1	1
compare	0	0	0	0	0	0	6	-6
null	8	-11	-6	1	1	-3	-2	0

(b) Error correction matrix of HGERE vs. Backbone of relations

Figure 2: Error correction of entity and relation types on the SciERC dataset. Red color indicates positive corrections and blue color indicates negative corrections. Specifically, positive numbers on the diagonal of the matrix (in red color) indicate that HGERE makes more correct predictions compare to Backbone; negative numbers on non-diagonal entries (in red color) indicate that HGERE makes fewer wrong predictions compare to Backbone. Numbers in blue indicate the opposite. We do not count the null-null case.

parameters. Miwa and Sasaki (2014); Gupta et al. (2016); Wang and Lu (2020); Wang et al. (2021); Yan et al. (2021) tackle both the NER and RE tasks as tagging entries of a table. Fu et al. (2019); Sun et al. (2019) leverage a graph convolutional network (GCN) on an instance dependency graph to enhance instance representations. (Nguyen et al., 2021) propose a framework to tackle multiple Information Extraction tasks jointly including the ERE task where a GCN is used to capture the interactions between related instances.

Another line of research is based on text-to-text models for structure prediction including ERE. Normally they are not task-specialized and could solve

several structure prediction tasks in a unified way (Paolini et al., 2021; Lu et al., 2022; Liu et al., 2022).

This work is similar to Sun et al. (2019); Nguyen et al. (2021) for we both use a graph neural network to enhance the instance representations. The main difference is that the GCN they use cannot adequately model higher-order relationship among multiple instances, while our hypergraph neural network is designed for higher-order modeling.

CRF-based higher-order model A commonly used higher-order model utilizes approximate inference algorithms (mean-field variational inference or loopy belief propagation) on CRFs. Zheng et al. (2015b) formulate the mean-field variational inference algorithm on CRFs as a stack of recurrent neural network layers, leading to an end-to-end model for training and inference. Many higher-order models employ this technique for various NLP tasks, such as semantic parsing (Wang et al., 2019; Wang and Tu, 2020) and information extraction (Jia et al., 2022).

Hypergraph neural network Hypergraph neural network (HyperGNN) is another way to construct an higher-order model. Traditional Graph Neural Networks employ pairwise connections among nodes, whereas HyperGNNs use a hypergraph structure for data modeling. Feng et al. (2019) and Bai et al. (2021) proposed spectral-based HyperGNNs utilizing the normalized hypergraph Laplacian. Arya et al. (2020) is a spatial-based HyperGNN which aggregates messages in a two-stage procedure. Huang and Yang (2021) proposed *UniGNN*, a unified framework for interpreting the message passing process in HyperGNN. Gao et al. (2023) introduced a general high-order multi-modal data correlation modeling framework to learn an optimal representation in a single hypergraph based framework.

7 Conclusion

In this paper, we present HGERE, a joint entity and relation extraction model equipped with a span pruning mechanism and a higher-order interaction module (i.e., HGNN). We found that simply using the span pruning mechanism by itself greatly improve the performance over prior state-of-the-art PL-marker, indicating the existence of the error propagation problem for pipeline methods. We compared our model with prior traditional GNN-

based models which do not contain hyperedges connecting multiple instances and showed the improvement, suggesting that modeling higher-order interactions between multiple instances is beneficial. Finally, we compared our model with the most popular higher-order CRF models with MFVI and showed the advantages of HGNN in higher-order modeling.

Limitations

Our model achieves a significant improvement in most cases (on ACE2004, SciERC datasets and on ACE2005 with Bert_{base}). While on ACE2005 with stronger encoder (e.g., ALBERT) we observe less significant improvements. We posit that, with powerful encoders, the recall of gold entity spans would increase, thereby mitigating the error propagation issue and diminishing the benefit of using a span pruning mechanism.

Another concern regarding our model is computational efficiency. The time complexity of the *Subject-oriented Packing for Span Pair* encoding scheme from PL-marker grows linearly with the size of candidate span size. Recall that we over-predict many spans using a span pruning mechanism, which slows down the running time. In practice, our model’s running time is around as three times as that of PL-marker.

Acknowledgments

This work was supported by the National Natural Science Foundation of China (61976139).

References

- Devanshu Arya, Deepak K Gupta, Stevan Rudinac, and Marcel Worring. 2020. Hypersage: Generalizing inductive representation learning on hypergraphs. *arXiv preprint arXiv:2010.04558*.
- Song Bai, Feihu Zhang, and Philip HS Torr. 2021. Hypergraph convolution and hypergraph attention. *Pattern Recognition*, 110:107637.
- Livio Baldini Soares, Nicholas FitzGerald, Jeffrey Ling, and Tom Kwiatkowski. 2019. [Matching the blanks: Distributional similarity for relation learning](#). In *Proceedings of the 57th Annual Meeting of the Association for Computational Linguistics*, pages 2895–2905, Florence, Italy. Association for Computational Linguistics.
- Iz Beltagy, Kyle Lo, and Arman Cohan. 2019. [SciBERT: A pretrained language model for scientific text](#). In *Proceedings of the 2019 Conference on Empirical*

- Methods in Natural Language Processing and the 9th International Joint Conference on Natural Language Processing (EMNLP-IJCNLP)*, pages 3615–3620, Hong Kong, China. Association for Computational Linguistics.
- Chen Cai and Yusu Wang. 2020. A note on over-smoothing for graph neural networks. *ArXiv*, abs/2006.13318.
- Yee Seng Chan and Dan Roth. 2011. [Exploiting syntactico-semantic structures for relation extraction](#). In *Proceedings of the 49th Annual Meeting of the Association for Computational Linguistics: Human Language Technologies*, pages 551–560, Portland, Oregon, USA. Association for Computational Linguistics.
- Jacob Devlin, Ming-Wei Chang, Kenton Lee, and Kristina Toutanova. 2019. [BERT: Pre-training of deep bidirectional transformers for language understanding](#). In *Proceedings of the 2019 Conference of the North American Chapter of the Association for Computational Linguistics: Human Language Technologies, Volume 1 (Long and Short Papers)*, pages 4171–4186, Minneapolis, Minnesota. Association for Computational Linguistics.
- George Doddington, Alexis Mitchell, Mark Przybocki, Lance Ramshaw, Stephanie Strassel, and Ralph Weischedel. 2004. [The automatic content extraction \(ACE\) program – tasks, data, and evaluation](#). In *Proceedings of the Fourth International Conference on Language Resources and Evaluation (LREC'04)*, Lisbon, Portugal. European Language Resources Association (ELRA).
- Timothy Dozat and Christopher D. Manning. 2016. Deep biaffine attention for neural dependency parsing. *ArXiv*, abs/1611.01734.
- Markus Eberts and Adrian Ulges. 2020. [Span-based joint entity and relation extraction with transformer pre-training](#). In *ECAI 2020 - 24th European Conference on Artificial Intelligence, 29 August-8 September 2020, Santiago de Compostela, Spain, August 29 - September 8, 2020 - Including 10th Conference on Prestigious Applications of Artificial Intelligence (PAIS 2020)*, volume 325 of *Frontiers in Artificial Intelligence and Applications*, pages 2006–2013. IOS Press.
- Yifan Feng, Haoxuan You, Zizhao Zhang, Rongrong Ji, and Yue Gao. 2019. Hypergraph neural networks. In *Proceedings of the AAAI conference on artificial intelligence*, volume 33, pages 3558–3565.
- Tsu-Jui Fu, Peng-Hsuan Li, and Wei-Yun Ma. 2019. [GraphRel: Modeling text as relational graphs for joint entity and relation extraction](#). In *Proceedings of the 57th Annual Meeting of the Association for Computational Linguistics*, pages 1409–1418, Florence, Italy. Association for Computational Linguistics.
- Yue Gao, Yifan Feng, Shuyi Ji, and Rongrong Ji. 2023. [Hgnn+: General hypergraph neural networks](#). *IEEE Transactions on Pattern Analysis and Machine Intelligence*, 45(3):3181–3199.
- Pankaj Gupta, Hinrich Schütze, and Bernt Andrassy. 2016. [Table filling multi-task recurrent neural network for joint entity and relation extraction](#). In *Proceedings of COLING 2016, the 26th International Conference on Computational Linguistics: Technical Papers*, pages 2537–2547, Osaka, Japan. The COLING 2016 Organizing Committee.
- Chenqing Hua. 2022. Graph neural networks intersect probabilistic graphical models: A survey. *ArXiv*, abs/2206.06089.
- Jing Huang and Jie Yang. 2021. [Unignn: a unified framework for graph and hypergraph neural networks](#). In *Proceedings of the Thirtieth International Joint Conference on Artificial Intelligence, IJCAI-21*, pages 2563–2569. International Joint Conferences on Artificial Intelligence Organization. Main Track.
- Zixia Jia, Zhaohui Yan, Wenjuan Han, Zilong Zheng, and Kewei Tu. 2022. Joint information extraction with cross-task and cross-instance high-order modeling. *ArXiv*, abs/2212.08929.
- Arzoo Katiyar and Claire Cardie. 2017. [Going out on a limb: Joint extraction of entity mentions and relations without dependency trees](#). In *Proceedings of the 55th Annual Meeting of the Association for Computational Linguistics (Volume 1: Long Papers)*, pages 917–928, Vancouver, Canada. Association for Computational Linguistics.
- Jonathan Kuck, Shuvam Chakraborty, Hao Tang, Rachel Luo, Jiaming Song, Ashish Sabharwal, and Stefano Ermon. 2020. [Belief propagation neural networks](#). In *Advances in Neural Information Processing Systems 33: Annual Conference on Neural Information Processing Systems 2020, NeurIPS 2020, December 6-12, 2020, virtual*.
- Zhenzhong Lan, Mingda Chen, Sebastian Goodman, Kevin Gimpel, Piyush Sharma, and Radu Soricut. 2020. [ALBERT: A lite BERT for self-supervised learning of language representations](#). In *8th International Conference on Learning Representations, ICLR 2020, Addis Ababa, Ethiopia, April 26-30, 2020*. OpenReview.net.
- Zuchao Li, Hai Zhao, Rui Wang, and Kevin Parnow. 2020. [High-order semantic role labeling](#). In *Findings of the Association for Computational Linguistics: EMNLP 2020*, pages 1134–1151, Online. Association for Computational Linguistics.
- Tianyu Liu, Yuchen Eleanor Jiang, Nicholas Monath, Ryan Cotterell, and Mrinmaya Sachan. 2022. [Autoregressive structured prediction with language models](#). In *Findings of the Association for Computational Linguistics: EMNLP 2022*, pages 993–1005, Abu Dhabi, United Arab Emirates. Association for Computational Linguistics.

- Yaojie Lu, Qing Liu, Dai Dai, Xinyan Xiao, Hongyu Lin, Xianpei Han, Le Sun, and Hua Wu. 2022. [Unified structure generation for universal information extraction](#). In *Proceedings of the 60th Annual Meeting of the Association for Computational Linguistics (Volume 1: Long Papers)*, pages 5755–5772, Dublin, Ireland. Association for Computational Linguistics.
- Yi Luan, Luheng He, Mari Ostendorf, and Hannaneh Hajishirzi. 2018. [Multi-task identification of entities, relations, and coreference for scientific knowledge graph construction](#). In *Proceedings of the 2018 Conference on Empirical Methods in Natural Language Processing*, pages 3219–3232, Brussels, Belgium. Association for Computational Linguistics.
- Makoto Miwa and Mohit Bansal. 2016. [End-to-end relation extraction using LSTMs on sequences and tree structures](#). In *Proceedings of the 54th Annual Meeting of the Association for Computational Linguistics (Volume 1: Long Papers)*, pages 1105–1116, Berlin, Germany. Association for Computational Linguistics.
- Makoto Miwa and Yutaka Sasaki. 2014. [Modeling joint entity and relation extraction with table representation](#). In *Proceedings of the 2014 Conference on Empirical Methods in Natural Language Processing (EMNLP)*, pages 1858–1869, Doha, Qatar. Association for Computational Linguistics.
- Minh Van Nguyen, Viet Dac Lai, and Thien Huu Nguyen. 2021. [Cross-task instance representation interactions and label dependencies for joint information extraction with graph convolutional networks](#). In *Proceedings of the 2021 Conference of the North American Chapter of the Association for Computational Linguistics: Human Language Technologies*, pages 27–38, Online. Association for Computational Linguistics.
- Giovanni Paolini, Ben Athiwaratkun, Jason Krone, Jie Ma, Alessandro Achille, RISHITA ANUBHAI, Cicero Nogueira dos Santos, Bing Xiang, and Stefano Soatto. 2021. [Structured prediction as translation between augmented natural languages](#). In *International Conference on Learning Representations*.
- Meng Qu, Huiyu Cai, and Jian Tang. 2022. [Neural structured prediction for inductive node classification](#). In *International Conference on Learning Representations*.
- Victor Garcia Satorras and Max Welling. 2021. [Neural enhanced belief propagation on factor graphs](#). In *The 24th International Conference on Artificial Intelligence and Statistics, AISTATS 2021, April 13-15, 2021, Virtual Event*, volume 130 of *Proceedings of Machine Learning Research*, pages 685–693. PMLR.
- Yongliang Shen, Xinyin Ma, Yechun Tang, and Weiming Lu. 2021. [A trigger-sense memory flow framework for joint entity and relation extraction](#). In *Proceedings of the web conference 2021*, pages 1704–1715.
- Changzhi Sun, Yeyun Gong, Yuanbin Wu, Ming Gong, Daxin Jiang, Man Lan, Shiliang Sun, and Nan Duan. 2019. [Joint type inference on entities and relations via graph convolutional networks](#). In *Proceedings of the 57th Annual Meeting of the Association for Computational Linguistics*, pages 1361–1370, Florence, Italy. Association for Computational Linguistics.
- David Wadden, Ulme Wennberg, Yi Luan, and Hannaneh Hajishirzi. 2019. [Entity, relation, and event extraction with contextualized span representations](#). In *Proceedings of the 2019 Conference on Empirical Methods in Natural Language Processing and the 9th International Joint Conference on Natural Language Processing (EMNLP-IJCNLP)*, pages 5784–5789, Hong Kong, China. Association for Computational Linguistics.
- Christopher Walker, Stephanie Strassel, Julie Medero, and Kazuaki Maeda. 2006. [Ace 2005 multilingual training corpus](#). Linguistic Data Consortium.
- Jue Wang and Wei Lu. 2020. [Two are better than one: Joint entity and relation extraction with table-sequence encoders](#). In *Proceedings of the 2020 Conference on Empirical Methods in Natural Language Processing (EMNLP)*, pages 1706–1721, Online. Association for Computational Linguistics.
- Xinyu Wang, Jingxian Huang, and Kewei Tu. 2019. [Second-order semantic dependency parsing with end-to-end neural networks](#). In *Proceedings of the 57th Annual Meeting of the Association for Computational Linguistics*, pages 4609–4618, Florence, Italy. Association for Computational Linguistics.
- Xinyu Wang and Kewei Tu. 2020. [Second-order neural dependency parsing with message passing and end-to-end training](#). In *Proceedings of the 1st Conference of the Asia-Pacific Chapter of the Association for Computational Linguistics and the 10th International Joint Conference on Natural Language Processing*, pages 93–99, Suzhou, China. Association for Computational Linguistics.
- Yijun Wang, Changzhi Sun, Yuanbin Wu, Hao Zhou, Lei Li, and Junchi Yan. 2021. [UniRE: A unified label space for entity relation extraction](#). In *Proceedings of the 59th Annual Meeting of the Association for Computational Linguistics and the 11th International Joint Conference on Natural Language Processing (Volume 1: Long Papers)*, pages 220–231, Online. Association for Computational Linguistics.
- Chaojun Xiao, Yuan Yao, Ruobing Xie, Xu Han, Zhiyuan Liu, Maosong Sun, Fen Lin, and Leyu Lin. 2020. [Denoising relation extraction from document-level distant supervision](#). In *Proceedings of the 2020 Conference on Empirical Methods in Natural Language Processing (EMNLP)*, pages 3683–3688, Online. Association for Computational Linguistics.
- Zhaohui Yan, Zixia Jia, and Kewei Tu. 2022. [An empirical study of pipeline vs. joint approaches to entity and relation extraction](#). In *Proceedings of the 2nd*

- Conference of the Asia-Pacific Chapter of the Association for Computational Linguistics and the 12th International Joint Conference on Natural Language Processing (Volume 2: Short Papers)*, pages 437–443, Online only. Association for Computational Linguistics.
- Zhiheng Yan, Chong Zhang, Jinlan Fu, Qi Zhang, and Zhongyu Wei. 2021. [A partition filter network for joint entity and relation extraction](#). In *Proceedings of the 2021 Conference on Empirical Methods in Natural Language Processing*, pages 185–197, Online and Punta Cana, Dominican Republic. Association for Computational Linguistics.
- Songlin Yang and Kewei Tu. 2022. [Combining \(second-order\) graph-based and headed-span-based projective dependency parsing](#). In *Findings of the Association for Computational Linguistics: ACL 2022*, pages 1428–1434, Dublin, Ireland. Association for Computational Linguistics.
- Deming Ye, Yankai Lin, Peng Li, and Maosong Sun. 2022. [Packed levitated marker for entity and relation extraction](#). In *Proceedings of the 60th Annual Meeting of the Association for Computational Linguistics (Volume 1: Long Papers)*, pages 4904–4917, Dublin, Ireland. Association for Computational Linguistics.
- KiJung Yoon, Renjie Liao, Yuwen Xiong, Lisa Zhang, Ethan Fetaya, Raquel Urtasun, Richard S. Zemel, and Xaq Pitkow. 2018. [Inference in probabilistic graphical models by graph neural networks](#). In *6th International Conference on Learning Representations, ICLR 2018, Vancouver, BC, Canada, April 30 - May 3, 2018, Workshop Track Proceedings*. OpenReview.net.
- Dmitry Zelenko, Chinatsu Aone, and Anthony Richardella. 2003. Kernel methods for relation extraction. *Journal of machine learning research*, 3(Feb):1083–1106.
- Meishan Zhang, Yue Zhang, and Guohong Fu. 2017. [End-to-end neural relation extraction with global optimization](#). In *Proceedings of the 2017 Conference on Empirical Methods in Natural Language Processing*, pages 1730–1740, Copenhagen, Denmark. Association for Computational Linguistics.
- Yu Zhang, Zhenghua Li, and Min Zhang. 2020a. [Efficient second-order TreeCRF for neural dependency parsing](#). In *Proceedings of the 58th Annual Meeting of the Association for Computational Linguistics*, pages 3295–3305, Online. Association for Computational Linguistics.
- Zhen Zhang, Fan Wu, and Wee Sun Lee. 2020b. [Factor graph neural networks](#). In *Neural Information Processing Systems*.
- Shuai Zheng, Sadeep Jayasumana, Bernardino Romera-Paredes, Vibhav Vineet, Zhizhong Su, Dalong Du, Chang Huang, and Philip H. S. Torr. 2015a. [Conditional random fields as recurrent neural networks](#). In *2015 IEEE International Conference on Computer Vision, ICCV 2015, Santiago, Chile, December 7-13, 2015*, pages 1529–1537. IEEE Computer Society.
- Shuai Zheng, Sadeep Jayasumana, Bernardino Romera-Paredes, Vibhav Vineet, Zhizhong Su, Dalong Du, Chang Huang, and Philip HS Torr. 2015b. [Conditional random fields as recurrent neural networks](#). In *Proceedings of the IEEE international conference on computer vision*, pages 1529–1537.
- Zexuan Zhong and Danqi Chen. 2021. [A frustratingly easy approach for entity and relation extraction](#). In *Proceedings of the 2021 Conference of the North American Chapter of the Association for Computational Linguistics: Human Language Technologies*, pages 50–61, Online. Association for Computational Linguistics.
- Shilin Zhou, Qingrong Xia, Zhenghua Li, Yu Zhang, Yu Hong, and Min Zhang. 2022. [Fast and accurate end-to-end span-based semantic role labeling as word-based graph parsing](#). In *Proceedings of the 29th International Conference on Computational Linguistics*, pages 4160–4171, Gyeongju, Republic of Korea. International Committee on Computational Linguistics.

A Appendix

A.1 Datasets

We use ACE2004, ACE2005 and SciERC datasets in our experiments, the data statistics of each dataset is shown in Table 6.

	#sent	#entity	#relation
ACE2004	8683	22735	4087
ACE2005	14525	38287	7070
SciERC	2687	8094	4648

Table 6: The statistic of datasets

A.2 Bidirectional prediction of RE

Following previous work (Eberts and Ulges, 2020; Ye et al., 2022), we establish an inverse relation for each asymmetric relation for a bidirectional prediction. The model can learn the inverse relations of asymmetric relations and improve the performance in this way.

A.3 Implementation details

We adopt the same cross-sentence information incorporating method used in (Zhong and Chen, 2021; Ye et al., 2022) which extend the original sentence to a fixed window size W with its left and right context. We set $W = 512$ for SciERC, $W = 384$ for ACE2004 and $W = 256$ for ACE2005. For

the pruner training and inference, we consider the span length limitation L of 12 for SciERC and 8 for ACE2004 and ACE2005. For pruners of any datasets and PLMs, the top-K ratio $\lambda = 0.5$, the boundaries of K are $l_{\min} = 3, l_{\max} = 18$. We use three hypergraph convolution layers for GCN, MFVI and HGERE. As the entity recall is high enough, pruners use on ACE2004 and ACE2005 are only trained with BERT_B. For all experiments, we run each configuration with 5 different seeds and report the average micro-F1 scores and standard deviation.

For the pruner, the output sizes of FFN_{ST}, FFN_{ED} and FFN_q are $d_m = 768$, the bi-affine embedding size $d_{\text{biaf}} = 256$, the output size of FFN_{attn} is 256.

For the backbone module, the output sizes of FFN_s, FFN_o and FFN_r are tuned on [400, 512, 768] for all datasets.

For the hypergraph neural network, the output sizes of FFN_r^{ter}, FFN_s^{ter}, FFN_o^{ter}, FFN_a^z, FFN_b^z are tuned among [256, 400, 512] and fixed on 400 for all experiments on SciERC. The output sizes of FFN_e^{ter}, FFN_e^z are tune on [256, 400, 512, 768] for all experiments. For GCN, MFVI and HGERE, we all use three layers to refine the node representations. We train our models with Adam optimizer and a liner scheduler with warmup ratio of 0.1. We tune the eps of Adam optimizer on [1e-8, 1e-9] for ACE2005, and eps=1e-8 for other datasets. The batch size of all experiments are 18. The learning rate of PLM are 2e-5, for other module the learning rate is tune on [5e-5, 1e-4]. The epochs on SciERC for Backbone are 20, and 30 for other models. The epochs on ACE2004 and ACE2005 (BERT_B) are 15, on ACE2004 and ACE2005 (ALBERT) are 10. We do all experiments on a A40 GPU with apex fp16 training option on.

A.4 Details of the span pruner

We obtain contextualized representations of the tokens \mathbf{x} and levitated marker representations \mathbf{x}_s (for $[O]$) and \mathbf{x}_e (for $[\setminus O]$). Then we concatenate two kinds of span representations—bi-affine (Dozat and Manning, 2016) and attentive pooling—as the final one. For a span s_i consisting of tokens $x_{\text{ST}(i)}, \dots, x_{\text{ED}(i)}$, its bi-affine span representation

is a d_{biaf} -dimension vector,

$$\begin{aligned} \mathbf{h}_{\text{ST}}(s_i) &= \text{FFN}_{\text{ST}}(\mathbf{x}_{\text{ST}(i)}; \mathbf{x}_s(i)) \\ \mathbf{h}_{\text{ED}}(s_i) &= \text{FFN}_{\text{ED}}(\mathbf{x}_{\text{ED}(i)}; \mathbf{x}_e(i)) \\ \mathbf{h}_{\text{biaf}}(s_i) &= [\mathbf{h}_{\text{ST}}(s_i); 1]^\top W_p [\mathbf{h}_{\text{ED}}(s_i); 1] \end{aligned}$$

the symbol $;$ is the concatenation operation, FFN_{ST} and FFN_{ED} are feed-forward layers with an output size d_m and $W_p \in \mathbb{R}^{(d_m+1)*d_{\text{biaf}}*(d_m+1)}$ is a learn-able weight. The attentive pooling layer is a weighted average over the contextualize token representations in the span,

$$\begin{aligned} w_j &= \text{FFN}_q(\mathbf{x}_j); w_j = \frac{\exp w_j}{\sum_{\text{ST}(i) \leq l \leq \text{ED}(i)} \exp w_l} \\ \mathbf{h}_{\text{attn}}(s_i) &= \sum_{\text{ST}(i) \leq j \leq \text{ED}(i)} w_j \mathbf{x}_j \end{aligned}$$

and the final span representation is,

$$\mathbf{h}(s_i) = \text{FFN}_{\text{attn}}[\mathbf{h}_{\text{biaf}}(s_i); \mathbf{h}_{\text{attn}}(s_i)]$$

Training and Inference Given the gold binary tag $y(s_i) \in \{0, 1\}$ (indicating the existence of a candidate span in the gold span set), we train the span pruner with the binary cross-entropy (BCE) loss:

$$\hat{y}(s_i) = \text{Sigmoid}(\text{FFN}(\mathbf{h}(s_i)))$$

$$\begin{aligned} L = - \sum_{1 \leq i \leq m} & [y(s_i) \log \hat{y}(s_i) \\ & + (1 - y(s_i))(1 - \log \hat{y}(s_i))] \end{aligned}$$

A.5 Mean-field Variant Inference

Here we introduce the method used in baseline MFVI. The hyperedges in our graph are replaced by factors in MFVI, so there are also four kinds of factors: *ter*, *sib*, *cop*, *gp*.

first-order scores We use the node representations to score the entities and relations for each label (include the null).

$$\begin{aligned} \mathbf{u}_i^s &= \text{FFN}_s^u(\mathbf{g}(v_s^i)) \\ \mathbf{u}_j^o &= \text{FFN}_o^u(\mathbf{g}(v_o^j)) \\ \mathbf{u}_{ij}^r &= \text{FFN}_r^u(\mathbf{g}(v_r^{ij})) \end{aligned}$$

$$\mathbf{u}^s, \mathbf{u}^o \in R^{|\mathcal{C}_e|+1}, \mathbf{u}^r \in R^{|\mathcal{C}_r|+1}.$$

Higher-order scores Each factor scores the joint distribution of the node types connected to it. For a *ter* factor connects a subject v_s^i , an object v_o^j and a relation v_r^{ij} , the factor score $\mathbf{f}_{ij}^{ter} \in R^{|\mathcal{C}_e+1|^2|\mathcal{C}_r+1|}$ is:

$$\begin{aligned}\mathbf{h}_i^s &= \text{FFN}_s^{ter}(\mathbf{g}(v_s^i)) \\ \mathbf{h}_j^o &= \text{FFN}_o^{ter}(\mathbf{g}(v_o^j)) \\ \mathbf{h}_{ij}^r &= \text{FFN}_r^{ter}(\mathbf{g}(v_r^{ij})) \\ \mathbf{f}_{ij}^{ter} &= \text{FFN}_f^{ter}(\mathbf{h}_i^s \circ \mathbf{h}_j^o \circ \mathbf{h}_{ij}^r)\end{aligned}$$

For a factor $z, z \in \{sib, cop, gp\}$ which connects two relations, we name them relation a and b for simplicity. If relation a is v_r^{ij} , then relation b is v_r^{ik}, v_r^{kj} and v_r^{jk} for *sib*, *cop* and *gp* respectively. We use $\mathbf{g}(a), \mathbf{g}(b)$ to refer to the relation representations of relations a and b . The factor score $\mathbf{f}_{ijk}^z \in R^{|\mathcal{C}_r+1|^2}$ is defined as:

$$\begin{aligned}\mathbf{h}_a &= \text{FFN}_s^{ter}(\mathbf{g}(a)) \\ \mathbf{h}_b &= \text{FFN}_o^{ter}(\mathbf{g}(b)) \\ \mathbf{f}_{ijk}^z &= \text{FFN}_f^{ter}(\mathbf{h}_a \circ \mathbf{h}_b)\end{aligned}$$

higher-order inference In the model, computing the node distribution can be seen as doing posterior inference on a Conditional Random Field (CRF). MFVI iteratively updates a factorized variational distribution Q to approximate the posterior label distribution. We use $Q_{s_i}(e_1), Q_{o_j}(e_2)$ to refer to the probability of subject v_s^i and object v_o^j has entity type e_1 and e_2 respectively and $Q_{r_{ij}}(r)$ represents the relation v_r^{ij} has the relation type r . For simplicity, we use $u_i^s(e_1), u_j^o(e_2), u_{ij}^r(r_1), f_{ij}^{ter}(e_1, e_2, r_1), f_{ijk}^z(r_1, r_2)$ to represent the first-order and higher-order scores when the subject v_s^i , the object v_o^j have entity type e_1, e_2 , the relation $a(v_r^{ij})$, the relation b have relation types r_1, r_2 respectively. Following is the iteratively updating of the distribution Q_s, Q_o, Q_r . For a subject v_s^i . The message only passed from *ter* factor in the l -th iteration is:

$$F_{s_i}^l(e_1) = \sum_j \sum_{e_2} Q_{o_j}^{l-1}(e_2) \left(\sum_{l_1} Q_{r_{ij}}^{l-1}(r_1) f_{ij}^{ter}(e_1, e_2, r_1) \right)$$

similarly, the message passed from *ter* factor to the object v_o^j is:

$$F_{o_j}^l(e_2) = \sum_i \sum_{e_1} Q_{s_i}^{l-1}(e_1) \left(\sum_{l_1} Q_{r_{ij}}^{l-1}(r_1) f_{ij}^{ter}(e_1, e_2, r_1) \right)$$

For a relation v_r^{ij} , the message could be passed from four factors, we list them by the source. From *ter* factor:

$$T_{r_{ij}}^l(r_1) = \sum_{e_1} \sum_{e_2} Q_{s_i}^{l-1}(e_1) Q_{o_j}^{l-1}(e_2) f_{ij}^{ter}(e_1, e_2, r_1)$$

From *sib* factor:

$$S_{r_{ij}}^l(r_1) = \sum_k \sum_{r_2} Q_{r_{ik}}^{l-1}(r_2) (f_{ijk}^{sib}(r_1, r_2) + f_{ikj}^{sib}(r_2, r_1))$$

From the *cop* factor:

$$C_{r_{ij}}^l(r_1) = \sum_k \sum_{r_2} Q_{r_{kj}}^{l-1}(r_2) (f_{ijk}^{cop}(r_1, r_2) + f_{kji}^{cop}(r_2, r_1))$$

From the *gp* factor:

$$G_{r_{ij}}^l(r_1) = \sum_k \sum_{r_2} (Q_{r_{jk}}^{l-1}(r_2) f_{ijk}^{gp}(r_1, r_2) + Q_{r_{ki}}^{l-1}(r_2) f_{kij}^{gp}(r_2, r_1))$$

The posterior distribution of entity e_i with respect to the subject s_i and object o_i :

$$\begin{aligned}Q_{s_i}^l(e) &\propto \exp(u_i^s(e) + F_{s_i}^l(e)) \\ Q_{o_j}^l(e) &\propto \exp(u_j^o(e) + F_{o_j}^l(e))\end{aligned}$$

Then the entity distribution is : $Q_{s_i}^l + Q_{o_i}^l$

We initial the Q of subject v_s^i , object v_o^j , the relation v_r^{ij} by normalizing the unary potential $\exp(u_i^s), \exp(u_j^o), \exp(u_{ij}^r)$ respectively. The posterior distribution of the relation r_{ij} is:

$$Q_{r_{ij}}^l(r) \propto \exp(u_{ij}^r(r) + \mathbb{1}_{ter} T_{r_{ij}}^l(r) + \mathbb{1}_{sib} S_{r_{ij}}^l(r) + \mathbb{1}_{cop} C_{r_{ij}}^l(r) + \mathbb{1}_{gp} G_{r_{ij}}^l(r))$$

The symbol $\mathbb{1}_z, z \in \{ter, sib, cop, gp\}$ indicates whether the factor z exists in the graph.

A.6 GCN

Here is the introduction of the baseline GCN. As in HGERE, we also build the graph $\mathcal{G} = (\mathcal{V}, \mathcal{E})$ with subject, object and relation nodes, $\mathcal{V} = \mathcal{V}_s \cup \mathcal{V}_o \cup \mathcal{V}_r$. For each relation node $v_r^{ij} \in \mathcal{V}_r$, we build two edges connecting its subject node $v_s^i \in \mathcal{V}_s$ and object node $v_o^j \in \mathcal{V}_o$ respectively. the

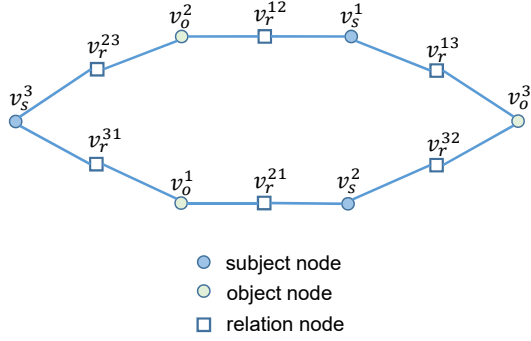


Figure 3: Illustration of an example graph of GCN

model use l convolution layers to update the node representations. We define the neighbor set $\mathcal{N}(v)$ of a node v is the nodes connected to it. The node representation update of l -th layer is as follow:

$$\beta^l(v_1, v) = \mathbf{w}^\top \sigma(\mathbf{W}[\mathbf{g}^{l-1}(v_1); \mathbf{m}^{l-1}(v)])$$

$$\alpha^l(v_1, v) = \frac{\exp \beta^l(v_1, v)}{\sum_{v_1 \in \mathcal{N}(v)} \exp \beta^l(v_1, v)}$$

$$\mathbf{g}^l(v) = \mathbf{g}^{l-1}(v) + \sum_{v_1 \in \mathcal{N}(v)} \alpha(v_1, v) \mathbf{g}^{l-1}(v_1)$$

A.7 Performance with part of the training data

ratio	model	ACE2005 (BERT _B)		
		Ent	Rel	Rel+
5%	Backbone	80.4	39.7	36.0
	HGERE	79.5	42.0	38.1
10%	Backbone	83.9	51.3	47.2
	HGERE	84.2	53.3	49.4
100%	Backbone	90.0	69.8	66.7
	HGERE	90.2	70.1	67.3

Table 7: F1 score of HGERE on ACE2005 test set when only provide 5% and 10% training samples.

From the main results, we can see that the HGERE shows a significantly greater improvement in performance compared to the Backbone model on the SciERC dataset than on the ACE2005 dataset. We guess one of the reason is the size of the training data. Because with more training data, models could learn enough knowledge from a large number of samples and reduce the demand of higher-order information. So we compare HGERE to Backbone with 5% and 10% of training data on the ACE2005 (BERT_B) to see if higher-order inference is more effectiveness with small training data. From the

	SciERC		
	Ent	Rel	Rel+
max	74.0	54.7	41.4
sum	73.6	54.5	41.5
attn	74.9	55.7	43.6

Table 8: F1 scores of HGERE (the *tersibcop* variant) with different aggregation functions on the SciERC test set.

results shown in Table 7 we can see that the increments of absolute F1 score on Rel+ metric from Backbone to HGERE are 2.1%, 2.2% on 5% and 10% of training set respectively, which are much higher than 0.6% on full training set.

A.8 Effect of the number of HGNN layers

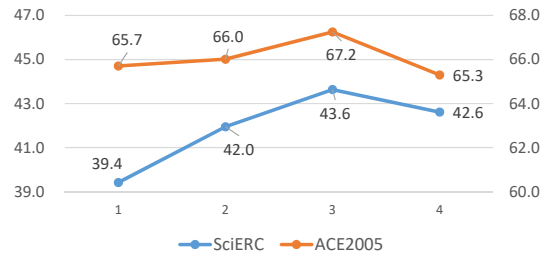


Figure 4: The change of F1 scores with respect to the number of HGNN layers .

From Fig.4 we can see that using three HGNN layers performs the best while more layers lead to worse results. We posit that this is because using more HGNN layers would suffer from the well-known over-smoothing problem (Cai and Wang, 2020).

A.9 Effect of the aggregation function in message passing

We study the influence of using different message aggregation functions. HGERE uses an attention mechanism (attn) to update node representations while it is also possible to use max-pooling (max) or sum-pooling (sum). Table 8 shows that attn performs the best.