
SatDiffMoE: A Mixture of Estimation Method for Satellite Image Super-resolution with Latent Diffusion Models

Zhaoxu Luo^{*1} Bowen Song^{*1} Liyue Shen¹

Abstract

During the acquisition of satellite images, there is generally a trade-off between spatial resolution and temporal resolution (acquisition frequency) due to the onboard sensors of satellite imaging systems. With the advent of diffusion models, we can now learn strong generative priors to generate realistic satellite images with high resolution, which can be utilized to promote the super-resolution task as well. In this work, we propose a novel diffusion-based fusion algorithm called **SatDiffMoE** that can take an arbitrary number of sequential low-resolution satellite images at the same location as inputs, and fuse them into one high-resolution reconstructed image with more fine details, by leveraging and fusing the complementary information from different time points. Our algorithm is highly flexible and allows training and inference on arbitrary number of low-resolution images. Experimental results show that our proposed SatDiffMoE method not only achieves superior performance for the satellite image super-resolution tasks on a variety of datasets, but also gets an improved computational efficiency with reduced model parameters, compared with previous methods.

1. Introduction

Satellite imaging is a very useful technique for monitoring the natural phenomena and human activities on the surfaces of the Earth. Lots of applications rely on satellite images such as crop monitoring, weather forecasting, urban planning, wildfire management and so on (Khanna et al., 2024;

Burke et al., 2021; Ayush et al., 2020; 2021; Beck et al., 2007; Wang et al., 2018a; M Rustowicz et al., 2019; Li et al., 2019). However, the acquisition of satellite images can be very expensive and the spatial and temporal resolution (the frequency that a satellite image is captured) may be limited due to the physical constraints of sensors (Khanna et al., 2024). In addition, the high temporal resolution may come with trade-off in spatial resolution. Recent advance in satellite imaging technology enables us to capture the same area with a high-revisit frequency, but the spatial resolution is often limited. For instance, two Sentinel-2 satellites with resolutions from 10m to 60m can capture all land surfaces every five days (Cornebise et al., 2022; Cong et al., 2022; Tarasiewicz et al., 2023; Van Etten et al., 2018), but to perform land crop monitoring or wildfire management, this resolution is not sufficient. On the other hand, some very high-resolution satellite images such as SPOT6 or WorldView can have resolution better than 1.5m (Christie et al., 2018), but it is extremely difficult to collect those images for a large area, and these images cannot be captured as frequently as the Sentinel images. The limited temporal resolution severely limits downstream applications in urban planning, object detection, or continuous monitoring of crop or vegetation covers.

To solve the aforementioned challenges, super-resolution algorithms have been introduced to predict the high-resolution (HR) satellite images from a bunch of corresponding low-resolution (LR) satellite images (Luo et al., 2018; 2023), so that to obtain more fine details. For example, given the low-resolution satellite images (10m) from Sentinel-2 of a specific location, the super-resolution algorithms are developed to predict the high-resolution (1.5m) SPOT6 satellite image of the same location at a specific time. Nevertheless, solving remote sensing super-resolution problems is still an open problem. One challenge in remote sensing is that low-resolution and high-resolution images often come from different sensors, and may maintain very different image features due to the large imaging modality gap resulted from different sensors (Luo et al., 2018). Moreover, since the low-resolution and high-resolution images are usually acquired at different time points as demonstrated in Fig. 1, a lot of atmospheric disturbance may pose additional challenges for modeling the sensor imaging process. Therefore, unlike the

^{*}Equal contribution, author ordering decided by a coin flip.

¹University of Michigan. Correspondence to: Zhaoxu Luo <luozhx@umich.edu>, Bowen Song <bowenbw@umich.edu>, Liyue Shen <liyues@umich.edu>.

Accepted by the Workshop on Advancing Neural Network Training (WANT): Computational Efficiency, Scalability, and Resource Optimization of ICML 2024, Vienna, Austria. Copyright 2024 by the author(s).

natural images, in the satellite images, the down-sampling process can be extremely difficult to model.

In order to tackle this challenging task of remote sensing super-resolution, considering that the acquisition of satellite images often comes with multiple revisits (a collection of satellite images at the same location but at different time stamps) or with multiple spectral bands, we hypothesize that fusing multiple low-resolution images with different spectrums or at different time stamps may provide complementary information to the model so as to benefit the super-resolution task. With such motivation, existing works (Cornebise et al., 2022) have introduced a recursive fusion module that takes the concatenated LR images as inputs and applies a residual attention model for outputting the HR image. DiffusionSat (Khanna et al., 2024) introduces a 3D ControlNet architecture that fuses LR images of different spectral bands to reconstruct the corresponding HR image. However, these works require a fixed number of LR images or require an absolute timestamp for each LR and HR, which is often not feasible and flexible at inference time in real practice because it is challenging to find a fixed amount of paired LR images for each HR image.

In this paper, we propose a novel diffusion-based method for solving the satellite image super-resolution problem as demonstrated in Fig. 1. Our contribution can be summarized as below:

- We propose a novel diffusion-based fusion algorithm for satellite image super-resolution that can take an arbitrary number of time series low-resolution (LR) satellite images as input, and fuse their complementary information to reconstruct high-resolution (HR) satellite images with more fine details.
- Specifically, we introduce a new mechanism to train a latent diffusion model using the paired LR and HR images (from the same location but with different time stamps), particularly being aware of the relative time difference between corresponding LR and HR images, to capture the time-aware mapping distribution of LR to HR images
- At inference time, by leveraging the trained time-aware diffusion model, we propose a novel approach to fuse the information from time series LR images, by estimating the center of reverse sampling trajectories of different LR images using a perceptual distance metric, so as to align the semantics from various LR images for super-resolution task.
- We achieve the state-of-the-art performance on a variety of datasets for satellite image super-resolution. Moreover, our method demonstrates an improved computational efficiency with reduced model parameters

compared with previous methods

2. Background

Latent diffusion models Diffusion models consists of a forward process that gradually add noise to a clean image, and a reverse process that denoises the noisy images. The forward model is given by $x_t = x_{t-1} - \frac{\beta_t \Delta t}{2} x_{t-1} + \sqrt{\beta_t} \Delta t \omega$ where $\omega \in N(0, 1)$. When we set $\Delta t \rightarrow 0$, the forward model becomes $dx_t = -\frac{1}{2} \beta_t x_t dt + \sqrt{\beta_t} d\omega_t$, which is a stochastic differential equation. The solution of this SDE is given by

$$dx_t = \left(-\frac{\beta(t)}{2} - \beta(t) \nabla_{x_t} \log p_t(x_t) \right) dt + \sqrt{\beta(t)} d. \quad (1)$$

Thus, by training a neural network to learn the score function $\nabla_{x_t} \log p_t(x_t)$, one can start with noise and run the reverse SDE to obtain samples from the data distribution.

Latent diffusion models (LDM) (Rombach et al., 2022) have been proposed for faster inference and training with a reduced computational burden. By applying an autoencoder to reduce data dimension, LDMs train the diffusion model in a compressed latent space, and then decode the latent code into signals. This method enables high-quality high-resolution image synthesis benefited from its compressed latent space, which is an ideal fit for satellite images due to the large image size. Nevertheless, it is still challenging to perform image restoration accurately with LDMs (Song et al., 2024; Rombach et al., 2022). Various works have tried to extend LDMs for high-dimensional or high-resolution signal synthesis, such as video generation (Blattmann et al., 2023; Yu et al., 2023; Ni et al., 2023; Ho et al., 2022; Ceylan et al., 2023; Martinez et al., 2021; Ruiz et al., 2023; Saharia et al., 2022; Voleti et al., 2022). However, few works apply LDMs for image fusion yet. It is an open problem to sample high-resolution images conditioning on multiple similar low-resolution images with LDMs.

Single-image super-resolution Single-image super-resolution (SISR) focuses on reconstructing the high-resolution image from one corresponding low-resolution image. In the era of deep learning, super-resolution problem has become a popular research question and many data-driven methods have been proposed. In past few years, state-of-the-art methods apply techniques such as Convolutional neural network (CNN), Generative Adversarial Network (GAN), and Transformers for restoring the high-resolution images (Kingma and Welling, 2013; Creswell et al., 2018; Haris et al., 2018; Wang et al., 2018b; Isola et al., 2017; Vaswani et al., 2017). These methods usually learn the mapping from low-resolution image to high-resolution image through a data-driven way using the pair data to train the neural network.

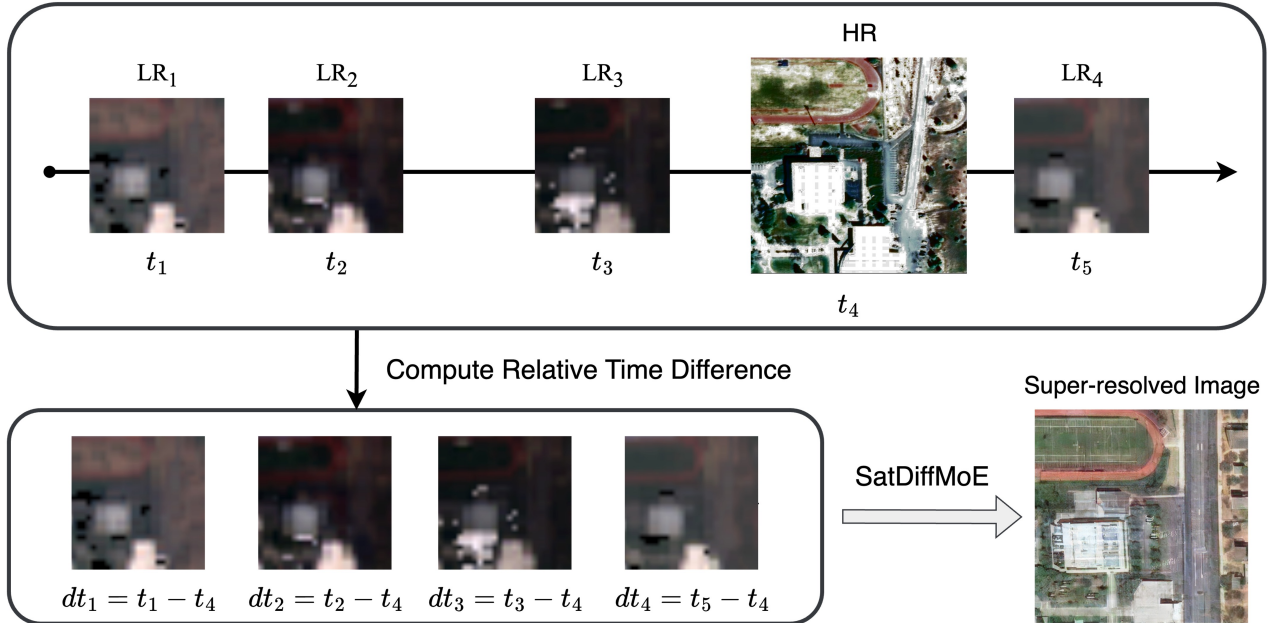


Figure 1. An overview of our proposed method SatDiffMoE.

However, many of these methods output blurry or inaccurate reconstructions since they are learning a direct mapping between LR images and HR images without considering the distribution of possible HR images (Song et al., 2024; 2023). Due to the ill-posedness of the super-resolution problem, there may exist multiple HR images corresponding to one single LR image. A direct regression-based approach may let the network learn an average of all possible HR images, which leads to blurry output. Diffusion models address this issue by learning a strong generative prior that can perform posterior sampling (Chung et al., 2023) instead of direct regression. This sampling method outputs realistic images, and leads to better image perceptual quality. One line of work assumes the degradation operator is known, and focuses on inference-time posterior sampling with the diffusion prior without retraining (Chung et al., 2023; Kawar et al., 2022; Wang et al., 2022; Song et al., 2024; 2021). The other line of work assume the degradation operator is unknown. They concat the LR image into the noise vector or conditional networks and then retrain or fine-tune the diffusion model (Zhang et al., 2023; Khanna et al., 2024). Both lines of work show good ability to model complex high-resolution image distributions and outperform CNN approaches in image perceptual quality. However, all these works focus on obtaining HR images from a single LR image.

Multi-image super-resolution The goal of multi-image super-resolution is to combine the information from mul-

tiple LR images to reconstruct one HR image. In satellite imagery, different sensors have different resolutions. For instance, Sentinel-2 SITS has a resolution of 10-60m, but SPOT-6 or fMoW can have a resolution of less than 1.5m (Khanna et al., 2024). Given sequential low-resolution images collected at the same location but different times, the hypothesis is that performing multi-image super-resolution is able to combine the information of LR images at multiple times to obtain a more accurate and higher-quality HR image. There are a couple of recent works in this venue (Luo et al., 2018; Cornebise et al., 2022; Khanna et al., 2024). For example, Cornebise et al. trained a network with a traditional autoencoder architecture, but modify the encoder to incorporate multiple images as input (Cornebise et al., 2022). HighRes-net (Cornebise et al., 2022) adopted this idea to solve satellite image fusion problem with a network composed of an encoder, a recursive fusion network, and a decoder. However this approach does not include the temporal information of LR images DiffusionSat (Khanna et al., 2024) proposed to train a 3D ControlNet on top of a fine-tuned latent diffusion model that leverages multispectral bands for reconstruction. However, at training, the 3D ControlNet requires the same number of low-resolution images for each paired high-resolution images. In addition, at inference-time, the number of low-resolution images used for reconstruction must be the same as the training set. Motivated by this, essentially different from all these previous works, we aim to propose a more flexible and robust fusion algorithm that can take an arbitrary number of

low-resolution inputs with corresponding time information to generate the high-resolution satellite image.

3. Methods

Instead of conditioning on multiple low-resolution images as a concatenated input (Khanna et al., 2024), we propose a novel fusion algorithm: condition on **each image** and then fuse each score (the output of the conditional diffusion model) into a high-resolution image reconstruction. First, in order to embed the temporal information, we introduce a new method that trains a conditional diffusion model using one LR image and the relative time difference (between the input LR image and the target HR image) as inputs to reconstruct the HR image. Then we propose a novel inference-time algorithm that modifies the intermediate outputs in the reverse sampling procedure based on the assumption that HR reconstruction of LR images at the same location should look similar. Our method is illustrated in Fig. 2.

Training We propose a novel conditioning mechanism for reconstructing HR image from one LR image and its corresponding time difference with the target HR image. Firstly, we utilize Stable Diffusion (Rombach et al., 2022), a pre-trained latent diffusion model for natural image generation, as the backbone model and fine tune the model on satellite images. We also propose a novel method to add additional control to the generating process.

Let HR be the target high-resolution image we want to reconstruct, LR_i denote the i_{th} low-resolution image collected at the same location as the HR image, and dt_i denotes the i_{th} relative time difference between LR_i and HR. We observe that it is possible to train the model on the joint distribution of $p(LR_i, HR)$. However, during inference, the HR image is not available and we can only access the LR images. As a result, let F be the operator that masks out the HR component from the score $s_\theta(LR_i, HR)$, and we propose a training objective:

$$\arg \min_{\theta} \mathbb{E}_{LR_i, HR, t, \epsilon \in N(0,1)} \|F(s_\theta(\text{concat}(\mathcal{E}(LR_i), \mathcal{E}(HR))_t, t) - \epsilon)\|_2^2 \quad (2)$$

where \mathcal{E} is the pretrained image encoder of the LDM, $\text{concat}(\mathcal{E}(LR_i), \mathcal{E}(HR))_t$ is the output of applying the forward process of LDM on the concatenation of LR_i and HR. Through this designed training objective, we do not need to add any additional parameter to the pretrained stable diffusion model, since the stable diffusion model can take arbitrary image resolution as input and output.

Then we propose a novel method that takes the relative time difference dt_i between the LR_i and HR as another conditional input to the LDM. We make a clone of the time

embedding network for the original Stable diffusion model, feed dt_i into the cloned embedding network, and then we add the output from the time embedding and the output from the dt_i embedding together as an overall embedding with positional encoding to the diffusion model. We aim to reconstruct the same HR image regardless of what time LR_i is taken at, so we add this **relative time difference** embedding dt_i to offset the time difference of LR_i and HR. Then the final training objective becomes:

$$\arg \min_{\theta} \mathbb{E}_{LR_i, HR, t, \epsilon \in N(0,1)} \|F(s_\theta(\text{concat}(\mathcal{E}(LR_i), \mathcal{E}(HR))_t, dt_i, t) - \epsilon)\|_2^2 \quad (3)$$

Compared to ControlNet, our proposed model is more computationally efficient with much fewer training parameters. We observe our method also converges much faster than ControlNet and achieves better reconstruction results, which is demonstrated in the experiments section below.

Inference As discussed in the previous subsection, we want to estimate a single HR reconstruction based on LR_i taken at different times. Hence we can assume that the outputs conditioning on different LR_i should be aligned semantically since they are reconstructing the same HR image. Let $z_t(LR_i, dt_i)$ be a noisy sample at time t during diffusion reverse sampling conditioning on LR_i and dt_i . Based on the assumption above, we expect $\mathbb{E}[z_0|z_t(LR_i, dt_i)]$ to be similar for each i_{th} LR. To achieve this, we propose a novel method that firstly finds the center \bar{z}_0 of the vectors of $\mathbb{E}[z_0|z_t(LR_i, dt_i)]$ for all i , and then updates each $z_t(LR_i, dt_i)$, so that $\mathbb{E}[z_0|z_t(LR_i, dt_i)]$ to be closer to the center than without updating.

We can find the desired center via optimization, where d can be a specified distance function, and N is the total number of low-resolution images. Note that N can be different for different HR, which further demonstrates the flexibility of our method. For the distance function, we propose a novel approach that uses a convex combination of l_2 loss and LPIPS loss in order to prevent blurry outputs but still keep images close to each other.

$$\bar{z}_0 = \arg \min_x \sum_{i=1}^N d(x, \mathbb{E}[z_0|z_t(LR_i, dt_i)]) \quad (4)$$

$$d(x, x_i) = (1 - \alpha)\ell_2(x, x_i) + \alpha\text{LPIPS}(x, x_i) \quad (5)$$

where α is the weight for LPIPS loss. Note that for computational efficiency, when computing \bar{z}_0 , we by design choose not to sum up every LR_i , but randomly sample a batch from the set of LR_i to compute the summation. We observe in experiments this random batch selection strategy improves computational efficiency while not sacrificing performance, which may be because of the redundancy information among LR images. Similarly for the computational

Algorithm 1 SatDiffMoE: Satellite Image Fusion with Latent Diffusion Models

Require: i -th low-resolution images LR_i , relative time difference dt_i , $i = 1, \dots, N$, Encoder $\mathcal{E}(\cdot)$, Decoder $\mathcal{D}(\cdot)$, Score function $s_\theta(\cdot, t)$, Pretrained LDM parameters $\beta_t, \bar{\alpha}_t, \eta, \delta$, Hyperparameter λ to control the fusion strength, $d(\cdot)$ the distance function.

```

 $z_T \sim \mathcal{N}(0, I)$  ▷ Initial noise vector
for  $t = T - 1, \dots, 0$  do
     $\epsilon_1 \sim \mathcal{N}(0, I)$ 
     $\hat{\epsilon}_{t+1}^i = s_\theta(z_{t+1}^i, t + 1, \text{LR}_i, dt_i)$  ▷ Compute the score
     $\hat{z}_0^i(z_{t+1}^i) = \frac{1}{\sqrt{\bar{\alpha}_{t+1}}}(z_{t+1}^i - \sqrt{1 - \bar{\alpha}_{t+1}}\hat{\epsilon}_{t+1}^i)$  ▷ Predict  $\hat{z}_0$  using Tweedie's formula
     $\bar{z}_0 \in \underset{z}{\arg\min} \sum_{i=0}^N d(z, \hat{z}_0^i(z_{t+1}^i))$  ▷ Find the center of multiple  $\hat{z}_0$  by optimization
     $\hat{z}_0^i(\text{LR}_i) = (1 - \lambda)\hat{z}_0^i(z_{t+1}^i) + \lambda\bar{z}_0$ 
     $z_t^i = \sqrt{\bar{\alpha}_{t-1}}\hat{z}_0^i(\text{LR}_i) + \sqrt{1 - \bar{\alpha}_{t-1} - \eta\delta^2}\hat{\epsilon}_{t+1}^i + \eta\delta\epsilon_1$  ▷ Update intermediate noisy samples
end for
 $x_0^i = \mathcal{D}(z_0^i)$  ▷ Output reconstructed image
    
```

efficiency, such optimization update is not performed on every time step, but on every k steps. In all of our experiments, we set $k = 5$, which we find from empirical study would suffice the fusion strength while reducing the computational cost.

After obtaining \bar{z}_0 , we propose to update all intermediate samples from the LR_i to be closer to \bar{z}_0 . Recall that in DDIM reverse sampling (Song et al., 2022), the reverse sampling can be decomposed by a clean image component and a noise component. We follow (Chung et al., 2024)'s approach that only updates the clean image component, and leaves the noise component intact. Specifically, let λ be a hyperparameter balancing the original clean image component and \bar{z}_0 , we can update the new clean component as:

$$\hat{z}_0(\text{LR}_i, dt_i) = (1 - \lambda)\mathbb{E}[z_0 | z_t(\text{LR}_i, dt_i)] + \lambda\bar{z}_0 \quad (6)$$

Therefore, the overall reverse sampling step can be written as

$$z_{t-1} = \sqrt{\bar{\alpha}_{t-1}}\hat{z}_0(\text{LR}_i, dt_i) + \sqrt{1 - \bar{\alpha}_{t-1} - \eta\delta_t^2}s_\theta(z_t, \text{LR}_i, dt_i, t) + \eta\delta_t\epsilon, \quad t = T, \dots, 0, \quad (7)$$

The pseudo-code of our proposed algorithm is demonstrated in Alg. 1.

4. Experiments

We try to answer the following questions in this section: (1) Can our proposed method achieve high-quality satellite image super-resolution results by fusing multiple time series low-resolution images? (2) Is our proposed fusion module effective? (3) Can our proposed method be more computationally efficient compared with previous methods? To study these questions, we benchmark the super-resolution performance on two widely used satellite image datasets: the fMoW dataset and the WorldStrat dataset.

4.1. Datasets

WorldStrat We take the paired LR-HR satellite image dataset from (Cornebise et al., 2022). Each area of interest contains a single SPOT 6/7 high-resolution image with five bands. We take the RGB band of the SPOT6/7 satellite images, which has a GSD of 1.5 m/pixel. The low-resolution images are taken from the Sentinel-2 satellites consisting of 13 bands. We only pick the RGB band from them. For each area of interest, we have 16 paired low-resolution images taken at different time. The resolution ranges from 10 m/pixel to 60m per pixel. We crop the high-resolution image into 192x192 patches, and the low-resolution image into 63x63 patches.

fMoW Function Map of the World (fMoW) (Christie et al., 2018) consists of high-resolution (GSD 0.3m-1.5m) satellite images of a variety of categories such as airports, amusement parks, crop fields and so on. However, its temporal resolution is limited due to its high resolution. We use the metadata of timestamp for pairing low-resolution Sentinel-2 images. Using the dataset provided in Cong et al. (2022), we create a fMoWSentinel-fMoW-RGB dataset with paired Sentinel-2 (10m-60m GSD) and fMoW (0.3-1.5m GSD) images at each of the original fMoW-RGB locations. Then, we use the bounding box provided by the metadata to extract relevant areas, and then crop the high-resolution images to patches of 512x512. For each high-resolution fMoW image, we find the corresponding Sentinel-2 images of the same location. We only take the RGB band of Sentinel-2 images and then apply the same cropping method as that for fMoW-RGB images.

4.2. Performance Benchmark

For super-resolution tasks on fMoW and WorldStrat datasets, we report perceptual quality metrics LPIPS to mea-

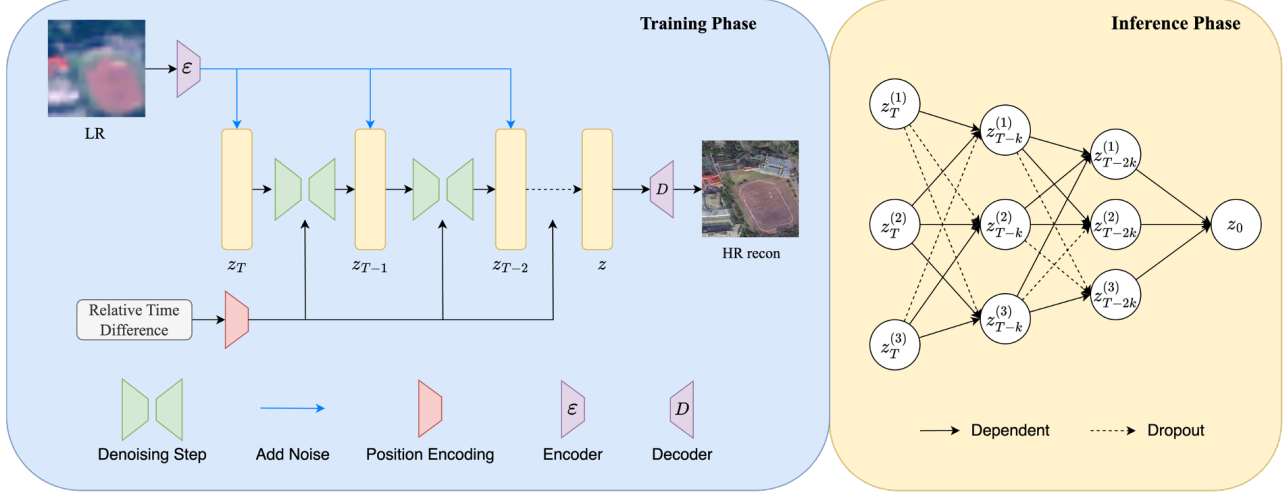


Figure 2. The framework of our proposed SatDiffMoE. In the training phase, we train a latent diffusion model for HR (high-resolution) image conditioning on a single LR (low-resolution) image and its relative time difference with the HR image. Then in the inference phase, we fuse the reverse sampling trajectories conditioning on each LR image of the same location. We can randomly select different trajectories for fusion, but output to a single image at the end.

	Airport	Amusement Park	Car Dealership	Crop Field	Educational Institution	Electric Substation
WorldStrat (Cornebise et al., 2022)	0.723	0.732	0.747	0.738	0.733	0.736
MSRResNet (Wang et al., 2018b)	0.743	0.739	0.733	0.794	0.725	0.783
DBPN (Haris et al., 2018)	0.763	0.740	0.728	0.783	0.726	0.750
Pix2Pix (Isola et al., 2017)	0.621	0.652	0.652	0.645	0.647	0.643
ControlNet (Zhang et al., 2023)	0.625	0.653	0.648	0.650	0.658	0.644
DiffusionSat (Khanna et al., 2024)	0.623	0.647	0.637	0.649	0.652	0.639
SatDiffMoE (Ours)	0.579	0.626	0.600	0.608	0.612	0.606

Table 1. Comparison of the LPIPS metrics for super-resolution on the fMoW dataset for different categories. Best results are in bold.

sure the perceptual similarity of the reconstructed image and the ground truth image, and FID to measure how realistic the reconstruction looks. We also report distortion metrics such as PSNR and SSIM for pixel-level similarity. Note that in satellite images, LPIPS is a more relevant metrics here as it measures the perceptual similarity, as mentioned in (Khanna et al., 2024).

Implementation Details We evaluate our algorithms on WorldStrat and fMoW LR-HR datasets. For each AOI (Area of Interest) of the WorldStrat dataset, we resize each LR image to 192×192 . We fix the prompt to be "Satellite Images" and compute the time difference between the low-resolution image and high-resolution image. Then, we add the time difference embedding network to the stable diffusion 1.2 and then fine-tune the stable diffusion 1.2 on the low-resolution and high-resolution pair of the WorldStrat dataset conditioning on the time difference. For each high-resolution image, we randomly select a low-resolution image from its 16 corresponding low-resolution images for training. After that, we get a latent diffusion model that takes a low-resolution image and the relative time difference as input and output the

predicted high-resolution image. For each AOI of the fMoW dataset, we resize each LR image to 512×512 to align with the size of high-resolution image. We let the prompt to be "Satellite image of **selected class** from a direct overhead view", where **selected class** is the category name. We also use the same time difference embedding network and then fine tune the stable diffusion 1.2. During inference, for both datasets we use 50 NFEs, and then perform optimization every 5 steps. More implementation details can be found in the supplementary materials. For WorldStrat, we evaluate our algorithm on first 1000 images in the validation set. For fMoW, we select the first 100 images in the validation set from 6 classes: Airport, Amusement Park, Car Dealership, Crop Field, Educational Institution, Electric Substation for evaluation.

Baselines We consider six state-of-the-art baselines, WorldStrat (Cornebise et al., 2022), MSRResNet (Wang et al., 2018b), DBPN (Haris et al., 2018), Pix2Pix (Isola et al., 2017), ControlNet (Zhang et al., 2023), and Diffusion-Sat (Khanna et al., 2024). Both ControlNet and Diffusion-Sat are diffusion-based methods that takes LR as an addi-

RelativeTimeDiff	Fusion	PSNR \uparrow	SSIM \uparrow	LPIPS \downarrow	FID \downarrow
		12.52	0.122	0.565	102.3
✓		15.28	0.272	0.496	105.1
✓	✓	17.40	0.396	0.418	88.12

Table 2. Evaluating the Effectiveness of Relative Rime Difference and Fusion.

Number of images for fusion	2	4	6	8	10	12	14	16
LPIPS	0.41124	0.3967	0.3920	0.3891	0.3877	0.3874	0.3867	0.3866
Inference Time (s)	16.00	17.11	18.82	20.64	22.45	24.25	25.99	27.81

Table 3. Ablation study: number of images for fusion

Method	WorldStrat		fMoW	
	LPIPS \downarrow	FID \downarrow	LPIPS \downarrow	FID \downarrow
WorldStrat	0.481	139.3	0.736	426.7
MSRResNet	0.472	159.7	0.783	286.5
DBPN	0.475	122.6	0.750	278.2
Pix2Pix	0.427	93.90	0.643	196.3
ControlNet	0.580	108.0	0.644	102.3
DiffusionSat	0.561	92.97	0.638	<u>102.9</u>
SatDiffMoE (Ours)	0.418	88.12	0.606	115.6

Table 4. Comparison of LPIPS and FID metrics for super-resolution on WorldStrat dataset and fMoW. Best results are in bold. Second best results are underlined.

tional condition for fine-tuned stable diffusion to predict the HR image. Both MSRResNet and DBPN are CNN-based methods that directly map the low-resolution image to the high-resolution image, and Pix2Pix is a GAN-based method. Both WorldStrat and DiffusionSat are fusion-based methods that fuse multiple low-resolution input to predict the HR image, while others take single low-resolution input and predict the HR image.

Results and Discussions The LPIPS scores on six selected class in fMoW dataset are reported in Table 1. We also report LPIPS and FID scores in Table 4 on both fMoW and WorldStrat datasets compared to the six baselines mentioned before. We observe that our algorithm largely achieves better or comparable performance in perceptual quality. Our method achieves state-of-the-art LPIPS score compared to all baselines and comparable FID scores. CNN-based baselines tend to perform poorly in perceptual quality, resulting in sub-par FID scores compared to diffusion-based methods. While ControlNet may show slightly better FID scores, but the LPIPS score is significantly worse than ours. We also show reasonable PSNR and SSIM scores, as demonstrated in the Appendix. Qualitatively, as demonstrated in Fig. 3, we also demonstrate that our method is able to capture fine-grained details. Compared to baselines, we are able to reconstruct both realistic images and accurate details.

Computational Efficiency We observe that the training phase of our proposed method requires much fewer pa-

rameters and iterations to converge than ControlNet and DiffusionSat, while achieving comparable or better reconstruction performance. We report the number of parameters and number of iterations of training in Table 5. We train each model until the FID stops improving. Our method converges significantly (5-15 times) faster than ControlNet and DiffusionSat on both datasets. We also do not observe the "sudden convergence phenomena" in our training which is reported in ControlNet, which implies that our training may be more stable. Our method also exhibits better computational efficiency compared to ControlNet. As demonstrated in Table 5, our algorithm requires significantly less training time than ControlNet.

4.3. Ablation Studies

We want to study the impact of the fusion module and the relative time difference embedding on the reconstruction quality. We are also interested in the number of images for fusion. Intuitively, with more LR images provided for fusion, we have more complementary details and can achieve better perceptual quality.

Effectiveness of relative time embedding and fusion We demonstrate the performance of our method without RelativeTimeDiff and Fusion, our method with RelativeTimeDiff, and our full method on the WorldStrat validation dataset in Table 2. We found that both modules have significant positive impact to the perceptual quality (LPIPS score), while the fusion module improves both the LPIPS score and the FID score. On the other hand, we also find improvement in the distortion metrics when adding both modules. Qualitatively, as shown in Fig. 5, with our fusion algorithm, we can reconstruct super-resolved images with better quality.

Impact of number of images on fusion We present the effect of increasing number of image for fusion on the reconstruction quality on the first 100 images in the validation set of WorldStrat dataset in Table 3. We observe that the reconstruction quality improves significantly when adding more images for fusion when there are few images for fusion (i.e. fewer than 4), but the performance almost saturates

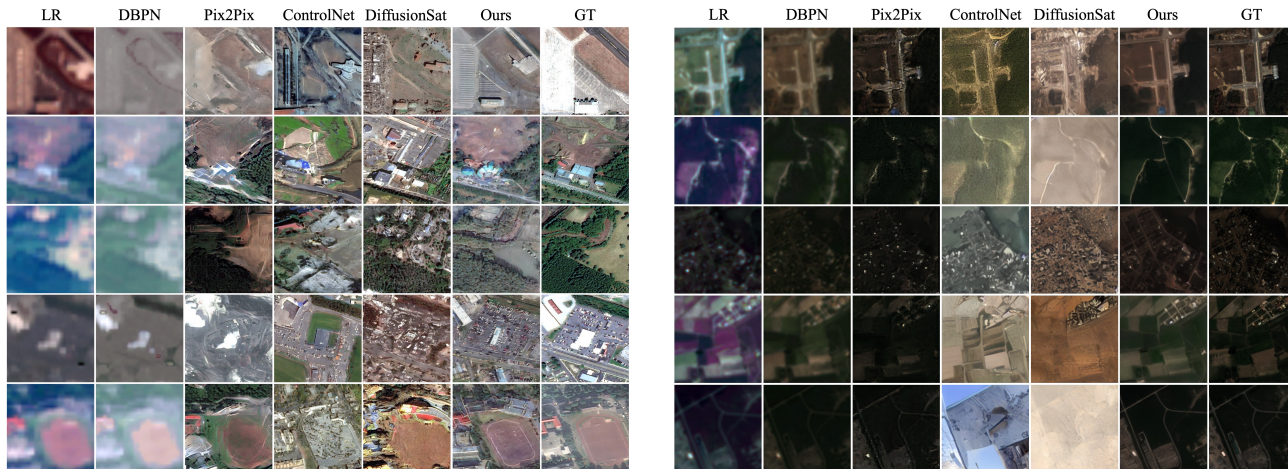


Figure 3. (Left) Super-resolution on fMoW dataset. (Right) Super-resolution on WorldStrat dataset.

Method	WorldStrat		fMoW	
	Parameters (M)	Iterations for Training	Parameters (M)	Iterations for Training
ControlNet (Zhang et al., 2023)	1427	12500	1427	21400
DiffusionSat (Khanna et al., 2024)	1428	12500	1428	20000
Ours	1068	800	1068	4400

Table 5. Number of parameters and memory required.

when the number of images exceeds 10, and will trade-off between image quality and inference time. This observation validates our hypothesis that fusing information from multiple LR images improves the reconstruction quality and there exists a diminishing return on the number of LRs.

5. Conclusion

In this work, we present "SatDiffMoE", a novel framework for satellite image super-resolution with latent diffusion models. We first present a novel training mechanism that conditions on relative time difference of LR images and HR images. Then, we propose a novel inference-time algorithm that fuses the reverse sampling trajectory from inputs of different LRs at the same location but different times. Our method is highly flexible that can adapt to an arbitrary number of low-resolution inputs at test-time and requires fewer parameters than diffusion-based counterparts. One of our limitation is we do not impose physical measurement constraint in our reconstruction process, which we will leave as future work.

References

Kumar Ayush, Burak Uz Kent, Marshall Burke, David Lobell, and Stefano Ermon. Generating interpretable poverty maps using object detection in satellite images. *arXiv preprint arXiv:2002.01612*, 2020.

Kumar Ayush, Burak Uz Kent, Kumar Tanmay, Marshall Burke, David Lobell, and Stefano Ermon. Efficient poverty mapping from high resolution remote sensing images. In *Proceedings of the AAAI Conference on Artificial Intelligence*, volume 35, pages 12–20, 2021.

Anthony Beck, Graham Philip, Maamoun Abdulkarim, and Daniel Donoghue. Evaluation of corona and ikonos high resolution satellite imagery for archaeological prospection in western syria. *antiquity*, 81(311):161–175, 2007.

Andreas Blattmann, Robin Rombach, Huan Ling, Tim Dockhorn, Seung Wook Kim, Sanja Fidler, and Karsten Kreis. Align your latents: High-resolution video synthesis with latent diffusion models. In *Proceedings of the IEEE/CVF Conference on Computer Vision and Pattern Recognition*, pages 22563–22575, 2023.

Marshall Burke, Anne Driscoll, David B Lobell, and Stefano Ermon. Using satellite imagery to understand and promote sustainable development. *Science*, 371(6535): eabe8628, 2021.

Duygu Ceylan, Chun-Hao P Huang, and Niloy J Mitra. Pix2video: Video editing using image diffusion. In *Proceedings of the IEEE/CVF International Conference on Computer Vision*, pages 23206–23217, 2023.

Gordon Christie, Neil Fendley, James Wilson, and Ryan Mukherjee. Functional map of the world. In *Proceedings*

- of the *IEEE Conference on Computer Vision and Pattern Recognition*, pages 6172–6180, 2018.
- Hyungjin Chung, Jeongsol Kim, Michael Thompson McCann, Marc Louis Klasky, and Jong Chul Ye. Diffusion posterior sampling for general noisy inverse problems. In *The Eleventh International Conference on Learning Representations*, 2023. URL <https://openreview.net/forum?id=OnD9zGAGT0k>.
- Hyungjin Chung, Suhyeon Lee, and Jong Chul Ye. Decomposed diffusion sampler for accelerating large-scale inverse problems. 2024.
- Yezhen Cong, Samar Khanna, Chenlin Meng, Patrick Liu, Erik Rozi, Yutong He, Marshall Burke, David Lobell, and Stefano Ermon. Satmae: Pre-training transformers for temporal and multi-spectral satellite imagery. *Advances in Neural Information Processing Systems*, 35:197–211, 2022.
- Julien Cornebise, Ivan Oršolić, and Freddie Kalaitzis. Open high-resolution satellite imagery: The worldstrat dataset—with application to super-resolution. *Advances in Neural Information Processing Systems*, 35:25979–25991, 2022.
- Antonia Creswell, Tom White, Vincent Dumoulin, Kai Arulkumaran, Biswa Sengupta, and Anil A Bharath. Generative adversarial networks: An overview. *IEEE signal processing magazine*, 35(1):53–65, 2018.
- Muhammad Haris, Gregory Shakhnarovich, and Norimichi Ukita. Deep back-projection networks for super-resolution. In *Proceedings of the IEEE conference on computer vision and pattern recognition*, pages 1664–1673, 2018.
- Jonathan Ho, Tim Salimans, Alexey Gritsenko, William Chan, Mohammad Norouzi, and David J Fleet. Video diffusion models. *Advances in Neural Information Processing Systems*, 35:8633–8646, 2022.
- Phillip Isola, Jun-Yan Zhu, Tinghui Zhou, and Alexei A. Efros. Image-to-image translation with conditional adversarial networks. In *Proceedings of the IEEE Conference on Computer Vision and Pattern Recognition (CVPR)*, July 2017.
- Bahjat Kawar, Michael Elad, Stefano Ermon, and Jiaming Song. Denoising diffusion restoration models, 2022.
- Samar Khanna, Patrick Liu, Linqi Zhou, Chenlin Meng, Robin Rombach, Marshall Burke, David B. Lobell, and Stefano Ermon. Diffusionsat: A generative foundation model for satellite imagery. In *The Twelfth International Conference on Learning Representations*, 2024. URL <https://openreview.net/forum?id=I5webNFDgQ>.
- Diederik P Kingma and Max Welling. Auto-encoding variational bayes. *arXiv preprint arXiv:1312.6114*, 2013.
- P. Langley. Crafting papers on machine learning. In Pat Langley, editor, *Proceedings of the 17th International Conference on Machine Learning (ICML 2000)*, pages 1207–1216, Stanford, CA, 2000. Morgan Kaufmann.
- Xinghua Li, Zhiwei Li, Ruitao Feng, Shuang Luo, Chi Zhang, Menghui Jiang, and Huanfeng Shen. Generating high-quality and high-resolution seamless satellite imagery for large-scale urban regions. *Remote Sensing*, 12(1):81, 2019.
- Yunan Luo, Kaiyu Guan, and Jian Peng. Stair: A generic and fully-automated method to fuse multiple sources of optical satellite data to generate a high-resolution, daily and cloud-/gap-free surface reflectance product. *Remote Sensing of Environment*, 214:87–99, 2018.
- Ziwei Luo, Fredrik K Gustafsson, Zheng Zhao, Jens Sjölund, and Thomas B Schön. Refusion: Enabling large-size realistic image restoration with latent-space diffusion models. In *Proceedings of the IEEE/CVF conference on computer vision and pattern recognition*, pages 1680–1691, 2023.
- Rose M Rustowicz, Robin Cheong, Lijing Wang, Stefano Ermon, Marshall Burke, and David Lobell. Semantic segmentation of crop type in africa: A novel dataset and analysis of deep learning methods. In *Proceedings of the IEEE/cvf conference on computer vision and pattern recognition workshops*, pages 75–82, 2019.
- Jorge Andres Chamorro Martinez, Laura Elena Cué La Rosa, Raul Queiroz Feitosa, Ieda Del’Arco Sanches, and Patrick Nigri Happ. Fully convolutional recurrent networks for multivariate crop recognition from multitemporal image sequences. *ISPRS Journal of Photogrammetry and Remote Sensing*, 171:188–201, 2021.
- Haomiao Ni, Changhao Shi, Kai Li, Sharon X Huang, and Martin Renqiang Min. Conditional image-to-video generation with latent flow diffusion models. In *Proceedings of the IEEE/CVF Conference on Computer Vision and Pattern Recognition*, pages 18444–18455, 2023.
- Robin Rombach, Andreas Blattmann, Dominik Lorenz, Patrick Esser, and Björn Ommer. High-resolution image synthesis with latent diffusion models, 2022.
- Nataniel Ruiz, Yuanzhen Li, Varun Jampani, Yael Pritch, Michael Rubinstein, and Kfir Aberman. Dreambooth: Fine tuning text-to-image diffusion models for subject-driven generation. In *Proceedings of the IEEE/CVF Conference on Computer Vision and Pattern Recognition*, pages 22500–22510, 2023.

- Chitwan Saharia, William Chan, Saurabh Saxena, Lala Li, Jay Whang, Emily L Denton, Kamyar Ghasemipour, Raphael Gontijo Lopes, Burcu Karagol Ayan, Tim Salimans, et al. Photorealistic text-to-image diffusion models with deep language understanding. *Advances in neural information processing systems*, 35:36479–36494, 2022.
- Bowen Song, Liyue Shen, and Lei Xing. Piner: Prior-informed implicit neural representation learning for test-time adaptation in sparse-view ct reconstruction. In *Proceedings of the IEEE/CVF winter conference on applications of computer vision*, pages 1928–1938, 2023.
- Bowen Song, Soo Min Kwon, Zecheng Zhang, Xinyu Hu, Qing Qu, and Liyue Shen. Solving inverse problems with latent diffusion models via hard data consistency. In *The Twelfth International Conference on Learning Representations*, 2024.
- Jiaming Song, Chenlin Meng, and Stefano Ermon. Denoising diffusion implicit models, 2022.
- Yang Song, Liyue Shen, Lei Xing, and Stefano Ermon. Solving inverse problems in medical imaging with score-based generative models. *arXiv preprint arXiv:2111.08005*, 2021.
- Tomasz Tarasiewicz, Jakub Nalepa, Reuben A Farrugia, Gianluca Valentino, Mang Chen, Johann A Briffa, and Michal Kawulok. Multitemporal and multispectral data fusion for super-resolution of sentinel-2 images. *IEEE Transactions on Geoscience and Remote Sensing*, 2023.
- Adam Van Etten, Dave Lindenbaum, and Todd M Bacastow. Spacenet: A remote sensing dataset and challenge series. *arXiv preprint arXiv:1807.01232*, 2018.
- Ashish Vaswani, Noam Shazeer, Niki Parmar, Jakob Uszkoreit, Llion Jones, Aidan N Gomez, Łukasz Kaiser, and Illia Polosukhin. Attention is all you need. *Advances in neural information processing systems*, 30, 2017.
- Vikram Voleti, Alexia Jolicoeur-Martineau, and Chris Pal. Mcvd-masked conditional video diffusion for prediction, generation, and interpolation. *Advances in neural information processing systems*, 35:23371–23385, 2022.
- Anna X Wang, Caelin Tran, Nikhil Desai, David Lobell, and Stefano Ermon. Deep transfer learning for crop yield prediction with remote sensing data. In *Proceedings of the 1st ACM SIGCAS Conference on Computing and Sustainable Societies*, pages 1–5, 2018a.
- Xintao Wang, Ke Yu, Shixiang Wu, Jinjin Gu, Yihao Liu, Chao Dong, Yu Qiao, and Chen Change Loy. Esrgan: Enhanced super-resolution generative adversarial networks. In *Proceedings of the European conference on computer vision (ECCV) workshops*, pages 0–0, 2018b.
- Yinhuai Wang, Jiwen Yu, and Jian Zhang. Zero-shot image restoration using denoising diffusion null-space model, 2022.
- Sihyun Yu, Kihyuk Sohn, Subin Kim, and Jinwoo Shin. Video probabilistic diffusion models in projected latent space. In *Proceedings of the IEEE/CVF Conference on Computer Vision and Pattern Recognition*, pages 18456–18466, 2023.
- Lvmin Zhang, Anyi Rao, and Maneesh Agrawala. Adding conditional control to text-to-image diffusion models. In *Proceedings of the IEEE/CVF International Conference on Computer Vision*, pages 3836–3847, 2023.

A. Appendix

A.1. Implementation Details

Data Preprocessing WorldStrat We obtain the RGB satellite images provided by (Cornebise et al., 2022). We follow the preprocessing steps given by (Cornebise et al., 2022), that crop the HR images into patches of 192×192 and LR images into corresponding patches of the HR images of size 63×63 . For each HR image, there are 16 corresponding LR images of different time. We extract the RGB band of the HR images and the RGB band of every LR images. We then resize LR image into the size of 192×192 . We use the same training and validation split provided by (Cornebise et al., 2022) and then form a training and validation set. We then extract the timestamp from the metadata and compute the dt_i for each LR_i .

fMoW We obtain the high-resolution images from (Christie et al., 2018), and the paired Sentinel-2 images from (Cong et al., 2022). We first identify the area of interest on the HR images as given by (Christie et al., 2018), and then crop out other areas. Then we crop the corresponding LR images following the pre-processing steps given by (Cong et al., 2022). We crop the HR images into patches of 512×512 , and align LR images into patches based on each HR image patch. Then we resize each LR image into the size of 512×512 in accordance with the HR image. We consider 6 categories: airport, amusement parks, car dealership, crop field, educational institution, electric substation for training and testing. For training, we filter out HR images that do not have a corresponding LR, and those do not have three channels. We take the same training and validation split from (Christie et al., 2018). When training, we consider all images from (Christie et al., 2018), and when testing, we pick the first 100 images from each selected category of the validation set of (Christie et al., 2018). We also extract dt_i from the metadata of fmoW provided by (Christie et al., 2018), and the metadata of Sentinel-2 data provided by (Cong et al., 2022).

Model Training We take the pretrained checkpoint (SD1.2) provided by (Rombach et al., 2022), and then fine tune on the processed (Christie et al., 2018) and (Cornebise et al., 2022) datasets. We rescale every LR image and HR image to the scale of $[0,1]$. Then, we use a learning rate $1e^{-5}$, and a batch size of 4 for both datasets. We stop training when the FID of sampled images stops improving. For (Cornebise et al., 2022) dataset, we only train 800 iterations (partly due to the small dataset size). For (Christie et al., 2018) dataset, we train 4400 iterations. We then take the model for downstream inference tasks. For WorldStrat dataset, we use the prompt "Satellite images" for training. For fMoW dataset, we use the prompt "Satellite image of **selected class** from a direct overhead view", where selected class is the category name.

Model Inferencing We use 50 DDIM steps with $\eta = 0$ for inferencing. We perform optimization every 5 steps for computational efficiency, otherwise, we just perform conditional sampling. We set $\lambda = 0.1$ and $\alpha = 0.2$ for both datasets.

A.2. More Ablation Studies

Effect of LPIPS weight α and optimization weight λ There are two hyper-parameters in our inference-time algorithm, and that is the weight for LPIPS distance α v.s. L2 distance, and the weight λ for balancing the original predicted clean image component and the one after optimization. We expect the perceptual quality of reconstructed images to improve when we increase α from 0. We also expect the reconstruction quality to improve when λ increases from 0 since the weight of fusion increases. In Fig.4, we present the LPIPS score on 100 samples on the WorldStrat dataset with varying α and λ . We find that LPIPS score improves when both α and λ increase from 0. Then, performance converges as α keeps increasing, and marginally degrades as λ continues to increase. We observe that generally, the performance of our algorithm is insensitive to hyperparameter change.

A.3. Implementation Details of Baselines

WorldStrat We follow the original codebase of (Cornebise et al., 2022), where we train the HighResNet model on both (Christie et al., 2018) and (Cornebise et al., 2022) datasets. We tune the hyperparameters of the loss function based on our validation set. We stop training when the validation performance converges. On (Cornebise et al., 2022) we train 125000 iterations with a batch size of 32, and on (Christie et al., 2018) we take 100000 iterations with a batch size of 32.

MSRResNet We follow the original codebase of (Wang et al., 2018b), where we train the MSRResNet model on both (Christie et al., 2018) and (Cornebise et al., 2022) datasets. During training, we randomly pick a LR image and its paired HR image. We tune the hyperparameters of the loss function based on validation set performance. We train for 160000 iterations for both (Cornebise et al., 2022) and (Christie et al., 2018) datasets with a batch size of 16.

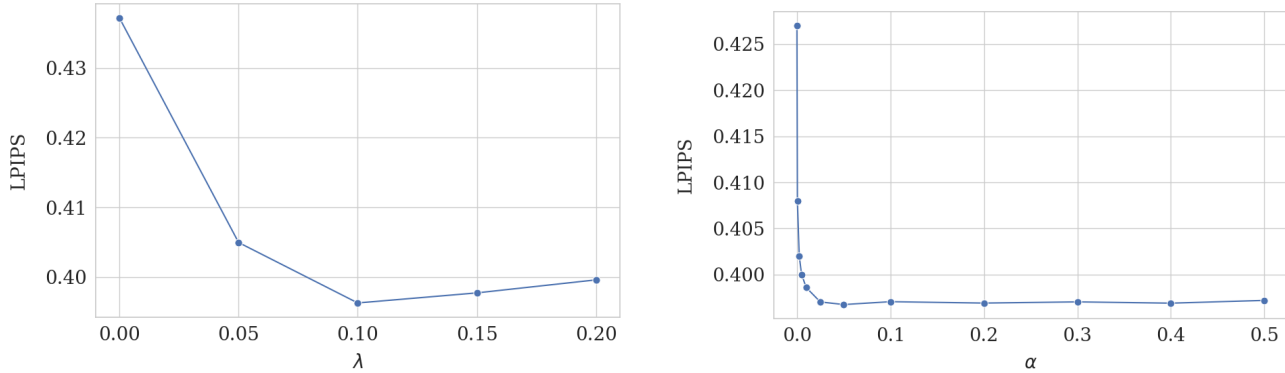


Figure 4. (Left) Ablation study on LPIPS weight α . (Right) Ablation study on optimization weight λ .

DBPN We follow the original codebase of (Haris et al., 2018), where we train the MSRResNet model on both (Christie et al., 2018) and (Cornebise et al., 2022) datasets. During training, we randomly pick a LR image and its paired HR image. We tune the hyperparameters of the loss function based on validation set performance. We train for 100 epochs for both (Cornebise et al., 2022) and (Christie et al., 2018) datasets with a batch size of 16.

Pix2Pix We follow the original codebase of (Isola et al., 2017), where we train the MSRResNet model on both (Christie et al., 2018) and (Cornebise et al., 2022) datasets. During training, we randomly pick a LR image and its paired HR image. We tune the hyperparameters of the loss function based on validation set performance. We train for 30 epochs for (Christie et al., 2018) and 100 epochs for (Cornebise et al., 2022) with a batch size of 16.

ControlNet We follow the original codebase of (Zhang et al., 2023). During training, we randomly pick a LR image and its paired HR image. We tune the hyperparameters of the loss function based on validation set performance. We train for 12500 iterations with a batch size of 16 for (Cornebise et al., 2022), and 21500 iterations with a batch size of 16 for (Christie et al., 2018).

DiffusionSat We implemented the 3D ControlNet architecture as mentioned in (?). Then, we take the RGB band and the SWIR, NIR band from LR image for training 3D ControlNet. We tune the hyperparameters of the loss function based on validation set performance. We train for 12500 iterations with a batch size of 16 for (Cornebise et al., 2022), and 20000 iterations with a batch size of 16 for (Christie et al., 2018). We observe that further training worsened FID scores on both datasets.

A.4. More Results

We report additional results on unconditional generation and conditioning on dt_i as demonstrated in Fig.6, and Fig.7. We observe that we can generate realistic satellite images. Conditioning on dt_i makes semantic changes in the image and can be applied to tasks such as cloud removal. We also report the PSNR and SSIM metrics in Table 6. The error bars are presented in Table 7.

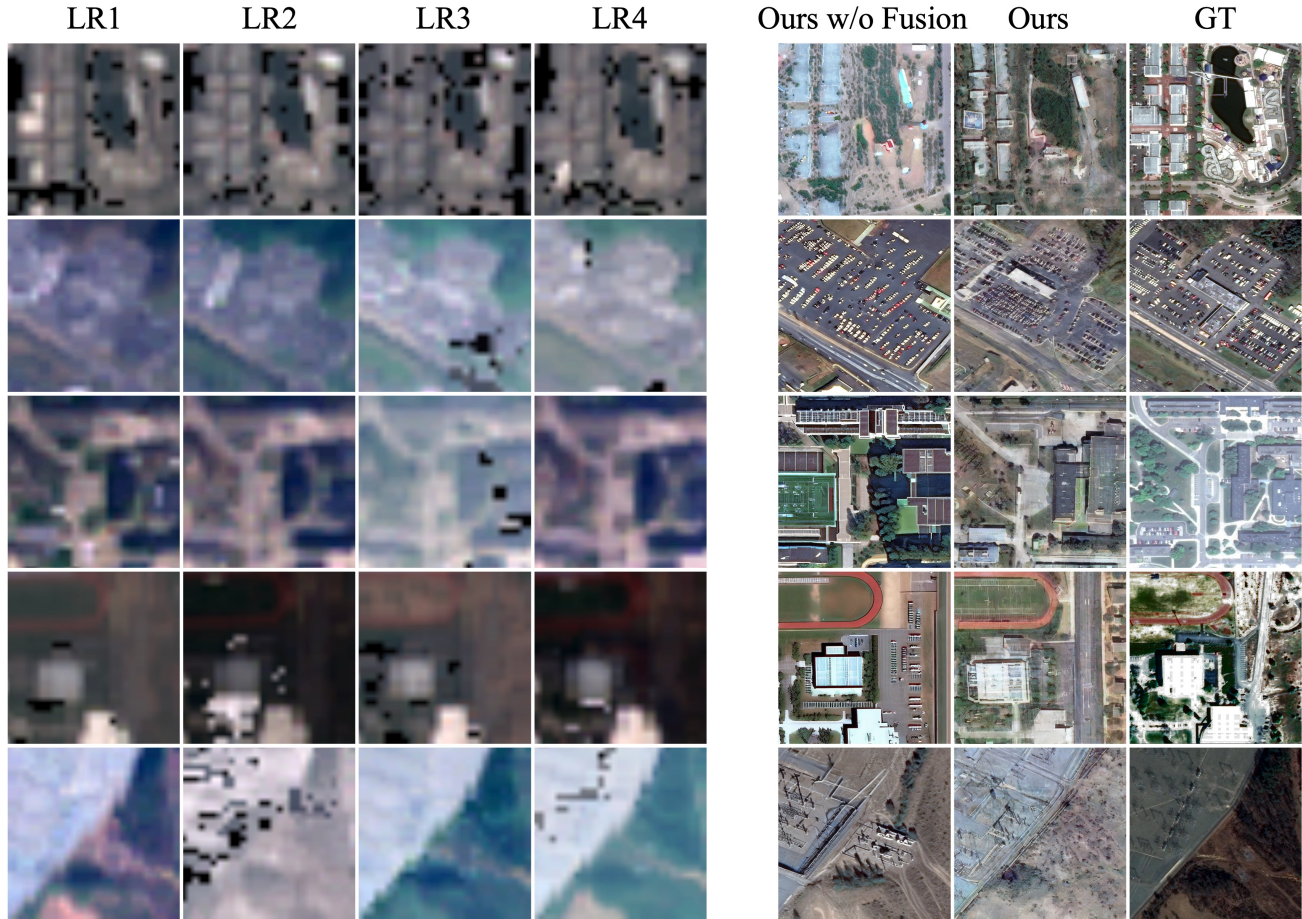


Figure 5. Super-resolution results on fMoW dataset by SatDiffMoE with and without fusion. We show SatDiffMoE without fusion by conditioning on the first LR image and SatDiffMoE with fusion by fusing the four LR images.

Method	WorldStrat		fMoW	
	PSNR \uparrow	SSIM \uparrow	PSNR \uparrow	SSIM \uparrow
WorldStrat (Cornebise et al., 2022)	17.98	0.396	13.42	0.443
MSRResNet (Wang et al., 2018b)	19.81	0.512	<u>13.01</u>	<u>0.290</u>
DBPN (Haris et al., 2018)	19.17	<u>0.471</u>	11.90	0.268
Pix2Pix (Isola et al., 2017)	<u>19.76</u>	0.448	12.21	0.180
ControlNet (Zhang et al., 2023)	11.89	0.113	10.82	0.117
DiffusionSat (Khanna et al., 2024)	12.34	0.133	10.63	0.109
SatDiffMoE (Ours)	17.40	0.396	11.96	0.172

Table 6. Comparison of PSNR and SSIM metrics for super-resolution on WorldStrat dataset and fMoW. Best results are in bold. Second best results are underlined.

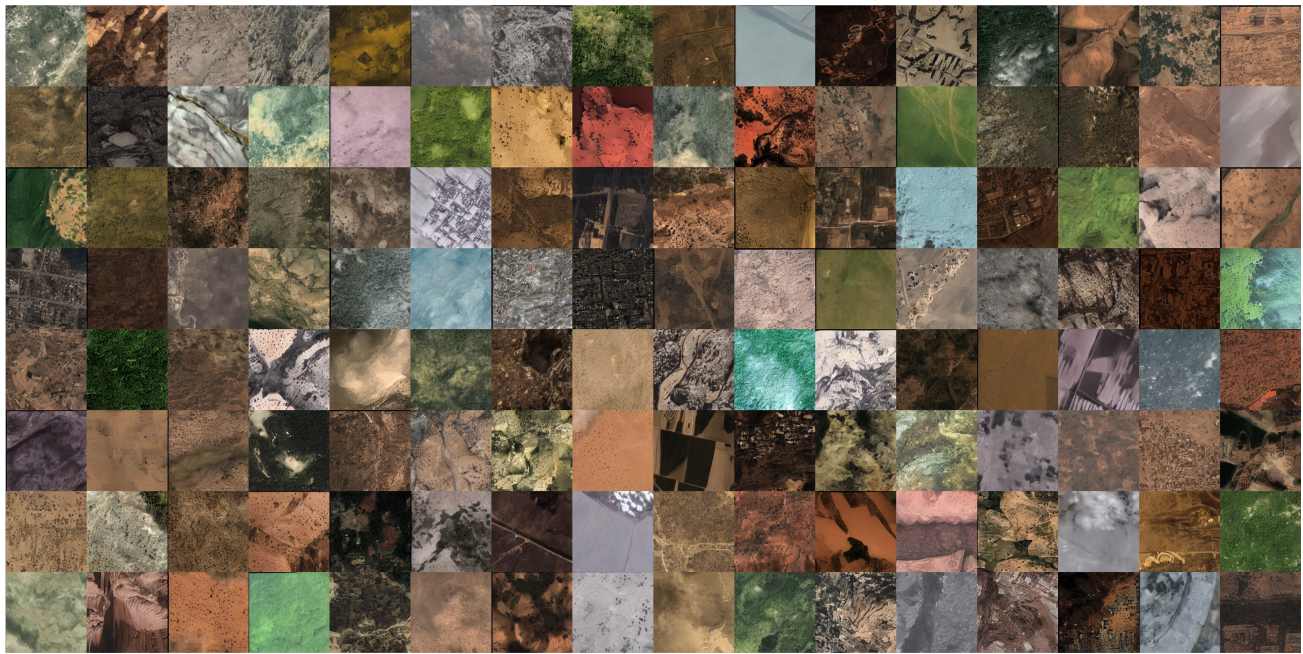


Figure 6. Generated high resolution samples from our unconditional model.

Method	WorldStrat	MSRResNet	DBPN	Pix2Pix	ControlNet	DiffusionSat	SatDiffMoE(Ours)
WorldStrat	0.081	0.077	0.079	0.069	0.079	0.091	0.076
fMoW	0.092	0.081	0.052	0.045	0.034	0.034	0.044

Table 7. Standard deviation of the quantitative metric LPIPS presented in Table 4 for super-resolution on fMoW and WorldStrat dataset.

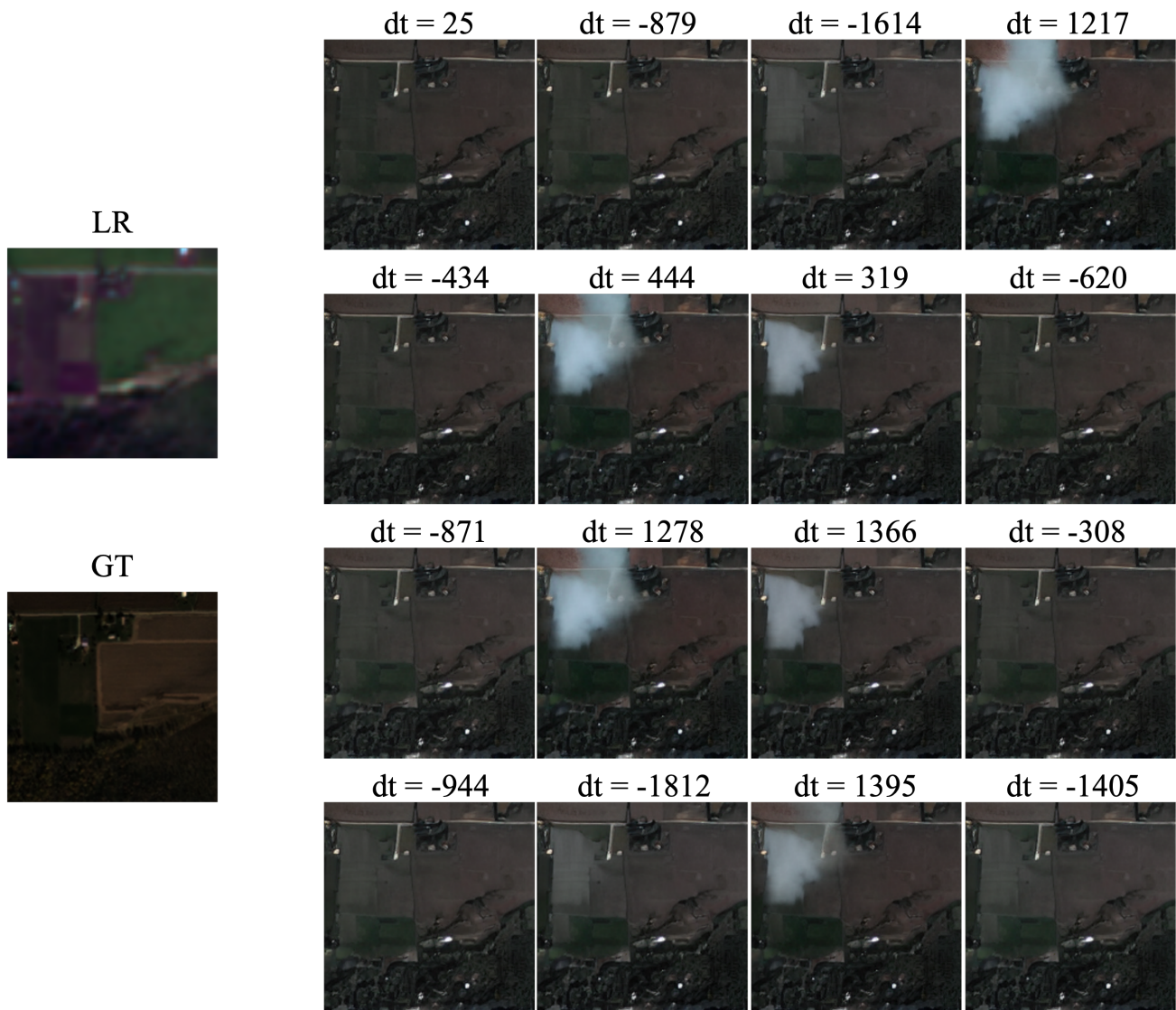


Figure 7. Here we consider the same LR image, and vary the relative time difference to generate different conditional samples.