

PIXART- α : FAST TRAINING OF DIFFUSION TRANSFORMER FOR PHOTOREALISTIC TEXT-TO-IMAGE SYNTHESIS

Junsong Chen^{1,2,3*}, Jincheng Yu^{1,4*}, Chongjian Ge^{1,3*}, Lewei Yao^{1,4*}, Enze Xie^{1†}, Yue Wu¹, Zhongdao Wang¹, James Kwok⁴, Ping Luo³, Huchuan Lu², Zhenguo Li¹

¹Huawei Noah’s Ark Lab ²Dalian University of Technology ³HKU ⁴HKUST

jschen@mail.dlut.edu.cn, rhettgee@connect.hku.hk,
{yujincheng4, yao.lewei, xie.enze, Li.Zhenguo}@huawei.com

Project Page: <https://pixart-alpha.github.io/>

ABSTRACT

The most advanced text-to-image (T2I) models require significant training costs (*e.g.*, millions of GPU hours), seriously hindering the fundamental innovation for the AIGC community while increasing CO₂ emissions. This paper introduces PIXART- α , a Transformer-based T2I diffusion model whose image generation quality is competitive with state-of-the-art image generators (*e.g.*, Imagen, SDXL, and even Midjourney), reaching near-commercial application standards. Additionally, it supports high-resolution image synthesis up to 1024×1024 resolution with low training cost, as shown in Figure 1 and 2. To achieve this goal, three core designs are proposed: (1) Training strategy decomposition: We devise three distinct training steps that respectively optimize pixel dependency, text-image alignment, and image aesthetic quality; (2) Efficient T2I Transformer: We incorporate cross-attention modules into Diffusion Transformer (DiT) to inject text conditions and streamline the computation-intensive class-condition branch; (3) High-informative data: We emphasize the significance of concept density in text-image pairs and leverage a large Vision-Language model to auto-label dense pseudo-captions to assist text-image alignment learning. As a result, PIXART- α ’s training speed markedly surpasses existing large-scale T2I models, *e.g.*, PIXART- α only takes 12% of Stable Diffusion v1.5’s training time (~ 753 vs. $\sim 6,250$ A100 GPU days), saving nearly \$300,000 (\$28,400 vs. \$320,000) and reducing 90% CO₂ emissions. Moreover, compared with a larger SOTA model, RAPHAEL, our training cost is merely 1%. Extensive experiments demonstrate that PIXART- α excels in image quality, artistry, and semantic control. We hope PIXART- α will provide new insights to the AIGC community and startups to accelerate building their own high-quality yet low-cost generative models from scratch.

1 INTRODUCTION

Recently, the advancement of text-to-image (T2I) generative models, such as DALL-E 2 (OpenAI, 2023), Imagen (Saharia et al., 2022), and Stable Diffusion (Rombach et al., 2022) has started a new era of photorealistic image synthesis, profoundly impacting numerous downstream applications, such as image editing (Kim et al., 2022), video generation (Wu et al., 2022), 3D assets creation (Poole et al., 2022), *etc.*

However, the training of these advanced models demands immense computational resources. For instance, training SDv1.5 (Podell et al., 2023) necessitates 6K A100 GPU days, approximately costing \$320,000, and the recent larger model, RAPHAEL (Xue et al., 2023b), even costs 60K A100 GPU days – requiring around \$3,080,000, as detailed in Table 2. Additionally, the training contributes substantial CO₂ emissions, posing environmental stress; *e.g.* RAPHAEL’s (Xue et al., 2023b) train-

*Equal contribution. Work done during the internships of the four students at Huawei Noah’s Ark Lab.

† Project lead and corresponding author.



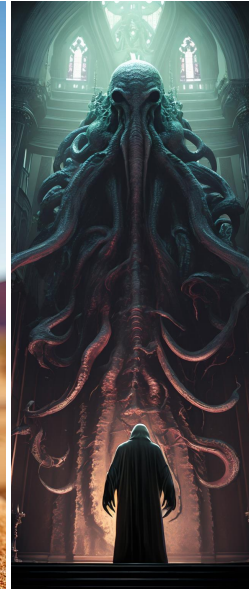
beautiful scene with mountains and rivers in a small village



Pirate ship trapped in a cosmic maelstrom nebula



a small cactus with a happy face in the Sahara desert



Cthulhu, alien, in a huge towering church, an evil statue with a skeleton in his hand



product photography, world of warcraft orc warrior, white background



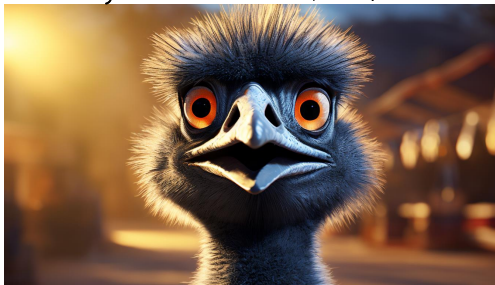
little girl with red hair sitting at a table, portrait, kodak portray



paper artwork, layered paper, colorful Chinese dragon surrounded by clouds



a traveler navigating via a boat in countless mountains, Chinese ink painting



a Emu, focused yet playful, ready for a competitive matchup, photorealistic quality with cartoon vibes



Oppenheimer sits on the beach on a chair, watching a nuclear exposition with a huge mushroom cloud, 120mm

Figure 1: Samples produced by PIXART- α exhibit exceptional quality, characterized by a remarkable level of fidelity and precision in adhering to the provided textual descriptions.

ing results in 35 tons of CO₂ emissions, equivalent to the amount one person emits over 7 years, as shown in Figure 2. Such a huge cost imposes significant barriers for both the research community and entrepreneurs in accessing those models, causing a significant hindrance to the crucial advancement of the AIGC community. Given these challenges, a pivotal question arises: *Can we develop a high-quality image generator with affordable resource consumption?*

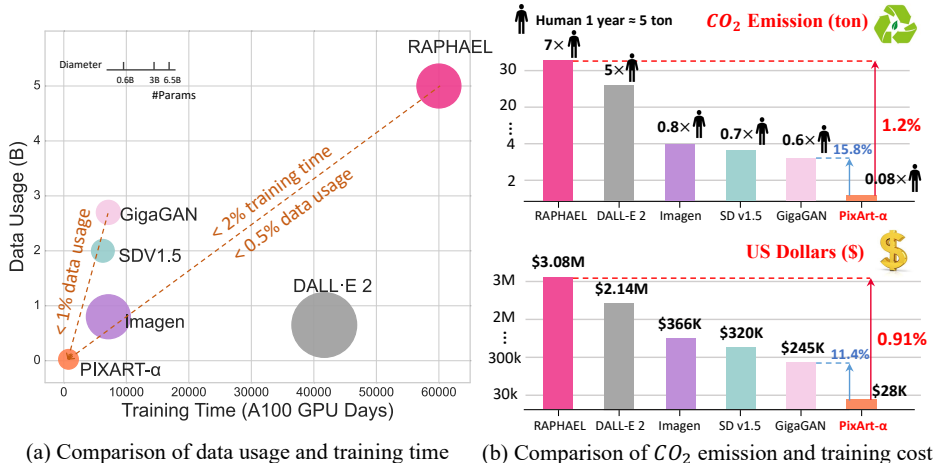


Figure 2: Comparisons of CO₂ emissions¹ and training cost² among T2I generators. PIXART-α achieves an exceptionally low training cost of \$28,400. Compared to RAPHAEL, our CO₂ emissions and training costs are merely 1.2% and 0.91%, respectively.

In this paper, we introduce PIXART-α, which significantly reduces computational demands of training while maintaining competitive image generation quality to the current state-of-the-art image generators, as illustrated in Figure 1. To achieve this, we propose three core designs:

Training strategy decomposition. We decompose the intricate text-to-image generation task into three streamlined subtasks: (1) learning the pixel distribution of natural images, (2) learning text-image alignment, and (3) enhancing the aesthetic quality of images. For the first subtask, we propose initializing the T2I model with a low-cost class-condition model, significantly reducing the learning cost. For the second and third subtasks, we formulate a training paradigm consisting of pretraining and fine-tuning: pretraining on text-image pair data rich in information density, followed by fine-tuning on data with superior aesthetic quality, boosting the training efficiency.

Efficient T2I Transformer. Based on the Diffusion Transformer (DiT) (Peebles & Xie, 2023), we incorporate cross-attention modules to inject text conditions and streamline the computation-intensive class-condition branch to improve efficiency. Furthermore, we introduce a re-parameterization technique that allows the adjusted text-to-image model to load the original class-condition model’s parameters directly. Consequently, we can leverage prior knowledge learned from ImageNet (Deng et al., 2009) about natural image distribution to give a reasonable initialization for the T2I Transformer and accelerate its training.

High-informative data. Our investigation reveals notable shortcomings in existing text-image pair datasets, exemplified by LAION (Schuhmann et al., 2021), where textual captions often suffer from a lack of informative content (*i.e.*, typically describing only a partial of objects in the images) and a severe long-tail effect (*i.e.*, with a large number of nouns appearing with extremely low frequencies). These deficiencies significantly hamper the training efficiency for T2I models and lead to millions of iterations to learn stable text-image alignments. To address them, we propose an auto-labeling pipeline utilizing the state-of-the-art vision-language model (LLaVA (Liu et al., 2023)) to generate captions on the SAM (Kirillov et al., 2023). Referencing in Section 2.4, the SAM dataset is advantageous due to its rich and diverse collection of objects, making it an ideal resource for creating high-information-density text-image pairs, more suitable for text-image alignment learning.

¹The method for estimating CO₂ emissions follows Alexandra Sasha Luccioni (2022).

²The training cost refers to the cloud GPU pricing from Microsoft (2023) Azure in September 20, 2023.

Our effective designs result in remarkable training efficiency for our model, costing only 753 A100 GPU days and \$28,400. As demonstrated in Figure 2, our method consumes less than 1.25% training data volume compared to SDv1.5 and costs less than 2% training time compared to RAPHAEL. Compared to RAPHAEL, our training costs are only 1%, saving approximately \$3,000,000 (PIXART- α 's \$28,400 vs. RAPHAEL's \$3,080,000). Regarding generation quality, our user study experiments indicate that PIXART- α offers superior image quality and semantic alignment compared to existing SOTA T2I models (e.g., DALL-E 2 (OpenAI, 2023), Stable Diffusion (Rombach et al., 2022), etc.), and its performance on T2I-CompBench (Huang et al., 2023) also evidences our advantage in semantic control. We hope our attempts to train T2I models efficiently can offer valuable insights for the AIGC community and help more individual researchers or startups create their own high-quality T2I models at lower costs.

2 METHOD

2.1 MOTIVATION

The reasons for slow T2I training lie in two aspects: the training pipeline and the data.

The T2I generation task can be decomposed into three aspects: **Capturing Pixel Dependency**: Generating realistic images involves understanding intricate pixel-level dependencies within images and capturing their distribution; **Alignment between Text and Image**: Precise alignment learning is required for understanding how to generate images that accurately match the text description; **High Aesthetic Quality**: Besides faithful textual descriptions, being aesthetically pleasing is another vital attribute of generated images. Current methods entangle these three problems together and directly train from scratch using vast amount of data, resulting in inefficient training. To solve this issue, we disentangle these aspects into three stages, as will be described in Section 2.2.

Another problem, depicted in Figure 3, is with the quality of captions of the current dataset. The current text-image pairs often suffer from text-image misalignment, deficient descriptions, infrequent diverse vocabulary usage, and inclusion of low-quality data. These problems introduce difficulties in training, resulting in unnecessarily millions of iterations to achieve stable alignment between text and images. To address this challenge, we introduce an innovative auto-labeling pipeline to generate precise image captions, as will be described in Section 2.4.




Problems	Text-image misalignment	Deficient descriptions	Infrequent vocabulary
Samples			
Raw caption	What science says about pu'erh tea?	AH1370/1950 Saudi Arabia Gold One Guinea MS-63 NGC	2018 Kawasaki Jet Ski Ultra 310LX in Unionville, Virginia
LLaVA refined caption	The image features a close-up of a cup of tea with a saucer on a wooden table. The tea is described as " pu'erh tea ," which is a type of Chinese tea known for its health benefits. The scene is set in a dimly lit room . The presence of a potted plant in the background adds a touch of nature and freshness to the scene.	The image shows a man working on scuba diving equipment at Blue Water Divers. The man is sitting at a table , working on a piece of equipment , possibly fixing or adjusting it. The scene is set in a workshop or a store , with various tools and equipment visible in the background.	The image features a man riding a jet ski on a body of water. The jet ski is green and white , and it is being used for recreational purposes. The man is smiling , indicating that he is enjoying his time on the water. The scene is set in a beach area .

Figure 3: LAION raw captions v.s LLaVA refined captions. LLaVA provides high-information-density captions that aid the model in grasping more concepts per iteration and boost text-image alignment efficiency.

2.2 TRAINING STRATEGY DECOMPOSITION

The model's generative capabilities can be gradually optimized by partitioning the training into three stages with different data types.

Stage1: Pixel dependency learning. The current class-guided approach (Peebles & Xie, 2023) has shown exemplary performance in generating semantically coherent and reasonable pixels in individual images. Training a class-conditional image generation model (Peebles & Xie, 2023) for natural images is relatively easy and inexpensive, as explained in Appendix A.5. Additionally, we

find that a suitable initialization can significantly boost training efficiency. Therefore, we boost our model from an ImageNet-pretrained model, and the architecture of our model is designed to be compatible with the pretrained weights.

Stage2: Text-image alignment learning. The primary challenge in transitioning from pretrained class-guided image generation to text-to-image generation is on how to achieve accurate alignment between significantly increased text concepts and images.

This alignment process is not only time-consuming but also inherently challenging. To efficiently facilitate this process, we construct a dataset consisting of precise text-image pairs with high concept density. The data creation pipeline will be described in Section 2.4. By employing accurate and information-rich data, our training process can efficiently handle a larger number of nouns in each iteration while encountering considerably less ambiguity compared to previous datasets. This strategic approach empowers our network to align textual descriptions with images effectively.

Stage3: High-resolution and aesthetic image generation. In the third stage, we fine-tune our model using high-quality aesthetic data for high-resolution image generation. Remarkably, we observe that the adaptation process in this stage converges significantly faster, primarily owing to the strong prior knowledge established in the preceding stages.

Decoupling the training process into different stages significantly alleviates the training difficulties and achieves highly efficient training.

2.3 EFFICIENT T2I TRANSFORMER

PIXART- α adopts the Diffusion Transformer (DiT) (Peebles & Xie, 2023) as the base architecture and innovatively tailors the Transformer blocks to handle the unique challenges of T2I tasks, as depicted in Figure 4. Several dedicated designs are proposed as follows:

- *Cross-Attention layer.* We incorporate a multi-head cross-attention layer to the DiT block. It is positioned between the self-attention layer and feed-forward layer so that the model can flexibly interact with the text embedding extracted from the language model. To facilitate the pretrained weights, we initialize the output projection layer in the cross-attention layer to zero, effectively acting as an identity mapping and preserving the input for the subsequent layers.
- *AdaLN-single.* We find that the linear projections in the adaptive normalization layers (Perez et al., 2018) (*adaLN*) module of the DiT account for a substantial proportion (27%) of the parameters. Such a large number of parameters is not useful since the class condition is not employed for our T2I model. Thus, we propose *adaLN-single*, which only uses time embedding as input in the first block for independent control (shown on the right side of Figure 4). Specifically, in the i th block, let $S^{(i)} = [\beta_1^{(i)}, \beta_2^{(i)}, \gamma_1^{(i)}, \gamma_2^{(i)}, \alpha_1^{(i)}, \alpha_2^{(i)}]$ be a tuple of all the scales and shift parameters in *adaLN*. In the DiT, $S^{(i)}$ is obtained through a block-specific MLP $S^{(i)} = f^{(i)}(c+t)$, where c and t denotes the class condition and time embedding, respectively. However, in *adaLN-single*, one global set of shifts and scales are computed as $\bar{S} = f(t)$ only at the first block which is shared across all the blocks. Then, $S^{(i)}$ is obtained as $S^{(i)} = g(\bar{S}, E^{(i)})$, where g is a summation function, and $E^{(i)}$ is a layer-specific trainable embedding with the same shape as \bar{S} , which adaptively adjusts the scale and shift parameters in different blocks.

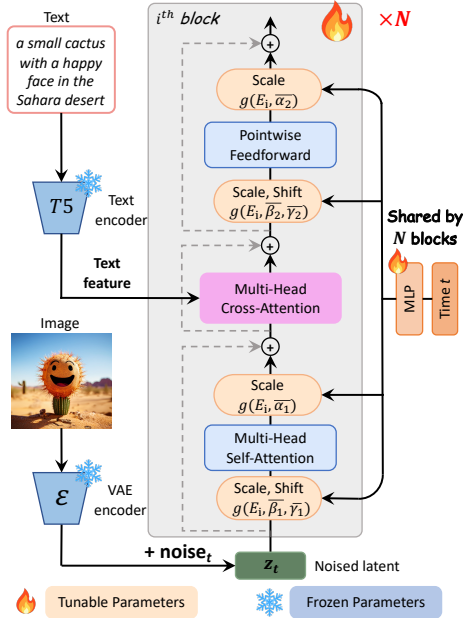


Figure 4: Model architecture of PIXART- α . A cross-attention module is integrated into each block to inject textual conditions. To optimize efficiency, all blocks share the same *adaLN-single* parameters for time conditions.

- *Re-parameterization.* To utilize the aforementioned pretrained weights, all $E^{(i)}$'s are initialized to values that yield the same $S^{(i)}$ as the DiT without c for a selected t (empirically, we use $t = 500$). This design effectively replaces the layer-specific MLPs with a global MLP and layer-specific trainable embeddings while preserving compatibility with the pretrained weights.

Experiments demonstrate that incorporating a global MLP and layer-wise embeddings for time-step information, as well as cross-attention layers for handling textual information, persists the model’s generative abilities while effectively reducing its size.

2.4 DATASET CONSTRUCTION

Image-text pair auto-labeling. The captions of the LAION dataset exhibit various issues, such as text-image misalignment, deficient descriptions, and infrequent vocabulary as shown in Figure 3. To generate captions with high information density, we leverage the state-of-the-art vision-language model LLaVA (Liu et al., 2023). Employing the prompt, “Describe this image and its style in a very detailed manner”, we have significantly improved the quality of captions, as shown in Figure 3.

However, it is worth noting that the LAION dataset predominantly comprises of simplistic product previews from shopping websites, which are not ideal for training text-to-image generation that seeks diversity in object combinations. Consequently, we have opted to utilize the SAM dataset (Kirillov et al., 2023), which is originally used for segmentation tasks but features imagery rich in diverse objects. By applying LLaVA to SAM, we have successfully acquired high-quality text-image pairs characterized by a high concept density, as shown in Figure 10 and Figure 11 in the Appendix.

In the third stage, we construct our training dataset by incorporating JourneyDB (Pan et al., 2023) and a 10M internal dataset to enhance the aesthetic quality of generated images beyond realistic photographs. Refer to Appendix A.5 for details.

As a result, we show the vocabulary analysis (NLTK, 2023) in Table 1, and we define the valid distinct nouns as those appearing more than 10 times in the dataset. We apply LLaVA on LAION to generate LAION-LLaVA. The LAION dataset has 2.46 M distinct nouns, but only 8.5% are valid. This valid noun proportion significantly increases from 8.5% to 13.3% with LLaVA-labeled captions. Despite

Table 1: Statistics of noun concepts for different datasets. **VN**: valid distinct nouns (appearing more than 10 times); **DN**: total distinct nouns; **Average**: average noun count per image.

Dataset	VN/DN	Total Noun	Average
LAION	210K/2461K = 8.5%	72.0M	6.4/Img
LAION-LLaVA	85K/646K = 13.3%	233.9M	20.9/Img
SAM-LLaVA	23K/124K = 18.6%	327.9M	29.3/Img
Internal	152K/582K = 26.1%	136.6M	12.2/Img

LAION’s original captions containing a staggering 210K distinct nouns, its total noun number is a mere 72M. However, LAION-LLaVA contains 234M noun numbers with 85K distinct nouns, and the average number of nouns per image increases from 6.4 to 21, indicating the incompleteness of the original LAION captions. Additionally, SAM-LLaVA outperforms LAION-LLaVA with a total noun number of 328M and 30 nouns per image, demonstrating SAM contains richer objectives and superior informative density per image. Lastly, the internal data also ensures sufficient valid nouns and average information density for fine-tuning. LLaVA-labeled captions significantly increase the valid ratio and average noun count per image, improving concept density.

3 EXPERIMENT

This section begins by outlining the detailed training and evaluation protocols. Subsequently, we provide comprehensive comparisons across three main metrics. We then delve into the critical designs implemented in PIXART- α to achieve superior efficiency and effectiveness through ablation studies. Finally, we demonstrate the versatility of our PIXART- α through application extensions.

3.1 IMPLEMENTATION DETAILS

Training Details. We follow Imagen (Saharia et al., 2022) and DeepFloyd (DeepFloyd, 2023) to employ the T5 large language model (*i.e.*, 4.3B Flan-T5-XXL) as the text encoder for conditional

Table 2: We thoroughly compare the PIXART- α with recent T2I models, considering several essential factors: model size, the total volume of training images, COCO FID-30K scores (zero-shot), and the computational cost (GPU days³). Our highly effective approach significantly reduces resource consumption, including training data usage and training time. The baseline data is sourced from GigaGAN (Kang et al., 2023). ‘+’ in the table denotes an unknown internal dataset size.

Method	Type	#Params	#Images	FID-30K↓	GPU days
DALL-E	Diff	12.0B	250M	27.50	-
GLIDE	Diff	5.0B	250M	12.24	-
LDM	Diff	1.4B	400M	12.64	-
DALL-E 2	Diff	6.5B	650M	10.39	41,667 A100
SDv1.5	Diff	0.9B	2000M	9.62	6,250 A100
GigaGAN	GAN	0.9B	2700M	9.09	4,783 A100
Imagen	Diff	3.0B	860M	7.27	7,132 A100
RAPHAEL	Diff	3.0B	5000M+	6.61	60,000 A100
PIXART- α	Diff	0.6B	25M	7.32	753 A100

feature extraction, and use DiT-XL/2 (Peebles & Xie, 2023) as our base network architecture. Unlike previous works that extract a standard and fixed 77 text tokens, we adjust the length of extracted text tokens to 120, as the caption curated in PIXART- α is much denser to provide more fine-grained details. To capture the latent features of input images, we employ a pre-trained and frozen VAE from LDM (Rombach et al., 2022). Before feeding the images into the VAE, we resize and center-crop them to have the same size. We also employ multi-aspect augmentation introduced in SDXL (Podell et al., 2023) to enable arbitrary aspect image generation. The AdamW optimizer (Loshchilov & Hutter, 2017) is utilized with a weight decay of 0.03 and a constant $2e-5$ learning rate. Our final model is trained on 64 V100 for approximately 26 days. See more details in Appendix A.5.

Evaluation Metrics. We comprehensively evaluate PIXART- α via three primary metrics, *i.e.*, Fréchet Inception Distance (FID) (Heusel et al., 2017) on MSCOCO dataset (Lin et al., 2014), compositionality on T2I-CompBench (Huang et al., 2023), and human-preference rate on user study.

3.2 PERFORMANCE COMPARISONS AND ANALYSIS

Fidelity Assessment. The FID is a metric to evaluate the quality of generated images. The comparison between our method and other methods in terms of FID and their training time is summarized in Table 2. When tested for zero-shot performance on the COCO dataset, PIXART- α achieves a FID score of 7.32. It is particularly notable as it is accomplished in merely 12% of the training time (753 *vs.* 6250 A100 GPU days) and merely 1.25% of the training samples (25M *vs.* 2B images) relative to the second most efficient method. Compared to state-of-the-art methods typically trained using substantial resources, PIXART- α remarkably consumes approximately 2% of the training resources while achieving a comparable FID performance. Although the best-performing model (RAPHAEL) exhibits a lower FID, it relies on unaffordable resources (*i.e.*, $200\times$ more training samples, $80\times$ longer training time, and $5\times$ more network parameters than PIXART- α). We argue that FID may not be an appropriate metric for image quality evaluation, and it is more appropriate to use the evaluation of human users, as stated in Appendix A.8. We leave scaling of PIXART- α for future exploration for performance enhancement.

Alignment Assessment. Beyond the above evaluation, we also assess the alignment between the generated images and text condition using T2I-Compbench (Huang et al., 2023), a comprehensive benchmark for evaluating the compositional text-to-image generation capability. As depicted in Table 3, we evaluate several crucial aspects, including attribute binding, object relationships, and complex compositions. PIXART- α exhibited outstanding performance across nearly all (5/6) evaluation metrics. This remarkable performance is primarily attributed to the text-image alignment learning in Stage 2 training described in Section 2.2, where high-quality text-image pairs were leveraged to achieve superior alignment capabilities.

³To ensure fairness, we convert the V100 GPU days (1656) of our training to A100 GPU days (753), assuming a $2.2\times$ speedup in U-Net training on A100 compared to V100, or equivalent to 332 A100 GPU days with a $5\times$ speedup in Transformer training, as per Rombach et al. (2022); NVIDIA (2023).

Table 3: Alignment evaluation on T2I-CompBench. PIXART- α demonstrated exceptional performance in attribute binding, object relationships, and complex compositions, indicating our method achieves superior compositional generation ability. We highlight the best value in blue, and the second-best value in green. The baseline data are sourced from Huang et al. (2023).

Model	Attribute Binding			Object Relationship		Complex \uparrow
	Color \uparrow	Shape \uparrow	Texture \uparrow	Spatial \uparrow	Non-Spatial \uparrow	
Stable v1.4	0.3765	0.3576	0.4156	0.1246	0.3079	0.3080
Stable v2	0.5065	0.4221	0.4922	0.1342	0.3096	0.3386
Composable v2	0.4063	0.3299	0.3645	0.0800	0.2980	0.2898
Structured v2	0.4990	0.4218	0.4900	0.1386	0.3111	0.3355
Attn-Exct v2	0.6400	0.4517	0.5963	0.1455	0.3109	0.3401
GORS	0.6603	0.4785	0.6287	0.1815	0.3193	0.3328
Dalle-2	0.5267	0.4747	0.5804	0.1283	0.3078	0.2967
SDXL	0.5879	0.4687	0.5299	0.2133	0.3119	0.3237
PIXART- α	0.6690	0.4927	0.6477	0.2064	0.3197	0.3433

User Study. While quantitative evaluation metrics measure the overall distribution of two image sets, they may not comprehensively evaluate the visual quality of the images. Consequently, we conducted a user study to supplement our evaluation and provide a more intuitive assessment of PIXART- α 's performance. Since user study involves human evaluators and can be time-consuming, we selected the top-performing models, namely DALLE-2, SDv2, SDXL, and DeepFloyd, which are accessible through APIs and capable of generating images.

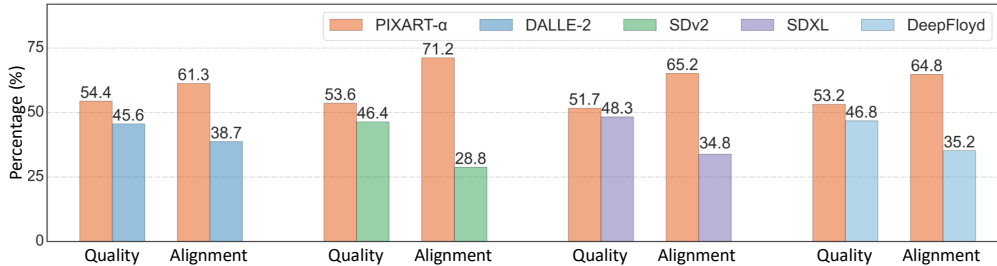


Figure 5: User study on 300 fixed prompts from Feng et al. (2023). The ratio values indicate the percentages of participants preferring the corresponding model. PIXART- α achieves a superior performance in both quality and alignment.

For each model, we employ a consistent set of 300 prompts from Feng et al. (2023) to generate images. These images are then distributed among 50 individuals for evaluation. Participants are asked to rank each model based on the perceptual quality of the generated images and the precision of alignments between the text prompts and the corresponding images. The results presented in Figure 5 clearly indicate that PIXART- α excels in both higher fidelity and superior alignment. For example, compared to SDv2, a current top-tier T2I model, PIXART- α exhibits a 7.2% improvement in image quality and a substantial 42.4% enhancement in alignment.

3.3 ABLATION STUDY

We then conduct ablation studies on the crucial modifications discussed in Section 2.3, including structure modifications and re-parameterization design. In Figure 6, we provide visual results and perform a FID analysis. We randomly choose 8 prompts from the SAM test set for visualization and compute the zero-shot FID-5K score on the SAM dataset. Details are described below.

“*w/o re-param*” results are generated from the model trained from scratch without re-parameterization design. We supplemented with an additional 200K iterations to compensate for the missing iterations from the pretraining stage for a fair comparison. “*adaLN*” results are from the model following the DiT structure to use the sum of time and text feature as input to the MLP layer for the scale and shift parameters within each block. “*adaLN-single*” results are obtained from the model using Transformer blocks with the *adaLN-single* module in Section 2.3. In both “*adaLN*” and “*adaLN-single*”, we employ the re-parameterization design and training for 200K iterations.

As depicted in Figure 6, despite “*adaLN*” performing lower FID, its visual results are on par with our “*adaLN-single*” design. The GPU memory consumption of “*adaLN*” is 29GB, whereas “*adaLN-*



Figure 6: **Left:** Visual comparison of ablation studies are presented. **Right:** Zero-shot FID-2K on SAM, and GPU memory usage. Our method is on par with the “*adaLN*” and saves 21% in GPU memory. Better zoom in 200%.

single” achieves a reduction to 23GB, saving 21% in GPU memory consumption. Furthermore, considering the model parameters, the “*adaLN*” method consumes 833M, whereas our approach reduces to a mere 611M, resulting in an impressive 26% reduction. “*adaLN-single-L (Ours)*” results are generated from the model with same setting as “*adaLN-single*”, but training for a Longer training period of 1500K iterations. Considering memory and parameter efficiency, we incorporate the “*adaLN-single-L*” into our final design.

The visual results clearly indicate that, although the differences in FID scores between the “*adaLN*” and “*adaLN-single*” models are relatively small, a significant discrepancy exists in their visual outcomes. The “*w/o re-param*” model consistently displays distorted target images and lacks crucial details across the entire test set.

4 RELATED WORK

We review related works in three aspects: Denoising diffusion probabilistic models (DDPM), Latent Diffusion Model, and Diffusion Transformer. More related works can be found in Appendix A.1. DDPMs (Ho et al., 2020; Sohl-Dickstein et al., 2015) have emerged as highly successful approaches for image generation, which employs an iterative denoising process to transform Gaussian noise into an image. Latent Diffusion Model (Rombach et al., 2022) enhances the traditional DDPMs by employing score-matching on the image latent space and introducing cross-attention-based controlling. Witnessed the success of Transformer architecture on many computer vision tasks, Diffusion Transformer (DiT) (Peebles & Xie, 2023) and its variant (Bao et al., 2023; Zheng et al., 2023) further replace the Convolutional-based U-Net (Ronneberger et al., 2015) backbone with Transformers for increased scalability (Chen et al., 2023).

5 CONCLUSION

In this paper, we introduced PIXART- α , a Transformer-based text-to-image (T2I) diffusion model, which achieves superior image generation quality while significantly reducing training costs and CO₂ emissions. Our three core designs, including the training strategy decomposition, efficient T2I Transformer and high-informative data, contribute to the success of PIXART- α . Through extensive experiments, we have demonstrated that PIXART- α achieves near-commercial application standards in image generation quality. With the above designs, PIXART- α provides new insights to the AIGC community and startups, enabling them to build their own high-quality yet low-cost T2I models. We hope that our work inspires further innovation and advancements in this field.

Acknowledgement. We would like to express our gratitude to Shuchen Xue for identifying and correcting the FID score in the paper. This research was supported in part by the Research Grants Council of the Hong Kong Special Administrative Region (Grant 16200021).

REFERENCES

- Anne-Laure Ligozat Alexandra Sasha Luccioni, Sylvain Vigui er. Estimating the carbon footprint of bloom, a 176b parameter language model. In *arXiv preprint arXiv:2211.02001*, 2022.
- Yogesh Balaji, Seungjun Nah, Xun Huang, Arash Vahdat, Jiaming Song, Karsten Kreis, Miika Aittala, Timo Aila, Samuli Laine, Bryan Catanzaro, et al. ediffi: Text-to-image diffusion models with an ensemble of expert denoisers. In *arXiv*, 2022.
- Fan Bao, Shen Nie, Kaiwen Xue, Yue Cao, Chongxuan Li, Hang Su, and Jun Zhu. All are worth words: A vit backbone for diffusion models. In *CVPR*, 2023.
- Eyal Betzalel, Coby Penso, Aviv Navon, and Ethan Fetaya. A study on the evaluation of generative models. In *arXiv*, 2022.
- Nicolas Carion, Francisco Massa, Gabriel Synnaeve, Nicolas Usunier, Alexander Kirillov, and Sergey Zagoruyko. End-to-end object detection with transformers. In *ECCV*, 2020.
- Shoufa Chen, Mengmeng Xu, Jiawei Ren, Yuren Cong, Sen He, Yanping Xie, Animesh Sinha, Ping Luo, Tao Xiang, and Juan-Manuel Perez-Rua. Gentrion: Delving deep into diffusion transformers for image and video generation. *arXiv preprint arXiv:2312.04557*, 2023.
- DeepFloyd. Deepfloyd, 2023. URL <https://www.deepfloyd.ai/>.
- Jia Deng, Wei Dong, Richard Socher, Li-Jia Li, Kai Li, and Li Fei-Fei. Imagenet: A large-scale hierarchical image database. In *2009 IEEE conference on computer vision and pattern recognition*, pp. 248–255. Ieee, 2009.
- Prafulla Dhariwal and Alexander Nichol. Diffusion models beat gans on image synthesis. *Advances in neural information processing systems*, 34:8780–8794, 2021.
- Alexey Dosovitskiy, Lucas Beyer, Alexander Kolesnikov, Dirk Weissenborn, Xiaohua Zhai, Thomas Unterthiner, Mostafa Dehghani, Matthias Minderer, Georg Heigold, Sylvain Gelly, et al. An image is worth 16x16 words: Transformers for image recognition at scale. In *ICLR*, 2020a.
- Alexey Dosovitskiy, Lucas Beyer, Alexander Kolesnikov, Dirk Weissenborn, Xiaohua Zhai, Thomas Unterthiner, Mostafa Dehghani, Matthias Minderer, Georg Heigold, Sylvain Gelly, et al. An image is worth 16x16 words: Transformers for image recognition at scale. In *arXiv*, 2020b.
- Zhida Feng, Zhenyu Zhang, Xintong Yu, Yewei Fang, Lanxin Li, Xuyi Chen, Yuxiang Lu, Jiaxiang Liu, Weichong Yin, Shikun Feng, et al. Ernie-vilg 2.0: Improving text-to-image diffusion model with knowledge-enhanced mixture-of-denoising-experts. In *CVPR*, 2023.
- Chongjian Ge, Junsong Chen, Enze Xie, Zhongdao Wang, Lanqing Hong, Huchuan Lu, Zhenguo Li, and Ping Luo. Metabev: Solving sensor failures for 3d detection and map segmentation. In *Proceedings of the IEEE/CVF International Conference on Computer Vision*, pp. 8721–8731, 2023.
- Rohit Girdhar, Alaaeldin El-Nouby, Zhuang Liu, Mannat Singh, Kalyan Vasudev Alwala, Armand Joulin, and Ishan Misra. Imagebind: One embedding space to bind them all. In *Proceedings of the IEEE/CVF Conference on Computer Vision and Pattern Recognition*, pp. 15180–15190, 2023.
- Ian Goodfellow, Jean Pouget-Abadie, Mehdi Mirza, Bing Xu, David Warde-Farley, Sherjil Ozair, Aaron Courville, and Yoshua Bengio. Generative adversarial nets. In *NeurIPS*, 2014.
- Kai Han, An Xiao, Enhua Wu, Jianyuan Guo, Chunjing Xu, and Yunhe Wang. Transformer in transformer. *NeurIPS*, 2021.
- Kaiming He, Xinlei Chen, Saining Xie, Yanghao Li, Piotr Doll ar, and Ross Girshick. Masked autoencoders are scalable vision learners. In *CVPR*, 2022.

- Martin Heusel, Hubert Ramsauer, Thomas Unterthiner, Bernhard Nessler, and Sepp Hochreiter. Gans trained by a two time-scale update rule converge to a local nash equilibrium. In *NeurIPS*, 2017.
- Jonathan Ho and Tim Salimans. Classifier-free diffusion guidance. *arXiv preprint arXiv:2207.12598*, 2022.
- Jonathan Ho, Ajay Jain, and Pieter Abbeel. Denoising diffusion probabilistic models. In *NeurIPS*, 2020.
- Edward J Hu, Phillip Wallis, Zeyuan Allen-Zhu, Yuanzhi Li, Shean Wang, Lu Wang, Weizhu Chen, et al. Lora: Low-rank adaptation of large language models. In *ICLR*, 2021.
- Kaiyi Huang, Kaiyue Sun, Enze Xie, Zhenguo Li, and Xihui Liu. T2i-compbench: A comprehensive benchmark for open-world compositional text-to-image generation. In *ICCV*, 2023.
- Minguk Kang, Jun-Yan Zhu, Richard Zhang, Jaesik Park, Eli Shechtman, Sylvain Paris, and Taesung Park. Scaling up gans for text-to-image synthesis. In *CVPR*, 2023.
- Gwanghyun Kim, Taesung Kwon, and Jong Chul Ye. Diffusionclip: Text-guided diffusion models for robust image manipulation. In *Proceedings of the IEEE/CVF Conference on Computer Vision and Pattern Recognition (CVPR)*, pp. 2426–2435, June 2022.
- Diederik P Kingma and Max Welling. Auto-encoding variational bayes. In *arXiv*, 2013.
- Alexander Kirillov, Eric Mintun, Nikhila Ravi, Hanzi Mao, Chloe Rolland, Laura Gustafson, Tete Xiao, Spencer Whitehead, Alexander C Berg, Wan-Yen Lo, et al. Segment anything. In *ICCV*, 2023.
- Yuval Kirstain, Adam Polyak, Uriel Singer, Shahbuland Matiana, Joe Penna, and Omer Levy. Pick-a-pic: An open dataset of user preferences for text-to-image generation. In *arXiv*, 2023.
- Zhiqi Li, Wenhai Wang, Hongyang Li, Enze Xie, Chonghao Sima, Tong Lu, Yu Qiao, and Jifeng Dai. Bevformer: Learning bird’s-eye-view representation from multi-camera images via spatiotemporal transformers. In *ECCV*, 2022a.
- Zhiqi Li, Wenhai Wang, Enze Xie, Zhiding Yu, Anima Anandkumar, Jose M Alvarez, Ping Luo, and Tong Lu. Panoptic segformer: Delving deeper into panoptic segmentation with transformers. In *CVPR*, 2022b.
- Tsung-Yi Lin, Michael Maire, Serge Belongie, James Hays, Pietro Perona, Deva Ramanan, Piotr Dollár, and C Lawrence Zitnick. Microsoft coco: Common objects in context. In *ECCV*, 2014.
- Haotian Liu, Chunyuan Li, Qingyang Wu, and Yong Jae Lee. Visual instruction tuning. In *arXiv*, 2023.
- Ze Liu, Yutong Lin, Yue Cao, Han Hu, Yixuan Wei, Zheng Zhang, Stephen Lin, and Baining Guo. Swin transformer: Hierarchical vision transformer using shifted windows. In *ICCV*, 2021.
- Ze Liu, Jia Ning, Yue Cao, Yixuan Wei, Zheng Zhang, Stephen Lin, and Han Hu. Video swin transformer. In *CVPR*, 2022.
- Ilya Loshchilov and Frank Hutter. Decoupled weight decay regularization. In *arXiv*, 2017.
- Cheng Lu, Yuhao Zhou, Fan Bao, Jianfei Chen, Chongxuan Li, and Jun Zhu. Dpm-solver: A fast ode solver for diffusion probabilistic model sampling in around 10 steps. *Advances in Neural Information Processing Systems*, 35:5775–5787, 2022.
- Microsoft. Gpu selling, 2023. URL <https://www.leadergpu.com/>.
- Midjourney. Midjourney, 2023. URL <https://www.midjourney.com>.
- Chong Mou, Xintao Wang, Liangbin Xie, Jian Zhang, Zhongang Qi, Ying Shan, and Xiaohu Qie. T2i-adapter: Learning adapters to dig out more controllable ability for text-to-image diffusion models. In *arXiv*, 2023.

- Alexander Quinn Nichol and Prafulla Dhariwal. Improved denoising diffusion probabilistic models. In *International Conference on Machine Learning*, pp. 8162–8171. PMLR, 2021.
- NLTK. Nltk, 2023. URL <https://www.nltk.org/>.
- NVIDIA. Getting immediate speedups with a100 and tf32, 2023. URL <https://developer.nvidia.com/blog/getting-immediate-speedups-with-a100-tf32>.
- OpenAI. Dalle-2, 2023. URL <https://openai.com/dall-e-2>.
- Junting Pan, Keqiang Sun, Yuying Ge, Hao Li, Haodong Duan, Xiaoshi Wu, Renrui Zhang, Aojun Zhou, Zipeng Qin, Yi Wang, Jifeng Dai, Yu Qiao, and Hongsheng Li. Journeydb: A benchmark for generative image understanding. In *arXiv*, 2023.
- William Peebles and Saining Xie. Scalable diffusion models with transformers. In *ICCV*, 2023.
- Ethan Perez, Florian Strub, Harm De Vries, Vincent Dumoulin, and Aaron Courville. Film: Visual reasoning with a general conditioning layer. In *Proceedings of the AAAI conference on artificial intelligence*, volume 32, 2018.
- Dustin Podell, Zion English, Kyle Lacey, Andreas Blattmann, Tim Dockhorn, Jonas Müller, Joe Penna, and Robin Rombach. Sdxl: Improving latent diffusion models for high-resolution image synthesis. In *arXiv*, 2023.
- Ben Poole, Ajay Jain, Jonathan T. Barron, and Ben Mildenhall. Dreamfusion: Text-to-3d using 2d diffusion. *arXiv*, 2022.
- Alec Radford, Karthik Narasimhan, Tim Salimans, Ilya Sutskever, et al. Improving language understanding by generative pre-training. *OpenAI blog*, 2018.
- Alec Radford, Jeffrey Wu, Rewon Child, David Luan, Dario Amodei, Ilya Sutskever, et al. Language models are unsupervised multitask learners. *OpenAI blog*, 2019.
- Danilo Rezende and Shakir Mohamed. Variational inference with normalizing flows. In *ICML*, 2015.
- Robin Rombach, Andreas Blattmann, Dominik Lorenz, Patrick Esser, and Björn Ommer. High-resolution image synthesis with latent diffusion models. In *CVPR*, 2022.
- Olaf Ronneberger, Philipp Fischer, and Thomas Brox. U-net: Convolutional networks for biomedical image segmentation. In *MICCAI*, 2015.
- Nataniel Ruiz, Yuanzhen Li, Varun Jampani, Yael Pritch, Michael Rubinstein, and Kfir Aberman. Dreambooth: Fine tuning text-to-image diffusion models for subject-driven generation. In *arXiv*, 2022.
- Chitwan Saharia, William Chan, Saurabh Saxena, Lala Li, Jay Whang, Emily L Denton, Kamyar Ghasemipour, Raphael Gontijo Lopes, Burcu Karagol Ayan, Tim Salimans, et al. Photorealistic text-to-image diffusion models with deep language understanding. In *NeurIPS*, 2022.
- Christoph Schuhmann, Richard Vencu, Romain Beaumont, Robert Kaczmarczyk, Clayton Mullis, Aarush Katta, Theo Coombes, Jenia Jitsev, and Aran Komatsuzaki. Laion-400m: Open dataset of clip-filtered 400 million image-text pairs. In *arXiv*, 2021.
- Jascha Sohl-Dickstein, Eric Weiss, Niru Maheswaranathan, and Surya Ganguli. Deep unsupervised learning using nonequilibrium thermodynamics. In *ICML*, 2015.
- Yang Song and Stefano Ermon. Generative modeling by estimating gradients of the data distribution. In *NeurIPS*, 2019.
- Yang Song, Jascha Sohl-Dickstein, Diederik P Kingma, Abhishek Kumar, Stefano Ermon, and Ben Poole. Score-based generative modeling through stochastic differential equations. In *ICLR*, 2021.
- Robin Strudel, Ricardo Garcia, Ivan Laptev, and Cordelia Schmid. Segmenter: Transformer for semantic segmentation. In *ICCV*, 2021.

- Peize Sun, Jinkun Cao, Yi Jiang, Rufeng Zhang, Enze Xie, Zehuan Yuan, Changhu Wang, and Ping Luo. Transtrack: Multiple object tracking with transformer. In *arXiv*, 2020.
- Hugo Touvron, Matthieu Cord, Matthijs Douze, Francisco Massa, Alexandre Sablayrolles, and Hervé Jégou. Training data-efficient image transformers & distillation through attention. In *ICML*, 2021.
- Ashish Vaswani, Noam Shazeer, Niki Parmar, Jakob Uszkoreit, Llion Jones, Aidan N Gomez, Łukasz Kaiser, and Illia Polosukhin. Attention is all you need. In *NeurIPS*, 2017.
- Wenhai Wang, Enze Xie, Xiang Li, Deng-Ping Fan, Kaitao Song, Ding Liang, Tong Lu, Ping Luo, and Ling Shao. Pyramid vision transformer: A versatile backbone for dense prediction without convolutions. In *ICCV*, 2021.
- Wenhai Wang, Enze Xie, Xiang Li, Deng-Ping Fan, Kaitao Song, Ding Liang, Tong Lu, Ping Luo, and Ling Shao. Pvt v2: Improved baselines with pyramid vision transformer. *Computational Visual Media*, 2022.
- Jay Zhangjie Wu, Yixiao Ge, Xintao Wang, Stan Weixian Lei, Yuchao Gu, Wynne Hsu, Ying Shan, Xiaohu Qie, and Mike Zheng Shou. Tune-a-video: One-shot tuning of image diffusion models for text-to-video generation. *arXiv preprint arXiv:2212.11565*, 2022.
- Enze Xie, Wenhai Wang, Zhiding Yu, Anima Anandkumar, Jose M Alvarez, and Ping Luo. Segformer: Simple and efficient design for semantic segmentation with transformers. *Advances in Neural Information Processing Systems*, 34:12077–12090, 2021.
- Enze Xie, Lewei Yao, Han Shi, Zhili Liu, Daquan Zhou, Zhaoqiang Liu, Jiawei Li, and Zhenguo Li. Difffit: Unlocking transferability of large diffusion models via simple parameter-efficient fine-tuning. In *ICCV*, 2023.
- Saining Xie and Zhuowen Tu. Holistically-nested edge detection. In *ICCV*, 2015.
- Shuchen Xue, Mingyang Yi, Weijian Luo, Shifeng Zhang, Jiacheng Sun, Zhenguo Li, and Zhi-Ming Ma. Sa-solver: Stochastic adams solver for fast sampling of diffusion models. *arXiv preprint arXiv:2309.05019*, 2023a.
- Zeyue Xue, Guanglu Song, Qiushan Guo, Boxiao Liu, Zhuofan Zong, Yu Liu, and Ping Luo. Raphael: Text-to-image generation via large mixture of diffusion paths. In *arXiv*, 2023b.
- Li Yuan, Yunpeng Chen, Tao Wang, Weihao Yu, Yujun Shi, Zi-Hang Jiang, Francis EH Tay, Jiashi Feng, and Shuicheng Yan. Tokens-to-token vit: Training vision transformers from scratch on imagenet. In *ICCV*, 2021.
- Lvmin Zhang, Anyi Rao, and Maneesh Agrawala. Adding conditional control to text-to-image diffusion models. In *ICCV*, 2023.
- Hengshuang Zhao, Li Jiang, Jiaya Jia, Philip HS Torr, and Vladlen Koltun. Point transformer. In *ICCV*, 2021.
- Hongkai Zheng, Weili Nie, Arash Vahdat, and Anima Anandkumar. Fast training of diffusion models with masked transformers. In *arXiv*, 2023.
- Sixiao Zheng, Jiachen Lu, Hengshuang Zhao, Xiatian Zhu, Zekun Luo, Yabiao Wang, Yanwei Fu, Jianfeng Feng, Tao Xiang, Philip HS Torr, et al. Rethinking semantic segmentation from a sequence-to-sequence perspective with transformers. In *CVPR*, 2021.
- Daquan Zhou, Bingyi Kang, Xiaojie Jin, Linjie Yang, Xiao Chen Lian, Zihang Jiang, Qibin Hou, and Jiashi Feng. Deepvit: Towards deeper vision transformer. In *arXiv*, 2021.
- Daquan Zhou, Zhiding Yu, Enze Xie, Chaowei Xiao, Animashree Anandkumar, Jiashi Feng, and Jose M Alvarez. Understanding the robustness in vision transformers. In *International Conference on Machine Learning*, pp. 27378–27394. PMLR, 2022.

A APPENDIX

A.1 RELATED WORK

A.1.1 DENOISING DIFFUSION PROBABILISTIC MODELS

Diffusion models (Ho et al., 2020; Sohl-Dickstein et al., 2015) and score-based generative models (Song & Ermon, 2019; Song et al., 2021) have emerged as highly successful approaches for image generation, surpassing previous generative models such as GANs (Goodfellow et al., 2014), VAEs (Kingma & Welling, 2013), and Flow (Rezende & Mohamed, 2015). Unlike traditional models that directly map from a Gaussian distribution to the data distribution, diffusion models employ an iterative denoising process to transform Gaussian noise into an image that follows the data distribution. This process can be reversely learned from an untrainable forward process, where a small amount of Gaussian noise is iteratively added to the original image.

A.1.2 LATENT DIFFUSION MODEL

Latent Diffusion Model (*a.k.a.* Stable diffusion) (Rombach et al., 2022) is a recent advancement in diffusion models. This approach enhances the traditional diffusion model by employing score-matching on the image latent space and introducing cross-attention-based controlling. The results obtained with this approach have been impressive, particularly in tasks involving high-density image generation, such as text-to-image synthesis. This has served as a source of inspiration for numerous subsequent works aimed at improving text-to-image synthesis, including those by Saharia et al. (2022); Balaji et al. (2022); Feng et al. (2023); Xue et al. (2023b); Podell et al. (2023), and others. Additionally, Stable diffusion and its variants have been effectively combined with various low-cost fine-tuning (Hu et al., 2021; Xie et al., 2023) and customization (Zhang et al., 2023; Mou et al., 2023) technologies.

A.1.3 DIFFUSION TRANSFORMER

Transformer architecture (Vaswani et al., 2017) have achieved great success in language models (Radford et al., 2018; 2019), and many recent works (Dosovitskiy et al., 2020a; He et al., 2022) show it is also a promising architecture on many computer vision tasks like image classification (Touvron et al., 2021; Zhou et al., 2021; Yuan et al., 2021; Han et al., 2021), object detection (Liu et al., 2021; Wang et al., 2021; 2022; Ge et al., 2023; Carion et al., 2020), semantic segmentation (Zheng et al., 2021; Xie et al., 2021; Strudel et al., 2021) and so on (Sun et al., 2020; Li et al., 2022b; Zhao et al., 2021; Liu et al., 2022; He et al., 2022; Li et al., 2022a). The Diffusion Transformer (DiT) (Peebles & Xie, 2023) and its variant (Bao et al., 2023; Zheng et al., 2023) follow the step to further replace the Convolutional-based U-Net (Ronneberger et al., 2015) backbone with Transformers. This architectural choice brings about increased scalability (Chen et al., 2023) compared to U-Net-based diffusion models, allowing for the straightforward expansion of its parameters. In our paper, we leverage DiT as a scalable foundational model and adapt it for text-to-image generation tasks.

A.2 PIXART- α vs. MIDJOURNEY

In Figure 7, we present the images generated using PIXART- α and the current SOTA product-level method Midjourney (Midjourney, 2023) with randomly sampled prompts online. Here, we conceal the annotations of images belonging to which method. Readers are encouraged to make assessments based on the prompts provided. The answers will be disclosed at the end of the appendix.

A.3 PIXART- α vs. PRESTIGIOUS DIFFUSION MODELS

In Figure 8 and 9, we present the comparison results using a test prompt selected by RAPHAEL. The instances depicted here exhibit performance that is on par with, or even surpasses, that of existing powerful generative models.

A.4 AUTO-LABELING TECHNIQUES

To generate captions with high information density, we leverage state-of-the-art vision-language models LLaVA (Liu et al., 2023). Employing the prompt, “Describe this image and its style in a very detailed manner”, we have significantly improved the quality of captions. We show the prompt design and process of auto-labeling in Figure 10. More image-text pair samples on the SAM dataset are shown in Figure 11.

A.5 ADDITIONAL IMPLEMENTATION DETAILS

We include detailed information about all of our PIXART- α models in this section. As shown in Table 4, among the 256×256 phases, our model primarily focuses on the text-to-image alignment stage, with less time on fine-tuning and only 1/8 of that time spent on ImageNet pixel dependency.

PIXART- α model details. For the embedding of input timesteps, we employ a 256-dimensional frequency embedding (Dhariwal & Nichol, 2021). This is followed by a two-layer MLP that features a dimensionality matching the transformer’s hidden size, coupled with SiLU activations. We adopt the DiT-XL model, which has 28 Transformer blocks in total for better performance, and the patch size of the PatchEmbed layer in ViT (Dosovitskiy et al., 2020b) is $2\times$.

Multi-scale training. Inspired by Podell et al. (2023), we incorporate the multi-scale training strategy into our pipeline. Specifically, We divide the image size into 40 buckets with different aspect ratios, each with varying aspect ratios ranging from 0.25 to 4, mirroring the method used in SDXL. During optimization, a training batch is composed using images from a single bucket, and we alternate the bucket sizes for each training step. In practice, we only apply multi-scale training in the high-aesthetics stage after pretraining the model at a fixed aspect ratio and resolution (*i.e.* 256px). We adopt the positional encoding trick in DiffFit (Xie et al., 2023) since the image resolution and aspect change during different training stages.

Additional time consumption. Beside the training time discussed in Table 4, data labeling and VAE training may need additional time. We treat the pre-trained VAE as a ready-made component of a model zoo, the same as pre-trained CLIP/T5-XXL text encoder, and our total training process does not include the training of VAE. However, our attempt to train a VAE resulted in an approximate training duration of 25 hours, utilizing 64 V100 GPUs on the OpenImage dataset. As for auto-labeling, we use LLaVA-7B to generate captions. LLaVA’s annotation time on the SAM dataset is approximately 24 hours with 64 V100 GPUs. To ensure a fair comparison, we have temporarily excluded the training time and data quantity of VAE training, T5 training time, and LLaVA auto-labeling time.

Sampling algorithm. In this study, we incorporated three sampling algorithms, namely iD-DPM (Nichol & Dhariwal, 2021), DPM-Solver (Lu et al., 2022), and SA-Solver (Xue et al., 2023a). We observe these three algorithms perform similarly in terms of semantic control, albeit with minor differences in sampling frequency and color representation. To optimize computational efficiency, we ultimately chose to employ the DPM-Solver with 20 inference steps.

Table 4: We report detailed information about every PIXART- α training stage in our paper. Note that HQ (High Quality) dataset here includes 4M JourneyDB (Pan et al., 2023) and 10M internal data. The count of GPU days excludes the time for VAE feature extraction and T5 text feature extraction, as we offline prepare both features in advance so that they are not part of the training process and contribute no extra time to it.

Method	Stage	Image Resolution	#Images	Training Steps (K)	Batch Size	Learning Rate	GPU days (V100)
PIXART- α	Pixel dependency	256×256	1M ImageNet	300	128×8	2×10^{-5}	88
PIXART- α	Text-Image align	256×256	10M SAM	150	178×64	2×10^{-5}	672
PIXART- α	High aesthetics	256×256	14M HQ	90	178×64	2×10^{-5}	416
PIXART- α	High aesthetics	512×512	14M HQ	100	40×64	2×10^{-5}	320
PIXART- α	High aesthetics	1024×1024	14M HQ	16	12×32	2×10^{-5}	160

A.6 HYPER-PARAMETERS ANALYSIS

In Figure 20, we illustrate the variations in the model’s metrics under different configurations across various datasets. we first investigate FID for the model and plot FID-vs-CLIP curves in Figure 20a for 10k text-image paed from MSCOCO. The results show a marginal enhancement over SDv1.5. In Figure 20b and 20c, we demonstrate the corresponding T2ICompBench scores across a range of classifier-free guidance (cfg) (Ho & Salimans, 2022) scales. The outcomes reveal a consistent and commendable model performance under these varying scales.

A.7 MORE IMAGES GENERATED BY PIXART- α

More visual results generated by PIXART- α are shown in Figure 12, 13, and 14. The samples generated by PIXART- α demonstrate outstanding quality, marked by their exceptional fidelity and precision in faithfully adhering to the given textual descriptions. As depicted in Figure 15, PIXART- α demonstrates the ability to synthesize high-resolution images up to 1024×1024 pixels and contains rich details, and is capable of generating images with arbitrary aspect ratios, enhancing its versatility for real-world applications. Figure 16 illustrates PIXART- α ’s remarkable capacity to manipulate image styles through text prompts directly, demonstrating its versatility and creativity.

A.8 DISCUSSION OF FID METRIC FOR EVALUATING IMAGE QUALITY

During our experiments, we observed that the FID (Fréchet Inception Distance) score may not accurately reflect the visual quality of generated images. Recent studies such as SDXL (Podell et al., 2023) and Pick-a-pic (Kirstain et al., 2023) have presented evidence suggesting that the COCO zero-shot FID is negatively correlated with visual aesthetics.

Furthermore, it has been stated by Betzalel et al. (Betzalel et al., 2022) that the feature extraction network used in FID is pretrained on the ImageNet dataset, which exhibits limited overlap with the current text-to-image generation data. Consequently, FID may not be an appropriate metric for evaluating the generative performance of such models, and (Betzalel et al., 2022) recommended employing human evaluators for more suitable assessments.

Thus, we conducted a user study to validate the effectiveness of our method.

A.9 CUSTOMIZED EXTENSION

In text-to-image generation, the ability to customize generated outputs to a specific style or condition is a crucial application. We extend the capabilities of PIXART- α by incorporating two commonly used customization methods: DreamBooth (Ruiz et al., 2022) and ControlNet (Zhang et al., 2023).

DreamBooth. DreamBooth can be seamlessly applied to PIXART- α without further modifications. The process entails fine-tuning PIXART- α using a learning rate of $5e-6$ for 300 steps, without the incorporation of a class-preservation loss.

As depicted in Figure 17a, given a few images and text prompts, PIXART- α demonstrates the capacity to generate high-fidelity images. These images present natural interactions with the environment under various lighting conditions. Additionally, PIXART- α is also capable of precisely modifying the attribute of a specific object such as color, as shown in 17b. Our appealing visual results demonstrate PIXART- α can generate images of exceptional quality and its strong capability for customized extension.

ControlNet. Following the general design of ControlNet (Zhang et al., 2023), we freeze each DiT Block and create a trainable copy, augmenting with two zero linear layers before and after it. The control signal c is obtained by applying the same VAE to the control image and is shared among all blocks. For each block, we process the control signal c by first passing it through the first zero linear layer, adding it to the layer input x , and then feeding it into the trainable copy and the second zero linear layer. The processed control signal is then added to the output y of the frozen block, which is obtained from input x . We trained the ControlNet on HED (Xie & Tu, 2015) signals using a learning rate of $5e-6$ for 20,000 steps.

As depicted in Figure 18, when provided with a reference image and control signals, such as edge maps, we leverage various text prompts to generate a wide range of high-fidelity and diverse images. Our results demonstrate the capacity of PIXART- α to yield personalized extensions of exceptional quality.

A.10 DISCUSSION ON TRANSFORMER vs. U-NET

The Transformer-based network’s superiority over convolutional networks has been widely established in various studies, showcasing attributes such as robustness (Zhou et al., 2022; Xie et al., 2021), effective modality fusion (Girdhar et al., 2023), and scalability (Peebles & Xie, 2023). Similarly, the findings on multi-modality fusion are consistent with our observations in this study compared to the CNN-based generator (U-Net). For instance, Table 3 illustrates that our model, PIXART- α , significantly outperforms prevalent U-Net generators in terms of compositionality. This advantage is not solely due to the high-quality alignment achieved in the second training stage but also to the multi-head attention-based fusion mechanism, which excels at modeling long dependencies. This mechanism effectively integrates compositional semantic information, guiding the generation of vision latent vectors more efficiently and producing images that closely align with the input texts. These findings underscore the unique advantages of Transformer architectures in effectively fusing multi-modal information.

A.11 LIMITATIONS & FAILURE CASES

In Figure 19, we highlight the model’s failure cases in red text and yellow circle. Our analysis reveals the model’s weaknesses in accurately controlling the number of targets and handling specific details, such as features of human hands. Additionally, the model’s text generation capability is somewhat weak due to our data’s limited number of font and letter-related images. We aim to explore these unresolved issues in the generation field, enhancing the model’s abilities in text generation, detail control, and quantity control in the future.

A.12 UNVEIL THE ANSWER

In Figure 7, we present a comparison between PIXART- α and Midjourney and conceal the correspondence between images and their respective methods, inviting the readers to guess. Finally, in Figure 21, we unveil the answer to this question. It is difficult to distinguish between PIXART- α and Midjourney, which demonstrates PIXART- α ’s exceptional performance.



Art collection style and fashion shoot, in the style of made of glass, dark blue and light pink, paul rand, solarpunk, camille vivier, beth didonato hair, barbiecore, hyper-realistic.



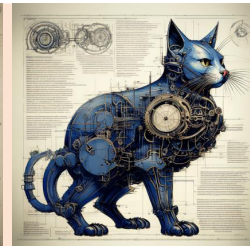
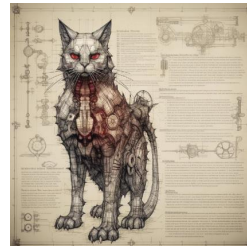
A small cactus with a happy face in the Sahara desert



The image features a woman wearing a red shirt with an icon. She appears to be posing for the camera, and her outfit includes a pair of jeans. The woman seems to be in a good mood, as she is smiling. The background of the image is blurry, focusing more on the woman and her attire.



Pirate ship trapped in a cosmic maelstrom nebula, rendered in cosmic beach whirlpool engine, volumetric lighting, spectacular, ambient lights, light pollution, cinematic atmosphere, art nouveau style, illustration art artwork by SenseiJaye, intricate detail.



poster of a mechanical cat, technical Schematics viewed from front and side view on light white blueprint paper, illustration drafting style, illustration, typography, conceptual art, dark fantasy steampunk, cinematic, dark fantasy.

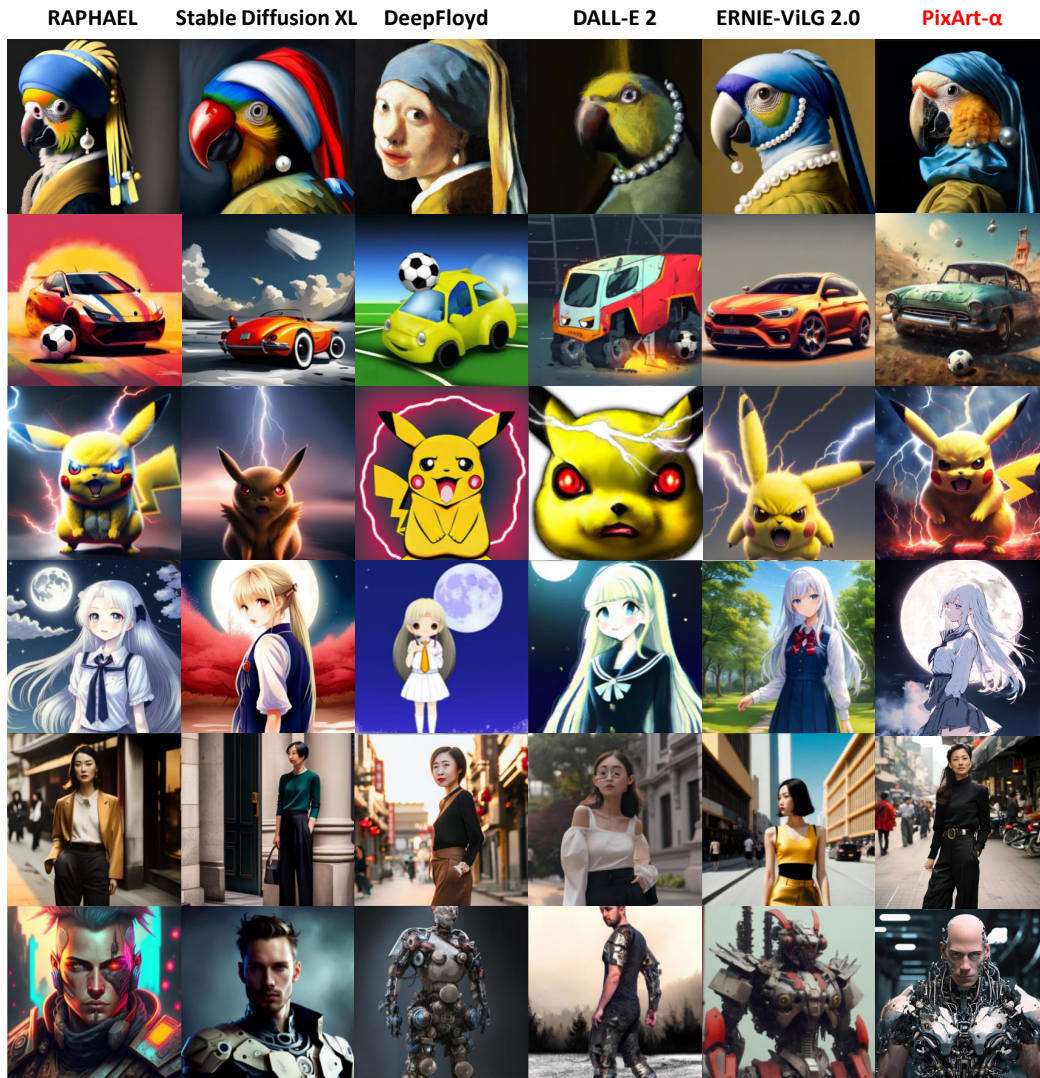


A dog that has been meditating all the time



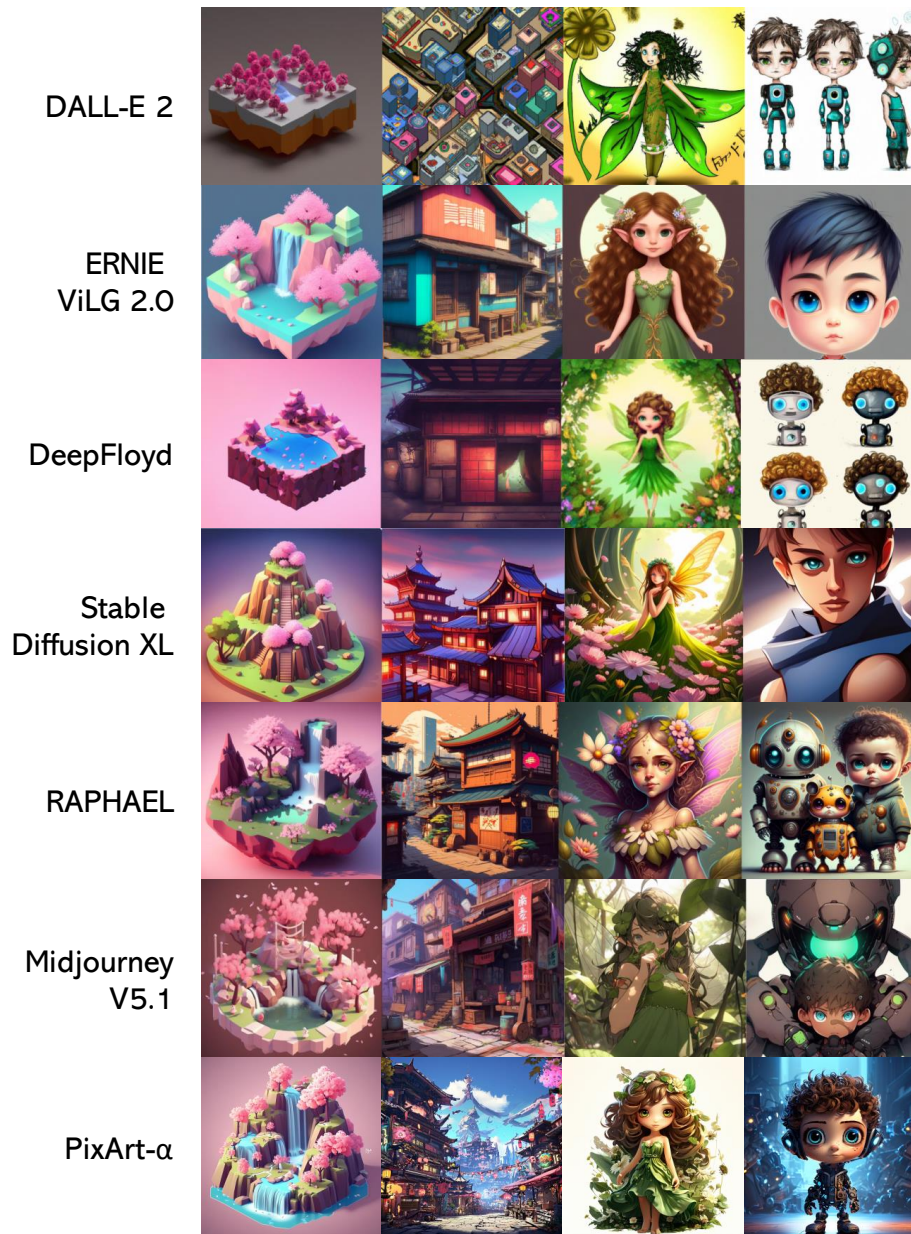
Beautiful scene

Figure 7: Comparisons with Midjourney. The prompts used here are randomly sampled online. To ensure a fair comparison, we select the first result generated by both models. *We encourage readers to guess which image corresponds to Midjourney and which corresponds to PIXART- α . The answer is revealed at the end of the paper.*



1. A parrot with a *pearl earring*, Vermeer style.
2. A car *playing soccer*, digital art.
3. A Pikachu with an *angry* expression and red eyes, with *lightning* around it, hyper realistic style.
4. Moonlight Maiden, cute girl in school uniform, long *white hair*, standing under the *moon*, celluloid style, *Japanese manga style*.
5. Street shot of a fashionable *Chinese lady* in Shanghai, wearing *black* high-waisted *trousers*.
6. Half *human*, half *robot*, repaired human, human flesh warrior, mech display, man in mech, *cyberpunk*.

Figure 8: **Comparisons** of PIXART- α with recent representative generators, Stable Diffusion XL, DeepFloyd, DALL-E 2, ERNIE-ViLG 2.0, and RAPHAEL. They are given the same prompts as in RAPHAEL(Xue et al., 2023b), where the words that the human artists yearn to preserve within the generated images are highlighted in red. The specific prompts for each row are provided at the bottom of the figure. Better zoom in 200%.



1. A cute little matte low poly isometric *cherry blossom forest island, waterfalls*, lighting, soft shadows, trending on Artstation, 3d render, monument valley, fez video game.
2. A shanty version of Tokyo, new rustic style, *bold colors with all colors palette*, video game, genshin, tribe, fantasy, overwatch.
3. Cartoon characters, mini characters, figures, illustrations, flower fairy, green dress, *brown hair, curly long hair, elf-like wings, many flowers and leaves*, natural scenery, *golden eyes*, detailed light and shadow, a high degree of detail.
4. Cartoon characters, mini characters, hand-made, illustrations, *robot kids*, color expressions, boy, *short brown hair, curly hair, blue eyes*, technological age, *cyberpunk*, big eyes, cute, mini, detailed light and shadow, high detail.

Figure 9: The prompts (Xue et al., 2023b) for each column are given in the figure. We give the comparisons between DALL-E 2 Midjourney v5.1, Stable Diffusion XL, ERNIE ViLG 2.0, DeepFloyd, and RAPHAEL. They are given the same prompts, where the words that the human artists yearn to preserve within the generated images are highlighted in red. Better zoom in 200%.

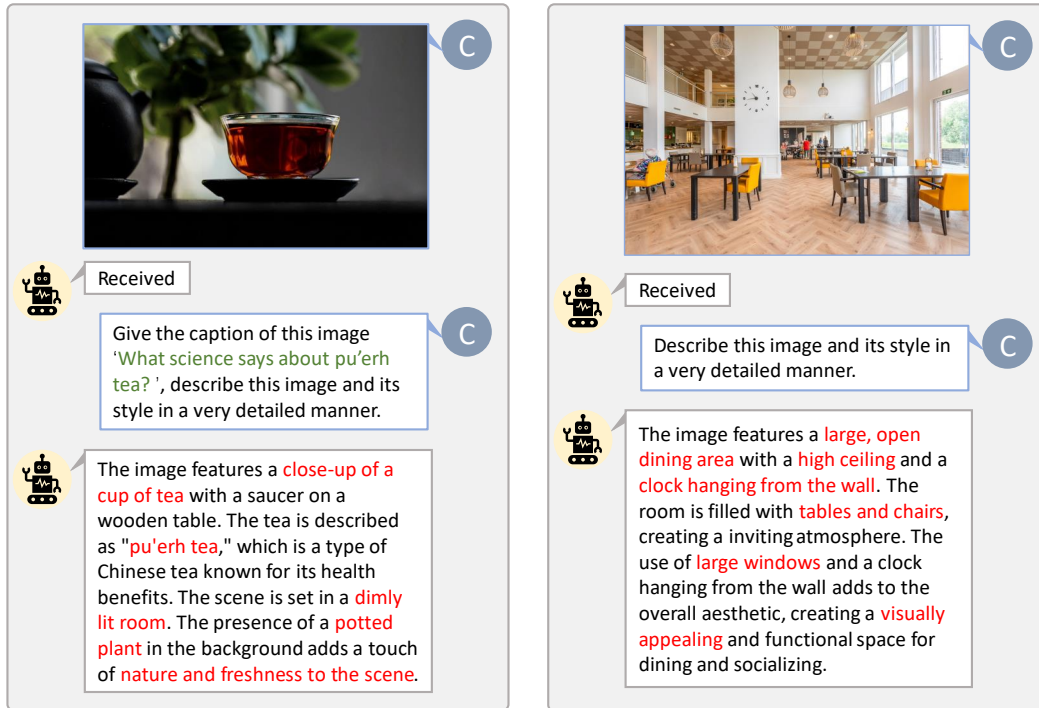


Figure 10: We present auto-labeling with custom prompts for LAION (left) and SAM (right). The words highlighted in green represent the original caption in LAION, while those marked in red indicate the detailed captions labeled by LLaVA.


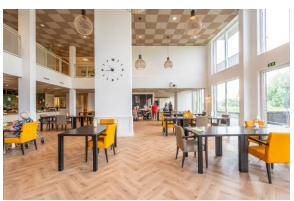

Samples			
SAM + LLaVA	<p>The image features a large statue of a dragon, which is a mythical creature with a long body, wings, and a tail. The dragon statue is situated in a park, surrounded by a lush green field and a flower garden. The dragon statue is positioned in front of a temple, which adds to the overall aesthetic and cultural significance of the scene.</p>	<p>The image features a large, open dining area with a high ceiling and a clock hanging from the wall. The room is filled with tables and chairs, creating an inviting atmosphere. The use of large windows and a clock hanging from the wall adds to the overall aesthetic, creating a visually appealing and functional space for dining and socializing.</p>	<p>The image features a man wearing a blue uniform, likely a police officer, standing on a city street. He is walking down the sidewalk, surrounded by various shops and people. The scene is set in a busy urban environment, with a mix of pedestrians, shops</p>

Figure 11: Examples from the SAM dataset using LLaVA-produced labels. The detailed image descriptions in LLaVA captions can aid the model to grasp more concepts per iteration and boost text-image alignment efficiency.

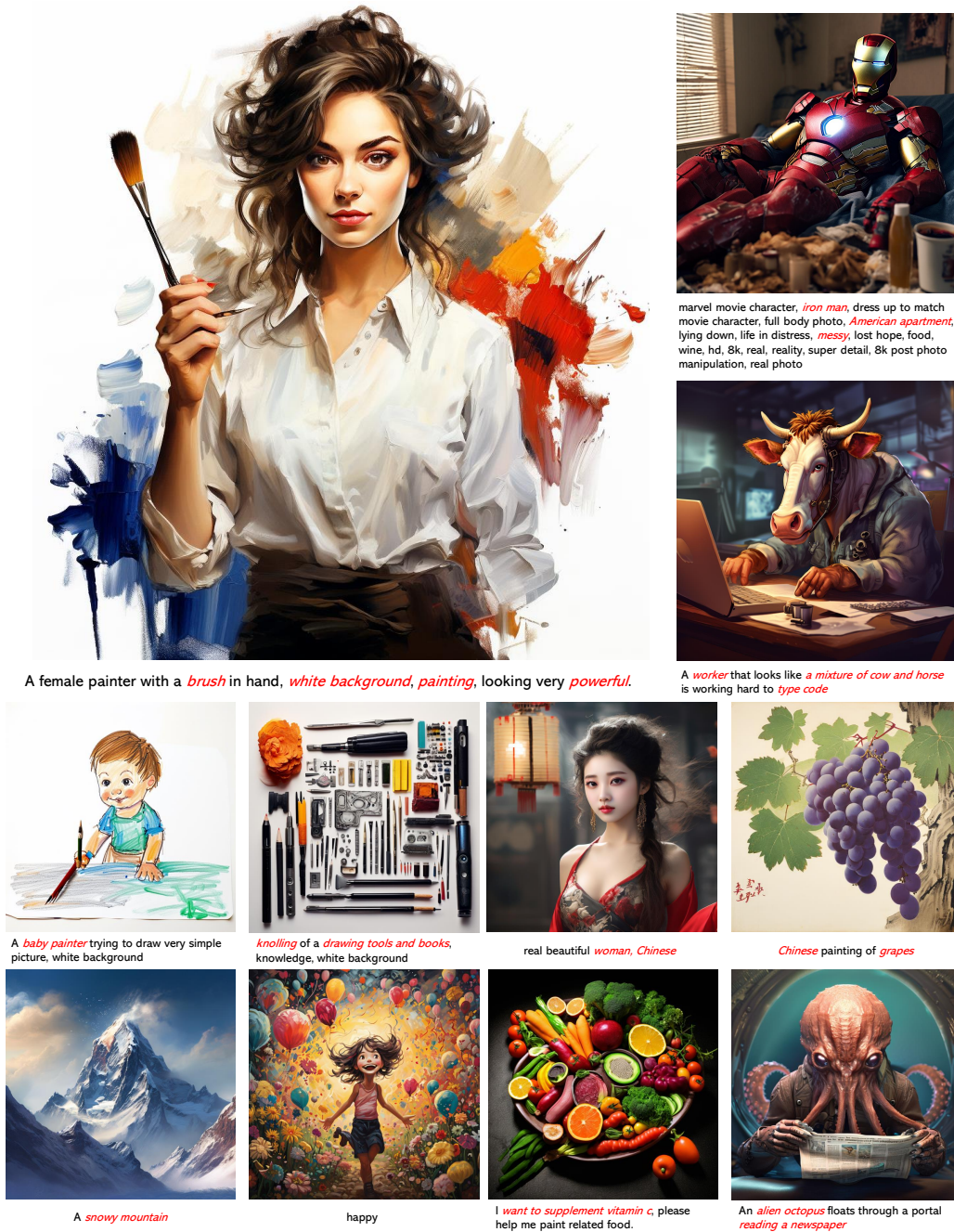


Figure 12: The samples generated by PIXART- α demonstrate outstanding quality, marked by an exceptional level of fidelity and precision in aligning with the given textual descriptions. Better zoom in 200%.



A 4k dslr image of a *lemur* wearing a *red magician hat* and a *blue coat* performing magic tricks with *cards* in a *garden*.



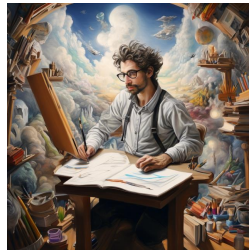
A *silhouette* of a *grand piano* overlooking a *dusky cityscape* viewed from a *top-floor penthouse*, rendered in the *bold and vivid style* of a vintage travel poster.



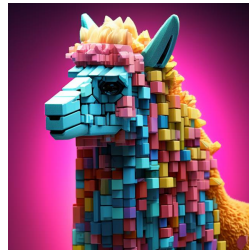
A *vibrant yellow banana-shaped couch* sits in a cozy living room, its *curve cradling* a pile of colorful cushions. on the *wooden floor*, a patterned rug adds a touch of eclectic charm, and a *potted plant* sits in the corner, reaching towards the *sunlight* filtering through the window.



nature vs human nature, surreal, UHD, 8k, hyper details, rich colors, photograph



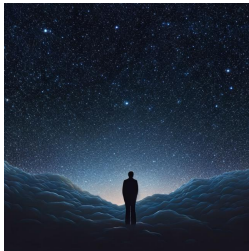
A painter *study hard* to learn how to draw with *many concepts in the air*



An alpaca made of *colorful building blocks*, cyberpunk



stars, water, brilliantly, gorgeous large scale scene, a little *girl*, in the style of *dreamy realism*



A *man* looks up at the *starry sky*, *lonely*



A *fish-eye lens view* of a *turtle* sitting in a forest.



A *dog* is reading a *thick book*



A *jellyfish* riding a *rocket*

Figure 13: The samples generated by PIXART- α demonstrate outstanding quality, marked by an exceptional level of fidelity and precision in aligning with the given textual descriptions. Better zoom in 200%.



Luffy from ONEPIECE, handsome face, fantasy.



An astronaut riding a horse.



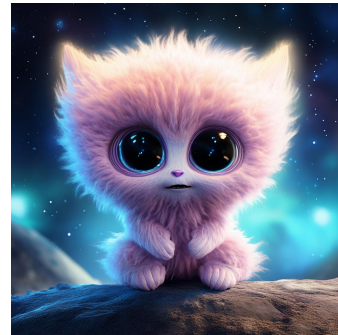
Crocodile in a sweater.



Design a letter A, 3D stereoscopic Ice material Interior light blue Conceptual product design Futuristic Blind box toy Handcrafted Exquisite 3D effect Full body display Ultra-high precision.



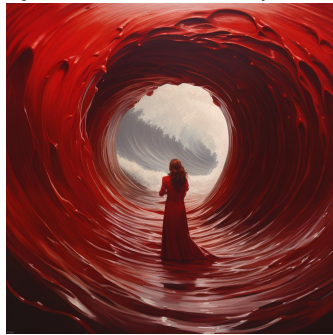
The girl in the car is filled with goldfish and flowers, goldfish can fly, natural posture, youthful energy and pressure, body stretching, goldfish simulation movies in the sky.



A cute fluffy sentient alien from planet Axor, in the andromeda galaxy, the alien have large innocent eyes and is digitgrade, high detail.



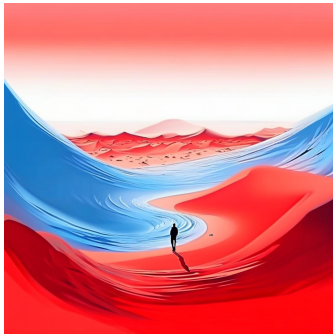
An ancient stone Colossus with eye, Stephan Martinière, dark yellow and light emerald, color zone painting, Denis Sarazhin, dark emerald and silver, robotic expressionism, high detail.



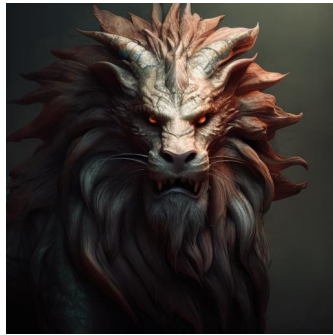
A painting depicting a red wave outside, trapped emotions depicted, full body, Jon Foster, depth, Dima Dmitriev, fisheye effects, Ray Collins.



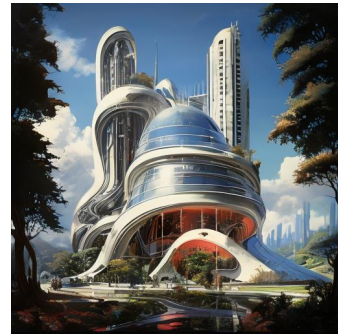
Bright scene, aerial view, ancient city, fantasy, gorgeous light, mirror reflection, high detail, wide angle lens.



A person standing on the desert, desert waves, half red, half blue, sand, illustration, outdoor.



A lion with a dragon's head.



Futurist painting of the building.

Figure 14: The samples generated by PIXART- α demonstrate outstanding quality, marked by an exceptional level of fidelity and precision in aligning with the given textual descriptions. Better zoom in 200%.

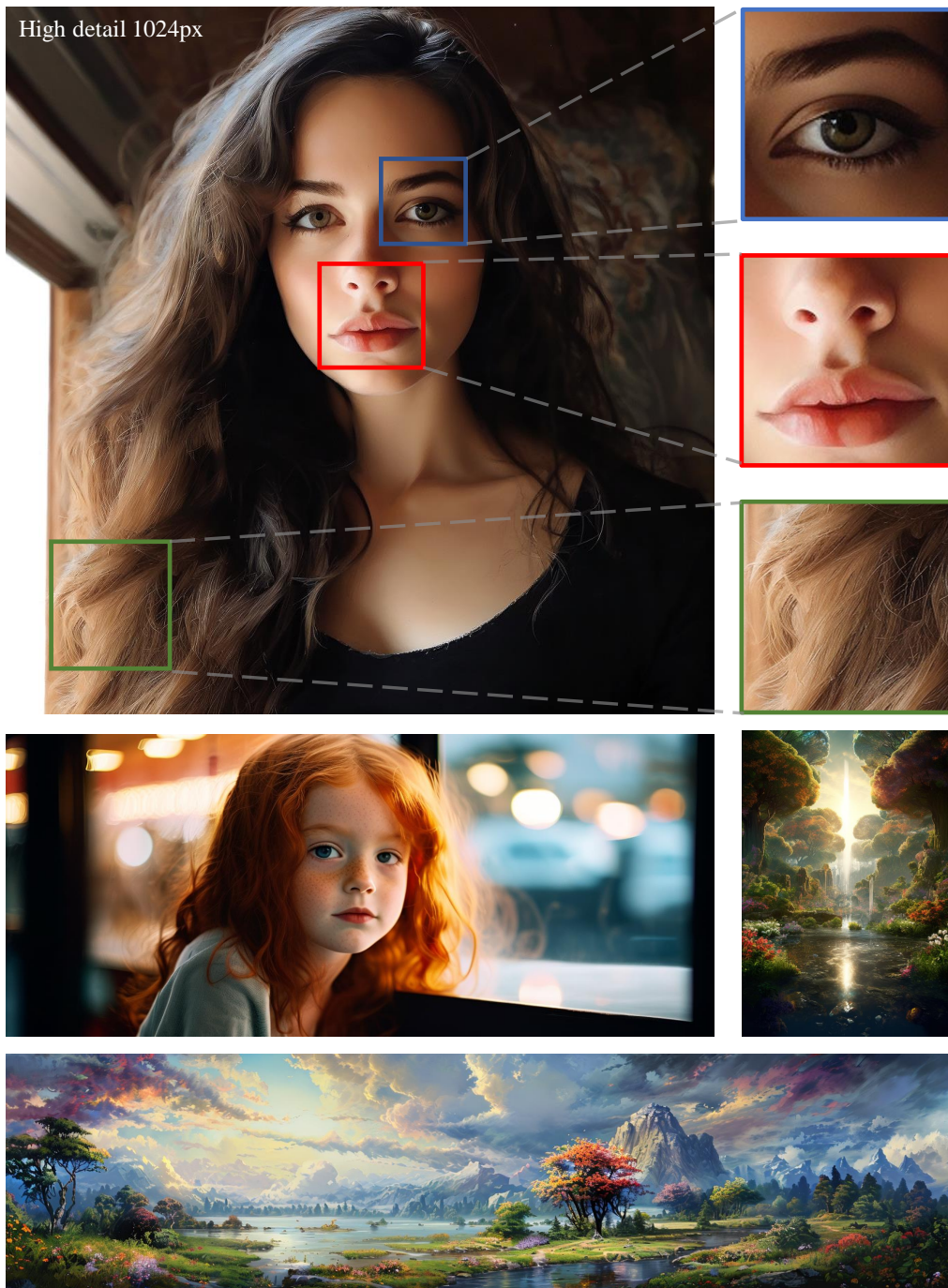


Figure 15: PIXART- α is capable of generating images with resolutions of up to 1024×1024 while preserving rich, complex details. Additionally, it can generate images with arbitrary aspect ratios, providing flexibility in image generation.

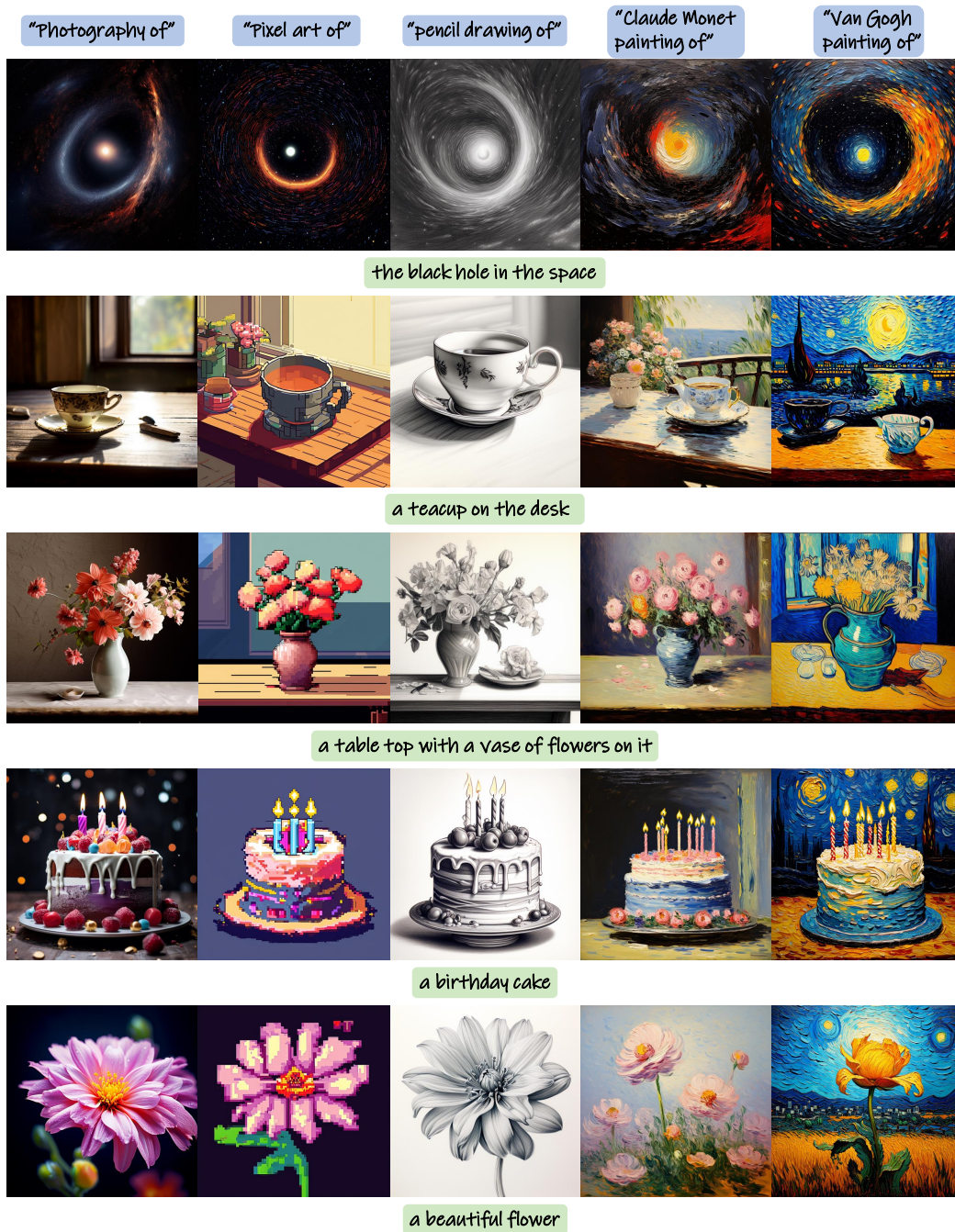
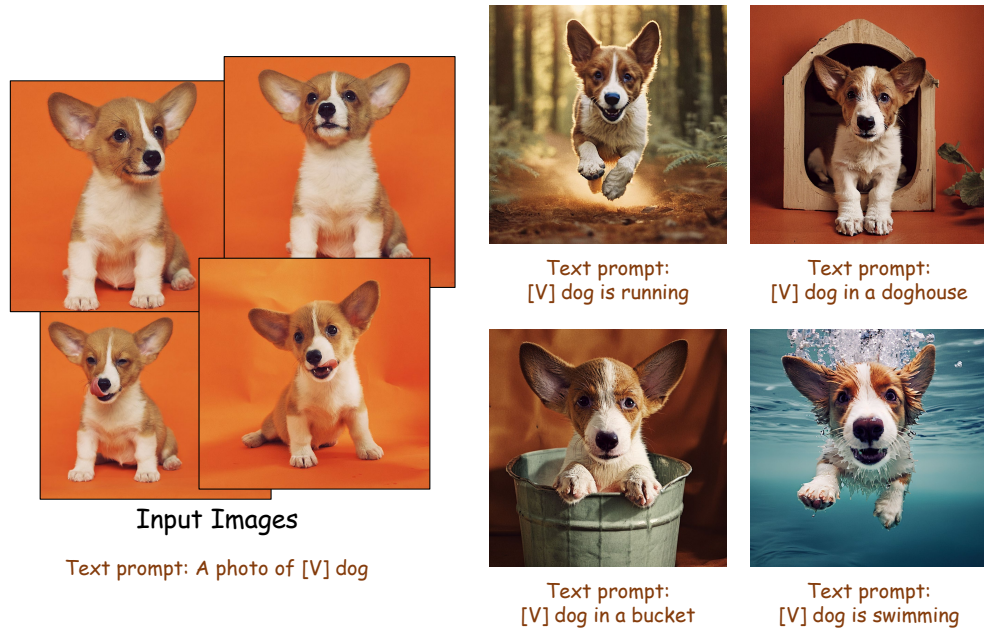


Figure 16: **Prompt mixing:** PIXART- α can directly manipulate the image style with text prompts. In this figure, we generate five outputs using the `styles` to control `the objects`. For instance, the second picture of the first sample, located at the left corner of the figure, uses the prompt “Pixel Art of `the black hole in the space`”. Better zoom in 200%.



(a) Dreambooth + PIXART- α is capable of customized image generation aligned with text prompts.



(b) Dreambooth + PIXART- α is capable of color modification of a specific object such as Wenjie M5.

Figure 17: PIXART- α can be combined with Dreambooth. Given a few images and text prompts, PIXART- α can generate high-fidelity images, that exhibit natural interactions with the environment 17a, precise modification of the object colors 17b, demonstrating that PIXART- α can generate images with exceptional quality, and has a strong capability in customized extension.

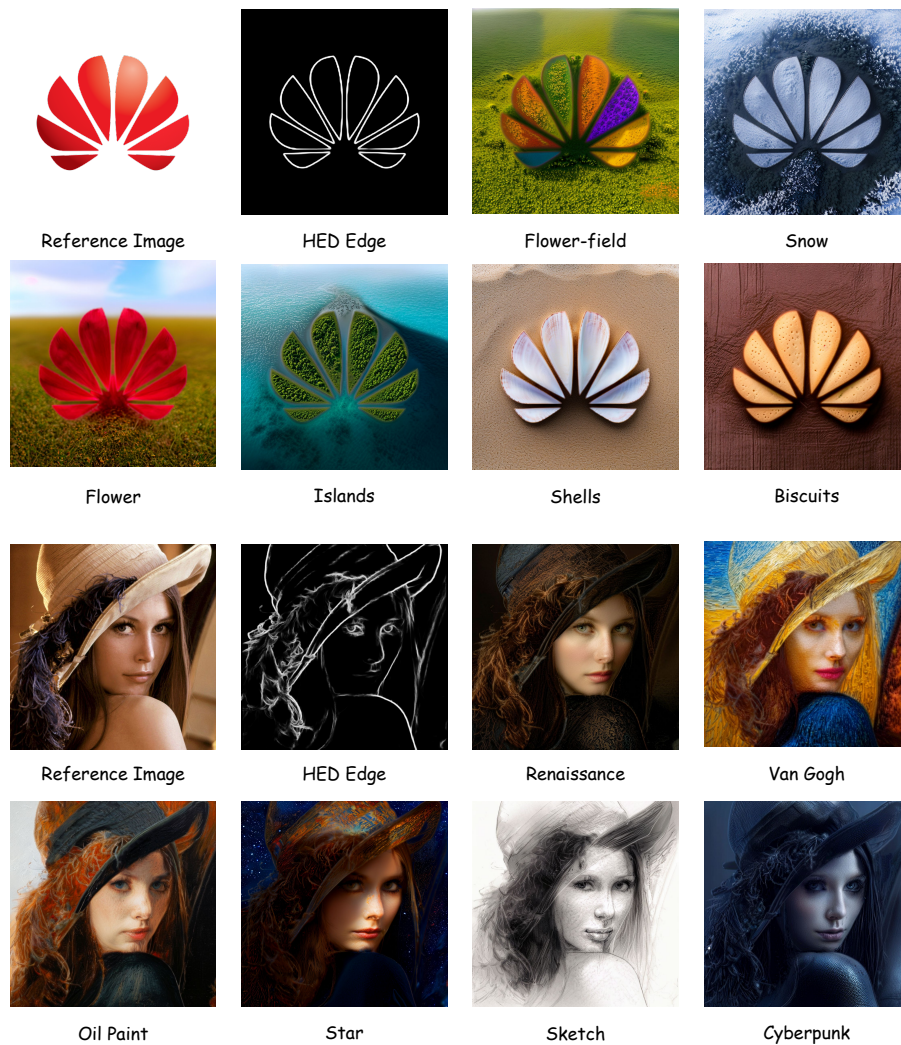


Figure 18: ControlNet customization samples from PIXART- α . We use the reference images to generate the corresponding HED edge images and use them as the control signal for PIXART- α ControlNet. Better zoom in 200%.

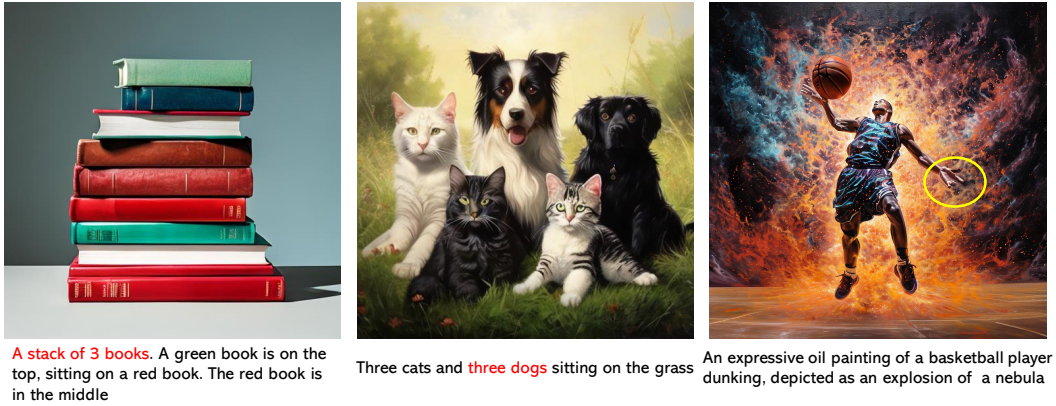


Figure 19: Instances where PIXART- α encounters challenges include situations that necessitate precise counting or accurate representation of human limbs. In these cases, the model may face difficulties in providing accurate results.

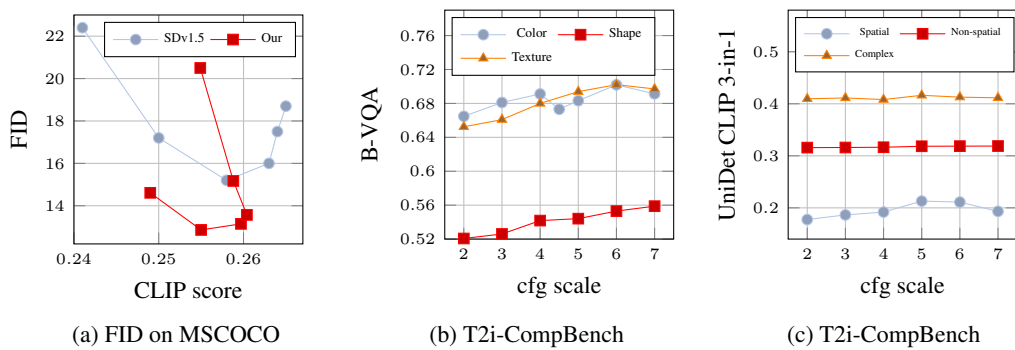


Figure 20: (a) Plotting FID vs. CLIP score for different cfg scales sampled from [1.5, 2.0, 3.0, 4.0, 5.0, 6.0]. PIXART- α shows slight better performance than SDv1.5 on MSCOCO. (b) and (c) demonstrate the ability of PIXART- α to maintain robustness across various cfg scales on the T2I-CompBench.

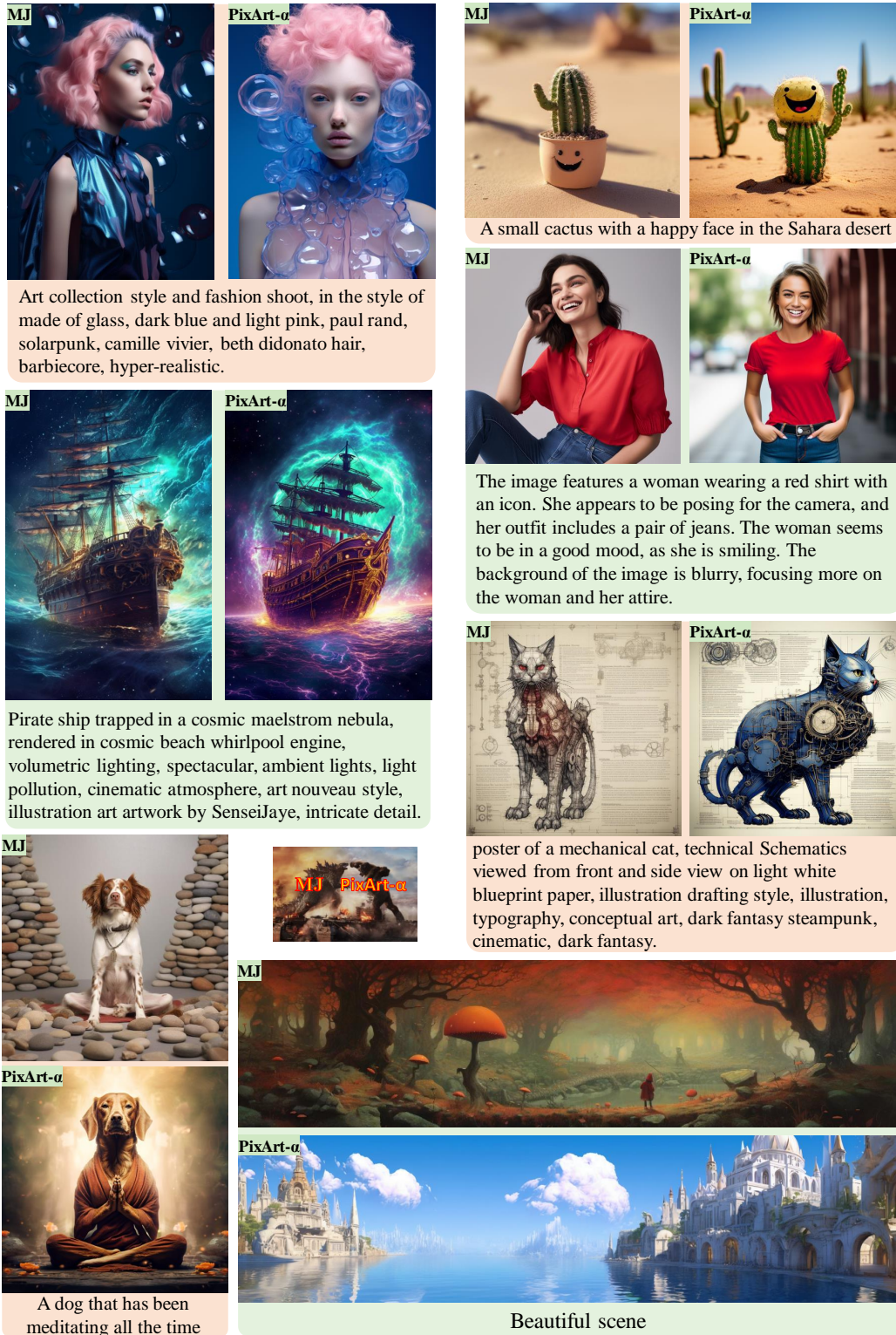


Figure 21: This figure presents the **answers** to the image generation quality assessment as depicted in Appendix A.2. The method utilized for each pair of images is annotated at the top-left corner.