

ONLINE CONTINUAL LEARNING FOR PROGRESSIVE DISTRIBUTION SHIFT (OCL-PDS): A PRACTITIONER’S PERSPECTIVE

Runtian Zhai^{1*}, Stefan Schroedl², Aram Galstyan², Anoop Kumar²,
Greg Ver Steeg², Pradeep Natarajan²

¹Carnegie Mellon University ²Amazon Alexa AI *Work done during internship at Amazon
rzhai@cmu.edu, {schroedl, argalsty, anooamzn, gssteeg, natarap}@amazon.com

ABSTRACT

We introduce the novel OCL-PDS problem - Online Continual Learning for Progressive Distribution Shift. PDS refers to the subtle, gradual, and continuous distribution shift that widely exists in modern deep learning applications. It is widely observed in industry that PDS can cause significant performance drop. While previous work in continual learning and domain adaptation addresses this problem to some extent, our investigations from the practitioner’s perspective reveal flawed assumptions that limit their applicability on daily challenges faced in real-world scenarios, and this work aims to close the gap between academic research and industry. For this new problem, we build 4 new benchmarks from the Wilds dataset (Koh et al., 2021), and implement 12 algorithms and baselines including both supervised and semi-supervised methods, which we test extensively on the new benchmarks. We hope that this work can provide practitioners with tools to better handle realistic PDS, and help scientists design better OCL algorithms.

1 INTRODUCTION

In most modern deep learning applications, the input data undergoes a continual distribution shift over time. For instance, Figure 1a demonstrates a satellite image classification task and a toxic language detection task with such temporal distribution shift. Such distribution shift can cause significant performance drop in deep models, a widely observed phenomenon known as *model drift*. A critical problem for practitioners, therefore, is how to deal with what we term *progressive distribution shift (PDS)*, defined as **the subtle, gradual, and continuous distribution shift that widely exists in modern deep learning applications**. In this work, we explore handling PDS with *online continual learning (OCL)*, where **the learner collects, learns, and is evaluated on online samples from a continually changing data distribution**.

In this work, we introduce the novel OCL-PDS problem formulated in Section 2. The OCL-PDS problem is closely related to two research areas: *domain adaptation (DA)* and *continual learning (CL)*, in which there is a rich body of academic work. However, through a literature review and our conversations with practitioners, we find that there still remains a gap between the settings widely used in academic work and in real industrial applications. To close this gap, we commit ourselves to **thinking from a practitioner’s perspective**, which is the core spirit of this work. Our primary goal is to build tools for investigating the real issues practitioners are facing in their day-to-day work. To achieve this goal, we challenge the prevailing assumptions in previous work, and propose three important modifications to the conventional DA and CL problem settings:

1. **Task-free:** One point conventional DA and CL settings have in common is assuming clear boundaries between distinct domains (or tasks), but practitioners rarely apply the same model to very different domains in industry. In contrast, OCL studies the *task-free CL* setting (Aljundi et al., 2019b) where there is no clear boundary, and the distribution shift is continuous. Moreover, in OCL both training and evaluation are online, unlike previous task-free CL settings with offline evaluation, which is not as realistic in a “lifelong” setting.
2. **Forgetting is allowed:** Avoiding *catastrophic forgetting* is a huge topic in CL, which usually requires no forgetting on *all* tasks. However, remembering *everything* is actually impractical, infeasible and potentially harmful, so OCL-PDS only requires remembering recent knowledge and important knowledge which is described by a *regression set* (Sec. 2.2).

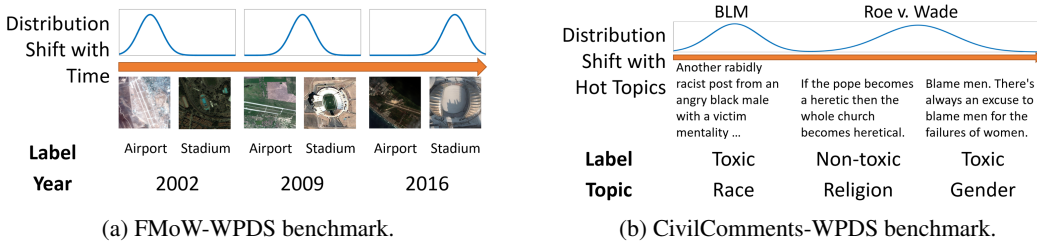


Figure 1: FMOw-WPDS and CivilComments-WPDS benchmarks which we build in this work.

3. **Infinite storage:** Previous work in CL usually assumes a limited storage (buffer) size. However, storage is not the most pressing bottleneck in most industrial applications. Thus, in OCL-PDS, we assume an infinitely large storage where all historical samples can be stored. However, the learner cannot replay all samples because it would be too inefficient.

In Appendix A.5 we will compare OCL-PDS to previous settings in detail. Then, in Section 3, we will build 4 new benchmarks for OCL-PDS including both vision and language tasks, and we make every effort to make sure that they can reflect real PDS scenarios that practitioners need to deal with. Then, we will explore OCL algorithms in Section 4, and implement 12 supervised/semi-supervised OCL algorithms¹ and baselines adapted to OCL-PDS, which we test extensively on our benchmarks in Section 5. Our key experimental observations include: (i) A task-dependent relationship between learning and remembering; (ii) Some existing methods have low performances on regression tasks; (iii) SSL helps improve online performance but requires a critical virtual update step.

Contributions. Our contributions in this work include: (i) Introducing the novel OCL-PDS problem which more closely aligns with practitioners’ needs; (ii) Releasing 4 new benchmarks for this novel setting; (iii) Adapting and implementing 12 OCL algorithms and baselines, including both supervised and semi-supervised, for OCL-PDS; (iv) Comparing these algorithms and baselines with extensive experiments, which leads to a number of key observations. We hope that this work can inspire more practitioners and researchers to investigate and dive deep into real-world PDS.

2 THE OCL-PDS PROBLEM

2.1 PROBLEM FORMULATION

We have a stream of online data S_0, S_1, \dots , where each S_t is a batch of *i.i.d.* samples from distribution D_t that changes with time t continuously, for which we assume that $\text{Div}(D_t \parallel D_{t+1}) < \rho$ for all t for some **divergence function** Div . Online Continual Learning (OCL) goes as follows:

- At $t = 0$, receive a *labeled* training set S_0 , on which train the initial model f_0
- For $t = 1, 2, \dots, T, \dots$ do
 1. Data collection: Receive a new *unlabeled data batch* $S_t = \{(x_t^{(i)}, y_t^{(i)})\}_{i=1}^{n_t} \stackrel{\text{i.i.d.}}{\sim} D_t$.
 2. Evaluation: Predict on S_t with the current model f_{t-1} , and get some **feedback**
 3. Fine-tuning: Update the model $f_{t-1} \rightarrow f_t$ with **all previous information**

Evaluation metrics. An OCL algorithm is used for fine-tuning and is evaluated by three metrics:

1. **Online performance:** Denote the performance of f_s on S_t by A_s^t . The online performance at time t (as computed in Step 2 - Evaluation) is A_{t-1}^t , and the *average online performance* before horizon T is defined as $(A_0^1 + \dots + A_{T-1}^T)/T$.
2. **Knowledge retention:** In OCL-PDS the model only needs to remember two types of knowledge: **recent knowledge** and important knowledge. For a certain *recent time window* w , the *recent performance* is defined as $(A_{t-1}^{t-w} + \dots + A_{t-1}^{t-1})/w$. The important data is described by a **regression set**, and the *regression set performance* is the model’s performance on this set.
3. **Training efficiency:** This is measured by the *average runtime* of the fine-tuning step, which is very important for this online setting where the OCL algorithm is run for many times.

2.2 DETAILS

Divergence function. For distributions P and Q , $\text{Div}(P \parallel Q)$ is the divergence *from* P to Q , and can be different from $\text{Div}(Q \parallel P)$. According to our reasoning in Appendix B, an ideal divergence function for OCL-PDS should be *asymmetric and bounded*, so we cannot use popular functions such as total variation, Wasserstein distance, MMD, KL-divergence and JS-divergence. In this work, we use the ϵ -KL-divergence (Eqn. (1)), whose definition and properties can be found in Appendix B.

¹We call an OCL algorithm *supervised* if it doesn’t use unlabeled data, and *semi-supervised* if it does.

Table 1: Benchmarks we build. $T + 1$ = total number of batches. w = recent time window.

Benchmark	Description	Regression Set	$T + 1$	w
CivilComments-WPDS	Toxic language detection on social media	Critical data	16	5
FMoW-WPDS	Satellite image classification for facilities	Frequent data	25	6
Amazon-WPDS	Review sentiment analysis on Amazon.com	Frequent data	18	6
Poverty-WPDS	Satellite image regression for wealth index	Critical data	14	5

Data batch. If $|S_t| = 1$, then this is the conventional online learning setting where samples arrive one by one. However, industry practitioners seldom update the model over a single sample, and always collect a batch of samples before fine-tuning the model, so we consider data batches instead.

Feedback. Without any feedback, the problem is unsupervised because we only have the unlabeled batches to fine-tune the model, which is too hard and unrealistic. Indeed, for most deployed industrial systems, there are tools for evaluating online performance, either through some automated metrics or feedback provided by end-users. We use the *Random Label Feedback (RLF)* model, where the labels of α fraction of the samples in S_t are provided as feedback. $\alpha = 0$, $\alpha = 1$ and $\alpha \in (0, 1)$ correspond to the unsupervised, supervised and semi-supervised learning settings, respectively.

All previous information. We allow the learner to store all previously seen samples and feedback (though the learner cannot really replay all samples as it would be too inefficient), which is starkly different from most previous papers in CL that assume a limited storage size.

Recent knowledge. OCL requires no forgetting on recent knowledge, because (i) in general, practitioners expect the model not to forget too quickly, and (ii) in many applications the same distribution repeats periodically, which makes recent knowledge useful. For example, satellite images in summer and winter look very different (*e.g.* due to snow), but the images in two consecutive summers look similar, so in this case it is useful to remember the knowledge for at least one year.

Regression set. In the software industry, *regression* refers to the deterioration of performance after an update (Yan et al., 2021). The *regression set* is defined as the set of data for which regression is not allowed. In some applications, the regression set contains *frequent data* that appears more often than other data; in others, it contains *critical data* on which making a mistake is more costly.

3 BENCHMARKS

We investigate the previous continual learning benchmarks and find that most of them are one of the following: (i) Multiple datasets, one for each task; (ii) Perturbed image classification, *e.g.* permuting the pixels with different random seeds; (iii) Split-class classification, *e.g.* split the 100 classes in CIFAR-100 (Krizhevsky et al., 2009) into 20 groups with 5 classes per group, and make each group a 5-way classification task. None of them is realistic enough to represent the real PDS that practitioners need to deal with, so we build four new benchmarks for OCL-PDS.² We build the benchmarks with the 3-step procedure detailed in Appendix C.1. See Table 1 for a summary. Here we briefly describe the our four benchmarks, and details can be found in Appendix C.

CivilComments-WPDS. This benchmark is based on the CivilComments-Wilds dataset (Borkan et al., 2019), which is a toxic language detection task on social media (Figure 1b). WPDS stands for Wilds-PDS. This benchmark models the shift in hot topics. The regression set contains critical data - Comments with severe harassment, including identity attack and explicit sexual comments.

FMoW-WPDS. This benchmark is based on the FMoW-Wilds dataset (Christie et al., 2018), which is a satellite image facility classification task (Figure 1a). It models the shift in time. The regression set contains frequent data - Data from two highly populated regions: Americas and Asia.

Amazon-WPDS. This benchmark is based on the Amazon-Wilds dataset (Ni et al., 2019), which is a review sentiment analysis task on shopping websites. This benchmark models the shift in language use. The regression set contains frequent data - Data from 10 popular product categories.

Poverty-WPDS. This benchmark is based on the PovertyMap-Wilds dataset (Yeh et al., 2020), which is a satellite image wealth index *regression task*. This benchmark models the shift in time. The regression set contains critical data - Images from urban areas. Following Koh et al. (2021), performances here are measured by the Pearson correlation between outputs and ground truths.

²One similar benchmark is CLEAR (Lin et al., 2021) that contains images from different years. However, CLEAR only has vision tasks and does not have regression sets, while our benchmarks are more comprehensive.

4 OCL ALGORITHMS

Naïve baselines. There are 3 baselines for measuring the difficulty of an OCL-PDS task and interpreting the performances of OCL algorithms: (i) **First Batch Only (FBO)**, which uses the initial model trained on the first batch S_0 (including the training regression set) with ERM till the end, serving as a lower bound of online performance, and an upper bound of regression set performance because there is no forgetting; (ii) **i.i.d. offline**, which trains a new model on the new data before evaluation, serving as an upper bound of the online performance that reflects the generalization gap; (iii) **New Batch Only (NBO)**, which fine-tunes the model on the new data alone and never care about forgetting, which serves as a lower bound of the knowledge retention performance.

Supervised OCL algorithms. We implement two types of supervised algorithms: *rehearsal based methods* and *regularization based methods*. In rehearsal based methods Ratcliff (1990); Robins (1995), historical data is stored in a memory buffer and replayed to the learner, such as **ER-FIFO** (experience replay with a first-in-first-out buffer) which fine-tunes the model on three sets of data: new data, recent data and regression data, and the new batch replaces the oldest one (while the regression set is never removed). Variants of ER-FIFO include **ER-FIFO-RW** where RW stands for reweighting that balances the three sources of data so that they have the same probability of being sampled in SGD, **Maximally Interfered Retrieval (MIR)** (Aljundi et al., 2019a) where the model is first virtually updated on new data alone and historical samples on which the loss increases the most are being replayed, and **MaxLoss** (Lin et al., 2022) where after virtual update historical samples with the highest losses are being replayed.

Another kind of rehearsal based method is **GEM-PDS** which combines Gradient Episodic Memory (GEM) (Lopez-Paz & Ranzato, 2017) and Average GEM (A-GEM) (Chaudhry et al., 2019). Denote the gradients of the loss on the new, recent and regression data by g_0 , g_1 and g_2 , respectively. Gradient descent along g_0 might cause the model to forget, so instead we find a “pseudo gradient” g by solving the following convex optimization problem: $\min_g \|g - g_0\|_2^2$ subject to $\langle g, g_1 \rangle \geq 0$, $\langle g, g_2 \rangle \geq 0$. The constraints make sure that the loss on recent and regression data won’t increase. The optimal g^* can be found with a simple procedure described in Appendix D Eqn. (2).

Regularization based methods keep the model weights close to the initial weight so as to reduce forgetting. For instance, **Online L2 Regularization (L2Reg)** adds a L_2 norm penalty term to the objective to pull the model weight back to the initial weight, and a variant called **Elastic Weight Consolidation (EWC)** (Kirkpatrick et al., 2017) adds the Fisher information matrix (FIM) to the penalty term so that weights that are more influential change less.

Semi-supervised OCL algorithms. **Pseudo labeling (PL)** was proposed in Lee (2013) and is also known as *self-training*. Note that if f_t does well on D_t , then it is likely to be able to do well on D_{t+1} due to the continuity of PDS. Thus, for an unlabeled sample x in S_t , define its pseudo label simply as $f_{t-1}(x)$. **FixMatch (FM)** (Sohn et al., 2020) is a variant of PL which requires two types of data augmentation: a strong one and a weak one. Pseudo labels are generated on the weakly augmented samples while the model is fine-tuned on the strongly augmented samples, which leads to a *consistency regularization* effect that makes the model have consistent outputs between two augmentations. Moreover, in our implementation we include a “virtual update” step: We first virtually update the model on new labeled data alone, use that model to generate the pseudo labels, and then recover the model weight and fine-tune it on labeled and pseudo-labeled samples. We find that this virtual update step is very important in our experiments.

5 EXPERIMENTS

We compare the algorithms on the 4 benchmarks we constructed for OCL-PDS. Each experiment is run 5 times with different random seeds. For the recent performance and the regression set performance (reg performance), we report both the average and the worst performances, which are the mean and minimum of the performance over $t = 1, \dots, T$, respectively.³

Observation #1: Strong positive correlation between online and recent performances. In Figures 2a and 2b, we plot the average online and worst recent performances achieved by different supervised OCL algorithms on the CivilComments-WPDS ($\alpha = 0.5\%$) and FMoW-WPDS ($\alpha = 50\%$) benchmarks (α is the fraction of labeled samples), where we can see a strong positive correlation between these two. This is also known as the *accuracy-on-the-line* phenomenon (Miller et al., 2021).

³The reason why we also report the worst performance is that knowledge retention is required for all t .

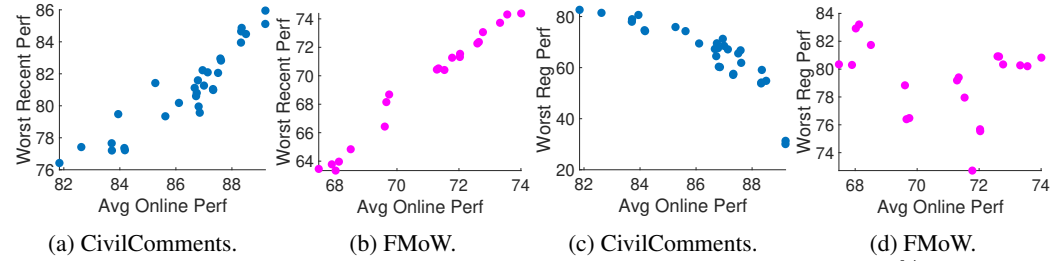


Figure 2: Results of supervised OCL algorithms on CivilComments-WPDS ($\alpha = 0.5\%$) and FMoW-WPDS ($\alpha = 50\%$). Each point corresponds to one pair of algorithm and hyperparameters.

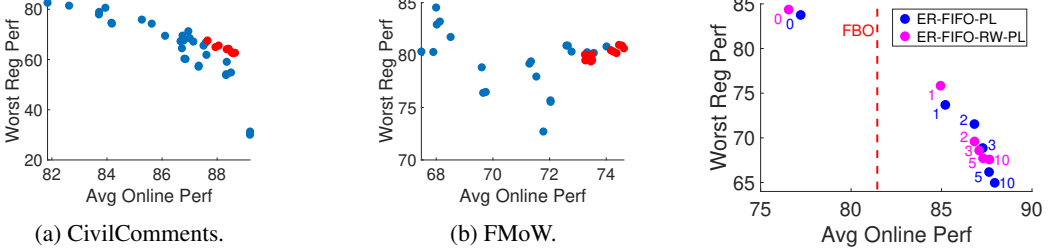


Figure 3: Performances of ER-FIFO-PL/FM and ER-FIFO-RW-PL/FM (in red). FM is only used for FMoW.

Figure 4: PL with different epochs of virtual update (CivilComments).

Observation #2: Correlation between online and reg performances differs among benchmarks. In Figure 2c and 2d, we plot the average online and worst reg performances on the two datasets, and we can see a big difference. For CivilComments-WPDS, the regression set samples (severely offensive comments) are very different from most samples (normal comments), so there is an obvious trade-off between online and reg performances, while there is no such trade-off on FMoW-WPDS.

Observation #3: Some existing methods do not work well on regression tasks. We plot on the right the average online and worst reg performances of different supervised OCL algorithms on Poverty-WPDS ($\alpha = 50\%$), which is a regression task. We observe that while some methods like ER-FIFO and L2Reg do better than the FBO baseline, some others including MIR and EWC achieve lower online performance than FBO which should be a lower bound. Most existing methods have only been tested on classification tasks before, and this experiment shows that they might not work so well on regression tasks.

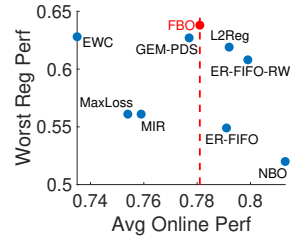


Figure 5: Poverty-WPDS.

Observation #4: Unlabeled data improves OCL performance. In Figure 3, we plot the performances of ER-FIFO-PL/FM and ER-FIFO-RW-PL/FM (in red) along with the performances of all supervised OCL algorithms (in blue) on CivilComments-WPDS and FMoW-WPDS. We can see that with the same worst reg performance, SSL methods achieve higher average online performances, and vice versa. We also observe that FixMatch is slightly better than PL.

Observation #5: Virtual update in PL is important. In Figure 4 we plot the performances of ER-FIFO-PL and ER-FIFO-RW-PL on CivilComments-WPDS with different epochs of virtual update as labeled near the points. We can see that without virtual update (0 epoch), the online performance of PL is even lower than the FBO baseline. However, with just 1 epoch of virtual update, the online performance rises above FBO, and with more epochs of virtual update the online performance is higher (but with a lower reg performance). One explanation is that the virtual update step distills the knowledge of $P(Y | X)$ from the new distribution into the current model, so $P(f_{t-1}^*(X) | X)$ is closer to $P(Y | X, D_t)$. Without virtual update, f_{t-1} only has knowledge from old distributions, so when the model is trained on the pseudo-labeled samples, it reinforces its old knowledge but learns little new knowledge, resulting in a low online performance but high reg performance.

Conclusion. In this work, we introduced the novel OCL-PDS problem which aims to close the gap between academic research and industry in continual learning. We built four new PDS benchmarks, and implemented 12 OCL algorithms and baselines which we compared on the benchmarks. One limitation is that the assumption $\text{Div}(D_t || D_{t+1}) < \rho$ might not be true for all t , and *abrupt shift* could happen in real applications. To detect such abrupt shift, we can use *online metrics* that keep track of the model’s online performance, or we can use methods in *OOD detection* (Hendrycks & Gimpel, 2017; Lee et al., 2018) and *OOD performance prediction* (Chen et al., 2021; Jiang et al., 2022; Garg et al., 2022; Baek et al., 2022). Finally, there is still a gap between the benchmarks we built in this work and real applications, and we hope that in the future there could be more datasets containing real PDS in industry applications released for the better development of this field.

REFERENCES

- Rahaf Aljundi, Eugene Belilovsky, Tinne Tuytelaars, Laurent Charlin, Massimo Caccia, Min Lin, and Lucas Page-Caccia. Online continual learning with maximal interfered retrieval. In H. Wallach, H. Larochelle, A. Beygelzimer, F. d'Alché-Buc, E. Fox, and R. Garnett (eds.), *Advances in Neural Information Processing Systems 32*, pp. 11849–11860. Curran Associates, Inc., 2019a. URL <http://papers.nips.cc/paper/9357-online-continual-learning-with-maximal-interfered-retrieval.pdf>.
- Rahaf Aljundi, Klaas Kelchtermans, and Tinne Tuytelaars. Task-free continual learning. In *Proceedings of the IEEE/CVF Conference on Computer Vision and Pattern Recognition*, pp. 11254–11263, 2019b.
- Rahaf Aljundi, Min Lin, Baptiste Goujaud, and Yoshua Bengio. Gradient based sample selection for online continual learning. *Advances in neural information processing systems*, 32, 2019c.
- Martin Arjovsky, Léon Bottou, Ishaan Gulrajani, and David Lopez-Paz. Invariant risk minimization. *arXiv preprint arXiv:1907.02893*, 2019.
- Philip Bachman, R Devon Hjelm, and William Buchwalter. Learning representations by maximizing mutual information across views. *Advances in neural information processing systems*, 32, 2019.
- Christina Baek, Yiding Jiang, Aditi Raghunathan, and Zico Kolter. Agreement-on-the-line: Predicting the performance of neural networks under distribution shift. *arXiv preprint arXiv:2206.13089*, 2022.
- David Berthelot, Nicholas Carlini, Ian Goodfellow, Nicolas Papernot, Avital Oliver, and Colin A Raffel. Mixmatch: A holistic approach to semi-supervised learning. *Advances in neural information processing systems*, 32, 2019.
- Magdalena Biesialska, Katarzyna Biesialska, and Marta R. Costa-jussà. Continual lifelong learning in natural language processing: A survey. In *Proceedings of the 28th International Conference on Computational Linguistics*, pp. 6523–6541, Barcelona, Spain (Online), December 2020. International Committee on Computational Linguistics. doi: 10.18653/v1/2020.coling-main.574. URL <https://aclanthology.org/2020.coling-main.574>.
- Daniel Borkan, Lucas Dixon, Jeffrey Sorensen, Nithum Thain, and Lucy Vasserman. Nuanced metrics for measuring unintended bias with real data for text classification. In *Companion Proceedings of The 2019 World Wide Web Conference*, 2019.
- Stephen Boyd, Stephen P Boyd, and Lieven Vandenberghe. *Convex optimization*. Cambridge university press, 2004.
- Jonathon Byrd and Zachary Lipton. What is the effect of importance weighting in deep learning? In Kamalika Chaudhuri and Ruslan Salakhutdinov (eds.), *Proceedings of the 36th International Conference on Machine Learning*, volume 97 of *Proceedings of Machine Learning Research*, pp. 872–881. PMLR, 09–15 Jun 2019.
- Zhipeng Cai, Ozan Sener, and Vladlen Koltun. Online continual learning with natural distribution shifts: An empirical study with visual data. In *Proceedings of the IEEE/CVF International Conference on Computer Vision*, pp. 8281–8290, 2021.
- Mathilde Caron, Ishan Misra, Julien Mairal, Priya Goyal, Piotr Bojanowski, and Armand Joulin. Unsupervised learning of visual features by contrasting cluster assignments. *Advances in Neural Information Processing Systems*, 33:9912–9924, 2020.
- Arslan Chaudhry, Marc’Aurelio Ranzato, Marcus Rohrbach, and Mohamed Elhoseiny. Efficient lifelong learning with a-GEM. In *International Conference on Learning Representations*, 2019. URL https://openreview.net/forum?id=Hkf2_sC5FX.
- Jiefeng Chen, Frederick Liu, Besim Avci, Xi Wu, Yingyu Liang, and Somesh Jha. Detecting errors and estimating accuracy on unlabeled data with self-training ensembles. *Advances in Neural Information Processing Systems*, 34:14980–14992, 2021.

- Ting Chen, Simon Kornblith, Mohammad Norouzi, and Geoffrey Hinton. A simple framework for contrastive learning of visual representations. In *International conference on machine learning*, pp. 1597–1607. PMLR, 2020.
- Gordon Christie, Neil Fendley, James Wilson, and Ryan Mukherjee. Functional map of the world. In *Proceedings of the IEEE Conference on Computer Vision and Pattern Recognition*, 2018.
- Aristotelis Chrysakis and Marie-Francine Moens. Online continual learning from imbalanced data. In *International Conference on Machine Learning*, pp. 1952–1961. PMLR, 2020.
- Matthias De Lange and Tinne Tuytelaars. Continual prototype evolution: Learning online from non-stationary data streams. In *Proceedings of the IEEE/CVF International Conference on Computer Vision (ICCV)*, pp. 8250–8259, October 2021.
- Matthias De Lange, Rahaf Aljundi, Marc Masana, Sarah Parisot, Xu Jia, Aleš Leonardis, Gregory Slabaugh, and Tinne Tuytelaars. A continual learning survey: Defying forgetting in classification tasks. *IEEE transactions on pattern analysis and machine intelligence*, 44(7):3366–3385, 2021.
- Cyprien de Masson d’Autume, Sebastian Ruder, Lingpeng Kong, and Dani Yogatama. Episodic memory in lifelong language learning. In H. Wallach, H. Larochelle, A. Beygelzimer, F. d’Alché-Buc, E. Fox, and R. Garnett (eds.), *Advances in Neural Information Processing Systems*, volume 32. Curran Associates, Inc., 2019. URL <https://proceedings.neurips.cc/paper/2019/file/f8d2e80c1458ea2501f98a2cafadb397-Paper.pdf>.
- Jacob Devlin, Ming-Wei Chang, Kenton Lee, and Kristina Toutanova. Bert: Pre-training of deep bidirectional transformers for language understanding. *arXiv preprint arXiv:1810.04805*, 2018.
- Carl Doersch, Abhinav Gupta, and Alexei A. Efros. Unsupervised visual representation learning by context prediction. In *Proceedings of the IEEE International Conference on Computer Vision (ICCV)*, December 2015.
- Yuntao Du, Jindong Wang, Wenjie Feng, Sinno Pan, Tao Qin, Renjun Xu, and Chongjun Wang. Adarnn: Adaptive learning and forecasting of time series. In *Proceedings of the 30th ACM International Conference on Information & Knowledge Management*, pp. 402–411, 2021.
- Wenyang Duan, Xiaoxi He, Lu Zhou, Zimu Zhou, Lothar Thiele, and Hong Rao. Hyper attention recurrent neural network: Tackling temporal covariate shift in time series analysis. *arXiv preprint arXiv:2202.10808*, 2022.
- John Duchi and Hongseok Namkoong. Learning models with uniform performance via distributionally robust optimization. *arXiv preprint arXiv:1810.08750*, 2018.
- Jean-Christophe Gagnon-Audet, Kartik Ahuja, Mohammad Javad Darvishi Bayazi, G. Dumas, and Irina Rish. Woods: Benchmarks for out-of-distribution generalization in time series tasks. *ArXiv*, abs/2203.09978, 2022.
- Yaroslav Ganin, Evgeniya Ustinova, Hana Ajakan, Pascal Germain, Hugo Larochelle, François Laviolette, Mario March, and Victor Lempitsky. Domain-adversarial training of neural networks. *Journal of Machine Learning Research*, 17(59):1–35, 2016. URL <http://jmlr.org/papers/v17/15-239.html>.
- Saurabh Garg, Sivaraman Balakrishnan, Zachary Chase Lipton, Behnam Neyshabur, and Hanie Sedghi. Leveraging unlabeled data to predict out-of-distribution performance. In *International Conference on Learning Representations*, 2022. URL https://openreview.net/forum?id=o_HsiMPYh_x.
- Spyros Gidaris, Praveer Singh, and Nikos Komodakis. Unsupervised representation learning by predicting image rotations. In *International Conference on Learning Representations*, 2018. URL <https://openreview.net/forum?id=S1v4N210->.
- Arthur Gretton, Dougal Sutherland, and Wittawat Jitkrittum. Interpretable comparison of distributions and models. *Advances in Neural Information Processing Systems [Tutorial]*, 2019. URL <https://slideslive.com/38923184/interpretable-comparison-of-distributions-and-models>.

- Jean-Bastien Grill, Florian Strub, Florent Alché, Corentin Tallec, Pierre Richemond, Elena Buchatskaya, Carl Doersch, Bernardo Avila Pires, Zhaohan Guo, Mohammad Gheshlaghi Azar, et al. Bootstrap your own latent—a new approach to self-supervised learning. *Advances in neural information processing systems*, 33:21271–21284, 2020.
- Ishaan Gulrajani and David Lopez-Paz. In search of lost domain generalization. In *International Conference on Learning Representations*, 2021. URL <https://openreview.net/forum?id=lQdXeXD0wtI>.
- Tatsunori Hashimoto, Megha Srivastava, Hongseok Namkoong, and Percy Liang. Fairness without demographics in repeated loss minimization. In Jennifer Dy and Andreas Krause (eds.), *International Conference on Machine Learning*, volume 80 of *Proceedings of Machine Learning Research*, pp. 1929–1938, Stockholmsmässan, Stockholm Sweden, 10–15 Jul 2018. PMLR.
- Kaiming He, Haoqi Fan, Yuxin Wu, Saining Xie, and Ross Girshick. Momentum contrast for unsupervised visual representation learning. In *Proceedings of the IEEE/CVF conference on computer vision and pattern recognition*, pp. 9729–9738, 2020.
- Dan Hendrycks and Kevin Gimpel. A baseline for detecting misclassified and out-of-distribution examples in neural networks. In *International Conference on Learning Representations*, 2017. URL <https://openreview.net/forum?id=Hkg4TI9xl>.
- Weihua Hu, Gang Niu, Issei Sato, and Masashi Sugiyama. Does distributionally robust supervised learning give robust classifiers? In *International Conference on Machine Learning*, pp. 2029–2037. PMLR, 2018.
- Xiaolei Huang and Michael J. Paul. Neural temporality adaptation for document classification: Diachronic word embeddings and domain adaptation models. In *Proceedings of the 57th Annual Meeting of the Association for Computational Linguistics*, pp. 4113–4123, Florence, Italy, July 2019. Association for Computational Linguistics. doi: 10.18653/v1/P19-1403. URL <https://aclanthology.org/P19-1403>.
- David Isele and Akansel Cosgun. Selective experience replay for lifelong learning. In *Proceedings of the AAAI Conference on Artificial Intelligence*, volume 32, 2018.
- Arthur Jacot, Franck Gabriel, and Clement Hongler. Neural tangent kernel: Convergence and generalization in neural networks. In S. Bengio, H. Wallach, H. Larochelle, K. Grauman, N. Cesa-Bianchi, and R. Garnett (eds.), *Advances in Neural Information Processing Systems*, volume 31. Curran Associates, Inc., 2018.
- Kokil Jaidka, Niyati Chhaya, and Lyle Ungar. Diachronic degradation of language models: Insights from social media. In *Proceedings of the 56th Annual Meeting of the Association for Computational Linguistics (Volume 2: Short Papers)*, pp. 195–200, Melbourne, Australia, July 2018. Association for Computational Linguistics. doi: 10.18653/v1/P18-2032. URL <https://aclanthology.org/P18-2032>.
- Yiding Jiang, Vaishnavh Nagarajan, Christina Baek, and J Zico Kolter. Assessing generalization of SGD via disagreement. In *International Conference on Learning Representations*, 2022. URL <https://openreview.net/forum?id=WvOGCEAQhxl>.
- Xisen Jin, Arka Sadhu, Junyi Du, and Xiang Ren. Gradient-based editing of memory examples for online task-free continual learning. *Advances in Neural Information Processing Systems*, 34: 29193–29205, 2021.
- Ronald Kemker and Christopher Kanan. Fearnert: Brain-inspired model for incremental learning. In *International Conference on Learning Representations*, 2018. URL <https://openreview.net/forum?id=SJ1Xmf-Rb>.
- Chris Dongjoo Kim, Jinseo Jeong, and Gunhee Kim. Imbalanced continual learning with partitioning reservoir sampling. *CoRR*, abs/2009.03632, 2020. URL <https://arxiv.org/abs/2009.03632>.

- Taesung Kim, Jinhee Kim, Yunwon Tae, Cheonbok Park, Jang-Ho Choi, and Jaegul Choo. Reversible instance normalization for accurate time-series forecasting against distribution shift. In *International Conference on Learning Representations*, 2022. URL <https://openreview.net/forum?id=cGDAkQo1C0p>.
- James Kirkpatrick, Razvan Pascanu, Neil Rabinowitz, Joel Veness, Guillaume Desjardins, Andrei A Rusu, Kieran Milan, John Quan, Tiago Ramalho, Agnieszka Grabska-Barwinska, et al. Overcoming catastrophic forgetting in neural networks. *Proceedings of the national academy of sciences*, 114(13):3521–3526, 2017.
- Pang Wei Koh, Shiori Sagawa, Henrik Marklund, Sang Michael Xie, Marvin Zhang, Akshay Bal-subramani, Weihua Hu, Michihiro Yasunaga, Richard Lanus Phillips, Irena Gao, et al. Wilds: A benchmark of in-the-wild distribution shifts. In *International Conference on Machine Learning*, pp. 5637–5664. PMLR, 2021.
- Alex Krizhevsky, Geoffrey Hinton, et al. Learning multiple layers of features from tiny images. 2009.
- Ananya Kumar, Tengyu Ma, and Percy Liang. Understanding self-training for gradual domain adaptation. In Hal Daumé III and Aarti Singh (eds.), *Proceedings of the 37th International Conference on Machine Learning*, volume 119 of *Proceedings of Machine Learning Research*, pp. 5468–5479. PMLR, 13–18 Jul 2020. URL <https://proceedings.mlr.press/v119/kumar20c.html>.
- Preethi Lahoti, Alex Beutel, Jilin Chen, Kang Lee, Flavien Prost, Nithum Thain, Xuezhi Wang, and Ed Chi. Fairness without demographics through adversarially reweighted learning. In H. Larochelle, M. Ranzato, R. Hadsell, M. F. Balcan, and H. Lin (eds.), *Advances in Neural Information Processing Systems*, volume 33, pp. 728–740. Curran Associates, Inc., 2020.
- Samuli Laine and Timo Aila. Temporal ensembling for semi-supervised learning. In *International Conference on Learning Representations*, 2017. URL <https://openreview.net/forum?id=BJ6oOfqge>.
- Dong-Hyun Lee. Pseudo-label : The simple and efficient semi-supervised learning method for deep neural networks. 2013.
- Kimin Lee, Honglak Lee, Kibok Lee, and Jinwoo Shin. Training confidence-calibrated classifiers for detecting out-of-distribution samples. In *International Conference on Learning Representations*, 2018. URL <https://openreview.net/forum?id=ryiAv2xAZ>.
- Zhizhong Li and Derek Hoiem. Learning without forgetting. *IEEE transactions on pattern analysis and machine intelligence*, 40(12):2935–2947, 2017.
- Bill Yuchen Lin, Sida Wang, Xi Lin, Robin Jia, Lin Xiao, Xiang Ren, and Scott Yih. On continual model refinement in out-of-distribution data streams. In *Proceedings of the 60th Annual Meeting of the Association for Computational Linguistics (Volume 1: Long Papers)*, pp. 3128–3139, Dublin, Ireland, May 2022. Association for Computational Linguistics. doi: 10.18653/v1/2022.acl-long.223. URL <https://aclanthology.org/2022.acl-long.223>.
- Zhiqiu Lin, Jia Shi, Deepak Pathak, and Deva Ramanan. The clear benchmark: Continual learning on real-world imagery. In *Thirty-fifth Conference on Neural Information Processing Systems Datasets and Benchmarks Track*, 2021.
- Anjin Liu, Guangquan Zhang, and Jie Lu. Fuzzy time windowing for gradual concept drift adaptation. In *2017 IEEE International Conference on Fuzzy Systems (FUZZ-IEEE)*, pp. 1–6. IEEE, 2017.
- Bing Liu. Learning on the job: Online lifelong and continual learning. *Proceedings of the AAAI Conference on Artificial Intelligence*, 34(09):13544–13549, Apr. 2020. doi: 10.1609/aaai.v34i09.7079. URL <https://ojs.aaai.org/index.php/AAAI/article/view/7079>.

- Vincenzo Lomonaco, Lorenzo Pellegrini, Andrea Cossu, Antonio Carta, Gabriele Graffieti, Tyler L. Hayes, Matthias De Lange, Marc Masana, Jary Pomponi, Guido van de Ven, Martin Mundt, Qi She, Keiland Cooper, Jeremy Forest, Eden Belouadah, Simone Calderara, German I. Parisi, Fabio Cuzzolin, Andreas Tolia, Simone Scardapane, Luca Antiga, Subutai Amhad, Adrian Popescu, Christopher Kanan, Joost van de Weijer, Tinne Tuytelaars, Davide Bacciu, and Davide Maltoni. Avalanche: an end-to-end library for continual learning. In *Proceedings of IEEE Conference on Computer Vision and Pattern Recognition*, 2nd Continual Learning in Computer Vision Workshop, 2021.
- Mingsheng Long, Han Zhu, Jianmin Wang, and Michael I Jordan. Unsupervised domain adaptation with residual transfer networks. *Advances in neural information processing systems*, 29, 2016.
- David Lopez-Paz and Marc’Aurelio Ranzato. Gradient episodic memory for continual learning. *Advances in neural information processing systems*, 30, 2017.
- Jie Lu, Anjin Liu, Fan Dong, Feng Gu, Joao Gama, and Guangquan Zhang. Learning under concept drift: A review. *IEEE Transactions on Knowledge and Data Engineering*, 31(12):2346–2363, 2018.
- Arun Mallya, Dillon Davis, and Svetlana Lazebnik. Piggyback: Adapting a single network to multiple tasks by learning to mask weights. In *Proceedings of the European Conference on Computer Vision (ECCV)*, September 2018.
- Niki Martinel, Abir Das, Christian Micheloni, and Amit K Roy-Chowdhury. Temporal model adaptation for person re-identification. In *European conference on computer vision*, pp. 858–877. Springer, 2016.
- Marc Masana, Xialei Liu, Bartłomiej Twardowski, Mikel Menta, Andrew D Bagdanov, and Joost van de Weijer. Class-incremental learning: survey and performance evaluation on image classification. *arXiv preprint arXiv:2010.15277*, 2020.
- Michael McCloskey and Neal J Cohen. Catastrophic interference in connectionist networks: The sequential learning problem. In *Psychology of learning and motivation*, volume 24, pp. 109–165. Elsevier, 1989.
- John P Miller, Rohan Taori, Aditi Raghunathan, Shiori Sagawa, Pang Wei Koh, Vaishaal Shankar, Percy Liang, Yair Carmon, and Ludwig Schmidt. Accuracy on the line: on the strong correlation between out-of-distribution and in-distribution generalization. In Marina Meila and Tong Zhang (eds.), *Proceedings of the 38th International Conference on Machine Learning*, volume 139 of *Proceedings of Machine Learning Research*, pp. 7721–7735. PMLR, 18–24 Jul 2021. URL <https://proceedings.mlr.press/v139/miller21b.html>.
- Takeru Miyato, Shin-ichi Maeda, Masanori Koyama, and Shin Ishii. Virtual adversarial training: a regularization method for supervised and semi-supervised learning. *IEEE transactions on pattern analysis and machine intelligence*, 41(8):1979–1993, 2018.
- Saeid Motiian, Marco Piccirilli, Donald A Adjeroh, and Gianfranco Doretto. Unified deep supervised domain adaptation and generalization. In *Proceedings of the IEEE international conference on computer vision*, pp. 5715–5725, 2017.
- Hyeonseob Nam, HyunJae Lee, Jongchan Park, Wonjun Yoon, and Donggeun Yoo. Reducing domain gap by reducing style bias. In *Proceedings of the IEEE/CVF Conference on Computer Vision and Pattern Recognition (CVPR)*, pp. 8690–8699, June 2021.
- Jianmo Ni, Jiacheng Li, and Julian McAuley. Justifying recommendations using distantly-labeled reviews and fine-grained aspects. In *Proceedings of the 2019 Conference on Empirical Methods in Natural Language Processing and the 9th International Joint Conference on Natural Language Processing (EMNLP-IJCNLP)*, 2019.
- Yassine Ouali, Céline Hudelot, and Myriam Tami. An overview of deep semi-supervised learning. *arXiv preprint arXiv:2006.05278*, 2020.

- Alan Ramponi and Barbara Plank. Neural unsupervised domain adaptation in NLP—A survey. In *Proceedings of the 28th International Conference on Computational Linguistics*, pp. 6838–6855, Barcelona, Spain (Online), December 2020. International Committee on Computational Linguistics. doi: 10.18653/v1/2020.coling-main.603. URL <https://aclanthology.org/2020.coling-main.603>.
- Roger Ratcliff. Connectionist models of recognition memory: constraints imposed by learning and forgetting functions. *Psychological review*, 97(2):285, 1990.
- Sylvestre-Alvise Rebuffi, Alexander Kolesnikov, Georg Sperl, and Christoph H Lampert. icarl: Incremental classifier and representation learning. In *Proceedings of the IEEE conference on Computer Vision and Pattern Recognition*, pp. 2001–2010, 2017.
- Matthew Riemer, Ignacio Cases, Robert Ajemian, Miao Liu, Irina Rish, Yuhai Tu, , and Gerald Tesauro. Learning to learn without forgetting by maximizing transfer and minimizing interference. In *International Conference on Learning Representations*, 2019. URL <https://openreview.net/forum?id=BlgTShAct7>.
- Mark B Ring. Child: A first step towards continual learning. In *Learning to learn*, pp. 261–292. Springer, 1998.
- Anthony V. Robins. Catastrophic forgetting, rehearsal and pseudorehearsal. *Connect. Sci.*, 7:123–146, 1995.
- Elan Rosenfeld, Pradeep Kumar Ravikumar, and Andrej Risteski. The risks of invariant risk minimization. In *International Conference on Learning Representations*, 2021.
- Andrei A Rusu, Neil C Rabinowitz, Guillaume Desjardins, Hubert Soyer, James Kirkpatrick, Koray Kavukcuoglu, Razvan Pascanu, and Raia Hadsell. Progressive neural networks. *arXiv preprint arXiv:1606.04671*, 2016.
- Shiori Sagawa, Pang Wei Koh, Tatsunori B. Hashimoto, and Percy Liang. Distributionally robust neural networks for group shifts: On the importance of regularization for worst-case generalization. In *International Conference on Learning Representations*, 2020a.
- Shiori Sagawa, Aditi Raghunathan, Pang Wei Koh, and Percy Liang. An investigation of why overparameterization exacerbates spurious correlations. In Hal Daumé III and Aarti Singh (eds.), *Proceedings of the 37th International Conference on Machine Learning*, volume 119 of *Proceedings of Machine Learning Research*, pp. 8346–8356. PMLR, 13–18 Jul 2020b.
- Shiori Sagawa, Pang Wei Koh, Tony Lee, Irena Gao, Sang Michael Xie, Kendrick Shen, Ananya Kumar, Weihua Hu, Michihiro Yasunaga, Henrik Marklund, Sara Beery, Etienne David, Ian Stavness, Wei Guo, Jure Leskovec, Kate Saenko, Tatsunori Hashimoto, Sergey Levine, Chelsea Finn, and Percy Liang. Extending the WILDS benchmark for unsupervised adaptation. In *International Conference on Learning Representations*, 2022. URL <https://openreview.net/forum?id=z7p2V6KROOV>.
- Joan Serra, Didac Suris, Marius Miron, and Alexandros Karatzoglou. Overcoming catastrophic forgetting with hard attention to the task. In Jennifer Dy and Andreas Krause (eds.), *Proceedings of the 35th International Conference on Machine Learning*, volume 80 of *Proceedings of Machine Learning Research*, pp. 4548–4557. PMLR, 10–15 Jul 2018. URL <https://proceedings.mlr.press/v80/serral8a.html>.
- Hidetoshi Shimodaira. Improving predictive inference under covariate shift by weighting the log-likelihood function. *Journal of statistical planning and inference*, 90(2):227–244, 2000.
- Hanul Shin, Jung Kwon Lee, Jaehong Kim, and Jiwon Kim. Continual learning with deep generative replay. In I. Guyon, U. Von Luxburg, S. Bengio, H. Wallach, R. Fergus, S. Vishwanathan, and R. Garnett (eds.), *Advances in Neural Information Processing Systems*, volume 30. Curran Associates, Inc., 2017. URL <https://proceedings.neurips.cc/paper/2017/file/0efbe98067c6c73dba1250d2beaa81f9-Paper.pdf>.

- Kihyuk Sohn, David Berthelot, Nicholas Carlini, Zizhao Zhang, Han Zhang, Colin A Raffel, Ekin Dogus Cubuk, Alexey Kurakin, and Chun-Liang Li. Fixmatch: Simplifying semi-supervised learning with consistency and confidence. In H. Larochelle, M. Ranzato, R. Hadsell, M.F. Balcan, and H. Lin (eds.), *Advances in Neural Information Processing Systems*, volume 33, pp. 596–608. Curran Associates, Inc., 2020. URL <https://proceedings.neurips.cc/paper/2020/file/06964dce9adbb1c5cb5d6e3d9838f733-Paper.pdf>.
- Baochen Sun and Kate Saenko. Deep coral: Correlation alignment for deep domain adaptation. In *ECCV 2016 Workshops*, 2016.
- Antti Tarvainen and Harri Valpola. Mean teachers are better role models: Weight-averaged consistency targets improve semi-supervised deep learning results. *Advances in neural information processing systems*, 30, 2017.
- Eric Tzeng, Judy Hoffman, Trevor Darrell, and Kate Saenko. Simultaneous deep transfer across domains and tasks. In *Proceedings of the IEEE international conference on computer vision*, pp. 4068–4076, 2015.
- Gido M Van de Ven and Andreas S Tolias. Three scenarios for continual learning. *arXiv preprint arXiv:1904.07734*, 2019.
- Jesper E Van Engelen and Holger H Hoos. A survey on semi-supervised learning. *Machine Learning*, 109(2):373–440, 2020.
- Jindong Wang, Cuiling Lan, Chang Liu, Yidong Ouyang, Tao Qin, Wang Lu, Yiqiang Chen, Wenjun Zeng, and Philip Yu. Generalizing to unseen domains: A survey on domain generalization. *IEEE Transactions on Knowledge and Data Engineering*, 2022a.
- Ke Alexander Wang, Niladri Shekhar Chatterji, Saminul Haque, and Tatsunori Hashimoto. Is importance weighting incompatible with interpolating classifiers? In *International Conference on Learning Representations*, 2022b.
- Mei Wang and Weihong Deng. Deep visual domain adaptation: A survey. *Neurocomputing*, 312: 135–153, 2018.
- Zhenyi Wang, Li Shen, Le Fang, Qiuling Suo, Tieshang Duan, and Mingchen Gao. Improving task-free continual learning by distributionally robust memory evolution. In Kamalika Chaudhuri, Stefanie Jegelka, Le Song, Csaba Szepesvari, Gang Niu, and Sivan Sabato (eds.), *Proceedings of the 39th International Conference on Machine Learning*, volume 162 of *Proceedings of Machine Learning Research*, pp. 22985–22998. PMLR, 17–23 Jul 2022c. URL <https://proceedings.mlr.press/v162/wang22v.html>.
- Qizhe Xie, Minh-Thang Luong, Eduard Hovy, and Quoc V. Le. Self-training with noisy student improves imagenet classification. In *Proceedings of the IEEE/CVF Conference on Computer Vision and Pattern Recognition (CVPR)*, June 2020.
- Da Xu, Yuting Ye, and Chuanwei Ruan. Understanding the role of importance weighting for deep learning. In *International Conference on Learning Representations*, 2021.
- Shuliang Xu and Junhong Wang. Dynamic extreme learning machine for data stream classification. *Neurocomputing*, 238:433–449, 2017.
- Sijie Yan, Yuanjun Xiong, Kaustav Kundu, Shuo Yang, Siqi Deng, Meng Wang, Wei Xia, and Stefano Soatto. Positive-congruent training: Towards regression-free model updates. In *Proceedings of the IEEE/CVF Conference on Computer Vision and Pattern Recognition*, pp. 14299–14308, 2021.
- Xiangli Yang, Zixing Song, Irwin King, and Zenglin Xu. A survey on deep semi-supervised learning. *CoRR*, abs/2103.00550, 2021. URL <https://arxiv.org/abs/2103.00550>.
- Christopher Yeh, Anthony Perez, Anne Driscoll, George Azzari, Zhongyi Tang, David Lobell, Stefano Ermon, and Marshall Burke. Using publicly available satellite imagery and deep learning to understand economic well-being in africa. *Nature Communications*, 2020.

- Haiyan Yin, Ping Li, et al. Mitigating forgetting in online continual learning with neuron calibration. *Advances in Neural Information Processing Systems*, 34:10260–10272, 2021.
- Jaehong Yoon, Eunho Yang, Jeongtae Lee, and Sung Ju Hwang. Lifelong learning with dynamically expandable networks. In *International Conference on Learning Representations*, 2018. URL <https://openreview.net/forum?id=Sk7KsfW0->.
- Friedemann Zenke, Ben Poole, and Surya Ganguli. Continual learning through synaptic intelligence. In *International Conference on Machine Learning*, pp. 3987–3995. PMLR, 2017.
- Chen Zeno, Itay Golan, Elad Hoffer, and Daniel Soudry. Task agnostic continual learning using online variational bayes. *arXiv preprint arXiv:1803.10123*, 2018.
- Runtian Zhai, Chen Dan, Zico Kolter, and Pradeep Ravikumar. Doro: Distributional and outlier robust optimization. In Marina Meila and Tong Zhang (eds.), *Proceedings of the 38th International Conference on Machine Learning*, volume 139 of *Proceedings of Machine Learning Research*, pp. 12345–12355. PMLR, 18–24 Jul 2021a.
- Runtian Zhai, Chen Dan, Arun Suggala, J. Zico Kolter, and Pradeep Ravikumar. Boosted cvar classification. In M. Ranzato, A. Beygelzimer, Y. Dauphin, P.S. Liang, and J. Wortman Vaughan (eds.), *Advances in Neural Information Processing Systems*, volume 34, pp. 21860–21871. Curran Associates, Inc., 2021b. URL <https://proceedings.neurips.cc/paper/2021/file/b691334ccf10d4ab144d672f7783c8a3-Paper.pdf>.
- Runtian Zhai, Chen Dan, Zico Kolter, and Pradeep Ravikumar. Understanding why generalized reweighting does not improve over erm. *arXiv preprint arXiv:2201.12293*, 2022.
- Xiaohua Zhai, Avital Oliver, Alexander Kolesnikov, and Lucas Beyer. S4l: Self-supervised semi-supervised learning. In *Proceedings of the IEEE/CVF International Conference on Computer Vision*, pp. 1476–1485, 2019.
- Hongyi Zhang, Moustapha Cisse, Yann N. Dauphin, and David Lopez-Paz. mixup: Beyond empirical risk minimization. In *International Conference on Learning Representations*, 2018. URL <https://openreview.net/forum?id=r1Ddpl-Rb>.
- Marvin Zhang, Henrik Marklund, Nikita Dhawan, Abhishek Gupta, Sergey Levine, and Chelsea Finn. Adaptive risk minimization: Learning to adapt to domain shift. In M. Ranzato, A. Beygelzimer, Y. Dauphin, P.S. Liang, and J. Wortman Vaughan (eds.), *Advances in Neural Information Processing Systems*, volume 34, pp. 23664–23678. Curran Associates, Inc., 2021. URL <https://proceedings.neurips.cc/paper/2021/file/c705112d1ec18b97acac7e2d63973424-Paper.pdf>.

Appendix

Table of Contents

A Literature Review	14
A.1 Distribution Shift	14
A.2 Continual Learning	15
A.3 Domain Adaptation	17
A.4 Semi-supervised Learning	18
A.5 Comparing OCL-PDS to Previous Settings	19
B The Divergence Function	20
B.1 Existing Divergence Functions	20
B.2 Divergence Function for OCL-PDS	21
B.3 ϵ -KL-Divergence	21
C Benchmark Details	22
C.1 The 3-step Procedure to Benchmark OCL-PDS	22
C.2 CivilComments-WPDS	22
C.3 FMoW-WPDS	24
C.4 Amazon-WPDS	26
C.5 Poverty-WPDS	26
D Algorithm Details	26
E Experiment Details	29
E.1 Setup	29
E.2 Results	29

A LITERATURE REVIEW

A.1 DISTRIBUTION SHIFT

Distribution shift in machine learning refers to the scenario where the model is tested on a distribution Q different from the distribution P on which it was trained, which is different from the conventional machine learning setting where the training and testing sets are *i.i.d.* sampled from the same distribution. Distribution shift is studied in a number of areas in machine learning, including domain adaptation, continual learning, transfer learning, fair machine learning, long-tailed learning, etc. See Table 2 of Gulrajani & Lopez-Paz (2021) and Table 2 of Wang et al. (2022a) for a comparison among these areas.

In general, there are two types of distribution shift problem: Domain shift and subpopulation shift (Koh et al., 2021; Sagawa et al., 2022). In domain shift, the training and testing distributions contain different domains, and the goal is to generalize to new domains. This problem is also called Out-of-distribution (OOD) generalization, such that the training set is ID (in-distribution) and the test set is OOD. Related areas include domain adaptation, domain generalization, transfer learning, etc. In subpopulation shift, the training and testing distributions consist of the same domains, but the relative proportions are different. Related areas include fair machine learning, long-tailed learning (learning with imbalanced classes), etc. The difference between these two is that in subpopulation shift, the supports of the training and testing data distributions are the same, while it is not for domain shift.

A lot of methods have been proposed to train models that are robust to distribution shift. Here we introduce two general methods, and in the subsequent sections we will talk about methods for

specific areas. The most classic method is *importance weighting* (Shimodaira, 2000), which multiplies the loss on sample x with an importance weight $\frac{Q(x)}{P(x)}$, because $\int f(x)dQ = \int \frac{Q(x)}{P(x)}dP$. This method requires that $P(x) > 0$ for all x such that $Q(x) > 0$, *i.e.* only works for subpopulation shift. Another general method that is widely used today is *Distributionally Robust Optimization (DRO)* (Duchi & Namkoong, 2018), which assumes that $Q \in U(P)$ where $U(P)$ is the *uncertainty set* that contains a family of distributions that are close to P . Then, DRO trains the model on the worst distribution in $U(P)$ (with the highest empirical risk), so as to ensure that the model can do well on any distribution in $U(P)$ which includes Q . A lot of variants of DRO have been proposed and being used today (Hashimoto et al., 2018; Hu et al., 2018; Sagawa et al., 2020a; Lahoti et al., 2020; Zhai et al., 2021a;b). However, there is also a recent line of work that points out some problems with these methods both empirically and theoretically (Byrd & Lipton, 2019; Sagawa et al., 2020b; Gulrajani & Lopez-Paz, 2021; Xu et al., 2021; Wang et al., 2022b). Remarkably, a recent paper Zhai et al. (2022) proved the surprising result that generalized reweighting (GRW) methods, a broad family of methods including importance weighting, DRO and a lot more, cannot do better than ERM for linear models and NTK neural networks (Jacot et al., 2018). Thus, there is still a huge room of improvement for methods for distribution shift.

A.2 CONTINUAL LEARNING

Continual learning (CL), also known as lifelong learning, comes from the philosophy that a learning agent should be able to continually learn new knowledge and improve itself with new data on its own. As detailed in Ring (1998), a continual learner should be able to learn context-dependent knowledge autonomously, incrementally and hierarchically. A more recent paper Liu (2020) introduced the concept of *on-the-job learning*, where the learner is required to detect new tasks on its own, collect data for the new tasks and then learn with the data. Given these general philosophical ideals, the goal of CL is to mathematically formulate a problem setting that reflects these ideals. Here we point our readers to the Avalanche library (Lomonaco et al., 2021), a recently released Python library that contains many benchmarks and algorithms of continual learning.

A.2.1 SETTINGS

There are a bunch of continual learning settings, and here we discuss the most widely studied ones.

Task-incremental CL. In this setting, N tasks T_1, \dots, T_N are sequentially given to the learner, who is required to learn these tasks one by one without forgetting the previous tasks. The learner cannot see the old tasks while learning a new one, but it has a memory buffer in which it can store data from previous tasks. The goal is to perform well on all N tasks, and the performance is usually evaluated with the average or the minimum of the performances on all tasks. A related setting is class-incremental CL where new classes sequentially appear. Task-incremental CL is the oldest setting that dates back to McCloskey & Cohen (1989), which trained a feed-forward network to first learn addition with one and then learn addition with two, and found that when learning the second task the network forgot the first one. This work pinpointed the *catastrophic forgetting* problem, and as a result many researchers today believe that “the central problem of continual learning is to overcome the catastrophic forgetting problem” (Aljundi et al., 2019c).

Two related problems are domain-incremental CL and class-incremental CL. In domain-incremental CL, the data of each task comes from a different domain. In class-incremental CL, samples from new classes appear one by one.

Task-aware CL. In this setting, the tasks are not sequentially given. Rather, each sample has a “task descriptor” indicating which task it belongs to. This setting dates back to the early paper Ratcliff (1990) which trained a multi-layer encoder model to learn four vectors A, B, C and D, which were provided in a cyclic fashion: ABCDABCDABCD... Then, Lopez-Paz & Ranzato (2017) studied task-aware CL in the online learning setting where samples come in an online stream. The goal of task-aware CL is the same as task-incremental CL: To perform well on all N tasks.

Task-agnostic CL. In task-agnostic CL, each sample still belongs to a certain task, but the “task descriptor” is not provided. The model is still required to do well on all N tasks, and it is still

evaluated by the average or the minimum of the performances on all tasks. Algorithms for this setting usually do *task inference*, i.e. inferring the task from the input (Van de Ven & Tolia, 2019), where they assume that samples from the same task are closer to each other. Note that our definition is different from some previous work, and some previous work on task-agnostic CL like Zeno et al. (2018) is in fact under the task-free setting.

Task-free CL. In task-free CL, there is no task at all. The data comes in an online stream and each sample only appears once. This setting was first introduced in Aljundi et al. (2019b), where they split a data domain into several partitions, and sequentially present each partition to the model. At the end of training, the model is evaluated on the entire data domain, *i.e.* the union of all the partitions. Thus, if the learner is allowed to store all samples and train the model on them, then the problem becomes equivalent to supervised learning. However, the model cannot store all samples because the storage size is assumed to be limited. This problem is also called the *data incremental learning* problem in De Lange et al. (2021). We can see that in this problem, the training is online (partitions are sequentially given), but the evaluation is offline (test once on the entire domain).

Online Continual Learning (OCL). We study OCL in this work. It is a variant of task-free CL as there is no task in OCL. The key characteristic of OCL is that *both training and evaluation are online*, which is different from the previous task-free CL problem. In OCL, for each new data batch, the model is first evaluated on it and then trained on it. Thanks to the online evaluation, we can study the real “lifelong” learning setting in OCL where the time horizon is infinite, which is not possible in the previous task-free CL problem. Note that the term “online continual learning” was used in quite a few previous papers, but most of them refer to “continual learning with online data” (such as Yin et al. (2021)) which is not the OCL setting we define in this work.

Time series analysis. A related area is time series analysis, where the data comes from a non-stationary online distribution, and the task is to predict future data with the current and past observations. We can see that distribution shift naturally exists in the formulation of time series analysis, but we fail to find much work about dealing with distribution shift with time series analysis.

One setting in time series analysis that is similar to OCL is temporal covariate shift (TCS), which was first introduced in Du et al. (2021). TCS makes the covariate shift assumption: $P(Y|X)$ is fixed while $P(X)$ shifts with time. The goal of TCS is r -step ahead prediction, *i.e.* predicting the labels for inputs whose ground truth labels will be revealed r steps later. Other recent papers that study distribution shift with time series analysis include Duan et al. (2022); Gagnon-Audet et al. (2022); Kim et al. (2022).

A.2.2 METHODS

Rehearsal based methods. The concept of “rehearsal” was first introduced in Ratcliff (1990); Robins (1995). Rehearsal-based methods store samples in an operational memory (a memory buffer). When the learner learns a new task, it also reviews the old samples in this buffer in order to prevent catastrophic forgetting, known as *experience replay*. Almost all previous work assumed that the buffer has a fixed size, so two key questions for these methods are: (i) Which samples to be store in the buffer, and (ii) Which samples to be replayed to the learner.

For problem (i), the most widely used strategy is Reservoir sampling (Isele & Cosgun, 2018) which maintains the buffer distribution to be the average of all task distributions. Other variants include Chrysakis & Moens (2020); Kim et al. (2020). For problem (ii), MIR (Aljundi et al., 2019a) selects the samples with the highest loss increase after a “virtual update” step to be replayed, while MaxLoss (Lin et al., 2022) selects the samples with the highest loss after virtual update. Moreover, experience replay (ER) can be combined with other methods. For example, MER (Riemer et al., 2019) combines ER with meta learning, GMED (Jin et al., 2021) combines ER with adversarial attack, and Wang et al. (2022c) combines ER with DRO.

There are alternative ways to use this buffer. For example, iCaRL (Rebuffi et al., 2017) stores “exemplars” in the buffer and uses a nearest neighbor classifier with these exemplars. In other words, samples in the buffer are not used for training, but used for inference. Similarly, Continual Prototype Evolution (De Lange & Tuytelaars, 2021) maintains and continually updates a prototype for each class, and uses a nearest neighbor classifier for inference. Another way is introduced

in GEM (Lopez-Paz & Ranzato, 2017), where the buffered samples are not directly replayed for training, but instead used to find a “pseudo gradient” with a convex optimization problem so that the loss on previous tasks won’t increase. Variants of GEM include A-GEM (Chaudhry et al., 2019) and GSS (Aljundi et al., 2019c).

Since the buffer size is assumed to be limited, a bunch of previous papers studied how to utilize the buffer space more efficiently. One line of work proposes to learn the distributions of previous tasks with a generative model, which includes DGR (Shin et al., 2017), FearNet (Kemker & Kanan, 2018) and so on.

Regularization based methods. The high-level idea of these methods is to not change the model weights too much so that the model’s performance on previous tasks won’t drop too much. One type of methods directly add to the objective a penalty term which keeps the model weights close to the old weights, such as EWC (Kirkpatrick et al., 2017). Another type of methods use *synaptic regularization* (Zenke et al., 2017; Aljundi et al., 2019b) which controls the learning rate of each weight, so that more influential weights change more slowly.

Architecture based methods. These methods continually update the model architecture in order to learn the new tasks. One type of method changes the architecture by adding a “mask” to some weights, such as Piggyback (Mallya et al., 2018) which learns a mask for each task, and learning a hard attention mask with gradient descent (Serra et al., 2018). Another type of method uses the isolation approach where the model has two parts - A shared part and a task specific part. When a new task arrives, the shared part is updated very little, and a new task specific part is learned on the new task. Examples of isolation methods include progressive neural network (PNN) (Rusu et al., 2016), Learning without Forgetting (LwF) (Li & Hoiem, 2017), dynamically expandable network (DEN) (Yoon et al., 2018), etc.

A.3 DOMAIN ADAPTATION

Domain adaptation (DA) is a type of distribution shift where “the tasks are the same, and the differences are only caused by domain divergence” (Wang & Deng, 2018). There is a source distribution P and a target distribution Q with distribution shift from P to Q . During training, the learner is provided with samples from both the source and the target distributions, and conditioning on whether the samples from the target distribution is labeled, partially labeled or unlabeled, DA is classified as supervised, semi-supervised and unsupervised DA. Particularly, in supervised DA, the number of target samples is usually very small so that training on these target samples alone cannot lead to a good model. A related area is *domain generalization* (Gulrajani & Lopez-Paz, 2021) where the learner does not have any samples from the target domain, even unlabeled ones.

In general, a DA algorithm consists of two parts: Feature alignment and class alignment. The goal of *feature alignment* is to train a feature encoder Φ that can encode *invariant features*, *i.e.* the images of the source and target domains in the feature space are close to each other, or $\Phi(P) \approx \Phi(Q)$. As summarized in Wang & Deng (2018), there are two common ways to achieve feature alignment. The first one is adversarial-based, *i.e.* training a domain discriminator to distinguish features from the source and target domains, and the features are aligned if this discriminator cannot achieve a high performance. Methods of this type include DANN (Ganin et al., 2016), SagNet (Nam et al., 2021), etc. The second one is discrepancy-based, *i.e.* minimizing a divergence function between $\Phi(P)$ and $\Phi(Q)$, also called the “confusion alignment loss” in Motiian et al. (2017). Methods of this type include CORAL (Sun & Saenko, 2016), IRM (Arjovsky et al., 2019), ARM (Zhang et al., 2021), etc. However, there are also some papers that point out the problems within these methods (Rosenfeld et al., 2021; Gulrajani & Lopez-Paz, 2021).

Moreover, even if we have learned a feature encoder Φ such that $\Phi(P) \approx \Phi(Q)$, we cannot be sure that the same classifier works for both domains, because samples of different classes in P and Q might be mapped to the same latent feature. Thus, the goal of *class alignment* is either to make sure that samples of the same class are mapped together, or to train a new classifier w' which works for $\Phi(Q)$. Note that class alignment requires labels from the target domain which are unavailable in unsupervised domain adaptation or domain generalization. For instance, Tzeng et al. (2015) used soft labels for class alignment, Long et al. (2016) minimized the cross entropy on the target data

while using a residual block to keep the source and target classifiers close, and Motiian et al. (2017) used a similarity penalty between samples from different classes.

A.4 SEMI-SUPERVISED LEARNING

In many applications, the number of labeled samples are limited, but there are also a large number of unlabeled samples. For example, for image classification tasks, while the labels are hard to obtain, free images can be very easily retrieved from the internet. Semi-supervised learning studies how to train a model on a small set of labeled samples and a large set of unlabeled samples. This is an old area of research and there is a very rich body of work, on which we do not intend to make an exhaustive survey here. Here we briefly discuss several types of methods that are widely being used today, and more methods can be found in surveys such as Van Engelen & Hoos (2020).

Generating labels for unlabeled samples. Perhaps the most direct and intuitive way of leveraging the unlabeled samples is to try to generate labels for them, and then train the model over all samples as if they were all labeled. The simplest of such methods is pseudo-labeling (Lee, 2013), which first trains a model over the labeled samples alone and then uses this model to pseudo-label the unlabeled samples. This method assumes that the labeled and unlabeled samples come from the same underlying distribution, so if a model can do well on the labeled samples, it should be able to generate good pseudo labels for the unlabeled samples. However, the quality of pseudo labels depends on the generalization ability of the model, and if the number of labeled samples is too small, then the pseudo labels could contain large systematic label noise. Thus, a number of techniques have been proposed to improve pseudo-labeling.

One such technique is *consistency regularization*, which is based on the following observation: Given two transformations x' and x'' of the same sample x , their labels should be the same. For instance, FixMatch (Sohn et al., 2020) uses two augmentation methods: a weak one and a strong one. It generates pseudo labels on the weakly augmented sample x' , and trains the model on the strongly augmented one x'' . Similarly, Noisy Student (Xie et al., 2020) also uses a weak and a strong augmentation, but it alternates between teacher phases which generate pseudo labels and student phases which learn these labels, until convergence. Some other work defines x' and x'' as the outputs of the model at different epochs, such as Temporal Ensembling (Laine & Aila, 2017) and Mean Teachers (Tarvainen & Valpola, 2017). There is also a line of work that leverages adversarial attack, such as Virtual Adversarial Training (VAT) (Miyato et al., 2018).

Interpolation based methods. These methods train the model on the interpolation between labeled and unlabeled samples. This type of methods was initially introduced in MixUp (Zhang et al., 2018), which interpolates between two labeled samples to combat label noise and adversarial attack as it makes the model have linear behavior in between samples. This method is then applied to semi-supervised learning in MixMatch (Berthelot et al., 2019), which combines MixUp with a lot of other techniques including pseudo labeling.

Self-supervised learning. The high-level idea of self-supervised learning (also known as representation learning) is to train a good feature extractor on the unlabeled data set with an auxiliary task (upstream task), and then train a classifier on top of it on the labeled data set (downstream task). The most famous and widely-used self-supervised learning technique is masked language modeling (MLM) in NLP (Devlin et al., 2018), where the auxiliary task is predicting a masked word within a sentence. MLM has achieved great success in NLP as the feature extractor it learns can be applied to almost any language task and lead to good performance.

Inspired by the success of MLM, people also try to apply self-supervised learning to vision tasks. For example, Doersch et al. (2015) extracts random pairs of patches from each image where the auxiliary task is to learn the relative position between each pair of patches, and Gidaris et al. (2018) rotates each image with different angles where the auxiliary task is to learn this rotation angle, which is applied to semi-supervised learning in S^4L (Zhai et al., 2019). Today, the most widely used technique is *contrastive learning*, which extracts different views from each image, and the auxiliary task is to learn which views come from the same image. The feature extractor is trained to learn the similarity between two views: similar if they come from the same image, and different if they do not. This idea was first introduced in Bachman et al. (2019). Currently the most popular

contrastive learning methods include SimCLR (Chen et al., 2020), MoCo (He et al., 2020), BYOL (Grill et al., 2020), SwAV (Caron et al., 2020), etc.

A.5 COMPARING OCL-PDS TO PREVIOUS SETTINGS

This work is related to three areas: Domain adaptation (DA), continual learning (CL), and semi-supervised learning (SSL). DA provides a learner with labeled samples from a source distribution P and (partially labeled, unlabeled, or no) samples from a target distribution Q , and requires it to learn a good model on Q . Surveys on DA include Lu et al. (2018); Wang & Deng (2018); Ramponi & Plank (2020); Wang et al. (2022a). In CL, the learner needs to continually learn new knowledge from an online stream of data, and settings include task-incremental CL (including domain-incremental and class-incremental CL), task-aware CL, task-agnostic CL, task-free CL and OCL. Surveys on CL include De Lange et al. (2021); Masana et al. (2020); Biesialska et al. (2020). SSL requires the model to learn from a training set consisting of few labeled samples and many unlabeled samples. Surveys on SSL include Van Engelen & Hoos (2020); Ouali et al. (2020); Yang et al. (2021). A more thorough literature review can be found in Appendix A.

There are several differences between the OCL-PDS problem and conventional DA and CL settings. We now explain why our formulation is more relevant and thus useful for industry practitioners.

PDS vs DA. Domain adaptation and related areas like domain generalization mostly study big, one-shot distribution shifts, *i.e.* training and testing on two very different domains. This has two problems: (i) Practitioners seldom directly apply a model to a very different domain in industry. What they would usually do is to train one model for each domain, and train a domain classifier to distinguish among different domains; (ii) Even if a model needs to be applied to a different domain, what practitioners would usually do is first collecting some labeled data from the new domain and then fine-tuning the model on the data. It is rarely the case in industry that there are no labels from the target domain as in unsupervised DA, or even no samples at all as in domain generalization.

On the contrary, OCL-PDS is a very common scenario in industry. First, PDS has been widely reported to cause gradual performance drop in industrial applications (Martinel et al., 2016; Jaidka et al., 2018; Huang & Paul, 2019), and practitioners do not often train new models for PDS. Second, OCL-PDS studies the semi-supervised setting where the practitioners can collect a few labeled samples and many unlabeled samples, which is more realistic than no labels or samples at all.

OCL vs CL. OCL falls under the *task-free continual learning* setting where there is a fixed task and no clear task boundary. It is different from conventional *task-incremental CL* in three ways:

1. Task-incremental CL has N distinct tasks and requires a single model to learn them all, but what practitioners would usually do in this case is to train N models, one for each task. In contrast, in OCL-PDS the task is fixed but the data distribution is gradually and constantly changing, so it is more reasonable to use and continually fine-tune a single model.
2. Conventional CL requires the model to remember *all* N tasks with a storage of size M . For studying PDS, this requirement has three problems:
 - (i) It is not so practical as not all old knowledge is important - A satellite image classifier in 2022 does not need to do very well on images in 2002 with different landscapes.
 - (ii) In the “lifelong” setting with N continually growing, we need M to also grow with N (like $M = O(N)$). With a fixed M , it is infeasible to remember *everything*.
 - (iii) Many applications have *concept shift* where $P(Y|X)$ could change, so remembering old knowledge can be harmful to the performance on the current data distribution. For instance, languages that were not considered offensive 20 years ago are widely recognized as offensive today thanks to the recent civil rights movements.

Thus, OCL-PDS only requires remembering recent knowledge and important knowledge.

3. Our setting assumes infinite storage unlike previous settings. This is an over-optimistic assumption as there are real applications where the amount of data is so huge that it is impossible to store all data even for big companies. Real applications also have other considerations such as privacy restrictions so that the data cannot be stored forever. However, storage size is rarely the bottleneck of industrial applications. The point of this assumption

is to **not put too much effort into utilizing every bit of storage**. Instead, we want to focus on other questions, such as how to leverage unlabeled data and how to improve training efficiency, that are more important to real applications.

Other similar settings. First, OCL is different from the task-free CL formulated in some previous work (Aljundi et al., 2019b; de Masson d’Autume et al., 2019; Wang et al., 2022c) where the training is online but the evaluation is offline. Previous work typically splits the data domain into different sections which the learner sees sequentially online, and in the end the learner is evaluated on the entire domain offline. On the contrary, **both training and evaluation in OCL are online**: For each new batch, the model is first tested and then trained on it. Thus, it is possible to have the real “lifelong” learning setting in OCL where the time horizon $T = \infty$ but not in the previous setting.

Second, OCL-PDS is closely related to reinforcement learning (RL) and time series analysis. The difference from RL is that in RL, the agent can learn from a number of episodes, while in OCL-PDS the evaluation is online and one-pass. The difference from time series analysis is that time series focuses on predicting on future data and does not care about forgetting. Moreover, though PDS naturally resides in time series data, in our literature review (Appendix A) we find little work about handling PDS with time series analysis. One such line of work is temporal covariate shift (TCS) (Du et al., 2021) that assumes that $P(Y | X)$ is always fixed, which is not assumed in OCL-PDS.

Third, there are two related settings, *gradual domain adaptation (GDA)* (Kumar et al., 2020) and *gradual concept drift* (Liu et al., 2017; Xu & Wang, 2017), that also study gradual shift from one domain to another with a series of distributions P_0, P_1, \dots, P_T , where P_0 is the source domain, P_T is the target domain, and P_t and P_{t+1} is close for each t . Both settings only require good adaptation performance and do not consider forgetting. However, **the concept of regression set widely exists in modern deep learning applications**, and no forgetting on the regression set is a critical issue.

Finally, Cai et al. (2021) proposed a similar OCL setting, where the model is also first evaluated on the new batch and then trained on it. However, OCL-PDS has two important distinctions: (i) Cai et al. (2021) considered a fully supervised setting while OCL-PDS mainly uses a semi-supervised setting that is more common in practice; (ii) OCL-PDS uses different evaluation metrics, and in particular measures the regression set performance which was not considered in Cai et al. (2021).

B THE DIVERGENCE FUNCTION

In this section, we dive deep into one important problem in the formulation of the OCL-PDS problem: How to choose the divergence function $\text{Div}(P \parallel Q)$ that guarantees the continuity of the distribution shift? As mentioned in Section 2.2, $\text{Div}(P \parallel Q)$ refers to the divergence *from P to Q*, and ideally we want it to reflect *the performance of a model which is trained on P and tested on Q*.

To study this problem, first we will review existing divergence functions, and then we will show that an ideal divergence function for OCL-PDS should be *asymmetric and bounded*, which is unfortunately not satisfied by any popular divergence function. Finally, we will introduce the ϵ -KL-divergence which is used in this work.

B.1 EXISTING DIVERGENCE FUNCTIONS

This part is based on the NeurIPS tutorial by Gretton et al. (2019). Generally speaking, there are two types of existing divergence functions: *Integral probability metrics (IPMs)* and ϕ -divergences. To quickly understand these two types of divergence, think about how to determine whether two distributions P and Q are equal. There are two ways in general: (a) Compute $P - Q$ and see if it is zero almost everywhere, and (b) Compute P/Q and see if it is one almost everywhere. IPMs correspond to method (a) and ϕ -divergences correspond to method (b).

IPMs. An IPM is defined as $\text{Div}(P \parallel Q) = \sup_{f \in \mathcal{F}} [\mathbb{E}_{X \sim P} f(X) - \mathbb{E}_{Y \sim Q} f(Y)]$ for some function family \mathcal{F} . Examples include total variation (TV) defined as $\text{Div}(P \parallel Q) = \frac{1}{2} \int |P(x) - Q(x)| dx$, MMD defined as $\text{Div}(P \parallel Q) = \|\mathbb{E}_{X \sim P} [\pi(X)] - \mathbb{E}_{Y \sim Q} [\pi(Y)]\|_{\mathcal{H}}$ for some feature mapping π and reproducing kernel Hilbert space \mathcal{H} , and the Wasserstein distance defined as $\text{Div}(P \parallel Q) = \inf_{\gamma \in \Gamma(P, Q)} \int D(x, y) d\gamma(x, y)$ for some distance function $D(\cdot, \cdot)$.

ϕ -divergences. A ϕ -divergence is defined as $\text{Div}_\phi(P \parallel Q) = \int \phi\left(\frac{dP}{dQ}\right) dQ$. For example, when $\phi = -\log$, then the ϕ -divergence becomes the reverse KL-divergence, where the popular KL-divergence is defined as $D_{KL}(Q \parallel P) = \int_x Q(x) \log\left(\frac{Q(x)}{P(x)}\right) dx$ (note that P and Q are reversed). Total variation is the only non-trivial function that is both an IPM and a ϕ -divergence.

B.2 DIVERGENCE FUNCTION FOR OCL-PDS

In this part, we show that an ideal divergence function for the OCL-PDS problem should be asymmetric and bounded.

Asymmetric. Suppose we have two very different data domains A and B . Let $P = A$ and $Q = 0.5A + 0.5B$. A model trained on P would have a very poor performance on Q , because it has never seen any samples from domain B . On the other hand, a model trained on Q could have a good performance on P , because it has seen samples from both A and B . Thus, in this example, we would like to have $\text{Div}(P \parallel Q) > \text{Div}(Q \parallel P)$, so Div should be asymmetric.

Bounded. The KL-divergence is widely used in machine learning literature, but one problem is that it is unbounded. Recall that in the OCL-PDS problem formulation, we assume that $\text{Div}(D_t \parallel D_{t+1}) < \rho$ for all t . Now consider what would happen if the function Div is unbounded, and we want to introduce data from new domains into the problem. Specifically, Q contains samples from new domains that are not in P , *i.e.* there exists x such that $Q(x) > 0$ and $P(x) = 0$. In this situation, we must have $\text{Div}(P \parallel Q) = \infty$, no matter how small $Q(x)$ is. Therefore, **if Div is unbounded like the reverse KL-divergence, then we could never introduce new domains into the problem**, which is not desirable. There is a variant of the KL-divergence called JS-divergence, which is defined as $\text{Div}(P \parallel Q) = \frac{1}{2} [D_{KL}(P \parallel M) + D_{KL}(Q \parallel M)]$ where $M = \frac{1}{2}P + \frac{1}{2}Q$. Although it is bounded, it is also symmetric, so it is not ideal for OCL-PDS.

B.3 ϵ -KL-DIVERGENCE

In this work, we use the ϵ -KL-divergence defined as follows:

$$\begin{aligned} \text{Div}(P \parallel Q) &= \mathbb{E}_{X \sim P}[g(X)] + \mathbb{E}_{Y \sim Q}[\log(-g(Y))] + 1 \\ \text{where } g(x) &= -\frac{Q(x)}{\max\{P(x), \epsilon\}} \end{aligned} \tag{1}$$

This divergence functions has the following properties:

- (i) This function is a lower bound of the reverse KL-divergence, and it is bounded.
- (ii) If $g(x) = -\frac{Q(x)}{P(x)}$, then this function is equivalent to the reverse KL-divergence (which is its dual formulation). Thus, if for any x such that $Q(x) > 0$, we have $P(x) \geq \epsilon$, then the ϵ -KL-divergence is equivalent to the reverse KL-divergence.
- (iii) In the case where Q contains new domains that are not in P , for example $Q = (1 - \beta)P + \beta\tilde{P}$ for some $\tilde{P} \perp P$, then $\text{Div}(P \parallel Q) = \beta + \beta \log \frac{\beta}{\epsilon} + (1 - \beta) \log(1 - \beta) \approx \beta + D_{KL}(Q \parallel (1 - \epsilon)P + \epsilon\tilde{P})$.

From the properties, we can see that what we are doing in the ϵ -KL-divergence is essentially adding an ϵ lower bound to the denominator of $g(x)$ so that the function becomes bounded.

Example. Given two groups A and B , let $\rho = 0.17$ and $\epsilon = 0.02$. Then, we have the following group weight allocation schedule which is widely used in our benchmarks:

Limitations. The major limitation of the ϵ -KL-divergence is that it cannot measure how similar two domains are. For example, suppose we have three domains: A , B and C , and they do not overlap with one another. Samples in A and B are very similar, but they are vastly different from samples in C . In this case, a model trained on A can have a good performance on $0.5A + 0.5B$,

Table 2: Sample group weight allocation schedule.

t	A	B	$\text{Div}(D_t \parallel D_{t+1})$
0	1.00	0.00	0.1661
1	0.90	0.10	0.1674
2	0.69	0.31	0.1663
3	0.41	0.59	0.1595
4	0.15	0.85	0.1625
5	0.00	1.00	

but a poor performance on $0.5A + 0.5C$. However, for the ϵ -KL-divergence, we have $\text{Div}(A \parallel 0.5A + 0.5B) = \text{Div}(A \parallel 0.5A + 0.5C)$. We can see that the ϵ -KL-divergence cannot measure the similarity between A and B or A and C . Another limitation is that the choice of ϵ is arbitrary and can affect the function value. Nevertheless, even with these two limitations, we still believe that the ϵ -KL-divergence is suitable for the OCL-PDS problem. Finally, keep in mind that no divergence function can cover every facet of real problems in practice, and that’s why we have three important checking steps in our benchmarking procedure described in Section C.1.

C BENCHMARK DETAILS

We build 4 new benchmarks for OCL-PDS following the guidelines listed below:

- We only use public datasets in this work.
- The benchmarks should cover a wide variety of tasks.
- The benchmarks should be realistic and can reflect the real PDS in industry.
- Naïve methods should be poor on these benchmarks, so special methods are necessary.

C.1 THE 3-STEP PROCEDURE TO BENCHMARK OCL-PDS

Here we provide the 3-step procedure we use to benchmark OCL-PDS on an existing dataset:

1. Separate the data into groups (domains). For example, group the data by year. Then, do an **OOD check** which verifies that there is a significant distribution shift across the groups.
2. Assign shifting group weights to the batches to create a distribution shift across the groups.⁴ Then, do a **shift continuity check** which verifies that the shift is continuous (not abrupt).
3. Design a separate regression set which does not intersect with any online batch. Then, do a **regression check** which verifies that naïve methods have regression on this set.

Moreover, for each batch (including the regression set), we randomly divide the batch into a training batch and a test batch. The learner sees the training batches during OCL, and the separate test batches are used to evaluate the recent and regression set performances. The model is never evaluated on training samples it has already seen because it is not useful as the learner can store all these samples in its buffer. In Appendix C.2, we will demonstrate in detail how to build one of our benchmarks with this 3-step procedure, including how to carry out the three important checking steps.

In the rest of this section, we will first demonstrate in detail how to use the 3-step procedure described in Section C.1 with the CivilComments-WPDS benchmark as an example. Then, we will present the details for all other datasets, but without the detailed benchmarking procedure.

C.2 CIVILCOMMENTS-WPDS

Here we present how we construct CivilComments-WPDS from the CivilComments-Wilds dataset with the 3-step procedure including the 3 important checking steps.

⁴This is not equivalent to *group shift* or *subpopulation shift* as studied in fair machine learning and long-tailed learning (learning with imbalanced classes). The group weights here are used to control the scale of the divergence from being too big. We simulate a gradual shift by continuously shifting the group weights.

Step 1: Separate the data into groups. First, we investigate the metadata we have in this dataset. In CivilComments-Wilds, apart from the target label, each sample also has the following annotations: whether it contains a certain topic (male, female, LGBTQ, christian, muslim, other religions, black, white), and whether it contains a certain type of toxicity (identity attack, explicit sexual, etc.). Based on this metadata, we can model the distribution shift with the shift in hot topics. We separate the samples into four groups according to their topics, as shown in the following table.

Table 3: Samples in CivilComments-Wilds are separated into 4 groups by their topics.

Group	Topic	# Samples	# Toxic	# Non-toxic
0	Normal	269,422	21,297	248,125
1	Race	37,459	10,820	26,639
2	Religion	65,816	8,106	57,710
3	Gender	75,303	10,571	64,732

We can observe that: (i) There are less toxicity in normal comments than comments about a specific topic; (ii) The portion of toxic comments about race is much higher than that of other topics.

Then, we do the **OOD check**, where we verify that there is a distribution shift across the groups. We perform this check in the following way: For each Group k , we train a model on a training set sampled from all groups except Group k , and then test this model on a validation set sampled from all groups except Group k , and a test sampled from Group k . The results are the following:

Table 4: OOD check results of CivilComments-WPDS (%).

Group k	Topic	Validation Accuracy	Test Accuracy	OOD Gap: Val - Test
0	Normal	87.14	94.52	-7.38
1	Race	92.90	78.86	14.04
2	Religion	92.11	89.88	2.23
3	Gender	92.20	89.80	2.40

From this table, we can see that Group 1 (race) has the largest OOD performance gap, much larger than other groups. Thus, when allocating the groups in Step 2, we will make sure that the shift to Group 1 is slower. Moreover, we observe that on Group 0, the gap is negative, which means that the OOD performance is better than the ID performance (*i.e.* A model trained on Groups 1-3 has a higher accuracy on Group 0 than Groups 1-3). This is a counter-intuitive phenomenon as it is usually taken for granted that OOD performance should be lower than ID performance. The cause of this phenomenon might be that Group 0 is much easier to learn than the other groups (for example, the data is more concentrated and depends on fewer features).

Step 2: Assign shifting group weights to the batches. We want to model the distribution shift with the shift in hot topics on social media. At each time t , D_t contains normal comments as well as comments about the current hot topic, *i.e.* samples from Group 0 exists in every batch. We design the schedule listed in the following table:

Table 5: Group weight schedule for CivilComments-WPDS. For each t , the weights add up to 1.

t	Group 0	Group 1	Group 2	Group 3
0	1.00	0.00	0.00	0.00
1	0.90	0.10	0.00	0.00
2	0.75	0.25	0.00	0.00
3	0.60	0.40	0.00	0.00
4	0.40	0.60	0.00	0.00
5	0.40	0.30	0.30	0.00
6	0.40	0.00	0.60	0.00
7	0.40	0.00	0.30	0.30
8	0.40	0.00	0.00	0.60

Then, we do the **shift continuity check**, whose point is to make sure that the distribution shift in this schedule is continuous. This check goes as follows: For each t , we sample a set from D_t and split it into a training set and a validation set, and then sample a test set from D_{t+1} . We want to make sure that the gap between the validation and the test performances is not too large for each t . The results are the following:

Table 6: Shift continuity check results of CivilComments-WPDS (%).

t	Validation Accuracy	Test Accuracy	OOD Gap: Val - Test
0	94.87	92.99	1.88
1	93.49	91.31	2.18
2	90.67	88.10	2.57
3	87.56	83.59	3.97
4	85.60	89.18	-3.58
5	89.08	91.59	-2.51
6	91.63	91.69	-0.06
7	92.05	91.47	0.58

We can see that the OOD gaps are kept under 4%, as opposed to the 14.04% gap we got in the OOD check. And we can observe the same phenomenon again: For some t , the OOD accuracy is higher than the ID accuracy.

Then, based on these results, we design the following sample allocation schedule listed in Table 8. The first batch contains 50000 samples, while all the other batches contain 10000 samples each.

Step 3: Design a separate regression set. We notice that each toxic comment is annotate which types of toxicity the comment contains in the CivilComments-Wilds dataset. Thus, we design the regression set as the set of comments with two types of severe toxicity: identity attack and explicit sexual. Such comments are critical toxic comments that a good detector should be able to detect with high success rate.

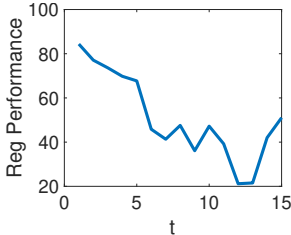


Figure 6: Regression check.

Then, we do the **regression check**, where we verify that naïve methods have regression on the regression set we constructed. Here we use the NBO baseline. As shown in Figure 6, the regression set performance of NBO quickly declines to under 50% - The performance of random guessing. Thus, the benchmarks passes this check.

Train/test split. For each t , we split S_t into a training set and a test set, and the regression set is also split into a training set and a test set. These test sets are used to evaluate the recent and regression set performances. We never evaluate the learner on data it has seen, because the learner has an infinitely large buffer where it can store the data. Instead, we evaluate the learner on separate *i.i.d.* test sets. Note that the numbers listed in Table 8 are all sizes of the training sets.

C.3 FMoW-WPDS

This benchmark is built from FMoW-Wilds. First, we separate the data into 5 groups by the year:

Table 7: Samples in FMoW-WPDS are clustered into 5 groups by their year.

Group	Year	# Samples
0	2002-2013	132,948
1	2014	54,575
2	2015	87,358
3	2016	140,459
4	2017	54,746

Table 8: Sample allocation schedule for CivilComments-WPDS.

t	Group 0	Group 1	Group 2	Group 3
0	50000	0	0	0
1	9000	1000	0	0
2	9000	1000	0	0
3	7500	2500	0	0
4	7500	2500	0	0
5	6000	4000	0	0
6	6000	4000	0	0
7	4000	6000	0	0
8	4000	3000	3000	0
9	4000	3000	3000	0
10	4000	0	6000	0
11	4000	0	6000	0
12	4000	0	3000	3000
13	4000	0	3000	3000
14	4000	0	0	6000
15	4000	0	0	6000
Total	131000	27000	24000	18000

Table 9: Sample allocation schedule for FMoW-WPDS.

t	Group 0	Group 1	Group 2	Group 3	Group 4
0	120000	0	0	0	0
1	0	10000	0	0	0
2	0	9000	1000	0	0
3	0	6900	3100	0	0
4	0	6900	3100	0	0
5	0	4100	5900	0	0
6	0	4100	5900	0	0
7	0	1500	8500	0	0
8	0	0	10000	0	0
9	0	0	9000	1000	0
10	0	0	6900	3100	0
11	0	0	6900	3100	0
12	0	0	4100	5900	0
13	0	0	4100	5900	0
14	0	0	1500	8500	0
15	0	0	1500	8500	0
16	0	0	0	10000	0
17	0	0	0	9000	1000
18	0	0	0	6900	3100
19	0	0	0	6900	3100
20	0	0	0	4100	5900
21	0	0	0	4100	5900
22	0	0	0	1500	8500
23	0	0	0	1500	8500
24	0	0	0	0	10000
Total	120000	42500	71500	80000	46000

Then, we allocate the groups with the schedule listed in Table 9. We put 120000 samples from Group 0 into batch 0 for pretraining, and all other batches contain 10000 samples each. The regression set is defined as the set of samples in two highly populated regions: Americas and Asia.

C.4 AMAZON-WPDS

This benchmark is built from the Amazon-Wilds dataset. In the original paper (Koh et al., 2021), the ID/OOD sets are divided by the reviewers, and the dataset also contains some other metadata such as year and product categories. However, we find in our experiments that these groups cannot create a sufficiently large distribution shift. Thus, we use the following class split method, which has been widely used in the continual learning literature: We divide the 5 classes of this datasets (corresponding to the 5 stars rating) into 2 groups and 2 classes - positive and negative reviews, as shown in the following table:

Table 10: In Amazon-WPDS, the 5 stars rating are divided into 2 groups and 2 classes.

	Group 0	Group 1	# Samples	Group 0	Group 1
$y = 0$	1, 2 stars	3 stars	$y = 0$	193,900	377,039
$y = 1$	4 stars	5 stars	$y = 1$	1,087,385	2,343,846

Then, we allocate the groups to the batches with the schedule listed in Table 12. This schedule is based on the weight schedule we obtained in Table 2. The first batch has 50000 samples from Group 1, and then we model a group shift from Group 1 to Group 0. Each subsequent batch has 5000 samples.

Finally, the regression set is defined as the set of reviews from 10 popular product categories, including books, fashion, etc.

C.5 POVERTY-WPDS

This benchmark is build from the PovertyMap-Wilds dataset, which is a image regression task. First, we cluster the data into 4 group by the year:

Table 11: Samples in Poverty-WPDS are clustered into 4 groups by their year.

Group	Year	# Samples
0	2009-2011	7129
1	2012-2013	5005
2	2014	3494
3	2015-2016	4041

Then we allocate the groups with the schedule listed in Table 13. We put all samples from Group 0 (except test samples) into the first batch for pretraining, and each subsequent batch contains 800 samples. Finally, the regression set is defined as the samples from urban areas, which can better reflect the overall wealth index of each country. Note that this is a regression task, and we evaluate the model performance with the Pearson correlation following Koh et al. (2021).

D ALGORITHM DETAILS

First of all, at $t = 0$, all OCL algorithms train the initial model on the first labeled batch and the training regression set with empirical risk minimization (ERM). In particular, following Koh et al. (2021), we use the cross entropy loss for classification tasks and the mean squared error for regression tasks. The differences among the methods only appear after $t > 0$.

Baselines. First, note that the upper bound baseline **i.i.d. offline** is not an OCL algorithm because it assumes access to D_t at time t . For each t , it trains a model on a set sampled from D_t with a sufficiently large size and no overlapping with S_t . The size of the training set is different for different benchmarks, but we always make sure that it is at least as large as the union of all batches before time t . Then, for **FBO**, the algorithm does not do anything after $t > 0$, and the initial model

Table 12: Sample allocation schedule for Amazon-WPDS.

t	Group 0	Group 1
0	0	50000
1	500	4500
2	500	4500
3	1550	3450
4	1550	3450
5	1550	3450
6	2950	2050
7	2950	2050
8	2950	2050
9	2950	2050
10	4250	750
11	4250	750
12	4250	750
13	4250	750
14	5000	0
15	5000	0
16	5000	0
17	5000	0
Total	54450	80550

Table 13: Sample allocation schedule for Poverty-WPDS.

t	Group 0	Group 1	Group 2	Group 3
0	6359	0	0	0
1	0	800	0	0
2	0	720	80	0
3	0	720	80	0
4	0	552	248	0
5	0	552	248	0
6	0	328	400	72
7	0	328	400	72
8	0	120	400	280
9	0	120	400	280
10	0	0	400	400
11	0	0	200	600
12	0	0	0	800
13	0	0	0	800
Total	6359	4240	2856	3304

is used till the end. For **NBO**, for each new batch S_t , the model is trained on the labeled portion of S_t only with a fixed number of epochs of ERM, and no previous sample is replayed.

ER-FIFO and ER-FIFO-RW. In ER-FIFO, for each $t > 0$, the model is fine-tuned on the union of the new labeled batch, the recent labeled batches, and the training regression set, for a fixed number of epochs (named `epochs`) of ERM. Specifically, the recent labeled batches and the training regression set are stored in the memory buffer. One issue of this approach is that it does not take into account the sizes of the batches and the regression set. For example, if the regression set is much larger than the batches, then it will be hard for the model to learn the new knowledge. Thus, ER-FIFO-RW alters the weights of the three data sets: the new data, the recent data and the regression data. Specifically, it uses uniform sampling over these three sets, so that each set has the same probability of being selected.

MIR and MaxLoss. When there are too many previous samples in the buffer, we cannot replay all of them for efficiency. ER-FIFO-RW solves this problem by randomly sampling previous samples to replay. However, this might not be the most efficient method, as some previous samples might be more useful than the others for preventing catastrophic forgetting. MIR and MaxLoss are two strategies of selecting replay samples, which operate as follows: For each iteration,

1. Sample n new samples and n_{kr} previous samples that require knowledge retention (KR).
2. Virtual update: Fine-tune $f_{t-1} \rightarrow f'_{t-1}$ with ERM on the n new samples.
3. Select n samples from the n_{kr} previous samples for replay. Specifically, MIR selects the samples whose loss increase the most before and after virtual update, while MaxLoss selects the samples with the highest loss after virtual update.
4. Recover the model to f_{t-1} , and fine-tune $f_{t-1} \rightarrow f_t$ with ERM on the n new samples and the n selected previous samples.

The ratio n_{kr}/n is named as `kr_size` in our code, which should be greater than 1. The larger n_{kr} is, the more likely we can select “useful” replay samples, but the slower the algorithm.

GEM-PDS. In this method, for each iteration, we first sample n new data, n_{kr} recent data and n_{kr} regression data, on which we estimate the three gradients of the loss function g_0, g_1 and g_2 , respectively. A larger n_{kr} allows the learner to estimate g_1 and g_2 more accurately. The ratio n_{kr}/n is still named as `kr_size`. The pseudo gradient g^* can be solved with the following procedure:

1. $a = \langle g_0, g_1 \rangle, b = \langle g_1, g_1 \rangle, c = \langle g_1, g_2 \rangle, d = \langle g_0, g_2 \rangle, e = \langle g_2, g_2 \rangle$.
2. If $a \geq 0, d \geq 0$ then return g_0 .
3. $p = cd - ae, q = ac - bd, r = be - c^2$.
4. $\hat{g}_1 = g_0 - \frac{a}{b}g_1$. If $a \leq 0$ and $q \leq 0$ then return \hat{g}_1 . (2)
5. $\hat{g}_2 = g_0 - \frac{d}{e}g_2$. If $d \leq 0$ and $p \leq 0$ then return \hat{g}_2 .
6. Return $\hat{g}_3 = g_0 + \frac{p}{r}g_1 + \frac{q}{r}g_2$.

We can verify with the KKT conditions that this procedure returns the correct solution of the optimization problem (e.g. see Section 5.5.3 of Boyd et al. (2004)). The model is then updated with gradient descent along g^* .

Online L2 Regularization and EWC. Let the loss of model f_t parameterized by θ_t (which is the vectorized model weight) on the labeled batch of S_t be $\ell_t(\theta_t)$. In online L2 regularization, we minimize the following objective function with a fixed number of epochs of ERM:

$$\min_{\theta_t} \ell_t(\theta_t) + \frac{\lambda}{2} \|\theta_t - \theta_0\|_2^2 \tag{3}$$

where we add a L_2 penalty between the new model weight θ_t and the initial model weight θ_0 . The reasons why we use $\|\theta_t - \theta_0\|_2^2$ instead of $\|\theta_t - \theta_{t-1}\|_2^2$ are:

1. θ_0 has a very good regression set performance, which is not guaranteed for θ_{t-1} . So using $\|\theta_t - \theta_0\|_2^2$ ensures a higher regression set performance.
2. If T is very large, then the model weight can still change a lot if we use $\|\theta_t - \theta_{t-1}\|_2^2$ (as the change accumulates with t), so knowledge retention cannot be guaranteed.

In EWC, the objective function is the following:

$$\min_{\theta_t} \ell_t(\theta_t) + \frac{\lambda}{2} \|\text{diag}(F_t)(\theta_t - \theta_0)\|_2^2 \tag{4}$$

where F_t is the Fisher information matrix (FIM), and $\text{diag}(F_t)$ only contains the elements on the diagonal of F_t . Following Kirkpatrick et al. (2017), we estimate $\text{diag}(F_t)$ from the first-order derivatives of the loss function on n_{kr} samples for knowledge retention. The ratio n_{kr}/n is still named as `kr_size`. With a larger n_{kr} , we can estimate F_t more accurately. λ is named as `lbd`.

Pseudo Labeling (PL) and FixMatch (FM). In PL and FM, there are two hyperparameters: the number of epochs of the virtual update step epochs_v , and the number of epochs of the real fine-tuning step epochs_r . Virtual update is done with ERM on the labeled samples only, while real fine-tuning is done with a supervised OCL algorithm on the union of labeled and pseudo-labeled samples. Thus, PL and FM can be combined with any supervised OCL algorithm, which we denote by adding the suffix “PL” or “FM” to the algorithm, such as ER-FIFO-PL and ER-FIFO-FM.

E EXPERIMENT DETAILS

E.1 SETUP

Following Koh et al. (2021), we use a DistilBert-base-uncased for CivilComments-WPDS and Amazon-WPDS, a DenseNet-121 for FMoW-WPDS, and a ResNet-18 for Poverty-WPDS. For the training hyperparameters, we generally use the same ones as in Koh et al. (2021), with one exception that we use a multi learning rate decay scheduler for the two vision benchmarks as we find that it can produce better performances than the old scheduler.

For each experiment we report the following 6 metrics:

- For online performance, we report the **average online performance (avg online)** within a finite T .
- For knowledge retention, we report the **average recent performance (avg recent)** and the **worst recent performance (worst recent)**, which is the average and the minimum of the recent performance over $t = w, \dots, T$. We also report the worst performance because knowledge retention is required for every t . Likewise, we also report the **average reg performance (avg reg)** (regression set performance) and the **worst reg performance (worst reg)**. As mentioned in Section C.1, we use separate test batches to evaluate the recent and reg performances.
- For training efficiency, we report the **average runtime (avg time)** of the method over $t = 1, \dots, T$. Note that the time used to train the initial model ($t = 0$) is not computed in the average runtime.

Each experiment is run on a single NVIDIA V100 GPU. Each experiment is run 5 times with different random seeds, and the mean and the standard deviation of the results are reported. In particular, for each benchmark we use 5 fixed initial models: We train 5 initial models on the first batch and the training regression set with ERM for a fixed number of epochs with different random seeds, and then use these 5 models as initial models for all methods. This both alleviates the effect of randomness in the initial models and saves time. Under this setting, FBO can also serve as an upper bound of the worst regression set performance, which is the regression set performance at $t = 1$ for every method.

E.2 RESULTS

In Table 14 we list the notations we use in the results. The results are reported in Tables 15-18.

Table 14: Notations of algorithms.

Algorithm	Hyperparameters	Notation	Example
NBO	epochs	NBO-epochs	NBO-5
ER-FIFO	epochs	ER-FIFO-epochs	ER-FIFO-5
ER-FIFO-RW	epochs	ER-FIFO-RW-epochs	ER-FIFO-RW-5
MIR	epochs, kr_size	MIR-epochs-kr_size	MIR-5-4
MaxLoss	epochs, kr_size	MaxLoss-epochs-kr_size	MaxLoss-5-4
GEM-PDS	epochs, kr_size	GEM-PDS-epochs-kr_size	GEM-PDS-5-4
L2Reg	epochs, lbd	L2Reg-epochs-lbd	L2Reg-5-0.1
EWC	epochs, lbd, kr_size	L2Reg-epochs-lbd-kr_size	EWC-5-0.1-4
ER-FIFO-PL	epochs_v, epochs_r	ER-FIFO-PL-epochs_v-epochs_r	ER-FIFO-PL-10-5
ER-FIFO-RW-PL	epochs_v, epochs_r	ER-FIFO-RW-PL-epochs_v-epochs_r	ER-FIFO-RW-PL-10-5
ER-FIFO-FM	epochs_v, epochs_r	ER-FIFO-FM-epochs_v-epochs_r	ER-FIFO-FM-10-5
ER-FIFO-RW-FM	epochs_v, epochs_r	ER-FIFO-RW-FM-epochs_v-epochs_r	ER-FIFO-RW-FM-10-5

Table 15: Results on CivilComments-WPDS ($\alpha = 0.5\%$). Accuracies in %.

Algorithm	Avg Online	Avg Recent	Worst Recent	Avg Reg	Worst Reg	Avg Time
FBO	81.45 (0.37)				84.79 (0.96)	
i.i.d. offline	90.03 (0.19)					
NBO-100	89.19 (0.39)	89.08 (0.23)	85.12 (1.28)	55.20 (7.54)	30.07 (11.67)	95.61 (0.85)
ER-FIFO-1	82.62 (0.34)	82.92 (0.30)	77.42 (0.97)	83.81 (0.41)	81.46 (1.00)	309.04 (1.12)
ER-FIFO-RW-3	85.27 (0.70)	85.87 (0.54)	81.42 (1.44)	80.93 (0.57)	75.90 (1.71)	7.75 (0.04)
ER-FIFO-RW-10	83.94 (0.31)	84.09 (0.47)	79.48 (0.64)	83.32 (0.43)	80.63 (1.09)	24.48 (0.04)
ER-FIFO-RW-100	81.84 (0.59)	81.95 (0.78)	76.42 (1.54)	84.48 (0.68)	82.64 (1.10)	248.83 (3.52)
MIR-10-4	87.33 (0.30)	86.70 (0.51)	80.99 (1.30)	75.94 (1.98)	57.57 (3.95)	40.99 (0.12)
MIR-100-4	84.16 (0.15)	83.36 (0.38)	77.36 (1.11)	82.29 (0.97)	74.65 (0.95)	419.84 (2.08)
MIR-10-10	86.85 (0.29)	86.06 (0.58)	79.57 (1.42)	77.71 (1.43)	60.21 (4.29)	75.31 (0.37)
MIR-100-10	83.72 (0.18)	83.09 (0.28)	77.21 (0.48)	83.00 (0.65)	78.96 (1.60)	757.66 (5.90)
MaxLoss-10-4	87.32 (0.31)	86.76 (0.51)	81.04 (0.80)	76.25 (1.90)	57.15 (2.91)	31.27 (0.09)
MaxLoss-100-4	84.18 (0.44)	83.36 (0.40)	77.22 (0.79)	82.39 (1.32)	74.31 (1.74)	317.14 (1.47)
MaxLoss-10-10	86.81 (0.34)	86.05 (0.46)	79.96 (1.11)	77.63 (1.31)	60.35 (2.31)	52.46 (0.41)
MaxLoss-100-10	83.71 (0.18)	83.12 (0.35)	77.66 (0.58)	82.73 (0.95)	77.99 (1.03)	502.09 (6.19)
GEM-PDS-10-4	87.59 (0.39)	87.64 (0.28)	82.96 (1.01)	76.13 (1.38)	66.78 (4.01)	68.15 (0.07)
GEM-PDS-30-4	87.61 (0.55)	87.58 (0.45)	82.83 (1.01)	74.92 (2.53)	61.88 (8.54)	195.42 (0.29)
GEM-PDS-10-10	86.95 (0.43)	86.86 (0.46)	82.22 (0.59)	78.33 (1.37)	71.28 (2.31)	149.77 (0.14)
GEM-PDS-30-10	86.72 (0.43)	86.60 (0.62)	80.60 (1.61)	77.52 (1.71)	64.50 (6.38)	456.54 (0.72)
L2Reg-10-1.0	88.35 (0.38)	88.51 (0.42)	84.87 (0.81)	70.51 (3.19)	59.10 (3.88)	10.33 (0.13)
L2Reg-10-10.0	87.13 (0.48)	87.20 (0.61)	82.09 (0.62)	75.63 (2.90)	67.15 (4.56)	9.82 (0.12)
L2Reg-10-100.0	86.11 (0.35)	86.03 (0.51)	80.18 (0.97)	78.07 (2.07)	69.46 (5.63)	9.76 (0.12)
L2Reg-100-1.0	87.54 (0.39)	87.35 (0.42)	82.04 (0.71)	74.56 (2.21)	65.30 (3.71)	94.03 (0.67)
L2Reg-100-10.0	86.91 (0.37)	86.65 (0.49)	80.94 (0.91)	76.30 (2.21)	68.32 (2.54)	91.92 (0.71)
L2Reg-100-100.0	86.18 (0.35)	85.93 (0.46)	79.98 (1.04)	78.05 (1.87)	69.80 (3.40)	93.58 (0.39)
EWC-10-1.0-4	88.50 (0.45)	88.54 (0.55)	84.49 (1.28)	68.74 (3.76)	54.83 (5.17)	38.86 (0.37)
EWC-10-10.0-4	87.51 (0.25)	87.39 (0.45)	82.06 (1.16)	74.67 (2.09)	65.57 (2.81)	39.00 (0.44)
EWC-10-100.0-4	85.62 (0.18)	85.38 (0.38)	79.34 (0.79)	79.75 (1.46)	74.30 (3.14)	38.81 (0.08)
EWC-100-1.0-4	86.56 (0.32)	86.36 (0.45)	80.70 (0.98)	77.53 (2.04)	71.48 (3.50)	371.97 (1.27)
EWC-100-10.0-4	86.24 (0.31)	86.01 (0.48)	80.24 (1.01)	78.21 (1.80)	72.01 (3.56)	371.44 (0.86)
EWC-100-100.0-4	85.20 (0.21)	84.79 (0.43)	78.73 (0.82)	80.44 (1.44)	75.44 (3.06)	368.17 (3.44)
ER-FIFO-PL-0-1	77.22 (1.83)	76.54 (2.06)	69.66 (2.17)	85.66 (1.31)	83.76 (0.87)	510.40 (8.05)
ER-FIFO-PL-1-1	85.21 (0.57)	86.46 (0.48)	82.81 (0.79)	79.54 (0.72)	73.69 (2.45)	526.34 (4.13)
ER-FIFO-PL-3-1	87.28 (0.33)	88.22 (0.38)	84.59 (1.02)	76.26 (1.49)	68.86 (2.63)	514.51 (4.14)
ER-FIFO-PL-10-1	87.94 (0.35)	88.76 (0.32)	85.72 (0.44)	73.82 (2.14)	64.97 (4.44)	501.86 (1.50)
ER-FIFO-PL-RW-0-1	76.55 (1.05)	75.92 (1.97)	69.13 (2.96)	86.39 (0.76)	84.36 (1.08)	499.08 (1.22)
ER-FIFO-PL-RW-1-1	84.94 (0.85)	85.97 (0.91)	82.32 (1.44)	80.26 (1.40)	75.84 (1.36)	531.59 (7.74)
ER-FIFO-PL-RW-3-1	87.08 (0.30)	88.29 (0.28)	84.79 (0.97)	76.60 (0.94)	68.59 (0.56)	522.92 (8.41)
ER-FIFO-PL-RW-10-1	87.65 (0.46)	88.64 (0.37)	85.57 (0.63)	75.28 (2.13)	67.58 (3.41)	512.99 (2.48)

Table 16: Results on FMoW-WPDS ($\alpha = 50\%$). Accuracies in %.

Algorithm	Avg Online	Avg Recent	Worst Recent	Avg Reg	Worst Reg	Avg Time
FBO	68.00 (0.24)				84.54 (0.21)	
i.i.d. offline	83.04 (0.25)					
NBO-5	71.78 (0.08)	73.03 (0.06)	71.27 (0.26)	76.84 (0.23)	72.71 (0.47)	161.90 (2.11)
ER-FIFO-2	74.01 (0.10)	76.04 (0.12)	74.38 (0.34)	83.91 (0.09)	80.82 (0.49)	1458.19 (239.67)
ER-FIFO-RW-2	72.77 (0.04)	74.56 (0.16)	73.07 (0.15)	81.84 (0.17)	80.34 (0.30)	226.31 (10.83)
ER-FIFO-RW-5	73.33 (0.11)	75.21 (0.06)	73.72 (0.28)	82.33 (0.12)	80.27 (0.34)	480.61 (20.08)
ER-FIFO-RW-10	73.56 (0.09)	75.80 (0.08)	74.31 (0.29)	82.63 (0.08)	80.21 (0.19)	953.56 (96.59)
MIR-2-2	69.75 (0.09)	70.74 (0.25)	68.68 (0.57)	79.25 (0.25)	76.48 (0.66)	357.74 (3.26)
MIR-2-4	71.29 (0.06)	72.36 (0.10)	70.44 (0.20)	80.81 (0.16)	79.19 (0.52)	460.35 (9.11)
MIR-2-10	72.59 (0.08)	73.95 (0.08)	72.27 (0.15)	81.90 (0.25)	80.92 (0.20)	710.30 (54.07)
MaxLoss-2-2	69.66 (0.21)	70.53 (0.30)	68.15 (0.81)	79.23 (0.13)	76.40 (0.56)	318.70 (3.33)
MaxLoss-2-4	71.34 (0.07)	72.46 (0.05)	70.52 (0.32)	80.86 (0.12)	79.40 (0.35)	361.38 (25.58)
MaxLoss-2-10	72.64 (0.08)	74.00 (0.10)	72.37 (0.21)	81.90 (0.30)	80.90 (0.32)	553.68 (18.74)
GEM-PDS-2-2	72.07 (0.08)	73.21 (0.19)	71.49 (0.33)	79.10 (0.15)	75.19 (0.45)	240.80 (3.06)
GEM-PDS-2-4	72.04 (0.11)	73.14 (0.09)	71.54 (0.34)	79.16 (0.23)	75.54 (0.75)	502.77 (41.03)
GEM-PDS-2-10	72.05 (0.07)	73.21 (0.13)	71.45 (0.37)	79.17 (0.21)	75.86 (0.38)	969.29 (5.54)
L2Reg-2-0.1	69.61 (0.11)	70.14 (0.19)	66.43 (0.28)	81.59 (0.17)	78.84 (0.95)	76.42 (1.15)
L2Reg-2-1.0	67.90 (0.14)	68.32 (0.20)	63.78 (0.61)	82.30 (0.21)	80.30 (1.00)	79.84 (1.27)
L2Reg-2-10.0	68.02 (0.12)	68.74 (0.26)	63.34 (0.43)	83.74 (0.19)	82.92 (0.30)	79.94 (0.99)
EWC-2-0.1-4	70.16 (0.16)	70.76 (0.24)	67.72 (0.43)	81.94 (0.10)	80.20 (0.60)	239.01 (1.32)
EWC-2-1.0-4	68.51 (0.16)	69.01 (0.27)	64.84 (0.49)	82.93 (0.14)	81.73 (0.42)	288.53 (26.63)
EWC-2-10.0-4	68.13 (0.12)	68.84 (0.20)	63.96 (0.35)	83.69 (0.11)	83.21 (0.14)	287.97 (26.06)
ER-FIFO-PL-3-3	74.25 (0.15)	76.34 (0.22)	74.49 (0.48)	84.00 (0.18)	80.34 (0.43)	1881.01 (6.93)
ER-FIFO-PL-5-3	74.36 (0.08)	76.47 (0.23)	75.00 (0.58)	83.95 (0.13)	80.20 (0.50)	1924.03 (15.96)
ER-FIFO-PL-3-5	74.55 (0.06)	76.54 (0.24)	74.96 (0.42)	84.40 (0.10)	80.90 (0.60)	3071.01 (28.59)
ER-FIFO-PL-5-5	74.62 (0.05)	76.67 (0.13)	74.91 (0.21)	84.29 (0.11)	80.65 (0.23)	3128.51 (54.12)
ER-FIFO-PL-RW-3-3	73.40 (0.04)	75.28 (0.25)	73.80 (0.40)	82.12 (0.16)	79.80 (0.37)	573.71 (9.83)
ER-FIFO-PL-RW-5-3	73.49 (0.09)	75.43 (0.18)	73.90 (0.34)	82.10 (0.19)	80.07 (0.24)	622.28 (6.41)
ER-FIFO-PL-RW-3-5	73.50 (0.15)	75.41 (0.26)	73.70 (0.46)	82.27 (0.08)	79.52 (0.14)	891.74 (9.63)
ER-FIFO-PL-RW-5-5	73.46 (0.04)	75.42 (0.14)	73.89 (0.21)	82.26 (0.06)	79.40 (0.31)	944.21 (6.73)
ER-FIFO-FM-3-3	74.81 (0.09)	76.91 (0.15)	75.36 (0.62)	84.37 (0.11)	80.80 (0.18)	2022.45 (179.49)
ER-FIFO-FM-5-3	74.80 (0.06)	76.86 (0.13)	75.27 (0.17)	84.32 (0.16)	80.36 (0.42)	2084.54 (183.02)
ER-FIFO-FM-3-5	75.10 (0.07)	77.19 (0.13)	75.46 (0.15)	84.70 (0.16)	80.96 (0.27)	3056.44 (52.54)
ER-FIFO-FM-5-5	75.16 (0.05)	77.33 (0.19)	75.75 (0.60)	84.71 (0.10)	80.88 (0.39)	3268.89 (307.79)
ER-FIFO-RW-FM-3-3	73.44 (0.05)	75.37 (0.30)	73.80 (0.37)	81.87 (0.19)	79.62 (0.35)	572.95 (2.68)
ER-FIFO-RW-FM-5-3	73.40 (0.08)	75.31 (0.12)	73.83 (0.30)	81.80 (0.05)	79.52 (0.41)	642.91 (37.83)
ER-FIFO-RW-FM-3-5	73.71 (0.05)	75.72 (0.15)	74.04 (0.41)	82.27 (0.08)	79.38 (0.44)	896.77 (4.61)
ER-FIFO-RW-FM-5-5	73.75 (0.15)	75.68 (0.13)	74.32 (0.25)	82.31 (0.05)	79.52 (0.33)	971.52 (39.10)

Table 17: Results on Amazon-WPDS ($\alpha = 0.5\%$). Accuracies in %.

Algorithm	Avg Online	Avg Recent	Worst Recent	Avg Reg	Worst Reg	Avg Time
FBO	84.85 (0.20)				93.78 (0.26)	
i.i.d. offline	94.15 (0.19)					
NBO-100	90.49 (0.41)	90.68 (0.34)	88.58 (0.95)	92.22 (0.43)	88.63 (0.76)	105.68 (1.74)
ER-FIFO-1	87.12 (0.34)	88.06 (0.28)	84.70 (0.40)	93.58 (0.16)	93.02 (0.28)	314.64 (1.60)
ER-FIFO-RW-10	88.47 (0.67)	89.32 (0.73)	86.85 (1.62)	93.63 (0.30)	93.00 (0.37)	17.09 (0.06)
ER-FIFO-RW-100	86.65 (0.21)	87.39 (0.31)	83.22 (1.07)	93.68 (0.20)	93.11 (0.37)	181.74 (1.46)
MIR-10-4	89.46 (0.46)	90.19 (0.51)	88.00 (1.55)	93.31 (0.34)	91.82 (0.94)	28.88 (0.23)
MIR-100-4	86.99 (0.48)	87.87 (0.59)	84.28 (0.87)	93.62 (0.38)	92.86 (0.67)	286.59 (2.91)
MIR-10-10	89.15 (0.61)	89.95 (0.66)	87.28 (2.16)	93.45 (0.36)	92.21 (0.82)	47.99 (0.24)
MIR-100-10	87.16 (0.36)	88.07 (0.42)	84.68 (0.38)	93.78 (0.26)	93.24 (0.29)	479.84 (11.69)
MaxLoss-10-4	89.42 (0.43)	90.14 (0.54)	87.52 (2.01)	93.33 (0.28)	91.82 (0.84)	24.37 (0.17)
MaxLoss-100-4	87.06 (0.69)	87.88 (0.75)	84.42 (1.17)	93.72 (0.33)	93.13 (0.41)	247.32 (6.66)
MaxLoss-10-10	89.32 (0.57)	90.06 (0.61)	87.78 (1.78)	93.49 (0.27)	92.41 (0.57)	34.72 (0.24)
MaxLoss-100-10	87.11 (0.45)	88.06 (0.66)	84.73 (1.18)	93.73 (0.30)	93.18 (0.30)	358.98 (3.47)
GEM-PDS-10-4	89.94 (0.46)	90.50 (0.41)	88.74 (1.11)	92.94 (0.46)	90.65 (0.47)	37.30 (0.18)
GEM-PDS-30-4	90.32 (0.47)	90.84 (0.35)	89.22 (1.08)	92.55 (0.43)	89.64 (0.66)	111.27 (0.22)
GEM-PDS-10-10	89.77 (0.61)	90.42 (0.51)	88.20 (1.79)	93.10 (0.46)	91.30 (0.45)	82.24 (0.20)
GEM-PDS-30-10	90.26 (0.58)	90.81 (0.55)	89.32 (1.23)	92.80 (0.26)	89.93 (1.16)	239.08 (0.97)
L2Reg-10-0.1	89.01 (0.43)	89.79 (0.45)	86.72 (2.43)	93.23 (0.47)	91.46 (1.00)	11.06 (0.16)
L2Reg-10-1.0	88.00 (0.51)	88.83 (0.57)	85.14 (1.48)	93.62 (0.20)	92.94 (0.35)	8.52 (0.05)
L2Reg-10-10.0	86.67 (0.30)	87.46 (0.35)	82.21 (1.26)	93.75 (0.18)	93.26 (0.18)	8.53 (0.07)
EWC-10-0.1-4	89.32 (0.43)	90.05 (0.46)	87.06 (2.60)	93.20 (0.35)	91.21 (1.21)	26.12 (0.41)
EWC-10-1.0-4	88.94 (0.45)	89.77 (0.49)	86.48 (2.77)	93.34 (0.27)	91.60 (1.27)	23.02 (0.21)
EWC-10-10.0-4	88.52 (0.48)	89.32 (0.57)	85.75 (2.05)	93.58 (0.24)	92.72 (0.34)	23.34 (0.24)
ER-FIFO-PL-0-1	85.75 (1.09)	86.39 (1.27)	80.91 (2.85)	93.94 (0.10)	93.39 (0.17)	428.25 (11.42)
ER-FIFO-PL-1-1	87.84 (0.57)	88.94 (0.69)	86.21 (1.57)	93.77 (0.22)	93.17 (0.27)	427.75 (7.14)
ER-FIFO-PL-3-1	88.97 (0.36)	89.98 (0.26)	87.72 (0.48)	93.66 (0.28)	92.92 (0.42)	422.17 (2.50)
ER-FIFO-PL-10-1	89.47 (0.40)	90.39 (0.38)	88.42 (1.43)	93.20 (0.13)	92.07 (0.36)	419.94 (1.45)
ER-FIFO-RW-PL-0-1	85.28 (1.37)	85.96 (1.41)	80.30 (2.62)	93.66 (0.44)	92.97 (0.58)	277.10 (0.58)
ER-FIFO-RW-PL-1-1	88.21 (0.95)	89.03 (1.09)	85.95 (2.30)	93.79 (0.25)	93.15 (0.33)	278.52 (1.28)
ER-FIFO-RW-PL-3-1	89.19 (0.43)	90.03 (0.40)	87.56 (1.09)	93.68 (0.15)	92.88 (0.38)	274.58 (0.62)
ER-FIFO-RW-PL-10-1	89.84 (0.54)	90.56 (0.49)	88.95 (1.30)	93.39 (0.31)	91.80 (0.59)	280.12 (1.85)

Table 18: Results on Poverty-WPDS ($\alpha = 50\%$). Results are Pearson correlations.

Algorithm	Avg Online	Avg Recent	Worst Recent	Avg Reg	Worst Reg	Avg Time
FBO	0.781 (0.024)				0.638 (0.017)	
i.i.d. offline	0.832 (0.010)					
NBO-100	0.813 (0.003)	0.831 (0.004)	0.780 (0.010)	0.583 (0.012)	0.520 (0.035)	204.69 (2.12)
ER-FIFO-50	0.791 (0.007)	0.806 (0.008)	0.748 (0.050)	0.633 (0.018)	0.549 (0.109)	881.86 (57.91)
ER-FIFO-RW-50	0.793 (0.006)	0.807 (0.009)	0.753 (0.028)	0.641 (0.016)	0.612 (0.024)	244.83 (3.85)
ER-FIFO-RW-100	0.798 (0.007)	0.812 (0.009)	0.765 (0.045)	0.641 (0.018)	0.611 (0.032)	426.77 (2.04)
ER-FIFO-RW-150	0.799 (0.004)	0.813 (0.007)	0.765 (0.044)	0.643 (0.015)	0.608 (0.021)	629.51 (8.50)
MIR-30-4	0.737 (0.021)	0.759 (0.016)	0.691 (0.050)	0.579 (0.015)	0.502 (0.036)	256.05 (31.52)
MIR-100-4	0.750 (0.007)	0.773 (0.015)	0.702 (0.023)	0.585 (0.007)	0.524 (0.043)	847.82 (27.40)
MIR-30-10	0.759 (0.010)	0.779 (0.016)	0.694 (0.060)	0.602 (0.008)	0.561 (0.019)	719.60 (42.89)
MIR-100-10	0.774 (0.007)	0.793 (0.011)	0.747 (0.029)	0.611 (0.014)	0.568 (0.031)	2148.85 (137.06)
MaxLoss-30-4	0.727 (0.023)	0.752 (0.020)	0.688 (0.038)	0.575 (0.014)	0.509 (0.024)	274.64 (25.15)
MaxLoss-100-4	0.740 (0.019)	0.760 (0.023)	0.677 (0.039)	0.584 (0.017)	0.471 (0.182)	818.20 (19.62)
MaxLoss-30-10	0.754 (0.012)	0.776 (0.016)	0.695 (0.053)	0.601 (0.008)	0.561 (0.015)	557.77 (23.40)
MaxLoss-100-10	0.770 (0.010)	0.790 (0.015)	0.734 (0.054)	0.610 (0.017)	0.569 (0.029)	1643.23 (116.68)
GEM-PDS-30-4	0.771 (0.005)	0.800 (0.009)	0.783 (0.009)	0.634 (0.014)	0.622 (0.015)	338.23 (7.42)
GEM-PDS-100-4	0.777 (0.006)	0.809 (0.005)	0.793 (0.013)	0.640 (0.010)	0.627 (0.012)	1125.91 (36.97)
GEM-PDS-30-10	0.761 (0.004)	0.786 (0.009)	0.773 (0.013)	0.634 (0.014)	0.622 (0.019)	750.12 (4.47)
GEM-PDS-100-10	0.767 (0.005)	0.798 (0.006)	0.781 (0.012)	0.640 (0.009)	0.629 (0.011)	3247.20 (472.93)
L2Reg-100-0.1	0.797 (0.007)	0.804 (0.004)	0.743 (0.027)	0.614 (0.012)	0.559 (0.032)	249.46 (19.51)
L2Reg-100-1.0	0.792 (0.006)	0.807 (0.004)	0.783 (0.008)	0.642 (0.005)	0.619 (0.010)	247.66 (6.89)
L2Reg-100-10.0	0.780 (0.010)	0.799 (0.006)	0.778 (0.013)	0.641 (0.004)	0.616 (0.008)	247.39 (7.83)
EWC-100-0.1	0.726 (0.009)	0.744 (0.012)	0.719 (0.018)	0.625 (0.010)	0.601 (0.013)	884.09 (12.90)
EWC-100-1.0	0.735 (0.004)	0.753 (0.007)	0.734 (0.007)	0.648 (0.003)	0.628 (0.007)	714.14 (61.72)
EWC-100-10.0	0.716 (0.004)	0.731 (0.007)	0.718 (0.006)	0.652 (0.006)	0.636 (0.015)	719.71 (66.79)